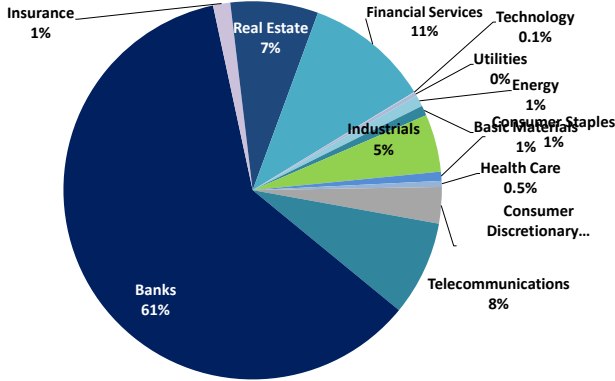


Boursa Kuwait Daily Report

May 13, 2026

Sector Weight by Market Cap



Top 10 Companies by Market Capitalization

Company Name	Market Cap. (Mn KWD)	P/E (X)	ROE* (%)
1- Kuwait Finance House	15,381.5	24.3	11.0%
2- National Bank of Kuwait	7,784.6	13.5	12.6%
3- Boubyan Bank	3,133.8	31.2	10.4%
4- Zain	2,531.3	10.6	19.6%
5- Mabaneer Co.	1,540.9	18.2	11.5%
6- Gulf Bank	1,417.0	27.1	6.1%
7- Warba Bank	1,331.9	26.8	6.0%
8- Commercial Bank of Kuwait	1,071.5	8.8	15.4%
9- National Mobile Telecom Co.	903.1	11.7	12.4%
10- Ahli Bank of Kuwait	744.9	11.9	9.2%
Total	35,841	17.97	11.7%

*: ROE is calculated based on FY 2025 net profit & shareholders' equity as of 31-December-25

Top Movers and Most Active Stocks

Today's Top % Gainers	Close (KWD)	Change (KWD)	Percent Change
National Real Estate Co.	0.110	0.014	14.1%
Kuwait Resorts Co.	0.144	0.013	9.9%
National Cleaning Co.	0.257	0.017	7.1%
Palms Agro Production Co.	0.258	0.014	5.7%
The Energy House Co.	0.284	0.013	4.8%

Today's Top % Losers	Close (KWD)	Change (KWD)	Percent Change
Tamdeen Investment Co.	0.988	(0.232)	(19.0%)
Al Kout for Industrial Projects Co.	0.856	(0.067)	(7.3%)
Gulf Insurance Group	0.742	(0.058)	(7.3%)
Ekttitab Holding Co.	0.034	(0.003)	(6.9%)
National International Holding Co.	0.160	(0.009)	(5.3%)

Today's Most Active by Volume	Close (KWD)	Percent Change	Volume (Shares)
National Real Estate Co.	0.110	14.1%	62,967,598
National Cleaning Co.	0.257	7.1%	38,110,186
GFH Financial Group	0.192	1.1%	35,802,917
Kuwait Projects Co.(Holding)	0.085	1.7%	23,407,461
Kuwait International Bank	0.268	2.3%	22,889,099

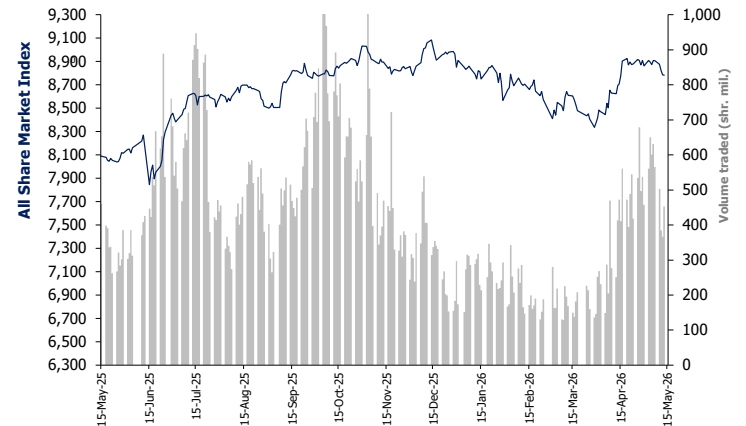
Source: Boursa Kuwait, Kamco Invest Research

Sector Returns

	Index Close	DTD	DTD % Chg	MTD % Chg	YTD % Chg
All Share Market Index	8,782.1	▼	(0.0%)	(0.9%)	(1.4%)
Energy	1,886.7	▲	0.5%	4.4%	8.8%
Basic Materials	800.3	▼	(1.9%)	(1.1%)	(4.0%)
Industrials	757.8	▲	0.0%	1.0%	0.0%
Consumer Staples	1,345.3	▼	(0.3%)	(2.4%)	(1.1%)
Health Care	585.3	▲	0.2%	5.1%	(1.0%)
Consumer Discretionary	2,296.5	▼	(0.4%)	(2.3%)	(3.6%)
Telecommunications	1,403.6	▲	0.3%	1.6%	14.5%
Banks	2,113.4	▲	0.2%	(1.6%)	(2.6%)
Insurance	1,906.0	▼	(2.5%)	(1.1%)	(2.2%)
Real Estate	2,034.4	▲	0.1%	0.2%	0.3%
Financial Services	1,788.4	▼	(0.9%)	(0.6%)	(6.9%)
Technology	2,473.5	▼	(2.6%)	23.2%	159.5%
Utilities	389.5	▼	(0.7%)	0.0%	(0.7%)

Market Breadth	▲ 48	▼ 66	▬ 25		
Benchmark Return	Closing Value	DTD Chg	DTD % Chg	MTD % Chg	YTD % Chg
Premier Market Index	9,283.46	10.9	0.1%	(1.0%)	(2.3%)
Main 50 Index	9,672.03	66.8	0.7%	3.3%	11.3%
Main Market Index	8,567.50	(64.5)	(0.7%)	(0.0%)	3.2%
All Share Market Index	8,782.08	(2.2)	(0.0%)	(0.9%)	(1.4%)
Market Cap (KWD Mn)	52,888.29	(10.67)	(0.0%)	(0.9%)	(1.2%)

Index Performance relative to Volume



Market Trading Data and Volatility

Trading Indicators	Today's Value	DTD Chg	DTD % Chg	Average Daily YTD 2026	YTD 2025
Volume (Shrs Mn)	452.9	86.7	23.7%	297.2	419.1
Value Traded (KWD Mn)	101.5	4.45	4.6%	78.6	110.5
No. of Trades	23,145	(2,173.0)	(8.6%)	20,136	20,196

Today's Most Active by Value	Close (KWD)	Percent Change	Value (KWD)
National Cleaning Co.	0.257	7.1%	9,420,168
GFH Financial Group	0.192	1.1%	6,863,028
National Real Estate Co.	0.110	14.1%	6,556,916
Kuwait Finance House	0.778	0.4%	6,481,416
Kuwait International Bank	0.268	2.3%	6,079,079

Boursa Kuwait - Premier Market

Wednesday, May 13, 2026

	Premier Market Stocks	Closing Price			Market Capitalization			Valuation Multiples				YTD-26		YTD-26 Trading Indicators	
		KWD	DTD Chg. (KWD)	D-T-D Return	KWD Mn	Weight in Premier Index	Weight in Boursa Kuwait	P/E (X)	P/BV (X)	Yield	Beta	ROE	YTD-26 Price Return	Volume (Mn Shrs)	Value (KWD Mn)
▲	National Bank of Kuwait	0.848	0.001	0.1%	7,785	17.7%	14.7%	13.5	1.70	4.1%	1.22	12.6%	(12.3%)	612.12	569.37
▼	Gulf Bank	0.338	(0.002)	(0.6%)	1,417	3.2%	2.7%	27.1	1.66	2.7%	1.05	6.1%	(0.6%)	597.42	203.45
▼	Ahli Bank	0.271	(0.001)	(0.4%)	745	1.7%	1.4%	11.9	1.09	3.7%	0.66	9.2%	(3.2%)	238.38	70.24
▲	Kuwait International Bank	0.268	0.006	2.3%	503	1.1%	1.0%	16.7	1.31	2.8%	1.00	7.9%	2.7%	720.38	199.52
=	Burgan Bank	0.193	0.000	0.0%	735	1.7%	1.4%	15.8	0.84	3.1%	1.09	5.3%	(7.5%)	322.90	66.50
▲	Kuwait Finance House	0.778	0.003	0.4%	15,381	34.9%	29.1%	24.3	2.68	3.1%	1.33	11.0%	2.6%	1,044.31	843.49
▼	Boubyan Bank	0.664	(0.001)	(0.2%)	3,134	7.1%	5.9%	31.2	3.25	1.1%	1.03	10.4%	(0.6%)	154.49	105.75
▼	Kuwait Investment Co.	0.192	(0.004)	(2.0%)	106	0.2%	0.2%	5.4	0.75	9.3%	0.98	14.0%	(17.6%)	160.94	33.17
=	Int'l Financial Advisors Co.	0.425	0.000	0.0%	231	0.5%	0.4%	20.0	1.80	0.0%	1.24	9.0%	(8.8%)	292.38	120.83
▼	National Investments Co	0.251	(0.001)	(0.4%)	200	0.5%	0.4%	8.3	0.83	9.9%	1.32	10.0%	(16.9%)	99.60	26.95
▲	Kuwait Projects Co. (Holding)	0.085	0.001	1.7%	423	1.0%	0.8%	25.9	0.66	0.0%	0.82	2.5%	6.3%	762.37	64.36
▼	Arzan Financial Group for Financing & In	0.384	(0.004)	(1.0%)	348	0.8%	0.7%	15.0	1.56	0.5%	1.04	10.4%	3.2%	272.93	95.96
=	Aayan Leasing and Investment	0.266	0.000	0.0%	177	0.4%	0.3%	9.1	1.49	2.8%	1.28	16.4%	15.7%	630.37	145.17
▲	Kuwait Real Estate Co.	0.371	0.001	0.3%	39	0.1%	0.1%	2.6	0.21	0.0%	0.96	7.8%	(3.4%)	351.73	124.54
▼	United Real Estate Co.	0.262	(0.003)	(1.1%)	375	0.9%	0.7%	61.3	1.85	0.0%	0.59	3.0%	(1.1%)	178.86	49.62
▼	Salhia Real Estate Co.	0.394	(0.003)	(0.8%)	246	0.6%	0.5%	40.2	1.35	3.7%	0.37	3.4%	0.8%	138.40	54.99
▼	Mabane Co.	0.983	(0.009)	(0.9%)	1,541	3.5%	2.9%	18.2	2.10	2.0%	1.01	11.5%	(4.4%)	130.53	130.00
▼	The Commercial Real Estate Co.	0.187	(0.001)	(0.5%)	355	0.8%	0.7%	21.7	1.18	1.5%	0.67	5.4%	(7.9%)	524.97	110.20
=	National Industries Group (Holding)	0.257	0.000	0.0%	650	1.5%	1.2%	8.9	1.09	1.9%	1.42	12.2%	(14.0%)	499.64	129.93
▼	Gulf Cable and Electrical Industries	1.955	(0.044)	(2.2%)	407	0.9%	0.8%	18.3	1.18	3.5%	0.98	6.4%	(6.9%)	24.60	48.74
▼	Heavy Engineering Industries and Shipbu	0.755	(0.002)	(0.3%)	150	0.3%	0.3%	15.2	1.84	3.3%	0.66	12.1%	(3.3%)	51.95	42.45
▼	Boubyan Petrochemical Co.	0.624	(0.003)	(0.5%)	334	0.8%	0.6%	18.3	1.32	6.4%	0.73	7.2%	6.3%	83.27	48.81
▲	Agility Public Warehousing Co.	0.142	0.002	1.4%	362	0.8%	0.7%	NM	0.64	1.3%	1.55	NM	0.7%	494.54	68.57
=	Mobile Telecommunications Co.	0.585	0.000	0.0%	2,531	5.7%	4.8%	10.6	2.08	6.0%	1.19	19.6%	12.7%	345.36	189.93
▲	Human Soft Holding Co.	2.404	0.007	0.3%	324	0.7%	0.6%	9.1	2.93	11.4%	0.50	32.1%	(8.5%)	15.53	40.31
▼	IFA Hotels & Resorts Co.	0.859	(0.001)	(0.1%)	250	0.6%	0.5%	13.4	4.88	0.0%	0.79	36.3%	(18.0%)	97.90	86.94
▲	Combined Group Contracting Co.	1.004	0.011	1.1%	172	0.4%	0.3%	10.9	2.40	3.0%	0.70	22.1%	(12.5%)	39.85	38.14
=	Oula Fuel Marketing Co.	0.265	0.000	0.0%	118	0.3%	0.2%	16.9	1.37	3.0%	0.63	8.1%	(7.0%)	139.27	37.11
▼	Jazeera Airways Co.	1.596	(0.007)	(0.4%)	351	0.8%	0.7%	16.1	7.40	5.3%	0.77	45.8%	(1.8%)	29.86	49.20
▲	GFH Financial Group BSC	0.192	0.002	1.1%	736	1.7%	1.4%	17.1	2.35	3.9%	0.96	13.7%	1.6%	1,760.06	322.64
▲	Warba Bank	0.282	0.001	0.4%	1,332	3.0%	2.5%	26.8	1.61	1.8%	1.00	6.0%	(3.8%)	720.52	212.95
▲	Kuwait Telecommunication Co.	0.670	0.010	1.5%	669	1.5%	1.3%	19.6	2.79	5.7%	0.64	14.2%	(2.9%)	74.60	49.53
▼	Mezzan Holding Co.	1.245	(0.003)	(0.2%)	387	0.9%	0.7%	22.3	3.01	3.6%	0.50	13.5%	(0.4%)	33.82	40.38
▲	Integrated holding Co.	0.418	0.004	1.0%	106	0.2%	0.2%	19.1	1.65	3.6%	0.55	8.6%	(7.1%)	144.00	59.57
▼	Boursa Kuwait Securities Co.	2.803	(0.024)	(0.8%)	563	1.3%	1.1%	20.0	7.10	4.5%	0.95	35.6%	(24.2%)	31.07	92.90
▼	Ali Alghanim Sons Automotive Co.	1.002	(0.005)	(0.5%)	361	0.8%	0.7%	11.6	3.43	5.3%	0.48	29.5%	(2.5%)	71.17	77.83
▼	Beout Investment Group Holding Co.	0.368	(0.001)	(0.3%)	110	0.3%	0.2%	13.4	2.16	2.7%	0.48	16.1%	(6.8%)	133.37	49.52
▲	Action Energy Company K.S.C.C	0.294	0.005	1.7%	167	0.4%	0.3%	29.2	1.99	1.0%	1.99	6.8%	23.0%	484.74	136.07
▼	Trolley General Trading Company Co.	0.940	(0.007)	(0.7%)	259	0.6%	0.5%	32.1	7.92	0.0%	NA	24.6%	NA	57.17	48.16
Subtotal- Premier Market Stocks		9,283.46	10.93	0.1%	44,078	100%	83%	17.0	1.68	3.25%		9.5%	(2.3%)	12,565.37	4,883.76
Rest of the Market					8,810		17%	10.9	1.15	1.76%		6.1%		13,287.44	1,956.00

Source: Kamco Invest Research

Boursa Kuwait Daily Bulletin

Wednesday, May 13, 2026

Company	Reuters Ticker	Valuation Multiples				Price (KWD)		MKT Cap (KWD Mn.)	52 Weeks High (KWD)	52 Weeks Low (KWD)	YTD-26 Return #	Daily Trading Data		YTD-26 Capital Turnover	ROE
		Trailing P/E (X)	Trailing P/BV (X)	Dividend Yield	Beta	Closing	DTD Change					Volume (Shrs.)	Value (KWD)		
▲ Senergy Holding Co.	SENE.KW	NM	2.88	0.00%	1.08	0.135	0.003	27.0	0.143	0.050	21.6%	2,108,051	281,440	84.4%	2.4%
= Independent Petroleum Group	IPGK.KW	11.1	0.97	6.87%	0.30	0.627	0.000	113.4	0.834	0.535	6.3%	0	0	1.3%	8.7%
▼ National Petroleum Services Co.	NAPS.KW	10.7	2.68	5.79%	0.19	1.590	(0.010)	154.2	1.885	1.142	(0.5%)	13	20	0.2%	25.1%
▲ The Energy House Co.	ENER.KW	29.4	4.44	0.00%	0.79	0.284	0.013	12.9	0.323	0.186	13.1%	5,501,775	1,538,847	99.9%	15.1%
▼ Burgan Co. for Drilling, Tdg. & Maint. *	ABAR.KW	11.6	0.56	3.80%	0.28	0.174	(0.003)	44.1	0.235	0.136	(5.4%)	1,436,567	251,554	8.3%	4.8%
▲ Action Energy Company K.S.C.C	ALFTAQA.KW	29.2	1.99	1.02%	1.99	0.294	0.005	166.6	0.313	0.231	23.0%	2,810,473	830,647	85.6%	6.8%
Energy		11.6	2.33	4.80%				518.1			8.8%	11,856,879	2,902,508		10.0%
▼ Kuwait Foundry Co.	KFDC.KW	14.0	1.74	1.03%	0.49	0.485	(0.003)	31.5	0.720	0.475	(23.9%)	19,659	9,509	2.0%	12.5%
▼ Boubyan Petrochemicals Co.*	BPCC.KW	18.3	1.32	6.38%	0.73	0.624	(0.003)	333.7	0.699	0.545	6.3%	167,145	104,723	15.6%	7.2%
▼ Al Kout for Industrial Projects Co.	ALKK.KW	12.5	2.25	4.67%	0.15	0.856	(0.067)	86.4	2.145	0.702	(24.9%)	10,263	9,600	0.2%	17.9%
Basic Materials		14.0	1.74	4.67%				451.6			(4.0%)	197,067	123,832		8.8%
▲ Specialities Group Holding Co.	SPEC.KW	18.0	1.13	1.46%	0.70	0.197	0.002	39.5	0.204	0.138	20.9%	1,597,501	313,617	24.0%	6.3%
= Kuwait Cement Co.	KCEM.KW	45.2	1.33	1.50%	0.62	0.453	0.000	323.0	0.457	0.260	6.6%	53,873	24,390	3.1%	3.0%
▼ Gulf Cable & Electrical Ind. Co.	CABL.KW	18.3	1.18	3.55%	0.98	1.955	(0.044)	407.0	2.280	1.708	(6.9%)	384,022	767,158	11.8%	6.4%
▼ Heavy Eng'g Ind. & Shipbuilding Co.	SHIP.KW	15.2	1.84	3.31%	0.66	0.755	(0.002)	149.7	0.882	0.685	(3.3%)	1,171,957	883,752	26.2%	12.1%
▼ Kuwait Portland Cement Co.	PCEM.KW	23.3	0.78	6.47%	0.43	0.618	(0.018)	61.9	0.795	0.596	(3.1%)	607,793	372,237	6.5%	3.4%
▼ Shuaiba Industrial Co.	PAPE.KW	29.4	1.15	3.27%	0.27	0.211	(0.006)	20.9	0.427	0.159	(11.3%)	16,749	3,553	4.8%	3.9%
▲ Metal & Recycling Co.	MRCK.KW	NM	1.68	0.00%	0.24	0.142	0.002	12.8	0.216	0.091	0.0%	116,452	16,539	67.0%	NM
▼ ACICO Industries Co.	ACIC.KW	51.3	6.03	0.00%	0.67	0.445	(0.002)	147.0	0.528	0.054	29.0%	513,081	229,493	61.5%	11.8%
▲ National Industries Co.	NIBM.KW	24.7	0.97	4.04%	0.23	0.247	0.001	88.7	0.294	0.190	14.9%	79,251	19,474	1.9%	3.9%
▼ Equipment Holding Co.	EQUI.KW	NM	7.41	0.00%	1.09	0.243	(0.010)	19.4	0.380	0.086	(56.0%)	2,823,148	691,375	291.8%	NM
▼ National Co. for Consumer Industries	NCCI.KW	77.1	0.99	0.00%	0.28	0.102	(0.003)	30.6	0.129	0.093	(9.7%)	2,853,435	293,575	63.8%	1.3%
▲ Agility (PWC Logistics)	AGLT.KW	NM	0.64	1.34%	1.55	0.142	0.002	362.4	0.266	0.126	0.7%	9,208,726	1,299,277	19.4%	NM
▲ National Cleaning Co.	CLEA.KW	23.8	1.74	1.08%	0.86	0.257	0.017	64.2	0.254	0.048	112.4%	38,110,186	9,420,168	483.2%	7.3%
▲ Kuwait Co. For Process Plant Const. & Cont.	KCPC.KW	10.0	1.20	4.32%	0.47	0.340	0.007	46.5	0.370	0.294	(4.2%)	20,318	6,787	2.2%	12.0%
▲ Humansoft Holding Co.	HUMN.KW	9.1	2.93	11.39%	0.50	2.404	0.007	324.0	2.760	2.302	(8.5%)	128,047	307,691	11.5%	32.1%
= Gulf Franchising Co.	GFCI.KW	5.8	4.00	0.00%	1.25	0.413	0.000	16.5	0.450	0.130	9.8%	0	0	0.7%	68.8%
▲ Combined Group Contracting Co.	CGCK.KW	10.9	2.40	2.98%	0.70	1.004	0.011	171.8	1.150	0.574	(12.5%)	476,783	474,707	23.3%	22.1%
▼ United Projects Group	UPAC.KW	NM	0.68	0.00%	0.27	0.188	(0.004)	71.0	0.345	0.132	(13.4%)	344,274	64,929	9.7%	NM
▼ Mubarrad Holding Co.	MBRD.KW	13.7	0.97	4.07%	0.92	0.123	(0.001)	20.1	0.135	0.089	6.0%	2,162,785	267,321	47.8%	7.0%
▲ Integrated holding Co.	INTEGRATED.KW	19.1	1.65	3.59%	0.55	0.418	0.004	105.8	0.625	0.377	(7.1%)	2,871,278	1,186,167	56.9%	8.6%
= Umm Al-Qaiwain General Investments Co.	QIC.KW	7.4	0.76	4.50%	0.17	0.136	0.000	49.4	0.270	0.079	0.0%	75,165	10,141	3.6%	10.2%
▲ Jassim Transport & Stevedoring Co.	JTC.KW	10.0	1.25	5.63%	0.07	0.497	0.002	74.6	0.539	0.375	11.7%	21,266	10,571	12.2%	12.5%
Industrials		18.1	1.22	3.57%				2,606.8			0.0%	63,636,090	16,662,921		NM

Boursa Kuwait Daily Bulletin

Wednesday, May 13, 2026

Company	Reuters Ticker	Valuation Multiples				Price (KWD)		MKT Cap (KWD Mn.)	52 Weeks High (KWD)	52 Weeks Low (KWD)	YTD-26 Return #	Daily Trading Data		YTD-26 Capital Turnover	ROE
		Trailing P/E (X)	Trailing P/BV (X)	Dividend Yield	Beta	Closing	DTD Change					Volume (Shrs.)	Value (KWD)		
▼ Livestock Transport & Trading Co.	CATT.KW	NM	1.22	0.00%	0.28	0.096	(0.001)	20.0	0.155	0.082	(12.2%)	172,330	16,886	12.3%	NM
▼ Mezzan Holding Co.	MEZZ.KW	22.3	3.01	3.61%	0.50	1.245	(0.003)	386.9	1.800	0.970	(0.4%)	740,203	924,667	10.9%	13.5%
Consumer Staples		22.3	2.11	3.61%				406.9			(1.1%)	912,533	941,553		5.9%
▲ Advanced Technology Co.	ATCK.KW	NM	2.14	0.00%	NA	0.631	0.003	113.6	0.935	0.426	(3.4%)	35,586	21,441	0.3%	NM
= Al-Maidan Clinic For Oral Health Services Co.	MIDAN.KW	25.2	1.87	1.82%	0.06	0.825	0.000	167.1	0.910	0.548	0.7%	0	0	0.0%	7.4%
Health Care		25.2	2.00	1.82%				280.6			(1.0%)	35,586	21,441		NM
= Kuwait National Cinema Co.	KCIN.KW	6.6	1.09	5.82%	0.28	1.250	0.000	115.8	1.639	1.005	(16.7%)	72	87	0.5%	16.6%
▼ Kuwait Hotels Co.	KHOT.KW	11.3	1.50	0.00%	NA	0.183	(0.001)	11.4	0.291	0.165	(29.6%)	11,028	2,023	9.3%	13.2%
▼ IFA Hotels & Resorts Co.*	IFAH.KW	13.4	4.88	0.00%	0.79	0.859	(0.001)	250.1	1.590	0.768	(18.0%)	1,425,959	1,221,265	33.6%	36.3%
= Oula Fuel Marketing Co.	OULA.KW	16.9	1.37	3.02%	0.63	0.265	0.000	117.9	0.473	0.240	(7.0%)	326,284	86,758	31.3%	8.1%
▲ Kuwait Resorts Co.	MUNK.KW	27.8	0.82	2.27%	0.75	0.144	0.013	31.2	0.154	0.102	8.3%	917,070	129,174	7.6%	2.9%
▼ Jazeera Airways Co.	JAZK.KW	16.1	7.40	5.33%	0.77	1.596	(0.007)	351.1	1.905	1.265	(1.8%)	418,971	667,310	13.6%	45.8%
▼ Soor Fuel Marketing Co.	SOOR.KW	21.9	1.16	2.55%	0.51	0.274	(0.009)	115.3	0.346	0.240	0.0%	25,315	6,973	1.4%	5.3%
▲ Future Kid Entertainment and R.E Co.	KIDK.KW	NM	1.01	0.00%	0.28	0.112	0.002	13.4	0.147	0.092	(4.3%)	5,991,934	671,986	69.9%	NM
▲ Palms Agro Production Co.	PAPK.KW	13.9	2.08	0.00%	0.38	0.258	0.014	13.5	0.555	0.179	2.0%	144,136	36,304	35.5%	15.0%
▼ Ali Alghanim Sons Automotive Co.	ALG.KW	11.6	3.43	5.31%	0.48	1.002	(0.005)	361.5	1.082	0.918	(2.5%)	1,051,713	1,052,738	19.7%	29.5%
▼ Trolley General Trading Company Co.	TROLLEY.KW	32.1	7.92	0.00%	NA	0.940	(0.007)	258.5	0.999	0.711	28.6%	592,401	557,211	NA	24.6%
Consumer Discretionary		15.0	1.50	4.16%				1,640			(3.6%)	10,904,883	4,431,831		18.9%
= Zain	ZAIN.KW	10.6	2.08	5.98%	1.19	0.585	0.000	2,531.3	0.604	0.453	12.7%	2,508,556	1,471,526	8.0%	19.6%
▲ National Mobile Telecom Co.	OORE.KW	11.7	1.46	8.28%	0.59	1.802	0.002	903.1	1.892	1.055	27.4%	62,433	112,938	1.5%	12.4%
▲ Kuwait Telecommunication Co.	STC.KW	19.6	2.79	5.67%	0.64	0.670	0.010	669.2	0.769	0.537	(2.9%)	1,342,995	894,355	7.5%	14.2%
▲ Digitus Group for Digital Infrastructure, Data C	DIGITUS.KW	NM	42.14	0.00%	0.92	1.757	0.006	188.7	1.850	0.079	65.1%	156,347	275,415	19.9%	NM
Telecommunications		11.7	2.44	5.98%				4,292.3			14.5%	4,070,331	2,754,234		16.8%
▲ National Bank of Kuwait	NBKK.KW	13.5	1.70	4.13%	1.22	0.848	0.001	7,784.6	1.063	0.847	(12.3%)	7,069,772	6,013,717	6.7%	12.6%
▼ Gulf Bank	GBKK.KW	27.1	1.66	2.66%	1.05	0.338	(0.002)	1,417.0	0.362	0.304	(0.6%)	9,111,075	3,089,444	14.3%	6.1%
▼ Commercial Bank of Kuwait	CBKK.KW	8.8	1.37	4.88%	0.37	0.489	(0.005)	1,071.5	0.700	0.451	(4.9%)	8,319	4,039	0.5%	15.4%
▼ Ahli Bank of Kuwait	ABKK.KW	11.9	1.09	3.67%	0.66	0.271	(0.001)	744.9	0.301	0.264	(3.2%)	5,959,922	1,616,232	8.7%	9.2%
▲ Kuwait International Bank	KIBK.KW	16.7	1.31	2.80%	1.00	0.268	0.006	503.3	0.282	0.217	2.7%	22,889,099	6,079,079	38.4%	7.9%
= Burgan Bank	BURG.KW	15.8	0.84	3.10%	1.09	0.193	0.000	734.6	0.275	0.188	(7.5%)	11,452,742	2,205,310	8.5%	5.3%
▲ Kuwait Finance House	KFH.KW	24.3	2.68	3.06%	1.33	0.778	0.003	15,381.5	0.807	0.666	2.6%	8,318,217	6,481,416	5.3%	11.0%
▼ Boubyan Bank	BOUK.KW	31.2	3.25	1.05%	1.03	0.664	(0.001)	3,133.8	0.697	0.606	(0.6%)	639,854	427,009	3.3%	10.4%
▲ Warba Bank	WARB.KW	26.8	1.61	1.77%	1.00	0.282	0.001	1,331.9	0.306	0.211	(3.8%)	9,543,785	2,701,712	15.3%	6.0%
Banks		16.7	1.61	3.06%				32,103.0			(2.6%)	74,992,785	28,617,958		10.7%

Boursa Kuwait Daily Bulletin

Wednesday, May 13, 2026

Company	Reuters Ticker	Valuation Multiples				Price (KWD)		MKT Cap (KWD Mn.)	52 Weeks High (KWD)	52 Weeks Low (KWD)	YTD-26 Return #	Daily Trading Data			YTD-26 Capital Turnover	ROE
		Trailing P/E (X)	Trailing P/BV (X)	Dividend Yield	Beta	Closing	DTD Change					Volume (Shrs.)	Value (KWD)	YTD-26 ROE		
▲ Kuwait Insurance Co.	KINS.KW	15.3	0.81	5.11%	0.09	0.744	0.006	137.5	0.750	0.490	17.2%	569,403	424,137	2.1%	5.3%	
▼ Gulf Insurance Group	GINS.KW	8.5	0.80	0.00%	0.10	0.742	(0.058)	210.5	1.122	0.710	(10.6%)	660	500	0.0%	9.3%	
▼ Ahleiah Insurance Co.	AINS.KW	6.8	0.97	4.28%	0.15	0.690	(0.009)	172.5	0.885	0.609	(10.9%)	15,067	10,383	1.7%	14.1%	
= Warba Insurance and Reinsurance Co.	WINSRE.KW	9.9	0.82	7.94%	0.41	0.183	0.000	44.8	0.213	0.133	4.6%	88,036	15,928	25.0%	8.3%	
▼ Kuwait Reinsurance Co.	KWRE.KW	6.3	1.14	4.10%	0.10	0.364	(0.008)	124.5	0.475	0.277	(2.8%)	20,308	7,193	0.4%	18.3%	
▲ First Takaful Insurance Co.	FTIK.KW	NM	4.06	0.00%	0.47	0.234	0.005	39.0	0.245	0.123	4.0%	720,348	168,133	23.6%	0.0%	
▼ Wethaq Takaful Insurance Co.	WETH.KW	16.0	2.47	0.00%	0.59	0.122	(0.002)	13.5	0.179	0.033	14.0%	1,073,292	131,901	115.4%	15.4%	
= Bahrain Kuwait Insurance Co.	BKIK.KW	7.4	0.75	10.43%	0.01	0.191	0.000	28.5	0.191	0.191	0.00%	0	0	0.0%	10.2%	
Insurance		8.5	0.90	5.11%				770.8			(2.2%)	2,487,114	758,174		10.6%	
▼ Sokouk Holding Co.	SHCK.KW	6.2	1.15	0.00%	1.14	0.085	(0.001)	48.3	0.093	0.050	5.6%	2,958,938	250,969	20.5%	18.5%	
▲ Kuwait Real Estate Co.	KREK.KW	2.6	0.21	0.00%	0.96	0.371	0.001	39.5	0.449	0.304	(3.4%)	2,795,966	1,034,853	330.4%	7.8%	
▼ United Real Estate Co.	UREK.KW	61.3	1.85	0.00%	0.59	0.262	(0.003)	374.8	0.312	0.145	(1.1%)	1,917,754	502,380	12.5%	3.0%	
▲ National Real Estate Co.	NREK.KW	NM	0.73	0.00%	1.23	0.110	0.014	240.3	0.107	0.063	52.8%	62,967,598	6,556,916	35.4%	NM	
▼ Salhia Real Estate Co.	SREK.KW	40.2	1.35	3.67%	0.37	0.394	(0.003)	245.5	0.423	0.360	0.8%	2,029,210	796,658	22.2%	3.4%	
▼ Tamdeen Real Estate Co.	TAMK.KW	8.7	0.61	3.79%	0.20	0.439	(0.008)	176.3	0.480	0.323	(3.3%)	324	142	0.6%	7.1%	
▲ Ajjal Real Estate Entertainment Co.	AREC.KW	10.3	0.45	6.44%	0.43	0.309	0.002	64.6	0.335	0.233	(1.9%)	92,852	28,303	1.1%	4.4%	
▲ Arab Real Estate Co.	ARAB.KW	NM	1.71	0.00%	1.18	0.196	0.003	75.7	0.315	0.077	(10.5%)	388,961	75,788	75.9%	NM	
▲ AL-Enma'a Real Estate Co.*	ENMA.KW	12.7	1.08	4.31%	0.69	0.116	0.003	40.7	0.119	0.070	32.7%	13,497,354	1,560,272	61.8%	8.5%	
▼ Mabanee Co.	MABK.KW	18.2	2.10	2.03%	1.01	0.983	(0.009)	1,540.9	1.118	0.745	(4.4%)	1,037,975	1,023,604	8.3%	11.5%	
▲ Injazzat Real Estate Development Co.	INJA.KW	20.8	0.90	3.62%	0.33	0.162	0.005	54.8	0.235	0.093	(1.8%)	595,974	94,992	4.2%	4.3%	
▼ The Commercial Real Estate Co.	TIJK.KW	21.7	1.18	1.53%	0.67	0.187	(0.001)	354.5	0.233	0.171	(7.9%)	1,100,663	206,837	27.7%	5.4%	
▲ Sanam Real Estate Co.	SANK.KW	34.6	2.88	0.00%	0.50	0.317	0.001	69.9	0.324	0.140	52.4%	1,233,349	389,318	117.7%	8.3%	
▲ A'ayan Real Estate Co.	AYRE.KW	22.0	1.16	3.33%	0.70	0.180	0.001	74.8	0.184	0.090	35.3%	506,714	90,513	46.4%	5.2%	
▲ Aqar Real Estate Investment Co.	AQAR.KW	13.0	0.72	3.04%	0.09	0.098	0.000	22.8	0.114	0.068	3.3%	356,901	35,028	20.7%	5.5%	
▼ Kuwait Real Estate Holding Co.	ALAQ.KW	6.4	3.14	0.00%	0.42	0.062	(0.002)	11.7	0.086	0.030	0.2%	1,663,227	103,541	42.8%	48.7%	
▼ MAZAYA Holding Co.	MAZA.KW	24.6	0.92	0.00%	1.06	0.079	(0.001)	42.6	0.094	0.056	7.2%	1,627,383	129,387	17.2%	3.8%	
▲ Tijara Real Estate & Investment Co.	TIJA.KW	23.3	1.24	3.50%	0.57	0.143	0.001	52.9	0.166	0.059	46.8%	7,059,252	1,026,564	72.0%	5.3%	
▼ Arkan Al-Kuwait Real Estate Co. *	ARKK.KW	32.8	1.90	3.74%	0.27	0.294	(0.007)	91.6	0.382	0.104	(3.3%)	708,689	210,851	43.8%	5.8%	
▲ Al-Argan International Real Estate Co.	ARGK.KW	NM	0.53	0.00%	0.49	0.133	0.002	38.8	0.187	0.078	19.8%	5,445,352	719,236	142.1%	NM	
▼ Munshaat Real Estate Projects Co.	MUNS.KW	5.8	1.71	2.26%	0.70	0.221	(0.005)	71.2	0.256	0.167	(9.8%)	1,050,697	235,082	5.0%	29.3%	
▼ Kuwait Business Town Real Estate Co.	KBTK.KW	27.5	1.10	0.00%	1.15	0.095	(0.000)	56.9	0.148	0.072	(1.4%)	1,006,233	96,201	61.9%	4.0%	
= MENA Real Estate Co. *	MENK.KW	NM	1.18	0.00%	0.89	0.110	0.000	20.9	0.139	0.094	(6.0%)	495,336	54,141	111.1%	NM	
▲ Real Estate Trade Centers Co.	MARA.KW	10.1	1.38	0.00%	0.56	0.201	0.001	27.9	2.660	0.136	(52.5%)	401,271	80,555	261.3%	13.7%	
= Mashaer Holding Co.	MASHAER.KW	13.5	1.24	3.89%	0.58	0.126	0.000	20.2	0.132	0.074	15.6%	2,097,810	265,212	34.0%	9.2%	
= Al Masaken Intl. Real Estate Dev. Co.	MASKN.KW	NM	-3.89	0.00%	0.39	0.055	0.000	5.4	0.074	0.041	0.0%	0	0	0.0%	NM	
= Dalqan Real Estate Co.	DALQ.KW	2.8	0.92	0.00%	0.12	0.104	0.000	6.9	0.338	0.084	(40.9%)	0	0	161.4%	32.7%	
▼ Dar Al Thuraya Real Estate Co.	THURY.KW	NM	2.76	0.00%	0.02	0.380	(0.010)	55.7	0.460	0.090	101.1%	40,482	15,543	28.6%	1.3%	
▼ Osos Holding Group Co.	OSOS.KW	8.4	1.21	0.00%	0.37	0.207	(0.003)	22.6	0.249	0.120	11.3%	87,903	18,354	32.5%	14.4%	
▲ KFH Capital REIT	BAITAKREIT.KW	NA	NA	0.10%	0.08	1.205	0.004	28.4	1.311	1.120	(2.9%)	27,587	33,229	16.9%	NA	
Real Estate		13.5	1.18	3.56%				3,977.1			0.3%	113,191,755	15,634,469		4.1%	

Boursa Kuwait Daily Bulletin

Wednesday, May 13, 2026

Company	Reuters Ticker	Valuation Multiples				Price (KWD)		MKT Cap (KWD Mn.)	52 Weeks High (KWD)	52 Weeks Low (KWD)	YTD-26 Return #	Daily Trading Data			YTD-26 Capital Turnover	ROE
		Trailing P/E (X)	Trailing P/BV (X)	Dividend Yield	Beta	Closing	DTD Change					Volume (Shrs.)	Value (KWD)	YTD-26		
▼ Kuwait Investment Co.	KINV.KW	5.4	0.75	9.32%	0.98	0.192	(0.004)	105.8	0.256	0.157	(17.6%)	1,486,233	287,799	29.2%	14.0%	
▲ Commercial Facilities Co.	FACI.KW	9.1	0.85	7.02%	0.50	0.282	0.006	143.2	0.310	0.230	(2.4%)	18,576	5,109	1.8%	9.3%	
= Int'l Financial Advisors Co.	IFIN.KW	20.0	1.80	0.00%	1.24	0.425	0.000	230.6	0.516	0.345	(8.8%)	5,623,177	2,398,416	53.9%	9.0%	
▼ National Investment Co.	NINV.KW	8.3	0.83	9.95%	1.32	0.251	(0.001)	200.1	0.346	0.220	(16.9%)	300,226	75,408	12.5%	10.0%	
▲ Kuwait Projects Co.(Holding)	KPRO.KW	25.9	0.66	0.00%	0.82	0.085	0.001	422.7	0.097	0.075	6.3%	23,407,461	1,968,745	15.2%	2.5%	
▼ Coast Invest. & Development Co.	COAS.KW	62.9	0.66	0.00%	1.24	0.072	(0.000)	33.3	0.084	0.055	5.3%	1,085,592	78,333	27.1%	1.1%	
▼ The Securities House Co.	SECH.KW	NM	0.84	0.00%	1.21	0.086	(0.001)	34.3	0.097	0.060	5.9%	5,420,731	470,839	56.2%	NM	
▼ Arzan Financial Group For Fin. & Invest.	ARZA.KW	15.0	1.56	0.50%	1.04	0.384	(0.004)	348.5	0.400	0.238	3.2%	1,495,091	578,202	30.1%	10.4%	
▲ Kuwait Financial Centre	MARKZ.KW	6.3	0.60	5.89%	0.82	0.135	0.001	68.2	0.179	0.126	(14.6%)	113,168	15,319	6.6%	9.5%	
= Kuwait & M.E. Financial Inv. Co.	KMEF.KW	15.3	1.54	0.00%	0.58	0.184	0.000	40.5	0.191	0.132	18.7%	2,696,200	499,845	63.4%	10.1%	
▼ First Investment Co.	OLAK.KW	5.5	1.32	0.00%	1.18	0.129	(0.002)	57.5	0.168	0.031	4.0%	5,099,552	662,874	216.6%	24.1%	
= Gulf Investment House	GIHK.KW	NM	4.42	0.00%	0.93	0.541	0.000	219.9	0.709	0.401	(0.6%)	1,232,862	670,767	2.4%	1.9%	
= A'ayan Leasing & Investment Co.	AAYA.KW	9.1	1.49	2.82%	1.28	0.266	0.000	176.6	0.280	0.155	15.7%	3,382,139	900,932	94.9%	16.4%	
▲ Bayan Investment Co.	BAYK.KW	16.1	1.37	0.00%	0.75	0.081	0.001	19.2	0.101	0.047	7.0%	1,100,773	88,518	85.2%	8.5%	
= Osoul Investment Co.	OSUL.KW	46.3	3.23	0.00%	0.49	0.360	0.000	45.6	0.384	0.139	44.0%	674,281	243,353	67.3%	7.0%	
▼ Kuwait Finance & Investment Co.	KFSK.KW	9.2	1.23	0.00%	0.34	0.150	(0.003)	36.8	0.223	0.118	2.7%	1,258,688	189,226	8.8%	13.4%	
▼ Kamco Investment Co.	KAMC.KW	7.1	0.94	5.26%	0.66	0.190	(0.001)	65.0	0.232	0.107	(10.0%)	115,078	21,720	32.8%	13.2%	
▼ National International Holding Co.	NIHK.KW	20.9	0.89	1.18%	0.82	0.160	(0.009)	39.8	0.186	0.102	13.5%	14,707,137	2,421,711	141.2%	4.3%	
▼ UniCap Investment and Finance	UNICAP.KW	NM	3.62	0.00%	0.72	0.289	(0.008)	64.6	0.403	0.237	(5.2%)	79,215	23,047	14.6%	2.2%	
▲ Al Madar Finance & Investment Co.	MADR.KW	NM	1.24	0.00%	0.37	0.133	0.001	27.5	0.185	0.090	14.7%	1,527,118	203,062	69.8%	0.3%	
= Al-Deera Holding	DEER.KW	12.1	1.46	0.00%	0.88	0.580	0.000	59.9	0.872	0.302	(1.7%)	892,117	519,399	178.2%	12.0%	
▲ Al-Safat Investment Co.	ALSAFAT.KW	14.9	2.34	1.86%	1.97	0.263	0.002	83.5	0.312	0.120	(1.5%)	5,819,756	1,529,041	34.1%	15.7%	
▼ Ektitab Holding Co.	EKTT.KW	NM	9.44	0.00%	1.04	0.034	(0.003)	10.7	0.050	0.012	(9.9%)	7,169,632	248,096	242.3%	NM	
= NOOR Financial Investment Co.	NOOR.KW	6.1	1.22	3.58%	1.22	0.414	0.000	211.3	0.504	0.285	(5.9%)	632,437	262,432	20.3%	19.9%	
▼ Tamdeen Investment Co.	TAMI.KW	12.0	0.53	4.91%	0.34	0.988	(0.232)	197.6	1.525	0.657	(29.4%)	539	595	0.0%	4.5%	
▲ Kuwait Emirates Holding Co.	EMIRATES.KW	NM	1.59	0.00%	0.52	0.124	0.001	21.9	0.500	0.056	(13.3%)	137,848	16,479	19.7%	1.4%	
▲ Asiya Capital Investment Co.	ASIYA.KW	NM	0.59	0.00%	0.70	0.041	0.000	33.1	0.062	0.034	(13.2%)	3,039,705	122,418	36.0%	NM	
= Rasiyat Holding Co.	RASIYAT.KW	28.7	4.60	0.00%	NA	0.470	0.000	70.5	0.491	0.333	17.8%	2,310,916	1,083,849	72.9%	16.0%	
▼ Alimtiq Investment Group	ALIMK.KW	NM	0.87	0.00%	1.05	0.064	(0.000)	72.3	0.080	0.030	7.8%	6,444,698	411,550	51.0%	NM	
▼ Manazel Holding Co.	MANK.KW	NM	1.46	0.00%	1.37	0.050	(0.002)	21.5	0.074	0.030	(17.1%)	10,955,666	554,318	89.2%	NM	
= National Industries Group	NIND.KW	8.9	1.09	1.95%	1.42	0.257	0.000	650.3	0.310	0.219	(14.0%)	3,778,308	972,579	19.7%	12.2%	
▼ Warba Capital Holding Co.	WARBACAP.KW	NM	5.85	0.00%	0.57	0.604	(0.005)	18.1	0.967	0.225	(16.8%)	12,063	7,232	35.1%	6.5%	
▼ Privatization Holding Co.	KPPC.KW	NM	1.29	0.00%	0.84	0.075	(0.000)	45.8	0.102	0.046	(1.3%)	2,014,582	151,227	29.2%	NM	
▼ Credit Rating & Collection Co.	TAHS.KW	NM	4.94	0.00%	0.25	0.152	(0.004)	25.1	0.485	0.040	(3.8%)	133,085	20,133	11.5%	0.9%	
= Valmore Holding	VALMORE.KW	6.1	1.73	6.43%	0.21	0.213	0.000	252.0	0.250	0.180	(7.0%)	49,468	10,518	2.0%	28.1%	
▲ GFH Financial Group	GFH.KW	17.1	2.35	3.89%	0.96	0.192	0.002	735.9	0.202	0.088	1.6%	35,802,917	6,863,028	45.9%	13.7%	
▼ Inovent	INOV.KW	NM	0.86	0.00%	0.92	0.101	(0.001)	31.0	0.135	0.083	(1.9%)	10,813,761	1,104,820	238.0%	NM	
▼ Amar For Finance and Leasing Co.	AMARF.KW	23.9	0.91	0.00%	0.11	0.105	(0.005)	20.5	0.126	0.063	2.9%	3,887,189	415,413	36.6%	3.8%	
▲ Al-Manar Financing & Leasing Co.	ALMANAR.KW	11.4	0.94	3.42%	0.60	0.117	0.001	30.9	0.133	0.061	10.4%	66,073	7,596	24.6%	8.3%	
▼ Boursa Kuwait Securities Co	BOURSA.KW	20.0	7.10	4.53%	0.95	2.803	(0.024)	562.8	4.304	2.627	(24.2%)	255,266	718,761	15.5%	35.6%	
▼ Beyout Investment Group Holding Co.	BEYOUT.KW	13.4	2.16	2.72%	0.72	0.368	(0.001)	110.4	0.459	0.338	(6.8%)	2,970,289	1,090,858	44.5%	16.1%	
Financial Services		12.8	1.32	3.89%				5,644.7			(6.9%)	168,009,613	27,913,567		7.5%	

Boursa Kuwait Daily Bulletin

Wednesday, May 13, 2026

Company	Reuters Ticker	Valuation Multiples				Price (KWD)		MKT Cap (KWD Mn.)	52 Weeks High (KWD)	52 Weeks Low (KWD)	YTD-26 Return #	Daily Trading Data			YTD-26 Capital Turnover	ROE
		Trailing P/E (X)	Trailing P/BV (X)	Dividend Yield	Beta	Closing	DTD Change					Volume (Shrs.)	Value (KWD)	ROE		
▼ Automated Systems Co.	ASCK.KW	NM	3.03	0.00%	0.35	0.340	(0.009)	34.0	0.354	0.098	159.5%	1,775,057	609,580	155.6%	NM	
Technology		NM	3.03	0.00%				34.0			159.5%	1,775,057	609,580		NM	
▼ Shamal Az-Zour Al-Oula Power and Water Co.	AZNOULA.KW	10.8	1.20	4.73%	0.60	0.148	(0.001)	162.8	0.174	0.136	(0.7%)	795,653	117,763	8.2%	11.1%	
Utilities		10.8	1.20	4.73%				162.8			(0.7%)	795,653	117,763		11.1%	

Boursa Kuwait	13.93	1.32	2.4%					52,888.3			(1.41%)	452,865,346	101,489,832		8.7%
----------------------	--------------	-------------	-------------	--	--	--	--	-----------------	--	--	----------------	--------------------	--------------------	--	-------------

Year-to-Date 2026 Top Movers & Most Active Stocks

YTD Top % Gainers	Close (KWD)	Percent Change
Automated Systems Co.	0.340	159.5%
National Cleaning Co.	0.257	112.4%
Dar Al Thuraya Real Estate Co.	0.380	101.1%
Digitus Group for Digital Infrastructure, Data Centers & Con	1.757	65.1%
National Real Estate Co.	0.110	52.8%

YTD Most Active by Volume	Close (KWD)	Volume (Shrs.)
GFH Financial Group	0.192	1,760,058,248
National Cleaning Co.	0.257	1,206,858,631
Kuwait Finance House	0.778	1,044,313,285
First Investment Co.	0.129	965,866,301
National Real Estate Co.	0.110	772,486,975

YTD Top % Losers	Close (KWD)	Percent Change
Equipment Holding Co.	0.243	(56.0%)
Real Estate Trade Centers Co.	0.201	(52.5%)
Dalqan Real Estate Co.	0.104	(40.9%)
Kuwait Hotels Co.	0.183	(29.6%)
Tamdeen Investment Co.	0.988	(29.4%)

YTD Most Active by Value	Close (KWD)	Value (KWD)
Kuwait Finance House	0.778	843,487,731
National Bank of Kuwait	0.848	569,366,197
GFH Financial Group	0.192	322,640,108
Warba Bank	0.282	212,946,348
National Cleaning Co.	0.257	205,785,055

* Different Fiscal Year Company

Disclaimer & Important Disclosures

Kamco Invest is authorized and fully regulated by the Capital Markets Authority ("CMA, Kuwait") and partially regulated by the Central Bank of Kuwait ("CBK").

This document is provided for informational purposes only. Nothing contained in this document constitutes investment, an offer to invest, legal, tax or other advice or guidance and should be disregarded when considering or making investment decisions. In preparing this document, Kamco Invest did not take into account the investment objectives, financial situation and particular needs of any particular person. Accordingly, before acting on this document, investors should independently evaluate the investments and strategies referred to herein and make their own determination of whether it is appropriate in light of their own financial circumstances and objectives. The entire content of this document is subject to copyright with all rights reserved. This research and the information contained herein may not be reproduced, distributed or transmitted in Kuwait or in any other jurisdiction to any other person or incorporated in any way into another document or other material without our prior written consent.

Analyst Certification

Each of the analysts identified in this report, if any and where applicable, certifies, with respect to the sector, companies or securities that the individual analyses, that (1) the views expressed in this report reflect his or her personal views about all of the subject companies and securities and (2) no part of his or her compensation was, is or will be directly or indirectly dependent on the specific recommendations or views expressed in this report.

Kamco Invest Ratings

Kamco Invest research is based on the analysis of regional and country economics, industries and company fundamentals. Kamco Invest company research reflects a long-term (12-month) target price for a company or stock.

The ratings bands are:

* **Outperform:** Target Price represents expected returns $\geq 10\%$ in the next 12 months

* **Neutral:** Target Price represents expected returns between -10% and $+10\%$ in the next 12 months

* **Underperform:** Target Price represents an expected return of $< -10\%$ in the next 12 months

In certain circumstances, ratings may differ from those implied by a fair value target using the criteria above. Kamco Invest policy is to maintain up-to-date fair value targets on the companies under its coverage, reflecting any material changes to the analyst's outlook on a company. Share price volatility may cause a stock to move outside the rating range implied by Kamco Invest's fair value target. Analysts may not necessarily change their ratings if this happens, but are expected to disclose the rationale behind their view to Kamco Invest clients.

Any terms and conditions proposed by you which are in addition to or which conflict with this Disclaimer are expressly rejected by Kamco Invest and shall be of no force or effect. The information contained in this document is based on current trade, statistical and other public information we consider reliable. We do not represent or warrant that such information is fair, accurate or complete and it should not be relied upon as such. Kamco Invest has no obligation to update, modify or amend this document or to otherwise notify a recipient thereof in the event that any opinion, forecast or estimate set forth herein, changes or subsequently becomes inaccurate. The publication is provided for informational purposes only and is not intended for trading purposes. The information on publications does not give rise to any legally binding obligation and/or agreement, including without limitation any obligation to update such information. You shall be responsible for conducting your own investigation and analysis of the information contained or referred to in this document and of evaluating the merits and risks involved in the securities forming the subject matter of this or other such document. Moreover, the provision of certain data/information in the publication may be subject to the terms and conditions of other agreements to which Kamco Invest is a party.

Nothing in this document should be construed as a solicitation or offer, or recommendation, to acquire or dispose of any investment or to engage in any other transaction, or to provide any investment advice or service. This document is directed at Professional Clients and not Retail Clients within the meaning of CMA rules. Any other persons in receipt of this document must not rely upon or otherwise act upon it. Entities and individuals into whose possession this document comes are required to inform themselves about, and observe such restrictions and should not rely upon or otherwise act upon this document where it is unlawful to make to such person such an offer

*Kamco Investment Company (DIFC) Limited ("Kamco Invest DIFC"), Office 205, Level 2, Gate Village 1, Dubai International Financial Centre, a wholly owned subsidiary of Kamco Investment Company KSC (Public), is regulated by the Dubai Financial Services Authority (DFSA). Kamco Invest DIFC may only undertake the financial services activities that fall within the scope of its existing DFSA licence. The information in this document may be distributed by Kamco Invest DIFC on behalf of Kamco Investment Company KSC (Public). This document is intended for Professional Clients or Market Counterparties only as defined by the DFSA, and no other person should act upon it. This document may not be distributed in Saudi Arabia except to such persons as are permitted under the Offers of Securities Regulations issued by the Capital Market Authority. The Capital Market Authority does not make any representation as to the accuracy or completeness of this document, and expressly disclaims any liability whatsoever for any loss arising from, or incurred in reliance upon, any part of this document. The recipients of this document hereby should conduct their own due diligence on the accuracy of the information relating to the contents of this document. If you do not understand the contents of this document you should consult an authorized financial advisor.

Risk Warnings

Any prices, valuations or forecasts are indicative and are not intended to predict actual results, which may differ substantially from those reflected. The value of an investment may go up as well as down. The value of and income from any investment may fluctuate from day to day as a result of changes in relevant economic markets (including, without limitation, foreseeable or unforeseeable changes in interest rates, foreign exchange rates, default rates, prepayment rates, political or financial conditions, etc.).

Past performance is not indicative of future results. Any opinions, estimates, valuations or projections (target prices and ratings in particular) are inherently imprecise and a matter of judgment. They are statements of opinion and not of fact, based on current expectations, estimates and projections, and rely on beliefs and assumptions. Actual outcomes and returns may differ materially from what is expressed or forecasted. There are no guarantees of future performance. Certain transactions, including those involving futures, options, and other derivatives, give rise to substantial risk and are not suitable for all investors. This document does not propose to identify or to suggest all of the risks (direct or indirect) which may be associated with the investments and strategies referred to herein.

Conflict of Interest

Kamco Invest and its affiliates provide full investment banking services, and they and their directors, officers and employees, may take positions which conflict with the views expressed in this document. Salespeople, traders, and other professionals of Kamco Invest may provide oral or written market commentary or trading strategies to their clients and our proprietary trading desks that are contrary to the opinions expressed in this document. Our asset management area, our proprietary trading desks and investing businesses may make investment decisions that are inconsistent with the recommendations or views expressed in this document. Kamco Invest may have or seek investment banking or other business relationships for which it will receive compensation from the companies that are the subject of this document. Facts and views presented in this document have not been reviewed by, and may not reflect information known to, professionals in other Kamco Invest business areas, including investment banking personnel. United Gulf Bank, Bahrain owns majority of Kamco Invest's shareholding and this ownership may create, or may create the appearance of, conflicts of interest.

No Liability & Warranty

Kamco Invest makes neither implied nor expressed representations or warranties and, to the fullest extent permitted by applicable law, we hereby expressly disclaim any and all express, implied and statutory representations and warranties of any kind, including, without limitation, any warranty as to accuracy, timeliness, completeness, and fitness for a particular purpose and/or non-infringement. Kamco Invest will accept no liability in any event including (without limitation) your reliance on the information contained in this document, any negligence for any damages or loss of any kind, including (without limitation) direct, indirect, incidental, special or consequential damages, expenses or losses arising out of, or in connection with your use or inability to use this document, or in connection with any error, omission, defect, computer virus or system failure, or loss of any profit, goodwill or reputation, even if expressly advised of the possibility of such loss or damages, arising out of or in connection with your use of this document. We do not exclude our duties or liabilities under binding applicable law.