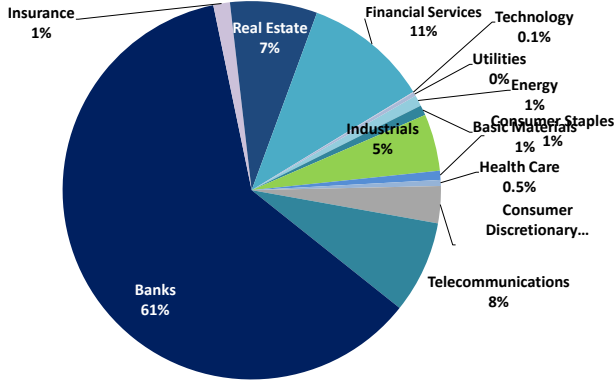


Boursa Kuwait Daily Report

May 3, 2026

Sector Weight by Market Cap



Top 10 Companies by Market Capitalization

Company Name	Market Cap. (Mn KWD)	P/E (X)	ROE* (%)
1- Kuwait Finance House	15,598.9	24.7	11.0%
2- National Bank of Kuwait	8,032.4	14.0	12.6%
3- Boubyan Bank	3,195.2	31.8	10.4%
4- Zain	2,488.1	10.4	19.6%
5- Mabaneer Co.	1,570.7	18.6	11.5%
6- Gulf Bank	1,429.6	27.3	6.1%
7- Warba Bank	1,383.9	27.9	6.0%
8- Commercial Bank of Kuwait	1,060.6	8.8	15.4%
9- National Mobile Telecom Co.	922.1	12.0	12.4%
10- Burgan Bank	772.6	16.6	5.3%
Total	36,454	18.43	11.5%

*: ROE is calculated based on FY 2025 net profit & shareholders' equity as of 31-December-25

Top Movers and Most Active Stocks

Today's Top % Gainers	Close (KWD)	Change (KWD)	Percent Change
Alimtiiaz Investment Group	0.064	0.008	13.5%
Tijara Real Estate & Investment Co.	0.132	0.012	10.0%
Kuwait Hotels Co.	0.201	0.018	9.8%
Action Energy Company K.S.C.C	0.288	0.023	8.7%
AL-Enma'a Real Estate Co.	0.105	0.007	7.4%

Today's Top % Losers	Close (KWD)	Change (KWD)	Percent Change
Dar Al Thuraya Real Estate Co.	0.416	(0.032)	(7.1%)
Gulf Investment House	0.448	(0.025)	(5.3%)
Gulf Insurance Group	0.761	(0.039)	(4.9%)
Injazzat Real Estate Development Co.	0.172	(0.006)	(3.4%)
Ajjal Real Estate Entertainment Co.	0.306	(0.010)	(3.2%)

Today's Most Active by Volume	Close (KWD)	Percent Change	Volume (Shares)
Alimtiiaz Investment Group	0.064	13.5%	62,182,161
GFH Financial Group	0.200	2.6%	58,882,545
National Cleaning Co.	0.220	3.3%	25,440,570
Inovent	0.103	2.7%	24,329,463
Manazel Holding Co.	0.052	7.2%	23,741,709

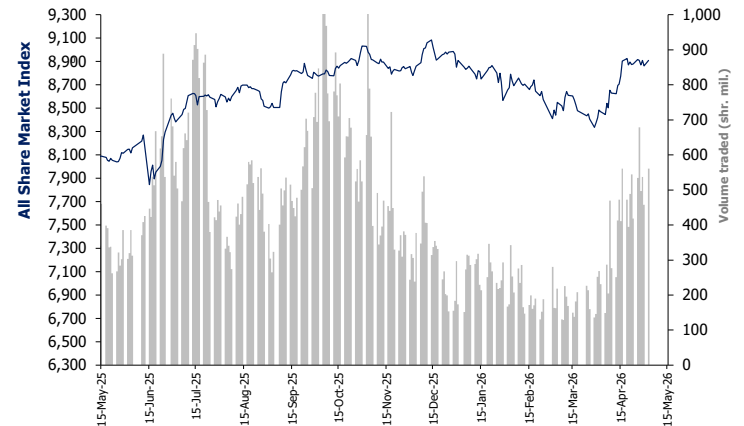
Source: Boursa Kuwait, Kamco Invest Research

Sector Returns

	Index Close	DTD	DTD % Chg	MTD % Chg	YTD % Chg
All Share Market Index	8,908.3	▲	0.5%	0.5%	0.0%
Energy	1,857.5	▲	2.8%	2.8%	7.1%
Basic Materials	819.6	▲	1.2%	1.2%	(1.7%)
Industrials	758.1	▲	1.0%	1.0%	0.1%
Consumer Staples	1,390.5	▲	0.9%	0.9%	2.3%
Health Care	564.5	▲	1.4%	1.4%	(4.5%)
Consumer Discretionary	2,381.6	▲	1.3%	1.3%	(0.1%)
Telecommunications	1,386.7	▲	0.4%	0.4%	13.1%
Banks	2,156.9	▲	0.4%	0.4%	(0.6%)
Insurance	1,897.7	▼	(1.5%)	(1.5%)	(2.6%)
Real Estate	2,033.9	▲	0.2%	0.2%	0.2%
Financial Services	1,819.6	▲	1.1%	1.1%	(5.3%)
Technology	2,015.2	▲	0.4%	0.4%	111.5%
Utilities	392.1	▲	0.7%	0.7%	0.0%

Market Breadth	▲ 93	▼ 31	▬ 15		
Benchmark Return	Closing Value	DTD Chg	DTD % Chg	MTD % Chg	YTD % Chg
Premier Market Index	9,435.11	53.3	0.6%	0.6%	(0.7%)
Main 50 Index	9,472.19	111.0	1.2%	1.2%	9.0%
Main Market Index	8,605.06	34.5	0.4%	0.4%	3.6%
All Share Market Index	8,908.30	47.9	0.5%	0.5%	0.0%
Market Cap (KWD Mn)	53,665.30	277.53	0.5%	0.5%	0.2%

Index Performance relative to Volume



Market Trading Data and Volatility

Trading Indicators	Today's Value	DTD Chg	DTD % Chg	Average Daily YTD 2026	YTD 2025
Volume (Shrs Mn)	560.8	103.7	22.7%	274.7	423.6
Value Traded (KWD Mn)	102.9	(5.55)	(5.1%)	75.2	112.3
No. of Trades	30,175	(396.0)	(1.3%)	19,259	20,163

Today's Most Active by Value	Close (KWD)	Percent Change	Value (KWD)
GFH Financial Group	0.200	2.6%	11,674,719
National Cleaning Co.	0.220	3.3%	5,594,193
Kuwait Finance House	0.789	(0.1%)	4,318,127
Alimtiiaz Investment Group	0.064	13.5%	3,812,376
Kuwait Real Estate Co.	0.355	2.0%	3,719,249

Boursa Kuwait - Premier Market

Sunday, May 3, 2026

	Premier Market Stocks	Closing Price			Market Capitalization			Valuation Multiples				ROE	YTD-26 Price Return	YTD-26 Trading Indicators	
		KWD	DTD Chg. (KWD)	D-T-D Return	KWD Mn	Weight in Premier Index	Weight in Boursa Kuwait	P/E (X)	P/BV (X)	Yield	Beta			Volume (Mn Shrs)	Value (KWD Mn)
▲	National Bank of Kuwait	0.875	0.015	1.7%	8,032	17.9%	15.0%	14.0	1.76	4.0%	1.22	12.6%	(9.5%)	561.95	526.25
▲	Gulf Bank	0.341	0.002	0.6%	1,430	3.2%	2.7%	27.3	1.67	2.6%	1.05	6.1%	0.3%	548.13	186.58
▲	Ahli Bank	0.281	0.002	0.7%	772	1.7%	1.4%	12.3	1.13	3.5%	0.66	9.2%	0.4%	212.35	63.11
=	Kuwait International Bank	0.272	0.000	0.0%	511	1.1%	1.0%	17.0	1.33	2.8%	1.00	7.9%	4.2%	598.50	167.26
▲	Burgan Bank	0.203	0.002	1.0%	773	1.7%	1.4%	16.6	0.89	3.0%	1.09	5.3%	(2.7%)	287.03	59.47
▼	Kuwait Finance House	0.789	(0.001)	(0.1%)	15,599	34.8%	29.1%	24.7	2.71	3.0%	1.33	11.0%	4.1%	956.58	774.67
▼	Boubyan Bank	0.677	(0.002)	(0.3%)	3,195	7.1%	6.0%	31.8	3.31	1.0%	1.03	10.4%	1.3%	145.21	99.51
▲	Kuwait Investment Co.	0.197	0.002	1.0%	109	0.2%	0.2%	5.5	0.77	9.1%	0.98	14.0%	(15.5%)	135.57	28.19
▲	Int'l Financial Advisors Co.	0.416	0.005	1.2%	226	0.5%	0.4%	19.6	1.76	0.0%	1.24	9.0%	(10.7%)	249.93	102.51
▲	National Investments Co	0.262	0.001	0.4%	209	0.5%	0.4%	8.7	0.87	9.5%	1.32	10.0%	(13.2%)	90.33	24.60
▲	Kuwait Projects Co. (Holding)	0.086	0.001	1.1%	428	1.0%	0.8%	26.2	0.66	0.0%	0.82	2.5%	7.7%	458.26	37.47
▲	Arzan Financial Group for Financing & In	0.366	0.003	0.8%	332	0.7%	0.6%	14.3	1.48	0.5%	1.04	10.4%	(1.6%)	247.94	86.52
▲	Aayan Leasing and Investment	0.263	0.009	3.5%	175	0.4%	0.3%	8.9	1.47	2.9%	1.28	16.4%	14.3%	583.98	132.95
▲	Kuwait Real Estate Co.	0.355	0.007	2.0%	38	0.1%	0.1%	2.5	0.20	0.0%	0.96	7.8%	(7.6%)	315.86	111.39
▼	United Real Estate Co.	0.262	(0.006)	(2.2%)	375	0.8%	0.7%	61.3	1.85	0.0%	0.59	3.0%	(1.1%)	169.97	47.29
▲	Salhia Real Estate Co.	0.396	0.001	0.3%	247	0.6%	0.5%	40.4	1.36	3.7%	0.37	3.4%	1.3%	124.15	49.32
▼	Mabane Co.	1.002	(0.003)	(0.3%)	1,571	3.5%	2.9%	18.6	2.14	2.0%	1.01	11.5%	(2.6%)	124.27	123.77
▲	The Commercial Real Estate Co.	0.193	0.001	0.5%	366	0.8%	0.7%	22.4	1.22	1.5%	0.67	5.4%	(4.9%)	498.18	105.09
▲	National Industries Group (Holding)	0.260	0.001	0.4%	658	1.5%	1.2%	9.0	1.10	1.9%	1.42	12.2%	(13.0%)	465.84	121.20
▲	Gulf Cable and Electrical Industries	1.964	0.032	1.7%	409	0.9%	0.8%	18.4	1.18	3.5%	0.98	6.4%	(6.5%)	21.08	41.80
▼	Heavy Engineering Industries and Shipbu	0.767	(0.005)	(0.6%)	152	0.3%	0.3%	15.5	1.87	3.3%	0.66	12.1%	(1.8%)	44.64	36.87
▲	Boubyan Petrochemical Co.	0.626	0.012	2.0%	335	0.7%	0.6%	18.4	1.32	6.4%	0.73	7.2%	6.6%	73.32	42.54
▲	Agility Public Warehousing Co.	0.146	0.002	1.4%	373	0.8%	0.7%	NM	0.65	1.3%	1.55	NM	3.5%	457.71	63.35
▲	Mobile Telecommunications Co.	0.575	0.005	0.9%	2,488	5.6%	4.6%	10.4	2.05	0.0%	1.19	19.6%	10.8%	313.87	171.45
▲	Human Soft Holding Co.	2.410	0.009	0.4%	325	0.7%	0.6%	9.1	2.93	11.4%	0.50	32.1%	(8.2%)	14.46	37.74
▲	IFA Hotels & Resorts Co.	0.904	0.019	2.1%	263	0.6%	0.5%	14.1	5.13	0.0%	0.79	36.3%	(13.7%)	82.66	73.30
▲	Combined Group Contracting Co.	0.989	0.029	3.0%	169	0.4%	0.3%	10.7	2.37	3.0%	0.70	22.1%	(13.8%)	34.44	32.76
▲	Oula Fuel Marketing Co.	0.275	0.004	1.5%	122	0.3%	0.2%	17.6	1.43	2.9%	0.63	8.1%	(3.5%)	119.55	31.78
=	Jazeera Airways Co.	1.660	0.000	0.0%	365	0.8%	0.7%	16.8	7.69	5.1%	0.77	45.8%	2.1%	26.46	43.59
▲	GFH Financial Group BSC	0.200	0.005	2.6%	767	1.7%	1.4%	17.8	2.45	3.7%	0.96	13.7%	5.8%	1,417.72	255.26
▲	Warba Bank	0.293	0.002	0.7%	1,384	3.1%	2.6%	27.9	1.67	1.7%	1.00	6.0%	0.0%	669.36	198.27
▼	Kuwait Telecommunication Co.	0.640	(0.008)	(1.2%)	639	1.4%	1.2%	18.7	2.67	5.9%	0.64	14.2%	(7.2%)	62.01	41.29
▲	Mezzan Holding Co.	1.290	0.012	0.9%	401	0.9%	0.7%	23.1	3.12	3.5%	0.50	13.5%	3.2%	27.87	32.86
▼	Integrated holding Co.	0.420	(0.001)	(0.2%)	106	0.2%	0.2%	19.2	1.66	3.6%	0.55	8.6%	(6.7%)	123.99	51.21
▲	Boursa Kuwait Securities Co.	2.836	0.016	0.6%	569	1.3%	1.1%	20.2	7.18	4.5%	0.94	35.6%	(23.4%)	28.56	85.76
▲	Ali Alghanim Sons Automotive Co.	1.026	0.017	1.7%	370	0.8%	0.7%	11.9	3.51	2.6%	0.48	29.5%	(0.2%)	64.58	71.18
▲	Beout Investment Group Holding Co.	0.375	0.003	0.8%	113	0.3%	0.2%	13.7	2.20	2.7%	0.48	16.1%	(5.1%)	114.76	42.60
▲	Action Energy Company K.S.C.C	0.288	0.023	8.7%	163	0.4%	0.3%	28.6	1.95	1.0%	1.92	6.8%	20.5%	429.42	119.82
▲	Trolley General Trading Company Co.	0.955	0.013	1.4%	263	0.6%	0.5%	32.7	8.05	0.0%	NA	24.6%	NA	52.24	43.43
Subtotal- Premier Market Stocks		9,435.11	53.30	0.6%	44,820	100%	84%	17.7	1.72	2.98%		9.5%	(0.7%)	10,952.73	4,364.02
Rest of the Market					8,846		16%	10.7	1.14	1.72%		6.1%		10,746.48	1,577.29

Source: Kamco Invest Research

Boursa Kuwait Daily Bulletin

Sunday, May 3, 2026

Company	Reuters Ticker	Valuation Multiples				Price (KWD)		MKT Cap (KWD Mn.)	52 Weeks High (KWD)	52 Weeks Low (KWD)	YTD-26 Return #	Daily Trading Data			YTD-26	
		Trailing P/E (X)	Trailing P/BV (X)	Dividend Yield	Beta	Closing	DTD Change					Volume (Shrs.)	Value (KWD)	Capital Turnover	ROE	
▲ Senergy Holding Co.	SENE.KW	NM	2.71	0.00%	1.08	0.127	0.001	25.4	0.143	0.050	14.4%	5,029,082	639,948	64.8%	2.4%	
= Independent Petroleum Group	IPGK.KW	11.2	0.98	6.84%	0.30	0.630	0.000	113.9	0.834	0.534	6.8%	0	0	1.2%	8.7%	
▼ National Petroleum Services Co.	NAPS.KW	10.4	2.61	5.94%	0.19	1.549	(0.001)	150.3	1.885	1.019	(3.1%)	2,486	3,782	0.1%	25.1%	
▲ The Energy House Co.	ENER.KW	27.1	4.10	0.00%	0.79	0.262	0.007	11.9	0.323	0.186	4.4%	372,463	96,654	51.5%	15.1%	
= Burgan Co. for Drilling, Tdg. & Maint. *	ABAR.KW	12.0	0.57	3.69%	0.28	0.179	0.000	45.4	0.235	0.136	(2.7%)	197,514	35,014	4.9%	4.8%	
▲ Action Energy Company K.S.C.C	ALFTAQA.KW	28.6	1.95	1.04%	1.92	0.288	0.023	163.2	0.313	0.231	20.5%	11,954,335	3,356,462	75.8%	6.8%	
Energy		12.0	2.28	4.82%				509.9			7.1%	17,555,880	4,131,860		10.0%	
▼ Kuwait Foundry Co.	KFDC.KW	13.9	1.73	1.04%	0.49	0.482	(0.012)	31.3	0.720	0.481	(24.3%)	52,694	25,730	1.7%	12.5%	
▲ Boubyan Petrochemicals Co.*	BPCC.KW	18.4	1.32	6.36%	0.73	0.626	0.012	334.8	0.709	0.545	6.6%	1,715,338	1,074,382	13.7%	7.2%	
= Al Kout for Industrial Projects Co.	ALKK.KW	14.0	2.51	4.19%	0.15	0.955	0.000	96.4	2.145	0.702	(16.2%)	0	0	0.2%	17.9%	
Basic Materials		14.0	1.73	4.19%				462.5			(1.7%)	1,768,032	1,100,112		8.8%	
▲ Specialities Group Holding Co.	SPEC.KW	16.8	1.06	1.56%	0.70	0.184	0.001	36.9	0.189	0.138	12.9%	2,213,850	410,454	14.7%	6.3%	
▲ Kuwait Cement Co.	KCEM.KW	44.0	1.30	1.54%	0.63	0.441	0.002	314.4	0.445	0.243	3.8%	163,662	72,976	3.0%	3.0%	
▲ Gulf Cable & Electrical Ind. Co.	CABL.KW	18.4	1.18	3.53%	0.98	1.964	0.032	408.9	2.280	1.708	(6.5%)	498,897	977,143	10.1%	6.4%	
▼ Heavy Eng'g Ind. & Shipbuilding Co.	SHIP.KW	15.5	1.87	3.26%	0.66	0.767	(0.005)	152.1	0.882	0.685	(1.8%)	875,824	672,317	22.5%	12.1%	
▲ Kuwait Portland Cement Co.	PCEM.KW	24.3	0.82	6.20%	0.43	0.645	0.010	64.6	0.797	0.596	1.1%	104,834	67,326	5.3%	3.4%	
▲ Shuaiba Industrial Co.	PAPE.KW	32.1	1.25	3.00%	0.27	0.230	0.002	22.8	0.427	0.159	(3.4%)	146,573	33,425	4.2%	3.9%	
▲ Metal & Recycling Co.	MRCK.KW	NM	1.78	0.00%	0.24	0.150	0.004	13.5	0.222	0.091	5.6%	633,401	94,180	61.7%	NM	
▼ ACICO Industries Co.	ACIC.KW	50.1	5.90	0.00%	0.67	0.435	(0.003)	143.7	0.528	0.054	26.1%	1,198,516	526,692	59.0%	11.8%	
▲ National Industries Co.	NIBM.KW	25.0	0.98	3.99%	0.23	0.250	0.002	89.8	0.294	0.167	16.3%	4,041	999	1.7%	3.9%	
▲ Equipment Holding Co.	EQUI.KW	NM	7.81	0.00%	1.09	0.256	0.005	20.5	0.380	0.086	(53.6%)	808,827	206,004	262.5%	NM	
▲ National Co. for Consumer Industries	NCCI.KW	NM	1.05	0.00%	0.28	0.108	0.001	32.4	0.129	0.093	(4.4%)	6,179,023	671,778	55.2%	1.3%	
▲ Agility (PWC Logistics)	AGLT.KW	NM	0.65	1.30%	1.55	0.146	0.002	372.6	0.268	0.126	3.5%	11,892,940	1,732,863	17.9%	NM	
▲ National Cleaning Co.	CLEA.KW	20.4	1.49	1.26%	0.86	0.220	0.007	54.9	0.220	0.048	81.8%	25,440,570	5,594,193	396.8%	7.3%	
▲ Kuwait Co. For Process Plant Const. & Cont.	KCPC.KW	9.7	1.16	4.46%	0.47	0.329	0.004	45.0	0.370	0.294	(7.3%)	38,529	12,507	1.9%	12.0%	
▲ Humansoft Holding Co.	HUMN.KW	9.1	2.93	11.36%	0.50	2.410	0.009	324.8	2.760	2.302	(8.2%)	43,015	103,728	10.7%	32.1%	
= Gulf Franchising Co.	GFCI.KW	6.3	4.30	0.00%	1.25	0.444	0.000	17.8	0.450	0.130	18.1%	0	0	0.6%	68.8%	
▲ Combined Group Contracting Co.	CGCK.KW	10.7	2.37	3.02%	0.70	0.989	0.029	169.2	1.150	0.574	(13.8%)	808,313	797,590	20.1%	22.1%	
▲ United Projects Group	UPAC.KW	NM	0.72	0.00%	0.27	0.198	0.009	74.8	0.345	0.132	(8.8%)	1,275,421	256,891	8.7%	NM	
▲ Mubarrad Holding Co.	MBRD.KW	13.5	0.95	4.13%	0.92	0.121	0.003	19.8	0.135	0.089	4.3%	6,714,652	811,660	34.0%	7.0%	
▼ Integrated holding Co.	INTEGRATED.KW	19.2	1.66	3.57%	0.55	0.420	(0.001)	106.3	0.625	0.377	(6.7%)	532,974	224,267	49.0%	8.6%	
▼ Umm Al-Qaiwain General Investments Co.	QIC.KW	7.3	0.75	4.56%	0.17	0.134	(0.001)	48.6	0.270	0.079	(1.5%)	2,011	260	3.5%	10.2%	
▼ Jassim Transport & Stevedoring Co.	JTC.KW	10.2	1.28	5.50%	0.07	0.509	(0.001)	76.4	0.539	0.364	14.4%	48,841	24,883	11.4%	12.5%	
Industrials		16.8	1.26	3.55%				2,609.8			0.1%	59,624,714	13,292,133		NM	

Boursa Kuwait Daily Bulletin

Sunday, May 3, 2026

Company	Reuters Ticker	Valuation Multiples				Price (KWD)		MKT Cap (KWD Mn.)	52 Weeks High (KWD)	52 Weeks Low (KWD)	YTD-26 Return #	Daily Trading Data			YTD-26 Capital Turnover	ROE
		Trailing P/E (X)	Trailing P/BV (X)	Dividend Yield	Beta	Closing	DTD Change					Volume (Shrs.)	Value (KWD)	YTD-26 ROE		
▼ Livestock Transport & Trading Co.	CATT.KW	NM	1.20	0.00%	0.28	0.094	(0.001)	19.7	0.155	0.082	(13.7%)	136,056	12,848	11.1%	NM	
▲ Mezzan Holding Co.	MEZZ.KW	23.1	3.12	3.48%	0.50	1.290	0.012	400.9	1.800	0.908	3.2%	477,000	606,382	9.0%	13.5%	
Consumer Staples		23.1	2.16	3.48%				420.6			2.3%	613,056	619,229		5.9%	
▲ Advanced Technology Co.	ATCK.KW	NM	1.95	0.00%	NA	0.575	0.021	103.5	0.935	0.426	(11.9%)	27,651	14,723	0.2%	NM	
= Al-Maidan Clinic For Oral Health Services Co.	MIDAN.KW	25.2	1.87	1.82%	0.06	0.825	0.000	167.1	0.910	0.548	0.7%	0	0	0.0%	7.4%	
Health Care		25.2	1.91	1.82%				270.6			(4.5%)	27,651	14,723		NM	
▼ Kuwait National Cinema Co.	KCIN.KW	7.0	1.16	5.47%	0.28	1.330	(0.031)	123.2	1.639	1.005	(11.3%)	102	136	0.5%	16.6%	
▲ Kuwait Hotels Co.	KHOT.KW	12.4	1.65	0.00%	NA	0.201	0.018	12.5	0.291	0.165	(22.7%)	311,914	61,928	7.6%	13.2%	
▲ IFA Hotels & Resorts Co.*	IFAH.KW	14.1	5.13	0.00%	0.79	0.904	0.019	263.2	1.590	0.768	(13.7%)	2,496,117	2,250,128	28.4%	36.3%	
▲ Oula Fuel Marketing Co.	OULA.KW	17.6	1.43	2.91%	0.63	0.275	0.004	122.4	0.481	0.240	(3.5%)	3,303,090	902,425	26.9%	8.1%	
= Kuwait Resorts Co.	MUNK.KW	28.6	0.84	2.21%	0.75	0.148	0.000	32.0	0.158	0.105	11.3%	1,137,597	170,173	4.9%	2.9%	
= Jazeera Airways Co.	JAZK.KW	16.8	7.69	5.12%	0.77	1.660	0.000	365.2	1.905	1.111	2.1%	448,312	751,094	12.0%	45.8%	
▲ Soor Fuel Marketing Co.	SOOR.KW	23.6	1.25	2.37%	0.51	0.295	0.015	124.1	0.346	0.240	7.7%	222,980	64,401	1.4%	5.3%	
▲ Future Kid Entertainment and R.E Co.	KIDK.KW	NM	0.99	0.00%	0.28	0.110	0.001	13.2	0.147	0.092	(6.0%)	1,803,631	198,129	38.5%	NM	
= Palms Agro Production Co.	PAPK.KW	12.7	1.89	0.00%	0.38	0.235	0.000	12.3	0.555	0.179	(7.1%)	244,021	57,789	26.6%	15.0%	
▲ Ali Alghanim Sons Automotive Co.	ALG.KW	11.9	3.51	2.59%	0.48	1.026	0.017	370.1	1.082	0.918	(0.2%)	701,001	709,555	17.9%	29.5%	
▲ Trolley General Trading Company Co.	TROLLEY.KW	32.7	8.05	0.00%	NA	0.955	0.013	262.6	0.999	0.711	30.6%	1,060,583	1,012,744	NA	24.6%	
Consumer Discretionary		15.5	1.65	2.75%				1,701			(0.1%)	11,729,348	6,178,502		18.9%	
▲ Zain	ZAIN.KW	10.4	2.05	0.00%	1.19	0.575	0.005	2,488.1	0.588	0.453	10.8%	1,029,564	590,583	7.3%	19.6%	
▼ National Mobile Telecom Co.	OORE.KW	12.0	1.49	8.11%	0.59	1.840	(0.002)	922.1	1.849	1.055	30.1%	29,737	54,297	1.4%	12.4%	
▼ Kuwait Telecommunication Co.	STC.KW	18.7	2.67	5.94%	0.64	0.640	(0.008)	639.2	0.769	0.529	(7.2%)	1,821,052	1,168,882	6.2%	14.2%	
▲ Digitus Group for Digital Infrastructure, Data C	DIGITUS.KW	NM	42.69	0.00%	0.92	1.780	0.030	191.2	1.790	0.079	67.3%	258,347	458,114	18.3%	NM	
Telecommunications		12.0	2.36	7.02%				4,240.5			13.1%	3,138,700	2,271,876		16.8%	
▲ National Bank of Kuwait	NBKK.KW	14.0	1.76	4.00%	1.22	0.875	0.015	8,032.4	1.063	0.854	(9.5%)	2,862,244	2,489,741	6.1%	12.6%	
▲ Gulf Bank	GBKK.KW	27.3	1.67	2.64%	1.05	0.341	0.002	1,429.6	0.362	0.304	0.3%	2,405,755	822,699	13.1%	6.1%	
▼ Commercial Bank of Kuwait	CBKK.KW	8.8	1.35	4.93%	0.37	0.484	(0.002)	1,060.6	0.700	0.451	(5.8%)	178,576	86,500	0.5%	15.4%	
▲ Ahli Bank of Kuwait	ABKK.KW	12.3	1.13	3.54%	0.66	0.281	0.002	772.4	0.301	0.264	0.4%	1,089,762	305,789	7.7%	9.2%	
= Kuwait International Bank	KIBK.KW	17.0	1.33	2.76%	1.00	0.272	0.000	510.8	0.282	0.213	4.2%	5,586,329	1,517,491	31.9%	7.9%	
▲ Burgan Bank	BURG.KW	16.6	0.89	2.95%	1.09	0.203	0.002	772.6	0.275	0.188	(2.7%)	1,592,690	322,411	7.5%	5.3%	
▼ Kuwait Finance House	KFH.KW	24.7	2.71	3.02%	1.33	0.789	(0.001)	15,598.9	0.807	0.666	4.1%	5,470,669	4,318,127	4.8%	11.0%	
▼ Boubyan Bank	BOUK.KW	31.8	3.31	1.03%	1.03	0.677	(0.002)	3,195.2	0.697	0.606	1.3%	980,907	664,603	3.1%	10.4%	
▲ Warba Bank	WARB.KW	27.9	1.67	1.71%	1.00	0.293	0.002	1,383.9	0.306	0.209	0.0%	4,906,272	1,435,832	14.2%	6.0%	
Banks		17.0	1.67	2.95%				32,756.3			(0.6%)	25,073,204	11,963,193		10.7%	

Boursa Kuwait Daily Bulletin

Sunday, May 3, 2026

Company	Reuters Ticker	Valuation Multiples				Price (KWD)		MKT Cap (KWD Mn.)	52 Weeks High (KWD)	52 Weeks Low (KWD)	YTD-26 Return #	Daily Trading Data			YTD-26 Capital Turnover	ROE
		Trailing P/E (X)	Trailing P/BV (X)	Dividend Yield	Beta	Closing	DTD Change					Volume (Shrs.)	Value (KWD)	YTD-26 ROE		
= Kuwait Insurance Co.	KINS.KW	15.5	0.82	5.07%	0.09	0.750	0.000	138.6	0.750	0.490	18.1%	18,040	13,529	1.6%	5.3%	
▼ Gulf Insurance Group	GINS.KW	8.7	0.82	0.00%	0.10	0.761	(0.039)	215.9	1.122	0.710	(8.3%)	1,064	810	0.0%	9.3%	
▼ Ahleiah Insurance Co.	AINS.KW	6.9	0.98	4.23%	0.15	0.699	(0.011)	174.7	0.885	0.609	(9.7%)	27,134	19,166	1.6%	14.1%	
▼ Warba Insurance and Reinsurance Co.	WINSRE.KW	10.7	0.90	7.30%	0.41	0.199	(0.001)	48.7	0.213	0.133	13.7%	1,971,300	392,987	21.1%	8.3%	
▲ Kuwait Reinsurance Co.	KWRE.KW	5.9	1.08	2.91%	0.10	0.342	0.003	117.0	0.475	0.277	(8.7%)	14,240	4,870	0.3%	18.3%	
▲ First Takaful Insurance Co.	FTIK.KW	NM	3.25	0.00%	0.47	0.187	0.003	31.2	0.219	0.123	(16.9%)	578,042	109,151	16.2%	0.0%	
▲ Wethaq Takaful Insurance Co.	WETH.KW	15.2	2.35	0.00%	0.59	0.116	0.005	12.8	0.179	0.033	8.4%	4,768,766	555,136	86.7%	15.4%	
= Bahrain Kuwait Insurance Co.	BKIK.KW	7.4	0.75	10.43%	0.01	0.191	0.000	28.5	0.191	0.191	0.00%	0	0	0.0%	10.2%	
Insurance		8.7	0.94	5.07%				767.4			(2.6%)	7,378,586	1,095,648		10.6%	
▲ Sokouk Holding Co.	SHCK.KW	6.1	1.13	0.00%	1.14	0.083	0.003	47.4	0.093	0.050	3.8%	6,793,006	555,527	14.6%	18.5%	
▲ Kuwait Real Estate Co.	KREK.KW	2.5	0.20	0.00%	0.96	0.355	0.007	37.8	0.449	0.304	(7.6%)	10,502,824	3,719,249	296.7%	7.8%	
▼ United Real Estate Co.	UREK.KW	61.3	1.85	0.00%	0.59	0.262	(0.006)	374.8	0.312	0.145	(1.1%)	999,030	262,788	11.9%	3.0%	
▼ National Real Estate Co.	NREK.KW	NM	0.67	0.00%	1.23	0.101	(0.001)	220.0	0.107	0.063	39.9%	11,019,349	1,115,181	25.5%	NM	
▲ Salhia Real Estate Co.	SREK.KW	40.4	1.36	3.65%	0.37	0.396	0.001	246.8	0.435	0.360	1.3%	1,703,020	678,407	19.9%	3.4%	
▼ Tamdeen Real Estate Co.	TAMK.KW	8.2	0.58	4.00%	0.20	0.416	(0.010)	167.0	0.480	0.323	(8.4%)	14,791	6,205	0.5%	7.1%	
▼ Ajjal Real Estate Entertainment Co.	AREC.KW	10.2	0.45	6.50%	0.43	0.306	(0.010)	64.0	0.335	0.233	(2.9%)	52,129	16,003	0.9%	4.4%	
▲ Arab Real Estate Co.	ARAB.KW	NM	1.82	0.00%	1.18	0.208	0.008	80.3	0.315	0.077	(5.0%)	9,616,798	1,966,648	68.9%	NM	
▲ AL-Enma'a Real Estate Co.*	ENMA.KW	11.5	0.98	4.76%	0.69	0.105	0.007	36.8	0.100	0.070	20.1%	17,900,656	1,828,173	30.9%	8.5%	
▼ Mabanee Co.	MABK.KW	18.6	2.14	2.00%	1.01	1.002	(0.003)	1,570.7	1.118	0.735	(2.6%)	706,221	709,150	7.9%	11.5%	
▼ Injazzat Real Estate Development Co.	INJA.KW	22.1	0.95	3.41%	0.33	0.172	(0.006)	58.2	0.235	0.093	4.2%	71,985	12,568	3.5%	4.3%	
▲ The Commercial Real Estate Co.	TIJK.KW	22.4	1.22	1.48%	0.67	0.193	0.001	365.9	0.233	0.163	(4.9%)	1,246,602	241,376	26.3%	5.4%	
▲ Sanam Real Estate Co.	SANK.KW	32.3	2.69	0.00%	0.50	0.296	0.004	65.3	0.292	0.138	42.3%	4,541,306	1,344,188	105.1%	8.3%	
▲ A'ayan Real Estate Co.	AYRE.KW	21.4	1.12	3.43%	0.70	0.175	0.009	72.7	0.176	0.088	31.6%	2,656,050	462,340	44.0%	5.2%	
▲ Aqar Real Estate Investment Co.	AQAR.KW	13.6	0.74	2.92%	0.09	0.102	0.003	23.8	0.114	0.068	7.5%	989,285	99,798	13.4%	5.5%	
▲ Kuwait Real Estate Holding Co.	ALAQ.KW	6.3	3.08	0.00%	0.42	0.061	0.001	11.4	0.086	0.030	(1.9%)	699,503	42,708	33.0%	48.7%	
▲ MAZAYA Holding Co.	MAZA.KW	25.2	0.95	0.00%	1.06	0.081	0.003	43.6	0.094	0.056	9.8%	6,748,624	543,252	12.1%	3.8%	
▲ Tijara Real Estate & Investment Co.	TIJA.KW	21.5	1.14	3.79%	0.57	0.132	0.012	48.8	0.120	0.059	35.5%	13,145,938	1,672,433	31.2%	5.3%	
= Arkan Al-Kuwait Real Estate Co. *	ARKK.KW	34.0	1.97	3.61%	0.26	0.305	0.000	95.0	0.382	0.094	0.3%	516,359	158,054	40.9%	5.8%	
▲ Al-Argan International Real Estate Co.	ARGK.KW	NM	0.50	0.00%	0.49	0.126	0.003	36.7	0.187	0.078	13.5%	16,258,097	2,065,587	116.7%	NM	
▲ Munshaat Real Estate Projects Co.	MUNS.KW	5.7	1.68	2.30%	0.70	0.217	0.009	69.9	0.256	0.159	(11.4%)	152,891	32,960	2.7%	29.3%	
▲ Kuwait Business Town Real Estate Co.	KBTK.KW	28.6	1.15	0.00%	1.15	0.099	0.003	59.2	0.155	0.072	2.4%	7,309,942	722,022	58.0%	4.0%	
▲ MENA Real Estate Co. *	MENK.KW	NM	1.25	0.00%	0.88	0.117	0.002	22.2	0.139	0.094	0.0%	4,618,297	539,438	97.0%	NM	
▲ Real Estate Trade Centers Co.	MARA.KW	10.8	1.49	0.00%	0.56	0.216	0.005	30.0	2.660	0.136	(48.9%)	1,235,786	264,892	249.5%	13.7%	
▲ Mashaer Holding Co.	MASHAER.KW	13.0	1.20	4.02%	0.58	0.122	0.004	19.6	0.132	0.074	11.9%	3,097,457	376,033	24.0%	9.2%	
= Al Masaken Intl. Real Estate Dev. Co.	MASKN.KW	NM	-3.89	0.00%	0.39	0.055	0.000	5.4	0.074	0.041	0.0%	0	0	0.0%	NM	
= Dalqan Real Estate Co.	DALQ.KW	2.8	0.92	0.00%	0.12	0.104	0.000	6.9	0.338	0.084	(40.9%)	0	0	161.4%	32.7%	
▼ Dar Al Thuraya Real Estate Co.	THURY.KW	NM	3.02	0.00%	0.02	0.416	(0.032)	60.9	0.452	0.090	120.1%	851,020	364,196	26.3%	1.3%	
▲ Osos Holding Group Co.	OSOS.KW	8.8	1.27	0.00%	0.37	0.217	0.001	23.7	0.249	0.120	16.7%	1,663,436	362,406	30.3%	14.4%	
▼ KFH Capital REIT	BAITAKREIT.KW	NA	NA	0.10%	0.08	1.202	(0.006)	28.4	1.311	1.120	(3.1%)	40,480	48,759	15.6%	NA	
Real Estate		13.6	1.17	3.52%				3,993.2			0.2%	125,150,882	20,210,341		4.1%	

Boursa Kuwait Daily Bulletin

Sunday, May 3, 2026

Company	Reuters Ticker	Valuation Multiples				Price (KWD)		MKT Cap (KWD Mn.)	52 Weeks High (KWD)	52 Weeks Low (KWD)	YTD-26 Return #	Daily Trading Data			YTD-26 Capital Turnover	ROE
		Trailing P/E (X)	Trailing P/BV (X)	Dividend Yield	Beta	Closing	DTD Change					Volume (Shrs.)	Value (KWD)	YTD-26 ROE		
▲ Kuwait Investment Co.	KINV.KW	5.5	0.77	9.08%	0.98	0.197	0.002	108.6	0.256	0.157	(15.5%)	193,787	38,335	24.6%	14.0%	
▼ Commercial Facilities Co.	FACI.KW	9.9	0.93	6.45%	0.50	0.307	(0.001)	155.9	0.308	0.230	6.2%	30,937	9,520	1.6%	9.3%	
▲ Int'l Financial Advisors Co.	IFIN.KW	19.6	1.76	0.00%	1.24	0.416	0.005	225.7	0.516	0.345	(10.7%)	2,779,112	1,151,565	46.1%	9.0%	
▲ National Investment Co.	NINV.KW	8.7	0.87	9.53%	1.32	0.262	0.001	208.8	0.346	0.220	(13.2%)	823,717	215,927	11.3%	10.0%	
▲ Kuwait Projects Co.(Holding)	KPRO.KW	26.2	0.66	0.00%	0.82	0.086	0.001	428.2	0.097	0.075	7.7%	8,351,945	716,977	9.2%	2.5%	
▲ Coast Invest. & Development Co.	COAS.KW	61.0	0.64	0.00%	1.24	0.070	0.001	32.3	0.084	0.055	2.1%	873,561	61,122	22.0%	1.1%	
▲ The Securities House Co.	SECH.KW	NM	0.85	0.00%	1.21	0.086	0.004	34.4	0.097	0.060	6.3%	8,779,333	741,333	38.5%	NM	
▲ Arzan Financial Group For Fin. & Invest.	ARZA.KW	14.3	1.48	0.53%	1.04	0.366	0.003	332.1	0.400	0.238	(1.6%)	429,825	157,105	27.3%	10.4%	
▲ Kuwait Financial Centre	MARKZ.KW	6.9	0.65	5.41%	0.81	0.147	0.004	74.2	0.179	0.126	(7.0%)	719,016	104,298	5.8%	9.5%	
▲ Kuwait & M.E. Financial Inv. Co.	KMEF.KW	14.8	1.49	0.00%	0.58	0.178	0.004	39.2	0.192	0.132	14.8%	2,051,927	362,217	48.3%	10.1%	
▲ First Investment Co.	OLAK.KW	5.5	1.33	0.00%	1.18	0.130	0.006	58.0	0.168	0.031	4.8%	14,403,631	1,832,785	179.3%	24.1%	
▼ Gulf Investment House	GIHK.KW	NM	3.66	0.00%	0.93	0.448	(0.025)	182.1	0.709	0.401	(17.6%)	151,302	68,083	1.3%	1.9%	
▲ A'ayan Leasing & Investment Co.	AAYA.KW	8.9	1.47	2.85%	1.28	0.263	0.009	174.6	0.270	0.155	14.3%	7,303,393	1,922,892	87.9%	16.4%	
▲ Bayan Investment Co.	BAYK.KW	18.0	1.53	0.00%	0.75	0.091	0.005	21.5	0.101	0.047	19.7%	13,787,798	1,234,460	71.8%	8.5%	
▲ Osoul Investment Co.	OSUL.KW	46.3	3.23	0.00%	0.49	0.360	0.024	45.6	0.384	0.139	44.0%	3,201,332	1,141,467	51.5%	7.0%	
▲ Kuwait Finance & Investment Co.	KFSK.KW	9.1	1.21	0.00%	0.34	0.148	0.001	36.3	0.225	0.118	1.4%	283,551	40,483	5.5%	13.4%	
▲ Kamco Investment Co.	KAMC.KW	7.7	1.01	4.85%	0.66	0.206	0.004	70.5	0.232	0.107	(2.4%)	2,141,452	437,909	31.7%	13.2%	
▼ National International Holding Co.	NIHK.KW	22.6	0.97	1.09%	0.82	0.173	(0.003)	43.0	0.183	0.102	22.7%	16,455,322	2,900,357	99.2%	4.3%	
▲ UniCap Investment and Finance	UNICAP.KW	NM	3.86	0.00%	0.72	0.308	0.017	68.9	0.403	0.237	1.0%	732,546	221,200	13.5%	2.2%	
▲ Al Madar Finance & Investment Co.	MADR.KW	NM	1.24	0.00%	0.37	0.133	0.001	27.5	0.185	0.090	14.7%	3,018,172	404,500	58.8%	0.3%	
▲ Al-Deera Holding	DEER.KW	10.7	1.28	0.00%	0.89	0.510	0.007	52.7	0.872	0.302	(13.6%)	2,602,394	1,326,257	156.2%	12.0%	
▼ Al-Safat Investment Co.	ALSAFAT.KW	13.9	2.18	2.00%	1.97	0.245	(0.004)	77.8	0.312	0.120	(8.2%)	448,959	109,610	16.2%	15.7%	
▲ Ektitab Holding Co.	EKTT.KW	NM	10.14	0.00%	1.04	0.036	0.000	11.5	0.050	0.012	(3.2%)	14,503,546	531,139	213.6%	NM	
▼ NOOR Financial Investment Co.	NOOR.KW	6.2	1.24	3.54%	1.22	0.419	(0.001)	213.8	0.504	0.264	(4.8%)	1,747,552	730,887	17.7%	19.9%	
= Tamdeen Investment Co.	TAMI.KW	16.2	0.72	3.62%	0.33	1.340	0.000	268.0	1.525	0.657	(4.3%)	0	0	0.0%	4.5%	
▲ Kuwait Emirates Holding Co.	EMIRATES.KW	NM	1.68	0.00%	0.52	0.131	0.002	23.1	0.500	0.052	(8.4%)	62,513	8,112	18.2%	1.4%	
▲ Asiya Capital Investment Co.	ASIYA.KW	NM	0.62	0.00%	0.70	0.043	0.001	35.0	0.062	0.034	(8.3%)	7,984,727	341,607	31.4%	NM	
▼ Rasiyat Holding Co.	RASIYAT.KW	28.8	4.61	0.00%	NA	0.471	(0.007)	70.7	0.491	0.333	18.0%	1,091,198	517,502	63.2%	16.0%	
▲ Alimtiazi Investment Group	ALIMK.KW	NM	0.87	0.00%	1.05	0.064	0.008	72.6	0.080	0.030	8.1%	62,182,161	3,812,376	38.3%	NM	
▲ Manazel Holding Co.	MANK.KW	NM	1.53	0.00%	1.36	0.052	0.004	22.5	0.074	0.030	(13.1%)	23,741,709	1,220,615	67.9%	NM	
▲ National Industries Group	NIND.KW	9.0	1.10	1.92%	1.42	0.260	0.001	657.9	0.310	0.219	(13.0%)	5,232,788	1,364,730	18.4%	12.2%	
▲ Warba Capital Holding Co.	WARBACAP.KW	NM	5.56	0.00%	0.57	0.574	0.004	17.2	0.967	0.225	(20.9%)	27,860	16,119	33.6%	6.5%	
▲ Privatization Holding Co.	KPPC.KW	NM	1.28	0.00%	0.84	0.074	0.003	45.3	0.102	0.046	(2.2%)	4,933,604	362,548	21.9%	NM	
▲ Credit Rating & Collection Co.	TAHS.KW	NM	5.20	0.00%	0.25	0.160	0.003	26.4	0.485	0.040	1.3%	726,393	118,730	8.9%	0.9%	
▼ Valmore Holding	VALMORE.KW	6.0	1.69	6.56%	0.21	0.209	(0.001)	247.3	0.250	0.180	(8.7%)	237,282	49,390	1.9%	28.1%	
▲ GFH Financial Group	GFH.KW	17.8	2.45	3.74%	0.96	0.200	0.005	766.5	0.198	0.088	5.8%	58,882,545	11,674,719	37.0%	13.7%	
▲ Inovent	INOV.KW	NM	0.88	0.00%	0.92	0.103	0.003	31.6	0.135	0.083	0.0%	24,329,463	2,509,006	199.7%	NM	
▲ Amar For Finance and Leasing Co.	AMARF.KW	25.3	0.96	0.00%	0.11	0.111	0.002	21.7	0.126	0.063	8.8%	3,888,427	432,807	26.0%	3.8%	
▲ Al-Manar Financing & Leasing Co.	ALMANAR.KW	11.5	0.95	3.39%	0.60	0.118	0.001	31.1	0.133	0.061	11.3%	2,695,517	319,877	21.1%	8.3%	
▲ Boursa Kuwait Securities Co	BOURSA.KW	20.2	7.18	4.48%	0.94	2.836	0.016	569.4	4.304	2.627	(23.4%)	338,512	960,458	14.2%	35.6%	
▲ Beyout Investment Group Holding Co.	BEYOUT.KW	13.7	2.20	2.67%	0.73	0.375	0.003	112.5	0.459	0.338	(5.1%)	1,947,688	730,571	38.3%	16.1%	
Financial Services		13.8	1.28	3.62%				5,742.0			(5.3%)	304,116,497	40,899,593		7.5%	

Boursa Kuwait Daily Bulletin

Sunday, May 3, 2026

Company	Reuters Ticker	Valuation Multiples				Price (KWD)		MKT Cap (KWD Mn.)	52 Weeks High (KWD)	52 Weeks Low (KWD)	YTD-26 Return #	Daily Trading Data		YTD-26 Capital Turnover	ROE
		Trailing P/E (X)	Trailing P/BV (X)	Dividend Yield	Beta	Closing	DTD Change					Volume (Shrs.)	Value (KWD)		
▲ Automated Systems Co.	ASCK.KW	NM	2.47	0.00%	0.35	0.277	0.001	27.7	0.282	0.098	111.5%	3,668,927	1,006,024	120.0%	NM
Technology		NM	2.47	0.00%				27.7			111.5%	3,668,927	1,006,024		NM
▲ Shamal Az-Zour Al-Oula Power and Water Co.	AZNOULA.KW	10.9	1.21	4.70%	0.60	0.149	0.001	163.9	0.174	0.136	0.0%	970,034	144,694	7.5%	11.1%
Utilities		10.9	1.21	4.70%				163.9			0.0%	970,034	144,694		11.1%

Boursa Kuwait	14.00	1.29	2.2%					53,665.3			0.01%	560,815,511	102,927,929		8.7%
----------------------	--------------	-------------	-------------	--	--	--	--	-----------------	--	--	--------------	--------------------	--------------------	--	-------------

Year-to-Date 2026 Top Movers & Most Active Stocks

YTD Top % Gainers	Close (KWD)	Percent Change
Dar Al Thuraya Real Estate Co.	0.416	120.1%
Automated Systems Co.	0.277	111.5%
National Cleaning Co.	0.220	81.8%
Digitus Group for Digital Infrastructure, Data Centers & Con	1.780	67.3%
Osoul Investment Co.	0.360	44.0%

YTD Most Active by Volume	Close (KWD)	Volume (Shrs.)
GFH Financial Group	0.200	1,417,718,290
National Cleaning Co.	0.220	990,994,388
Kuwait Finance House	0.789	956,578,022
First Investment Co.	0.130	799,705,062
Ekttitab Holding Co.	0.036	680,702,395

YTD Top % Losers	Close (KWD)	Percent Change
Equipment Holding Co.	0.256	(53.6%)
Real Estate Trade Centers Co.	0.216	(48.9%)
Dalqan Real Estate Co.	0.104	(40.9%)
Kuwait Foundry Co.	0.482	(24.3%)
Boursa Kuwait Securities Co.	2.836	(23.4%)

YTD Most Active by Value	Close (KWD)	Value (KWD)
Kuwait Finance House	0.789	774,674,281
National Bank of Kuwait	0.875	526,251,077
GFH Financial Group	0.200	255,258,105
Warba Bank	0.293	198,274,117
Gulf Bank	0.341	186,578,058

* Different Fiscal Year Company

Disclaimer & Important Disclosures

Kamco Invest is authorized and fully regulated by the Capital Markets Authority ("CMA, Kuwait") and partially regulated by the Central Bank of Kuwait ("CBK").

This document is provided for informational purposes only. Nothing contained in this document constitutes investment, an offer to invest, legal, tax or other advice or guidance and should be disregarded when considering or making investment decisions. In preparing this document, Kamco Invest did not take into account the investment objectives, financial situation and particular needs of any particular person. Accordingly, before acting on this document, investors should independently evaluate the investments and strategies referred to herein and make their own determination of whether it is appropriate in light of their own financial circumstances and objectives. The entire content of this document is subject to copyright with all rights reserved. This research and the information contained herein may not be reproduced, distributed or transmitted in Kuwait or in any other jurisdiction to any other person or incorporated in any way into another document or other material without our prior written consent.

Analyst Certification

Each of the analysts identified in this report, if any and where applicable, certifies, with respect to the sector, companies or securities that the individual analyses, that (1) the views expressed in this report reflect his or her personal views about all of the subject companies and securities and (2) no part of his or her compensation was, is or will be directly or indirectly dependent on the specific recommendations or views expressed in this report.

Kamco Invest Ratings

Kamco Invest research is based on the analysis of regional and country economics, industries and company fundamentals. Kamco Invest company research reflects a long-term (12-month) target price for a company or stock.

The ratings bands are:

* **Outperform:** Target Price represents expected returns $\geq 10\%$ in the next 12 months

* **Neutral:** Target Price represents expected returns between -10% and $+10\%$ in the next 12 months

* **Underperform:** Target Price represents expected return of $< -10\%$ in the next 12 months

In certain circumstances, ratings may differ from those implied by a fair value target using the criteria above. Kamco Invest policy is to maintain up-to-date fair value targets on the companies under its coverage, reflecting any material changes to the analyst's outlook on a company. Share price volatility may cause a stock to move outside the rating range implied by Kamco Invest's fair value target. Analysts may not necessarily change their ratings if this happens, but are expected to disclose the rationale behind their view to Kamco Invest clients.

Any terms and conditions proposed by you which are in addition to or which conflict with this Disclaimer are expressly rejected by Kamco Invest and shall be of no force or effect. The information contained in this document is based on current trade, statistical and other public information we consider reliable. We do not represent or warrant that such information is fair, accurate or complete and it should not be relied upon as such. Kamco Invest has no obligation to update, modify or amend this document or to otherwise notify a recipient thereof in the event that any opinion, forecast or estimate set forth herein, changes or subsequently becomes inaccurate. The publication is provided for informational purposes only and is not intended for trading purposes. The information on publications does not give rise to any legally binding obligation and/or agreement, including without limitation any obligation to update such information. You shall be responsible for conducting your own investigation and analysis of the information contained or referred to in this document and of evaluating the merits and risks involved in the securities forming the subject matter of this or other such document. Moreover, the provision of certain data/information in the publication may be subject to the terms and conditions of other agreements to which Kamco Invest is a party.

Nothing in this document should be construed as a solicitation or offer, or recommendation, to acquire or dispose of any investment or to engage in any other transaction, or to provide any investment advice or service. This document is directed at Professional Clients and not Retail Clients within the meaning of CMA rules. Any other persons in receipt of this document must not rely upon or otherwise act upon it. Entities and individuals into whose possession this document comes are required to inform themselves about, and observe such restrictions and should not rely upon or otherwise act upon this document where it is unlawful to make to such person such an offer.

*Kamco Investment Company (DIFC) Limited ("Kamco Invest DIFC"), Office 205, Level 2, Gate Village 1, Dubai International Financial Centre, a wholly owned subsidiary of Kamco Investment Company KSC (Public), is regulated by the Dubai Financial Services Authority (DFSA). Kamco Invest DIFC may only undertake the financial services activities that fall within the scope of its existing DFSA licence. The information in this document may be distributed by Kamco Invest DIFC on behalf of Kamco Investment Company KSC (Public). This document is intended for Professional Clients or Market Counterparties only as defined by the DFSA, and no other person should act upon it. This document may not be distributed in Saudi Arabia except to such persons as are permitted under the Offers of Securities Regulations issued by the Capital Market Authority. The Capital Market Authority does not make any representation as to the accuracy or completeness of this document, and expressly disclaims any liability whatsoever for any loss arising from, or incurred in reliance upon, any part of this document. The recipients of this document hereby should conduct their own due diligence on the accuracy of the information relating to the contents of this document. If you do not understand the contents of this document you should consult an authorized financial advisor.

Risk Warnings

Any prices, valuations or forecasts are indicative and are not intended to predict actual results, which may differ substantially from those reflected. The value of an investment may go up as well as down. The value of and income from any investment may fluctuate from day to day as a result of changes in relevant economic markets (including, without limitation, foreseeable or unforeseeable changes in interest rates, foreign exchange rates, default rates, prepayment rates, political or financial conditions, etc.).

Past performance is not indicative of future results. Any opinions, estimates, valuations or projections (target prices and ratings in particular) are inherently imprecise and a matter of judgment. They are statements of opinion and not of fact, based on current expectations, estimates and projections, and rely on beliefs and assumptions. Actual outcomes and returns may differ materially from what is expressed or forecasted. There are no guarantees of future performance. Certain transactions, including those involving futures, options, and other derivatives, give rise to substantial risk and are not suitable for all investors. This document does not propose to identify or to suggest all of the risks (direct or indirect) which may be associated with the investments and strategies referred to herein.

Conflict of Interest

Kamco Invest and its affiliates provide full investment banking services, and they and their directors, officers and employees, may take positions which conflict with the views expressed in this document. Salespeople, traders, and other professionals of Kamco Invest may provide oral or written market commentary or trading strategies to their clients and our proprietary trading desks that are contrary to the opinions expressed in this document. Our asset management area, our proprietary trading desks and investing businesses may make investment decisions that are inconsistent with the recommendations or views expressed in this document. Kamco Invest may have or seek investment banking or other business relationships for which it will receive compensation from the companies that are the subject of this document. Facts and views presented in this document have not been reviewed by, and may not reflect information known to, professionals in other Kamco Invest business areas, including investment banking personnel. United Gulf Bank, Bahrain owns majority of Kamco Invest's shareholding and this ownership may create, or may create the appearance of, conflicts of interest.

No Liability & Warranty

Kamco Invest makes neither implied nor expressed representations or warranties and, to the fullest extent permitted by applicable law, we hereby expressly disclaim any and all express, implied and statutory representations and warranties of any kind, including, without limitation, any warranty as to accuracy, timeliness, completeness, and fitness for a particular purpose and/or non-infringement. Kamco Invest will accept no liability in any event including (without limitation) your reliance on the information contained in this document, any negligence for any damages or loss of any kind, including (without limitation) direct, indirect, incidental, special or consequential damages, expenses or losses arising out of, or in connection with your use or inability to use this document, or in connection with any error, omission, defect, computer virus or system failure, or loss of any profit, goodwill or reputation, even if expressly advised of the possibility of such loss or damages, arising out of or in connection with your use of this document. We do not exclude our duties or liabilities under binding applicable law.