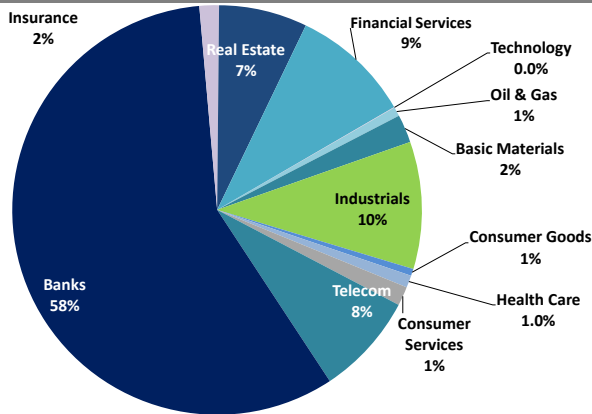


Boursa Kuwait Daily Report

November 29, 2021

Sector Weight by Market Cap



Top 10 Companies by Market Capitalization

Company Name	Market Cap. (Mn KWD)	P/E (X)	ROE* (%)
1- National Bank of Kuwait	7,178.3	21.6	9.7%
2- Kuwait Finance House	6,913.6	32.1	11.2%
3- Ahli United Bank - Bahrain	2,807.3	19.0	11.3%
4- Zain	2,535.7	13.4	15.9%
5- Boubayan Bank	2,486.5	57.7	7.8%
6- Agility (PWC Logistics)	2,132.0	2.2	48.0%
7- Commercial Bank of Kuwait	996.0	42.0	3.0%
8- Mabanee Co.	912.5	17.3	10.3%
9- Gulf Bank	752.9	19.8	5.8%
10- Ahli United Bank - Kuwait	745.7	22.1	7.2%
Total	27,460	13.31	16.0%

*: ROE is calculated based on TTM 9M-2021 net profit & shareholders' equity as of 30-September-21

Top Movers and Most Active Stocks

Today's Top % Gainers	Close (KWD)	Change (KWD)	Percent Change
Sanam Real Estate Co.	0.090	0.013	17.1%
Mashaer Holding Co.	0.076	0.006	8.7%
Al TAMEER Real Estate Investment Co.	0.044	0.003	7.6%
Al Massaleh Real Estate Co.	0.053	0.003	6.7%
Al Masaken Intl. Real Estate Dev. Co.	0.048	0.003	6.5%




Today's Top % Losers	Close (KWD)	Change (KWD)	Percent Change
MENA Real Estate Co.	0.050	(0.007)	(12.2%)
Jazeera Airways Co.	1.000	(0.120)	(10.7%)
Al-Deera Holding	0.166	(0.019)	(10.3%)
Equipment Holding Co.	0.053	(0.005)	(8.6%)
Gulf Franchising Co.	0.077	(0.007)	(8.3%)

Today's Most Active by Volume	Close (KWD)	Percent Change	Volume (Shares)
GFH Financial Group	0.086	0.6%	49,792,053
MENA Real Estate Co.	0.050	(12.2%)	29,873,128
Kuwait International Bank	0.211	0.0%	12,091,372
National Real Estate Co.	0.213	0.9%	11,228,554
National Investment Co.	0.225	3.7%	10,875,957

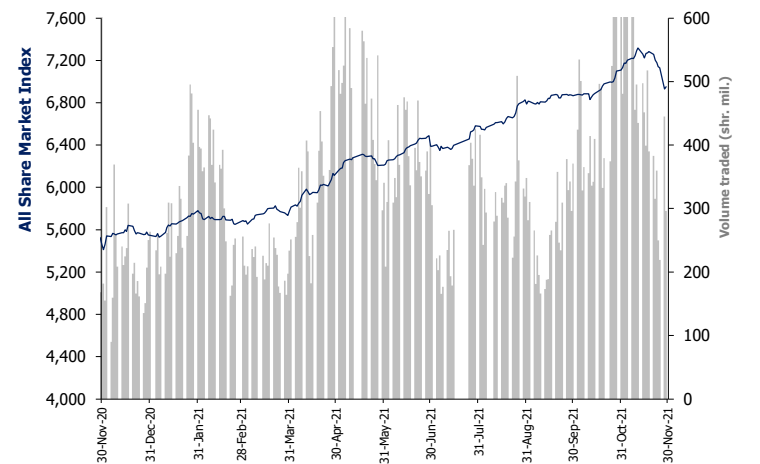
Source: Boursa Kuwait, Kamco Invest Research

Market Capitalization - Sector Returns

	Market Cap. (KWD Mn)	DTD ▲	DTD % Chg	MTD % Chg	YTD % Chg
Boursa Kuwait	41,336.2	▲	0.3%	(1.8%)	25.3%
Oil & Gas	292.7	▲	0.8%	(3.6%)	4.4%
Basic Materials	918.8	▼	(0.6%)	(6.3%)	14.7%
Industrials	4,120.6	▲	0.4%	(4.0%)	29.7%
Consumer Goods	233.0	▲	0.1%	(4.7%)	0.4%
Health Care	392.8	▼	(0.8%)	(0.3%)	(4.2%)
Consumer Services	617.6	▼	(2.6%)	(2.6%)	47.3%
Telecommunications	3,312.4	▲	0.3%	(2.1%)	(2.0%)
Banks	23,770.5	▲	0.5%	(0.7%)	26.4%
Insurance	639.7	▼	(0.1%)	7.2%	49.4%
Real Estate	2,861.7	▲	0.7%	(4.3%)	39.4%
Financial Services	3,907.1	▲	0.1%	(4.4%)	44.6%
Technology	10.7	▲	0.9%	0.9%	54.8%
Utilities	258.5	▲	0.4%	-0.4%	-15.2%

Market Breadth		73		52		42
Benchmark Return	Closing	DTD	DTD	MTD	YTD	
	Value	Chg	% Chg	% Chg	% Chg	
Premier Market Index	7,550.15	37.3	0.5%	(1.9%)	24.8%	
Main 50 Index	5,937.53	(19.7)	(0.3%)	(3.7%)	28.1%	
Main Market Index	5,785.16	(10.6)	(0.2%)	(3.2%)	27.1%	
All Share Market Index	6,951.47	22.7	0.3%	(2.2%)	25.3%	
Market Cap (KWD Mn)	41,336.20	138.7	0.3%	(1.8%)	25.3%	

Index Performance relative to Volume



Market Trading Data and Volatility

Trading Indicators	Today's Value	DTD Chg	DTD % Chg	Average Daily YTD 2021	YTD 2020
Volume (Shrs Mn)	296.3	(148.9)	(33.4%)	352.6	214.6
Value Traded (KWD Mn)	56.3	(34.19)	(37.8%)	55.5	44.7
No. of Trades	14,768	(5,387)	(26.7%)	12,689	9,582

Today's Most Active by Value	Close (KWD)	Percent Change	Value (KWD)
Kuwait Finance House	0.819	0.6%	8,583,290
National Bank of Kuwait	0.998	0.3%	5,867,103
GFH Financial Group	0.086	0.6%	4,341,982
Agility (PWC Logistics)	0.956	0.8%	2,825,214
Ahli United Bank - Bahrain	0.277	1.8%	2,738,443

Boursa Kuwait - Premier Market

Monday, November 29, 2021

	Premier Market Stocks	Closing Price			Market Capitalization			Valuation Multiples				ROE	YTD-21 Price Return	YTD-21 Trading Indicators	
		KWD	DTD Chg. (KWD)	D-T-D Return	KWD Mn	Weight in Premier Index	Weight in Boursa Kuwait	P/E (X)	P/BV (X)	Yield	Beta			Volume (Mn Shrs)	Value (KWD Mn)
▲	National Bank of Kuwait	0.998	0.003	0.3%	7,178	23.2%	17.4%	21.6	2.09	1.9%	1.26	9.7%	24.8%	1,112.59	979.24
▲	Gulf Bank	0.247	0.002	0.8%	753	2.4%	1.8%	19.8	1.15	1.9%	1.13	5.8%	12.8%	2,346.12	543.75
=	Kuwait International Bank	0.211	0.000	0.0%	239	0.8%	0.6%	74.2	0.92	0.0%	1.01	1.2%	1.4%	1,144.01	250.26
▲	Burgan Bank	0.222	0.002	0.9%	695	2.2%	1.7%	16.8	1.01	1.9%	1.05	6.0%	24.3%	565.00	126.85
▲	Kuwait Finance House	0.819	0.005	0.6%	6,914	22.3%	16.7%	32.1	3.58	1.1%	1.40	11.2%	33.1%	1,417.03	1,083.97
▼	Boubyan Bank	0.782	(0.005)	(0.6%)	2,487	8.0%	6.0%	57.7	4.51	0.0%	1.05	7.8%	44.6%	266.75	179.46
▲	National Investments Co	0.225	0.008	3.7%	197	0.6%	0.5%	7.1	0.95	4.5%	1.25	13.3%	66.7%	511.32	96.20
=	Kuwait Projects Co. (Holding)	0.145	0.000	0.0%	290	0.9%	0.7%	25.0	1.36	3.4%	0.59	5.4%	(8.8%)	381.82	57.78
=	Al Imtiaz Investment Group	0.117	0.000	0.0%	133	0.4%	0.3%	NM	0.71	0.0%	0.99	NM	4.5%	1,223.46	151.80
▲	Kuwait Real Estate Co.	0.174	0.004	2.4%	165	0.5%	0.4%	26.8	1.26	0.0%	0.98	4.7%	67.6%	2,223.43	313.21
▲	Mabane Co.	0.779	0.002	0.3%	913	2.9%	2.2%	17.3	1.78	0.7%	1.11	10.3%	25.7%	150.82	110.34
▼	National Industries Group (Holding)	0.263	(0.002)	(0.8%)	376	1.2%	0.9%	5.2	0.95	0.0%	1.44	18.3%	49.4%	1,560.97	356.46
▲	Gulf Cable and Electrical Industries	0.918	0.004	0.4%	193	0.6%	0.5%	32.4	0.93	5.4%	0.94	2.9%	21.6%	63.22	52.01
=	Boubyan Petrochemical Co.	0.865	0.000	0.0%	463	1.5%	1.1%	24.6	2.03	6.2%	0.73	8.3%	35.2%	105.91	91.22
▼	Qurain Petrochemicals Industries Co.	0.350	(0.006)	(1.7%)	385	1.2%	0.9%	NM	0.95	4.3%	0.75	NM	3.6%	143.53	54.92
▲	Agility Public Warehousing Co.	0.956	0.008	0.8%	2,132	6.9%	5.2%	2.2	1.04	0.9%	1.49	48.0%	55.6%	714.47	644.13
▲	Mobile Telecommunications Co.	0.586	0.003	0.5%	2,536	8.2%	6.1%	13.4	2.13	3.4%	1.35	15.9%	(3.3%)	695.08	421.60
▲	Human Soft Holding Co.	3.245	0.025	0.8%	397	1.3%	1.0%	7.1	3.54	12.3%	0.49	50.1%	(14.6%)	53.82	192.42
▼	ALAFCO Aviation Lease and Finance Co.	0.229	(0.001)	(0.4%)	218	0.7%	0.5%	NM	0.73	0.0%	0.87	NM	6.0%	495.15	112.17
▲	Ahli United Bank (B.S.C)	0.277	0.005	1.8%	2,807	9.1%	6.8%	19.0	2.14	1.3%	1.13	11.3%	27.0%	3,455.17	822.59
▼	Warba Bank	0.274	(0.003)	(1.1%)	548	1.8%	1.3%	20.9	2.71	0.0%	1.00	13.0%	16.1%	682.14	177.88
▲	Mezzan Holding Co.	0.599	0.001	0.2%	190	0.6%	0.5%	18.7	1.69	2.9%	0.44	9.0%	0.5%	104.56	64.29
▲	Integrated holding Co.	0.377	0.001	0.3%	95	0.3%	0.2%	NM	1.58	0.0%	0.48	NM	3.0%	294.52	115.09
▲	Shamal Az-Zour Al-Oula Power and Water	0.235	0.001	0.4%	259	0.8%	0.6%	20.0	4.17	5.1%	0.66	20.9%	(15.2%)	425.83	106.14
▲	Boursa Kuwait Securities Co.	1.915	0.050	2.7%	384	1.2%	0.9%	24.5	6.81	2.1%	0.74	27.8%	74.1%	93.30	129.66
Subtotal- Premier Market Stocks		7,550.15	37.35	0.5%	30,944	100%	75%	13.5	2.00	1.74%		14.8%	24.8%	20,229.99	7,233.44
Remaining of the Market					10,392		25%	17.6	1.04	1.31%		5.9%		58,049.00	5,087.63

Source: Kamco Invest Research

Boursa Kuwait Daily Bulletin

Monday, November 29, 2021

Company	Reuters Ticker	Valuation Multiples				Price (KWD)		MKT Cap (KWD Mn.)	52 Weeks High (KWD)	52 Weeks Low (KWD)	YTD-21 Return #	Daily Trading Data		YTD-21 Capital Turnover	ROE
		Trailing P/E (X)	Trailing P/BV (X)	Dividend Yield	Beta	Closing	DTD Change					Volume (Shrs.)	Value (KWD)		
▼ Senergy Holding Co.	SENE.KW	NM	0.99	0.00%	1.13	0.050	(0.001)	9.9	0.063	0.021	133.5%	254,846	12,575	179.0%	NM
▲ Independent Petroleum Group	IPGK.KW	15.8	1.12	4.80%	0.27	0.600	0.010	113.0	0.669	0.447	26.3%	200	120	1.9%	7.1%
= National Petroleum Services Co.	NAPS.KW	19.2	2.17	7.66%	0.20	0.810	0.000	81.0	1.150	0.709	(22.8%)	0	0	1.4%	11.3%
▼ The Energy House Co.	ENER.KW	20.2	1.98	0.00%	0.97	0.054	(0.001)	40.5	0.086	0.025	90.1%	796,227	43,358	9.8%	9.8%
▲ Gulf Petroleum Investment	GPIK.KW	NM	0.37	0.00%	1.10	0.027	0.001	12.1	0.031	0.018	37.8%	4,920,045	132,473	396.0%	NM
▲ Burgan Co. for Drilling, Tdg. & Maint. *	ABAR.KW	16.1	0.53	1.94%	0.02	0.149	0.004	36.2	0.201	0.123	(3.9%)	419,772	62,231	150.5%	3.3%
Oil & Gas		33.3	1.08	4.21%				292.7			4.4%	6,391,090	250,757		3.3%
▲ Kuwait Foundry Co.	KFDC.KW	NM	1.87	1.95%	0.63	0.359	0.009	26.0	0.430	0.258	34.0%	475	166	14.0%	1.9%
= Boubyan Petrochemicals Co.*	BPCC.KW	24.6	2.03	6.18%	0.73	0.865	0.000	462.6	0.987	0.625	35.2%	373,348	324,427	19.8%	8.3%
= Al Kout for Industrial Projects Co.	ALKK.KW	NM	1.76	4.43%	0.03	0.451	0.000	45.5	0.675	0.449	(33.2%)	0	0	0.0%	NM
▼ Qurain Petrochemical Industries Co. *	ALQK.KW	NM	0.95	4.33%	0.75	0.350	(0.006)	384.7	0.447	0.334	3.6%	230,638	81,149	13.1%	NM
Basic Materials		65.3	1.37	5.20%				918.8			14.7%	604,461	405,742		2.1%
▼ Specialities Group Holding Co.	SPEC.KW	NM	0.69	0.00%	0.45	0.126	(0.003)	20.8	0.169	0.073	60.9%	2,658,119	341,041	305.6%	0.6%
▼ Kuwait Cement Co.	KCEM.KW	NM	0.87	0.00%	0.53	0.232	(0.001)	170.1	0.266	0.215	0.4%	56,501	13,087	9.3%	NM
▲ Gulf Cable & Electrical Ind. Co.	CABL.KW	32.4	0.93	5.45%	0.94	0.918	0.004	192.7	1.011	0.728	21.6%	174,424	159,208	30.1%	2.9%
▲ Heavy Eng'g Ind. & Shipbuilding Co.	SHIP.KW	14.3	1.23	4.40%	0.59	0.455	0.003	82.0	0.524	0.392	14.6%	350,278	157,680	80.3%	8.6%
▼ Kuwait Portland Cement Co.	PCEM.KW	13.1	1.30	4.16%	0.46	0.962	(0.017)	96.4	1.050	0.766	22.5%	14,527	13,963	15.3%	10.0%
= Shuaiba Industrial Co.	PAPE.KW	20.4	1.27	4.29%	0.13	0.230	0.000	23.2	0.230	0.145	48.4%	0	0	5.0%	6.2%
= Metal & Recycling Co.	MRCK.KW	NM	1.61	0.00%	0.21	0.102	0.000	12.0	0.196	0.051	92.1%	500	51	14.6%	NM
= ACICO Industries Co.	ACIC.KW	4.5	0.52	0.00%	0.39	0.128	0.000	38.6	0.146	0.082	42.4%	1,237,227	159,316	75.6%	11.6%
= Hilal Cement Co.	HCCK.KW	NM	1.71	0.00%	0.10	0.141	0.000	7.1	0.180	0.069	54.9%	0	0	2.3%	NM
▼ National Industries Co.	NIBM.KW	18.4	0.82	0.00%	0.17	0.190	(0.002)	70.8	0.218	0.150	21.8%	53,000	9,980	4.4%	4.5%
▼ Equipment Holding Co.	EQUI.KW	NM	0.80	0.00%	1.04	0.053	(0.005)	4.2	0.079	0.027	79.1%	1,578,669	87,906	238.4%	NM
▼ National Co. for Consumer Industries	NCCI.KW	NM	1.46	0.00%	NA	0.115	(0.001)	10.4	0.198	0.038	135.2%	1,276,566	150,626	697.4%	NM
▼ Salbookh Trading Co.	SALB.KW	NM	0.85	0.00%	0.60	0.045	(0.003)	4.7	0.072	0.035	18.3%	1,001,486	46,240	239.1%	NM
▲ Agility (PWC Logistics)	AGLT.KW	2.2	1.04	0.91%	1.49	0.956	0.008	2,132.0	1.090	0.592	55.6%	2,952,031	2,825,214	32.0%	48.0%
▲ Educational Holding Group*	EDUK.KW	8.6	1.52	0.00%	0.48	0.600	0.020	57.2	0.900	0.433	82.9%	49,635	29,710	21.4%	17.7%
▲ National Cleaning Co.	CLEA.KW	NM	0.45	0.00%	0.80	0.059	0.000	14.8	0.080	0.045	10.8%	296,784	17,822	118.0%	NM
▼ Kuwait & Gulf Link Transport Co.	KGLK.KW	NM	0.48	0.00%	0.79	0.064	(0.000)	18.7	0.106	0.044	22.0%	909,335	58,353	72.4%	NM
▼ Kuwait Co. For Process Plant Const. & Cont.	KCPC.KW	9.8	1.89	8.31%	0.48	0.500	0.010	57.9	0.629	0.367	30.3%	1,001	501	25.5%	19.3%
▲ Humansoft Holding Co.	HUMN.KW	7.1	3.54	12.27%	0.49	3.245	0.025	396.7	4.030	3.170	(14.6%)	225,592	727,145	44.0%	50.1%
▼ Gulf Franchising Co.	GFCI.KW	4.4	1.47	0.00%	NA	0.077	(0.007)	3.1	0.115	0.032	28.3%	11,680	902	4.2%	33.4%
= National Shooting Co.	SHOOTING.KW	NM	0.71	0.00%	1.20	0.039	0.000	10.9	0.043	0.019	108.6%	0	0	98.6%	NM
▼ Combined Group Contracting Co.	CGCK.KW	14.6	1.33	1.79%	0.65	0.335	(0.002)	57.5	0.399	0.196	66.7%	283,755	95,192	93.5%	9.1%
▼ United Projects Group	UPAC.KW	NM	1.03	0.00%	0.06	0.273	(0.007)	104.4	0.365	0.186	(5.9%)	23,602	6,313	8.8%	1.0%
▼ ALAFCO Aviation Lease & Finance Co.*	ALAF.KW	NM	0.73	0.00%	0.87	0.229	(0.001)	218.0	0.256	0.198	6.0%	1,517,913	349,402	52.0%	NM
▼ Mubarrad Holding Co.	MBRD.KW	14.7	0.81	0.00%	0.96	0.106	(0.003)	17.4	0.130	0.063	48.3%	1,589,105	170,754	254.5%	5.6%
= KGL Logistics Co.	LOGK.KW	NM	0.25	0.00%	0.76	0.032	0.000	23.4	0.034	0.027	12.8%	0	0	21.7%	NM
▲ Integrated holding Co.	INTEGRATED.KW	NM	1.58	0.00%	0.48	0.377	0.001	95.4	0.399	0.310	3.0%	2,261,161	855,098	116.4%	NM
= Umm Al-Qaiwain General Investments Co.	QIC.KW	8.2	0.67	5.05%	0.18	0.099	0.000	35.9	0.099	0.063	32.0%	0	0	1.2%	8.2%
= Fujairah Cement Industries Co.	FCM.KW	NM	0.25	0.00%	0.48	0.049	0.000	17.5	0.069	0.028	43.9%	184,875	8,918	22.1%	NM
= Ras-Al-Khaimah for White Cement Co.	RKWC.KW	28.5	1.06	3.70%	0.14	0.135	0.000	67.5	0.175	0.061	107.7%	0	0	4.8%	3.7%
▲ Jassim Transport & Stevedoring Co.	JTC.KW	29.8	1.40	5.05%	NA	0.396	0.006	59.4	0.450	0.384	0.0%	75	30	26.4%	4.7%
Industrials		3.9	1.04	2.43%				4,120.6			29.7%	18,707,841.0	6,284,451		26.5%

Boursa Kuwait Daily Bulletin

Monday, November 29, 2021

Company	Reuters Ticker	Valuation Multiples				Price (KWD)		MKT Cap (KWD Mn.)	52 Weeks High (KWD)	52 Weeks Low (KWD)	YTD-21 Return #	Daily Trading Data		YTD-21 Capital Turnover	ROE
		Trailing P/E (X)	Trailing P/BV (X)	Dividend Yield	Beta	Closing	DTD Change					Volume (Shrs.)	Value (KWD)		
= Palms Agro Production Co.	PAPK.KW	NM	0.67	0.00%	0.27	0.073	0.000	3.8	0.090	0.050	13.6%	0	0	2.2%	NM
= Livestock Transport & Trading Co.	CATT.KW	NM	1.07	0.00%	0.26	0.180	0.000	39.0	0.210	0.177	2.3%	9,000	1,620	11.5%	NM
▲ Mezzan Holding Co.	MEZZ.KW	18.7	1.69	2.89%	0.44	0.599	0.001	190.2	0.679	0.554	0.5%	146,746	87,814	32.9%	9.0%
Consumer Goods		57.5	1.51	2.36%				233.0			0.4%	155,746	89,434		2.6%
▼ Advanced Technology Co.	ATCK.KW	11.6	1.17	2.99%	0.00	0.501	(0.022)	75.2	0.600	0.401	(12.1%)	1,500	752	1.0%	10.1%
= Yiacco Medical Co.	YIAC.KW	NM	6.30	0.00%	NA	0.448	0.000	7.7	0.825	0.403	(46.7%)	0	0	1.4%	NM
= Al-Maidan Clinic For Oral Health Services Co.	MIDAN.KW	NM	6.16	0.81%	NA	1.240	0.000	310.0	1.240	1.200	0.0%	0	0	0.1%	NM
Health Care		NM	3.40	1.21%				392.8			(4.2%)	1,500	752		NM
= Kuwait National Cinema Co.	KCIN.KW	NM	1.29	0.00%	0.30	0.909	0.000	91.9	0.990	0.700	21.2%	30	27	1.4%	1.2%
▼ Kuwait Hotels Co.	KHOT.KW	8.0	1.15	0.00%	NA	0.090	(0.005)	5.2	0.113	0.050	51.8%	1,000	90	20.1%	14.3%
▲ Sultan Center Food Products Co.	SCFK.KW	1.1	0.64	0.00%	0.44	0.218	0.004	63.1	0.269	0.097	118.0%	296,584	64,308	68.6%	55.8%
▲ IFA Hotels & Resorts Co.*	IFAH.KW	22.6	5.62	0.00%	0.33	0.056	0.001	35.5	0.073	0.019	186.7%	2,808,117	157,972	140.5%	24.9%
▲ Oula Fuel Marketing Co.	OULA.KW	14.1	0.86	3.18%	0.48	0.155	0.001	62.7	0.178	0.114	26.0%	46,348	7,107	24.0%	6.1%
▲ Kuwait Resorts Co.	MUNK.KW	14.7	0.66	2.04%	0.71	0.098	0.002	20.6	0.112	0.060	55.4%	1,301,639	127,038	204.4%	4.5%
▼ Jazeera Airways Co.	JAZK.KW	NM	8.67	0.00%	0.72	1.000	(0.120)	200.0	1.345	0.588	37.0%	1,720,725	1,745,220	52.5%	NM
▲ Soor Fuel Marketing Co.	SOOR.KW	15.5	0.90	3.24%	0.49	0.153	0.008	61.9	0.175	0.116	25.4%	88,321	13,259	11.7%	5.8%
▼ Future Kid Entertainment and R.E Co.	KIDK.KW	NM	0.77	0.00%	0.04	0.078	(0.001)	9.0	0.122	0.064	(8.8%)	369,884	28,551	186.3%	NM
▲ Jiyad Holding Co	JIYAD.KW	NM	0.77	0.00%	0.68	0.081	0.004	28.3	0.099	0.036	82.6%	18,200	1,354	41.2%	NM
▲ Al Eid Food Co.	ALEID.KW	18.8	1.93	1.53%	NA	0.272	0.005	39.3	0.310	0.069	293.3%	159,612	43,093	121.3%	10.3%
Consumer Services		11.5	1.39	0.81%				617.6			47.3%	6,810,460	2,188,019		12.1%
▲ Zain	ZAIN.KW	13.4	2.13	3.41%	1.35	0.586	0.003	2,535.7	0.641	0.580	(3.3%)	2,831,828	1,660,432	16.1%	15.9%
▼ National Mobile Telecom Co.	OORE.KW	29.9	0.61	2.30%	0.47	0.649	(0.003)	327.1	0.711	0.620	3.5%	155,097	100,818	1.9%	2.0%
▲ AAN digital services Co.	AAN.KW	NM	0.68	0.00%	1.33	0.018	0.000	15.7	0.020	0.011	45.2%	8,766,797	158,346	341.7%	NM
▼ Kuwait Telecommunication Co.	STC.KW	14.9	1.96	7.07%	0.55	0.849	(0.006)	424.0	0.970	0.822	(0.4%)	125,438	106,969	5.1%	13.2%
▲ Hayat Communications Co.	HAYK.KW	NM	0.91	0.00%	1.14	0.107	0.001	9.9	0.124	0.051	91.1%	51,000	5,195	154.8%	0.6%
Telecommunications		14.5	1.68	3.74%				3,312.4			(2.0%)	11,930,160	2,031,760		11.5%
▲ National Bank of Kuwait	NBKK.KW	21.6	2.09	1.88%	1.26	0.998	0.003	7,178.3	1.057	0.792	24.8%	5,860,482	5,867,103	15.5%	9.7%
▲ Gulf Bank	GBKK.KW	19.8	1.15	1.92%	1.13	0.247	0.002	752.9	0.265	0.205	12.8%	2,448,058	604,431	77.0%	5.8%
= Commercial Bank of Kuwait	CBKK.KW	42.0	1.25	0.00%	0.37	0.500	0.000	996.0	0.605	0.485	0.0%	195,521	97,764	3.7%	3.0%
▲ Ahli Bank of Kuwait	ABKK.KW	NM	0.80	0.00%	0.66	0.240	0.001	408.0	0.264	0.186	20.6%	292,678	70,120	12.8%	NM
▲ Ahli United Bank - Kuwait	BKME.KW	22.1	1.60	0.00%	0.85	0.313	0.001	745.7	0.332	0.258	19.1%	282,625	87,836	5.5%	7.2%
= Kuwait International Bank	KIBK.KW	74.2	0.92	0.00%	1.01	0.211	0.000	239.0	0.233	0.198	1.4%	12,091,372	2,565,182	101.0%	1.2%
▲ Burgan Bank	BURG.KW	16.8	1.01	1.88%	1.05	0.222	0.002	695.1	0.240	0.195	24.3%	1,592,297	352,358	18.0%	6.0%
▲ Kuwait Finance House	KFH.KW	32.1	3.58	1.10%	1.40	0.819	0.005	6,913.6	0.849	0.611	33.1%	10,457,771	8,583,290	16.8%	11.2%
▼ Boubyan Bank	BOUK.KW	57.7	4.51	0.00%	1.05	0.782	(0.005)	2,486.5	0.835	0.516	44.6%	1,024,783	807,904	8.4%	7.8%
▼ Warba Bank	WARB.KW	20.9	2.71	0.00%	1.00	0.274	(0.003)	548.0	0.298	0.210	16.1%	4,411,879	852,469	34.1%	13.0%
▲ Ahli United Bank - Bahrain	AUBK.KW	19.0	2.14	1.31%	1.13	0.277	0.005	2,807.3	0.297	0.204	27.0%	9,865,415	2,738,443	34.1%	11.3%
Banks		27.5	2.20	1.16%				23,770.5			26.4%	48,522,881	22,626,901		8.0%

Boursa Kuwait Daily Bulletin

Monday, November 29, 2021

Company	Reuters Ticker	Valuation Multiples				Price (KWD)		MKT Cap (KWD Mn.)	52 Weeks High (KWD)	52 Weeks Low (KWD)	YTD-21 Return #	Daily Trading Data		YTD-21 Capital Turnover	ROE
		Trailing P/E (X)	Trailing P/BV (X)	Dividend Yield	Beta	Closing	DTD Change					Volume (Shrs.)	Value (KWD)		
▲ Kuwait Insurance Co.	KINS.KW	6.8	0.64	7.38%	0.01	0.387	0.003	75.1	0.459	0.360	0.5%	75,820	29,277	12.6%	9.3%
= Gulf Insurance Group	GINS.KW	6.6	1.49	0.00%	0.07	1.110	0.000	315.9	1.200	0.536	37.5%	46,809	50,745	2.3%	22.6%
= Ahleiah Insurance Co.	AINS.KW	7.7	0.84	4.85%	0.13	0.483	0.000	106.5	0.561	0.419	7.9%	0	0	6.0%	10.9%
▼ Warba Insurance Co.	WINS.KW	12.0	0.69	4.88%	0.36	0.148	(0.005)	27.3	0.176	0.077	83.2%	203,158	30,076	98.9%	5.8%
= Kuwait Reinsurance Co.	KWRE.KW	13.5	1.24	1.34%	0.14	0.345	0.000	76.0	0.527	0.212	78.3%	0	0	0.1%	9.2%
▼ First Takaful Insurance Co.	FTIK.KW	NM	0.71	0.00%	0.36	0.053	(0.003)	5.7	0.081	0.034	43.8%	10,000	560	9.1%	NM
▼ Wethaq Takaful Insurance Co.	WETH.KW	26.8	0.49	0.00%	0.47	0.054	(0.002)	5.9	0.102	0.020	164.2%	297,002	16,278	332.3%	1.8%
= Bahrain Kuwait Insurance Co.	BKIK.KW	8.6	0.84	7.85%	0.02	0.191	0.000	27.3	0.000	0.000	(4.5%)	0	0	0.0%	9.8%
Insurance		7.7	1.05	2.38%				639.7			49.4%	632,789	126,937		13.6%
▲ Sokouk Holding Co.	SHCK.KW	NM	0.79	0.00%	1.16	0.031	0.000	18.6	0.038	0.022	34.8%	1,020,808	31,630	109.5%	NM
▲ Kuwait Real Estate Co.	KREK.KW	26.8	1.26	0.00%	0.98	0.174	0.004	164.8	0.193	0.100	67.6%	3,366,635	579,880	234.7%	4.7%
= United Real Estate Co.	UREK.KW	NM	0.51	0.00%	0.42	0.077	0.000	91.5	0.085	0.043	63.8%	28,386	2,156	11.9%	NM
▲ National Real Estate Co.	NREK.KW	1.6	0.72	0.00%	1.19	0.213	0.002	351.7	0.242	0.071	226.3%	11,228,554	2,406,883	143.4%	45.5%
▲ Salhia Real Estate Co.	SREK.KW	45.4	1.71	5.51%	0.35	0.525	0.001	269.2	0.607	0.501	4.4%	479,780	254,534	15.9%	3.8%
▼ Tamdeen Real Estate Co.	TAMK.KW	20.5	0.72	0.00%	0.13	0.324	(0.004)	140.0	0.374	0.235	20.0%	94,464	30,590	6.3%	3.5%
▼ Ajial Real Estate Entertainment Co.	AREC.KW	18.1	0.46	0.00%	0.50	0.306	(0.001)	59.5	0.345	0.170	67.2%	162,070	49,535	15.9%	2.5%
▲ Al Massaleh Real Estate Co.	MREC.KW	NM	0.65	0.00%	0.30	0.053	0.003	12.5	0.085	0.030	54.7%	2,050	108	22.9%	NM
▲ Arab Real Estate Co.	ARAB.KW	15.8	0.44	0.00%	1.21	0.045	0.002	22.7	0.052	0.025	73.2%	605,710	26,166	107.1%	2.8%
▼ AL-Enma'a Real Estate Co.*	ENMA.KW	NM	0.79	0.00%	0.68	0.078	(0.000)	35.0	0.091	0.047	60.7%	1,181,446	91,162	114.3%	0.8%
▲ Mabanee Co.	MABK.KW	17.3	1.78	0.72%	1.11	0.779	0.002	912.5	0.868	0.611	25.7%	1,545,737	1,201,718	12.9%	10.3%
▲ Injazzat Real Estate Development Co.	INJA.KW	NM	0.70	0.00%	0.21	0.105	0.004	36.3	0.113	0.067	40.9%	71,331	7,316	120.6%	0.7%
▲ Investors Holding Group Co.	INVK.KW	NM	0.72	0.00%	1.21	0.015	0.000	9.0	0.020	0.013	(17.1%)	8,220,679	118,957	308.7%	NM
= The Commercial Real Estate Co.	TIJK.KW	14.3	0.77	2.33%	0.58	0.123	0.000	226.4	0.140	0.091	11.2%	1,964,393	243,550	48.9%	5.4%
▲ Sanam Real Estate Co.	SANK.KW	NM	1.16	0.00%	0.43	0.090	0.013	11.0	0.094	0.028	160.3%	452,579	38,119	73.3%	0.1%
▲ A'ayan Real Estate Co.	AYRE.KW	NM	0.63	0.00%	0.60	0.089	0.000	37.0	0.116	0.057	53.6%	1,212,252	107,614	135.9%	NM
▼ Aqar Real Estate Investment Co.	AQAR.KW	NM	0.72	0.00%	NA	0.077	(0.001)	19.0	0.098	0.058	30.7%	338,869	25,970	103.1%	0.7%
▼ Kuwait Real Estate Holding Co.	ALAQ.KW	9.1	0.79	0.00%	0.53	0.048	(0.000)	9.2	0.059	0.024	92.8%	1,225,888	60,932	63.1%	8.7%
▲ MAZAYA Holding Co.	MAZA.KW	NM	0.78	0.00%	1.00	0.074	0.002	50.9	0.122	0.056	29.4%	7,018,595	513,851	405.0%	NM
▲ Tijara Real Estate & Investment Co.	TIJA.KW	18.4	0.56	0.00%	0.33	0.060	0.000	22.2	0.073	0.042	42.6%	1,557,119	93,772	215.5%	3.0%
▲ Al TAMEER Real Estate Investment Co.	AMAR.KW	7.0	0.65	0.00%	1.00	0.044	0.003	10.6	0.054	0.018	120.0%	2,486,793	107,177	265.4%	9.3%
▲ Arkan Al-Kuwait Real Estate Co. *	ARKK.KW	17.4	1.04	2.86%	0.26	0.140	0.006	35.2	0.152	0.086	65.1%	1	0	15.3%	6.0%
▲ Al-Argan International Real Estate Co.	ARGK.KW	NM	0.38	0.00%	0.39	0.112	0.005	29.7	0.124	0.091	1.8%	2,100	235	1.4%	NM
▲ Munshaat Real Estate Projects Co.	MUNS.KW	NM	2.98	0.00%	0.64	0.069	0.004	22.1	0.121	0.045	(2.7%)	5,500	359	11.8%	NM
▲ First Dubai For Real Estate Development	FIRST.KW	NM	0.96	0.00%	1.46	0.071	0.001	71.0	0.088	0.040	73.2%	1,234,118	88,161	51.2%	1.1%
▲ Kuwait Business Town Real Estate Co.	KBTK.KW	NM	0.84	0.00%	1.10	0.088	0.002	53.0	0.104	0.038	121.5%	348,969	29,959	94.2%	NM
= Real Estate Asset Management Co.	REAM.KW	NM	1.02	0.00%	0.09	0.090	0.000	9.9	0.000	0.000	0.0%	0	0	0.0%	NM
▼ MENA Real Estate Co. *	MENK.KW	NM	0.44	0.00%	0.99	0.050	(0.007)	6.8	0.105	0.027	79.1%	29,873,128	1,526,257	683.0%	NM
= Al Mudon International Real Estate Co.	ALMK.KW	NM	0.17	0.00%	0.82	0.021	0.000	2.1	0.027	0.019	14.4%	0	0	110.8%	0.1%
▼ Real Estate Trade Centers Co.	MARA.KW	NM	0.52	0.00%	0.39	0.086	(0.000)	12.8	0.123	0.027	209.8%	22,054	1,920	30.3%	NM
▼ Kuwait Remal Real Estate Co.	REMA.KW	NM	0.70	0.00%	0.88	0.018	(0.000)	5.5	0.028	0.016	(11.4%)	475,366	8,620	119.7%	NM
▲ Mashaer Holding Co.	MASHAER.KW	NM	0.82	0.00%	0.54	0.076	0.006	13.6	0.086	0.056	29.7%	315,950	22,461	51.1%	NM
= Ajwan Gulf Real Estate Co.	AJWN.KW	NM	20.17	0.00%	0.55	0.011	0.000	2.2	0.000	0.000	0.0%	0	0	0.0%	NM
▲ Al Masaken Intl. Real Estate Dev. Co.	MASKN.KW	NM	0.75	0.00%	0.19	0.048	0.003	4.8	0.069	0.025	92.3%	998,739	46,466	541.9%	NM
▲ Dalqan Real Estate Co.	DALQ.KW	NM	1.79	0.00%	0.00	0.244	0.010	12.1	0.300	0.198	(10.9%)	21,491	4,841	45.3%	0.7%
= Dar Al Thuraya Real Estate Co.	THURY.KW	37.5	0.91	0.00%	NA	0.099	0.000	14.5	0.128	0.046	55.8%	0	0	4.0%	2.4%
▼ Osos Holding Group Co.	OSOS.KW	15.2	1.00	6.31%	0.29	0.111	(0.004)	11.7	0.131	0.083	23.3%	895,252	98,106	72.0%	6.6%
▲ KFH Capital REIT	BAITAKREIT.KW	NA	NA	1.43%	NA	1.290	0.011	30.4	1.311	1.018	26.3%	4,569	5,900	13.7%	NA
▼ Land United Real Estate Co.	LAND.KW	NM	0.85	0.00%	NA	0.100	(0.004)	15.0	0.200	0.095	(22.5%)	2,702,161	278,134	62.7%	NM
Real Estate		12.2	0.98	1.01%				2,861.7			39.4%	81,163,536	8,103,039		8.0%

Boursa Kuwait Daily Bulletin

Monday, November 29, 2021

Company	Reuters Ticker	Valuation Multiples				Price (KWD)		MKT Cap (KWD Mn.)	52 Weeks High (KWD)	52 Weeks Low (KWD)	YTD-21 Return #	Daily Trading Data		YTD-21 Capital Turnover	ROE
		Trailing P/E (X)	Trailing P/BV (X)	Dividend Yield	Beta	Closing	DTD Change					Volume (Shrs.)	Value (KWD)		
= Kuwait Investment Co.	KINV.KW	6.1	1.21	0.00%	0.75	0.273	0.000	150.5	0.317	0.119	123.8%	334,059	91,492	66.5%	20.1%
▼ Commercial Facilities Co.	FACI.KW	5.1	0.68	4.69%	0.53	0.202	(0.003)	108.4	0.220	0.168	6.3%	121,000	24,467	13.2%	13.3%
= Int'l Financial Advisors Co.	IFIN.KW	3.6	0.88	0.00%	1.26	0.113	0.000	30.1	0.145	0.059	89.0%	1,596,560	179,172	584.1%	24.8%
▲ National Investment Co.	NINV.KW	7.1	0.95	4.45%	1.25	0.225	0.008	197.1	0.251	0.128	66.7%	10,875,957	2,411,470	58.4%	13.3%
= Kuwait Projects Co.(Holding)	KPRO.KW	25.0	1.36	3.39%	0.59	0.145	0.000	290.0	0.170	0.140	(8.8%)	1,600,178	229,688	19.1%	5.4%
= Coast Invest. & Development Co.	COAS.KW	NM	1.05	0.00%	1.31	0.110	0.000	51.2	0.127	0.050	126.8%	4,419,170	489,061	157.1%	NM
▲ The Securities House Co.	SECH.KW	NM	0.99	0.00%	1.15	0.099	0.001	44.6	0.117	0.052	132.9%	4,812,159	481,596	406.5%	NM
= Arzan Financial Group For Fin. & Invest.	ARZA.KW	24.7	1.08	0.00%	1.02	0.160	0.000	128.5	0.183	0.055	186.7%	2,029,545	325,245	315.4%	4.4%
▲ Kuwait Financial Centre	MARKZ.KW	4.5	0.78	0.00%	0.79	0.169	0.001	81.3	0.207	0.080	102.6%	2,893,458	493,990	114.3%	17.4%
= Kuwait & M.E. Financial Inv. Co.	KMEF.KW	11.8	1.18	0.00%	0.58	0.135	0.000	29.7	0.198	0.123	10.7%	0	0	14.5%	10.0%
▼ First Investment Co.	OLAK.KW	NM	0.74	0.00%	1.06	0.078	(0.001)	34.9	0.095	0.039	82.1%	3,526,781	278,220	740.2%	NM
= Al-Mal Investment Co.	MALK.KW	NM	0.25	0.00%	1.13	0.006	0.000	1.8	0.000	0.000	0.0%	0	0	0.0%	NM
= Gulf Investment House	GIHK.KW	31.5	4.72	0.00%	1.00	0.299	0.000	194.0	0.340	0.076	259.4%	101	30	76.6%	15.0%
▲ A'ayan Leasing & Investment Co.	AAYA.KW	3.6	1.27	0.00%	1.25	0.153	0.003	109.2	0.204	0.097	66.5%	5,309,609	805,488	345.8%	35.3%
▲ Bayan Investment Co.	BAYK.KW	NM	0.47	0.00%	0.80	0.050	0.000	19.7	0.065	0.032	20.1%	61,501	3,081	177.7%	0.1%
▲ Osoul Investment Co.	OSUL.KW	NM	0.78	0.00%	0.45	0.089	0.000	13.2	0.106	0.061	11.3%	12,790	1,094	37.1%	NM
▲ Kuwait Finance & Investment Co.	KFSK.KW	5.4	0.65	0.00%	0.36	0.087	0.002	27.9	0.125	0.042	101.2%	122,175	10,309	58.5%	11.9%
▼ Kamco Investment Co.	KAMC.KW	6.6	0.76	0.00%	0.44	0.132	(0.001)	45.2	0.149	0.072	78.6%	430,235	57,292	80.4%	11.6%
▲ National International Holding Co.	NIHK.KW	NM	0.97	0.00%	0.68	0.158	0.005	36.0	0.179	0.069	90.8%	1,271,359	197,087	137.1%	NM
▼ UniCap Investment and Finance	UNICAP.KW	5.9	0.83	0.00%	0.71	0.069	(0.003)	16.4	0.097	0.036	63.3%	521,206	36,093	113.4%	14.1%
▼ Al Madar Finance & Investment Co.	MADR.KW	NM	1.04	0.00%	0.39	0.104	(0.002)	22.2	0.156	0.086	14.2%	311,636	32,541	100.1%	NM
▼ Al-Deera Holding	DEER.KW	29.6	1.05	0.00%	1.02	0.166	(0.019)	15.2	0.223	0.018	86.2%	182,079	27,991	338.1%	3.6%
= Al-Safat Investment Co.	ALSAFAT.KW	3.2	1.43	0.00%	NA	0.132	0.000	33.9	0.157	0.120	0.0%	909,760	118,727	119.5%	44.9%
▲ Al Salam Group Holding Co.	SAGH.KW	NM	0.33	0.00%	1.31	0.028	0.001	7.7	0.037	0.024	12.7%	1,581,243	44,714	338.9%	NM
▲ Ektitab Holding Co.	EKTT.KW	NM	0.47	0.00%	0.98	0.020	0.001	6.2	0.024	0.015	29.8%	1,865,023	36,791	208.4%	NM
= Al Madina For Finance & Investment Co.	MADI.KW	1.8	0.43	0.00%	1.17	0.016	0.000	6.6	0.019	0.015	3.2%	0	0	105.7%	23.8%
▼ NOOR Financial Investment Co.	NOOR.KW	8.0	1.54	1.92%	1.21	0.323	(0.006)	129.1	0.399	0.168	90.0%	279,579	92,258	39.4%	19.2%
= Tamdeen Investment Co.	TAMI.KW	NM	0.48	0.00%	0.34	0.382	0.000	131.8	0.414	0.200	23.2%	0	0	3.9%	0.3%
▼ Kuwait Syrian Holding Co.	KSHC.KW	77.1	1.17	0.00%	0.70	0.048	(0.002)	8.4	0.060	0.025	49.2%	1,780,253	86,018	52.9%	1.5%
▲ Asiya Capital Investment Co.	ASIYA.KW	NM	0.54	0.00%	0.53	0.049	0.001	39.4	0.057	0.034	34.3%	220,617	10,810	62.8%	NM
▲ Gulf North Africa Holding Co.	GNAH.KW	59.2	1.16	0.00%	1.04	0.083	0.002	12.4	0.087	0.057	27.0%	127,090	10,503	23.1%	2.0%
= Alimtiyaz Investment Group	ALIMK.KW	NM	0.71	0.00%	0.99	0.117	0.000	132.6	0.142	0.106	4.5%	2,677,318	315,422	107.9%	NM
▼ Manazel Holding Co.	MANK.KW	24.3	1.08	0.00%	1.37	0.051	(0.001)	22.0	0.060	0.031	60.9%	4,729,275	243,283	280.2%	4.5%
▼ National Industries Group	NIND.KW	5.2	0.95	0.00%	1.44	0.263	(0.002)	375.5	0.296	0.165	49.4%	4,197,603	1,115,631	190.3%	18.3%
▼ Warba Capital Holding Co.	WARBACAP.KW	NM	0.63	0.00%	0.68	0.099	(0.001)	5.0	0.145	0.045	103.7%	2,159	214	130.8%	NM
= Arabi Holding Group Co.	AGHC.KW	NM	1.11	0.00%	0.16	0.182	0.000	31.5	0.228	0.102	(8.1%)	143,962	25,782	89.4%	0.3%
▲ Privatization Holding Co.	KPPC.KW	NM	0.45	0.00%	0.80	0.056	0.001	34.0	0.070	0.039	39.2%	2,441,700	136,270	230.6%	NM
▼ Credit Rating & Collection Co.	TAHS.KW	NM	1.90	0.00%	0.03	0.054	(0.001)	9.0	0.069	0.020	146.8%	1,976,474	120,781	40.3%	NM
▼ Egypt Kuwait Holding Co.	EKKH.KW	11.4	2.45	0.00%	0.18	0.415	(0.008)	467.7	0.465	0.293	28.6%	586,062	244,883	5.8%	21.6%
▲ GFH Financial Group	GFH.KW	13.1	1.12	2.11%	0.87	0.086	0.000	324.7	0.104	0.047	83.4%	49,792,053	4,341,982	105.6%	8.5%
▼ Inovest	INOV.KW	NM	0.79	0.00%	0.74	0.112	(0.005)	33.7	0.134	0.063	70.7%	1,969,450	226,474	304.4%	NM
▲ Al Bareeq Holding	BAREEQ.KW	NM	0.63	0.00%	NA	0.038	0.000	28.8	0.102	0.034	(41.7%)	2,993,675	113,990	167.6%	NM
▼ Amar For Finance and Leasing Co.	AMARF.KW	11.4	0.75	0.00%	0.07	0.069	(0.003)	13.7	0.097	0.039	41.1%	1,345,418	91,393	32.8%	6.6%
▲ Al-Manar Financing & Leasing Co.	ALMANAR.KW	NM	0.70	0.00%	0.56	0.070	0.003	21.6	0.085	0.048	41.1%	267,766	18,136	35.0%	NM
▲ Boursa Kuwait Securities Co	BOURSA.KW	24.5	6.81	2.09%	0.74	1.915	0.050	384.5	2.432	1.091	74.1%	200,314	377,296	46.5%	27.8%
Financial Services		11.7	1.14	1.05%				3,907.1			44.6%	120,518,352	13,946,766		9.7%

Boursa Kuwait Daily Bulletin

Monday, November 29, 2021

Company	Reuters Ticker	Valuation Multiples				Price (KWD)		MKT Cap (KWD Mn.)	52 Weeks High (KWD)	52 Weeks Low (KWD)	YTD-21 Return #	Daily Trading Data		YTD-21 Capital Turnover	ROE
		Trailing P/E (X)	Trailing P/BV (X)	Dividend Yield	Beta	Closing	DTD Change					Volume (Shrs.)	Value (KWD)		
▲ Automated Systems Co.	ASCK.KW	NM	0.92	0.00%	0.18	0.107	0.001	10.7	0.122	0.068	54.8%	180	19	38.4%	NM
Technology		NM	0.92	0.00%				10.7			54.8%	180	19		NM
▲ Shamal Az-Zour Al-Oula Power and Water Co.	AZNOULA.KW	20.0	4.17	5.11%	0.66	0.235	0.001	258.5	0.276	0.220	(15.2%)	862,125	201,844	38.7%	20.9%
Utilities		20.0	4.17	5.11%				258.5			(15.2%)	862,125	201,844		20.9%
Boursa Kuwait		14.3	1.62	1.63%				41,336.2			25.26%	296,301,121	56,256,420		11.3%

Year-to-Date 2021 Top Movers & Most Active Stocks

YTD Top % Gainers	Close (KWD)	Percent Change	YTD Top % Losers	Close (KWD)	Percent Change
Al Eid Food Co.	0.272	293.3%	Yiaco Medical Co.	0.448	(46.7%)
Gulf Investment House	0.299	259.4%	Al Bareeq Holding	0.038	(41.7%)
National Real Estate Co.	0.213	226.3%	Al Kout for Industrial Projects Co.	0.451	(33.2%)
Real Estate Trade Centers Co.	0.086	209.8%	National Petroleum Services Co.	0.810	(22.8%)
Arzan Financial Group For Fin. & Invest.	0.160	186.7%	Land United Real Estate Co.	0.100	(22.5%)
YTD Most Active by Volume	Close (KWD)	Volume (Shrs.)	YTD Most Active by Value	Close (KWD)	Value (KWD)
GFH Financial Group	0.086	3,988,860,957	Kuwait Finance House	0.819	1,083,967,653
Ahli United Bank - Bahrain	0.277	3,455,165,872	National Bank of Kuwait	0.998	979,238,996
First Investment Co.	0.078	3,301,010,889	Ahli United Bank - Bahrain	0.277	822,586,456
AAN Digital Services Co.	0.018	2,980,391,373	Agility (PWC Logistics)	0.956	644,128,886
MAZAYA Holding Co.	0.074	2,787,570,371	Gulf Bank	0.247	543,748,559

* Different Fiscal Year Company

Disclaimer & Important Disclosures

Kamco Invest is authorized and fully regulated by the Capital Markets Authority ("CMA, Kuwait") and partially regulated by the Central Bank of Kuwait ("CBK").

This document is provided for informational purposes only. Nothing contained in this document constitutes investment, an offer to invest, legal, tax or other advice or guidance and should be disregarded when considering or making investment decisions. In preparing this document, Kamco Invest did not take into account the investment objectives, financial situation and particular needs of any particular person. Accordingly, before acting on this document, investors should independently evaluate the investments and strategies referred to herein and make their own determination of whether it is appropriate in light of their own financial circumstances and objectives. The entire content of this document is subject to copyright with all rights reserved. This research and the information contained herein may not be reproduced, distributed or transmitted in Kuwait or in any other jurisdiction to any other person or incorporated in any way into another document or other material without our prior written consent.

Analyst Certification

Each of the analysts identified in this report, if any and where applicable, certifies, with respect to the sector, companies or securities that the individual analyses, that (1) the views expressed in this report reflect his or her personal views about all of the subject companies and securities and (2) no part of his or her compensation was, is or will be directly or indirectly dependent on the specific recommendations or views expressed in this report.

Kamco Invest Ratings

Kamco Invest research is based on the analysis of regional and country economics, industries and company fundamentals. Kamco Invest company research reflects a long-term (12-month) target price for a company or stock. The ratings bands are:

* **Outperform:** Target Price represents expected returns >= 10% in the next 12 months

* **Neutral:** Target Price represents expected returns between -10% and +10% in the next 12 months

* **Underperform:** Target Price represents an expected return of <-10% in the next 12 months

In certain circumstances, ratings may differ from those implied by a fair value target using the criteria above. Kamco Invest policy is to maintain up-to-date fair value targets on the companies under its coverage, reflecting any material changes to the analyst's outlook on a company. Share price volatility may cause a stock to move outside the rating range implied by Kamco Invest's fair value target. Analysts may not necessarily change their ratings if this happens, but are expected to disclose the rationale behind their view to Kamco Invest clients.

Any terms and conditions proposed by you which are in addition to or which conflict with this Disclaimer are expressly rejected by Kamco Invest and shall be of no force or effect. The information contained in this document is based on current trade, statistical and other public information we consider reliable. We do not represent or warrant that such information is fair, accurate or complete and it should not be relied upon as such. Kamco Invest has no obligation to update, modify or amend this document or to otherwise notify a recipient thereof in the event that any opinion, forecast or estimate set forth herein, changes or subsequently becomes inaccurate. The publication is provided for informational uses only and is not intended for trading purposes. The information on publications does not give rise to any legally binding obligation and/or agreement, including without limitation any obligation to update such information. You shall be responsible for conducting your own investigation and analysis of the information contained or referred to in this document and of evaluating the merits and risks involved in the securities forming the subject matter of this or other such document. Moreover, the provision of certain data/information in the publication may be subject to the terms and conditions of other agreements to which Kamco Invest is a party.

Nothing in this document should be construed as a solicitation or offer, or recommendation, to acquire or dispose of any investment or to engage in any other transaction, or to provide any investment advice or service. This document is directed at Professional Clients and not Retail Clients within the meaning of CMA rules. Any other persons in receipt of this document must not rely upon or otherwise act upon it. Entities and individuals

'Kamco Investment Company (DIFC) Limited ("Kamco Invest DIFC"), Office 205, Level 2, Gate Village 1, Dubai International Financial Centre, a wholly owned subsidiary of Kamco Investment Company KSC (Public), is regulated by the Dubai Financial Services Authority (DFSA). Kamco Invest DIFC may only undertake the financial services activities that fall within the scope of its existing DFSA licence. The information in this document may be distributed by Kamco Invest DIFC on behalf of Kamco Investment Company KSC (Public). This document is intended for Professional Clients or Market Counterparties only as defined by the DFSA, and no other person should act upon it.

This document may not be distributed in Saudi Arabia except to such persons as are permitted under the Offers of Securities Regulations issued by the Capital Market Authority. The Capital Market Authority does not make any representation as to the accuracy or completeness of this document, and expressly disclaims any liability whatsoever for any loss arising from, or incurred in reliance upon, any part of this document. The recipients of this document hereby should conduct their own due diligence on the accuracy of the information relating to the contents of this document. If you do not understand the contents of this document you should consult an authorized financial advisor.

Risk Warnings

Any prices, valuations or forecasts are indicative and are not intended to predict actual results, which may differ substantially from those reflected. The value of an investment may go up as well as down. The value of and income from any investment may fluctuate from day to day as a result of changes in relevant economic markets (including, without limitation, foreseeable or unforeseeable changes in interest rates, foreign exchange rates, default rates, prepayment rates, political or financial conditions, etc.).

Past performance is not indicative of future results. Any opinions, estimates, valuations or projections (target prices and ratings in particular) are inherently imprecise and a matter of judgment. They are statements of opinion and not of fact, based on current expectations, estimates and projections, and rely on beliefs and assumptions. Actual outcomes and returns may differ materially from what is expressed or forecasted. There are no guarantees of future performance. Certain transactions, including those involving futures, options, and other derivatives, give rise to substantial risk and are not suitable for all investors. This document does not propose to identify or to suggest all of the risks (direct or indirect) which may be associated with the investments and strategies referred to herein.

Conflict of Interest

Kamco Invest and its affiliates provide full investment banking services, and they and their directors, officers and employees, may take positions which conflict with the views expressed in this document. Salespeople, traders, and other professionals of Kamco Invest may provide oral or written market commentary or trading strategies to our clients and our proprietary trading desks that reflect opinions that are contrary to the opinions expressed in this document. Our asset management area, our proprietary trading desks and investing businesses may make investment decisions that are inconsistent with the recommendations or views expressed in this document. Kamco Invest may have or seek investment relationships for which it will receive compensation from the companies that are the subject of this document. Facts and views presented in this document have not been reviewed by, and may not reflect information known to, professionals in other Kamco Invest business areas, including investment banking personnel. United Gulf Bank, Bahrain owns majority of Kamco Invest's shareholding and this ownership may create, or may create the appearance of, conflicts of interest.

No Liability & Warranty

Kamco Invest makes neither implied nor expressed representations or warranties and, to the fullest extent permitted by applicable law, we hereby expressly disclaim any and all express, implied and statutory representations and warranties of any kind, including, without limitation, any warranty as to accuracy, timeliness, completeness, and fitness for a particular purpose and/or non-infringement. Kamco Invest will accept no liability in any event including (without limitation) your reliance on the information contained in this document, any negligence for any damages or loss of any kind, including (without limitation) direct, indirect, incidental, special or consequential damages, expenses or losses arising out of, or in connection with your use or inability to use this document, or in connection with any error, omission, defect, computer virus or system failure, or loss of any profit, goodwill or