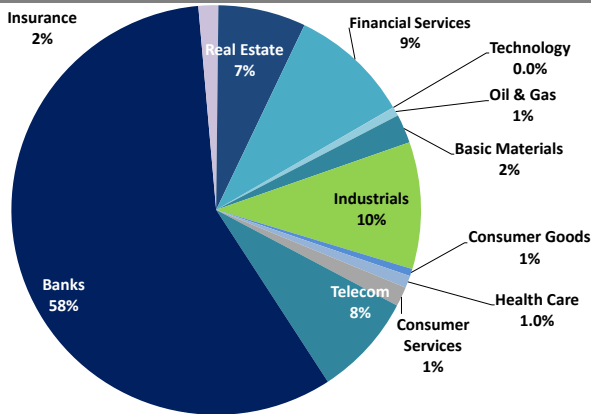


# Boursa Kuwait Daily Report

November 28, 2021

## Sector Weight by Market Cap



## Top 10 Companies by Market Capitalization

Company Name	Market Cap. (Mn KWD)	P/E (X)	ROE* (%)
1- National Bank of Kuwait	7,156.7	24.2	8.9%
2- Kuwait Finance House	6,871.4	35.5	10.3%
3- Ahli United Bank - Bahrain	2,756.6	20.2	10.8%
4- Zain	2,522.7	13.5	16.2%
5- Boubyan Bank	2,502.4	64.6	7.1%
6- Agility (PWC Logistics)	2,114.1	27.6	6.5%
7- Commercial Bank of Kuwait	996.0	55.6	2.3%
8- Mabanee Co.	910.2	19.6	9.3%
9- Gulf Bank	746.8	22.3	5.2%
10- Ahli United Bank - Kuwait	743.3	24.7	6.6%
<b>Total</b>	<b>27,320</b>	<b>25.84</b>	<b>9.0%</b>

\*: ROE is calculated based on TTM 1H-2021 net profit & shareholders' equity as of 30-June-21

## Top Movers and Most Active Stocks

Today's Top % Gainers	Close (KWD)	Change (KWD)	Percent Change
Amar For Finance And Leasing Co.	0.072	0.002	2.7%
Kuwait National Cinema Co.	0.909	0.009	1.0%
Warba Insurance Co.	0.153	0.001	0.7%




Today's Top % Losers	Close (KWD)	Change (KWD)	Percent Change
Jiyad Holding Co.	0.077	(0.016)	(17.2%)
Sanam Real Estate Co.	0.077	(0.014)	(15.4%)
Credit Rating & Collection Co.	0.055	(0.009)	(14.1%)
Al Masaken Intl. Real Estate Dev. Co.	0.045	(0.007)	(13.9%)
Equipment Holding Co.	0.058	(0.009)	(13.3%)

Today's Most Active by Volume	Close (KWD)	Percent Change	Volume (Shares)
GFH Financial Group	0.086	(7.0%)	77,314,008
National Investment Co.	0.217	(6.1%)	32,347,014
Kuwait Finance House	0.814	(2.4%)	22,057,386
National Real Estate Co.	0.211	(5.8%)	18,644,513
Ahli United Bank - Bahrain	0.272	(4.6%)	16,938,091

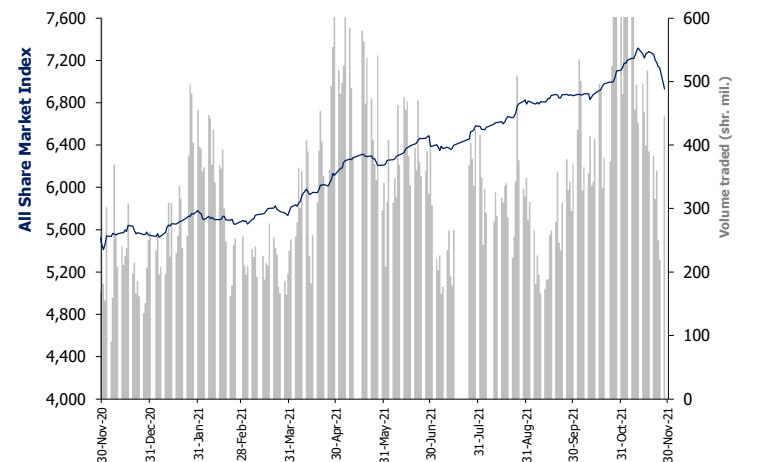
Source: Boursa Kuwait, Kamco Invest Research

## Market Capitalization - Sector Returns

	Market Cap. (KWD Mn)	DTD %	MTD %	YTD %
<b>Boursa Kuwait</b>	<b>41,197.5</b>	<b>(2.8%)</b>	<b>(2.2%)</b>	<b>24.8%</b>
Oil & Gas	290.4	(3.6%)	(4.4%)	3.6%
Basic Materials	924.8	(2.5%)	(5.7%)	15.4%
Industrials	4,103.4	(4.1%)	(4.4%)	29.2%
Consumer Goods	232.7	(0.6%)	(4.8%)	0.3%
Health Care	396.1	0.0%	0.5%	(3.4%)
Consumer Services	634.1	(5.7%)	0.0%	51.2%
Telecommunications	3,303.5	(1.2%)	(2.3%)	(2.3%)
Banks	23,661.5	(2.4%)	(1.1%)	25.8%
Insurance	640.5	(0.4%)	7.3%	49.6%
Real Estate	2,840.8	(4.6%)	(5.0%)	38.3%
Financial Services	3,901.6	(4.0%)	(4.6%)	44.4%
Technology	10.6	0.0%	0.0%	53.4%
Utilities	257.4	-2.1%	-0.8%	-15.5%

Market Breadth		3		138		26
Benchmark Return	Closing	DTD	DTD	MTD	YTD	
	Value	Chg	% Chg	% Chg	% Chg	
Premier Market Index	7,512.80	(207.2)	(2.7%)	(2.3%)	24.2%	
Main 50 Index	5,957.22	(205.5)	(3.3%)	(3.4%)	28.5%	
Main Market Index	5,795.74	(188.1)	(3.1%)	(3.1%)	27.3%	
All Share Market Index	6,928.74	(199.5)	(2.8%)	(2.5%)	24.9%	
Market Cap (KWD Mn)	41,197.50	(1190.3)	(2.8%)	(2.2%)	24.8%	

## Index Performance relative to Volume



## Market Trading Data and Volatility

Trading Indicators	Today's Value	DTD Chg	DTD % Chg	Average Daily YTD 2021	YTD 2020
Volume (Shrs Mn)	445.2	226.1	103.2%	352.9	208.5
Value Traded (KWD Mn)	90.5	52.57	138.7%	55.5	40.5
No. of Trades	20,155	10,906	117.9%	12,680	9,467

Today's Most Active by Value	Close (KWD)	Percent Change	Value (KWD)
Kuwait Finance House	0.814	(2.4%)	17,822,745
National Investment Co.	0.217	(6.1%)	7,004,520
GFH Financial Group	0.086	(7.0%)	6,631,867
Agility (PWC Logistics)	0.948	(4.9%)	5,830,883
National Bank of Kuwait	0.995	(2.2%)	5,469,223

## Boursa Kuwait - Premier Market

Sunday, November 28, 2021

	Premier Market Stocks	Closing Price			Market Capitalization			Valuation Multiples				ROE	YTD-21 Price Return	YTD-21 Trading Indicators	
		KWD	DTD Chg. (KWD)	D-T-D Return	KWD Mn	Weight in Premier Index	Weight in Boursa Kuwait	P/E (X)	P/BV (X)	Yield	Beta			Volume (Mn Shrs)	Value (KWD Mn)
▼	National Bank of Kuwait	0.995	(0.022)	(2.2%)	7,157	23.2%	17.4%	24.2	2.14	1.9%	1.26	8.9%	24.4%	1,106.73	973.37
▼	Gulf Bank	0.245	(0.009)	(3.5%)	747	2.4%	1.8%	22.3	1.16	1.9%	1.13	5.2%	11.9%	2,343.67	543.14
▼	Kuwait International Bank	0.211	(0.009)	(4.1%)	239	0.8%	0.6%	NM	0.92	0.0%	1.01	0.8%	1.4%	1,131.91	247.69
▼	Burgan Bank	0.220	(0.006)	(2.7%)	689	2.2%	1.7%	19.7	1.02	1.9%	1.05	5.1%	23.2%	563.40	126.50
▼	Kuwait Finance House	0.814	(0.020)	(2.4%)	6,871	22.3%	16.7%	35.5	3.67	1.1%	1.40	10.3%	32.3%	1,406.58	1,075.38
▼	Boubyan Bank	0.787	(0.008)	(1.0%)	2,502	8.1%	6.1%	64.6	4.62	0.0%	1.05	7.1%	45.5%	265.72	178.65
▼	National Investments Co	0.217	(0.014)	(6.1%)	190	0.6%	0.5%	7.8	1.00	4.6%	1.25	12.8%	60.7%	500.44	93.79
▼	Kuwait Projects Co. (Holding)	0.145	(0.006)	(4.0%)	290	0.9%	0.7%	NM	1.40	3.4%	0.59	0.3%	(8.8%)	380.22	57.55
▼	Al Imtiaz Investment Group	0.117	(0.006)	(4.9%)	133	0.4%	0.3%	NM	0.71	0.0%	0.99	NM	4.5%	1,220.78	151.49
▼	Kuwait Real Estate Co.	0.170	(0.010)	(5.6%)	161	0.5%	0.4%	32.9	1.25	0.0%	0.98	3.8%	63.8%	2,220.07	312.63
▼	Mabane Co.	0.777	(0.023)	(2.9%)	910	3.0%	2.2%	19.6	1.82	0.7%	1.11	9.3%	25.4%	149.27	109.14
▼	National Industries Group (Holding)	0.265	(0.014)	(5.0%)	378	1.2%	0.9%	6.8	0.99	0.0%	1.44	14.5%	50.6%	1,556.77	355.35
▼	Gulf Cable and Electrical Industries	0.914	(0.041)	(4.3%)	192	0.6%	0.5%	34.3	1.03	5.5%	0.94	3.0%	21.1%	63.04	51.85
▼	Boubyan Petrochemical Co.	0.865	(0.035)	(3.9%)	463	1.5%	1.1%	24.6	2.03	6.2%	0.73	8.3%	35.2%	105.54	90.90
▼	Qurain Petrochemicals Industries Co.	0.356	(0.004)	(1.1%)	391	1.3%	0.9%	28.6	0.94	4.3%	0.75	3.3%	5.3%	143.30	54.84
▼	Agility Public Warehousing Co.	0.948	(0.049)	(4.9%)	2,114	6.9%	5.1%	27.6	1.81	0.9%	1.49	6.5%	54.3%	711.52	641.30
▼	Mobile Telecommunications Co.	0.583	(0.007)	(1.2%)	2,523	8.2%	6.1%	13.5	2.18	3.4%	1.35	16.2%	(3.8%)	692.25	419.94
▼	Human Soft Holding Co.	3.220	(0.030)	(0.9%)	394	1.3%	1.0%	5.9	3.71	12.4%	0.49	63.0%	(15.2%)	53.59	191.69
▼	ALAFCO Aviation Lease and Finance Co.	0.230	(0.014)	(5.7%)	219	0.7%	0.5%	NM	0.74	0.0%	0.87	NM	6.5%	493.64	111.82
▼	Ahli United Bank (B.S.C)	0.272	(0.013)	(4.6%)	2,757	9.0%	6.7%	20.2	2.18	1.3%	1.13	10.8%	24.7%	3,445.30	819.85
▼	Warba Bank	0.277	(0.010)	(3.5%)	554	1.8%	1.3%	20.9	2.79	0.0%	1.00	13.4%	17.4%	677.72	177.03
▼	Mezzan Holding Co.	0.598	(0.004)	(0.7%)	190	0.6%	0.5%	18.9	1.71	2.9%	0.44	9.1%	0.3%	104.41	64.20
▼	Integrated holding Co.	0.376	(0.009)	(2.3%)	95	0.3%	0.2%	NM	1.57	0.0%	0.48	NM	2.7%	292.26	114.24
▼	Shamal Az-Zour Al-Oula Power and Water	0.234	(0.005)	(2.1%)	257	0.8%	0.6%	20.2	4.90	5.1%	0.66	24.2%	(15.5%)	424.97	105.93
▼	Boursa Kuwait Securities Co.	1.865	(0.028)	(1.5%)	374	1.2%	0.9%	13.4	7.12	2.1%	0.74	53.2%	69.5%	93.10	129.28
Subtotal- Premier Market Stocks		7,512.80	(207.17)	-2.7%	30,790	100%	75%	23.8	2.16	1.75%		9.1%	24.2%	20,146.20	7,197.57
Remaining of the Market					10,407		25%	52.6	1.11	1.30%		2.1%		57,836.49	5,067.24

Source: Kamco Invest Research

**Boursa Kuwait Daily Bulletin**

Sunday, November 28, 2021

Company	Reuters Ticker	Valuation Multiples				Price (KWD)		MKT Cap (KWD Mn.)	52 Weeks High (KWD)	52 Weeks Low (KWD)	YTD-21 Return #	Daily Trading Data		YTD-21 Capital Turnover	ROE
		Trailing P/E (X)	Trailing P/BV (X)	Dividend Yield	Beta	Closing	DTD Change					Volume (Shrs.)	Value (KWD)		
▼ Senergy Holding Co.	SENE.KW	NM	1.02	0.00%	1.13	0.050	(0.003)	10.0	0.063	0.021	135.8%	1,414,107	70,868	178.9%	NM
▼ Independent Petroleum Group	IPGK.KW	15.6	1.11	4.88%	0.27	0.590	(0.022)	111.2	0.669	0.447	24.2%	148,018	87,806	1.9%	7.2%
= National Petroleum Services Co.	NAPS.KW	14.4	2.22	7.66%	0.20	0.810	0.000	81.0	1.150	0.709	(22.8%)	0	0	1.4%	15.4%
▼ The Energy House Co.	ENER.KW	23.7	2.03	0.00%	0.97	0.055	(0.002)	41.3	0.086	0.025	93.7%	1,025,771	54,321	9.7%	8.6%
▼ Gulf Petroleum Investment	GPIK.KW	NM	0.36	0.00%	1.10	0.026	(0.003)	11.8	0.031	0.018	34.2%	11,176,393	294,106	394.9%	NM
▼ Burgan Co. for Drilling, Tdg. & Maint. *	ABAR.KW	13.9	0.53	1.99%	0.02	0.145	(0.014)	35.2	0.201	0.123	(6.5%)	572,391	85,355	150.3%	3.8%
<b>Oil &amp; Gas</b>		<b>29.4</b>	<b>1.09</b>	<b>4.25%</b>				<b>290.4</b>			<b>3.6%</b>	<b>14,336,680</b>	<b>592,456</b>		<b>3.7%</b>
▼ Kuwait Foundry Co.	KFDC.KW	NM	1.78	2.00%	0.63	0.350	(0.010)	25.3	0.430	0.258	30.6%	25,696	9,049	14.0%	NM
▼ Boubyan Petrochemicals Co.*	BPCC.KW	24.6	2.03	6.18%	0.73	0.865	(0.035)	462.6	0.987	0.625	35.2%	613,898	530,738	19.7%	8.3%
= Al Kout for Industrial Projects Co.	ALKK.KW	NM	1.88	4.43%	0.03	0.451	0.000	45.5	0.675	0.449	(33.2%)	0	0	0.0%	NM
▼ Qurain Petrochemical Industries Co. *	ALQK.KW	28.6	0.94	4.25%	0.75	0.356	(0.004)	391.3	0.447	0.334	5.3%	799,377	280,060	13.0%	3.3%
<b>Basic Materials</b>		<b>30.1</b>	<b>1.35</b>	<b>5.17%</b>				<b>924.8</b>			<b>15.4%</b>	<b>1,438,971</b>	<b>819,847</b>		<b>4.5%</b>
▼ Specialities Group Holding Co.	SPEC.KW	51.0	0.71	0.00%	0.45	0.129	(0.010)	21.3	0.169	0.073	64.8%	2,777,097	357,785	304.0%	1.4%
▼ Kuwait Cement Co.	KCEM.KW	NM	0.89	0.00%	0.53	0.233	(0.012)	170.9	0.266	0.215	0.9%	158,185	36,949	9.3%	NM
▼ Gulf Cable & Electrical Ind. Co.	CABL.KW	34.3	1.03	5.47%	0.94	0.914	(0.041)	191.9	1.011	0.728	21.1%	195,743	179,771	30.0%	3.0%
▼ Heavy Eng'g Ind. & Shipbuilding Co.	SHIP.KW	11.6	1.25	4.42%	0.59	0.452	(0.012)	81.5	0.524	0.392	13.9%	577,405	261,538	80.1%	10.7%
▼ Kuwait Portland Cement Co.	PCEM.KW	13.1	1.41	4.09%	0.46	0.979	(0.011)	98.1	1.050	0.766	24.7%	73,924	71,011	15.2%	10.7%
= Shuaiba Industrial Co.	PAPE.KW	17.7	1.29	4.29%	0.13	0.230	0.000	23.2	0.230	0.145	48.4%	0	0	5.0%	7.3%
▼ Metal & Recycling Co.	MRCK.KW	NM	1.52	0.00%	0.21	0.102	(0.005)	12.0	0.196	0.051	92.1%	30,450	2,984	14.6%	NM
▼ ACICO Industries Co.	ACIC.KW	NM	0.51	0.00%	0.39	0.128	(0.006)	38.6	0.146	0.082	42.4%	1,627,577	210,532	75.2%	NM
= Hilal Cement Co.	HCCK.KW	NM	0.74	0.00%	0.10	0.141	0.000	7.1	0.180	0.069	54.9%	0	0	2.3%	NM
▼ National Industries Co.	NIBM.KW	22.2	0.80	0.00%	0.17	0.192	(0.003)	71.5	0.218	0.150	23.1%	73,570	14,180	4.4%	3.6%
▼ Equipment Holding Co.	EQUI.KW	NM	0.85	0.00%	1.04	0.058	(0.009)	4.6	0.079	0.027	95.9%	2,161,479	126,906	236.4%	NM
▼ National Co. for Consumer Industries	NCCI.KW	NM	1.46	0.00%	NA	0.116	(0.015)	10.4	0.198	0.038	137.2%	2,425,110	285,623	696.0%	NM
▼ Salbookh Trading Co.	SALB.KW	NM	0.90	0.00%	0.60	0.048	(0.003)	5.0	0.072	0.035	27.1%	792,750	37,208	238.2%	NM
▼ Agility (PWC Logistics)	AGLT.KW	27.6	1.81	0.92%	1.49	0.948	(0.049)	2,114.1	1.090	0.592	54.3%	6,105,402	5,830,883	31.9%	6.5%
▼ Educational Holding Group*	EDUK.KW	7.5	1.47	0.00%	0.48	0.580	(0.018)	55.3	0.900	0.433	76.8%	122,610	71,595	21.4%	19.5%
▼ National Cleaning Co.	CLEA.KW	NM	0.44	0.00%	0.80	0.059	(0.003)	14.7	0.080	0.045	10.3%	985,508	57,732	117.8%	NM
▼ Kuwait & Gulf Link Transport Co.	KGLK.KW	NM	0.45	0.00%	0.79	0.065	(0.006)	18.8	0.106	0.044	22.7%	3,641,100	237,981	72.1%	NM
▼ Kuwait Co. For Process Plant Const. & Cont.	KCPC.KW	7.7	1.88	8.48%	0.48	0.490	(0.010)	56.8	0.629	0.367	27.7%	17,823	8,617	25.5%	24.3%
▼ Humansoft Holding Co.	HUMN.KW	5.9	3.71	12.36%	0.49	3.220	(0.030)	393.6	4.030	3.200	(15.2%)	256,539	820,411	43.8%	63.0%
▼ Gulf Franchising Co.	GFCI.KW	6.3	1.56	0.00%	NA	0.084	(0.004)	3.4	0.115	0.032	40.0%	150	13	4.2%	24.6%
= National Shooting Co.	SHOOTING.KW	NM	0.71	0.00%	1.20	0.039	0.000	10.9	0.043	0.019	108.6%	0	0	98.6%	NM
▼ Combined Group Contracting Co.	CGCK.KW	NM	1.49	1.78%	0.65	0.337	(0.016)	57.8	0.399	0.196	67.7%	459,904	152,541	93.3%	NM
▼ United Projects Group	UPAC.KW	NM	1.06	0.00%	0.06	0.280	(0.007)	107.1	0.365	0.186	(3.4%)	13,050	3,518	8.8%	0.9%
▼ ALAFCO Aviation Lease & Finance Co.*	ALAF.KW	NM	0.74	0.00%	0.87	0.230	(0.014)	219.0	0.256	0.198	6.5%	4,244,000	979,178	51.8%	NM
▼ Mubarrad Holding Co.	MBRD.KW	27.7	0.87	0.00%	0.96	0.109	(0.008)	17.8	0.130	0.063	52.4%	1,734,050	189,482	253.5%	3.1%
= KGL Logistics Co.	LOGK.KW	NM	0.25	0.00%	0.76	0.032	0.000	23.4	0.034	0.027	12.8%	0	0	21.7%	NM
▼ Integrated holding Co.	INTEGRATED.KW	NM	1.57	0.00%	0.48	0.376	(0.009)	95.1	0.399	0.310	2.7%	2,493,832	929,111	115.5%	NM
= Umm Al-Qaiwain General Investments Co.	QIC.KW	9.9	0.67	5.05%	0.18	0.099	0.000	35.9	0.099	0.063	32.0%	0	0	1.2%	6.8%
▼ Fujairah Cement Industries Co.	FCEM.KW	NM	0.24	0.00%	0.48	0.049	(0.003)	17.5	0.069	0.028	43.9%	805,813	39,643	22.0%	NM
▼ Ras-Al-Khaimah for White Cement Co.	RKWC.KW	29.6	1.08	3.70%	0.14	0.135	(0.004)	67.5	0.175	0.061	107.7%	50,000	6,750	4.8%	3.7%
▼ Jassim Transport & Stevedoring Co.	JTC.KW	25.4	1.41	5.13%	NA	0.390	(0.013)	58.5	0.450	0.395	0.0%	199,550	78,510	26.4%	5.5%
<b>Industrials</b>		<b>31.6</b>	<b>1.35</b>	<b>2.45%</b>				<b>4,103.4</b>			<b>29.2%</b>	<b>32,022,621.0</b>	<b>10,990,454</b>		<b>4.3%</b>

# Boursa Kuwait Daily Bulletin

Sunday, November 28, 2021

Company	Reuters Ticker	Valuation Multiples				Price (KWD)		MKT Cap (KWD Mn.)	52 Weeks High (KWD)	52 Weeks Low (KWD)	YTD-21 Return #	Daily Trading Data		YTD-21 Capital Turnover	ROE
		Trailing P/E (X)	Trailing P/BV (X)	Dividend Yield	Beta	Closing	DTD Change					Volume (Shrs.)	Value (KWD)		
Palms Agro Production Co.	PAPK.KW	NM	0.65	0.00%	0.27	0.073	0.000	3.8	0.090	0.050	13.6%	0	0	2.2%	NM
Livestock Transport & Trading Co.	CATT.KW	NM	1.00	0.00%	0.26	0.180	(0.001)	39.0	0.210	0.177	2.3%	1,480	266	11.5%	NM
Mezzan Holding Co.	MEZZ.KW	18.9	1.71	2.90%	0.44	0.598	(0.004)	189.9	0.679	0.554	0.3%	563,477	336,242	32.9%	9.1%
<b>Consumer Goods</b>		<b>34.3</b>	<b>1.49</b>	<b>2.36%</b>				<b>232.7</b>			<b>0.3%</b>	<b>564,957</b>	<b>336,509</b>		<b>4.4%</b>
Advanced Technology Co.	ATCK.KW	13.6	1.25	2.87%	0.00	0.523	0.000	78.5	0.600	0.401	(8.2%)	0	0	1.0%	9.2%
Yiaco Medical Co.	YIAC.KW	NM	4.58	0.00%	NA	0.448	0.000	7.7	0.825	0.403	(46.7%)	0	0	1.4%	NM
Al-Maidan Clinic For Oral Health Services Co.	MIDAN.KW	31.6	19.05	0.81%	NA	1.240	0.000	310.0	1.240	1.200	0.0%	0	0	0.1%	60.3%
<b>Health Care</b>		<b>25.7</b>	<b>4.91</b>	<b>1.20%</b>				<b>396.1</b>			<b>(3.4%)</b>	<b>0</b>	<b>0</b>		<b>19.1%</b>
Kuwait National Cinema Co.	KCIN.KW	NM	1.36	0.00%	0.30	0.909	0.009	91.9	0.990	0.700	21.2%	20	18	1.4%	NM
Kuwait Hotels Co.	KHOT.KW	10.8	1.27	0.00%	NA	0.095	(0.005)	5.5	0.113	0.050	59.7%	170	16	20.1%	11.8%
Sultan Center Food Products Co.	SCFK.KW	45.0	1.33	0.00%	0.43	0.214	(0.007)	61.9	0.269	0.097	114.0%	865,677	183,789	68.5%	3.0%
IFA Hotels & Resorts Co.*	IFAH.KW	NM	7.68	0.00%	0.33	0.055	(0.008)	35.1	0.073	0.019	183.1%	7,003,593	403,401	140.1%	NM
Oula Fuel Marketing Co.	OULA.KW	13.1	0.90	3.20%	0.48	0.154	(0.007)	62.3	0.178	0.114	25.2%	520,170	79,829	24.0%	6.9%
Kuwait Resorts Co.	MUNK.KW	28.4	0.69	2.08%	0.71	0.096	(0.005)	20.2	0.112	0.060	52.1%	1,653,315	160,180	203.8%	2.4%
Jazeera Airways Co.	JAZK.KW	NM	170.89	0.00%	0.73	1.120	(0.080)	224.0	1.345	0.588	53.4%	853,660	963,170	51.7%	NM
Soor Fuel Marketing Co.	SOOR.KW	16.6	0.91	3.42%	0.49	0.145	(0.013)	58.7	0.175	0.116	18.9%	218,284	33,031	11.7%	5.5%
Future Kid Entertainment and R.E Co.	KIDK.KW	NM	0.80	0.00%	0.04	0.079	(0.004)	9.1	0.122	0.064	(7.6%)	235,552	18,282	186.0%	NM
Jiyad Holding Co	JIYAD.KW	NM	0.73	0.00%	0.68	0.077	(0.016)	26.8	0.099	0.036	72.9%	377,902	30,699	41.2%	NM
Al Eid Food Co.	ALEID.KW	20.8	1.95	1.56%	NA	0.267	(0.006)	38.6	0.310	0.069	286.0%	330,137	88,451	121.2%	9.4%
<b>Consumer Services</b>		<b>NM</b>	<b>1.79</b>	<b>0.79%</b>				<b>634.1</b>			<b>51.2%</b>	<b>12,058,480</b>	<b>1,960,867</b>		<b>NM</b>
Zain	ZAIN.KW	13.5	2.18	3.43%	1.35	0.583	(0.007)	2,522.7	0.641	0.581	(3.8%)	2,954,001	1,729,899	16.0%	16.2%
National Mobile Telecom Co.	OORE.KW	37.8	0.61	2.29%	0.47	0.652	(0.013)	328.6	0.711	0.620	4.0%	103,240	67,225	1.9%	1.6%
AAN digital services Co.	AAN.KW	NM	0.66	0.00%	1.33	0.018	(0.001)	15.4	0.020	0.011	42.7%	9,230,412	164,612	340.6%	NM
Kuwait Telecommunication Co.	STC.KW	13.1	2.05	7.02%	0.55	0.855	(0.005)	427.0	0.970	0.822	0.4%	284,344	243,120	5.1%	15.7%
Hayat Communications Co.	HAYK.KW	NM	0.91	0.00%	1.14	0.106	(0.005)	9.8	0.124	0.051	89.3%	204,920	21,018	154.7%	NM
<b>Telecommunications</b>		<b>14.5</b>	<b>1.71</b>	<b>3.75%</b>				<b>3,303.5</b>			<b>(2.3%)</b>	<b>12,776,917</b>	<b>2,225,873</b>		<b>11.8%</b>
National Bank of Kuwait	NBKK.KW	24.2	2.14	1.89%	1.26	0.995	(0.022)	7,156.7	1.057	0.792	24.4%	5,483,968	5,469,223	15.4%	8.9%
Gulf Bank	GBKK.KW	22.3	1.16	1.94%	1.13	0.245	(0.009)	746.8	0.265	0.205	11.9%	6,110,930	1,496,197	76.9%	5.2%
Commercial Bank of Kuwait	CBKK.KW	55.6	1.30	0.00%	0.37	0.500	0.000	996.0	0.605	0.485	0.0%	6,008	3,004	3.6%	2.3%
Ahli Bank of Kuwait	ABKK.KW	NM	0.80	0.00%	0.66	0.239	(0.007)	406.3	0.264	0.186	20.1%	333,521	78,361	12.7%	NM
Ahli United Bank - Kuwait	BKME.KW	24.7	1.62	0.00%	0.85	0.312	(0.008)	743.3	0.332	0.258	18.8%	1,204,570	375,959	5.5%	6.6%
Kuwait International Bank	KIBK.KW	NM	0.92	0.00%	1.01	0.211	(0.009)	239.0	0.233	0.198	1.4%	12,953,601	2,733,069	99.9%	0.8%
Burgan Bank	BURG.KW	19.7	1.02	1.90%	1.05	0.220	(0.006)	688.9	0.240	0.195	23.2%	4,762,125	1,053,461	18.0%	5.1%
Kuwait Finance House	KFH.KW	35.5	3.67	1.11%	1.40	0.814	(0.020)	6,871.4	0.849	0.611	32.3%	22,057,386	17,822,745	16.7%	10.3%
Boubyan Bank	BOUK.KW	64.6	4.62	0.00%	1.05	0.787	(0.008)	2,502.4	0.835	0.516	45.5%	1,130,228	888,989	8.4%	7.1%
Warba Bank	WARB.KW	20.9	2.79	0.00%	1.00	0.277	(0.010)	554.0	0.298	0.210	17.4%	5,133,197	1,178,037	33.9%	13.4%
Ahli United Bank - Bahrain	AUBK.KW	20.2	2.18	1.34%	1.13	0.272	(0.013)	2,756.6	0.297	0.204	24.7%	16,938,091	4,653,149	34.0%	10.8%
<b>Banks</b>		<b>31.1</b>	<b>2.25</b>	<b>1.17%</b>				<b>23,661.5</b>			<b>25.8%</b>	<b>76,113,625</b>	<b>35,752,194</b>		<b>7.2%</b>



# Boursa Kuwait Daily Bulletin

Sunday, November 28, 2021

Company	Reuters Ticker	Valuation Multiples				Price (KWD)		MKT Cap (KWD Mn.)	52 Weeks High (KWD)	52 Weeks Low (KWD)	YTD-21 Return #	Daily Trading Data		YTD-21 Capital Turnover	ROE
		Trailing P/E (X)	Trailing P/BV (X)	Dividend Yield	Beta	Closing	DTD Change					Volume (Shrs.)	Value (KWD)		
▼ Kuwait Insurance Co.	KINS.KW	7.2	0.71	7.44%	0.01	0.384	(0.009)	74.5	0.459	0.360	(0.3%)	191,705	73,462	12.5%	9.9%
= Gulf Insurance Group	GINS.KW	17.3	2.44	0.00%	0.07	1.110	0.000	315.9	1.200	0.536	37.5%	54,322	60,197	2.3%	14.1%
= Ahleiah Insurance Co.	AINS.KW	8.1	0.88	4.85%	0.13	0.483	0.000	106.5	0.561	0.419	7.9%	0	0	6.0%	10.8%
▲ Warba Insurance Co.	WINS.KW	10.9	0.71	4.72%	0.36	0.153	0.001	28.2	0.176	0.077	89.4%	180,985	27,034	98.8%	6.5%
= Kuwait Reinsurance Co.	KWRE.KW	13.5	1.26	1.34%	0.14	0.345	0.000	76.0	0.527	0.212	78.3%	0	0	0.1%	9.4%
▼ First Takaful Insurance Co.	FTIK.KW	NM	0.75	0.00%	0.36	0.056	(0.006)	6.0	0.081	0.034	51.4%	40,724	2,341	9.1%	NM
▼ Wethaq Takaful Insurance Co.	WETH.KW	27.4	0.51	0.00%	0.47	0.056	(0.006)	6.1	0.102	0.020	173.0%	981,449	55,993	332.1%	1.8%
= Bahrain Kuwait Insurance Co.	BKIK.KW	8.7	0.85	7.85%	0.02	0.191	0.000	27.3	0.000	0.000	(4.5%)	0	0	0.0%	9.7%
<b>Insurance</b>		<b>12.2</b>	<b>1.26</b>	<b>2.37%</b>				<b>640.5</b>			<b>49.6%</b>	<b>1,449,185</b>	<b>219,027</b>		<b>10.3%</b>
▼ Sokouk Holding Co.	SHCK.KW	NM	0.74	0.00%	1.16	0.031	(0.003)	18.4	0.038	0.022	33.0%	2,279,540	71,038	109.4%	NM
▼ Kuwait Real Estate Co.	KREK.KW	32.9	1.25	0.00%	0.98	0.170	(0.010)	161.1	0.193	0.100	63.8%	6,835,419	1,173,702	234.3%	3.8%
▼ United Real Estate Co.	UREK.KW	NM	0.52	0.00%	0.42	0.077	(0.003)	91.5	0.085	0.043	63.8%	338,800	26,281	11.9%	NM
▼ National Real Estate Co.	NREK.KW	34.8	1.26	0.00%	1.19	0.211	(0.013)	348.4	0.242	0.071	223.2%	18,644,513	3,980,412	142.7%	3.6%
▼ Salhia Real Estate Co.	SREK.KW	64.2	1.74	5.52%	0.35	0.524	(0.024)	268.7	0.607	0.501	4.2%	876,247	456,068	15.8%	2.7%
▼ Tamdeen Real Estate Co.	TAMK.KW	NM	0.83	0.00%	0.13	0.328	(0.006)	141.7	0.374	0.235	21.5%	94,415	30,534	6.3%	NM
▼ Ajial Real Estate Entertainment Co.	AREC.KW	20.9	0.46	0.00%	0.50	0.307	(0.010)	59.7	0.345	0.170	67.8%	340,046	105,246	15.8%	2.2%
▼ Al Massaleh Real Estate Co.	MREC.KW	NM	0.58	0.00%	0.30	0.050	(0.005)	11.7	0.085	0.030	45.0%	44,188	2,277	22.9%	NM
▼ Arab Real Estate Co.	ARAB.KW	17.4	0.42	0.00%	1.21	0.043	(0.003)	21.9	0.052	0.025	66.9%	838,079	35,208	107.0%	2.4%
▼ AL-Enma'a Real Estate Co.*	ENMA.KW	NM	0.80	0.00%	0.68	0.078	(0.003)	35.1	0.091	0.047	61.3%	2,011,116	151,541	114.0%	0.4%
▼ Mabanee Co.	MABK.KW	19.6	1.82	0.73%	1.11	0.777	(0.023)	910.2	0.868	0.611	25.4%	2,097,096	1,616,954	12.7%	9.3%
▼ Injazzat Real Estate Development Co.	INJA.KW	NM	0.66	0.00%	0.21	0.101	(0.005)	34.9	0.113	0.067	35.6%	185,350	18,153	120.6%	0.6%
▼ Investors Holding Group Co.	INVK.KW	NM	0.71	0.00%	1.21	0.014	(0.001)	8.9	0.020	0.013	(18.3%)	9,872,133	143,401	307.4%	NM
▼ The Commercial Real Estate Co.	TIJK.KW	56.7	0.81	2.33%	0.58	0.123	(0.009)	226.4	0.140	0.091	11.2%	2,803,352	349,552	48.8%	1.4%
▼ Sanam Real Estate Co.	SANK.KW	NM	1.01	0.00%	0.42	0.077	(0.014)	9.4	0.094	0.028	122.3%	492,236	37,299	72.9%	NM
▼ A'ayan Real Estate Co.	AYRE.KW	NM	0.63	0.00%	0.60	0.089	(0.007)	37.0	0.116	0.057	53.3%	3,037,434	270,344	135.6%	NM
▼ Aqar Real Estate Investment Co.	AQAR.KW	NM	0.73	0.00%	NA	0.078	(0.006)	19.1	0.098	0.058	31.9%	768,388	60,022	103.0%	NM
▼ Kuwait Real Estate Holding Co.	ALAQ.KW	10.1	0.89	0.00%	0.53	0.049	(0.004)	9.3	0.059	0.024	94.0%	305,061	14,991	62.5%	8.9%
▼ MAZAYA Holding Co.	MAZA.KW	NM	0.76	0.00%	1.00	0.072	(0.006)	49.6	0.122	0.056	26.0%	8,022,584	584,805	404.0%	NM
▼ Tijara Real Estate & Investment Co.	TIJA.KW	44.4	0.56	0.00%	0.33	0.060	(0.004)	22.1	0.073	0.042	41.9%	1,794,097	106,716	215.1%	1.3%
▼ Al TAMEER Real Estate Investment Co.	AMAR.KW	21.3	0.64	0.00%	0.99	0.041	(0.006)	9.8	0.054	0.018	104.5%	3,740,899	155,296	264.3%	3.0%
▼ Arkan Al-Kuwait Real Estate Co. *	ARKK.KW	20.1	1.00	2.99%	0.26	0.134	(0.012)	33.7	0.152	0.086	58.0%	26,000	3,614	15.3%	5.0%
▼ Al-Argan International Real Estate Co.	ARGK.KW	NM	0.37	0.00%	0.39	0.107	(0.005)	28.4	0.124	0.091	(2.7%)	58,500	6,325	1.4%	NM
▼ Munshaat Real Estate Projects Co.	MUNS.KW	NM	2.30	0.00%	0.63	0.065	(0.004)	20.9	0.121	0.045	(7.7%)	20,103	1,266	11.8%	NM
▼ First Dubai For Real Estate Development	FIRST.KW	76.0	0.95	0.00%	1.46	0.070	(0.007)	70.0	0.088	0.040	70.7%	3,526,842	250,412	51.1%	1.2%
▼ Kuwait Business Town Real Estate Co.	KBTk.KW	NM	0.82	0.00%	1.10	0.086	(0.003)	51.8	0.104	0.038	116.7%	630,750	53,367	94.1%	NM
= Real Estate Asset Management Co.	REAM.KW	NM	0.69	0.00%	0.09	0.090	0.000	9.9	0.000	0.000	0.0%	0	0	0.0%	NM
▼ MENA Real Estate Co. *	MENK.KW	NM	0.49	0.00%	1.00	0.057	(0.007)	7.8	0.105	0.027	104.0%	5,951,604	341,042	661.2%	NM
= Al Mudon International Real Estate Co.	ALMK.KW	NM	0.17	0.00%	0.82	0.021	0.000	2.1	0.027	0.019	14.4%	0	0	110.8%	NM
= Real Estate Trade Centers Co.	MARA.KW	NM	0.53	0.00%	0.39	0.086	0.000	12.9	0.123	0.027	211.6%	4,180	352	30.3%	NM
▼ Kuwait Remal Real Estate Co.	REMA.KW	NM	0.71	0.00%	0.88	0.018	(0.001)	5.6	0.028	0.016	(9.4%)	2,383,955	41,693	119.5%	NM
▼ Mashaer Holding Co.	MASHAER.KW	NM	0.74	0.00%	0.54	0.070	(0.005)	12.5	0.086	0.056	19.3%	385,596	26,532	50.9%	NM
= Ajwan Gulf Real Estate Co.	AJWN.KW	NM	0.35	0.00%	0.55	0.011	0.000	2.2	0.000	0.000	0.0%	0	0	0.0%	NM
▼ Al Masaken Intl. Real Estate Dev. Co.	MASKN.KW	NM	0.69	0.00%	0.19	0.045	(0.007)	4.5	0.069	0.025	80.6%	1,659,671	75,877	540.9%	NM
▼ Dalqan Real Estate Co.	DALQ.KW	NM	1.73	0.00%	NA	0.234	(0.009)	11.6	0.300	0.198	(14.6%)	22,200	5,141	45.3%	0.6%
= Dar Al Thuraya Real Estate Co.	THURY.KW	29.8	0.90	0.00%	NA	0.099	0.000	14.5	0.128	0.046	55.8%	0	0	4.0%	3.0%
▼ Osos Holding Group Co.	OSOS.KW	14.0	1.05	6.09%	0.29	0.115	(0.005)	12.1	0.131	0.083	27.8%	410,270	47,011	71.1%	7.5%
▼ KFH Capital REIT	BAITAKREIT.KW	NA	NA	1.45%	NA	1.279	(0.020)	30.2	1.311	1.018	25.3%	32,467	41,619	13.7%	NA
▼ Land United Real Estate Co.	LAND.KW	NM	0.88	0.00%	NA	0.104	(0.006)	15.6	0.200	0.095	(19.4%)	5,207,189	533,669	60.9%	NM
<b>Real Estate</b>		<b>NM</b>	<b>1.05</b>	<b>1.02%</b>				<b>2,840.8</b>			<b>38.3%</b>	<b>85,740,320</b>	<b>10,817,760</b>		<b>NM</b>

**Boursa Kuwait Daily Bulletin**

Sunday, November 28, 2021

Company	Reuters Ticker	Valuation Multiples				Price (KWD)		MKT Cap (KWD Mn.)	52 Weeks High (KWD)	52 Weeks Low (KWD)	YTD-21 Return #	Daily Trading Data		YTD-21 Capital Turnover	ROE
		Trailing P/E (X)	Trailing P/BV (X)	Dividend Yield	Beta	Closing	DTD Change					Volume (Shrs.)	Value (KWD)		
▼ Kuwait Investment Co.	KINV.KW	5.9	1.26	0.00%	0.75	0.273	(0.008)	150.5	0.317	0.119	123.8%	37,215	10,029	66.4%	21.3%
▼ Commercial Facilities Co.	FACI.KW	5.6	0.71	4.62%	0.53	0.205	(0.003)	110.0	0.220	0.168	7.9%	150,991	30,336	13.2%	12.6%
▼ Int'l Financial Advisors Co.	IFIN.KW	1.4	1.08	0.00%	1.26	0.113	(0.006)	30.1	0.145	0.059	89.0%	2,282,982	255,496	583.5%	75.6%
▼ National Investment Co.	NINV.KW	7.8	1.00	4.62%	1.25	0.217	(0.014)	190.1	0.251	0.128	60.7%	32,347,014	7,004,520	57.1%	12.8%
▼ Kuwait Projects Co.(Holding)	KPRO.KW	NM	1.40	3.39%	0.59	0.145	(0.006)	290.0	0.170	0.140	(8.8%)	1,755,767	253,816	19.0%	0.3%
▼ Coast Invest. & Development Co.	COAS.KW	NM	1.08	0.00%	1.31	0.110	(0.009)	51.2	0.127	0.050	126.8%	6,553,264	720,480	156.2%	NM
▼ The Securities House Co.	SECH.KW	NM	0.97	0.00%	1.15	0.098	(0.006)	44.1	0.117	0.052	130.0%	5,128,124	501,362	405.4%	NM
▼ Arzan Financial Group For Fin. & Invest.	ARZA.KW	49.2	1.19	0.00%	1.02	0.160	(0.005)	128.5	0.183	0.055	186.7%	1,555,407	247,232	315.1%	2.4%
▼ Kuwait Financial Centre	MARKZ.KW	4.3	0.80	0.00%	0.79	0.168	(0.009)	80.8	0.207	0.080	101.4%	3,730,613	629,740	113.7%	18.5%
= Kuwait & M.E. Financial Inv. Co.	KMEF.KW	12.0	1.20	0.00%	0.58	0.135	0.000	29.7	0.198	0.123	10.7%	1,100	143	14.5%	10.0%
▼ First Investment Co.	OLAK.KW	NM	0.76	0.00%	1.06	0.079	(0.004)	35.2	0.095	0.039	83.5%	7,463,192	582,412	739.4%	NM
= Al-Mal Investment Co.	MALK.KW	9.4	0.25	0.00%	1.13	0.006	0.000	1.8	0.000	0.000	0.0%	0	0	0.0%	2.7%
▼ Gulf Investment House	GIHK.KW	25.2	4.51	0.00%	1.00	0.299	(0.007)	194.0	0.340	0.076	259.4%	54,887	16,142	76.6%	17.9%
▼ A'ayan Leasing & Investment Co.	AAYA.KW	3.7	1.27	0.00%	1.25	0.150	(0.010)	107.1	0.204	0.097	63.2%	8,382,346	1,273,009	345.0%	34.1%
▼ Bayan Investment Co.	BAYK.KW	NM	0.48	0.00%	0.80	0.050	(0.003)	19.6	0.065	0.032	19.9%	526,832	25,891	177.7%	NM
▼ Osoul Investment Co.	OSUL.KW	34.1	0.77	0.00%	0.45	0.089	(0.003)	13.1	0.106	0.061	10.9%	425,099	36,330	37.1%	2.2%
▼ Kuwait Finance & Investment Co.	KFSK.KW	5.4	0.65	0.00%	0.36	0.084	(0.005)	27.2	0.125	0.042	96.0%	190,550	15,962	58.5%	12.0%
▼ Kamco Investment Co.	KAMC.KW	6.1	0.80	0.00%	0.44	0.133	(0.003)	45.5	0.149	0.072	80.0%	3,338,936	441,247	80.3%	13.1%
▼ National International Holding Co.	NIHK.KW	NM	0.96	0.00%	0.68	0.153	(0.009)	34.8	0.179	0.069	84.8%	802,400	122,379	136.6%	NM
▼ UniCap Investment and Finance	UNICAP.KW	6.8	0.87	0.00%	0.71	0.071	(0.009)	17.1	0.097	0.036	69.5%	893,383	62,524	113.2%	12.8%
▼ Al Madar Finance & Investment Co.	MADR.KW	NM	1.05	0.00%	0.39	0.106	(0.006)	22.7	0.156	0.086	16.4%	104,233	11,268	99.9%	NM
▼ Al-Deera Holding	DEER.KW	NM	1.34	0.00%	1.02	0.185	(0.010)	17.0	0.223	0.018	107.6%	5,610	997	337.9%	0.1%
▼ Al-Safat Investment Co.	ALSAFAT.KW	3.3	1.45	0.00%	NA	0.132	(0.004)	33.9	0.157	0.120	0.0%	2,089,325	272,314	119.2%	43.3%
▼ Al Salam Group Holding Co.	SAGH.KW	NM	0.30	0.00%	1.31	0.028	(0.002)	7.5	0.037	0.024	10.7%	4,830,488	134,099	338.3%	NM
▼ Ektitab Holding Co.	EKTT.KW	NM	0.45	0.00%	0.98	0.019	(0.001)	6.1	0.024	0.015	26.5%	3,140,764	60,238	207.8%	NM
= Al Madina For Finance & Investment Co.	MADI.KW	1.8	0.43	0.00%	1.17	0.016	0.000	6.6	0.019	0.015	3.2%	0	0	105.7%	23.8%
▼ NOOR Financial Investment Co.	NOOR.KW	8.4	1.69	1.88%	1.21	0.329	(0.010)	131.5	0.399	0.168	93.5%	508,536	161,017	39.3%	20.2%
= Tamdeen Investment Co.	TAMI.KW	NM	0.54	0.00%	0.34	0.382	0.000	131.8	0.414	0.200	23.2%	0	0	3.9%	NM
▼ Kuwait Syrian Holding Co.	KSHC.KW	28.6	1.24	0.00%	0.70	0.050	(0.005)	8.8	0.060	0.025	56.4%	1,253,103	62,560	51.8%	4.3%
▼ Asiya Capital Investment Co.	ASIYA.KW	32.5	0.54	0.00%	0.53	0.048	(0.002)	38.4	0.057	0.034	30.8%	598,146	27,962	62.7%	1.6%
▼ Gulf North Africa Holding Co.	GNAH.KW	68.4	1.10	0.00%	1.04	0.081	(0.005)	12.1	0.087	0.057	23.5%	650,000	52,158	23.0%	1.6%
▼ Alimtiyaz Investment Group	ALIMK.KW	NM	0.71	0.00%	0.99	0.117	(0.006)	132.6	0.142	0.106	4.5%	5,468,188	630,813	107.7%	NM
▼ Manazel Holding Co.	MANK.KW	28.0	1.06	0.00%	1.37	0.052	(0.003)	22.2	0.060	0.031	62.8%	7,495,766	383,047	279.1%	3.8%
▼ National Industries Group	NIND.KW	6.8	0.99	0.00%	1.44	0.265	(0.014)	378.4	0.296	0.165	50.6%	8,681,186	2,320,585	109.0%	14.5%
▼ Warba Capital Holding Co.	WARBACAP.KW	NM	0.63	0.00%	0.68	0.100	(0.001)	5.0	0.145	0.045	105.1%	246,171	23,622	130.8%	NM
▼ Arabi Holding Group Co.	AGHC.KW	45.4	1.04	0.00%	0.16	0.182	(0.013)	31.5	0.228	0.102	(8.1%)	1,312,976	234,268	89.3%	2.3%
▼ Privatization Holding Co.	KPPC.KW	19.0	0.43	0.00%	0.80	0.055	(0.004)	33.3	0.070	0.039	36.2%	2,590,968	138,987	230.2%	2.2%
▼ Credit Rating & Collection Co.	TAHS.KW	NM	1.89	0.00%	0.03	0.055	(0.009)	9.1	0.069	0.020	150.0%	1,290,901	70,363	39.1%	NM
▼ Egypt Kuwait Holding Co.	EKKH.KW	12.9	2.67	0.00%	0.18	0.423	(0.012)	476.7	0.465	0.293	31.1%	345,105	143,593	5.8%	20.7%
▼ GFH Financial Group	GFH.KW	16.0	1.15	2.12%	0.87	0.086	(0.006)	322.8	0.104	0.047	82.3%	77,314,008	6,631,867	104.3%	7.2%
▼ Inovest	INOV.KW	NM	0.83	0.00%	0.74	0.117	(0.006)	35.2	0.134	0.063	78.4%	3,560,431	410,612	303.7%	NM
▼ Al Bareeq Holding	BAREEQ.KW	NM	0.63	0.00%	NA	0.038	(0.002)	28.5	0.102	0.034	(42.3%)	7,237,922	272,524	167.2%	NM
▲ Amar For Finance and Leasing Co.	AMARF.KW	14.2	0.80	0.00%	0.07	0.072	0.002	14.4	0.097	0.039	47.6%	419,500	27,799	32.1%	5.6%
▼ Al-Manar Financing & Leasing Co.	ALMANAR.KW	NM	0.68	0.00%	0.56	0.067	(0.006)	20.7	0.085	0.048	34.9%	229,100	15,576	34.9%	NM
▼ Boursa Kuwait Securities Co	BOURSA.KW	13.4	7.12	2.14%	0.74	1.865	(0.028)	374.4	2.432	1.091	69.5%	972,876	1,789,939	46.4%	53.2%
<b>Financial Services</b>		<b>12.6</b>	<b>1.18</b>	<b>1.05%</b>				<b>3,901.6</b>			<b>44.4%</b>	<b>205,965,405</b>	<b>26,105,257</b>		<b>9.4%</b>

## Boursa Kuwait Daily Bulletin

Sunday, November 28, 2021

Company	Reuters Ticker	Valuation Multiples				Price (KWD)		MKT Cap (KWD Mn.)	52 Weeks High (KWD)	52 Weeks Low (KWD)	YTD-21 Return #	Daily Trading Data		YTD-21 Capital Turnover	ROE
		Trailing P/E (X)	Trailing P/BV (X)	Dividend Yield	Beta	Closing	DTD Change					Volume (Shrs.)	Value (KWD)		
= Automated Systems Co.	ASCK.KW	NM	0.90	0.00%	0.17	0.106	0.000	10.6	0.122	0.068	53.4%	190	20	38.4%	NM
<b>Technology</b>		<b>NM</b>	<b>0.90</b>	<b>0.00%</b>				<b>10.6</b>			<b>53.4%</b>	<b>190</b>	<b>20</b>		<b>NM</b>
▼ Shamal Az-Zour Al-Oula Power and Water Co.	AZNOULA.KW	20.2	4.90	5.13%	0.66	0.234	(0.005)	257.4	0.276	0.220	(15.5%)	2,684,137	630,726	38.6%	24.2%
<b>Utilities</b>		<b>20.2</b>	<b>4.90</b>	<b>5.13%</b>				<b>257.4</b>			<b>(15.5%)</b>	<b>2,684,137</b>	<b>630,726</b>		<b>24.2%</b>
<b>Boursa Kuwait</b>		<b>27.6</b>	<b>1.74</b>	<b>1.64%</b>				<b>41,197.5</b>			<b>24.84%</b>	<b>445,151,488</b>	<b>90,450,988</b>		<b>6.3%</b>

## Year-to-Date 2021 Top Movers &amp; Most Active Stocks

YTD Top % Gainers	Close (KWD)	Percent Change	YTD Top % Losers	Close (KWD)	Percent Change
Al Eid Food Co.	0.267	286.0%	Yiaco Medical Co.	0.448	(46.7%)
Gulf Investment House	0.299	259.4%	Al Bareeq Holding	0.038	(42.3%)
National Real Estate Co.	0.211	223.2%	Al Kout for Industrial Projects Co.	0.451	(33.2%)
Real Estate Trade Centers Co.	0.086	211.6%	National Petroleum Services Co.	0.810	(22.8%)
Arzan Financial Group For Fin. & Invest.	0.160	186.7%	Land United Real Estate Co.	0.104	(19.4%)
YTD Most Active by Volume	Close (KWD)	Volume (Shrs.)	YTD Most Active by Value	Close (KWD)	Value (KWD)
GFH Financial Group	0.086	3,939,068,904	Kuwait Finance House	0.814	1,075,384,363
Ahli United Bank - Bahrain	0.272	3,445,300,457	National Bank of Kuwait	0.995	973,371,893
First Investment Co.	0.079	3,297,484,108	Ahli United Bank - Bahrain	0.272	819,848,013
AAN Digital Services Co.	0.018	2,971,624,576	Agility (PWC Logistics)	0.948	641,303,672
MAZAYA Holding Co.	0.072	2,780,551,776	Gulf Bank	0.245	543,144,128

\* Different Fiscal Year Company

## Disclaimer &amp; Important Disclosures

Kamco Invest is authorized and fully regulated by the Capital Markets Authority ("CMA, Kuwait") and partially regulated by the Central Bank of Kuwait ("CBK").

This document is provided for informational purposes only. Nothing contained in this document constitutes investment, an offer to invest, legal, tax or other advice or guidance and should be disregarded when considering or making investment decisions. In preparing this document, Kamco Invest did not take into account the investment objectives, financial situation and particular needs of any particular person. Accordingly, before acting on this document, investors should independently evaluate the investments and strategies referred to herein and make their own determination of whether it is appropriate in light of their own financial circumstances and objectives. The entire content of this document is subject to copyright with all rights reserved. This research and the information contained herein may not be reproduced, distributed or transmitted in Kuwait or in any other jurisdiction to any other person or incorporated in any way into another document or other material without our prior written consent.

**Analyst Certification**

Each of the analysts identified in this report, if any and where applicable, certifies, with respect to the sector, companies or securities that the individual analyses, that (1) the views expressed in this report reflect his or her personal views about all of the subject companies and securities and (2) no part of his or her compensation was, is or will be directly or indirectly dependent on the specific recommendations or views expressed in this report.

**Kamco Invest Ratings**

Kamco Invest research is based on the analysis of regional and country economics, industries and company fundamentals. Kamco Invest company research reflects a long-term (12-month) target price for a company or stock. The ratings bands are:

\* **Outperform:** Target Price represents expected returns >= 10% in the next 12 months

\* **Neutral:** Target Price represents expected returns between -10% and +10% in the next 12 months

\* **Underperform:** Target Price represents an expected return of <-10% in the next 12 months

In certain circumstances, ratings may differ from those implied by a fair value target using the criteria above. Kamco Invest policy is to maintain up-to-date fair value targets on the companies under its coverage, reflecting any material changes to the analyst's outlook on a company. Share price volatility may cause a stock to move outside the rating range implied by Kamco Invest's fair value target. Analysts may not necessarily change their ratings if this happens, but are expected to disclose the rationale behind their view to Kamco Invest clients.

Any terms and conditions proposed by you which are in addition to or which conflict with this Disclaimer are expressly rejected by Kamco Invest and shall be of no force or effect. The information contained in this document is based on current trade, statistical and other public information we consider reliable. We do not represent or warrant that such information is fair, accurate or complete and it should not be relied upon as such. Kamco Invest has no obligation to update, modify or amend this document or to otherwise notify a recipient thereof in the event that any opinion, forecast or estimate set forth herein, changes or subsequently becomes inaccurate. The publication is provided for informational uses only and is not intended for trading purposes. The information on publications does not give rise to any legally binding obligation and/or agreement, including without limitation any obligation to update such information. You shall be responsible for conducting your own investigation and analysis of the information contained or referred to in this document and of evaluating the merits and risks involved in the securities forming the subject matter of this or other such document. Moreover, the provision of certain data/information in the publication may be subject to the terms and conditions of other agreements to which Kamco Invest is a party.

Nothing in this document should be construed as a solicitation or offer, or recommendation, to acquire or dispose of any investment or to engage in any other transaction, or to provide any investment advice or service. This document is directed at Professional Clients and not Retail Clients within the meaning of CMA rules. Any other persons in receipt of this document must not rely upon or otherwise act upon it. Entities and individuals

'Kamco Investment Company (DIFC) Limited ("Kamco Invest DIFC"), Office 205, Level 2, Gate Village 1, Dubai International Financial Centre, a wholly owned subsidiary of Kamco Investment Company KSC (Public), is regulated by the Dubai Financial Services Authority (DFSA). Kamco Invest DIFC may only undertake the financial services activities that fall within the scope of its existing DFSA licence. The information in this document may be distributed by Kamco Invest DIFC on behalf of Kamco Investment Company KSC (Public). This document is intended for Professional Clients or Market Counterparties only as defined by the DFSA, and no other person should act upon it.

This document may not be distributed in Saudi Arabia except to such persons as are permitted under the Offers of Securities Regulations issued by the Capital Market Authority. The Capital Market Authority does not make any representation as to the accuracy or completeness of this document, and expressly disclaims any liability whatsoever for any loss arising from, or incurred in reliance upon, any part of this document. The recipients of this document hereby should conduct their own due diligence on the accuracy of the information relating to the contents of this document. If you do not understand the contents of this document you should consult an authorized financial advisor.

**Risk Warnings**

Any prices, valuations or forecasts are indicative and are not intended to predict actual results, which may differ substantially from those reflected. The value of an investment may go up as well as down. The value of and income from any investment may fluctuate from day to day as a result of changes in relevant economic markets (including, without limitation, foreseeable or unforeseeable changes in interest rates, foreign exchange rates, default rates, prepayment rates, political or financial conditions, etc.).

Past performance is not indicative of future results. Any opinions, estimates, valuations or projections (target prices and ratings in particular) are inherently imprecise and a matter of judgment. They are statements of opinion and not of facts based on current expectations, estimates and projections, and rely on beliefs and assumptions. Actual outcomes and returns may differ materially from what is expressed or forecasted. There are no guarantees of future performance. Certain transactions, including those involving futures, options, and other derivatives, give rise to substantial risk and are not suitable for all investors. This document does not propose to identify or to suggest all of the risks (direct or indirect) which may be associated with the investments and strategies referred to herein.

**Conflict of Interest**

Kamco Invest and its affiliates provide full investment banking services, and they and their directors, officers and employees, may take positions which conflict with the views expressed in this document. Salespeople, traders, and other professionals of Kamco Invest may provide oral or written market commentary or trading strategies to our clients and our proprietary trading desks that reflect opinions that are contrary to the opinions expressed in this document. Our asset management area, our proprietary trading desks and investing businesses may make investment decisions that are inconsistent with the recommendations or views expressed in this document. Kamco Invest may have or seek investment relationships for which it will receive compensation from the companies that are the subject of this document. Facts and views presented in this document have not been reviewed by, and may not reflect information known to, professionals in other Kamco Invest business areas, including investment banking personnel. United Gulf Bank, Bahrain owns majority of Kamco Invest's shareholding and this ownership may create, or may create the appearance of, conflicts of interest.

**No Liability & Warranty**

Kamco Invest makes neither implied nor expressed representations or warranties and, to the fullest extent permitted by applicable law, we hereby expressly disclaim any and all express, implied and statutory representations and warranties of any kind, including, without limitation, any warranty as to accuracy, timeliness, completeness, and fitness for a particular purpose and/or non-infringement. Kamco Invest will accept no liability in any event including (without limitation) your reliance on the information contained in this document, any negligence for any damages or loss of any kind, including (without limitation) direct, indirect, incidental, special or consequential damages, expenses or losses arising out of, or in connection with your use or inability to use this document, or in connection with any error, omission, defect, computer virus or system failure, or loss of any profit, goodwill or