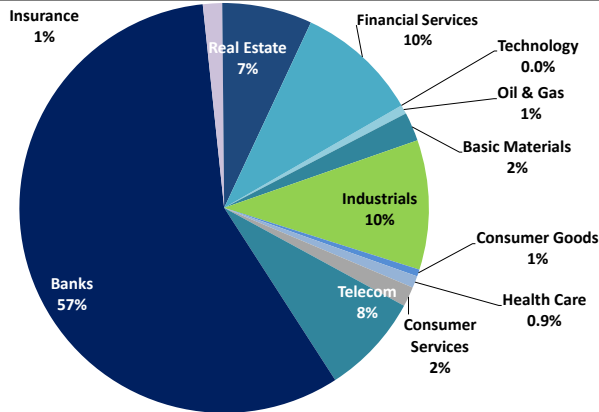


# Boursa Kuwait Daily Report

November 23, 2021

## Sector Weight by Market Cap



## Top 10 Companies by Market Capitalization

Company Name	Market Cap. (Mn KWD)	P/E (X)	ROE* (%)
1- National Bank of Kuwait	7,336.5	24.8	8.9%
2- Kuwait Finance House	7,057.1	36.4	10.3%
3- Ahli United Bank - Bahrain	2,939.0	21.5	10.8%
4- Zain	2,570.3	13.7	16.2%
5- Boubayan Bank	2,537.4	65.5	7.1%
6- Agility (PWC Logistics)	2,265.8	29.6	6.5%
7- Commercial Bank of Kuwait	996.0	55.6	2.3%
8- Mabanee Co.	955.9	20.6	9.3%
9- Gulf Bank	780.3	23.3	5.2%
10- Ahli United Bank - Kuwait	776.7	25.8	6.6%
<b>Total</b>	<b>28,215</b>	<b>26.69</b>	<b>9.0%</b>

\*: ROE is calculated based on TTM 1H-2021 net profit & shareholders' equity as of 30-June-21

## Top Movers and Most Active Stocks

Today's Top % Gainers	Close (KWD)	Change (KWD)	Percent Change
Credit Rating & Collection Co.	0.066	0.007	12.0%
Wethaq Takaful Insurance Co.	0.061	0.004	7.0%
Kuwait Syrian Holding Co.	0.056	0.003	5.5%
Kuwait Real Estate Holding Co.	0.053	0.002	4.4%
Jiyad Holding Co.	0.090	0.003	3.9%




Today's Top % Losers	Close (KWD)	Change (KWD)	Percent Change
Dalqan Real Estate Co.	0.241	(0.019)	(7.3%)
Kuwait Co. For Process Plant Const. & Cont	0.506	(0.028)	(5.2%)
Arkan Al-Kuwait Real Estate Co.	0.140	(0.007)	(4.8%)
Jazeera Airways Co.	1.156	(0.054)	(4.5%)
Amar For Finance And Leasing Co.	0.071	(0.003)	(4.3%)

Today's Most Active by Volume	Close (KWD)	Percent Change	Volume (Shares)
GFH Financial Group	0.096	(0.7%)	80,973,126
National Real Estate Co.	0.228	(0.4%)	29,028,918
Ahli United Bank - Bahrain	0.290	0.7%	21,653,169
Gulf Bank	0.256	(1.5%)	14,669,783
AAN Digital Services Co.	0.019	0.5%	11,701,784

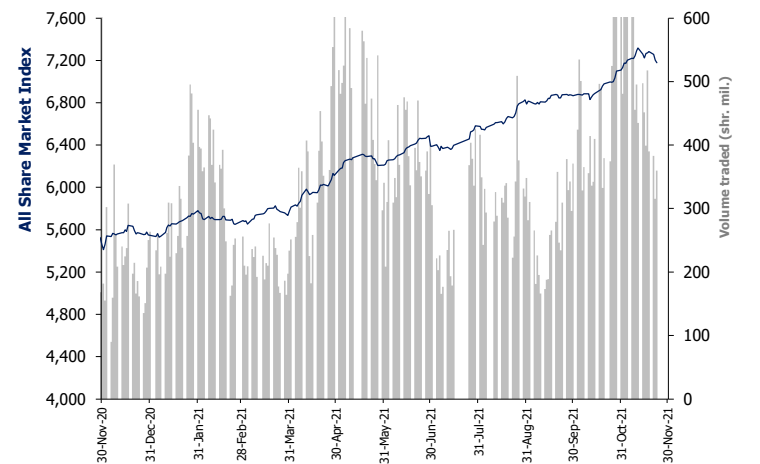
Source: Boursa Kuwait, Kamco Invest Research

## Market Capitalization - Sector Returns

	Market Cap. (KWD Mn)	DTD %	MTD %	YTD %
<b>Boursa Kuwait</b>	<b>42,684.0</b>	<b>(0.3%)</b>	<b>1.4%</b>	<b>29.3%</b>
Oil & Gas	299.6	0.2%	(1.3%)	6.9%
Basic Materials	965.7	(0.8%)	(1.6%)	20.5%
Industrials	4,331.6	(0.3%)	0.9%	36.4%
Consumer Goods	236.3	(0.3%)	(3.4%)	1.8%
Health Care	396.1	0.0%	0.5%	(3.4%)
Consumer Services	669.5	(1.6%)	5.6%	59.6%
Telecommunications	3,365.0	0.2%	(0.5%)	(0.4%)
Banks	24,381.6	(0.3%)	1.9%	29.6%
Insurance	641.5	(0.1%)	7.5%	49.8%
Real Estate	3,020.0	(0.5%)	1.0%	47.1%
Financial Services	4,105.2	(0.4%)	0.4%	52.0%
Technology	10.0	(2.0%)	(5.7%)	44.7%
Utilities	261.8	-0.4%	0.8%	-14.1%

Market Breadth	 51	 78	 38		
Benchmark Return	Closing	DTD	DTD	MTD	YTD
	Value	Chg	% Chg	% Chg	% Chg
Premier Market Index	7,774.74	(24.7)	(0.3%)	1.1%	28.5%
Main 50 Index	6,209.03	(33.0)	(0.5%)	0.7%	33.9%
Main Market Index	6,021.08	(28.0)	(0.5%)	0.7%	32.3%
All Share Market Index	7,177.23	(25.4)	(0.4%)	1.0%	29.4%
Market Cap (KWD Mn)	42,683.98	(144.3)	(0.3%)	1.4%	29.3%

## Index Performance relative to Volume



## Market Trading Data and Volatility

Trading Indicators	Today's Value	DTD Chg	DTD % Chg	Average Daily YTD 2021	Average Daily YTD 2020
Volume (Shrs Mn)	359.5	44.0	13.9%	353.5	208.3
Value Traded (KWD Mn)	67.3	9.35	16.1%	55.4	39.8
No. of Trades	14,124	1,384	10.9%	12,667	9,388

Today's Most Active by Value	Close (KWD)	Percent Change	Value (KWD)
GFH Financial Group	0.096	(0.7%)	7,731,330
Kuwait Finance House	0.836	(0.7%)	7,025,778
National Real Estate Co.	0.228	(0.4%)	6,639,033
Ahli United Bank - Bahrain	0.290	0.7%	6,203,405
Gulf Bank	0.256	(1.5%)	3,754,663

## Boursa Kuwait - Premier Market

Tuesday, November 23, 2021

	Premier Market Stocks	Closing Price			Market Capitalization			Valuation Multiples				ROE	YTD-21 Price Return	YTD-21 Trading Indicators	
		KWD	DTD Chg. (KWD)	D-T-D Return	KWD Mn	Weight in Premier Index	Weight in Boursa Kuwait	P/E (X)	P/BV (X)	Yield	Beta			Volume (Mn Shrs)	Value (KWD Mn)
▼	National Bank of Kuwait	1.020	(0.005)	(0.5%)	7,337	23.0%	17.2%	24.8	2.19	1.8%	1.27	8.9%	27.5%	1,095.29	961.82
▼	Gulf Bank	0.256	(0.004)	(1.5%)	780	2.4%	1.8%	23.3	1.21	1.9%	1.13	5.2%	16.9%	2,321.30	537.49
▼	Kuwait International Bank	0.222	(0.001)	(0.4%)	251	0.8%	0.6%	NM	0.97	0.0%	1.01	0.8%	6.7%	1,108.09	242.57
▼	Burgan Bank	0.227	(0.002)	(0.9%)	711	2.2%	1.7%	20.3	1.05	1.8%	1.05	5.1%	27.1%	550.35	123.57
▼	Kuwait Finance House	0.836	(0.006)	(0.7%)	7,057	22.1%	16.5%	36.4	3.77	1.1%	1.40	10.3%	35.8%	1,377.77	1,051.92
▼	Boubyan Bank	0.798	(0.002)	(0.2%)	2,537	8.0%	5.9%	65.5	4.68	0.0%	1.05	7.1%	47.5%	263.32	176.74
▲	National Investments Co	0.243	0.008	3.4%	213	0.7%	0.5%	8.8	1.13	4.1%	1.24	12.8%	80.0%	452.12	82.94
▼	Kuwait Projects Co. (Holding)	0.150	(0.003)	(2.0%)	300	0.9%	0.7%	NM	1.45	3.3%	0.58	0.3%	(5.7%)	376.50	57.01
▼	Al Imtiaz Investment Group	0.123	(0.001)	(0.8%)	139	0.4%	0.3%	NM	0.75	0.0%	0.98	NM	9.8%	1,212.32	150.49
▼	Kuwait Real Estate Co.	0.181	(0.002)	(1.1%)	171	0.5%	0.4%	35.1	1.33	0.0%	0.97	3.8%	74.4%	2,195.02	308.18
▼	Mabane Co.	0.816	(0.004)	(0.5%)	956	3.0%	2.2%	20.6	1.91	0.7%	1.11	9.3%	31.7%	145.61	106.27
▲	National Industries Group (Holding)	0.280	0.002	0.7%	400	1.3%	0.9%	7.2	1.04	0.0%	1.44	14.5%	59.1%	1,545.59	352.33
▼	Gulf Cable and Electrical Industries	0.969	(0.001)	(0.1%)	203	0.6%	0.5%	36.3	1.09	5.2%	0.94	3.0%	28.3%	62.55	51.38
▼	Boubyan Petrochemical Co.	0.917	(0.007)	(0.8%)	490	1.5%	1.1%	26.1	2.16	5.8%	0.72	8.3%	43.3%	104.14	89.65
▼	Qurain Petrochemicals Industries Co.	0.367	(0.003)	(0.8%)	403	1.3%	0.9%	29.4	0.97	4.1%	0.75	3.3%	8.6%	141.38	54.16
=	Agility Public Warehousing Co.	1.016	0.000	0.0%	2,266	7.1%	5.3%	29.6	1.94	0.9%	1.48	6.5%	65.3%	696.47	626.51
▲	Mobile Telecommunications Co.	0.594	0.001	0.2%	2,570	8.1%	6.0%	13.7	2.22	3.4%	1.35	16.2%	(2.0%)	684.67	415.47
▼	Human Soft Holding Co.	3.291	(0.009)	(0.3%)	402	1.3%	0.9%	6.0	3.79	12.1%	0.49	63.0%	(13.4%)	53.21	190.47
=	ALAFCO Aviation Lease and Finance Co.	0.243	0.000	0.0%	231	0.7%	0.5%	NM	0.78	0.0%	0.87	NM	12.5%	487.12	110.29
▲	Ahli United Bank (B.S.C)	0.290	0.002	0.7%	2,939	9.2%	6.9%	21.5	2.33	1.3%	1.13	10.8%	33.0%	3,422.22	813.43
▲	Warba Bank	0.289	0.005	1.8%	578	1.8%	1.4%	21.8	2.91	0.0%	1.00	13.4%	22.5%	670.04	175.12
▼	Mezzan Holding Co.	0.606	(0.004)	(0.7%)	192	0.6%	0.5%	19.2	1.73	2.9%	0.44	9.1%	1.7%	102.67	63.16
▲	Integrated holding Co.	0.381	0.001	0.3%	96	0.3%	0.2%	NM	1.59	0.0%	0.47	NM	4.1%	288.53	112.83
▼	Shamal Az-Zour Al-Oula Power and Water	0.238	(0.001)	(0.4%)	262	0.8%	0.6%	20.6	4.98	5.0%	0.66	24.2%	(14.1%)	421.65	105.15
▼	Boursa Kuwait Securities Co.	1.903	(0.035)	(1.8%)	382	1.2%	0.9%	13.6	7.26	2.1%	0.76	53.2%	73.0%	91.49	126.28
Subtotal- Premier Market Stocks		7,774.74	(24.67)	-0.3%	31,870	100%	75%	24.6	2.24	1.69%		9.1%	28.5%	19,869.43	7,085.22
Remaining of the Market					10,814		25%	55.4	1.15	1.26%		2.1%		57,199.06	4,998.56

Source: Kamco Invest Research

**Boursa Kuwait Daily Bulletin**

Tuesday, November 23, 2021

Company	Reuters Ticker	Valuation Multiples				Price (KWD)		MKT Cap (KWD Mn.)	52 Weeks High (KWD)	52 Weeks Low (KWD)	YTD-21 Return #	Daily Trading Data		YTD-21 Capital Turnover	ROE
		Trailing P/E (X)	Trailing P/BV (X)	Dividend Yield	Beta	Closing	DTD Change					Volume (Shrs.)	Value (KWD)		
▼ Senergy Holding Co.	SENE.KW	NM	1.07	0.00%	1.12	0.053	(0.001)	10.5	0.063	0.021	147.6%	259,842	13,525	177.7%	NM
▲ Independent Petroleum Group	IPGK.KW	16.1	1.15	4.70%	0.26	0.612	0.007	115.3	0.669	0.447	28.8%	1,000	612	1.8%	7.2%
▲ National Petroleum Services Co.	NAPS.KW	14.1	2.17	7.86%	0.20	0.790	0.005	79.0	1.150	0.709	(24.7%)	1,316	1,040	1.4%	15.4%
▼ The Energy House Co.	ENER.KW	24.1	2.06	0.00%	0.97	0.056	(0.002)	42.0	0.086	0.025	97.2%	362,113	20,303	9.6%	8.6%
▼ Gulf Petroleum Investment	GPIK.KW	NM	0.39	0.00%	1.08	0.029	(0.000)	13.0	0.031	0.018	47.7%	4,554,020	128,414	390.1%	NM
▲ Burgan Co. for Drilling, Tdg. & Maint. *	ABAR.KW	15.7	0.60	1.76%	NA	0.164	0.002	39.8	0.201	0.123	5.8%	126,757	20,302	149.9%	3.8%
<b>Oil &amp; Gas</b>		<b>30.3</b>	<b>1.13</b>	<b>4.12%</b>				<b>299.6</b>			<b>6.9%</b>	<b>5,305,048</b>	<b>184,197</b>		<b>3.7%</b>
▼ Kuwait Foundry Co.	KFDC.KW	NM	1.86	1.92%	0.62	0.365	(0.009)	26.4	0.430	0.258	36.2%	5,000	1,828	13.8%	NM
▼ Boubyan Petrochemicals Co.*	BPCCKW	26.1	2.16	5.83%	0.72	0.917	(0.007)	490.4	0.987	0.625	43.3%	631,234	575,760	19.5%	8.3%
▲ Al Kout for Industrial Projects Co.	ALKK.KW	NM	1.88	4.43%	0.03	0.451	0.002	45.5	0.675	0.449	(33.2%)	1	0	0.0%	NM
▼ Qurain Petrochemical Industries Co. *	ALQK.KW	29.4	0.97	4.13%	0.75	0.367	(0.003)	403.4	0.447	0.334	8.6%	339,782	125,016	12.9%	3.3%
<b>Basic Materials</b>		<b>31.4</b>	<b>1.41</b>	<b>4.95%</b>				<b>965.7</b>			<b>20.5%</b>	<b>976,017</b>	<b>702,605</b>		<b>4.5%</b>
▼ Specialities Group Holding Co.	SPEC.KW	55.0	0.77	0.00%	0.44	0.139	(0.004)	22.9	0.169	0.073	77.5%	4,748,409	665,052	301.3%	1.4%
▼ Kuwait Cement Co.	KCEM.KW	NM	0.92	0.00%	0.52	0.241	(0.004)	176.7	0.266	0.215	4.3%	153,832	37,095	9.2%	NM
▼ Gulf Cable & Electrical Ind. Co.	CABL.KW	36.3	1.09	5.16%	0.94	0.969	(0.001)	203.4	1.011	0.728	28.3%	210,726	201,231	29.8%	3.0%
▼ Heavy Eng'g Ind. & Shipbuilding Co.	SHIP.KW	12.0	1.29	4.28%	0.59	0.467	(0.003)	84.2	0.524	0.392	17.6%	238,174	111,288	79.6%	10.7%
▼ Kuwait Portland Cement Co.	PCEM.KW	13.3	1.43	4.03%	0.46	0.992	(0.016)	99.4	1.050	0.766	26.4%	25,190	24,989	15.1%	10.7%
= Shuaiba Industrial Co.	PAPE.KW	17.7	1.29	4.29%	0.13	0.230	0.000	23.2	0.230	0.145	48.4%	0	0	5.0%	7.3%
▲ Metal & Recycling Co.	MRCK.KW	NM	1.57	0.00%	0.20	0.105	0.002	12.3	0.196	0.051	97.7%	7,968	831	14.5%	NM
= ACICO Industries Co.	ACIC.KW	NM	0.57	0.00%	0.38	0.143	0.000	43.1	0.145	0.082	59.1%	3,380,695	484,294	73.0%	NM
= Hilal Cement Co.	HCCCKW	NM	0.74	0.00%	0.10	0.141	0.000	7.1	0.180	0.069	54.9%	0	0	2.3%	NM
▲ National Industries Co.	NIBM.KW	23.3	0.84	0.00%	0.17	0.202	0.003	75.2	0.218	0.150	29.5%	135,826	26,661	4.4%	3.6%
▲ Equipment Holding Co.	EQUI.KW	NM	1.01	0.00%	1.02	0.068	0.001	5.5	0.079	0.027	130.7%	850,955	55,985	233.2%	NM
▲ National Co. for Consumer Industries	NCCI.KW	NM	1.70	0.00%	NA	0.135	0.002	12.2	0.198	0.038	176.1%	357,097	47,912	691.1%	NM
▲ Salbookh Trading Co.	SALB.KW	NM	1.00	0.00%	0.59	0.053	0.001	5.6	0.072	0.035	41.1%	156,480	8,170	237.1%	NM
= Agility (PWC Logistics)	AGLT.KW	29.6	1.94	0.86%	1.48	1.016	0.000	2,265.8	1.090	0.592	65.3%	3,190,476	3,229,436	31.2%	6.5%
▼ Educational Holding Group*	EDUK.KW	7.7	1.49	0.00%	0.47	0.590	(0.025)	56.2	0.900	0.433	79.9%	584,117	344,996	21.1%	19.5%
▼ National Cleaning Co.	CLEA.KW	NM	0.47	0.00%	0.79	0.063	(0.001)	15.6	0.080	0.045	16.8%	380,402	23,689	116.3%	NM
▲ Kuwait & Gulf Link Transport Co.	KGLK.KW	NM	0.52	0.00%	0.78	0.073	0.000	21.3	0.106	0.044	39.0%	671,468	49,854	70.2%	NM
▼ Kuwait Co. For Process Plant Const. & Cont.	KCPC.KW	8.0	1.94	8.21%	0.48	0.506	(0.028)	58.6	0.629	0.367	31.8%	24,986	12,711	25.5%	24.3%
▼ Humansoft Holding Co.	HUMN.KW	6.0	3.79	12.10%	0.49	3.291	(0.009)	402.3	4.030	3.200	(13.4%)	26,949	88,697	43.5%	63.0%
= Gulf Franchising Co.	GFCI.KW	6.1	1.49	0.00%	NA	0.080	0.000	3.2	0.115	0.032	34.0%	0	0	4.2%	24.6%
= National Shooting Co.	SHOOTING.KW	NM	0.71	0.00%	1.20	0.039	0.000	10.9	0.043	0.019	108.6%	0	0	98.6%	NM
▼ Combined Group Contracting Co.	CGCK.KW	NM	1.56	1.70%	0.65	0.353	(0.003)	60.6	0.399	0.196	75.6%	401,869	140,994	92.9%	NM
▼ United Projects Group	UPAC.KW	NM	1.09	0.00%	0.05	0.288	(0.005)	110.2	0.365	0.186	(0.7%)	12,610	3,548	8.8%	0.9%
= ALAFCO Aviation Lease & Finance Co.*	ALAF.KW	NM	0.78	0.00%	0.87	0.243	0.000	231.4	0.256	0.198	12.5%	923,318	222,585	51.2%	NM
= Mubarrad Holding Co.	MBRD.KW	29.2	0.92	0.00%	0.95	0.115	0.000	18.8	0.130	0.063	60.8%	722,432	82,292	251.5%	3.1%
= KGL Logistics Co.	LOGK.KW	NM	0.25	0.00%	0.77	0.032	0.000	23.4	0.034	0.027	12.8%	0	0	21.7%	NM
▲ Integrated holding Co.	INTEGRATED.KW	NM	1.59	0.00%	0.47	0.381	0.001	96.4	0.399	0.310	4.1%	957,274	363,736	114.0%	NM
= Umm Al-Qaiwain General Investments Co.	QIC.KW	9.9	0.67	5.05%	0.18	0.099	0.000	35.9	0.099	0.063	32.0%	0	0	1.2%	6.8%
▲ Fujairah Cement Industries Co.	FCM.KW	NM	0.28	0.00%	0.46	0.057	0.000	20.1	0.069	0.028	65.2%	301,520	16,889	20.7%	NM
= Ras-Al-Khaimah for White Cement Co.	RKWC.KW	30.4	1.12	3.60%	0.14	0.139	0.000	69.5	0.175	0.061	113.8%	0	0	4.8%	3.7%
▲ Jassim Transport & Stevedoring Co.	JTC.KW	26.4	1.46	4.95%	NA	0.404	0.001	60.6	0.450	0.395	0.0%	114,400	46,158	26.0%	5.5%
<b>Industrials</b>		<b>33.4</b>	<b>1.42</b>	<b>2.32%</b>				<b>4,331.6</b>			<b>36.4%</b>	<b>18,577,173.0</b>	<b>6,289,093</b>		<b>4.3%</b>

# Boursa Kuwait Daily Bulletin

Tuesday, November 23, 2021

Company	Reuters Ticker	Valuation Multiples				Price (KWD)		MKT Cap (KWD Mn.)	52 Weeks High (KWD)	52 Weeks Low (KWD)	YTD-21 Return #	Daily Trading Data		YTD-21 Capital Turnover	ROE
		Trailing P/E (X)	Trailing P/BV (X)	Dividend Yield	Beta	Closing	DTD Change					Volume (Shrs.)	Value (KWD)		
= Palms Agro Production Co.	PAPK.KW	NM	0.60	0.00%	0.27	0.067	0.000	3.5	0.090	0.050	4.3%	0	0	2.2%	NM
▲ Livestock Transport & Trading Co.	CATT.KW	NM	1.03	0.00%	0.26	0.186	0.003	40.3	0.210	0.177	5.7%	120,852	22,478	11.3%	NM
▼ Mezzan Holding Co.	MEZZ.KW	19.2	1.73	2.86%	0.44	0.606	(0.004)	192.4	0.679	0.554	1.7%	916,834	556,514	32.3%	9.1%
<b>Consumer Goods</b>		<b>34.8</b>	<b>1.51</b>	<b>2.33%</b>				<b>236.3</b>			<b>1.8%</b>	<b>1,037,686</b>	<b>578,993</b>		<b>4.4%</b>
= Advanced Technology Co.	ATCK.KW	13.6	1.25	2.87%	0.00	0.523	0.000	78.5	0.600	0.401	(8.2%)	6	3	1.0%	9.2%
= Yiac Medical Co.	YIAC.KW	NM	4.58	0.00%	NA	0.448	0.000	7.7	0.825	0.403	(46.7%)	0	0	1.4%	NM
= Al-Maidan Clinic For Oral Health Services Co.	MIDAN.KW	31.6	19.05	0.81%	NA	1.240	0.000	310.0	1.240	1.200	0.0%	0	0	0.1%	60.3%
<b>Health Care</b>		<b>25.7</b>	<b>4.91</b>	<b>1.20%</b>				<b>396.1</b>			<b>(3.4%)</b>	<b>6</b>	<b>3</b>		<b>19.1%</b>
▲ Kuwait National Cinema Co.	KCIN.KW	NM	1.35	0.00%	0.31	0.900	0.010	91.0	0.990	0.700	20.0%	30,010	26,809	1.4%	NM
= Kuwait Hotels Co.	KHOT.KW	10.2	1.21	0.00%	NA	0.090	0.000	5.2	0.113	0.050	51.9%	0	0	20.1%	11.8%
▲ Sultan Center Food Products Co.	SCFK.KW	49.8	1.47	0.00%	0.43	0.237	0.002	68.6	0.269	0.097	137.0%	530,147	123,793	66.9%	3.0%
▼ IFA Hotels & Resorts Co.*	IFAH.KW	NM	9.36	0.00%	0.30	0.067	(0.003)	42.8	0.073	0.019	245.1%	3,214,301	220,664	138.6%	NM
▼ Oula Fuel Marketing Co.	OULA.KW	13.6	0.93	3.08%	0.47	0.160	(0.002)	64.7	0.178	0.114	30.1%	114,388	18,323	23.8%	6.9%
▼ Kuwait Resorts Co.	MUNK.KW	30.4	0.74	1.94%	0.71	0.103	(0.001)	21.7	0.112	0.060	63.0%	872,892	89,831	202.0%	2.4%
▼ Jazeera Airways Co.	JAZK.KW	NM	176.39	0.00%	0.72	1.156	(0.054)	231.2	1.345	0.588	58.4%	300,996	364,764	50.9%	NM
= Soor Fuel Marketing Co.	SOOR.KW	18.1	1.00	3.14%	0.47	0.158	0.000	63.9	0.175	0.116	29.5%	61,387	9,679	11.7%	5.5%
▼ Future Kid Entertainment and R.E Co.	KIDK.KW	NM	0.84	0.00%	0.03	0.082	(0.000)	9.5	0.122	0.064	(3.5%)	895,350	73,372	185.0%	NM
▲ Jiyad Holding Co	JIYAD.KW	NM	0.86	0.00%	0.65	0.090	0.003	31.4	0.099	0.036	102.5%	40	4	41.0%	NM
▼ Al Eid Food Co.	ALEID.KW	21.2	1.99	1.53%	NA	0.273	(0.001)	39.5	0.310	0.069	294.7%	152,712	41,704	120.7%	9.4%
<b>Consumer Services</b>		<b>NM</b>	<b>1.89</b>	<b>0.75%</b>				<b>669.5</b>			<b>59.6%</b>	<b>6,172,223</b>	<b>968,942</b>		<b>NM</b>
▲ Zain	ZAIN.KW	13.7	2.22	3.37%	1.35	0.594	0.001	2,570.3	0.641	0.581	(2.0%)	2,347,097	1,392,772	15.8%	16.2%
▲ National Mobile Telecom Co.	OORE.KW	38.8	0.63	2.23%	0.47	0.669	0.001	337.2	0.711	0.620	6.7%	51,012	33,827	1.8%	1.6%
▲ AAN digital services Co.	AAN.KW	NM	0.72	0.00%	1.32	0.019	0.000	16.7	0.020	0.011	54.8%	11,701,784	223,101	337.6%	NM
▲ Kuwait Telecommunication Co.	STC.KW	13.2	2.06	6.96%	0.55	0.862	0.002	430.5	0.970	0.822	1.2%	146,538	126,226	5.1%	15.7%
▲ Hayat Communications Co.	HAYK.KW	NM	0.95	0.00%	1.14	0.111	0.002	10.3	0.124	0.051	98.2%	604,053	65,944	154.3%	NM
<b>Telecommunications</b>		<b>14.7</b>	<b>1.74</b>	<b>3.69%</b>				<b>3,365.0</b>			<b>(0.4%)</b>	<b>14,850,484</b>	<b>1,841,869</b>		<b>11.8%</b>
▼ National Bank of Kuwait	NBKK.KW	24.8	2.19	1.84%	1.27	1.020	(0.005)	7,336.5	1.057	0.792	27.5%	3,282,470	3,357,690	15.2%	8.9%
▼ Gulf Bank	GBKK.KW	23.3	1.21	1.86%	1.13	0.256	(0.004)	780.3	0.265	0.205	16.9%	14,669,783	3,754,663	76.2%	5.2%
= Commercial Bank of Kuwait	CBKK.KW	55.6	1.30	0.00%	0.38	0.500	0.000	996.0	0.605	0.485	0.0%	0	0	3.6%	2.3%
▼ Ahli Bank of Kuwait	ABKK.KW	NM	0.82	0.00%	0.65	0.246	(0.003)	418.2	0.264	0.186	23.6%	360,001	88,560	12.4%	NM
▲ Ahli United Bank - Kuwait	BKME.KW	25.8	1.69	0.00%	0.85	0.326	0.001	776.7	0.332	0.258	24.1%	124,190	40,294	5.3%	6.6%
▼ Kuwait International Bank	KIBK.KW	NM	0.97	0.00%	1.01	0.222	(0.001)	251.5	0.233	0.198	6.7%	5,060,122	1,120,907	97.8%	0.8%
▼ Burgan Bank	BURG.KW	20.3	1.05	1.84%	1.05	0.227	(0.002)	710.8	0.240	0.195	27.1%	1,708,165	388,692	17.6%	5.1%
▼ Kuwait Finance House	KFH.KW	36.4	3.77	1.08%	1.40	0.836	(0.006)	7,057.1	0.849	0.611	35.8%	8,391,650	7,025,778	16.3%	10.3%
▼ Boubyan Bank	BOUK.KW	65.5	4.68	0.00%	1.05	0.798	(0.002)	2,537.4	0.835	0.516	47.5%	1,068,818	848,347	8.3%	7.1%
▲ Warba Bank	WARB.KW	21.8	2.91	0.00%	1.00	0.289	0.005	578.0	0.298	0.210	22.5%	3,124,339	893,209	33.5%	13.4%
▲ Ahli United Bank - Bahrain	AUBK.KW	21.5	2.33	1.26%	1.13	0.290	0.002	2,939.0	0.297	0.204	33.0%	21,653,169	6,203,405	33.8%	10.8%
<b>Banks</b>		<b>32.1</b>	<b>2.32</b>	<b>1.13%</b>				<b>24,381.6</b>			<b>29.6%</b>	<b>59,442,707</b>	<b>23,721,544</b>		<b>7.2%</b>



# Boursa Kuwait Daily Bulletin

Tuesday, November 23, 2021

Company	Reuters Ticker	Valuation Multiples				Price (KWD)		MKT Cap (KWD Mn.)	52 Weeks High (KWD)	52 Weeks Low (KWD)	YTD-21 Return #	Daily Trading Data		YTD-21 Capital Turnover	ROE
		Trailing P/E (X)	Trailing P/BV (X)	Dividend Yield	Beta	Closing	DTD Change					Volume (Shrs.)	Value (KWD)		
▲ Kuwait Insurance Co.	KINS.KW	7.3	0.72	7.29%	0.01	0.392	0.002	76.1	0.459	0.360	1.8%	10,645	4,153	12.4%	9.9%
▼ Gulf Insurance Group	GINS.KW	17.1	2.42	0.00%	0.07	1.099	(0.001)	312.7	1.200	0.536	36.2%	45,011	49,392	2.2%	14.1%
▼ Ahleiah Insurance Co.	AINS.KW	8.2	0.88	4.83%	0.13	0.485	(0.011)	106.9	0.561	0.419	8.4%	700,000	342,450	6.0%	10.8%
▲ Warba Insurance Co.	WINS.KW	11.3	0.74	4.57%	0.37	0.158	0.005	29.1	0.176	0.077	95.6%	1,236,397	191,708	98.2%	6.5%
= Kuwait Reinsurance Co.	KWRE.KW	13.5	1.26	1.34%	0.14	0.345	0.000	76.0	0.527	0.212	78.3%	0	0	0.1%	9.4%
▲ First Takaful Insurance Co.	FTIK.KW	NM	0.82	0.00%	0.34	0.062	0.001	6.6	0.081	0.034	66.8%	9,900	603	9.0%	NM
▲ Wethaq Takaful Insurance Co.	WETH.KW	30.2	0.56	0.00%	0.45	0.061	0.004	6.8	0.102	0.020	201.0%	2,673,982	166,071	329.7%	1.8%
= Bahrain Kuwait Insurance Co.	BKIK.KW	8.7	0.85	7.85%	0.02	0.191	0.000	27.3	0.000	0.000	(4.5%)	0	0	0.0%	9.7%
<b>Insurance</b>		<b>12.3</b>	<b>1.26</b>	<b>2.37%</b>				<b>641.5</b>			<b>49.8%</b>	<b>4,675,935</b>	<b>754,376</b>		<b>10.3%</b>
▼ Sokouk Holding Co.	SHCK.KW	NM	0.81	0.00%	1.15	0.034	(0.001)	20.0	0.038	0.022	45.1%	695,990	23,461	108.8%	NM
▼ Kuwait Real Estate Co.	KREK.KW	35.1	1.33	0.00%	0.97	0.181	(0.002)	171.5	0.193	0.100	74.4%	10,729,700	1,953,774	231.7%	3.8%
▼ United Real Estate Co.	UREK.KW	NM	0.53	0.00%	0.41	0.079	(0.001)	94.0	0.085	0.043	68.3%	155,360	12,332	11.7%	NM
▼ National Real Estate Co.	NREK.KW	37.6	1.36	0.00%	1.18	0.228	(0.001)	376.4	0.242	0.071	249.3%	29,028,918	6,639,033	139.2%	3.6%
= Salhia Real Estate Co.	SREK.KW	69.1	1.87	5.13%	0.34	0.564	0.000	289.2	0.607	0.501	12.1%	185,882	104,069	15.3%	2.7%
= Tamdeen Real Estate Co.	TAMK.KW	NM	0.87	0.00%	0.13	0.341	0.000	147.3	0.374	0.235	26.3%	10,509	3,553	6.2%	NM
▼ Ajial Real Estate Entertainment Co.	AREC.KW	21.3	0.48	0.00%	0.49	0.314	(0.002)	61.1	0.345	0.170	71.6%	433,561	133,909	15.4%	2.2%
▲ Al Massaleh Real Estate Co.	MREC.KW	NM	0.66	0.00%	0.28	0.056	0.001	13.3	0.085	0.030	64.9%	1,000	54	22.8%	NM
= Arab Real Estate Co.	ARAB.KW	18.7	0.45	0.00%	1.20	0.046	0.000	23.5	0.052	0.025	79.0%	319,072	14,725	106.4%	2.4%
▼ AL-Enma'a Real Estate Co.*	ENMA.KW	NM	0.84	0.00%	0.68	0.082	(0.000)	36.9	0.091	0.047	69.4%	1,024,206	82,797	113.3%	0.4%
▼ Mabanee Co.	MABK.KW	20.6	1.91	0.69%	1.11	0.816	(0.004)	955.9	0.868	0.611	31.7%	761,157	619,284	12.4%	9.3%
▼ Injazzat Real Estate Development Co.	INJA.KW	NM	0.69	0.00%	0.20	0.106	(0.001)	36.6	0.113	0.067	42.3%	173,210	18,143	120.6%	0.6%
= Investors Holding Group Co.	INVK.KW	NM	0.77	0.00%	1.20	0.016	0.000	9.7	0.020	0.013	(11.4%)	2,202,260	33,780	305.0%	NM
▼ The Commercial Real Estate Co.	TIJK.KW	60.8	0.87	2.17%	0.57	0.132	(0.001)	243.0	0.140	0.091	19.4%	1,603,769	208,298	48.6%	1.4%
▲ Sanam Real Estate Co.	SANK.KW	NM	1.19	0.00%	0.39	0.091	0.003	11.1	0.094	0.028	163.8%	408,520	36,787	72.2%	NM
▼ A'ayan Real Estate Co.	AYRE.KW	NM	0.68	0.00%	0.59	0.096	(0.000)	39.9	0.116	0.057	65.5%	1,701,884	161,950	134.5%	NM
▲ Aqar Real Estate Investment Co.	AQAR.KW	NM	0.80	0.00%	NA	0.085	0.000	20.9	0.098	0.058	43.9%	88,389	7,424	102.6%	NM
▲ Kuwait Real Estate Holding Co.	ALAQ.KW	10.9	0.97	0.00%	0.52	0.053	0.002	10.0	0.059	0.024	110.0%	17,585	895	62.3%	8.9%
▼ MAZAYA Holding Co.	MAZA.KW	NM	0.83	0.00%	0.99	0.079	(0.000)	54.4	0.122	0.056	38.3%	4,017,708	317,459	402.3%	NM
▲ Tijara Real Estate & Investment Co.	TIJA.KW	48.4	0.61	0.00%	0.32	0.065	0.000	24.1	0.073	0.042	54.8%	1,133,191	73,305	214.3%	1.3%
= Al TAMEER Real Estate Investment Co.	AMAR.KW	24.7	0.75	0.00%	0.97	0.047	0.000	11.4	0.054	0.018	137.0%	1,197,294	56,295	262.3%	3.0%
▼ Arkan Al-Kuwait Real Estate Co. *	ARKK.KW	21.0	1.04	2.86%	0.24	0.140	(0.007)	35.2	0.152	0.086	65.1%	279,650	39,252	15.1%	5.0%
= Al-Argan International Real Estate Co.	ARGK.KW	NM	0.39	0.00%	0.38	0.115	0.000	30.5	0.124	0.091	4.5%	0	0	1.4%	NM
▼ Munshaat Real Estate Projects Co.	MUNS.KW	NM	2.50	0.00%	0.63	0.070	(0.000)	22.7	0.121	0.045	0.0%	23,206	1,565	11.5%	NM
▼ First Dubai For Real Estate Development	FIRST.KW	NM	1.07	0.00%	1.44	0.080	(0.001)	79.5	0.088	0.040	93.9%	1,053,983	83,452	50.3%	1.2%
▲ Kuwait Business Town Real Estate Co.	KBTK.KW	NM	0.86	0.00%	1.09	0.090	0.000	54.3	0.104	0.038	127.1%	457,561	40,236	94.0%	NM
= Real Estate Asset Management Co.	REAM.KW	NM	0.69	0.00%	0.09	0.090	0.000	9.9	0.000	0.000	0.0%	0	0	0.0%	NM
▼ MENA Real Estate Co. *	MENK.KW	NM	0.57	0.00%	0.98	0.066	(0.001)	9.0	0.105	0.027	137.4%	4,683,014	309,359	646.2%	NM
= Al Mudon International Real Estate Co.	ALMK.KW	NM	0.17	0.00%	0.83	0.021	0.000	2.1	0.027	0.019	14.4%	0	0	110.8%	NM
▼ Real Estate Trade Centers Co.	MARA.KW	NM	0.55	0.00%	0.39	0.090	(0.001)	13.5	0.123	0.027	225.0%	42,100	3,777	30.1%	NM
▼ Kuwait Remal Real Estate Co.	REMA.KW	NM	0.75	0.00%	0.88	0.019	(0.001)	5.9	0.028	0.016	(4.0%)	3,193,189	62,353	118.1%	NM
▲ Mashaer Holding Co.	MASHAER.KW	NM	0.83	0.00%	0.53	0.078	0.000	14.0	0.086	0.056	33.1%	9,113	693	50.5%	NM
= Ajwan Gulf Real Estate Co.	AJWN.KW	NM	0.35	0.00%	0.56	0.011	0.000	2.2	0.000	0.000	0.0%	0	0	0.0%	NM
▼ Al Masaken Intl. Real Estate Dev. Co.	MASKN.KW	NM	0.80	0.00%	0.16	0.052	(0.002)	5.2	0.069	0.025	110.9%	800,950	42,528	538.7%	NM
▼ Dalqan Real Estate Co.	DALQ.KW	NM	1.78	0.00%	NA	0.241	(0.019)	11.9	0.300	0.198	(12.0%)	27,298	6,746	45.2%	0.6%
= Dar Al Thuraya Real Estate Co.	THURY.KW	29.8	0.90	0.00%	NA	0.099	0.000	14.5	0.128	0.046	55.8%	0	0	4.0%	3.0%
= Osos Holding Group Co.	OSOS.KW	14.6	1.10	5.83%	0.29	0.120	0.000	12.6	0.131	0.083	33.3%	404,099	47,558	70.1%	7.5%
▲ KFH Capital REIT	BAITAKREIT.KW	NA	NA	1.42%	NA	1.300	0.040	30.7	1.311	1.018	27.3%	34,525	43,690	13.5%	NA
▲ Land United Real Estate Co.	LAND.KW	NM	0.92	0.00%	NA	0.109	0.002	16.4	0.200	0.095	(15.5%)	7,332,159	793,295	50.4%	NM
<b>Real Estate</b>		<b>NM</b>	<b>1.12</b>	<b>0.96%</b>				<b>3,020.0</b>			<b>47.1%</b>	<b>74,230,012</b>	<b>11,975,831</b>		<b>NM</b>

**Boursa Kuwait Daily Bulletin**

Tuesday, November 23, 2021

Company	Reuters Ticker	Valuation Multiples				Price (KWD)		MKT Cap (KWD Mn.)	52 Weeks High (KWD)	52 Weeks Low (KWD)	YTD-21 Return #	Daily Trading Data		YTD-21 Capital Turnover	ROE
		Trailing P/E (X)	Trailing P/BV (X)	Dividend Yield	Beta	Closing	DTD Change					Volume (Shrs.)	Value (KWD)		
▼ Kuwait Investment Co.	KINV.KW	6.2	1.31	0.00%	0.75	0.284	(0.004)	156.6	0.317	0.119	132.8%	318,877	90,590	66.3%	21.3%
▼ Commercial Facilities Co.	FACI.KW	5.8	0.73	4.47%	0.53	0.212	(0.001)	113.8	0.220	0.168	11.6%	399,505	83,797	13.1%	12.6%
▼ Int'l Financial Advisors Co.	IFIN.KW	1.5	1.15	0.00%	1.26	0.120	(0.002)	32.0	0.145	0.059	100.7%	1,040,500	125,392	581.1%	75.6%
▲ National Investment Co.	NINV.KW	8.8	1.13	4.12%	1.24	0.243	0.008	212.9	0.248	0.128	80.0%	3,761,043	901,255	51.6%	12.8%
▼ Kuwait Projects Co.(Holding)	KPRO.KW	NM	1.45	3.28%	0.58	0.150	(0.003)	300.0	0.170	0.140	(5.7%)	7,431,535	1,122,556	18.8%	0.3%
▲ Coast Invest. & Development Co.	COAS.KW	NM	1.18	0.00%	1.30	0.121	0.001	56.3	0.127	0.050	149.5%	2,206,293	264,753	154.2%	NM
▼ The Securities House Co.	SECH.KW	NM	1.04	0.00%	1.14	0.105	(0.001)	47.3	0.117	0.052	146.5%	5,073,453	535,434	403.4%	NM
= Arzan Financial Group For Fin. & Invest.	ARZA.KW	50.4	1.22	0.00%	1.02	0.164	0.000	131.7	0.183	0.055	193.9%	1,951,460	315,525	314.7%	2.4%
▼ Kuwait Financial Centre	MARKZ.KW	4.6	0.86	0.00%	0.79	0.181	(0.002)	87.0	0.207	0.080	117.0%	4,287,313	772,062	112.0%	18.5%
▲ Kuwait & M.E. Financial Inv. Co.	KMEF.KW	11.6	1.16	0.00%	0.58	0.131	0.003	28.8	0.198	0.123	7.4%	115,000	14,875	14.4%	10.0%
▼ First Investment Co.	OLAK.KW	NM	0.80	0.00%	1.05	0.083	(0.000)	37.0	0.095	0.039	93.0%	6,983,228	576,279	736.8%	NM
= Al-Mal Investment Co.	MALK.KW	NM	0.25	0.00%	1.14	0.006	0.000	1.8	0.000	0.000	0.0%	0	0	0.0%	NM
▼ Gulf Investment House	GIHK.KW	25.8	4.60	0.00%	1.00	0.305	(0.001)	197.9	0.340	0.076	266.6%	21,257	6,281	76.5%	17.9%
▼ A'ayan Leasing & Investment Co.	AAYA.KW	3.9	1.32	0.00%	1.25	0.156	(0.003)	111.4	0.204	0.097	69.7%	4,668,232	730,349	341.2%	34.1%
▲ Bayan Investment Co.	BAYK.KW	NM	0.53	0.00%	0.79	0.054	0.001	21.4	0.065	0.032	30.5%	156,044	8,301	177.4%	NM
▲ Osoul Investment Co.	OSUL.KW	35.1	0.79	0.00%	0.44	0.092	0.003	13.5	0.106	0.061	14.4%	3,100	282	36.7%	2.2%
▼ Kuwait Finance & Investment Co.	KFSK.KW	5.6	0.67	0.00%	0.35	0.087	(0.003)	28.1	0.125	0.042	102.6%	162,200	14,295	58.4%	12.0%
= Kamco Investment Co.	KAMC.KW	6.3	0.83	0.00%	0.44	0.139	0.000	47.6	0.149	0.072	88.1%	1,529,221	209,239	78.9%	13.1%
▲ National International Holding Co.	NIHK.KW	NM	1.03	0.00%	0.67	0.164	0.002	37.3	0.179	0.069	98.1%	3,747,828	614,069	135.3%	NM
▼ UniCap Investment and Finance	UNICAP.KW	7.7	0.99	0.00%	0.69	0.081	(0.001)	19.5	0.097	0.036	93.6%	166,985	13,096	112.8%	12.8%
▲ Al Madar Finance & Investment Co.	MADR.KW	NM	1.12	0.00%	0.38	0.113	0.001	24.2	0.156	0.086	24.0%	186,974	20,997	99.7%	NM
= Al-Deera Holding	DEER.KW	NM	1.41	0.00%	1.01	0.195	0.000	17.9	0.223	0.018	118.8%	0	0	337.9%	0.1%
▼ Al-Safat Investment Co.	ALSAFAT.KW	3.5	1.50	0.00%	NA	0.137	(0.001)	35.2	0.157	0.120	0.0%	1,730,900	235,695	117.4%	43.3%
▼ Al Salam Group Holding Co.	SAGH.KW	NM	0.33	0.00%	1.30	0.031	(0.000)	8.3	0.037	0.024	22.2%	3,610,568	109,267	334.3%	NM
▼ Ektitab Holding Co.	EKTT.KW	NM	0.47	0.00%	0.97	0.020	(0.000)	6.3	0.024	0.015	31.8%	2,570,963	50,316	205.3%	NM
= Al Madina For Finance & Investment Co.	MADI.KW	1.8	0.43	0.00%	1.18	0.016	0.000	6.6	0.019	0.015	3.2%	0	0	105.7%	23.8%
▲ NOOR Financial Investment Co.	NOOR.KW	9.0	1.81	1.76%	1.21	0.352	0.002	140.7	0.399	0.168	107.1%	318,052	110,785	39.1%	20.2%
= Tamdeen Investment Co.	TAMI.KW	NM	0.55	0.00%	0.34	0.384	0.000	132.5	0.414	0.200	23.9%	0	0	3.9%	NM
▲ Kuwait Syrian Holding Co.	KSHC.KW	31.9	1.39	0.00%	0.68	0.056	0.003	9.8	0.060	0.025	74.6%	937,394	50,740	49.1%	4.3%
▼ Asiya Capital Investment Co.	ASIYA.KW	34.0	0.56	0.00%	0.52	0.050	(0.000)	40.2	0.057	0.034	37.1%	661,537	32,512	62.6%	1.6%
▼ Gulf North Africa Holding Co.	GNAH.KW	71.4	1.15	0.00%	1.03	0.084	(0.000)	12.6	0.087	0.057	28.8%	94,174	7,826	22.5%	1.6%
▼ Alimtiyaz Investment Group	ALIMK.KW	NM	0.75	0.00%	0.98	0.123	(0.001)	139.4	0.142	0.106	9.8%	5,396,363	662,961	106.9%	NM
▼ Manazel Holding Co.	MANK.KW	30.1	1.15	0.00%	1.36	0.056	(0.001)	23.9	0.060	0.031	75.1%	3,173,220	175,315	276.2%	3.8%
▲ National Industries Group	NIND.KW	7.2	1.04	0.00%	1.44	0.280	0.002	399.8	0.296	0.165	59.1%	8,406,637	2,322,966	108.2%	14.5%
= Warba Capital Holding Co.	WARBACAP.KW	NM	0.68	0.00%	0.68	0.108	0.000	5.4	0.145	0.045	122.2%	20,146	2,121	128.3%	NM
▲ Arabi Holding Group Co.	AGHC.KW	46.4	1.06	0.00%	0.15	0.186	0.004	32.2	0.228	0.102	(6.1%)	386,938	71,636	87.9%	2.3%
▼ Privatization Holding Co.	KPPC.KW	20.3	0.45	0.00%	0.79	0.058	(0.001)	35.6	0.070	0.039	45.6%	2,771,200	161,125	229.5%	2.2%
▲ Credit Rating & Collection Co.	TAHS.KW	NM	2.29	0.00%	NA	0.066	0.007	11.0	0.059	0.020	201.8%	8,770,745	568,277	34.6%	NM
▼ Egypt Kuwait Holding Co.	EKKH.KW	13.4	2.77	0.00%	0.18	0.439	(0.006)	494.7	0.465	0.293	36.0%	575,003	250,441	5.7%	20.7%
▼ GFH Financial Group	GFH.KW	17.9	1.29	1.89%	0.86	0.096	(0.001)	361.7	0.104	0.047	104.3%	80,973,126	7,731,330	100.0%	7.2%
▲ Inovest	INOV.KW	NM	0.85	0.00%	0.74	0.119	0.001	35.8	0.134	0.063	81.4%	1,328,642	158,063	299.5%	NM
▲ Al Bareeq Holding	BAREEQ.KW	NM	0.67	0.00%	NA	0.040	0.000	30.5	0.102	0.034	(38.3%)	6,556,352	261,675	165.7%	NM
▼ Amar For Finance and Leasing Co.	AMARF.KW	14.0	0.79	0.00%	0.08	0.071	(0.003)	14.2	0.097	0.039	45.8%	766,665	55,197	31.6%	5.6%
▼ Al-Manar Financing & Leasing Co.	ALMANAR.KW	NM	0.74	0.00%	0.53	0.074	(0.000)	22.8	0.085	0.048	48.6%	237,311	17,035	34.8%	NM
▼ Boursa Kuwait Securities Co	BOURSA.KW	13.6	7.26	2.10%	0.76	1.903	(0.035)	382.1	2.432	1.091	73.0%	376,939	721,155	45.6%	53.2%
<b>Financial Services</b>		<b>13.3</b>	<b>1.24</b>	<b>1.00%</b>				<b>4,105.2</b>			<b>52.0%</b>	<b>173,872,923</b>	<b>20,175,864</b>		<b>9.3%</b>

## Boursa Kuwait Daily Bulletin

Tuesday, November 23, 2021

Company	Reuters Ticker	Valuation Multiples				Price (KWD)		MKT Cap (KWD Mn.)	52 Weeks High (KWD)	52 Weeks Low (KWD)	YTD-21 Return #	Daily Trading Data		YTD-21 Capital Turnover	ROE
		Trailing P/E (X)	Trailing P/BV (X)	Dividend Yield	Beta	Closing	DTD Change					Volume (Shrs.)	Value (KWD)		
▼ Automated Systems Co.	ASCK.KW	NM	0.85	0.00%	0.18	0.100	(0.002)	10.0	0.122	0.068	44.7%	271	27	38.4%	NM
<b>Technology</b>		<b>NM</b>	<b>0.85</b>	<b>0.00%</b>				<b>10.0</b>			<b>44.7%</b>	<b>271</b>	<b>27</b>		<b>NM</b>
▼ Shamal Az-Zour Al-Oula Power and Water Co.	AZNOULA.KW	20.6	4.98	5.04%	0.66	0.238	(0.001)	261.8	0.276	0.220	(14.1%)	349,535	83,123	38.3%	24.2%
<b>Utilities</b>		<b>20.6</b>	<b>4.98</b>	<b>5.04%</b>				<b>261.8</b>			<b>(14.1%)</b>	<b>349,535</b>	<b>83,123</b>		<b>24.2%</b>
<b>Boursa Kuwait</b>		<b>28.6</b>	<b>1.81</b>	<b>1.58%</b>				<b>42,684.0</b>			<b>29.35%</b>	<b>359,490,020</b>	<b>67,276,467</b>		<b>6.3%</b>

## Year-to-Date 2021 Top Movers &amp; Most Active Stocks

YTD Top % Gainers	Close (KWD)	Percent Change	YTD Top % Losers	Close (KWD)	Percent Change
Al Eid Food Co.	0.273	294.7%	Yiaco Medical Co.	0.448	(46.7%)
Gulf Investment House	0.305	266.6%	Al Bareeq Holding	0.040	(38.3%)
National Real Estate Co.	0.228	249.3%	Al Kout for Industrial Projects Co.	0.451	(33.2%)
IFA Hotels & Resorts Co.	0.067	245.1%	National Petroleum Services Co.	0.790	(24.7%)
Real Estate Trade Centers Co.	0.090	225.0%	Land United Real Estate Co.	0.109	(15.5%)
YTD Most Active by Volume	Close (KWD)	Volume (Shrs.)	YTD Most Active by Value	Close (KWD)	Value (KWD)
GFH Financial Group	0.096	3,777,658,008	Kuwait Finance House	0.836	1,051,916,474
Ahli United Bank - Bahrain	0.290	3,422,217,710	National Bank of Kuwait	1.020	961,822,155
First Investment Co.	0.083	3,285,845,553	Ahli United Bank - Bahrain	0.290	813,426,564
AAN Digital Services Co.	0.019	2,945,422,365	Agility (PWC Logistics)	1.016	626,509,777
MAZAYA Holding Co.	0.079	2,769,130,312	Gulf Bank	0.256	537,490,426

\* Different Fiscal Year Company

## Disclaimer &amp; Important Disclosures

Kamco Invest is authorized and fully regulated by the Capital Markets Authority ("CMA, Kuwait") and partially regulated by the Central Bank of Kuwait ("CBK").

This document is provided for informational purposes only. Nothing contained in this document constitutes investment, an offer to invest, legal, tax or other advice or guidance and should be disregarded when considering or making investment decisions. In preparing this document, Kamco Invest did not take into account the investment objectives, financial situation and particular needs of any particular person. Accordingly, before acting on this document, investors should independently evaluate the investments and strategies referred to herein and make their own determination of whether it is appropriate in light of their own financial circumstances and objectives. The entire content of this document is subject to copyright with all rights reserved. This research and the information contained herein may not be reproduced, distributed or transmitted in Kuwait or in any other jurisdiction to any other person or incorporated in any way into another document or other material without our prior written consent.

## Analyst Certification

Each of the analysts identified in this report, if any and where applicable, certifies, with respect to the sector, companies or securities that the individual analyses, that (1) the views expressed in this report reflect his or her personal views about all of the subject companies and securities and (2) no part of his or her compensation was, is or will be directly or indirectly dependent on the specific recommendations or views expressed in this report.

## Kamco Invest Ratings

Kamco Invest research is based on the analysis of regional and country economics, industries and company fundamentals. Kamco Invest company research reflects a long-term (12-month) target price for a company or stock. The ratings bands are:

\* **Outperform:** Target Price represents expected returns >= 10% in the next 12 months

\* **Neutral:** Target Price represents expected returns between -10% and +10% in the next 12 months

\* **Underperform:** Target Price represents an expected return of <-10% in the next 12 months

In certain circumstances, ratings may differ from those implied by a fair value target using the criteria above. Kamco Invest policy is to maintain up-to-date fair value targets on the companies under its coverage, reflecting any material changes to the analyst's outlook on a company. Share price volatility may cause a stock to move outside the rating range implied by Kamco Invest's fair value target. Analysts may not necessarily change their ratings if this happens, but are expected to disclose the rationale behind their view to Kamco Invest clients.

Any terms and conditions proposed by you which are in addition to or which conflict with this Disclaimer are expressly rejected by Kamco Invest and shall be of no force or effect. The information contained in this document is based on current trade, statistical and other public information we consider reliable. We do not represent or warrant that such information is fair, accurate or complete and it should not be relied upon as such. Kamco Invest has no obligation to update, modify or amend this document or to otherwise notify a recipient thereof in the event that any opinion, forecast or estimate set forth herein, changes or subsequently becomes inaccurate. The publication is provided for informational uses only and is not intended for trading purposes. The information on publications does not give rise to any legally binding obligation and/or agreement, including without limitation any obligation to update such information. You shall be responsible for conducting your own investigation and analysis of the information contained or referred to in this document and of evaluating the merits and risks involved in the securities forming the subject matter of this or other such document. Moreover, the provision of certain data/information in the publication may be subject to the terms and conditions of other agreements to which Kamco Invest is a party.

Nothing in this document should be construed as a solicitation or offer, or recommendation, to acquire or dispose of any investment or to engage in any other transaction, or to provide any investment advice or service. This document is directed at Professional Clients and not Retail Clients within the meaning of CMA rules. Any other persons in receipt of this document must not rely upon or otherwise act upon it. Entities and individuals

\*Kamco Investment Company (DIFC) Limited ("Kamco Invest DIFC"), Office 205, Level 2, Gate Village 1, Dubai International Financial Centre, a wholly owned subsidiary of Kamco Investment Company KSC (Public), is regulated by the Dubai Financial Services Authority (DFSA). Kamco Invest DIFC may only undertake the financial services activities that fall within the scope of its existing DFSA licence. The information in this document may be distributed by Kamco Invest DIFC on behalf of Kamco Investment Company KSC (Public). This document is intended for Professional Clients or Market Counterparties only as defined by the DFSA, and no other person should act upon it.

This document may not be distributed in Saudi Arabia except to such persons as are permitted under the Offers of Securities Regulations issued by the Capital Market Authority. The Capital Market Authority does not make any representation as to the accuracy or completeness of this document, and expressly disclaims any liability whatsoever for any loss arising from, or incurred in reliance upon, any part of this document. The recipients of this document hereby should conduct their own due diligence on the accuracy of the information relating to the contents of this document. If you do not understand the contents of this document you should consult an authorized financial advisor.

## Risk Warnings

Any prices, valuations or forecasts are indicative and are not intended to predict actual results, which may differ substantially from those reflected. The value of an investment may go up as well as down. The value of and income from any investment may fluctuate from day to day as a result of changes in relevant economic markets (including, without limitation, foreseeable or unforeseeable changes in interest rates, foreign exchange rates, default rates, prepayment rates, political or financial conditions, etc.).

Past performance is not indicative of future results. Any opinions, estimates, valuations or projections (target prices and ratings in particular) are inherently imprecise and a matter of judgment. They are statements of opinion and not of facts based on current expectations, estimates and projections, and rely on beliefs and assumptions. Actual outcomes and returns may differ materially from what is expressed or forecasted. There are no guarantees of future performance. Certain transactions, including those involving futures, options, and other derivatives, give rise to substantial risk and are not suitable for all investors. This document does not propose to identify or to suggest all of the risks (direct or indirect) which may be associated with the investments and strategies referred to herein.

## Conflict of Interest

Kamco Invest and its affiliates provide full investment banking services, and they and their directors, officers and employees, may take positions which conflict with the views expressed in this document. Salespeople, traders, and other professionals of Kamco Invest may provide oral or written market commentary or trading strategies to our clients and our proprietary trading desks that reflect opinions that are contrary to the opinions expressed in this document. Our asset management area, our proprietary trading desks and investing businesses may make investment decisions that are inconsistent with the recommendations or views expressed in this document. Kamco Invest may have or seek investment relationships for which it will receive compensation from the companies that are the subject of this document. Facts and views presented in this document have not been reviewed by, and may not reflect information known to, professionals in other Kamco Invest business areas, including investment banking personnel. United Gulf Bank, Bahrain owns majority of Kamco Invest's shareholding and this ownership may create, or may create the appearance of, conflicts of interest.

## No Liability &amp; Warranty

Kamco Invest makes neither implied nor expressed representations or warranties and, to the fullest extent permitted by applicable law, we hereby expressly disclaim any and all express, implied and statutory representations and warranties of any kind, including, without limitation, any warranty as to accuracy, timeliness, completeness, and fitness for a particular purpose and/or non-infringement. Kamco Invest will accept no liability in any event including (without limitation) your reliance on the information contained in this document, any negligence for any damages or loss of any kind, including (without limitation) direct, indirect, incidental, special or consequential damages, expenses or losses arising out of, or in connection with your use or inability to use this document, or in connection with any error, omission, defect, computer virus or system failure, or loss of any profit, goodwill or