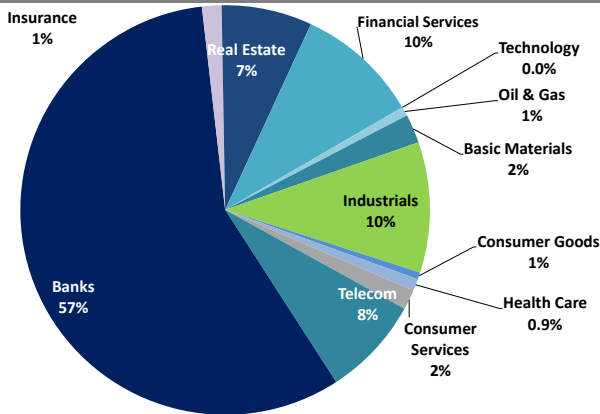


Boursa Kuwait Daily Report

November 17, 2021

Sector Weight by Market Cap



Top 10 Companies by Market Capitalization

Company Name	Market Cap. (Mn KWD)	P/E (X)	ROE* (%)
1- National Bank of Kuwait	7,466.0	25.2	8.9%
2- Kuwait Finance House	7,116.2	36.7	10.3%
3- Ahli United Bank - Bahrain	2,928.9	21.4	10.8%
4- Boubyan Bank	2,594.6	67.0	7.1%
5- Zain	2,578.9	13.8	16.2%
6- Agility (PWC Logistics)	2,326.0	30.4	6.5%
7- Commercial Bank of Kuwait	1,006.0	56.1	2.3%
8- Mabanee Co.	973.4	20.9	9.3%
9- Gulf Bank	798.6	23.8	5.2%
10- Ahli United Bank - Kuwait	776.7	25.8	6.6%
Total	28,565	27.02	9.0%

*: ROE is calculated based on TTM 1H-2021 net profit & shareholders' equity as of 30-June-21

Top Movers and Most Active Stocks

Today's Top % Gainers	Close (KWD)	Change (KWD)	Percent Change
Al TAMEER Real Estate Investment Co.	0.053	0.005	10.0%
Sanam Real Estate Co.	0.092	0.006	6.6%
Credit Rating & Collection Co.	0.055	0.003	5.8%
Shuaiba Industrial Co.	0.227	0.012	5.6%
Manazel Holding Co.	0.057	0.003	5.4%




Today's Top % Losers	Close (KWD)	Change (KWD)	Percent Change
MENA Real Estate Co.	0.076	(0.013)	(14.1%)
National Petroleum Services Co.	0.790	(0.054)	(6.4%)
The Energy House Co.	0.056	(0.004)	(6.2%)
Dar Al Thuraya Real Estate Co.	0.099	(0.005)	(5.0%)
Palms Agro Production Co.	0.071	(0.004)	(4.9%)

Today's Most Active by Volume	Close (KWD)	Percent Change	Volume (Shares)
GFH Financial Group	0.101	3.3%	124,809,381
MENA Real Estate Co.	0.076	(14.1%)	61,448,680
National Real Estate Co.	0.233	1.3%	34,619,859
Al TAMEER Real Estate Investment Co.	0.053	10.0%	25,904,395
AAN Digital Services Co.	0.019	(0.5%)	15,568,053

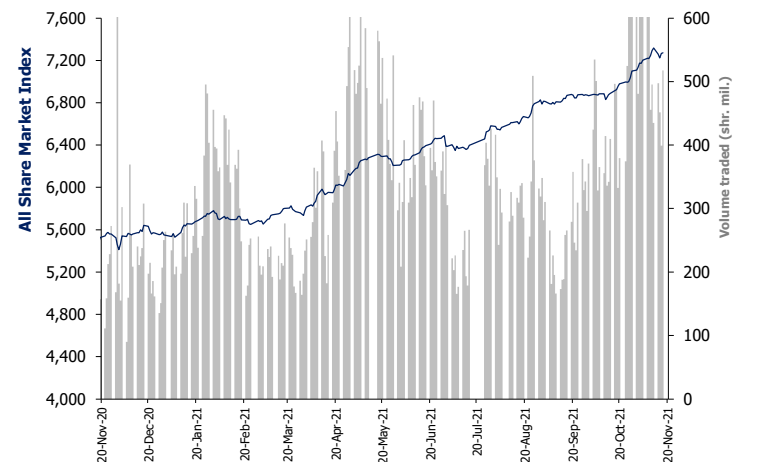
Source: Boursa Kuwait, Kamco Invest Research

Market Capitalization - Sector Returns

	Market Cap. (KWD Mn)	DTD ▲	DTD % Chg	MTD % Chg	YTD % Chg
Boursa Kuwait	43,158.9	▲	0.1%	2.5%	30.8%
Oil & Gas	300.9	▼	(2.5%)	(0.9%)	7.3%
Basic Materials	980.3	▲	0.2%	(0.1%)	22.3%
Industrials	4,411.7	▲	0.2%	2.8%	38.9%
Consumer Goods	239.4	▲	1.1%	(2.1%)	3.2%
Health Care	396.1	▲	0.9%	0.5%	(3.4%)
Consumer Services	684.1	▼	(0.7%)	7.9%	63.1%
Telecommunications	3,372.2	▲	0.0%	(0.3%)	(0.2%)
Banks	24,582.0	▲	0.0%	2.7%	30.7%
Insurance	660.8	▲	1.9%	10.7%	54.3%
Real Estate	3,076.6	▼	(0.3%)	2.9%	49.8%
Financial Services	4,181.2	▲	0.6%	2.3%	54.8%
Technology	10.6	▲	1.9%	0.0%	53.4%
Utilities	262.9	=	0.0%	1.3%	-13.7%

Market Breadth	 69	 55	 43		
Benchmark Return	Closing	DTD	DTD	MTD	YTD
	Value	Chg	% Chg	% Chg	% Chg
Premier Market Index	7,866.22	2.4	0.0%	2.3%	30.0%
Main 50 Index	6,318.88	13.0	0.2%	2.5%	36.3%
Main Market Index	6,123.53	14.6	0.2%	2.4%	34.5%
All Share Market Index	7,271.10	6.0	0.1%	2.3%	31.1%
Market Cap (KWD Mn)	43,158.87	36.2	0.1%	2.5%	30.8%

Index Performance relative to Volume



Market Trading Data and Volatility

Trading Indicators	Today's Value	DTD Chg	DTD % Chg	Average Daily YTD 2021	Average Daily YTD 2020
Volume (Shrs Mn)	517.6	118.4	29.7%	353.4	209.2
Value Traded (KWD Mn)	73.3	11.04	17.7%	55.3	39.5
No. of Trades	17,035	3,012	21.5%	12,649	9,343

Today's Most Active by Value	Close (KWD)	Percent Change	Value (KWD)
GFH Financial Group	0.101	3.3%	12,659,193
National Real Estate Co.	0.233	1.3%	8,084,776
National Bank of Kuwait	1.038	0.1%	5,297,446
MENA Real Estate Co.	0.076	(14.1%)	4,853,046
Warba Bank	0.314	4.3%	4,154,072

Boursa Kuwait - Premier Market

Wednesday, November 17, 2021

	Premier Market Stocks	Closing Price			Market Capitalization			Valuation Multiples				ROE	YTD-21 Price Return	YTD-21 Trading Indicators	
		KWD	DTD Chg. (KWD)	D-T-D Return	KWD Mn	Weight in Premier Index	Weight in Boursa Kuwait	P/E (X)	P/BV (X)	Yield	Beta			Volume (Mn Shrs)	Value (KWD Mn)
▲	National Bank of Kuwait	1.038	0.001	0.1%	7,466	23.2%	17.3%	25.2	2.23	1.8%	1.27	8.9%	29.8%	1,080.98	947.05
▲	Gulf Bank	0.262	0.002	0.8%	799	2.5%	1.9%	23.8	1.24	1.8%	1.13	5.2%	19.6%	2,291.22	529.72
▲	Kuwait International Bank	0.224	0.001	0.4%	254	0.8%	0.6%	NM	0.98	0.0%	1.01	0.8%	7.7%	1,089.46	238.41
=	Burgan Bank	0.231	0.000	0.0%	723	2.2%	1.7%	20.7	1.07	1.8%	1.05	5.1%	29.4%	541.83	121.86
▼	Kuwait Finance House	0.843	(0.001)	(0.1%)	7,116	22.1%	16.5%	36.7	3.80	1.1%	1.40	10.3%	37.0%	1,359.16	1,036.27
▼	Boubyan Bank	0.816	(0.006)	(0.7%)	2,595	8.1%	6.0%	67.0	4.79	0.0%	1.05	7.1%	50.8%	260.32	174.33
▲	National Investments Co	0.241	0.004	1.7%	211	0.7%	0.5%	8.7	1.12	4.2%	1.25	12.8%	78.5%	445.29	81.32
▲	Kuwait Projects Co. (Holding)	0.142	0.002	1.4%	284	0.9%	0.7%	NM	1.37	3.5%	0.59	0.3%	(10.7%)	357.13	54.12
▲	Al Imtiaz Investment Group	0.127	0.001	0.8%	144	0.4%	0.3%	NM	0.78	0.0%	0.98	NM	13.4%	1,200.58	149.03
▲	Kuwait Real Estate Co.	0.182	0.001	0.6%	172	0.5%	0.4%	35.2	1.34	0.0%	0.97	3.8%	75.3%	2,151.84	300.19
▼	Mabane Co.	0.831	(0.010)	(1.2%)	973	3.0%	2.3%	20.9	1.95	0.7%	1.11	9.3%	34.1%	143.61	104.62
▼	National Industries Group (Holding)	0.284	(0.003)	(1.0%)	406	1.3%	0.9%	7.3	1.06	0.0%	1.44	14.5%	61.4%	1,528.84	347.66
▲	Gulf Cable and Electrical Industries	0.965	0.004	0.4%	203	0.6%	0.5%	36.2	1.09	5.2%	0.94	3.0%	27.8%	62.04	50.89
▲	Boubyan Petrochemical Co.	0.936	0.012	1.3%	501	1.6%	1.2%	26.6	2.20	5.7%	0.72	8.3%	46.3%	102.90	88.51
▼	Qurain Petrochemicals Industries Co.	0.371	(0.004)	(1.1%)	408	1.3%	0.9%	29.8	0.98	4.1%	0.75	3.3%	9.8%	139.04	53.29
▲	Agility Public Warehousing Co.	1.043	0.001	0.1%	2,326	7.2%	5.4%	30.4	1.99	0.8%	1.48	6.5%	69.7%	685.03	614.78
▲	Mobile Telecommunications Co.	0.596	0.001	0.2%	2,579	8.0%	6.0%	13.8	2.23	3.4%	1.35	16.2%	(1.7%)	675.95	410.29
▲	Human Soft Holding Co.	3.287	0.081	2.5%	402	1.2%	0.9%	6.0	3.79	12.1%	0.49	63.0%	(13.5%)	51.66	185.41
=	ALAFCO Aviation Lease and Finance Co.	0.248	0.000	0.0%	236	0.7%	0.5%	NM	0.79	0.0%	0.87	NM	14.8%	479.87	108.52
▼	Ahli United Bank (B.S.C)	0.289	(0.001)	(0.3%)	2,929	9.1%	6.8%	21.4	2.32	1.3%	1.13	10.8%	32.5%	3,380.19	801.29
▲	Warba Bank	0.314	0.013	4.3%	495	1.5%	1.1%	18.6	2.49	0.0%	0.99	13.4%	33.1%	642.54	166.50
▲	Mezzan Holding Co.	0.616	0.011	1.8%	196	0.6%	0.5%	19.5	1.76	2.8%	0.44	9.1%	3.3%	100.19	61.64
=	Integrated holding Co.	0.376	0.000	0.0%	95	0.3%	0.2%	NM	1.57	0.0%	0.47	NM	2.7%	277.21	108.48
=	Shamal Az-Zour Al-Oula Power and Water	0.239	0.000	0.0%	263	0.8%	0.6%	20.7	5.00	5.0%	0.67	24.2%	(13.7%)	418.20	104.33
▼	Boursa Kuwait Securities Co.	1.965	(0.020)	(1.0%)	395	1.2%	0.9%	14.1	7.50	2.0%	0.75	53.2%	78.6%	89.89	123.19
Subtotal- Premier Market Stocks		7,866.22	2.44	0.0%	32,168	100%	75%	24.8	2.26	1.67%		9.1%	30.0%	19,554.97	6,961.72
Remaining of the Market					10,990		25%	56.3	1.17	1.24%		2.1%		56,065.56	4,875.46

Source: Kamco Invest Research

Boursa Kuwait Daily Bulletin

Wednesday, November 17, 2021

Company	Reuters Ticker	Valuation Multiples				Price (KWD)		MKT Cap (KWD Mn.)	52 Weeks High (KWD)	52 Weeks Low (KWD)	YTD-21 Return #	Daily Trading Data		YTD-21 Capital Turnover	ROE
		Trailing P/E (X)	Trailing P/BV (X)	Dividend Yield	Beta	Closing	DTD Change					Volume (Shrs.)	Value (KWD)		
▲ Senergy Holding Co.	SENE.KW	NM	1.13	0.00%	1.12	0.055	0.001	11.0	0.063	0.021	159.9%	1,129,700	60,893	176.1%	NM
= Independent Petroleum Group	IPGK.KW	16.0	1.14	4.76%	0.26	0.605	0.000	114.0	0.669	0.447	27.4%	4,881	2,953	1.8%	7.2%
▼ National Petroleum Services Co.	NAPS.KW	14.1	2.17	7.86%	0.20	0.790	(0.054)	79.0	1.150	0.709	(24.7%)	8,765	6,973	1.4%	15.4%
▼ The Energy House Co.	ENER.KW	24.1	2.07	0.00%	0.96	0.056	(0.004)	42.1	0.086	0.025	97.5%	1,228,147	71,272	9.4%	8.6%
▲ Gulf Petroleum Investment	GPIK.KW	NM	0.40	0.00%	1.08	0.029	0.000	13.1	0.031	0.018	48.7%	7,365,325	212,627	385.8%	NM
= Burgan Co. for Drilling, Tdg. & Maint. *	ABAR.KW	16.5	0.63	1.68%	NA	0.172	0.000	41.7	0.207	0.127	11.0%	247,233	42,375	149.6%	3.8%
Oil & Gas		30.4	1.13	4.10%				300.9			7.3%	9,984,051	397,094		3.7%
▲ Kuwait Foundry Co.	KFDC.KW	NM	1.87	1.90%	0.63	0.368	0.003	26.6	0.430	0.258	37.3%	37,016	13,622	13.8%	NM
▲ Boubyan Petrochemicals Co.*	BPCC.KW	26.6	2.20	5.72%	0.72	0.936	0.012	500.6	0.987	0.625	46.3%	325,681	302,029	19.2%	8.3%
= Al Kout for Industrial Projects Co.	ALKK.KW	NM	1.87	4.45%	0.03	0.449	0.000	45.3	0.675	0.449	(33.5%)	0	0	0.0%	NM
▼ Qurain Petrochemical Industries Co. *	ALQK.KW	29.8	0.98	4.08%	0.75	0.371	(0.004)	407.8	0.447	0.334	9.8%	791,181	294,821	12.6%	3.3%
Basic Materials		31.9	1.43	4.87%				980.3			22.3%	1,153,878	610,472		4.5%
▲ Specialities Group Holding Co.	SPEC.KW	55.4	0.78	0.00%	0.43	0.140	0.001	23.1	0.169	0.073	78.8%	605,349	84,558	290.7%	1.4%
▼ Kuwait Cement Co.	KCEM.KW	NM	0.93	0.00%	0.53	0.244	(0.002)	178.9	0.266	0.215	5.6%	101,148	24,556	9.2%	NM
▲ Gulf Cable & Electrical Ind. Co.	CABL.KW	36.2	1.09	5.18%	0.94	0.965	0.004	202.6	1.011	0.728	27.8%	110,252	105,833	29.6%	3.0%
▼ Heavy Eng'g Ind. & Shipbuilding Co.	SHIP.KW	12.1	1.30	4.26%	0.59	0.470	(0.002)	84.7	0.524	0.392	18.4%	144,118	68,104	79.1%	10.7%
▼ Kuwait Portland Cement Co.	PCEM.KW	13.6	1.46	3.94%	0.46	1.015	(0.004)	101.7	1.050	0.766	29.3%	2,407	2,409	15.0%	10.7%
▲ Shuaiba Industrial Co.	PAPE.KW	17.5	1.27	4.34%	0.13	0.227	0.012	22.9	0.223	0.145	46.5%	21,500	4,881	4.9%	7.3%
▲ Metal & Recycling Co.	MRCK.KW	NM	1.66	0.00%	0.19	0.111	0.001	13.0	0.196	0.051	109.0%	1	0	14.5%	NM
▲ ACICO Industries Co.	ACIC.KW	NM	0.54	0.00%	0.38	0.134	0.001	40.4	0.143	0.082	49.1%	1,353,285	179,805	68.9%	NM
= Hilal Cement Co.	HCCK.KW	NM	0.74	0.00%	0.10	0.140	0.000	7.0	0.180	0.069	53.8%	0	0	2.3%	NM
▲ National Industries Co.	NIBM.KW	23.3	0.84	0.00%	0.17	0.202	0.008	75.2	0.218	0.150	29.5%	19,866	3,974	4.4%	3.6%
▲ Equipment Holding Co.	EQUI.KW	NM	1.08	0.00%	1.01	0.074	0.001	5.9	0.079	0.027	148.3%	1,589,638	115,249	227.4%	NM
▼ National Co. for Consumer Industries	NCCI.KW	NM	1.73	0.00%	NA	0.138	(0.004)	12.4	0.198	0.038	182.2%	2,135,943	295,906	684.4%	NM
▲ Salbookh Trading Co.	SALB.KW	NM	1.06	0.00%	0.59	0.056	0.002	5.9	0.072	0.035	49.6%	2,754,081	146,460	235.7%	NM
▲ Agility (PWC Logistics)	AGLT.KW	30.4	1.99	0.83%	1.48	1.043	0.001	2,326.0	1.090	0.592	69.7%	1,907,970	1,988,656	30.7%	6.5%
▼ Educational Holding Group*	EDUK.KW	8.8	1.71	0.00%	0.47	0.676	(0.026)	64.4	0.900	0.433	106.1%	119,953	82,301	19.5%	19.5%
= National Cleaning Co.	CLEA.KW	NM	0.48	0.00%	0.79	0.064	0.000	16.0	0.080	0.045	19.6%	906,544	57,191	115.9%	NM
▼ Kuwait & Gulf Link Transport Co.	KGLK.KW	NM	0.56	0.00%	0.78	0.079	(0.001)	23.0	0.106	0.044	50.0%	1,447,902	116,577	68.7%	NM
= Kuwait Co. For Process Plant Const. & Cont.	KCPC.KW	8.5	2.06	7.72%	0.48	0.538	0.000	62.3	0.629	0.367	40.2%	1,657	856	25.4%	24.3%
▲ Humansoft Holding Co.	HUMN.KW	6.0	3.79	12.11%	0.49	3.287	0.081	401.8	4.030	3.200	(13.5%)	109,187	357,153	42.3%	63.0%
▲ Gulf Franchising Co.	GFCI.KW	6.7	1.65	0.00%	NA	0.089	0.000	3.6	0.115	0.032	48.3%	1,899	161	4.2%	24.6%
= National Shooting Co.	SHOOTING.KW	NM	0.71	0.00%	1.21	0.039	0.000	10.9	0.043	0.019	108.6%	0	0	98.6%	NM
▼ Combined Group Contracting Co.	CGCK.KW	NM	1.58	1.67%	0.65	0.358	(0.003)	61.4	0.399	0.196	78.1%	371,227	132,603	92.1%	NM
▼ United Projects Group	UPAC.KW	NM	1.08	0.00%	0.05	0.287	(0.011)	109.8	0.365	0.186	(1.0%)	62,033	17,862	8.8%	0.9%
= ALAFCO Aviation Lease & Finance Co.*	ALAF.KW	NM	0.79	0.00%	0.87	0.248	0.000	236.1	0.256	0.198	14.8%	1,063,137	264,392	50.4%	NM
▼ Mubarrad Holding Co.	MBRD.KW	29.7	0.93	0.00%	0.95	0.117	(0.001)	19.2	0.130	0.063	63.6%	378,897	44,138	250.4%	3.1%
= KGL Logistics Co.	LOGK.KW	NM	0.25	0.00%	0.77	0.032	0.000	23.4	0.034	0.027	12.8%	0	0	21.7%	NM
= Integrated holding Co.	INTEGRATED.KW	NM	1.57	0.00%	0.47	0.376	0.000	95.1	0.399	0.310	2.7%	1,839,580	692,325	109.6%	NM
= Umm Al-Qaiwain General Investments Co.	QIC.KW	9.9	0.67	5.05%	0.18	0.099	0.000	35.9	0.099	0.063	32.0%	0	0	1.2%	6.8%
▲ Fujairah Cement Industries Co.	FCEM.KW	NM	0.29	0.00%	0.46	0.058	0.002	20.6	0.069	0.028	69.6%	1,288,910	73,146	20.5%	NM
= Ras-Al-Khaimah for White Cement Co.	RKWC.KW	29.8	1.09	3.68%	0.14	0.136	0.000	68.0	0.175	0.061	109.2%	4,442	604	4.8%	3.7%
▼ Jassim Transport & Stevedoring Co.	JTC.KW	26.2	1.45	4.98%	NA	0.402	(0.003)	60.3	0.450	0.395	0.0%	730,006	295,128	25.5%	5.5%
Industrials		34.0	1.45	2.27%				4,411.7			38.9%	19,070,932.0	5,154,827		4.3%

Boursa Kuwait Daily Bulletin

Wednesday, November 17, 2021

Company	Reuters Ticker	Valuation Multiples				Price (KWD)		MKT Cap (KWD Mn.)	52 Weeks High (KWD)	52 Weeks Low (KWD)	YTD-21 Return #	Daily Trading Data		YTD-21 Capital Turnover	ROE
		Trailing P/E (X)	Trailing P/BV (X)	Dividend Yield	Beta	Closing	DTD Change					Volume (Shrs.)	Value (KWD)		
▼ Palms Agro Production Co.	PAPK.KW	NM	0.63	0.00%	0.26	0.071	(0.004)	3.7	0.090	0.050	10.4%	100	7	2.2%	NM
▼ Livestock Transport & Trading Co.	CATT.KW	NM	1.03	0.00%	0.26	0.185	(0.003)	40.1	0.210	0.177	5.1%	50,000	9,250	11.2%	NM
▲ Mezzan Holding Co.	MEZZ.KW	19.5	1.76	2.81%	0.44	0.616	0.011	195.6	0.679	0.554	3.3%	534,029	328,351	31.6%	9.1%
Consumer Goods		35.2	1.53	2.30%				239.4			3.2%	584,129	337,608		4.4%
▲ Advanced Technology Co.	ATCK.KW	13.6	1.25	2.87%	0.01	0.523	0.023	78.5	0.600	0.401	(8.2%)	200	107	1.0%	9.2%
= Yiac Medical Co.	YIAC.KW	NM	4.58	0.00%	NA	0.448	0.000	7.7	0.825	0.403	(46.7%)	0	0	1.4%	NM
= Al-Maidan Clinic For Oral Health Services Co.	MIDAN.KW	31.6	19.05	0.81%	NA	1.240	0.000	310.0	1.240	1.200	0.0%	0	0	0.1%	60.3%
Health Care		25.7	4.91	1.20%				396.1			(3.4%)	200	107		19.1%
▼ Kuwait National Cinema Co.	KCIN.KW	NM	1.33	0.00%	0.31	0.887	(0.046)	89.6	0.990	0.700	18.3%	1,000	887	1.3%	NM
▼ Kuwait Hotels Co.	KHOT.KW	10.2	1.21	0.00%	NA	0.090	(0.002)	5.2	0.113	0.050	51.9%	4,500	407	20.1%	11.8%
▼ Sultan Center Food Products Co.	SCFK.KW	50.5	1.49	0.00%	0.43	0.240	(0.004)	69.5	0.269	0.097	140.0%	1,835,200	442,986	65.9%	3.0%
▲ IFA Hotels & Resorts Co.*	IFAH.KW	NM	9.39	0.00%	0.30	0.068	0.002	42.9	0.071	0.019	246.2%	2,147,317	144,227	136.2%	NM
▲ Oula Fuel Marketing Co.	OULA.KW	13.7	0.94	3.06%	0.47	0.161	0.001	65.1	0.178	0.114	30.9%	168,683	27,173	23.7%	6.9%
▲ Kuwait Resorts Co.	MUNK.KW	31.3	0.76	1.89%	0.70	0.106	0.001	22.3	0.112	0.060	67.7%	1,171,114	123,938	200.0%	2.4%
= Jazeera Airways Co.	JAZK.KW	NM	186.15	0.00%	0.72	1.220	0.000	244.0	1.345	0.588	67.1%	466,961	569,825	50.1%	NM
▼ Soor Fuel Marketing Co.	SOOR.KW	18.3	1.01	3.10%	0.47	0.160	(0.001)	64.8	0.175	0.116	31.1%	33,348	5,275	11.5%	5.5%
▼ Future Kid Entertainment and R.E Co.	KIDK.KW	NM	0.84	0.00%	0.03	0.083	(0.001)	9.6	0.122	0.064	(2.9%)	1,305,801	106,564	181.5%	NM
▼ Jiyad Holding Co	JIYAD.KW	NM	0.83	0.00%	0.65	0.087	(0.001)	30.5	0.099	0.036	96.4%	18,000	1,557	40.9%	NM
▲ Al Eid Food Co.	ALEID.KW	21.9	2.05	1.48%	NA	0.281	0.004	40.6	0.310	0.069	306.3%	190,583	52,259	120.0%	9.4%
Consumer Services		NM	1.93	0.73%				684.1			63.1%	7,342,507	1,475,097		NM
▲ Zain	ZAIN.KW	13.8	2.23	3.36%	1.35	0.596	0.001	2,578.9	0.641	0.581	(1.7%)	1,570,367	936,875	15.6%	16.2%
▼ National Mobile Telecom Co.	OORE.KW	38.7	0.63	2.24%	0.47	0.667	(0.007)	336.2	0.711	0.620	6.4%	25,037	16,719	1.8%	1.6%
▼ AAN digital services Co.	AAN.KW	NM	0.70	0.00%	1.32	0.019	(0.000)	16.2	0.020	0.011	50.0%	15,568,053	288,188	329.2%	NM
= Kuwait Telecommunication Co.	STC.KW	13.1	2.06	6.97%	0.55	0.861	0.000	430.0	0.970	0.822	1.1%	18,424	15,885	5.0%	15.7%
▼ Hayat Communications Co.	HAYK.KW	NM	1.01	0.00%	1.14	0.118	(0.002)	10.9	0.124	0.051	110.7%	183,111	21,314	151.5%	NM
Telecommunications		14.8	1.74	3.68%				3,372.2			(0.2%)	17,364,992	1,278,980		11.8%
▲ National Bank of Kuwait	NBKK.KW	25.2	2.23	1.81%	1.27	1.038	0.001	7,466.0	1.057	0.792	29.8%	5,104,462	5,297,446	15.0%	8.9%
▲ Gulf Bank	GBKK.KW	23.8	1.24	1.81%	1.13	0.262	0.002	798.6	0.265	0.205	19.6%	6,429,972	1,682,536	75.2%	5.2%
▲ Commercial Bank of Kuwait	CBKK.KW	56.1	1.32	0.00%	0.38	0.505	0.003	1,006.0	0.605	0.485	1.0%	1	1	3.6%	2.3%
= Ahli Bank of Kuwait	ABKK.KW	NM	0.83	0.00%	0.66	0.249	0.000	423.3	0.264	0.186	25.1%	677,323	168,184	12.2%	NM
= Ahli United Bank - Kuwait	BKME.KW	25.8	1.69	0.00%	0.85	0.326	0.000	776.7	0.332	0.258	24.1%	341,806	111,091	5.2%	6.6%
▲ Kuwait International Bank	KIBK.KW	NM	0.98	0.00%	1.01	0.224	0.001	253.7	0.233	0.198	7.7%	5,162,742	1,155,728	96.2%	0.8%
= Burgan Bank	BURG.KW	20.7	1.07	1.81%	1.05	0.231	0.000	723.3	0.240	0.195	29.4%	2,526,747	372,994	17.3%	5.1%
▼ Kuwait Finance House	KFH.KW	36.7	3.80	1.07%	1.40	0.843	(0.001)	7,116.2	0.849	0.611	37.0%	4,302,287	3,625,399	16.1%	10.3%
▼ Boubyan Bank	BOUK.KW	67.0	4.79	0.00%	1.05	0.816	(0.006)	2,594.6	0.829	0.516	50.8%	1,672,784	1,381,864	8.2%	7.1%
▲ Warba Bank	WARB.KW	18.6	2.49	0.00%	0.99	0.314	0.013	494.6	0.303	0.228	33.1%	13,348,174	4,154,072	40.8%	13.4%
▼ Ahli United Bank - Bahrain	AUBK.KW	21.4	2.32	1.26%	1.13	0.289	(0.001)	2,928.9	0.297	0.204	32.5%	5,579,574	1,617,026	33.4%	10.8%
Banks		32.3	2.33	1.12%				24,582.0			30.7%	45,145,872	19,566,339		7.2%

Boursa Kuwait Daily Bulletin

Wednesday, November 17, 2021

Company	Reuters Ticker	Valuation Multiples				Price (KWD)		MKT Cap (KWD Mn.)	52 Weeks High (KWD)	52 Weeks Low (KWD)	YTD-21 Return #	Daily Trading Data		YTD-21 Capital Turnover	ROE
		Trailing P/E (X)	Trailing P/BV (X)	Dividend Yield	Beta	Closing	DTD Change					Volume (Shrs.)	Value (KWD)		
▼ Kuwait Insurance Co.	KINS.KW	7.3	0.72	7.27%	0.01	0.393	(0.001)	76.3	0.459	0.360	2.1%	577,966	227,146	12.1%	9.9%
▲ Gulf Insurance Group	GINS.KW	17.9	2.52	0.00%	0.07	1.147	0.047	326.4	1.200	0.536	42.1%	23,028	26,413	2.0%	14.1%
= Ahleiah Insurance Co.	AINS.KW	8.5	0.92	4.64%	0.13	0.505	0.000	111.4	0.561	0.419	12.8%	0	0	5.5%	10.8%
▼ Warba Insurance Co.	WINS.KW	11.2	0.73	4.60%	0.37	0.157	(0.004)	28.9	0.176	0.077	94.4%	1,018,034	160,045	96.7%	6.5%
= Kuwait Reinsurance Co.	KWRE.KW	13.7	1.28	1.32%	0.14	0.350	0.000	77.1	0.527	0.212	80.9%	0	0	0.1%	9.4%
= First Takaful Insurance Co.	FTIK.KW	NM	0.85	0.00%	0.34	0.064	0.000	6.8	0.081	0.034	73.0%	0	0	9.0%	NM
▲ Wethaq Takaful Insurance Co.	WETH.KW	29.4	0.54	0.00%	0.45	0.060	0.000	6.6	0.102	0.020	193.1%	566,438	32,816	326.1%	1.8%
= Bahrain Kuwait Insurance Co.	BKIK.KW	8.7	0.85	7.85%	0.02	0.191	0.000	27.3	0.000	0.000	(4.5%)	0	0	0.0%	9.7%
Insurance		12.6	1.30	2.30%				660.8			54.3%	2,185,466	446,420		10.3%
▲ Sokouk Holding Co.	SHCK.KW	NM	0.86	0.00%	1.15	0.036	0.001	21.3	0.038	0.022	54.1%	2,187,659	76,246	106.7%	NM
▲ Kuwait Real Estate Co.	KREK.KW	35.2	1.34	0.00%	0.97	0.182	0.001	172.4	0.187	0.100	75.3%	7,654,167	1,386,195	227.1%	3.8%
▼ United Real Estate Co.	UREK.KW	NM	0.54	0.00%	0.41	0.080	(0.001)	95.0	0.085	0.043	70.2%	576,221	46,156	11.7%	NM
▲ National Real Estate Co.	NREK.KW	38.5	1.39	0.00%	1.18	0.233	0.003	384.7	0.233	0.071	256.9%	34,619,859	8,084,776	131.4%	3.6%
▼ Salhia Real Estate Co.	SREK.KW	69.8	1.89	5.07%	0.34	0.570	(0.007)	292.3	0.607	0.501	13.3%	172,091	97,842	15.1%	2.7%
▼ Tamdeen Real Estate Co.	TAMK.KW	NM	0.87	0.00%	0.13	0.342	(0.003)	147.7	0.374	0.235	26.7%	77,564	26,565	6.2%	NM
▲ Ajial Real Estate Entertainment Co.	AREC.KW	22.3	0.50	0.00%	0.49	0.329	0.014	64.0	0.345	0.170	79.8%	606,200	194,445	14.7%	2.2%
▼ Al Massaleh Real Estate Co.	MREC.KW	NM	0.63	0.00%	0.28	0.054	(0.001)	12.7	0.085	0.030	57.9%	136,005	7,432	22.6%	NM
▲ Arab Real Estate Co.	ARAB.KW	19.3	0.46	0.00%	1.20	0.048	0.002	24.2	0.052	0.025	84.8%	7,939,951	374,196	104.7%	2.4%
▲ AL-Enma'a Real Estate Co.*	ENMA.KW	NM	0.86	0.00%	0.68	0.084	0.002	37.8	0.091	0.047	73.7%	1,823,602	152,364	112.5%	0.4%
▼ Mabanee Co.	MABK.KW	20.9	1.95	0.68%	1.11	0.831	(0.010)	973.4	0.868	0.611	34.1%	1,308,040	1,089,064	12.3%	9.3%
▼ Injazzat Real Estate Development Co.	INJA.KW	NM	0.69	0.00%	0.20	0.106	(0.003)	36.6	0.113	0.067	42.3%	4,395,943	476,235	120.1%	0.6%
▼ Investors Holding Group Co.	INVK.KW	NM	0.78	0.00%	1.20	0.016	(0.000)	9.8	0.020	0.013	(9.7%)	3,287,701	52,112	301.9%	NM
▼ The Commercial Real Estate Co.	TIJK.KW	62.2	0.89	2.12%	0.57	0.135	(0.001)	248.5	0.140	0.091	22.1%	233,797	31,716	48.4%	1.4%
▲ Sanam Real Estate Co.	SANK.KW	NM	1.20	0.00%	0.39	0.092	0.006	11.2	0.088	0.028	165.2%	6,006,611	543,078	70.4%	NM
▲ A'ayan Real Estate Co.	AYRE.KW	NM	0.71	0.00%	0.59	0.101	0.003	42.0	0.116	0.057	74.1%	4,118,547	410,354	130.7%	NM
▼ Aqar Real Estate Investment Co.	AQAR.KW	NM	0.81	0.00%	NA	0.086	(0.001)	21.2	0.098	0.058	45.8%	426,132	36,858	102.2%	NM
▲ Kuwait Real Estate Holding Co.	ALAQ.KW	11.1	0.98	0.00%	0.52	0.053	0.001	10.2	0.059	0.024	113.6%	388,924	20,722	61.9%	8.9%
▲ MAZAYA Holding Co.	MAZA.KW	NM	0.86	0.00%	0.99	0.082	0.000	56.2	0.122	0.056	42.7%	8,686,113	711,549	399.6%	NM
▲ Tijara Real Estate & Investment Co.	TIJA.KW	49.5	0.63	0.00%	0.31	0.066	0.001	24.6	0.073	0.042	58.1%	2,409,641	161,512	212.4%	1.3%
▲ Al TAMEER Real Estate Investment Co.	AMAR.KW	27.5	0.83	0.00%	0.97	0.053	0.005	12.7	0.052	0.018	164.5%	25,904,395	1,338,084	254.4%	3.0%
= Arkan Al-Kuwait Real Estate Co. *	ARKK.KW	22.2	1.10	2.70%	0.24	0.148	0.000	37.2	0.152	0.086	74.5%	176,373	25,345	15.0%	5.0%
= Al-Argan International Real Estate Co.	ARGK.KW	NM	0.38	0.00%	0.38	0.111	0.000	29.4	0.124	0.091	0.9%	6,800	753	1.4%	NM
▼ Munshaat Real Estate Projects Co.	MUNS.KW	NM	2.55	0.00%	0.62	0.072	(0.001)	23.2	0.121	0.045	2.3%	593,783	41,165	11.3%	NM
▲ First Dubai For Real Estate Development	FIRST.KW	NM	1.11	0.00%	1.44	0.082	0.001	81.9	0.088	0.040	99.8%	2,556,983	209,787	49.6%	1.2%
▲ Kuwait Business Town Real Estate Co.	KBTk.KW	NM	0.87	0.00%	1.09	0.090	0.000	54.7	0.104	0.038	128.6%	784,504	70,801	93.7%	NM
= Real Estate Asset Management Co.	REAM.KW	NM	0.69	0.00%	0.09	0.090	0.000	9.9	0.000	0.000	0.0%	0	0	0.0%	NM
▼ MENA Real Estate Co. *	MENK.KW	NM	0.65	0.00%	0.98	0.076	(0.013)	10.4	0.105	0.027	173.7%	61,448,680	4,853,046	612.9%	NM
= Al Mudon International Real Estate Co.	ALMK.KW	NM	0.17	0.00%	0.83	0.021	0.000	2.1	0.027	0.019	14.4%	0	0	110.8%	NM
= Real Estate Trade Centers Co.	MARA.KW	NM	0.71	0.00%	0.39	0.115	0.000	17.3	0.123	0.027	316.7%	13,504	1,458	29.2%	NM
▼ Kuwait Remal Real Estate Co.	REMA.KW	NM	0.79	0.00%	0.88	0.020	(0.000)	6.2	0.028	0.016	0.5%	9,252,789	190,977	114.7%	NM
▼ Mashaer Holding Co.	MASHAER.KW	NM	0.83	0.00%	0.53	0.078	(0.001)	14.0	0.086	0.056	33.1%	557,799	43,688	50.1%	NM
= Ajwan Gulf Real Estate Co.	AJWN.KW	NM	0.35	0.00%	0.56	0.011	0.000	2.2	0.000	0.000	0.0%	0	0	0.0%	NM
▲ Al Masaken Intl. Real Estate Dev. Co.	MASKN.KW	NM	0.85	0.00%	0.16	0.055	0.002	5.5	0.069	0.025	123.9%	1,997,219	109,870	535.8%	NM
▼ Dalqan Real Estate Co.	DALQ.KW	NM	1.90	0.00%	NA	0.257	(0.002)	12.7	0.300	0.198	(6.2%)	61,719	15,093	45.0%	0.6%
▼ Dar Al Thuraya Real Estate Co.	THURY.KW	29.8	0.90	0.00%	NA	0.099	(0.005)	14.5	0.128	0.046	55.8%	25,205	2,491	4.0%	3.0%
▼ Osos Holding Group Co.	OSOS.KW	14.0	1.05	6.09%	0.28	0.115	(0.001)	12.1	0.131	0.083	27.8%	42,043	4,837	67.6%	7.5%
▲ KFH Capital REIT	BAITAKREIT.KW	NA	NA	1.49%	NA	1.245	0.016	29.4	1.311	1.018	21.9%	1,891	2,328	13.2%	NA
▼ Land United Real Estate Co.	LAND.KW	NM	0.87	0.00%	NA	0.103	(0.001)	15.5	0.200	0.095	(20.2%)	1,382,210	144,351	42.9%	NM
Real Estate		NM	1.14	0.94%				3,076.6			49.8%	191,860,665	21,033,490		NM

Boursa Kuwait Daily Bulletin

Wednesday, November 17, 2021

Company	Reuters Ticker	Valuation Multiples				Price (KWD)		MKT Cap (KWD Mn.)	52 Weeks High (KWD)	52 Weeks Low (KWD)	YTD-21 Return #	Daily Trading Data		YTD-21	ROE
		Trailing P/E (X)	Trailing P/BV (X)	Dividend Yield	Beta	Closing	DTD Change					Volume (Shrs.)	Value (KWD)	Capital Turnover	
▲ Kuwait Investment Co.	KINV.KW	6.4	1.37	0.00%	0.75	0.297	0.001	163.7	0.317	0.119	143.4%	235,221	70,110	66.1%	21.3%
▼ Commercial Facilities Co.	FACI.KW	5.8	0.73	4.47%	0.53	0.212	(0.004)	113.8	0.220	0.168	11.6%	185,577	39,441	12.9%	12.6%
▲ Int'l Financial Advisors Co.	IFIN.KW	1.5	1.16	0.00%	1.26	0.121	0.002	32.3	0.145	0.059	102.3%	6,152,925	739,786	575.9%	75.6%
▲ National Investment Co.	NINV.KW	8.7	1.12	4.16%	1.25	0.241	0.004	211.2	0.248	0.128	78.5%	663,524	158,181	50.8%	12.8%
▲ Kuwait Projects Co.(Holding)	KPRO.KW	NM	1.37	3.46%	0.59	0.142	0.002	284.0	0.170	0.140	(10.7%)	612,034	86,649	17.9%	0.3%
= Coast Invest. & Development Co.	COAS.KW	NM	1.15	0.00%	1.30	0.118	0.000	54.9	0.127	0.050	143.3%	4,334,636	515,759	150.0%	NM
▼ The Securities House Co.	SECH.KW	NM	1.08	0.00%	1.14	0.109	(0.002)	49.1	0.117	0.052	155.9%	6,194,850	681,869	399.4%	NM
▲ Arzan Financial Group For Fin. & Invest.	ARZA.KW	51.6	1.25	0.00%	1.02	0.168	0.001	134.9	0.183	0.055	201.1%	1,699,515	284,555	313.9%	2.4%
= Kuwait Financial Centre	MARKZ.KW	5.1	0.94	0.00%	0.78	0.198	0.000	95.2	0.207	0.080	137.4%	262,443	51,320	109.2%	18.5%
= Kuwait & M.E. Financial Inv. Co.	KMEF.KW	12.2	1.22	0.00%	0.58	0.138	0.000	30.4	0.198	0.123	13.1%	0	0	14.0%	10.0%
▲ First Investment Co.	OLAK.KW	NM	0.81	0.00%	1.05	0.084	0.002	37.3	0.095	0.039	94.4%	8,286,030	693,678	728.0%	NM
= Al-Mal Investment Co.	MALK.KW	NM	0.25	0.00%	1.14	0.006	0.000	1.8	0.000	0.000	0.0%	0	0	0.0%	NM
= Gulf Investment House	GIHK.KW	26.1	4.66	0.00%	1.00	0.309	0.000	200.5	0.340	0.076	271.4%	45,059	13,653	76.5%	17.9%
▼ A'ayan Leasing & Investment Co.	AAYA.KW	4.0	1.35	0.00%	1.25	0.159	(0.001)	113.5	0.204	0.097	73.0%	1,846,434	293,897	338.9%	34.1%
▼ Bayan Investment Co.	BAYK.KW	NM	0.54	0.00%	0.79	0.056	(0.001)	22.0	0.065	0.032	34.3%	826,249	46,539	176.9%	NM
▼ Osoul Investment Co.	OSUL.KW	36.1	0.81	0.00%	0.45	0.094	(0.002)	13.9	0.106	0.061	17.4%	396,044	35,915	36.5%	2.2%
▲ Kuwait Finance & Investment Co.	KFSK.KW	5.7	0.69	0.00%	0.35	0.089	0.002	28.6	0.125	0.042	106.3%	1,443,853	130,187	57.6%	12.0%
▲ Kamco Investment Co.	KAMC.KW	6.5	0.86	0.00%	0.44	0.143	0.002	49.0	0.149	0.072	93.5%	2,159,037	307,118	76.9%	13.1%
▼ National International Holding Co.	NIHK.KW	NM	1.02	0.00%	0.67	0.162	(0.001)	36.9	0.179	0.069	95.7%	2,506,410	409,037	130.1%	NM
= UniCap Investment and Finance	UNICAP.KW	7.8	1.00	0.00%	0.69	0.083	0.000	19.8	0.097	0.036	96.4%	423,020	34,633	112.2%	12.8%
▲ Al Madar Finance & Investment Co.	MADR.KW	NM	1.13	0.00%	0.37	0.114	0.001	24.4	0.156	0.086	25.1%	206,002	23,483	99.3%	NM
= Al-Deera Holding	DEER.KW	NM	1.41	0.00%	1.01	0.195	0.000	17.9	0.223	0.018	118.8%	0	0	337.9%	0.1%
= Al-Safat Investment Co.	ALSAFAT.KW	3.3	1.41	0.00%	NA	0.129	0.000	33.1	0.157	0.120	0.0%	3,627,658	473,143	112.6%	43.3%
▲ Al Salam Group Holding Co.	SAGH.KW	NM	0.35	0.00%	1.30	0.032	0.000	8.7	0.037	0.024	27.8%	3,930,857	127,098	329.0%	NM
= Ekttitab Holding Co.	EKTT.KW	NM	0.49	0.00%	0.97	0.021	0.000	6.6	0.024	0.015	37.7%	678,823	14,038	203.5%	NM
= Al Madina For Finance & Investment Co.	MADI.KW	1.8	0.43	0.00%	1.18	0.016	0.000	6.6	0.019	0.015	3.2%	0	0	105.7%	23.8%
▼ NOOR Financial Investment Co.	NOOR.KW	9.2	1.86	1.71%	1.21	0.361	(0.002)	144.3	0.399	0.168	112.4%	482,579	174,473	38.7%	20.2%
= Tamdeen Investment Co.	TAMI.KW	NM	0.55	0.00%	0.34	0.389	0.000	134.2	0.414	0.200	25.5%	0	0	3.7%	NM
▲ Kuwait Syrian Holding Co.	KSHC.KW	29.2	1.27	0.00%	0.68	0.051	0.002	9.0	0.060	0.025	59.9%	4,709,562	239,862	39.3%	4.3%
= Asiya Capital Investment Co.	ASIYA.KW	35.2	0.58	0.00%	0.52	0.052	0.000	41.6	0.057	0.034	41.7%	820,004	41,796	62.1%	1.6%
▲ Gulf North Africa Holding Co.	GNAH.KW	73.5	1.19	0.00%	1.03	0.087	0.001	13.0	0.085	0.057	32.7%	329,827	28,594	22.3%	1.6%
▲ Alimtiyaz Investment Group	ALIMK.KW	NM	0.78	0.00%	0.98	0.127	0.001	144.0	0.142	0.106	13.4%	1,176,256	148,943	105.9%	NM
▲ Manazel Holding Co.	MANK.KW	30.9	1.18	0.00%	1.36	0.057	0.003	24.5	0.060	0.031	79.8%	14,362,026	804,309	265.7%	3.8%
▼ National Industries Group	NIND.KW	7.3	1.06	0.00%	1.44	0.284	(0.003)	405.5	0.296	0.165	61.4%	4,469,844	1,275,801	107.1%	14.5%
▲ Warba Capital Holding Co.	WARBACAP.KW	NM	0.71	0.00%	0.68	0.113	0.003	5.7	0.145	0.045	132.5%	20,100	2,131	128.1%	NM
= Arabi Holding Group Co.	AGHC.KW	45.1	1.03	0.00%	0.15	0.181	0.000	31.3	0.228	0.102	(8.6%)	631,873	113,171	87.3%	2.3%
▲ Privatization Holding Co.	KPPC.KW	21.4	0.48	0.00%	0.79	0.062	0.000	37.5	0.070	0.039	53.4%	3,698,874	226,057	227.8%	2.2%
▲ Credit Rating & Collection Co.	TAHS.KW	NM	1.88	0.00%	0.00	0.055	0.003	9.0	0.057	0.020	148.6%	3,372,390	184,031	22.3%	NM
▲ Egypt Kuwait Holding Co.	EKKH.KW	13.8	2.86	0.00%	0.18	0.453	0.007	510.5	0.465	0.293	40.4%	319,111	144,401	5.5%	20.7%
▲ GFH Financial Group	GFH.KW	18.9	1.36	1.80%	0.86	0.101	0.003	381.4	0.104	0.047	115.4%	124,809,381	12,659,193	93.1%	7.2%
▲ Inovest	INOV.KW	NM	0.83	0.00%	0.74	0.117	0.004	35.2	0.134	0.063	78.4%	1,756,525	202,194	293.3%	NM
▲ Al Bareeq Holding	BAREEQ.KW	NM	0.70	0.00%	NA	0.042	0.001	31.7	0.102	0.034	(35.9%)	11,254,931	474,295	162.3%	NM
▲ Amar For Finance and Leasing Co.	AMARF.KW	14.8	0.84	0.00%	0.08	0.075	0.001	15.0	0.097	0.039	53.6%	927,504	68,643	30.5%	5.6%
▲ Al-Manar Financing & Leasing Co.	ALMANAR.KW	NM	0.77	0.00%	0.53	0.076	0.003	23.5	0.085	0.048	53.6%	1,448,847	108,981	34.2%	NM
▼ Boursa Kuwait Securities Co	BOURSA.KW	14.1	7.50	2.04%	0.75	1.965	(0.020)	394.5	2.432	1.091	78.6%	273,877	541,124	44.8%	53.2%
Financial Services		13.6	1.27	0.98%				4,181.2			54.8%	221,579,712	22,668,087		9.3%

Boursa Kuwait Daily Bulletin

Wednesday, November 17, 2021

Company	Reuters Ticker	Valuation Multiples				Price (KWD)		MKT Cap (KWD Mn.)	52 Weeks High (KWD)	52 Weeks Low (KWD)	YTD-21 Return #	Daily Trading Data		YTD-21 Capital Turnover	ROE
		Trailing P/E (X)	Trailing P/BV (X)	Dividend Yield	Beta	Closing	DTD Change					Volume (Shrs.)	Value (KWD)		
▲ Automated Systems Co.	ASCK.KW	NM	0.90	0.00%	0.17	0.106	0.002	10.6	0.122	0.068	53.4%	500	53	38.4%	NM
Technology		NM	0.90	0.00%				10.6			53.4%	500	53		NM
= Shamal Az-Zour Al-Oula Power and Water Co.	AZNOULA.KW	20.7	5.00	5.02%	0.67	0.239	0.000	262.9	0.276	0.220	(13.7%)	1,367,317	326,601	38.0%	24.2%
Utilities		20.7	5.00	5.02%				262.9			(13.7%)	1,367,317	326,601		24.2%
Boursa Kuwait		28.9	1.83	1.56%				43,158.9			30.79%	517,640,221	73,295,176		6.3%

Year-to-Date 2021 Top Movers & Most Active Stocks

YTD Top % Gainers	Close (KWD)	Percent Change	YTD Top % Losers	Close (KWD)	Percent Change
Real Estate Trade Centers Co.	0.115	316.7%	Yiaco Medical Co.	0.448	(46.7%)
Al Eid Food Co.	0.281	306.3%	Al Bareeq Holding	0.042	(35.9%)
Gulf Investment House	0.309	271.4%	Al Kout for Industrial Projects Co.	0.449	(33.5%)
National Real Estate Co.	0.233	256.9%	National Petroleum Services Co.	0.790	(24.7%)
IFA Hotels & Resorts Co.	0.068	246.2%	Land United Real Estate Co.	0.103	(20.2%)
YTD Most Active by Volume	Close (KWD)	Volume (Shrs.)	YTD Most Active by Value	Close (KWD)	Value (KWD)
GFH Financial Group	0.101	3,516,689,929	Kuwait Finance House	0.843	1,036,272,122
Ahli United Bank - Bahrain	0.289	3,380,186,029	National Bank of Kuwait	1.038	947,052,568
First Investment Co.	0.084	3,246,686,211	Ahli United Bank - Bahrain	0.289	801,294,130
AAN Digital Services Co.	0.019	2,872,071,812	Agility (PWC Logistics)	1.043	614,779,286
MAZAYA Holding Co.	0.082	2,750,384,051	Gulf Bank	0.262	529,717,945

* Different Fiscal Year Company

Disclaimer & Important Disclosures

Kamco Invest is authorized and fully regulated by the Capital Markets Authority ("CMA, Kuwait") and partially regulated by the Central Bank of Kuwait ("CBK").

This document is provided for informational purposes only. Nothing contained in this document constitutes investment, an offer to invest, legal, tax or other advice or guidance and should be disregarded when considering or making investment decisions. In preparing this document, Kamco Invest did not take into account the investment objectives, financial situation and particular needs of any particular person. Accordingly, before acting on this document, investors should independently evaluate the investments and strategies referred to herein and make their own determination of whether it is appropriate in light of their own financial circumstances and objectives. The entire content of this document is subject to copyright with all rights reserved. This research and the information contained herein may not be reproduced, distributed or transmitted in Kuwait or in any other jurisdiction to any other person or incorporated in any way into another document or other material without our prior written consent.

Analyst Certification

Each of the analysts identified in this report, if any and where applicable, certifies, with respect to the sector, companies or securities that the individual analyses, that (1) the views expressed in this report reflect his or her personal views about all of the subject companies and securities and (2) no part of his or her compensation was, is or will be directly or indirectly dependent on the specific recommendations or views expressed in this report.

Kamco Invest Ratings

Kamco Invest research is based on the analysis of regional and country economics, industries and company fundamentals. Kamco Invest company research reflects a long-term (12-month) target price for a company or stock. The ratings bands are:

* **Outperform:** Target Price represents expected returns >= 10% in the next 12 months

* **Neutral:** Target Price represents expected returns between -10% and +10% in the next 12 months

* **Underperform:** Target Price represents an expected return of <-10% in the next 12 months

In certain circumstances, ratings may differ from those implied by a fair value target using the criteria above. Kamco Invest policy is to maintain up-to-date fair value targets on the companies under its coverage, reflecting any material changes to the analyst's outlook on a company. Share price volatility may cause a stock to move outside the rating range implied by Kamco Invest's fair value target. Analysts may not necessarily change their ratings if this happens, but are expected to disclose the rationale behind their view to Kamco Invest clients.

Any terms and conditions proposed by you which are in addition to or which conflict with this Disclaimer are expressly rejected by Kamco Invest and shall be of no force or effect. The information contained in this document is based on current trade, statistical and other public information we consider reliable. We do not represent or warrant that such information is fair, accurate or complete and it should not be relied upon as such. Kamco Invest has no obligation to update, modify or amend this document or to otherwise notify a recipient thereof in the event that any opinion, forecast or estimate set forth herein, changes or subsequently becomes inaccurate. The publication is provided for informational uses only and is not intended for trading purposes. The information on publications does not give rise to any legally binding obligation and/or agreement, including without limitation any obligation to update such information. You shall be responsible for conducting your own investigation and analysis of the information contained or referred to in this document and of evaluating the merits and risks involved in the securities forming the subject matter of this or other such document. Moreover, the provision of certain data/information in the publication may be subject to the terms and conditions of other agreements to which Kamco Invest is a party.

Nothing in this document should be construed as a solicitation or offer, or recommendation, to acquire or dispose of any investment or to engage in any other transaction, or to provide any investment advice or service. This document is directed at Professional Clients and not Retail Clients within the meaning of CMA rules. Any other persons in receipt of this document must not rely upon or otherwise act upon it. Entities and individuals

*Kamco Investment Company (DIFC) Limited ("Kamco Invest DIFC"), Office 205, Level 2, Gate Village 1, Dubai International Financial Centre, a wholly owned subsidiary of Kamco Investment Company KSC (Public), is regulated by the Dubai Financial Services Authority (DFSA). Kamco Invest DIFC may only undertake the financial services activities that fall within the scope of its existing DFSA licence. The information in this document may be distributed by Kamco Invest DIFC on behalf of Kamco Investment Company KSC (Public). This document is intended for Professional Clients or Market Counterparties only as defined by the DFSA, and no other person should act upon it.

This document may not be distributed in Saudi Arabia except to such persons as are permitted under the Offers of Securities Regulations issued by the Capital Market Authority. The Capital Market Authority does not make any representation as to the accuracy or completeness of this document, and expressly disclaims any liability whatsoever for any loss arising from, or incurred in reliance upon, any part of this document. The recipients of this document hereby should conduct their own due diligence on the accuracy of the information relating to the contents of this document. If you do not understand the contents of this document you should consult an authorized financial advisor.

Risk Warnings

Any prices, valuations or forecasts are indicative and are not intended to predict actual results, which may differ substantially from those reflected. The value of an investment may go up as well as down. The value of and income from any investment may fluctuate from day to day as a result of changes in relevant economic markets (including, without limitation, foreseeable or unforeseeable changes in interest rates, foreign exchange rates, default rates, prepayment rates, political or financial conditions, etc.).

Past performance is not indicative of future results. Any opinions, estimates, valuations or projections (target prices and ratings in particular) are inherently imprecise and a matter of judgment. They are statements of opinion and not of fact, based on current expectations, estimates and projections, and rely on beliefs and assumptions. Actual outcomes and returns may differ materially from what is expressed or forecasted. There are no guarantees of future performance. Certain transactions, including those involving futures, options, and other derivatives, give rise to substantial risk and are not suitable for all investors. This document does not propose to identify or to suggest all of the risks (direct or indirect) which may be associated with the investments and strategies referred to herein.

Conflict of Interest

Kamco Invest and its affiliates provide full investment banking services, and they and their directors, officers and employees, may take positions which conflict with the views expressed in this document. Salespeople, traders, and other professionals of Kamco Invest may provide oral or written market commentary or trading strategies to our clients and our proprietary trading desks that reflect opinions that are contrary to the opinions expressed in this document. Our asset management area, our proprietary trading desks and investing businesses may make investment decisions that are inconsistent with the recommendations or views expressed in this document. Kamco Invest may have or seek investment relationships for which it will receive compensation from the companies that are the subject of this document. Facts and views presented in this document have not been reviewed by, and may not reflect information known to, professionals in other Kamco Invest business areas, including investment banking personnel. United Gulf Bank, Bahrain owns majority of Kamco Invest's shareholding and this ownership may create, or may create the appearance of, conflicts of interest.

No Liability & Warranty

Kamco Invest makes neither implied nor expressed representations or warranties and, to the fullest extent permitted by applicable law, we hereby expressly disclaim any and all express, implied and statutory representations and warranties of any kind, including, without limitation, any warranty as to accuracy, timeliness, completeness, and fitness for a particular purpose and/or non-infringement. Kamco Invest will accept no liability in any event including (without limitation) your reliance on the information contained in this document, any negligence for any damages or loss of any kind, including (without limitation) direct, indirect, incidental, special or consequential damages, expenses or losses arising out of, or in connection with your use or inability to use this document, or in connection with any error, omission, defect, computer virus or system failure, or loss of any profit, goodwill or