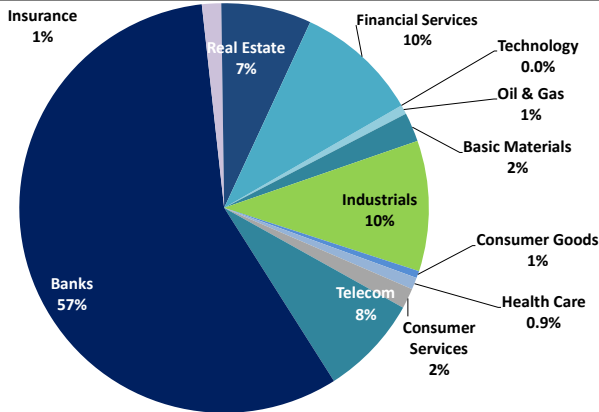


Boursa Kuwait Daily Report

November 15, 2021

Sector Weight by Market Cap



Top 10 Companies by Market Capitalization

Company Name	Market Cap. (Mn KWD)	P/E (X)	ROE* (%)
1- National Bank of Kuwait	7,408.5	25.0	8.9%
2- Kuwait Finance House	7,082.5	36.6	10.3%
3- Ahli United Bank - Bahrain	2,898.5	21.2	10.8%
4- Boubyan Bank	2,594.6	67.0	7.1%
5- Zain	2,578.9	13.8	16.2%
6- Agility (PWC Logistics)	2,308.2	30.1	6.5%
7- Commercial Bank of Kuwait	1,000.0	55.8	2.3%
8- Mabanee Co.	974.6	21.0	9.3%
9- Gulf Bank	786.4	23.4	5.2%
10- Ahli United Bank - Kuwait	769.5	25.6	6.6%
Total	28,402	26.87	9.0%

*: ROE is calculated based on TTM 1H-2021 net profit & shareholders' equity as of 30-June-21

Top Movers and Most Active Stocks

Today's Top % Gainers	Close (KWD)	Change (KWD)	Percent Change
Kuwait Syrian Holding Co.	0.054	0.006	12.7%
Munshaat Real Estate Projects Co.	0.074	0.007	11.1%
First Takaful Insurance Co.	0.067	0.006	9.8%
Kuwait Remal Real Estate Co.	0.021	0.002	7.7%
Kuwait Real Estate Holding Co.	0.053	0.003	5.4%




Today's Top % Losers	Close (KWD)	Change (KWD)	Percent Change
Privatization Holding Co.	0.061	(0.005)	(6.9%)
Al Massaleh Real Estate Co.	0.053	(0.004)	(6.9%)
Advanced Technology Co.	0.507	(0.032)	(5.9%)
Wethaq Takaful Insurance Co.	0.059	(0.004)	(5.7%)
MENA Real Estate Co.	0.084	(0.005)	(5.4%)

Today's Most Active by Volume	Close (KWD)	Percent Change	Volume (Shares)
GFH Financial Group	0.092	0.3%	73,342,697
AAN Digital Services Co.	0.019	(0.5%)	35,661,278
National Real Estate Co.	0.224	(1.8%)	26,417,166
Ahli United Bank - Bahrain	0.286	(1.4%)	13,313,498
Al Bareeq Holding	0.040	(0.5%)	13,166,586

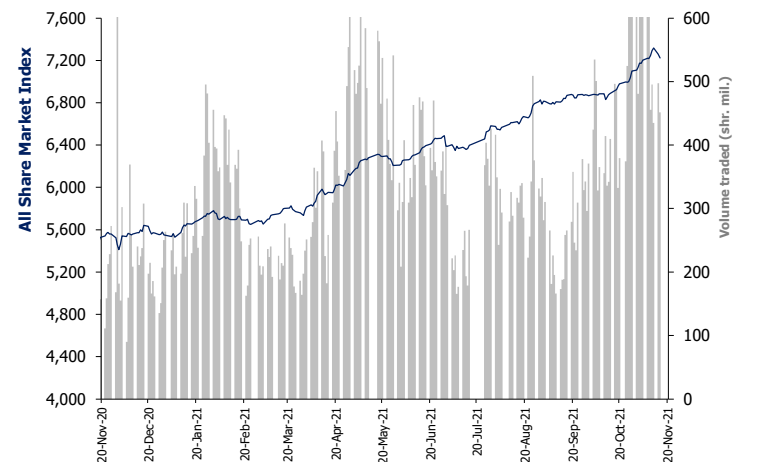
Source: Boursa Kuwait, Kamco Invest Research

Market Capitalization - Sector Returns

	Market Cap. (KWD Mn)	DTD %	MTD %	YTD %
Boursa Kuwait	42,878.7	(0.5%)	1.8%	29.9%
Oil & Gas	311.4	1.0%	2.5%	11.1%
Basic Materials	975.7	(0.3%)	(0.5%)	21.8%
Industrials	4,390.6	(1.4%)	2.3%	38.3%
Consumer Goods	240.6	(0.3%)	(1.6%)	3.7%
Health Care	393.7	(1.2%)	(0.1%)	(3.9%)
Consumer Services	685.7	(0.7%)	8.2%	63.5%
Telecommunications	3,371.6	(0.2%)	(0.3%)	(0.2%)
Banks	24,399.2	(0.4%)	2.0%	29.7%
Insurance	648.3	(0.0%)	8.6%	51.4%
Real Estate	3,043.7	(1.2%)	1.8%	48.2%
Financial Services	4,144.0	(0.0%)	1.4%	53.4%
Technology	10.3	(4.6%)	(2.8%)	49.1%
Utilities	264.0	-0.8%	1.7%	-13.4%

Market Breadth	 37	 98	 32		
Benchmark Return	Closing	DTD	DTD	MTD	YTD
	Value	Chg	% Chg	% Chg	% Chg
Premier Market Index	7,817.89	(46.5)	(0.6%)	1.6%	29.2%
Main 50 Index	6,248.74	(24.0)	(0.4%)	1.3%	34.8%
Main Market Index	6,078.26	(15.0)	(0.2%)	1.7%	33.5%
All Share Market Index	7,224.15	(36.7)	(0.5%)	1.6%	30.3%
Market Cap (KWD Mn)	42,878.74	(219.3)	(0.5%)	1.8%	29.9%

Index Performance relative to Volume



Market Trading Data and Volatility

Trading Indicators	Today's Value	DTD Chg	DTD %	Average Daily YTD 2021	YTD 2020
Volume (Shrs Mn)	451.7	(45.4)	(9.1%)	352.4	209.7
Value Traded (KWD Mn)	80.1	(19.32)	(19.4%)	55.2	39.5
No. of Trades	17,770	(1,279)	(6.7%)	12,622	9,340

Today's Most Active by Value	Close (KWD)	Percent Change	Value (KWD)
National Bank of Kuwait	1.030	(0.1%)	10,069,632
Kuwait Finance House	0.839	(0.2%)	9,906,146
GFH Financial Group	0.092	0.3%	6,743,371
National Real Estate Co.	0.224	(1.8%)	5,959,918
Agility (PWC Logistics)	1.035	(2.2%)	4,789,749

Boursa Kuwait - Premier Market

Monday, November 15, 2021

	Premier Market Stocks	Closing Price			Market Capitalization			Valuation Multiples				ROE	YTD-21 Price Return	YTD-21 Trading Indicators	
		KWD	DTD Chg. (KWD)	D-T-D Return	KWD Mn	Weight in Premier Index	Weight in Boursa Kuwait	P/E (X)	P/BV (X)	Yield	Beta			Volume (Mn Shrs)	Value (KWD Mn)
▼	National Bank of Kuwait	1.030	(0.001)	(0.1%)	7,408	23.2%	17.3%	25.0	2.22	1.8%	1.27	8.9%	28.8%	1,069.89	935.56
▼	Gulf Bank	0.258	(0.001)	(0.4%)	786	2.5%	1.8%	23.4	1.22	1.8%	1.13	5.2%	17.8%	2,279.83	526.75
▼	Kuwait International Bank	0.223	(0.001)	(0.4%)	253	0.8%	0.6%	NM	0.98	0.0%	1.01	0.8%	7.2%	1,079.14	236.10
▼	Burgan Bank	0.231	(0.003)	(1.3%)	723	2.3%	1.7%	20.7	1.07	1.8%	1.05	5.1%	29.4%	538.82	121.42
▼	Kuwait Finance House	0.839	(0.002)	(0.2%)	7,082	22.2%	16.5%	36.6	3.78	1.1%	1.40	10.3%	36.3%	1,347.25	1,026.24
=	Boubyan Bank	0.816	0.000	0.0%	2,595	8.1%	6.1%	67.0	4.79	0.0%	1.05	7.1%	50.8%	258.12	172.52
=	National Investments Co	0.240	0.000	0.0%	210	0.7%	0.5%	8.7	1.11	4.2%	1.25	12.8%	77.8%	444.04	81.02
=	Kuwait Projects Co. (Holding)	0.141	0.000	0.0%	282	0.9%	0.7%	NM	1.36	3.5%	0.59	0.3%	(11.3%)	355.72	53.92
▼	Al Imtiaz Investment Group	0.125	(0.002)	(1.6%)	142	0.4%	0.3%	NM	0.76	0.0%	0.98	NM	11.6%	1,197.55	148.65
▼	Kuwait Real Estate Co.	0.179	(0.002)	(1.1%)	170	0.5%	0.4%	34.7	1.31	0.0%	0.97	3.8%	72.4%	2,141.78	298.37
▼	Mabane Co.	0.832	(0.018)	(2.1%)	975	3.0%	2.3%	21.0	1.95	0.7%	1.11	9.3%	34.2%	141.88	103.17
▲	National Industries Group (Holding)	0.289	0.001	0.3%	413	1.3%	1.0%	7.4	1.08	0.0%	1.44	14.5%	64.2%	1,517.97	344.53
▼	Gulf Cable and Electrical Industries	0.975	(0.014)	(1.4%)	205	0.6%	0.5%	36.5	1.10	5.1%	0.94	3.0%	29.1%	61.90	50.76
▼	Boubyan Petrochemical Co.	0.921	(0.001)	(0.1%)	493	1.5%	1.1%	26.2	2.17	5.8%	0.72	8.3%	43.9%	102.42	88.07
▼	Qurain Petrochemicals Industries Co.	0.374	(0.002)	(0.5%)	411	1.3%	1.0%	30.0	0.98	4.0%	0.75	3.3%	10.7%	137.50	52.72
▼	Agility Public Warehousing Co.	1.035	(0.023)	(2.2%)	2,308	7.2%	5.4%	30.1	1.97	0.8%	1.48	6.5%	68.4%	679.45	608.97
▼	Mobile Telecommunications Co.	0.596	(0.002)	(0.3%)	2,579	8.1%	6.0%	13.8	2.23	3.4%	1.35	16.2%	(1.7%)	671.82	407.82
▼	Human Soft Holding Co.	3.216	(0.044)	(1.3%)	393	1.2%	0.9%	5.9	3.70	12.4%	0.49	63.0%	(15.3%)	51.14	183.74
▼	ALAFCO Aviation Lease and Finance Co.	0.250	(0.002)	(0.8%)	238	0.7%	0.6%	NM	0.80	0.0%	0.87	NM	15.7%	476.62	107.71
▼	Ahli United Bank (B.S.C)	0.286	(0.004)	(1.4%)	2,898	9.1%	6.8%	21.2	2.30	1.3%	1.13	10.8%	31.1%	3,365.90	797.15
▼	Warba Bank	0.292	(0.005)	(1.7%)	460	1.4%	1.1%	17.3	2.32	0.0%	0.99	13.4%	23.7%	622.64	160.39
▲	Mezzan Holding Co.	0.617	0.002	0.3%	196	0.6%	0.5%	19.5	1.77	2.8%	0.44	9.1%	3.5%	99.08	60.96
▼	Integrated holding Co.	0.377	(0.009)	(2.3%)	95	0.3%	0.2%	NM	1.58	0.0%	0.47	NM	3.0%	273.26	106.99
▼	Shamal Az-Zour Al-Oula Power and Water	0.240	(0.002)	(0.8%)	264	0.8%	0.6%	20.8	5.02	5.0%	0.68	24.2%	(13.4%)	415.50	103.69
▼	Boursa Kuwait Securities Co.	1.950	(0.030)	(1.5%)	392	1.2%	0.9%	14.0	7.44	2.1%	0.74	53.2%	77.3%	89.17	121.78
Subtotal- Premier Market Stocks		7,817.89	(46.52)	-0.6%	31,970	100%	75%	24.7	2.25	1.68%		9.1%	29.2%	19,418.37	6,898.99
Remaining of the Market					10,908		25%	55.9	1.16	1.24%		2.1%		55,285.30	4,802.63

Source: Kamco Invest Research

Boursa Kuwait Daily Bulletin

Monday, November 15, 2021

Company	Reuters Ticker	Valuation Multiples				Price (KWD)		MKT Cap (KWD Mn.)	52 Weeks High (KWD)	52 Weeks Low (KWD)	YTD-21 Return #	Daily Trading Data		YTD-21 Capital Turnover	ROE
		Trailing P/E (X)	Trailing P/BV (X)	Dividend Yield	Beta	Closing	DTD Change					Volume (Shrs.)	Value (KWD)		
▼ Senergy Holding Co.	SENE.KW	NM	1.08	0.00%	1.12	0.053	(0.000)	10.6	0.063	0.021	149.5%	1,410,682	73,369	175.0%	NM
= Independent Petroleum Group	IPGK.KW	16.0	1.14	4.76%	0.26	0.605	0.000	114.0	0.669	0.447	27.4%	0	0	1.8%	7.2%
▲ National Petroleum Services Co.	NAPS.KW	15.0	2.32	7.36%	0.20	0.844	0.023	84.4	1.150	0.709	(19.5%)	13,037	10,372	1.4%	15.4%
▲ The Energy House Co.	ENER.KW	28.0	2.39	0.00%	0.97	0.065	0.002	48.8	0.086	0.025	128.9%	796,290	50,087	9.0%	8.6%
▼ Gulf Petroleum Investment	GPIK.KW	NM	0.38	0.00%	1.08	0.027	(0.000)	12.4	0.031	0.018	40.9%	4,856,455	131,693	381.8%	NM
▼ Burgan Co. for Drilling, Tdg. & Maint. *	ABAR.KW	16.3	0.62	1.70%	NA	0.170	(0.001)	41.3	0.207	0.127	9.7%	34,310	5,783	149.3%	3.8%
Oil & Gas		31.5	1.17	3.96%				311.4			11.1%	7,110,774	271,304		3.7%
▼ Kuwait Foundry Co.	KFDC.KW	NM	1.88	1.89%	0.63	0.370	(0.004)	26.8	0.430	0.258	38.1%	26,162	9,573	13.7%	NM
▼ Boubyan Petrochemicals Co.*	BPCC.KW	26.2	2.17	5.81%	0.72	0.921	(0.001)	492.6	0.987	0.625	43.9%	313,619	288,645	19.1%	8.3%
= Al Kout for Industrial Projects Co.	ALKK.KW	NM	1.87	4.45%	0.03	0.449	0.000	45.3	0.675	0.449	(33.5%)	0	0	0.0%	NM
▼ Qurain Petrochemical Industries Co. *	ALQK.KW	30.0	0.98	4.05%	0.75	0.374	(0.002)	411.1	0.447	0.334	10.7%	225,327	84,174	12.5%	3.3%
Basic Materials		31.8	1.43	4.90%				975.7			21.8%	565,108	382,392		4.5%
▼ Specialities Group Holding Co.	SPEC.KW	55.4	0.78	0.00%	0.43	0.140	(0.001)	23.1	0.169	0.073	78.8%	1,774,255	249,359	289.0%	1.4%
▼ Kuwait Cement Co.	KCEM.KW	NM	0.93	0.00%	0.52	0.243	(0.001)	178.2	0.266	0.215	5.2%	123,843	30,049	9.2%	NM
▼ Gulf Cable & Electrical Ind. Co.	CABL.KW	36.5	1.10	5.13%	0.94	0.975	(0.014)	204.7	1.011	0.728	29.1%	613,874	596,284	29.5%	3.0%
▲ Heavy Eng'g Ind. & Shipbuilding Co.	SHIP.KW	12.1	1.30	4.24%	0.59	0.472	0.002	85.1	0.524	0.392	18.9%	311,482	146,039	79.0%	10.7%
▲ Kuwait Portland Cement Co.	PCEM.KW	13.7	1.47	3.92%	0.46	1.020	0.030	102.2	1.050	0.766	29.9%	3,317	3,287	15.0%	10.7%
= Shuaiba Industrial Co.	PAPE.KW	16.5	1.20	4.58%	0.13	0.215	0.000	21.6	0.223	0.145	38.7%	3,970	822	4.9%	7.3%
▲ Metal & Recycling Co.	MRCK.KW	NM	1.58	0.00%	0.19	0.106	0.001	12.4	0.196	0.051	99.6%	17,220	1,810	14.5%	NM
▼ ACICO Industries Co.	ACIC.KW	NM	0.52	0.00%	0.38	0.130	(0.002)	39.2	0.143	0.082	44.6%	3,910,098	513,897	67.5%	NM
= Hilal Cement Co.	HCCK.KW	NM	0.74	0.00%	0.10	0.140	0.000	7.0	0.180	0.069	53.8%	0	0	2.3%	NM
= National Industries Co.	NIBM.KW	23.1	0.83	0.00%	0.17	0.200	0.000	74.5	0.218	0.150	28.2%	33,488	6,603	4.3%	3.6%
▼ Equipment Holding Co.	EQUI.KW	NM	1.06	0.00%	1.01	0.072	(0.001)	5.8	0.079	0.027	143.2%	2,074,027	149,181	224.2%	NM
▼ National Co. for Consumer Industries	NCCI.KW	NM	1.80	0.00%	NA	0.143	(0.004)	12.9	0.198	0.038	192.4%	3,257,755	463,198	680.8%	NM
▼ Salbookh Trading Co.	SALB.KW	NM	1.00	0.00%	0.59	0.054	(0.003)	5.6	0.072	0.035	41.9%	1,435,260	76,470	232.8%	NM
▼ Agility (PWC Logistics)	AGLT.KW	30.1	1.97	0.84%	1.48	1.035	(0.023)	2,308.2	1.090	0.592	68.4%	4,599,740	4,789,749	30.5%	6.5%
▼ Educational Holding Group*	EDUK.KW	9.0	1.75	0.00%	0.46	0.693	(0.001)	66.0	0.900	0.433	111.3%	96,629	66,978	19.3%	19.5%
▲ National Cleaning Co.	CLEA.KW	NM	0.48	0.00%	0.80	0.065	0.001	16.1	0.080	0.045	20.6%	3,000,631	188,510	114.7%	NM
▲ Kuwait & Gulf Link Transport Co.	KGLK.KW	NM	0.55	0.00%	0.78	0.079	0.001	23.0	0.106	0.044	49.6%	2,468,119	189,435	67.5%	NM
▼ Kuwait Co. For Process Plant Const. & Cont.	KCPC.KW	8.5	2.06	7.72%	0.48	0.538	(0.003)	62.3	0.629	0.367	40.2%	10,676	5,602	25.3%	24.3%
▼ Humansoft Holding Co.	HUMN.KW	5.9	3.70	12.38%	0.49	3.216	(0.044)	393.1	4.030	3.200	(15.3%)	369,692	1,191,695	41.8%	63.0%
▼ Gulf Franchising Co.	GFCI.KW	6.7	1.65	0.00%	NA	0.089	(0.001)	3.6	0.115	0.032	48.3%	6,550	556	4.2%	24.6%
= National Shooting Co.	SHOOTING.KW	NM	0.71	0.00%	1.21	0.039	0.000	10.9	0.043	0.019	108.6%	0	0	98.6%	NM
▲ Combined Group Contracting Co.	CGCK.KW	NM	1.59	1.66%	0.65	0.360	0.001	61.8	0.399	0.196	79.1%	792,802	282,169	91.7%	NM
▲ United Projects Group	UPAC.KW	NM	1.12	0.00%	0.05	0.298	0.001	114.0	0.365	0.186	2.8%	5,350	1,526	8.7%	0.9%
▼ ALAFCO Aviation Lease & Finance Co.*	ALAF.KW	NM	0.80	0.00%	0.87	0.250	(0.002)	238.0	0.256	0.198	15.7%	2,541,902	631,267	50.1%	NM
▼ Mubarrad Holding Co.	MBRD.KW	29.7	0.93	0.00%	0.95	0.117	(0.001)	19.2	0.130	0.063	63.6%	1,742,816	200,726	249.8%	3.1%
= KGL Logistics Co.	LOGK.KW	NM	0.25	0.00%	0.77	0.032	0.000	23.4	0.034	0.027	12.8%	0	0	21.7%	NM
▼ Integrated holding Co.	INTEGRATED.KW	NM	1.58	0.00%	0.47	0.377	(0.009)	95.4	0.399	0.310	3.0%	3,158,053	1,197,941	108.0%	NM
= Umm Al-Qaiwain General Investments Co.	QIC.KW	9.9	0.67	5.05%	0.18	0.099	0.000	35.9	0.099	0.063	32.0%	0	0	1.2%	6.8%
▼ Fujairah Cement Industries Co.	FCEM.KW	NM	0.28	0.00%	0.46	0.057	(0.002)	20.1	0.069	0.028	65.5%	586,270	32,861	20.1%	NM
▼ Ras-Al-Khaimah for White Cement Co.	RKWC.KW	29.1	1.07	3.76%	0.14	0.133	(0.001)	66.5	0.175	0.061	104.6%	14,162	1,884	4.8%	3.7%
▼ Jassim Transport & Stevedoring Co.	JTC.KW	26.4	1.46	4.94%	NA	0.405	(0.004)	60.8	0.450	0.395	0.0%	39,502	16,018	24.7%	5.5%
Industrials		33.8	1.44	2.29%				4,390.6			38.3%	32,991,483.0	11,033,918		4.3%

Boursa Kuwait Daily Bulletin

Monday, November 15, 2021

Company	Reuters Ticker	Valuation Multiples				Price (KWD)		MKT Cap (KWD Mn.)	52 Weeks High (KWD)	52 Weeks Low (KWD)	YTD-21 Return #	Daily Trading Data		YTD-21 Capital Turnover	ROE
		Trailing P/E (X)	Trailing P/BV (X)	Dividend Yield	Beta	Closing	DTD Change					Volume (Shrs.)	Value (KWD)		
Palms Agro Production Co.	PAPK.KW	NM	0.63	0.00%	0.26	0.071	0.000	3.7	0.090	0.050	10.5%	0	0	2.0%	NM
Livestock Transport & Trading Co.	CATT.KW	NM	1.05	0.00%	0.26	0.189	(0.006)	40.9	0.210	0.177	7.4%	308,875	57,971	11.2%	NM
Mezzan Holding Co.	MEZZ.KW	19.5	1.77	2.81%	0.44	0.617	0.002	195.9	0.679	0.554	3.5%	290,562	179,052	31.2%	9.1%
Consumer Goods		35.4	1.54	2.29%				240.6			3.7%	599,437	237,023		4.4%
Advanced Technology Co.	ATCK.KW	13.2	1.21	2.96%	0.01	0.507	(0.032)	76.1	0.600	0.401	(11.1%)	29,950	15,235	1.0%	9.2%
Yiaco Medical Co.	YIAC.KW	NM	4.58	0.00%	NA	0.448	0.000	7.7	0.825	0.403	(46.7%)	0	0	1.4%	NM
Al-Maidan Clinic For Oral Health Services Co.	MIDAN.KW	31.6	19.05	0.81%	NA	1.240	0.000	310.0	1.240	1.200	0.0%	0	0	0.1%	60.3%
Health Care		25.5	4.88	1.21%				393.7			(3.9%)	29,950	15,235		19.1%
Kuwait National Cinema Co.	KCIN.KW	NM	1.35	0.00%	0.30	0.902	0.000	91.2	0.990	0.700	20.3%	0	0	1.3%	NM
Kuwait Hotels Co.	KHOT.KW	10.5	1.24	0.00%	NA	0.093	0.000	5.3	0.113	0.050	55.5%	0	0	20.0%	11.8%
Sultan Center Food Products Co.	SCFK.KW	52.2	1.54	0.00%	0.43	0.248	(0.010)	71.8	0.269	0.097	148.0%	3,828,367	942,698	64.7%	3.0%
IFA Hotels & Resorts Co.*	IFAH.KW	NM	8.96	0.00%	0.29	0.064	(0.002)	40.9	0.071	0.019	230.3%	1,361,606	87,246	135.6%	NM
Oula Fuel Marketing Co.	OULA.KW	13.7	0.94	3.06%	0.47	0.161	(0.002)	65.1	0.178	0.114	30.9%	927,623	148,859	23.6%	6.9%
Kuwait Resorts Co.	MUNK.KW	31.3	0.76	1.89%	0.71	0.106	0.003	22.3	0.112	0.060	67.7%	4,795,984	501,704	198.5%	2.4%
Jazeera Airways Co.	JAZK.KW	NM	186.00	0.00%	0.72	1.219	(0.001)	243.8	1.345	0.588	67.0%	645,883	786,985	49.7%	NM
Soor Fuel Marketing Co.	SOOR.KW	18.4	1.02	3.08%	0.47	0.161	(0.001)	65.2	0.175	0.116	32.0%	179,091	28,639	11.5%	5.5%
Future Kid Entertainment and R.E Co.	KIDK.KW	NM	0.85	0.00%	0.03	0.083	(0.001)	9.7	0.122	0.064	(1.9%)	1,091,072	89,715	180.2%	NM
Jiyad Holding Co	JIYAD.KW	NM	0.84	0.00%	0.65	0.088	0.001	30.6	0.099	0.036	97.5%	1,986,569	170,537	40.9%	NM
Al Eid Food Co.	ALEID.KW	21.4	2.01	1.52%	NA	0.275	(0.001)	39.8	0.310	0.069	297.6%	300,993	81,904	119.8%	9.4%
Consumer Services		NM	1.93	0.73%				685.7			63.5%	15,117,188	2,838,287		NM
Zain	ZAIN.KW	13.8	2.23	3.36%	1.35	0.596	(0.002)	2,578.9	0.641	0.581	(1.7%)	3,422,916	2,043,610	15.5%	16.2%
National Mobile Telecom Co.	OORE.KW	38.7	0.63	2.23%	0.47	0.668	0.005	336.7	0.711	0.620	6.5%	27,495	18,260	1.8%	1.6%
AAN digital services Co.	AAN.KW	NM	0.70	0.00%	1.32	0.019	(0.000)	16.4	0.020	0.011	51.6%	35,661,278	670,099	322.9%	NM
Kuwait Telecommunication Co.	STC.KW	13.1	2.06	6.98%	0.55	0.859	(0.003)	429.0	0.970	0.822	0.8%	35,905	30,892	4.9%	15.7%
Hayat Communications Co.	HAYK.KW	NM	0.98	0.00%	1.14	0.114	(0.005)	10.5	0.124	0.051	103.6%	445,761	51,396	150.9%	NM
Telecommunications		14.8	1.74	3.68%				3,371.6			(0.2%)	39,593,355	2,814,257		11.8%
National Bank of Kuwait	NBKK.KW	25.0	2.22	1.83%	1.27	1.030	(0.001)	7,408.5	1.057	0.792	28.8%	9,790,448	10,069,632	14.9%	8.9%
Gulf Bank	GBKK.KW	23.4	1.22	1.84%	1.13	0.258	(0.001)	786.4	0.265	0.205	17.8%	4,092,536	1,055,182	74.8%	5.2%
Commercial Bank of Kuwait	CBKK.KW	55.8	1.31	0.00%	0.38	0.502	0.002	1,000.0	0.605	0.485	0.4%	2,001	1,005	3.6%	2.3%
Ahli Bank of Kuwait	ABKK.KW	NM	0.83	0.00%	0.66	0.249	(0.007)	423.3	0.264	0.186	25.1%	1,188,317	295,352	12.1%	NM
Ahli United Bank - Kuwait	BKME.KW	25.6	1.68	0.00%	0.85	0.323	(0.001)	769.5	0.332	0.258	22.9%	702,915	227,552	5.2%	6.6%
Kuwait International Bank	KIBK.KW	NM	0.98	0.00%	1.01	0.223	(0.001)	252.6	0.233	0.198	7.2%	4,835,424	1,077,892	95.3%	0.8%
Burgan Bank	BURG.KW	20.7	1.07	1.81%	1.05	0.231	(0.003)	723.3	0.240	0.195	29.4%	2,647,161	348,053	17.2%	5.1%
Kuwait Finance House	KFH.KW	36.6	3.78	1.07%	1.40	0.839	(0.002)	7,082.5	0.849	0.611	36.3%	11,830,766	9,906,146	16.0%	10.3%
Boubyan Bank	BOUK.KW	67.0	4.79	0.00%	1.05	0.816	0.000	2,594.6	0.829	0.516	50.8%	975,075	792,946	8.1%	7.1%
Warba Bank	WARB.KW	17.3	2.32	0.00%	0.99	0.292	(0.005)	459.9	0.301	0.228	23.7%	5,095,998	1,491,589	39.5%	13.4%
Ahli United Bank - Bahrain	AUBK.KW	21.2	2.30	1.27%	1.13	0.286	(0.004)	2,898.5	0.297	0.204	31.1%	13,313,498	3,830,333	33.2%	10.8%
Banks		32.1	2.32	1.13%				24,399.2			29.7%	54,474,139	29,095,681		7.2%

Boursa Kuwait Daily Bulletin

Monday, November 15, 2021

Company	Reuters Ticker	Valuation Multiples				Price (KWD)		MKT Cap (KWD Mn.)	52 Weeks High (KWD)	52 Weeks Low (KWD)	YTD-21 Return #	Daily Trading Data		YTD-21 Capital Turnover	ROE
		Trailing P/E (X)	Trailing P/BV (X)	Dividend Yield	Beta	Closing	DTD Change					Volume (Shrs.)	Value (KWD)		
▲ Kuwait Insurance Co.	KINS.KW	7.4	0.72	7.25%	0.01	0.394	0.001	76.5	0.459	0.360	2.3%	983,311	384,964	11.8%	9.9%
▼ Gulf Insurance Group	GINS.KW	17.2	2.42	0.00%	0.07	1.101	(0.003)	313.3	1.171	0.536	36.4%	183,743	205,355	2.0%	14.1%
▲ Ahleiah Insurance Co.	AINS.KW	8.5	0.92	4.64%	0.13	0.505	0.001	111.4	0.561	0.419	12.8%	110	56	5.5%	10.8%
= Warba Insurance Co.	WINS.KW	11.3	0.74	4.57%	0.36	0.158	0.000	29.1	0.176	0.077	95.6%	1,166,359	183,540	95.9%	6.5%
= Kuwait Reinsurance Co.	KWRE.KW	13.7	1.28	1.32%	0.14	0.350	0.000	77.1	0.527	0.212	80.9%	0	0	0.1%	9.4%
▲ First Takaful Insurance Co.	FTIK.KW	NM	0.89	0.00%	0.34	0.067	0.006	7.1	0.081	0.034	81.1%	104,551	6,536	8.9%	NM
▼ Wethaq Takaful Insurance Co.	WETH.KW	29.2	0.54	0.00%	0.45	0.059	(0.004)	6.5	0.102	0.020	191.2%	2,237,667	127,261	324.8%	1.8%
= Bahrain Kuwait Insurance Co.	BKIK.KW	8.7	0.85	7.85%	0.02	0.191	0.000	27.3	0.000	0.000	(4.5%)	0	0	0.0%	9.7%
Insurance		12.4	1.28	2.34%				648.3			51.4%	4,675,741	907,712		10.3%
▼ Sokouk Holding Co.	SHCK.KW	NM	0.81	0.00%	1.15	0.034	(0.001)	20.0	0.038	0.022	44.6%	1,477,074	49,642	106.1%	NM
▼ Kuwait Real Estate Co.	KREK.KW	34.7	1.31	0.00%	0.97	0.179	(0.002)	169.6	0.187	0.100	72.4%	8,752,309	1,570,946	226.1%	3.8%
▼ United Real Estate Co.	UREK.KW	NM	0.53	0.00%	0.41	0.080	(0.002)	94.6	0.085	0.043	69.4%	353,053	28,062	11.6%	NM
▼ National Real Estate Co.	NREK.KW	37.0	1.34	0.00%	1.18	0.224	(0.004)	369.8	0.233	0.071	243.1%	26,417,166	5,959,918	128.1%	3.6%
▼ Salhia Real Estate Co.	SREK.KW	70.3	1.90	5.04%	0.34	0.574	(0.003)	294.3	0.607	0.501	14.1%	75,514	43,086	15.1%	2.7%
▲ Tamdeen Real Estate Co.	TAMK.KW	NM	0.86	0.00%	0.13	0.340	0.003	146.9	0.374	0.235	25.9%	171,848	58,380	6.1%	NM
= Ajial Real Estate Entertainment Co.	AREC.KW	21.3	0.47	0.00%	0.49	0.313	0.000	60.9	0.345	0.170	71.0%	181,400	56,849	14.2%	2.2%
▼ Al Massaleh Real Estate Co.	MREC.KW	NM	0.62	0.00%	0.28	0.053	(0.004)	12.5	0.085	0.030	55.0%	362,600	19,313	22.6%	NM
▼ Arab Real Estate Co.	ARAB.KW	18.2	0.44	0.00%	1.20	0.045	(0.001)	22.9	0.052	0.025	74.7%	3,756,281	165,975	102.0%	2.4%
▼ AL-Enma'a Real Estate Co.*	ENMA.KW	NM	0.83	0.00%	0.68	0.081	(0.002)	36.4	0.091	0.047	67.1%	3,645,415	288,809	111.9%	0.4%
▼ Mabanee Co.	MABK.KW	21.0	1.95	0.68%	1.11	0.832	(0.018)	974.6	0.868	0.611	34.2%	782,246	654,386	12.1%	9.3%
▼ Injazzat Real Estate Development Co.	INJA.KW	NM	0.71	0.00%	0.20	0.109	(0.001)	37.7	0.113	0.067	46.3%	5,523,000	595,813	118.5%	0.6%
▼ Investors Holding Group Co.	INVK.KW	NM	0.78	0.00%	1.20	0.016	(0.000)	9.8	0.020	0.013	(9.7%)	4,365,687	68,387	300.0%	NM
▼ The Commercial Real Estate Co.	TIJK.KW	61.7	0.88	2.13%	0.57	0.134	(0.001)	246.7	0.140	0.091	21.2%	805,041	107,148	48.4%	1.4%
▲ Sanam Real Estate Co.	SANK.KW	NM	0.96	0.00%	0.38	0.073	0.002	9.0	0.082	0.028	112.5%	1,687,255	120,238	62.0%	NM
▼ A'ayan Real Estate Co.	AYRE.KW	NM	0.68	0.00%	0.59	0.096	(0.001)	39.7	0.116	0.057	64.7%	1,085,921	103,906	129.0%	NM
▲ Aqar Real Estate Investment Co.	AQAR.KW	NM	0.79	0.00%	NA	0.085	0.001	20.9	0.098	0.058	43.7%	963,223	80,949	101.7%	NM
▲ Kuwait Real Estate Holding Co.	ALAQ.KW	11.0	0.98	0.00%	0.52	0.053	0.003	10.1	0.059	0.024	112.4%	638,617	32,089	61.5%	8.9%
▲ MAZAYA Holding Co.	MAZA.KW	NM	0.85	0.00%	0.99	0.080	0.000	55.3	0.122	0.056	40.4%	7,451,573	591,778	397.5%	NM
▼ Tijara Real Estate & Investment Co.	TIJA.KW	47.6	0.60	0.00%	0.31	0.064	(0.001)	23.6	0.073	0.042	52.1%	3,633,733	228,413	211.0%	1.3%
▲ Al TAMEER Real Estate Investment Co.	AMAR.KW	24.1	0.73	0.00%	0.97	0.046	0.000	11.1	0.052	0.018	131.0%	5,465,727	254,844	241.2%	3.0%
▲ Arkan Al-Kuwait Real Estate Co. *	ARKK.KW	22.4	1.11	2.68%	0.24	0.149	0.001	37.4	0.152	0.086	75.7%	194,124	28,511	14.9%	5.0%
▼ Al-Argan International Real Estate Co.	ARGK.KW	NM	0.40	0.00%	0.39	0.116	(0.003)	30.7	0.124	0.091	5.5%	2,000	232	1.4%	NM
▲ Munshaat Real Estate Projects Co.	MUNS.KW	NM	2.62	0.00%	0.63	0.074	0.007	23.8	0.121	0.045	5.0%	745,226	54,890	10.9%	NM
▼ First Dubai For Real Estate Development	FIRST.KW	NM	1.08	0.00%	1.44	0.080	(0.001)	79.9	0.088	0.040	94.9%	2,934,231	231,528	49.2%	1.2%
▼ Kuwait Business Town Real Estate Co.	KBTK.KW	NM	0.84	0.00%	1.09	0.087	(0.001)	52.7	0.104	0.038	120.3%	1,831,797	157,994	93.5%	NM
= Real Estate Asset Management Co.	REAM.KW	NM	0.69	0.00%	0.09	0.090	0.000	9.9	0.000	0.000	0.0%	0	0	0.0%	NM
▼ MENA Real Estate Co. *	MENK.KW	NM	0.72	0.00%	0.98	0.084	(0.005)	11.5	0.105	0.027	202.2%	6,089,714	516,300	562.6%	NM
= Al Mudon International Real Estate Co.	ALMK.KW	NM	0.17	0.00%	0.83	0.021	0.000	2.1	0.027	0.019	14.4%	0	0	110.8%	NM
▼ Real Estate Trade Centers Co.	MARA.KW	NM	0.72	0.00%	0.39	0.117	(0.001)	17.6	0.123	0.027	323.9%	31,230	3,626	29.1%	NM
▲ Kuwait Remal Real Estate Co.	REMA.KW	NM	0.81	0.00%	0.88	0.021	0.002	6.4	0.028	0.016	4.0%	8,992,504	183,710	104.7%	NM
▲ Mashaer Holding Co.	MASHAER.KW	NM	0.82	0.00%	0.53	0.078	0.000	14.0	0.086	0.056	32.8%	279,256	21,334	49.8%	NM
= Ajwan Gulf Real Estate Co.	AJWN.KW	NM	0.35	0.00%	0.56	0.011	0.000	2.2	0.000	0.000	0.0%	0	0	0.0%	NM
▼ Al Masaken Intl. Real Estate Dev. Co.	MASKN.KW	NM	0.77	0.00%	0.16	0.050	(0.002)	5.0	0.069	0.025	103.2%	1,063,978	53,287	533.0%	NM
▼ Dalqan Real Estate Co.	DALQ.KW	NM	1.83	0.00%	NA	0.248	(0.013)	12.3	0.300	0.198	(9.5%)	48,246	12,070	44.9%	0.6%
= Dar Al Thuraya Real Estate Co.	THURY.KW	31.4	0.95	0.00%	NA	0.104	0.000	15.2	0.128	0.046	64.0%	0	0	4.0%	3.0%
= Osos Holding Group Co.	OSOS.KW	14.5	1.09	5.88%	0.29	0.119	0.000	12.5	0.131	0.083	32.2%	251,808	29,475	66.9%	7.5%
▲ KFH Capital REIT	BAITAKREIT.KW	NA	NA	1.50%	NA	1.230	0.009	29.0	1.311	1.018	20.5%	3,721	4,526	13.1%	NA
▼ Land United Real Estate Co.	LAND.KW	NM	0.86	0.00%	NA	0.102	(0.002)	15.3	0.200	0.095	(20.9%)	333,768	34,359	41.4%	NM
Real Estate		NM	1.13	0.95%				3,043.7			48.2%	100,396,286	12,410,772		NM

Boursa Kuwait Daily Bulletin

Monday, November 15, 2021

Company	Reuters Ticker	Valuation Multiples				Price (KWD)		MKT Cap (KWD Mn.)	52 Weeks High (KWD)	52 Weeks Low (KWD)	YTD-21 Return #	Daily Trading Data		YTD-21 Capital Turnover	ROE
		Trailing P/E (X)	Trailing P/BV (X)	Dividend Yield	Beta	Closing	DTD Change					Volume (Shrs.)	Value (KWD)		
▼ Kuwait Investment Co.	KINV.KW	6.4	1.37	0.00%	0.75	0.297	(0.004)	163.7	0.317	0.119	143.4%	294,382	87,402	66.1%	21.3%
= Commercial Facilities Co.	FACI.KW	5.9	0.75	4.38%	0.53	0.216	0.000	115.9	0.220	0.168	13.7%	230,209	49,515	12.8%	12.6%
▼ Int'l Financial Advisors Co.	IFIN.KW	1.5	1.11	0.00%	1.26	0.116	(0.001)	30.9	0.145	0.059	94.0%	5,569,262	643,865	572.7%	75.6%
= National Investment Co.	NINV.KW	8.7	1.11	4.17%	1.25	0.240	0.000	210.3	0.248	0.128	77.8%	1,233,238	292,226	50.7%	12.8%
= Kuwait Projects Co.(Holding)	KPRO.KW	NM	1.36	3.49%	0.59	0.141	0.000	282.0	0.170	0.140	(11.3%)	2,086,554	292,762	17.8%	0.3%
= Coast Invest. & Development Co.	COAS.KW	NM	1.14	0.00%	1.30	0.117	0.000	54.4	0.127	0.050	141.2%	513,773	59,520	148.8%	NM
= The Securities House Co.	SECH.KW	NM	1.09	0.00%	1.14	0.110	0.000	49.5	0.117	0.052	158.2%	8,900,248	963,893	397.2%	NM
▲ Arzan Financial Group For Fin. & Invest.	ARZA.KW	51.6	1.25	0.00%	1.02	0.168	0.001	134.9	0.183	0.055	201.1%	4,226,357	705,813	313.4%	2.4%
▼ Kuwait Financial Centre	MARKZ.KW	5.1	0.94	0.00%	0.78	0.198	(0.001)	95.2	0.207	0.080	137.4%	2,151,601	419,849	109.2%	18.5%
▼ Kuwait & M.E. Financial Inv. Co.	KMEF.KW	12.1	1.21	0.00%	0.58	0.137	(0.001)	30.1	0.198	0.123	12.3%	39,611	5,245	13.9%	10.0%
▼ First Investment Co.	OLAK.KW	NM	0.79	0.00%	1.05	0.082	(0.001)	36.4	0.095	0.039	90.0%	8,412,778	682,798	725.2%	NM
= Al-Mal Investment Co.	MALK.KW	NM	0.25	0.00%	1.14	0.006	0.000	1.8	0.000	0.000	0.0%	0	0	0.0%	NM
▲ Gulf Investment House	GIHK.KW	26.1	4.66	0.00%	1.00	0.309	0.001	200.5	0.340	0.076	271.4%	114,029	34,549	76.5%	17.9%
▼ A'ayan Leasing & Investment Co.	AAYA.KW	3.9	1.34	0.00%	1.25	0.158	(0.001)	112.8	0.204	0.097	71.9%	4,917,535	775,803	338.4%	34.1%
▼ Bayan Investment Co.	BAYK.KW	NM	0.54	0.00%	0.79	0.056	(0.000)	21.9	0.065	0.032	33.8%	450,466	25,170	176.4%	NM
= Osoul Investment Co.	OSUL.KW	36.5	0.82	0.00%	0.45	0.095	0.000	14.0	0.106	0.061	18.8%	292,019	26,948	36.2%	2.2%
▼ Kuwait Finance & Investment Co.	KFSK.KW	5.5	0.66	0.00%	0.35	0.086	(0.003)	27.7	0.125	0.042	100.0%	649,184	55,765	57.0%	12.0%
▼ Kamco Investment Co.	KAMC.KW	6.5	0.86	0.00%	0.44	0.143	(0.002)	49.0	0.149	0.072	93.5%	1,711,845	242,630	75.5%	13.1%
▼ National International Holding Co.	NIHK.KW	NM	1.01	0.00%	0.67	0.160	(0.004)	36.4	0.179	0.069	93.2%	722,985	116,122	129.0%	NM
▼ UniCap Investment and Finance	UNICAP.KW	7.8	0.99	0.00%	0.69	0.082	(0.003)	19.6	0.097	0.036	94.8%	1,977,257	160,173	112.0%	12.8%
▼ Al Madar Finance & Investment Co.	MADR.KW	NM	1.15	0.00%	0.37	0.116	(0.003)	24.8	0.156	0.086	27.3%	147,721	17,136	99.0%	NM
= Al-Deera Holding	DEER.KW	NM	1.41	0.00%	1.02	0.195	0.000	17.9	0.223	0.018	118.8%	0	0	337.9%	0.1%
▼ Al-Safat Investment Co.	ALSAFAT.KW	3.4	1.46	0.00%	NA	0.133	(0.004)	34.2	0.157	0.120	0.0%	2,926,309	393,994	107.7%	43.3%
▼ Al Salam Group Holding Co.	SAGH.KW	NM	0.32	0.00%	1.30	0.030	(0.001)	8.1	0.037	0.024	19.8%	8,288,877	241,784	325.3%	NM
▼ Ektitab Holding Co.	EKTT.KW	NM	0.49	0.00%	0.97	0.021	(0.000)	6.5	0.024	0.015	35.8%	3,413,650	69,266	202.4%	NM
= Al Madina For Finance & Investment Co.	MADI.KW	1.8	0.43	0.00%	1.18	0.016	0.000	6.6	0.019	0.015	3.2%	0	0	105.7%	23.8%
▼ NOOR Financial Investment Co.	NOOR.KW	9.2	1.86	1.71%	1.21	0.362	(0.001)	144.7	0.399	0.168	112.9%	343,203	124,185	38.4%	20.2%
▲ Tamdeen Investment Co.	TAMI.KW	NM	0.55	0.00%	0.34	0.389	0.007	134.2	0.414	0.200	25.5%	1	0	3.7%	NM
▲ Kuwait Syrian Holding Co.	KSHC.KW	30.9	1.35	0.00%	0.69	0.054	0.006	9.5	0.060	0.025	69.3%	1,962,249	93,292	35.3%	4.3%
▼ Asiya Capital Investment Co.	ASIYA.KW	34.6	0.57	0.00%	0.52	0.051	(0.001)	40.9	0.057	0.034	39.2%	1,228,630	61,909	61.9%	1.6%
▲ Gulf North Africa Holding Co.	GNAH.KW	70.9	1.14	0.00%	1.03	0.084	0.002	12.5	0.085	0.057	28.1%	302,000	24,895	21.6%	1.6%
▼ Alimtiyaz Investment Group	ALIMK.KW	NM	0.76	0.00%	0.98	0.125	(0.002)	141.7	0.142	0.106	11.6%	3,877,225	484,652	105.6%	NM
▼ Manazel Holding Co.	MANK.KW	28.4	1.08	0.00%	1.36	0.052	(0.001)	22.6	0.060	0.031	65.3%	10,953,357	564,198	261.6%	3.8%
▲ National Industries Group	NIND.KW	7.4	1.08	0.00%	1.44	0.289	0.001	412.6	0.296	0.165	64.2%	5,113,362	1,471,182	106.3%	14.5%
▼ Warba Capital Holding Co.	WARBACAP.KW	NM	0.70	0.00%	0.68	0.111	(0.001)	5.6	0.145	0.045	128.4%	240,630	26,122	128.0%	NM
▼ Arabi Holding Group Co.	AGHC.KW	47.4	1.09	0.00%	0.15	0.190	(0.009)	32.9	0.228	0.102	(4.0%)	1,965,861	365,756	86.4%	2.3%
▼ Privatization Holding Co.	KPPC.KW	21.2	0.47	0.00%	0.79	0.061	(0.005)	37.2	0.070	0.039	52.1%	9,746,731	578,828	226.8%	2.2%
▼ Credit Rating & Collection Co.	TAHS.KW	NM	1.45	0.00%	NA	0.042	(0.001)	7.0	0.056	0.020	91.8%	1,585,654	71,450	17.0%	NM
▲ Egypt Kuwait Holding Co.	EKKH.KW	14.0	2.89	0.00%	0.18	0.459	0.013	517.2	0.460	0.293	42.2%	1,357,461	613,683	5.3%	20.7%
▲ GFH Financial Group	GFH.KW	17.1	1.23	1.98%	0.86	0.092	0.000	346.6	0.104	0.047	95.7%	73,342,697	6,743,371	87.7%	7.2%
▲ Inovent	INOV.KW	NM	0.79	0.00%	0.74	0.111	0.004	33.4	0.134	0.063	69.2%	522,033	56,389	292.2%	NM
▼ Al Bareeq Holding	BAREEQ.KW	NM	0.67	0.00%	NA	0.040	(0.000)	30.5	0.102	0.034	(38.3%)	13,166,586	519,835	159.8%	NM
▲ Amar For Finance and Leasing Co.	AMARF.KW	15.7	0.89	0.00%	0.08	0.079	0.002	15.9	0.097	0.039	63.0%	8,214,075	650,400	24.9%	5.6%
▼ Al-Manar Financing & Leasing Co.	ALMANAR.KW	NM	0.72	0.00%	0.53	0.072	(0.002)	22.1	0.085	0.048	44.2%	400,223	27,729	33.4%	NM
▼ Boursa Kuwait Securities Co	BOURSA.KW	14.0	7.44	2.05%	0.74	1.950	(0.030)	391.5	2.432	1.091	77.3%	388,017	755,973	44.4%	53.2%
Financial Services		13.5	1.26	0.99%				4,144.0			53.4%	193,979,885	19,596,077		9.3%

Boursa Kuwait Daily Bulletin

Monday, November 15, 2021

Company	Reuters Ticker	Valuation Multiples				Price (KWD)		MKT Cap (KWD Mn.)	52 Weeks High (KWD)	52 Weeks Low (KWD)	YTD-21 Return #	Daily Trading Data		YTD-21 Capital Turnover	ROE
		Trailing P/E (X)	Trailing P/BV (X)	Dividend Yield	Beta	Closing	DTD Change					Volume (Shrs.)	Value (KWD)		
▼ Automated Systems Co.	ASCK.KW	NM	0.88	0.00%	0.17	0.103	(0.005)	10.3	0.122	0.068	49.1%	13,210	1,332	38.3%	NM
Technology		NM	0.88	0.00%				10.3			49.1%	13,210	1,332		NM
▼ Shamal Az-Zour Al-Oula Power and Water Co.	AZNOULA.KW	20.8	5.02	5.00%	0.68	0.240	(0.002)	264.0	0.276	0.220	(13.4%)	2,177,960	524,988	37.8%	24.2%
Utilities		20.8	5.02	5.00%				264.0			(13.4%)	2,177,960	524,988		24.2%
Boursa Kuwait		28.8	1.82	1.57%				42,878.7			29.94%	451,724,516	80,128,977		6.3%

Year-to-Date 2021 Top Movers & Most Active Stocks

YTD Top % Gainers	Close (KWD)	Percent Change	YTD Top % Losers	Close (KWD)	Percent Change
Real Estate Trade Centers Co.	0.117	323.9%	Yiaco Medical Co.	0.448	(46.7%)
Al Eid Food Co.	0.275	297.6%	Al Bareeq Holding	0.040	(38.3%)
Gulf Investment House	0.309	271.4%	Al Kout for Industrial Projects Co.	0.449	(33.5%)
National Real Estate Co.	0.224	243.1%	Land United Real Estate Co.	0.102	(20.9%)
IFA Hotels & Resorts Co.	0.064	230.3%	National Petroleum Services Co.	0.844	(19.5%)
YTD Most Active by Volume	Close (KWD)	Volume (Shrs.)	YTD Most Active by Value	Close (KWD)	Value (KWD)
Ahli United Bank - Bahrain	0.286	3,365,896,960	Kuwait Finance House	0.839	1,026,243,662
GFH Financial Group	0.092	3,313,201,631	National Bank of Kuwait	1.030	935,560,587
First Investment Co.	0.082	3,234,267,181	Ahli United Bank - Bahrain	0.286	797,153,703
AAN Digital Services Co.	0.019	2,816,675,252	Agility (PWC Logistics)	1.035	608,973,499
MAZAYA Holding Co.	0.080	2,735,657,458	Gulf Bank	0.258	526,746,569

* Different Fiscal Year Company

Disclaimer & Important Disclosures

Kamco Invest is authorized and fully regulated by the Capital Markets Authority ("CMA, Kuwait") and partially regulated by the Central Bank of Kuwait ("CBK").

This document is provided for informational purposes only. Nothing contained in this document constitutes investment, an offer to invest, legal, tax or other advice or guidance and should be disregarded when considering or making investment decisions. In preparing this document, Kamco Invest did not take into account the investment objectives, financial situation and particular needs of any particular person. Accordingly, before acting on this document, investors should independently evaluate the investments and strategies referred to herein and make their own determination of whether it is appropriate in light of their own financial circumstances and objectives. The entire content of this document is subject to copyright with all rights reserved. This research and the information contained herein may not be reproduced, distributed or transmitted in Kuwait or in any other jurisdiction to any other person or incorporated in any way into another document or other material without our prior written consent.

Analyst Certification

Each of the analysts identified in this report, if any and where applicable, certifies, with respect to the sector, companies or securities that the individual analyses, that (1) the views expressed in this report reflect his or her personal views about all of the subject companies and securities and (2) no part of his or her compensation was, is or will be directly or indirectly dependent on the specific recommendations or views expressed in this report.

Kamco Invest Ratings

Kamco Invest research is based on the analysis of regional and country economics, industries and company fundamentals. Kamco Invest company research reflects a long-term (12-month) target price for a company or stock. The ratings bands are:

* **Outperform:** Target Price represents expected returns >= 10% in the next 12 months

* **Neutral:** Target Price represents expected returns between -10% and +10% in the next 12 months

* **Underperform:** Target Price represents an expected return of <-10% in the next 12 months

In certain circumstances, ratings may differ from those implied by a fair value target using the criteria above. Kamco Invest policy is to maintain up-to-date fair value targets on the companies under its coverage, reflecting any material changes to the analyst's outlook on a company. Share price volatility may cause a stock to move outside the rating range implied by Kamco Invest's fair value target. Analysts may not necessarily change their ratings if this happens, but are expected to disclose the rationale behind their view to Kamco Invest clients.

Any terms and conditions proposed by you which are in addition to or which conflict with this Disclaimer are expressly rejected by Kamco Invest and shall be of no force or effect. The information contained in this document is based on current trade, statistical and other public information we consider reliable. We do not represent or warrant that such information is fair, accurate or complete and it should not be relied upon as such. Kamco Invest has no obligation to update, modify or amend this document or to otherwise notify a recipient thereof in the event that any opinion, forecast or estimate set forth herein, changes or subsequently becomes inaccurate. The publication is provided for informational uses only and is not intended for trading purposes. The information on publications does not give rise to any legally binding obligation and/or agreement, including without limitation any obligation to update such information. You shall be responsible for conducting your own investigation and analysis of the information contained or referred to in this document and of evaluating the merits and risks involved in the securities forming the subject matter of this or other such document. Moreover, the provision of certain data/information in the publication may be subject to the terms and conditions of other agreements to which Kamco Invest is a party.

Nothing in this document should be construed as a solicitation or offer, or recommendation, to acquire or dispose of any investment or to engage in any other transaction, or to provide any investment advice or service. This document is directed at Professional Clients and not Retail Clients within the meaning of CMA rules. Any other persons in receipt of this document must not rely upon or otherwise act upon it. Entities and individuals

*Kamco Investment Company (DIFC) Limited ("Kamco Invest DIFC"), Office 205, Level 2, Gate Village 1, Dubai International Financial Centre, a wholly owned subsidiary of Kamco Investment Company KSC (Public), is regulated by the Dubai Financial Services Authority (DFSA). Kamco Invest DIFC may only undertake the financial services activities that fall within the scope of its existing DFSA licence. The information in this document may be distributed by Kamco Invest DIFC on behalf of Kamco Investment Company KSC (Public). This document is intended for Professional Clients or Market Counterparties only as defined by the DFSA, and no other person should act upon it.

This document may not be distributed in Saudi Arabia except to such persons as are permitted under the Offers of Securities Regulations issued by the Capital Market Authority. The Capital Market Authority does not make any representation as to the accuracy or completeness of this document, and expressly disclaims any liability whatsoever for any loss arising from, or incurred in reliance upon, any part of this document. The recipients of this document hereby should conduct their own due diligence on the accuracy of the information relating to the contents of this document. If you do not understand the contents of this document you should consult an authorized financial advisor.

Risk Warnings

Any prices, valuations or forecasts are indicative and are not intended to predict actual results, which may differ substantially from those reflected. The value of an investment may go up as well as down. The value of and income from any investment may fluctuate from day to day as a result of changes in relevant economic markets (including, without limitation, foreseeable or unforeseeable changes in interest rates, foreign exchange rates, default rates, prepayment rates, political or financial conditions, etc.).

Past performance is not indicative of future results. Any opinions, estimates, valuations or projections (target prices and ratings in particular) are inherently imprecise and a matter of judgment. They are statements of opinion and not of facts based on current expectations, estimates and projections, and rely on beliefs and assumptions. Actual outcomes and returns may differ materially from what is expressed or forecasted. There are no guarantees of future performance. Certain transactions, including those involving futures, options, and other derivatives, give rise to substantial risk and are not suitable for all investors. This document does not propose to identify or to suggest all of the risks (direct or indirect) which may be associated with the investments and strategies referred to herein.

Conflict of Interest

Kamco Invest and its affiliates provide full investment banking services, and they and their directors, officers and employees, may take positions which conflict with the views expressed in this document. Salespeople, traders, and other professionals of Kamco Invest may provide oral or written market commentary or trading strategies to our clients and our proprietary trading desks that reflect opinions that are contrary to the opinions expressed in this document. Our asset management area, our proprietary trading desks and investing businesses may make investment decisions that are inconsistent with the recommendations or views expressed in this document. Kamco Invest may have or seek investment relationships for which it will receive compensation from the companies that are the subject of this document. Facts and views presented in this document have not been reviewed by, and may not reflect information known to, professionals in other Kamco Invest business areas, including investment banking personnel. United Gulf Bank, Bahrain owns majority of Kamco Invest's shareholding and this ownership may create, or may create the appearance of, conflicts of interest.

No Liability & Warranty

Kamco Invest makes neither implied nor expressed representations or warranties and, to the fullest extent permitted by applicable law, we hereby expressly disclaim any and all express, implied and statutory representations and warranties of any kind, including, without limitation, any warranty as to accuracy, timeliness, completeness, and fitness for a particular purpose and/or non-infringement. Kamco Invest will accept no liability in any event including (without limitation) your reliance on the information contained in this document, any negligence for any damages or loss of any kind, including (without limitation) direct, indirect, incidental, special or consequential damages, expenses or losses arising out of, or in connection with your use or inability to use this document, or in connection with any error, omission, defect, computer virus or system failure, or loss of any profit, goodwill or