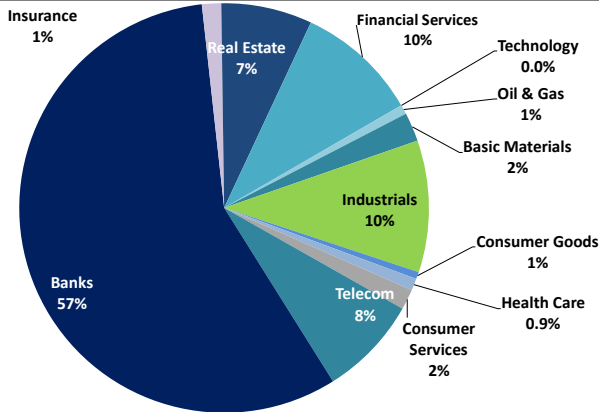


Boursa Kuwait Daily Report

November 14, 2021

Sector Weight by Market Cap



Top 10 Companies by Market Capitalization

Company Name	Market Cap. (Mn KWD)	P/E (X)	ROE* (%)
1- National Bank of Kuwait	7,415.7	25.1	8.9%
2- Kuwait Finance House	7,099.3	36.7	10.3%
3- Ahli United Bank - Bahrain	2,939.0	21.5	10.8%
4- Boubyan Bank	2,594.6	67.0	7.1%
5- Zain	2,587.6	13.8	16.2%
6- Agility (PWC Logistics)	2,359.5	30.8	6.5%
7- Commercial Bank of Kuwait	996.0	55.6	2.3%
8- Mabanee Co.	995.7	21.4	9.3%
9- Gulf Bank	789.5	23.5	5.2%
10- Ahli United Bank - Kuwait	771.9	25.7	6.6%
Total	28,549	27.01	9.0%

*: ROE is calculated based on TTM 1H-2021 net profit & shareholders' equity as of 30-June-21

Top Movers and Most Active Stocks

Today's Top % Gainers	Close (KWD)	Change (KWD)	Percent Change
Equipment Holding Co.	0.073	0.006	8.4%
Advanced Technology Co.	0.539	0.029	5.7%
Gulf Insurance Group	1.104	0.039	3.7%
Agility (PWC Logistics)	1.058	0.037	3.6%
Kuwait & M.E. Financial Inv. Co.	0.138	0.004	3.0%

Today's Top % Losers	Close (KWD)	Change (KWD)	Percent Change
The Energy House Co.	0.063	(0.012)	(15.6%)
Wethaq Takaful Insurance Co.	0.063	(0.008)	(11.9%)
Kuwait Syrian Holding Co.	0.048	(0.006)	(11.3%)
Kuwait Remal Real Estate Co.	0.020	(0.002)	(10.6%)
Senergy Holding Co.	0.053	(0.005)	(8.3%)

Today's Most Active by Volume	Close (KWD)	Percent Change	Volume (Shares)
National Real Estate Co.	0.228	1.8%	54,583,535
GFH Financial Group	0.092	(1.3%)	44,381,361
AAN Digital Services Co.	0.019	0.0%	31,394,113
Gulf Bank	0.259	(0.4%)	16,123,222
Al Bareeq Holding	0.041	(3.8%)	14,896,201

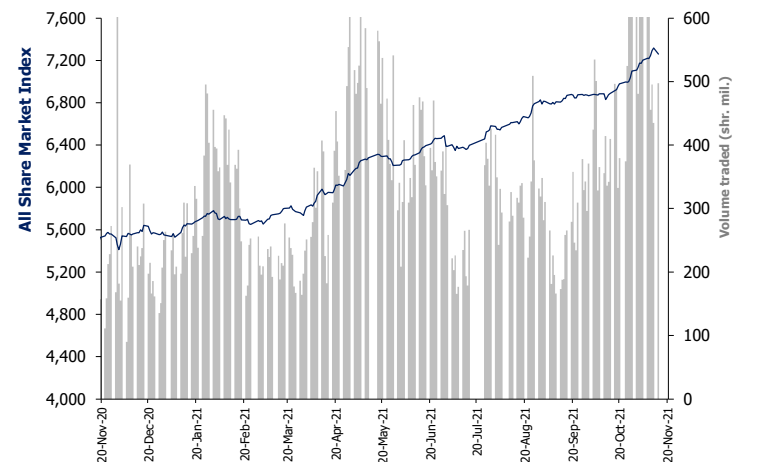
Source: Boursa Kuwait, Kamco Invest Research

Market Capitalization - Sector Returns

	Market Cap. (KWD Mn)	DTD	DTD % Chg	MTD % Chg	YTD % Chg
Boursa Kuwait	43,098.0	▼	(0.8%)	2.4%	30.6%
Oil & Gas	308.2	▼	(4.9%)	1.5%	9.9%
Basic Materials	978.8	▼	(0.4%)	(0.2%)	22.1%
Industrials	4,454.5	▲	1.4%	3.8%	40.3%
Consumer Goods	241.3	▼	(0.2%)	(1.3%)	4.0%
Health Care	398.5	▲	1.1%	1.1%	(2.8%)
Consumer Services	690.7	▼	(0.8%)	9.0%	64.7%
Telecommunications	3,379.7	▼	(0.7%)	(0.1%)	0.0%
Banks	24,495.5	▼	(1.1%)	2.4%	30.3%
Insurance	648.5	▲	1.3%	8.6%	51.5%
Real Estate	3,080.6	▼	(1.0%)	3.0%	50.0%
Financial Services	4,144.8	▼	(1.0%)	1.4%	53.4%
Technology	10.8	=	0.0%	1.9%	56.3%
Utilities	266.2	▼	-0.8%	2.5%	-12.6%

Market Breadth	▲ 28	▼ 107	■ 32		
Benchmark Return	Closing	DTD	DTD	MTD	YTD
	Value	Chg	% Chg	% Chg	% Chg
Premier Market Index	7,864.41	(62.0)	(0.8%)	2.2%	30.0%
Main 50 Index	6,272.73	(49.5)	(0.8%)	1.7%	35.3%
Main Market Index	6,093.22	(47.8)	(0.8%)	1.9%	33.8%
All Share Market Index	7,260.82	(57.2)	(0.8%)	2.2%	30.9%
Market Cap (KWD Mn)	43,098.05	(335.3)	(0.8%)	2.4%	30.6%

Index Performance relative to Volume



Market Trading Data and Volatility

Trading Indicators	Today's Value	DTD Chg	DTD % Chg	Average Daily YTD 2021	YTD 2020
Volume (Shrs Mn)	497.2	62.1	14.3%	351.9	209.8
Value Traded (KWD Mn)	99.5	21.63	27.8%	55.1	39.4
No. of Trades	19,049	2,490	15.0%	12,597	9,318

Today's Most Active by Value	Close (KWD)	Percent Change	Value (KWD)
Agility (PWC Logistics)	1.058	3.6%	14,893,896
National Real Estate Co.	0.228	1.8%	12,554,504
Kuwait Finance House	0.841	(0.7%)	7,346,368
Gulf Bank	0.259	(0.4%)	4,209,413
National Bank of Kuwait	1.031	(1.8%)	4,192,008

Boursa Kuwait - Premier Market

Sunday, November 14, 2021

	Premier Market Stocks	Closing Price			Market Capitalization			Valuation Multiples				ROE	YTD-21 Price Return	YTD-21 Trading Indicators	
		KWD	DTD Chg. (KWD)	D-T-D Return	KWD Mn	Weight in Premier Index	Weight in Boursa Kuwait	P/E (X)	P/BV (X)	Yield	Beta			Volume (Mn Shrs)	Value (KWD Mn)
▼	National Bank of Kuwait	1.031	(0.019)	(1.8%)	7,416	23.1%	17.2%	25.1	2.22	1.8%	1.27	8.9%	28.9%	1,060.10	925.49
▼	Gulf Bank	0.259	(0.001)	(0.4%)	789	2.5%	1.8%	23.5	1.23	1.8%	1.13	5.2%	18.3%	2,275.74	525.69
▼	Kuwait International Bank	0.224	(0.002)	(0.9%)	254	0.8%	0.6%	NM	0.98	0.0%	1.01	0.8%	7.7%	1,074.30	235.03
▼	Burgan Bank	0.234	(0.002)	(0.8%)	733	2.3%	1.7%	21.0	1.08	1.8%	1.05	5.1%	31.0%	536.18	121.07
▼	Kuwait Finance House	0.841	(0.006)	(0.7%)	7,099	22.1%	16.5%	36.7	3.79	1.1%	1.40	10.3%	36.6%	1,335.41	1,016.34
▼	Boubyan Bank	0.816	(0.007)	(0.9%)	2,595	8.1%	6.0%	67.0	4.79	0.0%	1.05	7.1%	50.8%	257.14	171.72
▼	National Investments Co	0.240	(0.002)	(0.8%)	210	0.7%	0.5%	8.7	1.11	4.2%	1.25	12.8%	77.8%	442.80	80.73
=	Kuwait Projects Co. (Holding)	0.141	0.000	0.0%	282	0.9%	0.7%	NM	1.36	3.5%	0.59	0.3%	(11.3%)	353.63	53.63
▼	Al Imtiaz Investment Group	0.127	(0.001)	(0.8%)	144	0.4%	0.3%	NM	0.78	0.0%	0.98	NM	13.4%	1,193.68	148.16
▼	Kuwait Real Estate Co.	0.181	(0.002)	(1.1%)	171	0.5%	0.4%	35.1	1.33	0.0%	0.97	3.8%	74.4%	2,133.02	296.80
▼	Mabane Co.	0.850	(0.007)	(0.8%)	996	3.1%	2.3%	21.4	1.99	0.7%	1.11	9.3%	37.1%	141.09	102.51
▼	National Industries Group (Holding)	0.288	(0.006)	(2.0%)	411	1.3%	1.0%	7.4	1.07	0.0%	1.44	14.5%	63.6%	1,512.85	343.06
▼	Gulf Cable and Electrical Industries	0.989	(0.006)	(0.6%)	208	0.6%	0.5%	37.1	1.11	5.1%	0.94	3.0%	31.0%	61.28	50.16
▼	Boubyan Petrochemical Co.	0.922	(0.005)	(0.5%)	493	1.5%	1.1%	26.2	2.17	5.8%	0.72	8.3%	44.1%	102.10	87.78
▼	Qurain Petrochemicals Industries Co.	0.376	(0.002)	(0.5%)	413	1.3%	1.0%	30.2	0.99	4.0%	0.75	3.3%	11.2%	137.27	52.63
▲	Agility Public Warehousing Co.	1.058	0.037	3.6%	2,359	7.3%	5.5%	30.8	2.02	0.8%	1.48	6.5%	72.2%	674.85	604.18
▼	Mobile Telecommunications Co.	0.598	(0.005)	(0.8%)	2,588	8.0%	6.0%	13.8	2.24	3.3%	1.35	16.2%	(1.3%)	668.39	405.78
▼	Human Soft Holding Co.	3.260	(0.030)	(0.9%)	398	1.2%	0.9%	6.0	3.75	12.2%	0.49	63.0%	(14.2%)	50.77	182.55
▼	ALAFCO Aviation Lease and Finance Co.	0.252	(0.002)	(0.8%)	240	0.7%	0.6%	NM	0.81	0.0%	0.87	NM	16.7%	474.07	107.08
▼	Ahli United Bank (B.S.C)	0.290	(0.004)	(1.4%)	2,939	9.1%	6.8%	21.5	2.33	1.3%	1.13	10.8%	33.0%	3,352.58	793.32
▼	Warba Bank	0.297	(0.003)	(1.0%)	468	1.5%	1.1%	17.6	2.36	0.0%	0.99	13.4%	25.8%	617.54	158.90
▼	Mezzan Holding Co.	0.615	(0.003)	(0.5%)	195	0.6%	0.5%	19.4	1.76	2.8%	0.44	9.1%	3.2%	98.79	60.78
▲	Integrated holding Co.	0.386	0.011	2.9%	98	0.3%	0.2%	NM	1.61	0.0%	0.47	NM	5.5%	270.10	105.79
▼	Shamal Az-Zour Al-Oula Power and Water	0.242	(0.002)	(0.8%)	266	0.8%	0.6%	20.9	5.07	5.0%	0.68	24.2%	(12.6%)	413.32	103.16
▼	Boursa Kuwait Securities Co.	1.980	(0.045)	(2.2%)	398	1.2%	0.9%	14.2	7.56	2.0%	0.73	53.2%	80.0%	88.78	121.02
Subtotal- Premier Market Stocks		7,864.41	(62.02)	-0.8%	32,163	100%	75%	24.8	2.26	1.67%		9.1%	30.0%	19,325.84	6,853.37
Remaining of the Market					10,935		25%	55.9	1.16	1.24%		2.1%		54,926.11	4,768.12

Source: Kamco Invest Research

Boursa Kuwait Daily Bulletin

Sunday, November 14, 2021

Company	Reuters Ticker	Valuation Multiples				Price (KWD)		MKT Cap (KWD Mn.)	52 Weeks High (KWD)	52 Weeks Low (KWD)	YTD-21 Return #	Daily Trading Data		YTD-21 Capital Turnover	ROE
		Trailing P/E (X)	Trailing P/BV (X)	Dividend Yield	Beta	Closing	DTD Change					Volume (Shrs.)	Value (KWD)		
▼ Senergy Holding Co.	SENE.KW	NM	1.08	0.00%	1.12	0.053	(0.005)	10.6	0.063	0.021	150.0%	1,837,920	99,620	174.3%	NM
= Independent Petroleum Group	IPGK.KW	16.0	1.14	4.76%	0.26	0.605	0.000	114.0	0.669	0.447	27.4%	0	0	1.8%	7.2%
▼ National Petroleum Services Co.	NAPS.KW	14.6	2.25	7.56%	0.20	0.821	(0.047)	82.1	1.150	0.709	(21.7%)	29,600	24,252	1.4%	15.4%
▼ The Energy House Co.	ENER.KW	27.2	2.33	0.00%	0.97	0.063	(0.012)	47.5	0.086	0.025	122.9%	1,073,851	72,801	8.9%	8.6%
▼ Gulf Petroleum Investment	GPIK.KW	NM	0.38	0.00%	1.08	0.028	(0.001)	12.5	0.031	0.018	42.5%	7,107,050	196,686	380.8%	NM
▼ Burgan Co. for Drilling, Tdg. & Maint. *	ABAR.KW	16.4	0.62	1.69%	NA	0.171	(0.003)	41.5	0.207	0.127	10.3%	366,240	62,860	149.3%	3.8%
Oil & Gas		31.2	1.16	4.00%				308.2			9.9%	10,414,661	456,219		3.7%
▲ Kuwait Foundry Co.	KFDC.KW	NM	1.90	1.87%	0.63	0.374	0.010	27.0	0.430	0.258	39.6%	4,100	1,500	13.7%	NM
▼ Boubyan Petrochemicals Co.*	BPCCKW	26.2	2.17	5.80%	0.72	0.922	(0.005)	493.1	0.987	0.625	44.1%	348,111	319,627	19.1%	8.3%
= Al Kout for Industrial Projects Co.	ALKK.KW	NM	1.87	4.45%	0.03	0.449	0.000	45.3	0.675	0.449	(33.5%)	0	0	0.0%	NM
▼ Qurain Petrochemical Industries Co. *	ALQK.KW	30.2	0.99	4.03%	0.75	0.376	(0.002)	413.3	0.447	0.334	11.2%	484,458	181,870	12.5%	3.3%
Basic Materials		31.9	1.43	4.88%				978.8			22.1%	836,669	502,997		4.5%
▼ Specialities Group Holding Co.	SPEC.KW	55.7	0.78	0.00%	0.43	0.141	(0.007)	23.3	0.169	0.073	80.1%	983,045	141,288	287.9%	1.4%
▼ Kuwait Cement Co.	KCEM.KW	NM	0.93	0.00%	0.52	0.244	(0.004)	178.9	0.266	0.215	5.6%	410,894	99,442	9.2%	NM
▼ Gulf Cable & Electrical Ind. Co.	CABL.KW	37.1	1.11	5.06%	0.94	0.989	(0.006)	207.6	1.011	0.728	31.0%	477,937	469,093	29.2%	3.0%
▼ Heavy Eng'g Ind. & Shipbuilding Co.	SHIP.KW	12.1	1.30	4.26%	0.59	0.470	(0.005)	84.7	0.524	0.392	18.4%	544,620	256,370	78.9%	10.7%
▼ Kuwait Portland Cement Co.	PCEM.KW	13.3	1.43	4.04%	0.46	0.990	(0.024)	99.2	1.050	0.766	26.1%	176,800	175,519	15.0%	10.7%
= Shuaiba Industrial Co.	PAPE.KW	16.5	1.20	4.58%	0.13	0.215	0.000	21.6	0.223	0.145	38.7%	0	0	4.9%	7.3%
▼ Metal & Recycling Co.	MRCK.KW	NM	1.57	0.00%	0.19	0.105	(0.004)	12.3	0.196	0.051	97.7%	41,982	4,472	14.5%	NM
▼ ACICO Industries Co.	ACIC.KW	NM	0.53	0.00%	0.38	0.132	(0.006)	39.8	0.143	0.082	46.8%	2,331,172	310,346	66.2%	NM
= Hilal Cement Co.	HCCCKW	NM	0.74	0.00%	0.10	0.140	0.000	7.0	0.180	0.069	53.8%	0	0	2.3%	NM
▼ National Industries Co.	NIBM.KW	23.1	0.83	0.00%	0.17	0.200	(0.005)	74.5	0.218	0.150	28.2%	184,043	36,934	4.3%	3.6%
▲ Equipment Holding Co.	EQUI.KW	NM	1.07	0.00%	1.01	0.073	0.006	5.8	0.079	0.027	144.9%	4,829,794	343,574	221.6%	NM
▼ National Co. for Consumer Industries	NCCI.KW	NM	1.85	0.00%	NA	0.147	(0.007)	13.2	0.198	0.038	200.6%	1,506,262	220,559	677.2%	NM
▼ Salbookh Trading Co.	SALB.KW	NM	1.06	0.00%	0.59	0.056	(0.002)	5.9	0.072	0.035	49.3%	534,212	29,947	231.4%	NM
▲ Agility (PWC Logistics)	AGLT.KW	30.8	2.02	0.82%	1.48	1.058	0.037	2,359.5	1.077	0.592	72.2%	13,910,402	14,893,896	30.3%	6.5%
▼ Educational Holding Group*	EDUK.KW	9.0	1.75	0.00%	0.46	0.694	(0.006)	66.1	0.900	0.433	111.6%	15,149	10,409	19.2%	19.5%
▼ National Cleaning Co.	CLEA.KW	NM	0.47	0.00%	0.80	0.064	(0.005)	15.9	0.080	0.045	18.9%	1,247,904	81,809	113.5%	NM
▼ Kuwait & Gulf Link Transport Co.	KGLK.KW	NM	0.55	0.00%	0.78	0.078	(0.004)	22.8	0.106	0.044	48.5%	2,226,719	174,938	66.6%	NM
▲ Kuwait Co. For Process Plant Const. & Cont.	KCPC.KW	8.5	2.07	7.68%	0.48	0.541	0.012	62.7	0.629	0.367	41.0%	18,226	9,481	25.3%	24.3%
▼ Humansoft Holding Co.	HUMN.KW	6.0	3.75	12.21%	0.49	3.260	(0.030)	398.5	4.030	3.200	(14.2%)	354,740	1,162,107	41.5%	63.0%
= Gulf Franchising Co.	GFCI.KW	6.8	1.67	0.00%	NA	0.090	0.000	3.6	0.115	0.032	50.0%	0	0	4.1%	24.6%
= National Shooting Co.	SHOOTING.KW	NM	0.71	0.00%	1.21	0.039	0.000	10.9	0.043	0.019	108.6%	0	0	98.6%	NM
▼ Combined Group Contracting Co.	CGCK.KW	NM	1.59	1.67%	0.65	0.359	(0.013)	61.6	0.399	0.196	78.6%	1,432,366	521,093	91.3%	NM
▼ United Projects Group	UPAC.KW	NM	1.12	0.00%	0.05	0.297	(0.003)	113.6	0.365	0.186	2.4%	297,765	89,970	8.7%	0.9%
▼ ALAFCO Aviation Lease & Finance Co.*	ALAF.KW	NM	0.81	0.00%	0.87	0.252	(0.002)	239.9	0.255	0.198	16.7%	3,427,116	860,671	49.8%	NM
▼ Mubarrad Holding Co.	MBRD.KW	30.0	0.94	0.00%	0.95	0.118	(0.004)	19.3	0.130	0.063	65.0%	654,907	77,910	248.7%	3.1%
= KGL Logistics Co.	LOGK.KW	NM	0.25	0.00%	0.77	0.032	0.000	23.4	0.034	0.027	12.8%	0	0	21.7%	NM
▲ Integrated holding Co.	INTEGRATED.KW	NM	1.61	0.00%	0.47	0.386	0.011	97.7	0.399	0.310	5.5%	9,760,682	3,732,454	106.8%	NM
= Umm Al-Qaiwain General Investments Co.	QIC.KW	9.9	0.67	5.05%	0.18	0.099	0.000	35.9	0.099	0.063	32.0%	0	0	1.2%	6.8%
▼ Fujairah Cement Industries Co.	FCM.KW	NM	0.29	0.00%	0.46	0.058	(0.003)	20.8	0.069	0.028	70.8%	234,870	13,796	19.9%	NM
= Ras-Al-Khaimah for White Cement Co.	RKWC.KW	29.3	1.07	3.73%	0.14	0.134	0.000	67.0	0.175	0.061	106.2%	0	0	4.8%	3.7%
▲ Jassim Transport & Stevedoring Co.	JTC.KW	26.7	1.47	4.89%	NA	0.409	0.004	61.4	0.450	0.395	0.0%	770,308	313,066	24.7%	5.5%
Industrials		34.3	1.46	2.25%				4,454.5			40.3%	46,371,915.0	24,029,144		4.3%

Boursa Kuwait Daily Bulletin

Sunday, November 14, 2021

Company	Reuters Ticker	Valuation Multiples				Price (KWD)		MKT Cap (KWD Mn.)	52 Weeks High (KWD)	52 Weeks Low (KWD)	YTD-21 Return #	Daily Trading Data		YTD-21	ROE
		Trailing P/E (X)	Trailing P/BV (X)	Dividend Yield	Beta	Closing	DTD Change					Volume (Shrs.)	Value (KWD)	Capital Turnover	
▼ Palms Agro Production Co.	PAPK.KW	NM	0.63	0.00%	0.26	0.071	(0.004)	3.7	0.090	0.050	10.5%	500	36	2.0%	NM
▲ Livestock Transport & Trading Co.	CATT.KW	NM	1.08	0.00%	0.26	0.195	0.003	42.2	0.210	0.177	10.8%	48,900	9,435	11.0%	NM
▼ Mezzan Holding Co.	MEZZ.KW	19.4	1.76	2.82%	0.44	0.615	(0.003)	195.3	0.679	0.554	3.2%	278,417	171,700	31.1%	9.1%
Consumer Goods		35.5	1.55	2.28%				241.3			4.0%	327,817	181,171		4.4%
▲ Advanced Technology Co.	ATCK.KW	14.0	1.29	2.78%	0.01	0.539	0.029	80.9	0.600	0.401	(5.4%)	17,950	9,357	1.0%	9.2%
▲ Yiac Medical Co.	YIAC.KW	NM	4.58	0.00%	NA	0.448	0.004	7.7	0.825	0.403	(46.7%)	36,780	16,390	1.4%	NM
= Al-Maidan Clinic For Oral Health Services Co.	MIDAN.KW	31.6	19.05	0.81%	NA	1.240	0.000	310.0	1.240	1.200	0.0%	0	0	0.1%	60.3%
Health Care		25.8	4.94	1.19%				398.5			(2.8%)	54,730	25,748		19.1%
▲ Kuwait National Cinema Co.	KCIN.KW	NM	1.35	0.00%	0.30	0.902	0.002	91.2	0.990	0.700	20.3%	54,699	49,328	1.3%	NM
= Kuwait Hotels Co.	KHOT.KW	10.5	1.24	0.00%	NA	0.093	0.000	5.3	0.113	0.050	55.5%	0	0	20.0%	11.8%
▲ Sultan Center Food Products Co.	SCFK.KW	54.3	1.60	0.00%	0.43	0.258	0.002	74.7	0.269	0.097	158.0%	6,071,283	1,577,682	63.4%	3.0%
▼ IFA Hotels & Resorts Co.*	IFAH.KW	NM	9.23	0.00%	0.29	0.066	(0.002)	42.1	0.071	0.019	240.0%	1,517,074	100,310	135.4%	NM
▼ Oula Fuel Marketing Co.	OULA.KW	13.9	0.95	3.02%	0.47	0.163	(0.006)	65.9	0.178	0.114	32.5%	1,089,693	179,683	23.4%	6.9%
▼ Kuwait Resorts Co.	MUNK.KW	30.4	0.74	1.94%	0.71	0.103	(0.004)	21.7	0.112	0.060	63.0%	2,548,380	264,027	196.2%	2.4%
= Jazeera Airways Co.	JAZK.KW	NM	186.15	0.00%	0.72	1.220	0.000	244.0	1.345	0.588	67.1%	608,421	741,746	49.4%	NM
▼ Soor Fuel Marketing Co.	SOOR.KW	18.5	1.02	3.06%	0.47	0.162	(0.004)	65.6	0.175	0.116	32.8%	221,091	35,973	11.4%	5.5%
▼ Future Kid Entertainment and R.E Co.	KIDK.KW	NM	0.86	0.00%	0.03	0.085	(0.000)	9.8	0.122	0.064	(0.6%)	366,270	30,579	179.3%	NM
= Jiyad Holding Co	JIYAD.KW	NM	0.83	0.00%	0.65	0.087	0.000	30.5	0.099	0.036	96.4%	319,468	27,499	40.3%	NM
▼ Al Eid Food Co.	ALEID.KW	21.5	2.01	1.51%	NA	0.276	(0.004)	39.9	0.310	0.069	299.0%	257,201	71,631	119.6%	9.4%
Consumer Services		NM	1.95	0.73%				690.7			64.7%	13,053,580	3,078,459		NM
▼ Zain	ZAIN.KW	13.8	2.24	3.34%	1.35	0.598	(0.005)	2,587.6	0.641	0.581	(1.3%)	2,096,815	1,259,085	15.4%	16.2%
▼ National Mobile Telecom Co.	OORE.KW	38.4	0.62	2.25%	0.47	0.663	(0.002)	334.2	0.711	0.620	5.7%	95,492	63,553	1.8%	1.6%
= AAN digital services Co.	AAN.KW	NM	0.71	0.00%	1.32	0.019	0.000	16.5	0.020	0.011	52.4%	31,394,113	586,661	318.8%	NM
= Kuwait Telecommunication Co.	STC.KW	13.2	2.06	6.96%	0.55	0.862	0.000	430.5	0.970	0.822	1.2%	47,111	40,600	4.9%	15.7%
▼ Hayat Communications Co.	HAYK.KW	NM	1.02	0.00%	1.14	0.119	(0.004)	11.0	0.124	0.051	112.5%	655,037	77,418	150.4%	NM
Telecommunications		14.8	1.75	3.67%				3,379.7			0.0%	34,288,568	2,027,316		11.8%
▼ National Bank of Kuwait	NBKK.KW	25.1	2.22	1.82%	1.27	1.031	(0.019)	7,415.7	1.050	0.792	28.9%	4,017,490	4,192,008	14.7%	8.9%
▼ Gulf Bank	GBKK.KW	23.5	1.23	1.84%	1.13	0.259	(0.001)	789.5	0.260	0.205	18.3%	16,123,222	4,209,413	74.7%	5.2%
= Commercial Bank of Kuwait	CBKK.KW	55.6	1.30	0.00%	0.38	0.500	0.000	996.0	0.605	0.485	0.0%	4,667	2,334	3.6%	2.3%
▼ Ahli Bank of Kuwait	ABKK.KW	NM	0.86	0.00%	0.65	0.256	(0.001)	435.2	0.264	0.186	28.6%	2,140,409	545,423	12.0%	NM
▼ Ahli United Bank - Kuwait	BKME.KW	25.7	1.68	0.00%	0.85	0.324	(0.006)	771.9	0.330	0.258	23.3%	2,407,356	783,960	5.2%	6.6%
▼ Kuwait International Bank	KIBK.KW	NM	0.98	0.00%	1.01	0.224	(0.002)	253.7	0.233	0.198	7.7%	8,351,197	1,880,626	94.8%	0.8%
▼ Burgan Bank	BURG.KW	21.0	1.08	1.79%	1.05	0.234	(0.002)	732.7	0.240	0.195	31.0%	1,356,705	279,484	17.1%	5.1%
▼ Kuwait Finance House	KFH.KW	36.7	3.79	1.07%	1.40	0.841	(0.006)	7,099.3	0.848	0.611	36.6%	8,706,065	7,346,368	15.8%	10.3%
▼ Boubyan Bank	BOUK.KW	67.0	4.79	0.00%	1.05	0.816	(0.007)	2,594.6	0.823	0.516	50.8%	658,146	540,680	8.1%	7.1%
▼ Warba Bank	WARB.KW	17.6	2.36	0.00%	0.99	0.297	(0.003)	467.8	0.301	0.228	25.8%	3,800,956	1,134,901	39.2%	13.4%
▼ Ahli United Bank - Bahrain	AUBK.KW	21.5	2.33	1.26%	1.13	0.290	(0.004)	2,939.0	0.297	0.204	33.0%	11,007,331	3,219,097	33.1%	10.8%
Banks		32.2	2.33	1.13%				24,495.5			30.3%	58,573,544	24,134,292		7.2%

Boursa Kuwait Daily Bulletin

Sunday, November 14, 2021

Company	Reuters Ticker	Valuation Multiples				Price (KWD)		MKT Cap (KWD Mn.)	52 Weeks High (KWD)	52 Weeks Low (KWD)	YTD-21 Return #	Daily Trading Data		YTD-21 Capital Turnover	ROE
		Trailing P/E (X)	Trailing P/BV (X)	Dividend Yield	Beta	Closing	DTD Change					Volume (Shrs.)	Value (KWD)		
▲ Kuwait Insurance Co.	KINS.KW	7.3	0.72	7.27%	0.01	0.393	0.003	76.3	0.459	0.360	2.1%	1,078,223	423,821	11.3%	9.9%
▲ Gulf Insurance Group	GINS.KW	17.2	2.43	0.00%	0.07	1.104	0.039	314.2	1.070	0.536	36.8%	99,208	106,793	1.9%	14.1%
▼ Ahleiah Insurance Co.	AINS.KW	8.5	0.92	4.65%	0.13	0.504	(0.010)	111.1	0.561	0.419	12.6%	10,000	5,040	5.5%	10.8%
= Warba Insurance Co.	WINS.KW	11.3	0.74	4.57%	0.36	0.158	0.000	29.1	0.176	0.077	95.6%	251,732	39,730	95.2%	6.5%
= Kuwait Reinsurance Co.	KWRE.KW	13.7	1.28	1.32%	0.14	0.350	0.000	77.1	0.527	0.212	80.9%	0	0	0.1%	9.4%
▼ First Takaful Insurance Co.	FTIK.KW	NM	0.81	0.00%	0.35	0.061	(0.005)	6.5	0.081	0.034	64.9%	75,000	4,632	8.8%	NM
▼ Wethaq Takaful Insurance Co.	WETH.KW	31.0	0.57	0.00%	0.45	0.063	(0.008)	6.9	0.102	0.020	208.8%	3,346,038	215,127	322.8%	1.8%
= Bahrain Kuwait Insurance Co.	BKIK.KW	8.7	0.85	7.85%	0.02	0.191	0.000	27.3	0.000	0.000	(4.5%)	0	0	0.0%	9.7%
Insurance		12.4	1.28	2.34%				648.5			51.5%	4,860,201	795,143		10.3%
▼ Sokouk Holding Co.	SHCK.KW	NM	0.82	0.00%	1.15	0.034	(0.001)	20.4	0.038	0.022	47.6%	3,578,850	120,822	105.8%	NM
▼ Kuwait Real Estate Co.	KREK.KW	35.1	1.33	0.00%	0.97	0.181	(0.002)	171.5	0.187	0.100	74.4%	11,846,273	2,155,067	225.2%	3.8%
▼ United Real Estate Co.	UREK.KW	NM	0.55	0.00%	0.41	0.082	(0.002)	96.8	0.085	0.043	73.4%	410,800	32,978	11.5%	NM
▲ National Real Estate Co.	NREK.KW	37.6	1.36	0.00%	1.18	0.228	0.004	376.4	0.232	0.071	249.3%	54,583,535	12,554,504	126.5%	3.6%
▼ Salhia Real Estate Co.	SREK.KW	70.7	1.91	5.01%	0.34	0.577	(0.004)	295.8	0.607	0.501	14.7%	339,857	193,662	15.0%	2.7%
▼ Tamdeen Real Estate Co.	TAMK.KW	NM	0.85	0.00%	0.13	0.337	(0.005)	145.6	0.374	0.235	24.8%	29,511	9,967	6.1%	NM
= Ajial Real Estate Entertainment Co.	AREC.KW	21.3	0.47	0.00%	0.49	0.313	0.000	60.9	0.345	0.170	71.0%	644,975	201,209	14.1%	2.2%
▲ Al Massaleh Real Estate Co.	MREC.KW	NM	0.66	0.00%	0.27	0.057	0.000	13.4	0.085	0.030	66.4%	131,540	7,266	22.4%	NM
▼ Arab Real Estate Co.	ARAB.KW	18.5	0.44	0.00%	1.20	0.046	(0.003)	23.2	0.052	0.025	77.0%	4,588,566	212,619	101.3%	2.4%
▼ AL-Enma'a Real Estate Co.*	ENMA.KW	NM	0.84	0.00%	0.67	0.082	(0.004)	37.1	0.091	0.047	70.6%	2,164,249	180,935	111.1%	0.4%
▼ Mabane Co.	MABK.KW	21.4	1.99	0.66%	1.11	0.850	(0.007)	995.7	0.868	0.611	37.1%	309,690	263,179	12.0%	9.3%
▲ Injazzat Real Estate Development Co.	INJA.KW	NM	0.72	0.00%	0.20	0.110	0.002	38.0	0.113	0.067	47.7%	9,365,149	1,013,655	116.9%	0.6%
▼ Investors Holding Group Co.	INVK.KW	NM	0.79	0.00%	1.20	0.016	(0.000)	9.9	0.020	0.013	(9.1%)	6,908,983	110,417	299.3%	NM
▼ The Commercial Real Estate Co.	TIJK.KW	62.2	0.89	2.12%	0.57	0.135	(0.003)	248.5	0.140	0.091	22.1%	1,817,482	244,704	48.3%	1.4%
▼ Sanam Real Estate Co.	SANK.KW	NM	0.94	0.00%	0.38	0.072	(0.001)	8.7	0.082	0.028	107.5%	226,657	16,270	60.6%	NM
▼ A'ayan Real Estate Co.	AYRE.KW	NM	0.68	0.00%	0.59	0.096	(0.002)	39.9	0.116	0.057	65.5%	4,149,244	407,631	128.8%	NM
▼ Aqar Real Estate Investment Co.	AQAR.KW	NM	0.79	0.00%	NA	0.084	(0.004)	20.7	0.098	0.058	42.7%	2,689,996	228,742	101.4%	NM
▼ Kuwait Real Estate Holding Co.	ALAQ.KW	10.4	0.93	0.00%	0.52	0.050	(0.004)	9.6	0.059	0.024	101.6%	1,642,051	85,375	61.1%	8.9%
▼ MAZAYA Holding Co.	MAZA.KW	NM	0.84	0.00%	0.99	0.080	(0.002)	55.1	0.122	0.056	39.9%	12,857,409	1,033,236	396.4%	NM
▼ Tijara Real Estate & Investment Co.	TIJA.KW	48.4	0.61	0.00%	0.31	0.065	(0.002)	24.1	0.073	0.042	54.8%	2,735,022	179,586	210.0%	1.3%
▲ Al TAMEER Real Estate Investment Co.	AMAR.KW	23.8	0.72	0.00%	0.97	0.046	0.001	11.0	0.052	0.018	129.0%	3,369,119	154,919	238.9%	3.0%
▲ Arkan Al-Kuwait Real Estate Co. *	ARKK.KW	22.2	1.10	2.70%	0.24	0.148	0.001	37.2	0.152	0.086	74.5%	110,011	15,980	14.8%	5.0%
= Al-Argan International Real Estate Co.	ARGK.KW	NM	0.41	0.00%	0.38	0.119	0.000	31.5	0.124	0.091	8.2%	5,000	595	1.4%	NM
▼ Munshaat Real Estate Projects Co.	MUNS.KW	NM	2.36	0.00%	0.63	0.067	(0.004)	21.4	0.121	0.045	(5.5%)	15,098	1,005	10.6%	NM
▼ First Dubai For Real Estate Development	FIRST.KW	NM	1.09	0.00%	1.44	0.081	(0.003)	80.6	0.088	0.040	96.6%	2,733,913	221,198	48.9%	1.2%
▼ Kuwait Business Town Real Estate Co.	KBTK.KW	NM	0.85	0.00%	1.09	0.088	(0.006)	53.3	0.104	0.038	122.8%	1,685,868	153,016	93.2%	NM
= Real Estate Asset Management Co.	REAM.KW	NM	0.69	0.00%	0.09	0.090	0.000	9.9	0.000	0.000	0.0%	0	0	0.0%	NM
▼ MENA Real Estate Co. *	MENK.KW	NM	0.76	0.00%	0.98	0.089	(0.002)	12.2	0.105	0.027	219.4%	8,271,093	731,441	558.2%	NM
= Al Mudon International Real Estate Co.	ALMK.KW	NM	0.17	0.00%	0.83	0.021	0.000	2.1	0.027	0.019	14.4%	0	0	110.8%	NM
▲ Real Estate Trade Centers Co.	MARA.KW	NM	0.72	0.00%	0.39	0.118	0.001	17.7	0.123	0.027	327.5%	100	12	29.1%	NM
▼ Kuwait Remal Real Estate Co.	REMA.KW	NM	0.76	0.00%	0.88	0.020	(0.002)	6.0	0.028	0.016	(3.5%)	8,328,899	177,763	101.8%	NM
▼ Mashaer Holding Co.	MASHAER.KW	NM	0.82	0.00%	0.53	0.078	(0.002)	13.9	0.086	0.056	32.6%	1,096,749	85,663	49.7%	NM
= Ajwan Gulf Real Estate Co.	AJWN.KW	NM	0.35	0.00%	0.56	0.011	0.000	2.2	0.000	0.000	0.0%	0	0	0.0%	NM
▼ Al Masaken Intl. Real Estate Dev. Co.	MASKN.KW	NM	0.80	0.00%	0.15	0.052	(0.002)	5.2	0.069	0.025	110.5%	642,417	33,049	531.9%	NM
▲ Dalqan Real Estate Co.	DALQ.KW	NM	1.93	0.00%	NA	0.261	0.001	12.9	0.300	0.198	(4.7%)	34,801	8,738	44.8%	0.6%
= Dar Al Thuraya Real Estate Co.	THURY.KW	31.4	0.95	0.00%	NA	0.104	0.000	15.2	0.128	0.046	64.0%	0	0	4.0%	3.0%
▼ Osos Holding Group Co.	OSOS.KW	14.5	1.09	5.88%	0.29	0.119	(0.003)	12.5	0.131	0.083	32.2%	821,800	96,928	66.6%	7.5%
▲ KFH Capital REIT	BAITAKREIT.KW	NA	NA	1.52%	NA	1.221	0.001	28.8	1.311	1.018	19.6%	4,744	5,793	13.1%	NA
= Land United Real Estate Co.	LAND.KW	NM	0.88	0.00%	NA	0.104	0.000	15.6	0.200	0.095	(19.4%)	1,230,770	128,056	41.2%	NM
Real Estate		NM	1.14	0.94%				3,080.6			50.0%	149,370,221	21,065,978		NM

Boursa Kuwait Daily Bulletin

Sunday, November 14, 2021

Company	Reuters Ticker	Valuation Multiples				Price (KWD)		MKT Cap (KWD Mn.)	52 Weeks High (KWD)	52 Weeks Low (KWD)	YTD-21 Return #	Daily Trading Data		YTD-21 Capital Turnover	ROE
		Trailing P/E (X)	Trailing P/BV (X)	Dividend Yield	Beta	Closing	DTD Change					Volume (Shrs.)	Value (KWD)		
▲ Kuwait Investment Co.	KINV.KW	6.5	1.39	0.00%	0.75	0.301	0.002	165.9	0.317	0.119	146.7%	703,940	211,474	66.0%	21.3%
▲ Commercial Facilities Co.	FACI.KW	5.9	0.75	4.38%	0.53	0.216	0.001	115.9	0.219	0.168	13.7%	288,020	62,184	12.8%	12.6%
▼ Int'l Financial Advisors Co.	IFIN.KW	1.5	1.12	0.00%	1.26	0.117	(0.005)	31.2	0.145	0.059	95.7%	2,070,854	248,171	570.6%	75.6%
▼ National Investment Co.	NINV.KW	8.7	1.11	4.17%	1.25	0.240	(0.002)	210.3	0.248	0.128	77.8%	1,699,682	406,142	50.5%	12.8%
= Kuwait Projects Co.(Holding)	KPRO.KW	NM	1.36	3.49%	0.59	0.141	0.000	282.0	0.170	0.140	(11.3%)	7,489,188	687,522	17.7%	0.3%
▼ Coast Invest. & Development Co.	COAS.KW	NM	1.14	0.00%	1.30	0.117	(0.002)	54.4	0.127	0.050	141.2%	1,078,148	126,397	148.7%	NM
▼ The Securities House Co.	SECH.KW	NM	1.09	0.00%	1.14	0.110	(0.002)	49.5	0.117	0.052	158.2%	6,077,598	670,955	395.2%	NM
▼ Arzan Financial Group For Fin. & Invest.	ARZA.KW	51.3	1.24	0.00%	1.02	0.167	(0.002)	134.1	0.183	0.055	199.3%	5,140,103	863,981	312.8%	2.4%
▲ Kuwait Financial Centre	MARKZ.KW	5.1	0.95	0.00%	0.78	0.199	0.001	95.7	0.207	0.080	138.6%	2,745,029	543,629	108.7%	18.5%
▲ Kuwait & M.E. Financial Inv. Co.	KMEF.KW	12.2	1.22	0.00%	0.58	0.138	0.004	30.4	0.198	0.123	13.1%	100	14	13.9%	10.0%
▼ First Investment Co.	OLAK.KW	NM	0.80	0.00%	1.05	0.083	(0.003)	36.9	0.095	0.039	92.6%	10,319,548	866,411	723.3%	NM
= Al-Mal Investment Co.	MALK.KW	NM	0.25	0.00%	1.14	0.006	0.000	1.8	0.000	0.000	0.0%	0	0	0.0%	NM
▼ Gulf Investment House	GIHK.KW	26.0	4.65	0.00%	1.00	0.308	(0.004)	199.8	0.340	0.076	270.2%	31,379	9,646	76.4%	17.9%
▼ A'ayan Leasing & Investment Co.	AAYA.KW	4.0	1.35	0.00%	1.25	0.159	(0.002)	113.5	0.204	0.097	73.0%	7,234,355	1,158,300	337.7%	34.1%
▼ Bayan Investment Co.	BAYK.KW	NM	0.54	0.00%	0.79	0.056	(0.001)	22.0	0.065	0.032	34.3%	4,796,169	280,056	176.2%	NM
▼ Osoul Investment Co.	OSUL.KW	36.5	0.82	0.00%	0.45	0.095	(0.007)	14.0	0.106	0.061	18.8%	518,168	49,757	36.0%	2.2%
▼ Kuwait Finance & Investment Co.	KFSK.KW	5.7	0.69	0.00%	0.35	0.089	(0.006)	28.7	0.125	0.042	106.7%	3,006,988	264,883	56.8%	12.0%
▼ Kamco Investment Co.	KAMC.KW	6.6	0.87	0.00%	0.44	0.145	(0.003)	49.6	0.149	0.072	96.2%	2,208,877	318,526	75.0%	13.1%
= National International Holding Co.	NIHK.KW	NM	1.03	0.00%	0.67	0.164	0.000	37.3	0.179	0.069	98.1%	2,162,240	357,682	128.6%	NM
▼ UniCap Investment and Finance	UNICAP.KW	8.1	1.03	0.00%	0.68	0.085	(0.001)	20.3	0.097	0.036	101.9%	1,182,612	98,743	111.2%	12.8%
▼ Al Madar Finance & Investment Co.	MADR.KW	NM	1.18	0.00%	0.37	0.119	(0.001)	25.5	0.156	0.086	30.6%	9,702	1,116	99.0%	NM
= Al-Deera Holding	DEER.KW	NM	1.41	0.00%	1.02	0.195	0.000	17.9	0.223	0.018	118.8%	0	0	337.9%	0.1%
▼ Al-Safat Investment Co.	ALSAFAT.KW	3.5	1.50	0.00%	NA	0.137	(0.003)	35.2	0.157	0.120	0.0%	5,091,331	706,509	106.6%	43.3%
▼ Al Salam Group Holding Co.	SAGH.KW	NM	0.33	0.00%	1.30	0.031	(0.002)	8.3	0.037	0.024	22.6%	5,833,402	183,368	322.3%	NM
▼ Ektitab Holding Co.	EKTT.KW	NM	0.50	0.00%	0.97	0.021	(0.000)	6.7	0.024	0.015	38.4%	2,411,618	50,454	201.3%	NM
= Al Madina For Finance & Investment Co.	MADI.KW	1.8	0.43	0.00%	1.18	0.016	0.000	6.6	0.019	0.015	3.2%	0	0	105.7%	23.8%
▼ NOOR Financial Investment Co.	NOOR.KW	9.3	1.87	1.70%	1.21	0.363	(0.003)	145.1	0.399	0.168	113.5%	779,124	283,529	38.4%	20.2%
▼ Tamdeen Investment Co.	TAMI.KW	NM	0.54	0.00%	0.35	0.382	(0.006)	131.8	0.414	0.200	23.2%	1,500	569	3.7%	NM
▼ Kuwait Syrian Holding Co.	KSHC.KW	27.4	1.19	0.00%	0.69	0.048	(0.006)	8.4	0.060	0.025	50.2%	787,937	39,551	34.1%	4.3%
▼ Asiya Capital Investment Co.	ASIYA.KW	35.2	0.58	0.00%	0.52	0.052	(0.002)	41.6	0.057	0.034	41.7%	1,206,275	64,298	61.8%	1.6%
▲ Gulf North Africa Holding Co.	GNAH.KW	69.7	1.12	0.00%	1.03	0.082	0.000	12.3	0.085	0.057	25.8%	341,000	27,868	21.4%	1.6%
▼ Alimtiyaz Investment Group	ALIMK.KW	NM	0.78	0.00%	0.98	0.127	(0.001)	144.0	0.142	0.106	13.4%	5,424,974	690,349	105.3%	NM
▼ Manazel Holding Co.	MANK.KW	28.9	1.10	0.00%	1.36	0.053	(0.002)	22.9	0.060	0.031	68.1%	5,241,990	280,109	259.1%	3.8%
▼ National Industries Group	NIND.KW	7.4	1.07	0.00%	1.44	0.288	(0.006)	411.2	0.296	0.165	63.6%	12,419,498	3,599,414	106.0%	14.5%
▼ Warba Capital Holding Co.	WARBACAP.KW	NM	0.71	0.00%	0.68	0.112	(0.003)	5.6	0.145	0.045	130.5%	125,860	13,874	127.5%	NM
▲ Arabi Holding Group Co.	AGHC.KW	49.6	1.14	0.00%	0.15	0.199	0.003	34.4	0.228	0.102	0.5%	534,474	105,042	85.3%	2.3%
▼ Privatization Holding Co.	KPPC.KW	22.8	0.51	0.00%	0.78	0.066	(0.001)	40.0	0.070	0.039	63.3%	6,554,253	426,743	225.2%	2.2%
▲ Credit Rating & Collection Co.	TAHS.KW	NM	1.48	0.00%	NA	0.043	0.000	7.1	0.056	0.020	95.5%	1,643,103	72,161	16.0%	NM
▲ Egypt Kuwait Holding Co.	EKKH.KW	13.6	2.81	0.00%	0.18	0.446	0.005	502.6	0.453	0.293	38.2%	7,350,674	3,266,357	5.2%	20.7%
▼ GFH Financial Group	GFH.KW	17.1	1.23	1.98%	0.86	0.092	(0.001)	345.5	0.104	0.047	95.1%	44,381,361	4,122,653	85.8%	7.2%
▼ Inovest	INOV.KW	NM	0.76	0.00%	0.74	0.107	(0.004)	32.2	0.134	0.063	63.1%	1,052,012	113,070	292.0%	NM
▼ Al Bareeq Holding	BAREEQ.KW	NM	0.68	0.00%	NA	0.041	(0.002)	30.6	0.102	0.034	(38.0%)	14,896,201	607,546	158.0%	NM
▼ Amar For Finance and Leasing Co.	AMARF.KW	15.3	0.87	0.00%	0.08	0.078	(0.001)	15.5	0.097	0.039	59.1%	35,250	2,650	20.8%	5.6%
▼ Al-Manar Financing & Leasing Co.	ALMANAR.KW	NM	0.74	0.00%	0.53	0.073	(0.003)	22.7	0.085	0.048	48.0%	1,208,176	88,758	33.3%	NM
▼ Boursa Kuwait Securities Co	BOURSA.KW	14.2	7.56	2.02%	0.73	1.980	(0.045)	397.5	2.432	1.091	80.0%	269,179	538,547	44.2%	53.2%
Financial Services		13.5	1.26	0.99%				4,144.8			53.4%	176,351,892	22,509,007		9.3%

Boursa Kuwait Daily Bulletin

Sunday, November 14, 2021

Company	Reuters Ticker	Valuation Multiples				Price (KWD)		MKT Cap (KWD Mn.)	52 Weeks High (KWD)	52 Weeks Low (KWD)	YTD-21 Return #	Daily Trading Data		YTD-21 Capital Turnover	ROE
		Trailing P/E (X)	Trailing P/BV (X)	Dividend Yield	Beta	Closing	DTD Change					Volume (Shrs.)	Value (KWD)		
= Automated Systems Co.	ASCK.KW	NM	0.92	0.00%	0.17	0.108	0.000	10.8	0.122	0.068	56.3%	0	0	38.3%	NM
Technology		NM	0.92	0.00%				10.8			56.3%	0	0		NM
▼ Shamal Az-Zour Al-Oula Power and Water Co.	AZNOULA.KW	20.9	5.07	4.96%	0.68	0.242	(0.002)	266.2	0.276	0.220	(12.6%)	2,659,057	648,262	37.6%	24.2%
Utilities		20.9	5.07	4.96%				266.2			(12.6%)	2,659,057	648,262		24.2%
Boursa Kuwait		28.9	1.82	1.56%				43,098.0			30.60%	497,162,855	99,453,737		6.3%

Year-to-Date 2021 Top Movers & Most Active Stocks

YTD Top % Gainers	Close (KWD)	Percent Change	YTD Top % Losers	Close (KWD)	Percent Change
Real Estate Trade Centers Co.	0.118	327.5%	Yiaco Medical Co.	0.448	(46.7%)
Al Eid Food Co.	0.276	299.0%	Al Bareeq Holding	0.041	(38.0%)
Gulf Investment House	0.308	270.2%	Al Kout for Industrial Projects Co.	0.449	(33.5%)
National Real Estate Co.	0.228	249.3%	National Petroleum Services Co.	0.821	(21.7%)
IFA Hotels & Resorts Co.	0.066	240.0%	Land United Real Estate Co.	0.104	(19.4%)
YTD Most Active by Volume	Close (KWD)	Volume (Shrs.)	YTD Most Active by Value	Close (KWD)	Value (KWD)
Ahli United Bank - Bahrain	0.290	3,352,583,462	Kuwait Finance House	0.841	1,016,337,516
GFH Financial Group	0.092	3,239,858,934	National Bank of Kuwait	1.031	925,490,955
First Investment Co.	0.083	3,225,854,403	Ahli United Bank - Bahrain	0.290	793,323,370
AAN Digital Services Co.	0.019	2,781,013,974	Agility (PWC Logistics)	1.058	604,183,749
MAZAYA Holding Co.	0.080	2,728,205,885	Gulf Bank	0.259	525,691,387

* Different Fiscal Year Company

Disclaimer & Important Disclosures

Kamco Invest is authorized and fully regulated by the Capital Markets Authority ("CMA, Kuwait") and partially regulated by the Central Bank of Kuwait ("CBK").

This document is provided for informational purposes only. Nothing contained in this document constitutes investment, an offer to invest, legal, tax or other advice or guidance and should be disregarded when considering or making investment decisions. In preparing this document, Kamco Invest did not take into account the investment objectives, financial situation and particular needs of any particular person. Accordingly, before acting on this document, investors should independently evaluate the investments and strategies referred to herein and make their own determination of whether it is appropriate in light of their own financial circumstances and objectives. The entire content of this document is subject to copyright with all rights reserved. This research and the information contained herein may not be reproduced, distributed or transmitted in Kuwait or in any other jurisdiction to any other person or incorporated in any way into another document or other material without our prior written consent.

Analyst Certification

Each of the analysts identified in this report, if any and where applicable, certifies, with respect to the sector, companies or securities that the individual analyses, that (1) the views expressed in this report reflect his or her personal views about all of the subject companies and securities and (2) no part of his or her compensation was, is or will be directly or indirectly dependent on the specific recommendations or views expressed in this report.

Kamco Invest Ratings

Kamco Invest research is based on the analysis of regional and country economics, industries and company fundamentals. Kamco Invest company research reflects a long-term (12-month) target price for a company or stock. The ratings bands are:

* **Outperform:** Target Price represents expected returns >= 10% in the next 12 months

* **Neutral:** Target Price represents expected returns between -10% and +10% in the next 12 months

* **Underperform:** Target Price represents an expected return of <-10% in the next 12 months

In certain circumstances, ratings may differ from those implied by a fair value target using the criteria above. Kamco Invest policy is to maintain up-to-date fair value targets on the companies under its coverage, reflecting any material changes to the analyst's outlook on a company. Share price volatility may cause a stock to move outside the rating range implied by Kamco Invest's fair value target. Analysts may not necessarily change their ratings if this happens, but are expected to disclose the rationale behind their view to Kamco Invest clients.

Any terms and conditions proposed by you which are in addition to or which conflict with this Disclaimer are expressly rejected by Kamco Invest and shall be of no force or effect. The information contained in this document is based on current trade, statistical and other public information we consider reliable. We do not represent or warrant that such information is fair, accurate or complete and it should not be relied upon as such. Kamco Invest has no obligation to update, modify or amend this document or to otherwise notify a recipient thereof in the event that any opinion, forecast or estimate set forth herein, changes or subsequently becomes inaccurate. The publication is provided for informational uses only and is not intended for trading purposes. The information on publications does not give rise to any legally binding obligation and/or agreement, including without limitation any obligation to update such information. You shall be responsible for conducting your own investigation and analysis of the information contained or referred to in this document and of evaluating the merits and risks involved in the securities forming the subject matter of this or other such document. Moreover, the provision of certain data/information in the publication may be subject to the terms and conditions of other agreements to which Kamco Invest is a party.

Nothing in this document should be construed as a solicitation or offer, or recommendation, to acquire or dispose of any investment or to engage in any other transaction, or to provide any investment advice or service. This document is directed at Professional Clients and not Retail Clients within the meaning of CMA rules. Any other persons in receipt of this document must not rely upon or otherwise act upon it. Entities and individuals

*Kamco Investment Company (DIFC) Limited ("Kamco Invest DIFC"), Office 205, Level 2, Gate Village 1, Dubai International Financial Centre, a wholly owned subsidiary of Kamco Investment Company KSC (Public), is regulated by the Dubai Financial Services Authority (DFSA). Kamco Invest DIFC may only undertake the financial services activities that fall within the scope of its existing DFSA licence. The information in this document may be distributed by Kamco Invest DIFC on behalf of Kamco Investment Company KSC (Public). This document is intended for Professional Clients or Market Counterparties only as defined by the DFSA, and no other person should act upon it.

This document may not be distributed in Saudi Arabia except to such persons as are permitted under the Offers of Securities Regulations issued by the Capital Market Authority. The Capital Market Authority does not make any representation as to the accuracy or completeness of this document, and expressly disclaims any liability whatsoever for any loss arising from, or incurred in reliance upon, any part of this document. The recipients of this document hereby should conduct their own due diligence on the accuracy of the information relating to the contents of this document. If you do not understand the contents of this document you should consult an authorized financial advisor.

Risk Warnings

Any prices, valuations or forecasts are indicative and are not intended to predict actual results, which may differ substantially from those reflected. The value of an investment may go up as well as down. The value of and income from any investment may fluctuate from day to day as a result of changes in relevant economic markets (including, without limitation, foreseeable or unforeseeable changes in interest rates, foreign exchange rates, default rates, prepayment rates, political or financial conditions, etc.).

Past performance is not indicative of future results. Any opinions, estimates, valuations or projections (target prices and ratings in particular) are inherently imprecise and a matter of judgment. They are statements of opinion and not of facts based on current expectations, estimates and projections, and rely on beliefs and assumptions. Actual outcomes and returns may differ materially from what is expressed or forecasted. There are no guarantees of future performance. Certain transactions, including those involving futures, options, and other derivatives, give rise to substantial risk and are not suitable for all investors. This document does not propose to identify or to suggest all of the risks (direct or indirect) which may be associated with the investments and strategies referred to herein.

Conflict of Interest

Kamco Invest and its affiliates provide full investment banking services, and they and their directors, officers and employees, may take positions which conflict with the views expressed in this document. Salespeople, traders, and other professionals of Kamco Invest may provide oral or written market commentary or trading strategies to our clients and our proprietary trading desks that reflect opinions that are contrary to the opinions expressed in this document. Our asset management area, our proprietary trading desks and investing businesses may make investment decisions that are inconsistent with the recommendations or views expressed in this document. Kamco Invest may have or seek investment relationships for which it will receive compensation from the companies that are the subject of this document. Facts and views presented in this document have not been reviewed by, and may not reflect information known to, professionals in other Kamco Invest business areas, including investment banking personnel. United Gulf Bank, Bahrain owns majority of Kamco Invest's shareholding and this ownership may create, or may create the appearance of, conflicts of interest.

No Liability & Warranty

Kamco Invest makes neither implied nor expressed representations or warranties and, to the fullest extent permitted by applicable law, we hereby expressly disclaim any and all express, implied and statutory representations and warranties of any kind, including, without limitation, any warranty as to accuracy, timeliness, completeness, and fitness for a particular purpose and/or non-infringement. Kamco Invest will accept no liability in any event including (without limitation) your reliance on the information contained in this document, any negligence for any damages or loss of any kind, including (without limitation) direct, indirect, incidental, special or consequential damages, expenses or losses arising out of, or in connection with your use or inability to use this document, or in connection with any error, omission, defect, computer virus or system failure, or loss of any profit, goodwill or