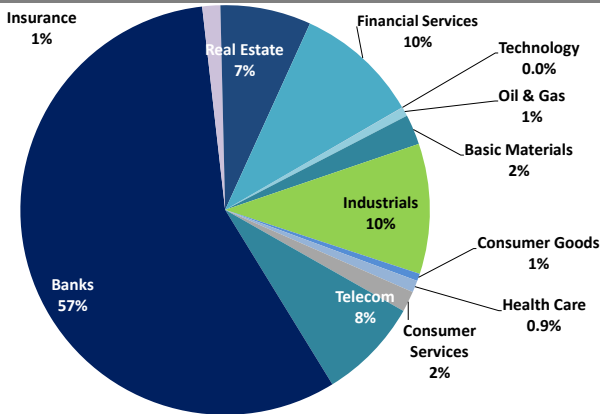


Boursa Kuwait Daily Report

November 2, 2021

Sector Weight by Market Cap



Top 10 Companies by Market Capitalization

Company Name	Market Cap. (Mn KWD)	P/E (X)	ROE* (%)
1- Kuwait Finance House	7,158.4	37.0	10.3%
2- National Bank of Kuwait	7,099.2	24.0	8.9%
3- Ahli United Bank - Bahrain	2,979.5	21.8	10.8%
4- Zain	2,596.2	13.9	16.2%
5- Boubyan Bank	2,492.9	64.4	7.1%
6- Agility (PWC Logistics)	2,223.4	29.0	6.5%
7- Commercial Bank of Kuwait	996.0	55.6	2.3%
8- Mabanee Co.	932.4	20.1	9.3%
9- Ahli United Bank - Kuwait	779.1	25.9	6.6%
10- Gulf Bank	762.0	22.7	5.2%
Total	28,019	26.50	9.0%

*: ROE is calculated based on TTM 1H-2021 net profit & shareholders' equity as of 30-June-21

Top Movers and Most Active Stocks

Today's Top % Gainers	Close (KWD)	Change (KWD)	Percent Change
Wethaq Takaful Insurance Co.	0.098	0.058	141.9%
First Takaful Insurance Co.	0.077	0.023	41.5%
Umm Al-Qaiwain General Investments Co.	0.093	0.016	20.8%
Jazeera Airways Co.	1.265	0.195	18.2%
Ajial Real Estate Entertainment Co.	0.340	0.049	16.8%


Today's Top % Losers	Close (KWD)	Change (KWD)	Percent Change
Kuwait & M.E. Financial Inv. Co.	0.128	(0.010)	(7.2%)
Munshaat Real Estate Projects Co.	0.070	(0.004)	(5.6%)
Kuwait Remal Real Estate Co.	0.019	(0.001)	(5.1%)
Kuwait Hotels Co.	0.101	(0.005)	(4.7%)
Boursa Kuwait Securities Co.	2.109	(0.102)	(4.6%)

Today's Most Active by Volume	Close (KWD)	Percent Change	Volume (Shares)
GFH Financial Group	0.085	5.6%	123,515,848
Wethaq Takaful Insurance Co.	0.098	141.9%	48,241,027
Alimtiq Investment Group	0.129	(3.7%)	29,217,513
AAN Digital Services Co.	0.018	3.5%	28,244,758
National Industries Group	0.279	0.4%	24,761,155

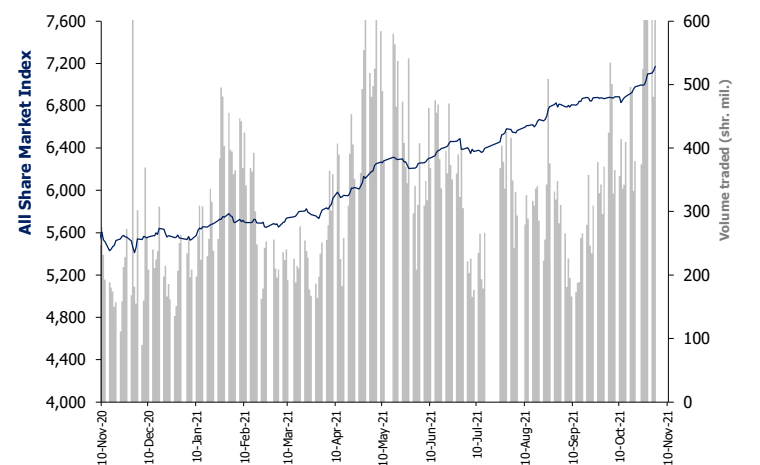
Source: Boursa Kuwait, Kamco Invest Research

Market Capitalization - Sector Returns

	Market Cap. (KWD Mn)	DTD %	MTD %	YTD %
Boursa Kuwait	42,499.1	▲	0.6%	28.8%
Oil & Gas	306.8	▼	(0.5%)	9.4%
Basic Materials	1,003.6	▲	0.8%	25.2%
Industrials	4,345.0	▲	0.9%	36.8%
Consumer Goods	242.9	▼	(0.3%)	4.6%
Health Care	394.3	=	0.0%	(3.8%)
Consumer Services	691.2	▲	7.7%	64.8%
Telecommunications	3,388.2	▲	0.3%	0.3%
Banks	24,066.1	▲	0.4%	28.0%
Insurance	604.4	▲	2.6%	41.2%
Real Estate	3,029.9	▲	0.8%	47.6%
Financial Services	4,151.9	▲	0.1%	53.7%
Technology	10.8	=	0.0%	56.3%
Utilities	264.0	▲	1.3%	-13.4%

Market Breadth		94		36		37
Benchmark Return	Closing	DTD	DTD	MTD	YTD	
	Value	Chg	% Chg	% Chg	% Chg	
Premier Market Index	7,741.62	25.0	0.3%	0.6%	27.9%	
Main 50 Index	6,292.14	78.6	1.3%	2.0%	35.7%	
Main Market Index	6,087.00	76.5	1.3%	1.8%	33.7%	
All Share Market Index	7,173.95	40.1	0.6%	0.9%	29.4%	
Market Cap (KWD Mn)	42,499.13	234.5	0.6%	0.9%	28.8%	

Index Performance relative to Volume



Market Trading Data and Volatility

Trading Indicators	Today's Value	DTD Chg	DTD % Chg	Average Daily YTD 2021	YTD 2020
Volume (Shrs Mn)	752.4	271.9	56.6%	341.1	210.3
Value Traded (KWD Mn)	102.3	28.46	38.6%	53.7	38.8
No. of Trades	24,032	6,094	34.0%	12,308	9,203

Today's Most Active by Value	Close (KWD)	Percent Change	Value (KWD)
GFH Financial Group	0.085	5.6%	10,321,026
National Industries Group	0.279	0.4%	6,949,602
ALAFCO Aviation Lease & Finance Co.	0.245	3.8%	4,194,140
Ahli United Bank - Bahrain	0.294	0.7%	3,979,892
Wethaq Takaful Insurance Co.	0.098	141.9%	3,970,288

Boursa Kuwait - Premier Market

Tuesday, November 2, 2021

	Premier Market Stocks	Closing Price			Market Capitalization			Valuation Multiples				ROE	YTD-21 Price Return	YTD-21 Trading Indicators	
		KWD	DTD Chg. (KWD)	D-T-D Return	KWD Mn	Weight in Premier Index	Weight in Boursa Kuwait	P/E (X)	P/BV (X)	Yield	Beta			Volume (Mn Shrs)	Value (KWD Mn)
▲	National Bank of Kuwait	0.987	0.001	0.1%	7,099	22.5%	16.7%	24.0	2.12	1.9%	1.27	8.9%	23.4%	1,018.53	883.08
▼	Gulf Bank	0.250	(0.002)	(0.8%)	762	2.4%	1.8%	22.7	1.19	1.9%	1.13	5.2%	14.2%	2,142.87	491.97
=	Kuwait International Bank	0.223	0.000	0.0%	253	0.8%	0.6%	NM	0.98	0.0%	1.01	0.8%	7.2%	1,010.03	220.47
▲	Burgan Bank	0.241	0.002	0.8%	664	2.1%	1.6%	19.0	0.98	2.0%	1.05	5.1%	18.8%	517.52	116.65
▲	Kuwait Finance House	0.848	0.006	0.7%	7,158	22.7%	16.8%	37.0	3.83	1.1%	1.41	10.3%	37.8%	1,285.23	973.97
▼	Boubyan Bank	0.784	(0.003)	(0.4%)	2,493	7.9%	5.9%	64.4	4.60	0.0%	1.05	7.1%	44.9%	246.73	163.35
▲	National Investments Co	0.239	0.002	0.8%	209	0.7%	0.5%	8.6	1.11	4.2%	1.25	12.8%	77.0%	426.39	76.79
=	Kuwait Projects Co. (Holding)	0.145	0.000	0.0%	290	0.9%	0.7%	NM	1.40	3.4%	0.59	0.3%	(8.8%)	307.20	49.23
▼	Al Imtiaz Investment Group	0.129	(0.005)	(3.7%)	146	0.5%	0.3%	NM	0.79	0.0%	0.98	NM	15.2%	1,144.75	141.88
=	Kuwait Real Estate Co.	0.174	0.000	0.0%	165	0.5%	0.4%	33.7	1.28	0.0%	0.97	3.8%	67.6%	2,015.08	275.42
▲	Mabane Co.	0.796	0.006	0.8%	932	3.0%	2.2%	20.1	1.87	0.7%	1.11	9.3%	28.4%	134.52	97.05
▲	National Industries Group (Holding)	0.279	0.001	0.4%	398	1.3%	0.9%	7.2	1.04	0.0%	1.44	14.5%	58.5%	1,444.13	323.38
=	Gulf Cable and Electrical Industries	1.000	0.000	0.0%	210	0.7%	0.5%	37.5	1.13	5.0%	0.94	3.0%	32.5%	59.19	48.09
▲	Boubyan Petrochemical Co.	0.967	0.013	1.4%	517	1.6%	1.2%	27.5	2.27	5.5%	0.72	8.3%	51.1%	98.89	84.76
▲	Qurain Petrochemicals Industries Co.	0.377	0.001	0.3%	414	1.3%	1.0%	30.2	0.99	4.0%	0.75	3.3%	11.5%	128.77	49.45
▲	Agility Public Warehousing Co.	0.997	0.007	0.7%	2,223	7.0%	5.2%	29.0	1.90	0.9%	1.49	6.5%	62.2%	637.31	565.42
▲	Mobile Telecommunications Co.	0.600	0.003	0.5%	2,596	8.2%	6.1%	13.9	2.24	3.3%	1.36	16.2%	(1.0%)	640.24	388.91
▼	Human Soft Holding Co.	3.340	(0.015)	(0.4%)	408	1.3%	1.0%	6.1	3.85	11.9%	0.49	63.0%	(12.1%)	48.14	173.84
▲	ALAFCO Aviation Lease and Finance Co.	0.245	0.009	3.8%	233	0.7%	0.5%	NM	0.78	0.0%	0.86	NM	13.4%	432.13	96.69
▲	Ahli United Bank (B.S.C)	0.294	0.002	0.7%	2,980	9.4%	7.0%	21.8	2.36	1.2%	1.13	10.8%	34.8%	3,276.12	770.97
▲	Warba Bank	0.288	0.003	1.1%	454	1.4%	1.1%	17.1	2.29	0.0%	0.99	13.4%	22.0%	584.22	149.02
▼	Mezzan Holding Co.	0.622	(0.004)	(0.6%)	198	0.6%	0.5%	19.7	1.78	2.8%	0.44	9.1%	4.3%	95.47	58.73
▲	Integrated holding Co.	0.372	0.001	0.3%	94	0.3%	0.2%	NM	1.56	0.0%	0.48	NM	1.6%	237.74	93.59
▲	Shamal Az-Zour Al-Oula Power and Water	0.240	0.003	1.3%	264	0.8%	0.6%	20.8	5.02	5.0%	0.68	24.2%	(13.4%)	395.39	98.80
▼	Boursa Kuwait Securities Co.	2.109	(0.102)	(4.6%)	423	1.3%	1.0%	15.1	8.05	1.9%	0.74	53.2%	91.7%	86.86	117.03
Subtotal- Premier Market Stocks		7,741.62	24.96	0.3%	31,586	100%	74%	24.4	2.22	1.70%		9.1%	27.9%	18,413.45	6,508.54
Remaining of the Market					10,914		26%	55.8	1.16	1.24%		2.1%		50,837.58	4,401.66

Source: Kamco Invest Research

Boursa Kuwait Daily Bulletin

Tuesday, November 2, 2021

Company	Reuters Ticker	Valuation Multiples				Price (KWD)		MKT Cap (KWD Mn.)	52 Weeks High (KWD)	52 Weeks Low (KWD)	YTD-21 Return #	Daily Trading Data		YTD-21 Capital Turnover	ROE
		Trailing P/E (X)	Trailing P/BV (X)	Dividend Yield	Beta	Closing	DTD Change					Volume (Shrs.)	Value (KWD)		
▲ Senergy Holding Co.	SENE.KW	NM	1.08	0.00%	1.11	0.053	0.000	10.6	0.057	0.021	150.0%	1,356,180	70,842	160.9%	NM
= Independent Petroleum Group	IPGK.KW	16.2	1.16	4.69%	0.26	0.614	0.000	115.7	0.669	0.447	29.3%	0	0	1.8%	7.2%
▼ National Petroleum Services Co.	NAPS.KW	15.1	2.34	7.29%	0.19	0.851	(0.019)	85.1	1.150	0.709	(18.9%)	8,520	7,245	1.3%	15.4%
▲ The Energy House Co.	ENER.KW	23.1	1.97	0.00%	0.94	0.054	0.000	40.2	0.056	0.025	88.7%	246,697	12,883	6.7%	8.6%
▲ Gulf Petroleum Investment	GPIK.KW	NM	0.39	0.00%	1.08	0.029	0.000	13.0	0.030	0.018	48.2%	12,309,830	353,695	351.6%	NM
▲ Burgan Co. for Drilling, Tdg. & Maint. *	ABAR.KW	16.7	0.64	1.66%	NA	0.174	0.001	42.2	0.207	0.127	12.3%	676,782	117,377	148.1%	3.8%
Oil & Gas		31.0	1.15	4.02%				306.8			9.4%	14,598,009	562,042		3.7%
= Kuwait Foundry Co.	KFDC.KW	NM	1.88	1.89%	0.63	0.370	0.000	26.8	0.430	0.258	38.1%	27,621	10,222	13.5%	NM
▲ Boubyan Petrochemicals Co.*	BPCC.KW	27.5	2.27	5.53%	0.72	0.967	0.013	517.2	0.977	0.625	51.1%	1,114,746	1,082,258	18.5%	8.3%
= Al Kout for Industrial Projects Co.	ALKK.KW	NM	1.87	4.45%	0.03	0.449	0.000	45.3	0.675	0.449	(33.5%)	0	0	0.0%	NM
▲ Qurain Petrochemical Industries Co. *	ALQK.KW	30.2	0.99	4.02%	0.75	0.377	0.001	414.4	0.447	0.334	11.5%	1,177,238	443,350	11.7%	3.3%
Basic Materials		32.7	1.47	4.76%				1,003.6			25.2%	2,319,605	1,535,830		4.5%
▼ Specialities Group Holding Co.	SPEC.KW	60.1	0.84	0.00%	0.43	0.152	(0.002)	25.1	0.169	0.073	94.1%	1,301,073	198,237	280.1%	1.4%
▼ Kuwait Cement Co.	KCEM.KW	NM	0.97	0.00%	0.52	0.254	(0.002)	186.3	0.266	0.215	10.0%	162,167	41,430	8.9%	NM
= Gulf Cable & Electrical Ind. Co.	CABL.KW	37.5	1.13	5.00%	0.94	1.000	0.000	209.9	1.000	0.728	32.5%	915,817	917,486	28.2%	3.0%
▼ Heavy Eng'g Ind. & Shipbuilding Co.	SHIP.KW	12.4	1.33	4.14%	0.59	0.483	(0.002)	87.1	0.524	0.392	21.7%	181,769	88,285	77.4%	10.7%
▲ Kuwait Portland Cement Co.	PCEM.KW	13.3	1.43	4.04%	0.46	0.991	0.006	99.3	1.000	0.766	26.2%	38,101	37,771	14.1%	10.7%
= Shuaiba Industrial Co.	PAPE.KW	16.7	1.21	4.54%	0.12	0.217	0.000	21.9	0.223	0.145	40.0%	0	0	4.9%	7.3%
▲ Metal & Recycling Co.	MRCK.KW	NM	1.72	0.00%	0.19	0.115	0.006	13.5	0.196	0.051	116.6%	116,680	13,051	13.8%	NM
▲ ACICO Industries Co.	ACIC.KW	NM	0.55	0.00%	0.38	0.136	0.002	41.0	0.136	0.082	51.3%	5,723,667	790,963	60.4%	NM
▲ Hilal Cement Co.	HCCK.KW	NM	0.75	0.00%	0.10	0.143	0.005	7.2	0.180	0.069	57.1%	33,664	4,464	2.3%	NM
▲ National Industries Co.	NIBM.KW	24.2	0.87	0.00%	0.17	0.210	0.002	78.2	0.218	0.150	34.6%	57,710	12,175	4.0%	3.6%
▲ Equipment Holding Co.	EQUI.KW	NM	0.93	0.00%	1.02	0.063	0.004	5.1	0.068	0.027	113.5%	3,703,976	233,525	173.2%	NM
▼ National Co. for Consumer Industries	NCCI.KW	NM	2.03	0.00%	NA	0.162	(0.002)	14.6	0.198	0.038	231.3%	3,692,957	592,855	645.2%	NM
▲ Salbookh Trading Co.	SALB.KW	NM	1.12	0.00%	0.59	0.060	0.002	6.3	0.072	0.035	59.2%	1,740,691	102,539	214.7%	NM
▲ Agility (PWC Logistics)	AGLT.KW	29.0	1.90	0.87%	1.49	0.997	0.007	2,223.4	1.077	0.592	62.2%	2,611,366	2,611,740	28.6%	6.5%
▼ Educational Holding Group*	EDUK.KW	10.4	2.03	0.00%	0.47	0.804	(0.003)	76.6	0.900	0.433	145.1%	30,998	24,832	17.6%	19.5%
▲ National Cleaning Co.	CLEA.KW	NM	0.51	0.00%	0.79	0.068	0.003	17.0	0.078	0.045	26.9%	5,215,554	350,563	94.5%	NM
▲ Kuwait & Gulf Link Transport Co.	KGLK.KW	NM	0.40	0.00%	0.76	0.057	0.001	16.6	0.064	0.044	8.1%	1,271,722	72,452	45.2%	NM
▼ Kuwait Co. For Process Plant Const. & Cont.	KCPC.KW	8.4	2.05	7.77%	0.48	0.535	(0.011)	62.0	0.629	0.367	39.4%	140,142	75,437	25.0%	24.3%
▼ Humansoft Holding Co.	HUMN.KW	6.1	3.85	11.92%	0.49	3.340	(0.015)	408.3	4.030	3.200	(12.1%)	317,458	1,060,513	39.4%	63.0%
▲ Gulf Franchising Co.	GFCI.KW	6.2	1.54	0.00%	NA	0.083	0.003	3.3	0.115	0.032	38.3%	52,133	4,291	4.0%	24.6%
= National Shooting Co.	SHOOTING.KW	NM	0.71	0.00%	1.21	0.039	0.000	10.9	0.043	0.019	108.6%	0	0	98.6%	NM
▼ Combined Group Contracting Co.	CGCK.KW	NM	1.59	1.67%	0.65	0.359	(0.003)	61.6	0.399	0.196	78.6%	676,711	241,080	85.2%	NM
▲ United Projects Group	UPAC.KW	NM	1.15	0.00%	0.05	0.305	0.020	116.7	0.365	0.186	5.2%	316,042	96,721	8.1%	0.9%
▲ ALAFCO Aviation Lease & Finance Co.*	ALAF.KW	NM	0.78	0.00%	0.86	0.245	0.009	233.3	0.245	0.198	13.4%	17,312,619	4,194,140	45.4%	NM
= Mubarrad Holding Co.	MBRD.KW	30.3	0.95	0.00%	0.95	0.119	0.000	19.5	0.123	0.063	66.4%	1,341,442	161,687	241.3%	3.1%
= KGL Logistics Co.	LOGK.KW	NM	0.25	0.00%	0.77	0.032	0.000	23.4	0.034	0.027	12.8%	0	0	21.7%	NM
▲ Integrated holding Co.	INTEGRATED.KW	NM	1.56	0.00%	0.48	0.372	0.001	94.1	0.399	0.310	1.6%	2,694,026	999,148	94.0%	NM
▲ Umm Al-Qaiwain General Investments Co.	QIC.KW	9.3	0.63	5.38%	0.18	0.093	0.016	33.8	0.088	0.063	24.0%	95,681	8,332	1.2%	6.8%
▲ Fujairah Cement Industries Co.	FCEM.KW	NM	0.27	0.00%	0.46	0.055	0.001	19.4	0.056	0.028	59.4%	1,504,896	81,815	13.7%	NM
▲ Ras-Al-Khaimah for White Cement Co.	RKWC.KW	30.4	1.12	3.60%	0.14	0.139	0.002	69.5	0.175	0.061	113.8%	463,404	61,333	4.7%	3.7%
▼ Jassim Transport & Stevedoring Co.	JTC.KW	26.3	1.45	4.96%	NA	0.403	(0.002)	60.5	0.450	0.397	0.0%	642,051	258,899	21.4%	5.5%
Industrials		33.4	1.43	2.31%				4,345.0			36.8%	52,354,517.0	13,335,763		4.3%

Boursa Kuwait Daily Bulletin

Tuesday, November 2, 2021

Company	Reuters Ticker	Valuation Multiples				Price (KWD)		MKT Cap (KWD Mn.)	52 Weeks High (KWD)	52 Weeks Low (KWD)	YTD-21 Return #	Daily Trading Data		YTD-21 Capital Turnover	ROE
		Trailing P/E (X)	Trailing P/BV (X)	Dividend Yield	Beta	Closing	DTD Change					Volume (Shrs.)	Value (KWD)		
▲ Palms Agro Production Co.	PAPK.KW	NM	0.71	0.00%	0.26	0.080	0.004	4.2	0.090	0.050	23.7%	5,293	422	1.7%	NM
▲ Livestock Transport & Trading Co.	CATT.KW	NM	1.05	0.00%	0.26	0.190	0.001	41.2	0.210	0.177	8.0%	499,387	94,499	10.2%	NM
▼ Mezzan Holding Co.	MEZZ.KW	19.7	1.78	2.78%	0.44	0.622	(0.004)	197.5	0.679	0.554	4.3%	471,274	293,631	30.1%	9.1%
Consumer Goods		35.8	1.56	2.26%				242.9			4.6%	975,954	388,552		4.4%
= Advanced Technology Co.	ATCK.KW	13.3	1.22	2.94%	0.01	0.511	0.000	76.7	0.600	0.401	(10.4%)	29,495	14,442	0.8%	9.2%
= Yiac Medical Co.	YIAC.KW	NM	4.55	0.00%	NA	0.445	0.000	7.6	0.825	0.403	(47.0%)	0	0	1.2%	NM
= Al-Maidan Clinic For Oral Health Services Co.	MIDAN.KW	31.6	19.05	0.81%	NA	1.240	0.000	310.0	1.240	1.200	0.0%	0	0	0.1%	60.3%
Health Care		25.6	4.89	1.20%				394.3			(3.8%)	29,495	14,442		19.1%
= Kuwait National Cinema Co.	KCIN.KW	NM	1.28	0.00%	0.30	0.851	0.000	86.0	0.990	0.700	13.5%	0	0	1.2%	NM
▼ Kuwait Hotels Co.	KHOT.KW	11.4	1.35	0.00%	NA	0.101	(0.005)	5.8	0.113	0.050	69.7%	10,201	1,027	19.9%	11.8%
▼ Sultan Center Food Products Co.	SCFK.KW	48.4	1.43	0.00%	0.42	0.230	(0.005)	66.6	0.237	0.097	130.0%	6,038,059	1,396,585	53.5%	3.0%
▲ IFA Hotels & Resorts Co.*	IFAH.KW	NM	9.39	0.00%	0.29	0.068	0.007	42.9	0.063	0.019	246.2%	9,639,364	639,563	132.4%	NM
▲ Oula Fuel Marketing Co.	OULA.KW	14.4	0.99	2.90%	0.47	0.170	0.004	68.8	0.173	0.114	38.2%	1,242,737	210,661	22.4%	6.9%
▼ Kuwait Resorts Co.	MUNK.KW	29.3	0.72	2.01%	0.70	0.099	(0.001)	20.9	0.105	0.060	57.1%	1,266,164	125,439	177.3%	2.4%
▲ Jazeera Airways Co.	JAZK.KW	NM	193.02	0.00%	0.72	1.265	0.195	253.0	1.073	0.588	73.3%	2,306,720	2,739,099	45.2%	NM
▲ Soor Fuel Marketing Co.	SOOR.KW	19.7	1.08	2.88%	0.47	0.172	0.009	69.6	0.173	0.116	41.0%	987,920	167,566	10.9%	5.5%
▼ Future Kid Entertainment and R.E Co.	KIDK.KW	NM	0.84	0.00%	0.02	0.083	(0.001)	9.6	0.122	0.064	(2.7%)	375,268	30,900	169.5%	NM
▲ Jiyad Holding Co	JIYAD.KW	NM	0.67	0.00%	0.64	0.070	0.007	24.5	0.073	0.036	58.0%	4,962,596	344,192	36.9%	NM
▲ Al Eid Food Co.	ALEID.KW	23.4	2.19	1.38%	NA	0.301	0.004	43.5	0.302	0.069	335.2%	2,010,021	606,990	117.8%	9.4%
Consumer Services		NM	1.95	0.73%				691.2			64.8%	28,839,050	6,262,021		NM
▲ Zain	ZAIN.KW	13.9	2.24	3.33%	1.36	0.600	0.003	2,596.2	0.641	0.581	(1.0%)	3,210,306	1,921,470	14.8%	16.2%
▼ National Mobile Telecom Co.	OORE.KW	38.7	0.63	2.23%	0.47	0.668	(0.005)	336.7	0.711	0.620	6.5%	4,013	2,683	1.7%	1.6%
▲ AAN digital services Co.	AAN.KW	NM	0.67	0.00%	1.32	0.018	0.001	15.6	0.018	0.011	44.4%	28,244,758	496,608	259.8%	NM
= Kuwait Telecommunication Co.	STC.KW	13.2	2.06	6.96%	0.55	0.862	0.000	430.5	0.970	0.822	1.2%	58,890	50,711	4.7%	15.7%
▲ Hayat Communications Co.	HAYK.KW	NM	0.85	0.00%	1.13	0.099	0.001	9.2	0.103	0.051	76.8%	1,117,429	109,644	134.2%	NM
Telecommunications		14.9	1.75	3.66%				3,388.2			0.3%	32,635,396	2,581,115		11.8%
▲ National Bank of Kuwait	NBKK.KW	24.0	2.12	1.90%	1.27	0.987	0.001	7,099.2	0.996	0.792	23.4%	2,107,826	2,081,914	14.2%	8.9%
▼ Gulf Bank	GBKK.KW	22.7	1.19	1.90%	1.13	0.250	(0.002)	762.0	0.257	0.205	14.2%	6,190,673	1,553,011	70.3%	5.2%
= Commercial Bank of Kuwait	CBKK.KW	55.6	1.30	0.00%	0.38	0.500	0.000	996.0	0.605	0.485	0.0%	0	0	3.6%	2.3%
▲ Ahli Bank of Kuwait	ABKK.KW	NM	0.84	0.00%	0.65	0.252	0.008	428.4	0.250	0.186	26.6%	3,942,096	1,002,774	11.3%	NM
= Ahli United Bank - Kuwait	BKME.KW	25.9	1.70	0.00%	0.85	0.327	0.000	779.1	0.330	0.258	24.5%	165,729	54,150	4.9%	6.6%
= Kuwait International Bank	KIBK.KW	NM	0.98	0.00%	1.01	0.223	0.000	252.6	0.233	0.198	7.2%	7,107,846	1,590,406	89.2%	0.8%
▲ Burgan Bank	BURG.KW	19.0	0.98	1.97%	1.05	0.241	0.002	664.3	0.240	0.200	18.8%	3,900,193	940,590	18.8%	5.1%
▲ Kuwait Finance House	KFH.KW	37.0	3.83	1.06%	1.41	0.848	0.006	7,158.4	0.845	0.611	37.8%	4,633,146	3,923,671	15.2%	10.3%
▼ Boubyan Bank	BOUK.KW	64.4	4.60	0.00%	1.05	0.784	(0.003)	2,492.9	0.806	0.516	44.9%	1,132,079	890,368	7.8%	7.1%
▲ Warba Bank	WARB.KW	17.1	2.29	0.00%	0.99	0.288	0.003	453.6	0.288	0.228	22.0%	7,619,330	2,202,321	37.1%	13.4%
▲ Ahli United Bank - Bahrain	AUBK.KW	21.8	2.36	1.24%	1.13	0.294	0.002	2,979.5	0.296	0.204	34.8%	13,535,504	3,979,892	32.3%	10.8%
Banks		31.7	2.29	1.15%				24,066.1			28.0%	50,334,422	18,219,097		7.2%

Boursa Kuwait Daily Bulletin

Tuesday, November 2, 2021

Company	Reuters Ticker	Valuation Multiples				Price (KWD)		MKT Cap (KWD Mn.)	52 Weeks High (KWD)	52 Weeks Low (KWD)	YTD-21 Return #	Daily Trading Data		YTD-21 Capital Turnover	ROE
		Trailing P/E (X)	Trailing P/BV (X)	Dividend Yield	Beta	Closing	DTD Change					Volume (Shrs.)	Value (KWD)		
= Kuwait Insurance Co.	KINS.KW	7.4	0.73	7.20%	0.01	0.397	0.000	77.0	0.459	0.360	3.1%	1,408,662	559,047	5.4%	9.9%
▲ Gulf Insurance Group	GINS.KW	14.4	2.03	0.00%	0.07	0.925	0.023	263.2	0.990	0.536	14.6%	168,889	155,515	1.6%	14.1%
▼ Ahleiah Insurance Co.	AINS.KW	8.4	0.91	4.69%	0.12	0.499	(0.001)	110.0	0.561	0.419	11.5%	437,047	218,663	5.4%	10.8%
= Warba Insurance Co.	WINS.KW	11.3	0.74	4.55%	0.37	0.159	0.000	29.3	0.176	0.077	96.9%	772,426	122,442	92.5%	6.5%
= Kuwait Reinsurance Co.	KWRE.KW	13.9	1.30	1.29%	0.14	0.356	0.000	78.4	0.527	0.212	84.0%	0	0	0.1%	9.4%
▲ First Takaful Insurance Co.	FTIK.KW	NM	1.03	0.00%	0.35	0.077	0.023	8.2	0.062	0.034	108.1%	906,536	65,013	8.3%	NM
▲ Wethaq Takaful Insurance Co.	WETH.KW	48.4	0.89	0.00%	0.45	0.098	0.058	10.8	0.049	0.020	381.4%	48,241,027	3,970,288	277.6%	1.8%
= Bahrain Kuwait Insurance Co.	BKIK.KW	8.7	0.85	7.85%	0.02	0.191	0.000	27.3	0.000	0.000	(4.5%)	0	0	0.0%	9.7%
Insurance		11.5	1.19	2.51%				604.4			41.2%	51,934,587	5,090,968		10.3%
▲ Sokouk Holding Co.	SHCK.KW	NM	0.83	0.00%	1.15	0.035	0.001	20.6	0.036	0.022	48.9%	13,481,415	463,282	96.8%	NM
= Kuwait Real Estate Co.	KREK.KW	33.7	1.28	0.00%	0.97	0.174	0.000	164.8	0.185	0.100	67.6%	5,028,946	874,811	212.7%	3.8%
▼ United Real Estate Co.	UREK.KW	NM	0.54	0.00%	0.41	0.080	(0.001)	95.0	0.084	0.043	70.2%	425,134	34,180	10.9%	NM
▲ National Real Estate Co.	NREK.KW	36.3	1.32	0.00%	1.18	0.220	0.001	363.2	0.232	0.071	237.0%	13,445,845	2,966,318	119.3%	3.6%
▲ Salhia Real Estate Co.	SREK.KW	71.5	1.94	4.95%	0.34	0.584	0.003	299.4	0.599	0.501	16.1%	125,265	73,061	14.4%	2.7%
▼ Tamdeen Real Estate Co.	TAMK.KW	NM	0.91	0.00%	0.13	0.359	(0.001)	155.1	0.374	0.235	33.0%	20,000	7,180	5.9%	NM
▲ Ajial Real Estate Entertainment Co.	AREC.KW	23.1	0.51	0.00%	0.49	0.340	0.049	66.1	0.298	0.170	85.8%	1,408,964	438,962	12.5%	2.2%
▲ Al Massaleh Real Estate Co.	MREC.KW	NM	0.66	0.00%	0.27	0.056	0.001	13.2	0.085	0.030	64.3%	1,060,659	58,906	21.2%	NM
▲ Arab Real Estate Co.	ARAB.KW	20.6	0.49	0.00%	1.19	0.051	0.001	25.8	0.052	0.025	96.9%	13,591,189	679,303	93.0%	2.4%
▲ AL-Enma'a Real Estate Co.*	ENMA.KW	NM	0.89	0.00%	0.67	0.087	0.003	39.1	0.085	0.047	79.5%	7,376,889	635,582	106.2%	0.4%
▲ Mabanee Co.	MABK.KW	20.1	1.87	0.71%	1.11	0.796	0.006	932.4	0.810	0.611	28.4%	294,171	234,093	11.5%	9.3%
▲ Injazzat Real Estate Development Co.	INJA.KW	NM	0.67	0.00%	0.20	0.103	0.002	35.6	0.110	0.067	38.3%	10,078,765	1,024,132	97.8%	0.6%
▲ Investors Holding Group Co.	INVK.KW	NM	0.77	0.00%	1.20	0.016	0.000	9.7	0.020	0.013	(11.4%)	12,403,124	192,656	279.5%	NM
= The Commercial Real Estate Co.	TIJK.KW	63.6	0.91	2.07%	0.57	0.138	0.000	254.0	0.139	0.091	24.8%	2,864,466	397,230	47.4%	1.4%
▲ Sanam Real Estate Co.	SANK.KW	NM	0.95	0.00%	0.38	0.072	0.000	8.8	0.082	0.028	109.3%	353,670	25,486	58.2%	NM
▲ A'ayan Real Estate Co.	AYRE.KW	NM	0.69	0.00%	0.59	0.098	0.001	40.7	0.116	0.057	69.0%	1,952,970	191,004	120.3%	NM
▲ Aqar Real Estate Investment Co.	AQAR.KW	NM	0.88	0.00%	NA	0.094	0.002	23.0	0.098	0.058	58.8%	5,497,323	511,592	90.1%	NM
▼ Kuwait Real Estate Holding Co.	ALAQ.KW	11.2	0.99	0.00%	0.52	0.054	(0.000)	10.3	0.059	0.024	115.6%	780,110	41,550	55.9%	8.9%
▲ MAZAYA Holding Co.	MAZA.KW	NM	0.87	0.00%	0.99	0.082	0.000	56.5	0.122	0.056	43.5%	14,998,579	1,228,140	378.0%	NM
▲ Tijara Real Estate & Investment Co.	TIJA.KW	50.5	0.64	0.00%	0.31	0.068	0.002	25.1	0.069	0.042	61.4%	7,927,996	532,002	201.1%	1.3%
▲ Al TAMEER Real Estate Investment Co.	AMAR.KW	23.7	0.72	0.00%	0.97	0.046	0.005	10.9	0.045	0.018	128.0%	16,606,776	739,999	223.4%	3.0%
▲ Arkan Al-Kuwait Real Estate Co. *	ARKK.KW	20.9	1.03	2.88%	0.24	0.139	0.002	34.9	0.143	0.086	63.9%	22,663	3,090	13.2%	5.0%
▲ Al-Argan International Real Estate Co.	ARGK.KW	NM	0.38	0.00%	0.38	0.112	0.002	29.7	0.123	0.091	1.8%	235,306	25,922	1.2%	NM
▼ Munshaat Real Estate Projects Co.	MUNS.KW	NM	2.49	0.00%	0.63	0.070	(0.004)	22.6	0.121	0.045	(0.3%)	743,612	52,249	10.1%	NM
▼ First Dubai For Real Estate Development	FIRST.KW	NM	1.08	0.00%	1.44	0.080	(0.001)	80.2	0.083	0.040	95.6%	1,854,718	148,864	46.4%	1.2%
▲ Kuwait Business Town Real Estate Co.	KBTk.KW	NM	0.91	0.00%	1.09	0.095	0.000	57.3	0.104	0.038	139.5%	3,041,178	288,782	89.3%	NM
= Real Estate Asset Management Co.	REAM.KW	NM	0.69	0.00%	0.09	0.090	0.000	9.9	0.000	0.000	0.0%	0	0	0.0%	NM
▼ MENA Real Estate Co. *	MENK.KW	NM	0.78	0.00%	0.98	0.091	(0.001)	12.4	0.105	0.027	225.5%	17,391,814	1,595,668	481.3%	NM
= Al Mudon International Real Estate Co.	ALMK.KW	NM	0.17	0.00%	0.83	0.021	0.000	2.1	0.027	0.019	14.4%	0	0	110.8%	NM
▲ Real Estate Trade Centers Co.	MARA.KW	NM	0.69	0.00%	0.39	0.113	0.001	17.0	0.117	0.027	309.4%	452,989	50,412	26.5%	NM
▼ Kuwait Remal Real Estate Co.	REMA.KW	NM	0.72	0.00%	0.87	0.019	(0.001)	5.7	0.028	0.016	(7.9%)	9,050,668	171,895	73.5%	NM
▲ Mashaer Holding Co.	MASHAER.KW	NM	0.87	0.00%	0.53	0.082	0.002	14.7	0.083	0.056	40.1%	3,435,666	277,767	46.2%	NM
= Ajwan Gulf Real Estate Co.	AJWN.KW	NM	0.35	0.00%	0.56	0.011	0.000	2.2	0.000	0.000	0.0%	0	0	0.0%	NM
▲ Al Masaken Intl. Real Estate Dev. Co.	MASKN.KW	NM	0.79	0.00%	0.16	0.052	0.004	5.2	0.050	0.025	108.5%	15,319,618	750,782	490.5%	NM
▼ Dalqan Real Estate Co.	DALQ.KW	NM	1.98	0.00%	NA	0.267	(0.004)	13.2	0.300	0.198	(2.6%)	200,820	53,762	43.8%	0.6%
▼ Dar Al Thuraya Real Estate Co.	THURY.KW	28.9	0.88	0.00%	NA	0.096	(0.000)	14.0	0.128	0.046	51.1%	20,001	1,861	3.9%	3.0%
▲ Osos Holding Group Co.	OSOS.KW	15.2	1.14	5.60%	0.28	0.125	0.002	13.1	0.131	0.083	38.9%	476,656	59,263	61.4%	7.5%
▲ KFH Capital REIT	BAITAKREIT.KW	NA	NA	1.55%	NA	1.194	0.002	28.2	1.197	1.018	16.9%	27,000	32,326	12.9%	NA
▲ Land United Real Estate Co.	LAND.KW	NM	1.01	0.00%	NA	0.120	0.002	18.0	0.200	0.095	(7.0%)	740,056	87,954	37.3%	NM
Real Estate		NM	1.12	0.95%				3,029.9			47.6%	182,735,021	14,950,067		NM

Boursa Kuwait Daily Bulletin

Tuesday, November 2, 2021

Company	Reuters Ticker	Valuation Multiples				Price (KWD)		MKT Cap (KWD Mn.)	52 Weeks High (KWD)	52 Weeks Low (KWD)	YTD-21 Return #	Daily Trading Data		YTD-21 Capital Turnover	ROE
		Trailing P/E (X)	Trailing P/BV (X)	Dividend Yield	Beta	Closing	DTD Change					Volume (Shrs.)	Value (KWD)		
▲ Kuwait Investment Co.	KINV.KW	6.6	1.40	0.00%	0.75	0.304	0.003	167.6	0.305	0.119	149.2%	4,865,513	1,473,817	63.7%	21.3%
▲ Commercial Facilities Co.	FACI.KW	5.7	0.72	4.55%	0.53	0.208	0.001	111.6	0.210	0.168	9.5%	383,640	79,707	11.8%	12.6%
▲ Int'l Financial Advisors Co.	IFIN.KW	1.6	1.18	0.00%	1.26	0.123	0.007	32.8	0.145	0.059	105.7%	7,518,872	892,153	553.7%	75.6%
▲ National Investment Co.	NINV.KW	8.6	1.11	4.19%	1.25	0.239	0.002	209.4	0.244	0.128	77.0%	6,022,238	1,452,591	48.7%	12.8%
= Kuwait Projects Co.(Holding)	KPRO.KW	NM	1.40	3.39%	0.59	0.145	0.000	290.0	0.170	0.140	(8.8%)	1,516,162	177,030	15.4%	0.3%
▲ Coast Invest. & Development Co.	COAS.KW	NM	1.19	0.00%	1.30	0.122	0.002	56.7	0.127	0.050	151.5%	2,703,171	324,514	145.9%	NM
▲ The Securities House Co.	SECH.KW	NM	1.09	0.00%	1.14	0.110	0.002	49.5	0.117	0.052	158.2%	10,807,942	1,179,796	374.0%	NM
▲ Arzan Financial Group For Fin. & Invest.	ARZA.KW	51.9	1.26	0.00%	1.02	0.169	0.002	135.7	0.183	0.055	202.9%	7,305,245	1,225,680	304.9%	2.4%
▲ Kuwait Financial Centre	MARKZ.KW	5.3	0.98	0.00%	0.79	0.206	0.004	99.0	0.205	0.080	147.0%	5,105,365	1,045,178	104.3%	18.5%
▼ Kuwait & M.E. Financial Inv. Co.	KMEF.KW	11.3	1.13	0.00%	0.58	0.128	(0.010)	28.2	0.198	0.130	4.9%	193,836	25,040	13.4%	10.0%
= First Investment Co.	OLAK.KW	NM	0.85	0.00%	1.05	0.089	0.000	39.6	0.095	0.039	106.3%	11,346,583	1,008,470	701.9%	NM
= Al-Mal Investment Co.	MALK.KW	NM	0.25	0.00%	1.14	0.006	0.000	1.8	0.000	0.000	0.0%	0	0	0.0%	NM
= Gulf Investment House	GIHK.KW	26.4	4.73	0.00%	1.00	0.313	0.000	203.1	0.340	0.076	276.2%	333,238	103,576	76.3%	17.9%
= A'ayan Leasing & Investment Co.	AAYA.KW	4.2	1.41	0.00%	1.25	0.167	0.000	119.2	0.204	0.097	81.7%	5,195,670	866,141	330.5%	34.1%
▲ Bayan Investment Co.	BAYK.KW	NM	0.57	0.00%	0.79	0.059	0.002	23.2	0.065	0.032	41.5%	6,112,116	355,485	163.3%	NM
= Osoul Investment Co.	OSUL.KW	38.8	0.87	0.00%	0.44	0.101	0.000	14.9	0.106	0.061	26.3%	884,000	89,862	34.1%	2.2%
▲ Kuwait Finance & Investment Co.	KFSK.KW	6.6	0.79	0.00%	0.34	0.102	0.002	32.9	0.125	0.042	137.2%	492,730	49,390	55.0%	12.0%
= Kamco Investment Co.	KAMC.KW	6.7	0.88	0.00%	0.44	0.147	0.000	50.3	0.149	0.072	98.9%	2,266,409	331,656	71.9%	13.1%
▲ National International Holding Co.	NIHK.KW	NM	1.03	0.00%	0.66	0.164	0.001	37.3	0.179	0.069	98.1%	824,427	134,155	123.8%	NM
▲ UniCap Investment and Finance	UNICAP.KW	8.0	1.03	0.00%	0.68	0.085	0.003	20.3	0.097	0.036	101.4%	2,765,334	231,360	107.7%	12.8%
▼ Al Madar Finance & Investment Co.	MADR.KW	NM	1.23	0.00%	0.37	0.124	(0.001)	26.5	0.156	0.086	36.1%	202,200	24,824	98.2%	NM
▼ Al-Deera Holding	DEER.KW	NM	1.36	0.00%	1.02	0.188	(0.004)	17.3	0.223	0.018	110.9%	1,203	224	337.9%	0.1%
▲ Al-Safat Investment Co.	ALSAFAT.KW	3.7	1.62	0.00%	NA	0.148	0.002	38.0	0.157	0.120	0.0%	8,189,160	1,220,663	95.0%	43.3%
▲ Al Salam Group Holding Co.	SAGH.KW	NM	0.34	0.00%	1.30	0.032	0.002	8.5	0.034	0.024	25.8%	23,615,935	735,503	290.9%	NM
▲ Ektitab Holding Co.	EKTT.KW	NM	0.49	0.00%	0.97	0.021	0.001	6.6	0.023	0.015	36.4%	4,756,039	96,609	178.3%	NM
= Al Madina For Finance & Investment Co.	MADI.KW	1.8	0.43	0.00%	1.18	0.016	0.000	6.6	0.019	0.015	3.2%	0	0	105.7%	23.8%
= NOOR Financial Investment Co.	NOOR.KW	9.3	1.87	1.70%	1.22	0.363	0.000	145.1	0.379	0.168	113.5%	0	0	36.1%	20.2%
▼ Tamdeen Investment Co.	TAMI.KW	NM	0.56	0.00%	0.34	0.391	(0.004)	134.9	0.414	0.200	26.1%	1,002	392	3.7%	NM
▲ Kuwait Syrian Holding Co.	KSHC.KW	33.1	1.44	0.00%	0.69	0.058	0.000	10.2	0.060	0.025	81.2%	4,232,529	245,294	28.3%	4.3%
▲ Asiya Capital Investment Co.	ASIYA.KW	36.9	0.61	0.00%	0.52	0.055	0.000	43.7	0.057	0.034	48.8%	2,027,050	109,941	59.4%	1.6%
= Gulf North Africa Holding Co.	GNAH.KW	69.4	1.12	0.00%	1.03	0.082	0.000	12.3	0.085	0.057	25.3%	5,010	409	19.6%	1.6%
▼ Alimtiyaz Investment Group	ALIMK.KW	NM	0.79	0.00%	0.98	0.129	(0.005)	146.2	0.142	0.106	15.2%	29,217,513	3,760,269	101.0%	NM
▲ Manazel Holding Co.	MANK.KW	31.1	1.18	0.00%	1.36	0.057	0.001	24.7	0.060	0.031	80.8%	13,992,101	806,411	247.2%	3.8%
▲ National Industries Group	NIND.KW	7.2	1.04	0.00%	1.44	0.279	0.001	398.4	0.279	0.165	58.5%	24,761,155	6,949,602	101.1%	14.5%
▲ Warba Capital Holding Co.	WARBACAP.KW	NM	0.74	0.00%	0.68	0.117	0.002	5.9	0.145	0.045	140.7%	344,216	39,587	125.4%	NM
▲ Arabi Holding Group Co.	AGHC.KW	46.4	1.06	0.00%	0.15	0.186	0.010	32.2	0.195	0.102	(6.1%)	652,982	119,416	68.5%	2.3%
▲ Privatization Holding Co.	KPPC.KW	23.3	0.52	0.00%	0.78	0.067	0.001	40.7	0.069	0.039	66.6%	11,224,743	748,319	217.8%	2.2%
▲ Credit Rating & Collection Co.	TAHS.KW	NM	1.12	0.00%	0.00	0.032	0.004	5.3	0.035	0.020	47.3%	2,742,782	84,348	7.2%	NM
▼ Egypt Kuwait Holding Co.	EKKH.KW	12.9	2.68	0.00%	0.18	0.425	(0.004)	478.9	0.453	0.293	31.7%	239,778	102,116	4.2%	20.7%
▲ GFH Financial Group	GFH.KW	15.9	1.14	2.13%	0.86	0.085	0.005	321.0	0.081	0.047	81.2%	123,515,848	10,321,026	65.9%	7.2%
▼ Inovest	INOV.KW	NM	0.82	0.00%	0.74	0.116	(0.001)	34.9	0.134	0.063	76.8%	1,108,207	128,961	289.0%	NM
= Al Bareeq Holding	BAREEQ.KW	NM	0.61	0.00%	NA	0.037	0.000	27.6	0.102	0.034	(44.1%)	0	0	135.6%	NM
▲ Amar For Finance and Leasing Co.	AMARF.KW	15.6	0.88	0.00%	0.08	0.079	0.002	15.7	0.097	0.039	61.6%	1,710,396	134,078	18.4%	5.6%
▲ Al-Manar Financing & Leasing Co.	ALMANAR.KW	NM	0.79	0.00%	0.53	0.078	0.002	24.1	0.082	0.048	57.3%	1,742,101	138,327	27.6%	NM
▼ Boursa Kuwait Securities Co	BOURSA.KW	15.1	8.05	1.90%	0.74	2.109	(0.102)	423.4	2.432	1.091	91.7%	730,423	1,552,843	43.3%	53.2%
Financial Services		13.5	1.26	0.99%				4,151.9			53.7%	331,654,864	38,364,763		9.3%

Boursa Kuwait Daily Bulletin

Tuesday, November 2, 2021

Company	Reuters Ticker	Valuation Multiples				Price (KWD)		MKT Cap (KWD Mn.)	52 Weeks High (KWD)	52 Weeks Low (KWD)	YTD-21 Return #	Daily Trading Data		YTD-21 Capital Turnover	ROE
		Trailing P/E (X)	Trailing P/BV (X)	Dividend Yield	Beta	Closing	DTD Change					Volume (Shrs.)	Value (KWD)		
= Automated Systems Co.	ASCK.KW	NM	0.92	0.00%	0.17	0.108	0.000	10.8	0.122	0.068	56.3%	0	0	37.7%	NM
Technology		NM	0.92	0.00%				10.8			56.3%	0	0		NM
▲ Shamal Az-Zour Al-Oula Power and Water Co.	AZNOULA.KW	20.8	5.02	5.00%	0.68	0.240	0.003	264.0	0.276	0.220	(13.4%)	3,987,630	950,918	35.9%	24.2%
Utilities		20.8	5.02	5.00%				264.0			(13.4%)	3,987,630	950,918		24.2%
Boursa Kuwait		28.5	1.80	1.59%				42,499.1			28.79%	752,398,550	102,255,578		6.3%

Year-to-Date 2021 Top Movers & Most Active Stocks

YTD Top % Gainers	Close (KWD)	Percent Change	YTD Top % Losers	Close (KWD)	Percent Change
Wethaq Takaful Insurance Co.	0.098	381.4%	Yiaco Medical Co.	0.445	(47.0%)
Al Eid Food Co.	0.301	335.2%	Al Bareeq Holding	0.037	(44.1%)
Real Estate Trade Centers Co.	0.113	309.4%	Al Kout for Industrial Projects Co.	0.449	(33.5%)
Gulf Investment House	0.313	276.2%	National Petroleum Services Co.	0.851	(18.9%)
IFA Hotels & Resorts Co.	0.068	246.2%	Shamal Az-Zour Al-Oula Power and Water Co.	0.240	(13.4%)
YTD Most Active by Volume	Close (KWD)	Volume (Shrs.)	YTD Most Active by Value	Close (KWD)	Value (KWD)
Ahli United Bank - Bahrain	0.294	3,276,119,774	Kuwait Finance House	0.848	973,968,166
First Investment Co.	0.089	3,130,115,467	National Bank of Kuwait	0.987	883,076,300
MAZAYA Holding Co.	0.082	2,601,588,079	Ahli United Bank - Bahrain	0.294	770,966,316
GFH Financial Group	0.085	2,489,121,950	Agility (PWC Logistics)	0.997	565,422,268
Arzan Financial Group For Fin. & Invest.	0.169	2,447,912,179	Gulf Bank	0.250	491,971,652

* Different Fiscal Year Company

Disclaimer & Important Disclosures

Kamco Invest is authorized and fully regulated by the Capital Markets Authority ("CMA, Kuwait") and partially regulated by the Central Bank of Kuwait ("CBK").

This document is provided for informational purposes only. Nothing contained in this document constitutes investment, an offer to invest, legal, tax or other advice or guidance and should be disregarded when considering or making investment decisions. In preparing this document, Kamco Invest did not take into account the investment objectives, financial situation and particular needs of any particular person. Accordingly, before acting on this document, investors should independently evaluate the investments and strategies referred to herein and make their own determination of whether it is appropriate in light of their own financial circumstances and objectives. The entire content of this document is subject to copyright with all rights reserved. This research and the information contained herein may not be reproduced, distributed or transmitted in Kuwait or in any other jurisdiction to any other person or incorporated in any way into another document or other material without our prior written consent.

Analyst Certification

Each of the analysts identified in this report, if any and where applicable, certifies, with respect to the sector, companies or securities that the individual analyses, that (1) the views expressed in this report reflect his or her personal views about all of the subject companies and securities and (2) no part of his or her compensation was, is or will be directly or indirectly dependent on the specific recommendations or views expressed in this report.

Kamco Invest Ratings

Kamco Invest research is based on the analysis of regional and country economics, industries and company fundamentals. Kamco Invest company research reflects a long-term (12-month) target price for a company or stock. The ratings bands are:

* **Outperform:** Target Price represents expected returns >= 10% in the next 12 months

* **Neutral:** Target Price represents expected returns between -10% and +10% in the next 12 months

* **Underperform:** Target Price represents an expected return of <-10% in the next 12 months

In certain circumstances, ratings may differ from those implied by a fair value target using the criteria above. Kamco Invest policy is to maintain up-to-date fair value targets on the companies under its coverage, reflecting any material changes to the analyst's outlook on a company. Share price volatility may cause a stock to move outside the rating range implied by Kamco Invest's fair value target. Analysts may not necessarily change their ratings if this happens, but are expected to disclose the rationale behind their view to Kamco Invest clients.

Any terms and conditions proposed by you which are in addition to or which conflict with this Disclaimer are expressly rejected by Kamco Invest and shall be of no force or effect. The information contained in this document is based on current trade, statistical and other public information we consider reliable. We do not represent or warrant that such information is fair, accurate or complete and it should not be relied upon as such. Kamco Invest has no obligation to update, modify or amend this document or to otherwise notify a recipient thereof in the event that any opinion, forecast or estimate set forth herein, changes or subsequently becomes inaccurate. The publication is provided for informational uses only and is not intended for trading purposes. The information on publications does not give rise to any legally binding obligation and/or agreement, including without limitation any obligation to update such information. You shall be responsible for conducting your own investigation and analysis of the information contained or referred to in this document and of evaluating the merits and risks involved in the securities forming the subject matter of this or other such document. Moreover, the provision of certain data/information in the publication may be subject to the terms and conditions of other agreements to which Kamco Invest is a party.

Nothing in this document should be construed as a solicitation or offer, or recommendation, to acquire or dispose of any investment or to engage in any other transaction, or to provide any investment advice or service. This document is directed at Professional Clients and not Retail Clients within the meaning of CMA rules. Any other persons in receipt of this document must not rely upon or otherwise act upon it. Entities and individuals

*Kamco Investment Company (DIFC) Limited ("Kamco Invest DIFC"), Office 205, Level 2, Gate Village 1, Dubai International Financial Centre, a wholly owned subsidiary of Kamco Investment Company KSC (Public), is regulated by the Dubai Financial Services Authority (DFSA). Kamco Invest DIFC may only undertake the financial services activities that fall within the scope of its existing DFSA licence. The information in this document may be distributed by Kamco Invest DIFC on behalf of Kamco Investment Company KSC (Public). This document is intended for Professional Clients or Market Counterparties only as defined by the DFSA, and no other person should act upon it.

This document may not be distributed in Saudi Arabia except to such persons as are permitted under the Offers of Securities Regulations issued by the Capital Market Authority. The Capital Market Authority does not make any representation as to the accuracy or completeness of this document, and expressly disclaims any liability whatsoever for any loss arising from, or incurred in reliance upon, any part of this document. The recipients of this document hereby should conduct their own due diligence on the accuracy of the information relating to the contents of this document. If you do not understand the contents of this document you should consult an authorized financial advisor.

Risk Warnings

Any prices, valuations or forecasts are indicative and are not intended to predict actual results, which may differ substantially from those reflected. The value of an investment may go up as well as down. The value of and income from any investment may fluctuate from day to day as a result of changes in relevant economic markets (including, without limitation, foreseeable or unforeseeable changes in interest rates, foreign exchange rates, default rates, prepayment rates, political or financial conditions, etc.).

Past performance is not indicative of future results. Any opinions, estimates, valuations or projections (target prices and ratings in particular) are inherently imprecise and a matter of judgment. They are statements of opinion and not of fact, based on current expectations, estimates and projections, and rely on beliefs and assumptions. Actual outcomes and returns may differ materially from what is expressed or forecasted. There are no guarantees of future performance. Certain transactions, including those involving futures, options, and other derivatives, give rise to substantial risk and are not suitable for all investors. This document does not propose to identify or to suggest all of the risks (direct or indirect) which may be associated with the investments and strategies referred to herein.

Conflict of Interest

Kamco Invest and its affiliates provide full investment banking services, and they and their directors, officers and employees, may take positions which conflict with the views expressed in this document. Salespeople, traders, and other professionals of Kamco Invest may provide oral or written market commentary or trading strategies to our clients and our proprietary trading desks that reflect opinions that are contrary to the opinions expressed in this document. Our asset management area, our proprietary trading desks and investing businesses may make investment decisions that are inconsistent with the recommendations or views expressed in this document. Kamco Invest may have or seek investment relationships for which it will receive compensation from the companies that are the subject of this document. Facts and views presented in this document have not been reviewed by, and may not reflect information known to, professionals in other Kamco Invest business areas, including investment banking personnel. United Gulf Bank, Bahrain owns majority of Kamco Invest's shareholding and this ownership may create, or may create the appearance of, conflicts of interest.

No Liability & Warranty

Kamco Invest makes neither implied nor expressed representations or warranties and, to the fullest extent permitted by applicable law, we hereby expressly disclaim any and all express, implied and statutory representations and warranties of any kind, including, without limitation, any warranty as to accuracy, timeliness, completeness, and fitness for a particular purpose and/or non-infringement. Kamco Invest will accept no liability in any event including (without limitation) your reliance on the information contained in this document, any negligence for any damages or loss of any kind, including (without limitation) direct, indirect, incidental, special or consequential damages, expenses or losses arising out of, or in connection with your use or inability to use this document, or in connection with any error, omission, defect, computer virus or system failure, or loss of any profit, goodwill or