

## MENA Markets Daily Report

April 29, 2015

	Country	Benchmark		Index Value	DTD Change	YTD 2015	FY 2014
<b>MENA Countries</b>							
<b>In this Report...</b>	<b>Kuwait</b>	KSE Price Index	▲	6,360.11	0.1%	(2.7%)	(13.4%)
Kuwait ..... 2	Kuwait	KSE Weighted Index	▼	433.72	(0.3%)	(1.2%)	(3.1%)
Saudi Arabia ..... 3	Kuwait	KAMCO TRW Index	▼	2,732.97	(0.2%)	(0.8%)	(1.9%)
UAE - Dubai ..... 4	Saudi Arabia	TADAWUL All Share Index	▲	9,713.07	0.0%	16.6%	(2.4%)
UAE - Abu Dhabi ..... 5	UAE - Dubai	DFM General Index	▲	4,182.04	0.7%	10.8%	12.0%
Qatar ..... 6	UAE - Abu Dhabi	ADX General Index	▼	4,673.18	(0.0%)	3.2%	5.6%
Bahrain ..... 7	Qatar	QE 20 Index	▲	12,209.54	0.1%	(0.6%)	18.4%
Oman ..... 8	Bahrain	Bahrain All Share	▼	1,389.63	(0.2%)	(2.6%)	14.2%
Egypt ..... 9	Oman	MSM 30 Index	▼	6,323.16	(0.1%)	(0.3%)	(7.2%)
Jordan ..... 10	Egypt	EGX 30	▼	8,330.52	(1.9%)	(6.7%)	31.6%
Tunisia ..... 11	Jordan	ASE Index	▼	2,120.28	(0.7%)	(2.1%)	4.8%
Lebanon ..... 12	Lebanon	KAMCO Beirut SE TRW Index	▼	1,124.50	(0.1%)	2.9%	3.5%
Morocco ..... 13	Tunisia	Tunisia Index	▲	5,523.73	0.4%	8.5%	16.2%
Syria ..... 14	Morocco	MASI	▼	9,920.50	(0.2%)	3.1%	5.6%
	Syria	DSE Weighted Index	▼	1,206.43	(0.1%)	(5.1%)	1.7%
<b>Emerging Markets</b>							
	China	SSE Composite Index	▼	4,476.21	(1.1%)	38.6%	52.9%
	Russia	RUSSIAN RTS INDEX (\$)	▲	1,029.71	0.7%	30.2%	(45.2%)
	India	SENSEX	▲	27,396.38	0.8%	(1.0%)	29.9%
	Brazil	BOVESPA Stock Index	▲	55,812.03	0.5%	11.6%	(2.9%)
	Mexico	BOLSA Index	▼	45,338.36	(0.4%)	5.1%	1.0%
	Korea	KOSPI Index	▼	2,147.67	(0.5%)	11.9%	(4.8%)
	Taiwan	TAIEX Index	▼	9,956.83	(0.2%)	5.9%	8.1%
<b>Global Markets</b>							
	World	MSCI World Index	▲	1,803.39	0.1%	5.5%	2.9%
	Asia	MSCI Asia Pacific	▲	157.27	0.4%	14.1%	(2.5%)
	Europe	DJ Stoxx 600	▼	406.28	(1.5%)	18.6%	4.4%
	Europe	FTSEurofirst 300	▼	1,618.26	(1.5%)	18.2%	4.0%
	Emerging Markets	MSCI EM Index	▲	1,067.01	0.1%	11.6%	(4.6%)
	U.S.A	S&P 500	▲	2,114.76	0.3%	2.7%	11.4%
	U.S.A	DJIA	▲	18,110.14	0.4%	1.6%	7.5%
	U.S.A	NASDAQ Composite	▼	5,055.42	(0.1%)	6.7%	13.4%
	UK	FTSE 100	▼	7,030.53	(1.0%)	7.1%	(2.7%)
	Germany	DAX	▼	11,811.66	(1.9%)	20.5%	2.7%
	Japan	NIKKEI 225	▲	20,058.95	0.4%	14.9%	7.1%
	Hong Kong	HANG SENG INDEX	▲	28,442.75	0.0%	20.1%	1.3%
<b>Commodities</b>							
	Oil	OPEC Crude	▲	61.06	0.2%	17.4%	(49.6%)
	Oil	Brent	▼	64.64	(0.3%)	5.3%	(45.6%)
	Oil	Kuwait	▼	59.50	(0.3%)	13.0%	(51.7%)
	Natural Gas	NYMEX Natural Gas (USD/MMBtu)	▲	2.54	0.9%	(14.7%)	(33.8%)
	Gold	Gold Spot \$/Oz	▲	1,212.95	0.5%	1.8%	(1.4%)

Source: Bloomberg & KAMCO Research

Investment Research Department  
Kamcoird@kamconline.com

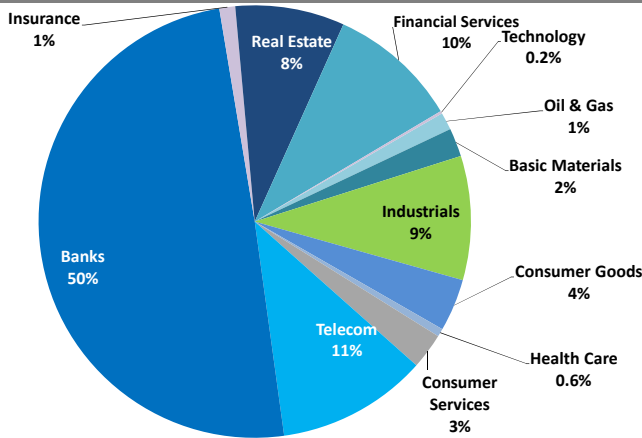
P.O.Box 28873, Safat 13149 Kuwait  
Tel: (965) 1852626, Extn: 1153 / 1146  
Fax: (965) 22492395

<http://www.kamconline.com>

KAMCO Investment Company - K.S.C  
(Public)

## Kuwait Market Daily Report

### Sector Weight by Market Cap



### Top 10 Companies by Market Capitalization

Company Name	Market Cap. (Mn KWD)	P/E (X)	ROE* (%)
1- National Bank of Kuwait	4,283.8	16.4	10.4%
2- Kuwait Finance House	3,192.6	25.2	7.2%
3- Zain	2,117.5	10.9	12.0%
4- Ahli United Bank - Bahrain	1,386.8	10.1	13.9%
5- Kuwait Food Co. (Americana)	1,061.3	20.4	14.3%
6- Kuwait Projects Co.	957.8	20.8	8.9%
7- Burgan Bank	922.2	14.9	9.3%
8- Commercial Bank of Kuwait	917.8	18.7	8.9%
9- Boubyan Bank	897.5	31.8	9.5%
10- Agility	888.7	17.5	5.7%
<b>Total</b>	<b>16,626</b>	<b>16.49</b>	<b>9.9%</b>

\*: ROE is calculated based on FY2014 net profit & shareholders' equity as of 31-December-14

### Top Movers and Most Active Stocks

Today's Top % Gainers	Close (KWD)	Change (KWD)	Percent Change
Kuwait Gypsum Manufacturing & Trading Co.	0.120	0.010	9.1%
Kuwait Cable Vision	0.032	0.003	8.5%
Yiac Medical Co.	0.126	0.008	6.8%
Gulf Franchising Co.	0.081	0.005	6.6%
Heavy Engineering Ind. & Shipbuilding Co.	0.132	0.008	6.5%

Today's Top % Losers	Close (KWD)	Change (KWD)	Percent Change
Al Qurain Holding Co.	0.015	(0.002)	(12.1%)
ACICO Industries Co.	0.305	(0.025)	(7.6%)
Kuwait Financial Center	0.110	(0.008)	(6.8%)
Future Communications Global Co.	0.116	(0.008)	(6.5%)
Future Kid Entertainment and Real Estate Co.	0.080	(0.005)	(5.9%)

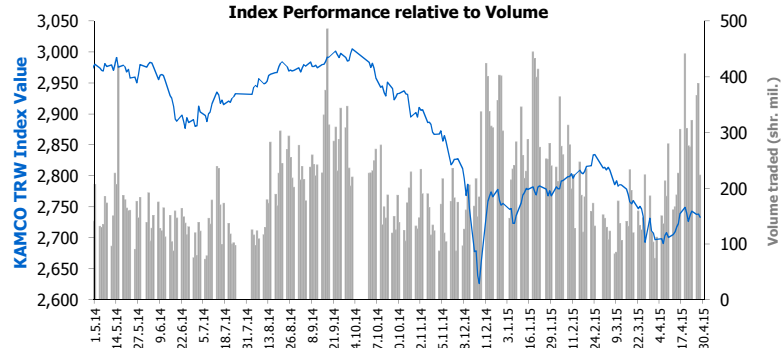
Today's Most Active by Volume	Close (KWD)	Change (KWD)	Volume (Shares)
Gulf Finance House	0.060	0.003	32,409,415
Investors Holding Group Co.	0.036	0.000	21,746,536
Al-Madina for Finance & Investment Co.	0.049	0.001	19,053,486
Ithmar Bank B.S.C	0.049	0.001	12,551,295
Boubyan International Industries Holding Co.	0.054	(0.002)	10,808,865

Source: KAMCO Research

### Market Capitalization - Sectors' Return

	Market Cap. (KWD Mn)	DTD %	DTD % Chg	MTD % Chg	YTD % Chg
<b>Kuwaiti Stock Exchange</b>	<b>29,333.7</b>	<b>▼</b>	<b>(0.3%)</b>	<b>3.2%</b>	<b>(1.3%)</b>
Oil & Gas	382.4	▲	0.3%	3.3%	(2.3%)
Basic Materials	626.1	▼	(1.5%)	2.6%	(3.5%)
Industrials	2,720.3	▼	(0.8%)	(1.4%)	(0.3%)
Consumer Goods	1,145.8	▲	0.0%	(2.2%)	(5.9%)
Health Care	176.8	▲	0.8%	2.3%	(3.8%)
Consumer Services	788.0	▼	(0.0%)	(3.3%)	1.3%
Telecommunications	3,301.0	▼	(0.1%)	2.4%	(1.4%)
Banks	14,535.9	▼	(0.6%)	5.5%	(0.4%)
Insurance	348.7	=	0.0%	(3.0%)	(2.3%)
Real Estate	2,394.2	▲	0.8%	3.3%	0.1%
Financial Services	2,859.7	▲	0.6%	1.7%	(5.1%)
Technology	54.6	▼	(1.2%)	(0.6%)	(3.0%)

Market Breadth	▲	51	▼	40	=	102
Benchmark Return	Closing Value	DTD Chg	DTD % Chg	MTD % Chg	YTD % Chg	
KAMCO TRWI	2,732.97	(5.3)	(0.2%)	0.9%	(0.8%)	
KSE Price Index	6,360.11	3.5	0.1%	1.2%	(2.7%)	
KSE Weighted Index	433.72	(1.2)	(0.3%)	1.5%	(1.2%)	
Kuwait 15 Index	1,050.34	(4.6)	(0.4%)	2.8%	(0.9%)	
Market Cap (KWD Mn)	29,334	(84.4)	(0.3%)	3.2%	(1.3%)	



### Market Trading Data and Volatility

Trading Indicators	Today's Value	DTD Chg	DTD % Chg	Average Daily YTD 2015	YTD 2014
Volume (Shrs Mn)	223.4	(164.4)	(42.4%)	218.1	273.0
Value Traded (KWD Mn)	17.3	(6.3)	(26.7%)	21.3	31.2
No. of Trades	4,928	(1,321.0)	(21.1%)	5,049	5,685

Market Volatility**	Volatility Since January:				
	2014	2013	2012	2011	2010
KAMCO TRW Index	7.0%	6.3%	6.0%	7.0%	7.7%
KSE Price Index	10.1%	10.9%	10.1%	9.8%	9.7%
KSE Weighted Index	10.3%	9.2%	8.8%	10.0%	10.8%

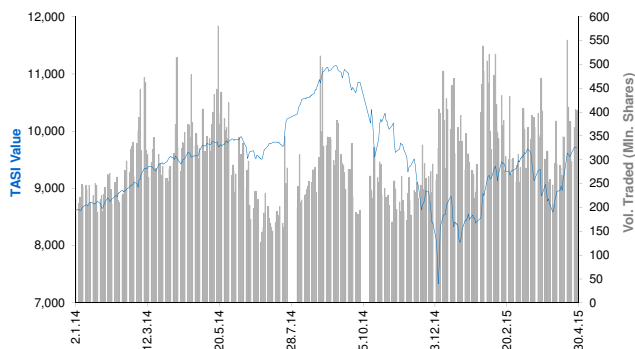
\*\* Annualized Standard Deviation of Daily Returns

Today's Most Active by Value	Close (KWD)	Change (KWD)	Value (KWD)
Gulf Finance House	0.060	0.003	1,900,056
Al-Madina for Finance & Investment Co.	0.049	0.001	915,426
kuwait Telecommunication Co.	0.900	0.010	863,240
Mabane Co.	0.960	0.020	843,996
Investors Holding Group Co.	0.036	0.000	783,980

## Saudi Tadawul Daily Report

April 29, 2015

### Index Performance relative to Volume



### Top 10 Stocks by Market Capitalization

	Market Cap. (SAR Mn)	P/E (X)	ROE* (%)
1- Saudi Basic Industries Corp	306,480	13.1	11.0%
2- National Commercial Bank	138,480	16.0	18.4%
3- Saudi Telecom	136,100	12.4	18.1%
4- Al-Rajhi Bank	101,384	14.8	16.3%
5- Saudi Electricity Co.	80,832	22.4	6.1%
6- Kingdom Holding Co.	75,378	NM	2.7%
7- Jabal Omar Development Company	74,445	NM	NM
8- Samba Financial Group	59,000	11.8	12.9%
9- AL-Marai Co.	54,696	32.7	14.4%
10- SABBB	54,600	12.8	16.4%

Subtotal	1,081,394	16.55	12.1%
----------	-----------	-------	-------

\* ROE is based on FY2014 Net Profit & Shareholders' Equity as of 31-December-14

### Today's Top Movers and Most Active Stocks

Best Return Performers	Price (SAR)	Daily Return	Value (SAR 000's)
Trade Union Cooperative Ins. Co.	44.10	9.8%	77,102
Arabia Ins. Cooperative Co.	16.73	9.8%	57,567
Saudi Transport & Investment Co.	52.64	9.3%	180,511
Saudi Printing & Packing Co.	23.07	7.3%	31,500
Al-Rajhi Co. for Cooperative Ins.	29.26	4.7%	75,171

Worst Return Performers	Price (SAR)	Daily Return	Value (SAR 000's)
SALAMA Cooperative Insurance Company	29.66	(3.5%)	18,773
Saudi Indian Co. for Cooperative Ins.	22.66	(3.2%)	69,187
Saudi Industrial Investment Group	28.66	(3.1%)	71,120
Saudi Arabia Refineries Co.	61.93	(2.6%)	17,341
Takween Advanced Industries	69.62	(2.4%)	31,986

Most Active Stocks By Volume	Price (SAR)	Daily Return	Volume ('000 Shrs)
Dar Al Arkan Real Estate Dev. Co.	9.54	1.3%	87,472
Alinma Bank	24.34	0.5%	43,259
Emaar The Economic City	15.41	(1.2%)	16,327
Knowledge Economic City	29.78	3.1%	15,938
Saudi Kayan	11.85	(0.2%)	15,446

Source: KAMCO Research

### Sectors' Return & Valuation Multiples

	Market Cap. (SAR Mn)	MTD Return	P/E (X)	P/BV (X)	Yield (%)
Saudi Stock Exchange	2,125,012	10.9%	18.9	2.1	2.8%
Banks & Financial	598,846	10.7%	14.4	2.1	1.7%
Petrochemical Industries	503,016	18.1%	14.6	1.6	4.7%
Cement	92,712	4.4%	15.0	3.0	5.9%
Retail	95,434	5.6%	34.7	6.8	1.5%
Energy & Utilities	83,227	10.8%	22.1	1.4	3.7%
Agric. & Food Ind.	132,964	7.4%	26.8	4.5	1.8%
Telecom	172,747	6.5%	20.9	2.0	4.7%
Insurance	53,907	10.8%	63.0	2.6	0.1%
Multi-Inv.	83,198	1.0%	72.9	2.1	2.4%
Indust. Inv.	80,788	15.1%	27.8	1.8	1.2%
Bldg. & Const.	28,643	2.9%	43.8	2.5	2.3%
Real Estate Dev.	141,209	9.3%	50.1	2.6	0.6%
Transport	23,226	16.2%	27.3	2.2	2.0%
Media & Publishing	4,279	13.5%	NM	1.7	0.0%
Hotel & Tourism	30,816	10.7%	21.6	5.6	2.4%

Sectors' MTD Return is based on the Change in market cap. and it might not conform with the benchmark return for each sector

### Market Return, Volatility & Trading Indicators

Market Return	Closing Value	DTD Chg	DTD % Chg	MTD % Chg	YTD-15 % Chg
Tadawul All Share Index	9,713.07	2.1	0.0%	10.6%	16.6%
Market Cap (SAR Mn)	2,125,012	1,148.3	0.1%	10.9%	17.0%

Benchmark Volatility**	Since Jan-14	Since Jan-13	Since Jan-12	Since Jan-11	Since Jan-10
Tadawul All Share Index	20.7%	17.2%	16.0%	17.0%	16.7%

\*\* Annualized Standard Deviation of Daily Returns

Trading Indicators	Today's Value	DTD Chg	DTD % Chg	Average Daily YTD-15	YTD-14
Volume (Mn Shares)	404	(2)	(0.5%)	348	288
Value Traded (SAR Mn)	10,675	85	0.8%	8,973	8,147
No. of Trades	153,782	(9,046)	(5.6%)	150,503	135,872

Market Breadth	▲	63	▼	95	=	9
----------------	---	----	---	----	---	---

### YTD-2015 Top Movers and Most Active Stocks

YTD-15 Best Return Performers	Price (SAR)	YTD Val (SAR Mn)	YTD Vol ('000 Shrs)	YTD-15 Return
Arabia Ins. Cooperative Co.	16.73	1,322	75,088	104.3%
Saudi United Cooperative Ins. Co.	17.82	2,258	98,010	98.8%
The Co for Cooperative Ins.	95.12	5,706	74,930	90.5%
Allied Cooperative Ins. Group	38.36	3,325	116,220	89.7%
Buruj Cooperative Insurance Co.	31.50	2,468	55,562	81.9%

YTD-15 Worst Return Performers	Price (SAR)	YTD Val (SAR Mn)	YTD Vol ('000 Shrs)	YTD-15 Return
Middle East Specialised Cables	15.30	9,847	508,647	(30.1%)
Solidarity Saudi Takaful co.	16.82	5,803	282,341	(17.0%)
Saudi Ceramic Co.	87.93	2,411	22,188	(16.5%)
Al-Ethad Etisalat Co.	37.21	30,961	776,522	(15.8%)
Al Khaleej Training & Education Co.	55.66	1,325	20,696	(14.2%)

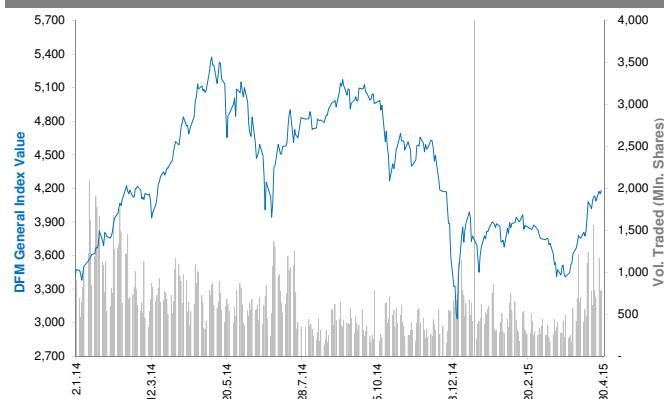
YTD-15 Most Active Stocks by Volume	Price (SAR)	YTD Val (SAR Mn)	YTD Vol ('000 Shrs)	YTD-15 Return
Dar Al Arkan Real Estate Dev. Co.	9.54	47,068	5,002,529	16.6%
Alinma Bank	24.34	66,749	2,980,284	20.0%
Saudi Kayan	11.85	19,127	1,535,462	8.7%
ZAIN KSA	11.74	13,238	1,522,505	(2.0%)
Saudi Arabian Mining Co.	44.70	37,089	954,632	46.6%

YTD-15 Return: Is a total return which accounts in addition to the change in price the cash & share dividends announced during the year.

## Dubai Financial Market Daily Report

April 29, 2015

### Index Performance relative to Volume



### Top 10 Stocks by Market Capitalization

	Market Cap (AED Mn)	P/E (X)	ROE* (%)
1- EMAAR Properties	58,137	15.8	11.2%
2- Emirates NBD	55,578	10.8	11.0%
3- EMAAR MALLS GROUP	41,646	30.8	9.8%
4- Dubai Islamic Bank	27,320	10.3	17.1%
5- Emirates Integrated Telecom. (DU)	23,360	11.1	26.9%
6- Mashreq Bank	20,289	8.4	14.9%
7- Dubai Financial Market	18,756	22.2	9.0%
8- DAMAC Properties Dubai	16,400	5.1	71.6%
9- Commercial Bank of Dubai	14,350	11.9	15.4%
10- Dubai Investment	12,108	9.0	13.3%
<b>Subtotal</b>	<b>306,542</b>	<b>12.43</b>	<b>14.1%</b>

\* ROE is based on FY2014 Net Profit & Shareholders' Equity as of 31-December-14

### Today's Top Movers and Most Active Stocks

Best Return Performers	Price (AED)	Daily Return	Value Traded (AED)
Gulf Finance House	0.772	8.1%	274,142,207
Dubai Investment	2.990	4.2%	118,277,939
Deyaar Development	0.910	3.6%	66,577,298
Ektitab Holding Co.	0.569	3.5%	21,966
Al-Madina for Finance & Investment	0.603	3.1%	10,501,172

Worst Return Performers	Price (AED)	Daily Return	Value Traded (AED)
Ajman Bank	2.310	(4.1%)	62,814,191
Marka	1.230	(3.1%)	138,243
Aramex	3.400	(3.1%)	1,490,653
Dubai Islamic Ins.& Reins Co.(AMAN)	0.675	(2.9%)	441,967
SHUAA Capital	0.765	(1.9%)	60,269

Most Active Stocks by Volume	Price (AED)	Daily Return	Volume Traded ('000 Shrs)
Gulf Finance House	0.772	8.1%	369,311
Deyaar Development	0.910	3.6%	74,340
Dubai Investment	2.990	4.2%	40,067
EMAAR MALLS GROUP	3.200	2.9%	37,296
Union Properties	1.510	1.3%	33,164

Source: KAMCO Research

### Sectors' Return & Valuation Multiples

	Market Cap. (AED Mn)	MTD % Chg	P/E (X)	P/BV (X)	Yield (%)
<b>Dubai Financial Market</b>	<b>383,109</b>	<b>15.7%</b>	<b>13.1</b>	<b>1.5</b>	<b>1.9%</b>
<b>Banking</b>	<b>133,749</b>	<b>9.8%</b>	<b>10.9</b>	<b>1.3</b>	<b>2.4%</b>
<b>Consumer Staples</b>	<b>9,476</b>	<b>9.1%</b>	<b>NM</b>	<b>1.2</b>	<b>0.6%</b>
<b>Investment &amp; Financial</b>	<b>33,019</b>	<b>36.0%</b>	<b>17.1</b>	<b>1.4</b>	<b>2.0%</b>
<b>Insurance</b>	<b>6,085</b>	<b>1.7%</b>	<b>7.1</b>	<b>0.6</b>	<b>2.2%</b>
<b>Industrial</b>	<b>4,615</b>	<b>7.6%</b>	<b>19.9</b>	<b>0.6</b>	<b>1.9%</b>
<b>Real Estate &amp; Construction</b>	<b>142,535</b>	<b>24.2%</b>	<b>NM</b>	<b>2.0</b>	<b>0.6%</b>
<b>Telecommunication</b>	<b>23,658</b>	<b>4.4%</b>	<b>11.7</b>	<b>2.7</b>	<b>6.0%</b>
<b>Transportation</b>	<b>26,856</b>	<b>2.9%</b>	<b>17.7</b>	<b>1.4</b>	<b>3.3%</b>
<b>Services</b>	<b>3,119</b>	<b>14.0%</b>	<b>2.6</b>	<b>0.6</b>	<b>1.1%</b>

Sectors' MTD Return is based on the Change in market cap. and it might not conform with the benchmark return for each sector

<b>Market Breadth</b>	<b>17</b>	<b>10</b>	<b>=</b>	<b>33</b>
-----------------------	-----------	-----------	----------	-----------

### Market Return, Volatility & Trading Indicators

Market Return	Closing Value	DTD Chg	DTD % Chg	MTD % Chg	YTD-15 % Chg
<b>DFM General Index</b>	<b>4,182.04</b>	<b>30.11</b>	<b>0.7%</b>	<b>19.0%</b>	<b>10.8%</b>
<b>Market Cap (AED Mn)</b>	<b>383,109</b>	<b>2,342</b>	<b>0.6%</b>	<b>15.7%</b>	<b>14.3%</b>

Benchmark Volatility**	Volatility Since:				
	Jan-2014	Jan-2013	Jan-2012	Jan-2011	Jan-2010
<b>DFM General Index</b>	<b>35.6%</b>	<b>30.5%</b>	<b>27.2%</b>	<b>25.4%</b>	<b>24.6%</b>

\*\* Annualized Standard Deviation of Daily Returns

Trading Indicators	Today's Value	DTD Chg	DTD % Chg	Average Daily YTD-15	YTD-14
<b>Volume (Mn Shares)</b>	<b>780</b>	<b>9.6</b>	<b>1.2%</b>	<b>473</b>	<b>910</b>
<b>Value Traded (AED Mn)</b>	<b>1,082</b>	<b>12.5</b>	<b>1.2%</b>	<b>723</b>	<b>1,864</b>
<b>No. of Trades</b>	<b>8,471</b>	<b>(1,497)</b>	<b>(15.0%)</b>	<b>7,155</b>	<b>10,761</b>

### YTD-2015 Top Movers and Most Active Stocks

YTD-15 Best Return Performers	Price (AED)	Value Traded (AED '000)	Volume ('000 Shrs)	YTD-15 Return
<b>Takaful Emarat</b>	<b>1.700</b>	<b>157,232</b>	<b>126,871</b>	<b>112.5%</b>
<b>Al-Madina for Finance &amp; Investment</b>	<b>0.603</b>	<b>120,301</b>	<b>246,446</b>	<b>67.0%</b>
<b>Al Salam Bank - Bahrain</b>	<b>1.360</b>	<b>753,541</b>	<b>586,287</b>	<b>43.8%</b>
<b>Gulf General Investment Co.</b>	<b>1.040</b>	<b>866,105</b>	<b>1,013,863</b>	<b>40.5%</b>
<b>Dubai Parks And Resorts</b>	<b>0.985</b>	<b>1,805,473</b>	<b>2,127,088</b>	<b>34.9%</b>

YTD-15 Worst Return Performers	Price (AED)	Value Traded (AED '000)	Volume ('000 Shrs)	YTD-15 Return
<b>Int'l Financial Advisors Co.</b>	<b>0.430</b>	<b>2,059</b>	<b>3,994</b>	<b>(49.4%)</b>
<b>Gulf Navigation Holding</b>	<b>0.305</b>	<b>177,026</b>	<b>559,203</b>	<b>(22.2%)</b>
<b>National General Insurance</b>	<b>3.310</b>	<b>74</b>	<b>21</b>	<b>(17.3%)</b>
<b>Ajman Bank</b>	<b>2.310</b>	<b>191,429</b>	<b>80,277</b>	<b>(13.4%)</b>
<b>Dubai National Insurance &amp; Reinsurance</b>	<b>3.200</b>	<b>3,059</b>	<b>970</b>	<b>(8.6%)</b>

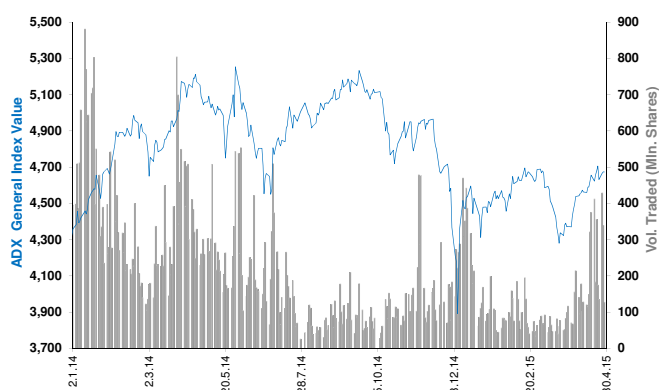
YTD-15 Most Active Stocks by Volume	Price (AED)	Value Traded (AED '000)	Volume ('000 Shrs)	YTD-15 Return
<b>Gulf Finance House</b>	<b>0.772</b>	<b>3,925,891</b>	<b>11,846,847</b>	<b>3.3%</b>
<b>Union Properties</b>	<b>1.510</b>	<b>4,675,051</b>	<b>3,830,650</b>	<b>24.8%</b>
<b>Arabtec Holding P.J.S.C.</b>	<b>2.970</b>	<b>9,382,142</b>	<b>3,220,069</b>	<b>1.4%</b>
<b>Deyaar Development</b>	<b>0.910</b>	<b>2,509,935</b>	<b>3,100,637</b>	<b>7.1%</b>
<b>DAMAC Properties Dubai</b>	<b>3.280</b>	<b>7,424,964</b>	<b>2,689,168</b>	<b>17.6%</b>

YTD-15 Return: Is a total return which accounts in addition to the change in price the cash & share dividends announced during the year.

## Abu Dhabi Securities Exchange Daily Report

April 29, 2015

### Index Performance relative to Volume



### Top 10 Stocks by Market Capitalization

	Market Cap. (AED Mn)	P/E (X)	ROE* (%)
1- Emirates Telecom. Co.	98,273	11.1	21.0%
2- First Gulf Bank	68,850	12.2	16.6%
3- National Bank Of Abu Dhabi	56,360	10.1	14.7%
4- Abu Dhabi Commercial Bank	41,911	10.3	15.3%
5- AL DAR Properties Co.	21,701	9.7	12.4%
6- Union National Bank	18,820	9.4	11.9%
7- Abu Dhabi Islamic Bank	15,151	8.7	12.8%
8- National Bank of Ras Al-Khaimah	13,410	9.2	20.4%
9- United Arab Bank	6,875	11.4	20.8%
10- National Bank of Fujairah	5,929	11.7	15.0%
<b>Subtotal</b>	<b>347,279</b>	<b>10.61</b>	<b>16.1%</b>

\* ROE is based on FY2014 Net Profit & Shareholders' Equity as of 31-December-14

### Today's Top Movers and Most Active Stocks

Best Return Performers	Price (AED)	Daily Return	Value (AED)
Invest Bank	2.75	3.8%	462,028
FOODCO Holding Co.	3.60	2.9%	3,600
Sudan Telecom. Co.	0.77	2.7%	353,099
Union National Bank	6.84	2.5%	20,648,410
AGTHIA Group	7.23	1.8%	1,444,923

Worst Return Performers	Price (AED)	Daily Return	Value (AED)
Al Khaleej Investment Co.	2.70	(10.0%)	1,663
International Fish Farming Co.	5.93	(9.9%)	5,930
National Corp for Tourism & Hotels	6.03	(9.9%)	73,023
Al Dhafra Insurance Co.	4.80	(8.9%)	20,160
Bank Of Sharjah	1.61	(4.7%)	4,529

Most Active Stocks by Volume	Price (AED)	Daily Return	Volume ('000 Shrs)
Eshraq Properties Co.	1.05	(4.5%)	50,861
Dana Gas	0.51	0.0%	25,082
Ras Al Khaimah Properties	0.75	0.0%	19,330
AL DAR Properties Co.	2.76	(0.4%)	17,520
Union National Bank	6.84	2.5%	3,061

Source: KAMCO Research

### Sectors' Return & Valuation Multiples

	Market Cap. (AED Mn)	MTD % Chg	P/E (X)	P/BV (X)	Dividend Yield (%)
ADX	454,134	2.6%	8.5	1.4	4.3%
Banks	247,834	5.2%	10.7	1.5	3.8%
Inv. & Financial Services	5,183	(9.2%)	0.3	1.1	3.7%
Real Estate	25,642	20.3%	13.8	1.1	3.1%
Energy	8,035	5.4%	NM	0.6	7.7%
Consumer Staples	5,597	0.4%	65.9	1.9	1.1%
Industrial	12,975	3.3%	17.5	0.9	3.6%
Insurance	9,177	(0.6%)	NM	1.0	4.3%
Telecommunication	129,730	(4.1%)	11.6	1.9	5.5%
Services	9,961	0.5%	15.4	0.6	3.8%

Sectors' MTD Return is based on the Change in market cap. and it might not conform with the benchmark return for each sector

Market Breadth	▲ 10 ▼ 9 = 46
----------------	---------------

### Market Return, Volatility & Trading Indicators

Market Return	Closing Value	DTD Chg	DTD % Chg	MTD % Chg	YTD-15 % Chg
ADX General Index	4,673.18	(0.98)	(0.0%)	4.6%	3.2%
Market Cap (AED Mn)	454,134	328	0.1%	2.6%	(2.1%)

Benchmark Volatility**	Volatility Since:				
	Jan-2014	Jan-2013	Jan-2012	Jan-2011	Jan-2010
ADX General Index	20.5%	15.9%	13.5%	12.7%	12.1%

\*\* Annualized Standard Deviation of Daily Returns

Trading Indicators	Today's Value	DTD Chg	DTD % Chg	Average Daily YTD-15	YTD-14
Volume (Mn Shares)	127	(212.1)	(62.5%)	115	360.2
Value Traded (AED Mn)	223	(214.5)	(49.0%)	247	890.4
No. of Trades	2,002	(1412)	(41.4%)	1,933	4,445

### YTD-2015 Top Movers and Most Active Stocks

YTD-15 Best Return Performers	Price (AED)	YTD-Val ('000 AED)	Volume ('000 Shrs)	YTD-15 Return
Eshraq Properties Co.	1.05	3,321,688	3,809,400	32.9%
Ras Al Khaimah Ceramic Co.	3.84	232,883	64,064	28.0%
National Corp for Tourism & Hotels	6.03	2,188	362	21.3%
Union National Bank	6.84	612,587	104,869	17.9%
AGTHIA Group	7.23	153,026	22,062	16.6%

YTD-15 Worst Return Performers	Price (AED)	YTD-Val ('000 AED)	Volume ('000 Shrs)	YTD-15 Return
Al Dhafra Insurance Co.	4.80	351	61	(37.7%)
Abu Dhabi National Hotels	2.50	1,771	645	(37.5%)
Ooredoo	95.50	2,231	18	(33.4%)
National Takaful Co. (Watania)	0.75	1,392	1,789	(27.9%)
National Bank of Umm Al-Qaiwain	3.00	12,656	4,212	(20.0%)

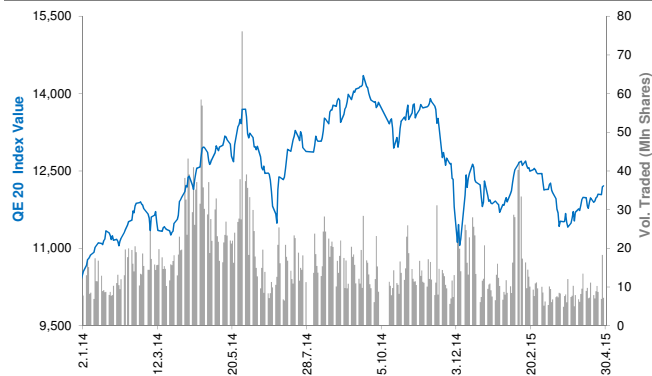
YTD-15 Most Active Stocks by Volume	Price (AED)	YTD-Val ('000 AED)	Volume ('000 Shrs)	YTD-15 Return
Eshraq Properties Co.	1.05	3,321,688	3,809,400	32.9%
AL DAR Properties Co.	2.76	4,626,845	1,782,185	4.2%
Ras Al Khaimah Properties	0.75	821,347	1,111,782	1.4%
Dana Gas	0.51	465,027	991,519	2.0%
Waha Capital Co.	2.59	1,300,769	449,180	(8.2%)

YTD-15 Return: Is a total return which accounts in addition to the change in price the cash & share dividends announced during the year.

## Qatar Exchange Daily Report

April 29, 2015

### Index Performance relative to Volume



### Sectors' Return & Valuation Multiples

	Market Cap. (QAR Mn)	MTD % Chg	P/E (X)	P/B (X)	Yield (%)
<b>Qatar Exchange</b>	<b>653,864</b>	<b>3.3%</b>	<b>15.3</b>	<b>2.1</b>	<b>3.5%</b>
<b>Banking &amp; Finance</b>	<b>262,600</b>	<b>2.4%</b>	<b>13.5</b>	<b>2.1</b>	<b>3.7%</b>
<b>Goods &amp; Consumer Services</b>	<b>29,120</b>	<b>4.5%</b>	<b>15.6</b>	<b>2.3</b>	<b>2.8%</b>
<b>Industrial</b>	<b>190,667</b>	<b>3.5%</b>	<b>18.6</b>	<b>3.1</b>	<b>4.4%</b>
<b>Insurance</b>	<b>22,225</b>	<b>(0.1%)</b>	<b>10.4</b>	<b>1.7</b>	<b>2.0%</b>
<b>Real Estate</b>	<b>75,169</b>	<b>10.2%</b>	<b>15.2</b>	<b>1.3</b>	<b>1.5%</b>
<b>Telecom</b>	<b>46,379</b>	<b>(1.3%)</b>	<b>23.4</b>	<b>1.6</b>	<b>2.8%</b>
<b>Transport</b>	<b>27,703</b>	<b>3.6%</b>	<b>13.3</b>	<b>1.5</b>	<b>3.8%</b>

Sectors' MTD Return is based on the Change in market cap. and it might not conform with the benchmark return for each sector

### Market Breadth

▲ 16 ▼ 19 = 8

### Top 10 Stocks by Market Capitalization

	Market Cap. (QAR Mn)	P/E (X)	ROE* (%)
1- Qatar National Bank	137,147	13.1	18.3%
2- Industries Qatar	87,967	13.9	18.9%
3- Ezdan Holding Group Co.	45,331	33.3	4.5%
4- Masraf Al Rayan	37,350	18.7	17.6%
5- Mesaieed Petrochemical Holding Co.	32,853	18.3	12.4%
6- Ooredoo (formerly Q-Tel)	31,712	14.9	9.1%
7- Qatar Islamic Bank	24,126	15.1	12.8%
8- Qatar Electricity & Water Co.	23,364	15.3	22.6%
9- Barwa Real Estate Co.	19,806	7.1	17.6%
10- Commercial Bank of Qatar	18,520	9.8	12.5%

<b>Subtotal</b>	<b>458,175</b>	<b>12.95</b>	<b>16.8%</b>
-----------------	----------------	--------------	--------------

\* ROE is based on FY2014 Net Profit & Shareholders' Equity as of 31-December-14

### Today's Top Movers and Most Active Stocks

Best Return Performers	Price (QAR)	Daily Return	Value (QAR)
Qatar Insurance Co.	80.50	2.0%	15,454,643
Qatar Navigation	101.00	1.5%	22,526,598
Widam(Qatar Meat & Livestock Co.)	62.50	1.1%	5,619,334
Mannai Corporation	112.20	1.1%	4,459,003
Aamal Co.	16.87	1.0%	4,473,296

Worst Return Performers	Price (QAR)	Daily Return	Value (QAR)
Doha Insurance Co.	25.55	(1.7%)	110,172
Qatari German Co. for Medical Devices	13.70	(1.2%)	2,182,123
Medicare Group	169.60	(1.2%)	902,525
Zad Holding Co.	90.00	(1.1%)	270,000
Qatar Oman Investment Co.	15.85	(0.9%)	5,231,442

Most Active Stocks by Volume	Price (QAR)	Daily Return	Volume (Shares)
Barwa Real Estate Co.	50.90	(0.2%)	1,523,612
Salam International Investment	14.21	(0.8%)	858,411
Ezdan Holding Group Co.	17.09	(0.5%)	534,790
Vodafone Qatar	17.35	(0.3%)	454,038
Masraf Al Rayan	49.80	1.0%	407,753

Source: KAMCO Research

### Market Return, Volatility & Trading Indicators

Market Return	Closing Value	DTD Chg	DTD % Chg	MTD % Chg	YTD-15 % Chg
QE 20 Index	12,209.54	17.33	0.1%	4.3%	(0.6%)
Market Cap (QAR Mn)	653,864	326	0.0%	3.3%	(3.4%)

Benchmark Volatility**	QE 20 Volatility Since:				
	Jan-2014	Jan-2013	Jan-2012	Jan-2011	Jan-2010
QE 20 Index	17.2%	16.5%	14.2%	14.3%	14.4%

\*\* Annualized Standard Deviation of Daily Returns

Trading Indicators	Today's Value	DTD Chg	DTD % Chg	Average Daily YTD-15	YTD-14
--------------------	------------------	------------	--------------	-------------------------	--------

Volume ('000 Shares)	7,215	(11,083)	(60.6%)	11,161	19,042
Value Traded (QAR Mn)	327	(393)	(54.6%)	474	784
No. of Trades	4,543	(3,077)	(40.4%)	5,830	8,728

### YTD-2015 Top Movers and Most Active Stocks

YTD-15 Best Return Performers	Price (QAR)	YTD Value (QAR 000's)	YTD Volume (Shares 000's)	YTD-15 Return
Medicare Group	169.60	490,545	3,443	45.0%
Qatari German Co. for Medical Devices	13.70	201,447	16,589	35.0%
Doha Insurance Co.	25.55	35,034	1,291	30.9%
Gulf Warehousing Co.	72.00	236,445	3,988	27.7%
Barwa Real Estate Co.	50.90	4,826,961	104,943	21.5%

YTD-15 Worst Return Performers	Price (QAR)	YTD Value (QAR 000's)	YTD Volume (Shares 000's)	YTD-15 Return
Ooredoo	99.00	752,493	6,859	(20.1%)
Industries Qatar	145.40	3,099,295	20,916	(13.5%)
Diala Brokerage & Inv. Hldg. Co.	29.20	504,323	12,086	(12.7%)
Mesaieed Petrochemical Holding Co.	26.15	626,692	22,559	(11.4%)
Gulf International Services	86.60	3,515,670.6	37,085.57	(10.8%)

YTD-15 Most Active Stocks by Vol.	Price (QAR)	YTD Value (QAR 000's)	YTD Volume (Shares 000's)	YTD-15 Return
Vodafone Qatar	17.35	2,586,604	147,965	5.5%
Ezdan Holding Group Co.	17.09	1,859,438	113,690	14.5%
Barwa Real Estate Co.	50.90	4,826,961	104,943	21.5%
Mazaya Qatar R.E Development Co.	19.66	1,129,951	57,288	7.8%
Masraf Al Rayan	49.80	1,900,495	40,731	12.7%

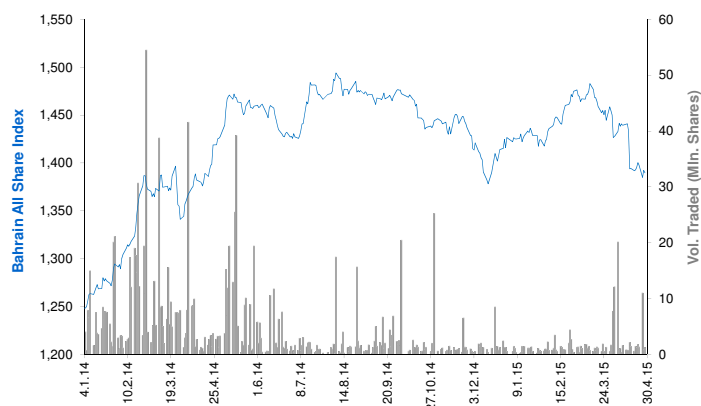
YTD-15 Return: Is a total return which accounts in addition to the change in price the cash & share dividends announced during the year.



## Bahrain Bourse Daily Report

April 29, 2015

### Index Performance relative to Volume



### Sectors' Return & Valuation Multiples

	Market Cap. (BHD Mn)	MTD % Chg	P/E (X)	P/B (X)	Yield (%)
<b>Bahrain Bourse</b>	<b>7,910</b>	<b>(2.8%)</b>	<b>10.0</b>	<b>1.0</b>	<b>3.6%</b>
<b>Commercial Banks</b>	<b>3,497</b>	<b>(0.3%)</b>	<b>11.2</b>	<b>1.4</b>	<b>4.1%</b>
<b>Investment</b>	<b>2,202</b>	<b>(10.6%)</b>	<b>8.9</b>	<b>0.7</b>	<b>0.9%</b>
<b>Insurance</b>	<b>172</b>	<b>(5.3%)</b>	<b>12.6</b>	<b>0.9</b>	<b>2.4%</b>
<b>Service</b>	<b>1,094</b>	<b>3.4%</b>	<b>11.0</b>	<b>1.1</b>	<b>5.3%</b>
<b>Hotel &amp; Tourism</b>	<b>214</b>	<b>0.8%</b>	<b>12.0</b>	<b>0.9</b>	<b>4.0%</b>
<b>Industrial</b>	<b>731</b>	<b>2.0%</b>	<b>7.5</b>	<b>0.8</b>	<b>7.1%</b>

Sectors' MTD Return is based on the Change in market cap. and it might not conform with the benchmark return for each sector

### Market Breadth

▲ 4 ▼ 3 = 33

### Top 10 Stocks by Market Capitalization

	Market Cap. (BHD Mn)	P/E (X)	ROE* (%)
1- Ahli United Bank (Price in USD)	1,652	9.08	14.2%
2- National Bank of Bahrain	875	16.37	14.1%
3- Arab Banking Corp. (Price in USD)	821	6.85	7.9%
4- Aluminum Bahrain	710	7.36	10.5%
5- Bahrain Telecommunications Co.	575	11.66	9.3%
6- Bank of Bahrain and Kuwait	480	9.59	14.0%
7- United Gulf Bank	325	45.83	4.1%
8- Al Salam Bank	295	19.00	4.9%
9- Al Baraka Banking (Price in USD)	286	5.00	11.3%
10- ITHMAR Bank (Price in USD)	183	NM	NM
<b>Subtotal</b>	<b>6,203</b>	<b>9.92</b>	<b>10.1%</b>

\* ROE is based on FY2014 Net Profit & Shareholders' Equity as of 31-December-14

### Today's Top Movers and Most Active Stocks

Best Return Performers	Price (BHD)	Daily Return	Value (BHD)
<b>TRAFCO</b>	<b>0.220</b>	<b>7.8%</b>	6,600
<b>ITHMAR Bank (USD)</b>	<b>0.160</b>	<b>3.2%</b>	4,826
<b>AlKhaleeji Commercial Bank</b>	<b>0.055</b>	<b>1.9%</b>	21,048
<b>Bahrain Duty Free Complex</b>	<b>0.835</b>	<b>0.6%</b>	9,183

Worst Return Performers	Price (BHD)	Daily Return	Value (BHD)
<b>Al Salam Bank</b>	<b>0.138</b>	<b>(3.5%)</b>	72,633
<b>Nass Corporation</b>	<b>0.177</b>	<b>(1.1%)</b>	1,967
<b>Ahli United Bank (USD)</b>	<b>0.730</b>	<b>(0.7%)</b>	22,017

Most Active Stocks by Volume	Price (BHD)	Daily Return	Volume (Shares)
<b>Al Salam Bank</b>	<b>0.138</b>	<b>(3.5%)</b>	<b>525,562</b>
<b>AlKhaleeji Commercial Bank</b>	<b>0.055</b>	<b>1.9%</b>	<b>387,708</b>
<b>Ahli United Bank (USD)</b>	<b>0.730</b>	<b>(0.7%)</b>	<b>80,000</b>
<b>ITHMAR Bank (USD)</b>	<b>0.160</b>	<b>3.2%</b>	<b>80,000</b>
<b>TRAFCO</b>	<b>0.220</b>	<b>7.8%</b>	<b>30,000</b>

Source: KAMCO Research

### Market Return, Volatility & Trading Indicators

Market Return	Closing Value	DTD Chg	DTD % Chg	MTD % Chg	YTD-15 % Chg
<b>Bahrain All Share Index</b>	<b>1,389.63</b>	<b>(2.51)</b>	<b>(0.2%)</b>	<b>(4.2%)</b>	<b>(2.6%)</b>
<b>Market Cap (BHD Mln)</b>	<b>7,910.21</b>	<b>(7.89)</b>	<b>(0.1%)</b>	<b>(2.8%)</b>	<b>(2.3%)</b>

### Benchmark Volatility\*\*

	Jan-2014	Jan-2013	Jan-2012	Jan-2011	Jan-2010
<b>Bahrain All Share Index</b>	<b>7.62%</b>	<b>7.2%</b>	<b>6.8%</b>	<b>7.3%</b>	<b>7.8%</b>

\*\* Annualized Standard Deviation of Daily Returns

Trading Indicators	Today's Value	DTD Chg	DTD % Chg	Average Daily YTD-15	YTD-14
<b>Volume ('000 Shares)</b>	<b>1,193</b>	<b>398</b>	<b>50.1%</b>	<b>1,656</b>	<b>7,258</b>
<b>Value Traded (BHD '000)</b>	<b>164</b>	<b>22</b>	<b>15.1%</b>	<b>386</b>	<b>1,637</b>
<b>No. of Trades</b>	<b>54</b>	<b>(8.0)</b>	<b>(12.9%)</b>	<b>45</b>	<b>101</b>

### YTD-2015 Top Movers and Most Active Stocks

YTD-15 Best Return Performers	Price (BHD)	YTD-Val (BHD '000)	YTD Vol (Shares)	YTD-15 Return
<b>Al Salam Bank</b>	<b>0.138</b>	2,025	15,827,958	<b>37.0%</b>
<b>AlKhaleeji Commercial Bank</b>	<b>0.055</b>	931	18,483,398	<b>27.9%</b>
<b>Al-Ahli Insurance Co.</b>	<b>0.334</b>	41	130,367	<b>23.7%</b>
<b>Bahrain Cinema Co.</b>	<b>1.620</b>	4,277	2,646,650	<b>21.9%</b>
<b>BANADER Co. For Hotels</b>	<b>0.068</b>	16	247,000	<b>21.4%</b>

YTD-15 Worst Return Performers	Price (BHD)	YTD-Val (BHD '000)	YTD Vol (Shares)	YTD-15 Return
<b>Gulf Finance House (USD)</b>	<b>0.070</b>	8	283,267	<b>(61.4%)</b>
<b>Takaful International Co.</b>	<b>0.100</b>	2,500.3	26,042,807	<b>(31.0%)</b>
<b>United Gulf Investment Corporation</b>	<b>0.100</b>	9	92,311	<b>(24.8%)</b>
<b>Bank of Bahrain and Kuwait</b>	<b>0.444</b>	3,529	7,756,304	<b>(14.1%)</b>
<b>Al Baraka Banking Group (USD)</b>	<b>0.680</b>	330	1,236,916	<b>(13.8%)</b>

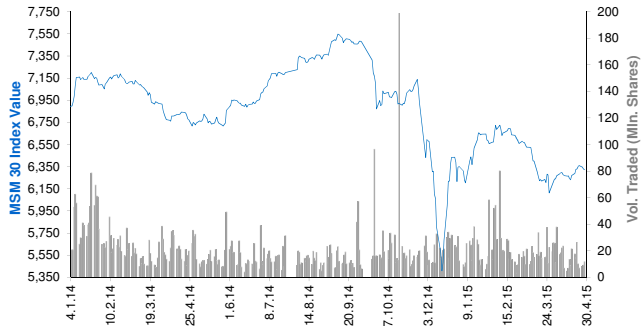
YTD-15 Most Active Stocks by Volume	Price (BHD)	YTD-Val (BHD '000)	YTD Vol (Shares)	YTD-15 Return
<b>Ahli United Bank (USD)</b>	<b>0.730</b>	9,370	31,432,430	<b>(1.6%)</b>
<b>Takaful International Co.</b>	<b>0.100</b>	2,500	26,042,807	<b>(31.0%)</b>
<b>AlKhaleeji Commercial Bank</b>	<b>0.055</b>	931	18,483,398	<b>27.9%</b>
<b>Al Salam Bank</b>	<b>0.138</b>	2,025	15,827,958	<b>37.0%</b>
<b>ITHMAR Bank (USD)</b>	<b>0.160</b>	606	10,055,914	<b>0.0%</b>

YTD-15 Return: Is a total return which accounts in addition to the change in price the cash & share dividends announced during the year.

## Muscat Securities Market Daily Report

April 29, 2015

### Index Performance relative to Volume



### Sectors' Return & Valuation Multiples

	Market Cap. (OMR Mn)	MTD % Chg	P/E (X)	P/B (X)	Yield (%)
Muscat Securities Mkt	7,621	0.7%	10.10	1.42	3.9%
Financial	3,592	1.4%	9.05	1.08	3.9%
Industrial	1,241	1.6%	12.97	1.59	3.7%
Services	2,788	(0.7%)	10.65	2.22	4.0%

Sectors' MTD Return is based on the Change in market cap. and it might not conform with the benchmark return for each sector

Market Breadth	▲	2	▼	13	=	38
----------------	---	---	---	----	---	----

### Top 10 Stocks by Market Capitalization

	Market Cap. (OMR Mn)	P/E (X)	ROE* (%)
1- Bank Muscat	1,215	7.44	12.4%
2- Oman Telecom Co.	1,211	9.90	21.5%
3- Ooredoo	482	12.71	19.7%
4- Bank Dhofar	439	10.84	12.4%
5- National Bank of Oman	418	8.32	13.9%
6- Raysut Cement	320	11.67	19.3%
7- Ahli Bank	301	11.98	14.9%
8- HSBC Bank Oman	270	22.13	3.9%
9- Bank Sohar	222	7.43	15.6%
10- Shell Oman Marketing	198	16.10	36.3%
Subtotal	5,255	9.75	14.6%

\* ROE is based on FY2014 Net Profit & Shareholders' Equity as of 31-December-14

### Today's Top Movers and Most Active Stocks

Best Return Performers	Price (OMR)	Daily Return	Value (OMR)
Oman Cement Co.	0.516	2.8%	95,870
United Finance	0.124	0.8%	10,020

Worst Return Performers	Price (OMR)	Daily Return	Value (OMR)
Al Sharqia Inv. Holding	0.145	(3.3%)	8,640
Oman United Insurance	0.310	(2.5%)	47,090
ONIC. Holding	0.458	(2.1%)	91,670
Al Jazeera Services Co.	0.340	(1.7%)	3,410
Gulf Investment Services	0.144	(1.4%)	66,170

Most Active Stocks by Volume	Price (OMR)	Daily Return	Volume (Shares)
Bank Muscat	0.530	0.0%	5,085,980
Al Anwar Holding	0.260	(0.8%)	2,117,292
HSBC Bank Oman	0.135	0.0%	1,091,425
Oman Telecom Co.	1.615	(0.6%)	685,794
Gulf Investment Services	0.144	(1.4%)	460,000

Source: KAMCO Research

### Market Return, Volatility & Trading Indicators

Market Return	Closing Value	DTD Chg	DTD % Chg	MTD % Chg	YTD-15 % Chg
MSM 30 Index	6,323.16	(7.36)	(0.1%)	1.4%	(0.3%)
Market Cap (OMR Mn)	7,620.68	(9.86)	(0.1%)	0.7%	(1.5%)

Benchmark Volatility**	Volatility Since:				
	Jan-2014	Jan-2013	Jan-2012	Jan-2011	Jan-2010
MSM 30 Index	14.9%	12.5%	11.3%	11.5%	11.0%

\*\* Annualized Standard Deviation of Daily Returns

Trading Indicators	Today's Value	DTD Chg	DTD % Chg	Average Daily YTD-15	YTD-14
Volume ('000 Shares)	11,851	2,594	28.0%	19,119	27,313
Value Traded (OMR '000)	5,473	1,339	31.8%	5,699	9,665
No. of Trades	620	184	42.2%	1,109	1,506

### YTD-2015 Top Movers and Most Active Stocks

YTD-15 Best Return Performers	Price (OMR)	YTD-Value (OMR 000's)	YTD Vol. (Shares 000's)	YTD-15 Return
Gulf International Chemicals	0.229	9,015	38,610	50.7%
ONIC. Holding	0.458	6,372	15,876	44.9%
Al Anwar Holding	0.260	102,997	399,250	36.1%
United Power	1.740	110	57	31.3%
Ooredoo	0.740	19,156	26,890	17.8%

YTD-15 Worst Return Performers	Price (OMR)	YTD-Value (OMR 000's)	YTD Volume (Shares 000's)	YTD-15 Return
Port Services Corporation	0.227	377	1,252	(35.9%)
Renaissance Services	0.376	10,066	22,949	(20.7%)
National Gas Co.	0.404	1,919	3,895	(19.4%)
Galfar Engineering	0.130	10,239	63,242	(19.3%)
Al Jazeera Steel Products Co.	0.279	1,864	5,509	(17.0%)

YTD-15 Most Active Stocks by Volume	Price (OMR)	YTD-Value (OMR 000's)	YTD Volume (Shares 000's)	YTD-15 Return
Al Anwar Holding	0.260	102,997	399,250	36.1%
Gulf Investment Services	0.144	28,666	174,231	1.4%
Bank Muscat	0.530	69,410	123,061	(4.4%)
Oman & Emirates Investment	0.116	15,808	118,934	(5.7%)
Global Financial Investment Co.	0.117	12,787	111,384	(4.1%)

YTD-15 Return: Is a total return which accounts in addition to the change in price the cash & share dividends announced during the year.

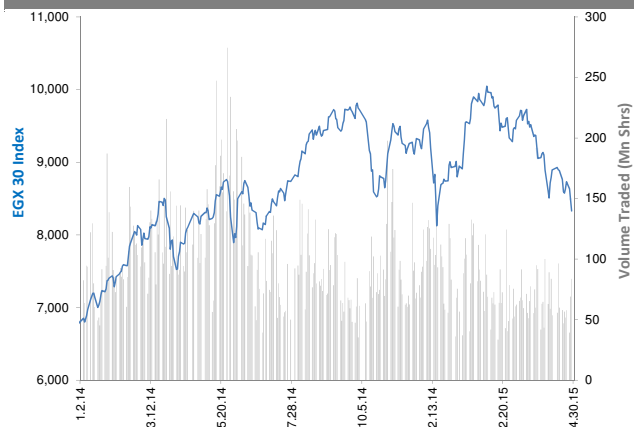


## The Egyptian Exchange Daily Report

(The bulletin covers the top 60 companies by Mkt. Cap out of 336 listed companies)

April 29, 2015

### Index Performance relative to Volume



### Top 10 Stocks by Market Capitalization

	Market Cap. (EGP Mn)	P/E (X)	ROE* (%)
1-Orascom Construction Industries (OCI)	59,382	NM	NM
2-Commercial Int'l Bank (Egypt)	48,769	16.2	25.1%
3-T M G Holding	19,604	33.5	2.3%
4-Qatar National Bank AIAhli	18,052	10.2	17.7%
5-Telecom Egypt	16,644	5.6	10.5%
6-ABU Qir Fertilizers & Chemical ind. Co.	13,460	9.6	43.3%
7-MobiNil	12,301	NM	NM
8-Elswedey Cables	10,277	NM	2.0%
9-EASTERN CO	9,750	12.9	16.9%
10-Egyptian Financial Group-Hermes Co.	7,799	NM	NM
<b>Subtotal</b>	<b>156,657</b>	<b>16.34</b>	<b>8.7%</b>

\*: ROE is based on Net Profit for the Period FY-13 & Shareholders' Equity as of 31-December-13

### Today's Top Movers and Most Active Stocks

Best Return Performers	Last Price (EGP)	Daily Return
Al Ezz Dekheila Steel Co. Alexandria	479.97	9.1%
Orascom Hotels & Development	11.40	5.5%
ABU Qir Fertilizers & Chemical ind. Co.	160.00	5.3%
Egyptian Financial & Industrial	7.94	2.5%
Suez Cement Co.	39.90	2.3%

Worst Return Performers	Last Price (EGP)	Daily Return
Delta Sugar Co.	11.61	(8.6%)
National Bank of Kuwait - Egypt - NBK	20.10	(6.3%)
Aluminium Co. of Egypt	13.41	(4.9%)
Housing and Development Bank	21.00	(4.8%)
National CementCo. - Egypt	9.56	(4.4%)

Most Active Stocks By Volume	Last Price (EGP)	Volume ('000 Shrs)
Amer Group Holding	0.93	21,424
Citadel Capital	2.21	12,978
Palm Hills Developments	2.50	12,049
Global Telecom Hldg. (Orascom Telecom)	3.17	7,918
Upper Egypt Contracting	1.11	4,269

Source: KAMCO Research

### Sectors' Return & Valuation Multiples

	Market Cap. (EGP Mn)	MTD % Chg	P/E (X)	P/BV (X)	Yield (%)
The Egyptian Exchange	351,924	(6.9%)	21.1	1.5	4.0%
Banking & Finance	76,474	(1.9%)	11.8	2.5	2.4%
Basic Resources	17,681	(7.1%)	NM	1.5	4.5%
Chemical	21,781	(0.8%)	7.8	3.1	8.7%
Construction & Material	79,287	(7.3%)	11.3	0.8	5.8%
Financial Services	20,427	(15.8%)	NM	1.0	0.9%
Food & Beverage	8,203	(5.2%)	15.7	2.3	3.5%
Healthcare & Pharma.	6,347	(2.4%)	20.3	3.4	3.8%
Ind. Goods,Services, Auto.	12,423	(6.1%)	46.2	1.7	2.4%
Media	546	(11.9%)	17.4	0.3	0.0%
Oil & Gas	3,961	(8.6%)	4.8	1.4	19.6%
Personal & Household	15,716	(7.3%)	15.2	1.4	3.3%
Real Estate	39,158	(12.3%)	45.4	1.2	0.3%
Telecommunication	45,574	(8.7%)	NM	1.6	7.8%
Travel & Leisure	4,348	(9.7%)	NM	1.2	0.0%

Sectors' MTD Return is based on the Change in market cap. and it might not conform with the benchmark return for each sector

### Market Return, Volatility & Trading Indicators

Market Return	Closing Value	DTD Chg	DTD % Chg	MTD % Chg	YTD-15 % Chg
EGX 30 Index	8,330.52	(163.16)	(1.9%)	(8.8%)	(6.7%)
Market Cap (EGP Mn)	351,924	(544)	(0.2%)	(6.9%)	(9.2%)

Benchmark Volatility**	Since Jan-14	Since Jan-13	Since Jan-12	Since Jan-11	Since Jan-10
EGX 30 Index	21%	21%	24%	25%	26%

\*\*: Annualized Standard Deviation of Daily Returns

Trading Indicators	Today's Value	DTD Chg	DTD % Chg	Average Daily YTD-15	YTD-14
Volume (Mn Shares)	84	14.64	21.2%	71	141
Value Traded (EGP Mn)	354	28.9	8.9%	398	574
No. of Trades	10,680	(725)	(6.4%)	12,230	17,648

Market Breadth	▲ 15	▼ 33	= 12
----------------	------	------	------

### YTD-2015 Top Movers and Most Active Stocks

YTD-15 Best Return Performers	Last Price (EGP)	Volume ('000 Shrs)	YTD-15 Return
Qatar National Bank AIAhli	37.00	1,384	19.4%
Misr Cement Co.	81.80	225	14.6%
Suez Cement Co.	39.90	2,140	11.6%
Elswedey Cables	46.00	13,886	10.8%
Commercial Int'l Bank (Egypt)	53.70	115,069	9.4%

YTD-15 Worst Return Performers	Last Price (EGP)	Volume ('000 Shrs)	YTD-15 Return
GB AUTO S.A.E	4.55	15,858	(85.3%)
Asec Company for Mining - Ascom	6.90	2,955	(41.5%)
Orascom Hotels & Development	11.40	12,545	(41.3%)
Palm Hills Developments	2.50	451,126	(39.2%)
El Ahli Investment and Development	7.29	3,565	(32.6%)

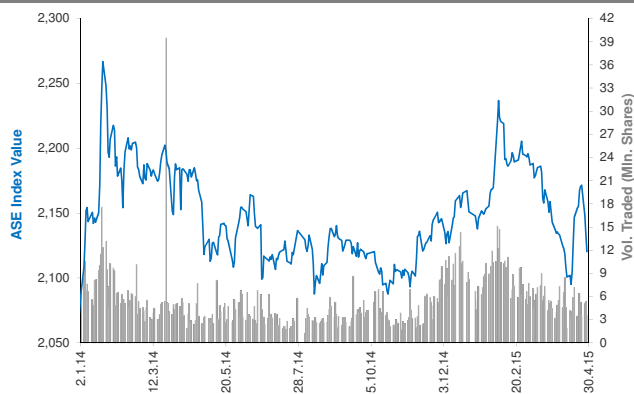
YTD-15 Most Active Stocks by Volume	Last Price (EGP)	Volume ('000 Shrs)	YTD-15 Return
Amer Group Holding	0.93	1,547,867	(27.34%)
Citadel Capital	2.21	745,898	(23.00%)
Global Telecom Hldg. (Orascom Telecom)	3.17	573,433	(20.15%)
Egyptian Resorts Co.	0.92	526,414	(24.59%)
Palm Hills Developments	2.50	451,126	(39.17%)

YTD-15 Return: Is a total return which accounts in addition to the change in price the cash & share dividends announced during the year.

## Amman Stock Exchange Daily Report (1st Market)

April 29, 2015

### Index Performance relative to Volume



### Sectors' Return & Valuation Multiples

	Market Cap. (JD Mn)	MTD % Chg	P/E (X)	P/BV (X)	Yield (%)
<b>Amman Stock Exchange</b>	<b>13,197</b>	<b>(1.3%)</b>	<b>14.2</b>	<b>0.9</b>	<b>3.9%</b>
<b>Banks</b>	<b>9,111</b>	<b>0.0%</b>	<b>10.2</b>	<b>0.8</b>	<b>3.7%</b>
<b>Insurance</b>	<b>94</b>	<b>(1.6%)</b>	<b>NM</b>	<b>0.9</b>	<b>3.3%</b>
<b>Diversified Financial Services</b>	<b>188</b>	<b>(2.1%)</b>	<b>NM</b>	<b>0.5</b>	<b>0.9%</b>
<b>Real Estate</b>	<b>284</b>	<b>(4.7%)</b>	<b>74.6</b>	<b>0.7</b>	<b>0.5%</b>
<b>Educational Services</b>	<b>310</b>	<b>(6.2%)</b>	<b>11.7</b>	<b>2.0</b>	<b>4.4%</b>
<b>Hotels and Tourism</b>	<b>141</b>	<b>(3.7%)</b>	<b>24.2</b>	<b>0.7</b>	<b>4.0%</b>
<b>Transportation</b>	<b>101</b>	<b>(0.8%)</b>	<b>31.4</b>	<b>0.9</b>	<b>2.5%</b>
<b>Technology &amp; Commun.</b>	<b>744</b>	<b>(7.2%)</b>	<b>14.9</b>	<b>2.0</b>	<b>11.1%</b>
<b>Media</b>	<b>16</b>	<b>18.9%</b>	<b>NM</b>	<b>0.4</b>	<b>0.0%</b>
<b>Utilities &amp; Energy</b>	<b>698</b>	<b>3.1%</b>	<b>33.2</b>	<b>3.0</b>	<b>2.6%</b>
<b>Pharmaceutical &amp; Medical Ind.</b>	<b>110</b>	<b>14.2%</b>	<b>60.1</b>	<b>1.2</b>	<b>0.0%</b>
<b>Tobacco &amp; Cigarettes</b>	<b>365</b>	<b>13.6%</b>	<b>11.6</b>	<b>3.3</b>	<b>6.3%</b>
<b>Mining &amp; Extraction Industries</b>	<b>625</b>	<b>0.5%</b>	<b>NM</b>	<b>0.7</b>	<b>3.4%</b>
<b>Engineering &amp; Construction</b>	<b>103</b>	<b>(3.5%)</b>	<b>36.1</b>	<b>1.5</b>	<b>1.3%</b>
<b>Textiles , Leather &amp; Cloth.</b>	<b>78</b>	<b>(4.1%)</b>	<b>16.3</b>	<b>0.9</b>	<b>5.2%</b>

Sectors' MTD Return is based on the Change in market cap. and it might not conform with the benchmark return for each sector

### Top 10 Stocks by Market Capitalization

	Market Cap. (JD Mn)	P/E (X)	ROE* (%)
<b>1-ARAB BANK</b>	<b>3,554</b>	<b>7.2</b>	<b>6.5%</b>
<b>2-HOUSING BK TRD FIN</b>	<b>2,318</b>	<b>23.2</b>	<b>10.3%</b>
<b>3-JORDAN TELECOM</b>	<b>730</b>	<b>14.2</b>	<b>14.1%</b>
<b>4-JOR ISLAMIC BANK</b>	<b>528</b>	<b>11.7</b>	<b>17.7%</b>
<b>5-JOR PHOSPHATE MN</b>	<b>480</b>	<b>NM</b>	<b>0.2%</b>
<b>6-JOR PETROLM REF</b>	<b>422</b>	<b>14.9</b>	<b>22.6%</b>
<b>7-BANK OF JORDAN</b>	<b>414</b>	<b>10.2</b>	<b>12.9%</b>
<b>8-CAIRO AMMAN BANK</b>	<b>401</b>	<b>9.8</b>	<b>15.4%</b>
<b>9-JOR KUWAIT BANK</b>	<b>400</b>	<b>8.4</b>	<b>11.7%</b>
<b>10-EQBAL INV.CO</b>	<b>295</b>	<b>10.5</b>	<b>42.4%</b>

<b>Subtotal</b>	<b>9,543</b>	<b>10.84</b>	<b>7.9%</b>
-----------------	--------------	--------------	-------------

\* ROE is based on FY-2013 Net Profit & Shareholders' Equity as of 31-December-13

### Today's Top Movers and Most Active Stocks

Best Return Performers	Price (JD)	Daily Return
<b>JORDAN PRESS &amp; PUBLISHING</b>	<b>0.37</b>	<b>2.8%</b>
<b>ARAB EAST INVESTMENT</b>	<b>0.55</b>	<b>1.9%</b>
<b>AL-EKBAL PRINTING AND PACKAGING</b>	<b>1.57</b>	<b>1.3%</b>
<b>JORDAN COMMERCIAL BANK</b>	<b>1.09</b>	<b>0.9%</b>
<b>JORDAN KUWAIT BANK</b>	<b>4.00</b>	<b>0.3%</b>

Worst Return Performers	Price (JD)	Daily Return
<b>JORDAN NATIONAL SHIPPING LINES</b>	<b>1.21</b>	<b>(6.9%)</b>
<b>JORDAN INDUSTRIAL RESOURCES</b>	<b>0.38</b>	<b>(5.0%)</b>
<b>NATIONAL ALUMINIUM INDUSTRIAL</b>	<b>0.57</b>	<b>(5.0%)</b>
<b>SPECIALIZED INVESTMENT COMPOUNDS</b>	<b>0.59</b>	<b>(4.8%)</b>
<b>JORDANIAN PHARMACEUTICAL MANUFACTURING</b>	<b>0.82</b>	<b>(4.7%)</b>

Most Active Stocks By Volume	Price (JD)	Volume ('000 Shrs)
<b>AD-DULAYL INDUSTRIAL PARK &amp; REAL ESTATE CO.</b>	<b>1.17</b>	<b>1,775</b>
<b>TRANSPORT&amp; INVESTMENT BARTER CO.</b>	<b>0.53</b>	<b>294</b>
<b>JORDAN STEEL</b>	<b>0.55</b>	<b>201</b>
<b>JORDAN PETROLEUM REFINERY</b>	<b>5.62</b>	<b>181</b>
<b>JORDAN INDUSTRIAL RESOURCES</b>	<b>0.38</b>	<b>178</b>

Source: KAMCO Research

### Market Return, Volatility & Trading Indicators

Market Return	Closing Value	DTD Chg	DTD % Chg	MTD % Chg	YTD-15 % Chg
<b>ASE Index</b>	<b>2,120.28</b>	<b>(14.74)</b>	<b>(0.7%)</b>	<b>(0.7%)</b>	<b>(2.1%)</b>
<b>Market Cap (JD Mn)</b>	<b>13,197.01</b>	<b>(67.91)</b>	<b>(0.5%)</b>	<b>(1.3%)</b>	<b>(5.0%)</b>

Benchmark Volatility**	Since Jan-2014	Since Jan-2013	Since Jan-2012
<b>ASE Index</b>	<b>7.5%</b>	<b>8.0%</b>	<b>7.6%</b>

\*\* Annualized Standard Deviation of Daily Returns

Trading Indicators	Today's Value	DTD Chg	DTD % Chg	Average Daily YTD-15	YTD-14
<b>Volume ('000 Shares)</b>	<b>3,567</b>	<b>(1,772)</b>	<b>(33.2%)</b>	<b>7,096</b>	<b>6,163</b>
<b>Value Traded (JD '000)</b>	<b>4,615</b>	<b>(1,654)</b>	<b>(26.4%)</b>	<b>7,314</b>	<b>7,809</b>
<b>No. of Trades</b>	<b>1,796</b>	<b>(414)</b>	<b>(18.7%)</b>	<b>2,587</b>	<b>2,690</b>

<b>Market Breadth</b>	<b>▲ 5 ▼ 35 = 79</b>
-----------------------	----------------------

### YTD-2015 Top Movers and Most Active Stocks

YTD-15 Best Return Performers	Price (JD)	Volume ('000 Shrs)	YTD-15 Return
<b>JORDAN DAIRY</b>	<b>6.12</b>	<b>45.1</b>	<b>203.0%</b>
<b>UNIVERSAL CHEMICAL INDUSTRIES</b>	<b>1.02</b>	<b>16.0</b>	<b>88.9%</b>
<b>JORDAN PETROLEUM REFINERY</b>	<b>5.62</b>	<b>6,337.8</b>	<b>57.9%</b>
<b>AD-DULAYL INDUSTRIAL PARK &amp; REAL ESTATE CO.</b>	<b>1.17</b>	<b>135,354.2</b>	<b>42.7%</b>
<b>CENTURY INVESTMENT GROUP</b>	<b>2.10</b>	<b>16,863.1</b>	<b>32.9%</b>

YTD-15 Worst Return Performers	Price (JD)	Volume ('000 Shrs)	YTD-15 Return
<b>M. E PHARMA. &amp; CHMICAL IND. &amp; MEDICAL APPLIANCE</b>	<b>0.65</b>	<b>7.2</b>	<b>(67.2%)</b>
<b>COMPREHENSIVE MULTIPLE PROJECT CO.</b>	<b>0.73</b>	<b>4.9</b>	<b>(41.1%)</b>
<b>NUTRIDAR</b>	<b>0.46</b>	<b>6.3</b>	<b>(34.3%)</b>
<b>TRANSPORT&amp; INVESTMENT BARTER CO.</b>	<b>0.53</b>	<b>72,742.9</b>	<b>(27.4%)</b>
<b>JORDAN PRESS FOUNDATION/AL-RA'I</b>	<b>1.48</b>	<b>215.1</b>	<b>(26.7%)</b>

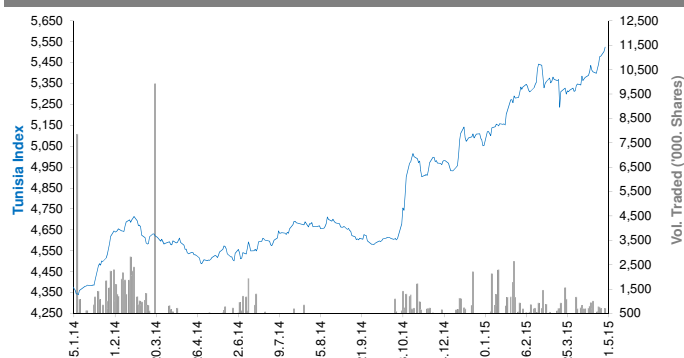
YTD-15 Most Active Stocks by Volume	Price (JD)	Volume ('000 Shrs)	YTD-15 Return
<b>AD-DULAYL INDUSTRIAL PARK &amp; REAL ESTATE CO.</b>	<b>1.17</b>	<b>135,354</b>	<b>42.7%</b>
<b>TRANSPORT&amp; INVESTMENT BARTER CO.</b>	<b>0.53</b>	<b>72,743</b>	<b>(27.4%)</b>
<b>JORDAN INDUSTRIAL RESOURCES</b>	<b>0.38</b>	<b>61,180</b>	<b>(22.4%)</b>
<b>SPECIALIZED INVESTMENT COMPOUNDS</b>	<b>0.59</b>	<b>40,075</b>	<b>1.7%</b>
<b>REAL ESTATE DEVELOPMENT</b>	<b>0.23</b>	<b>35,582</b>	<b>27.8%</b>

YTD-15 Return: Is a total return which accounts in addition to the change in price the cash & share dividends announced during the year.

## Tunisia Stock Exchange Daily Report

April 29, 2015

### Index Performance relative to Volume



### Sectors' Return & Valuation Multiples

	Market Cap. (DT Mn)	MTD % Chg	P/E (X)	P/B (X)	Yield (%)
Tunis Stock Exchange	17,583	3.8%	21.43	2.01	2.1%
Banking	6,703	1.6%	14.69	1.46	2.2%
Insurance	799	6.2%	19.55	1.58	0.8%
Leasing	509	0.5%	11.86	1.19	3.6%
Financial Services	1,367	(0.8%)	16.61	2.17	2.5%
Industrial	1,297	4.4%	14.81	2.66	2.5%
Chemical Industry	692	(3.9%)	41.83	2.09	4.4%
Food & Beverage	3,804	10.4%	27.77	5.81	1.3%
Retailing	1,532	7.8%	NM	4.41	2.9%
Others	880	1.3%	NM	1.09	1.2%

Sectors' MTD Return is based on the Change in market cap. and it might not conform with the benchmark return for each sector

### Top 10 Stocks by Market Capitalization

	Market Cap. (DT Mn)	P/E (X)	ROE* (%)
1-Société Frigorifique et Brasserie de Tunis	2,808	25.03	22.0%
2-Banque de Tunisie	1,605	21.43	12.3%
3-Banque Internationale Arabe de Tunisie	1,401	17.55	13.1%
4-Banque Attijari De Tunisie	1,105	13.37	21.3%
5-Poulina Group Holding	958	14.24	12.1%
6-Delice Holding	916	36.63	24.5%
7-Amen Bank	618	5.82	17.3%
8-Union Bancaire pour le Commerce et	506	61.92	3.1%
9-Arab Tunisian Bank	458	9.54	9.8%
10-Société d'Articles Hygiéniques	446	31.24	13.4%

Subtotal	10,821	17.49	14.6%
----------	--------	-------	-------

\*: ROE is based on Net Profit for the Period FY-13 & Shareholders' Equity as of 31-December-13

### Today's Top Movers and Most Active Stocks

Best Return Performers	Price (DT)	Daily Return
Société Tunisienne de Banque	5.62	6.0%
Société Nouvelle Maison de la Ville de Tunis	20.41	5.2%
Société Indust. d'Appareillage et Matériel Electrique	2.13	4.4%
Euro-Cycles	21.30	3.9%
Ciments De Bizerte	5.70	3.6%

Worst Return Performers	Price (DT)	Daily Return
Assurances Salim	20.00	(4.3%)
Société Chimique Alkimia	55.81	(2.9%)
Société Générale Industrielle de Filtration	3.07	(2.5%)
Société d'Articles Hygiéniques	12.82	(2.1%)
Modern Leasing	5.18	(1.7%)

Most Active Stocks By Volume	Price (DT)	Volume (Shares)
Société Moderne de Céramique	2.98	107,079
Banque Nationale Agricole	9.97	96,357
Société Frigorifique et Brasserie de Tunis	31.20	72,201
Société Indust. d'Appareillage et Matériel Electrique	2.13	53,773
SOTIPAPIER	4.78	26,254

Source: KAMCO Research

### Market Return, Volatility & Trading Indicators

Market Return	Closing Value	DTD Chg	DTD % Chg	MTD % Chg	YTD-15 % Chg
Tunisia Index	5,523.73	20.77	0.4%	4.0%	8.5%
Market Cap (DT Mln)	17,583	71.00	0.4%	3.8%	8.5%

Benchmark Volatility	Since Jan-14	Since Jan-13	Since Jan-12
Tunisia Index	6.9%	7.0%	7.0%

Trading Indicators	Today's Value	DTD Chg	DTD % Chg	Average Daily YTD-15	YTD-14
Volume ('000 Shares)	708	258.5	57.4%	712	1,104
Value Traded ('000 DT)	7,022	3,889	124.1%	6,580	6,771
No. of Trades	1,831	427	30.4%	1,553	1,969

Market Breadth	▲ 30	▼ 17	= 17
----------------	------	------	------

### YTD-2015 Top Movers and Most Active Stocks

YTD-15 Best Return Performers	Price (DT)	Volume ('000 Shrs)	YTD-15 Return
Société Frigorifique et Brasserie de Tunis	31.20	5,939.2	38.7%
Société de Placement et de Dévelop. Ind. et Touristique	12.53	159.3	36.3%
Banque de l'Habitat	13.70	1,846.5	33.7%
City Cars	14.98	267.6	31.4%
Euro-Cycles	21.30	735.8	31.3%

YTD-15 Worst Return Performers	Price (DT)	Volume ('000 Shrs)	YTD-15 Return
Société Tunisienne d'Equipeement	4.90	0.091	(52.9%)
Société Tunis. d'Entreprises de Télécom.	2.29	377.6	(33.6%)
Assurances Salim	20.00	56.2	(24.0%)
Société Essoukna	5.00	136.2	(20.5%)
Electrostar	5.61	1,540.9	(18.6%)

YTD-15 Most Active Stocks by Volume	Price (DT)	Volume ('000 Shrs)	YTD-15 Return
Société Moderne de Céramique	2.98	11,516.7	18.7%
Société Frigorifique et Brasserie de Tunis	31.20	5,939.2	38.7%
Société d'Articles Hygiéniques	12.82	4,417.6	22.4%
TUNISAIR	0.95	2,416.4	(15.9%)
Delice Holding	16.68	2,365.0	0.1

YTD-15 Return: Is a total return which accounts in addition to the change in price the cash & share dividends announced during the year.

## Beirut Stock Exchange Daily Report

April 29, 2015

### Index Performance relative to Volume



### Sectors' Return & Valuation Multiples

	Market Cap. (USD Mn)	MTD % Chg	P/E (X)	P/B (X)	Yield (%)
Beirut Stock Exchange	11,530	(3.4%)	8.63	0.98	3.9%
Banking	9,310	(4.7%)	8.20	0.96	4.7%
Industrial	348	7.5%	13.80	1.51	4.6%
Trading	35	0.0%	11.56	0.69	8.5%
Real Estate & Construction	1,857	1.4%	10.16	1.00	0.0%

Sectors' MTD Return is based on the Change in market cap. and it might not conform with the benchmark return for each sector

### Market Breadth

▲	2	▼	2	=	26
---	---	---	---	---	----

### Top 10 Stocks by Market Capitalization

	Market Cap. (USD Mn)	P/E (X)	ROE* (%)
1- Bank Audi	2,434	10.63	11.3%
2- BLOM Bank	2,000	8.43	15.0%
3- Solidere A	1,124	6.15	9.8%
4- Byblos Bank	990	6.65	9.3%
5- Bank Audi GDR	767	-	-
6- Solidere B	733	4.01	9.8%
7- BLOM Bank GDR	713	-	-
8- Holcim Liban	317	14.54	10.2%
9- Bank Of Beirut	310	5.16	11.0%
10- Byblos Bank Preferred 2009	205	-	-
Subtotal	9,592	7.33	11.2%

\*: ROE is based on Net Profit for the period ended December-13 and Shareholders' equity as of 31-December-13

### Today's Top Movers and Most Active Stocks

Best Return Performers	Price (USD)	Daily Return
Solidere B	11.27	0.3%
Solidere A	11.24	0.1%

Worst Return Performers	Price (USD)	Daily Return
BLOM Bank GDR	9.65	(1.2%)
Bank Audi	6.09	(0.2%)

Most Active Stocks by Volume	Price (USD)	Volume (Shares)
Bank Audi	6.09	20,721
Solidere A	11.24	18,682
BLOM Bank GDR	9.65	2,270
Bank Audi Preferred F	100.00	1,950
Solidere B	11.27	1,551

Source: KAMCO Research

### Market Return, Volatility & Trading Indicators

Market Return	Closing Value	DTD Chg	DTD % Chg	MTD % Chg	YTD-15 % Chg
KAMCO BeirutSE TRW Index	1,124.50	(0.97)	(0.1%)	(3.4%)	2.9%
Market Cap (USD Mn)	11,530.172	(9.92)	(0.1%)	(3.4%)	2.7%

Benchmark Volatility	Since Jan-14	Since Jan-13	Since Jan-12
KAMCO BeirutSE TRW Index	8.0%	7.5%	7.2%

Trading Indicators	Today's Value	DTD Chg	DTD % Chg	Average Daily YTD-15	YTD-14
Volume ('000s shares)	46.40	(4)	(7.7%)	472	662
Value Traded ('000s USD)	579.92	(54)	(8.5%)	3,404	2,878

### YTD-2015 Top Movers and Most Active Stocks

YTD Best Return Performers	Price (USD)	YTD Volume (Shares)	YTD-15 Return
Byblos Bank	1.75	3,581,443	9.4%
BEMO Bank	1.88	139,874	7.4%
Holcim Liban	16.25	11,418	6.6%
BLOM Bank	9.30	2,175,749	5.7%
Bank Audi	6.09	19,448,221	1.5%

YTD Worst Return Performers	Price (USD)	YTD Volume (Shares)	YTD-15 Return
Bank Audi Preferred H	100.000	5,054	(2.2%)
Bank Audi Preferred F	100.000	14,239	(2.2%)
BLOM Bank GDR	9.650	96,596	(1.5%)
Bank Audi Preferred G	100.000	10,750	(1.5%)
Byblos Bank Preferred 2008	101.10	20,874	(0.9%)

YTD Most Active Stocks by Volume	Price (USD)	YTD Volume (Shares)	YTD-15 Return
Bank Audi	6.09	19,448,221	1.5%
Bank Audi GDR	6.60	6,759,509	0.8%
Byblos Bank	1.75	3,581,443	9.4%
BLOM Bank	9.30	2,175,749	5.7%
Solidere A	11.24	1,483,247	(0.7%)

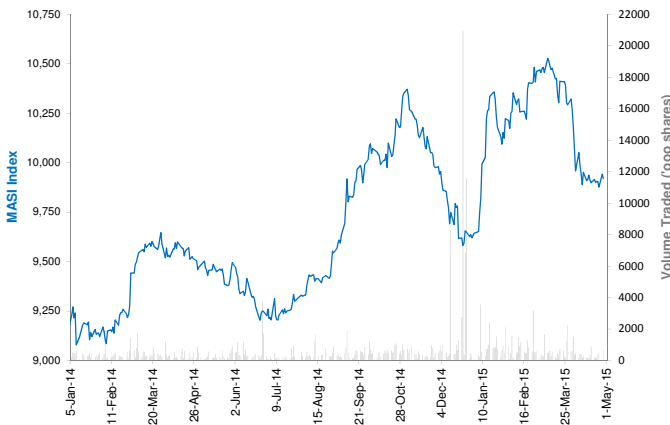
YTD-15 Return: Is a total return which accounts in addition to the change in price the cash & share dividends announced during the year.

## Casablanca Stock Exchange Daily Report

(The Bulletin covers the 41 Stocks listed on the Main Market)

April 29, 2015

### Index Performance relative to Volume



### Market Breadth

▲ 11 ▼ 11 = 19

### Top 10 Stocks by Market Capitalization

	Market Cap. (MAD Mn)	P/E (X)	ROE* (%)
1-Itissalat Al-Maghrib	112,788	20.4	36.1%
2-Attijariwafa Bank	72,448	17.5	12.5%
3-Banque Marocaine Du Commerce Exterieur	39,482	32.1	8.3%
4-Banque Centrale Populaire	38,264	20.4	6.7%
5-Ciments Du Maroc	15,880	19.6	13.1%
6-Wafa Assurances	13,650	17.5	19.9%
7-CIE Generale Immobiliere	13,346	36.4	8.2%
8-Douja Prom Addoha	9,545	5.7	15.5%
9-Holcim Maroc	9,283	24.6	11.4%
10-Credit Immobilier Et Hotelier	8,781	17.1	11.3%
<b>Subtotal</b>	<b>333,465</b>	<b>19.26</b>	<b>13.9%</b>

\*: ROE is based on Net Profit for the period FY-13 and Shareholders' equity as of 31-December-13

### Today's Top Movers and Most Active Stocks

Best Return Performers	Price (MAD)	Daily Return
Miniere Touissit	1,307.00	3.1%
Marocaine de l Industrie du Raffinage	165.00	1.9%
Auto Hall	90.00	1.7%
ENNAKL Automobiles	40.50	1.3%
SAHAM ASSURANCE	1,160.00	0.9%

Worst Return Performers	Price (MAD)	Daily Return
Compagnie d'Assurances et de Reassurances ATLANTA	65.89	(3.0%)
Wafa Assurances	3,900.00	(2.1%)
Lyonnaise des Eaux de Casablanca	416.00	(2.1%)
Risma	210.00	(2.1%)
Med Paper	16.45	(1.5%)

Most Active Stocks By Volume	Price (MAD)	Volume (Shrs)
Itissalat Al-Maghrib	128.30	276,778
Douja Prom Addoha	30.30	192,356
Comp Suc Maroc Et De Raff	181.00	106,620
Attijariwafa Bank	360.00	54,752
Med Paper	16.45	14,706

Source: KAMCO Research

### Sectors' Return & Valuation Multiples

	Market Cap. (MAD Mn)	MTD % Chg	P/E (X)	P/B (X)	Yield (%)
<b>Casablanca Stock Exchange</b>	<b>443,281</b>	<b>(3.7%)</b>	<b>18.3</b>	<b>2.3</b>	<b>3.8%</b>
Banking	172,672	(3.5%)	19.9	1.9	2.5%
Beverages	1,772	0.0%	22.3	3.4	2.8%
Chemicals	331	2.2%	NM	0.7	0.0%
Construction & Bldg. Material	58,525	(6.2%)	21.9	3.5	3.7%
Distributors	8,426	(4.2%)	26.9	2.3	2.6%
Electrical & Electronic Equipment	415	(7.0%)	41.7	0.6	6.5%
Electricity	1,111	(0.2%)	2.8	0.2	0.0%
Food Producers & Processors	3,699	1.7%	4.9	0.7	14.5%
Holding Companies	2,409	(5.2%)	23.5	2.0	3.9%
Insurance	22,392	(2.6%)	19.7	3.2	1.9%
Investment & other Finance	3,747	(2.8%)	13.7	1.7	7.4%
Leisures & Hotel	1,655	(5.4%)	NM	1.8	0.0%
Materials, Software & Computer	739	(2.3%)	13.3	1.0	5.3%
Mining	15,402	(1.4%)	12.1	2.6	7.3%
Oil & Gas	8,753	(7.3%)	NM	1.1	0.0%
Real Estate	24,612	(0.5%)	9.4	1.2	4.7%
Telecommunications	112,788	(3.5%)	20.4	7.4	5.8%
Transport	464	(5.4%)	13.2	1.7	6.6%
Utilities	3,328	(5.5%)	11.2	2.0	5.4%
Forestry & Paper	42	(6.9%)	NM	0.7	0.0%

Sectors' MTD Return is based on the Change in market cap. and it might not conform with the benchmark return for each sector

### Market Return, Volatility & Trading Indicators

Market Return	Closing Value	DTD Chg	DTD % Chg	MTD % Chg	YTD-15 % Chg
MASI Index	9,920.50	(21.1)	(0.2%)	(3.4%)	3.1%
MADEX Index	8,135.77	(16.0)	(0.2%)	(3.5%)	3.7%
Market Cap (MAD Mn)	443,281	(0.9)	(0.2%)	(3.7%)	2.7%

Benchmark Volatility**	YTD-14	Since Jan-13	Since Jan-12	Since Jan-11	Since Jan-10
MASI Index	7.7%	8.2%	8.8%	9.8%	9.8%
MADEX Index	9.6%	8.1%	8.6%	9.1%	10.1%

\*\*: Annualized Standard Deviation of Daily Returns

Trading Indicators	Today's Value	DTD Chg	DTD % Chg	Average Daily YTD-15	YTD-14
Volume ('000 Shares)	671.79	612.14	1,026.1%	664	516
Value Traded (MAD Mn)	43.04	36.81	591.7%	49	70

### YTD-2015 Top Movers and Most Active Stocks

YTD Best Return Performers	Price (MAD)	Volume (Shrs)	YTD-15 Return
Hightech Payment Systems SA	450.00	24,458	20.9%
Ciments Du Maroc	1,100.00	169,404	17.0%
TAQA MOROCCO	497.20	410,451	17.0%
Compagnie de Transport au Maroc	378.50	19,118	16.5%
SAHAM ASSURANCE	1,160.00	42,203	15.9%

YTD Worst Return Performers	Price (MAD)	Volume (Shrs)	YTD-15 Return
Alliances Developpement Immobilier	138.00	734,121	(50.3%)
Med Paper	16.45	390,382	(40.9%)
Societe Nationale d'Electrolyse et de Petrochimie	137.95	56,929	(33.3%)
Marocaine de l Industrie du Raffinage	165.00	295,324	(31.5%)
Fenie Brossette	144.00	15,918	(25.4%)

YTD Most Active Stocks by Volume	Price (MAD)	Volume ('000 Shrs)	YTD-15 Return
Douja Prom Addoha	30.30	20,678	(19.4%)
Itissalat Al-Maghrib	128.30	11,847	12.7%
Comp Suc Maroc Et De Raff	181.00	5,186	8.4%
Attijariwafa Bank	360.00	3,327	4.7%
Compagnie d'Assurances et de Reassurances ATLANTA	65.89	3,294	0.9%

YTD-15 Return: accounts in addition to the chg in price the cash & share dividends announced during the year.

## Damascus Securities Exchange Daily Report

April 29, 2015

### Index Performance relative to Volume



### Sectors' Return & Valuation Multiples

	Market Cap. (SRY Mn)	MTD % Chg	P/E (X)	P/B (X)	Yield (%)
<b>Damascus SE</b>	<b>124,932</b>	<b>(3.4%)</b>	<b>6.4</b>	<b>1.0</b>	<b>1.1%</b>
<b>Banking</b>	<b>111,968</b>	<b>(3.1%)</b>	<b>6.21</b>	<b>1.03</b>	<b>0.0%</b>
<b>Services</b>	<b>1,470</b>	<b>(2.0%)</b>	<b>NM</b>	<b>2.85</b>	<b>0.0%</b>
<b>Industrial</b>	<b>3,083</b>	<b>(11.9%)</b>	<b>5.80</b>	<b>1.34</b>	<b>0.0%</b>
<b>Insurance</b>	<b>7,873</b>	<b>(3.9%)</b>	<b>8.41</b>	<b>0.96</b>	<b>17.1%</b>
<b>Agricultural</b>	<b>539</b>	<b>0.0%</b>	<b>NM</b>	<b>3.81</b>	<b>0.0%</b>

Sectors' MTD Return is based on the Change in market cap. and it might not conform with the benchmark return for each sector

### Market Breadth

▲ 0 ▼ 2 = 22

### Top 10 Stocks by Market Capitalization

	Market Cap. (SRY Mn)	Trailing P/E (X)	ROE* (%)
1- Banque Bemo Saudi Fransi	16,950	8.6	22.0%
2- Qatar National Bank - Syria	14,850	1.7	31.9%
3- Bank Audi Syria	13,238	41.8	4.3%
4- Bank Of Syria And Overseas	9,400	55.7	2.9%
5- Arab Bank- Syria	9,301	8.3	15.9%
6- The Int'l Bank For Trade & Finance	8,216	NM	0.0%
7- Syria International Islamic Bank	8,032	41.4	2.0%
8- Byblos Bank Syria	7,650	16.9	6.5%
9- Al Baraka Bank - Syria	5,463	2.1	34.2%
10- Cham Bank	4,713	2.0	31.2%
<b>Subtotal</b>	<b>93,100</b>	<b>6.00</b>	<b>17.5%</b>

\* ROE is based on FY-2013 Net Profit & Shareholders' Equity as of 31-December-13

### Today's Top Movers & Most Active Stocks

Best Return Performers	Price (SRY)	Daily Return
No Gainers		

Worst Return Performers	Price (SRY)	Daily Return
Al Baraka Bank - Syria	109.25	(2.0%)
United Insurance Co.	146.25	(1.8%)

Most Active Stocks by Volume	Price (SRY)	Volume (Shrs)
United Insurance Co.	146.25	12,535
Bank Of Syria And Overseas	235.00	8,865
Al Baraka Bank - Syria	109.25	2,090
Fransabank Syria	92.75	700
Qatar National Bank Syria	99.00	675

Source: KAMCO Research

### Market Return, Volatility & Trading Indicators

Market Return	Closing Value	DTD Chg.	DTD % Chg.	MTD % Chg.	YTD-15 % Chg.
<b>DSE Weighted Index</b>	<b>1,206.43</b>	<b>(1.28)</b>	<b>(0.1%)</b>	<b>(2.9%)</b>	<b>(5.1%)</b>
<b>Market Cap (SRY Mn)</b>	<b>124,932</b>	<b>(133)</b>	<b>(0.1%)</b>	<b>(3.4%)</b>	<b>(5.6%)</b>

Benchmark Volatility	Since Jan-14	Since Jan-13	Since Jan-12
<b>DSE Weighted Index</b>	<b>5.1%</b>	<b>10.5%</b>	<b>9.4%</b>

\*\* Annualized Standard Deviation of Daily Returns

Trading Indicators	Today's Value	DTD Chg.	DTD % Chg.	Average Daily YTD-15	YTD-14
<b>Volume (Shrs)</b>	<b>25,515</b>	<b>(6,176)</b>	<b>(19.5%)</b>	<b>37,092</b>	<b>344</b>
<b>Value Traded ('000 SRY)</b>	<b>4,338</b>	<b>(1,238)</b>	<b>(22.2%)</b>	<b>5,146</b>	<b>9,997</b>
<b>No. of Trades</b>	<b>18</b>	<b>(5.0)</b>	<b>(21.7%)</b>	<b>26</b>	<b>38</b>

### YTD-2015 Top Movers & Most Active Stocks

YTD Best Return Performers	Price (SRY)	YTD Vol. (Shrs)	YTD-15 Return
<b>Bank Of Syria And Overseas</b>	<b>235.00</b>	<b>183,522</b>	<b>2.6%</b>
<b>Arab Bank- Syria</b>	<b>184.18</b>	<b>106,417</b>	<b>1.2%</b>
<b>Byblos Bank Syria</b>	<b>125.00</b>	<b>2,713</b>	<b>0.4%</b>

YTD Worst Return Performers	Price (SRY)	YTD Vol. (Shrs)	YTD-15 Return
<b>National Insurance Company</b>	<b>118.25</b>	<b>750</b>	<b>(17.5%)</b>
<b>Qatar National Bank Syria</b>	<b>99.00</b>	<b>375,524</b>	<b>(17.3%)</b>
<b>Syria International Islamic Bank</b>	<b>94.50</b>	<b>447,461</b>	<b>(13.9%)</b>
<b>Al Baraka Bank - Syria</b>	<b>109.25</b>	<b>794,247</b>	<b>(13.2%)</b>
<b>Cham Bank</b>	<b>94.25</b>	<b>183,954</b>	<b>(9.6%)</b>

YTD Most Active Stocks by Volume	Price (SRY)	YTD Vol. (Shrs)	YTD-15 Return
<b>Al Baraka Bank - Syria</b>	<b>109.25</b>	<b>794,247</b>	<b>(13.2%)</b>
<b>Syria International Islamic Bank</b>	<b>94.50</b>	<b>447,461</b>	<b>(13.9%)</b>
<b>Qatar National Bank Syria</b>	<b>99.00</b>	<b>375,524</b>	<b>(17.3%)</b>
<b>Cham Bank</b>	<b>94.25</b>	<b>183,954</b>	<b>(9.6%)</b>
<b>Bank Of Syria And Overseas</b>	<b>235.00</b>	<b>183,522</b>	<b>2.6%</b>

YTD-15 Return: Is a total return which accounts in addition to the change in price the cash & share dividends announced during the year.



---

## Disclaimer & Important Disclosures

KAMCO is authorized and fully regulated by the Capital Markets Authority ("CMA") and partially regulated by the Central Bank of Kuwait ("CBK")

This document is provided for informational purposes only. Nothing contained in this document constitutes investment, an offer to invest, legal, tax or other advice or guidance and should be disregarded when considering or making investment decisions. In preparing this document, KAMCO did not take into account the investment objectives, financial situation and particular needs of any particular person. Accordingly, before acting on this document, investors should independently evaluate the investments and strategies referred to herein and make their own determination of whether it is appropriate in light of their own financial circumstances and objectives. The entire content of this document is subject to copyright with all rights reserved. This research and the information contained herein may not be reproduced, distributed or transmitted in Kuwait or in any other jurisdiction to any other person or incorporated in any way into another document or other material without our prior written consent.

### Analyst Certification

Each of the analysts identified in this report certifies, with respect to the sector, companies or securities that the individual analyses, that (1) the views expressed in this report reflect his or her personal views about all of the subject companies and securities and (2) no part of his or her compensation was, is or will be directly or indirectly dependent on the specific recommendations or views expressed in this report.

### KAMCO Ratings

KAMCO investment research is based on the analysis of regional and country economics, industries and company fundamentals. KAMCO company research reflects a long-term (12-month) target price for a company or stock. The ratings bands are:

- \* **Outperform:** Target Price represents expected returns  $\geq 10\%$  in the next 12 months
- \* **Neutral:** Target Price represents expected returns between  $-10\%$  and  $+10\%$  in the next 12 months
- \* **Underperform:** Target Price represents an expected return of  $<-10\%$  in the next 12 months

In certain circumstances, ratings may differ from those implied by a fair value target using the criteria above. KAMCO policy is to maintain up-to-date fair value targets on the companies under its coverage, reflecting any material changes to the analyst's outlook on a company. Share price volatility may cause a stock to move outside the rating range implied by KAMCO's fair value target. Analysts may not necessarily change their ratings if this happens, but are expected to disclose the rationale behind their view to KAMCO clients.

Any terms and conditions proposed by you which are in addition to or which conflict with this Disclaimer are expressly rejected by KAMCO and shall be of no force or effect. The information contained in this document is based on current trade, statistical and other public information we consider reliable. We do not represent or warrant that such information is fair, accurate or complete and it should not be relied upon as such. KAMCO has no obligation to update, modify or amend this document or to otherwise notify a recipient thereof in the event that any opinion, forecast or estimate set forth herein, changes or subsequently becomes inaccurate. The publication is provided for informational uses only and is not intended for trading purposes. The information on publications does not give rise to any legally binding obligation and/or agreement, including without limitation any obligation to update such information. You shall be responsible for conducting your own investigation and analysis of the information contained or referred to in this document and of evaluating the merits and risks involved in the securities forming the subject matter of this or other such document. Moreover, the provision of certain data/information in the publication may be subject to the terms and conditions of other agreements to which KAMCO is a party.

Nothing in this document should be construed as a solicitation or offer, or recommendation, to acquire or dispose of any investment or to engage in any other transaction, or to provide any investment advice or service. This document is directed at Professional Clients and not Retail Clients within the meaning of CMA rules. Any other persons in receipt of this document must not rely upon or otherwise act upon it. Entities and individuals into whose possession this document comes are required to inform themselves about, and observe such restrictions and should not rely upon or otherwise act upon this document where it is unlawful to make to such person such an offer or invitation or recommendation without compliance with any authorization, registration or other legal requirements.

### Risk Warnings

Any prices, valuations or forecasts are indicative and are not intended to predict actual results, which may differ substantially from those reflected. The value of an investment may go up as well as down. The value of and income from any investment may fluctuate from day to day as a result of changes in relevant economic markets (including, without limitation, foreseeable or unforeseeable changes in interest rates, foreign exchange rates, default rates, prepayment rates, political or financial conditions, etc.).

Past performance is not indicative of future results. Any opinions, estimates, valuations or projections (target prices and ratings in particular) are inherently imprecise and a matter of judgment. They are statements of opinion and not of fact, based on current expectations, estimates and projections, and rely on beliefs and assumptions. Actual outcomes and returns may differ materially from what is expressed or forecasted. There are no guarantees of future performance. Certain transactions, including those involving futures, options, and other derivatives, give rise to substantial risk and are not suitable for all investors. This document does not propose to identify or to suggest all of the risks (direct or indirect) which may be associated with the investments and strategies referred to herein.

### Conflict of Interest

KAMCO and its affiliates provide full investment banking services, and they and their directors, officers and employees, may take positions which conflict with the views expressed in this document. Salespeople, traders, and other professionals of KAMCO may provide oral or written market commentary or trading strategies to our clients and our proprietary trading desks that reflect opinions that are contrary to the opinions expressed in this document. Our asset management area, our proprietary trading desks and investing businesses may make investment decisions that are inconsistent with the recommendations or views expressed in this document. KAMCO may have or seek investment banking or other business relationships for which it will receive compensation from the companies that are the subject of this document. Facts and views presented in this document have not been reviewed by, and may not reflect information known to, professionals in other KAMCO business areas, including investment banking personnel. United Gulf Bank, Bahrain owns majority of KAMCO's shareholding and this ownership may create, or may create the appearance of, conflicts of interest.

### No Liability & Warranty

KAMCO makes neither implied nor expressed representations or warranties and, to the fullest extent permitted by applicable law, we hereby expressly disclaim any and all express, implied and statutory representations and warranties of any kind, including, without limitation, any warranty as to accuracy, timeliness, completeness, and fitness for a particular purpose and/or non-infringement. KAMCO will accept no liability in any event including (without limitation) your reliance on the information contained in this document, any negligence for any damages or loss of any kind, including (without limitation) direct, indirect, incidental, special or consequential damages, expenses or losses arising out of, or in connection with your use or inability to use this document, or in connection with any error, omission, defect, computer virus or system failure, or loss of any profit, goodwill or reputation, even if expressly advised of the possibility of such loss or damages, arising out of or in connection with your use of this document. We do not exclude our duties or liabilities under binding applicable law.



---

**KAMCO Investment Company – K.S.C (Public)**

Al-Shaheed Tower, Khalid Bin Al-Waleed Street- Sharq

P.O. BOX : 28873, Safat 13149, State of Kuwait

Tel: (+965) 1852626 Fax: (+965) 22492395

Email : [Kamcoird@kamconline.com](mailto:Kamcoird@kamconline.com)