

## MENA Markets Daily Report

August 18, 2015

	Country	Benchmark		Index Value	DTD Change	YTD 2015	FY 2014
<b>MENA Countries</b>							
<b>In this Report...</b>	Kuwait	KSE Price Index	▼	6,196.10	(1.1%)	(5.2%)	(13.4%)
Kuwait ..... 2	Kuwait	KSE Weighted Index	▼	412.46	(0.8%)	(6.0%)	(3.1%)
Saudi Arabia ..... 3	Kuwait	KSE - 15 Index	▼	989.76	(0.7%)	(6.6%)	(0.8%)
UAE - Dubai ..... 4	Saudi Arabia	TADAWUL All Share Index	▼	8,437.26	(0.3%)	1.2%	(2.4%)
UAE - Abu Dhabi ..... 5	UAE - Dubai	DFM General Index	▼	3,926.86	(0.1%)	4.1%	12.0%
Qatar ..... 6	UAE - Abu Dhabi	ADX General Index	▼	4,631.31	(0.8%)	2.3%	5.6%
Bahrain ..... 7	Qatar	QE 20 Index	▼	11,734.69	(0.9%)	(4.5%)	18.4%
Oman ..... 8	Bahrain	Bahrain All Share	▼	1,331.56	(0.0%)	(6.7%)	14.2%
Egypt ..... 9	Oman	MSM 30 Index	▼	6,219.77	(1.2%)	(1.9%)	(7.2%)
Jordan ..... 10	Egypt	EGX 30	▼	7,594.89	(0.4%)	(14.9%)	31.6%
Tunisia ..... 11	Jordan	ASE Index	▲	2,124.82	0.3%	(1.9%)	4.8%
Lebanon ..... 12	Lebanon	KAMCO Beirut SE TRW Index	▼	1,108.67	(0.2%)	1.5%	3.5%
Morocco ..... 13	Tunisia	Tunisia Index	▼	5,533.08	(0.7%)	8.7%	16.2%
Syria ..... 14	Morocco	MASI	▼	9,637.40	(0.2%)	0.2%	5.6%
	Syria	DSE Weighted Index	▲	1,207.26	0.0%	(5.0%)	1.7%
<b>Emerging Markets</b>							
	China	SSE Composite Index	▲	3,993.67	0.7%	20.5%	52.9%
	Russia	RUSSIAN RTS INDEX (\$)	▼	825.12	(1.2%)	4.4%	(45.2%)
	India	SENSEX	▼	27,878.27	(0.7%)	1.9%	29.9%
	Brazil	BOVESPA Stock Index	▼	47,217.43	(0.6%)	(5.6%)	(2.9%)
	Mexico	BOLSA Index	▲	43,953.48	0.5%	1.9%	1.0%
	Korea	KOSPI Index	▼	1,968.52	(0.8%)	2.4%	(4.8%)
	Taiwan	TAIEX Index	▼	8,213.42	(1.1%)	(12.1%)	8.1%
<b>Global Markets</b>							
	World	MSCI World Index	▲	1,749.08	0.3%	2.3%	2.9%
	Asia	MSCI Asia Pacific	▼	137.86	(0.3%)	(0.0%)	(2.5%)
	Europe	DJ Stoxx 600	▲	387.26	0.3%	13.1%	4.4%
	Europe	FTSEurofirst 300	▲	1,532.04	0.3%	11.9%	4.0%
	Emerging Markets	MSCI EM Index	▼	854.71	(1.1%)	(10.6%)	(4.6%)
	U.S.A	S&P 500	▲	2,102.44	0.5%	2.1%	11.4%
	U.S.A	DJIA	▲	17,545.18	0.4%	(1.6%)	7.5%
	U.S.A	NASDAQ Composite	▲	5,091.70	0.9%	7.5%	13.4%
	UK	FTSE 100	▼	6,550.30	(0.0%)	(0.2%)	(2.7%)
	Germany	DAX	▼	10,940.33	(0.4%)	11.6%	2.7%
	Japan	NIKKEI 225	▲	20,620.26	0.5%	18.0%	7.1%
	Hong Kong	HANG SENG INDEX	▼	23,814.65	(0.7%)	0.6%	1.3%
<b>Commodities</b>							
	Oil	OPEC Crude	▼	46.62	(1.4%)	(10.4%)	(49.6%)
	Oil	Brent	▼	48.74	(0.9%)	(24.3%)	(45.6%)
	Oil	Kuwait	▲	47.58	3.6%	(9.6%)	(51.7%)
	Natural Gas	NYMEX Natural Gas (USD/MMBtu)	▼	2.73	(2.6%)	(9.4%)	(33.8%)
	Gold	Gold Spot \$/Oz	▲	1,119.15	0.5%	(5.8%)	(1.4%)

Investment Research Department  
Kamcoird@kamconline.com

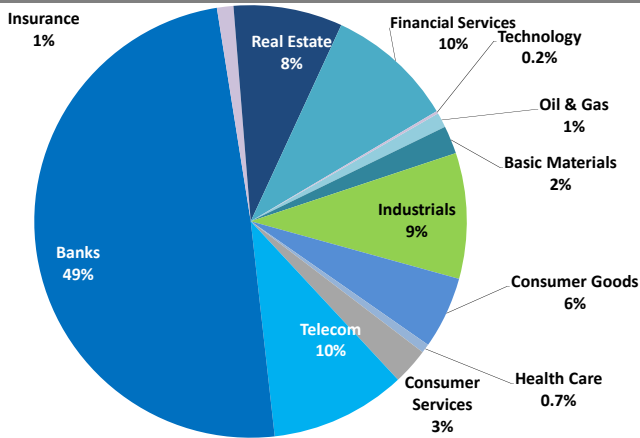
P.O.Box 28873, Safat 13149 Kuwait  
Tel: (965) 1852626, Extn: 1153 / 1146  
Fax: (965) 22492395

<http://www.kamconline.com>

KAMCO Investment Company - K.S.C  
(Public)

Source: Bloomberg & KAMCO Research

#### Sector Weight by Market Cap



#### Top 10 Companies by Market Capitalization

Company Name	Market Cap. (Mn KWD)	P/E (X)	ROE* (%)
1- National Bank of Kuwait	4,233.4	15.4	10.5%
2- Kuwait Finance House	2,906.7	22.3	7.7%
3- Zain	1,728.6	9.6	11.8%
4- Ahli United Bank - Bahrain	1,361.5	9.7	14.6%
5- Kuwait Food Co. (Americana)	1,061.3	20.7	13.6%
6- Kuwait Projects Co.	957.8	20.0	10.0%
7- Commercial Bank of Kuwait	875.4	17.5	8.9%
8- Ahli United Bank - Kuwait	866.2	17.2	15.2%
9- Boubyan Bank	856.2	28.6	10.2%
10- Burgan Bank	840.2	13.5	9.9%
<b>Total</b>	<b>15,687</b>	<b>15.43</b>	<b>10.7%</b>

\*: ROE is calculated based on TTM 1Q-2015 net profit & shareholders' equity as of 31-March-15

#### Top Movers and Most Active Stocks

Today's Top % Gainers	Close (KWD)	Change (KWD)	Percent Change
Livestock Transport & Trading Co.	0.124	0.010	8.8%
Heavy Engineering Ind. & Shipbuilding Co.	0.150	0.010	7.1%
Wethaq Takaful Insurance Co.	0.050	0.003	5.3%
Mashaer Holding Co.	0.120	0.006	5.3%
National Industries Co. For Building Materials	0.232	0.010	4.5%

Today's Top % Losers	Close (KWD)	Change (KWD)	Percent Change
Kuwait Building Materials Manufacturing Co.	0.390	(0.050)	(11.4%)
Kuwait Financial Center	0.104	(0.010)	(8.8%)
Nafais Holding Co.	0.114	(0.010)	(8.1%)
EYAS for Higher & Technical Education	0.305	(0.025)	(7.6%)
Arkan Al-Kuwait Real Estate Co.	0.106	(0.008)	(7.0%)

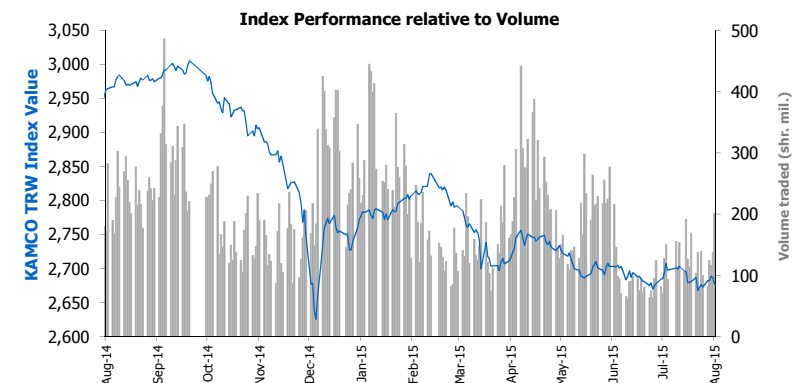
Today's Most Active by Volume	Close (KWD)	Change (KWD)	Volume (Shares)
Nafais Holding Co.	0.114	(0.010)	9,600,481
Hits Telecom Holding Co.	0.031	(0.001)	5,182,250
Al Dar National Real Estate Co.	0.039	0.000	4,404,837
Al Mudon International Real Estate Co.	0.040	(0.001)	3,956,460
KGL Logistics Co.	0.066	(0.003)	3,360,200

Source: KAMCO Research

#### Market Capitalization - Sectors' Return

	Market Cap. (KWD Mn)	DTD	DTD % Chg	MTD % Chg	YTD % Chg
<b>Kuwaiti Stock Exchange</b>	<b>28,260.4</b>	▼	<b>(0.8%)</b>	<b>(1.3%)</b>	<b>(4.9%)</b>
Oil & Gas	316.1	▼	(0.6%)	(2.7%)	(19.2%)
Basic Materials	595.5	▼	(1.8%)	(1.3%)	(8.3%)
Industrials	2,653.8	▼	(1.4%)	1.1%	(2.7%)
Consumer Goods	1,525.1	▼	(0.5%)	(3.4%)	25.3%
Health Care	189.0	▼	(1.0%)	(0.6%)	2.8%
Consumer Services	771.1	▼	(1.5%)	0.3%	(0.8%)
Telecommunications	2,865.4	▼	(0.8%)	(0.9%)	(14.4%)
Banks	13,928.8	▼	(0.5%)	(1.4%)	(4.5%)
Insurance	350.9	▼	(1.5%)	1.1%	(1.7%)
Real Estate	2,305.0	▼	(0.7%)	(2.6%)	(3.7%)
Financial Services	2,705.5	▼	(1.4%)	(2.6%)	(10.2%)
Technology	54.3	▼	(0.6%)	(0.6%)	(3.6%)

Market Breadth	▲	18	▼	78	=	96
Benchmark Return	Closing	DTD	DTD	MTD	YTD	
	Value	Chg	% Chg	% Chg	% Chg	
KSE Price Index	6,196.10	(66.5)	(1.1%)	(0.9%)	(5.2%)	
KSE Weighted Index	412.46	(3.2)	(0.8%)	(1.5%)	(6.0%)	
Kuwait 15 Index	989.76	(7.1)	(0.7%)	(2.5%)	(6.6%)	
Market Cap (KWD Mn)	28,260	(217.6)	(0.8%)	(1.3%)	(4.9%)	



#### Market Trading Data and Volatility

Trading Indicators	Today's Value	DTD Chg	DTD % Chg	Average Daily YTD 2015	YTD 2014
Volume (Shrs Mn)	77.7	(6.2)	(7.4%)	184.2	214.2
Value Traded (KWD Mn)	8.5	(0.4)	(4.5%)	17.6	25.2
No. of Trades	2,694	161.0	6.4%	4,184	4,641

Market Volatility**	Volatility Since January:				
	2015	2014	2013	2012	2011
KSE Price Index	7.3%	9.4%	10.4%	9.8%	9.6%
KSE Weighted Index	8.1%	9.6%	8.9%	8.6%	9.8%

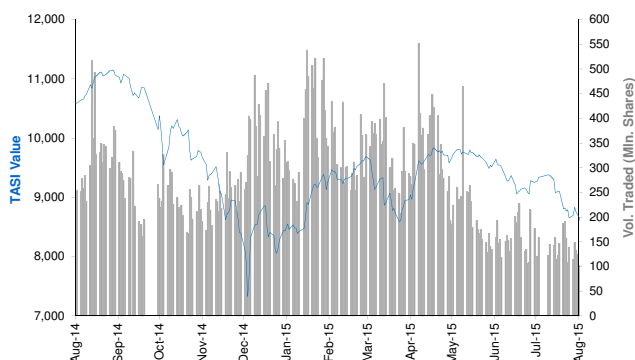
\*\* Annualized Standard Deviation of Daily Returns

Today's Most Active by Value	Close (KWD)	Change (KWD)	Value (KWD)
Nafais Holding Co.	0.114	(0.010)	1,123,542
ZAİN	0.400	(0.005)	651,784
kuwait Telecommunication Co.	0.890	0.000	554,675
National Bank of Kuwait	0.840	0.000	539,095
Gulf Cable & Electrical Industries Co.	0.485	0.005	381,369

## Saudi Tadawul Daily Report

August 18, 2015

### Index Performance relative to Volume



### Top 10 Stocks by Market Capitalization

	Market Cap. (SAR Mn)	P/E (X)	ROE* (%)
1- Saudi Basic Industries Corp	271,710	13.0	12.6%
2- Saudi Telecom	131,440	11.8	18.4%
3- National Commercial Bank	118,520	13.7	18.3%
4- Al-Rajhi Bank	102,684	15.4	15.8%
5- Saudi Electricity Co.	73,665	28.5	4.5%
6- Kingdom Holding Co.	70,449	79.9	2.9%
7- Jabal Omar Development Company	64,101	NM	0.0%
8- AL-Marai Co.	56,838	33.3	15.4%
9- Samba Financial Group	51,640	10.2	13.0%
10- SABBB	48,000	11.2	16.5%

Subtotal 989,047 15.98 12.6%

\* ROE is based on TTM 1Q-2015 Net Profit & Shareholders' Equity as of 31-March-15

### Today's Top Movers and Most Active Stocks

Best Return Performers	Price (SAR)	Daily Return	Value (SAR 000's)
Tabuk Cement Co.	23.13	9.2%	4,890
Aldrees Petroleum & Transport Co.	59.40	2.7%	21,155
Saudi Hotels & Resort Areas Co.	33.33	2.7%	726
The National Shipping Co of Saudi Arabia	39.97	2.5%	75,578
Saudi Hollandi Bank	45.00	2.3%	1,043

Worst Return Performers	Price (SAR)	Daily Return	Value (SAR 000's)
AXA Cooperative Insurance Co.	20.95	(9.4%)	49,496
Takween Advanced Industries	53.32	(8.6%)	161,448
ACE Arabia Cooperative Insurance Co.	69.99	(8.6%)	34,463
Al-Etihad Etisalat Co.	26.26	(6.1%)	402,496
Saudi Enaya Cooperative Insurance Co.	22.99	(5.7%)	11,997

Most Active Stocks By Volume	Price (SAR)	Daily Return	Volume ('000 Shrs)
Alinma Bank	19.97	(0.6%)	32,758
Al-Etihad Etisalat Co.	26.26	(6.1%)	15,173
Dar Al Arkan Real Estate Dev. Co.	8.01	(0.6%)	10,488
Emaar The Economic City	11.63	(0.2%)	8,246
Saudi Kayan	9.60	0.7%	4,964

Source: KAMCO Research

### Sectors' Return & Valuation Multiples

	Market Cap. (SAR Mn)	MTD Return	P/E (X)	P/BV (X)	Yield (%)
Saudi Stock Exchange	1,887,585	(6.9%)	17.6	2.0	2.6%
Banks & Financial	534,258	(5.1%)	12.7	1.8	2.1%
Petrochemical Industries	430,985	(8.6%)	14.6	1.7	2.9%
Cement	81,087	(7.4%)	13.0	2.6	5.9%
Retail	88,602	(4.9%)	29.5	6.1	1.5%
Energy & Utilities	75,780	(3.4%)	27.6	1.3	3.9%
Agric. & Food Ind.	123,011	(4.0%)	24.4	4.2	2.2%
Telecom	158,907	(7.2%)	22.5	1.9	4.4%
Insurance	47,599	(9.2%)	64.0	2.7	0.3%
Multi-Inv.	77,286	(5.4%)	66.3	2.1	2.6%
Indust. Inv.	68,067	(10.6%)	22.0	1.7	1.6%
Bldg. & Const.	23,889	(11.9%)	42.6	2.2	2.9%
Real Estate Dev.	116,952	(7.9%)	43.1	2.2	0.6%
Transport	30,992	(15.9%)	16.8	2.3	2.0%
Media & Publishing	3,587	(6.1%)	NM	1.6	0.0%
Hotel & Tourism	26,582	(7.2%)	17.8	4.6	1.6%

Sectors' MTD Return is based on the Change in market cap. and it might not conform with the benchmark return for each sector

### Market Return, Volatility & Trading Indicators

Market Return	Closing Value	DTD Chg	DTD % Chg	MTD % Chg	YTD-15 % Chg
Tadawul All Share Index	8,437.26	(26.8)	(0.3%)	(7.3%)	1.2%
Market Cap (SAR Mn)	1,887,585	(4,627.9)	(0.2%)	(6.9%)	3.9%
Benchmark Volatility**	Since Jan-14	Since Jan-13	Since Jan-12	Since Jan-11	Since Jan-10
Tadawul All Share Index	19.7%	16.9%	15.9%	16.8%	16.6%
** Annualized Standard Deviation of Daily Returns					
Trading Indicators	Today's Value	DTD Chg	DTD % Chg	Average Daily YTD-15	YTD-14
Volume (Mn Shares)	166	3	1.5%	273	280
Value Traded (SAR Mn)	4,344	91	2.1%	7,436	8,529
No. of Trades	96,205	(4,569)	(4.5%)	131,643	143,248

Market Breadth 41 123 = 5

### YTD-2015 Top Movers and Most Active Stocks

YTD-15 Best Return Performers	Price (SAR)	YTD Val (SAR Mn)	YTD Vol ('000 Shrs)	YTD-15 Return
The Co for Cooperative Ins.	100.83	7,501	93,762	100.5%
Saudi Transport & Investment Co.	60.95	10,253	195,493	81.0%
BUPA Arabia for Cooperative Ins.	265.23	3,495	17,294	55.6%
Saudi Company for Hardware	105.52	5,005	38,063	50.4%
Al-Rajhi Co. for Cooperative Ins.	26.20	5,075	155,654	45.6%

YTD-15 Worst Return Performers	Price (SAR)	YTD Val (SAR Mn)	YTD Vol ('000 Shrs)	YTD-15 Return
Middle East Specialised Cables	11.49	11,290	605,801	(47.5%)
SALAMA Cooperative Insurance Company	15.02	1,758	70,930	(46.0%)
Solidarity Saudi Takaful co.	11.62	7,029	367,279	(43.1%)
Al-Etihad Etisalat Co.	26.26	36,604	947,175	(40.7%)
Alinma Tokio Marine Co.	21.89	2,959	62,029	(40.7%)

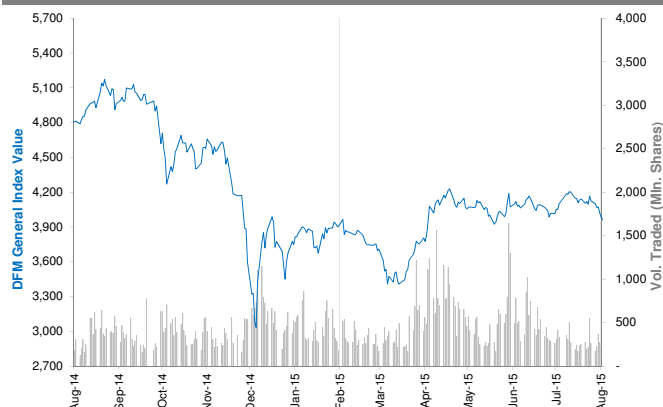
YTD-15 Most Active Stocks by Volume	Price (SAR)	YTD Val (SAR Mn)	YTD Vol ('000 Shrs)	YTD-15 Return
Dar Al Arkan Real Estate Dev. Co.	8.01	59,570	6,346,295	(1.2%)
Alinma Bank	19.97	106,544	4,688,476	(1.5%)
Saudi Kayan	9.60	25,129	2,057,326	(11.9%)
ZAIN KSA	10.85	18,740	1,989,158	(9.1%)
Emaar The Economic City	11.63	18,608	1,264,814	(2.5%)

YTD-15 Return: Is a total return which accounts in addition to the change in price the cash & share dividends announced during the year.

## Dubai Financial Market Daily Report

August 18, 2015

### Index Performance relative to Volume



### Top 10 Stocks by Market Capitalization

	Market Cap (AED Mn)	P/E (X)	ROE* (%)
1- Emirates NBD	55,578	9.6	12.5%
2- EMAAR Properties	52,409	13.6	10.8%
3- EMAAR MALLS GROUP	39,303	22.0	12.6%
4- Dubai Islamic Bank	28,941	10.1	15.7%
5- Emirates Integrated Telecom. (DU)	24,137	11.5	28.4%
6- Mashreq Bank	19,782	8.0	15.4%
7- DAMAC Properties Dubai	19,611	4.4	66.4%
8- Commercial Bank of Dubai	14,798	12.2	16.1%
9- Dubai Financial Market	14,160	23.1	7.8%
10- Arabtec Holding P.J.S.C.	9,494	NM	NM
<b>Subtotal</b>	<b>294,710</b>	<b>11.41</b>	<b>14.2%</b>

\* ROE is based on TTM 1Q-2015 Net Profit & Shareholders' Equity as of 31-March-15

### Today's Top Movers and Most Active Stocks

Best Return Performers	Price (AED)	Daily Return	Value Traded (AED)
Arabtec Holding P.J.S.C.	2.160	2.4%	57,524,469
Ajman Bank	1.920	2.1%	27,360
Gulf Navigation Holding	0.430	1.9%	4,150,481
Amlak Finance	2.170	1.9%	40,146,523
Islamic Arab Insurance Co.	0.559	1.5%	8,235,026

Worst Return Performers	Price (AED)	Daily Return	Value Traded (AED)
Takaful House	0.578	(4.8%)	97,175
SHUAA Capital	0.570	(3.1%)	1,477,138
Ekttitab Holding Co.	0.499	(2.5%)	64,895
Hits Telecom Holding Co.	0.390	(2.5%)	2,580,773
Takaful Emarat	1.750	(1.7%)	33,636

Most Active Stocks by Volume	Price (AED)	Daily Return	Volume Traded ('000 Shrs)
Arabtec Holding P.J.S.C.	2.160	2.4%	26,481
Gulf Finance House	0.716	0.8%	20,976
Amlak Finance	2.170	1.9%	18,337
Dubai Parks And Resorts	1.190	(1.7%)	17,444
EMAAR Properties	7.320	(0.9%)	16,990

Source: KAMCO Research

### Sectors' Return & Valuation Multiples

	Market Cap. (AED Mn)	MTD % Chg	P/E (X)	P/BV (X)	Yield (%)
Dubai Financial Market	370,709	(4.0%)	12.2	1.4	2.3%
Banking	136,292	(3.0%)	10.4	1.3	3.1%
Consumer Staples	10,706	(5.7%)	NM	1.4	0.7%
Investment & Financial	28,604	(7.9%)	13.2	1.3	3.6%
Insurance	5,960	(3.5%)	7.7	0.6	6.2%
Industrial	4,575	3.1%	36.3	0.6	2.0%
Real Estate & Construction	129,586	(5.1%)	NM	1.7	0.9%
Telecommunication	24,418	(1.9%)	11.6	2.9	3.7%
Transportation	27,708	(1.8%)	30.5	1.5	2.3%
Services	2,860	(8.1%)	2.8	0.4	1.3%

Sectors' MTD Return is based on the Change in market cap. and it might not conform with the benchmark return for each sector

Market Breadth	▲ 10 ▼ 18 = 32
----------------	----------------

### Market Return, Volatility & Trading Indicators

Market Return	Closing Value	DTD Chg	DTD % Chg	MTD % Chg	YTD-15 % Chg
DFM General Index	3,926.86	(3.6)	(0.1%)	(5.2%)	4.1%
Market Cap (AED Mn)	370,709	(672)	(0.2%)	(4.0%)	10.6%

Benchmark Volatility**	Volatility Since:				
	Jan-2014	Jan-2013	Jan-2012	Jan-2011	Jan-2010
DFM General Index	32.9%	29.9%	26.9%	25.2%	24.5%

\*\* Annualized Standard Deviation of Daily Returns

Trading Indicators	Today's Value	DTD Chg	DTD % Chg	Average Daily YTD-15	YTD-14
Volume (Mn Shares)	199	37.9	23.6%	467	762
Value Traded (AED Mn)	403	145.8	56.8%	739	1,764
No. of Trades	4,882	1,124	29.9%	7,128	10,734

### YTD-2015 Top Movers and Most Active Stocks

YTD-15 Best Return Performers	Price (AED)	Value Traded (AED '000)	Volume ('000 Shrs)	YTD-15 Return
Takaful Emarat	1.750	187,066	142,788	118.8%
Amlak Finance	2.170	11,344,723	5,081,890	112.7%
Al-Madina for Finance & Investment	0.706	222,613	410,950	95.6%
Dubai Parks And Resorts	1.190	4,804,344	4,776,814	63.0%
United Kaipara Dairies Co.	7.910	12	1	52.1%

YTD-15 Worst Return Performers	Price (AED)	Value Traded (AED '000)	Volume ('000 Shrs)	YTD-15 Return
Gulf Navigation Holding	0.430	636,378	1,721,226	(209.7%)
Int'l Financial Advisors Co.	0.524	3,293	6,483	(38.4%)
Ajman Bank	1.920	284,610	125,956	(28.0%)
Arabtec Holding P.J.S.C.	2.160	15,489,484	5,554,871	(26.3%)
National Cement Co.	3.390	53,622	13,022	(24.7%)

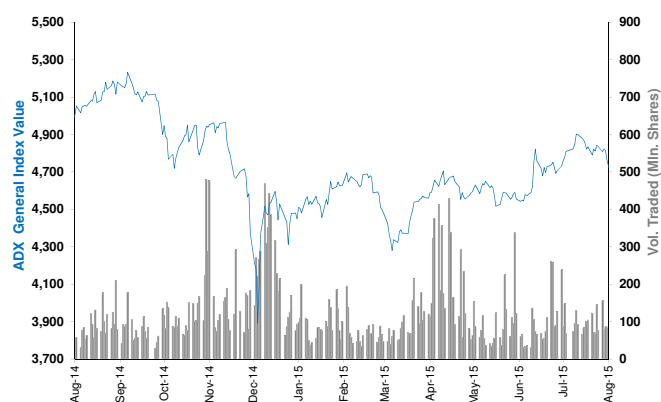
YTD-15 Most Active Stocks by Volume	Price (AED)	Value Traded (AED '000)	Volume ('000 Shrs)	YTD-15 Return
Gulf Finance House	0.716	9,980,731	19,653,659	(4.2%)
Union Properties	1.070	8,796,268	7,123,757	(7.1%)
Arabtec Holding P.J.S.C.	2.160	15,489,484	5,554,871	(26.3%)
Amlak Finance	2.170	11,344,723	5,081,890	112.7%
Deyaar Development	0.760	4,081,125	4,959,414	(10.6%)

YTD-15 Return: Is a total return which accounts in addition to the change in price the cash & share dividends announced during the year.

## Abu Dhabi Securities Exchange Daily Report

August 18, 2015

### Index Performance relative to Volume



### Top 10 Stocks by Market Capitalization

	Market Cap. (AED Mn)	P/E (X)	ROE* (%)
1- Emirates Telecom. Co.	117,406	13.0	22.5%
2- First Gulf Bank	65,250	11.4	18.2%
3- National Bank Of Abu Dhabi	48,308	8.6	14.9%
4- Abu Dhabi Commercial Bank	46,723	10.8	17.1%
5- AL DAR Properties Co.	19,106	8.0	13.3%
6- Union National Bank	18,022	8.6	12.6%
7- Abu Dhabi Islamic Bank	14,851	8.3	12.7%
8- National Bank of Ras Al-Khaimah	12,404	8.4	19.8%
9- United Arab Bank	6,417	10.6	20.6%
10- National Bank of Fujairah	5,126	9.5	13.8%
<b>Subtotal</b>	<b>353,613</b>	<b>10.51</b>	<b>17.0%</b>

\* ROE is based on TTM 1Q-2015 Net Profit & Shareholders' Equity as of 31-March-15

### Today's Top Movers and Most Active Stocks

Best Return Performers	Price (AED)	Daily Return	Value (AED)
Arkan Building Materials Co.	1.10	7.8%	22,980
AGTHIA Group	7.80	2.6%	461,868
Ras Al Khaimah Cement Co.	0.91	2.2%	327,961
Gulf Cement Co.	1.02	2.0%	25,500
Abu Dhabi Ship Building Co.	3.80	1.3%	112,541

Worst Return Performers	Price (AED)	Daily Return	Value (AED)
Abu Dhabi National Insurance Co.	4.80	(9.4%)	28,800
Gulf Pharmaceutical Co.	2.61	(4.4%)	80,532
First Gulf Bank	14.50	(2.0%)	37,078,253
Abu Dhabi Islamic Bank	4.95	(2.0%)	1,527,369
AL DAR Properties Co.	2.43	(1.6%)	37,738,703

Most Active Stocks by Volume	Price (AED)	Daily Return	Volume ('000 Shrs)
AL DAR Properties Co.	2.43	(1.6%)	15,396
Dana Gas	0.55	0.0%	14,459
Eshraq Properties Co.	0.72	(1.4%)	6,019
Methaq Takaful Insurance Co.	1.10	(0.9%)	5,164
Ras Al Khaimah Properties	0.62	(1.6%)	2,720

Source: KAMCO Research

### Sectors' Return & Valuation Multiples

	Market Cap. (AED Mn)	MTD % Chg	P/E (X)	P/BV (X)	Dividend Yield (%)
ADX	454,442	(3.6%)	8.5	1.4	4.1%
Banks	236,718	(3.7%)	10.0	1.5	4.6%
Inv. & Financial Services	4,757	(4.7%)	0.3	1.3	12.0%
Real Estate	22,020	(9.4%)	11.3	0.9	0.8%
Energy	7,739	(1.6%)	NM	0.5	3.7%
Consumer Staples	6,041	0.3%	18.7	2.0	1.4%
Industrial	12,747	3.2%	24.7	0.9	4.5%
Insurance	8,709	(2.7%)	NM	0.5	4.4%
Telecommunication	145,275	(3.8%)	13.3	2.3	3.8%
Services	10,437	1.8%	14.1	0.7	3.4%

Sectors' MTD Return is based on the Change in market cap. and it might not conform with the benchmark return for each sector

Market Breadth	7	12	46
----------------	---	----	----

### Market Return, Volatility & Trading Indicators

Market Return	Closing Value	DTD Chg	DTD % Chg	MTD % Chg	YTD-15 % Chg
ADX General Index	4,631.31	(39.58)	(0.8%)	(4.2%)	2.3%
Market Cap (AED Mn)	454,442	(2,257)	(0.5%)	(3.6%)	(2.0%)

Benchmark Volatility**	Volatility Since:				
	Jan-2014	Jan-2013	Jan-2012	Jan-2011	Jan-2010
ADX General Index	19.1%	15.9%	13.5%	12.7%	12.1%

\*\* Annualized Standard Deviation of Daily Returns

Trading Indicators	Today's Value	DTD Chg	DTD % Chg	Average Daily YTD-15	YTD-14
Volume (Mn Shares)	56	(65.3)	(53.8%)	108	281.8
Value Traded (AED Mn)	147	(9.3)	(6.0%)	224	722.5
No. of Trades	1,445	6	0.4%	1,794	3,968

### YTD-2015 Top Movers and Most Active Stocks

YTD-15 Best Return Performers	Price (AED)	YTD-Val ('000 AED)	Volume ('000 Shrs)	YTD-15 Return
Abu Dhabi Ship Building Co.	3.80	37,279	14,982	100.0%
Methaq Takaful Insurance Co.	1.10	426,505	435,989	50.7%
Fujairah Building Industrial Co.	1.90	674	476	40.9%
Gulf Medical Projects	2.80	1,186	458	40.0%
Emirates Telecom. Co.	13.50	3,912,631	319,803	35.6%

YTD-15 Worst Return Performers	Price (AED)	YTD-Val ('000 AED)	Volume ('000 Shrs)	YTD-15 Return
Ooredoo	84.65	3,905	37	(41.0%)
Al Dhafra Insurance Co.	4.80	351	61	(37.7%)
Abu Dhabi National Hotels	2.85	39,024	13,746	(28.8%)
National Bank Of Abu Dhabi	10.20	1,026,407	87,398	(27.1%)
Abu Dhabi National Co. for Bldg. Materials	0.61	27,629	42,524	(23.8%)

YTD-15 Most Active Stocks by Volume	Price (AED)	YTD-Val ('000 AED)	Volume ('000 Shrs)	YTD-15 Return
Eshraq Properties Co.	0.72	5,211,081	6,060,954	(0.0%)
Dana Gas	0.55	1,720,146	3,289,914	10.0%
AL DAR Properties Co.	2.43	7,658,506	2,894,341	(8.3%)
Ras Al Khaimah Properties	0.62	1,143,939	1,590,185	(16.2%)
Waha Capital Co.	2.36	1,575,565	557,547	(16.3%)

YTD-15 Return: Is a total return which accounts in addition to the change in price the cash & share dividends announced during the year.

## Qatar Exchange Daily Report

August 18, 2015

### Index Performance relative to Volume



### Sectors' Return & Valuation Multiples

	Market Cap. (QAR Mn)	MTD % Chg	P/E (X)	P/B (X)	Yield (%)
<b>Qatar Exchange</b>	<b>618,927</b>	<b>(1.1%)</b>	<b>13.7</b>	<b>2.1</b>	<b>4.2%</b>
<b>Banking &amp; Finance</b>	<b>249,124</b>	<b>(0.5%)</b>	<b>12.6</b>	<b>2.2</b>	<b>4.4%</b>
<b>Goods &amp; Consumer Services</b>	<b>27,977</b>	<b>(3.7%)</b>	<b>14.8</b>	<b>2.4</b>	<b>4.5%</b>
<b>Industrial</b>	<b>173,833</b>	<b>(2.1%)</b>	<b>17.6</b>	<b>3.2</b>	<b>4.3%</b>
<b>Insurance</b>	<b>25,735</b>	<b>1.1%</b>	<b>13.7</b>	<b>1.9</b>	<b>2.9%</b>
<b>Real Estate</b>	<b>77,659</b>	<b>1.0%</b>	<b>9.8</b>	<b>1.3</b>	<b>3.1%</b>
<b>Telecom</b>	<b>37,589</b>	<b>(3.9%)</b>	<b>20.4</b>	<b>1.4</b>	<b>3.9%</b>
<b>Transport</b>	<b>27,010</b>	<b>(0.9%)</b>	<b>12.7</b>	<b>1.6</b>	<b>5.1%</b>

Sectors' MTD Return is based on the Change in market cap. and it might not conform with the benchmark return for each sector

### Market Breadth

▲ 7 ▼ 32 = 4

### Top 10 Stocks by Market Capitalization

	Market Cap. (QAR Mn)	P/E (X)	ROE* (%)
<b>1- Qatar National Bank</b>	<b>125,112</b>	<b>11.7</b>	<b>20.0%</b>
<b>2- Industries Qatar</b>	<b>80,526</b>	<b>14.1</b>	<b>18.8%</b>
<b>3- Ezdan Holding Group Co.</b>	<b>48,169</b>	<b>33.9</b>	<b>4.8%</b>
<b>4- Masraf Al Rayan</b>	<b>33,300</b>	<b>16.0</b>	<b>19.7%</b>
<b>5- Mesaieed Petrochemical Holding Co.</b>	<b>28,518</b>	<b>19.7</b>	<b>10.9%</b>
<b>6- Qatar Islamic Bank</b>	<b>26,110</b>	<b>15.7</b>	<b>14.0%</b>
<b>7- Ooredoo (formerly Q-Tel)</b>	<b>24,857</b>	<b>14.2</b>	<b>8.3%</b>
<b>8- Qatar Electricity &amp; Water Co.</b>	<b>23,771</b>	<b>15.1</b>	<b>25.4%</b>
<b>9- Commercial Bank of Qatar</b>	<b>19,304</b>	<b>10.7</b>	<b>12.6%</b>
<b>10- Barwa Real Estate Co.</b>	<b>18,659</b>	<b>3.2</b>	<b>32.1%</b>

**Subtotal** 428,325 11.21 18.9%

\* ROE is based on TTM 1Q-2015 Net Profit & Shareholders' Equity as of 31-March-15

### Today's Top Movers and Most Active Stocks

Best Return Performers	Price (QAR)	Daily Return	Value (QAR)
<b>Qatar General Insurance &amp; Reins. Co.</b>	<b>56.00</b>	<b>3.3%</b>	6,694
<b>Qatar National Cement</b>	<b>119.00</b>	<b>1.7%</b>	368,896
<b>Al Khaleej Commercial Bank</b>	<b>22.39</b>	<b>1.0%</b>	255,120
<b>Qatar Industrial Manufacturing Co.</b>	<b>45.50</b>	<b>0.8%</b>	34,125
<b>Islamic Holding Group</b>	<b>125.50</b>	<b>0.6%</b>	498,953

Worst Return Performers	Price (QAR)	Daily Return	Value (QAR)
<b>Gulf Warehousing Co.</b>	<b>73.00</b>	<b>(3.9%)</b>	1,413,028
<b>Zad Holding Co.</b>	<b>95.00</b>	<b>(3.1%)</b>	81,225
<b>Barwa Real Estate Co.</b>	<b>47.95</b>	<b>(2.1%)</b>	9,936,012
<b>Qatar Islamic Insurance</b>	<b>79.50</b>	<b>(2.1%)</b>	47,800
<b>Ooredoo</b>	<b>77.60</b>	<b>(1.9%)</b>	8,132,693

Most Active Stocks by Volume	Price (QAR)	Daily Return	Volume (Shares)
<b>Ezdan Holding Group Co.</b>	<b>18.16</b>	<b>(1.0%)</b>	757,884
<b>Qatar Gas Transport Co.</b>	<b>21.99</b>	<b>0.2%</b>	491,530
<b>The Commercial Bank of Qatar</b>	<b>59.10</b>	<b>0.2%</b>	308,545
<b>Masraf Al Rayan</b>	<b>44.40</b>	<b>(0.4%)</b>	278,115
<b>Barwa Real Estate Co.</b>	<b>47.95</b>	<b>(2.1%)</b>	206,141

Source: KAMCO Research

### Market Return, Volatility & Trading Indicators

Market Return	Closing Value	DTD Chg	DTD % Chg	MTD % Chg	YTD-15 % Chg
<b>QE 20 Index</b>	<b>11,734.69</b>	<b>(109.74)</b>	<b>(0.9%)</b>	<b>(0.4%)</b>	<b>(4.5%)</b>
<b>Market Cap (QAR Mn)</b>	<b>618,927</b>	<b>(5,268)</b>	<b>(0.8%)</b>	<b>(1.1%)</b>	<b>(8.5%)</b>

Benchmark Volatility**	QE 20 Volatility Since:				
	Jan-2014	Jan-2013	Jan-2012	Jan-2011	Jan-2010
<b>QE 20 Index</b>	<b>17.2%</b>	<b>16.2%</b>	<b>14.1%</b>	<b>14.2%</b>	<b>14.3%</b>

\*\* Annualized Standard Deviation of Daily Returns

Trading Indicators	Today's Value	DTD Chg	DTD % Chg	Average Daily YTD-15	YTD-14
--------------------	------------------	------------	--------------	-------------------------	--------

<b>Volume ('000 Shares)</b>	<b>3,510</b>	<b>(944)</b>	<b>(21.2%)</b>	<b>10,241</b>	<b>19,579</b>
<b>Value Traded (QAR Mn)</b>	<b>170</b>	<b>(28)</b>	<b>(14.1%)</b>	<b>421</b>	<b>832</b>
<b>No. of Trades</b>	<b>2,650</b>	<b>(625)</b>	<b>(19.1%)</b>	<b>5,157</b>	<b>8,983</b>

### YTD-2015 Top Movers and Most Active Stocks

YTD-15 Best Return Performers	Price (QAR)	YTD Value (QAR 000's)	YTD Volume (Shares 000's)	YTD-15 Return
<b>Qatari German Co. for Medical Devices</b>	<b>15.15</b>	718,983	46,558	<b>49.3%</b>
<b>Medicare Group</b>	<b>172.00</b>	787,963	5,092	<b>47.0%</b>
<b>Al Meera Consumer Goods Co.</b>	<b>269.00</b>	778,246	3,384	<b>34.5%</b>
<b>Gulf Warehousing Co.</b>	<b>73.00</b>	453,747	6,873	<b>29.4%</b>
<b>Doha Insurance Co.</b>	<b>25.05</b>	75,852	2,873	<b>28.3%</b>

YTD-15 Worst Return Performers	Price (QAR)	YTD Value (QAR 000's)	YTD Volume (Shares 000's)	YTD-15 Return
<b>Ooredoo</b>	<b>77.60</b>	1,312,700	13,146	<b>(37.4%)</b>
<b>Diala Brokerage &amp; Inv. Hldg. Co.</b>	<b>22.55</b>	585,113	15,038	<b>(32.6%)</b>
<b>Gulf International Services</b>	<b>66.70</b>	5,340,743	60,166	<b>(31.3%)</b>
<b>Mesaieed Petrochemical Holding Co.</b>	<b>22.70</b>	858,672	32,063	<b>(23.1%)</b>
<b>Industries Qatar</b>	<b>133.10</b>	4,500,188.7	30,974.96	<b>(20.8%)</b>

YTD-15 Most Active Stocks by Vol.	Price (QAR)	YTD Value (QAR 000's)	YTD Volume (Shares 000's)	YTD-15 Return
<b>Ezdan Holding Group Co.</b>	<b>18.16</b>	6,191,099	342,065	21.7%
<b>Vodafone Qatar</b>	<b>15.06</b>	3,536,724	204,386	(8.4%)
<b>Barwa Real Estate Co.</b>	<b>47.95</b>	8,083,105	168,921	14.4%
<b>Mazaya Qatar R.E Development Co.</b>	<b>17.50</b>	1,630,381	83,689	(4.0%)
<b>Masraf Al Rayan</b>	<b>44.40</b>	3,835,114	82,795	0.5%

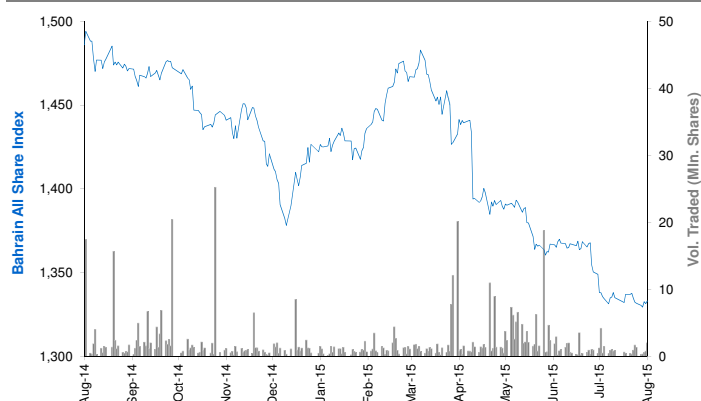
YTD-15 Return: Is a total return which accounts in addition to the change in price the cash & share dividends announced during the year.



## Bahrain Bourse Daily Report

August 18, 2015

### Index Performance relative to Volume



### Sectors' Return & Valuation Multiples

	Market Cap. (BHD Mn)	MTD % Chg	P/E (X)	P/B (X)	Yield (%)
<b>Bahrain Bourse</b>	<b>7,841</b>	<b>0.1%</b>	<b>9.7</b>	<b>1.0</b>	<b>3.6%</b>
<b>Commercial Banks</b>	<b>3,448</b>	<b>(0.2%)</b>	<b>10.6</b>	<b>1.4</b>	<b>3.6%</b>
<b>Investment</b>	<b>2,240</b>	<b>0.9%</b>	<b>9.3</b>	<b>0.7</b>	<b>3.8%</b>
<b>Insurance</b>	<b>157</b>	<b>0.3%</b>	<b>12.1</b>	<b>0.8</b>	<b>4.4%</b>
<b>Service</b>	<b>1,076</b>	<b>0.8%</b>	<b>11.3</b>	<b>1.1</b>	<b>2.2%</b>
<b>Hotel &amp; Tourism</b>	<b>208</b>	<b>0.5%</b>	<b>11.7</b>	<b>1.0</b>	<b>1.5%</b>
<b>Industrial</b>	<b>713</b>	<b>(2.0%)</b>	<b>6.1</b>	<b>0.7</b>	<b>5.5%</b>

Sectors' MTD Return is based on the Change in market cap. and it might not conform with the benchmark return for each sector

### Market Breadth

▲	1	▼	1	=	38
---	---	---	---	---	----

### Top 10 Stocks by Market Capitalization

	Market Cap. (BHD Mn)	P/E (X)	ROE* (%)
<b>1- Ahli United Bank (Price in USD)</b>	<b>1,721</b>	<b>8.97</b>	<b>15.8%</b>
<b>2- National Bank of Bahrain</b>	<b>766</b>	<b>14.23</b>	<b>14.7%</b>
<b>3- Arab Banking Corp. (Price in USD)</b>	<b>733</b>	<b>6.50</b>	<b>7.9%</b>
<b>4- Aluminum Bahrain</b>	<b>693</b>	<b>5.95</b>	<b>12.5%</b>
<b>5- Bahrain Telecommunications Co.</b>	<b>556</b>	<b>12.43</b>	<b>8.7%</b>
<b>6- Bank of Bahrain and Kuwait</b>	<b>465</b>	<b>9.13</b>	<b>14.7%</b>
<b>7- United Gulf Bank</b>	<b>325</b>	<b>NM</b>	<b>2.6%</b>
<b>8- Al Salam Bank</b>	<b>295</b>	<b>19.28</b>	<b>4.9%</b>
<b>9- Al Baraka Banking (Price in USD)</b>	<b>284</b>	<b>4.86</b>	<b>12.2%</b>
<b>10- Gulf Finance House (Price in USD)</b>	<b>256</b>	<b>52.48</b>	<b>1.8%</b>

**Subtotal** 6,094 9.33 10.9%

\* ROE is based on TTM 1Q2015 Net Profit & Shareholders' Equity as of 31-March-15

### Today's Top Movers and Most Active Stocks

Best Return Performers	Price (BHD)	Daily Return	Value (BHD)
<b>Esterad Investment Co.</b>	<b>0.204</b>	<b>2.0%</b>	9,656

Worst Return Performers	Price (BHD)	Daily Return	Value (BHD)
<b>Bahrain Islamic Bank</b>	<b>0.135</b>	<b>(2.9%)</b>	3,942

Most Active Stocks by Volume	Price (BHD)	Daily Return	Volume (Shares)
<b>Bahrain Telecommunications Co.</b>	<b>0.334</b>	0.0%	50,000
<b>Esterad Investment Co.</b>	<b>0.204</b>	2.0%	47,333
<b>AlKhaleeji Commercial Bank</b>	<b>0.064</b>	0.0%	40,000
<b>Bahrain Islamic Bank</b>	<b>0.135</b>	(2.9%)	29,200
<b>ITHMAR Bank (USD)</b>	<b>0.140</b>	0.0%	22,000

Source: KAMCO Research

### Market Return, Volatility & Trading Indicators

Market Return	Closing Value	DTD Chg	DTD % Chg	MTD % Chg	YTD-15 % Chg
<b>Bahrain All Share Index</b>	<b>1,331.56</b>	<b>(0.55)</b>	<b>(0.0%)</b>	<b>(0.0%)</b>	<b>(6.7%)</b>
<b>Market Cap (BHD Mln)</b>	<b>7,841.36</b>	<b>2.56</b>	<b>0.0%</b>	<b>0.1%</b>	<b>(3.1%)</b>

Benchmark Volatility**	Volatility Since:				
	Jan-2014	Jan-2013	Jan-2012	Jan-2011	Jan-2010
<b>Bahrain All Share Index</b>	<b>7.09%</b>	<b>6.9%</b>	<b>6.8%</b>	<b>7.3%</b>	<b>7.8%</b>

\*\* Annualized Standard Deviation of Daily Returns

Trading Indicators	Today's Value	DTD Chg	DTD % Chg	Average Daily YTD-15	YTD-14
<b>Volume ('000 Shares)</b>	<b>208</b>	<b>(1,098)</b>	<b>(84.1%)</b>	<b>1,792</b>	<b>5,859</b>
<b>Value Traded (BHD '000)</b>	<b>39</b>	<b>(150)</b>	<b>(79.2%)</b>	<b>398</b>	<b>1,368</b>
<b>No. of Trades</b>	<b>18</b>	<b>(11)</b>	<b>(37.9%)</b>	<b>47</b>	<b>79</b>

### YTD-2015 Top Movers and Most Active Stocks

YTD-15 Best Return Performers	Price (BHD)	YTD-Val (BHD '000)	YTD Vol (Shares)	YTD-15 Return
<b>AlKhaleeji Commercial Bank</b>	<b>0.064</b>	4,382	73,999,907	<b>48.8%</b>
<b>BANADER Co. For Hotels</b>	<b>0.077</b>	27	404,077	<b>37.5%</b>
<b>Al Salam Bank</b>	<b>0.138</b>	3,433	25,926,025	<b>37.0%</b>
<b>Al-Ahlia Insurance Co.</b>	<b>0.330</b>	977	2,965,587	<b>22.2%</b>
<b>Gulf Finance House (USD)</b>	<b>0.215</b>	117	1,302,389	<b>21.9%</b>

YTD-15 Worst Return Performers	Price (BHD)	YTD-Val (BHD '000)	YTD Vol (Shares)	YTD-15 Return
<b>Takaful International Co.</b>	<b>0.100</b>	2,502	26,054,619	<b>(31.0%)</b>
<b>United Gulf Investment Corporation</b>	<b>0.100</b>	10.0	99,114	<b>(24.8%)</b>
<b>Bank of Bahrain and Kuwait</b>	<b>0.430</b>	8,223	18,694,479	<b>(16.8%)</b>
<b>Al Baraka Banking Group (USD)</b>	<b>0.675</b>	968	3,593,853	<b>(14.5%)</b>
<b>Inovest BSC. (USD)</b>	<b>0.180</b>	108	1,587,356	<b>(14.3%)</b>

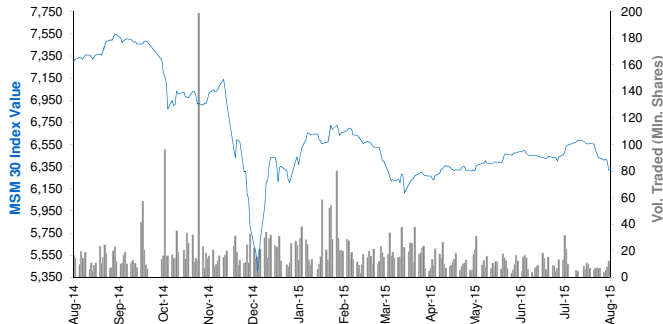
YTD-15 Most Active Stocks by Volume	Price (BHD)	YTD-Val (BHD '000)	YTD Vol (Shares)	YTD-15 Return
<b>AlKhaleeji Commercial Bank</b>	<b>0.064</b>	4,382	73,999,907	48.8%
<b>Ahli United Bank (USD)</b>	<b>0.710</b>	18,298	63,258,572	<b>(4.3%)</b>
<b>Takaful International Co.</b>	<b>0.100</b>	2,502	26,054,619	<b>(31.0%)</b>
<b>Al Salam Bank</b>	<b>0.138</b>	3,433	25,926,025	37.0%
<b>Bank of Bahrain and Kuwait</b>	<b>0.430</b>	8,223	18,694,479	<b>(16.8%)</b>

YTD-15 Return: Is a total return which accounts in addition to the change in price the cash & share dividends announced during the year.

## Muscat Securities Market Daily Report

August 18, 2015

### Index Performance relative to Volume



### Sectors' Return & Valuation Multiples

	Market Cap. (OMR Mn)	MTD % Chg	P/E (X)	P/B (X)	Yield (%)
Muscat Securities Mkt	7,937	(4.3%)	10.40	1.47	4.0%
Financial	3,479	(5.8%)	8.53	1.03	3.7%
Industrial	1,060	(4.6%)	11.89	1.68	4.8%
Services	3,398	(2.5%)	12.79	2.41	3.9%

Sectors' MTD Return is based on the Change in market cap. and it might not conform with the benchmark return for each sector

Market Breadth	▲	4	▼	30	=	26
----------------	---	---	---	----	---	----

### Top 10 Stocks by Market Capitalization

	Market Cap. (OMR Mn)	P/E (X)	ROE* (%)
1- Oman Telecom Co.	1,286	10.49	22.3%
2- Bank Muscat	1,178	7.06	13.2%
3- Ooredoo	495	12.45	21.5%
4- National Bank of Oman	442	8.41	14.9%
5- Bank Dhofar	417	9.93	12.7%
6- Ahli Bank	294	11.44	15.5%
7- Raysut Cement	277	10.98	19.0%
8- HSBC Bank Oman	258	20.01	4.3%
9- Sembcorp Salalah	247	34.49	9.6%
10- Bank Sohar	227	7.95	14.7%
Subtotal	5,323	9.94	15.0%

\* ROE is based on TTM 1Q2015 Net Profit & Shareholders' Equity as of 31-March-15

### Today's Top Movers and Most Active Stocks

Best Return Performers	Price (OMR)	Daily Return	Value (OMR)
United Power	2.375	10.0%	23,870
Sharqiyah Desalination	4.200	2.4%	2,310
Al Batinah power	0.222	0.9%	23,810
Shell Oman Marketing	2.020	0.2%	15,190

Worst Return Performers	Price (OMR)	Daily Return	Value (OMR)
Galfar Engineering	0.104	(3.7%)	131,380
Al Madina Investment company	0.063	(3.1%)	10,130
Oman Investment & Finance Co.	0.193	(3.0%)	62,030
National Bank of Oman	0.330	(2.9%)	33,000
Raysut Cement	1.385	(2.5%)	141,190

Most Active Stocks by Volume	Price (OMR)	Daily Return	Volume (Shares)
Galfar Engineering	0.104	(3.7%)	1,261,935
Al Anwar Holding	0.204	(1.9%)	864,090
Oman & Emirates Investment	0.111	(0.9%)	688,905
Al Anwar Ceramic Tiles Co.	0.388	(0.5%)	665,890
Oman Cement Co.	0.500	(2.0%)	450,030

Source: KAMCO Research

### Market Return, Volatility & Trading Indicators

Market Return	Closing Value	DTD Chg	DTD % Chg	MTD % Chg	YTD-15 % Chg
MSM 30 Index	6,219.77	(72.57)	(1.2%)	(5.2%)	(1.9%)
Market Cap (OMR Mn)	7,936.96	(72.15)	(0.9%)	(4.3%)	2.6%

Benchmark Volatility**	Volatility Since:				
	Jan-2014	Jan-2013	Jan-2012	Jan-2011	Jan-2010
MSM 30 Index	13.6%	11.9%	10.9%	11.2%	10.8%

\*\* Annualized Standard Deviation of Daily Returns

Trading Indicators	Today's Value	DTD Chg	DTD % Chg	Average Daily YTD-15	YTD-14
Volume ('000 Shares)	7,447	3,143	73.0%	15,213	21,967
Value Traded (OMR '000)	2,902	216	8.0%	4,608	8,364
No. of Trades	646	186	40.3%	850	1,291

### YTD-2015 Top Movers and Most Active Stocks

YTD-15 Best Return Performers	Price (OMR)	YTD-Value (OMR 000's)	YTD Vol. (Shares 000's)	YTD-15 Return
United Power	2.375	353	196	79.2%
Gulf International Chemicals	0.259	11,032	46,372	70.4%
ONIC. Holding	0.470	7,882	19,075	48.7%
Al Batinah power	0.222	2,896	14,213	29.8%
Al Suwadi Power	2.230	3,346	16,466	29.2%

YTD-15 Worst Return Performers	Price (OMR)	YTD-Value (OMR 000's)	YTD Volume (Shares 000's)	YTD-15 Return
Renaissance Services	0.220	14,153	35,622	(53.6%)
Port Services Corporation	0.180	486	1,796	(49.2%)
Galfar Engineering	0.104	15,536	104,670	(35.4%)
Al Jazeera Steel Products Co.	0.225	3,147	10,836	(33.0%)
National Gas Co.	0.104	3,077	7,001	(31.8%)

YTD-15 Most Active Stocks by Volume	Price (OMR)	YTD-Value (OMR 000's)	YTD Volume (Shares 000's)	YTD-15 Return
Al Anwar Holding	0.204	127,930	507,023	22.8%
Gulf Investment Services	0.117	32,185	199,775	(17.6%)
Bank Muscat	0.514	109,934	197,380	(7.3%)
Oman & Emirates Investment	0.111	24,752	196,588	(9.8%)
Global Financial Investment Co.	0.119	17,581	150,936	(2.5%)

YTD-15 Return: Is a total return which accounts in addition to the change in price the cash & share dividends announced during the year.

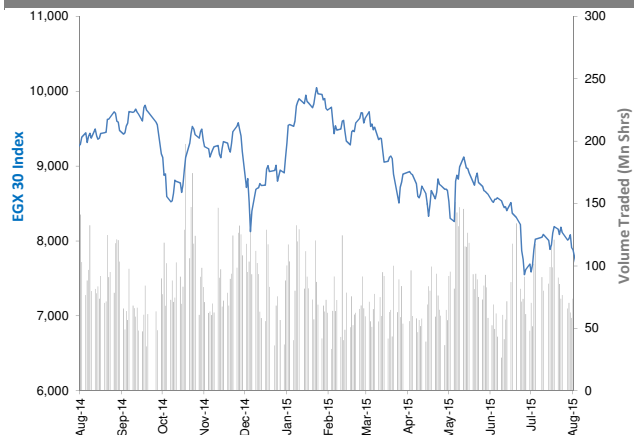


## The Egyptian Exchange Daily Report

(The bulletin covers the top 60 companies by Mkt. Cap out of 336 listed companies)

August 18, 2015

### Index Performance relative to Volume



### Sectors' Return & Valuation Multiples

	Market Cap. (EGP Mn)	MTD % Chg	P/E (X)	P/BV (X)	Yield (%)
The Egyptian Exchange	317,193	(5.2%)	16.1	1.3	2.4%
Banking & Finance	74,523	(4.9%)	9.6	2.1	2.1%
Basic Resources	14,168	(0.1%)	NM	1.5	4.1%
Chemical	20,599	(2.9%)	8.2	3.0	4.3%
Construction & Material	71,311	(6.2%)	16.6	0.7	3.2%
Financial Services	17,934	(9.4%)	35.0	0.8	1.8%
Food & Beverage	7,271	(3.3%)	20.1	2.0	3.3%
Healthcare & Pharma.	6,902	7.1%	21.5	3.6	0.0%
Ind. Goods, Services, Auto.	12,398	(4.8%)	20.2	1.5	1.8%
Media	540	6.3%	17.2	0.3	0.0%
Oil & Gas	3,100	(5.3%)	4.3	1.1	19.4%
Personal & Household	16,816	(2.1%)	14.0	1.5	0.0%
Real Estate	32,335	(9.5%)	19.1	0.9	0.9%
Telecommunication	35,069	(6.8%)	29.9	1.3	2.7%
Travel & Leisure	4,226	(0.0%)	22.5	1.2	0.0%

Sectors' MTD Return is based on the Change in market cap. and it might not conform with the benchmark return for each sector

### Top 10 Stocks by Market Capitalization

	Market Cap. (EGP Mn)	P/E (X)	ROE* (%)
1-Orascom Construction Industries (OCI)	53,446	NM	NM
2-Commercial Int'l Bank (Egypt)	46,953	12.5	25.4%
3-Qatar National Bank AlAhli	17,076	7.4	19.5%
4-T M G Holding	15,477	22.7	2.6%
5-ABU Qir Fertilizers & Chemical ind. Co.	13,481	9.5	42.5%
6-Global Telecom Hldg.	11,908	NM	NM
7-EASTERN CO	10,750	11.8	18.8%
8-Elswedy Cables	10,166	25.2	7.6%
9-MobiNil	10,000	NM	NM
10-Egyptian International Pharmaceutical	6,902	21.5	16.6%
<b>Subtotal</b>	<b>142,712</b>	<b>15.98</b>	<b>11.4%</b>

\*: ROE is based on Net Profit for the Period FY-14 & Shareholders' Equity as of 31-December-14

### Today's Top Movers and Most Active Stocks

Best Return Performers	Last Price (EGP)	Daily Return
El Ahli Investment and Development	7.00	7.0%
Medinet Nasr Housing	22.00	5.1%
Alexandria Spinning & Weaving (SPINALEX)	0.90	4.7%
Orascom Hotels & Development	9.95	4.6%
Qatar National Bank AlAhli	35.00	4.5%

Worst Return Performers	Last Price (EGP)	Daily Return
Orascom Construction Industries (OCI)	255.80	(10.0%)
Delta Sugar Co.	10.04	(4.4%)
EASTERN CO	215.00	(3.6%)
Oriental Weavers Carpet	10.20	(2.9%)
Egyptian Kuwaiti Holding	0.61	(1.6%)

Most Active Stocks By Volume	Last Price (EGP)	Volume ('000 Shrs)
Amer Group Holding	0.96	49,055
Egyptian Resorts Co.	1.09	17,332
Palm Hills Developments	2.27	16,221
Arab Cotton Ginning	2.89	4,342
Citadel Capital	1.78	3,617

Source: KAMCO Research

### Market Return, Volatility & Trading Indicators

Market Return	Closing Value	DTD Chg	DTD % Chg	MTD % Chg	YTD-15 % Chg
EGX 30 Index	7,594.89	(30.87)	(0.4%)	(7.3%)	(14.9%)
Market Cap (EGP Mn)	317,193	1,382	0.5%	(5.2%)	(18.2%)

Benchmark Volatility**	Since Jan-14	Since Jan-13	Since Jan-12	Since Jan-11	Since Jan-10
EGX 30 Index	21%	21%	24%	25%	26%

\*\*: Annualized Standard Deviation of Daily Returns

Trading Indicators	Today's Value	DTD Chg	DTD % Chg	Average Daily YTD-15	YTD-14
Volume (Mn Shares)	111	19.44	21.2%	78	130
Value Traded (EGP Mn)	304	80.1	35.8%	369	560
No. of Trades	9,980	566	6.0%	11,563	16,261

Market Breadth	▲ 38	▼ 12	= 10
----------------	------	------	------

### YTD-2015 Top Movers and Most Active Stocks

YTD-15 Best Return Performers	Last Price (EGP)	Volume ('000 Shrs)	YTD-15 Return
Misr Cement Co.	85.01	8,182	19.1%
Credit Agricole Egypt	23.50	24,305	18.8%
Qatar National Bank AlAhli	35.00	2,573	12.9%
Egyptian Int'l Pharmaceutical	87.00	2,748	10.8%
El Kahera Housing	11.35	17,857	10.1%

YTD-15 Worst Return Performers	Last Price (EGP)	Volume ('000 Shrs)	YTD-15 Return
GB AUTO S.A.E	3.42	32,149	(89.0%)
Orascom Hotels & Development	9.95	16,826	(48.8%)
Palm Hills Developments	2.27	1,040,903	(44.8%)
Global Telecom Hldg. (Orascom Telecom)	2.27	1,073,123	(42.8%)
Asec Company for Mining - Ascom	6.87	4,391	(41.8%)

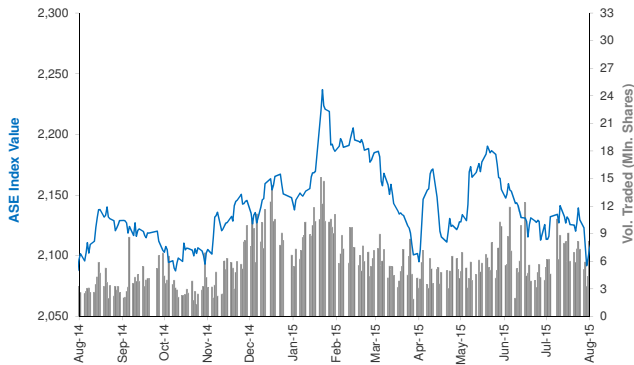
YTD-15 Most Active Stocks by Volume	Last Price (EGP)	Volume ('000 Shrs)	YTD-15 Return
Amer Group Holding	0.96	3,587,172	(25.00%)
Citadel Capital	1.78	1,555,432	(37.98%)
Global Telecom Hldg. (Orascom Telecom)	2.27	1,073,123	(42.82%)
Palm Hills Developments	2.27	1,040,903	(44.77%)
Egyptian Resorts Co.	1.09	999,981	(10.66%)

YTD-15 Return: Is a total return which accounts in addition to the change in price the cash & share dividends announced during the year.

## Amman Stock Exchange Daily Report (1st Market)

August 18, 2015

### Index Performance relative to Volume



### Sectors' Return & Valuation Multiples

	Market Cap. (JD Mn)	MTD % Chg	P/E (X)	P/BV (X)	Yield (%)
<b>Amman Stock Exchange</b>	<b>13,679</b>	<b>2.3%</b>	<b>12.6</b>	<b>0.9</b>	<b>5.2%</b>
<b>Banks</b>	<b>9,790</b>	<b>0.0%</b>	<b>9.4</b>	<b>0.8</b>	<b>4.9%</b>
<b>Insurance</b>	<b>96</b>	<b>0.3%</b>	<b>NM</b>	<b>0.8</b>	<b>3.3%</b>
<b>Diversified Financial Services</b>	<b>200</b>	<b>2.2%</b>	<b>NM</b>	<b>0.5</b>	<b>1.1%</b>
<b>Real Estate</b>	<b>286</b>	<b>3.1%</b>	<b>NM</b>	<b>0.8</b>	<b>0.2%</b>
<b>Educational Services</b>	<b>317</b>	<b>0.2%</b>	<b>12.0</b>	<b>2.0</b>	<b>14.7%</b>
<b>Hotels and Tourism</b>	<b>136</b>	<b>0.6%</b>	<b>23.3</b>	<b>0.6</b>	<b>55.4%</b>
<b>Transportation</b>	<b>99</b>	<b>(0.8%)</b>	<b>NM</b>	<b>1.6</b>	<b>2.2%</b>
<b>Technology &amp; Commun.</b>	<b>693</b>	<b>(8.0%)</b>	<b>17.3</b>	<b>1.9</b>	<b>6.1%</b>
<b>Media</b>	<b>12</b>	<b>(6.8%)</b>	<b>NM</b>	<b>0.3</b>	<b>0.0%</b>
<b>Utilities &amp; Energy</b>	<b>605</b>	<b>(3.1%)</b>	<b>14.6</b>	<b>2.4</b>	<b>3.6%</b>
<b>Pharmaceutical &amp; Medical Ind.</b>	<b>107</b>	<b>4.9%</b>	<b>NM</b>	<b>0.7</b>	<b>2.9%</b>
<b>Tobacco &amp; Cigarettes</b>	<b>343</b>	<b>0.4%</b>	<b>13.0</b>	<b>3.4</b>	<b>5.8%</b>
<b>Mining &amp; Extraction Industries</b>	<b>583</b>	<b>(1.2%)</b>	<b>30.7</b>	<b>0.6</b>	<b>0.2%</b>
<b>Engineering &amp; Construction</b>	<b>95</b>	<b>(3.1%)</b>	<b>29.5</b>	<b>1.3</b>	<b>3.6%</b>
<b>Textiles, Leather &amp; Cloth.</b>	<b>79</b>	<b>(1.3%)</b>	<b>19.3</b>	<b>0.9</b>	<b>5.6%</b>

Sectors' MTD Return is based on the Change in market cap. and it might not conform with the benchmark return for each sector

### Top 10 Stocks by Market Capitalization

	Market Cap. (JD Mn)	P/E (X)	ROE* (%)
<b>1-ARAB BANK</b>	<b>4,325</b>	<b>7.5</b>	<b>7.4%</b>
<b>2-HOUSING BK TRD FIN</b>	<b>2,344</b>	<b>19.5</b>	<b>12.2%</b>
<b>3-JORDAN TELECOM</b>	<b>678</b>	<b>16.1</b>	<b>11.9%</b>
<b>4-JOR ISLAMIC BANK</b>	<b>546</b>	<b>12.1</b>	<b>16.0%</b>
<b>5-JOR PHOSPHATE MN</b>	<b>442</b>	<b>22.3</b>	<b>2.6%</b>
<b>6-JOR KUWAIT BANK</b>	<b>393</b>	<b>7.9</b>	<b>11.5%</b>
<b>7-BANK OF JORDAN</b>	<b>386</b>	<b>8.2</b>	<b>14.0%</b>
<b>8-CAIRO AMMAN BANK</b>	<b>368</b>	<b>8.3</b>	<b>15.3%</b>
<b>9-JOR PETROLM REF</b>	<b>348</b>	<b>10.8</b>	<b>22.1%</b>
<b>10-EQBAL INV.CO</b>	<b>280</b>	<b>10.6</b>	<b>39.1%</b>

<b>Subtotal</b>	<b>10,109</b>	<b>10.10</b>	<b>8.8%</b>
-----------------	---------------	--------------	-------------

\* ROE is based on FY-2014 Net Profit & Shareholders' Equity as of 31-December-14

### Today's Top Movers and Most Active Stocks

Best Return Performers	Price (JD)	Daily Return
<b>THE JORDAN PIPES MANUFACTURING</b>	<b>1.27</b>	<b>5.0%</b>
<b>ARAB BANK \$USD</b>	<b>6.75</b>	<b>4.7%</b>
<b>M. E PHARMA. &amp; CHMICAL IND. &amp; MEDICAL APPLIANCE</b>	<b>1.40</b>	<b>4.5%</b>
<b>NATIONAL STEEL INDUSTRY</b>	<b>0.76</b>	<b>4.1%</b>
<b>UNIVERSAL CHEMICAL INDUSTRIES</b>	<b>0.52</b>	<b>4.0%</b>

Worst Return Performers	Price (JD)	Daily Return
<b>ARAB CENTER FOR PHARM.&amp; CHEMICALS</b>	<b>0.81</b>	<b>(4.7%)</b>
<b>JORDAN PRESS FOUNDATION/AL-RA'I</b>	<b>1.10</b>	<b>(4.3%)</b>
<b>SALAM INTERNATIONL TRANSPORT &amp; TRADING</b>	<b>0.46</b>	<b>(4.2%)</b>
<b>SPECIALIZED INVESTMENT COMPOUNDS</b>	<b>0.46</b>	<b>(4.2%)</b>
<b>TRAVERTINE CO.</b>	<b>0.70</b>	<b>(4.1%)</b>

Most Active Stocks By Volume	Price (JD)	Volume ('000 Shrs)
<b>AD-DULAYL INDUSTRIAL PARK &amp; REAL ESTATE CO.</b>	<b>2.20</b>	<b>2,003</b>
<b>AL-AMAL FINANCIAL INVESTMENTS CO.</b>	<b>1.64</b>	<b>1,200</b>
<b>ARAB BANK \$USD</b>	<b>6.75</b>	<b>1,124</b>
<b>JORDAN DUBAI PROPERTIES</b>	<b>0.40</b>	<b>379</b>
<b>SPECIALIZED INVESTMENT COMPOUNDS</b>	<b>0.46</b>	<b>374</b>

Source: KAMCO Research

### Market Return, Volatility & Trading Indicators

Market Return	Closing Value	DTD Chg	DTD % Chg	MTD % Chg	YTD-15 % Chg
<b>ASE Index</b>	<b>2,124.82</b>	<b>6.06</b>	<b>0.3%</b>	<b>(0.0%)</b>	<b>(1.9%)</b>
<b>Market Cap (JD Mn)</b>	<b>13,679.31</b>	<b>169.19</b>	<b>1.3%</b>	<b>2.3%</b>	<b>(1.6%)</b>

Benchmark Volatility**	Since Jan-2014	Since Jan-2013	Since Jan-2012
<b>ASE Index</b>	<b>7.3%</b>	<b>7.8%</b>	<b>7.5%</b>

\*\* Annualized Standard Deviation of Daily Returns

Trading Indicators	Today's Value	DTD Chg	DTD % Chg	Average Daily YTD-15	YTD-14
<b>Volume ('000 Shares)</b>	<b>6,833</b>	<b>(1,717)</b>	<b>(20.1%)</b>	<b>6,588</b>	<b>4,940</b>
<b>Value Traded (JD '000)</b>	<b>16,524</b>	<b>1,648</b>	<b>11.1%</b>	<b>7,628</b>	<b>6,286</b>
<b>No. of Trades</b>	<b>2,926</b>	<b>(83)</b>	<b>(2.8%)</b>	<b>2,398</b>	<b>2,291</b>

<b>Market Breadth</b>	<b>31</b>	<b>27</b>	<b>61</b>
-----------------------	-----------	-----------	-----------

### YTD-2015 Top Movers and Most Active Stocks

YTD-15 Best Return Performers	Price (JD)	Volume ('000 Shrs)	YTD-15 Return
<b>JORDAN DAIRY</b>	<b>7.54</b>	<b>94.7</b>	<b>273.3%</b>
<b>AD-DULAYL INDUSTRIAL PARK &amp; REAL ESTATE CO.</b>	<b>2.20</b>	<b>268,778.6</b>	<b>168.3%</b>
<b>REAL ESTATE DEVELOPMENT</b>	<b>0.40</b>	<b>42,473.1</b>	<b>122.2%</b>
<b>AL-AMAL FINANCIAL INVESTMENTS CO.</b>	<b>1.64</b>	<b>61,409.9</b>	<b>88.5%</b>
<b>JORDAN LOAN GUARANTEE CORP.</b>	<b>0.90</b>	<b>5,839.8</b>	<b>69.8%</b>

YTD-15 Worst Return Performers	Price (JD)	Volume ('000 Shrs)	YTD-15 Return
<b>AL-TAJAMOUAT FOR CATERING AND HOUSING CO.</b>	<b>0.53</b>	<b>83,698.3</b>	<b>(58.6%)</b>
<b>JORDAN INDUSTRIAL RESOURCES</b>	<b>0.26</b>	<b>75,346.4</b>	<b>(46.9%)</b>
<b>JORDAN PRESS FOUNDATION/AL-RA'I</b>	<b>1.10</b>	<b>346.3</b>	<b>(45.5%)</b>
<b>TRANSPORT&amp; INVESTMENT BARTER CO.</b>	<b>0.44</b>	<b>90,197.6</b>	<b>(39.7%)</b>
<b>JORDAN DUBAI PROPERTIES</b>	<b>0.40</b>	<b>3,663.3</b>	<b>(39.4%)</b>

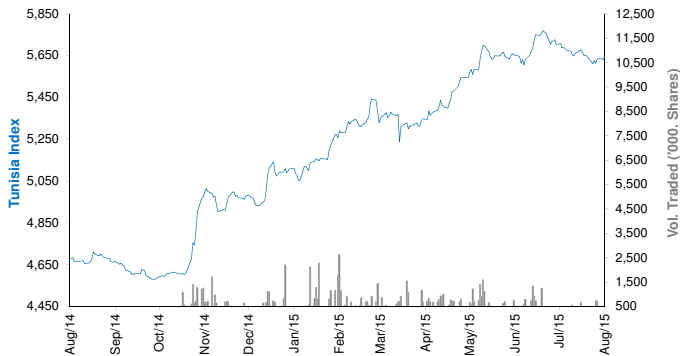
YTD-15 Most Active Stocks by Volume	Price (JD)	Volume ('000 Shrs)	YTD-15 Return
<b>AD-DULAYL INDUSTRIAL PARK &amp; REAL ESTATE CO.</b>	<b>2.20</b>	<b>268,779</b>	<b>168.3%</b>
<b>TRANSPORT&amp; INVESTMENT BARTER CO.</b>	<b>0.44</b>	<b>90,198</b>	<b>(39.7%)</b>
<b>SPECIALIZED INVESTMENT COMPOUNDS</b>	<b>0.46</b>	<b>86,869</b>	<b>(20.7%)</b>
<b>AL-TAJAMOUAT FOR CATERING AND HOUSING CO.</b>	<b>0.53</b>	<b>83,698</b>	<b>(58.6%)</b>
<b>JORDAN INDUSTRIAL RESOURCES</b>	<b>0.26</b>	<b>75,346</b>	<b>(46.9%)</b>

YTD-15 Return: Is a total return which accounts in addition to the change in price the cash & share dividends announced during the year.

## Tunisia Stock Exchange Daily Report

August 18, 2015

### Index Performance relative to Volume



### Sectors' Return & Valuation Multiples

	Market Cap. (DT Mn)	MTD % Chg	P/E (X)	P/B (X)	Yield (%)
<b>Tunis Stock Exchange</b>	<b>16,514</b>	<b>(1.7%)</b>	<b>13.59</b>	<b>1.46</b>	<b>2.7%</b>
<b>Banking</b>	<b>6,740</b>	<b>(1.6%)</b>	<b>16.45</b>	<b>1.51</b>	<b>3.2%</b>
<b>Insurance</b>	<b>810</b>	<b>0.4%</b>	<b>19.27</b>	<b>1.71</b>	<b>2.1%</b>
<b>Leasing</b>	<b>511</b>	<b>(0.4%)</b>	<b>11.62</b>	<b>1.26</b>	<b>4.2%</b>
<b>Financial Services</b>	<b>1,451</b>	<b>1.3%</b>	<b>16.02</b>	<b>2.21</b>	<b>1.1%</b>
<b>Industrial</b>	<b>1,172</b>	<b>1.3%</b>	<b>2.50</b>	<b>0.38</b>	<b>2.3%</b>
<b>Chemical Industry</b>	<b>590</b>	<b>(5.1%)</b>	<b>15.34</b>	<b>1.76</b>	<b>4.1%</b>
<b>Food &amp; Beverage</b>	<b>3,030</b>	<b>(5.4%)</b>	<b>20.03</b>	<b>4.15</b>	<b>3.1%</b>
<b>Retailing</b>	<b>1,356</b>	<b>(1.9%)</b>	<b>NM</b>	<b>3.70</b>	<b>0.3%</b>
<b>Others</b>	<b>855</b>	<b>1.2%</b>	<b>NM</b>	<b>1.14</b>	<b>3.5%</b>

Sectors' MTD Return is based on the Change in market cap. and it might not conform with the benchmark return for each sector

### Top 10 Stocks by Market Capitalization

	Market Cap. (DT Mn)	P/E (X)	ROE* (%)
<b>1-Société Frigorifique et Brasserie de Tunis</b>	<b>2,113</b>	<b>16.49</b>	<b>22.3%</b>
<b>2-Banque de Tunisie</b>	<b>1,566</b>	<b>17.86</b>	<b>14.0%</b>
<b>3-Banque Internationale Arabe de Tunisie</b>	<b>1,378</b>	<b>11.81</b>	<b>17.0%</b>
<b>4-Banque Attijari De Tunisie</b>	<b>994</b>	<b>13.35</b>	<b>17.7%</b>
<b>5-Poulina Group Holding</b>	<b>990</b>	<b>13.67</b>	<b>12.5%</b>
<b>6-Delice Holding</b>	<b>850</b>	<b>32.91</b>	<b>20.2%</b>
<b>7-Amen Bank</b>	<b>665</b>	<b>7.35</b>	<b>13.2%</b>
<b>8-Union Bancaire pour le Commerce et</b>	<b>510</b>	<b>17.55</b>	<b>9.9%</b>
<b>9-Arab Tunisian Bank</b>	<b>462</b>	<b>8.37</b>	<b>10.6%</b>
<b>10-Banque Nationale Agricole</b>	<b>461</b>	<b>24.62</b>	<b>3.2%</b>
<b>Subtotal</b>	<b>9,988</b>	<b>14.30</b>	<b>13.7%</b>

\*: ROE is based on Net Profit for the Period FY-14 & Shareholders' Equity as of 31-December-14

### Today's Top Movers and Most Active Stocks

Best Return Performers	Price (DT)	Daily Return
<b>Société Générale Industrielle de Filtration</b>	<b>3.30</b>	<b>5.8%</b>
<b>TelNet Holding</b>	<b>4.58</b>	<b>2.0%</b>
<b>L'Accumulateur Tunisien ASSAD</b>	<b>6.90</b>	<b>1.6%</b>
<b>Société Tunisienne d'Assurances et de Réassurances</b>	<b>179.50</b>	<b>1.1%</b>
<b>Société Tunisienne de Réassurance</b>	<b>8.24</b>	<b>1.1%</b>

Worst Return Performers	Price (DT)	Daily Return
<b>SOTIPAPIER</b>	<b>4.61</b>	<b>(3.8%)</b>
<b>Banque de l'Habitat</b>	<b>14.00</b>	<b>(3.2%)</b>
<b>Société Frigorifique et Brasserie de Tunis</b>	<b>23.48</b>	<b>(3.1%)</b>
<b>Electrostar</b>	<b>4.85</b>	<b>(3.0%)</b>
<b>Ciments De Bizerte</b>	<b>4.66</b>	<b>(2.9%)</b>

Most Active Stocks By Volume	Price (DT)	Volume (Shares)
<b>Société Générale Industrielle de Filtration</b>	<b>3.30</b>	<b>83,018</b>
<b>Banque de Tunisie</b>	<b>10.44</b>	<b>25,354</b>
<b>Société Tunisienne de Banque</b>	<b>6.00</b>	<b>22,189</b>
<b>TelNet Holding</b>	<b>4.58</b>	<b>19,201</b>
<b>Arab Tunisian Lease</b>	<b>2.81</b>	<b>17,894</b>

Source: KAMCO Research

### Market Return, Volatility & Trading Indicators

Market Return	Closing Value	DTD Chg	DTD % Chg	MTD % Chg	YTD-15 % Chg
<b>Tunisia Index</b>	<b>5,533.08</b>	<b>(37.97)</b>	<b>(0.7%)</b>	<b>(1.8%)</b>	<b>8.7%</b>
<b>Market Cap (DT Mln)</b>	<b>16,514</b>	<b>(100.94)</b>	<b>(0.6%)</b>	<b>(1.7%)</b>	<b>1.9%</b>

Benchmark Volatility	Since Jan-14	Since Jan-13	Since Jan-12
<b>Tunisia Index</b>	<b>6.7%</b>	<b>6.9%</b>	<b>6.9%</b>

Trading Indicators	Today's Value	DTD Chg	DTD % Chg	Average Daily YTD-15	YTD-14
<b>Volume ('000 Shares)</b>	<b>290</b>	<b>22.9</b>	<b>8.6%</b>	<b>633</b>	<b>782</b>
<b>Value Traded ('000 DT)</b>	<b>2,235</b>	<b>319</b>	<b>16.6%</b>	<b>5,729</b>	<b>5,082</b>
<b>No. of Trades</b>	<b>871</b>	<b>16</b>	<b>2%</b>	<b>1,413</b>	<b>1,449</b>

Market Breadth	▲ 10	▼ 22	= 32
----------------	------	------	------

### YTD-2015 Top Movers and Most Active Stocks

YTD-15 Best Return Performers	Price (DT)	Volume ('000 Shrs)	YTD-15 Return
<b>Banque Nationale Agricole</b>	<b>14.40</b>	<b>7,382.5</b>	<b>89.5%</b>
<b>Euro-Cycles</b>	<b>26.70</b>	<b>1,343.5</b>	<b>64.6%</b>
<b>Société de Placement et de Dévelop. Ind. et Touristique</b>	<b>14.50</b>	<b>239.9</b>	<b>57.8%</b>
<b>Banque de l'Habitat</b>	<b>14.00</b>	<b>2,347.1</b>	<b>36.6%</b>
<b>Société Tunisienne d'Assurances et de Réassurances</b>	<b>179.50</b>	<b>100.5</b>	<b>23.6%</b>

YTD-15 Worst Return Performers	Price (DT)	Volume ('000 Shrs)	YTD-15 Return
<b>Société Tunisienne d'Equipeement</b>	<b>5.01</b>	<b>0.758</b>	<b>(51.9%)</b>
<b>Société Tunis. d'Entreprises de Télécom.</b>	<b>1.71</b>	<b>733.0</b>	<b>(50.4%)</b>
<b>Société Nouvelle Maison de la Ville de Tunis</b>	<b>13.64</b>	<b>592.4</b>	<b>(38.0%)</b>
<b>Industries Chimiques du Fluor</b>	<b>26.27</b>	<b>10.5</b>	<b>(30.9%)</b>
<b>Electrostar</b>	<b>4.85</b>	<b>2,499.2</b>	<b>(29.6%)</b>

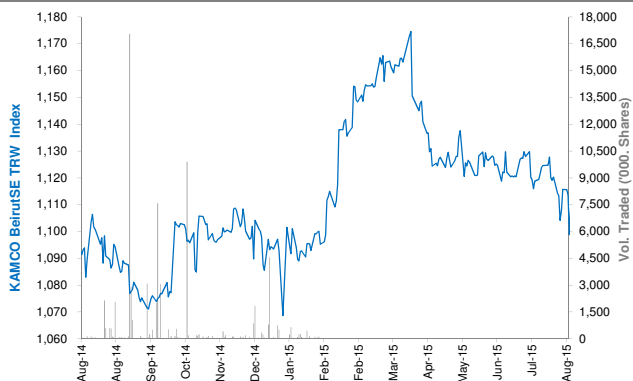
YTD-15 Most Active Stocks by Volume	Price (DT)	Volume ('000 Shrs)	YTD-15 Return
<b>Société Moderne de Céramique</b>	<b>2.92</b>	<b>15,841.8</b>	<b>16.3%</b>
<b>Banque Nationale Agricole</b>	<b>14.40</b>	<b>7,382.5</b>	<b>89.5%</b>
<b>Société Frigorifique et Brasserie de Tunis</b>	<b>23.48</b>	<b>7,366.1</b>	<b>4.4%</b>
<b>Société d'Articles Hygiéniques</b>	<b>10.93</b>	<b>6,790.5</b>	<b>17.4%</b>
<b>TUNISAIR</b>	<b>0.86</b>	<b>4,340.8</b>	<b>(23.9%)</b>

YTD-15 Return: Is a total return which accounts in addition to the change in price the cash & share dividends announced during the year.

## Beirut Stock Exchange Daily Report

August 18, 2015

### Index Performance relative to Volume



### Sectors' Return & Valuation Multiples

	Market Cap. (USD Mn)	MTD % Chg	P/E (X)	P/B (X)	Yield (%)
<b>Beirut Stock Exchange</b>	<b>11,368</b>	<b>(0.6%)</b>	<b>1.22</b>	<b>0.11</b>	<b>2.6%</b>
<b>Banking</b>	<b>9,198</b>	<b>(0.7%)</b>	<b>5.16</b>	<b>0.56</b>	<b>2.9%</b>
<b>Industrial</b>	<b>325</b>	<b>0.4%</b>	<b>6.12</b>	<b>0.89</b>	<b>8.5%</b>
<b>Trading</b>	<b>35</b>	<b>0.0%</b>	<b>0.01</b>	<b>0.00</b>	<b>0.0%</b>
<b>Real Estate &amp; Construction</b>	<b>1,829</b>	<b>(0.4%)</b>	<b>10.01</b>	<b>0.98</b>	<b>0.0%</b>

Sectors' MTD Return is based on the Change in market cap. and it might not conform with the benchmark return for each sector

### Market Breadth

▲	0	▼	3	=	27
---	---	---	---	---	----

### Top 10 Stocks by Market Capitalization

	Market Cap. (USD Mn)	P/E (X)	ROE* (%)
1- Bank Audi	2,379	5.99	10.3%
2- BLOM Bank	2,064	5.63	14.4%
3- Solidere A	1,109	6.07	9.8%
4- Byblos Bank	922	5.51	6.7%
5- BLOM Bank GDR	739	-	-
6- Solidere B	720	3.94	9.8%
7- Bank Audi GDR	699	-	-
8- Bank Of Beirut	310	2.86	11.2%
9- Holcim Liban	295	6.18	14.1%
10- Byblos Bank Preferred 2009	204	-	-
<b>Subtotal</b>	<b>9,439</b>	<b>5.10</b>	<b>10.7%</b>

\*: ROE is based on Net Profit for the Period FY-14 & Shareholders' Equity as of 31-December-14

### Market Return, Volatility & Trading Indicators

Market Return	Closing Value	DTD Chg	DTD % Chg	MTD % Chg	YTD-15 % Chg
KAMCO BeirutSE TRW Index	1,108.67	(2.18)	(0.2%)	(0.6%)	1.5%
Market Cap (USD Mn)	11,367.575	(22.43)	(0.2%)	(0.6%)	1.3%
Benchmark Volatility	Since Jan-14	Since Jan-13		Since Jan-12	
KAMCO BeirutSE TRW Index	7.7%	7.4%		7.1%	
Trading Indicators	Today's Value	DTD Chg	DTD % Chg	Average Daily YTD-15	YTD-14
Volume ('000s shares)	20.80	13	161.8%	329	662
Value Traded ('000s USD)	366.19	203	124.8%	2,643	2,878

### Today's Top Movers and Most Active Stocks

Best Return Performers	Price (USD)	Daily Return

Worst Return Performers	Price (USD)	Daily Return
Solidere B	11.08	(2.7%)
BLC Bank Preferred B	100.00	(0.5%)
Solidere A	11.09	(0.2%)

Most Active Stocks by Volume	Price (USD)	Volume (Shares)
Solidere B	11.08	16,129
Solidere A	11.09	1,825
BLC Bank Preferred B	100.00	1,650
Byblos Bank	1.63	1,200
BLOM Preferred 2011	10.10	-

Source: KAMCO Research

### YTD-2015 Top Movers and Most Active Stocks

YTD Best Return Performers	Price (USD)	YTD Volume (Shares)	YTD-15 Return
Ciments Blancs N	3.10	574	12.7%
BLOM Bank	9.60	5,779,527	9.1%
BEMO Bank	1.90	215,084	8.6%
Bank of Beirut Preferred Class J	25.75	48,525	3.0%
BLOM Bank GDR	10.00	809,902	2.0%

YTD Worst Return Performers	Price (USD)	YTD Volume (Shares)	YTD-15 Return
Bank Audi GDR	6.010	7,051,219	(8.2%)
Ciments Blancs B	3.500	12,450	(6.7%)
Bank of Beirut Preferred Class E	25.500	89,831	(2.9%)
Bank of Beirut Preferred Class H	25.600	163,752	(2.5%)
Solidere B	11.08	1,320,584	(2.3%)

YTD Most Active Stocks by Volume	Price (USD)	YTD Volume (Shares)	YTD-15 Return
Bank Audi	5.95	20,997,095	(0.8%)
Byblos Bank	1.63	7,063,574	1.9%
Bank Audi GDR	6.01	7,051,219	(8.2%)
BLOM Bank	9.60	5,779,527	9.1%
Solidere A	11.09	3,301,963	(2.0%)

YTD-15 Return: Is a total return which accounts in addition to the change in price the cash & share dividends announced during the year.

## Casablanca Stock Exchange Daily Report

(The Bulletin covers the 41 Stocks listed on the Main Market)

August 18, 2015

### Index Performance relative to Volume



### Market Breadth

▲ 7 ▼ 8 = 26

### Top 10 Stocks by Market Capitalization

	Market Cap. (MAD Mn)	P/E (X)	ROE* (%)
1-Itissalat Al-Maghrib	101,360	17.3	36.8%
2-Attijariwafa Bank	70,737	16.2	12.3%
3-Banque Marocaine Du Commerce Exterieur	39,123	20.1	12.1%
4-Banque Centrale Populaire	38,091	17.3	6.9%
5-Ciments Du Maroc	18,752	23.4	12.7%
6-Wafa Assurances	13,475	17.3	19.9%
7-CIE Generale Immobiliere	10,677	NM	1.8%
8-Holcim Maroc	9,683	16.0	30.7%
9-Douja Prom Addoha	9,135	9.0	9.1%
10-Banque Marocaine Due Commerce Et De L'Industries	8,749	24.0	4.3%
<b>Subtotal</b>	<b>319,782</b>	<b>17.78</b>	<b>13.3%</b>

\*: ROE is based on Net Profit for the period FY-14 and Shareholders' equity as of 31-December-14

### Today's Top Movers and Most Active Stocks

Best Return Performers			Price (MAD)	Daily Return
Med Paper			18.00	2.8%
ENNAKL Automobiles			39.99	2.3%
Auto Hall			98.00	1.6%
Societe Nationale d'Electrolyse et de Petrochimie			112.05	0.9%
Attijariwafa Bank			351.50	0.4%
Worst Return Performers			Price (MAD)	Daily Return
Managem			831.00	(5.0%)
Disway			200.00	(2.0%)
Banque Centrale Populaire			220.00	(1.7%)
Miniere Touissit			1,146.00	(1.7%)
Banque Marocaine Du Commerce Exterieur			218.00	(0.9%)
Most Active Stocks By Volume			Price (MAD)	Volume (Shrs)
Itissalat Al-Maghrib			115.30	51,080
Banque Marocaine Du Commerce Exterieur			218.00	10,105
Douja Prom Addoha			29.00	7,868
Attijariwafa Bank			351.50	5,738
Banque Centrale Populaire			220.00	4,664

Source: KAMCO Research

### Sectors' Return & Valuation Multiples

	Market Cap. (MAD Mn)	MTD % Chg	P/E (X)	P/B (X)	Yield (%)
<b>Casablanca Stock Exchange</b>	<b>427,774</b>	<b>(1.0%)</b>	<b>21.6</b>	<b>2.0</b>	<b>3.3%</b>
Banking	169,754	(0.6%)	17.7	1.7	2.7%
Beverages	1,782	(2.2%)	17.0	3.2	0.0%
Chemicals	269	(10.9%)	NM	0.6	0.0%
Construction & Bldg. Material	63,833	(1.8%)	22.8	4.1	2.1%
Distributors	9,378	1.1%	25.0	2.4	0.0%
Electrical & Electronic Equipment	320	(14.2%)	NM	0.0	0.0%
Electricity	1,221	(2.2%)	1.5	0.3	0.0%
Food Producers & Processors	3,693	0.1%	4.4	0.7	15.6%
Holding Companies	2,364	(2.9%)	15.2	1.9	4.8%
Insurance	21,422	0.6%	16.5	2.6	5.0%
Investment & other Finance	3,410	(3.6%)	13.7	1.6	3.0%
Leisures & Hotel	1,450	(3.2%)	NM	1.6	0.0%
Materials, Software & Computer	715	(4.2%)	9.8	0.6	4.0%
Mining	13,828	(2.5%)	23.1	2.4	2.4%
Oil & Gas	8,396	(1.7%)	NM	0.9	0.0%
Real Estate	20,471	0.2%	25.8	1.2	0.0%
Telecommunications	101,360	(1.5%)	17.3	6.4	6.0%
Transport	558	2.2%	14.3	2.0	0.0%
Utilities	3,504	0.0%	12.4	2.0	0.0%
Forestry & Paper	46	12.5%	NM	2.2	0.0%

Sectors' MTD Return is based on the Change in market cap. and it might not conform with the benchmark return for each sector

### Market Return, Volatility & Trading Indicators

Market Return	Closing Value	DTD Chg	DTD % Chg	MTD % Chg	YTD-15 % Chg
MASI Index	9,637.40	(15.7)	(0.2%)	(1.1%)	0.2%
MADEX Index	7,896.28	(15.6)	(0.2%)	(1.1%)	0.7%
Market Cap (MAD Mn)	427,774	(0.9)	(0.2%)	(1.0%)	(0.9%)

Benchmark Volatility**	YTD-14	Since Jan-13	Since Jan-12	Since Jan-11	Since Jan-10
MASI Index	7.8%	8.3%	8.7%	9.7%	9.8%
MADEX Index	9.4%	8.3%	8.7%	9.1%	10.1%

\*\* Annualized Standard Deviation of Daily Returns

Trading Indicators	Today's Value	DTD Chg	DTD % Chg	Average Daily YTD-15	YTD-14
Volume ('000 Shares)	84.51	(281.12)	(76.9%)	607	516
Value Traded (MAD Mn)	5.94	(19.56)	(76.7%)	46	70

### YTD-2015 Top Movers and Most Active Stocks

YTD Best Return Performers			Price (MAD)	Volume (Shrs)	YTD-15 Return
Compagnie de Transport au Maroc			455.00	35,675	40.0%
Ciments Du Maroc			1,299.00	276,852	38.2%
Hightech Payment Systems SA			480.00	28,647	29.0%
TAQA MOROCCO			546.30	592,246	28.5%
Holcim Maroc			2,300.00	153,555	20.8%
YTD Worst Return Performers			Price (MAD)	Volume (Shrs)	YTD-15 Return
Alliances Developpement Immobilier			52.90	2,400,088	(81.0%)
Marocaine de l Industrie du Raffinage			127.80	431,324	(47.0%)
Societe Nationale d'Electrolyse et de Petrochimie			112.05	84,660	(45.8%)
Med Paper			18.00	508,722	(35.3%)
Fenie Brossette			127.85	21,422	(33.8%)
YTD Most Active Stocks by Volume			Price (MAD)	Volume ('000 Shrs)	YTD-15 Return
Douja Prom Addoha			29.00	34,708	(22.9%)
Itissalat Al-Maghrib			115.30	18,365	1.3%
Attijariwafa Bank			351.50	9,182	2.2%
Comp Suc Maroc Et De Raff			173.65	6,973	4.0%
Banque Marocaine Du Commerce Exterieur			218.00	6,430	(0.9%)

YTD-15 Return: accounts in addition to the chg in price the cash & share dividends announced during the year.

## Damascus Securities Exchange Daily Report

August 18, 2015

### Index Performance relative to Volume



### Sectors' Return & Valuation Multiples

	Market Cap. (SRY Mn)	MTD % Chg	P/E (X)	P/B (X)	Yield (%)
<b>Damascus SE</b>	<b>124,992</b>	<b>(0.4%)</b>	<b>4.9</b>	<b>0.9</b>	<b>0.3%</b>
<b>Banking</b>	<b>111,127</b>	<b>(0.4%)</b>	<b>4.70</b>	<b>0.84</b>	<b>0.0%</b>
<b>Services</b>	<b>1,470</b>	<b>0.0%</b>	<b>26.68</b>	<b>2.67</b>	<b>2.0%</b>
<b>Industrial</b>	<b>3,926</b>	<b>0.0%</b>	<b>6.62</b>	<b>1.58</b>	<b>0.0%</b>
<b>Insurance</b>	<b>7,930</b>	<b>(0.7%)</b>	<b>7.06</b>	<b>0.89</b>	<b>4.7%</b>
<b>Agricultural</b>	<b>539</b>	<b>0.0%</b>	<b>NM</b>	<b>3.81</b>	<b>0.0%</b>

Sectors' MTD Return is based on the Change in market cap. and it might not conform with the benchmark return for each sector

### Market Breadth

▲	1	▼	1	=	22
---	---	---	---	---	----

### Top 10 Stocks by Market Capitalization

	Market Cap. (SRY Mn)	Trailing P/E (X)	ROE* (%)
1- Banque Bemo Saudi Fransi	16,950	7.3	20.6%
2- Qatar National Bank - Syria	14,550	1.7	23.5%
3- Bank Audi Syria	13,238	4.5	29.1%
4- Bank Of Syria And Overseas	9,400	4.7	25.7%
5- Arab Bank- Syria	9,301	NM	NM
6- The Int'l Bank For Trade & Finance	8,059	NM	0.1%
7- Syria International Islamic Bank	7,815	NM	NM
8- Byblos Bank Syria	7,650	7.0	13.7%
9- Al Baraka Bank - Syria	5,650	2.2	24.0%
10- Cham Bank	4,500	2.1	21.4%
<b>Subtotal</b>	<b>92,613</b>	<b>4.89</b>	<b>17.5%</b>

\* ROE is based on FY-2014 Net Profit & Shareholders' Equity as of 31-December-14

### Today's Top Movers & Most Active Stocks

Best Return Performers	Price (SRY)	Daily Return
Al Baraka Bank - Syria	113.00	0.8%

Worst Return Performers	Price (SRY)	Daily Return
United Insurance Co.	170.25	(1.9%)

Most Active Stocks by Volume	Price (SRY)	Volume (Shrs)
United Insurance Co.	170.25	10,000
Al Baraka Bank - Syria	113.00	2,000

Source: KAMCO Research

### Market Return, Volatility & Trading Indicators

Market Return	Closing Value	DTD Chg.	DTD % Chg.	MTD % Chg.	YTD-15 % Chg.
DSE Weighted Index	1,207.26	0.17	0.0%	(0.4%)	(5.0%)
Market Cap (SRY Mn)	124,992	18	0.0%	(0.4%)	(5.6%)

Benchmark Volatility	Since Jan-14	Since Jan-13	Since Jan-12
DSE Weighted Index	4.7%	9.8%	8.9%

\*\* Annualized Standard Deviation of Daily Returns

Trading Indicators	Today's Value	DTD Chg.	DTD % Chg.	Average Daily YTD-15	YTD-14
Volume (Shrs)	12,000	(9,131)	(43.2%)	39,227	362
Value Traded ('000 SRY)	1,929	(820)	(29.8%)	5,374	21,824
No. of Trades	2	(8.0)	(80.0%)	23	47

### YTD-2015 Top Movers & Most Active Stocks

YTD Best Return Performers	Price (SRY)	YTD Vol. (Shrs)	YTD-15 Return
Alalhiah Vegetable Oil Company E.S.A	261.75	57,871	19.0%
United Insurance Co.	170.25	50,840	9.8%
Bank Al Sharq	135.00	31,505	3.6%
Bank Of Syria And Overseas	235.00	224,065	2.6%
Arab Bank- Syria	184.18	106,419	1.2%

YTD Worst Return Performers	Price (SRY)	YTD Vol. (Shrs)	YTD-15 Return
Qatar National Bank Syria	97.00	858,561	(19.0%)
National Insurance Company	118.25	170,750	(17.5%)
Syria International Islamic Bank	91.95	1,010,396	(16.2%)
Cham Bank	90.00	245,857	(13.7%)
Al Baraka Bank - Syria	113.00	991,139	(10.2%)

YTD Most Active Stocks by Volume	Price (SRY)	YTD Vol. (Shrs)	YTD-15 Return
Syria International Islamic Bank	91.95	1,010,396	(16.2%)
Al Baraka Bank - Syria	113.00	991,139	(10.2%)
Qatar National Bank Syria	97.00	858,561	(19.0%)
Bank Audi Syria	231.25	574,966	0.0%
Cham Bank	90.00	245,857	(13.7%)

YTD-15 Return: Is a total return which accounts in addition to the change in price the cash & share dividends announced during the year.



---

## Disclaimer & Important Disclosures

KAMCO is authorized and fully regulated by the Capital Markets Authority ("CMA") and partially regulated by the Central Bank of Kuwait ("CBK")

This document is provided for informational purposes only. Nothing contained in this document constitutes investment, an offer to invest, legal, tax or other advice or guidance and should be disregarded when considering or making investment decisions. In preparing this document, KAMCO did not take into account the investment objectives, financial situation and particular needs of any particular person. Accordingly, before acting on this document, investors should independently evaluate the investments and strategies referred to herein and make their own determination of whether it is appropriate in light of their own financial circumstances and objectives. The entire content of this document is subject to copyright with all rights reserved. This research and the information contained herein may not be reproduced, distributed or transmitted in Kuwait or in any other jurisdiction to any other person or incorporated in any way into another document or other material without our prior written consent.

### Analyst Certification

Each of the analysts identified in this report certifies, with respect to the sector, companies or securities that the individual analyses, that (1) the views expressed in this report reflect his or her personal views about all of the subject companies and securities and (2) no part of his or her compensation was, is or will be directly or indirectly dependent on the specific recommendations or views expressed in this report.

### KAMCO Ratings

KAMCO investment research is based on the analysis of regional and country economics, industries and company fundamentals. KAMCO company research reflects a long-term (12-month) target price for a company or stock. The ratings bands are:

- \* **Outperform:** Target Price represents expected returns  $\geq 10\%$  in the next 12 months
- \* **Neutral:** Target Price represents expected returns between  $-10\%$  and  $+10\%$  in the next 12 months
- \* **Underperform:** Target Price represents an expected return of  $<-10\%$  in the next 12 months

In certain circumstances, ratings may differ from those implied by a fair value target using the criteria above. KAMCO policy is to maintain up-to-date fair value targets on the companies under its coverage, reflecting any material changes to the analyst's outlook on a company. Share price volatility may cause a stock to move outside the rating range implied by KAMCO's fair value target. Analysts may not necessarily change their ratings if this happens, but are expected to disclose the rationale behind their view to KAMCO clients.

Any terms and conditions proposed by you which are in addition to or which conflict with this Disclaimer are expressly rejected by KAMCO and shall be of no force or effect. The information contained in this document is based on current trade, statistical and other public information we consider reliable. We do not represent or warrant that such information is fair, accurate or complete and it should not be relied upon as such. KAMCO has no obligation to update, modify or amend this document or to otherwise notify a recipient thereof in the event that any opinion, forecast or estimate set forth herein, changes or subsequently becomes inaccurate. The publication is provided for informational uses only and is not intended for trading purposes. The information on publications does not give rise to any legally binding obligation and/or agreement, including without limitation any obligation to update such information. You shall be responsible for conducting your own investigation and analysis of the information contained or referred to in this document and of evaluating the merits and risks involved in the securities forming the subject matter of this or other such document. Moreover, the provision of certain data/information in the publication may be subject to the terms and conditions of other agreements to which KAMCO is a party.

Nothing in this document should be construed as a solicitation or offer, or recommendation, to acquire or dispose of any investment or to engage in any other transaction, or to provide any investment advice or service. This document is directed at Professional Clients and not Retail Clients within the meaning of CMA rules. Any other persons in receipt of this document must not rely upon or otherwise act upon it. Entities and individuals into whose possession this document comes are required to inform themselves about, and observe such restrictions and should not rely upon or otherwise act upon this document where it is unlawful to make to such person such an offer or invitation or recommendation without compliance with any authorization, registration or other legal requirements.

### Risk Warnings

Any prices, valuations or forecasts are indicative and are not intended to predict actual results, which may differ substantially from those reflected. The value of an investment may go up as well as down. The value of and income from any investment may fluctuate from day to day as a result of changes in relevant economic markets (including, without limitation, foreseeable or unforeseeable changes in interest rates, foreign exchange rates, default rates, prepayment rates, political or financial conditions, etc.).

Past performance is not indicative of future results. Any opinions, estimates, valuations or projections (target prices and ratings in particular) are inherently imprecise and a matter of judgment. They are statements of opinion and not of fact, based on current expectations, estimates and projections, and rely on beliefs and assumptions. Actual outcomes and returns may differ materially from what is expressed or forecasted. There are no guarantees of future performance. Certain transactions, including those involving futures, options, and other derivatives, give rise to substantial risk and are not suitable for all investors. This document does not propose to identify or to suggest all of the risks (direct or indirect) which may be associated with the investments and strategies referred to herein.

### Conflict of Interest

KAMCO and its affiliates provide full investment banking services, and they and their directors, officers and employees, may take positions which conflict with the views expressed in this document. Salespeople, traders, and other professionals of KAMCO may provide oral or written market commentary or trading strategies to our clients and our proprietary trading desks that reflect opinions that are contrary to the opinions expressed in this document. Our asset management area, our proprietary trading desks and investing businesses may make investment decisions that are inconsistent with the recommendations or views expressed in this document. KAMCO may have or seek investment banking or other business relationships for which it will receive compensation from the companies that are the subject of this document. Facts and views presented in this document have not been reviewed by, and may not reflect information known to, professionals in other KAMCO business areas, including investment banking personnel. United Gulf Bank, Bahrain owns majority of KAMCO's shareholding and this ownership may create, or may create the appearance of, conflicts of interest.

### No Liability & Warranty

KAMCO makes neither implied nor expressed representations or warranties and, to the fullest extent permitted by applicable law, we hereby expressly disclaim any and all express, implied and statutory representations and warranties of any kind, including, without limitation, any warranty as to accuracy, timeliness, completeness, and fitness for a particular purpose and/or non-infringement. KAMCO will accept no liability in any event including (without limitation) your reliance on the information contained in this document, any negligence for any damages or loss of any kind, including (without limitation) direct, indirect, incidental, special or consequential damages, expenses or losses arising out of, or in connection with your use or inability to use this document, or in connection with any error, omission, defect, computer virus or system failure, or loss of any profit, goodwill or reputation, even if expressly advised of the possibility of such loss or damages, arising out of or in connection with your use of this document. We do not exclude our duties or liabilities under binding applicable law.



---

**KAMCO Investment Company – K.S.C (Public)**

Al-Shaheed Tower, Khalid Bin Al-Waleed Street- Sharq

P.O. BOX : 28873, Safat 13149, State of Kuwait

Tel: (+965) 1852626 Fax: (+965) 22492395

Email : [Kamcoird@kamconline.com](mailto:Kamcoird@kamconline.com)