

	Country	Benchmark		Index Value	DTD Change	YTD 2015	FY 2014
MENA Countries							
In this Report... Kuwait 2 Saudi Arabia 3 UAE - Dubai 4 UAE - Abu Dhabi 5 Qatar 6 Bahrain 7 Oman 8 Egypt 9 Jordan 10 Tunisia 11 Lebanon 12 Morocco 13 Syria 14	Kuwait	KSE Price Index	▼	6,702.62	(0.5%)	2.6%	(13.4%)
	Kuwait	KSE Weighted Index	▼	448.64	(0.4%)	2.2%	(3.1%)
	Kuwait	KAMCO TRW Index	▼	2,796.32	(0.2%)	1.5%	(1.9%)
	Saudi Arabia	TADAWUL All Share Index	▼	9,133.70	(1.8%)	9.6%	(2.4%)
	UAE - Dubai	DFM General Index	▼	3,906.60	(0.6%)	3.5%	12.0%
	UAE - Abu Dhabi	ADX General Index	▼	4,625.32	(0.1%)	2.1%	5.6%
	Qatar	QE 20 Index	▲	12,689.28	0.2%	3.3%	18.4%
	Bahrain	Bahrain All Share	▲	1,448.02	0.1%	1.5%	14.2%
	Oman	MSM 30 Index	▲	6,655.21	0.4%	4.9%	(7.2%)
	Egypt	EGX 30	▼	9,770.78	(1.3%)	9.5%	31.6%
	Jordan	ASE Index	▼	2,187.96	(0.2%)	1.0%	4.8%
	Lebanon	KAMCO Beirut SE TRW Index	▲	1,111.43	0.2%	1.7%	3.5%
	Tunisia	Tunisia Index	▲	5,333.49	0.5%	4.8%	16.2%
	Morocco	MASI	▲	10,322.43	0.1%	7.3%	5.6%
Syria	DSE Weighted Index	▼	1,244.53	(0.2%)	(2.1%)	1.7%	
Emerging Markets							
	China	SSE Composite Index	▲	3,157.70	0.5%	(2.2%)	52.9%
	Russia	RUSSIAN RTS INDEX (\$)	▲	832.33	0.8%	5.3%	(45.2%)
	India	SENSEX	▲	28,533.97	0.6%	3.7%	29.9%
	Brazil	BOVESPA Stock Index	▼	48,239.67	(0.6%)	(3.5%)	(2.9%)
	Mexico	BOLSA Index	▼	41,933.26	(1.7%)	(2.8%)	1.0%
	Korea	KOSPI Index	▲	1,945.70	0.5%	1.1%	(4.8%)
	Taiwan	TAIEX Index	▲	9,462.22	0.7%	2.0%	8.1%
Global Markets							
	World	MSCI World Index	▼	1,721.58	(0.3%)	0.7%	2.9%
	Asia	MSCI Asia Pacific	▼	139.96	(0.6%)	1.5%	(2.5%)
	Europe	DJ Stoxx 600	▼	372.04	(0.2%)	8.6%	4.4%
	Europe	FTSEurofirst 300	▼	1,483.69	(0.3%)	8.4%	4.0%
	Emerging Markets	MSCI EM Index	▼	961.21	(0.6%)	0.5%	(4.6%)
	U.S.A	S&P 500	=	2,068.53	0.0%	0.5%	11.4%
	U.S.A	DJIA	▼	17,862.14	(0.0%)	0.2%	7.5%
	U.S.A	NASDAQ Composite	▲	4,801.18	0.3%	1.4%	13.4%
	UK	FTSE 100	▼	6,818.17	(0.2%)	3.8%	(2.7%)
	Germany	DAX	▼	10,752.11	(0.0%)	9.7%	2.7%
	Japan	NIKKEI 225	▼	17,652.68	(0.3%)	2.9%	7.1%
	Hong Kong	HANG SENG INDEX	▼	24,315.02	(0.9%)	3.3%	1.3%
Commodities							
	Oil	OPEC Crude	▼	53.14	(0.8%)	2.2%	(49.6%)
	Oil	Brent	▼	54.66	(3.1%)	(5.5%)	(45.6%)
	Oil	Kuwait	▼	52.05	(2.4%)	(1.1%)	(51.7%)
	Natural Gas	NYMEX Natural Gas (USD/MMBtu)	▲	2.80	4.5%	(2.9%)	(33.8%)
	Gold	Gold Spot \$/Oz	▼	1,223.30	(0.8%)	2.9%	(1.4%)

Investment Research Department
Kamcoird@kamconline.com

P.O.Box 28873, Safat 13149 Kuwait
Tel: (965) 1852626, Extn: 1153 / 1146
Fax: (965) 22492395

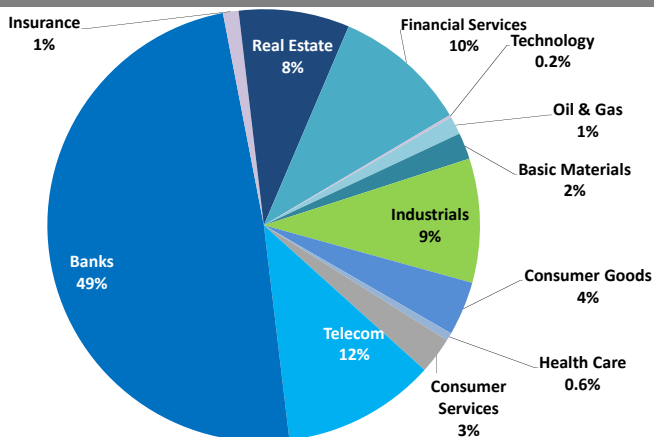
<http://www.kamconline.com>

KAMCO Investment Company - K.S.C
(Public)

Kuwait Market Daily Report

February 12, 2015

Sector Weight by Market Cap



Top 10 Kuwaiti Companies by Market Capitalization

Company Name	Market Cap. (Mn KWD)	P/E (X)	ROE* (%)
1- National Bank of Kuwait	4,319.8	17.7	9.4%
2- Kuwait Finance House	3,378.8	28.9	6.6%
3- Zain	2,376.8	11.2	13.2%
4- Ahli United Bank - Bahrain	1,404.8	11.0	13.8%
5- Kuwait Food Co. (Americana)	1,133.6	20.2	15.9%
6- Kuwait Projects Co.	1,016.8	22.2	8.9%
7- Ahli United Bank - Kuwait	930.6	20.3	14.3%
8- Agility	923.3	18.6	5.6%
9- Boubyan Bank	913.7	37.5	8.5%
10- Burgan Bank	907.6	17.7	9.3%
Total	17,306	17.79	9.9%

*: ROE is calculated based on TTM 9M-2014 net profit & shareholders' equity as of 30-Sep-14

Top Movers and Most Active Stocks

Today's Top % Gainers	Close (KWD)	Change (KWD)	Percent Change
Warba Insurance Co.	0.120	0.010	9.1%
Gulf Insurance Group	0.600	0.040	7.1%
Burgan Co. for Well Drilling	0.192	0.010	5.5%
ACICO Industries Co.	0.330	0.015	4.8%
Kuwait Portland Cement Co.	1.420	0.060	4.4%

Today's Top % Losers	Close (KWD)	Change (KWD)	Percent Change
Palms Agro Production Co.	0.108	(0.010)	(8.5%)
Investors Holding Group Co.	0.058	(0.005)	(7.9%)
Ras AL Khaimah Co. for White Cement	0.126	(0.010)	(7.4%)
Educational Holding Group	0.140	(0.010)	(6.7%)
National International Holding Co.	0.064	(0.003)	(4.5%)

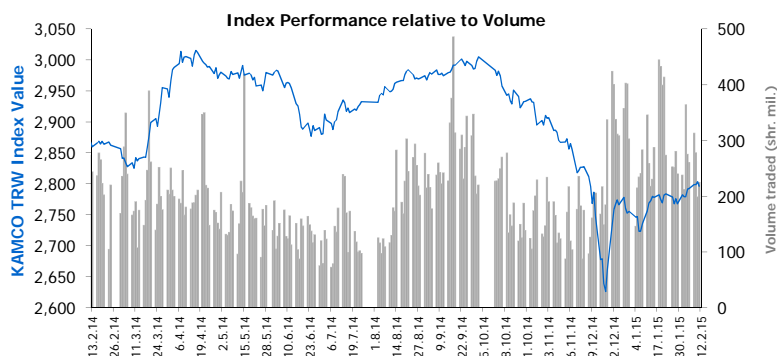
Today's Most Active by Volume	Close (KWD)	Change (KWD)	Volume (Shares)
Gulf Finance House	0.024	(0.001)	41,831,060
Al-Deera Holding Co.	0.013	0.000	26,892,751
Bayan Investment Co.	0.067	0.001	10,197,576
First Dubai For Real Estate Development	0.081	0.000	9,557,188
National Ranges Co. (MAYADEEN)	0.035	(0.001)	9,149,435

Source: KAMCO Research

Market Capitalization - Sectors' Return

	Market Cap. (KWD Mn)	DTD % Chg	MTD % Chg	YTD % Chg
Kuwaiti Stock Exchange	30,379.1	(0.4%)	1.6%	2.3%
Oil & Gas	411.5	0.4%	4.2%	5.2%
Basic Materials	603.9	(0.4%)	0.6%	(7.0%)
Industrials	2,819.8	(0.1%)	1.3%	3.3%
Consumer Goods	1,222.7	0.6%	3.3%	0.4%
Health Care	179.2	0.0%	(0.4%)	(2.6%)
Consumer Services	829.9	(1.1%)	4.1%	6.7%
Telecommunications	3,479.3	(1.8%)	4.3%	3.9%
Banks	14,849.1	(0.3%)	0.2%	1.8%
Insurance	357.6	2.6%	3.1%	0.2%
Real Estate	2,516.4	(0.2%)	4.4%	5.2%
Financial Services	3,054.4	(0.0%)	1.6%	1.4%
Technology	55.3	(0.2%)	(1.7%)	(1.8%)

Market Breadth	27	56	110		
Benchmark Return	Closing Value	DTD Chg	MTD % Chg	YTD % Chg	
KAMCO TRWI	2,796.32	(6.8)	(0.2%)	1.0%	1.5%
KSE Price Index	6,702.62	(32.4)	(0.5%)	2.0%	2.6%
KSE Weighted Index	448.64	(1.7)	(0.4%)	1.5%	2.2%
Kuwait 15 Index	1,092.23	(2.3)	(0.2%)	1.8%	3.0%
Market Cap (KWD Mn)	30,379	(111.5)	(0.4%)	1.6%	2.3%



Market Trading Data and Volatility

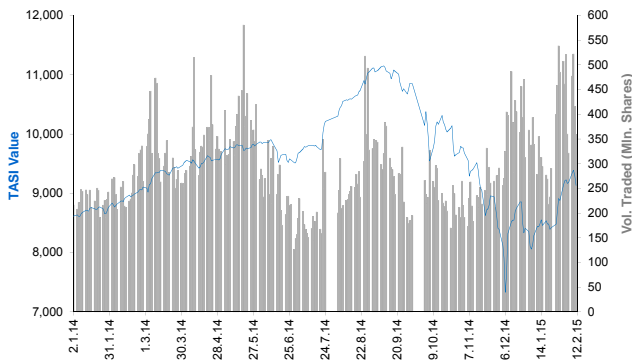
Trading Indicators	Today's Value	DTD Chg	DTD % Chg	Average Daily YTD 2015	Average Daily YTD 2014
Volume (Shrs Mn)	224.5	199.2	12.7%	279.1	382.6
Value Traded (KWD Mn)	23.4	24.7	(5.4%)	27.4	36.9
No. of Trades	5,194	5,155.0	0.8%	6,521	6,975

Market Volatility**	Volatility Since January:				
	2014	2013	2012	2011	2010
KAMCO TRW Index	7.0%	6.2%	5.9%	7.0%	7.7%
KSE Price Index	10.5%	11.2%	10.2%	9.9%	9.8%
KSE Weighted Index	10.3%	9.0%	8.6%	10.0%	10.8%

** Annualized Standard Deviation of Daily Returns

Today's Most Active by Value	Close (KWD)	Change (KWD)	Value (KWD)
Kuwait Finance House	0.780	(0.010)	4,394,032
Boubyan Bank	0.465	(0.005)	1,338,311
kuwait Telecommunication Co.	0.780	0.000	1,334,077
Agility	0.800	0.000	1,118,152
Gulf Finance House	0.024	(0.001)	1,003,141

Index Performance relative to Volume



Sectors' Return & Valuation Multiples

	Market Cap. (SAR Mn)	MTD Return	P/E (X)	P/BV (X)	Yield (%)
Saudi Stock Exchange	1,990,462	3.7%	15.9	2.2	3.0%
Banks & Financial	568,326	3.4%	12.3	2.0	1.8%
Petrochemical Industries	470,513	6.4%	12.5	1.9	5.0%
Cement	93,905	(1.5%)	16.1	3.1	5.8%
Retail	92,413	7.8%	31.9	6.9	1.5%
Energy & Utilities	74,535	10.1%	15.3	1.2	4.1%
Agric. & Food Ind.	128,794	(0.9%)	26.0	4.5	1.9%
Telecom	170,633	(0.8%)	12.5	1.9	4.8%
Insurance	46,786	5.3%	NM	2.8	0.1%
Multi-Inv.	81,800	10.2%	74.0	2.1	2.4%
Indust. Inv.	70,189	4.3%	27.7	2.1	1.4%
Bldg. & Const.	29,308	1.6%	38.0	2.6	2.3%
Real Estate Dev.	111,893	1.7%	40.1	2.2	0.8%
Transport	19,705	3.8%	17.4	1.9	2.4%
Media & Publishing	4,144	3.5%	NM	1.8	0.0%
Hotel & Tourism	27,519	(3.5%)	17.1	5.2	2.7%

Sectors' MTD Return is based on the Change in market cap. and it might not conform with the benchmark return for each sector

Top 10 Stocks by Market Capitalization

	Market Cap. (SAR Mn)	P/E (X)	ROE* (%)
1- Saudi Basic Industries Corp	281,250	11.1	15.9%
2- Saudi Telecom	130,000	10.7	20.2%
3- National Commercial Bank	129,500	8.8	32.9%
4- Al-Rajhi Bank	99,125	14.4	17.0%
5- Kingdom Holding Co.	74,118	NM	2.5%
6- Saudi Electricity Co.	72,082	15.2	7.7%
7- Samba Financial Group	55,440	11.6	12.6%
8- Jabal Omar Development Company	55,067	NM	NM
9- SABB	54,500	12.8	16.8%
10- Riyadh Bank	52,350	12.1	12.4%

Subtotal	1,003,432	12.88	15.4%
----------	-----------	-------	-------

* ROE is based on TTM 9M-2014 Net Profit & Shareholders' Equity as of 30-September-14

Today's Top Movers and Most Active Stocks

Best Return Performers	Price (SAR)	Daily Return	Value (SAR 000's)
AXA Cooperative Insurance Co.	23.95	9.9%	653
Al Alamiya for Cooperative Insurance Co.	66.25	9.9%	139,854
Dallah Healthcare Holding Co.	142.00	4.2%	22,393
Buruj Cooperative Insurance Co.	49.40	4.2%	48,752
Mediterranean & Gulf Ins. & Re-ins Co.	60.00	3.1%	177,105

Worst Return Performers	Price (SAR)	Daily Return	Value (SAR 000's)
The Co for Cooperative Ins.	75.25	(9.9%)	170,731
Middle East Specialised Cables	18.80	(9.8%)	807,161
Arabian Pipe Co.	20.20	(6.4%)	77,948
Emaar The Economic City	14.05	(6.3%)	47,181
Alinma Tokio Marine Co.	53.25	(5.4%)	13,566

Most Active Stocks By Volume	Price (SAR)	Daily Return	Volume ('000 Shrs)
Dar Al Arkan Real Estate Dev. Co.	9.50	(4.8%)	57,785
Middle East Specialised Cables	18.80	(9.8%)	41,566
Saudi Kayan	13.30	(3.9%)	41,089
Alinma Bank	22.40	(2.6%)	34,854
Malath Cooperative Ins. & Re-ins Co.	34.20	(3.9%)	7,951

Source: KAMCO Research

Market Return, Volatility & Trading Indicators

Market Return	Closing Value	DTD Chg	DTD % Chg	MTD % Chg	YTD-15 % Chg
Tadawul All Share Index	9,133.70	(166.8)	(1.8%)	2.9%	9.6%
Market Cap (SAR Mn)	1,990,462	(34,804.0)	(1.7%)	3.7%	9.6%

Benchmark Volatility**	Since Jan-14	Since Jan-13	Since Jan-12	Since Jan-11	Since Jan-10
Tadawul All Share Index	20.7%	16.8%	15.6%	16.8%	16.5%

** Annualized Standard Deviation of Daily Returns

Trading Indicators	Today's Value	DTD Chg	DTD % Chg	Average Daily YTD-15	YTD-14
Volume (Mn Shares)	359	(57)	(13.7%)	368	229
Value Traded (SAR Mn)	8,871	(1,421)	(13.8%)	9,029	6,317
No. of Trades	160,157	(4,834)	(2.9%)	159,364	110,350

Market Breadth	▲	20	▼	142	▬	6
----------------	---	----	---	-----	---	---

YTD-2015 Top Movers and Most Active Stocks

YTD-15 Best Return Performers	Price (SAR)	YTD Val (SAR Mn)	YTD Vol ('000 Shrs)	YTD-15 Return
The Co for Cooperative Ins.	75.25	2,206	34,736	50.5%
Buruj Cooperative Insurance Co.	49.40	608	15,262	48.8%
Al-Babtain Power & Telecom. Co.	39.50	842	24,860	45.8%
Alujain Corporation	23.40	932	45,270	44.4%
Saudi Industrial Export Co.	55.00	1,302	27,412	44.0%

YTD-15 Worst Return Performers	Price (SAR)	YTD Val (SAR Mn)	YTD Vol ('000 Shrs)	YTD-15 Return
AXA Cooperative Insurance Co.	23.95	1,050	27,930	(32.2%)
Middle East Specialised Cables	18.80	5,625	262,282	(14.2%)
Al-Etihad Etisalat Co.	38.30	9,401	227,752	(13.3%)
Aljazira Takaful Taawuni Co.	58.25	1,999	33,826	(10.4%)
SABB	54.50	414	7,529	(6.0%)

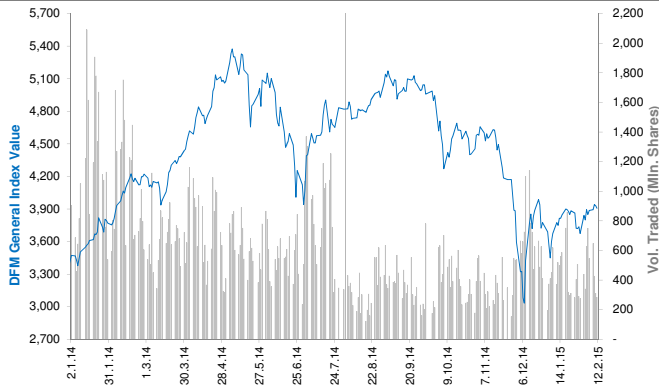
YTD-15 Most Active Stocks by Volume	Price (SAR)	YTD Val (SAR Mn)	YTD Vol ('000 Shrs)	YTD-15 Return
Dar Al Arkan Real Estate Dev. Co.	9.50	17,776	1,888,669	16.6%
Alinma Bank	22.40	25,005	1,180,965	10.3%
ZAIN KSA	6.95	4,872	703,456	7.8%
Saudi Kayan	13.30	7,288	577,241	21.5%
Saudi Arabian Mining Co.	38.10	13,035	380,116	24.9%

YTD-15 Return: Is a total return which accounts in addition to the change in price the cash & share dividends announced during the year.

Dubai Financial Market Daily Report

February 12, 2015

Index Performance relative to Volume



Top 10 Stocks by Market Capitalization

	Market Cap (AED Mn)	P/E (X)	ROE* (%)
1- Emirates NBD	51,687	11.3	10.0%
2- EMAAR Properties	48,458	15.2	7.7%
3- EMMAR MALLS GROUP	38,522	18.9	15.2%
4- Dubai Islamic Bank	27,439	11.3	16.1%
5- Mashreq Bank	24,516	10.8	14.5%
6- Emirates Integrated Telecom. (DU)	23,131	10.7	29.6%
7- Commercial Bank of Dubai	18,685	14.6	15.2%
8- Dubai Financial Market	16,160	22.2	8.6%
9- Arabtec Holding P.J.S.C.	14,021	32.5	7.4%
10- Dubai Investment	9,436	7.3	13.2%
Subtotal	290,771	12.87	12.6%

* ROE is based on TTM 9M-2014 Net Profit & Shareholders' Equity as of 30-September-14

Today's Top Movers and Most Active Stocks

Best Return Performers	Price (AED)	Daily Return	Value Traded (AED)
Aramex	3.300	1.5%	537,752
Dubai Islamic Ins.& Reins Co.(AMAN)	0.669	1.4%	33,415
SHUAA Capital	0.670	1.2%	472,657
Hits Telecom Holding Co.	0.402	1.0%	317,826
Al Salam Bank - Sudan	2.120	1.0%	1,378,905

Worst Return Performers	Price (AED)	Daily Return	Value Traded (AED)
Takaful Emarat	0.901	(3.1%)	170,208
Marka	1.310	(3.0%)	995,406
Arabtec Holding P.J.S.C.	3.190	(1.8%)	148,240,701
Al-Madina for Finance & Investment	0.374	(1.6%)	43,758
EMAAR Properties	7.210	(1.5%)	49,092,397

Most Active Stocks by Volume	Price (AED)	Daily Return	Volume Traded ('000 Shrs)
DAMAC Properties Dubai	2.530	0.4%	87,427
Gulf Finance House	0.302	(0.3%)	71,075
Arabtec Holding P.J.S.C.	3.190	(1.8%)	45,947
Dubai Parks And Resorts	0.768	(0.9%)	18,529
Union Properties	1.130	(0.9%)	10,227

Source: KAMCO Research

Sectors' Return & Valuation Multiples

	Market Cap. (AED Mn)	MTD % Chg	P/E (X)	P/BV (X)	Yield (%)
Dubai Financial Market	362,440	6.3%	12.9	1.4	2.0%
Banking	135,134	4.9%	12.1	1.3	2.4%
Consumer Staples	7,940	5.5%	64.8	3.2	0.7%
Investment & Financial	29,123	8.1%	16.5	1.3	2.2%
Insurance	6,041	1.2%	6.3	0.6	2.3%
Industrial	4,697	10.1%	21.1	0.6	1.9%
Real Estate & Construction	124,812	10.0%	NM	1.6	0.7%
Telecommunication	23,421	0.6%	11.2	2.9	6.1%
Transportation	28,424	0.9%	23.3	1.5	3.1%
Services	2,849	6.5%	2.2	0.6	1.2%

Sectors' MTD Return is based on the Change in market cap. and it might not conform with the benchmark return for each sector

Market Breadth

▲ 10 ▼ 21 = 29

Market Return, Volatility & Trading Indicators

Market Return	Closing Value	DTD Chg	DTD % Chg	MTD % Chg	YTD-15 % Chg
DFM General Index	3,906.60	(24.56)	(0.62%)	6.32%	3.51%
Market Cap (AED Mn)	362,440	(2,189.5)	(0.6%)	6.3%	8.1%

Benchmark Volatility**	Volatility Since:				
	Jan-2014	Jan-2013	Jan-2012	Jan-2011	Jan-2010
DFM General Index	37.6%	31.2%	27.4%	25.5%	24.7%

** Annualized Standard Deviation of Daily Returns

Trading Indicators	Today's Value	DTD Chg	DTD % Chg	Average Daily YTD-15	YTD-14
Volume (Mn Shares)	284	(27.1)	(8.7%)	456	1,153
Value Traded (AED Mn)	551	(16.8)	(3.0%)	780	1,918
No. of Trades	5,231	273	5.5%	7,992	11,742

YTD-2015 Top Movers and Most Active Stocks

YTD-15 Best Return Performers	Price (AED)	Value Traded (AED '000)	Volume ('000 Shrs)	YTD-15 Return
United Kaipara Dairies Co.	650.000	4	0.007	25.0%
Mashreq Bank	145.000	104,733	810	18.9%
Al Salam Group Holding	0.805	23,471	29,965	18.4%
Commercial Bank of Dubai	7.500	16,235	2,191	15.4%
Arab Insurance Group	1.780	9	5	14.8%

YTD-15 Worst Return Performers	Price (AED)	Value Traded (AED '000)	Volume ('000 Shrs)	YTD-15 Return
Int'l Financial Advisors Co.	0.470	453	880	(44.7%)
National General Insurance	3.310	74	21	(17.3%)
Ajman Bank	2.470	50,665	19,545	(11.8%)
DAMAC Properties Dubai	2.530	1,371,066	538,114	(9.3%)
Deyaar Development	0.790	1,101,017	1,327,201	(7.1%)

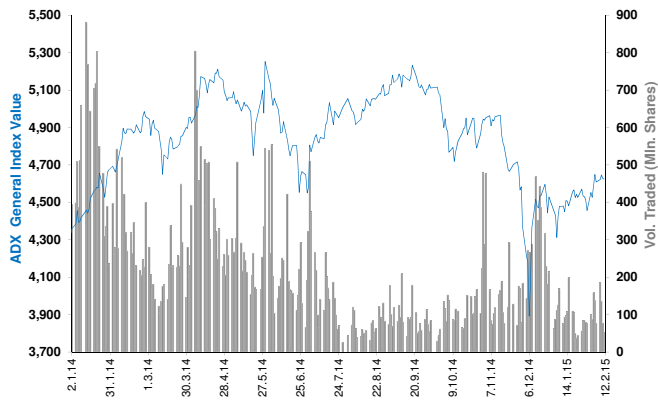
YTD-15 Most Active Stocks by Volume	Price (AED)	Value Traded (AED '000)	Volume ('000 Shrs)	YTD-15 Return
Gulf Finance House	0.302	1,028,573	3,253,595	1.0%
Arabtec Holding P.J.S.C.	3.190	4,958,955	1,635,234	8.9%
Union Properties	1.130	1,860,868	1,560,869	(6.6%)
Deyaar Development	0.790	1,101,017	1,327,201	(7.1%)
Dubai Investment	2.470	1,843,649	777,980	3.8%

YTD-15 Return: Is a total return which accounts in addition to the change in price the cash & share dividends announced during the year.

Abu Dhabi Securities Exchange Daily Report

February 12, 2015

Index Performance relative to Volume



Top 10 Stocks by Market Capitalization

	Market Cap. (AED Mn)	P/E (X)	ROE* (%)
1- Emirates Telecom. Co.	89,339	10.9	20.1%
2- First Gulf Bank	70,005	12.8	16.9%
3- National Bank Of Abu Dhabi	64,885	12.3	14.1%
4- Abu Dhabi Commercial Bank	40,288	10.5	14.9%
5- AL DAR Properties Co.	20,286	10.3	11.3%
6- Union National Bank	16,096	8.5	11.5%
7- Abu Dhabi Islamic Bank	15,511	9.2	12.5%
8- National Bank of Ras Al-Khaimah	13,578	9.9	20.2%
9- United Arab Bank	8,021	12.6	22.4%
10- Waha Capital Co.	6,028	78.1	1.9%
Subtotal	344,036	11.32	15.4%

* ROE is based on TTM 9M-2014 Net Profit & Shareholders' Equity as of 30-September-14

Today's Top Movers and Most Active Stocks

Best Return Performers	Price (AED)	Daily Return	Value (AED)
Gulf Cement Co.	1.15	3.6%	252,570
Union National Bank	5.85	3.2%	10,818,751
AGTHIA Group	6.33	2.4%	73,619
Ras Al Khaimah Cement Co.	0.97	2.1%	195,572
Dana Gas	0.49	2.1%	3,830,325

Worst Return Performers	Price (AED)	Daily Return	Value (AED)
Insurance House	0.81	(10.0%)	44,401
Al Khazna Insurance Co.	0.37	(9.8%)	53
Union Insurance Co.	1.08	(9.2%)	4,242
Sudan Telecom. Co.	0.75	(2.6%)	16,876
Eshraq Properties Co.	0.83	(2.4%)	17,667,009

Most Active Stocks by Volume	Price (AED)	Daily Return	Volume ('000 Shrs)
Eshraq Properties Co.	0.83	(2.4%)	21,047
AL DAR Properties Co.	2.58	0.0%	9,205
Dana Gas	0.49	2.1%	7,909
Waha Capital Co.	3.10	(0.3%)	2,708
Ras Al Khaimah Properties	0.77	(1.3%)	2,579

Source: KAMCO Research

Sectors' Return & Valuation Multiples

	Market Cap. (AED Mn)	MTD % Chg	P/E (X)	P/BV (X)	Dividend Yield (%)
ADX	469,630	3.1%	12.8	1.5	4.2%
Banks	256,494	4.0%	11.5	1.6	3.7%
Inv. & Financial Services	6,174	(2.4%)	53.5	1.4	3.1%
Real Estate	23,755	8.9%	10.1	1.0	3.4%
Energy	8,214	2.5%	NM	0.5	7.6%
Consumer Staples	5,289	1.8%	50.7	1.8	1.1%
Industrial	12,383	1.0%	14.0	0.8	3.8%
Insurance	9,711	(0.8%)	16.1	1.1	4.1%
Telecommunication	136,149	1.5%	12.5	2.0	5.3%
Services	11,461	1.4%	15.0	0.4	3.3%

Sectors' MTD Return is based on the Change in market cap. and it might not conform with the benchmark return for each sector

Market Breadth	▲ 11	▼ 14	▬ 40
----------------	------	------	------

Market Return, Volatility & Trading Indicators

Market Return	Closing Value	DTD Chg	DTD % Chg	MTD % Chg	YTD-15 % Chg
ADX General Index	4,625.32	(2.59)	(0.1%)	3.8%	2.1%
Market Cap (AED Mn)	469,630	(66)	(0.0%)	3.1%	1.2%

Benchmark Volatility**	Volatility Since:				
	Jan-2014	Jan-2013	Jan-2012	Jan-2011	Jan-2010
ADX General Index	21.8%	15.9%	13.5%	12.7%	12.1%

** Annualized Standard Deviation of Daily Returns

Trading Indicators	Today's Value	DTD Chg	DTD % Chg	Average Daily YTD-15	YTD-14
Volume (Mn Shares)	52	(24.2)	(31.9%)	99	477.9
Value Traded (AED Mn)	121	(54.4)	(31.1%)	218	1,105.0
No. of Trades	1,109	(293)	(20.9%)	1,943	5,412

YTD-2015 Top Movers and Most Active Stocks

YTD-15 Best Return Performers	Price (AED)	YTD-Val ('000 AED)	Volume ('000 Shrs)	YTD-15 Return
National Corp for Tourism & Hotels	6.30	444	73	26.8%
International Fish Farming Co.	7.48	724	119	24.9%
Abu Dhabi National Takaful Co.	7.24	14	2	14.9%
Commercial Bank International	2.00	3	2	14.3%
Ras Al Khaimah Poultry & Feeding Co.	1.45	65	45	14.2%

YTD-15 Worst Return Performers	Price (AED)	YTD-Val ('000 AED)	Volume ('000 Shrs)	YTD-15 Return
National Takaful Co. (Watania)	0.75	610	750	(27.9%)
Insurance House	0.81	58.0	67.0	(19.0%)
Al Khazna Insurance Co.	0.37	73	179	(15.9%)
Arkan Building Materials Co.	1.01	4,442.7	3,910.7	(15.8%)
Abu Dhabi Islamic Bank	5.17	257,773	45,170	(9.3%)

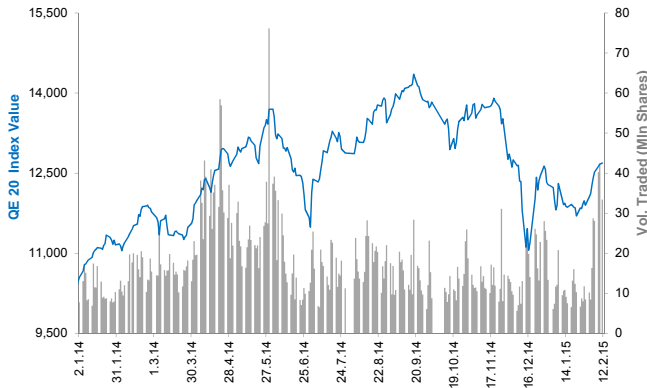
YTD-15 Most Active Stocks by Volume	Price (AED)	YTD-Val ('000 AED)	Volume ('000 Shrs)	YTD-15 Return
Eshraq Properties Co.	0.83	881,269	1,094,970	5.1%
AL DAR Properties Co.	2.58	1,554,140	612,312	(2.6%)
Ras Al Khaimah Properties	0.77	240,518	316,888	4.1%
Dana Gas	0.49	129,077	266,540	(2.0%)
Waha Capital Co.	3.10	486,233	158,348	9.9%

YTD-15 Return: Is a total return which accounts in addition to the change in price the cash & share dividends announced during the year.

Qatar Exchange Daily Report

February 12, 2015

Index Performance relative to Volume



Sectors' Return & Valuation Multiples

	Market Cap. (QAR Mn)	MTD % Chg	P/E (X)	P/B (X)	Yield (%)
Qatar Exchange	685,873	5.7%	16.1	2.2	3.3%
Banking & Finance	271,662	3.1%	14.3	2.3	3.6%
Goods & Consumer Services	31,203	4.6%	17.0	2.5	2.6%
Industrial	201,756	5.7%	18.6	3.5	4.1%
Insurance	22,729	4.0%	8.1	1.8	2.0%
Real Estate	76,901	16.2%	21.7	1.4	1.5%
Telecom	52,654	6.5%	21.5	1.7	2.4%
Transport	28,968	6.4%	14.6	1.6	3.6%

Sectors' MTD Return is based on the Change in market cap. and it might not conform with the benchmark return for each sector

Market Breadth



Top 10 Stocks by Market Capitalization

	Market Cap. (QAR Mn)	P/E (X)	ROE* (%)
1- Qatar National Bank	139,456	13.4	18.8%
2- Industries Qatar	92,263	14.4	19.9%
3- Ezzan Holding Group Co.	47,480	34.7	4.4%
4- Mesaieed Petrochemical Holding Co.	37,124	18.7	14.1%
5- Masraf Al Rayan	36,863	19.6	17.3%
6- Ooredoo (formerly Q-Tel)	36,837	14.2	10.5%
7- Qatar Islamic Bank	26,110	17.5	12.4%
8- Qatar Electricity & Water Co.	21,945	14.6	23.0%
9- Commercial Bank of Qatar	20,845	11.5	12.2%
10- Gulf International Services	19,978	19.3	28.7%

Market Return, Volatility & Trading Indicators

Market Return	Closing Value	DTD Chg	DTD % Chg	MTD % Chg	YTD-15 % Chg
QE 20 Index	12,689.28	21.95	0.2%	6.6%	3.3%
Market Cap (QAR Mn)	685,873	1,693	0.2%	5.7%	1.3%

Benchmark Volatility**

QE 20 Index	QE 20 Volatility Since:				
	Jan-2014	Jan-2013	Jan-2012	Jan-2011	Jan-2010
QE 20 Index	17.2%	16.8%	14.3%	14.3%	14.4%

** Annualized Standard Deviation of Daily Returns

Trading Indicators	Today's Value	DTD Chg	DTD % Chg	Average Daily YTD-15	YTD-14
--------------------	---------------	---------	-----------	----------------------	--------

Volume (*000 Shares)	33,413	(8,952)	(21.1%)	14,844	11,714
Value Traded (QAR Mn)	986	(328)	(25.0%)	611	534
No. of Trades	9,957	(2,393)	(19.4%)	7,171	5,455

Subtotal	478,900	14.18	17.5%
----------	---------	-------	-------

* ROE is based on TTM 9M-2014 Net Profit & Shareholders' Equity as of 30-September-14

Today's Top Movers and Most Active Stocks

Best Return Performers	Price (QAR)	Daily Return	Value (QAR)
Vodafone Qatar	18.71	3.9%	281,611,306
Salam International Investment	15.45	3.1%	11,852,084
Doha Insurance Co.	27.55	2.0%	132,870
Ezzan Holding Group Co.	17.90	1.7%	122,928,099
Qatar National Bank	199.30	1.7%	65,869,794

Worst Return Performers	Price (QAR)	Daily Return	Value (QAR)
Barwa Real Estate Co.	47.55	(3.5%)	76,092,370
Qatar Oman Investment Co.	16.17	(2.3%)	10,319,788
National Leasing Holding	22.00	(2.2%)	6,949,951
Gulf International Services	107.50	(2.0%)	33,727,534
Qatar Industrial Manufacturing Co.	50.00	(2.0%)	3,316,082

Most Active Stocks by Volume	Price (QAR)	Daily Return	Volume (Shares)
Vodafone Qatar	18.71	3.9%	14,940,170
Ezzan Holding Group Co.	17.90	1.7%	6,784,085
Mazaya Qatar R.E Development Co.	20.88	(0.6%)	1,671,865
Barwa Real Estate Co.	47.55	(3.5%)	1,581,800
Qatar Gas Transport Co.	25.20	0.8%	1,071,613

Source: KAMCO Research

YTD-2015 Top Movers and Most Active Stocks

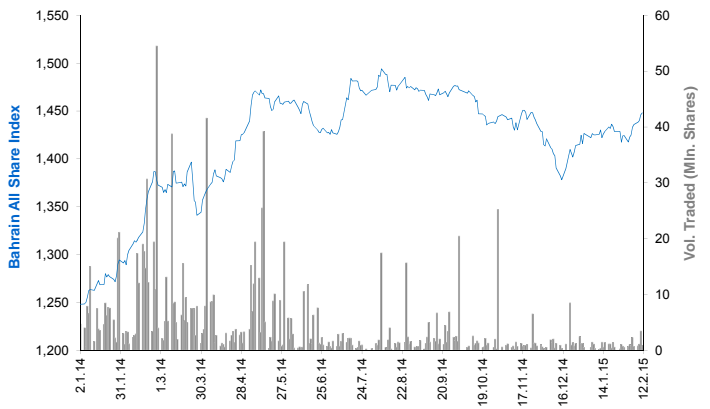
YTD-15 Best Return Performers	Price (QAR)	YTD Value (QAR 000's)	YTD Volume (Shares 000's)	YTD-15 Return
Aamal Co.	18.55	284,582	17,589	22.1%
Ezzan Holding Group Co.	17.90	939,967	57,874	20.0%
Medicare Group	136.00	153,081	1,197	16.2%
Qatar Industrial Manufacturing Co.	50.00	48,573	1,003	15.3%
Vodafone Qatar	18.71	1,199,317	69,863	13.7%

YTD-15 Worst Return Performers	Price (QAR)	YTD Value (QAR 000's)	YTD Volume (Shares 000's)	YTD-15 Return
Industries Qatar	152.50	1,559,075	10,077	(9.2%)
Ooredoo	115.00	327,632	2,821	(7.2%)
Qatar National Bank	199.30	1,259,279	6,230.87	(6.4%)
Doha Insurance Co.	27.55	16,060	596.07	(5.0%)
Islamic Holding Group	120.00	995,699.3	8,646.92	(3.6%)

YTD-15 Most Active Stocks by Vol.	Price (QAR)	YTD Value (QAR 000's)	YTD Volume (Shares 000's)	YTD-15 Return
Vodafone Qatar	18.71	1,199,317	69,863	13.7%
Ezzan Holding Group Co.	17.90	939,967	57,874	20.0%
Barwa Real Estate Co.	47.55	2,556,960	57,630	13.5%
Mazaya Qatar R.E Development Co.	20.88	711,052	35,460	9.0%
Masraf Al Rayan	49.15	824,842	18,035	11.2%

YTD-15 Return: Is a total return which accounts in addition to the change in price the cash & share dividends announced during the year.

Index Performance relative to Volume



Sectors' Return & Valuation Multiples

	Market Cap. (BHD Mn)	MTD % Chg	P/E (X)	P/B (X)	Yield (%)
Bahrain Bourse	8,223	1.8%	12.1	1.0	3.5%
Commercial Banks	3,623	1.9%	13.0	1.5	3.9%
Investment	2,438	2.5%	13.3	0.7	0.8%
Insurance	169	0.0%	10.4	0.8	2.5%
Service	1,069	0.9%	11.7	1.1	5.4%
Hotel & Tourism	210	4.3%	11.8	1.0	4.1%
Industrial	716	0.0%	7.8	0.8	7.3%

Sectors' MTD Return is based on the Change in market cap. and it might not conform with the benchmark return for each sector

Market Breadth	▲	5	▼	1	■	34
----------------	---	---	---	---	---	----

Top 10 Stocks by Market Capitalization

	Market Cap. (BHD Mn)	P/E (X)	ROE* (%)
1- Ahli United Bank (Price in USD)	1,822	10.66	14.1%
2- Arab Banking Corp. (Price in USD)	903	9.28	6.5%
3- National Bank of Bahrain	804	15.06	13.6%
4- Aluminum Bahrain	696	7.68	10.2%
5- Bahrain Telecommunications Co.	549	12.48	8.3%
6- Bank of Bahrain and Kuwait	499	10.43	12.8%
7- Al Baraka Banking (Price in USD)	334	6.00	11.1%
8- United Gulf Bank	325	53.62	3.5%
9- Al Salam Bank	304	19.58	4.9%
10- Gulf Finance House (Price in USD)	226	37.50	2.4%
Subtotal	6,462	11.00	9.6%

* ROE is based on TTM 9M 2014 Net Profit & Shareholders' Equity as of 30-Sep-14

Market Return, Volatility & Trading Indicators

Market Return	Closing Value	DTD Chg	DTD % Chg	MTD % Chg	YTD-15 % Chg
Bahrain All Share Index	1,448.02	1.86	0.1%	1.7%	1.5%
Market Cap (BHD Mln)	8,223.26	17.14	0.2%	1.8%	1.6%

Benchmark Volatility**	Volatility Since:				
	Jan-2014	Jan-2013	Jan-2012	Jan-2011	Jan-2010
Bahrain All Share Index	7.28%	7.0%	6.8%	7.3%	7.8%

** Annualized Standard Deviation of Daily Returns

Trading Indicators	Today's Value	DTD Chg	DTD % Chg	Average Daily YTD-15	YTD-14
Volume ('000 Shares)	805	(2,653)	(76.7%)	957	6,301
Value Traded (BHD '000)	352	(776)	(68.8%)	258	1,207
No. of Trades	70	(8.0)	(10.3%)	38	98

Today's Top Movers and Most Active Stocks

Best Return Performers	Price (BHD)	Daily Return	Value (BHD)
Seef Properties	0.202	4.1%	3,583
Esterad Investment Co.	0.222	2.8%	5,535
Gulf Hotels Group	0.900	1.1%	1,530
Bank of Bahrain and Kuwait	0.484	0.8%	45,377
Bahrain Telecommunications Co.	0.330	0.6%	32,785

Worst Return Performers	Price (BHD)	Daily Return	Value (BHD)
Bahrain Islamic Bank	0.150	(2.0%)	3,010

Most Active Stocks by Volume	Price (BHD)	Daily Return	Volume (Shares)
Ahli United Bank (USD)	0.805	0.0%	297,404
National Bank of Bahrain	0.855	0.0%	120,679
Bahrain Telecommunications Co.	0.330	0.6%	99,347
Bank of Bahrain and Kuwait	0.484	0.8%	94,275
Arab Banking Corporation. (USD)	0.770	0.0%	40,000

Source: KAMCO Research

YTD-2015 Top Movers and Most Active Stocks

YTD-15 Best Return Performers	Price (BHD)	YTD-Val (BHD '000)	YTD Vol (Shares)	YTD-15 Return
Bahrain Toursim Co.	0.246	31	134,850	11.8%
Bahrain National Holding Co.	0.480	37	85,246	11.1%
Esterad Investment Co.	0.222	40	191,836	11.0%
Arab Banking Corporation. (USD)	0.770	65	237,620	10.0%
Gulf Hotels Group	0.900	42	48,488	8.4%

YTD-15 Worst Return Performers	Price (BHD)	YTD-Val (BHD '000)	YTD Vol (Shares)	YTD-15 Return
Investcorp Bank (USD)	451.600	316	1,855	(10.0%)
Aluminum Bahrain	0.490	768.3	1,549,057	(4.9%)
Al-Ahlia Insurance Co.	0.260	11	44,090	(3.7%)
Zain Bahrain B.S.C	0.198	55	278,552	(1.0%)
Bahrain Cinema Co.	1.540	158	102,460	(0.6%)

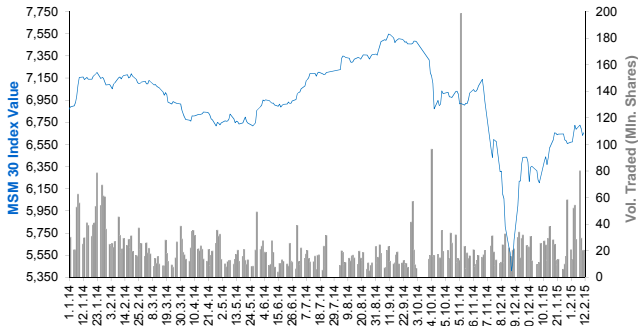
YTD-15 Most Active Stocks by Volume	Price (BHD)	YTD-Val (BHD '000)	YTD Vol (Shares)	YTD-15 Return
Ahli United Bank (USD)	0.805	2,904	9,434,713	3.7%
Al Salam Bank	0.142	715	5,604,598	8.4%
ITHMAR Bank (USD)	0.170	180	2,808,370	6.3%
AlKhaleeji Commercial Bank	0.046	86	1,879,266	7.0%
Aluminum Bahrain	0.490	768	1,549,057	(4.9%)

YTD-15 Return: Is a total return which accounts in addition to the change in price the cash & share dividends announced during the year.

Muscat Securities Market Daily Report

February 12, 2015

Index Performance relative to Volume



Sectors' Return & Valuation Multiples

	Market Cap. (OMR Mn)	MTD % Chg	P/E (X)	P/B (X)	Yield (%)
Muscat Securities Mkt	8,085	1.3%	10.61	1.52	3.7%
Financial	3,879	2.4%	9.26	1.18	3.2%
Industrial	1,308	0.4%	13.13	1.71	4.6%
Services	2,898	0.2%	11.90	2.27	4.0%

Sectors' MTD Return is based on the Change in market cap. and it might not conform with the benchmark return for each sector

Market Breadth	▲	19	▼	7	▬	27
----------------	---	----	---	---	---	----

Top 10 Stocks by Market Capitalization

	Market Cap. (OMR Mn)	P/E (X)	ROE* (%)
1- Bank Muscat	1,345	7.62	13.8%
2- Oman Telecom Co.	1,313	10.45	23.1%
3- Bank Dhofar	494	12.46	12.5%
4- National Bank of Oman	456	9.64	13.5%
5- Ooredoo	448	11.32	20.5%
6- Raysut Cement	360	13.40	19.8%
7- Ahli Bank	289	11.97	13.0%
8- HSBC Bank Oman	278	36.60	2.5%
9- Bank Sohar	264	8.13	17.1%
10- Shell Oman Marketing	200	18.00	36.3%
Subtotal	5,626	10.27	15.2%

* ROE is based on TTM 9M-2014 Net Profit & Shareholders' Equity as of 30-Sep-14

Market Return, Volatility & Trading Indicators

Market Return	Closing Value	DTD Chg	DTD % Chg	MTD % Chg	YTD-15 % Chg
MSM 30 Index	6,655.21	23.41	0.4%	1.5%	4.9%
Market Cap (OMR Mn)	8,084.82	17.26	0.2%	1.3%	4.5%

Benchmark Volatility**	Volatility Since:				
	Jan-2014	Jan-2013	Jan-2012	Jan-2011	Jan-2010
MSM 30 Index	15.8%	12.8%	11.4%	11.6%	11.1%

** Annualized Standard Deviation of Daily Returns

Trading Indicators	Today's Value	DTD Chg	DTD % Chg	Average Daily YTD-15	YTD-14
Volume ('000 Shares)	20,467	281	1.4%	23,684	41,175
Value Traded (OMR '000)	5,680	(2,298)	(28.8%)	7,471	13,067
No. of Trades	1,571	329	26.5%	1,405	2,007

Today's Top Movers and Most Active Stocks

Best Return Performers	Price (OMR)	Daily Return	Value (OMR)
Dhofar Insurance	0.230	4.5%	2,020
United Finance	0.153	4.1%	531,360
ONIC. Holding	0.416	4.0%	152,380
Gulf International Chemicals	0.213	2.9%	92,630
Al Jazeera Services Co.	0.380	2.7%	109,030

Worst Return Performers	Price (OMR)	Daily Return	Value (OMR)
Galfar Engineering	0.172	(3.4%)	153,190
Renaissance Services	0.462	(1.7%)	265,540
Al Madina Investment company	0.073	(1.4%)	1,460
Bank Muscat	0.616	(0.6%)	237,650
Al Jazeera Steel Products Co.	0.348	(0.6%)	6,980

Most Active Stocks by Volume	Price (OMR)	Daily Return	Volume (Shares)
Al Anwar Holding	0.261	1.6%	7,494,757
United Finance	0.153	4.1%	3,478,297
Gulf Investment Services	0.186	1.1%	2,023,864
Galfar Engineering	0.172	(3.4%)	889,702
Oman & Emirates Investment	0.154	0.7%	843,700

Source: KAMCO Research

YTD-2015 Top Movers and Most Active Stocks

YTD-15 Best Return Performers	Price (OMR)	YTD-Value (OMR 000's)	YTD Vol. (Shares 000's)	YTD-15 Return
United Power	2.005	94	48	51.3%
Al Sharqia Inv. Holding	0.189	4,637	27,452	45.4%
Gulf International Chemicals	0.213	1,616	8,561	40.1%
Al Anwar Holding	0.261	35,886	152,036	36.6%
ONIC. Holding	0.416	3,535	9,321	31.6%

YTD-15 Worst Return Performers	Price (OMR)	YTD-Value (OMR 000's)	YTD Volume (Shares 000's)	YTD-15 Return
Port Services Corporation	0.318	72	217	(10.2%)
Global Financial Investment Co.	0.110	2,115	18,315	(9.8%)
Ahli Bank	0.223	1,608	6,930	(9.0%)
Al Anwar Ceramic Tiles Co.	0.460	4,049	8,891	(8.4%)
Al Madina Investment company	0.073	328	4,497	(2.7%)

YTD-15 Most Active Stocks by Volume	Price (OMR)	YTD-Value (OMR 000's)	YTD Volume (Shares 000's)	YTD-15 Return
Al Anwar Holding	0.261	35,886	152,036	36.6%
Gulf Investment Services	0.186	15,851	93,663	31.0%
Oman & Emirates Investment	0.154	7,676	55,335	25.2%
Bank Muscat	0.616	27,333	46,572	5.8%
A Saffa Foods	0.860	38,285	40,121	10.8%

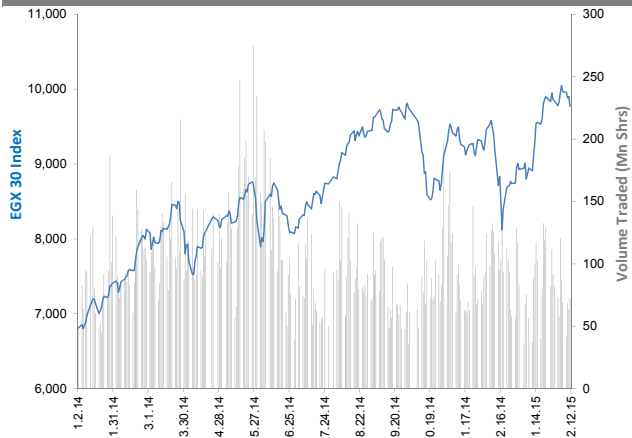
YTD-15 Return: Is a total return which accounts in addition to the change in price the cash & share dividends announced during the year.

The Egyptian Exchange Daily Report

(The bulletin covers the top 60 companies by Mkt. Cap out of 336 listed companies)

February 12, 2015

Index Performance relative to Volume



Sectors' Return & Valuation Multiples

	Market Cap. (EGP Mn)	MTD % Chg	P/E (X)	P/BV (X)	Yield (%)
The Egyptian Exchange	401,724	(1.1%)	24.5	1.8	3.4%
Banking & Finance	76,997	0.5%	11.9	2.6	2.4%
Basic Resources	21,763	0.4%	NM	1.8	3.7%
Chemical	21,688	(0.6%)	7.7	3.1	8.8%
Construction & Material	83,079	(0.2%)	12.5	0.8	5.2%
Financial Services	26,950	(3.3%)	NM	1.3	0.7%
Food & Beverage	10,629	8.4%	20.4	3.0	2.7%
Healthcare & Pharma.	6,268	1.3%	20.1	3.3	3.8%
Ind. Goods, Services, Auto.	18,144	0.4%	67.5	2.4	1.7%
Media	685	(1.1%)	21.8	0.3	0.0%
Oil & Gas	5,037	4.2%	6.2	1.8	15.4%
Personal & Household	19,004	(1.3%)	18.4	1.7	2.7%
Real Estate	46,419	(4.6%)	53.8	1.4	0.2%
Telecommunication	59,653	(2.6%)	NM	2.1	6.0%
Travel & Leisure	5,409	(3.6%)	NM	1.5	0.0%

Sectors' MTD Return is based on the Change in market cap. and it might not conform with the benchmark return for each sector

Top 10 Stocks by Market Capitalization

	Market Cap. (EGP Mn)	P/E (X)	ROE* (%)
1-Orascom Construction Industries (OCI)	61,219	NM	NM
2-Commercial Int'l Bank (Egypt)	49,950	16.6	25.1%
3-T M G Holding	22,328	38.2	2.3%
4-Global Telecom Hldg.	22,189	NM	NM
5-Telecom Egypt	20,314	6.9	10.5%
6-Qatar National Bank AlAhli	16,759	9.4	17.7%
7-ABU Qir Fertilizers & Chemical ind. Co.	12,956	9.2	43.3%
8-EASTERN CO	11,500	15.2	16.9%
9-Elswedy Cables	11,394	NM	2.0%
10-Egyptian Financial Group-Hermes Co.	9,692	NM	NM
Subtotal	177,081	24.71	6.7%

*: ROE is based on Net Profit for the Period FY-13 & Shareholders' Equity as of 31-December-13

Market Return, Volatility & Trading Indicators

Market Return	Closing Value	DTD % Chg	DTD % Chg	MTD % Chg	YTD-15 % Chg
EGX 30 Index	9,770.78	(129.87)	(1.3%)	(0.7%)	9.5%
Market Cap (EGP Mn)	401,724	(5,692)	(1.6%)	(1.1%)	5.7%

Benchmark Volatility**	Since Jan-14	Since Jan-13	Since Jan-12	Since Jan-11	Since Jan-10
EGX 30 Index	21%	21%	24%	26%	26%

** Annualized Standard Deviation of Daily Returns

Trading Indicators	Today's Value	DTD Chg	DTD % Chg	Average Daily YTD-15	YTD-14
Volume (Mn Shares)	73	9.36	14.8%	82	140
Value Traded (EGP Mn)	433	10.9	2.6%	498	472
No. of Trades	13,031	177	1.4%	14,979	15,480

Market Breadth					
	▲	10	▼	44	▬
					6

Today's Top Movers and Most Active Stocks

Best Return Performers	Last Price (EGP)	Daily Return
EASTERN CO	230.00	1.8%
Alexandria Mineral Oils Co.	58.50	0.8%
National Bank of Kuwait - Egypt - NBK	22.49	0.6%
Misr Cement Co.	77.40	0.5%
El Ezz Steel Rebars	16.49	0.5%

Worst Return Performers	Last Price (EGP)	Daily Return
Egyptian Iron & Steel Co.	7.40	(5.0%)
T M G Holding	10.82	(4.8%)
Global Telecom Hldg. (Orascom Telecom)	4.23	(4.3%)
El Kahera Housing	10.10	(4.3%)
Six of October Dev. & Inv. (SODIC)	14.23	(4.2%)

Most Active Stocks By Volume	Last Price (EGP)	Volume ('000 Shrs)
Amer Group Holding	1.21	23,655
Global Telecom Hldg. (Orascom Telecom)	4.23	7,966
Citadel Capital	3.09	6,662
Egyptian Resorts Co.	1.22	4,982
Juhayna Food Industries	11.50	3,963

Source: KAMCO Research

YTD-2015 Top Movers and Most Active Stocks

YTD-15 Best Return Performers	Last Price (EGP)	Volume ('000 Shrs)	YTD-15 Return
Elswedy Cables	51.00	5,434	22.9%
Juhayna Food Industries	11.50	18,091	20.0%
GB AUTO S.A.E	37.00	6,455	19.4%
El Ezz Steel Rebars	16.49	24,723	18.1%
Heliopolis Housing	66.99	7,277	17.1%

YTD-15 Worst Return Performers	Last Price (EGP)	Volume ('000 Shrs)	YTD-15 Return
Orascom Hotels & Development	14.25	7,644.8	(26.7%)
Asec Company for Mining - Ascom	10.30	756.5	(12.7%)
Al Ezz Dekheila Steel Co. Alexandria	510.00	9.1	(12.3%)
National CementCo. - Egypt	12.35	70.7	(8.9%)
Golden Pyramids Plaza Co.	1.79	1.4	(8.7%)

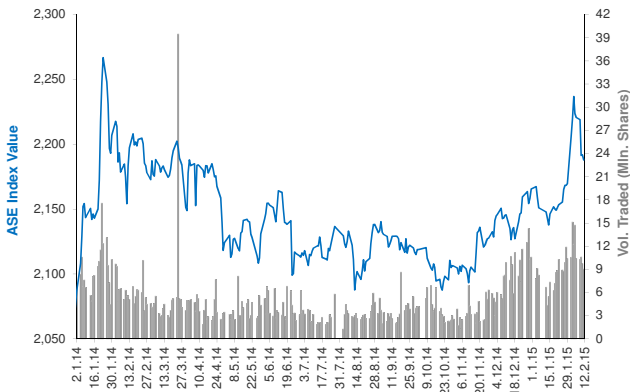
YTD-15 Most Active Stocks by Volume	Last Price (EGP)	Volume ('000 Shrs)	YTD-15 Return
Amer Group Holding	1.21	559,316	(5.47%)
Citadel Capital	3.09	283,140	7.67%
Global Telecom Hldg. (Orascom Telecom)	4.23	213,846	6.55%
Egyptian Resorts Co.	1.22	213,202	0.00%
Palm Hills Developments	4.19	159,495	1.95%

YTD-15 Return: Is a total return which accounts in addition to the change in price the cash & share dividends announced during the year.

Amman Stock Exchange Daily Report (1st Market)

February 12, 2015

Index Performance relative to Volume



Sectors' Return & Valuation Multiples

	Market Cap. (JD Mn)	MTD % Chg	P/E (X)	P/BV (X)	Yield (%)
Amman Stock Exchange	13,841	1.0%	14.9	0.9	3.8%
Banks	9,610	0.0%	10.7	0.8	3.5%
Insurance	98	0.6%	NM	0.9	3.1%
Diversified Financial Services	203	1.7%	NM	0.5	0.8%
Real Estate	319	2.2%	NM	0.8	0.4%
Educational Services	338	(0.7%)	12.7	2.2	4.0%
Hotels and Tourism	153	(1.4%)	26.3	0.7	3.6%
Transportation	104	0.7%	32.5	0.9	2.4%
Technology & Commun.	854	1.8%	17.1	2.3	9.7%
Media	19	(1.2%)	NM	0.5	0.0%
Utilities & Energy	647	2.6%	30.8	2.8	2.8%
Pharmaceutical & Medical Ind.	102	(5.9%)	55.7	1.1	0.0%
Tobacco & Cigarettes	325	(1.6%)	10.3	3.0	7.1%
Mining & Extraction Industries	656	2.0%	NM	0.7	3.3%
Engineering & Construction	107	(0.3%)	37.6	1.6	1.3%
Textiles, Leather & Cloth.	79	1.6%	16.6	0.9	5.1%

Sectors' MTD Return is based on the Change in market cap. and it might not conform with the benchmark return for each sector

Top 10 Stocks by Market Capitalization

	Market Cap. (JD Mn)	P/E (X)	ROE* (%)
1-ARAB BANK	3,902	7.9	6.5%
2-HOUSING BK TRD FIN	2,331	23.4	10.3%
3-JORDAN TELECOM	840	16.3	14.1%
4-JOR ISLAMIC BANK	555	12.3	17.7%
5-JOR PHOSPHATE MN	495	NM	0.2%
6-BANK OF JORDAN	434	10.7	12.9%
7-JOR KUWAIT BANK	424	8.9	11.7%
8-CAIRO AMMAN BANK	376	9.2	15.4%
9-JOR PETROLM REF	356	12.6	22.6%
10-ARAB JOR/INV/BANK	330	21.8	10.9%

Subtotal	10,043	11.58	7.7%
-----------------	---------------	--------------	-------------

* ROE is based on FY-2013 Net Profit & Shareholders' Equity as of 31-December-13

Today's Top Movers and Most Active Stocks

Best Return Performers	Price (JD)	Daily Return
THE UNITED INSURANCE	1.46	7.4%
ARAB ELECTRICAL INDUSTRIES	0.69	4.5%
INT'L ARABIAN DEV. & INVESTMENT TRADING CO.	0.53	3.9%
RUM ALADDIN INDUSTRIES	0.27	3.8%
JORDAN ISLAMIC BANK	3.70	3.6%

Worst Return Performers	Price (JD)	Daily Return
THE JORDAN PIPES MANUFACTURING	1.52	(5.0%)
M. E PHARMA. & CHMICAL IND. & MEDICAL APPLIANCE	1.34	(5.0%)
AD-DULAYL INDUSTRIAL PARK & REAL ESTATE CO.	1.43	(4.7%)
REAL ESTATE DEVELOPMENT	0.21	(4.5%)
ARAB EAST FOR REAL ESTATE INVESTMENTS CO.	1.70	(4.5%)

Most Active Stocks By Volume	Price (JD)	Volume ('000 Shrs)
AD-DULAYL INDUSTRIAL PARK & REAL ESTATE CO.	1.43	2,770
JORDAN INDUSTRIAL RESOURCES	0.54	928
TRANSPORT& INVESTMENT BARTER CO.	0.86	920
SPECIALIZED INVESTMENT COMPOUNDS	0.83	763
EL-ZAY READY WEAR MANUFACTURING	0.35	583

Source: KAMCO Research

Market Return, Volatility & Trading Indicators

Market Return	Closing Value	DTD Chg	DTD % Chg	MTD % Chg	YTD-15 % Chg
ASE Index	2,187.96	(3.93)	(0.2%)	0.8%	1.0%
Market Cap (JD Mn)	13,840.71	13.04	0.1%	1.0%	(0.4%)

Benchmark Volatility**	Since Jan-2014	Since Jan-2013	Since Jan-2012
ASE Index	7.8%	8.2%	7.7%

** Annualized Standard Deviation of Daily Returns

Trading Indicators	Today's Value	DTD Chg	DTD % Chg	Average Daily YTD-15	YTD-14
Volume ('000 Shares)	9,050	(681)	(7.0%)	9,702	8,209
Value Traded (JD '000)	10,244	(319)	(3.0%)	9,137	10,197
No. of Trades	2,896	(531)	(15.5%)	3,095	3,848

Market Breadth	▲ 23	▼ 28	▬ 68
-----------------------	-------------	-------------	-------------

YTD-2015 Top Movers and Most Active Stocks

YTD-15 Best Return Performers	Price (JD)	Volume ('000 Shrs)	YTD-15 Return
AD-DULAYL INDUSTRIAL PARK & REAL ESTATE CO.	1.43	63,088.8	74.4%
UNIVERSAL CHEMICAL INDUSTRIES	0.79	5.6	46.3%
SPECIALIZED INVESTMENT COMPOUNDS	0.83	12,264.6	43.1%
JORDAN VEGETABLE OIL INDUSTRIES	1.38	39.1	25.5%
ARAB EAST FOR REAL ESTATE INVESTMENTS CO.	1.70	218.5	25.0%

YTD-15 Worst Return Performers	Price (JD)	Volume ('000 Shrs)	YTD-15 Return
M. E PHARMA. & CHMICAL IND. & MEDICAL APPLIANCE	1.34	1.3	(32.3%)
AKARY FOR INDUSTRIES & REAL ESTATE INV.	1.94	15.4	(22.7%)
JORDAN DUBAI PROPERTIES	0.55	1,774.9	(16.7%)
ALIA- THE ROYAL JORDANIAN AIRLINES	0.58	2,169.3	(14.7%)
ARAB UNION INTERNATIONAL INSURANCE	0.94	5.1	(13.8%)

YTD-15 Most Active Stocks by Volume	Price (JD)	Volume ('000 Shrs)	YTD-15 Return
AD-DULAYL INDUSTRIAL PARK & REAL ESTATE CO.	1.43	63,089	74.4%
TRANSPORT& INVESTMENT BARTER CO.	0.86	41,549	17.8%
JORDAN INDUSTRIAL RESOURCES	0.54	25,585	10.2%
REAL ESTATE DEVELOPMENT	0.21	16,508	16.7%
SPECIALIZED INVESTMENT COMPOUNDS	0.83	12,265	43.1%

YTD-15 Return: Is a total return which accounts in addition to the change in price the cash & share dividends announced during the year.

Tunisia Stock Exchange Daily Report

February 12, 2015

Index Performance relative to Volume



Sectors' Return & Valuation Multiples

	Market Cap. (DT Mn)	MTD % Chg	P/E (X)	P/B (X)	Yield (%)
Tunis Stock Exchange	16,947	1.5%	20.66	1.93	2.2%
Banking	6,573	2.7%	14.40	1.44	2.3%
Insurance	770	0.0%	18.83	1.52	0.8%
Leasing	502	(0.9%)	11.69	1.17	3.7%
Financial Services	1,340	1.7%	16.28	2.12	2.5%
Industrial	1,242	0.6%	14.19	2.55	2.6%
Chemical Industry	732	(0.6%)	43.96	2.21	4.1%
Food & Beverage	3,408	1.6%	24.88	5.20	1.5%
Retailing	1,514	0.8%	NM	4.36	2.9%
Others	867	(0.4%)	NM	1.07	1.2%

Sectors' MTD Return is based on the Change in market cap. and it might not conform with the benchmark return for each sector

Top 10 Stocks by Market Capitalization

	Market Cap. (DT Mn)	P/E (X)	ROE* (%)
1-Société Frigorifique et Brasserie de Tunis	2,399	21.38	22.0%
2-Banque de Tunisie	1,657	22.13	12.3%
3-Banque Internationale Arabe de Tunisie	1,445	18.11	13.1%
4-Poulina Group Holding	999	14.86	12.1%
5-Banque Attijari De Tunisie	968	11.71	21.3%
6-Delice Holding	931	37.22	24.5%
7-Amen Bank	604	5.68	17.3%
8-Arab Tunisian Bank	529	11.02	9.8%
9-Union Bancaire pour le Commerce et	520	63.63	3.1%
10-One Tech Holding	403	10.14	16.9%

Subtotal	10,454	16.23	14.7%
----------	--------	-------	-------

* ROE is based on Net Profit for the Period FY-13 & Shareholders' Equity as of 31-December-13

Today's Top Movers and Most Active Stocks

Best Return Performers	Price (DT)	Daily Return
Société Essoukna	5.74	4.4%
City Cars	13.00	3.0%
Attijari Leasing Company	23.19	3.0%
Tunisie Leasing	22.44	2.9%
Arab Tunisian Lease	2.82	2.9%

Worst Return Performers	Price (DT)	Daily Return
Les Placements de Tunisie – SICAF	50.20	(2.9%)
Société El Wifack Leasing	15.41	(2.5%)
Automobile Reseau Tunisien et Services	7.38	(2.3%)
Ciments De Bizerte	6.10	(1.6%)
Electrostar	8.14	(1.3%)

Most Active Stocks By Volume	Price (DT)	Volume (Shares)
TelNet Holding	4.73	71,481
Société Moderne de Céramique	2.80	71,115
Banque de Tunisie	11.05	45,874
Société Indust. d'Appareillage et Matériel Electrique	2.20	45,441
Société Frigorifique et Brasserie de Tunis	26.65	36,601

Source: KAMCO Research

Market Return, Volatility & Trading Indicators

Market Return	Closing Value	DTD Chg	DTD % Chg	MTD % Chg	YTD-15 % Chg
Tunisia Index	5,333.49	27.86	0.5%	2.2%	4.8%
Market Cap (DT Mln)	16,947	65.23	0.4%	1.5%	4.6%

Benchmark Volatility	Since Jan-14	Since Jan-13	Since Jan-12
Tunisia Index	6.5%	6.8%	6.9%

Trading Indicators	Today's Value	DTD Chg	DTD % Chg	Average Daily YTD-15	YTD-14
Volume ('000 Shares)	479	(452)	(48.5%)	817	1,208
Value Traded ('000 DT)	3,989	(2,075)	(34.2%)	7,884	8,170
No. of Trades	1,660	(296)	(15.1%)	1,624	1,990

Market Breadth	▲ 32	▼ 18	▬ 14
----------------	------	------	------

YTD-2015 Top Movers and Most Active Stocks

YTD-15 Best Return Performers	Price (DT)	Volume ('000 Shrs)	YTD-15 Return
Arab Tunisian Bank	5.29	234.4	21.1%
Société Frigorifique et Brasserie de Tunis	26.65	2,916.1	18.4%
Electrostar	8.14	771.0	18.1%
City Cars	13.00	114.2	14.0%
Euro-Cycles	18.40	271.3	13.4%

YTD-15 Worst Return Performers	Price (DT)	Volume ('000 Shrs)	YTD-15 Return
Société Tunisienne d'Equipement	8.69	-	(16.5%)
Société Tunis. d'Entreprises de Télécom.	2.89	100.0	(16.2%)
Assurances Salim	22.50	19.2	(14.4%)
Best Lease	1.82	43.4	(12.9%)
Société Immobilière Tuniso-Séoudienne	1.73	254.1	(12.6%)

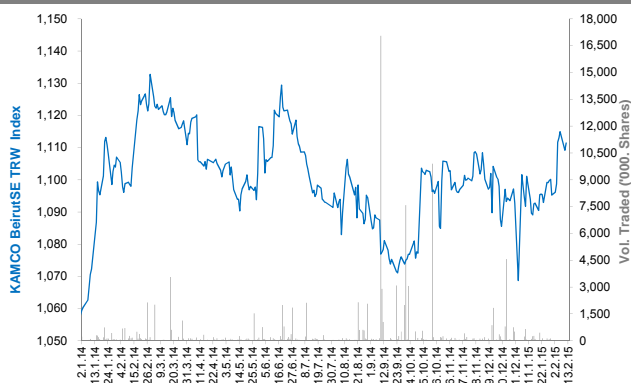
YTD-15 Most Active Stocks by Volume	Price (DT)	Volume ('000 Shrs)	YTD-15 Return
Société Moderne de Céramique	2.80	4,350.6	11.6%
Société Frigorifique et Brasserie de Tunis	26.65	2,916.1	18.4%
Société d'Articles Hygiéniques	11.33	2,616.6	8.2%
Banque de l'Habitat	10.80	1,763.9	5.4%
Banque de Tunisie	11.05	1,445.0	4.7%

YTD-15 Return: Is a total return which accounts in addition to the change in price the cash & share dividends announced during the year.

Beirut Stock Exchange Daily Report

February 12, 2015

Index Performance relative to Volume



Sectors' Return & Valuation Multiples

	Market Cap. (USD Mn)	MTD % Chg	P/E (X)	P/B (X)	Yield (%)
Beirut Stock Exchange	11,417	1.5%	8.59	0.98	4.0%
Banking	9,255	1.6%	8.21	0.97	4.7%
Industrial	332	3.0%	13.16	1.44	4.9%
Trading	35	0.0%	11.56	0.69	8.5%
Real Estate & Construction	1,815	0.4%	9.93	0.98	0.0%

Sectors' MTD Return is based on the Change in market cap. and it might not conform with the benchmark return for each sector

Market Breadth

▲	3	▼	0	▬	27
---	---	---	---	---	----

Top 10 Stocks by Market Capitalization

	Market Cap. (USD Mn)	P/E (X)	ROE* (%)
1- Bank Audi	2,498	10.94	11.3%
2- BLOM Bank	1,946	8.33	15.0%
3- Solidere A	1,102	6.03	9.8%
4- Byblos Bank	950	6.38	9.3%
5- Bank Audi GDR	797	-	-
6- BLOM Bank GDR	732	-	-
7- Solidere B	713	3.90	9.8%
8- Bank Of Beirut	310	5.15	11.0%
9- Holcim Liban	302	13.87	10.2%
10- Byblos Bank Preferred 2008	204	-	-
Subtotal	9,555	7.30	11.2%

*: ROE is based on Net Profit for the period ended December-13 and Shareholders' equity as of 31-December-13

Market Return, Volatility & Trading Indicators

Market Return	Closing Value	DTD Chg	DTD % Chg	MTD % Chg	YTD-15 % Chg
KAMCO BeirutSE TRW Index	1,111.43	2.24	0.2%	1.5%	1.7%
Market Cap (USD Mn)	11,416.93	22.86	0.2%	1.5%	1.7%

Benchmark Volatility	Since Jan-14	Since Jan-13	Since Jan-12
KAMCO BeirutSE TRW Index	7.8%	7.4%	7.1%

Trading Indicators	Today's Value	DTD Chg	DTD % Chg	Average Daily YTD-15	YTD-14
Volume ('000s shares)	140.47	(365)	(72.2%)	169	662
Value Traded ('000s USD)	925.55	(1,644)	(64.0%)	1,353	2,878

Today's Top Movers and Most Active Stocks

Best Return Performers	Price (USD)	Daily Return
Holcim Liban	15.50	3.3%
Solidere A	11.02	1.1%
Solidere B	10.97	0.2%

Worst Return Performers	Price (USD)	Daily Return
No Losers		

Most Active Stocks by Volume	Price (USD)	Volume (Shares)
Byblos Bank	1.68	52,027
Solidere B	10.97	32,521
Bank Audi	6.25	29,010
Solidere A	11.02	26,062
Holcim Liban	15.50	833

Source: KAMCO Research

YTD-2015 Top Movers and Most Active Stocks

YTD Best Return Performers	Price (USD)	YTD Volume (Shares)	YTD-15 Return
Byblos Bank	1.68	2,101,232	5.0%
Bank Audi GDR	6.90	29,365	4.7%
Bank Audi	6.25	252,298	4.2%
BLOM Bank	9.05	509,383	2.8%
BEMO Bank	1.79	123,374	2.3%

YTD Worst Return Performers	Price (USD)	YTD Volume (Shares)	YTD-15 Return
Ciments Blancs B	3.500	450	(6.7%)
Solidere B	10.970	278,323	(3.3%)
Solidere A	11.020	416,109	(2.7%)
Byblos Bank Preferred 2009	101.200	4,646	(0.9%)

YTD Most Active Stocks by Volume	Price (USD)	YTD Volume (Shares)	YTD-15 Return
Byblos Bank	1.68	2,101,232	5.0%
BLOM Bank	9.05	509,383	2.8%
Solidere A	11.02	416,109	(2.7%)
Bank Of Beirut	18.40	415,087	0.0%
Solidere B	10.97	278,323	(3.3%)

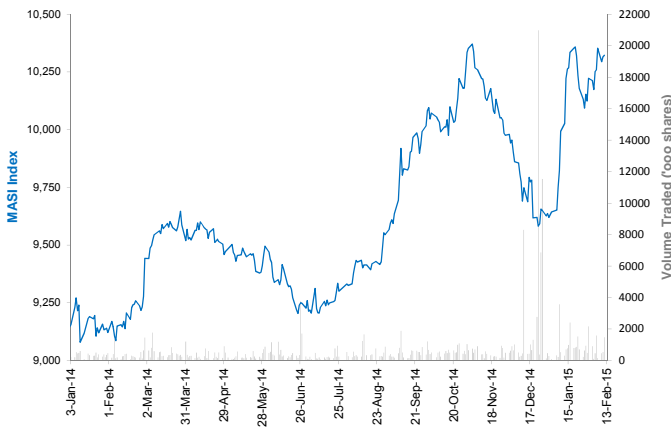
YTD-15 Return: Is a total return which accounts in addition to the change in price the cash & share dividends announced during the year.

Casablanca Stock Exchange Daily Report

(The Bulletin covers the 41 Stocks listed on the Main Market)

February 12, 2015

Index Performance relative to Volume



Market Breadth

▲ 11 ▼ 13 = 17

Top 10 Stocks by Market Capitalization

	Market Cap. (MAD Mn)	P/E (X)	ROE* (%)
1-Itissalat Al-Maghrib	113,403	20.5	36.1%
2-Attijariwafa Bank	74,259	17.9	12.5%
3-Banque Centrale Populaire	40,515	21.6	6.7%
4-Banque Marocaine Du Commerce Exterieur	40,191	32.7	8.3%
5-Ciments Du Maroc	16,024	19.8	13.1%
6-Wafa Assurances	13,825	17.7	19.9%
7-CIE Generale Immobiliere	13,346	36.4	8.2%
8-Holcim Maroc	10,399	27.6	11.4%
9-Banque Marocaine Due Commerce Et De L'Industries	9,879	15.4	7.6%
10-Managem	9,800	24.2	11.6%
Subtotal	341,641	21.13	13.3%

*: ROE is based on Net Profit for the period FY-13 and Shareholders' equity as of 31-December-13

Today's Top Movers and Most Active Stocks

Best Return Performers	Price (MAD)	Daily Return
Managem	1,070.00	4.8%
Credit Immobilier Et Hotelier	350.00	2.2%
TAQA MOROCCO	519.00	2.1%
Holcim Maroc	2,470.00	2.0%
Itissalat Al-Maghrib	129.00	1.6%

Worst Return Performers	Price (MAD)	Daily Return
Alliances Developpement Immobilier	197.40	(6.0%)
Douja Prom Addoha	30.90	(4.9%)
Auto Hall	85.20	(4.1%)
Disway	212.20	(3.5%)
Delta Holding	30.00	(3.2%)

Most Active Stocks By Volume	Price (MAD)	Volume (Shrs)
Douja Prom Addoha	30.90	1,174,772
Itissalat Al-Maghrib	129.00	155,913
Banque Centrale Populaire	234.00	25,496
Credit Immobilier Et Hotelier	350.00	21,688
Banque Marocaine Du Commerce Exterieur	223.95	19,899

Source: KAMCO Research

Sectors' Return & Valuation Multiples

	Market Cap. (MAD Mn)	MTD % Chg	P/E (X)	P/B (X)	Yield (%)
Casablanca Stock Exchange	461,418	1.1%	19.0	2.4	3.7%
Banking	179,230	1.3%	20.6	1.9	2.4%
Beverages	1,881	3.3%	23.7	3.6	2.6%
Chemicals	528	(0.0%)	NM	1.1	0.0%
Construction & Bldg. Material	64,660	2.0%	24.2	3.8	3.3%
Distributors	8,658	(0.2%)	27.7	2.3	2.5%
Electrical & Electronic Equipment	426	0.4%	42.8	0.7	6.3%
Electricity	1,160	4.1%	2.9	0.2	0.0%
Food Producers & Processors	3,617	2.4%	4.8	0.7	14.8%
Holding Companies	2,628	0.0%	23.0	2.0	4.0%
Insurance	22,652	(0.9%)	19.9	3.2	1.9%
Investment & other Finance	3,925	(5.9%)	14.4	1.8	7.0%
Leisures & Hotel	1,837	(3.1%)	NM	2.0	0.0%
Materials, Software & Computer	675	(1.1%)	12.1	0.9	5.8%
Mining	16,713	(0.5%)	13.1	2.8	6.8%
Oil & Gas	10,120	5.6%	NM	1.2	0.0%
Real Estate	25,542	(1.6%)	9.7	1.2	4.5%
Telecommunications	113,403	1.6%	20.5	7.4	5.7%
Transport	408	(2.1%)	11.7	1.5	7.5%
Utilities	3,288	0.2%	11.1	2.0	5.5%
Forestry & Paper	67	(4.3%)	NM	1.1	0.0%

Sectors' MTD Return is based on the Change in market cap. and it might not conform with the benchmark return for each sector

Market Return, Volatility & Trading Indicators

Market Return	Closing Value	DTD Chg	DTD % Chg	MTD % Chg	YTD-15 % Chg
MASI Index	10,322.43	7.1	0.1%	1.0%	7.3%
MADEX Index	8,466.12	7.4	0.1%	1.0%	7.9%
Market Cap (MAD Mn)	461,418	1.3	0.3%	1.1%	6.9%

Benchmark Volatility**	YTD-14	Since Jan-13	Since Jan-12	Since Jan-11	Since Jan-10
MASI Index	7.6%	8.2%	8.8%	9.9%	9.9%
MADEX Index	10.7%	8.0%	8.6%	9.2%	10.2%

** Annualized Standard Deviation of Daily Returns

Trading Indicators	Today's Value	DTD Chg	DTD % Chg	Average Daily YTD-15	YTD-14
Volume ('000 Shares)	1,474.18	936.70	174.3%	880	516
Value Traded (MAD Mn)	51.78	22.88	79.1%	47	70

YTD-2015 Top Movers and Most Active Stocks

YTD Best Return Performers	Price (MAD)	Volume (Shrs)	YTD-15 Return
Holcim Maroc	2,470.00	52,340	29.7%
TAQA MOROCCO	519.00	181,195	22.1%
Lafarge Ciments	1,950.00	59,465	19.9%
Ciments Du Maroc	1,110.00	91,024	18.1%
Les Eaux Minerales d Oulmes	950.00	58	15.4%

YTD Worst Return Performers	Price (MAD)	Volume (Shrs)	YTD-15 Return
Alliances Developpement Immobilier	197.40	262,841	(29.0%)
Douja Prom Addoha	30.90	12,248,240	(17.8%)
Risma	233.00	10,363	(13.4%)
Label Vie	1,200.00	27,864	(10.0%)
Med Paper	25.83	65,774	(7.2%)

YTD Most Active Stocks by Volume	Price (MAD)	Volume ('000 Shrs)	YTD-15 Return
Douja Prom Addoha	30.90	12,248	(17.8%)
Itissalat Al-Maghrib	129.00	3,994	13.4%
Compagnie d'Assurances et de Reassurances ATLANTA	68.00	3,057	4.1%
Banque Centrale Populaire	234.00	1,222	9.7%
Attijariwafa Bank	369.00	1,141	7.3%

YTD-15 Return: accounts in addition to the chg in price the cash & share dividends announced during the year.

Damascus Securities Exchange Daily Report

February 12, 2015

Index Performance relative to Volume



Sectors' Return & Valuation Multiples

	Market Cap. (SRy Mn)	MTD % Chg	P/E (X)	P/B (X)	Yield (%)
Damascus SE	129,570	(1.4%)	6.7	1.1	1.0%
Banking	115,784	(1.5%)	6.42	1.07	0.0%
Services	1,500	0.0%	NM	2.91	0.0%
Industrial	3,613	0.0%	6.80	1.58	0.0%
Insurance	8,134	(0.3%)	8.68	0.99	16.6%
Agricultural	539	0.0%	NM	3.81	0.0%

Sectors' MTD Return is based on the Change in market cap. and it might not conform with the benchmark return for each sector

Market Breadth

▲	2	▼	4	=	18
---	---	---	---	---	----

Top 10 Stocks by Market Capitalization

	Market Cap. (SRy Mn)	Trailing P/E (X)	ROE* (%)
1- Banque Bemo Saudi Fransi	17,638	8.9	22.0%
2- Qatar National Bank - Syria	16,119	1.9	31.9%
3- Bank Audi Syria	13,238	41.8	4.3%
4- Arab Bank- Syria	9,191	8.2	15.9%
5- Bank Of Syria And Overseas	9,160	54.3	2.9%
6- The Int'l Bank For Trade & Finance	8,715	NM	0.0%
7- Syria International Islamic Bank	8,526	44.0	2.0%
8- Byblos Bank Syria	7,650	16.9	6.5%
9- Al Baraka Bank - Syria	6,302	2.4	34.2%
10- Cham Bank	4,866	2.1	31.2%
Subtotal	96,538	6.22	17.5%

* ROE is based on FY-2013 Net Profit & Shareholders' Equity as of 31-December-13

Market Return, Volatility & Trading Indicators

Market Return	Closing Value	DTD Chg.	DTD % Chg.	MTD % Chg.	YTD-15 % Chg.
DSE Weighted Index	1,244.53	(2.83)	(0.2%)	(1.4%)	(2.1%)
Market Cap (SRy Mn)	129,570	(294)	(0.2%)	(1.4%)	(2.1%)

Benchmark Volatility	Since Jan-14	Since Jan-13	Since Jan-12
DSE Weighted Index	5.4%	11.0%	9.7%

** Annualized Standard Deviation of Daily Returns

Trading Indicators	Today's Value	DTD Chg.	DTD % Chg.	Average Daily YTD-15	YTD-14
Volume (Shrs)	89,339	45,751	105.0%	30,086	1,511
Value Traded ('000 SRy)	12,429	7,822	169.8%	3,900	4,750
No. of Trades	59	6.0	11.3%	29	38

Today's Top Movers & Most Active Stocks

Best Return Performers	Price (SRy)	Daily Return
Al Baraka Bank - Syria	126.04	3.3%
Cham Bank	97.32	0.2%

YTD-2015 Top Movers & Most Active Stocks

YTD Best Return Performers	Price (SRy)	YTD Vol. (Shrs)	YTD-15 Return
Alahliah Vegetable Oil Company E.S.A	240.88	18,862	9.5%
Byblos Bank Syria	125.00	2,090	0.4%
Al Baraka Bank - Syria	126.04	127,527	0.1%

Worst Return Performers	Price (SRy)	Daily Return
United Insurance Co.	152.00	(2.0%)
Qatar National Bank Syria	107.46	(1.8%)
Syria International Islamic Bank	100.31	(1.7%)
Fransabank Syria	94.50	(0.8%)

YTD Worst Return Performers	Price (SRy)	YTD Vol. (Shrs)	YTD-15 Return
Qatar National Bank Syria	107.46	139,293	(10.2%)
Syria International Islamic Bank	100.31	139,002	(8.6%)
Cham Bank	97.32	106,347	(6.6%)
United Insurance Co.	152.00	2,000	(2.0%)
Bank of Jordan Syria	88.25	7,320	(1.7%)

Most Active Stocks by Volume	Price (SRy)	Volume (Shrs)
Al Baraka Bank - Syria	126.04	35,395
Bank Of Syria And Overseas	229.00	17,500
Syria International Islamic Bank	100.31	17,083
Qatar National Bank Syria	107.46	10,745
Cham Bank	97.32	3,516

YTD Most Active Stocks by Volume	Price (SRy)	YTD Vol. (Shrs)	YTD-15 Return
Qatar National Bank Syria	107.46	139,293	(10.2%)
Syria International Islamic Bank	100.31	139,002	(8.6%)
Al Baraka Bank - Syria	126.04	127,527	0.1%
Cham Bank	97.32	106,347	(6.6%)
Bank Of Syria And Overseas	229.00	77,170	0.0%

Source: KAMCO Research

YTD-15 Return: Is a total return which accounts in addition to the change in price the cash & share dividends announced during the year.

Disclaimer & Important Disclosures

KAMCO is authorized and fully regulated by the Capital Markets Authority ("CMA") and partially regulated by the Central Bank of Kuwait ("CBK")

This document is provided for informational purposes only. Nothing contained in this document constitutes investment, an offer to invest, legal, tax or other advice or guidance and should be disregarded when considering or making investment decisions. In preparing this document, KAMCO did not take into account the investment objectives, financial situation and particular needs of any particular person. Accordingly, before acting on this document, investors should independently evaluate the investments and strategies referred to herein and make their own determination of whether it is appropriate in light of their own financial circumstances and objectives. The entire content of this document is subject to copyright with all rights reserved. This research and the information contained herein may not be reproduced, distributed or transmitted in Kuwait or in any other jurisdiction to any other person or incorporated in any way into another document or other material without our prior written consent.

Analyst Certification

Each of the analysts identified in this report certifies, with respect to the sector, companies or securities that the individual analyses, that (1) the views expressed in this report reflect his or her personal views about all of the subject companies and securities and (2) no part of his or her compensation was, is or will be directly or indirectly dependent on the specific recommendations or views expressed in this report.

KAMCO Ratings

KAMCO investment research is based on the analysis of regional and country economics, industries and company fundamentals. KAMCO company research reflects a long-term (12-month) target price for a company or stock. The ratings bands are:

- * **Outperform:** Target Price represents expected returns $\geq 10\%$ in the next 12 months
- * **Neutral:** Target Price represents expected returns between -10% and $+10\%$ in the next 12 months
- * **Underperform:** Target Price represents an expected return of $< -10\%$ in the next 12 months

In certain circumstances, ratings may differ from those implied by a fair value target using the criteria above. KAMCO policy is to maintain up-to-date fair value targets on the companies under its coverage, reflecting any material changes to the analyst's outlook on a company. Share price volatility may cause a stock to move outside the rating range implied by KAMCO's fair value target. Analysts may not necessarily change their ratings if this happens, but are expected to disclose the rationale behind their view to KAMCO clients.

Any terms and conditions proposed by you which are in addition to or which conflict with this Disclaimer are expressly rejected by KAMCO and shall be of no force or effect. The information contained in this document is based on current trade, statistical and other public information we consider reliable. We do not represent or warrant that such information is fair, accurate or complete and it should not be relied upon as such. KAMCO has no obligation to update, modify or amend this document or to otherwise notify a recipient thereof in the event that any opinion, forecast or estimate set forth herein, changes or subsequently becomes inaccurate. The publication is provided for informational uses only and is not intended for trading purposes. The information on publications does not give rise to any legally binding obligation and/or agreement, including without limitation any obligation to update such information. You shall be responsible for conducting your own investigation and analysis of the information contained or referred to in this document and of evaluating the merits and risks involved in the securities forming the subject matter of this or other such document. Moreover, the provision of certain data/information in the publication may be subject to the terms and conditions of other agreements to which KAMCO is a party.

Nothing in this document should be construed as a solicitation or offer, or recommendation, to acquire or dispose of any investment or to engage in any other transaction, or to provide any investment advice or service. This document is directed at Professional Clients and not Retail Clients within the meaning of CMA rules. Any other persons in receipt of this document must not rely upon or otherwise act upon it. Entities and individuals into whose possession this document comes are required to inform themselves about, and observe such restrictions and should not rely upon or otherwise act upon this document where it is unlawful to make to such person such an offer or invitation or recommendation without compliance with any authorization, registration or other legal requirements.

Risk Warnings

Any prices, valuations or forecasts are indicative and are not intended to predict actual results, which may differ substantially from those reflected. The value of an investment may go up as well as down. The value of and income from any investment may fluctuate from day to day as a result of changes in relevant economic markets (including, without limitation, foreseeable or unforeseeable changes in interest rates, foreign exchange rates, default rates, prepayment rates, political or financial conditions, etc.).

Past performance is not indicative of future results. Any opinions, estimates, valuations or projections (target prices and ratings in particular) are inherently imprecise and a matter of judgment. They are statements of opinion and not of fact, based on current expectations, estimates and projections, and rely on beliefs and assumptions. Actual outcomes and returns may differ materially from what is expressed or forecasted. There are no guarantees of future performance. Certain transactions, including those involving futures, options, and other derivatives, give rise to substantial risk and are not suitable for all investors. This document does not propose to identify or to suggest all of the risks (direct or indirect) which may be associated with the investments and strategies referred to herein.

Conflict of Interest

KAMCO and its affiliates provide full investment banking services, and they and their directors, officers and employees, may take positions which conflict with the views expressed in this document. Salespeople, traders, and other professionals of KAMCO may provide oral or written market commentary or trading strategies to our clients and our proprietary trading desks that reflect opinions that are contrary to the opinions expressed in this document. Our asset management area, our proprietary trading desks and investing businesses may make investment decisions that are inconsistent with the recommendations or views expressed in this document. KAMCO may have or seek investment banking or other business relationships for which it will receive compensation from the companies that are the subject of this document. Facts and views presented in this document have not been reviewed by, and may not reflect information known to, professionals in other KAMCO business areas, including investment banking personnel. United Gulf Bank, Bahrain owns majority of KAMCO's shareholding and this ownership may create, or may create the appearance of, conflicts of interest.

No Liability & Warranty

KAMCO makes neither implied nor expressed representations or warranties and, to the fullest extent permitted by applicable law, we hereby expressly disclaim any and all express, implied and statutory representations and warranties of any kind, including, without limitation, any warranty as to accuracy, timeliness, completeness, and fitness for a particular purpose and/or non-infringement. KAMCO will accept no liability in any event including (without limitation) your reliance on the information contained in this document, any negligence for any damages or loss of any kind, including (without limitation) direct, indirect, incidental, special or consequential damages, expenses or losses arising out of, or in connection with your use or inability to use this document, or in connection with any error, omission, defect, computer virus or system failure, or loss of any profit, goodwill or reputation, even if expressly advised of the possibility of such loss or damages, arising out of or in connection with your use of this document. We do not exclude our duties or liabilities under binding applicable law.



KAMCO Investment Company – K.S.C (Public)

Al-Shaheed Tower, Khalid Bin Al-Waleed Street- Sharq

P.O. BOX : 28873, Safat 13149, State of Kuwait

Tel: (+965) 1852626 Fax: (+965) 22492395

Email : Kamcoird@kamconline.com