

MENA Markets Daily Report

April 21, 2015

	Country	Benchmark		Index Value	DTD Change	YTD 2015	FY 2014
MENA Countries							
In this Report...	Kuwait	KSE Price Index	▲	6,353.86	0.3%	(2.8%)	(13.4%)
Kuwait 2	Kuwait	KSE Weighted Index	▼	434.99	(0.5%)	(0.9%)	(3.1%)
Saudi Arabia 3	Kuwait	KAMCO TRW Index	▼	2,732.83	(0.6%)	(0.8%)	(1.9%)
UAE - Dubai 4	Saudi Arabia	TADAWUL All Share Index	▼	9,589.42	(0.3%)	15.1%	(2.4%)
UAE - Abu Dhabi 5	UAE - Dubai	DFM General Index	▲	4,095.04	1.8%	8.5%	12.0%
Qatar 6	UAE - Abu Dhabi	ADX General Index	▲	4,657.24	0.7%	2.8%	5.6%
Bahrain 7	Qatar	QE 20 Index	▲	11,915.76	0.2%	(3.0%)	18.4%
Oman 8	Bahrain	Bahrain All Share	▲	1,392.71	0.1%	(2.4%)	14.2%
Egypt 9	Oman	MSM 30 Index	▲	6,325.25	0.6%	(0.3%)	(7.2%)
Jordan 10	Egypt	EGX 30	▼	8,595.78	(1.9%)	(3.7%)	31.6%
Tunisia 11	Jordan	ASE Index	▲	2,155.09	0.0%	(0.5%)	4.8%
Lebanon 12	Lebanon	KAMCO Beirut SE TRW Index	▼	1,136.70	(0.4%)	4.0%	3.5%
Morocco 13	Tunisia	Tunisia Index	▼	5,399.32	(0.1%)	6.1%	16.2%
Syria 14	Morocco	MASI	▲	9,915.53	0.2%	3.1%	5.6%
	Syria	DSE Weighted Index	▼	1,218.94	(0.3%)	(4.1%)	1.7%
Emerging Markets							
	China	SSE Composite Index	▼	4,217.08	(1.6%)	31.0%	52.9%
	Russia	RUSSIAN RTS INDEX (\$)	▼	995.70	(0.3%)	25.9%	(45.2%)
	India	SENSEX	▼	27,886.21	(2.0%)	1.1%	29.9%
	Brazil	BOVESPA Stock Index	▼	53,761.27	(0.4%)	7.5%	(2.9%)
	Mexico	BOLSA Index	▲	45,077.81	0.2%	4.5%	1.0%
	Korea	KOSPI Index	▲	2,146.71	0.2%	12.0%	(4.8%)
	Taiwan	TAIEX Index	▼	9,552.85	(0.2%)	2.4%	8.1%
Global Markets							
	World	MSCI World Index	▲	1,779.12	0.6%	4.1%	2.9%
	Asia	MSCI Asia Pacific	▼	152.28	(0.9%)	10.5%	(2.5%)
	Europe	DJ Stoxx 600	▲	406.87	0.8%	18.8%	4.4%
	Europe	FTSEurofirst 300	▲	1,620.43	0.8%	18.4%	4.0%
	Emerging Markets	MSCI EM Index	▼	1,033.77	(0.9%)	8.1%	(4.6%)
	U.S.A	S&P 500	▲	2,100.40	0.9%	2.0%	11.4%
	U.S.A	DJIA	▲	18,034.93	1.2%	1.2%	7.5%
	U.S.A	NASDAQ Composite	▲	4,994.60	1.3%	5.5%	13.4%
	UK	FTSE 100	▲	7,052.13	0.8%	7.4%	(2.7%)
	Germany	DAX	▲	11,891.91	1.7%	21.3%	2.7%
	Japan	NIKKEI 225	▼	19,634.49	(0.1%)	13.8%	7.1%
	Hong Kong	HANG SENG INDEX	▼	27,094.93	(2.0%)	16.9%	1.3%
Commodities							
	Oil	OPEC Crude	▲	59.52	1.1%	14.5%	(49.6%)
	Oil	Brent	=	63.45	0.0%	3.4%	(45.6%)
	Oil	Kuwait	▲	59.34	0.8%	12.7%	(51.7%)
	Natural Gas	NYMEX Natural Gas (USD/MMBtu)	▼	2.54	(3.7%)	(12.2%)	(33.8%)
	Gold	Gold Spot \$/Oz	▼	1,194.57	(0.7%)	0.7%	(1.4%)

Source: Bloomberg & KAMCO Research

Investment Research Department
Kamcoird@kamconline.com

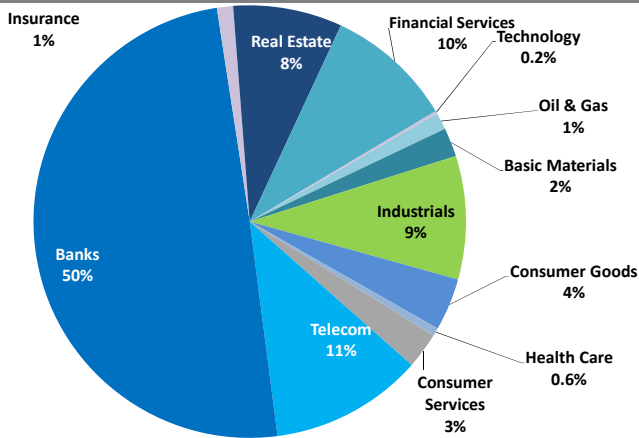
P.O.Box 28873, Safat 13149 Kuwait
Tel: (965) 1852626, Extn: 1153 / 1146
Fax: (965) 22492395

<http://www.kamconline.com>

KAMCO Investment Company - K.S.C
(Public)

Kuwait Market Daily Report

Sector Weight by Market Cap



Top 10 Kuwaiti Companies by Market Capitalization

Company Name	Market Cap. (Mn KWD)	P/E (X)	ROE* (%)
1- National Bank of Kuwait	4,283.8	16.4	10.4%
2- Kuwait Finance House	3,240.2	25.6	7.2%
3- Zain	2,160.7	11.1	12.0%
4- Ahli United Bank - Bahrain	1,386.8	10.1	13.9%
5- Kuwait Food Co. (Americana)	1,069.3	20.6	14.3%
6- Burgan Bank	932.5	15.1	9.3%
7- Boubayan Bank	918.1	32.5	9.5%
8- Commercial Bank of Kuwait	903.6	18.4	8.9%
9- Kuwait Projects Co.	898.9	19.5	8.9%
10- Ahli United Bank - Kuwait	881.9	18.8	14.4%
Total	16,676	16.60	10.5%

*: ROE is calculated based on FY2014 net profit & shareholders' equity as of 31-December-14

Top Movers and Most Active Stocks

Today's Top % Gainers	Close (KWD)	Change (KWD)	Percent Change
Gulf Franchising Co.	0.056	0.005	9.8%
Mashaer Holding Co.	0.114	0.010	9.6%
Automated Systems Co.	0.540	0.045	9.1%
Kuwait Resorts Co.	0.108	0.008	8.0%
Kuwait Cable Vision	0.029	0.002	7.4%

Today's Top % Losers	Close (KWD)	Change (KWD)	Percent Change
Specialities Group Holding Co.	0.114	(0.010)	(8.1%)
NOOR Financial Investment Co.	0.080	(0.005)	(5.9%)
National Cleaning Co.	0.053	(0.003)	(5.4%)
Al Rai Media Group Co.	0.108	(0.006)	(5.3%)
Al Qurain Holding Co.	0.013	(0.000)	(3.8%)

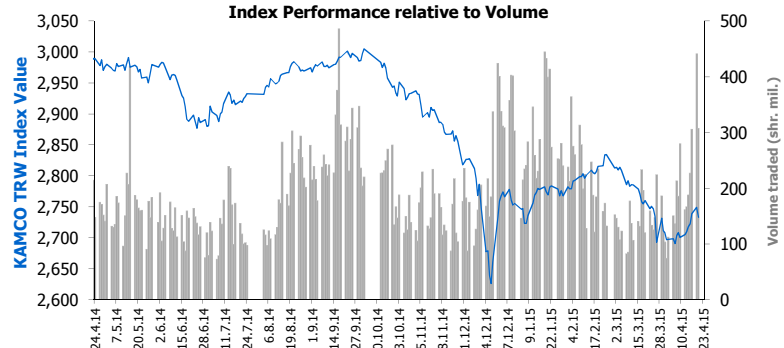
Today's Most Active by Volume	Close (KWD)	Change (KWD)	Volume (Shares)
Investors Holding Group Co.	0.035	(0.001)	55,488,439
Hits Telecom Holding Co.	0.035	(0.000)	31,489,872
National Ranges Co. (MAYADEEN)	0.033	(0.001)	26,930,528
Al-Madina for Finance & Investment Co.	0.059	0.003	24,978,100
Ektitab Holding Co.	0.048	0.000	20,591,784

Source: KAMCO Research

Market Capitalization - Sectors' Return

	Market Cap. (KWD Mn)	DTD %	DTD % Chg	MTD % Chg	YTD % Chg
Kuwaiti Stock Exchange	29,431.2	▼	(0.5%)	3.5%	(0.9%)
Oil & Gas	377.6	▼	(0.4%)	2.0%	(3.5%)
Basic Materials	632.8	▲	0.7%	3.7%	(2.5%)
Industrials	2,712.1	▼	(0.5%)	(1.7%)	(0.6%)
Consumer Goods	1,154.0	▲	0.7%	(1.5%)	(5.2%)
Health Care	175.0	▲	0.2%	1.3%	(4.8%)
Consumer Services	797.8	▲	0.1%	(2.1%)	2.6%
Telecommunications	3,356.5	▲	0.3%	4.2%	0.3%
Banks	14,605.4	▼	(1.3%)	6.0%	0.1%
Insurance	355.6	=	0.0%	(1.0%)	(0.3%)
Real Estate	2,397.5	▲	1.1%	3.5%	0.2%
Financial Services	2,809.1	▲	0.1%	(0.1%)	(6.8%)
Technology	57.8	▲	2.9%	5.1%	2.6%

Market Breadth	▲	44	▼	44	=	105
Benchmark Return	Closing Value	DTD Chg	DTD % Chg	MTD % Chg	YTD % Chg	
KAMCO TRWI	2,732.83	(16.4)	(0.6%)	0.9%	(0.8%)	
KSE Price Index	6,353.86	17.2	0.3%	1.1%	(2.8%)	
KSE Weighted Index	434.99	(2.3)	(0.5%)	1.8%	(0.9%)	
Kuwait 15 Index	1,054.79	(6.7)	(0.6%)	3.3%	(0.5%)	
Market Cap (KWD Mn)	29,431	(154.1)	(0.5%)	3.5%	(0.9%)	



Market Trading Data and Volatility

Trading Indicators	Today's Value	DTD Chg	DTD % Chg	Average Daily YTD 2015	YTD 2014
Volume (Shrs Mn)	307.3	(134.2)	(30.4%)	210.8	282.5
Value Traded (KWD Mn)	22.1	(17.9)	(44.8%)	21.4	32.1
No. of Trades	5,693	(2,866.0)	(33.5%)	5,006	5,809

Market Volatility**	Volatility Since January:				
	2014	2013	2012	2011	2010
KAMCO TRW Index	7.0%	6.3%	6.0%	7.0%	7.7%
KSE Price Index	10.2%	11.0%	10.2%	9.8%	9.8%
KSE Weighted Index	10.4%	9.2%	8.8%	10.0%	10.8%

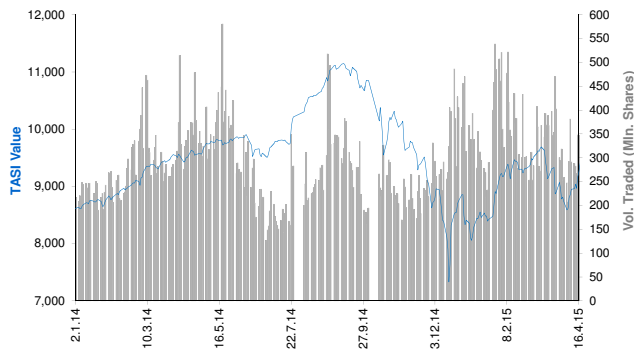
** Annualized Standard Deviation of Daily Returns

Today's Most Active by Value	Close (KWD)	Change (KWD)	Value (KWD)
National Bank of Kuwait	0.850	(0.020)	2,368,346
Investors Holding Group Co.	0.035	(0.001)	1,926,379
kuwait Telecommunication Co.	0.900	0.020	1,627,770
Al-Madina for Finance & Investment Co.	0.059	0.003	1,441,422
Hits Telecom Holding Co.	0.035	(0.000)	1,099,747

Saudi Tadawul Daily Report

April 21, 2015

Index Performance relative to Volume



Top 10 Stocks by Market Capitalization

	Market Cap. (SAR Mn)	P/E (X)	ROE* (%)
1- Saudi Basic Industries Corp	287,160	12.3	11.0%
2- Saudi Telecom	137,940	12.5	18.1%
3- National Commercial Bank	136,020	15.7	18.4%
4- Al-Rajhi Bank	101,888	14.9	16.3%
5- Saudi Electricity Co.	80,915	22.4	6.1%
6- Kingdom Holding Co.	73,191	NM	2.7%
7- Jabal Omar Development Company	71,898	NM	NM
8- Samba Financial Group	59,760	11.9	12.9%
9- AL-Marai Co.	57,612	34.4	14.4%
10- SABB	55,500	13.0	16.4%

* ROE is based on FY2014 Net Profit & Shareholders' Equity as of 31-December-14

Today's Top Movers and Most Active Stocks

Best Return Performers	Price (SAR)	Daily Return	Value (SAR 000's)
Allied Cooperative Ins. Group	35.26	7.6%	92,941
Mediterranean & Gulf Ins. & Re-ins Co.	63.79	5.7%	141,644
AXA Cooperative Insurance Co.	21.31	5.5%	69,637
Al-Hokair Group for Tourism and Dev. Co.	85.89	4.9%	108,004
Fawaz Abdulaziz Al-Hokair Co.	112.90	4.6%	127,404

Worst Return Performers	Price (SAR)	Daily Return	Value (SAR 000's)
Solidarity Saudi Takaful co.	17.05	(9.9%)	82,601
United Electronics Co.	94.90	(9.7%)	106,014
Dallah Healthcare Holding Co.	133.45	(5.4%)	16,778
National Industrialization Co	23.79	(5.4%)	254,333
National Petrochemical Co.	25.67	(5.0%)	21,426

Most Active Stocks By Volume	Price (SAR)	Daily Return	Volume ('000 Shrs)
Dar Al Arkan Real Estate Dev. Co.	8.99	(3.2%)	53,138
Alinma Bank	24.34	(0.9%)	43,878
Saudi Kayan	11.70	(1.7%)	25,431
ZAIN KSA	11.79	3.7%	24,050
Sahara Petrochemical Co.	15.28	(2.9%)	14,330

Source: KAMCO Research

Sectors' Return & Valuation Multiples

	Market Cap. (SAR Mn)	MTD Return	P/E (X)	P/BV (X)	Yield (%)
Saudi Stock Exchange	2,096,582	9.4%	18.6	2.1	2.8%
Banks & Financial	597,027	10.4%	14.4	2.1	1.7%
Petrochemical Industries	473,237	11.1%	13.8	1.5	4.9%
Cement	91,097	2.6%	14.7	2.9	6.0%
Retail	98,175	8.7%	35.7	7.0	1.4%
Energy & Utilities	83,247	10.8%	22.1	1.4	3.7%
Agric. & Food Ind.	137,923	11.4%	27.8	4.6	1.8%
Telecom	177,415	9.4%	21.4	2.0	4.6%
Insurance	52,916	8.8%	61.8	2.6	0.1%
Multi-Inv.	80,735	(2.0%)	70.8	2.1	2.5%
Indust. Inv.	81,904	16.7%	28.2	1.8	1.2%
Bldg. & Const.	29,463	5.8%	45.0	2.6	2.3%
Real Estate Dev.	135,363	4.8%	48.0	2.5	0.7%
Transport	22,930	14.7%	26.9	2.1	2.0%
Media & Publishing	4,018	6.5%	NM	1.6	0.0%
Hotel & Tourism	31,133	11.8%	21.8	5.7	2.4%

Sectors' MTD Return is based on the Change in market cap. and it might not conform with the benchmark return for each sector

Market Return, Volatility & Trading Indicators

Market Return	Closing Value	DTD Chg	DTD % Chg	MTD % Chg	YTD-15 % Chg
Tadawul All Share Index	9,589.42	(30.5)	(0.3%)	9.2%	15.1%
Market Cap (SAR Mn)	2,096,582	(1,628.0)	(0.1%)	9.4%	15.5%

Benchmark Volatility**	Since Jan-14	Since Jan-13	Since Jan-12	Since Jan-11	Since Jan-10
Tadawul All Share Index	20.9%	17.3%	16.1%	17.0%	16.7%

** Annualized Standard Deviation of Daily Returns

Trading Indicators	Today's Value	DTD Chg	DTD % Chg	Average Daily YTD-15	YTD-14
Volume (Mn Shares)	411	(140)	(25.4%)	346	283
Value Traded (SAR Mn)	11,160	(3,693)	(24.9%)	8,881	7,934
No. of Trades	165,527	(33,293)	(16.7%)	150,608	132,464

Market Breadth	▲ 59 ▼ 101 = 7
----------------	----------------

YTD-2015 Top Movers and Most Active Stocks

YTD-15 Best Return Performers	Price (SAR)	YTD Val (SAR Mn)	YTD Vol ('000 Shrs)	YTD-15 Return
Al Hassan Ghazi Ibrahim Shaker	82.34	1,728	23,175	147.5%
Saudi United Cooperative Ins. Co.	21.04	2,015	86,190	134.4%
The Co for Cooperative Ins.	93.65	5,438	72,152	87.0%
Buruj Cooperative Insurance Co.	31.03	2,376	52,646	80.1%
Al-Babtain Power & Telecom. Co.	47.97	1,732	45,390	77.1%

YTD-15 Worst Return Performers	Price (SAR)	YTD Val (SAR Mn)	YTD Vol ('000 Shrs)	YTD-15 Return
Middle East Specialised Cables	14.85	9,490	485,194	(32.2%)
Solidarity Saudi Takaful co.	17.05	5,460	261,940	(16.0%)
Aljazira Takaful Taawuni Co.	56.06	4,524	77,819	(13.5%)
National Industrialization Co	23.79	5,421	209,466	(11.0%)
Eastern Province Cement Co.	49.42	1,268	22,601	(10.8%)

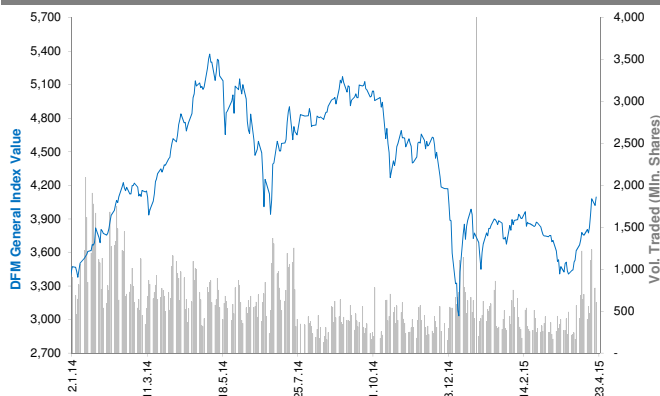
YTD-15 Most Active Stocks by Volume	Price (SAR)	YTD Val (SAR Mn)	YTD Vol ('000 Shrs)	YTD-15 Return
Dar Al Arkan Real Estate Dev. Co.	8.99	43,864	4,657,077	10.4%
Alinma Bank	24.34	62,074	2,787,081	20.0%
Saudi Kayan	11.70	18,069	1,445,653	6.4%
ZAIN KSA	11.79	11,803	1,403,313	(1.1%)
Saudi Arabian Mining Co.	44.42	35,602	921,220	46.2%

YTD-15 Return: Is a total return which accounts in addition to the change in price the cash & share dividends announced during the year.

Dubai Financial Market Daily Report

April 21, 2015

Index Performance relative to Volume



Top 10 Stocks by Market Capitalization

	Market Cap (AED Mn)	P/E (X)	ROE* (%)
1- EMAAR Properties	58,423	15.8	11.2%
2- Emirates NBD	55,244	10.8	11.0%
3- EMAAR MALLS GROUP	39,563	29.3	9.8%
4- Dubai Islamic Bank	27,281	10.3	17.1%
5- Emirates Integrated Telecom. (DU)	23,131	11.0	26.9%
6- Mashreq Bank	19,444	8.1	14.9%
7- DAMAC Properties Dubai	18,389	5.1	71.6%
8- Dubai Financial Market	16,080	21.2	9.0%
9- Commercial Bank of Dubai	14,014	11.7	15.4%
10- Dubai Investment	11,298	8.4	13.3%
Subtotal	301,449	12.23	14.1%

* ROE is based on FY2014 Net Profit & Shareholders' Equity as of 31-December-14

Today's Top Movers and Most Active Stocks

Best Return Performers	Price (AED)	Daily Return	Value Traded (AED)
DAMAC Properties Dubai	3.310	11.8%	497,411,461
Al-Madina for Finance & Investment	0.660	8.2%	6,280,379
Aramex	3.640	5.5%	38,727,191
Emirates NBD	9.940	4.4%	4,033,227
Arabtec Holding P.J.S.C.	3.000	3.4%	133,554,071

Worst Return Performers	Price (AED)	Daily Return	Value Traded (AED)
Takaful Emarat	1.650	(2.9%)	370,496
Marka	1.210	(2.4%)	82,319
Dubai Islamic Ins.& Reins Co.(AMAN)	0.693	(1.1%)	329,715
Dubai Investment	2.790	(0.7%)	51,530,517
Takaful House	0.645	(0.6%)	151,670

Most Active Stocks by Volume	Price (AED)	Daily Return	Volume Traded ('000 Shrs)
DAMAC Properties Dubai	3.310	11.8%	159,417
Union Properties	1.310	1.6%	79,423
Deyaar Development	0.820	1.2%	55,355
Arabtec Holding P.J.S.C.	3.000	3.4%	45,124
Gulf General Investment Co.	0.869	3.3%	43,789

Source: KAMCO Research

Sectors' Return & Valuation Multiples

	Market Cap. (AED Mn)	MTD % Chg	P/E (X)	P/BV (X)	Yield (%)
Dubai Financial Market	374,906	13.2%	12.8	1.5	2.0%
Banking	130,701	7.3%	10.7	1.3	2.4%
Consumer Staples	9,151	5.4%	NM	1.2	0.6%
Investment & Financial	31,133	28.2%	16.1	1.3	2.1%
Insurance	6,082	1.7%	7.1	0.6	2.2%
Industrial	4,615	7.6%	19.9	0.6	1.9%
Real Estate & Construction	139,739	21.8%	NM	2.0	0.7%
Telecommunication	23,449	3.5%	11.6	2.7	6.0%
Transportation	27,002	3.5%	17.8	1.4	3.3%
Services	3,035	10.9%	2.7	0.6	1.1%

Sectors' MTD Return is based on the Change in market cap. and it might not conform with the benchmark return for each sector

Market Breadth	27	5	=	28
-----------------------	-----------	----------	----------	-----------

Market Return, Volatility & Trading Indicators

Market Return	Closing Value	DTD Chg	DTD % Chg	MTD % Chg	YTD-15 % Chg
DFM General Index	4,095.04	73.56	1.8%	16.5%	8.5%
Market Cap (AED Mn)	374,906	6,860	1.9%	13.2%	11.9%

Benchmark Volatility**	Volatility Since:				
	Jan-2014	Jan-2013	Jan-2012	Jan-2011	Jan-2010
DFM General Index	35.9%	30.6%	27.3%	25.4%	24.6%

** Annualized Standard Deviation of Daily Returns

Trading Indicators	Today's Value	DTD Chg	DTD % Chg	Average Daily YTD-15	YTD-14
Volume (Mn Shares)	604	(172.0)	(22.2%)	435	912
Value Traded (AED Mn)	1,287	(285.4)	(18.1%)	668	1,790
No. of Trades	9,188	(3,438)	(27.2%)	6,780	10,557

YTD-2015 Top Movers and Most Active Stocks

YTD-15 Best Return Performers	Price (AED)	Value Traded (AED '000)	Volume ('000 Shrs)	YTD-15 Return
Takaful Emarat	1.650	154,886	125,452	106.3%
Al-Madina for Finance & Investment	0.660	92,138	201,279	82.8%
Al Salam Bank - Bahrain	1.370	679,637	533,701	44.9%
United Kaipara Dairies Co.	6.880	8	1	32.3%
Gulfa Mineral Water & Processing Industrie	3.330	97	32	32.1%

YTD-15 Worst Return Performers	Price (AED)	Value Traded (AED '000)	Volume ('000 Shrs)	YTD-15 Return
Int'l Financial Advisors Co.	0.430	2,059	3,994	(49.4%)
Gulf Navigation Holding	0.271	149,232	465,259	(30.9%)
Gulf Finance House	0.233	2,807,863	10,248,540	(22.1%)
National General Insurance	3.310	74	21	(17.3%)
Ajman Bank	2.540	127,745	52,840	(9.3%)

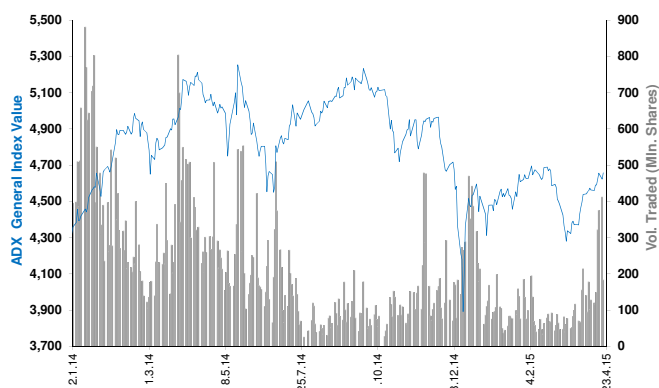
YTD-15 Most Active Stocks by Volume	Price (AED)	Value Traded (AED '000)	Volume ('000 Shrs)	YTD-15 Return
Gulf Finance House	0.233	2,807,863	10,248,540	(22.1%)
Union Properties	1.310	3,557,184	3,073,273	8.3%
Arabtec Holding P.J.S.C.	3.000	8,605,856	2,961,343	2.4%
Deyaar Development	0.820	1,904,150	2,414,956	(3.5%)
DAMAC Properties Dubai	3.310	5,892,593	2,214,322	18.6%

YTD-15 Return: Is a total return which accounts in addition to the change in price the cash & share dividends announced during the year.

Abu Dhabi Securities Exchange Daily Report

April 21, 2015

Index Performance relative to Volume



Top 10 Stocks by Market Capitalization

	Market Cap. (AED Mn)	P/E (X)	ROE* (%)
1- Emirates Telecom. Co.	98,273	11.1	21.0%
2- First Gulf Bank	68,625	12.1	16.6%
3- National Bank Of Abu Dhabi	56,597	10.1	14.7%
4- Abu Dhabi Commercial Bank	41,855	10.3	15.3%
5- AL DAR Properties Co.	21,858	9.8	12.4%
6- Union National Bank	16,949	8.5	11.9%
7- Abu Dhabi Islamic Bank	15,601	8.9	12.8%
8- National Bank of Ras Al-Khaimah	13,410	9.2	20.4%
9- United Arab Bank	6,875	11.4	20.8%
10- National Bank of Fujairah	5,929	11.7	15.0%
Subtotal	345,971	10.57	16.1%

* ROE is based on FY2014 Net Profit & Shareholders' Equity as of 31-December-14

Today's Top Movers and Most Active Stocks

Best Return Performers	Price (AED)	Daily Return	Value (AED)
National Corp for Tourism & Hotels	6.10	14.0%	5,063
Sharjah Islamic Bank	1.79	4.7%	324,293
Abu Dhabi Commercial Bank	7.48	3.6%	9,277,996
Union National Bank	6.16	3.5%	22,054,093
Green Crescent Insurance Co.	0.61	3.4%	55,317

Worst Return Performers	Price (AED)	Daily Return	Value (AED)
Ras Al Khaimah White Cement	1.17	(10.0%)	1,253
AGTHIA Group	7.20	(2.7%)	4,027,546
Dana Gas	0.47	(2.1%)	12,344,512
Abu Dhabi National Co. for Bldg. Materials	0.65	(1.5%)	22,416
Bank Of Sharjah	1.60	(1.2%)	28,207,049

Most Active Stocks by Volume	Price (AED)	Daily Return	Volume ('000 Shrs)
Eshraq Properties Co.	0.97	1.0%	80,523
AL DAR Properties Co.	2.78	1.1%	30,719
Dana Gas	0.47	(2.1%)	26,319
Bank Of Sharjah	1.60	(1.2%)	17,626
Ras Al Khaimah Properties	0.73	0.0%	7,244

Source: KAMCO Research

Sectors' Return & Valuation Multiples

	Market Cap. (AED Mn)	MTD % Chg	P/E (X)	P/BV (X)	Dividend Yield (%)
ADX	454,260	2.6%	8.5	1.4	4.3%
Banks	246,539	4.7%	10.7	1.5	3.9%
Inv. & Financial Services	5,338	(6.5%)	0.3	1.2	3.6%
Real Estate	25,573	20.0%	13.7	1.1	3.2%
Energy	8,082	6.1%	NM	0.6	7.7%
Consumer Staples	5,655	1.5%	66.6	1.9	1.0%
Industrial	12,693	1.0%	17.2	0.9	3.7%
Insurance	9,242	0.1%	NM	1.1	4.3%
Telecommunication	131,160	(3.0%)	11.7	1.9	5.5%
Services	9,977	0.6%	15.4	0.6	3.7%

Sectors' MTD Return is based on the Change in market cap. and it might not conform with the benchmark return for each sector

Market Breadth	▲	16	▼	6	=	43
----------------	---	----	---	---	---	----

Market Return, Volatility & Trading Indicators

Market Return	Closing Value	DTD Chg	DTD % Chg	MTD % Chg	YTD-15 % Chg
ADX General Index	4,657.24	34.04	0.7%	4.2%	2.8%
Market Cap (AED Mn)	454,260	3,568	0.8%	2.6%	(2.1%)

Benchmark Volatility**	Volatility Since:				
	Jan-2014	Jan-2013	Jan-2012	Jan-2011	Jan-2010
ADX General Index	20.7%	15.9%	13.5%	12.7%	12.1%

** Annualized Standard Deviation of Daily Returns

Trading Indicators	Today's Value	DTD Chg	DTD % Chg	Average Daily YTD-15	YTD-14
Volume (Mn Shares)	183	(228.5)	(55.5%)	104	367.5
Value Traded (AED Mn)	332	(211.9)	(38.9%)	231	896.6
No. of Trades	2,322	(969)	(29.4%)	1,846	4,491

YTD-2015 Top Movers and Most Active Stocks

YTD-15 Best Return Performers	Price (AED)	YTD-Val ('000 AED)	Volume ('000 Shrs)	YTD-15 Return
Ras Al Khaimah Ceramic Co.	3.88	223,769	61,702	29.3%
Eshraq Properties Co.	0.97	2,567,239	3,086,406	22.8%
National Corp for Tourism & Hotels	6.10	1,784	300	22.7%
AGTHIA Group	7.20	145,582	21,016	16.1%
Ras Al Khaimah Poultry & Feeding Co.	1.45	65	45	14.2%

YTD-15 Worst Return Performers	Price (AED)	YTD-Val ('000 AED)	Volume ('000 Shrs)	YTD-15 Return
Abu Dhabi National Hotels	2.42	1,494	534	(39.5%)
Al Dhafra Insurance Co.	5.27	331	57	(31.6%)
Ooredoo	100.00	2,188	18	(30.3%)
National Takaful Co. (Watania)	0.75	1,317	1,689	(27.9%)
National Bank of Umm Al-Qaiwain	3.00	11,456	3,812	(20.0%)

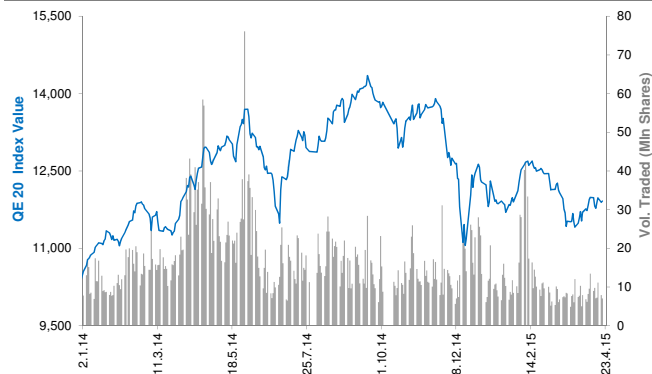
YTD-15 Most Active Stocks by Volume	Price (AED)	YTD-Val ('000 AED)	Volume ('000 Shrs)	YTD-15 Return
Eshraq Properties Co.	0.97	2,567,239	3,086,406	22.8%
AL DAR Properties Co.	2.78	3,792,996	1,490,802	4.9%
Ras Al Khaimah Properties	0.73	661,231	900,090	(1.4%)
Dana Gas	0.47	369,232	797,965	(6.0%)
Waha Capital Co.	2.67	1,223,230	419,519	(5.3%)

YTD-15 Return: Is a total return which accounts in addition to the change in price the cash & share dividends announced during the year.

Qatar Exchange Daily Report

April 21, 2015

Index Performance relative to Volume



Sectors' Return & Valuation Multiples

	Market Cap. (QAR Mn)	MTD % Chg	P/E (X)	P/B (X)	Yield (%)
Qatar Exchange	638,787	1.0%	15.0	2.0	3.6%
Banking & Finance	255,539	(0.3%)	13.1	2.1	3.8%
Goods & Consumer Services	28,312	1.6%	15.2	2.2	2.9%
Industrial	185,886	0.9%	18.1	3.2	4.5%
Insurance	21,907	(1.5%)	10.2	1.6	2.0%
Real Estate	72,585	6.4%	14.7	1.3	1.6%
Telecom	47,322	0.7%	23.8	1.6	2.7%
Transport	27,236	1.9%	13.1	1.5	3.9%

Sectors' MTD Return is based on the Change in market cap. and it might not conform with the benchmark return for each sector

Market Breadth



19



18

=

6

Top 10 Stocks by Market Capitalization

	Market Cap. (QAR Mn)	P/E (X)	ROE* (%)
1- Qatar National Bank	131,759	12.6	18.3%
2- Industries Qatar	85,850	13.5	18.9%
3- Ezdan Holding Group Co.	44,376	32.6	4.5%
4- Masraf Al Rayan	36,188	18.1	17.6%
5- Mesaieed Petrochemical Holding Co.	33,041	18.4	12.4%
6- Ooredoo (formerly Q-Tel)	32,545	15.2	9.1%
7- Qatar Islamic Bank	24,102	15.1	12.8%
8- Qatar Electricity & Water Co.	21,186	13.8	22.6%
9- Commercial Bank of Qatar	18,912	10.1	12.5%
10- Barwa Real Estate Co.	18,678	6.7	17.6%

Subtotal	446,636	12.62	16.8%
-----------------	----------------	--------------	--------------

* ROE is based on FY2014 Net Profit & Shareholders' Equity as of 31-December-14

Today's Top Movers and Most Active Stocks

Best Return Performers	Price (QAR)	Daily Return	Value (QAR)
Widam(Qatar Meat & Livestock Co.)	59.90	3.1%	12,714,492
Qatari Investors Group	45.70	2.8%	1,278,392
Gulf International Services	88.00	2.4%	76,420,901
Mannai Corporation	108.90	2.3%	3,505,396
Qatar Oman Investment Co.	14.76	1.9%	2,899,772

Worst Return Performers	Price (QAR)	Daily Return	Value (QAR)
Qatar Cinema & Film Distribution	42.20	(7.9%)	20,280
Qatari German Co. for Medical Devices	13.05	(4.7%)	8,822,043
Qatar General Insurance & Reins. Co.	55.40	(1.9%)	1,657,082
Doha Insurance Co.	25.45	(1.2%)	264,621
Industries Qatar	141.90	(1.1%)	37,767,355

Most Active Stocks by Volume	Price (QAR)	Daily Return	Volume (Shares)
Vodafone Qatar	17.48	0.0%	1,171,499
Ezdan Holding Group Co.	16.73	0.2%	950,274
Gulf International Services	88.00	2.4%	874,529
Qatari German Co. for Medical Devices	13.05	(4.7%)	665,410
Barwa Real Estate Co.	48.00	0.4%	549,886

Source: KAMCO Research

Market Return, Volatility & Trading Indicators

Market Return	Closing Value	DTD Chg	DTD % Chg	MTD % Chg	YTD-15 % Chg
QE 20 Index	11,915.76	22.81	0.2%	1.7%	(3.0%)
Market Cap (QAR Mn)	638,787	337	0.1%	1.0%	(5.6%)

Benchmark Volatility**	QE 20 Volatility Since:				
	Jan-2014	Jan-2013	Jan-2012	Jan-2011	Jan-2010
QE 20 Index	17.2%	16.6%	14.3%	14.3%	14.4%

** Annualized Standard Deviation of Daily Returns

Trading Indicators	Today's Value	DTD Chg	DTD % Chg	Average Daily YTD-15	YTD-14
--------------------	------------------	------------	--------------	-------------------------	--------

Volume ('000 Shares)	7,047	(871)	(11.0%)	11,252	18,211
Value Traded (QAR Mn)	324	50	18.5%	481	755
No. of Trades	4,662	640	15.9%	5,880	8,471

YTD-2015 Top Movers and Most Active Stocks

YTD-15 Best Return Performers	Price (QAR)	YTD Value (QAR 000's)	YTD Volume (Shares 000's)	YTD-15 Return
Medicare Group	160.00	444,103	3,163	36.8%
Qatari German Co. for Medical Devices	13.05	161,468	13,677	28.6%
Qatar Industrial Manufacturing Co.	46.00	95,623	1,969	23.8%
Gulf Warehousing Co.	67.90	204,784	3,524	20.4%
Barwa Real Estate Co.	48.00	4,427,946	96,961	14.6%

YTD-15 Worst Return Performers	Price (QAR)	YTD Value (QAR 000's)	YTD Volume (Shares 000's)	YTD-15 Return
Ooredoo	101.60	702,029	6,357	(18.0%)
Salam International Investment	13.37	309,203	20,836	(15.6%)
Industries Qatar	141.90	3,007,675	20,279	(15.5%)
Doha Insurance Co.	25.45	34,301	1,263	(12.2%)
Qatar National Bank	188.30	2,526,175.4	12,721.85	(11.6%)

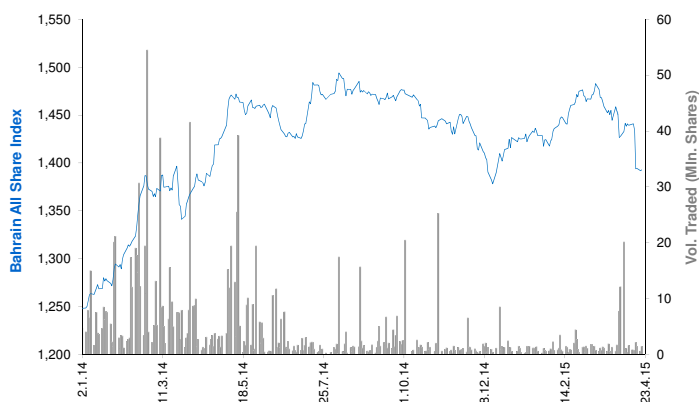
YTD-15 Most Active Stocks by Vol.	Price (QAR)	YTD Value (QAR 000's)	YTD Volume (Shares 000's)	YTD-15 Return
Vodafone Qatar	17.48	2,495,610	142,724	6.3%
Ezdan Holding Group Co.	16.73	1,725,836	105,852	12.1%
Barwa Real Estate Co.	48.00	4,427,946	96,961	14.6%
Mazaya Qatar R.E Development Co.	19.00	1,095,732	55,509	(0.8%)
Masraf Al Rayan	48.25	1,756,680	37,799	9.2%

YTD-15 Return: Is a total return which accounts in addition to the change in price the cash & share dividends announced during the year.

Bahrain Bourse Daily Report

April 21, 2015

Index Performance relative to Volume



Sectors' Return & Valuation Multiples

	Market Cap. (BHD Mn)	MTD % Chg	P/E (X)	P/B (X)	Yield (%)
Bahrain Bourse	7,928	(2.6%)	10.0	1.0	3.6%
Commercial Banks	3,459	(1.4%)	11.0	1.4	4.1%
Investment	2,277	(7.6%)	9.2	0.7	0.9%
Insurance	172	(5.6%)	12.5	0.9	2.4%
Service	1,085	2.6%	10.9	1.1	5.3%
Hotel & Tourism	213	0.6%	12.0	0.9	4.0%
Industrial	722	0.8%	7.4	0.8	7.2%

Sectors' MTD Return is based on the Change in market cap. and it might not conform with the benchmark return for each sector

Market Breadth

▲ 4 ▼ 2 = 34

Top 10 Stocks by Market Capitalization

	Market Cap. (BHD Mn)	P/E (X)	ROE* (%)
1- Ahli United Bank (Price in USD)	1,652	9.08	14.2%
2- Arab Banking Corp. (Price in USD)	891	7.43	7.9%
3- National Bank of Bahrain	838	15.69	14.1%
4- Aluminum Bahrain	701	7.27	10.5%
5- Bahrain Telecommunications Co.	562	11.39	9.3%
6- Bank of Bahrain and Kuwait	476	9.50	14.0%
7- United Gulf Bank	325	45.83	4.1%
8- Al Salam Bank	300	19.28	4.9%
9- Al Baraka Banking (Price in USD)	294	5.15	11.3%
10- Investcorp Bank (Price in USD)	181	3.67	13.2%

Subtotal 6,222 9.14 10.7%

* ROE is based on FY2014 Net Profit & Shareholders' Equity as of 31-December-14

Today's Top Movers and Most Active Stocks

Best Return Performers	Price (BHD)	Daily Return	Value (BHD)
Nass Corporation	0.184	5.7%	5,052
Bahrain Telecommunications Co.	0.338	0.6%	54,207
Bank of Bahrain and Kuwait	0.440	0.5%	10,629
Aluminum Bahrain	0.494	0.4%	4,716

Worst Return Performers	Price (BHD)	Daily Return	Value (BHD)
Bahrain Islamic Bank	0.140	(3.4%)	14,000
AlKhaleeji Commercial Bank	0.053	(1.9%)	19,080

Most Active Stocks by Volume	Price (BHD)	Daily Return	Volume (Shares)
Ahli United Bank (USD)	0.730	0.0%	375,957
AlKhaleeji Commercial Bank	0.053	(1.9%)	360,000
ITHMAR Bank (USD)	0.150	0.0%	200,000
Bahrain Telecommunications Co.	0.338	0.6%	161,099
Bahrain Islamic Bank	0.140	(3.4%)	100,000

Source: KAMCO Research

Market Return, Volatility & Trading Indicators

Market Return	Closing Value	DTD Chg	DTD % Chg	MTD % Chg	YTD-15 % Chg
Bahrain All Share Index	1,392.71	0.82	0.1%	(3.9%)	(2.4%)
Market Cap (BHD Mln)	7,928.49	10.50	0.1%	(2.6%)	(2.0%)

Benchmark Volatility**	Volatility Since:				
	Jan-2014	Jan-2013	Jan-2012	Jan-2011	Jan-2010
Bahrain All Share Index	7.62%	7.2%	6.8%	7.3%	7.8%

** Annualized Standard Deviation of Daily Returns

Trading Indicators	Today's Value	DTD Chg	DTD % Chg	Average Daily YTD-15	YTD-14
Volume ('000 Shares)	1,403	825	142.5%	1,558	7,615
Value Traded (BHD '000)	303	247	434.2%	392	1,714
No. of Trades	89	58.0	187.1%	44	102

YTD-2015 Top Movers and Most Active Stocks

YTD-15 Best Return Performers	Price (BHD)	YTD-Val (BHD '000)	YTD Vol (Shares)	YTD-15 Return
Al Salam Bank	0.140	1,816	14,339,266	39.0%
Al-Ahli Insurance Co.	0.334	41	130,367	23.7%
AlKhaleeji Commercial Bank	0.053	537	11,059,995	23.3%
Bahrain Cinema Co.	1.620	4,277	2,646,650	21.9%
Investcorp Bank (USD)	601.000	485	2,705	19.8%

YTD-15 Worst Return Performers	Price (BHD)	YTD-Val (BHD '000)	YTD Vol (Shares)	YTD-15 Return
Gulf Finance House (USD)	0.070	8	283,267	(61.4%)
Takaful International Co.	0.091	2,480.6	25,842,075	(37.2%)
Bank of Bahrain and Kuwait	0.440	3,321	7,283,867	(14.9%)
Al Baraka Banking Group (USD)	0.700	129	463,381	(11.3%)
Zain Bahrain B.S.C	0.182	116	604,261	(9.0%)

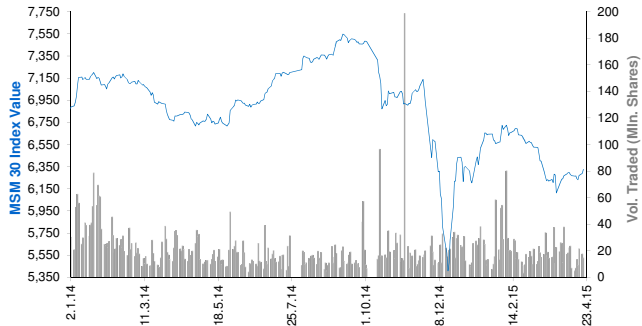
YTD-15 Most Active Stocks by Volume	Price (BHD)	YTD-Val (BHD '000)	YTD Vol (Shares)	YTD-15 Return
Ahli United Bank (USD)	0.730	9,300	30,571,382	(1.6%)
Takaful International Co.	0.091	2,481	25,842,075	(37.2%)
Al Salam Bank	0.140	1,816	14,339,266	39.0%
AlKhaleeji Commercial Bank	0.053	537	11,059,995	23.3%
Bank of Bahrain and Kuwait	0.440	3,321	7,283,867	(14.9%)

YTD-15 Return: Is a total return which accounts in addition to the change in price the cash & share dividends announced during the year.

Muscat Securities Market Daily Report

April 21, 2015

Index Performance relative to Volume



Sectors' Return & Valuation Multiples

	Market Cap. (OMR Mn)	MTD % Chg	P/E (X)	P/B (X)	Yield (%)
Muscat Securities Mkt	7,642	1.0%	10.13	1.42	3.9%
Financial	3,608	1.9%	9.09	1.08	3.9%
Industrial	1,219	(0.2%)	12.73	1.56	3.8%
Services	2,815	0.3%	10.75	2.24	4.0%

Sectors' MTD Return is based on the Change in market cap. and it might not conform with the benchmark return for each sector

Market Breadth	▲	16	▼	8	=	29
----------------	---	----	---	---	---	----

Top 10 Stocks by Market Capitalization

	Market Cap. (OMR Mn)	P/E (X)	ROE* (%)
1- Oman Telecom Co.	1,245	10.17	21.5%
2- Bank Muscat	1,219	7.47	12.4%
3- Ooredoo	474	12.50	19.7%
4- Bank Dhofar	433	10.69	12.4%
5- National Bank of Oman	424	8.42	13.9%
6- Raysut Cement	321	11.70	19.3%
7- Ahli Bank	308	12.26	14.9%
8- HSBC Bank Oman	270	22.13	3.9%
9- Bank Sohar	224	7.51	15.6%
10- Shell Oman Marketing	200	16.22	36.3%

Subtotal 5,289 9.81 14.6%

* ROE is based on FY2014 Net Profit & Shareholders' Equity as of 31-December-14

Today's Top Movers and Most Active Stocks

Best Return Performers	Price (OMR)	Daily Return	Value (OMR)
ONIC. Holding	0.462	5.0%	652,830
OMINVEST	0.456	3.6%	565,700
Galfar Engineering	0.135	3.1%	1,420
Ahli Bank	0.216	2.4%	154,670
National Bank of Oman	0.316	1.9%	280,390

Worst Return Performers	Price (OMR)	Daily Return	Value (OMR)
Sohar Power	0.372	(1.6%)	46,450
Oman Flour Mills	0.502	(1.6%)	3,570
Al Sharqia Inv. Holding	0.155	(1.3%)	18,340
Bank Muscat	0.532	(1.1%)	808,650
United Finance	0.121	(0.8%)	5,970

Most Active Stocks by Volume	Price (OMR)	Daily Return	Volume (Shares)
Oman & Emirates Investment	0.123	0.0%	2,399,160
Bank Muscat	0.532	(1.1%)	1,521,188
Gulf Investment Services	0.148	1.4%	1,460,718
ONIC. Holding	0.462	5.0%	1,411,061
Oman Investment & Finance Co.	0.228	0.9%	1,333,197

Source: KAMCO Research

Market Return, Volatility & Trading Indicators

Market Return	Closing Value	DTD Chg	DTD % Chg	MTD % Chg	YTD-15 % Chg
MSM 30 Index	6,325.25	35.03	0.6%	1.4%	(0.3%)
Market Cap (OMR Mn)	7,642.38	15.77	0.2%	1.0%	(1.2%)

Benchmark Volatility**	Volatility Since:				
	Jan-2014	Jan-2013	Jan-2012	Jan-2011	Jan-2010
MSM 30 Index	15.0%	12.6%	11.3%	11.5%	11.1%

** Annualized Standard Deviation of Daily Returns

Trading Indicators	Today's Value	DTD Chg	DTD % Chg	Average Daily YTD-15	YTD-14
--------------------	------------------	------------	--------------	-------------------------	--------

Volume ('000 Shares)	14,692	(1,530)	(9.4%)	19,667	28,121
Value Traded (OMR '000)	5,048	186	4.0%	5,836	9,543
No. of Trades	781	(29)	(3.6%)	1,153	1,473

YTD-2015 Top Movers and Most Active Stocks

YTD-15 Best Return Performers	Price (OMR)	YTD-Value (OMR 000's)	YTD Vol. (Shares 000's)	YTD-15 Return
Gulf International Chemicals	0.233	8,794	37,654	53.3%
ONIC. Holding	0.462	5,982	15,041	46.2%
Al Anwar Holding	0.267	100,733	390,665	39.8%
United Power	1.760	107	55	32.8%
Al Sharqia Inv. Holding	0.155	5,783	33,774	24.0%

YTD-15 Worst Return Performers	Price (OMR)	YTD-Value (OMR 000's)	YTD Volume (Shares 000's)	YTD-15 Return
Port Services Corporation	0.228	370	1,221	(35.6%)
Renaissance Services	0.376	9,106	20,438	(20.7%)
National Gas Co.	0.406	1,897	3,842	(19.0%)
Galfar Engineering	0.135	10,069	61,958	(16.1%)
Al Jazeera Steel Products Co.	0.284	1,841	5,427	(15.5%)

YTD-15 Most Active Stocks by Volume	Price (OMR)	YTD-Value (OMR 000's)	YTD Volume (Shares 000's)	YTD-15 Return
Al Anwar Holding	0.267	100,733	390,665	39.8%
Gulf Investment Services	0.148	28,168	170,903	4.2%
Oman & Emirates Investment	0.123	15,023	112,320	0.0%
Bank Muscat	0.532	62,668	110,355	(4.0%)
Global Financial Investment Co.	0.119	10,867	95,251	(2.5%)

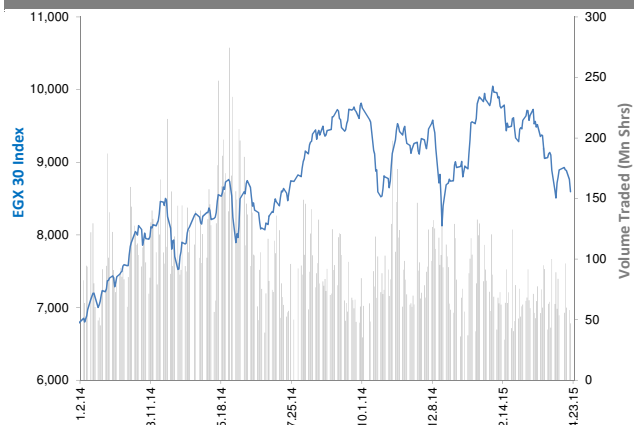
YTD-15 Return: Is a total return which accounts in addition to the change in price the cash & share dividends announced during the year.

The Egyptian Exchange Daily Report

(The bulletin covers the top 60 companies by Mkt. Cap out of 336 listed companies)

April 21, 2015

Index Performance relative to Volume



Sectors' Return & Valuation Multiples

	Market Cap. (EGP Mn)	MTD % Chg	P/E (X)	P/BV (X)	Yield (%)
The Egyptian Exchange	357,886	(5.0%)	21.5	1.6	3.9%
Banking & Finance	74,766	(4.1%)	11.5	2.5	2.4%
Basic Resources	17,814	(6.4%)	NM	1.5	4.5%
Chemical	21,911	(0.2%)	7.8	3.1	8.7%
Construction & Material	79,564	(6.0%)	11.5	0.8	5.7%
Financial Services	21,888	(9.8%)	NM	1.0	0.9%
Food & Beverage	8,228	(4.9%)	15.8	2.3	3.4%
Healthcare & Pharma.	6,428	(1.2%)	20.6	3.4	3.7%
Ind. Goods, Services, Auto.	12,485	(5.7%)	46.4	1.7	2.4%
Media	573	(7.6%)	18.2	0.3	0.0%
Oil & Gas	4,176	(3.6%)	5.1	1.5	18.6%
Personal & Household	16,513	(2.6%)	16.0	1.5	3.2%
Real Estate	40,584	(9.1%)	47.0	1.2	0.3%
Telecommunication	48,564	(2.7%)	NM	1.7	7.3%
Travel & Leisure	4,393	(8.7%)	NM	1.3	0.0%

Sectors' MTD Return is based on the Change in market cap. and it might not conform with the benchmark return for each sector

Top 10 Stocks by Market Capitalization

	Market Cap. (EGP Mn)	P/E (X)	ROE* (%)
1-Orascom Construction Industries (OCI)	59,382	NM	NM
2-Commercial Int'l Bank (Egypt)	47,697	15.9	25.1%
3-T M G Holding	20,120	34.4	2.3%
4-Telecom Egypt	17,856	6.0	10.5%
5-Global Telecom Hldg.	17,573	NM	NM
6-ABU Qir Fertilizers & Chemical ind. Co.	13,460	9.6	43.3%
7-MobiNil	13,135	NM	NM
8-EASTERN CO	10,400	13.8	16.9%
9-Elswedey Cables	10,277	NM	2.0%
10-Egyptian Financial Group-Hermes Co.	8,161	NM	NM
Subtotal	158,679	32.17	5.0%

*: ROE is based on Net Profit for the Period FY-13 & Shareholders' Equity as of 31-December-13

Today's Top Movers and Most Active Stocks

Best Return Performers	Last Price (EGP)	Daily Return
National CementCo. - Egypt	10.66	6.4%
EASTERN CO	208.00	3.5%
GB AUTO S.A.E	4.57	2.7%
Egyptian Co. for Mobile Services (MobiNil)	131.35	2.6%
El Ezz Steel Rebars	12.36	0.9%

Worst Return Performers	Last Price (EGP)	Daily Return
Palm Hills Developments	2.90	(16.4%)
El Ahli Investment and Development	7.69	(4.4%)
Asec Company for Mining - Ascom	7.33	(3.8%)
Egyptians Housing Dev. & Reconstruction	5.59	(3.6%)
Elswedey Cables	46.00	(3.2%)

Most Active Stocks By Volume	Last Price (EGP)	Volume ('000 Shrs)
Amer Group Holding	1.01	12,085
Citadel Capital	2.25	4,629
Palm Hills Developments	2.90	3,998
Global Telecom Hldg. (Orascom Telecom)	3.35	3,977
Egyptian Resorts Co.	0.99	3,843

Source: KAMCO Research

Market Return, Volatility & Trading Indicators

Market Return	Closing Value	DTD Chg	DTD % Chg	MTD % Chg	YTD-15 % Chg
EGX 30 Index	8,595.78	(169.56)	(1.9%)	(5.9%)	(3.7%)
Market Cap (EGP Mn)	357,886	(3,123)	(1.0%)	(5.0%)	(7.4%)

Benchmark Volatility**	Since Jan-14	Since Jan-13	Since Jan-12	Since Jan-11	Since Jan-10
EGX 30 Index	21%	21%	24%	25%	26%

**: Annualized Standard Deviation of Daily Returns

Trading Indicators	Today's Value	DTD Chg	DTD % Chg	Average Daily YTD-15	YTD-14
Volume (Mn Shares)	47	(10.98)	(18.9%)	72	141
Value Traded (EGP Mn)	247	(7.7)	(3.0%)	407	575
No. of Trades	9,634	436	4.7%	12,482	17,695

Market Breadth	▲	8	▼	41	=	11
----------------	---	---	---	----	---	----

YTD-2015 Top Movers and Most Active Stocks

YTD-15 Best Return Performers	Last Price (EGP)	Volume ('000 Shrs)	YTD-15 Return
Qatar National Bank AIAhli	35.00	1,085	12.9%
Misr Cement Co.	80.50	195	12.7%
Elswedey Cables	46.00	12,640	10.8%
Suez Cement Co.	39.00	2,130	9.1%
Credit Agricole Egypt	21.35	16,573	7.9%

YTD-15 Worst Return Performers	Last Price (EGP)	Volume ('000 Shrs)	YTD-15 Return
GB AUTO S.A.E	4.57	13,605	(85.3%)
Orascom Hotels & Development	11.32	11,485	(41.7%)
Asec Company for Mining - Ascom	7.33	2,842	(37.9%)
Palm Hills Developments	2.90	413,767	(29.4%)
El Ahli Investment and Development	7.69	3,452	(28.9%)

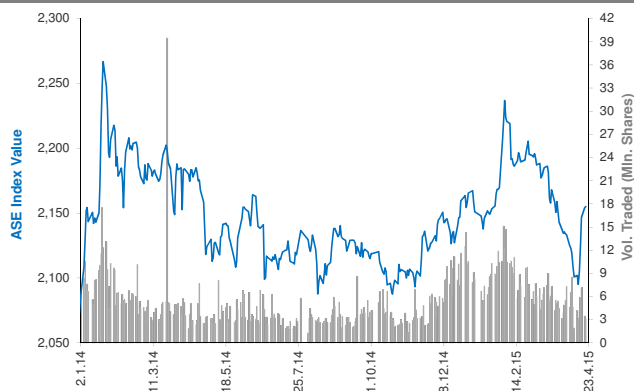
YTD-15 Most Active Stocks by Volume	Last Price (EGP)	Volume ('000 Shrs)	YTD-15 Return
Amer Group Holding	1.01	1,455,405	(21.09%)
Citadel Capital	2.25	681,305	(21.60%)
Global Telecom Hldg. (Orascom Telecom)	3.35	542,086	(15.62%)
Egyptian Resorts Co.	0.99	504,427	(18.85%)
Palm Hills Developments	2.90	413,767	(29.44%)

YTD-15 Return: Is a total return which accounts in addition to the change in price the cash & share dividends announced during the year.

Amman Stock Exchange Daily Report (1st Market)

April 21, 2015

Index Performance relative to Volume



Sectors' Return & Valuation Multiples

	Market Cap. (JD Mn)	MTD % Chg	P/E (X)	P/BV (X)	Yield (%)
Amman Stock Exchange	13,830	3.5%	14.8	0.9	3.8%
Banks	9,628	0.0%	10.7	0.8	3.5%
Insurance	94	(1.5%)	NM	0.9	3.3%
Diversified Financial Services	190	(1.4%)	NM	0.5	0.9%
Real Estate	291	(2.6%)	76.3	0.7	0.5%
Educational Services	330	(0.2%)	12.4	2.2	4.1%
Transportation	140	(4.4%)	24.0	0.7	4.0%
Technology & Commun.	106	4.5%	33.0	0.9	2.4%
Media	814	1.6%	16.3	2.2	10.1%
Utilities & Energy	15	5.4%	NM	0.3	0.0%
Pharmaceutical & Medical Ind.	697	2.9%	33.1	3.0	2.6%
Tobacco & Cigarettes	108	12.6%	59.2	1.1	0.0%
Mining & Extraction Industries	368	14.4%	11.7	3.3	6.3%
Engineering & Construction	642	3.3%	NM	0.7	3.3%
Textiles , Leather & Cloth.	102	(4.4%)	35.8	1.5	1.3%
	78	(4.1%)	16.3	0.9	5.2%

Sectors' MTD Return is based on the Change in market cap. and it might not conform with the benchmark return for each sector

Top 10 Stocks by Market Capitalization

	Market Cap. (JD Mn)	P/E (X)	ROE* (%)
1-ARAB BANK	4,011	8.1	6.5%
2-HOUSING BK TRD FIN	2,326	23.3	10.3%
3-JORDAN TELECOM	800	15.5	14.1%
4-JOR ISLAMIC BANK	537	11.9	17.7%
5-JOR PHOSPHATE MN	495	NM	0.2%
6-BANK OF JORDAN	417	10.2	12.9%
7-CAIRO AMMAN BANK	415	10.2	15.4%
8-JOR PETROLM REF	411	14.6	22.6%
9-JOR KUWAIT BANK	400	8.4	11.7%
10-EQBAL INV.CO	297	10.6	42.4%

Subtotal	10,110	11.49	7.9%
----------	--------	-------	------

* ROE is based on FY-2013 Net Profit & Shareholders' Equity as of 31-December-13

Today's Top Movers and Most Active Stocks

Best Return Performers	Price (JD)	Daily Return
READY MIX CONCRETE & CONSTRUCTION SUPPLIES	2.70	5.9%
MIDDLE EAST SPECIALIZED CABLES CO.	0.21	5.0%
JORDAN DAIRY	5.63	4.8%
JORDAN PRESS FOUNDATION/AL-RA'I	1.32	4.8%
JORDANIAN PHARMACEUTICAL MANUFACTURING	0.82	3.8%

Worst Return Performers	Price (JD)	Daily Return
JORDAN AHLI BANK	1.25	(7.4%)
UNIVERSAL CHEMICAL INDUSTRIES	1.02	(4.7%)
THE JORDAN PIPES MANUFACTURING	1.23	(4.7%)
SPECIALIZED INVESTMENT COMPOUNDS	0.64	(4.5%)
ARAB EAST FOR REAL ESTATE INVESTMENTS CO.	1.52	(4.4%)

Most Active Stocks By Volume	Price (JD)	Volume ('000 Shrs)
AD-DULAYL INDUSTRIAL PARK & REAL ESTATE CO.	1.16	988
AL-TAJAMOUAT FOR CATERING AND HOUSING CO.	1.13	325
JORDAN COMMERCIAL BANK	1.10	146
NATIONAL ALUMINIUM INDUSTRIAL	0.60	133
JORDAN PETROLEUM REFINERY	5.48	114

Source: KAMCO Research

Market Return, Volatility & Trading Indicators

Market Return	Closing Value	DTD Chg	DTD % Chg	MTD % Chg	YTD-15 % Chg
ASE Index	2,155.09	0.98	0.0%	0.9%	(0.5%)
Market Cap (JD Mn)	13,830.10	(29.12)	(0.2%)	3.5%	(0.5%)

Benchmark Volatility**	Since Jan-2014	Since Jan-2013	Since Jan-2012
ASE Index	7.5%	8.0%	7.6%

** Annualized Standard Deviation of Daily Returns

Trading Indicators	Today's Value	DTD Chg	DTD % Chg	Average Daily YTD-15	YTD-14
Volume ('000 Shares)	3,096	(384)	(11.0%)	7,282	6,327
Value Traded (JD '000)	4,912	298	6.5%	7,384	7,815
No. of Trades	2,291	242	11.8%	2,608	2,755

Market Breadth	▲ 25	▼ 26	= 68
----------------	------	------	------

YTD-2015 Top Movers and Most Active Stocks

YTD-15 Best Return Performers	Price (JD)	Volume ('000 Shrs)	YTD-15 Return
JORDAN DAIRY	5.63	42.8	178.7%
UNIVERSAL CHEMICAL INDUSTRIES	1.02	16.0	88.9%
JORDAN PETROLEUM REFINERY	5.48	5,338.7	53.9%
AD-DULAYL INDUSTRIAL PARK & REAL ESTATE CO.	1.16	126,001.5	41.5%
CENTURY INVESTMENT GROUP	2.14	16,203.1	35.4%

YTD-15 Worst Return Performers	Price (JD)	Volume ('000 Shrs)	YTD-15 Return
M. E PHARMA. & CHMICAL IND. & MEDICAL APPLIANCE	0.65	7.0	(67.2%)
COMPREHENSIVE MULTIPLE PROJECT CO.	0.76	4.7	(38.7%)
JORDAN PRESS FOUNDATION/AL-RA'I	1.32	137.8	(34.7%)
NUTRIDAR	0.48	5.1	(31.4%)
TRANSPORT& INVESTMENT BARTER CO.	0.53	71,913.3	(27.4%)

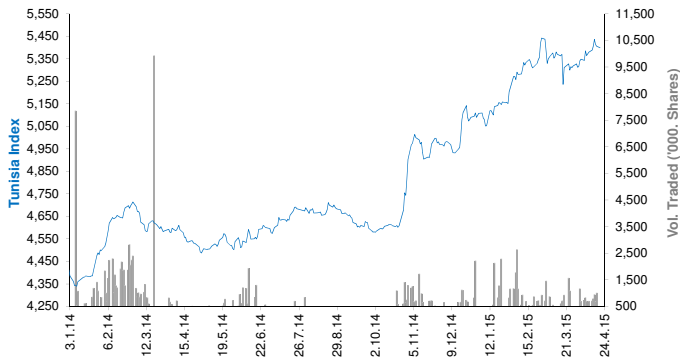
YTD-15 Most Active Stocks by Volume	Price (JD)	Volume ('000 Shrs)	YTD-15 Return
AD-DULAYL INDUSTRIAL PARK & REAL ESTATE CO.	1.16	126,001	41.5%
TRANSPORT& INVESTMENT BARTER CO.	0.53	71,913	(27.4%)
JORDAN INDUSTRIAL RESOURCES	0.42	59,253	(14.3%)
SPECIALIZED INVESTMENT COMPOUNDS	0.64	36,854	10.3%
REAL ESTATE DEVELOPMENT	0.22	34,585	22.2%

YTD-15 Return: Is a total return which accounts in addition to the change in price the cash & share dividends announced during the year.

Tunisia Stock Exchange Daily Report

April 21, 2015

Index Performance relative to Volume



Sectors' Return & Valuation Multiples

	Market Cap. (DT Mn)	MTD % Chg	P/E (X)	P/B (X)	Yield (%)
Tunis Stock Exchange	17,180	1.4%	20.94	1.96	2.2%
Banking	6,585	(0.2%)	14.43	1.44	2.3%
Insurance	806	7.0%	19.70	1.60	0.8%
Leasing	514	1.5%	11.97	1.20	3.6%
Financial Services	1,370	(0.7%)	16.64	2.17	2.5%
Industrial	1,292	4.0%	14.75	2.65	2.5%
Chemical Industry	701	(2.7%)	42.65	2.12	4.3%
Food & Beverage	3,624	5.2%	26.46	5.53	1.4%
Retailing	1,423	0.1%	NM	4.10	3.1%
Others	866	(0.3%)	NM	1.07	1.2%

Sectors' MTD Return is based on the Change in market cap. and it might not conform with the benchmark return for each sector

Top 10 Stocks by Market Capitalization

	Market Cap. (DT Mn)	P/E (X)	ROE* (%)
1-Société Frigorifique et Brasserie de Tunis	2,645	23.58	22.0%
2-Banque de Tunisie	1,617	21.59	12.3%
3-Banque Internationale Arabe de Tunisie	1,394	17.47	13.1%
4-Banque Attijari De Tunisie	1,095	13.25	21.3%
5-Poulina Group Holding	954	14.19	12.1%
6-Delice Holding	900	36.02	24.5%
7-Amen Bank	586	5.52	17.3%
8-Union Bancaire pour le Commerce et	506	61.92	3.1%
9-Société d'Articles Hygiéniques	453	31.67	13.4%
10-Arab Tunisian Bank	427	8.90	9.8%
Subtotal	10,578	17.10	14.6%

*: ROE is based on Net Profit for the Period FY-13 & Shareholders' Equity as of 31-December-13

Today's Top Movers and Most Active Stocks

Best Return Performers	Price (DT)	Daily Return
Société Générale Industrielle de Filtration	3.23	3.2%
Ciments De Bizerte	5.70	1.8%
Société Nouvelle Maison de la Ville de Tunis	18.70	1.7%
Compagnie Internationale de Leasing	14.20	1.5%
Société d'Articles Hygiéniques	13.00	1.5%

Worst Return Performers	Price (DT)	Daily Return
Electrostar	5.52	(4.5%)
Société Tunisienne d'Equiptement	4.97	(4.4%)
Société Tunis. d'Entreprises de Télécom.	2.45	(2.8%)
Société Magasin Général	27.00	(1.7%)
Delice Holding	16.40	(1.7%)

Most Active Stocks By Volume	Price (DT)	Volume (Shares)
Société Moderne de Céramique	3.02	72,484
Delice Holding	16.40	28,787
Tunisie Profilés Aluminium	4.35	17,785
Electrostar	5.52	16,863
Société Tunisienne des Marchés de Gros	1.85	14,200

Source: KAMCO Research

Market Return, Volatility & Trading Indicators

Market Return	Closing Value	DTD Chg	DTD % Chg	MTD % Chg	YTD-15 % Chg
Tunisia Index	5,399.32	(6.17)	(0.1%)	1.6%	6.1%
Market Cap (DT Mln)	17,180	(34.01)	(0.2%)	1.4%	6.1%

Benchmark Volatility	Since Jan-14	Since Jan-13	Since Jan-12
Tunisia Index	7.0%	7.1%	7.0%

Trading Indicators	Today's Value	DTD Chg	DTD % Chg	Average Daily YTD-15	YTD-14
Volume ('000 Shares)	300	(705.8)	(70.2%)	717	1,170
Value Traded ('000 DT)	2,525	(9,516)	(79.0%)	6,671	7,170
No. of Trades	1,042	(612)	(37.0%)	1,544	2,045

Market Breadth	▲ 19	▼ 16	= 29
----------------	------	------	------

YTD-2015 Top Movers and Most Active Stocks

YTD-15 Best Return Performers	Price (DT)	Volume ('000 Shrs)	YTD-15 Return
Société de Placement et de Dévelop. Ind. et Touristique	12.70	158.6	38.2%
Société Frigorifique et Brasserie de Tunis	29.39	5,740.2	32.2%
Banque de l'Habitat	13.20	1,836.4	28.5%
Banque Nationale Agricole	9.55	898.4	25.7%
Société d'Articles Hygiéniques	13.00	4,255.0	22.3%

YTD-15 Worst Return Performers	Price (DT)	Volume ('000 Shrs)	YTD-15 Return
Société Tunisienne d'Equiptement	4.97	0.079	(45.3%)
Société Tunis. d'Entreprises de Télécom.	2.45	332.6	(27.0%)
Société Tunisienne de Réassurance	7.84	844.7	(21.2%)
Société Essoukna	5.08	125.8	(19.4%)
Société des Industries Pharm. de Tunisie	7.08	9.1	(17.7%)

YTD-15 Most Active Stocks by Volume	Price (DT)	Volume ('000 Shrs)	YTD-15 Return
Société Moderne de Céramique	3.02	10,817.3	20.3%
Société Frigorifique et Brasserie de Tunis	29.39	5,740.2	32.2%
Société d'Articles Hygiéniques	13.00	4,255.0	22.3%
TUNISAIR	0.93	2,310.9	(16.8%)
Delice Holding	16.40	2,273.7	0.1

YTD-15 Return: Is a total return which accounts in addition to the change in price the cash & share dividends announced during the year.

Beirut Stock Exchange Daily Report

April 21, 2015

Index Performance relative to Volume



Sectors' Return & Valuation Multiples

	Market Cap. (USD Mn)	MTD % Chg	P/E (X)	P/B (X)	Yield (%)
Beirut Stock Exchange	11,656	(2.4%)	8.73	0.99	3.9%
Banking	9,467	(3.1%)	8.35	0.98	4.6%
Industrial	348	7.5%	13.80	1.51	4.6%
Trading	35	0.0%	11.56	0.69	8.5%
Real Estate & Construction	1,825	(0.3%)	9.99	0.98	0.0%

Sectors' MTD Return is based on the Change in market cap. and it might not conform with the benchmark return for each sector

Market Breadth

▲	2	▼	2	=	26
---	---	---	---	---	----

Top 10 Stocks by Market Capitalization

	Market Cap. (USD Mn)	P/E (X)	ROE* (%)
1- Bank Audi	2,498	10.84	11.3%
2- BLOM Bank	2,064	8.70	15.0%
3- Solidere A	1,106	6.05	9.8%
4- Byblos Bank	984	6.61	9.3%
5- Bank Audi GDR	767	-	-
6- BLOM Bank GDR	743	-	-
7- Solidere B	719	3.93	9.8%
8- Holcim Liban	317	14.54	10.2%
9- Bank Of Beirut	310	5.16	11.0%
10- Byblos Bank Preferred 2009	205	-	-

*: ROE is based on Net Profit for the period ended December-13 and Shareholders' equity as of 31-December-13

Market Return, Volatility & Trading Indicators

Market Return	Closing Value	DTD Chg	DTD % Chg	MTD % Chg	YTD-15 % Chg
KAMCO BeirutSE TRW Index	1,136.70	(4.14)	(0.4%)	(2.4%)	4.0%
Market Cap (USD Mn)	11,655.535	(42.50)	(0.4%)	(2.4%)	3.9%

Benchmark Volatility	Since Jan-14	Since Jan-13	Since Jan-12
KAMCO BeirutSE TRW Index	8.0%	7.5%	7.2%

Trading Indicators	Today's Value	DTD Chg	DTD % Chg	Average Daily YTD-15	YTD-14
Volume ('000s shares)	42.65	(94)	(68.8%)	507	662
Value Traded ('000s USD)	862.20	(441)	(33.9%)	3,645	2,878

Today's Top Movers and Most Active Stocks

Best Return Performers	Price (USD)	Daily Return
Solidere A	11.06	0.4%
Byblos Bank Preferred 2009	102.60	0.2%

Worst Return Performers	Price (USD)	Daily Return
BLOM Bank	9.60	(2.0%)
Solidere B	11.06	(0.5%)

Most Active Stocks by Volume	Price (USD)	Volume (Shares)
Solidere A	11.06	28,112
BLOM Bank	9.60	4,759
Bank Audi Preferred F	100.00	4,073
Solidere B	11.06	2,552
Bank Audi	6.25	2,450

Source: KAMCO Research

YTD-2015 Top Movers and Most Active Stocks

YTD Best Return Performers	Price (USD)	YTD Volume (Shares)	YTD-15 Return
BLOM Bank	9.60	2,133,479	9.1%
Byblos Bank	1.74	3,559,443	8.8%
BEMO Bank	1.88	139,874	7.4%
Holcim Liban	16.25	9,218	6.6%
Bank Audi	6.25	19,366,513	4.2%

YTD Worst Return Performers	Price (USD)	YTD Volume (Shares)	YTD-15 Return
Solidere B	11.060	745,730	(2.5%)
Solidere A	11.060	1,360,266	(2.3%)
Bank Audi Preferred F	100.000	9,789	(2.2%)
Bank Audi Preferred G	100.000	10,750	(1.5%)

YTD Most Active Stocks by Volume	Price (USD)	YTD Volume (Shares)	YTD-15 Return
Bank Audi	6.25	19,366,513	4.2%
Bank Audi GDR	6.60	6,712,285	0.8%
Byblos Bank	1.74	3,559,443	8.8%
BLOM Bank	9.60	2,133,479	9.1%
Solidere A	11.06	1,360,266	(2.3%)

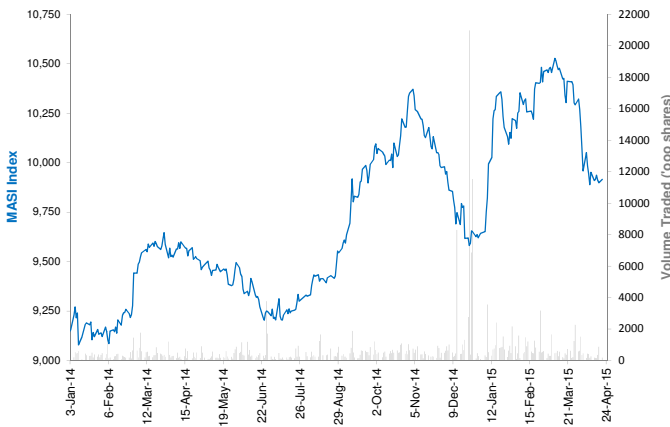
YTD-15 Return: Is a total return which accounts in addition to the change in price the cash & share dividends announced during the year.

Casablanca Stock Exchange Daily Report

(The Bulletin covers the 41 Stocks listed on the Main Market)

April 21, 2015

Index Performance relative to Volume



Market Breadth

▲ 12 ▼ 8 = 21

Top 10 Stocks by Market Capitalization

	Market Cap. (MAD Mn)	P/E (X)	ROE* (%)
1-Itissalat Al-Maghrib	110,810	20.0	36.1%
2-Attijariwafa Bank	72,448	17.5	12.5%
3-Banque Marocaine Du Commerce Exterieur	39,482	32.1	8.3%
4-Banque Centrale Populaire	38,091	20.3	6.7%
5-Ciments Du Maroc	15,591	19.3	13.1%
6-Wafa Assurances	13,930	17.9	19.9%
7-CIE Generale Immobiliere	13,346	36.4	8.2%
8-Douja Prom Addoha	9,482	5.6	15.5%
9-Holcim Maroc	9,473	25.1	11.4%
10-Credit Immobilier Et Hotelier	8,994	17.5	11.3%
Subtotal	331,645	19.15	13.9%

*: ROE is based on Net Profit for the period FY-13 and Shareholders' equity as of 31-December-13

Today's Top Movers and Most Active Stocks

Best Return Performers			Price (MAD)	Daily Return
Alliances Developpement Immobilier			133.10	10.0%
Delta Holding			28.91	5.8%
ENNAKL Automobiles			40.85	4.7%
Label Vie			1,099.00	4.6%
Lafarge Ciments			1,790.00	3.7%
Worst Return Performers			Price (MAD)	Daily Return
Marocaine de l Industrie du Raffinage			165.10	(3.4%)
Managem			915.00	(2.7%)
Med Paper			17.00	(2.3%)
Attijariwafa Bank			360.00	(1.9%)
Lesieur Cristal			105.70	(0.8%)
Most Active Stocks By Volume			Price (MAD)	Volume (Shrs)
Douja Prom Addoha			30.10	79,549
Attijariwafa Bank			360.00	37,103
Compagnie d'Assurances et de Reassurances ATLANTA			66.00	18,257
Itissalat Al-Maghrib			126.05	5,115
Banque Centrale Populaire			220.00	5,040

Source: KAMCO Research

Sectors' Return & Valuation Multiples

	Market Cap. (MAD Mn)	MTD % Chg	P/E (X)	P/B (X)	Yield (%)
Casablanca Stock Exchange	442,466	(3.8%)	18.2	2.3	3.8%
Banking	172,778	(3.4%)	19.9	1.9	2.5%
Beverages	1,772	0.0%	22.3	3.4	2.8%
Chemicals	322	(0.7%)	NM	0.7	0.0%
Construction & Bldg. Material	59,551	(4.6%)	22.3	3.5	3.6%
Distributors	8,481	(3.6%)	27.1	2.3	2.6%
Electrical & Electronic Equipment	423	(5.3%)	42.5	0.7	6.4%
Electricity	1,117	0.4%	2.8	0.2	0.0%
Food Producers & Processors	3,681	1.2%	4.9	0.7	14.5%
Holding Companies	2,533	(0.3%)	23.4	2.0	4.0%
Insurance	22,637	(1.5%)	19.9	3.2	1.9%
Investment & other Finance	3,740	(3.0%)	13.7	1.7	7.4%
Leisures & Hotel	1,734	(0.9%)	NM	1.9	0.0%
Materials, Software & Computer	733	(3.1%)	13.2	1.0	5.3%
Mining	15,007	(3.9%)	11.8	2.5	7.5%
Oil & Gas	8,750	(7.3%)	NM	1.1	0.0%
Real Estate	24,488	(1.0%)	9.3	1.2	4.7%
Telecommunications	110,810	(5.2%)	20.0	7.2	5.9%
Transport	466	(5.0%)	13.3	1.7	6.6%
Utilities	3,400	(3.4%)	11.5	2.0	5.3%
Forestry & Paper	44	(3.8%)	NM	0.7	0.0%

Sectors' MTD Return is based on the Change in market cap. and it might not conform with the benchmark return for each sector

Market Return, Volatility & Trading Indicators

Market Return	Closing Value	DTD Chg	DTD % Chg	MTD % Chg	YTD-15 % Chg
MASI Index	9,915.53	16.6	0.2%	(3.4%)	3.1%
MADEX Index	8,130.60	9.5	0.1%	(3.5%)	3.7%
Market Cap (MAD Mn)	442,466	0.9	0.2%	(3.8%)	2.5%
Benchmark Volatility**	YTD-14	Since Jan-13	Since Jan-12	Since Jan-11	Since Jan-10
MASI Index	7.7%	8.3%	8.8%	9.8%	9.9%
MADEX Index	9.8%	8.1%	8.6%	9.1%	10.2%

**: Annualized Standard Deviation of Daily Returns

Trading Indicators	Today's Value	DTD Chg	DTD % Chg	Average Daily YTD-15	YTD-14
Volume ('000 Shares)	177.49	(699.88)	(79.8%)	691	516
Value Traded (MAD Mn)	30.14	(71.76)	(70.4%)	52	70

YTD-2015 Top Movers and Most Active Stocks

YTD Best Return Performers			Price (MAD)	Volume (Shrs)	YTD-15 Return
Holcim Maroc			2,250.00	135,280	18.2%
Hightech Payment Systems SA			439.00	24,352	18.0%
TAQA MOROCCO			500.00	404,716	17.6%
Compagnie de Transport au Maroc			380.00	18,935	16.9%
Ciments Du Maroc			1,080.00	168,700	14.9%
YTD Worst Return Performers			Price (MAD)	Volume (Shrs)	YTD-15 Return
Alliances Developpement Immobilier			133.10	671,498	(52.1%)
Med Paper			17.00	362,186	(38.9%)
Societe Nationale d'Electrolyse et de Petrochimie			134.10	56,032	(35.2%)
Marocaine de l Industrie du Raffinage			165.10	235,742	(31.5%)
Fenie Brossette			138.50	15,886	(28.2%)
YTD Most Active Stocks by Volume			Price (MAD)	Volume ('000 Shrs)	YTD-15 Return
Douja Prom Addoha			30.10	19,678	(19.9%)
Itissalat Al-Maghrib			126.05	11,403	10.8%
Comp Suc Maroc Et De Raff			181.50	5,049	8.7%
Compagnie d'Assurances et de Reassurances ATLANTA			66.00	3,280	1.1%
Attijariwafa Bank			360.00	3,229	4.7%

YTD-15 Return: accounts in addition to the chg in price the cash & share dividends announced during the year.

Damascus Securities Exchange Daily Report

April 21, 2015

Index Performance relative to Volume



Sectors' Return & Valuation Multiples

	Market Cap. (SRY Mn)	MTD % Chg	P/E (X)	P/B (X)	Yield (%)
Damascus SE	126,589	(2.1%)	6.5	1.1	1.1%
Banking	113,252	(2.0%)	6.28	1.05	0.0%
Services	1,470	(2.0%)	NM	2.85	0.0%
Industrial	3,431	(1.9%)	6.46	1.50	0.0%
Insurance	7,896	(3.6%)	8.43	0.96	17.1%
Agricultural	539	0.0%	NM	3.81	0.0%

Sectors' MTD Return is based on the Change in market cap. and it might not conform with the benchmark return for each sector

Market Breadth

▲ 0 ▼ 4 = 20

Top 10 Stocks by Market Capitalization

	Market Cap. (SRY Mn)	Trailing P/E (X)	ROE* (%)
1- Banque Bemo Saudi Fransi	17,288	8.8	22.0%
2- Qatar National Bank - Syria	15,021	1.7	31.9%
3- Bank Audi Syria	13,238	41.8	4.3%
4- Bank Of Syria And Overseas	9,400	55.7	2.9%
5- Arab Bank- Syria	9,301	8.3	15.9%
6- The Int'l Bank For Trade & Finance	8,374	NM	0.0%
7- Syria International Islamic Bank	8,226	42.4	2.0%
8- Byblos Bank Syria	7,650	16.9	6.5%
9- Al Baraka Bank - Syria	5,865	2.2	34.2%
10- Cham Bank	4,713	2.0	31.2%

Subtotal 94,361 6.08 17.5%

* ROE is based on FY-2013 Net Profit & Shareholders' Equity as of 31-December-13

Today's Top Movers & Most Active Stocks

Best Return Performers	Price (SRY)	Daily Return
No Gainers		

Worst Return Performers	Price (SRY)	Daily Return
United Insurance Co.	149.00	(2.0%)
Qatar National Bank Syria	100.14	(1.8%)
Cham Bank	94.25	(0.8%)
Syria International Islamic Bank	96.78	(0.8%)

Most Active Stocks by Volume	Price (SRY)	Volume (Shrs)
Syria International Islamic Bank	96.78	26,650
Qatar National Bank Syria	100.14	16,805
Cham Bank	94.25	3,300
United Insurance Co.	149.00	2,700
Fransabank Syria	92.75	1,000

Source: KAMCO Research

Market Return, Volatility & Trading Indicators

Market Return	Closing Value	DTD Chg.	DTD % Chg.	MTD % Chg.	YTD-15 % Chg.
DSE Weighted Index	1,218.94	(3.82)	(0.3%)	(1.9%)	(4.1%)
Market Cap (SRY Mn)	126,589	(397)	(0.3%)	(2.1%)	(4.4%)

Benchmark Volatility	Since Jan-14	Since Jan-13	Since Jan-12
DSE Weighted Index	5.1%	10.6%	9.4%

** Annualized Standard Deviation of Daily Returns

Trading Indicators	Today's Value	DTD Chg.	DTD % Chg.	Average Daily YTD-15	YTD-14
Volume (Shrs)	51,585	30,265	142.0%	38,279	74
Value Traded ('000 SRY)	5,326	3,040	133.0%	5,285	9,465
No. of Trades	41	22.0	115.8%	26	38

YTD-2015 Top Movers & Most Active Stocks

YTD Best Return Performers	Price (SRY)	YTD Vol. (Shrs)	YTD-15 Return
Alahliah Vegetable Oil Company E.S.A	228.75	32,830	4.0%
Bank Of Syria And Overseas	235.00	161,522	2.6%
Arab Bank- Syria	184.18	106,417	1.2%
Byblos Bank Syria	125.00	2,713	0.4%

YTD Worst Return Performers	Price (SRY)	YTD Vol. (Shrs)	YTD-15 Return
National Insurance Company	118.25	750	(17.5%)
Qatar National Bank Syria	100.14	361,693	(16.4%)
Syria International Islamic Bank	96.78	434,353	(11.8%)
Cham Bank	94.25	181,615	(9.6%)
Alahliah.co For Transport	162.00	2,950	(8.5%)

YTD Most Active Stocks by Volume	Price (SRY)	YTD Vol. (Shrs)	YTD-15 Return
Al Baraka Bank - Syria	117.29	772,995	(6.8%)
Syria International Islamic Bank	96.78	434,353	(11.8%)
Qatar National Bank Syria	100.14	361,693	(16.4%)
Cham Bank	94.25	181,615	(9.6%)
Bank Of Syria And Overseas	235.00	161,522	2.6%

YTD-15 Return: Is a total return which accounts in addition to the change in price the cash & share dividends announced during the year.

Disclaimer & Important Disclosures

KAMCO is authorized and fully regulated by the Capital Markets Authority ("CMA") and partially regulated by the Central Bank of Kuwait ("CBK")

This document is provided for informational purposes only. Nothing contained in this document constitutes investment, an offer to invest, legal, tax or other advice or guidance and should be disregarded when considering or making investment decisions. In preparing this document, KAMCO did not take into account the investment objectives, financial situation and particular needs of any particular person. Accordingly, before acting on this document, investors should independently evaluate the investments and strategies referred to herein and make their own determination of whether it is appropriate in light of their own financial circumstances and objectives. The entire content of this document is subject to copyright with all rights reserved. This research and the information contained herein may not be reproduced, distributed or transmitted in Kuwait or in any other jurisdiction to any other person or incorporated in any way into another document or other material without our prior written consent.

Analyst Certification

Each of the analysts identified in this report certifies, with respect to the sector, companies or securities that the individual analyses, that (1) the views expressed in this report reflect his or her personal views about all of the subject companies and securities and (2) no part of his or her compensation was, is or will be directly or indirectly dependent on the specific recommendations or views expressed in this report.

KAMCO Ratings

KAMCO investment research is based on the analysis of regional and country economics, industries and company fundamentals. KAMCO company research reflects a long-term (12-month) target price for a company or stock. The ratings bands are:

- * **Outperform:** Target Price represents expected returns $\geq 10\%$ in the next 12 months
- * **Neutral:** Target Price represents expected returns between -10% and $+10\%$ in the next 12 months
- * **Underperform:** Target Price represents an expected return of $<-10\%$ in the next 12 months

In certain circumstances, ratings may differ from those implied by a fair value target using the criteria above. KAMCO policy is to maintain up-to-date fair value targets on the companies under its coverage, reflecting any material changes to the analyst's outlook on a company. Share price volatility may cause a stock to move outside the rating range implied by KAMCO's fair value target. Analysts may not necessarily change their ratings if this happens, but are expected to disclose the rationale behind their view to KAMCO clients.

Any terms and conditions proposed by you which are in addition to or which conflict with this Disclaimer are expressly rejected by KAMCO and shall be of no force or effect. The information contained in this document is based on current trade, statistical and other public information we consider reliable. We do not represent or warrant that such information is fair, accurate or complete and it should not be relied upon as such. KAMCO has no obligation to update, modify or amend this document or to otherwise notify a recipient thereof in the event that any opinion, forecast or estimate set forth herein, changes or subsequently becomes inaccurate. The publication is provided for informational uses only and is not intended for trading purposes. The information on publications does not give rise to any legally binding obligation and/or agreement, including without limitation any obligation to update such information. You shall be responsible for conducting your own investigation and analysis of the information contained or referred to in this document and of evaluating the merits and risks involved in the securities forming the subject matter of this or other such document. Moreover, the provision of certain data/information in the publication may be subject to the terms and conditions of other agreements to which KAMCO is a party.

Nothing in this document should be construed as a solicitation or offer, or recommendation, to acquire or dispose of any investment or to engage in any other transaction, or to provide any investment advice or service. This document is directed at Professional Clients and not Retail Clients within the meaning of CMA rules. Any other persons in receipt of this document must not rely upon or otherwise act upon it. Entities and individuals into whose possession this document comes are required to inform themselves about, and observe such restrictions and should not rely upon or otherwise act upon this document where it is unlawful to make to such person such an offer or invitation or recommendation without compliance with any authorization, registration or other legal requirements.

Risk Warnings

Any prices, valuations or forecasts are indicative and are not intended to predict actual results, which may differ substantially from those reflected. The value of an investment may go up as well as down. The value of and income from any investment may fluctuate from day to day as a result of changes in relevant economic markets (including, without limitation, foreseeable or unforeseeable changes in interest rates, foreign exchange rates, default rates, prepayment rates, political or financial conditions, etc.).

Past performance is not indicative of future results. Any opinions, estimates, valuations or projections (target prices and ratings in particular) are inherently imprecise and a matter of judgment. They are statements of opinion and not of fact, based on current expectations, estimates and projections, and rely on beliefs and assumptions. Actual outcomes and returns may differ materially from what is expressed or forecasted. There are no guarantees of future performance. Certain transactions, including those involving futures, options, and other derivatives, give rise to substantial risk and are not suitable for all investors. This document does not propose to identify or to suggest all of the risks (direct or indirect) which may be associated with the investments and strategies referred to herein.

Conflict of Interest

KAMCO and its affiliates provide full investment banking services, and they and their directors, officers and employees, may take positions which conflict with the views expressed in this document. Salespeople, traders, and other professionals of KAMCO may provide oral or written market commentary or trading strategies to our clients and our proprietary trading desks that reflect opinions that are contrary to the opinions expressed in this document. Our asset management area, our proprietary trading desks and investing businesses may make investment decisions that are inconsistent with the recommendations or views expressed in this document. KAMCO may have or seek investment banking or other business relationships for which it will receive compensation from the companies that are the subject of this document. Facts and views presented in this document have not been reviewed by, and may not reflect information known to, professionals in other KAMCO business areas, including investment banking personnel. United Gulf Bank, Bahrain owns majority of KAMCO's shareholding and this ownership may create, or may create the appearance of, conflicts of interest.

No Liability & Warranty

KAMCO makes neither implied nor expressed representations or warranties and, to the fullest extent permitted by applicable law, we hereby expressly disclaim any and all express, implied and statutory representations and warranties of any kind, including, without limitation, any warranty as to accuracy, timeliness, completeness, and fitness for a particular purpose and/or non-infringement. KAMCO will accept no liability in any event including (without limitation) your reliance on the information contained in this document, any negligence for any damages or loss of any kind, including (without limitation) direct, indirect, incidental, special or consequential damages, expenses or losses arising out of, or in connection with your use or inability to use this document, or in connection with any error, omission, defect, computer virus or system failure, or loss of any profit, goodwill or reputation, even if expressly advised of the possibility of such loss or damages, arising out of or in connection with your use of this document. We do not exclude our duties or liabilities under binding applicable law.



KAMCO Investment Company – K.S.C (Public)

Al-Shaheed Tower, Khalid Bin Al-Waleed Street- Sharq

P.O. BOX : 28873, Safat 13149, State of Kuwait

Tel: (+965) 1852626 Fax: (+965) 22492395

Email : Kamcoird@kamconline.com