

MENA Markets Daily Report

August 16, 2015

	Country	Benchmark		Index Value	DTD Change	YTD 2015	FY 2014
MENA Countries							
In this Report...	Kuwait	KSE Price Index	▲	6,301.12	0.2%	(3.6%)	(13.4%)
Kuwait 2	Kuwait	KSE Weighted Index	▼	418.07	(0.5%)	(4.7%)	(3.1%)
Saudi Arabia 3	Kuwait	KSE - 15 Index	▼	1,002.21	(1.1%)	(5.4%)	(0.8%)
UAE - Dubai 4	Saudi Arabia	TADAWUL All Share Index	▼	8,683.74	(0.3%)	4.2%	(2.4%)
UAE - Abu Dhabi 5	UAE - Dubai	DFM General Index	▼	3,985.40	(0.9%)	5.6%	12.0%
Qatar 6	UAE - Abu Dhabi	ADX General Index	▼	4,730.27	(0.7%)	4.4%	5.6%
Bahrain 7	Qatar	QE 20 Index	▲	11,858.01	0.7%	(3.5%)	18.4%
Oman 8	Bahrain	Bahrain All Share	▼	1,334.47	(0.1%)	(6.5%)	14.2%
Egypt 9	Oman	MSM 30 Index	▼	6,318.62	(0.0%)	(0.4%)	(7.2%)
Jordan 10	Egypt	EGX 30	▼	7,879.82	(0.4%)	(11.7%)	31.6%
Tunisia 11	Jordan	ASE Index	▲	2,106.02	0.4%	(2.7%)	4.8%
Lebanon 12	Lebanon	KAMCO Beirut SE TRW Index	▼	1,110.85	(0.2%)	1.7%	3.5%
Morocco 13	Tunisia	Tunisia Index	▼	5,571.05	(0.4%)	9.5%	16.2%
Syria 14	Morocco	MASI	▼	9,653.11	(0.4%)	0.3%	5.6%
	Syria	DSE Weighted Index	▼	1,207.09	(0.2%)	(5.0%)	1.7%
Emerging Markets							
	China	SSE Composite Index	▲	3,965.34	0.3%	22.6%	52.9%
	Russia	RUSSIAN RTS INDEX (\$)	▲	835.17	0.8%	5.6%	(45.2%)
	India	SENSEX	▲	28,067.31	1.9%	2.1%	29.9%
	Brazil	BOVESPA Stock Index	▼	47,508.41	(1.0%)	(5.0%)	(2.9%)
	Mexico	BOLSA Index	▼	43,746.72	(0.3%)	1.4%	1.0%
	Korea	KOSPI Index	▲	1,983.46	0.4%	3.5%	(4.8%)
	Taiwan	TAIEX Index	▼	8,305.64	(0.1%)	(10.8%)	8.1%
Global Markets							
	World	MSCI World Index	▲	1,743.89	0.1%	2.0%	2.9%
	Asia	MSCI Asia Pacific	▼	138.28	(0.1%)	0.3%	(2.5%)
	Europe	DJ Stoxx 600	▼	386.24	(0.1%)	12.8%	4.4%
	Europe	FTSEurofirst 300	▼	1,528.15	(0.1%)	11.7%	4.0%
	Emerging Markets	MSCI EM Index	▼	863.83	(0.1%)	(9.7%)	(4.6%)
	U.S.A	S&P 500	▲	2,091.54	0.4%	1.6%	11.4%
	U.S.A	DJIA	▲	17,477.40	0.4%	(1.9%)	7.5%
	U.S.A	NASDAQ Composite	▲	5,048.24	0.3%	6.6%	13.4%
	UK	FTSE 100	▼	6,550.74	(0.3%)	(0.2%)	(2.7%)
	Germany	DAX	▼	10,985.14	(0.3%)	12.0%	2.7%
	Japan	NIKKEI 225	▼	20,519.45	(0.4%)	17.6%	7.1%
	Hong Kong	HANG SENG INDEX	▼	23,991.03	(0.1%)	1.6%	1.3%
Commodities							
	Oil	OPEC Crude	▲	47.28	0.4%	(9.1%)	(49.6%)
	Oil	Brent	▼	49.19	(0.9%)	(23.3%)	(45.6%)
	Oil	Kuwait	▼	45.92	(2.0%)	(12.8%)	(51.7%)
	Natural Gas	NYMEX Natural Gas (USD/MMBtu)	▲	2.80	0.5%	(7.0%)	(33.8%)
	Gold	Gold Spot \$/Oz	▼	1,113.79	(0.2%)	(6.2%)	(1.4%)

Investment Research Department
Kamcoird@kamconline.com

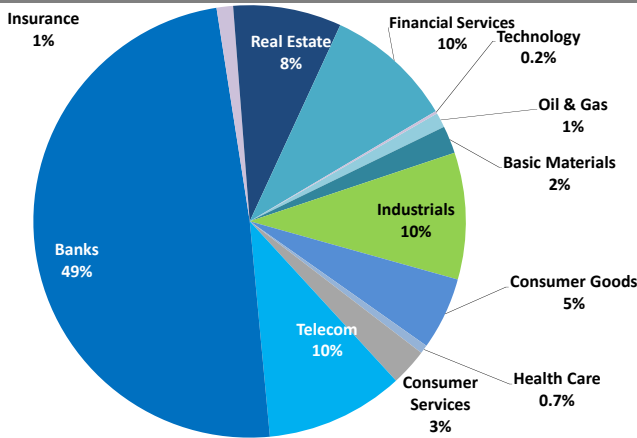
P.O.Box 28873, Safat 13149 Kuwait
Tel: (965) 1852626, Extn: 1153 / 1146
Fax: (965) 22492395

<http://www.kamconline.com>

KAMCO Investment Company - K.S.C
(Public)

Source: Bloomberg & KAMCO Research

Sector Weight by Market Cap



Top 10 Companies by Market Capitalization

Company Name	Market Cap. (Mn KWD)	P/E (X)	ROE* (%)
1- National Bank of Kuwait	4,283.8	15.6	10.5%
2- Kuwait Finance House	2,954.3	22.7	7.7%
3- Zain	1,771.8	9.9	11.8%
4- Ahli United Bank - Bahrain	1,361.5	9.7	14.6%
5- Kuwait Food Co. (Americana)	1,085.4	21.2	13.6%
6- Kuwait Projects Co.	972.6	20.4	10.0%
7- Ahli United Bank - Kuwait	881.9	17.5	15.2%
8- Boubayan Bank	866.6	29.0	10.2%
9- Commercial Bank of Kuwait	861.3	17.2	8.9%
10- Burgan Bank	840.2	13.5	9.9%
Total	15,879	15.62	10.7%

*: ROE is calculated based on TTM 1Q-2015 net profit & shareholders' equity as of 31-March-15

Top Movers and Most Active Stocks

Today's Top % Gainers	Close (KWD)	Change (KWD)	Percent Change
Al Qurain Holding Co.	0.010	0.001	11.8%
National Petroleum Services Co.	0.620	0.050	8.8%
Kuwait Insurance Co.	0.315	0.025	8.6%
Heavy Engineering Ind. & Shipbuilding Co.	0.140	0.010	7.7%
Metal & Recycling Industries Co.	0.080	0.005	6.7%

Today's Top % Losers	Close (KWD)	Change (KWD)	Percent Change
Nafais Holding Co.	0.134	(0.010)	(6.9%)
Equipment Holding Co.	0.074	(0.005)	(6.3%)
Osoul Investment Co.	0.045	(0.003)	(5.3%)
Kuwait Finance & Investment Co.	0.055	(0.003)	(5.2%)
Al-Mal Investment Co.	0.044	(0.002)	(4.3%)

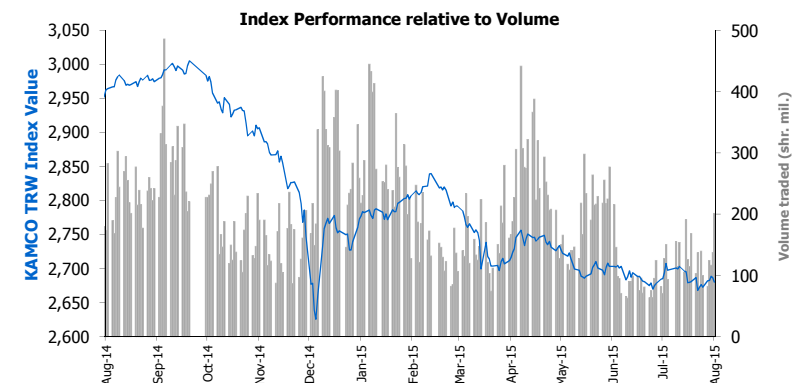
Today's Most Active by Volume	Close (KWD)	Change (KWD)	Volume (Shares)
Al Dar National Real Estate Co.	0.038	0.001	32,790,021
Al-Mal Investment Co.	0.044	(0.002)	28,231,042
Hits Telecom Holding Co.	0.033	(0.001)	17,313,805
Al-Madina for Finance & Investment Co.	0.059	0.000	16,413,282
Manazel Holding Co.	0.042	(0.001)	15,604,180

Source: KAMCO Research

Market Capitalization - Sectors' Return

	Market Cap. (KWD Mn)	DTD %	DTD % Chg	MTD % Chg	YTD % Chg
Kuwaiti Stock Exchange	28,641.7	▼	(0.5%)	(0.0%)	(3.6%)
Oil & Gas	319.6	▲	1.5%	(1.6%)	(18.3%)
Basic Materials	596.7	▲	1.4%	(1.1%)	(8.1%)
Industrials	2,709.2	▲	0.1%	3.2%	(0.7%)
Consumer Goods	1,553.0	▼	(2.9%)	(1.7%)	27.6%
Health Care	190.0	=	0.0%	0.0%	3.4%
Consumer Services	792.3	▲	1.1%	3.1%	1.9%
Telecommunications	2,960.3	▼	(1.2%)	2.4%	(11.6%)
Banks	14,042.8	▼	(0.7%)	(0.5%)	(3.8%)
Insurance	356.3	▲	3.0%	2.7%	(0.2%)
Real Estate	2,317.6	▼	(0.2%)	(2.1%)	(3.1%)
Financial Services	2,749.5	▲	0.1%	(1.0%)	(8.8%)
Technology	54.3	▼	(0.5%)	(0.6%)	(3.5%)

Market Breadth	▲	45	▼	46	=	101
Benchmark Return	Closing Value	DTD Chg	DTD % Chg	MTD % Chg	YTD % Chg	
KSE Price Index	6,301.12	15.5	0.2%	0.8%	(3.6%)	
KSE Weighted Index	418.07	(2.3)	(0.5%)	(0.2%)	(4.7%)	
Kuwait 15 Index	1,002.21	(10.8)	(1.1%)	(1.3%)	(5.4%)	
Market Cap (KWD Mn)	28,642	(152.9)	(0.5%)	(0.0%)	(3.6%)	



Market Trading Data and Volatility

Trading Indicators	Today's Value	DTD Chg	DTD % Chg	Average Daily YTD 2015	YTD 2014
Volume (Shrs Mn)	201.4	63.8	46.3%	185.5	214.4
Value Traded (KWD Mn)	15.6	5.4	52.5%	17.7	25.3
No. of Trades	3,934	826.0	26.6%	4,204	4,642

Market Volatility**	Volatility Since January:				
	2015	2014	2013	2012	2011
KSE Price Index	7.2%	9.4%	10.4%	9.8%	9.6%
KSE Weighted Index	8.1%	9.6%	8.9%	8.6%	9.8%

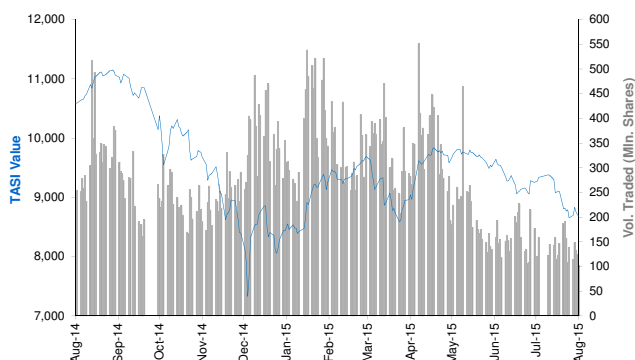
** Annualized Standard Deviation of Daily Returns

Today's Most Active by Value	Close (KWD)	Change (KWD)	Value (KWD)
Al-Mal Investment Co.	0.044	(0.002)	1,323,185
National Bank of Kuwait	0.850	(0.010)	1,268,689
Al Dar National Real Estate Co.	0.038	0.001	1,225,193
Al-Argan International Real Estate Co.	0.194	0.010	1,061,529
Al-Madina for Finance & Investment Co.	0.059	0.000	959,560

Saudi Tadawul Daily Report

August 16, 2015

Index Performance relative to Volume



Top 10 Stocks by Market Capitalization

	Market Cap. (SAR Mn)	P/E (X)	ROE* (%)
1- Saudi Basic Industries Corp	275,700	13.2	12.6%
2- Saudi Telecom	133,520	12.0	18.4%
3- National Commercial Bank	121,640	14.0	18.3%
4- Al-Rajhi Bank	103,675	15.6	15.8%
5- Saudi Electricity Co.	74,707	28.9	4.5%
6- Kingdom Holding Co.	72,598	NM	2.9%
7- Jabal Omar Development Company	67,521	NM	0.0%
8- AL-Marai Co.	57,060	33.4	15.4%
9- Samba Financial Group	52,540	10.4	13.0%
10- SABB	48,750	11.3	16.5%

Subtotal 1,007,711 16.28 12.6%

* ROE is based on TTM 1Q-2015 Net Profit & Shareholders' Equity as of 31-March-15

Today's Top Movers and Most Active Stocks

Best Return Performers	Price (SAR)	Daily Return	Value (SAR 000's)
AXA Cooperative Insurance Co.	23.91	3.2%	64,536
Al Khaleej Training & Education Co.	51.33	2.9%	7,354
ACE Arabia Cooperative Insurance Co.	76.02	2.7%	65,649
Saudi Enaya Cooperative Insurance Co.	24.67	2.5%	9,104
National Petrochemical Co.	23.15	2.3%	7,425

Worst Return Performers	Price (SAR)	Daily Return	Value (SAR 000's)
United International Transportation Co.	54.71	(3.6%)	27,982
Al-Babtain Power & Telecom. Co.	40.55	(3.3%)	8,225
Al-Ahsa Development Co.	13.67	(2.6%)	32,250
Saudi Hotels & Resort Areas Co.	32.88	(2.4%)	2,893
Takween Advanced Industries	64.45	(2.3%)	35,527

Most Active Stocks By Volume	Price (SAR)	Daily Return	Volume ('000 Shrs)
Alinma Bank	21.23	0.1%	18,678
Dar Al Arkan Real Estate Dev. Co.	8.31	(0.4%)	5,341
Saudi Basic Industries Corp	91.90	1.5%	4,870
Al-Etihad Etisalat Co.	29.26	(1.5%)	4,778
ZAIN KSA	11.29	0.1%	2,951

Source: KAMCO Research

Sectors' Return & Valuation Multiples

	Market Cap. (SAR Mn)	MTD Return	P/E (X)	P/BV (X)	Yield (%)
Saudi Stock Exchange	1,937,721	(4.4%)	18.1	2.1	2.5%
Banks & Financial	543,240	(3.5%)	12.9	1.9	2.1%
Petrochemical Industries	443,592	(6.0%)	15.1	1.8	2.8%
Cement	82,370	(5.9%)	13.2	2.6	5.8%
Retail	90,735	(2.6%)	30.2	6.2	1.5%
Energy & Utilities	76,856	(2.0%)	28.0	1.3	3.8%
Agric. & Food Ind.	126,014	(1.6%)	25.0	4.4	2.1%
Telecom	163,589	(4.5%)	23.2	1.9	4.3%
Insurance	49,357	(5.8%)	66.4	2.8	0.3%
Multi-Inv.	79,873	(2.3%)	68.6	2.2	2.6%
Indust. Inv.	71,380	(6.2%)	23.0	1.8	1.5%
Bldg. & Const.	24,862	(8.3%)	44.4	2.3	2.8%
Real Estate Dev.	122,081	(3.8%)	45.0	2.3	0.6%
Transport	32,976	(10.5%)	17.9	2.5	1.9%
Media & Publishing	3,686	(3.5%)	NM	1.7	0.0%
Hotel & Tourism	27,109	(5.4%)	18.2	4.7	1.6%

Sectors' MTD Return is based on the Change in market cap. and it might not conform with the benchmark return for each sector

Market Return, Volatility & Trading Indicators

Market Return	Closing Value	DTD Chg	DTD % Chg	MTD % Chg	YTD-15 % Chg
Tadawul All Share Index	8,683.74	(24.6)	(0.3%)	(4.6%)	4.2%
Market Cap (SAR Mn)	1,937,721	(1,417.8)	(0.1%)	(4.4%)	6.7%
Benchmark Volatility**	Since Jan-14	Since Jan-13	Since Jan-12	Since Jan-11	Since Jan-10
Tadawul All Share Index	19.6%	16.9%	15.8%	16.8%	16.6%
** Annualized Standard Deviation of Daily Returns					
Trading Indicators	Today's Value	DTD Chg	DTD % Chg	Average Daily YTD-15	YTD-14
Volume (Mn Shares)	102	(23)	(18.3%)	275	280
Value Traded (SAR Mn)	2,913	(784)	(21.2%)	7,476	8,514
No. of Trades	72,894	(10,194)	(12.3%)	132,204	143,125

Market Breadth 55 102 12

YTD-2015 Top Movers and Most Active Stocks

YTD-15 Best Return Performers	Price (SAR)	YTD Val (SAR Mn)	YTD Vol ('000 Shrs)	YTD-15 Return
The Co for Cooperative Ins.	104.14	7,464	93,394	107.5%
Saudi Transport & Investment Co.	66.81	10,134	193,525	98.8%
Buruj Cooperative Insurance Co.	27.50	3,452	88,760	59.9%
Saudi Company for Hardware	110.16	4,985	37,880	57.5%
Al-Rajhi Co. for Cooperative Ins.	28.00	5,048	154,651	55.6%

YTD-15 Worst Return Performers	Price (SAR)	YTD Val (SAR Mn)	YTD Vol ('000 Shrs)	YTD-15 Return
Middle East Specialised Cables	12.20	11,266	603,761	(44.3%)
SALAMA Cooperative Insurance Company	15.58	1,731	69,198	(43.7%)
Solidarity Saudi Takaful co.	12.29	7,009	365,606	(39.4%)
Mediterranean & Gulf Ins. & Re-ins Co.	31.54	9,709	184,943	(36.8%)
National Industrialization Co	17.10	12,016	497,852	(36.0%)

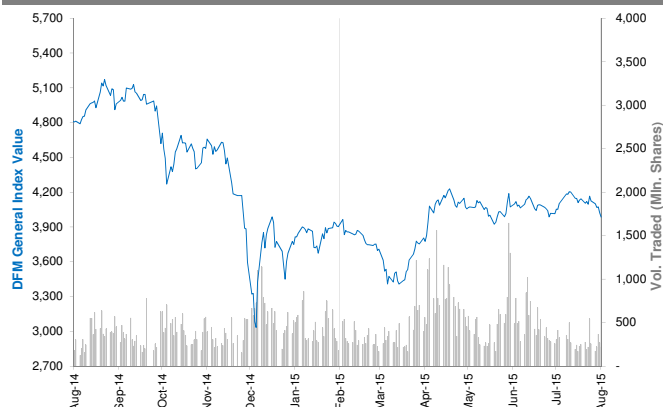
YTD-15 Most Active Stocks by Volume	Price (SAR)	YTD Val (SAR Mn)	YTD Vol ('000 Shrs)	YTD-15 Return
Dar Al Arkan Real Estate Dev. Co.	8.31	59,416	6,327,256	2.5%
Alinma Bank	21.23	105,224	4,623,499	4.7%
Saudi Kayan	10.00	24,963	2,040,286	(8.7%)
ZAIN KSA	11.29	18,597	1,976,276	(5.3%)
Saudi Arabian Mining Co.	38.85	49,987	1,252,024	27.5%

YTD-15 Return: Is a total return which accounts in addition to the change in price the cash & share dividends announced during the year.

Dubai Financial Market Daily Report

August 16, 2015

Index Performance relative to Volume



Top 10 Stocks by Market Capitalization

	Market Cap (AED Mn)	P/E (X)	ROE* (%)
1- Emirates NBD	56,689	9.8	12.5%
2- EMAAR Properties	53,626	13.9	10.8%
3- EMAAR MALLS GROUP	39,694	22.2	12.6%
4- Dubai Islamic Bank	29,021	10.1	15.7%
5- Emirates Integrated Telecom. (DU)	24,046	11.4	28.4%
6- Mashreq Bank	19,782	8.0	15.4%
7- DAMAC Properties Dubai	19,611	4.4	66.4%
8- Commercial Bank of Dubai	14,798	12.2	16.1%
9- Dubai Financial Market	14,480	23.7	7.8%
10- Arabtec Holding P.J.S.C.	9,802	NM	NM
Subtotal	298,603	11.56	14.2%

* ROE is based on TTM 1Q-2015 Net Profit & Shareholders' Equity as of 31-March-15

Today's Top Movers and Most Active Stocks

Best Return Performers	Price (AED)	Daily Return	Value Traded (AED)
Islamic Arab Insurance Co.	0.600	1.7%	2,987,922
Emirates Integrated Telecom. (DU)	5.260	1.3%	90,955
Aramex	3.390	1.2%	1,121,100
Gulf Navigation Holding	0.431	0.2%	7,752,745

Worst Return Performers	Price (AED)	Daily Return	Value Traded (AED)
Ektitab Holding Co.	0.500	(5.5%)	163,308
Al Salam Bank - Sudan	1.680	(4.0%)	46,360
Gulf Finance House	0.715	(2.2%)	35,157,399
National General Cooling Co. (Tabreed)	1.430	(2.1%)	1,279,688
Dubai Islamic Bank	7.340	(2.0%)	54,475,486

Most Active Stocks by Volume	Price (AED)	Daily Return	Volume Traded ('000 Shrs)
Gulf Finance House	0.715	(2.2%)	48,854
Hits Telecom Holding Co.	0.401	(1.0%)	20,578
Gulf Navigation Holding	0.431	0.2%	17,862
Amlak Finance	2.170	(1.8%)	16,163
EMAAR Properties	7.490	(1.8%)	15,736

Source: KAMCO Research

Sectors' Return & Valuation Multiples

	Market Cap. (AED Mn)	MTD % Chg	P/E (X)	P/BV (X)	Yield (%)
Dubai Financial Market	375,204	(2.9%)	12.4	1.4	2.3%
Banking	137,481	(2.1%)	10.5	1.3	3.1%
Consumer Staples	11,022	(2.9%)	NM	1.4	0.7%
Investment & Financial	29,232	(5.9%)	13.5	1.3	3.5%
Insurance	6,019	(2.5%)	7.7	0.6	6.1%
Industrial	4,651	4.8%	36.9	0.6	1.9%
Real Estate & Construction	131,645	(3.6%)	NM	1.8	0.9%
Telecommunication	24,335	(2.2%)	11.5	2.9	3.8%
Transportation	27,916	(1.0%)	30.8	1.5	2.2%
Services	2,905	(6.7%)	2.9	0.4	1.3%

Sectors' MTD Return is based on the Change in market cap. and it might not conform with the benchmark return for each sector

Market Breadth	▲	4	▼	24	=	32
----------------	---	---	---	----	---	----

Market Return, Volatility & Trading Indicators

Market Return	Closing Value	DTD Chg	DTD % Chg	MTD % Chg	YTD-15 % Chg
DFM General Index	3,985.40	(36.7)	(0.9%)	(3.8%)	5.6%
Market Cap (AED Mn)	375,204	(2,456)	(0.7%)	(2.9%)	11.9%

Benchmark Volatility**	Volatility Since:				
	Jan-2014	Jan-2013	Jan-2012	Jan-2011	Jan-2010
DFM General Index	32.9%	29.9%	26.9%	25.2%	24.5%

** Annualized Standard Deviation of Daily Returns

Trading Indicators	Today's Value	DTD Chg	DTD % Chg	Average Daily YTD-15	YTD-14
Volume (Mn Shares)	219	(48.5)	(18.1%)	470	773
Value Traded (AED Mn)	394	(55.6)	(12.4%)	744	1,791
No. of Trades	4,462	(1,076)	(19.4%)	7,163	10,880

YTD-2015 Top Movers and Most Active Stocks

YTD-15 Best Return Performers	Price (AED)	Value Traded (AED '000)	Volume ('000 Shrs)	YTD-15 Return
Takaful Emarat	1.780	187,032	142,768	122.5%
Amlak Finance	2.170	11,289,748	5,056,647	112.7%
Al-Madina for Finance & Investment	0.700	222,040	410,136	93.9%
Dubai Parks And Resorts	1.240	4,777,302	4,754,332	69.9%
United Kaipara Dairies Co.	7.910	12	1	52.1%

YTD-15 Worst Return Performers	Price (AED)	Value Traded (AED '000)	Volume ('000 Shrs)	YTD-15 Return
Gulf Navigation Holding	0.431	631,363	1,709,592	(209.9%)
Int'l Financial Advisors Co.	0.524	3,293	6,483	(38.4%)
Ajman Bank	1.880	284,467	125,879	(29.5%)
Arabtec Holding P.J.S.C.	2.230	15,379,215	5,503,417	(23.9%)
National Cement Co.	3.600	52,776	12,744	(20.0%)

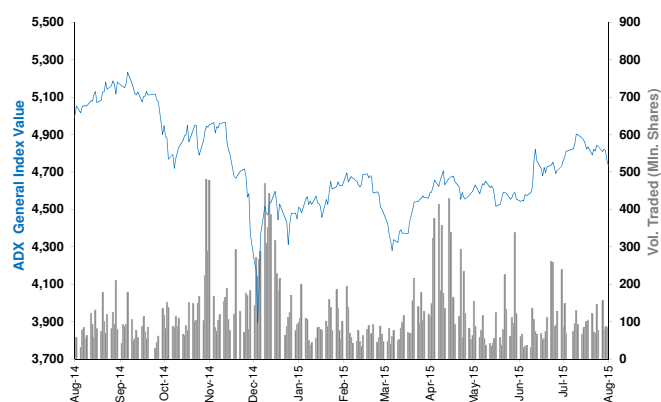
YTD-15 Most Active Stocks by Volume	Price (AED)	Value Traded (AED '000)	Volume ('000 Shrs)	YTD-15 Return
Gulf Finance House	0.715	9,940,424	19,597,310	(4.3%)
Union Properties	1.090	8,776,508	7,105,499	(5.4%)
Arabtec Holding P.J.S.C.	2.230	15,379,215	5,503,417	(23.9%)
Amlak Finance	2.170	11,289,748	5,056,647	112.7%
Deyaar Development	0.768	4,072,969	4,948,756	(9.6%)

YTD-15 Return: Is a total return which accounts in addition to the change in price the cash & share dividends announced during the year.

Abu Dhabi Securities Exchange Daily Report

August 16, 2015

Index Performance relative to Volume



Top 10 Stocks by Market Capitalization

	Market Cap. (AED Mn)	P/E (X)	ROE* (%)
1- Emirates Telecom. Co.	117,406	13.0	22.5%
2- First Gulf Bank	67,725	11.8	18.2%
3- National Bank Of Abu Dhabi	49,492	8.8	14.9%
4- Abu Dhabi Commercial Bank	47,563	10.9	17.1%
5- AL DAR Properties Co.	20,128	8.4	13.3%
6- Union National Bank	18,572	8.8	12.6%
7- Abu Dhabi Islamic Bank	15,001	8.4	12.7%
8- National Bank of Ras Al-Khaimah	12,689	8.6	19.8%
9- United Arab Bank	6,417	10.6	20.6%
10- National Bank of Fujairah	5,126	9.5	13.8%
Subtotal	360,119	10.70	17.0%

* ROE is based on TTM 1Q-2015 Net Profit & Shareholders' Equity as of 31-March-15

Today's Top Movers and Most Active Stocks

Best Return Performers	Price (AED)	Daily Return	Value (AED)
National Marine Dredging Co.	5.75	15.0%	63,250
Abu Dhabi Ship Building Co.	3.80	9.2%	710,192
Methaq Takaful Insurance Co.	1.11	1.8%	9,506,142
Ras Al Khaimah Properties	0.64	1.6%	1,584,309
Sharjah Islamic Bank	1.70	0.6%	29,912

Worst Return Performers	Price (AED)	Daily Return	Value (AED)
Bank Of Sharjah	1.56	(7.1%)	2,377
Abu Dhabi National Energy Co. (TAQA)	0.67	(4.3%)	172,455
Abu Dhabi Islamic Bank	5.00	(3.5%)	1,217,220
AL DAR Properties Co.	2.56	(2.7%)	35,340,377
AGTHIA Group	7.70	(2.5%)	113,684

Most Active Stocks by Volume	Price (AED)	Daily Return	Volume ('000 Shrs)
AL DAR Properties Co.	2.56	(2.7%)	13,649
Dana Gas	0.58	0.0%	11,723
Methaq Takaful Insurance Co.	1.11	1.8%	8,539
Eshraq Properties Co.	0.75	(1.3%)	5,702
First Gulf Bank	15.05	(0.3%)	3,661

Source: KAMCO Research

Sectors' Return & Valuation Multiples

	Market Cap. (AED Mn)	MTD % Chg	P/E (X)	P/BV (X)	Dividend Yield (%)
ADX	461,535	(2.1%)	8.6	1.5	4.1%
Banks	242,323	(1.5%)	10.2	1.5	4.4%
Inv. & Financial Services	4,874	(2.3%)	0.3	1.3	11.7%
Real Estate	23,152	(4.8%)	11.9	1.0	0.7%
Energy	7,999	1.7%	NM	0.5	3.6%
Consumer Staples	5,981	(0.7%)	18.5	1.9	1.4%
Industrial	12,522	1.4%	24.3	0.8	4.6%
Insurance	8,961	0.1%	NM	0.5	4.3%
Telecommunication	145,286	(3.8%)	13.3	2.3	3.8%
Services	10,437	1.8%	14.1	0.7	3.4%

Sectors' MTD Return is based on the Change in market cap. and it might not conform with the benchmark return for each sector

Market Breadth	▲ 6 ▼ 14 = 45
----------------	---------------

Market Return, Volatility & Trading Indicators

Market Return	Closing Value	DTD Chg	DTD % Chg	MTD % Chg	YTD-15 % Chg
ADX General Index	4,730.27	(35.49)	(0.7%)	(2.2%)	4.4%
Market Cap (AED Mn)	461,535	(3,928)	(0.8%)	(2.1%)	(0.5%)

Benchmark Volatility**	Volatility Since:				
	Jan-2014	Jan-2013	Jan-2012	Jan-2011	Jan-2010
ADX General Index	19.1%	15.9%	13.5%	12.7%	12.1%

** Annualized Standard Deviation of Daily Returns

Trading Indicators	Today's Value	DTD Chg	DTD % Chg	Average Daily YTD-15	YTD-14
Volume (Mn Shares)	56	(28.6)	(33.7%)	108	284.5
Value Traded (AED Mn)	179	(42.4)	(19.1%)	225	729.0
No. of Trades	1,425	(320)	(18.3%)	1,798	3,996

YTD-2015 Top Movers and Most Active Stocks

YTD-15 Best Return Performers	Price (AED)	YTD-Val ('000 AED)	Volume ('000 Shrs)	YTD-15 Return
Abu Dhabi Ship Building Co.	3.80	36,729	14,835	100.0%
Methaq Takaful Insurance Co.	1.11	416,437	426,962	52.1%
Fujairah Building Industrial Co.	1.90	674	476	40.9%
Gulf Medical Projects	2.80	1,186	458	40.0%
Emirates Telecom. Co.	13.50	3,875,209	317,043	35.6%

YTD-15 Worst Return Performers	Price (AED)	YTD-Val ('000 AED)	Volume ('000 Shrs)	YTD-15 Return
Ooredoo	84.65	3,905	37	(41.0%)
Al Dhafra Insurance Co.	4.80	351	61	(37.7%)
Abu Dhabi National Hotels	2.85	39,024	13,746	(28.8%)
National Bank Of Abu Dhabi	10.45	1,023,015	87,064	(25.4%)
Green Crescent Insurance Co.	0.57	2,029	3,286	(23.0%)

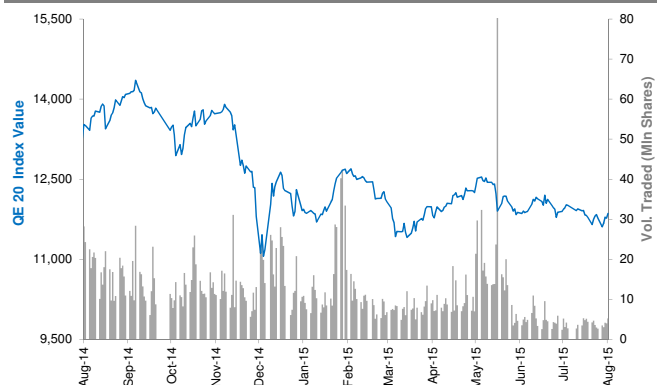
YTD-15 Most Active Stocks by Volume	Price (AED)	YTD-Val ('000 AED)	Volume ('000 Shrs)	YTD-15 Return
Eshraq Properties Co.	0.75	5,196,291	6,040,619	4.1%
Dana Gas	0.58	1,669,496	3,197,307	16.0%
AL DAR Properties Co.	2.56	7,585,378	2,864,918	(3.4%)
Ras Al Khaimah Properties	0.64	1,139,933	1,583,744	(13.5%)
Waha Capital Co.	2.42	1,565,639	553,353	(14.2%)

YTD-15 Return: Is a total return which accounts in addition to the change in price the cash & share dividends announced during the year.

Qatar Exchange Daily Report

August 16, 2015

Index Performance relative to Volume



Sectors' Return & Valuation Multiples

	Market Cap. (QAR Mn)	MTD % Chg	P/E (X)	P/B (X)	Yield (%)
Qatar Exchange	625,794	0.0%	13.8	2.1	4.1%
Banking & Finance	251,307	0.3%	12.7	2.2	4.4%
Goods & Consumer Services	28,282	(2.6%)	15.0	2.4	4.4%
Industrial	176,900	(0.4%)	17.9	3.2	4.2%
Insurance	26,256	3.2%	14.0	2.0	2.8%
Real Estate	77,392	0.7%	9.8	1.3	3.1%
Telecom	38,493	(1.6%)	20.9	1.4	3.8%
Transport	27,164	(0.4%)	12.8	1.6	5.1%

Sectors' MTD Return is based on the Change in market cap. and it might not conform with the benchmark return for each sector

Market Breadth

▲ 28 ▼ 11 = 4

Top 10 Stocks by Market Capitalization

	Market Cap. (QAR Mn)	P/E (X)	ROE* (%)
1- Qatar National Bank	126,651	11.8	20.0%
2- Industries Qatar	83,188	14.6	18.8%
3- Ezdan Holding Group Co.	47,427	33.3	4.8%
4- Masraf Al Rayan	33,713	16.2	19.7%
5- Mesaieed Petrochemical Holding Co.	28,518	19.7	10.9%
6- Qatar Islamic Bank	26,583	16.0	14.0%
7- Ooredoo (formerly Q-Tel)	25,626	14.7	8.3%
8- Qatar Electricity & Water Co.	24,255	15.4	25.4%
9- Commercial Bank of Qatar	19,173	10.7	12.6%
10- Qatar Insurance Co.	19,108	27.9	12.0%

Subtotal 434,241 13.42 17.3%

* ROE is based on TTM 1Q-2015 Net Profit & Shareholders' Equity as of 31-March-15

Today's Top Movers and Most Active Stocks

Best Return Performers	Price (QAR)	Daily Return	Value (QAR)
Al Ahli Bank of Qatar	51.60	3.2%	23,324
Barwa Real Estate Co.	48.80	2.6%	32,262,862
Diala Brokerage & Inv. Hldg. Co.	22.85	2.5%	545,833
Mesaieed Petrochemical Holding Co.	22.70	2.2%	4,556,229
Qatar Fuel Co. (Woqod)	160.50	1.8%	8,884,694

Worst Return Performers	Price (QAR)	Daily Return	Value (QAR)
Zad Holding Co.	95.90	(4.1%)	153,968
Qatar Islamic Insurance	79.70	(2.1%)	23,224
Mannai Corporation	106.80	(1.8%)	770,957
Al Khaleej Commercial Bank	22.01	(1.7%)	777,924
Al Meera Consumer Goods Co.	269.20	(1.4%)	497,519

Most Active Stocks by Volume	Price (QAR)	Daily Return	Volume (Shares)
United Development Co.	25.75	0.8%	736,837
Barwa Real Estate Co.	48.80	2.6%	663,828
Gulf International Services	66.60	0.6%	488,178
Ezdan Holding Group Co.	17.88	1.6%	472,220
Masraf Al Rayan	44.95	0.1%	466,868

Source: KAMCO Research

Market Return, Volatility & Trading Indicators

Market Return	Closing Value	DTD Chg	DTD % Chg	MTD % Chg	YTD-15 % Chg
QE 20 Index	11,858.01	85.35	0.7%	0.6%	(3.5%)
Market Cap (QAR Mn)	625,794	4,120	0.7%	0.0%	(7.5%)

Benchmark Volatility**	QE 20 Volatility Since:				
	Jan-2014	Jan-2013	Jan-2012	Jan-2011	Jan-2010
QE 20 Index	17.2%	16.2%	14.1%	14.2%	14.3%

** Annualized Standard Deviation of Daily Returns

Trading Indicators	Today's Value	DTD Chg	DTD % Chg	Average Daily YTD-15	YTD-14
Volume ('000 Shares)	5,240	1,227	30.6%	10,322	19,565
Value Traded (QAR Mn)	269	50	22.8%	424	832
No. of Trades	3,900	689	21.5%	5,185	8,992

YTD-2015 Top Movers and Most Active Stocks

YTD-15 Best Return Performers	Price (QAR)	YTD Value (QAR 000's)	YTD Volume (Shares 000's)	YTD-15 Return
Qatari German Co. for Medical Devices	15.50	717,803	46,481	52.7%
Medicare Group	176.50	786,369	5,082	50.9%
Al Meera Consumer Goods Co.	269.20	775,977	3,376	34.6%
Gulf Warehousing Co.	75.40	451,730	6,845	33.7%
Qatar Insurance Co.	103.50	2,029,876	21,561	31.4%

YTD-15 Worst Return Performers	Price (QAR)	YTD Value (QAR 000's)	YTD Volume (Shares 000's)	YTD-15 Return
Ooredoo	80.00	1,299,493	12,977	(35.4%)
Diala Brokerage & Inv. Hldg. Co.	22.85	584,965	15,032	(31.7%)
Gulf International Services	66.60	5,311,643	59,728	(31.4%)
Mesaieed Petrochemical Holding Co.	22.70	852,559	31,794	(23.1%)
Industries Qatar	137.50	4,472,788.8	30,771.48	(18.2%)

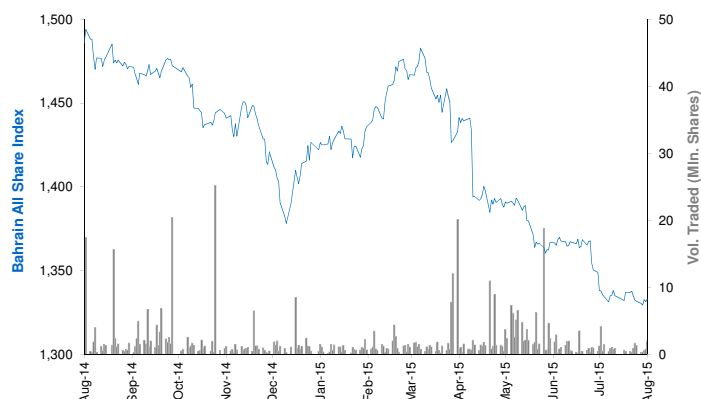
YTD-15 Most Active Stocks by Vol.	Price (QAR)	YTD Value (QAR 000's)	YTD Volume (Shares 000's)	YTD-15 Return
Ezdan Holding Group Co.	17.88	6,148,406	339,725	19.8%
Vodafone Qatar	15.22	3,531,191	204,021	(7.5%)
Barwa Real Estate Co.	48.80	8,054,240	168,334	16.5%
Mazaya Qatar R.E Development Co.	17.70	1,628,724	83,595	(3.0%)
Masraf Al Rayan	44.95	3,810,878	82,252	1.7%

YTD-15 Return: Is a total return which accounts in addition to the change in price the cash & share dividends announced during the year.

Bahrain Bourse Daily Report

August 16, 2015

Index Performance relative to Volume



Sectors' Return & Valuation Multiples

	Market Cap. (BHD Mn)	MTD % Chg	P/E (X)	P/B (X)	Yield (%)
Bahrain Bourse	7,859	0.3%	9.7	1.0	3.6%
Commercial Banks	3,465	0.3%	10.6	1.4	3.6%
Investment	2,239	0.8%	9.3	0.7	3.8%
Insurance	156	(0.5%)	12.0	0.8	4.4%
Service	1,078	1.0%	11.3	1.1	2.2%
Hotel & Tourism	208	0.5%	11.7	1.0	1.5%
Industrial	713	(2.0%)	6.1	0.7	5.5%

Sectors' MTD Return is based on the Change in market cap. and it might not conform with the benchmark return for each sector

Market Breadth

▲	2	▼	2	=	36
---	---	---	---	---	----

Top 10 Stocks by Market Capitalization

	Market Cap. (BHD Mn)	P/E (X)	ROE* (%)
1- Ahli United Bank (Price in USD)	1,733	9.03	15.8%
2- National Bank of Bahrain	766	14.23	14.7%
3- Arab Banking Corp. (Price in USD)	733	6.50	7.9%
4- Aluminum Bahrain	693	5.95	12.5%
5- Bahrain Telecommunications Co.	559	12.51	8.7%
6- Bank of Bahrain and Kuwait	465	9.13	14.7%
7- United Gulf Bank	325	NM	2.6%
8- Al Salam Bank	295	19.28	4.9%
9- Al Baraka Banking (Price in USD)	284	4.86	12.2%
10- Gulf Finance House (Price in USD)	256	52.48	1.8%
Subtotal	6,109	9.35	10.9%

* ROE is based on TTM 1Q2015 Net Profit & Shareholders' Equity as of 31-March-15

Today's Top Movers and Most Active Stocks

Best Return Performers	Price (BHD)	Daily Return	Value (BHD)
National Bank of Bahrain	0.740	0.7%	45,462
Nass Corporation	0.163	0.6%	4,716

Worst Return Performers	Price (BHD)	Daily Return	Value (BHD)
Bahrain Telecommunications Co.	0.336	(1.8%)	23,632
Aluminum Bahrain	0.488	(0.4%)	5,366

Most Active Stocks by Volume	Price (BHD)	Daily Return	Volume (Shares)
AlKhaleeji Commercial Bank	0.065	0.0%	79,158
Bahrain Telecommunications Co.	0.336	(1.8%)	70,533
National Bank of Bahrain	0.740	0.7%	61,839
Nass Corporation	0.163	0.6%	29,300
Arab Insurance Group (USD)	0.460	0.0%	12,009

Source: KAMCO Research

Market Return, Volatility & Trading Indicators

Market Return	Closing Value	DTD Chg	DTD % Chg	MTD % Chg	YTD-15 % Chg
Bahrain All Share Index	1,334.47	(1.25)	(0.1%)	0.2%	(6.5%)
Market Cap (BHD Mln)	7,858.62	(1.66)	(0.0%)	0.3%	(2.9%)

Benchmark Volatility**

	Jan-2014	Jan-2013	Jan-2012	Jan-2011	Jan-2010
Bahrain All Share Index	7.11%	6.9%	6.8%	7.3%	7.8%

** Annualized Standard Deviation of Daily Returns

Trading Indicators	Today's Value	DTD Chg	DTD % Chg	Average Daily YTD-15	YTD-14
Volume ('000 Shares)	276	(2)	(0.8%)	1,805	5,921
Value Traded (BHD '000)	91	28	44.4%	401	1,382
No. of Trades	24	(3)	(11.1%)	47	79

YTD-2015 Top Movers and Most Active Stocks

YTD-15 Best Return Performers	Price (BHD)	YTD-Val (BHD '000)	YTD Vol (Shares)	YTD-15 Return
AlKhaleeji Commercial Bank	0.065	4,368	73,783,491	51.2%
BANADER Co. For Hotels	0.077	27	404,077	37.5%
Al Salam Bank	0.138	3,433	25,926,025	37.0%
Al-Ahlia Insurance Co.	0.330	977	2,965,587	22.2%
Bahrain Toursim Co.	0.264	85	349,916	20.0%

YTD-15 Worst Return Performers	Price (BHD)	YTD-Val (BHD '000)	YTD Vol (Shares)	YTD-15 Return
Takaful International Co.	0.100	2,502	26,054,619	(31.0%)
United Gulf Investment Corporation	0.100	10.0	99,114	(24.8%)
Bank of Bahrain and Kuwait	0.430	8,221	18,688,425	(16.8%)
Al Baraka Banking Group (USD)	0.675	968	3,593,853	(14.5%)
Inovest BSC. (USD)	0.180	108	1,584,146	(14.3%)

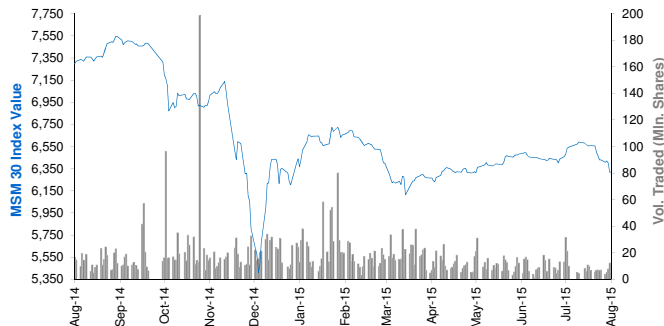
YTD-15 Most Active Stocks by Volume	Price (BHD)	YTD-Val (BHD '000)	YTD Vol (Shares)	YTD-15 Return
AlKhaleeji Commercial Bank	0.065	4,368	73,783,491	51.2%
Ahli United Bank (USD)	0.715	18,213	62,942,172	(3.7%)
Takaful International Co.	0.100	2,502	26,054,619	(31.0%)
Al Salam Bank	0.138	3,433	25,926,025	37.0%
Bank of Bahrain and Kuwait	0.430	8,221	18,688,425	(16.8%)

YTD-15 Return: Is a total return which accounts in addition to the change in price the cash & share dividends announced during the year.

Muscat Securities Market Daily Report

August 16, 2015

Index Performance relative to Volume



Sectors' Return & Valuation Multiples

	Market Cap. (OMR Mn)	MTD % Chg	P/E (X)	P/B (X)	Yield (%)
Muscat Securities Mkt	8,045	(3.0%)	10.54	1.49	3.9%
Financial	3,532	(4.4%)	8.66	1.05	3.7%
Industrial	1,078	(3.0%)	12.09	1.70	4.8%
Services	3,435	(1.4%)	12.93	2.43	3.9%

Sectors' MTD Return is based on the Change in market cap. and it might not conform with the benchmark return for each sector

Market Breadth	▲	7	▼	10	=	42
----------------	---	---	---	----	---	----

Top 10 Stocks by Market Capitalization

	Market Cap. (OMR Mn)	P/E (X)	ROE* (%)
1- Oman Telecom Co.	1,313	10.71	22.3%
2- Bank Muscat	1,187	7.12	13.2%
3- Ooredoo	500	12.58	21.5%
4- National Bank of Oman	456	8.66	14.9%
5- Bank Dhofar	417	9.93	12.7%
6- Ahli Bank	308	11.99	15.5%
7- Raysut Cement	284	11.26	19.0%
8- HSBC Bank Oman	264	20.48	4.3%
9- Sembcorp Salalah	247	34.49	9.6%
10- Bank Sohar	232	8.12	14.7%

Subtotal	5,408	9.95	15.0%
----------	-------	------	-------

* ROE is based on TTM 1Q2015 Net Profit & Shareholders' Equity as of 31-March-15

Today's Top Movers and Most Active Stocks

Best Return Performers	Price (OMR)	Daily Return	Value (OMR)
United Power	1.965	9.8%	18,150
National Bank of Oman	0.340	2.4%	10,200
Oman & Emirates Investment	0.111	1.8%	42,130
National Gas Co.	0.354	1.7%	7,420
Oman Telecom Co.	1.750	1.2%	863,960

Worst Return Performers	Price (OMR)	Daily Return	Value (OMR)
Galfar Engineering	0.112	(2.6%)	27,260
Al Maha Petroleum Products Mktg. Co.	2.055	(2.1%)	139,280
Bank Dhofar	0.270	(1.8%)	85,820
Al Batinah Dev. Inv. Holding	0.113	(1.7%)	15,220
Al Sharqia Inv. Holding	0.127	(1.6%)	7,300

Most Active Stocks by Volume	Price (OMR)	Daily Return	Volume (Shares)
Bank Muscat	0.518	(0.8%)	1,459,308
Al Anwar Holding	0.210	1.0%	1,348,158
Oman Telecom Co.	1.750	1.2%	493,612
Oman & Emirates Investment	0.111	1.8%	379,288
Al Anwar Ceramic Tiles Co.	0.392	(1.0%)	338,363

Source: KAMCO Research

Market Return, Volatility & Trading Indicators

Market Return	Closing Value	DTD Chg	DTD % Chg	MTD % Chg	YTD-15 % Chg
MSM 30 Index	6,318.62	(1.91)	(0.0%)	(3.7%)	(0.4%)
Market Cap (OMR Mn)	8,044.89	3.29	0.0%	(3.0%)	4.0%

Benchmark Volatility**	Volatility Since:				
	Jan-2014	Jan-2013	Jan-2012	Jan-2011	Jan-2010
MSM 30 Index	13.6%	11.9%	10.9%	11.2%	10.8%

** Annualized Standard Deviation of Daily Returns

Trading Indicators	Today's Value	DTD Chg	DTD % Chg	Average Daily YTD-15	YTD-14
--------------------	------------------	------------	--------------	-------------------------	--------

Volume ('000 Shares)	6,382	(5,974)	(48.3%)	15,339	22,050
Value Traded (OMR '000)	2,906	(4,142)	(58.1%)	4,628	8,392
No. of Trades	493	(75)	(13.2%)	854	1,294

YTD-2015 Top Movers and Most Active Stocks

YTD-15 Best Return Performers	Price (OMR)	YTD-Value (OMR 000's)	YTD Vol. (Shares 000's)	YTD-15 Return
Gulf International Chemicals	0.261	11,004	46,261	71.7%
ONIC. Holding	0.480	7,819	18,944	51.9%
United Power	1.965	326	184	48.3%
Al Suwadi Power	2.230	3,321	16,352	32.2%
Al Batinah power	0.225	2,866	14,074	31.6%

YTD-15 Worst Return Performers	Price (OMR)	YTD-Value (OMR 000's)	YTD Volume (Shares 000's)	YTD-15 Return
Renaissance Services	0.224	14,130	35,519	(52.7%)
Port Services Corporation	0.180	486	1,796	(49.2%)
Al Jazeera Steel Products Co.	0.225	3,147	10,836	(33.0%)
Galfar Engineering	0.112	15,295	102,398	(30.4%)
National Gas Co.	0.225	3,066	6,968	(29.4%)

YTD-15 Most Active Stocks by Volume	Price (OMR)	YTD-Value (OMR 000's)	YTD Volume (Shares 000's)	YTD-15 Return
Al Anwar Holding	0.210	127,672	505,763	26.4%
Gulf Investment Services	0.122	32,180	199,734	(14.1%)
Bank Muscat	0.518	109,601	196,735	(6.5%)
Oman & Emirates Investment	0.111	24,667	195,830	(9.8%)
Global Financial Investment Co.	0.119	17,581	150,936	(2.5%)

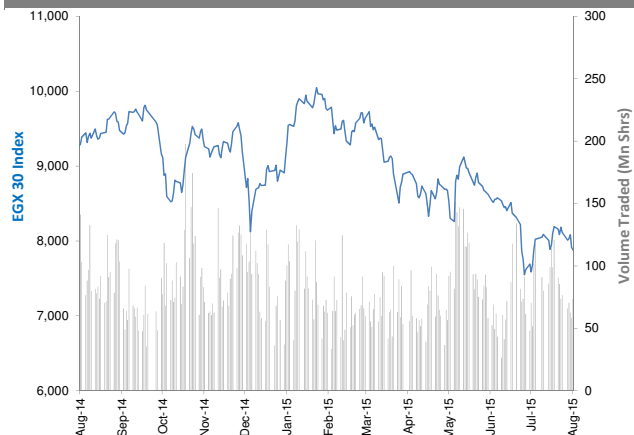
YTD-15 Return: Is a total return which accounts in addition to the change in price the cash & share dividends announced during the year.

The Egyptian Exchange Daily Report

(The bulletin covers the top 60 companies by Mkt. Cap out of 336 listed companies)

August 16, 2015

Index Performance relative to Volume



Sectors' Return & Valuation Multiples

	Market Cap. (EGP Mn)	MTD % Chg	P/E (X)	P/BV (X)	Yield (%)
The Egyptian Exchange	329,835	(2.8%)	16.5	1.4	2.3%
Banking & Finance	76,623	(2.2%)	9.9	2.2	2.0%
Basic Resources	14,072	(0.8%)	NM	1.5	4.1%
Chemical	21,053	(0.7%)	8.4	3.0	4.2%
Construction & Material	77,347	(5.7%)	16.7	0.7	3.2%
Financial Services	18,488	(6.6%)	36.0	0.8	1.7%
Food & Beverage	7,611	1.2%	21.1	2.1	3.1%
Healthcare & Pharma.	6,982	8.3%	21.8	3.6	0.0%
Ind. Goods, Services, Auto.	12,708	(2.4%)	20.7	1.6	1.8%
Media	535	5.2%	17.0	0.3	0.0%
Oil & Gas	3,237	(1.1%)	4.5	1.2	18.6%
Personal & Household	17,409	1.4%	14.5	1.5	0.0%
Real Estate	33,524	(6.1%)	19.8	0.9	0.9%
Telecommunication	36,138	(3.9%)	30.9	1.3	2.6%
Travel & Leisure	4,108	(2.8%)	21.9	1.1	0.0%

Sectors' MTD Return is based on the Change in market cap. and it might not conform with the benchmark return for each sector

Top 10 Stocks by Market Capitalization

	Market Cap. (EGP Mn)	P/E (X)	ROE* (%)
1-Orascom Construction Industries (OCI)	59,382	NM	NM
2-Commercial Int'l Bank (Egypt)	48,687	13.0	25.4%
3-Qatar National Bank AlAhli	17,144	7.4	19.5%
4-T M G Holding	16,405	24.1	2.6%
5-ABU Qir Fertilizers & Chemical ind. Co.	13,713	9.7	42.5%
6-Global Telecom Hldg.	12,537	NM	NM
7-EASTERN CO	11,150	12.3	18.8%
8-Elsweddy Cables	10,389	25.8	7.6%
9-MobiNil	10,200	NM	NM
10-Credit Agricole Egypt	7,026	10.4	23.2%
Subtotal	147,251	15.86	11.7%

*: ROE is based on Net Profit for the Period FY-14 & Shareholders' Equity as of 31-December-14

Today's Top Movers and Most Active Stocks

Best Return Performers	Last Price (EGP)	Daily Return
Golden Pyramids Plaza Co.	1.62	9.5%
Tourah cement Co.	15.49	8.2%
Asec Company for Mining - Ascom	7.00	7.4%
Egyptian Media Production City	2.82	5.6%
Orascom Hotels & Development	9.75	4.8%

Worst Return Performers	Last Price (EGP)	Daily Return
Misr Beni Suef Cement	37.01	(6.5%)
Canal Shipping Agencies Co.	8.62	(4.6%)
Al Ezz Dekheila Steel Co. Alexandria	376.03	(3.1%)
Egyptian Iron & Steel Co.	4.80	(2.8%)
Upper Egypt Contracting	1.09	(2.7%)

Most Active Stocks By Volume	Last Price (EGP)	Volume ('000 Shrs)
Amer Group Holding	1.00	23,980
Global Telecom Hldg. (Orascom Telecom)	2.39	6,892
Palm Hills Developments	2.43	6,382
Egyptian Resorts Co.	1.02	6,162
Citadel Capital	1.84	5,153

Source: KAMCO Research

Market Return, Volatility & Trading Indicators

Market Return	Closing Value	DTD Chg	DTD % Chg	MTD % Chg	YTD-15 % Chg
EGX 30 Index	7,879.82	(32.06)	(0.4%)	(3.8%)	(11.7%)
Market Cap (EGP Mn)	329,835	(1,263)	(0.5%)	(2.8%)	(16.1%)

Benchmark Volatility**	Since Jan-14	Since Jan-13	Since Jan-12	Since Jan-11	Since Jan-10
EGX 30 Index	21%	21%	24%	25%	26%

**: Annualized Standard Deviation of Daily Returns

Trading Indicators	Today's Value	DTD Chg	DTD % Chg	Average Daily YTD-15	YTD-14
Volume (Mn Shares)	74	15.46	26.5%	77	130
Value Traded (EGP Mn)	332	127.0	62.1%	370	561
No. of Trades	9,796	1,115	12.8%	11,588	16,279

Market Breadth	▲ 17	▼ 35	= 8
----------------	------	------	-----

YTD-2015 Top Movers and Most Active Stocks

YTD-15 Best Return Performers	Last Price (EGP)	Volume ('000 Shrs)	YTD-15 Return
Credit Agricole Egypt	24.48	24,304	23.8%
Misr Cement Co.	86.00	8,140	20.4%
Qatar National Bank AlAhli	35.14	2,365	13.4%
Egyptian Int'l Pharmaceutical	88.00	2,732	12.1%
Elsweddy Cables	46.50	24,791	12.0%

YTD-15 Worst Return Performers	Last Price (EGP)	Volume ('000 Shrs)	YTD-15 Return
GB AUTO S.A.E	3.41	32,050	(89.0%)
Orascom Hotels & Development	9.75	16,746	(49.8%)
Palm Hills Developments	2.43	1,014,270	(40.9%)
Asec Company for Mining - Ascom	7.00	4,322	(40.7%)
Egyptian Co. for Mobile Services (MobiNil)	102.00	416	(40.5%)

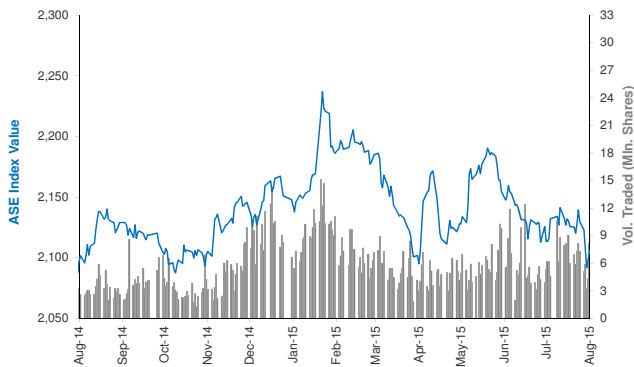
YTD-15 Most Active Stocks by Volume	Last Price (EGP)	Volume ('000 Shrs)	YTD-15 Return
Amer Group Holding	1.00	3,500,124	(21.88%)
Citadel Capital	1.84	1,546,016	(35.89%)
Global Telecom Hldg. (Orascom Telecom)	2.39	1,068,581	(39.80%)
Palm Hills Developments	2.43	1,014,270	(40.88%)
Egyptian Resorts Co.	1.02	966,087	(16.39%)

YTD-15 Return: Is a total return which accounts in addition to the change in price the cash & share dividends announced during the year.

Amman Stock Exchange Daily Report (1st Market)

August 16, 2015

Index Performance relative to Volume



Sectors' Return & Valuation Multiples

	Market Cap. (JD Mn)	MTD % Chg	P/E (X)	P/BV (X)	Yield (%)
Amman Stock Exchange	13,221	(1.1%)	12.2	0.9	5.4%
Banks	9,313	0.0%	8.9	0.8	5.2%
Insurance	96	0.5%	NM	0.8	3.3%
Diversified Financial Services	199	1.9%	NM	0.5	1.1%
Real Estate	287	3.5%	NM	0.8	0.2%
Educational Services	318	0.3%	12.0	2.0	14.7%
Hotels and Tourism	136	0.6%	23.3	0.6	55.4%
Transportation	99	(0.4%)	NM	1.7	2.2%
Technology & Commun.	708	(6.0%)	17.7	2.0	5.9%
Media	13	(3.0%)	NM	0.3	0.0%
Utilities & Energy	609	(2.4%)	14.7	2.4	3.6%
Pharmaceutical & Medical Ind.	106	3.4%	NM	0.7	3.0%
Tobacco & Cigarettes	345	0.9%	13.1	3.4	5.8%
Mining & Extraction Industries	583	(1.1%)	30.7	0.6	0.2%
Engineering & Construction	90	(7.9%)	28.0	1.3	3.8%
Textiles, Leather & Cloth.	79	(1.6%)	19.3	0.9	5.6%

Sectors' MTD Return is based on the Change in market cap. and it might not conform with the benchmark return for each sector

Top 10 Stocks by Market Capitalization

	Market Cap. (JD Mn)	P/E (X)	ROE* (%)
1-ARAB BANK	3,845	6.7	7.4%
2-HOUSING BK TRD FIN	2,344	19.5	12.2%
3-JORDAN TELECOM	693	16.5	11.9%
4-JOR ISLAMIC BANK	548	12.1	16.0%
5-JOR PHOSPHATE MN	439	22.2	2.6%
6-JOR KUWAIT BANK	395	7.9	11.5%
7-BANK OF JORDAN	385	8.2	14.0%
8-CAIRO AMMAN BANK	368	8.3	15.3%
9-JOR PETROLM REF	347	10.7	22.1%
10-EQBAL INV.CO	282	10.7	39.1%

Subtotal	9,644	9.63	8.8%
-----------------	--------------	-------------	-------------

* ROE is based on FY-2014 Net Profit & Shareholders' Equity as of 31-December-14

Today's Top Movers and Most Active Stocks

Best Return Performers	Price (JD)	Daily Return
AL-AMAL FINANCIAL INVESTMENTS CO.	1.59	7.4%
M. E PHARMA. & CHMICAL IND. & MEDICAL APPLIANCE	1.28	4.9%
AD-DULAYL INDUSTRIAL PARK & REAL ESTATE CO.	2.19	4.3%
ITTIHAD SCHOOLS	1.17	3.5%
AL-AMIN FOR INVESTMENT	0.91	3.4%

Worst Return Performers	Price (JD)	Daily Return
MIDDLE EAST SPECIALIZED CABLES CO.	0.17	(5.6%)
READY MIX CONCRETE & CONSTRUCTION SUPPLIES	2.45	(4.3%)
UNITED FINANCIAL INVESTMENTS	0.95	(4.0%)
JORDAN VEGETABLE OIL INDUSTRIES	1.20	(4.0%)
SPECIALIZED INVESTMENT COMPOUNDS	0.50	(3.8%)

Most Active Stocks By Volume	Price (JD)	Volume ('000 Shrs)
AD-DULAYL INDUSTRIAL PARK & REAL ESTATE CO.	2.19	3,016
AL-AMAL FINANCIAL INVESTMENTS CO.	1.59	2,861
SPECIALIZED INVESTMENT COMPOUNDS	0.50	974
AL-TAJAMOAT FOR CATERING AND HOUSING CO.	0.54	155
JORDAN INDUSTRIAL RESOURCES	0.26	136

Source: KAMCO Research

Market Return, Volatility & Trading Indicators

Market Return	Closing Value	DTD Chg	DTD % Chg	MTD % Chg	YTD-15 % Chg
ASE Index	2,106.02	7.76	0.4%	(0.9%)	(2.7%)
Market Cap (JD Mn)	13,220.63	16.49	0.1%	(1.1%)	(4.9%)

Benchmark Volatility**	Since Jan-2014	Since Jan-2013	Since Jan-2012
ASE Index	7.3%	7.8%	7.5%

** Annualized Standard Deviation of Daily Returns

Trading Indicators	Today's Value	DTD Chg	DTD % Chg	Average Daily YTD-15	YTD-14
Volume ('000 Shares)	8,243	3,882	89.0%	6,573	4,970
Value Traded (JD '000)	13,090	5,332	68.7%	7,521	6,327
No. of Trades	2,705	707	35.4%	2,391	2,299

Market Breadth	▲ 24 ▼ 22 = 73
-----------------------	-----------------------

YTD-2015 Top Movers and Most Active Stocks

YTD-15 Best Return Performers	Price (JD)	Volume ('000 Shrs)	YTD-15 Return
JORDAN DAIRY	7.96	94.5	294.1%
AD-DULAYL INDUSTRIAL PARK & REAL ESTATE CO.	2.19	263,822.6	167.1%
REAL ESTATE DEVELOPMENT	0.39	42,403.8	116.7%
AL-AMAL FINANCIAL INVESTMENTS CO.	1.59	57,134.4	82.8%
JORDAN LOAN GUARANTEE CORP.	0.92	5,774.1	73.6%

YTD-15 Worst Return Performers	Price (JD)	Volume ('000 Shrs)	YTD-15 Return
AL-TAJAMOAT FOR CATERING AND HOUSING CO.	0.54	83,196.2	(57.8%)
JORDAN INDUSTRIAL RESOURCES	0.26	74,788.1	(46.9%)
JORDAN PRESS FOUNDATION/AL-RA'I	1.15	339.8	(43.1%)
TRANSPORT& INVESTMENT BARTER CO.	0.44	89,974.8	(39.7%)
JORDAN DUBAI PROPERTIES	0.41	2,874.4	(37.9%)

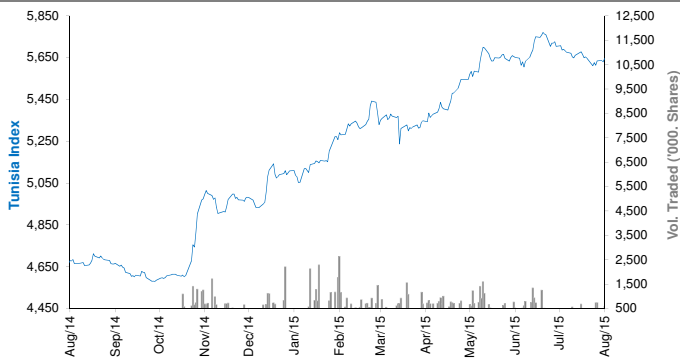
YTD-15 Most Active Stocks by Volume	Price (JD)	Volume ('000 Shrs)	YTD-15 Return
AD-DULAYL INDUSTRIAL PARK & REAL ESTATE CO.	2.19	263,823	167.1%
TRANSPORT& INVESTMENT BARTER CO.	0.44	89,975	(39.7%)
SPECIALIZED INVESTMENT COMPOUNDS	0.50	86,471	(13.8%)
AL-TAJAMOAT FOR CATERING AND HOUSING CO.	0.54	83,196	(57.8%)
JORDAN INDUSTRIAL RESOURCES	0.26	74,788	(46.9%)

YTD-15 Return: Is a total return which accounts in addition to the change in price the cash & share dividends announced during the year.

Tunisia Stock Exchange Daily Report

August 16, 2015

Index Performance relative to Volume



Sectors' Return & Valuation Multiples

	Market Cap. (DT Mn)	MTD % Chg	P/E (X)	P/B (X)	Yield (%)
Tunis Stock Exchange	16,605	(1.2%)	13.66	1.47	2.7%
Banking	6,750	(1.4%)	16.48	1.51	3.2%
Insurance	804	(0.4%)	19.13	1.69	2.1%
Leasing	512	(0.3%)	11.63	1.26	4.2%
Financial Services	1,451	1.3%	16.02	2.21	1.1%
Industrial	1,178	1.8%	2.51	0.38	2.3%
Chemical Industry	596	(4.1%)	15.34	1.78	4.1%
Food & Beverage	3,098	(3.2%)	20.48	4.24	3.0%
Retailing	1,357	(1.8%)	NM	3.71	0.3%
Others	859	1.8%	NM	1.15	3.5%

Sectors' MTD Return is based on the Change in market cap. and it might not conform with the benchmark return for each sector

Top 10 Stocks by Market Capitalization

	Market Cap. (DT Mn)	P/E (X)	ROE* (%)
1-Société Frigorifique et Brasserie de Tunis	2,182	17.02	22.3%
2-Banque de Tunisie	1,564	17.84	14.0%
3-Banque Internationale Arabe de Tunisie	1,384	11.86	17.0%
4-Banque Attijari De Tunisie	994	13.35	17.7%
5-Poulina Group Holding	990	13.67	12.5%
6-Delice Holding	850	32.91	20.2%
7-Amen Bank	660	7.30	13.2%
8-Union Bancaire pour le Commerce et	510	17.55	9.9%
9-Banque Nationale Agricole	467	24.95	3.2%
10-Arab Tunisian Bank	465	8.42	10.6%

Subtotal 10,065 14.41 13.7%

*: ROE is based on Net Profit for the Period FY-14 & Shareholders' Equity as of 31-December-14

Today's Top Movers and Most Active Stocks

Best Return Performers	Price (DT)	Daily Return
Poulina Group Holding	5.50	2.8%
TelNet Holding	4.49	2.5%
Tunisie Leasing	21.14	2.1%
SOTIPAPIER	4.79	1.9%
Société Générale Industrielle de Filtration	3.12	1.6%

Worst Return Performers	Price (DT)	Daily Return
Industries Chimiques du Fluor	26.20	(3.6%)
Banque de l'Habitat	14.00	(3.2%)
Société Immobilière Tuniso-Séoudienne	2.32	(2.9%)
Société Tunisienne d'Equiptement	5.01	(2.9%)
L'Accumulateur Tunisien ASSAD	6.79	(2.9%)

Most Active Stocks By Volume	Price (DT)	Volume (Shares)
Société Moderne de Céramique	2.92	45,850
Union Internationale de Banques	16.20	31,749
TelNet Holding	4.49	30,793
Société Générale Industrielle de Filtration	3.12	28,573
SOTIPAPIER	4.79	16,466

Source: KAMCO Research

Market Return, Volatility & Trading Indicators

Market Return	Closing Value	DTD Chg	DTD % Chg	MTD % Chg	YTD-15 % Chg
Tunisia Index	5,571.05	(20.50)	(0.4%)	(1.1%)	9.5%
Market Cap (DT Mln)	16,605	(48.81)	(0.3%)	(1.2%)	2.5%

Benchmark Volatility	Since Jan-14	Since Jan-13	Since Jan-12
Tunisia Index	6.7%	6.9%	6.9%

Trading Indicators	Today's Value	DTD Chg	DTD % Chg	Average Daily YTD-15	YTD-14
Volume ('000 Shares)	267	43.4	19.4%	635	782
Value Traded ('000 DT)	1,916	365	23.5%	5,752	5,082
No. of Trades	855	78	10%	1,417	1,449

Market Breadth	▲ 11	▼ 24	= 29
----------------	------	------	------

YTD-2015 Top Movers and Most Active Stocks

YTD-15 Best Return Performers	Price (DT)	Volume ('000 Shrs)	YTD-15 Return
Banque Nationale Agricole	14.59	7,368.2	92.0%
Euro-Cycles	26.99	1,343.2	66.4%
Société de Placement et de Dévelop. Ind. et Touristique	14.50	238.9	57.8%
Banque de l'Habitat	14.00	2,347.1	36.6%
Société Tunisienne d'Assurances et de Réassurances	177.50	100.5	22.2%

YTD-15 Worst Return Performers	Price (DT)	Volume ('000 Shrs)	YTD-15 Return
Société Tunisienne d'Equiptement	5.01	0.758	(51.9%)
Société Tunis. d'Entreprises de Télécom.	1.76	732.1	(49.0%)
Société Nouvelle Maison de la Ville de Tunis	13.70	591.6	(37.7%)
Industries Chimiques du Fluor	26.20	10.0	(31.0%)
Electrostar	5.00	2,495.3	(27.4%)

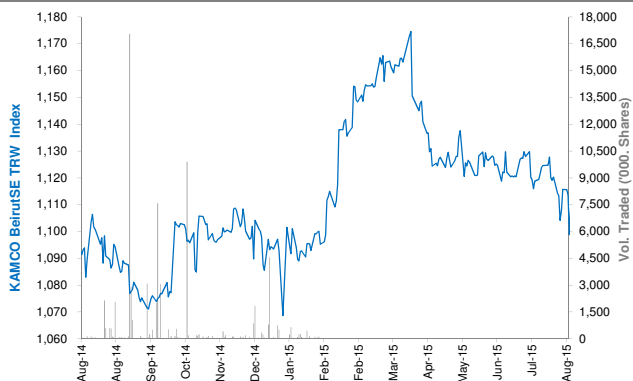
YTD-15 Most Active Stocks by Volume	Price (DT)	Volume ('000 Shrs)	YTD-15 Return
Société Moderne de Céramique	2.92	15,827.8	16.3%
Banque Nationale Agricole	14.59	7,368.2	92.0%
Société Frigorifique et Brasserie de Tunis	24.24	7,360.5	7.7%
Société d'Articles Hygiéniques	10.93	6,786.8	17.4%
TUNISAIR	0.87	4,338.5	(23.0%)

YTD-15 Return: Is a total return which accounts in addition to the change in price the cash & share dividends announced during the year.

Beirut Stock Exchange Daily Report

August 16, 2015

Index Performance relative to Volume



Sectors' Return & Valuation Multiples

	Market Cap. (USD Mn)	MTD % Chg	P/E (X)	P/B (X)	Yield (%)
Beirut Stock Exchange	11,390	(0.4%)	1.22	0.11	2.6%
Banking	9,198	(0.7%)	5.16	0.56	2.9%
Industrial	325	0.4%	6.12	0.89	8.5%
Trading	35	0.0%	0.01	0.00	0.0%
Real Estate & Construction	1,851	0.8%	10.13	1.00	0.0%

Sectors' MTD Return is based on the Change in market cap. and it might not conform with the benchmark return for each sector

Market Breadth

▲	1	▼	2	=	27
---	---	---	---	---	----

Top 10 Stocks by Market Capitalization

	Market Cap. (USD Mn)	P/E (X)	ROE* (%)
1- Bank Audi	2,379	5.99	10.3%
2- BLOM Bank	2,064	5.63	14.4%
3- Solidere A	1,111	6.08	9.8%
4- Byblos Bank	922	5.51	6.7%
5- Solidere B	740	4.05	9.8%
6- BLOM Bank GDR	739	-	-
7- Bank Audi GDR	699	-	-
8- Bank Of Beirut	310	2.86	11.2%
9- Holcim Liban	295	6.18	14.1%
10- Byblos Bank Preferred 2009	204	-	-
Subtotal	9,461	5.11	10.7%

*: ROE is based on Net Profit for the Period FY-14 & Shareholders' Equity as of 31-December-14

Today's Top Movers and Most Active Stocks

Best Return Performers	Price (USD)	Daily Return
Solidere B	11.39	0.9%

Worst Return Performers	Price (USD)	Daily Return
Bank Audi	5.95	(0.8%)
Solidere A	11.11	(0.5%)

Most Active Stocks by Volume	Price (USD)	Volume (Shares)
Bank Audi	5.95	3,000
Solidere A	11.11	2,903
Solidere B	11.39	1,044
Byblos Bank Preferred 2008	101.10	1,000

Source: KAMCO Research

Market Return, Volatility & Trading Indicators

Market Return	Closing Value	DTD Chg	DTD % Chg	MTD % Chg	YTD-15 % Chg
KAMCO BeirutSE TRW Index	1,110.85	(1.90)	(0.2%)	(0.4%)	1.7%
Market Cap (USD Mn)	11,390.000	(19.49)	(0.2%)	(0.4%)	1.5%

Benchmark Volatility	Since Jan-14	Since Jan-13	Since Jan-12
KAMCO BeirutSE TRW Index	7.7%	7.4%	7.1%

Trading Indicators	Today's Value	DTD Chg	DTD % Chg	Average Daily YTD-15	YTD-14
Volume ('000s shares)	7.95	(26)	(76.9%)	331	662
Value Traded ('000s USD)	162.86	(168)	(50.7%)	2,658	2,878

YTD-2015 Top Movers and Most Active Stocks

YTD Best Return Performers	Price (USD)	YTD Volume (Shares)	YTD-15 Return
Ciments Blancs N	3.10	574	12.7%
BLOM Bank	9.60	5,779,527	9.1%
BEMO Bank	1.90	215,084	8.6%
Bank of Beirut Preferred Class J	25.75	48,525	3.0%
BLOM Bank GDR	10.00	809,902	2.0%

YTD Worst Return Performers	Price (USD)	YTD Volume (Shares)	YTD-15 Return
Bank Audi GDR	6.010	7,051,219	(8.2%)
Ciments Blancs B	3.500	12,450	(6.7%)
Bank of Beirut Preferred Class E	25.500	89,831	(2.9%)
Bank of Beirut Preferred Class H	25.600	163,752	(2.5%)
Solidere A	11.11	3,300,138	(1.9%)

YTD Most Active Stocks by Volume	Price (USD)	YTD Volume (Shares)	YTD-15 Return
Bank Audi	5.95	20,997,095	(0.8%)
Byblos Bank	1.63	7,062,374	1.9%
Bank Audi GDR	6.01	7,051,219	(8.2%)
BLOM Bank	9.60	5,779,527	9.1%
Solidere A	11.11	3,300,138	(1.9%)

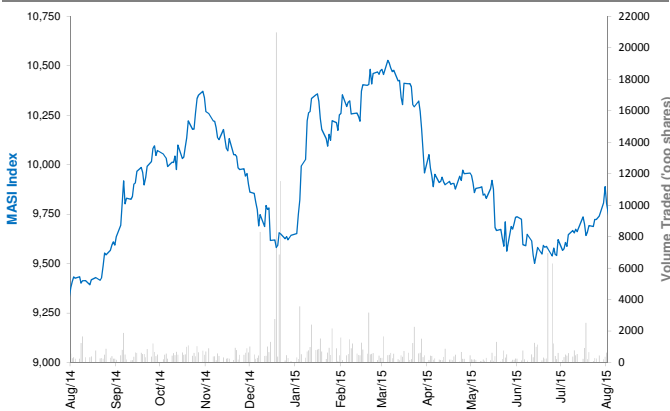
YTD-15 Return: Is a total return which accounts in addition to the change in price the cash & share dividends announced during the year.

Casablanca Stock Exchange Daily Report

(The Bulletin covers the 41 Stocks listed on the Main Market)

August 16, 2015

Index Performance relative to Volume



Market Breadth

▲ 11 ▼ 11 = 19

Top 10 Stocks by Market Capitalization

	Market Cap. (MAD Mn)	P/E (X)	ROE* (%)
1-Itissalat Al-Maghrib	101,228	17.3	36.8%
2-Attijariwafa Bank	70,435	16.2	12.3%
3-Banque Marocaine Du Commerce Exterieur	39,482	20.3	12.1%
4-Banque Centrale Populaire	38,758	17.7	6.9%
5-Ciments Du Maroc	18,752	23.4	12.7%
6-Wafa Assurances	13,475	17.3	19.9%
7-CIE Generale Immobiliere	10,677	NM	1.8%
8-Holcim Maroc	9,683	16.0	30.7%
9-Douja Prom Addoha	9,135	9.0	9.1%
10-Banque Marocaine Due Commerce Et De L'Industries	8,749	24.0	4.3%
Subtotal	320,374	17.82	13.3%

*: ROE is based on Net Profit for the period FY-14 and Shareholders' equity as of 31-December-14

Today's Top Movers and Most Active Stocks

Best Return Performers	Price (MAD)	Daily Return
Med Paper	17.51	6.0%
Fenie Brossette	127.85	4.8%
Alliances Developpement Immobilier	53.00	4.3%
Societe Nationale de Siderurgie	700.00	3.7%
Risma	184.00	0.4%

Worst Return Performers	Price (MAD)	Daily Return
Banque Centrale Populaire	223.85	(2.4%)
Delta Holding	26.99	(2.2%)
Miniere Touissit	1,146.00	(1.7%)
Lafarge Ciments	1,870.00	(1.6%)
Banque Marocaine Du Commerce Exterieur	220.00	(1.1%)

Most Active Stocks By Volume	Price (MAD)	Volume (Shrs)
Itissalat Al-Maghrib	115.15	177,818
Douja Prom Addoha	29.00	81,722
Attijariwafa Bank	350.00	43,526
Banque Marocaine Du Commerce Exterieur	220.00	31,634
Banque Centrale Populaire	223.85	8,350

Source: KAMCO Research

Sectors' Return & Valuation Multiples

	Market Cap. (MAD Mn)	MTD % Chg	P/E (X)	P/B (X)	Yield (%)
Casablanca Stock Exchange	428,682	(0.8%)	21.7	2.0	3.3%
Banking	170,477	(0.2%)	17.8	1.7	2.7%
Beverages	1,782	(2.2%)	17.0	3.2	0.0%
Chemicals	266	(11.7%)	NM	0.6	0.0%
Construction & Bldg. Material	63,833	(1.8%)	22.8	4.1	2.1%
Distributors	9,279	0.1%	24.7	2.4	0.0%
Electrical & Electronic Equipment	319	(14.4%)	NM	0.0	0.0%
Electricity	1,221	(2.2%)	1.5	0.3	0.0%
Food Producers & Processors	3,700	0.2%	4.4	0.7	15.6%
Holding Companies	2,364	(2.9%)	15.2	2.0	4.8%
Insurance	21,423	0.6%	16.5	2.6	5.0%
Investment & other Finance	3,410	(3.6%)	13.7	1.6	3.0%
Leisures & Hotel	1,450	(3.2%)	NM	1.6	0.0%
Materials, Software & Computer	722	(3.2%)	9.9	0.6	3.9%
Mining	14,231	0.3%	23.8	2.5	2.3%
Oil & Gas	8,396	(1.7%)	NM	0.9	0.0%
Real Estate	20,473	0.2%	25.8	1.2	0.0%
Telecommunications	101,228	(1.7%)	17.3	6.4	6.0%
Transport	558	2.2%	14.3	2.0	0.0%
Utilities	3,504	0.0%	12.4	2.0	0.0%
Forestry & Paper	45	9.4%	NM	2.2	0.0%

Sectors' MTD Return is based on the Change in market cap. and it might not conform with the benchmark return for each sector

Market Return, Volatility & Trading Indicators

Market Return	Closing Value	DTD Chg	DTD % Chg	MTD % Chg	YTD-15 % Chg
MASI Index	9,653.11	(42.3)	(0.4%)	(0.9%)	0.3%
MADEX Index	7,911.88	(37.3)	(0.5%)	(0.9%)	0.9%
Market Cap (MAD Mn)	428,682	(2.1)	(0.5%)	(0.8%)	(0.7%)

Benchmark Volatility**	YTD-14	Since Jan-13	Since Jan-12	Since Jan-11	Since Jan-10
MASI Index	7.9%	8.3%	8.7%	9.7%	9.8%
MADEX Index	9.4%	8.3%	8.7%	9.1%	10.1%

**: Annualized Standard Deviation of Daily Returns

Trading Indicators	Today's Value	DTD Chg	DTD % Chg	Average Daily YTD-15	YTD-14
Volume ('000 Shares)	365.64	292.01	396.6%	610	516
Value Traded (MAD Mn)	25.50	14.71	136.3%	47	70

YTD-2015 Top Movers and Most Active Stocks

YTD Best Return Performers	Price (MAD)	Volume (Shrs)	YTD-15 Return
Compagnie de Transport au Maroc	455.00	35,661	40.0%
Ciments Du Maroc	1,299.00	276,852	38.2%
Hightech Payment Systems SA	480.00	28,647	29.0%
TAQA MOROCCO	546.30	591,989	28.5%
Holcim Maroc	2,300.00	153,555	20.8%

YTD Worst Return Performers	Price (MAD)	Volume (Shrs)	YTD-15 Return
Alliances Developpement Immobilier	53.00	2,399,967	(80.9%)
Marocaine de l Industrie du Raffinage	127.80	431,324	(47.0%)
Societe Nationale d'Electrolyse et de Petrochimie	111.00	84,475	(46.4%)
Med Paper	17.51	507,354	(37.1%)
Fenie Brossette	127.85	21,422	(33.8%)

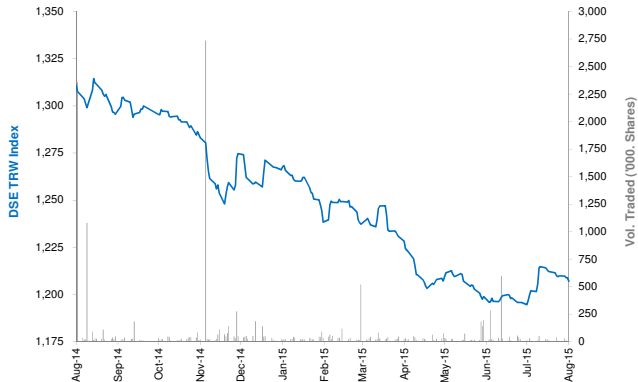
YTD Most Active Stocks by Volume	Price (MAD)	Volume ('000 Shrs)	YTD-15 Return
Douja Prom Addoha	29.00	34,700	(22.9%)
Itissalat Al-Maghrib	115.15	18,314	1.2%
Attijariwafa Bank	350.00	9,176	1.7%
Comp Suc Maroc Et De Raff	173.65	6,973	4.0%
Banque Marocaine Du Commerce Exterieur	220.00	6,420	0.0%

YTD-15 Return: accounts in addition to the chg in price the cash & share dividends announced during the year.

Damascus Securities Exchange Daily Report

August 16, 2015

Index Performance relative to Volume



Sectors' Return & Valuation Multiples

	Market Cap. (SRY Mn)	MTD % Chg	P/E (X)	P/B (X)	Yield (%)
Damascus SE	124,974	(0.4%)	4.9	0.9	0.3%
Banking	111,081	(0.4%)	4.70	0.84	0.0%
Services	1,470	0.0%	26.68	2.67	2.0%
Industrial	3,926	0.0%	6.62	1.58	0.0%
Insurance	7,958	(0.4%)	7.09	0.89	4.7%
Agricultural	539	0.0%	NM	3.81	0.0%

Sectors' MTD Return is based on the Change in market cap. and it might not conform with the benchmark return for each sector

Market Breadth

▲	1	▼	3	=	20
---	---	---	---	---	----

Top 10 Stocks by Market Capitalization

	Market Cap. (SRY Mn)	Trailing P/E (X)	ROE* (%)
1- Banque Bemo Saudi Fransi	16,950	7.3	20.6%
2- Qatar National Bank - Syria	14,550	1.7	23.5%
3- Bank Audi Syria	13,238	4.5	29.1%
4- Bank Of Syria And Overseas	9,400	4.7	25.7%
5- Arab Bank- Syria	9,301	NM	NM
6- The Int'l Bank For Trade & Finance	8,059	NM	0.1%
7- Syria International Islamic Bank	7,815	NM	NM
8- Byblos Bank Syria	7,650	7.0	13.7%
9- Al Baraka Bank - Syria	5,605	2.2	24.0%
10- Cham Bank	4,500	2.1	21.4%
Subtotal	92,567	4.89	17.5%

* ROE is based on FY-2014 Net Profit & Shareholders' Equity as of 31-December-14

Today's Top Movers & Most Active Stocks

Best Return Performers	Price (SRY)	Daily Return
Al Baraka Bank - Syria	112.09	0.03%

Worst Return Performers	Price (SRY)	Daily Return
United Insurance Co.	173.50	(2.0%)
Qatar National Bank Syria	97.00	(0.8%)
Syria International Islamic Bank	91.95	(0.6%)

Most Active Stocks by Volume	Price (SRY)	Volume (Shrs)
Syria International Islamic Bank	91.95	8,321
United Insurance Co.	173.50	5,000
Qatar National Bank Syria	97.00	3,000
Al Baraka Bank - Syria	112.09	2,900
Alahliah Vegetable Oil Company E.S.A	261.75	1,910

Source: KAMCO Research

Market Return, Volatility & Trading Indicators

Market Return	Closing Value	DTD Chg.	DTD % Chg.	MTD % Chg.	YTD-15 % Chg.
DSE Weighted Index	1,207.09	(1.84)	(0.2%)	(0.4%)	(5.0%)
Market Cap (SRY Mn)	124,974	(190)	(0.2%)	(0.4%)	(5.6%)

Benchmark Volatility	Since Jan-14	Since Jan-13	Since Jan-12
DSE Weighted Index	4.7%	9.8%	8.9%

** Annualized Standard Deviation of Daily Returns

Trading Indicators	Today's Value	DTD Chg.	DTD % Chg.	Average Daily YTD-15	YTD-14
Volume (Shrs)	21,131	19,331	1,073.9%	39,444	25,351
Value Traded ('000 SRY)	2,749	2,449	816.2%	5,401	22,009
No. of Trades	10	7.0	233.3%	23	47

YTD-2015 Top Movers & Most Active Stocks

YTD Best Return Performers	Price (SRY)	YTD Vol. (Shrs)	YTD-15 Return
Alahliah Vegetable Oil Company E.S.A	261.75	57,871	19.0%
United Insurance Co.	173.50	40,840	11.9%
Bank Al Sharq	135.00	31,505	3.6%
Bank Of Syria And Overseas	235.00	224,065	2.6%
Arab Bank- Syria	184.18	106,419	1.2%

YTD Worst Return Performers	Price (SRY)	YTD Vol. (Shrs)	YTD-15 Return
Qatar National Bank Syria	97.00	858,561	(19.0%)
National Insurance Company	118.25	170,750	(17.5%)
Syria International Islamic Bank	91.95	1,010,396	(16.2%)
Cham Bank	90.00	245,857	(13.7%)
Al Baraka Bank - Syria	112.09	989,139	(10.9%)

YTD Most Active Stocks by Volume	Price (SRY)	YTD Vol. (Shrs)	YTD-15 Return
Syria International Islamic Bank	91.95	1,010,396	(16.2%)
Al Baraka Bank - Syria	112.09	989,139	(10.9%)
Qatar National Bank Syria	97.00	858,561	(19.0%)
Bank Audi Syria	231.25	574,966	0.0%
Cham Bank	90.00	245,857	(13.7%)

YTD-15 Return: Is a total return which accounts in addition to the change in price the cash & share dividends announced during the year.

Disclaimer & Important Disclosures

KAMCO is authorized and fully regulated by the Capital Markets Authority ("CMA") and partially regulated by the Central Bank of Kuwait ("CBK")

This document is provided for informational purposes only. Nothing contained in this document constitutes investment, an offer to invest, legal, tax or other advice or guidance and should be disregarded when considering or making investment decisions. In preparing this document, KAMCO did not take into account the investment objectives, financial situation and particular needs of any particular person. Accordingly, before acting on this document, investors should independently evaluate the investments and strategies referred to herein and make their own determination of whether it is appropriate in light of their own financial circumstances and objectives. The entire content of this document is subject to copyright with all rights reserved. This research and the information contained herein may not be reproduced, distributed or transmitted in Kuwait or in any other jurisdiction to any other person or incorporated in any way into another document or other material without our prior written consent.

Analyst Certification

Each of the analysts identified in this report certifies, with respect to the sector, companies or securities that the individual analyses, that (1) the views expressed in this report reflect his or her personal views about all of the subject companies and securities and (2) no part of his or her compensation was, is or will be directly or indirectly dependent on the specific recommendations or views expressed in this report.

KAMCO Ratings

KAMCO investment research is based on the analysis of regional and country economics, industries and company fundamentals. KAMCO company research reflects a long-term (12-month) target price for a company or stock. The ratings bands are:

- * **Outperform:** Target Price represents expected returns $\geq 10\%$ in the next 12 months
- * **Neutral:** Target Price represents expected returns between -10% and $+10\%$ in the next 12 months
- * **Underperform:** Target Price represents an expected return of $<-10\%$ in the next 12 months

In certain circumstances, ratings may differ from those implied by a fair value target using the criteria above. KAMCO policy is to maintain up-to-date fair value targets on the companies under its coverage, reflecting any material changes to the analyst's outlook on a company. Share price volatility may cause a stock to move outside the rating range implied by KAMCO's fair value target. Analysts may not necessarily change their ratings if this happens, but are expected to disclose the rationale behind their view to KAMCO clients.

Any terms and conditions proposed by you which are in addition to or which conflict with this Disclaimer are expressly rejected by KAMCO and shall be of no force or effect. The information contained in this document is based on current trade, statistical and other public information we consider reliable. We do not represent or warrant that such information is fair, accurate or complete and it should not be relied upon as such. KAMCO has no obligation to update, modify or amend this document or to otherwise notify a recipient thereof in the event that any opinion, forecast or estimate set forth herein, changes or subsequently becomes inaccurate. The publication is provided for informational uses only and is not intended for trading purposes. The information on publications does not give rise to any legally binding obligation and/or agreement, including without limitation any obligation to update such information. You shall be responsible for conducting your own investigation and analysis of the information contained or referred to in this document and of evaluating the merits and risks involved in the securities forming the subject matter of this or other such document. Moreover, the provision of certain data/information in the publication may be subject to the terms and conditions of other agreements to which KAMCO is a party.

Nothing in this document should be construed as a solicitation or offer, or recommendation, to acquire or dispose of any investment or to engage in any other transaction, or to provide any investment advice or service. This document is directed at Professional Clients and not Retail Clients within the meaning of CMA rules. Any other persons in receipt of this document must not rely upon or otherwise act upon it. Entities and individuals into whose possession this document comes are required to inform themselves about, and observe such restrictions and should not rely upon or otherwise act upon this document where it is unlawful to make to such person such an offer or invitation or recommendation without compliance with any authorization, registration or other legal requirements.

Risk Warnings

Any prices, valuations or forecasts are indicative and are not intended to predict actual results, which may differ substantially from those reflected. The value of an investment may go up as well as down. The value of and income from any investment may fluctuate from day to day as a result of changes in relevant economic markets (including, without limitation, foreseeable or unforeseeable changes in interest rates, foreign exchange rates, default rates, prepayment rates, political or financial conditions, etc.).

Past performance is not indicative of future results. Any opinions, estimates, valuations or projections (target prices and ratings in particular) are inherently imprecise and a matter of judgment. They are statements of opinion and not of fact, based on current expectations, estimates and projections, and rely on beliefs and assumptions. Actual outcomes and returns may differ materially from what is expressed or forecasted. There are no guarantees of future performance. Certain transactions, including those involving futures, options, and other derivatives, give rise to substantial risk and are not suitable for all investors. This document does not propose to identify or to suggest all of the risks (direct or indirect) which may be associated with the investments and strategies referred to herein.

Conflict of Interest

KAMCO and its affiliates provide full investment banking services, and they and their directors, officers and employees, may take positions which conflict with the views expressed in this document. Salespeople, traders, and other professionals of KAMCO may provide oral or written market commentary or trading strategies to our clients and our proprietary trading desks that reflect opinions that are contrary to the opinions expressed in this document. Our asset management area, our proprietary trading desks and investing businesses may make investment decisions that are inconsistent with the recommendations or views expressed in this document. KAMCO may have or seek investment banking or other business relationships for which it will receive compensation from the companies that are the subject of this document. Facts and views presented in this document have not been reviewed by, and may not reflect information known to, professionals in other KAMCO business areas, including investment banking personnel. United Gulf Bank, Bahrain owns majority of KAMCO's shareholding and this ownership may create, or may create the appearance of, conflicts of interest.

No Liability & Warranty

KAMCO makes neither implied nor expressed representations or warranties and, to the fullest extent permitted by applicable law, we hereby expressly disclaim any and all express, implied and statutory representations and warranties of any kind, including, without limitation, any warranty as to accuracy, timeliness, completeness, and fitness for a particular purpose and/or non-infringement. KAMCO will accept no liability in any event including (without limitation) your reliance on the information contained in this document, any negligence for any damages or loss of any kind, including (without limitation) direct, indirect, incidental, special or consequential damages, expenses or losses arising out of, or in connection with your use or inability to use this document, or in connection with any error, omission, defect, computer virus or system failure, or loss of any profit, goodwill or reputation, even if expressly advised of the possibility of such loss or damages, arising out of or in connection with your use of this document. We do not exclude our duties or liabilities under binding applicable law.



KAMCO Investment Company – K.S.C (Public)

Al-Shaheed Tower, Khalid Bin Al-Waleed Street- Sharq

P.O. BOX : 28873, Safat 13149, State of Kuwait

Tel: (+965) 1852626 Fax: (+965) 22492395

Email : Kamcoird@kamconline.com