

MENA Markets Daily Report

August 19, 2015

	Country	Benchmark		Index Value	DTD Change	YTD 2015	FY 2014
MENA Countries							
In this Report...	Kuwait	KSE Price Index	▼	6,194.71	(0.0%)	(5.2%)	(13.4%)
Kuwait 2	Kuwait	KSE Weighted Index	▼	412.41	(0.0%)	(6.0%)	(3.1%)
Saudi Arabia 3	Kuwait	KSE - 15 Index	▲	992.98	0.3%	(6.3%)	(0.8%)
UAE - Dubai 4	Saudi Arabia	TADAWUL All Share Index	▼	8,197.02	(2.8%)	(1.6%)	(2.4%)
UAE - Abu Dhabi 5	UAE - Dubai	DFM General Index	▼	3,827.59	(2.5%)	1.4%	12.0%
Qatar 6	UAE - Abu Dhabi	ADX General Index	▼	4,539.85	(2.0%)	0.2%	5.6%
Bahrain 7	Qatar	QE 20 Index	▼	11,670.50	(0.5%)	(5.0%)	18.4%
Oman 8	Bahrain	Bahrain All Share	▼	1,328.51	(0.2%)	(6.9%)	14.2%
Egypt 9	Oman	MSM 30 Index	▼	6,191.44	(0.5%)	(2.4%)	(7.2%)
Jordan 10	Egypt	EGX 30	▼	7,398.43	(2.6%)	(17.1%)	31.6%
Tunisia 11	Jordan	ASE Index	▲	2,139.80	0.7%	(1.2%)	4.8%
Lebanon 12	Lebanon	KAMCO Beirut SE TRW Index	▼	1,108.25	(0.0%)	1.4%	3.5%
Morocco 13	Tunisia	Tunisia Index	▼	5,517.83	(0.3%)	8.4%	16.2%
Syria 14	Morocco	MASI	▲	9,497.82	0.0%	(1.3%)	5.6%
	Syria	DSE Weighted Index	▼	1,206.89	(0.0%)	(5.1%)	1.7%
Emerging Markets							
	China	SSE Composite Index	▼	3,748.16	(6.1%)	12.3%	52.9%
	Russia	RUSSIAN RTS INDEX (\$)	▼	809.64	(1.9%)	2.4%	(45.2%)
	India	SENSEX	▼	27,831.54	(0.2%)	1.2%	29.9%
	Brazil	BOVESPA Stock Index	▲	47,450.58	0.5%	(5.1%)	(2.9%)
	Mexico	BOLSA Index	▼	43,872.12	(0.2%)	1.7%	1.0%
	Korea	KOSPI Index	▼	1,956.26	(0.6%)	0.7%	(4.8%)
	Taiwan	TAIEX Index	▼	8,177.22	(0.4%)	(14.0%)	8.1%
Global Markets							
	World	MSCI World Index	▼	1,744.20	(0.3%)	2.0%	2.9%
	Asia	MSCI Asia Pacific	▼	136.94	(0.7%)	(0.7%)	(2.5%)
	Europe	DJ Stoxx 600	▲	388.13	0.2%	13.3%	4.4%
	Europe	FTSEurofirst 300	▲	1,535.46	0.2%	12.2%	4.0%
	Emerging Markets	MSCI EM Index	▼	848.12	(0.8%)	(11.3%)	(4.6%)
	U.S.A	S&P 500	▼	2,096.92	(0.3%)	1.8%	11.4%
	U.S.A	DJIA	▼	17,511.34	(0.2%)	(1.7%)	7.5%
	U.S.A	NASDAQ Composite	▼	5,059.35	(0.6%)	6.8%	13.4%
	UK	FTSE 100	▼	6,526.29	(0.4%)	(0.6%)	(2.7%)
	Germany	DAX	▼	10,915.92	(0.2%)	11.3%	2.7%
	Japan	NIKKEI 225	▼	20,554.47	(0.3%)	16.2%	7.1%
	Hong Kong	HANG SENG INDEX	▼	23,474.97	(1.4%)	(1.6%)	1.3%
Commodities							
	Oil	OPEC Crude	▼	45.96	(1.4%)	(11.6%)	(49.6%)
	Oil	Brent	▲	48.81	0.1%	(24.3%)	(45.6%)
	Oil	Kuwait	▼	46.96	(1.3%)	(10.8%)	(51.7%)
	Natural Gas	NYMEX Natural Gas (USD/MMBtu)	▼	2.70	(0.9%)	(10.2%)	(33.8%)
	Gold	Gold Spot \$/Oz	▼	1,116.37	(0.2%)	(5.9%)	(1.4%)

Investment Research Department
Kamcoird@kamconline.com

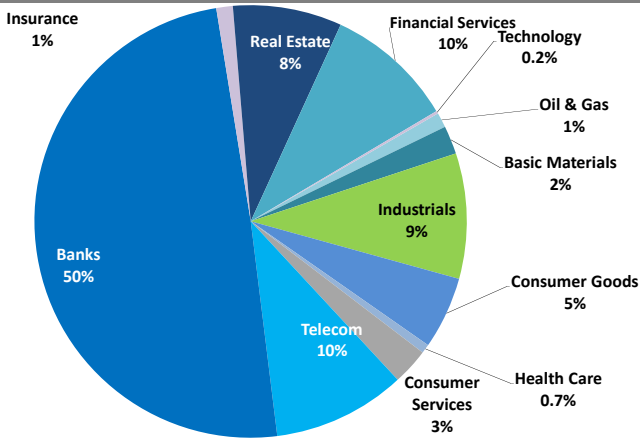
P.O.Box 28873, Safat 13149 Kuwait
Tel: (965) 1852626, Extn: 1153 / 1146
Fax: (965) 22492395

<http://www.kamconline.com>

KAMCO Investment Company - K.S.C
(Public)

Source: Bloomberg & KAMCO Research

Sector Weight by Market Cap



Top 10 Companies by Market Capitalization

Company Name	Market Cap. (Mn KWD)	P/E (X)	ROE* (%)
1- National Bank of Kuwait	4,283.8	15.6	10.5%
2- Kuwait Finance House	2,906.7	22.3	7.7%
3- Zain	1,728.6	9.6	11.8%
4- Ahli United Bank - Bahrain	1,348.9	9.6	14.6%
5- Kuwait Food Co. (Americana)	1,061.3	20.7	13.6%
6- Kuwait Projects Co.	972.6	20.4	10.0%
7- Commercial Bank of Kuwait	875.4	17.5	8.9%
8- Ahli United Bank - Kuwait	866.2	17.2	15.2%
9- Burgan Bank	850.5	13.7	9.9%
10- Boubyan Bank	845.9	28.3	10.2%
Total	15,740	15.49	10.7%

*: ROE is calculated based on TTM 1Q-2015 net profit & shareholders' equity as of 31-March-15

Top Movers and Most Active Stocks

Today's Top % Gainers	Close (KWD)	Change (KWD)	Percent Change
National Petroleum Services Co.	0.650	0.050	8.3%
Livestock Transport & Trading Co.	0.134	0.010	8.1%
Arkan Al-Kuwait Real Estate Co.	0.114	0.008	7.5%
Zima Holding Co.	0.085	0.005	6.3%
Kuwait Financial Center	0.110	0.006	5.8%

Today's Top % Losers	Close (KWD)	Change (KWD)	Percent Change
National Mobile Telecommunication Co.	1.220	(0.100)	(7.6%)
Arabi Holding Group Co.	0.097	(0.007)	(6.7%)
Heavy Engineering Ind. & Shipbuilding Co.	0.140	(0.010)	(6.7%)
Kuwait Building Materials Manufacturing Co.	0.365	(0.025)	(6.4%)
Salbookh Trading Co.	0.087	(0.005)	(5.4%)

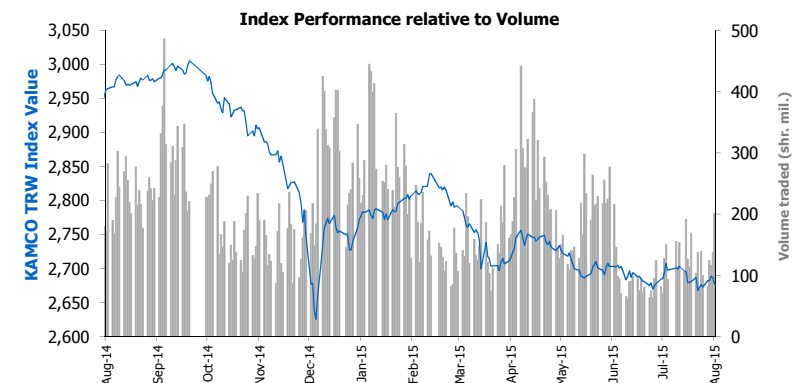
Today's Most Active by Volume	Close (KWD)	Change (KWD)	Volume (Shares)
Al Dar National Real Estate Co.	0.039	0.001	22,567,845
Nafais Holding Co.	0.118	0.004	6,765,035
Al-Mal Investment Co.	0.044	0.001	3,402,831
Hits Telecom Holding Co.	0.032	0.001	2,992,701
Gulf Petroleum Investment Co.	0.050	(0.003)	2,578,124

Source: KAMCO Research

Market Capitalization - Sectors' Return

	Market Cap. (KWD Mn)	DTD %	DTD % Chg	MTD % Chg	YTD % Chg
Kuwaiti Stock Exchange	28,258.0	▼	(0.0%)	(1.4%)	(4.9%)
Oil & Gas	318.7	▲	0.9%	(1.9%)	(18.5%)
Basic Materials	595.5	=	0.0%	(1.3%)	(8.3%)
Industrials	2,651.0	▼	(0.1%)	1.0%	(2.9%)
Consumer Goods	1,528.2	▲	0.2%	(3.2%)	25.5%
Health Care	189.7	▲	0.4%	(0.2%)	3.2%
Consumer Services	770.4	▼	(0.1%)	0.2%	(0.9%)
Telecommunications	2,810.5	▼	(1.9%)	(2.8%)	(16.0%)
Banks	13,964.5	▲	0.3%	(1.1%)	(4.3%)
Insurance	351.5	▲	0.2%	1.3%	(1.5%)
Real Estate	2,302.0	▼	(0.1%)	(2.7%)	(3.8%)
Financial Services	2,721.6	▲	0.6%	(2.0%)	(9.7%)
Technology	54.5	▲	0.3%	(0.3%)	(3.3%)

Market Breadth	▲	36	▼	41	=	115
Benchmark Return	Closing Value	DTD Chg	DTD % Chg	MTD % Chg	YTD % Chg	
KSE Price Index	6,194.71	(1.4)	(0.0%)	(0.9%)	(5.2%)	
KSE Weighted Index	412.41	(0.0)	(0.0%)	(1.6%)	(6.0%)	
Kuwait 15 Index	992.98	3.2	0.3%	(2.2%)	(6.3%)	
Market Cap (KWD Mn)	28,258	(2.3)	(0.0%)	(1.4%)	(4.9%)	



Market Trading Data and Volatility

Trading Indicators	Today's Value	DTD Chg	DTD % Chg	Average Daily YTD 2015	YTD 2014
Volume (Shrs Mn)	79.2	1.5	1.9%	183.5	214.8
Value Traded (KWD Mn)	8.7	0.2	2.5%	17.5	25.2
No. of Trades	2,246	(448.0)	(16.6%)	4,171	4,652

Market Volatility**	Volatility Since January:				
	2015	2014	2013	2012	2011
KSE Price Index	7.3%	9.4%	10.4%	9.8%	9.6%
KSE Weighted Index	8.1%	9.6%	8.9%	8.6%	9.8%

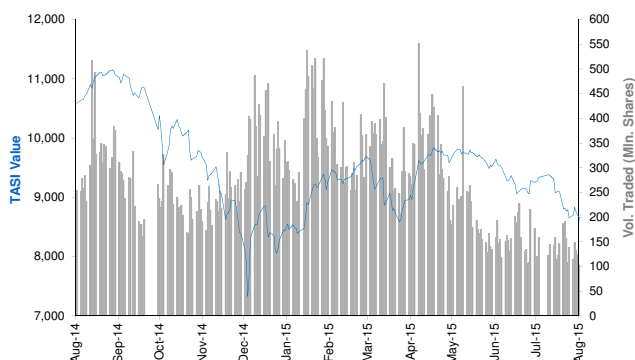
** Annualized Standard Deviation of Daily Returns

Today's Most Active by Value	Close (KWD)	Change (KWD)	Value (KWD)
kuwait Telecommunication Co.	0.880	(0.010)	1,047,020
Al Dar National Real Estate Co.	0.039	0.001	870,155
Nafais Holding Co.	0.118	0.004	796,765
Kuwait Finance House	0.610	0.000	657,564
National Bank of Kuwait	0.850	0.010	480,135

Saudi Tadawul Daily Report

August 19, 2015

Index Performance relative to Volume



Top 10 Stocks by Market Capitalization

	Market Cap. (SAR Mn)	P/E (X)	ROE* (%)
1- Saudi Basic Industries Corp	266,820	12.8	12.6%
2- Saudi Telecom	126,720	11.4	18.4%
3- National Commercial Bank	116,760	13.4	18.3%
4- Al-Rajhi Bank	99,743	15.0	15.8%
5- Saudi Electricity Co.	71,082	27.5	4.5%
6- Kingdom Holding Co.	70,412	79.8	2.9%
7- Jabal Omar Development Company	61,731	NM	0.0%
8- AL-Marai Co.	56,454	33.1	15.4%
9- Samba Financial Group	51,120	10.1	13.0%
10- SABB	47,445	11.0	16.5%

Subtotal 968,286 15.64 12.6%

* ROE is based on TTM 1Q-2015 Net Profit & Shareholders' Equity as of 31-March-15

Today's Top Movers and Most Active Stocks

Best Return Performers	Price (SAR)	Daily Return	Value (SAR 000's)
Banque Saudi Fransi	32.84	0.9%	7,795
Dallah Healthcare Holding Co.	119.00	0.6%	9,086
Arabian Pipe Co.	18.97	0.4%	8,755
Saudi Pharmaceutical Indus Corp	38.65	0.4%	17,600
Mouwasat Medical Services Co.	141.50	0.2%	18,540

Worst Return Performers	Price (SAR)	Daily Return	Value (SAR 000's)
Buruj Cooperative Insurance Co.	22.53	(10.0%)	12,177
ACE Arabia Cooperative Insurance Co.	63.16	(10.0%)	36,719
Takween Advanced Industries	48.00	(10.0%)	117,096
Saudi Fransi Cooperative Ins. Co.	42.55	(9.9%)	12,790
Gulf General Cooperative Insurance Co.	20.98	(9.9%)	10,812

Most Active Stocks By Volume	Price (SAR)	Daily Return	Volume ('000 Shrs)
Alinma Bank	19.38	(2.9%)	36,762
Dar Al Arkan Real Estate Dev. Co.	7.80	(2.6%)	12,808
Emaar The Economic City	11.07	(4.6%)	10,004
Al-Etihad Etisalat Co.	24.85	(5.0%)	8,602
Saudi Kayan	9.32	(3.1%)	7,330

Source: KAMCO Research

Sectors' Return & Valuation Multiples

	Market Cap. (SAR Mn)	MTD Return	P/E (X)	P/BV (X)	Yield (%)
Saudi Stock Exchange	1,837,764	(9.3%)	17.1	1.9	2.6%
Banks & Financial	524,814	(6.8%)	12.5	1.8	2.2%
Petrochemical Industries	420,536	(10.9%)	14.3	1.7	2.9%
Cement	79,038	(9.7%)	12.7	2.5	6.1%
Retail	86,461	(7.2%)	28.7	5.9	1.5%
Energy & Utilities	73,160	(6.7%)	26.7	1.3	4.0%
Agric. & Food Ind.	121,241	(5.3%)	24.1	4.2	2.2%
Telecom	152,759	(10.8%)	21.7	1.8	4.6%
Insurance	44,798	(14.5%)	60.2	2.6	0.4%
Multi-Inv.	76,791	(6.0%)	65.9	2.1	2.7%
Indust. Inv.	64,458	(15.3%)	20.8	1.6	1.7%
Bldg. & Const.	22,872	(15.7%)	40.8	2.1	3.0%
Real Estate Dev.	112,383	(11.5%)	41.4	2.1	0.7%
Transport	29,859	(19.0%)	16.2	2.2	2.1%
Media & Publishing	3,444	(9.8%)	NM	1.5	0.0%
Hotel & Tourism	25,149	(12.2%)	16.9	4.4	1.7%

Sectors' MTD Return is based on the Change in market cap. and it might not conform with the benchmark return for each sector

Market Return, Volatility & Trading Indicators

Market Return	Closing Value	DTD Chg	DTD % Chg	MTD % Chg	YTD-15 % Chg
Tadawul All Share Index	8,197.02	(240.2)	(2.8%)	(9.9%)	(1.6%)
Market Cap (SAR Mn)	1,837,764	(49,821.5)	(2.6%)	(9.3%)	1.2%
Benchmark Volatility**	Since Jan-14	Since Jan-13	Since Jan-12	Since Jan-11	Since Jan-10
Tadawul All Share Index	19.8%	17.0%	15.9%	16.9%	16.6%
** Annualized Standard Deviation of Daily Returns					
Trading Indicators	Today's Value	DTD Chg	DTD % Chg	Average Daily YTD-15	YTD-14
Volume (Mn Shares)	216	50	29.7%	273	280
Value Traded (SAR Mn)	5,430	1,087	25.0%	7,423	8,543
No. of Trades	126,866	30,661	31.9%	131,552	143,407

Market Breadth 5 160 = 4

YTD-2015 Top Movers and Most Active Stocks

YTD-15 Best Return Performers	Price (SAR)	YTD Val (SAR Mn)	YTD Vol ('000 Shrs)	YTD-15 Return
The Co for Cooperative Ins.	95.66	7,530	94,066	92.0%
Saudi Transport & Investment Co.	57.28	10,292	196,173	69.9%
BUPA Arabia for Cooperative Ins.	259.25	3,517	17,379	52.8%
Saudi Company for Hardware	100.68	5,026	38,271	43.2%
Al-Babtain Power & Telecom. Co.	36.49	3,113	74,637	35.1%

YTD-15 Worst Return Performers	Price (SAR)	YTD Val (SAR Mn)	YTD Vol ('000 Shrs)	YTD-15 Return
SALAMA Cooperative Insurance Company	13.58	1,777	72,312	(51.3%)
Middle East Specialised Cables	10.75	11,306	607,221	(51.1%)
Solidarity Saudi Takaful co.	10.67	7,042	368,401	(47.3%)
Alinma Tokio Marine Co.	19.75	2,974	62,739	(46.6%)
Saudi Arabian Cooperative Ins. Co.	18.81	3,859	107,613	(45.7%)

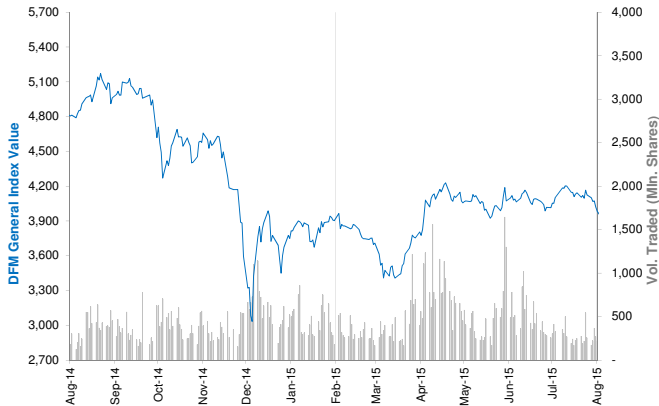
YTD-15 Most Active Stocks by Volume	Price (SAR)	YTD Val (SAR Mn)	YTD Vol ('000 Shrs)	YTD-15 Return
Dar Al Arkan Real Estate Dev. Co.	7.80	59,670	6,359,103	(4.3%)
Alinma Bank	19.38	107,262	4,725,238	(4.4%)
Saudi Kayan	9.32	25,197	2,064,656	(15.1%)
ZAIN KSA	10.33	18,798	1,994,711	(13.3%)
Emaar The Economic City	11.07	18,719	1,274,818	(7.1%)

YTD-15 Return: Is a total return which accounts in addition to the change in price the cash & share dividends announced during the year.

Dubai Financial Market Daily Report

August 19, 2015

Index Performance relative to Volume



Top 10 Stocks by Market Capitalization

	Market Cap (AED Mn)	P/E (X)	ROE* (%)
1- Emirates NBD	53,633	9.3	12.5%
2- EMAAR Properties	50,834	13.2	10.8%
3- EMAAR MALLS GROUP	38,522	21.6	12.6%
4- Dubai Islamic Bank	28,665	10.0	15.7%
5- Emirates Integrated Telecom. (DU)	24,183	11.5	28.4%
6- Mashreq Bank	19,782	8.0	15.4%
7- DAMAC Properties Dubai	18,944	4.2	66.4%
8- Commercial Bank of Dubai	14,798	12.2	16.1%
9- Dubai Financial Market	13,520	22.1	7.8%
10- Arabtec Holding P.J.S.C.	9,054	NM	NM
Subtotal	287,818	11.14	14.2%

* ROE is based on TTM 1Q-2015 Net Profit & Shareholders' Equity as of 31-March-15

Today's Top Movers and Most Active Stocks

Best Return Performers	Price (AED)	Daily Return	Value Traded (AED)
Takaful House	0.594	2.8%	87,904
Dubai National Insurance & Reinsurance	2.850	1.8%	97,248
Emirates Integrated Telecom. (DU)	5.290	0.2%	914,550

Worst Return Performers	Price (AED)	Daily Return	Value Traded (AED)
Agility (PWC Logistics)	12.350	(11.8%)	618
SHUAA Capital	0.540	(5.3%)	444,651
Hits Telecom Holding Co.	0.371	(4.9%)	3,513,923
Arabtec Holding P.J.S.C.	2.060	(4.6%)	72,128,471
Gulf Finance House	0.683	(4.6%)	31,642,836

Most Active Stocks by Volume	Price (AED)	Daily Return	Volume Traded ('000 Shrs)
Gulf Finance House	0.683	(4.6%)	45,583
Arabtec Holding P.J.S.C.	2.060	(4.6%)	33,875
Gulf Navigation Holding	0.426	(0.9%)	29,498
Union Properties	1.040	(2.8%)	25,734
Drake and Scull International	0.685	(3.5%)	16,299

Source: KAMCO Research

Sectors' Return & Valuation Multiples

	Market Cap. (AED Mn)	MTD % Chg	P/E (X)	P/BV (X)	Yield (%)
Dubai Financial Market	360,814	(6.6%)	11.9	1.4	2.4%
Banking	133,738	(4.8%)	10.2	1.3	3.2%
Consumer Staples	10,389	(8.4%)	NM	1.3	0.7%
Investment & Financial	27,508	(11.4%)	12.7	1.2	3.7%
Insurance	5,939	(3.8%)	7.6	0.6	6.2%
Industrial	4,575	3.1%	36.3	0.6	2.0%
Real Estate & Construction	125,855	(7.8%)	NM	1.7	0.9%
Telecommunication	24,450	(1.7%)	11.6	2.9	3.7%
Transportation	25,588	(9.3%)	28.2	1.3	2.4%
Services	2,771	(11.0%)	2.7	0.4	1.3%

Sectors' MTD Return is based on the Change in market cap. and it might not conform with the benchmark return for each sector

Market Breadth	▲	3	▼	29	=	28
----------------	---	---	---	----	---	----

Market Return, Volatility & Trading Indicators

Market Return	Closing Value	DTD Chg	DTD % Chg	MTD % Chg	YTD-15 % Chg
DFM General Index	3,827.59	(99.3)	(2.5%)	(7.6%)	1.4%
Market Cap (AED Mn)	360,814	(9,895)	(2.7%)	(6.6%)	7.7%

Benchmark Volatility**	Volatility Since:				
	Jan-2014	Jan-2013	Jan-2012	Jan-2011	Jan-2010
DFM General Index	32.9%	29.9%	26.9%	25.2%	24.5%

** Annualized Standard Deviation of Daily Returns

Trading Indicators	Today's Value	DTD Chg	DTD % Chg	Average Daily YTD-15	YTD-14
Volume (Mn Shares)	300	100.8	50.7%	466	762
Value Traded (AED Mn)	500	97.0	24.1%	738	1,764
No. of Trades	5,901	1,019	20.9%	7,120	10,734

YTD-2015 Top Movers and Most Active Stocks

YTD-15 Best Return Performers	Price (AED)	Value Traded (AED '000)	Volume ('000 Shrs)	YTD-15 Return
Takaful Emarat	1.750	187,066	142,788	118.8%
Amlak Finance	2.090	11,369,179	5,093,335	104.9%
Al-Madina for Finance & Investment	0.706	222,613	410,950	95.6%
Dubai Parks And Resorts	1.140	4,819,236	4,789,574	56.2%
United Kaipara Dairies Co.	7.910	12	1	52.1%

YTD-15 Worst Return Performers	Price (AED)	Value Traded (AED '000)	Volume ('000 Shrs)	YTD-15 Return
Gulf Navigation Holding	0.426	649,359	1,750,724	(208.7%)
Int'l Financial Advisors Co.	0.524	3,293	6,483	(38.4%)
Ajman Bank	1.850	284,990	126,160	(30.6%)
Arabtec Holding P.J.S.C.	2.060	15,561,612	5,588,746	(29.7%)
National Cement Co.	3.390	53,622	13,022	(24.7%)

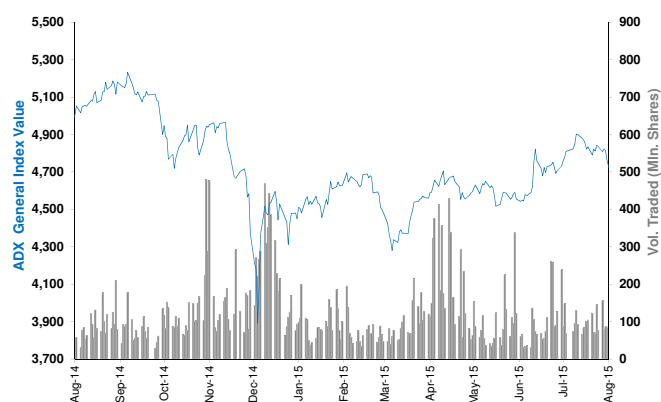
YTD-15 Most Active Stocks by Volume	Price (AED)	Value Traded (AED '000)	Volume ('000 Shrs)	YTD-15 Return
Gulf Finance House	0.683	10,012,374	19,699,242	(8.6%)
Union Properties	1.040	8,823,441	7,149,491	(9.8%)
Arabtec Holding P.J.S.C.	2.060	15,561,612	5,588,746	(29.7%)
Amlak Finance	2.090	11,369,179	5,093,335	104.9%
Deyaar Development	0.731	4,091,530	4,973,386	(14.0%)

YTD-15 Return: Is a total return which accounts in addition to the change in price the cash & share dividends announced during the year.

Abu Dhabi Securities Exchange Daily Report

August 19, 2015

Index Performance relative to Volume



Top 10 Stocks by Market Capitalization

	Market Cap. (AED Mn)	P/E (X)	ROE* (%)
1- Emirates Telecom. Co.	116,971	12.9	22.5%
2- First Gulf Bank	63,675	11.1	18.2%
3- National Bank Of Abu Dhabi	46,177	8.3	14.9%
4- Abu Dhabi Commercial Bank	45,772	10.5	17.1%
5- AL DAR Properties Co.	18,399	7.7	13.3%
6- Union National Bank	17,086	8.1	12.6%
7- Abu Dhabi Islamic Bank	14,821	8.3	12.7%
8- National Bank of Ras Al-Khaimah	11,901	8.0	19.8%
9- United Arab Bank	6,417	10.6	20.6%
10- National Bank of Fujairah	5,126	9.5	13.8%
Subtotal	346,345	10.29	17.0%

* ROE is based on TTM 1Q-2015 Net Profit & Shareholders' Equity as of 31-March-15

Today's Top Movers and Most Active Stocks

Best Return Performers	Price (AED)	Daily Return	Value (AED)
Abu Dhabi Ship Building Co.	3.98	4.7%	352,931

Worst Return Performers	Price (AED)	Daily Return	Value (AED)
Abu Dhabi National Insurance Co.	4.32	(10.0%)	233,280
Eshraq Properties Co.	0.67	(6.9%)	13,827,115
Union National Bank	6.21	(5.2%)	20,368,616
Sharjah Cement & Industrial Dev. Co.	1.00	(4.8%)	230,155
National Bank Of Abu Dhabi	9.75	(4.4%)	8,557,847

Most Active Stocks by Volume	Price (AED)	Daily Return	Volume ('000 Shrs)
Dana Gas	0.54	(1.8%)	38,297
AL DAR Properties Co.	2.34	(3.7%)	35,864
Eshraq Properties Co.	0.67	(6.9%)	19,956
Methaq Takaful Insurance Co.	1.07	(2.7%)	9,759
Waha Capital Co.	2.32	(1.7%)	5,249

Source: KAMCO Research

Sectors' Return & Valuation Multiples

	Market Cap. (AED Mn)	MTD % Chg	P/E (X)	P/BV (X)	Dividend Yield (%)
ADX	446,388	(5.4%)	8.3	1.4	4.2%
Banks	230,511	(6.3%)	9.7	1.5	4.7%
Inv. & Financial Services	4,679	(6.2%)	0.3	1.3	12.2%
Real Estate	21,176	(12.9%)	10.9	0.9	0.8%
Energy	7,610	(3.2%)	NM	0.5	3.8%
Consumer Staples	6,035	0.2%	18.7	2.0	1.4%
Industrial	12,605	2.0%	24.5	0.8	4.5%
Insurance	8,510	(5.0%)	NM	0.5	4.5%
Telecommunication	144,829	(4.1%)	13.2	2.3	3.8%
Services	10,432	1.8%	14.1	0.7	3.4%

Sectors' MTD Return is based on the Change in market cap. and it might not conform with the benchmark return for each sector

Market Breadth	▲	1	▼	29	=	35
----------------	---	---	---	----	---	----

Market Return, Volatility & Trading Indicators

Market Return	Closing Value	DTD Chg	DTD % Chg	MTD % Chg	YTD-15 % Chg
ADX General Index	4,539.85	(91.46)	(2.0%)	(6.1%)	0.2%
Market Cap (AED Mn)	446,388	(8,054)	(1.8%)	(5.4%)	(3.8%)

Benchmark Volatility**	Volatility Since:				
	Jan-2014	Jan-2013	Jan-2012	Jan-2011	Jan-2010
ADX General Index	19.2%	15.9%	13.5%	12.7%	12.1%

** Annualized Standard Deviation of Daily Returns

Trading Indicators	Today's Value	DTD Chg	DTD % Chg	Average Daily YTD-15	YTD-14
Volume (Mn Shares)	135	78.9	140.6%	108	280.4
Value Traded (AED Mn)	288	141.5	96.4%	225	719.2
No. of Trades	2,421	976	67.5%	1,798	3,955

YTD-2015 Top Movers and Most Active Stocks

YTD-15 Best Return Performers	Price (AED)	YTD-Val ('000 AED)	Volume ('000 Shrs)	YTD-15 Return
Abu Dhabi Ship Building Co.	3.98	37,632	15,081	109.5%
Methaq Takaful Insurance Co.	1.07	437,290	445,748	46.6%
Fujairah Building Industrial Co.	1.90	674	476	40.9%
Gulf Medical Projects	2.80	1,186	458	40.0%
Emirates Telecom. Co.	13.45	3,933,745	321,367	35.1%

YTD-15 Worst Return Performers	Price (AED)	YTD-Val ('000 AED)	Volume ('000 Shrs)	YTD-15 Return
Ooredoo	84.65	3,905	37	(41.0%)
Al Dhafra Insurance Co.	4.80	351	61	(37.7%)
National Bank Of Abu Dhabi	9.75	1,034,965	88,260	(30.4%)
Abu Dhabi National Hotels	2.85	39,024	13,746	(28.8%)
Abu Dhabi National Insurance Co.	4.32	2,397	423	(28.6%)

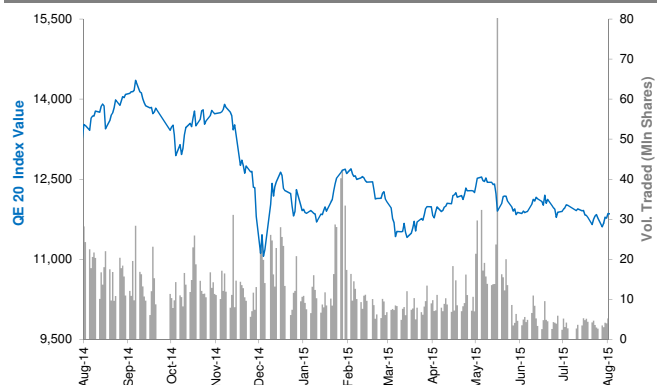
YTD-15 Most Active Stocks by Volume	Price (AED)	YTD-Val ('000 AED)	Volume ('000 Shrs)	YTD-15 Return
Eshraq Properties Co.	0.67	5,224,909	6,080,910	(7.0%)
Dana Gas	0.54	1,741,058	3,328,211	8.0%
AL DAR Properties Co.	2.34	7,742,507	2,930,205	(11.7%)
Ras Al Khaimah Properties	0.61	1,146,812	1,594,920	(17.6%)
Waha Capital Co.	2.32	1,587,663	562,797	(17.7%)

YTD-15 Return: Is a total return which accounts in addition to the change in price the cash & share dividends announced during the year.

Qatar Exchange Daily Report

August 19, 2015

Index Performance relative to Volume



Sectors' Return & Valuation Multiples

	Market Cap. (QAR Mn)	MTD % Chg	P/E (X)	P/B (X)	Yield (%)
Qatar Exchange	615,331	(1.7%)	13.6	2.1	4.2%
Banking & Finance	247,424	(1.2%)	12.5	2.1	4.5%
Goods & Consumer Services	27,835	(4.1%)	14.8	2.4	4.5%
Industrial	173,211	(2.4%)	17.6	3.1	4.3%
Insurance	25,433	(0.1%)	13.6	1.9	2.9%
Real Estate	77,926	1.4%	9.9	1.3	3.1%
Telecom	36,544	(6.6%)	19.8	1.4	4.0%
Transport	26,956	(1.1%)	12.7	1.6	5.1%

Sectors' MTD Return is based on the Change in market cap. and it might not conform with the benchmark return for each sector

Market Breadth

▲ 9 ▼ 25 = 9

Market Return, Volatility & Trading Indicators

Market Return	Closing Value	DTD Chg	DTD % Chg	MTD % Chg	YTD-15 % Chg
QE 20 Index	11,670.50	(64.19)	(0.5%)	(1.0%)	(5.0%)
Market Cap (QAR Mn)	615,331	(3,596)	(0.6%)	(1.7%)	(9.1%)

Benchmark Volatility**	QE 20 Volatility Since:				
	Jan-2014	Jan-2013	Jan-2012	Jan-2011	Jan-2010
QE 20 Index	17.2%	16.2%	14.1%	14.2%	14.3%

** Annualized Standard Deviation of Daily Returns

Trading Indicators	Today's Value	DTD Chg	DTD % Chg	Average Daily YTD-15	YTD-14
Volume ('000 Shares)	4,159	649	18.5%	10,202	19,592
Value Traded (QAR Mn)	190	21	12.1%	420	833
No. of Trades	3,321	671	25.3%	5,145	8,974

Top 10 Stocks by Market Capitalization

	Market Cap. (QAR Mn)	P/E (X)	ROE* (%)
1- Qatar National Bank	123,922	11.6	20.0%
2- Industries Qatar	80,223	14.1	18.8%
3- Ezdan Holding Group Co.	48,275	33.9	4.8%
4- Masraf Al Rayan	32,850	15.8	19.7%
5- Mesaieed Petrochemical Holding Co.	28,581	19.7	10.9%
6- Qatar Islamic Bank	26,205	15.7	14.0%
7- Ooredoo (formerly Q-Tel)	24,024	13.7	8.3%
8- Qatar Electricity & Water Co.	23,694	15.0	25.4%
9- Commercial Bank of Qatar	19,108	10.6	12.6%
10- Barwa Real Estate Co.	18,873	3.3	32.1%

Subtotal	425,755	11.13	18.9%
-----------------	----------------	--------------	--------------

* ROE is based on TTM 1Q-2015 Net Profit & Shareholders' Equity as of 31-March-15

Today's Top Movers and Most Active Stocks

Best Return Performers	Price (QAR)	Daily Return	Value (QAR)
Gulf Warehousing Co.	73.90	1.2%	1,229,735
Barwa Real Estate Co.	48.50	1.1%	16,523,974
Al Ahli Bank of Qatar	51.90	0.8%	15,570
Qatar International Islamic Bank	78.50	0.6%	289,133
Qatar Islamic Bank	110.90	0.4%	21,674,962

Worst Return Performers	Price (QAR)	Daily Return	Value (QAR)
Ooredoo	75.00	(3.4%)	7,850,639
Qatar Oman Investment Co.	15.15	(2.9%)	1,873,954
Qatar National Cement	116.50	(2.1%)	917,826
Vodafone Qatar	14.81	(1.7%)	8,124,002
Qatar Insurance Co.	99.00	(1.6%)	2,619,967

Most Active Stocks by Volume	Price (QAR)	Daily Return	Volume (Shares)
Ezdan Holding Group Co.	18.20	0.2%	748,200
Vodafone Qatar	14.81	(1.7%)	542,765
The Commercial Bank of Qatar	58.50	(1.0%)	512,390
Masraf Al Rayan	43.80	(1.4%)	412,835
Barwa Real Estate Co.	48.50	1.1%	343,698

Source: KAMCO Research

YTD-2015 Top Movers and Most Active Stocks

YTD-15 Best Return Performers	Price (QAR)	YTD Value (QAR 000's)	YTD Volume (Shares 000's)	YTD-15 Return
Qatari German Co. for Medical Devices	15.15	719,233	46,575	49.3%
Medicare Group	170.00	788,510	5,095	45.3%
Al Meera Consumer Goods Co.	265.50	778,980	3,387	32.8%
Gulf Warehousing Co.	73.90	454,977	6,889	31.0%
Doha Insurance Co.	25.10	75,965	2,878	28.5%

YTD-15 Worst Return Performers	Price (QAR)	YTD Value (QAR 000's)	YTD Volume (Shares 000's)	YTD-15 Return
Ooredoo	75.00	1,320,551	13,248	(39.5%)
Diala Brokerage & Inv. Hldg. Co.	22.20	585,212	15,043	(33.6%)
Gulf International Services	66.00	5,351,206	60,325	(32.0%)
Mesaieed Petrochemical Holding Co.	22.75	861,662	32,195	(22.9%)
Industries Qatar	132.60	4,510,109.1	31,049.60	(21.1%)

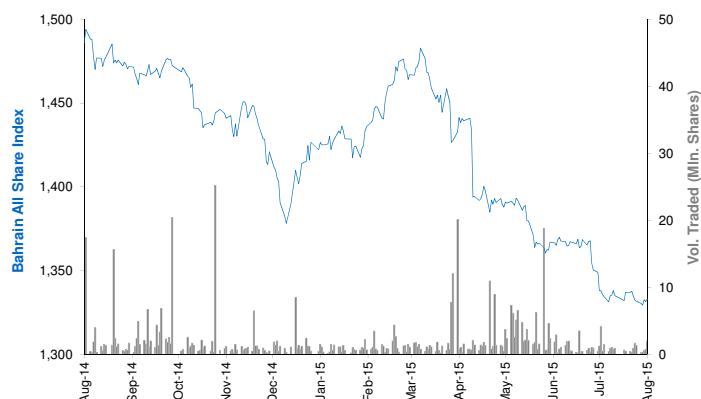
YTD-15 Most Active Stocks by Vol.	Price (QAR)	YTD Value (QAR 000's)	YTD Volume (Shares 000's)	YTD-15 Return
Ezdan Holding Group Co.	18.20	6,204,672	342,813	22.0%
Vodafone Qatar	14.81	3,544,848	204,929	(10.0%)
Barwa Real Estate Co.	48.50	8,099,629	169,265	15.8%
Mazaya Qatar R.E Development Co.	17.50	1,631,610	83,759	(4.0%)
Masraf Al Rayan	43.80	3,853,262	83,208	(0.9%)

YTD-15 Return: Is a total return which accounts in addition to the change in price the cash & share dividends announced during the year.

Bahrain Bourse Daily Report

August 19, 2015

Index Performance relative to Volume



Sectors' Return & Valuation Multiples

	Market Cap. (BHD Mn)	MTD % Chg	P/E (X)	P/B (X)	Yield (%)
Bahrain Bourse	7,823	(0.1%)	9.7	1.0	3.6%
Commercial Banks	3,431	(0.7%)	10.5	1.4	3.6%
Investment	2,240	0.9%	9.3	0.7	3.8%
Insurance	157	0.3%	12.1	0.8	4.4%
Service	1,076	0.8%	11.3	1.1	2.2%
Hotel & Tourism	207	0.0%	11.7	1.0	1.5%
Industrial	713	(2.0%)	6.1	0.7	5.5%

Sectors' MTD Return is based on the Change in market cap. and it might not conform with the benchmark return for each sector

Market Breadth

▲	1	▼	4	=	35
---	---	---	---	---	----

Top 10 Stocks by Market Capitalization

	Market Cap. (BHD Mn)	P/E (X)	ROE* (%)
1- Ahli United Bank (Price in USD)	1,708	8.91	15.8%
2- National Bank of Bahrain	766	14.23	14.7%
3- Arab Banking Corp. (Price in USD)	733	6.50	7.9%
4- Aluminum Bahrain	693	5.95	12.5%
5- Bahrain Telecommunications Co.	556	12.43	8.7%
6- Bank of Bahrain and Kuwait	465	9.13	14.7%
7- United Gulf Bank	325	NM	2.6%
8- Al Salam Bank	289	18.86	4.9%
9- Al Baraka Banking (Price in USD)	284	4.86	12.2%
10- Gulf Finance House (Price in USD)	256	52.48	1.8%
Subtotal	6,075	9.30	10.9%

* ROE is based on TTM 1Q2015 Net Profit & Shareholders' Equity as of 31-March-15

Today's Top Movers and Most Active Stocks

Best Return Performers	Price (BHD)	Daily Return	Value (BHD)
Bahrain Islamic Bank	0.137	1.5%	5,343

Worst Return Performers	Price (BHD)	Daily Return	Value (BHD)
Bahrain Toursim Co.	0.250	(5.3%)	8,388
Al Salam Bank	0.135	(2.2%)	4,118
Esterad Investment Co.	0.202	(1.0%)	3,371
Ahli United Bank (USD)	0.705	(0.7%)	62,459

Most Active Stocks by Volume	Price (BHD)	Daily Return	Volume (Shares)
AlKhaleeji Commercial Bank	0.064	0.0%	282,091
Ahli United Bank (USD)	0.705	(0.7%)	235,000
Bahrain Islamic Bank	0.137	1.5%	39,000
Bahrain Toursim Co.	0.250	(5.3%)	34,000
Al Salam Bank	0.135	(2.2%)	30,504

Source: KAMCO Research

Market Return, Volatility & Trading Indicators

Market Return	Closing Value	DTD Chg	DTD % Chg	MTD % Chg	YTD-15 % Chg
Bahrain All Share Index	1,328.51	(3.05)	(0.2%)	(0.2%)	(6.9%)
Market Cap (BHD Mln)	7,823.41	(12.19)	(0.2%)	(0.1%)	(3.3%)

Benchmark Volatility**

	Jan-2014	Jan-2013	Jan-2012	Jan-2011	Jan-2010
Bahrain All Share Index	7.09%	6.9%	6.8%	7.3%	7.8%

** Annualized Standard Deviation of Daily Returns

Trading Indicators	Today's Value	DTD Chg	DTD % Chg	Average Daily YTD-15	YTD-14
Volume ('000 Shares)	744	536	258.2%	1,785	5,831
Value Traded (BHD '000)	232	193	490.1%	397	1,362
No. of Trades	44	26	144.4%	47	79

YTD-2015 Top Movers and Most Active Stocks

YTD-15 Best Return Performers	Price (BHD)	YTD-Val (BHD '000)	YTD Vol (Shares)	YTD-15 Return
AlKhaleeji Commercial Bank	0.064	4,400	74,281,998	48.8%
BANADER Co. For Hotels	0.077	28	407,475	37.5%
Al Salam Bank	0.135	3,437	25,956,529	34.0%
Gulf Finance House (USD)	0.215	117	1,302,389	25.4%
Al-Ahlia Insurance Co.	0.330	977	2,965,587	22.2%

YTD-15 Worst Return Performers	Price (BHD)	YTD-Val (BHD '000)	YTD Vol (Shares)	YTD-15 Return
Takaful International Co.	0.100	2,502	26,054,619	(31.0%)
United Gulf Investment Corporation	0.100	10.0	99,114	(24.8%)
Bank of Bahrain and Kuwait	0.430	8,223	18,694,479	(16.8%)
Al Baraka Banking Group (USD)	0.675	968	3,593,853	(14.5%)
Inovest BSC. (USD)	0.180	110	1,604,115	(14.3%)

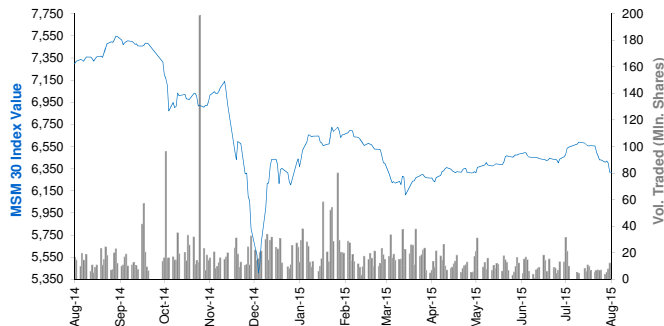
YTD-15 Most Active Stocks by Volume	Price (BHD)	YTD-Val (BHD '000)	YTD Vol (Shares)	YTD-15 Return
AlKhaleeji Commercial Bank	0.064	4,400	74,281,998	48.8%
Ahli United Bank (USD)	0.705	18,360	63,493,572	(5.0%)
Takaful International Co.	0.100	2,502	26,054,619	(31.0%)
Al Salam Bank	0.135	3,437	25,956,529	34.0%
Bank of Bahrain and Kuwait	0.430	8,223	18,694,479	(16.8%)

YTD-15 Return: Is a total return which accounts in addition to the change in price the cash & share dividends announced during the year.

Muscat Securities Market Daily Report

August 19, 2015

Index Performance relative to Volume



Sectors' Return & Valuation Multiples

	Market Cap. (OMR Mn)	MTD % Chg	P/E (X)	P/B (X)	Yield (%)
Muscat Securities Mkt	7,919	(4.5%)	10.38	1.46	4.0%
Financial	3,469	(6.1%)	8.50	1.03	3.7%
Industrial	1,058	(4.8%)	11.86	1.67	4.9%
Services	3,392	(2.7%)	12.77	2.40	3.9%

Sectors' MTD Return is based on the Change in market cap. and it might not conform with the benchmark return for each sector

Market Breadth	▲	6	▼	14	=	40
----------------	---	---	---	----	---	----

Top 10 Stocks by Market Capitalization

	Market Cap. (OMR Mn)	P/E (X)	ROE* (%)
1- Oman Telecom Co.	1,286	10.49	22.3%
2- Bank Muscat	1,178	7.06	13.2%
3- Ooredoo	495	12.45	21.5%
4- National Bank of Oman	442	8.41	14.9%
5- Bank Dhofar	408	9.71	12.7%
6- Ahli Bank	292	11.38	15.5%
7- Raysut Cement	276	10.94	19.0%
8- HSBC Bank Oman	258	20.01	4.3%
9- Sembcorp Salalah	247	34.49	9.6%
10- Bank Sohar	226	7.91	14.7%

Subtotal	5,310	9.92	15.0%
----------	-------	------	-------

* ROE is based on TTM 1Q2015 Net Profit & Shareholders' Equity as of 31-March-15

Today's Top Movers and Most Active Stocks

Best Return Performers	Price (OMR)	Daily Return	Value (OMR)
United Power	2.610	9.9%	6,890
ONIC. Holding	0.480	2.1%	172,850
Oman Investment & Finance Co.	0.196	1.6%	48,270
Galfar Engineering	0.105	1.0%	57,190
Oman & Emirates Investment	0.112	0.9%	62,010

Worst Return Performers	Price (OMR)	Daily Return	Value (OMR)
Renaissance Services	0.206	(6.4%)	37,970
Voltamp Energy	0.422	(4.1%)	3,010
Al Jazeera Steel Products Co.	0.220	(2.2%)	7,040
Bank Dhofar	0.264	(2.2%)	60,720
Al Batinah Dev. Inv. Holding	0.107	(1.8%)	14,430

Most Active Stocks by Volume	Price (OMR)	Daily Return	Volume (Shares)
Al Anwar Holding	0.205	0.5%	2,550,241
Bank Muscat	0.514	0.0%	1,185,518
National Bank of Oman	0.330	0.0%	659,722
Ooredoo	0.760	0.0%	574,113
Oman & Emirates Investment	0.112	0.9%	555,000

Source: KAMCO Research

Market Return, Volatility & Trading Indicators

Market Return	Closing Value	DTD Chg	DTD % Chg	MTD % Chg	YTD-15 % Chg
MSM 30 Index	6,191.44	(28.33)	(0.5%)	(5.6%)	(2.4%)
Market Cap (OMR Mn)	7,918.84	(18.12)	(0.2%)	(4.5%)	2.4%

Benchmark Volatility**	Volatility Since:				
	Jan-2014	Jan-2013	Jan-2012	Jan-2011	Jan-2010
MSM 30 Index	13.6%	11.9%	10.9%	11.2%	10.8%

** Annualized Standard Deviation of Daily Returns

Trading Indicators	Today's Value	DTD Chg	DTD % Chg	Average Daily YTD-15	YTD-14
--------------------	------------------	------------	--------------	-------------------------	--------

Volume ('000 Shares)	9,719	2,273	30.5%	15,178	21,887
Value Traded (OMR '000)	3,315	413	14.2%	4,599	8,339
No. of Trades	722	75	11.6%	850	1,288

YTD-2015 Top Movers and Most Active Stocks

YTD-15 Best Return Performers	Price (OMR)	YTD-Value (OMR 000's)	YTD Vol. (Shares 000's)	YTD-15 Return
United Power	2.610	360	198	97.0%
Gulf International Chemicals	0.259	11,048	46,432	70.4%
ONIC. Holding	0.480	8,055	19,435	51.9%
Al Suwadi Power	2.230	3,382	16,630	28.7%
Al Batinah power	0.219	2,973	14,563	28.1%

YTD-15 Worst Return Performers	Price (OMR)	YTD-Value (OMR 000's)	YTD Volume (Shares 000's)	YTD-15 Return
Renaissance Services	0.206	14,191	35,806	(56.5%)
Port Services Corporation	0.177	490	1,818	(50.0%)
Galfar Engineering	0.105	15,593	105,215	(34.8%)
Al Jazeera Steel Products Co.	0.220	3,154	10,868	(34.5%)
National Gas Co.	0.105	3,088	7,032	(32.2%)

YTD-15 Most Active Stocks by Volume	Price (OMR)	YTD-Value (OMR 000's)	YTD Volume (Shares 000's)	YTD-15 Return
Al Anwar Holding	0.205	128,454	509,573	23.4%
Gulf Investment Services	0.117	32,195	199,861	(17.6%)
Bank Muscat	0.514	110,543	198,566	(7.3%)
Oman & Emirates Investment	0.112	24,814	197,143	(8.9%)
Global Financial Investment Co.	0.119	17,581	150,936	(2.5%)

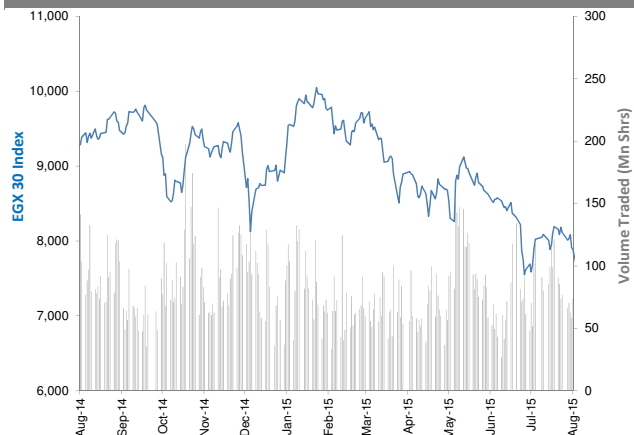
YTD-15 Return: Is a total return which accounts in addition to the change in price the cash & share dividends announced during the year.

The Egyptian Exchange Daily Report

(The bulletin covers the top 60 companies by Mkt. Cap out of 336 listed companies)

August 19, 2015

Index Performance relative to Volume



Sectors' Return & Valuation Multiples

	Market Cap. (EGP Mn)	MTD % Chg	P/E (X)	P/BV (X)	Yield (%)
The Egyptian Exchange	305,302	(7.5%)	15.7	1.3	2.4%
Banking & Finance	72,516	(7.5%)	9.4	2.1	2.1%
Basic Resources	13,846	(2.4%)	NM	1.5	4.2%
Chemical	20,616	(2.8%)	8.2	3.0	4.3%
Construction & Material	65,245	(10.0%)	15.9	0.7	3.3%
Financial Services	17,089	(13.6%)	33.3	0.8	1.9%
Food & Beverage	7,328	(2.6%)	20.3	2.0	3.2%
Healthcare & Pharma.	6,901	7.1%	21.5	3.6	0.0%
Ind. Goods, Services, Auto.	12,240	(6.0%)	20.0	1.5	1.8%
Media	510	0.4%	16.3	0.2	0.0%
Oil & Gas	3,100	(5.3%)	4.3	1.1	19.4%
Personal & Household	16,670	(2.9%)	13.9	1.5	0.0%
Real Estate	31,011	(13.2%)	18.3	0.9	1.0%
Telecommunication	34,230	(9.0%)	29.2	1.3	2.8%
Travel & Leisure	3,999	(5.4%)	21.3	1.1	0.0%

Sectors' MTD Return is based on the Change in market cap. and it might not conform with the benchmark return for each sector

Top 10 Stocks by Market Capitalization

	Market Cap. (EGP Mn)	P/E (X)	ROE* (%)
1-Orascom Construction Industries (OCI)	48,110	NM	NM
2-Commercial Int'l Bank (Egypt)	45,136	12.1	25.4%
3-Qatar National Bank AlAhli	17,076	7.4	19.5%
4-T M G Holding	14,837	21.8	2.6%
5-ABU Qir Fertilizers & Chemical ind. Co.	13,461	9.5	42.5%
6-Global Telecom Hldg.	11,593	NM	NM
7-EASTERN CO	10,750	11.8	18.8%
8-Elsweddy Cables	10,166	25.2	7.6%
9-MobiNil	9,800	NM	NM
10-Egyptian International Pharmaceutical	6,901	21.5	16.6%
Subtotal	139,720	15.65	11.4%

*: ROE is based on Net Profit for the Period FY-14 & Shareholders' Equity as of 31-December-14

Today's Top Movers and Most Active Stocks

Best Return Performers	Last Price (EGP)	Daily Return
Delta Sugar Co.	10.50	4.6%
Misr Beni Suef Cement	37.51	1.4%
Sidi Kerir Petrochemicals	12.77	0.6%
Al Ezz Dekheila Steel Co. Alexandria	390.00	0.5%

Worst Return Performers	Last Price (EGP)	Daily Return
El Ahli Investment and Development	6.26	(10.6%)
Orascom Construction Industries (OCI)	230.26	(10.0%)
National CementCo. - Egypt	8.44	(9.2%)
El Nasr Clothes & Textiles (Kabo)	0.63	(8.7%)
GB AUTO S.A.E	3.13	(8.5%)

Most Active Stocks By Volume	Last Price (EGP)	Volume ('000 Shrs)
Amer Group Holding	0.93	43,844
Palm Hills Developments	2.15	14,163
Egyptian Resorts Co.	1.03	14,039
Citadel Capital	1.71	5,556
Global Telecom Hldg. (Orascom Telecom)	2.21	4,937

Source: KAMCO Research

Market Return, Volatility & Trading Indicators

Market Return	Closing Value	DTD Chg	DTD % Chg	MTD % Chg	YTD-15 % Chg
EGX 30 Index	7,398.43	(196.46)	(2.6%)	(9.7%)	(17.1%)
Market Cap (EGP Mn)	305,302	(6,556)	(2.5%)	(7.5%)	(20.2%)

Benchmark Volatility**	Since Jan-14	Since Jan-13	Since Jan-12	Since Jan-11	Since Jan-10
EGX 30 Index	21%	21%	24%	25%	26%

**: Annualized Standard Deviation of Daily Returns

Trading Indicators	Today's Value	DTD Chg	DTD % Chg	Average Daily YTD-15	YTD-14
Volume (Mn Shares)	113	1.64	1.5%	78	130
Value Traded (EGP Mn)	366	62.1	20.4%	369	560
No. of Trades	13,944	3,964	39.7%	11,578	16,268

Market Breadth	▲	4	▼	47	=	9
----------------	---	---	---	----	---	---

YTD-2015 Top Movers and Most Active Stocks

YTD-15 Best Return Performers	Last Price (EGP)	Volume ('000 Shrs)	YTD-15 Return
Misr Cement Co.	85.00	8,224	19.0%
Credit Agricole Egypt	23.50	24,306	18.8%
Qatar National Bank AlAhli	35.00	2,684	12.9%
Egyptian Int'l Pharmaceutical	86.99	2,748	10.8%
Elsweddy Cables	45.50	25,085	9.6%

YTD-15 Worst Return Performers	Last Price (EGP)	Volume ('000 Shrs)	YTD-15 Return
GB AUTO S.A.E	3.13	32,308	(89.9%)
Orascom Hotels & Development	9.21	16,878	(52.6%)
Palm Hills Developments	2.15	1,055,065	(47.7%)
South Valley Cement	4.11	77,733	(45.2%)
Asec Company for Mining - Ascom	6.52	4,420	(44.7%)

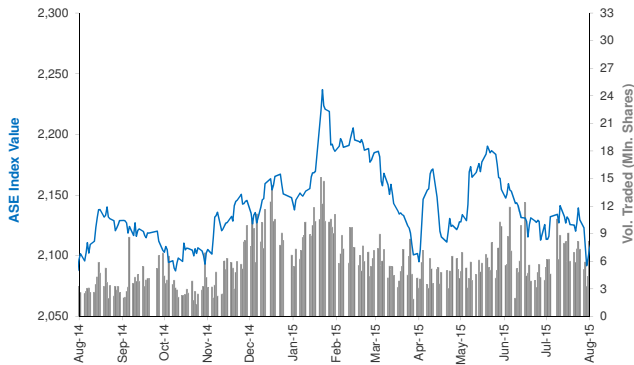
YTD-15 Most Active Stocks by Volume	Last Price (EGP)	Volume ('000 Shrs)	YTD-15 Return
Amer Group Holding	0.93	3,631,016	(27.34%)
Citadel Capital	1.71	1,560,987	(40.42%)
Global Telecom Hldg. (Orascom Telecom)	2.21	1,078,060	(44.33%)
Palm Hills Developments	2.15	1,055,065	(47.69%)
Egyptian Resorts Co.	1.03	1,014,020	(15.57%)

YTD-15 Return: Is a total return which accounts in addition to the change in price the cash & share dividends announced during the year.

Amman Stock Exchange Daily Report (1st Market)

August 19, 2015

Index Performance relative to Volume



Sectors' Return & Valuation Multiples

	Market Cap. (JD Mn)	MTD % Chg	P/E (X)	P/BV (X)	Yield (%)
Amman Stock Exchange	13,927	4.2%	12.9	0.9	5.1%
Banks	10,032	0.0%	9.6	0.8	4.8%
Insurance	96	0.3%	NM	0.8	3.3%
Diversified Financial Services	197	0.9%	NM	0.5	1.1%
Real Estate	284	2.5%	NM	0.8	0.2%
Educational Services	317	0.2%	12.0	2.0	14.7%
Hotels and Tourism	136	0.6%	23.3	0.6	55.4%
Transportation	99	(0.4%)	NM	1.6	2.2%
Technology & Commun.	690	(8.3%)	17.3	1.9	6.1%
Media	12	(9.8%)	NM	0.3	0.0%
Utilities & Energy	608	(2.6%)	14.7	2.4	3.6%
Pharmaceutical & Medical Ind.	107	4.5%	NM	0.7	2.9%
Tobacco & Cigarettes	346	1.2%	13.1	3.4	5.8%
Mining & Extraction Industries	588	(0.3%)	31.0	0.6	0.2%
Engineering & Construction	95	(2.8%)	29.6	1.3	3.6%
Textiles , Leather & Cloth.	79	(0.6%)	19.5	0.9	5.6%

Sectors' MTD Return is based on the Change in market cap. and it might not conform with the benchmark return for each sector

Top 10 Stocks by Market Capitalization

	Market Cap. (JD Mn)	P/E (X)	ROE* (%)
1-ARAB BANK	4,550	7.9	7.4%
2-HOUSING BK TRD FIN	2,344	19.5	12.2%
3-JORDAN TELECOM	675	16.1	11.9%
4-JOR ISLAMIC BANK	549	12.2	16.0%
5-JOR PHOSPHATE MN	447	22.6	2.6%
6-JOR KUWAIT BANK	397	7.9	11.5%
7-BANK OF JORDAN	389	8.3	14.0%
8-CAIRO AMMAN BANK	368	8.3	15.3%
9-JOR PETROLM REF	351	10.9	22.1%
10-EQBAL INV.CO	283	10.7	39.1%

Subtotal	10,353	10.34	8.8%
-----------------	---------------	--------------	-------------

* ROE is based on FY-2014 Net Profit & Shareholders' Equity as of 31-December-14

Today's Top Movers and Most Active Stocks

Best Return Performers	Price (JD)	Daily Return
ARAB BANK \$USD	7.10	5.2%
M. E PHARMA. & CHMICAL IND. & MEDICAL APPLIANCE	1.47	5.0%
JORDAN DUBAI PROPERTIES	0.42	5.0%
THE JORDAN PIPES MANUFACTURING	1.33	4.7%
JORDAN DAIRY	7.88	4.5%

Worst Return Performers	Price (JD)	Daily Return
AL-AMAL FINANCIAL INVESTMENTS CO.	1.52	(7.3%)
MIDDLE EAST SPECIALIZED CABLES CO.	0.16	(5.9%)
AD-DULAYL INDUSTRIAL PARK & REAL ESTATE CO.	2.09	(5.0%)
JORDAN INDUSTRIAL RESOURCES	0.25	(3.8%)
NUTRIDAR	0.52	(3.7%)

Most Active Stocks By Volume	Price (JD)	Volume ('000 Shrs)
AD-DULAYL INDUSTRIAL PARK & REAL ESTATE CO.	2.09	3,873
AL-AMAL FINANCIAL INVESTMENTS CO.	1.52	1,092
ARAB BANK \$USD	7.10	407
SPECIALIZED INVESTMENT COMPOUNDS	0.46	307
TRANSPORT& INVESTMENT BARTER CO.	0.43	212

Source: KAMCO Research

Market Return, Volatility & Trading Indicators

Market Return	Closing Value	DTD Chg	DTD % Chg	MTD % Chg	YTD-15 % Chg
ASE Index	2,139.80	14.98	0.7%	0.7%	(1.2%)
Market Cap (JD Mn)	13,926.74	247.43	1.8%	4.2%	0.2%

Benchmark Volatility**	Since Jan-2014	Since Jan-2013	Since Jan-2012
ASE Index	7.3%	7.8%	7.5%

** Annualized Standard Deviation of Daily Returns

Trading Indicators	Today's Value	DTD Chg	DTD % Chg	Average Daily YTD-15	YTD-14
Volume ('000 Shares)	7,113	280	4.1%	6,591	4,928
Value Traded (JD '000)	15,022	(1,502)	(9.1%)	7,675	6,274
No. of Trades	3,403	477	16.3%	2,405	2,288

Market Breadth	▲ 26 ▼ 22 = 71
-----------------------	-----------------------

YTD-2015 Top Movers and Most Active Stocks

YTD-15 Best Return Performers	Price (JD)	Volume ('000 Shrs)	YTD-15 Return
JORDAN DAIRY	7.88	96.0	290.1%
AD-DULAYL INDUSTRIAL PARK & REAL ESTATE CO.	2.09	272,651.8	154.9%
REAL ESTATE DEVELOPMENT	0.41	42,497.0	127.8%
AL-AMAL FINANCIAL INVESTMENTS CO.	1.52	62,502.1	74.7%
JORDAN LOAN GUARANTEE CORP.	0.90	5,839.8	69.8%

YTD-15 Worst Return Performers	Price (JD)	Volume ('000 Shrs)	YTD-15 Return
AL-TAJAMOUAT FOR CATERING AND HOUSING CO.	0.54	83,863.9	(57.8%)
JORDAN INDUSTRIAL RESOURCES	0.25	75,395.6	(49.0%)
JORDAN PRESS FOUNDATION/AL-RA'I	1.06	356.6	(47.5%)
TRANSPORT& INVESTMENT BARTER CO.	0.43	90,409.5	(41.1%)
JORDAN DUBAI PROPERTIES	0.42	3,679.0	(36.4%)

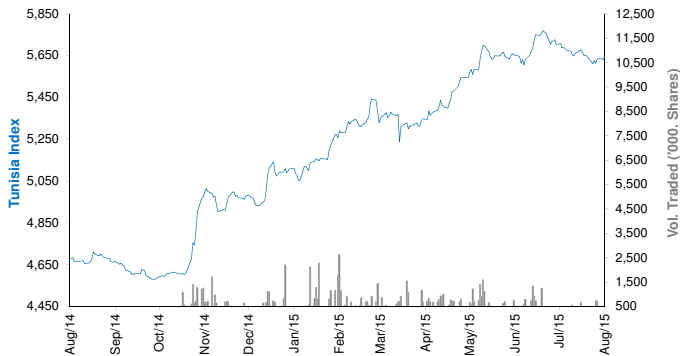
YTD-15 Most Active Stocks by Volume	Price (JD)	Volume ('000 Shrs)	YTD-15 Return
AD-DULAYL INDUSTRIAL PARK & REAL ESTATE CO.	2.09	272,652	154.9%
TRANSPORT& INVESTMENT BARTER CO.	0.43	90,410	(41.1%)
SPECIALIZED INVESTMENT COMPOUNDS	0.46	87,176	(20.7%)
AL-TAJAMOUAT FOR CATERING AND HOUSING CO.	0.54	83,864	(57.8%)
JORDAN INDUSTRIAL RESOURCES	0.25	75,396	(49.0%)

YTD-15 Return: Is a total return which accounts in addition to the change in price the cash & share dividends announced during the year.

Tunisia Stock Exchange Daily Report

August 19, 2015

Index Performance relative to Volume



Sectors' Return & Valuation Multiples

	Market Cap. (DT Mn)	MTD % Chg	P/E (X)	P/B (X)	Yield (%)
Tunis Stock Exchange	16,481	(1.9%)	13.56	1.46	2.7%
Banking	6,738	(1.6%)	16.45	1.51	3.2%
Insurance	802	(0.6%)	19.09	1.69	2.1%
Leasing	512	(0.2%)	11.64	1.26	4.2%
Financial Services	1,451	1.3%	16.02	2.21	1.1%
Industrial	1,181	2.1%	2.52	0.38	2.3%
Chemical Industry	591	(5.0%)	15.34	1.76	4.1%
Food & Beverage	2,984	(6.8%)	19.73	4.08	3.1%
Retailing	1,364	(1.3%)	NM	3.72	0.3%
Others	858	1.6%	NM	1.15	3.5%

Sectors' MTD Return is based on the Change in market cap. and it might not conform with the benchmark return for each sector

Top 10 Stocks by Market Capitalization

	Market Cap. (DT Mn)	P/E (X)	ROE* (%)
1-Société Frigorifique et Brasserie de Tunis	2,068	16.14	22.3%
2-Banque de Tunisie	1,566	17.86	14.0%
3-Banque Internationale Arabe de Tunisie	1,377	11.81	17.0%
4-Banque Attijari De Tunisie	1,002	13.46	17.7%
5-Poulina Group Holding	990	13.67	12.5%
6-Delice Holding	851	32.93	20.2%
7-Amen Bank	660	7.30	13.2%
8-Union Bancaire pour le Commerce et	510	17.55	9.9%
9-Arab Tunisian Bank	462	8.37	10.6%
10-Banque Nationale Agricole	457	24.42	3.2%
Subtotal	9,942	14.23	13.7%

*: ROE is based on Net Profit for the Period FY-14 & Shareholders' Equity as of 31-December-14

Today's Top Movers and Most Active Stocks

Best Return Performers	Price (DT)	Daily Return
Société Générale Industrielle de Filtration	3.49	5.8%
SOTIPAPIER	4.78	3.7%
Best Lease	1.75	2.9%
Hannibal Lease	8.44	2.9%
Société Tunis. d'Entreprises de Télécom.	1.76	2.9%

Worst Return Performers	Price (DT)	Daily Return
Assurances Salim	20.52	(3.0%)
TelNet Holding	4.45	(2.8%)
Société Indust. d'Appareillage et Matériel Electrique	2.52	(2.7%)
SOPAT	2.72	(2.5%)
Société Frigorifique et Brasserie de Tunis	22.98	(2.1%)

Most Active Stocks By Volume	Price (DT)	Volume (Shares)
Société Générale Industrielle de Filtration	3.49	282,762
Banque de Tunisie	10.44	79,978
Société Moderne de Céramique	2.90	75,592
Banque Nationale Agricole	14.28	37,646
Union Bancaire pour le Commerce et l'Industrie	25.50	34,636

Source: KAMCO Research

Market Return, Volatility & Trading Indicators

Market Return	Closing Value	DTD Chg	DTD % Chg	MTD % Chg	YTD-15 % Chg
Tunisia Index	5,517.83	(15.25)	(0.3%)	(2.1%)	8.4%
Market Cap (DT Mln)	16,481	(35.35)	(0.2%)	(1.9%)	1.7%

Benchmark Volatility	Since Jan-14	Since Jan-13	Since Jan-12
Tunisia Index	6.7%	6.9%	6.9%

Trading Indicators	Today's Value	DTD Chg	DTD % Chg	Average Daily YTD-15	YTD-14
Volume ('000 Shares)	547	257.7	89.0%	633	778
Value Traded ('000 DT)	3,347	1,111	49.7%	5,714	5,056
No. of Trades	1,177	306	35%	1,412	1,443

Market Breadth	▲ 18	▼ 21	= 25
----------------	------	------	------

YTD-2015 Top Movers and Most Active Stocks

YTD-15 Best Return Performers	Price (DT)	Volume ('000 Shrs)	YTD-15 Return
Banque Nationale Agricole	14.28	7,420.1	87.9%
Euro-Cycles	26.59	1,345.4	63.9%
Société de Placement et de Dévelop. Ind. et Touristique	14.50	239.9	57.8%
Banque de l'Habitat	14.00	2,349.7	36.6%
Société Tunisienne d'Assurances et de Réassurances	177.00	100.9	21.9%

YTD-15 Worst Return Performers	Price (DT)	Volume ('000 Shrs)	YTD-15 Return
Société Tunisienne d'Equipeement	5.01	0.758	(51.9%)
Société Tunis. d'Entreprises de Télécom.	1.76	736.2	(49.0%)
Société Nouvelle Maison de la Ville de Tunis	13.70	597.0	(37.7%)
Industries Chimiques du Fluor	26.27	10.8	(30.9%)
Electrostar	4.82	2,500.3	(30.0%)

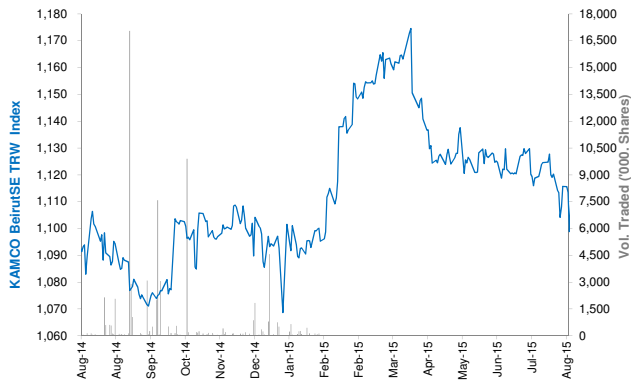
YTD-15 Most Active Stocks by Volume	Price (DT)	Volume ('000 Shrs)	YTD-15 Return
Société Moderne de Céramique	2.90	15,917.4	15.5%
Banque Nationale Agricole	14.28	7,420.1	87.9%
Société Frigorifique et Brasserie de Tunis	22.98	7,382.4	2.1%
Société d'Articles Hygiéniques	11.05	6,797.9	18.7%
TUNISAIR	0.86	4,344.4	(23.9%)

YTD-15 Return: Is a total return which accounts in addition to the change in price the cash & share dividends announced during the year.

Beirut Stock Exchange Daily Report

August 19, 2015

Index Performance relative to Volume



Sectors' Return & Valuation Multiples

	Market Cap. (USD Mn)	MTD % Chg	P/E (X)	P/B (X)	Yield (%)
Beirut Stock Exchange	11,363	(0.7%)	1.22	0.11	2.6%
Banking	9,169	(1.0%)	5.14	0.56	2.9%
Industrial	325	0.4%	6.12	0.89	8.5%
Trading	35	0.0%	0.01	0.00	0.0%
Real Estate & Construction	1,854	0.9%	10.14	1.00	0.0%

Sectors' MTD Return is based on the Change in market cap. and it might not conform with the benchmark return for each sector

Market Breadth

▲	3	▼	2	=	25
---	---	---	---	---	----

Top 10 Stocks by Market Capitalization

	Market Cap. (USD Mn)	P/E (X)	ROE* (%)
1- Bank Audi	2,379	5.97	10.3%
2- BLOM Bank	2,043	5.59	14.4%
3- Solidere A	1,119	6.12	9.8%
4- Byblos Bank	927	5.54	6.7%
5- BLOM Bank GDR	739	-	-
6- Solidere B	735	4.02	9.8%
7- Bank Audi GDR	686	-	-
8- Bank Of Beirut	310	2.86	11.2%
9- Holcim Liban	295	6.18	14.1%
10- Byblos Bank Preferred 2009	204	-	-
Subtotal	9,435	5.10	10.7%

*: ROE is based on Net Profit for the Period FY-14 & Shareholders' Equity as of 31-December-14

Market Return, Volatility & Trading Indicators

Market Return	Closing Value	DTD Chg	DTD % Chg	MTD % Chg	YTD-15 % Chg
KAMCO BeirutSE TRW Index	1,108.25	(0.42)	(0.0%)	(0.7%)	1.4%
Market Cap (USD Mn)	11,363.244	(4.33)	(0.0%)	(0.7%)	1.3%
Benchmark Volatility	Since Jan-14	Since Jan-13		Since Jan-12	
KAMCO BeirutSE TRW Index	7.7%	7.4%		7.1%	
Trading Indicators	Today's Value	DTD Chg	DTD % Chg	Average Daily YTD-15	YTD-14
Volume ('000s shares)	55.33	35	166.0%	327	662
Value Traded ('000s USD)	453.43	87	23.8%	2,628	2,878

Today's Top Movers and Most Active Stocks

Best Return Performers	Price (USD)	Daily Return
Solidere B	11.30	2.0%
Solidere A	11.19	0.9%
Byblos Bank	1.64	0.6%

Worst Return Performers	Price (USD)	Daily Return
Bank Audi GDR	5.90	(1.8%)
BLOM Bank	9.50	(1.0%)

Most Active Stocks by Volume	Price (USD)	Volume (Shares)
Bank Audi GDR	5.90	31,972
Solidere A	11.19	12,373
Solidere B	11.30	5,000
BLOM Bank	9.50	3,170
Byblos Bank	1.64	1,875

Source: KAMCO Research

YTD-2015 Top Movers and Most Active Stocks

YTD Best Return Performers	Price (USD)	YTD Volume (Shares)	YTD-15 Return
Ciments Blancs N	3.10	574	12.7%
BEMO Bank	1.90	215,084	8.6%
BLOM Bank	9.50	5,782,697	8.0%
Bank of Beirut Preferred Class J	25.75	49,298	3.0%
Byblos Bank	1.64	7,065,449	2.5%

YTD Worst Return Performers	Price (USD)	YTD Volume (Shares)	YTD-15 Return
Bank Audi GDR	5.900	7,083,191	(9.9%)
Ciments Blancs B	3.500	12,450	(6.7%)
Bank of Beirut Preferred Class E	25.500	89,831	(2.9%)
Bank of Beirut Preferred Class H	25.600	163,752	(2.5%)
BLC Bank Preferred A	101.10	12,800	(1.8%)

YTD Most Active Stocks by Volume	Price (USD)	YTD Volume (Shares)	YTD-15 Return
Bank Audi	5.95	20,997,095	(0.8%)
Bank Audi GDR	5.90	7,083,191	(9.9%)
Byblos Bank	1.64	7,065,449	2.5%
BLOM Bank	9.50	5,782,697	8.0%
Solidere A	11.19	3,314,336	(1.1%)

YTD-15 Return: Is a total return which accounts in addition to the change in price the cash & share dividends announced during the year.

Casablanca Stock Exchange Daily Report

(The Bulletin covers the 41 Stocks listed on the Main Market)

August 19, 2015

Index Performance relative to Volume



Market Breadth

▲ 12 ▼ 11 = 18

Top 10 Stocks by Market Capitalization

	Market Cap. (MAD Mn)	P/E (X)	ROE* (%)
1-Itissalat Al-Maghrib	100,612	17.2	36.8%
2-Attijariwafa Bank	69,469	16.0	12.3%
3-Banque Marocaine Du Commerce Exterieur	39,661	20.4	12.1%
4-Banque Centrale Populaire	37,745	17.2	6.9%
5-Ciments Du Maroc	18,160	22.7	12.7%
6-Wafa Assurances	12,975	16.6	19.9%
7-Holcim Maroc	9,847	16.3	30.7%
8-Douja Prom Addoha	9,028	8.9	9.1%
9-CIE Generale Immobiliere	8,648	NM	1.8%
10-Credit Immobilier Et Hotelier	8,283	17.2	10.1%
Subtotal	314,429	17.37	13.7%

*: ROE is based on Net Profit for the period FY-14 and Shareholders' equity as of 31-December-14

Today's Top Movers and Most Active Stocks

Best Return Performers	Price (MAD)	Daily Return
Med Paper	19.06	5.9%
Societe Nationale de Siderurgie	698.00	5.9%
Managem	874.00	5.2%
Societe Nationale d'Electrolyse et de Petrochimie	115.85	3.4%
TAQA MOROCCO	560.00	2.5%

Worst Return Performers	Price (MAD)	Daily Return
CIE Generale Immobiliere	469.80	(10.0%)
Miniere Touissit	1,110.00	(4.8%)
Alliances Developpement Immobilier	50.00	(2.4%)
ENNAKL Automobiles	39.10	(2.2%)
Nexans Maroc	140.00	(1.8%)

Most Active Stocks By Volume	Price (MAD)	Volume (Shrs)
Itissalat Al-Maghrib	114.45	180,065
Banque Marocaine Du Commerce Exterieur	221.00	22,185
Alliances Developpement Immobilier	50.00	17,388
Lesieur Cristal	107.50	17,095
Douja Prom Addoha	28.66	16,316

Source: KAMCO Research

Sectors' Return & Valuation Multiples

	Market Cap. (MAD Mn)	MTD % Chg	P/E (X)	P/B (X)	Yield (%)
Casablanca Stock Exchange	420,602	(2.7%)	21.3	2.0	3.3%
Banking	168,161	(1.5%)	17.6	1.7	2.7%
Beverages	1,782	(2.2%)	17.0	3.2	0.0%
Chemicals	278	(7.8%)	NM	0.6	0.0%
Construction & Bldg. Material	61,493	(5.4%)	21.9	4.0	2.1%
Distributors	9,240	(0.3%)	24.6	2.4	0.0%
Electrical & Electronic Equipment	314	(15.7%)	NM	0.0	0.0%
Electricity	1,251	0.2%	1.6	0.3	0.0%
Food Producers & Processors	3,708	0.5%	4.4	0.7	15.5%
Holding Companies	2,291	(5.9%)	15.2	2.0	4.8%
Insurance	20,923	(1.7%)	16.2	2.5	5.1%
Investment & other Finance	3,410	(3.6%)	13.7	1.6	3.0%
Leisures & Hotel	1,458	(2.6%)	NM	1.6	0.0%
Materials, Software & Computer	691	(7.3%)	9.5	0.6	4.1%
Mining	14,169	(0.1%)	23.7	2.5	2.3%
Oil & Gas	8,396	(1.7%)	NM	0.9	0.0%
Real Estate	18,300	(10.4%)	23.1	1.0	0.0%
Telecommunications	100,612	(2.3%)	17.2	6.3	6.0%
Transport	570	4.5%	14.7	2.1	0.0%
Utilities	3,504	0.0%	12.4	2.0	0.0%
Forestry & Paper	49	19.1%	NM	2.3	0.0%

Sectors' MTD Return is based on the Change in market cap. and it might not conform with the benchmark return for each sector

Market Return, Volatility & Trading Indicators

Market Return	Closing Value	DTD Chg	DTD % Chg	MTD % Chg	YTD-15 % Chg
MASI Index	9,497.82	0.1	0.0%	(2.5%)	(1.3%)
MADEX Index	7,773.53	1.1	0.0%	(2.6%)	(0.9%)
Market Cap (MAD Mn)	420,602	(0.2)	(0.0%)	(2.7%)	(2.6%)

Benchmark Volatility**	YTD-14	Since Jan-13	Since Jan-12	Since Jan-11	Since Jan-10
MASI Index	7.9%	8.3%	8.8%	9.8%	9.8%
MADEX Index	9.6%	8.4%	8.7%	9.2%	10.1%

** Annualized Standard Deviation of Daily Returns

Trading Indicators	Today's Value	DTD Chg	DTD % Chg	Average Daily YTD-15	YTD-14
Volume ('000 Shares)	293.14	208.63	246.9%	605	516
Value Traded (MAD Mn)	19.65	13.71	230.7%	46	70

YTD-2015 Top Movers and Most Active Stocks

YTD Best Return Performers	Price (MAD)	Volume (Shrs)	YTD-15 Return
Compagnie de Transport au Maroc	465.00	35,923	43.1%
Ciments Du Maroc	1,258.00	276,852	33.8%
TAQA MOROCCO	560.00	598,281	31.8%
Hightech Payment Systems SA	460.00	28,647	23.6%
Holcim Maroc	2,339.00	153,607	22.8%

YTD Worst Return Performers	Price (MAD)	Volume (Shrs)	YTD-15 Return
Alliances Developpement Immobilier	50.00	2,417,476	(82.0%)
Marocaine de l Industrie du Raffinage	127.80	431,324	(47.0%)
Societe Nationale d'Electrolyse et de Petrochimie	115.85	84,690	(44.0%)
CIE Generale Immobiliere	469.80	42,713	(35.2%)
Fenie Brossette	127.85	21,422	(33.8%)

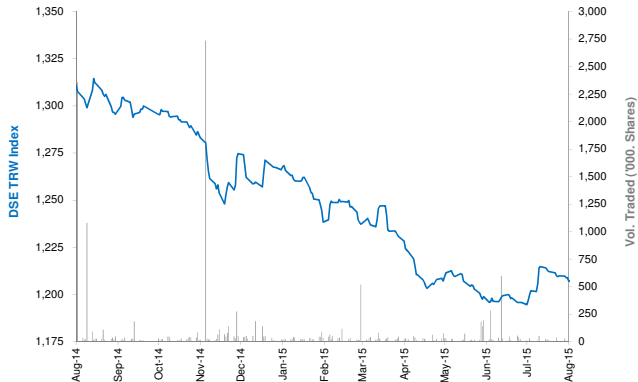
YTD Most Active Stocks by Volume	Price (MAD)	Volume ('000 Shrs)	YTD-15 Return
Douja Prom Addoha	28.66	34,725	(23.8%)
Itissalat Al-Maghrib	114.45	18,545	0.6%
Attijariwafa Bank	345.20	9,193	0.3%
Comp Suc Maroc Et De Raff	176.00	6,985	5.5%
Banque Marocaine Du Commerce Exterieur	221.00	6,452	0.5%

YTD-15 Return: accounts in addition to the chg in price the cash & share dividends announced during the year.

Damascus Securities Exchange Daily Report

August 19, 2015

Index Performance relative to Volume



Sectors' Return & Valuation Multiples

	Market Cap. (SRY Mn)	MTD % Chg	P/E (X)	P/B (X)	Yield (%)
Damascus SE	124,954	(0.4%)	4.9	0.9	0.3%
Banking	111,116	(0.4%)	4.70	0.84	0.0%
Services	1,470	0.0%	26.68	2.67	2.0%
Industrial	3,926	0.0%	6.62	1.58	0.0%
Insurance	7,903	(1.1%)	7.04	0.88	4.7%
Agricultural	539	0.0%	NM	3.81	0.0%

Sectors' MTD Return is based on the Change in market cap. and it might not conform with the benchmark return for each sector

Market Breadth

▲	1	▼	2	=	21
---	---	---	---	---	----

Top 10 Stocks by Market Capitalization

	Market Cap. (SRY Mn)	Trailing P/E (X)	ROE* (%)
1- Banque Bemo Saudi Fransi	16,950	7.3	20.6%
2- Qatar National Bank - Syria	14,475	1.7	23.5%
3- Bank Audi Syria	13,238	4.5	29.1%
4- Bank Of Syria And Overseas	9,400	4.7	25.7%
5- Arab Bank- Syria	9,301	NM	NM
6- The Int'l Bank For Trade & Finance	8,059	NM	0.1%
7- Syria International Islamic Bank	7,815	NM	NM
8- Byblos Bank Syria	7,650	7.0	13.7%
9- Al Baraka Bank - Syria	5,715	2.2	24.0%
10- Cham Bank	4,500	2.1	21.4%
Subtotal	92,602	4.89	17.5%

* ROE is based on FY-2014 Net Profit & Shareholders' Equity as of 31-December-14

Today's Top Movers & Most Active Stocks

Best Return Performers	Price (SRY)	Daily Return
Al Baraka Bank - Syria	114.29	1.1%

Worst Return Performers	Price (SRY)	Daily Return
United Insurance Co.	167.00	(1.9%)
Qatar National Bank Syria	96.50	(0.5%)

Most Active Stocks by Volume	Price (SRY)	Volume (Shrs)
United Insurance Co.	167.00	10,000
Qatar National Bank Syria	96.50	7,329
Al Baraka Bank - Syria	114.29	5,025
Alahliah Vegetable Oil Company E.S.A	261.75	475

Source: KAMCO Research

Market Return, Volatility & Trading Indicators

Market Return	Closing Value	DTD Chg.	DTD % Chg.	MTD % Chg.	YTD-15 % Chg.
DSE Weighted Index	1,206.89	(0.37)	(0.0%)	(0.4%)	(5.1%)
Market Cap (SRY Mn)	124,954	(38)	(0.0%)	(0.4%)	(5.6%)

Benchmark Volatility	Since Jan-14	Since Jan-13	Since Jan-12
DSE Weighted Index	4.7%	9.8%	8.9%

** Annualized Standard Deviation of Daily Returns

Trading Indicators	Today's Value	DTD Chg.	DTD % Chg.	Average Daily YTD-15	YTD-14
Volume (Shrs)	22,829	10,829	90.2%	39,098	183
Value Traded ('000 SRY)	3,076	1,147	59.5%	5,356	21,617
No. of Trades	12	10.0	500.0%	23	47

YTD-2015 Top Movers & Most Active Stocks

YTD Best Return Performers	Price (SRY)	YTD Vol. (Shrs)	YTD-15 Return
Alahliah Vegetable Oil Company E.S.A	261.75	58,346	19.0%
United Insurance Co.	167.00	60,840	7.7%
Bank Al Sharq	135.00	31,505	3.6%
Bank Of Syria And Overseas	235.00	224,065	2.6%
Arab Bank- Syria	184.18	106,419	1.2%

YTD Worst Return Performers	Price (SRY)	YTD Vol. (Shrs)	YTD-15 Return
Qatar National Bank Syria	96.50	865,890	(19.4%)
National Insurance Company	118.25	170,750	(17.5%)
Syria International Islamic Bank	91.95	1,010,396	(16.2%)
Cham Bank	90.00	245,857	(13.7%)
Al Baraka Bank - Syria	114.29	996,164	(9.2%)

YTD Most Active Stocks by Volume	Price (SRY)	YTD Vol. (Shrs)	YTD-15 Return
Syria International Islamic Bank	91.95	1,010,396	(16.2%)
Al Baraka Bank - Syria	114.29	996,164	(9.2%)
Qatar National Bank Syria	96.50	865,890	(19.4%)
Bank Audi Syria	231.25	574,966	0.0%
Cham Bank	90.00	245,857	(13.7%)

YTD-15 Return: Is a total return which accounts in addition to the change in price the cash & share dividends announced during the year.

Disclaimer & Important Disclosures

KAMCO is authorized and fully regulated by the Capital Markets Authority ("**CMA**") and partially regulated by the Central Bank of Kuwait ("**CBK**")

This document is provided for informational purposes only. Nothing contained in this document constitutes investment, an offer to invest, legal, tax or other advice or guidance and should be disregarded when considering or making investment decisions. In preparing this document, KAMCO did not take into account the investment objectives, financial situation and particular needs of any particular person. Accordingly, before acting on this document, investors should independently evaluate the investments and strategies referred to herein and make their own determination of whether it is appropriate in light of their own financial circumstances and objectives. The entire content of this document is subject to copyright with all rights reserved. This research and the information contained herein may not be reproduced, distributed or transmitted in Kuwait or in any other jurisdiction to any other person or incorporated in any way into another document or other material without our prior written consent.

Analyst Certification

Each of the analysts identified in this report certifies, with respect to the sector, companies or securities that the individual analyses, that (1) the views expressed in this report reflect his or her personal views about all of the subject companies and securities and (2) no part of his or her compensation was, is or will be directly or indirectly dependent on the specific recommendations or views expressed in this report.

KAMCO Ratings

KAMCO investment research is based on the analysis of regional and country economics, industries and company fundamentals. KAMCO company research reflects a long-term (12-month) target price for a company or stock. The ratings bands are:

- * **Outperform:** Target Price represents expected returns $\geq 10\%$ in the next 12 months
- * **Neutral:** Target Price represents expected returns between -10% and $+10\%$ in the next 12 months
- * **Underperform:** Target Price represents an expected return of $<-10\%$ in the next 12 months

In certain circumstances, ratings may differ from those implied by a fair value target using the criteria above. KAMCO policy is to maintain up-to-date fair value targets on the companies under its coverage, reflecting any material changes to the analyst's outlook on a company. Share price volatility may cause a stock to move outside the rating range implied by KAMCO's fair value target. Analysts may not necessarily change their ratings if this happens, but are expected to disclose the rationale behind their view to KAMCO clients.

Any terms and conditions proposed by you which are in addition to or which conflict with this Disclaimer are expressly rejected by KAMCO and shall be of no force or effect. The information contained in this document is based on current trade, statistical and other public information we consider reliable. We do not represent or warrant that such information is fair, accurate or complete and it should not be relied upon as such. KAMCO has no obligation to update, modify or amend this document or to otherwise notify a recipient thereof in the event that any opinion, forecast or estimate set forth herein, changes or subsequently becomes inaccurate. The publication is provided for informational uses only and is not intended for trading purposes. The information on publications does not give rise to any legally binding obligation and/or agreement, including without limitation any obligation to update such information. You shall be responsible for conducting your own investigation and analysis of the information contained or referred to in this document and of evaluating the merits and risks involved in the securities forming the subject matter of this or other such document. Moreover, the provision of certain data/information in the publication may be subject to the terms and conditions of other agreements to which KAMCO is a party.

Nothing in this document should be construed as a solicitation or offer, or recommendation, to acquire or dispose of any investment or to engage in any other transaction, or to provide any investment advice or service. This document is directed at Professional Clients and not Retail Clients within the meaning of CMA rules. Any other persons in receipt of this document must not rely upon or otherwise act upon it. Entities and individuals into whose possession this document comes are required to inform themselves about, and observe such restrictions and should not rely upon or otherwise act upon this document where it is unlawful to make to such person such an offer or invitation or recommendation without compliance with any authorization, registration or other legal requirements.

Risk Warnings

Any prices, valuations or forecasts are indicative and are not intended to predict actual results, which may differ substantially from those reflected. The value of an investment may go up as well as down. The value of and income from any investment may fluctuate from day to day as a result of changes in relevant economic markets (including, without limitation, foreseeable or unforeseeable changes in interest rates, foreign exchange rates, default rates, prepayment rates, political or financial conditions, etc.).

Past performance is not indicative of future results. Any opinions, estimates, valuations or projections (target prices and ratings in particular) are inherently imprecise and a matter of judgment. They are statements of opinion and not of fact, based on current expectations, estimates and projections, and rely on beliefs and assumptions. Actual outcomes and returns may differ materially from what is expressed or forecasted. There are no guarantees of future performance. Certain transactions, including those involving futures, options, and other derivatives, give rise to substantial risk and are not suitable for all investors. This document does not propose to identify or to suggest all of the risks (direct or indirect) which may be associated with the investments and strategies referred to herein.

Conflict of Interest

KAMCO and its affiliates provide full investment banking services, and they and their directors, officers and employees, may take positions which conflict with the views expressed in this document. Salespeople, traders, and other professionals of KAMCO may provide oral or written market commentary or trading strategies to our clients and our proprietary trading desks that reflect opinions that are contrary to the opinions expressed in this document. Our asset management area, our proprietary trading desks and investing businesses may make investment decisions that are inconsistent with the recommendations or views expressed in this document. KAMCO may have or seek investment banking or other business relationships for which it will receive compensation from the companies that are the subject of this document. Facts and views presented in this document have not been reviewed by, and may not reflect information known to, professionals in other KAMCO business areas, including investment banking personnel. United Gulf Bank, Bahrain owns majority of KAMCO's shareholding and this ownership may create, or may create the appearance of, conflicts of interest.

No Liability & Warranty

KAMCO makes neither implied nor expressed representations or warranties and, to the fullest extent permitted by applicable law, we hereby expressly disclaim any and all express, implied and statutory representations and warranties of any kind, including, without limitation, any warranty as to accuracy, timeliness, completeness, and fitness for a particular purpose and/or non-infringement. KAMCO will accept no liability in any event including (without limitation) your reliance on the information contained in this document, any negligence for any damages or loss of any kind, including (without limitation) direct, indirect, incidental, special or consequential damages, expenses or losses arising out of, or in connection with your use or inability to use this document, or in connection with any error, omission, defect, computer virus or system failure, or loss of any profit, goodwill or reputation, even if expressly advised of the possibility of such loss or damages, arising out of or in connection with your use of this document. We do not exclude our duties or liabilities under binding applicable law.



KAMCO Investment Company – K.S.C (Public)

Al-Shaheed Tower, Khalid Bin Al-Waleed Street- Sharq

P.O. BOX : 28873, Safat 13149, State of Kuwait

Tel: (+965) 1852626 Fax: (+965) 22492395

Email : Kamcoird@kamconline.com