

MENA Markets Daily Report

July 12, 2015

	Country	Benchmark		Index Value	DTD Change	YTD 2015	FY 2014
MENA Countries							
In this Report...	Kuwait	KSE Price Index	▼	6,139.22	(0.3%)	(6.1%)	(13.4%)
Kuwait 2	Kuwait	KSE Weighted Index	▲	418.30	0.2%	(4.7%)	(3.1%)
Saudi Arabia 3	Kuwait	KAMCO TRW Index	▲	2,678.08	0.1%	(2.8%)	(1.9%)
UAE - Dubai 4	Saudi Arabia	TADAWUL All Share Index	▲	9,281.76	2.5%	11.4%	(2.4%)
UAE - Abu Dhabi 5	UAE - Dubai	DFM General Index	▲	4,017.30	0.8%	6.4%	12.0%
Qatar 6	UAE - Abu Dhabi	ADX General Index	▲	4,707.94	0.3%	4.0%	5.6%
Bahrain 7	Qatar	QE 20 Index	▲	11,880.82	0.8%	(3.3%)	18.4%
Oman 8	Bahrain	Bahrain All Share	▼	1,334.54	(0.1%)	(6.5%)	14.2%
Egypt 9	Oman	MSM 30 Index	▲	6,436.75	0.5%	1.5%	(7.2%)
Jordan 10	Egypt	EGX 30	▲	7,617.39	0.9%	(14.7%)	31.6%
Tunisia 11	Jordan	ASE Index	▼	2,112.97	(0.7%)	(2.4%)	4.8%
Lebanon 12	Lebanon	KAMCO Beirut SE TRW Index	▲	1,118.78	0.3%	2.4%	3.5%
Morocco 13	Tunisia	Tunisia Index	▼	5,676.18	(0.1%)	11.5%	16.2%
Syria 14	Morocco	MASI	▲	9,646.24	0.6%	0.3%	5.6%
	Syria	DSE Weighted Index	▲	1,195.79	0.0%	(5.9%)	1.7%
Emerging Markets							
	China	SSE Composite Index	▲	3,877.80	4.5%	19.9%	52.9%
	Russia	RUSSIAN RTS INDEX (\$)	▲	905.20	1.7%	14.5%	(45.2%)
	India	SENSEX	▲	27,661.40	0.3%	0.6%	29.9%
	Brazil	BOVESPA Stock Index	▲	52,590.72	1.6%	5.2%	(2.9%)
	Mexico	BOLSA Index	▲	44,915.98	0.8%	4.1%	1.0%
	Korea	KOSPI Index	▲	2,031.17	0.2%	6.0%	(4.8%)
	Taiwan	TAIEX Index	▼	8,914.13	(0.7%)	(4.2%)	8.1%
Global Markets							
	World	MSCI World Index	▲	1,743.32	1.5%	2.0%	2.9%
	Asia	MSCI Asia Pacific	▲	141.05	0.3%	2.3%	(2.5%)
	Europe	DJ Stoxx 600	▲	388.80	2.0%	13.5%	4.4%
	Europe	FTSEurofirst 300	▲	1,543.01	2.1%	12.8%	4.0%
	Emerging Markets	MSCI EM Index	▲	932.85	1.4%	(2.5%)	(4.6%)
	U.S.A	S&P 500	▲	2,076.62	1.2%	0.9%	11.4%
	U.S.A	DJIA	▲	17,760.41	1.2%	(0.4%)	7.5%
	U.S.A	NASDAQ Composite	▲	4,997.70	1.5%	5.5%	13.4%
	UK	FTSE 100	▲	6,673.38	1.4%	1.6%	(2.7%)
	Germany	DAX	▲	11,315.63	2.9%	15.4%	2.7%
	Japan	NIKKEI 225	▼	19,779.83	(0.4%)	13.3%	7.1%
	Hong Kong	HANG SENG INDEX	▲	24,901.28	2.1%	5.5%	1.3%
Commodities							
	Oil	OPEC Crude	▲	55.54	3.3%	6.8%	(49.6%)
	Oil	Brent	▲	58.73	0.2%	(6.6%)	(45.6%)
	Oil	Kuwait	▲	56.90	2.7%	8.1%	(51.7%)
	Natural Gas	NYMEX Natural Gas (USD/MMBtu)	▲	2.77	1.6%	(8.5%)	(33.8%)
	Gold	Gold Spot \$/Oz	▼	1,160.08	(0.1%)	(2.3%)	(1.4%)

Investment Research Department
Kamcoird@kamconline.com

P.O.Box 28873, Safat 13149 Kuwait
Tel: (965) 1852626, Extn: 1153 / 1146
Fax: (965) 22492395

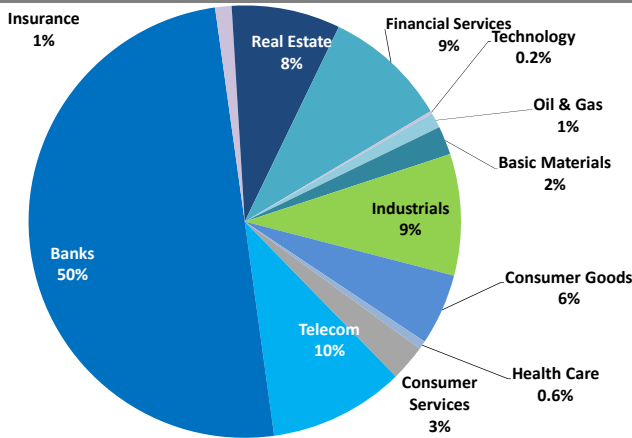
<http://www.kamconline.com>

KAMCO Investment Company - K.S.C
(Public)

Source: Bloomberg & KAMCO Research

Kuwait Market Daily Report

Sector Weight by Market Cap



Top 10 Companies by Market Capitalization

Company Name	Market Cap. (Mn KWD)	P/E (X)	ROE* (%)
1- National Bank of Kuwait	4,384.6	16.0	10.5%
2- Kuwait Finance House	3,002.0	23.0	7.7%
3- Zain	1,815.0	10.1	11.8%
4- Ahli United Bank - Bahrain	1,374.1	9.8	14.6%
5- Kuwait Food Co. (Americana)	1,125.6	22.0	13.6%
6- Kuwait Projects Co.	928.4	19.4	10.0%
7- Ahli United Bank - Kuwait	897.7	17.8	15.2%
8- Commercial Bank of Kuwait	889.5	17.8	8.9%
9- Boubyan Bank	876.9	29.3	10.2%
10- Burgan Bank	860.7	13.8	9.9%
Total	16,154	15.89	10.7%

*: ROE is calculated based on TTM 1Q-2015 net profit & shareholders' equity as of 31-March-15

Top Movers and Most Active Stocks

Today's Top % Gainers	Close (KWD)	Change (KWD)	Percent Change
Al-Mowasat Healthcare Co.	0.192	0.020	11.6%
Arkan Al-Kuwait Real Estate Co.	0.120	0.010	9.1%
Yiaco Medical Co.	0.140	0.010	7.7%
Al Themar International Holding Co.	0.090	0.005	5.9%
Palms Agro Production Co.	0.098	0.005	5.4%

Today's Top % Losers	Close (KWD)	Change (KWD)	Percent Change
National Petroleum Services Co.	0.550	(0.050)	(8.3%)
Kout Food Group	0.590	(0.050)	(7.8%)
Mashaer Holding Co.	0.122	(0.010)	(7.6%)
Safwan Trading & Contracting Co.	0.270	(0.020)	(6.9%)
Kuwait Real Estate Holding Co.	0.027	(0.002)	(5.4%)

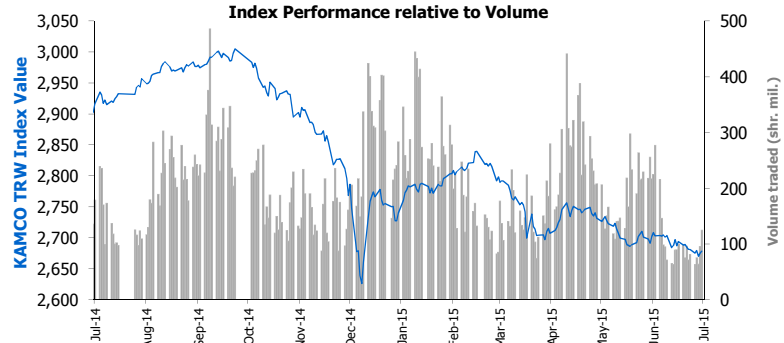
Today's Most Active by Volume	Close (KWD)	Change (KWD)	Volume (Shares)
Al Dar National Real Estate Co.	0.036	(0.001)	52,812,416
Manazel Holding Co.	0.042	0.001	13,346,049
Al-Madina for Finance & Investment Co.	0.048	(0.001)	6,119,909
Gulf Finance House	0.058	0.000	4,382,980
Hits Telecom Holding Co.	0.028	(0.001)	3,851,591

Source: KAMCO Research

Market Capitalization - Sectors' Return

	Market Cap. (KWD Mn)	DTD ▲	DTD % Chg	MTD % Chg	YTD % Chg
Kuwaiti Stock Exchange	28,605.2	▲	0.2%	(0.5%)	(3.7%)
Oil & Gas	328.1	▼	(1.5%)	(2.6%)	(16.1%)
Basic Materials	608.7	▲	0.7%	(3.7%)	(6.2%)
Industrials	2,601.1	▼	(0.7%)	(4.0%)	(4.7%)
Consumer Goods	1,522.4	▼	(0.0%)	2.6%	25.1%
Health Care	183.0	▲	2.2%	2.5%	(0.5%)
Consumer Services	773.3	▲	0.3%	(0.5%)	(0.5%)
Telecommunications	2,898.6	▲	0.2%	0.4%	(13.4%)
Banks	14,290.3	▲	0.6%	(0.1%)	(2.1%)
Insurance	356.6	▲	0.1%	(0.6%)	(0.1%)
Real Estate	2,324.4	▼	(0.4%)	(1.2%)	(2.9%)
Financial Services	2,665.8	▼	(0.7%)	(0.8%)	(11.5%)
Technology	52.9	▼	(2.2%)	(4.6%)	(6.0%)

Market Breadth	▲	35	▼	57	=	100
Benchmark Return	Closing	DTD	DTD	MTD	YTD	
	Value	Chg	% Chg	% Chg	% Chg	
KAMCO TRWI	2,678.08	3.2	0.1%	(0.3%)	(2.8%)	
KSE Price Index	6,139.22	(17.5)	(0.3%)	(1.0%)	(6.1%)	
KSE Weighted Index	418.30	0.7	0.2%	(0.4%)	(4.7%)	
Kuwait 15 Index	1,016.46	1.6	0.2%	(0.1%)	(4.1%)	
Market Cap (KWD Mn)	28,605	50.0	0.2%	(0.5%)	(3.7%)	



Market Trading Data and Volatility

Trading Indicators	Today's Value	DTD Chg	DTD % Chg	Average Daily YTD 2015	YTD 2014
Volume (Shrs Mn)	124.8	29.5	30.9%	196.1	225.2
Value Traded (KWD Mn)	11.9	(1.4)	(10.5%)	18.8	26.7
No. of Trades	2,586	593.0	29.8%	4,432	4,845

Market Volatility**	Volatility Since January:				
	2015	2014	2013	2012	2011
KAMCO TRW Index	5.5%	6.6%	6.1%	5.9%	6.9%
KSE Price Index	7.5%	9.6%	10.6%	9.9%	9.6%
KSE Weighted Index	8.2%	9.8%	8.9%	8.6%	9.8%

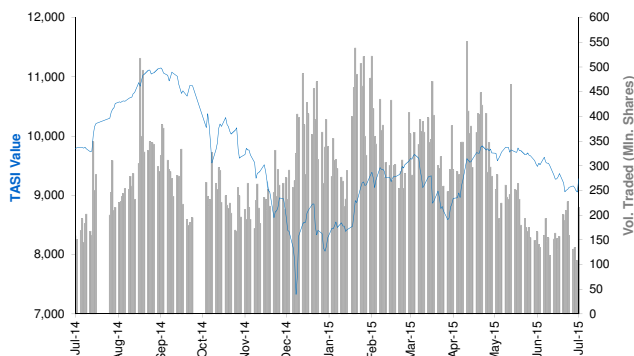
** Annualized Standard Deviation of Daily Returns

Today's Most Active by Value	Close (KWD)	Change (KWD)	Value (KWD)
Al Dar National Real Estate Co.	0.036	(0.001)	1,942,345
National Bank of Kuwait	0.870	0.010	1,799,500
kuwait Telecommunication Co.	0.950	0.010	597,834
Agility	0.650	(0.010)	583,921
Warba Bank	0.214	(0.002)	578,255

Saudi Tadawul Daily Report

July 12, 2015

Index Performance relative to Volume



Sectors' Return & Valuation Multiples

	Market Cap. (SAR Mn)	MTD Return	P/E (X)	P/BV (X)	Yield (%)
Saudi Stock Exchange	2,065,375	2.4%	19.3	2.2	2.3%
Banks & Financial	571,938	3.6%	13.6	2.0	2.0%
Petrochemical Industries	489,261	4.5%	16.6	1.9	2.5%
Cement	88,904	(0.5%)	14.2	2.8	5.4%
Retail	96,757	(0.1%)	32.2	6.6	1.4%
Energy & Utilities	79,921	7.9%	29.1	1.4	3.7%
Agric. & Food Ind.	129,051	2.2%	25.6	4.5	2.1%
Telecom	168,295	(0.2%)	23.9	2.0	4.2%
Insurance	49,666	1.1%	66.8	2.8	0.3%
Multi-Inv.	83,721	(5.9%)	71.9	2.3	2.4%
Indust. Inv.	79,478	5.3%	25.6	2.0	1.4%
Bldg. & Const.	27,501	(0.7%)	49.1	2.6	2.5%
Real Estate Dev.	129,667	(0.0%)	47.8	2.4	0.6%
Transport	38,177	0.5%	20.7	2.8	1.6%
Media & Publishing	3,797	(3.3%)	NM	1.7	0.0%
Hotel & Tourism	29,241	1.3%	19.6	5.1	1.5%

Sectors' MTD Return is based on the Change in market cap. and it might not conform with the benchmark return for each sector

Top 10 Stocks by Market Capitalization

	Market Cap. (SAR Mn)	P/E (X)	ROE* (%)
1- Saudi Basic Industries Corp	304,200	14.5	12.6%
2- Saudi Telecom	134,360	12.1	18.4%
3- National Commercial Bank	133,200	15.3	18.3%
4- Al-Rajhi Bank	102,083	15.4	15.8%
5- Saudi Electricity Co.	77,665	30.1	4.5%
6- Kingdom Holding Co.	76,045	NM	2.9%
7- Jabal Omar Development Company	69,370	NM	0.0%
8- AL-Marai Co.	55,068	32.3	15.4%
9- Samba Financial Group	54,640	10.8	13.0%
10- SABB	50,730	11.8	16.5%

Subtotal	1,057,361	17.08	12.6%
----------	-----------	-------	-------

* ROE is based on TTM 1Q-2015 Net Profit & Shareholders' Equity as of 31-March-15

Today's Top Movers and Most Active Stocks

Best Return Performers	Price (SAR)	Daily Return	Value (SAR 000's)
Saudi Arabian Mining Co.	43.00	9.9%	568,371
Saudi Basic Industries Corp	101.40	9.9%	1,095,615
Makkah Construction & Development Co.	94.89	8.5%	49,146
Saudi Electricity Co.	18.64	7.6%	125,304
Mediterranean & Gulf Ins. & Re-ins Co.	42.25	5.6%	60,632

Worst Return Performers	Price (SAR)	Daily Return	Value (SAR 000's)
AL-Marai Co.	91.78	(1.5%)	22,364
Saudi Enaya Cooperative Insurance Co.	26.82	(1.4%)	12,899
Saudi Fisheries Co.	21.63	(1.1%)	7,536
Al Khaleej Training & Education Co.	59.49	(1.1%)	29,045
Alinma Tokio Marine Co.	43.29	(1.1%)	3,941

Most Active Stocks By Volume	Price (SAR)	Daily Return	Volume ('000 Shrs)
Alinma Bank	22.78	1.6%	41,894
Dar Al Arkan Real Estate Dev. Co.	8.94	1.6%	13,866
Saudi Arabian Mining Co.	43.00	9.9%	13,466
Saudi Kayan	10.95	3.2%	12,950
Saudi Basic Industries Corp	101.40	9.9%	11,119

Source: KAMCO Research

Market Return, Volatility & Trading Indicators

Market Return	Closing Value	DTD Chg	DTD % Chg	MTD % Chg	YTD-15 % Chg
Tadawul All Share Index	9,281.76	223.9	2.5%	2.1%	11.4%
Market Cap (SAR Mn)	2,065,375	59,586.1	3.0%	2.4%	13.7%
Benchmark Volatility**	Since Jan-14	Since Jan-13	Since Jan-12	Since Jan-11	Since Jan-10
Tadawul All Share Index	19.8%	16.8%	15.8%	16.8%	16.6%
** Annualized Standard Deviation of Daily Returns					
Trading Indicators	Today's Value	DTD Chg	DTD % Chg	Average Daily YTD-15	YTD-14
Volume (Mn Shares)	215	107	99.1%	296	288
Value Traded (SAR Mn)	7,263	3,751	106.8%	8,006	8,556
No. of Trades	105,217	37,943	56.4%	142,339	143,649

Market Breadth	▲	140	▼	19	=	10
----------------	---	-----	---	----	---	----

YTD-2015 Top Movers and Most Active Stocks

YTD-15 Best Return Performers	Price (SAR)	YTD Val (SAR Mn)	YTD Vol ('000 Shrs)	YTD-15 Return
Saudi Transport & Investment Co.	71.48	9,678	187,238	110.7%
The Co for Cooperative Ins.	97.75	6,926	88,138	95.5%
Saudi Company for Hardware	132.50	4,678	35,348	89.3%
Al-Babtain Power & Telecom. Co.	47.21	2,901	69,839	74.2%
Takween Advanced Industries	79.46	6,688	104,477	68.3%

YTD-15 Worst Return Performers	Price (SAR)	YTD Val (SAR Mn)	YTD Vol ('000 Shrs)	YTD-15 Return
SALAMA Cooperative Insurance Company	16.15	1,485	54,072	(42.1%)
Middle East Specialised Cables	13.42	11,043	586,472	(38.8%)
Solidarity Saudi Takaful co.	12.89	6,731	343,798	(36.5%)
Saudi Arabian Cooperative Ins. Co.	21.96	3,446	89,578	(36.4%)
National Industrialization Co	19.12	11,418	464,982	(28.9%)

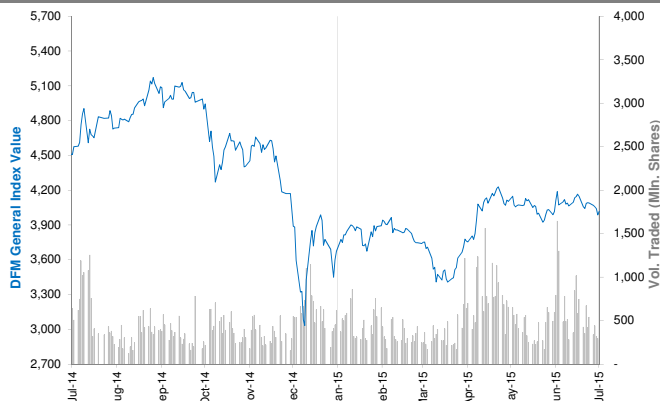
YTD-15 Most Active Stocks by Volume	Price (SAR)	YTD Val (SAR Mn)	YTD Vol ('000 Shrs)	YTD-15 Return
Dar Al Arkan Real Estate Dev. Co.	8.94	57,951	6,158,533	9.8%
Alinma Bank	22.78	96,689	4,237,802	12.8%
Saudi Kayan	10.95	23,575	1,911,393	0.0%
ZAIN KSA	11.75	16,459	1,798,425	(1.5%)
Saudi Arabian Mining Co.	43.00	48,175	1,208,234	41.0%

YTD-15 Return: Is a total return which accounts in addition to the change in price the cash & share dividends announced during the year.

Dubai Financial Market Daily Report

July 12, 2015

Index Performance relative to Volume



Top 10 Stocks by Market Capitalization

	Market Cap (AED Mn)	P/E (X)	ROE* (%)
1- EMAAR Properties	54,844	14.2	10.8%
2- Emirates NBD	54,133	9.4	12.5%
3- EMAAR MALLS GROUP	41,646	23.3	12.6%
4- Dubai Islamic Bank	26,806	9.3	15.7%
5- Emirates Integrated Telecom. (DU)	24,046	11.4	28.4%
6- Mashreq Bank	19,444	7.8	15.4%
7- Dubai Financial Market	17,067	25.1	7.8%
8- DAMAC Properties Dubai	15,300	3.8	66.4%
9- Commercial Bank of Dubai	14,529	12.0	16.1%
10- Arabtec Holding P.J.S.C.	11,032	NM	NM
Subtotal	296,100	11.47	14.2%

* ROE is based on TTM 1Q-2015 Net Profit & Shareholders' Equity as of 31-March-15

Today's Top Movers and Most Active Stocks

Best Return Performers	Price (AED)	Daily Return	Value Traded (AED)
Drake and Scull International	0.850	7.2%	62,964,305
Takaful Emarat	1.950	3.2%	174,947
Al-Madina for Finance & Investment	0.615	2.7%	9,876
SHUAA Capital	0.618	2.7%	213,571
Gulf Navigation Holding	0.318	2.3%	568,754

Worst Return Performers	Price (AED)	Daily Return	Value Traded (AED)
Takaful House	0.583	(2.7%)	146,395
Dubai Islamic Bank	6.780	(1.0%)	11,159,941
Dubai Parks And Resorts	1.180	(0.8%)	7,838,593
DAMAC Properties Dubai	3.060	(0.6%)	21,748,103
Dubai Investment	2.840	(0.4%)	6,892,698

Most Active Stocks by Volume	Price (AED)	Daily Return	Volume Traded ('000 Shrs)
Drake and Scull International	0.850	7.2%	74,754
Gulf Finance House	0.711	0.3%	39,319
Amlak Finance	2.630	0.8%	38,385
Deeyar Development	0.809	1.3%	23,265
Arabtec Holding P.J.S.C.	2.510	1.2%	18,801

Source: KAMCO Research

Sectors' Return & Valuation Multiples

	Market Cap. (AED Mn)	MTD % Chg	P/E (X)	P/BV (X)	Yield (%)
Dubai Financial Market	375,320	(1.8%)	12.4	1.4	2.3%
Banking	132,796	(0.7%)	10.2	1.3	3.2%
Consumer Staples	10,621	(0.5%)	NM	1.4	0.7%
Investment & Financial	30,449	(2.5%)	14.1	1.4	3.3%
Insurance	6,076	0.4%	7.8	0.6	6.1%
Industrial	5,211	(7.9%)	41.4	0.7	1.7%
Real Estate & Construction	134,606	(2.8%)	NM	1.8	0.9%
Telecommunication	24,305	(1.7%)	11.5	2.9	3.8%
Transportation	28,079	(0.5%)	30.9	1.5	2.2%
Services	3,176	(1.9%)	3.0	0.4	1.2%

Sectors' MTD Return is based on the Change in market cap. and it might not conform with the benchmark return for each sector

Market Breadth	▲ 27 ▼ 5 = 28
----------------	---------------

Market Return, Volatility & Trading Indicators

Market Return	Closing Value	DTD Chg	DTD % Chg	MTD % Chg	YTD-15 % Chg
DFM General Index	4,017.30	30.70	0.8%	(1.7%)	6.4%
Market Cap (AED Mn)	375,320	2,888	0.8%	(1.8%)	12.0%

Benchmark Volatility**	Volatility Since:				
	Jan-2014	Jan-2013	Jan-2012	Jan-2011	Jan-2010
DFM General Index	33.7%	29.9%	26.9%	25.2%	24.5%

** Annualized Standard Deviation of Daily Returns

Trading Indicators	Today's Value	DTD Chg	DTD % Chg	Average Daily YTD-15	YTD-14
Volume (Mn Shares)	280	(15.8)	(5.3%)	502	807
Value Traded (AED Mn)	450	(120.7)	(21.1%)	799	1,898
No. of Trades	4,860	(661)	(12.0%)	7,558	11,215

YTD-2015 Top Movers and Most Active Stocks

YTD-15 Best Return Performers	Price (AED)	Value Traded (AED '000)	Volume ('000 Shrs)	YTD-15 Return
Amlak Finance	2.630	10,335,062	4,655,422	157.8%
Takaful Emarat	1.950	184,545	141,388	143.8%
Al-Madina for Finance & Investment	0.615	169,163	330,376	70.4%
Dubai Parks And Resorts	1.180	4,427,543	4,478,760	61.6%
Gulfa Mineral Water & Processing Industrie	3.500	501	148	38.9%

YTD-15 Worst Return Performers	Price (AED)	Value Traded (AED '000)	Volume ('000 Shrs)	YTD-15 Return
Gulf Navigation Holding	0.318	364,380	1,083,487	(181.1%)
Int'l Financial Advisors Co.	0.589	3,127	6,148	(30.7%)
Ajman Bank	1.970	250,950	108,631	(26.1%)
Dubai National Insurance & Reinsurance	2.630	3,084	980	(24.9%)
Arabtec Holding P.J.S.C.	2.510	14,513,074	5,145,084	(14.3%)

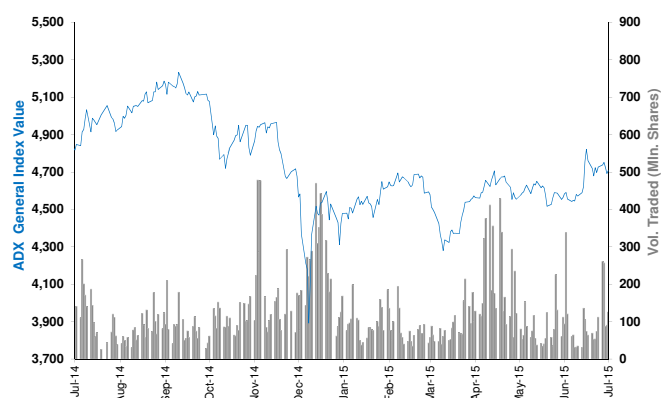
YTD-15 Most Active Stocks by Volume	Price (AED)	Value Traded (AED '000)	Volume ('000 Shrs)	YTD-15 Return
Gulf Finance House	0.711	9,108,412	18,471,542	(4.9%)
Union Properties	1.170	8,357,051	6,751,543	1.5%
Arabtec Holding P.J.S.C.	2.510	14,513,074	5,145,084	(14.3%)
Amlak Finance	2.630	10,335,062	4,655,422	157.8%
Deeyar Development	0.809	3,821,945	4,644,621	(4.8%)

YTD-15 Return: Is a total return which accounts in addition to the change in price the cash & share dividends announced during the year.

Abu Dhabi Securities Exchange Daily Report

July 12, 2015

Index Performance relative to Volume



Top 10 Stocks by Market Capitalization

	Market Cap. (AED Mn)	P/E (X)	ROE* (%)
1- Emirates Telecom. Co.	121,755	13.5	22.5%
2- First Gulf Bank	66,600	11.6	18.2%
3- National Bank Of Abu Dhabi	50,203	9.0	14.9%
4- Abu Dhabi Commercial Bank	42,527	9.8	17.1%
5- AL DAR Properties Co.	20,443	8.5	13.3%
6- Union National Bank	18,875	9.0	12.6%
7- Abu Dhabi Islamic Bank	15,631	8.7	12.7%
8- National Bank of Ras Al-Khaimah	12,739	8.6	19.8%
9- United Arab Bank	6,474	10.7	20.6%
10- National Bank of Umm Al-Qaiwain	5,208	16.3	8.7%
Subtotal	360,454	10.78	16.9%

* ROE is based on TTM 1Q-2015 Net Profit & Shareholders' Equity as of 31-March-15

Today's Top Movers and Most Active Stocks

Best Return Performers	Price (AED)	Daily Return	Value (AED)
Dana Gas	0.61	10.9%	45,332,688
Ras Al Khaimah Properties	0.65	3.2%	1,096,829
Sharjah Islamic Bank	1.69	2.4%	534,174
Ras Al Khaimah Cement Co.	0.88	2.3%	173,009
Waha Capital Co.	2.48	2.1%	920,955

Worst Return Performers	Price (AED)	Daily Return	Value (AED)
Ras Al Khaimah Poultry & Feeding Co.	1.60	(3.0%)	11,366
Abu Dhabi National Energy Co. (TAQA)	0.67	(2.9%)	182,965
Union National Bank	6.86	(2.0%)	88,035
National Bank of Ras Al-Khaimah	7.60	(1.3%)	4,610,086
Gulf Pharmaceutical Co.	2.53	(0.8%)	10,451

Most Active Stocks by Volume	Price (AED)	Daily Return	Volume ('000 Shrs)
Dana Gas	0.61	10.9%	78,839
Eshraq Properties Co.	0.78	1.3%	20,918
AL DAR Properties Co.	2.60	0.0%	12,572
Abu Dhabi Commercial Bank	7.60	2.0%	2,960
AGTHIA Group	7.29	1.3%	2,086

Source: KAMCO Research

Sectors' Return & Valuation Multiples

	Market Cap. (AED Mn)	MTD % Chg	P/E (X)	P/BV (X)	Dividend Yield (%)
ADX	461,986	0.1%	8.6	1.5	4.1%
Banks	237,625	(1.5%)	10.0	1.5	4.5%
Inv. & Financial Services	4,969	0.8%	0.3	1.3	11.4%
Real Estate	23,556	(3.8%)	12.1	1.0	0.7%
Energy	8,197	10.9%	NM	0.6	3.5%
Consumer Staples	5,837	(0.5%)	18.1	1.9	1.5%
Industrial	12,083	0.6%	23.4	0.8	4.7%
Insurance	8,890	(2.2%)	NM	0.5	4.3%
Telecommunication	150,730	3.0%	13.8	2.4	3.7%
Services	10,098	(0.7%)	13.6	0.6	3.6%

Sectors' MTD Return is based on the Change in market cap. and it might not conform with the benchmark return for each sector

Market Breadth	▲ 12 ▼ 5 = 48
----------------	---------------

Market Return, Volatility & Trading Indicators

Market Return	Closing Value	DTD Chg	DTD % Chg	MTD % Chg	YTD-15 % Chg
ADX General Index	4,707.94	15.65	0.3%	(0.3%)	4.0%
Market Cap (AED Mn)	461,986	1,194	0.3%	0.1%	(0.4%)

Benchmark Volatility**	Volatility Since:				
	Jan-2014	Jan-2013	Jan-2012	Jan-2011	Jan-2010
ADX General Index	19.6%	15.9%	13.5%	12.7%	12.1%

** Annualized Standard Deviation of Daily Returns

Trading Indicators	Today's Value	DTD Chg	DTD % Chg	Average Daily YTD-15	YTD-14
Volume (Mn Shares)	126	35.2	38.8%	110	316.6
Value Traded (AED Mn)	192	(26.6)	(12.1%)	231	810.2
No. of Trades	1,436	(85)	(5.6%)	1,816	4,309

YTD-2015 Top Movers and Most Active Stocks

YTD-15 Best Return Performers	Price (AED)	YTD-Val ('000 AED)	Volume ('000 Shrs)	YTD-15 Return
Emirates Telecom. Co.	14.00	3,379,236	282,225	40.6%
Abu Dhabi Ship Building Co.	2.55	33,475	13,880	34.2%
International Fish Farming Co.	8.00	1,437	231	33.6%
Gulf Medical Projects	2.56	433	180	28.0%
Fujairah Building Industrial Co.	1.72	674	476	27.5%

YTD-15 Worst Return Performers	Price (AED)	YTD-Val ('000 AED)	Volume ('000 Shrs)	YTD-15 Return
AL DAR Properties Co.	2.60	6,896,151	2,607,523	(100.0%)
Ooredoo	88.00	3,896	37	(38.7%)
Al Dhafra Insurance Co.	4.80	351	61	(37.7%)
National Marine Dredging Co.	4.41	1,797	358	(36.1%)
Abu Dhabi National Hotels	3.00	38,136	13,436	(25.0%)

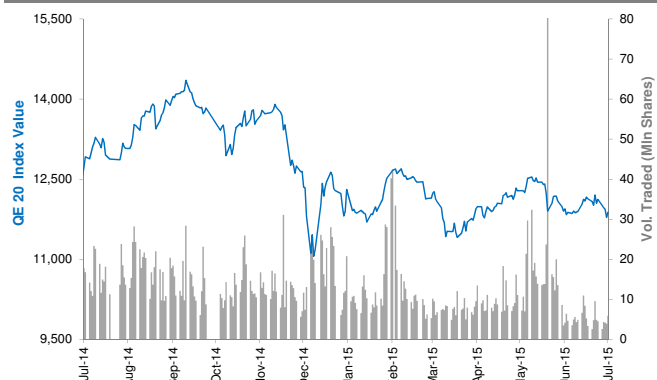
YTD-15 Most Active Stocks by Volume	Price (AED)	YTD-Val ('000 AED)	Volume ('000 Shrs)	YTD-15 Return
Eshraq Properties Co.	0.78	4,925,776	5,698,207	8.3%
AL DAR Properties Co.	2.60	6,896,151	2,607,523	(100.0%)
Dana Gas	0.61	1,084,879	2,223,948	22.0%
Ras Al Khaimah Properties	0.65	1,071,437	1,478,859	(12.2%)
Waha Capital Co.	2.48	1,526,048	537,535	(12.1%)

YTD-15 Return: Is a total return which accounts in addition to the change in price the cash & share dividends announced during the year.

Qatar Exchange Daily Report

July 12, 2015

Index Performance relative to Volume



Top 10 Stocks by Market Capitalization

	Market Cap. (QAR Mn)	P/E (X)	ROE* (%)
1- Qatar National Bank	130,150	12.2	20.0%
2- Industries Qatar	81,615	14.3	18.8%
3- Ezdan Holding Group Co.	46,419	32.6	4.8%
4- Masraf Al Rayan	34,275	16.5	19.7%
5- Mesaieed Petrochemical Holding Co.	30,164	20.8	10.9%
6- Ooredoo (formerly Q-Tel)	27,323	15.6	8.3%
7- Qatar Islamic Bank	25,260	15.2	14.0%
8- Qatar Electricity & Water Co.	24,365	15.4	25.4%
9- Barwa Real Estate Co.	19,612	3.4	32.1%
10- Qatar Insurance Co.	18,185	26.5	12.0%

Subtotal 437,367 11.92 19.2%

* ROE is based on TTM 1Q-2015 Net Profit & Shareholders' Equity as of 31-March-15

Today's Top Movers and Most Active Stocks

Best Return Performers	Price (QAR)	Daily Return	Value (QAR)
Industries Qatar	134.90	2.1%	32,937,448
Diala Brokerage & Inv. Hldg. Co.	27.10	1.9%	710,993
Masraf Al Rayan	45.70	1.6%	5,854,183
Ooredoo	85.30	1.5%	6,544,527
Qatar Insurance Co.	98.50	1.5%	2,529,097

Worst Return Performers	Price (QAR)	Daily Return	Value (QAR)
Doha Insurance Co.	25.20	(3.1%)	4,486
Medicare Group	182.00	(2.2%)	360,560
Qatar Islamic Insurance	81.90	(1.3%)	450,670
Qatari German Co. for Medical Devices	16.72	(1.0%)	5,822,656
Barwa Real Estate Co.	50.40	(1.0%)	129,116,012

Most Active Stocks by Volume	Price (QAR)	Daily Return	Volume (Shares)
Barwa Real Estate Co.	50.40	(1.0%)	2,577,972
Ezdan Holding Group Co.	17.50	1.4%	519,341
Qatari German Co. for Medical Devices	16.72	(1.0%)	344,637
Qatar Gas Transport Co.	22.00	0.0%	291,663
Vodafone Qatar	16.30	1.2%	260,960

Source: KAMCO Research

Sectors' Return & Valuation Multiples

	Market Cap. (QAR Mn)	MTD % Chg	P/E (X)	P/B (X)	Yield (%)
Qatar Exchange	631,454	(2.6%)	13.9	2.1	4.1%
Banking & Finance	252,803	(2.2%)	12.8	2.2	4.4%
Goods & Consumer Services	28,974	(0.9%)	15.4	2.5	4.3%
Industrial	179,913	(3.9%)	18.2	3.3	4.1%
Insurance	25,343	0.7%	13.5	1.9	2.9%
Real Estate	76,484	(3.2%)	9.7	1.3	3.1%
Telecom	41,103	(1.6%)	22.3	1.5	3.5%
Transport	26,834	(1.2%)	12.6	1.6	5.1%

Sectors' MTD Return is based on the Change in market cap. and it might not conform with the benchmark return for each sector

Market Breadth

▲ 22 ▼ 16 = 5

Market Return, Volatility & Trading Indicators

Market Return	Closing Value	DTD Chg	DTD % Chg	MTD % Chg	YTD-15 % Chg
QE 20 Index	11,880.82	93.71	0.8%	(2.6%)	(3.3%)
Market Cap (QAR Mn)	631,454	4,108	0.7%	(2.6%)	(6.7%)

Benchmark Volatility**	QE 20 Volatility Since:				
	Jan-2014	Jan-2013	Jan-2012	Jan-2011	Jan-2010
QE 20 Index	17.2%	16.2%	14.1%	14.2%	14.3%

** Annualized Standard Deviation of Daily Returns

Trading Indicators	Today's Value	DTD Chg	DTD % Chg	Average Daily YTD-15	YTD-14
--------------------	------------------	------------	--------------	-------------------------	--------

Volume ('000 Shares)	5,916	1,999	51.0%	11,395	19,924
Value Traded (QAR Mn)	299	101	51.1%	465	847
No. of Trades	2,616	(245)	(8.6%)	5,455	9,125

YTD-2015 Top Movers and Most Active Stocks

YTD-15 Best Return Performers	Price (QAR)	YTD Value (QAR 000's)	YTD Volume (Shares 000's)	YTD-15 Return
Qatari German Co. for Medical Devices	16.72	702,133	45,520	64.7%
Medicare Group	182.00	744,962	4,861	55.6%
Gulf Warehousing Co.	74.00	423,130	6,464	31.2%
Doha Insurance Co.	25.20	69,378	2,623	29.1%
Al Meera Consumer Goods Co.	255.10	689,940	3,060	27.6%

YTD-15 Worst Return Performers	Price (QAR)	YTD Value (QAR 000's)	YTD Volume (Shares 000's)	YTD-15 Return
Ooredoo	85.30	1,215,364	11,950	(31.2%)
Gulf International Services	76.90	4,938,916	54,452	(20.8%)
Industries Qatar	134.90	4,251,603	29,137	(19.7%)
Diala Brokerage & Inv. Hldg. Co.	27.10	574,496	14,618	(19.0%)
Mesaieed Petrochemical Holding Co.	24.01	793,571.2	29,254.43	(18.6%)

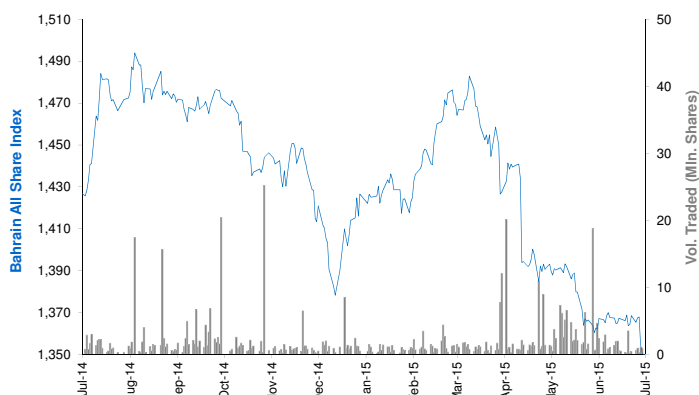
YTD-15 Most Active Stocks by Vol.	Price (QAR)	YTD Value (QAR 000's)	YTD Volume (Shares 000's)	YTD-15 Return
Ezdan Holding Group Co.	17.50	5,928,905	327,480	17.3%
Vodafone Qatar	16.30	3,421,943	197,068	(0.9%)
Barwa Real Estate Co.	50.40	7,647,022	160,052	20.3%
Mazaya Qatar R.E Development Co.	18.25	1,576,393	80,699	0.1%
Masraf Al Rayan	45.70	3,406,926	73,161	3.4%

YTD-15 Return: Is a total return which accounts in addition to the change in price the cash & share dividends announced during the year.

Bahrain Bourse Daily Report

July 12, 2015

Index Performance relative to Volume



Sectors' Return & Valuation Multiples

	Market Cap. (BHD Mn)	MTD % Chg	P/E (X)	P/B (X)	Yield (%)
Bahrain Bourse	7,734	(2.4%)	9.6	1.0	3.6%
Commercial Banks	3,301	(2.1%)	10.1	1.4	3.7%
Investment	2,271	(3.6%)	9.5	0.7	3.8%
Insurance	157	(2.9%)	12.1	0.8	4.4%
Service	1,070	(0.8%)	11.2	1.1	2.2%
Hotel & Tourism	206	(6.4%)	11.6	1.0	1.5%
Industrial	728	(0.4%)	6.2	0.8	5.4%

Sectors' MTD Return is based on the Change in market cap. and it might not conform with the benchmark return for each sector

Market Breadth

▲	2	▼	8	=	30
---	---	---	---	---	----

Top 10 Stocks by Market Capitalization

	Market Cap. (BHD Mn)	P/E (X)	ROE* (%)
1- Ahli United Bank (Price in USD)	1,607	8.38	15.8%
2- Arab Banking Corp. (Price in USD)	750	6.66	7.9%
3- National Bank of Bahrain	740	13.74	14.7%
4- Aluminum Bahrain	707	6.07	12.5%
5- Bahrain Telecommunications Co.	565	12.66	8.7%
6- Bank of Bahrain and Kuwait	461	9.05	14.7%
7- United Gulf Bank	325	NM	2.6%
8- Al Salam Bank	289	18.86	4.9%
9- Al Baraka Banking (Price in USD)	286	4.90	12.2%
10- Gulf Finance House (Price in USD)	262	53.70	1.8%
Subtotal	5,994	9.18	10.9%

* ROE is based on TTM 1Q2015 Net Profit & Shareholders' Equity as of 31-March-15

Today's Top Movers and Most Active Stocks

Best Return Performers	Price (BHD)	Daily Return	Value (BHD)
Al Salam Bank	0.135	0.7%	5,403
Ahli United Bank (USD)	0.710	0.7%	36,135

Worst Return Performers	Price (BHD)	Daily Return	Value (BHD)
Bahrain and Kuwait Insurance Co.	0.570	(9.5%)	14,250
Bah. Ship. Repairing and Engineering Co.	2.000	(4.8%)	4,500
Nass Corporation	0.164	(3.0%)	4,756
Arab Insurance Group (USD)	0.480	(2.0%)	10,993
Seef Properties	0.197	(1.5%)	34,883

Most Active Stocks by Volume	Price (BHD)	Daily Return	Volume (Shares)
Al-Ahlia Insurance Co.	0.330	0.0%	370,888
Seef Properties	0.197	(1.5%)	176,976
Bahrain Telecommunications Co.	0.340	0.0%	151,926
Ahli United Bank (USD)	0.710	0.7%	135,000
AlKhaleeji Commercial Bank	0.064	0.0%	133,914

Source: KAMCO Research

Market Return, Volatility & Trading Indicators

Market Return	Closing Value	DTD Chg	DTD % Chg	MTD % Chg	YTD-15 % Chg
Bahrain All Share Index	1,334.54	(1.11)	(0.1%)	(2.4%)	(6.5%)
Market Cap (BHD Mln)	7,733.56	(1.56)	(0.0%)	(2.4%)	(4.4%)

Benchmark Volatility**	Volatility Since:				
	Jan-2014	Jan-2013	Jan-2012	Jan-2011	Jan-2010
Bahrain All Share Index	7.28%	7.0%	6.8%	7.3%	7.8%

** Annualized Standard Deviation of Daily Returns

Trading Indicators	Today's Value	DTD Chg	DTD % Chg	Average Daily YTD-15	YTD-14
Volume ('000 Shares)	1,454	980	206.7%	1,983	6,576
Value Traded (BHD '000)	417	344	473.4%	443	1,530
No. of Trades	59	39	195.0%	49	86

YTD-2015 Top Movers and Most Active Stocks

YTD-15 Best Return Performers	Price (BHD)	YTD-Val (BHD '000)	YTD Vol (Shares)	YTD-15 Return
AlKhaleeji Commercial Bank	0.064	4,100	69,620,304	48.8%
Al Salam Bank	0.135	3,372	25,483,303	34.0%
BANADER Co. For Hotels	0.070	26	382,077	25.0%
Al-Ahlia Insurance Co.	0.330	977	2,965,587	22.2%
Gulf Finance House (USD)	0.220	72	1,049,789	21.2%

YTD-15 Worst Return Performers	Price (BHD)	YTD-Val (BHD '000)	YTD Vol (Shares)	YTD-15 Return
Takaful International Co.	0.100	2,502	26,054,619	(31.0%)
United Gulf Investment Corporation	0.100	10.0	99,114	(24.8%)
Bank of Bahrain and Kuwait	0.426	8,153	18,530,810	(17.6%)
ITHMAR Bank (USD)	0.135	839	13,814,039	(15.6%)
Al Baraka Banking Group (USD)	0.680	930	3,441,912	(13.8%)

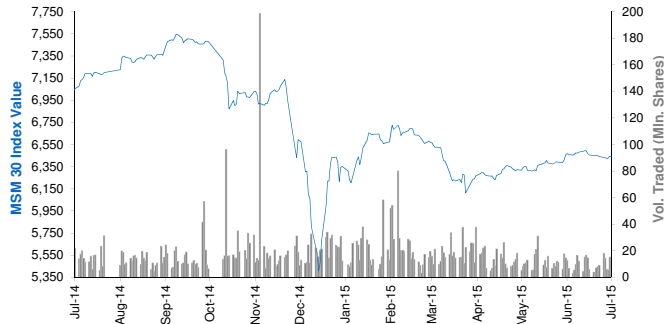
YTD-15 Most Active Stocks by Volume	Price (BHD)	YTD-Val (BHD '000)	YTD Vol (Shares)	YTD-15 Return
AlKhaleeji Commercial Bank	0.064	4,100	69,620,304	48.8%
Ahli United Bank (USD)	0.710	17,776	61,318,555	(4.3%)
Takaful International Co.	0.100	2,502	26,054,619	(31.0%)
Al Salam Bank	0.135	3,372	25,483,303	34.0%
Bank of Bahrain and Kuwait	0.426	8,153	18,530,810	(17.6%)

YTD-15 Return: Is a total return which accounts in addition to the change in price the cash & share dividends announced during the year.

Muscat Securities Market Daily Report

July 12, 2015

Index Performance relative to Volume



Sectors' Return & Valuation Multiples

	Market Cap. (OMR Mn)	MTD % Chg	P/E (X)	P/B (X)	Yield (%)
Muscat Securities Mkt	8,183	0.3%	10.73	1.51	3.8%
Financial	3,645	0.8%	8.93	1.08	3.5%
Industrial	1,111	(1.1%)	12.47	1.76	4.6%
Services	3,427	0.3%	12.90	2.43	3.9%

Sectors' MTD Return is based on the Change in market cap. and it might not conform with the benchmark return for each sector

Market Breadth	▲	9	▼	4	=	40
----------------	---	---	---	---	---	----

Top 10 Stocks by Market Capitalization

	Market Cap. (OMR Mn)	P/E (X)	ROE* (%)
1- Oman Telecom Co.	1,305	10.64	22.3%
2- Bank Muscat	1,288	7.72	13.2%
3- Ooredoo	503	12.65	21.5%
4- National Bank of Oman	448	8.51	14.9%
5- Bank Dhofar	431	10.26	12.7%
6- Raysut Cement	300	11.89	19.0%
7- Ahli Bank	299	11.66	15.5%
8- HSBC Bank Oman	266	20.63	4.3%
9- Sembcorp Salalah	243	33.96	9.6%
10- Bank Sohar	235	8.25	14.7%

Subtotal 5,525 10.17 15.0%

* ROE is based on TTM 1Q2015 Net Profit & Shareholders' Equity as of 31-March-15

Today's Top Movers and Most Active Stocks

Best Return Performers	Price (OMR)	Daily Return	Value (OMR)
Al Anwar Holding	0.218	7.4%	1,605,970
Ahli Bank	0.210	4.5%	28,350
National Gas Co.	0.366	4.0%	12,230
Al Suwadi Power	2.230	1.9%	52,910
Al Batinah power	0.211	1.9%	47,720

Worst Return Performers	Price (OMR)	Daily Return	Value (OMR)
Al Madina Investment company	0.073	(2.7%)	10,280
Oman Cement Co.	0.512	(2.3%)	26,660
Al Batinah Dev. Inv. Holding	0.120	(0.8%)	8,930
National Finance Co.	0.148	(0.7%)	3,090
Sembcorp Salalah	2.550	(0.6%)	2,590

Most Active Stocks by Volume	Price (OMR)	Daily Return	Volume (Shares)
Al Anwar Holding	0.218	7.4%	7,373,980
Bank Muscat	0.562	0.0%	1,195,585
Oman & Emirates Investment	0.121	0.8%	852,885
Al Anwar Ceramic Tiles Co.	0.406	0.0%	839,500
Bank Sohar	0.194	1.6%	409,633

Source: KAMCO Research

Market Return, Volatility & Trading Indicators

Market Return	Closing Value	DTD Chg	DTD % Chg	MTD % Chg	YTD-15 % Chg
MSM 30 Index	6,436.75	34.10	0.5%	0.2%	1.5%
Market Cap (OMR Mn)	8,183.49	28.80	0.4%	0.3%	5.8%

Benchmark Volatility**	Volatility Since:				
	Jan-2014	Jan-2013	Jan-2012	Jan-2011	Jan-2010
MSM 30 Index	13.9%	12.1%	11.0%	11.3%	10.9%

** Annualized Standard Deviation of Daily Returns

Trading Indicators	Today's Value	DTD Chg	DTD % Chg	Average Daily YTD-15	YTD-14
--------------------	------------------	------------	--------------	-------------------------	--------

Volume ('000 Shares)	13,377	6,345	90.2%	16,344	23,148
Value Traded (OMR '000)	3,910	1,989	104.3%	4,924	8,783
No. of Trades	830	526	173.0%	899	1,358

YTD-2015 Top Movers and Most Active Stocks

YTD-15 Best Return Performers	Price (OMR)	YTD-Value (OMR 000's)	YTD Vol. (Shares 000's)	YTD-15 Return
Gulf International Chemicals	0.232	9,370	40,168	52.6%
ONIC. Holding	0.480	7,050	17,341	51.9%
Al Anwar Holding	0.218	114,761	449,275	31.3%
Oman Investment & Finance Co.	0.209	18,763	80,215	29.3%
Al Suwadi Power	2.230	2,681	13,538	23.4%

YTD-15 Worst Return Performers	Price (OMR)	YTD-Value (OMR 000's)	YTD Volume (Shares 000's)	YTD-15 Return
Port Services Corporation	0.202	421	1,453	(42.9%)
Renaissance Services	0.279	13,633	33,690	(41.1%)
Al Jazeera Steel Products Co.	0.240	2,379	7,555	(28.6%)
National Gas Co.	0.366	2,382	5,152	(27.0%)
Galfar Engineering	0.240	2,379	7,555	(28.6%)

YTD-15 Most Active Stocks by Volume	Price (OMR)	YTD-Value (OMR 000's)	YTD Volume (Shares 000's)	YTD-15 Return
Al Anwar Holding	0.218	114,761	449,275	31.3%
Gulf Investment Services	0.141	31,299	193,178	(0.7%)
Oman & Emirates Investment	0.121	23,335	184,659	(1.6%)
Bank Muscat	0.562	101,884	182,649	1.4%
Global Financial Investment Co.	0.119	17,581	150,933	(2.5%)

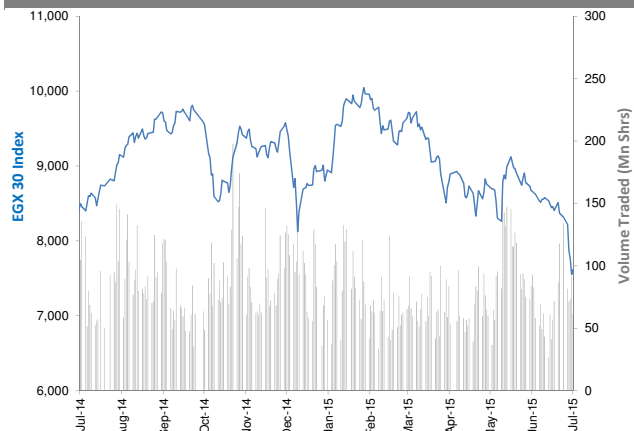
YTD-15 Return: Is a total return which accounts in addition to the change in price the cash & share dividends announced during the year.

The Egyptian Exchange Daily Report

(The bulletin covers the top 60 companies by Mkt. Cap out of 336 listed companies)

July 12, 2015

Index Performance relative to Volume



Sectors' Return & Valuation Multiples

	Market Cap. (EGP Mn)	MTD % Chg	P/E (X)	P/BV (X)	Yield (%)
The Egyptian Exchange	327,381	(6.1%)	16.3	1.4	2.3%
Banking & Finance	75,311	(5.1%)	9.7	2.1	2.1%
Basic Resources	13,778	(7.3%)	NM	1.5	4.2%
Chemical	20,179	(2.9%)	8.1	2.9	4.4%
Construction & Material	77,868	(3.7%)	17.2	0.7	3.1%
Financial Services	19,272	(8.6%)	37.6	0.9	1.7%
Food & Beverage	7,536	(1.1%)	20.8	2.1	3.1%
Healthcare & Pharma.	6,743	(0.0%)	21.1	3.5	0.0%
Ind. Goods, Services, Auto.	12,125	(8.0%)	19.8	1.5	1.8%
Media	476	(8.7%)	15.2	0.2	0.0%
Oil & Gas	3,315	(9.2%)	4.6	1.2	18.2%
Personal & Household	16,163	(4.4%)	13.5	1.4	0.0%
Real Estate	34,490	(11.7%)	20.4	1.0	0.9%
Telecommunication	36,152	(5.2%)	30.9	1.3	2.6%
Travel & Leisure	3,973	(4.9%)	21.2	1.1	0.0%

Sectors' MTD Return is based on the Change in market cap. and it might not conform with the benchmark return for each sector

Top 10 Stocks by Market Capitalization

	Market Cap. (EGP Mn)	P/E (X)	ROE* (%)
1-Orascom Construction Industries (OCI)	59,382	NM	NM
2-Commercial Int'l Bank (Egypt)	47,679	12.7	25.4%
3-Qatar National Bank AlAhli	17,076	7.4	19.5%
4-T M G Holding	16,055	23.5	2.6%
5-ABU Qir Fertilizers & Chemical ind. Co.	13,459	9.5	42.5%
6-Global Telecom Hldg.	12,222	NM	NM
7-MobiNil	10,700	NM	NM
8-EASTERN CO	10,250	11.3	18.8%
9-Elswedy Cables	9,833	24.4	7.6%
10-Egyptian Financial Group-Hermes Co.	6,882	12.8	5.9%
Subtotal	144,155	15.76	10.7%

*: ROE is based on Net Profit for the Period FY-14 & Shareholders' Equity as of 31-December-14

Today's Top Movers and Most Active Stocks

Best Return Performers	Last Price (EGP)	Daily Return
El Kahera Housing	10.30	9.6%
Orascom Hotels & Development	10.00	7.5%
Tourah cement Co.	15.79	7.3%
Egyptian Financial Group-Hermes Hldg Co.	12.00	7.0%
Commercial Int'l Bank (Egypt)	52.50	6.1%

Worst Return Performers	Last Price (EGP)	Daily Return
Alexandria Cement	7.79	(6.3%)
Misr Beni Suef Cement	38.00	(5.0%)
Suez Cement Co.	35.01	(2.8%)
Egyptian Co. for Mobile Services (MobiNil)	107.00	(2.6%)
EASTERN CO	204.99	(2.4%)

Most Active Stocks By Volume	Last Price (EGP)	Volume ('000 Shrs)
Amer Group Holding	0.96	24,292
Citadel Capital	1.77	5,223
Global Telecom Hldg. (Orascom Telecom)	2.33	4,086
Egyptian Resorts Co.	0.91	3,881
Palm Hills Developments	2.47	3,490

Source: KAMCO Research

Market Return, Volatility & Trading Indicators

Market Return	Closing Value	DTD Chg	DTD % Chg	MTD % Chg	YTD-15 % Chg
EGX 30 Index	7,617.39	66.41	0.9%	(9.0%)	(14.7%)
Market Cap (EGP Mn)	327,381	4,691	1.8%	(6.1%)	(16.8%)

Benchmark Volatility**	Since Jan-14	Since Jan-13	Since Jan-12	Since Jan-11	Since Jan-10
EGX 30 Index	21%	21%	24%	25%	26%

**: Annualized Standard Deviation of Daily Returns

Trading Indicators	Today's Value	DTD Chg	DTD % Chg	Average Daily YTD-15	YTD-14
Volume (Mn Shares)	61	(29.84)	(32.7%)	76	137
Value Traded (EGP Mn)	326	2.8	0.9%	384	576
No. of Trades	9,340	(2,381)	(20.3%)	11,892	16,816

Market Breadth	▲	35	▼	17	=	8
----------------	---	----	---	----	---	---

YTD-2015 Top Movers and Most Active Stocks

YTD-15 Best Return Performers	Last Price (EGP)	Volume ('000 Shrs)	YTD-15 Return
Misr Cement Co.	84.99	7,034	19.0%
Credit Agricole Egypt	23.48	22,254	18.7%
Qatar National Bank AlAhli	35.00	2,225	12.9%
Egyptian Int'l Pharmaceutical	84.99	2,441	8.3%
Commercial Int'l Bank (Egypt)	52.50	174,243	6.9%

YTD-15 Worst Return Performers	Last Price (EGP)	Volume ('000 Shrs)	YTD-15 Return
GB AUTO S.A.E	3.73	22,065	(88.0%)
Orascom Hotels & Development	10.00	16,190	(48.5%)
Asec Company for Mining - Ascom	6.46	3,995	(45.3%)
El Ezz Steel Rebars	7.65	103,324	(45.2%)
El Ahli Investment and Development	6.22	5,280	(42.5%)

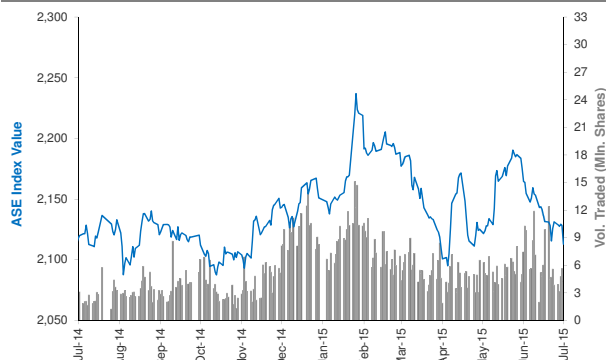
YTD-15 Most Active Stocks by Volume	Last Price (EGP)	Volume ('000 Shrs)	YTD-15 Return
Amer Group Holding	0.96	2,842,633	(25.00%)
Citadel Capital	1.77	1,392,291	(38.33%)
Global Telecom Hldg. (Orascom Telecom)	2.33	992,628	(41.31%)
Palm Hills Developments	2.47	851,963	(39.90%)
Egyptian Resorts Co.	0.91	801,882	(25.41%)

YTD-15 Return: Is a total return which accounts in addition to the change in price the cash & share dividends announced during the year.

Amman Stock Exchange Daily Report (1st Market)

July 12, 2015

Index Performance relative to Volume



Sectors' Return & Valuation Multiples

	Market Cap. (JD Mn)	MTD % Chg	P/E (X)	P/BV (X)	Yield (%)
Amman Stock Exchange	13,374	(0.5%)	11.7	0.9	5.3%
Banks	9,337	0.0%	8.9	0.8	5.2%
Insurance	95	0.0%	10.2	0.8	3.3%
Diversified Financial Services	190	0.1%	NM	0.8	1.1%
Real Estate	274	2.1%	NM	0.8	0.2%
Educational Services	332	(1.6%)	12.5	2.0	14.1%
Hotels and Tourism	137	(0.6%)	23.5	0.7	54.8%
Transportation	99	0.1%	NM	1.8	2.2%
Technology & Commun.	736	(3.6%)	18.4	2.0	5.7%
Media	14	(2.3%)	NM	0.4	0.0%
Utilities & Energy	705	1.0%	17.1	2.8	3.1%
Pharmaceutical & Medical Ind.	103	(1.1%)	NM	0.7	3.0%
Tobacco & Cigarettes	346	1.5%	13.1	3.4	5.8%
Mining & Extraction Industries	588	1.6%	31.0	0.6	0.2%
Engineering & Construction	99	(2.8%)	30.8	1.4	3.4%
Textiles, Leather & Cloth.	81	2.5%	25.3	0.9	5.4%

Sectors' MTD Return is based on the Change in market cap. and it might not conform with the benchmark return for each sector

Top 10 Stocks by Market Capitalization

	Market Cap. (JD Mn)	P/E (X)	ROE* (%)
1-ARAB BANK	3,890	6.8	7.4%
2-HOUSING BK TRD FIN	2,344	19.5	12.2%
3-JORDAN TELECOM	723	17.2	11.9%
4-JOR ISLAMIC BANK	510	11.3	16.0%
5-JOR PHOSPHATE MN	446	22.6	2.6%
6-JOR PETROLM REF	437	13.5	22.1%
7-BANK OF JORDAN	386	8.2	14.0%
8-JOR KUWAIT BANK	375	7.5	11.5%
9-CAIRO AMMAN BANK	374	8.4	15.3%
10-EQBAL INV.CO	281	10.6	39.1%

Subtotal	9,766	9.75	8.8%
-----------------	--------------	-------------	-------------

* ROE is based on FY-2014 Net Profit & Shareholders' Equity as of 31-December-14

Today's Top Movers and Most Active Stocks

Best Return Performers	Price (JD)	Daily Return
THE JORDAN PIPES MANUFACTURING	1.17	4.5%
IRBID DISTRICT ELECTRICITY	9.30	4.4%
REAL ESTATE DEVELOPMENT	0.25	4.2%
ALSHAMEKHA FOR REAL ESTATE & FINANCIAL INV.	1.53	4.1%
SPECIALIZED INVESTMENT COMPOUNDS	0.55	3.8%

Worst Return Performers	Price (JD)	Daily Return
ARABIAN STEEL PIPES MANUFACTURING	1.89	(7.4%)
CONTEMPO FOR HOUSING PROJECTS	1.28	(7.2%)
AL-ZARQA EDUCATIONAL AND INVESTMENT	3.00	(6.3%)
SALAM INTERNATIONL TRANSPORT & TRADING	0.45	(4.3%)
ARAB EAST INVESTMENT	0.50	(3.8%)

Most Active Stocks By Volume	Price (JD)	Volume ('000 Shrs)
AD-DULAYL INDUSTRIAL PARK & REAL ESTATE CO.	1.33	1,213
SPECIALIZED INVESTMENT COMPOUNDS	0.55	852
AL-AMAL FINANCIAL INVESTMENTS CO.	1.24	699
AL-TAJAMOUAT FOR CATERING AND HOUSING CO.	0.61	172
CENTURY INVESTMENT GROUP	2.61	172

Source: KAMCO Research

Market Return, Volatility & Trading Indicators

Market Return	Closing Value	DTD Chg	DTD % Chg	MTD % Chg	YTD-15 % Chg
ASE Index	2,112.97	(15.33)	(0.7%)	(0.1%)	(2.4%)
Market Cap (JD Mn)	13,374.25	(99.77)	(0.7%)	(0.5%)	(3.8%)

Benchmark Volatility**	Since Jan-2014	Since Jan-2013	Since Jan-2012
ASE Index	7.3%	7.9%	7.5%

** Annualized Standard Deviation of Daily Returns

Trading Indicators	Today's Value	DTD Chg	DTD % Chg	Average Daily YTD-15	YTD-14
Volume ('000 Shares)	4,245	(1,431)	(25.2%)	6,566	5,314
Value Traded (JD '000)	5,186	(1,636)	(24.0%)	7,227	6,785
No. of Trades	1,806	(17)	(0.9%)	2,412	2,420

Market Breadth	▲ 14 ▼ 27 = 78
-----------------------	-----------------------

YTD-2015 Top Movers and Most Active Stocks

YTD-15 Best Return Performers	Price (JD)	Volume ('000 Shrs)	YTD-15 Return
JORDAN DAIRY	7.00	87.3	246.5%
CENTURY INVESTMENT GROUP	2.61	26,372.4	65.2%
JORDAN PETROLEUM REFINERY	5.83	10,922.9	63.8%
AD-DULAYL INDUSTRIAL PARK & REAL ESTATE CO.	1.33	212,599.9	62.2%
JORDAN LOAN GUARANTEE CORP.	0.79	4,879.4	49.1%

YTD-15 Worst Return Performers	Price (JD)	Volume ('000 Shrs)	YTD-15 Return
M. E PHARMA. & CHMICAL IND. & MEDICAL APPLIANCE	0.55	15.8	(72.2%)
AL-TAJAMOUAT FOR CATERING AND HOUSING CO.	0.61	72,187.3	(52.3%)
TRANSPORT& INVESTMENT BARTER CO.	0.40	86,936.1	(45.2%)
JORDAN INDUSTRIAL RESOURCES	0.28	71,735.6	(42.9%)
JORDAN PRESS FOUNDATION/AL-RA'I	1.31	303.1	(35.1%)

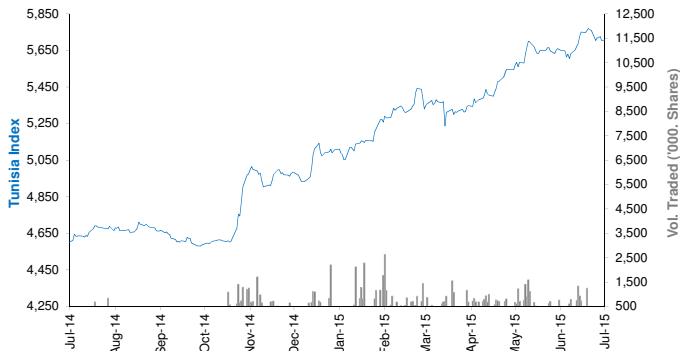
YTD-15 Most Active Stocks by Volume	Price (JD)	Volume ('000 Shrs)	YTD-15 Return
AD-DULAYL INDUSTRIAL PARK & REAL ESTATE CO.	1.33	212,600	62.2%
TRANSPORT& INVESTMENT BARTER CO.	0.40	86,936	(45.2%)
AL-TAJAMOUAT FOR CATERING AND HOUSING CO.	0.61	72,187	(52.3%)
JORDAN INDUSTRIAL RESOURCES	0.28	71,736	(42.9%)
SPECIALIZED INVESTMENT COMPOUNDS	0.55	66,514	(5.2%)

YTD-15 Return: Is a total return which accounts in addition to the change in price the cash & share dividends announced during the year.

Tunisia Stock Exchange Daily Report

July 12, 2015

Index Performance relative to Volume



Sectors' Return & Valuation Multiples

	Market Cap. (DT Mn)	MTD % Chg	P/E (X)	P/B (X)	Yield (%)
Tunis Stock Exchange	17,152	(1.0%)	14.11	1.52	2.6%
Banking	7,037	0.2%	17.18	1.57	3.1%
Insurance	812	(0.7%)	19.31	1.71	2.1%
Leasing	496	(0.8%)	11.28	1.22	4.3%
Financial Services	1,442	1.1%	15.92	2.19	1.1%
Industrial	1,169	(3.6%)	2.49	0.38	2.3%
Chemical Industry	637	(2.1%)	16.95	1.90	3.8%
Food & Beverage	3,306	(1.5%)	21.86	4.53	2.8%
Retailing	1,407	(4.9%)	NM	3.84	0.3%
Others	846	(1.2%)	NM	1.13	3.5%

Sectors' MTD Return is based on the Change in market cap. and it might not conform with the benchmark return for each sector

Top 10 Stocks by Market Capitalization

	Market Cap. (DT Mn)	P/E (X)	ROE* (%)
1-Société Frigorifique et Brasserie de Tunis	2,340	18.26	22.3%
2-Banque de Tunisie	1,593	18.17	14.0%
3-Banque Internationale Arabe de Tunisie	1,411	12.10	17.0%
4-Banque Attijari De Tunisie	1,073	14.42	17.7%
5-Poulina Group Holding	972	13.42	12.5%
6-Delice Holding	898	34.78	20.2%
7-Amen Bank	671	7.42	13.2%
8-Union Bancaire pour le Commerce et	557	19.18	9.9%
9-Arab Tunisian Bank	463	8.39	10.6%
10-Société Tunisienne d'Assurances et de Réassu	415	18.63	8.3%
Subtotal	10,394	14.80	14.7%

*: ROE is based on Net Profit for the Period FY-14 & Shareholders' Equity as of 31-December-14

Today's Top Movers and Most Active Stocks

Best Return Performers	Price (DT)	Daily Return
Banque de l'Habitat	21.70	3.3%
Assurances Salim	21.72	3.0%
Banque Internationale Arabe de Tunisie	83.00	2.5%
Société Essoukna	5.09	1.8%
Electrostar	5.27	1.7%

Worst Return Performers	Price (DT)	Daily Return
Société des Industries Pharm. de Tunisie	7.51	(4.5%)
TUNISAIR	0.87	(4.4%)
Société Immobilière Tuniso-Séoudienne	2.41	(2.8%)
Modern Leasing	4.52	(2.8%)
Arab Tunisian Lease	2.59	(2.3%)

Most Active Stocks By Volume	Price (DT)	Volume (Shares)
Société Tunisienne des Marchés de Gros	2.09	58,600
TUNISAIR	0.87	55,955
Hannibal Lease	7.70	49,002
Banque Nationale Agricole	12.79	39,968
City Cars	13.70	19,269

Source: KAMCO Research

Market Return, Volatility & Trading Indicators

Market Return	Closing Value	DTD Chg	DTD % Chg	MTD % Chg	YTD-15 % Chg
Tunisia Index	5,676.18	(7.40)	(0.1%)	(0.7%)	11.5%
Market Cap (DT Mln)	17,152	(11.57)	(0.1%)	(1.0%)	5.9%

Benchmark Volatility	Since Jan-14	Since Jan-13	Since Jan-12
Tunisia Index	6.8%	6.9%	7.0%

Trading Indicators	Today's Value	DTD Chg	DTD % Chg	Average Daily YTD-15	YTD-14
Volume ('000 Shares)	408	(21.1)	(4.9%)	673	855
Value Traded ('000 DT)	3,378	(960)	(22.1%)	6,105	5,495
No. of Trades	888	(315)	(26.2%)	1,498	1,564

Market Breadth	▲ 10	▼ 26	= 28
----------------	------	------	------

YTD-2015 Top Movers and Most Active Stocks

YTD-15 Best Return Performers	Price (DT)	Volume ('000 Shrs)	YTD-15 Return
Banque de l'Habitat	21.70	2,264.2	111.7%
Banque Nationale Agricole	12.79	5,092.2	68.3%
Société de Placement et de Dévelop. Ind. et Touristique	14.81	223.5	61.2%
Euro-Cycles	24.80	1,172.0	52.9%
Société Tunisienne d'Assurances et de Réassurances	180.00	92.9	23.9%

YTD-15 Worst Return Performers	Price (DT)	Volume ('000 Shrs)	YTD-15 Return
Société Tunis. d'Entreprises de Télécom.	1.85	713.626	(46.4%)
Société Tunisienne d'Equiptement	5.82	0.1	(44.1%)
Société Nouvelle Maison de la Ville de Tunis	15.36	528.2	(30.2%)
Elbene Industrie	3.02	33.5	(26.3%)
Ciments De Bizerte	4.80	210.3	(25.6%)

YTD-15 Most Active Stocks by Volume	Price (DT)	Volume ('000 Shrs)	YTD-15 Return
Société Moderne de Céramique	2.80	14,050.5	11.6%
Société Frigorifique et Brasserie de Tunis	26.00	7,114.2	15.6%
Société d'Articles Hygiéniques	10.70	6,510.4	2.2%
Banque Nationale Agricole	12.79	5,092.2	68.3%
TUNISAIR	0.87	4,000.8	(23.0%)

YTD-15 Return: Is a total return which accounts in addition to the change in price the cash & share dividends announced during the year.

Beirut Stock Exchange Daily Report

July 12, 2015

Index Performance relative to Volume



Sectors' Return & Valuation Multiples

	Market Cap. (USD Mn)	MTD % Chg	P/E (X)	P/B (X)	Yield (%)
Beirut Stock Exchange	11,471	(0.8%)	1.23	0.11	2.6%
Banking	9,240	(1.0%)	5.19	0.56	2.9%
Industrial	317	(1.8%)	5.97	0.87	8.7%
Trading	35	0.0%	0.01	0.00	0.0%
Real Estate & Construction	1,899	0.5%	10.39	1.02	0.0%

Sectors' MTD Return is based on the Change in market cap. and it might not conform with the benchmark return for each sector

Market Breadth

▲	5	▼	3	=	22
---	---	---	---	---	----

Top 10 Stocks by Market Capitalization

	Market Cap. (USD Mn)	P/E (X)	ROE* (%)
1- Bank Audi	2,402	6.08	10.3%
2- BLOM Bank	2,077	5.66	14.4%
3- Solidere A	1,161	6.35	9.8%
4- Byblos Bank	910	5.44	6.7%
5- BLOM Bank GDR	739	-	-
6- Solidere B	738	4.04	9.8%
7- Bank Audi GDR	721	-	-
8- Bank Of Beirut	310	2.85	11.2%
9- Holcim Liban	291	6.10	14.1%
10- BLOM Preferred 2011	203	-	-

*: ROE is based on Net Profit for the period ended December-13 and Shareholders' equity as of 31-December-13

Market Return, Volatility & Trading Indicators

Market Return	Closing Value	DTD Chg	DTD % Chg	MTD % Chg	YTD-15 % Chg
KAMCO BeirutSE TRW Index	1,118.78	2.81	0.3%	(0.8%)	2.4%
Market Cap (USD Mn)	11,471.422	28.91	0.3%	(0.8%)	2.2%

Benchmark Volatility	Since Jan-14	Since Jan-13	Since Jan-12
KAMCO BeirutSE TRW Index	7.7%	7.4%	7.1%

Trading Indicators	Today's Value	DTD Chg	DTD % Chg	Average Daily YTD-15	YTD-14
Volume ('000s shares)	70.39	42	152.2%	360	662
Value Traded ('000s USD)	1,105.87	745	206.8%	2,834	2,878

Today's Top Movers and Most Active Stocks

Best Return Performers	Price (USD)	Daily Return
Holcim Liban	14.90	4.9%
Bank Audi GDR	6.20	2.3%
Solidere A	11.61	1.6%
BLOM Bank GDR	10.00	0.7%
Bank Audi Preferred F	100.60	0.1%

Worst Return Performers	Price (USD)	Daily Return
BLOM Bank	9.66	(0.9%)
Solidere B	11.35	(0.6%)
Bank Audi Preferred G	100.20	(0.3%)

Most Active Stocks by Volume	Price (USD)	Volume (Shares)
Holcim Liban	14.90	32,335
Solidere A	11.61	22,966
BLOM Bank	9.66	5,433
BLOM Bank GDR	10.00	5,000
Bank Audi Preferred F	100.60	1,500

Source: KAMCO Research

YTD-2015 Top Movers and Most Active Stocks

YTD Best Return Performers	Price (USD)	YTD Volume (Shares)	YTD-15 Return
BLOM Bank	9.66	4,748,197	9.8%
BEMO Bank	1.90	215,084	8.6%
Solidere A	11.61	2,947,143	2.6%
BLOM Bank GDR	10.00	667,817	2.0%
Bank of Beirut Preferred Class J	25.35	25,325	1.4%

YTD Worst Return Performers	Price (USD)	YTD Volume (Shares)	YTD-15 Return
Ciments Blancs B	3.020	7,450	(19.5%)
Bank Audi GDR	6.200	6,937,651	(5.3%)
BLC Bank Preferred A	100.000	11,400	(2.9%)
Bank of Beirut Preferred Class H	25.500	161,552	(2.9%)
Bank of Beirut Preferred Class E	25.50	89,831	(2.9%)

YTD Most Active Stocks by Volume	Price (USD)	YTD Volume (Shares)	YTD-15 Return
Bank Audi	6.01	20,755,823	0.2%
Bank Audi GDR	6.20	6,937,651	(5.3%)
Byblos Bank	1.61	5,899,436	0.6%
BLOM Bank	9.66	4,748,197	9.8%
Solidere A	11.61	2,947,143	2.6%

YTD-15 Return: Is a total return which accounts in addition to the change in price the cash & share dividends announced during the year.

Casablanca Stock Exchange Daily Report

(The Bulletin covers the 41 Stocks listed on the Main Market)

July 12, 2015

Index Performance relative to Volume



Market Breadth

▲ 13 ▼ 12 = 16

Top 10 Stocks by Market Capitalization

	Market Cap. (MAD Mn)	P/E (X)	ROE* (%)
1-Itissalat Al-Maghrib	101,096	17.3	36.8%
2-Attijariwafa Bank	70,838	16.3	12.3%
3-Banque Marocaine Du Commerce Exterieur	38,944	20.0	12.1%
4-Banque Centrale Populaire	38,784	17.7	6.9%
5-Ciments Du Maroc	17,323	21.6	12.7%
6-CIE Generale Immobiliere	13,162	NM	1.8%
7-Wafa Assurances	13,160	16.9	19.9%
8-Holcim Maroc	9,430	15.6	30.7%
9-Douja Prom Addoha	9,135	9.0	9.1%
10-Banque Marocaine Due Commerce Et De L'Industries	8,326	22.9	4.3%
Subtotal	320,197	17.81	13.3%

*: ROE is based on Net Profit for the period FY-14 and Shareholders' equity as of 31-December-14

Today's Top Movers and Most Active Stocks

Best Return Performers	Price (MAD)	Daily Return
Alliances Developpement Immobilier	65.21	10.0%
Marocaine de l Industrie du Raffinage	149.85	4.1%
Managem	894.90	3.3%
Lafarge Ciments	1,878.00	3.2%
Auto Hall	92.96	2.1%

Worst Return Performers	Price (MAD)	Daily Return
Societe Metallurgique D'Imiter	2,689.00	(6.0%)
Societe Nationale d'Electrolyse et de Petrochimie	113.50	(5.3%)
Risma	201.00	(4.9%)
ENNAKL Automobiles	38.75	(3.3%)
Miniere Touissit	1,135.00	(2.7%)

Most Active Stocks By Volume	Price (MAD)	Volume (Shrs)
Alliances Developpement Immobilier	65.21	205,005
Douja Prom Addoha	29.00	119,733
Compagnie d'Assurances et de Reassurances ATLANTA	60.00	105,153
Itissalat Al-Maghrib	115.00	82,410
Comp Suc Maroc Et De Raff	173.55	26,020

Source: KAMCO Research

Sectors' Return & Valuation Multiples

	Market Cap. (MAD Mn)	MTD % Chg	P/E (X)	P/B (X)	Yield (%)
Casablanca Stock Exchange	428,835	1.1%	21.7	2.0	3.3%
Banking	169,945	(0.3%)	17.7	1.7	2.7%
Beverages	1,782	0.0%	17.0	3.2	0.0%
Chemicals	272	(6.6%)	NM	0.6	0.0%
Construction & Bldg. Material	62,642	0.7%	22.3	4.1	2.1%
Distributors	9,033	(0.2%)	24.1	2.3	0.0%
Electrical & Electronic Equipment	368	3.2%	NM	0.0	0.0%
Electricity	1,162	3.0%	1.5	0.3	0.0%
Food Producers & Processors	3,573	(2.3%)	4.3	0.7	16.1%
Holding Companies	2,279	(8.7%)	14.6	1.9	5.0%
Insurance	20,909	(3.2%)	16.1	2.5	5.1%
Investment & other Finance	3,393	(2.2%)	13.7	1.6	3.0%
Leisures & Hotel	1,584	(5.4%)	NM	1.7	0.0%
Materials, Software & Computer	722	(1.4%)	9.9	0.6	3.9%
Mining	14,305	(2.5%)	23.9	2.5	2.3%
Oil & Gas	8,737	0.9%	NM	1.0	0.0%
Real Estate	23,110	0.5%	29.1	1.3	0.0%
Telecommunications	101,096	6.7%	17.3	6.4	6.0%
Transport	520	(3.2%)	13.4	1.9	0.0%
Utilities	3,360	(6.3%)	11.9	1.9	0.0%
Forestry & Paper	40	(5.4%)	NM	1.9	0.0%

Sectors' MTD Return is based on the Change in market cap. and it might not conform with the benchmark return for each sector

Market Return, Volatility & Trading Indicators

Market Return	Closing Value	DTD Chg	DTD % Chg	MTD % Chg	YTD-15 % Chg
MASI Index	9,646.24	59.3	0.6%	0.7%	0.3%
MADEX Index	7,903.56	56.0	0.7%	0.8%	0.8%
Market Cap (MAD Mn)	428,835	2.5	0.6%	1.1%	(0.7%)

Benchmark Volatility**	YTD-14	Since Jan-13	Since Jan-12	Since Jan-11	Since Jan-10
MASI Index	7.9%	8.3%	8.8%	9.8%	9.8%
MADEX Index	9.7%	8.4%	8.7%	9.2%	10.1%

**: Annualized Standard Deviation of Daily Returns

Trading Indicators	Today's Value	DTD Chg	DTD % Chg	Average Daily YTD-15	YTD-14
Volume ('000 Shares)	593.94	153.08	34.7%	643	516
Value Traded (MAD Mn)	40.66	16.29	66.9%	48	70

YTD-2015 Top Movers and Most Active Stocks

YTD Best Return Performers	Price (MAD)	Volume (Shrs)	YTD-15 Return
Compagnie de Transport au Maroc	424.10	29,865	30.5%
Ciments Du Maroc	1,200.00	227,821	27.7%
Hightech Payment Systems SA	460.00	27,666	23.6%
TAQA MOROCCO	520.20	464,694	22.4%
Holcim Maroc	2,240.00	143,850	17.6%

YTD Worst Return Performers	Price (MAD)	Volume (Shrs)	YTD-15 Return
Alliances Developpement Immobilier	65.21	1,875,200	(76.5%)
Societe Nationale d'Electrolyse et de Petrochimie	113.50	73,703	(45.1%)
Med Paper	15.50	449,006	(44.3%)
Fenie Brossette	113.00	20,232	(41.5%)
Marocaine de l Industrie du Raffinage	149.85	404,518	(37.8%)

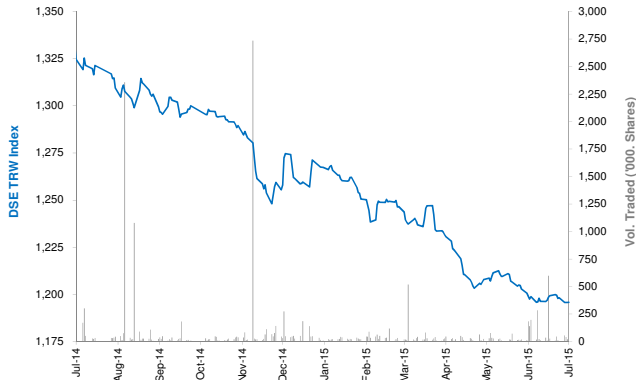
YTD Most Active Stocks by Volume	Price (MAD)	Volume ('000 Shrs)	YTD-15 Return
Douja Prom Addoha	29.00	33,362	(22.9%)
Itissalat Al-Maghrib	115.00	15,460	1.1%
Attijariwafa Bank	352.00	8,399	2.3%
Banque Marocaine Du Commerce Exterieur	217.00	6,246	(1.4%)
Comp Suc Maroc Et De Raff	173.55	5,580	4.0%

YTD-15 Return: accounts in addition to the chg in price the cash & share dividends announced during the year.

Damascus Securities Exchange Daily Report

July 12, 2015

Index Performance relative to Volume



Sectors' Return & Valuation Multiples

	Market Cap. (SRY Mn)	MTD % Chg	P/E (X)	P/B (X)	Yield (%)
Damascus SE	123,805	(0.3%)	4.9	0.9	0.3%
Banking	110,145	(0.3%)	4.66	0.83	0.0%
Services	1,470	0.0%	26.68	2.67	2.0%
Industrial	3,926	0.0%	6.62	1.58	0.0%
Insurance	7,724	0.3%	6.88	0.86	4.8%
Agricultural	539	0.0%	NM	3.81	0.0%

Sectors' MTD Return is based on the Change in market cap. and it might not conform with the benchmark return for each sector

Market Breadth

▲	1	▼	0	=	23
---	---	---	---	---	----

Top 10 Stocks by Market Capitalization

	Market Cap. (SRY Mn)	Trailing P/E (X)	ROE* (%)
1- Banque Bemo Saudi Fransi	16,950	7.3	20.6%
2- Qatar National Bank - Syria	13,653	1.6	23.5%
3- Bank Audi Syria	13,238	4.5	29.1%
4- Bank Of Syria And Overseas	9,400	4.7	25.7%
5- Arab Bank- Syria	9,301	NM	NM
6- The Int'l Bank For Trade & Finance	8,059	NM	0.1%
7- Syria International Islamic Bank	7,947	NM	NM
8- Byblos Bank Syria	7,650	7.0	13.7%
9- Al Baraka Bank - Syria	5,500	2.2	24.0%
10- Cham Bank	4,355	2.1	21.4%
Subtotal	91,698	4.84	17.5%

* ROE is based on FY-2014 Net Profit & Shareholders' Equity as of 31-December-14

Today's Top Movers & Most Active Stocks

Best Return Performers	Price (SRY)	Daily Return
Qatar National Bank Syria	91.02	0.0%

Worst Return Performers	Price (SRY)	Daily Return
No Losers		

Most Active Stocks by Volume	Price (SRY)	Volume (Shrs)
Qatar National Bank Syria	91.02	3,080
Al Baraka Bank - Syria	110.00	1,000
Alahliyah Vegetable Oil Company E.S.A	261.75	500

Source: KAMCO Research

Market Return, Volatility & Trading Indicators

Market Return	Closing Value	DTD Chg.	DTD % Chg.	MTD % Chg.	YTD-15 % Chg.
DSE Weighted Index	1,195.79	0.06	0.0%	(0.3%)	(5.9%)
Market Cap (SRY Mn)	123,805	6	0.0%	(0.3%)	(6.5%)

Benchmark Volatility	Since Jan-14	Since Jan-13	Since Jan-12
DSE Weighted Index	4.8%	10.0%	9.1%

** Annualized Standard Deviation of Daily Returns

Trading Indicators	Today's Value	DTD Chg.	DTD % Chg.	Average Daily YTD-15	YTD-14
Volume (Shrs)	4,580	(16,820)	(78.6%)	44,012	687
Value Traded ('000 SRY)	519	(1,428)	(73.4%)	6,127	14,148
No. of Trades	5	(6.0)	(54.5%)	24	46

YTD-2015 Top Movers & Most Active Stocks

YTD Best Return Performers	Price (SRY)	YTD Vol. (Shrs)	YTD-15 Return
Alahliyah Vegetable Oil Company E.S.A	261.75	55,636	19.0%
Bank Al Sharq	135.00	31,505	3.6%
Bank Of Syria And Overseas	235.00	223,140	2.6%
Arab Bank- Syria	184.18	106,419	1.2%
Byblos Bank Syria	125.00	42,718	0.4%

YTD Worst Return Performers	Price (SRY)	YTD Vol. (Shrs)	YTD-15 Return
Qatar National Bank Syria	91.02	816,661	(24.0%)
National Insurance Company	118.25	170,750	(17.5%)
Cham Bank	87.10	234,969	(16.5%)
Syria International Islamic Bank	93.50	836,142	(14.8%)
Al Baraka Bank - Syria	110.00	937,996	(12.6%)

YTD Most Active Stocks by Volume	Price (SRY)	YTD Vol. (Shrs)	YTD-15 Return
Al Baraka Bank - Syria	110.00	937,996	(12.6%)
Syria International Islamic Bank	93.50	836,142	(14.8%)
Qatar National Bank Syria	91.02	816,661	(24.0%)
Bank Audi Syria	231.25	574,966	0.0%
Cham Bank	87.10	234,969	(16.5%)

YTD-15 Return: Is a total return which accounts in addition to the change in price the cash & share dividends announced during the year.

Disclaimer & Important Disclosures

KAMCO is authorized and fully regulated by the Capital Markets Authority ("CMA") and partially regulated by the Central Bank of Kuwait ("CBK")

This document is provided for informational purposes only. Nothing contained in this document constitutes investment, an offer to invest, legal, tax or other advice or guidance and should be disregarded when considering or making investment decisions. In preparing this document, KAMCO did not take into account the investment objectives, financial situation and particular needs of any particular person. Accordingly, before acting on this document, investors should independently evaluate the investments and strategies referred to herein and make their own determination of whether it is appropriate in light of their own financial circumstances and objectives. The entire content of this document is subject to copyright with all rights reserved. This research and the information contained herein may not be reproduced, distributed or transmitted in Kuwait or in any other jurisdiction to any other person or incorporated in any way into another document or other material without our prior written consent.

Analyst Certification

Each of the analysts identified in this report certifies, with respect to the sector, companies or securities that the individual analyses, that (1) the views expressed in this report reflect his or her personal views about all of the subject companies and securities and (2) no part of his or her compensation was, is or will be directly or indirectly dependent on the specific recommendations or views expressed in this report.

KAMCO Ratings

KAMCO investment research is based on the analysis of regional and country economics, industries and company fundamentals. KAMCO company research reflects a long-term (12-month) target price for a company or stock. The ratings bands are:

- * **Outperform:** Target Price represents expected returns $\geq 10\%$ in the next 12 months
- * **Neutral:** Target Price represents expected returns between -10% and $+10\%$ in the next 12 months
- * **Underperform:** Target Price represents an expected return of $<-10\%$ in the next 12 months

In certain circumstances, ratings may differ from those implied by a fair value target using the criteria above. KAMCO policy is to maintain up-to-date fair value targets on the companies under its coverage, reflecting any material changes to the analyst's outlook on a company. Share price volatility may cause a stock to move outside the rating range implied by KAMCO's fair value target. Analysts may not necessarily change their ratings if this happens, but are expected to disclose the rationale behind their view to KAMCO clients.

Any terms and conditions proposed by you which are in addition to or which conflict with this Disclaimer are expressly rejected by KAMCO and shall be of no force or effect. The information contained in this document is based on current trade, statistical and other public information we consider reliable. We do not represent or warrant that such information is fair, accurate or complete and it should not be relied upon as such. KAMCO has no obligation to update, modify or amend this document or to otherwise notify a recipient thereof in the event that any opinion, forecast or estimate set forth herein, changes or subsequently becomes inaccurate. The publication is provided for informational uses only and is not intended for trading purposes. The information on publications does not give rise to any legally binding obligation and/or agreement, including without limitation any obligation to update such information. You shall be responsible for conducting your own investigation and analysis of the information contained or referred to in this document and of evaluating the merits and risks involved in the securities forming the subject matter of this or other such document. Moreover, the provision of certain data/information in the publication may be subject to the terms and conditions of other agreements to which KAMCO is a party.

Nothing in this document should be construed as a solicitation or offer, or recommendation, to acquire or dispose of any investment or to engage in any other transaction, or to provide any investment advice or service. This document is directed at Professional Clients and not Retail Clients within the meaning of CMA rules. Any other persons in receipt of this document must not rely upon or otherwise act upon it. Entities and individuals into whose possession this document comes are required to inform themselves about, and observe such restrictions and should not rely upon or otherwise act upon this document where it is unlawful to make to such person such an offer or invitation or recommendation without compliance with any authorization, registration or other legal requirements.

Risk Warnings

Any prices, valuations or forecasts are indicative and are not intended to predict actual results, which may differ substantially from those reflected. The value of an investment may go up as well as down. The value of and income from any investment may fluctuate from day to day as a result of changes in relevant economic markets (including, without limitation, foreseeable or unforeseeable changes in interest rates, foreign exchange rates, default rates, prepayment rates, political or financial conditions, etc.).

Past performance is not indicative of future results. Any opinions, estimates, valuations or projections (target prices and ratings in particular) are inherently imprecise and a matter of judgment. They are statements of opinion and not of fact, based on current expectations, estimates and projections, and rely on beliefs and assumptions. Actual outcomes and returns may differ materially from what is expressed or forecasted. There are no guarantees of future performance. Certain transactions, including those involving futures, options, and other derivatives, give rise to substantial risk and are not suitable for all investors. This document does not propose to identify or to suggest all of the risks (direct or indirect) which may be associated with the investments and strategies referred to herein.

Conflict of Interest

KAMCO and its affiliates provide full investment banking services, and they and their directors, officers and employees, may take positions which conflict with the views expressed in this document. Salespeople, traders, and other professionals of KAMCO may provide oral or written market commentary or trading strategies to our clients and our proprietary trading desks that reflect opinions that are contrary to the opinions expressed in this document. Our asset management area, our proprietary trading desks and investing businesses may make investment decisions that are inconsistent with the recommendations or views expressed in this document. KAMCO may have or seek investment banking or other business relationships for which it will receive compensation from the companies that are the subject of this document. Facts and views presented in this document have not been reviewed by, and may not reflect information known to, professionals in other KAMCO business areas, including investment banking personnel. United Gulf Bank, Bahrain owns majority of KAMCO's shareholding and this ownership may create, or may create the appearance of, conflicts of interest.

No Liability & Warranty

KAMCO makes neither implied nor expressed representations or warranties and, to the fullest extent permitted by applicable law, we hereby expressly disclaim any and all express, implied and statutory representations and warranties of any kind, including, without limitation, any warranty as to accuracy, timeliness, completeness, and fitness for a particular purpose and/or non-infringement. KAMCO will accept no liability in any event including (without limitation) your reliance on the information contained in this document, any negligence for any damages or loss of any kind, including (without limitation) direct, indirect, incidental, special or consequential damages, expenses or losses arising out of, or in connection with your use or inability to use this document, or in connection with any error, omission, defect, computer virus or system failure, or loss of any profit, goodwill or reputation, even if expressly advised of the possibility of such loss or damages, arising out of or in connection with your use of this document. We do not exclude our duties or liabilities under binding applicable law.



KAMCO Investment Company – K.S.C (Public)

Al-Shaheed Tower, Khalid Bin Al-Waleed Street- Sharq

P.O. BOX : 28873, Safat 13149, State of Kuwait

Tel: (+965) 1852626 Fax: (+965) 22492395

Email : Kamcoird@kamconline.com