

MENA Markets Daily Report

March 18, 2015

	Country	Benchmark		Index Value	DTD Change	YTD 2015	FY 2014
MENA Countries							
In this Report...	Kuwait	KSE Price Index	▼	6,444.14	(0.0%)	(1.4%)	(13.4%)
Kuwait 2	Kuwait	KSE Weighted Index	▼	439.44	(0.6%)	0.1%	(3.1%)
Saudi Arabia 3	Kuwait	KAMCO TRW Index	▼	2,758.50	(0.4%)	0.1%	(1.9%)
UAE - Dubai 4	Saudi Arabia	TADAWUL All Share Index	▼	9,303.13	(1.4%)	11.6%	(2.4%)
UAE - Abu Dhabi 5	UAE - Dubai	DFM General Index	▲	3,534.29	0.4%	(6.4%)	12.0%
Qatar 6	UAE - Abu Dhabi	ADX General Index	▼	4,330.63	(0.8%)	(4.4%)	5.6%
Bahrain 7	Qatar	QE 20 Index	▼	11,687.17	(0.6%)	(4.9%)	18.4%
Oman 8	Bahrain	Bahrain All Share	▼	1,468.12	(0.0%)	2.9%	14.2%
Egypt 9	Oman	MSM 30 Index	▼	6,222.88	(0.3%)	(1.9%)	(7.2%)
Jordan 10	Egypt	EGX 30	▲	9,561.33	0.3%	7.1%	31.6%
Tunisia 11	Jordan	ASE Index	▼	2,161.47	(0.9%)	(0.2%)	4.8%
Lebanon 12	Lebanon	KAMCO Beirut SE TRW Index	▼	1,162.39	(0.2%)	6.4%	3.5%
Morocco 13	Tunisia	Tunisia Index	▲	5,369.41	0.1%	5.5%	16.2%
Syria 14	Morocco	MASI	▲	10,426.40	0.0%	8.4%	5.6%
	Syria	DSE Weighted Index	▲	1,246.58	0.0%	(1.9%)	1.7%
Emerging Markets							
	China	SSE Composite Index	▲	3,502.85	1.6%	9.6%	52.9%
	Russia	RUSSIAN RTS INDEX (\$)	▲	822.76	1.2%	4.1%	(45.2%)
	India	SENSEX	▲	28,736.38	1.1%	4.2%	29.9%
	Brazil	BOVESPA Stock Index	▲	50,285.12	2.9%	0.6%	(2.9%)
	Mexico	BOLSA Index	▼	43,761.36	(0.6%)	1.4%	1.0%
	Korea	KOSPI Index	▲	2,029.91	2.1%	6.0%	(4.8%)
	Taiwan	TAIEX Index	▲	9,539.44	0.3%	3.7%	8.1%
Global Markets							
	World	MSCI World Index	▼	1,736.63	(0.2%)	1.6%	2.9%
	Asia	MSCI Asia Pacific	▲	144.86	0.7%	5.1%	(2.5%)
	Europe	DJ Stoxx 600	▼	397.33	(0.7%)	16.0%	4.4%
	Europe	FTSEurofirst 300	▼	1,583.85	(0.7%)	15.7%	4.0%
	Emerging Markets	MSCI EM Index	▲	949.06	0.9%	(0.8%)	(4.6%)
	U.S.A	S&P 500	▼	2,074.28	(0.3%)	0.7%	11.4%
	U.S.A	DJIA	▼	17,849.08	(0.7%)	0.1%	7.5%
	U.S.A	NASDAQ Composite	▲	4,937.44	0.2%	4.3%	13.4%
	UK	FTSE 100	▲	6,837.61	0.5%	4.1%	(2.7%)
	Germany	DAX	▼	11,980.85	(1.5%)	22.2%	2.7%
	Japan	NIKKEI 225	▲	19,437.00	1.0%	11.5%	7.1%
	Hong Kong	HANG SENG INDEX	▼	23,901.49	(0.2%)	2.4%	1.3%
Commodities							
	Oil	OPEC Crude	▼	49.46	(4.3%)	(4.9%)	(49.6%)
	Oil	Brent	▼	53.51	(0.8%)	(11.4%)	(45.6%)
	Oil	Kuwait	▼	47.94	(0.3%)	(9.0%)	(51.7%)
	Natural Gas	NYMEX Natural Gas (USD/MMBtu)	▲	2.86	5.1%	(1.6%)	(33.8%)
	Gold	Gold Spot \$/Oz	▼	1,148.67	(0.5%)	(3.2%)	(1.4%)

Investment Research Department
Kamcoird@kamconline.com

P.O.Box 28873, Safat 13149 Kuwait
Tel: (965) 1852626, Extn: 1153 / 1146
Fax: (965) 22492395

<http://www.kamconline.com>

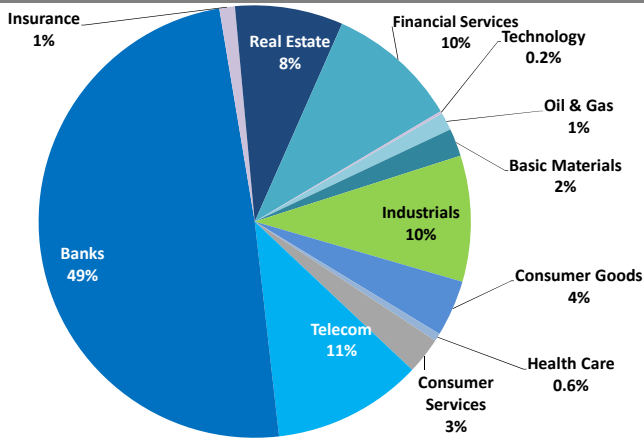
KAMCO Investment Company - K.S.C
(Public)

Source: Bloomberg & KAMCO Research

Kuwait Market Daily Report

March 18, 2015

Sector Weight by Market Cap



Top 10 Kuwaiti Companies by Market Capitalization

Company Name	Market Cap. (Mn KWD)	P/E (X)	ROE* (%)
1- National Bank of Kuwait	4,223.8	17.3	9.4%
2- Kuwait Finance House	3,292.2	28.2	6.6%
3- Zain	2,160.7	10.2	13.2%
4- Ahli United Bank - Bahrain	1,428.8	11.0	13.9%
5- Kuwait Food Co. (Americana)	1,157.8	20.6	15.9%
6- Kuwait Projects Co.	1,002.0	21.9	8.9%
7- Agility	934.9	18.9	5.6%
8- Burgan Bank	927.1	18.1	9.3%
9- Commercial Bank of Kuwait	903.6	22.0	7.1%
10- Ahli United Bank - Kuwait	902.0	19.6	14.3%
Total	16,933	17.08	9.8%

*: ROE is calculated based on TTM 9M-2014 net profit & shareholders' equity as of 30-Sep-14

Top Movers and Most Active Stocks

Today's Top % Gainers	Close (KWD)	Change (KWD)	Percent Change
Al Dar National Real Estate Co.	0.024	0.002	9.3%
Kuwait Cable Vision	0.029	0.002	7.4%
Ektitab Holding Co.	0.040	0.003	6.7%
Equipment Holding Co.	0.092	0.005	5.7%
MENA Real Estate Co.	0.032	0.002	4.9%



Today's Top % Losers	Close (KWD)	Change (KWD)	Percent Change
Gulf Finance House	0.019	(0.002)	(9.5%)
Kuwait Insurance Co.	0.275	(0.025)	(8.3%)
Securities Group	0.102	(0.008)	(7.3%)
Gulf Cable & Electrical Industries Co.	0.580	(0.040)	(6.5%)
Boubyan International Industries Holding Co.	0.060	(0.004)	(6.3%)

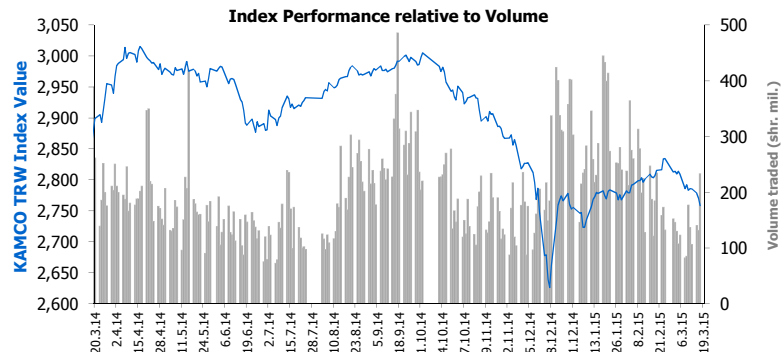
Today's Most Active by Volume	Close (KWD)	Change (KWD)	Volume (Shares)
Gulf Finance House	0.019	(0.002)	121,264,331
First Investment Co.	0.089	0.002	19,898,991
Al-Madina for Finance & Investment Co.	0.036	0.001	7,779,972
Investors Holding Group Co.	0.031	0.001	7,551,814
The Commercial Real Estate Co.	0.096	0.000	6,680,675

Source: KAMCO Research

Market Capitalization - Sectors' Return

	Market Cap. (KWD Mn)	DTD %	MTD %	YTD %
Kuwaiti Stock Exchange	29,741.4	(0.6%)	(4.0%)	0.1%
Oil & Gas	394.3	0.8%	(3.1%)	0.8%
Basic Materials	614.1	0.4%	(0.7%)	(5.4%)
Industrials	2,807.5	(0.6%)	(0.9%)	2.9%
Consumer Goods	1,246.2	(0.7%)	(3.3%)	2.4%
Health Care	174.2	0.0%	(0.4%)	(5.3%)
Consumer Services	819.2	(0.4%)	(1.5%)	5.4%
Telecommunications	3,327.1	(1.7%)	(11.7%)	(0.6%)
Banks	14,620.7	(0.6%)	(3.4%)	0.2%
Insurance	343.7	(1.4%)	(1.9%)	(3.7%)
Real Estate	2,404.1	(0.1%)	(1.8%)	0.5%
Financial Services	2,932.7	(0.2%)	(3.7%)	(2.7%)
Technology	57.6	(0.0%)	2.1%	2.4%

Market Breadth		53		48	=	92
Benchmark Return	Closing	DTD	DTD	MTD		YTD
	Value	Chg	% Chg	% Chg		% Chg
KAMCO TRWI	2,758.50	(11.5)	(0.4%)	(2.7%)		0.1%
KSE Price Index	6,444.14	(2.2)	(0.0%)	(2.4%)		(1.4%)
KSE Weighted Index	439.44	(2.8)	(0.6%)	(4.0%)		0.1%
Kuwait 15 Index	1,063.49	(9.7)	(0.9%)	(4.8%)		0.3%
Market Cap (KWD Mn)	29,741	(187.0)	(0.6%)	(4.0%)		0.1%



Market Trading Data and Volatility

Trading Indicators	Today's Value	DTD Chg	DTD % Chg	Average Daily YTD 2015	YTD 2014
Volume (Shrs Mn)	233.1	131.4	77.4%	222.7	313.9
Value Traded (KWD Mn)	16.9	15.9	6.2%	23.4	31.8
No. of Trades	3,999	3,543.0	12.9%	5,406	6,131

Market Volatility**	Volatility Since January:				
	2014	2013	2012	2011	2010
KAMCO TRW Index	6.9%	6.2%	5.9%	7.0%	7.7%
KSE Price Index	10.1%	11.0%	10.1%	9.8%	9.7%
KSE Weighted Index	10.1%	9.0%	8.6%	9.9%	10.7%

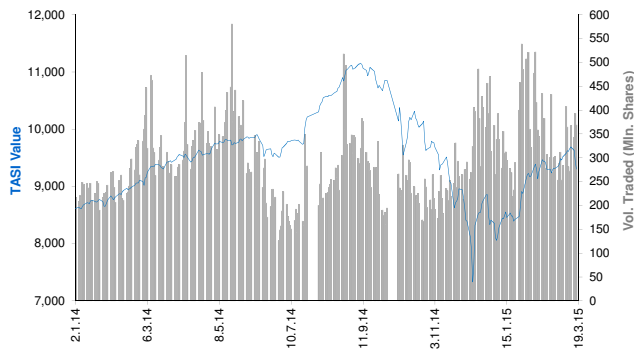
** Annualized Standard Deviation of Daily Returns

Today's Most Active by Value	Close (KWD)	Change (KWD)	Value (KWD)
Gulf Finance House	0.019	(0.002)	2,274,570
First Investment Co.	0.089	0.002	1,747,781
Kuwait Telecommunication Co.	0.850	0.010	1,652,926
National Bank of Kuwait	0.880	(0.010)	1,647,846
Kuwait Finance House	0.760	(0.010)	1,060,373

Saudi Tadawul Daily Report

March 18, 2015

Index Performance relative to Volume



Top 10 Stocks by Market Capitalization

	Market Cap. (SAR Mn)	P/E (X)	ROE* (%)
1- Saudi Basic Industries Corp	261,420	10.4	15.9%
2- National Commercial Bank	130,120	8.9	32.9%
3- Saudi Telecom	129,300	10.6	20.2%
4- Al-Rajhi Bank	99,613	14.5	17.0%
5- Kingdom Holding Co.	86,829	NM	2.5%
6- Jabal Omar Development Company	77,623	NM	NM
7- Saudi Electricity Co.	71,249	15.0	7.7%
8- Samba Financial Group	58,056	12.1	12.6%
9- Riyadh Bank	52,860	12.2	12.4%
10- Saudi Arabia Fertilizers Co.	51,060	16.0	43.7%

Subtotal	1,018,130	13.25	15.8%
----------	-----------	-------	-------

* ROE is based on TTM 9M-2014 Net Profit & Shareholders' Equity as of 30-September-14

Today's Top Movers and Most Active Stocks

Best Return Performers	Price (SAR)	Daily Return	Value (SAR 000's)
MetLife AIG ANB Co-op. Insurance Co.	64.75	9.6%	95,294
Knowledge Economic City	27.36	4.9%	697,048
Aljazira Takaful Taawuni Co.	61.63	3.8%	112,688
Saudi Fransi Cooperative Ins. Co.	58.70	3.3%	87,843
Rabigh Refining and Petrochemical Co.	23.39	3.3%	276,219

Worst Return Performers	Price (SAR)	Daily Return	Value (SAR 000's)
Al-Rajhi Co. for Cooperative Ins.	27.09	(7.5%)	32,857
Wataniya Insurance Co.	100.71	(4.1%)	97,921
Saudi Basic Industries Corp	87.14	(4.1%)	1,019,722
ACE Arabia Cooperative Insurance Co.	79.19	(4.0%)	83,626
SABB	35.36	(3.6%)	24,911

Most Active Stocks By Volume	Price (SAR)	Daily Return	Volume ('000 Shrs)
Dar Al Arkan Real Estate Dev. Co.	9.79	0.5%	77,211
Alinma Bank	23.19	(1.1%)	36,238
Knowledge Economic City	27.36	4.9%	25,562
Saudi Kayan	12.09	(2.2%)	18,681
Emaar The Economic City	14.83	2.0%	17,204

Source: KAMCO Research

Sectors' Return & Valuation Multiples

	Market Cap. (SAR Mn)	MTD Return	P/E (X)	P/BV (X)	Yield (%)
Saudi Stock Exchange	1,996,736	(1.7%)	15.9	2.2	3.0%
Banks & Financial	556,991	(5.0%)	12.0	2.0	1.8%
Petrochemical Industries	447,553	(3.2%)	11.8	1.8	5.2%
Cement	91,560	(1.5%)	15.7	3.0	6.0%
Retail	91,649	0.2%	31.6	6.8	1.5%
Energy & Utilities	73,688	(10.2%)	15.1	1.2	4.1%
Agric. & Food Ind.	129,082	(0.5%)	26.1	4.6	1.9%
Telecom	166,703	(0.8%)	12.3	1.8	4.9%
Insurance	48,642	3.0%	NM	2.9	0.1%
Multi-Inv.	94,470	10.5%	NM	2.5	2.1%
Indust. Inv.	76,274	(0.1%)	30.2	2.2	1.2%
Bldg. & Const.	29,042	(0.7%)	37.6	2.6	2.3%
Real Estate Dev.	142,257	11.3%	51.0	2.7	0.6%
Transport	20,735	5.1%	18.4	2.0	2.2%
Media & Publishing	3,988	(2.6%)	NM	1.8	0.0%
Hotel & Tourism	24,101	(14.0%)	15.0	4.6	3.1%

Sectors' MTD Return is based on the Change in market cap. and it might not conform with the benchmark return for each sector

Market Return, Volatility & Trading Indicators

Market Return	Closing Value	DTD Chg	DTD % Chg	MTD % Chg	YTD-15 % Chg
Tadawul All Share Index	9,303.13	(135.1)	(1.4%)	(0.1%)	11.6%
Market Cap (SAR Mn)	1,996,736	(27,812.3)	(1.4%)	(1.7%)	10.0%

Benchmark Volatility**	Since Jan-14	Since Jan-13	Since Jan-12	Since Jan-11	Since Jan-10
Tadawul All Share Index	20.3%	16.7%	15.6%	16.7%	16.5%

** Annualized Standard Deviation of Daily Returns

Trading Indicators	Today's Value	DTD Chg	DTD % Chg	Average Daily YTD-15	YTD-14
Volume (Mn Shares)	369	(24)	(6.2%)	351	268
Value Traded (SAR Mn)	10,389	(1,396)	(11.8%)	9,005	7,255
No. of Trades	165,775	(29,725)	(15.2%)	150,741	121,244

Market Breadth	38	124	5
----------------	----	-----	---

YTD-2015 Top Movers and Most Active Stocks

YTD-15 Best Return Performers	Price (SAR)	YTD Val (SAR Mn)	YTD Vol ('000 Shrs)	YTD-15 Return
Saudi United Cooperative Ins. Co.	22.93	1,477	60,713	155.0%
Saudi Fransi Cooperative Ins. Co.	58.70	1,559	34,246	66.9%
Knowledge Economic City	27.36	4,953	222,833	61.4%
Buruj Cooperative Insurance Co.	53.57	1,781	36,764	61.1%
The Co for Cooperative Ins.	79.91	3,632	51,856	59.5%

YTD-15 Worst Return Performers	Price (SAR)	YTD Val (SAR Mn)	YTD Vol ('000 Shrs)	YTD-15 Return
AXA Cooperative Insurance Co.	21.40	1,870	62,354	(39.4%)
SABB	35.36	886	17,229	(39.1%)
Al-Rajhi Co. for Cooperative Ins.	27.09	1,162	28,621	(25.3%)
Middle East Specialised Cables	16.57	8,298	407,008	(24.4%)
Union Cooperative Assurance Co.	16.10	1,462	74,883	(20.2%)

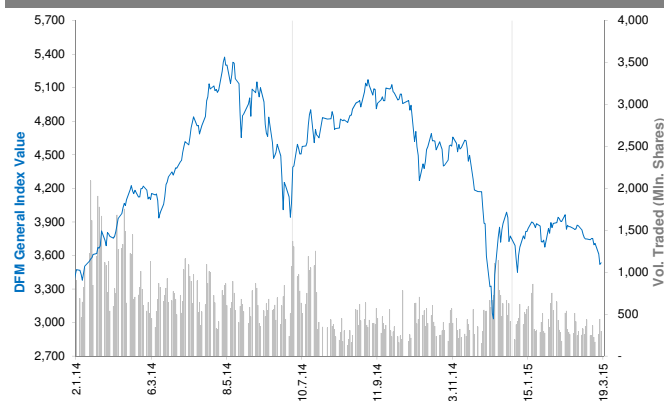
YTD-15 Most Active Stocks by Volume	Price (SAR)	YTD Val (SAR Mn)	YTD Vol ('000 Shrs)	YTD-15 Return
Dar Al Arkan Real Estate Dev. Co.	9.79	30,792	3,204,665	20.2%
Alinma Bank	23.19	44,080	1,996,545	14.3%
ZAIN KSA	11.54	9,044	1,152,846	(3.2%)
Saudi Kayan	12.09	14,436	1,122,791	10.0%
Saudi Arabian Mining Co.	42.77	27,183	713,441	39.7%

YTD-15 Return: Is a total return which accounts in addition to the change in price the cash & share dividends announced during the year.

Dubai Financial Market Daily Report

March 18, 2015

Index Performance relative to Volume



Top 10 Stocks by Market Capitalization

	Market Cap (AED Mn)	P/E (X)	ROE* (%)
1- Emirates NBD	49,631	10.8	10.0%
2- EMAAR Properties	47,254	14.8	7.7%
3- EMAAR MALLS GROUP	35,529	17.4	15.2%
4- Emirates Integrated Telecom. (DU)	23,314	10.8	29.6%
5- Dubai Islamic Bank	22,932	9.4	16.1%
6- Mashreq Bank	20,289	9.0	14.5%
7- Commercial Bank of Dubai	15,247	11.9	15.2%
8- Dubai Financial Market	13,200	18.2	8.6%
9- Arabtec Holding P.J.S.C.	12,043	27.9	7.4%
10- Dubai Investment	8,940	6.9	13.2%
Subtotal	265,674	11.76	12.6%

* ROE is based on TTM 9M-2014 Net Profit & Shareholders' Equity as of 30-September-14

Today's Top Movers and Most Active Stocks

Best Return Performers	Price (AED)	Daily Return	Value Traded (AED)
Gulf General Investment Co.	0.720	13.0%	8,750,552
Takaful Emarat	1.300	7.4%	584,924
Al-Madina for Finance & Investment	0.418	4.2%	2,094,221
Al Salam Bank - Sudan	2.000	4.2%	1,000
Drake and Scull International	0.704	2.5%	10,746,197

Worst Return Performers	Price (AED)	Daily Return	Value Traded (AED)
Int'l Financial Advisors Co.	0.470	(8.7%)	44,500
Takaful House	0.652	(6.7%)	163,640
Ektitab Holding Co.	0.515	(4.5%)	488,408
Dubai Financial Market	1.650	(3.5%)	24,766,632
Gulf Finance House	0.241	(3.2%)	32,181,666

Most Active Stocks by Volume	Price (AED)	Daily Return	Volume Traded ('000 Shrs)
Gulf Finance House	0.241	(3.2%)	130,915
Dubai Parks And Resorts	0.800	1.9%	24,060
EMAAR Properties	6.600	(0.2%)	17,806
Drake and Scull International	0.704	2.5%	15,506
Dubai Financial Market	1.650	(3.5%)	14,814

Source: KAMCO Research

Sectors' Return & Valuation Multiples

	Market Cap. (AED Mn)	MTD % Chg	P/E (X)	P/BV (X)	Yield (%)
Dubai Financial Market	333,358	(7.9%)	11.9	1.3	2.2%
Banking	120,330	(9.3%)	10.8	1.2	2.6%
Consumer Staples	8,277	5.5%	67.5	3.4	0.7%
Investment & Financial	25,425	(11.4%)	14.4	1.1	2.6%
Insurance	6,021	(1.0%)	6.2	0.6	2.3%
Industrial	4,290	(2.2%)	19.2	0.5	2.1%
Real Estate & Construction	115,950	(9.1%)	NM	1.5	0.8%
Telecommunication	23,593	(0.0%)	11.3	2.9	6.0%
Transportation	26,640	(5.4%)	21.8	1.4	3.3%
Services	2,833	1.6%	2.4	0.6	1.2%

Sectors' MTD Return is based on the Change in market cap. and it might not conform with the benchmark return for each sector

Market Breadth	20	11	=	29
-----------------------	-----------	-----------	----------	-----------

Market Return, Volatility & Trading Indicators

Market Return	Closing Value	DTD Chg	DTD % Chg	MTD % Chg	YTD-15 % Chg
DFM General Index	3,534.29	14.74	0.4%	(8.5%)	(6.4%)
Market Cap (AED Mn)	333,358	1,234	0.4%	(7.9%)	(0.5%)

Benchmark Volatility**	Volatility Since:				
	Jan-2014	Jan-2013	Jan-2012	Jan-2011	Jan-2010
DFM General Index	36.4%	30.8%	27.2%	25.3%	24.6%

** Annualized Standard Deviation of Daily Returns

Trading Indicators	Today's Value	DTD Chg	DTD % Chg	Average Daily YTD-15	YTD-14
Volume (Mn Shares)	297	(142.0)	(32.3%)	394	990
Value Traded (AED Mn)	372	(104.9)	(22.0%)	640	1,809
No. of Trades	4,814	(1,134)	(19.1%)	6,628	10,922

YTD-2015 Top Movers and Most Active Stocks

YTD-15 Best Return Performers	Price (AED)	Value Traded (AED '000)	Volume ('000 Shrs)	YTD-15 Return
Takaful Emarat	1.300	124,601	105,669	62.5%
Arab Insurance Group	2.020	642	329	30.3%
United Kaipara Dairies Co.	650.000	4	0.01	25.0%
Al-Madina for Finance & Investment	0.418	51,656	131,934.981	15.8%
Gulfa Mineral Water & Processing Industrie	2.890	40	14	14.7%

YTD-15 Worst Return Performers	Price (AED)	Value Traded (AED '000)	Volume ('000 Shrs)	YTD-15 Return
Int'l Financial Advisors Co.	0.470	1,974	3,797	(44.7%)
Gulf Navigation Holding	0.260	111,293	315,175	(33.7%)
Ajman Bank	2.020	57,824	22,647	(27.9%)
Drake and Scull International	0.704	379,999	451,960	(21.3%)
Deyaar Development	0.675	1,306,146	1,604,066	(20.6%)

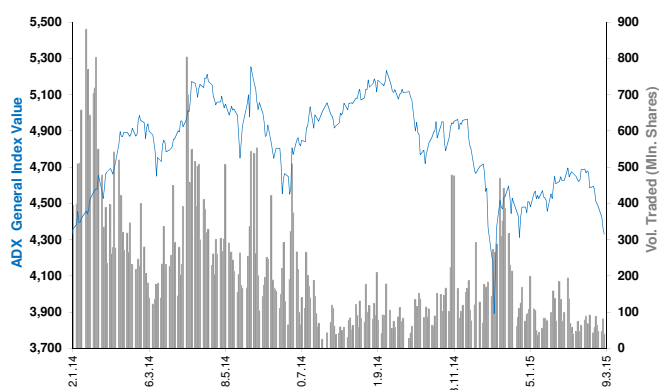
YTD-15 Most Active Stocks by Volume	Price (AED)	Value Traded (AED '000)	Volume ('000 Shrs)	YTD-15 Return
Gulf Finance House	0.241	1,852,296	6,107,139	(19.4%)
Arabtec Holding P.J.S.C.	2.740	6,392,808	2,102,161	(6.5%)
Union Properties	1.000	2,392,526	2,057,626	(17.4%)
Deyaar Development	0.675	1,306,146	1,604,066	(20.6%)
DAMAC Properties Dubai	2.280	3,063,230	1,139,038	(18.3%)

YTD-15 Return: Is a total return which accounts in addition to the change in price the cash & share dividends announced during the year.

Abu Dhabi Securities Exchange Daily Report

March 18, 2015

Index Performance relative to Volume



Top 10 Stocks by Market Capitalization

	Market Cap. (AED Mn)	P/E (X)	ROE* (%)
1- Emirates Telecom. Co.	96,850	11.8	20.1%
2- First Gulf Bank	60,750	11.1	16.9%
3- National Bank Of Abu Dhabi	59,201	11.2	14.2%
4- Abu Dhabi Commercial Bank	34,133	8.9	14.9%
5- AL DAR Properties Co.	17,612	8.9	11.3%
6- Union National Bank	15,656	8.3	11.5%
7- Abu Dhabi Islamic Bank	14,761	8.8	12.5%
8- National Bank of Ras Al-Khaimah	13,695	10.0	20.2%
9- United Arab Bank	8,021	12.6	22.4%
10- National Bank of Fujairah	5,929	12.5	14.7%
Subtotal	326,608	10.60	15.7%

* ROE is based on TTM 9M-2014 Net Profit & Shareholders' Equity as of 30-September-14

Today's Top Movers and Most Active Stocks

Best Return Performers	Price (AED)	Daily Return	Value (AED)
Sudan Telecom. Co.	0.78	4.0%	413,453
Ras Al Khaimah Properties	0.74	2.8%	1,354,778
Arkan Building Materials Co.	1.26	2.4%	536,401
AL DAR Properties Co.	2.24	1.4%	42,398,516
AGTHIA Group	7.10	1.0%	781,044

Worst Return Performers	Price (AED)	Daily Return	Value (AED)
Sharjah Cement & Industrial Dev. Co.	1.12	(5.1%)	486,600
FOODCO Holding Co.	4.50	(4.3%)	11,100
Methaq Takaful Insurance Co.	0.68	(4.2%)	20,400
Ras Al Khaimah Cement Co.	0.85	(3.4%)	99,000
Abu Dhabi Commercial Bank	6.10	(2.9%)	10,804,665

Most Active Stocks by Volume	Price (AED)	Daily Return	Volume ('000 Shrs)
AL DAR Properties Co.	2.24	1.4%	18,835
Eshraq Properties Co.	0.76	0.0%	5,512
Dana Gas	0.42	(2.3%)	3,168
Waha Capital Co.	2.76	(1.4%)	2,571
Ras Al Khaimah Properties	0.74	2.8%	1,861

Source: KAMCO Research

Sectors' Return & Valuation Multiples

	Market Cap. (AED Mn)	MTD % Chg	P/E (X)	P/BV (X)	Dividend Yield (%)
ADX	443,386	(7.2%)	12.1	1.4	4.4%
Banks	232,994	(10.2%)	10.4	1.5	4.1%
Inv. & Financial Services	5,513	(7.2%)	47.8	1.3	3.4%
Real Estate	20,859	(13.6%)	8.9	0.9	3.9%
Energy	7,130	(7.5%)	NM	0.5	8.7%
Consumer Staples	5,603	(0.0%)	51.6	1.9	1.1%
Industrial	13,167	5.6%	14.9	0.9	3.6%
Insurance	9,405	(1.3%)	1	1.0	4.2%
Telecommunication	137,768	(3.1%)	12.6	2.1	5.2%
Services	10,947	0.0%	14.7	0.4	3.4%

Sectors' MTD Return is based on the Change in market cap. and it might not conform with the benchmark return for each sector

Market Breadth	▲	5	▼	16	=	44
----------------	---	---	---	----	---	----

Market Return, Volatility & Trading Indicators

Market Return	Closing Value	DTD Chg	DTD % Chg	MTD % Chg	YTD-15 % Chg
ADX General Index	4,330.63	(34.59)	(0.8%)	(7.6%)	(4.4%)
Market Cap (AED Mn)	443,386	(3,618)	(0.8%)	(7.2%)	(4.4%)

Benchmark Volatility**	Volatility Since:				
	Jan-2014	Jan-2013	Jan-2012	Jan-2011	Jan-2010
ADX General Index	21.2%	15.9%	13.5%	12.7%	12.1%

** Annualized Standard Deviation of Daily Returns

Trading Indicators	Today's Value	DTD Chg	DTD % Chg	Average Daily YTD-15	YTD-14
Volume (Mn Shares)	40	(42.1)	(51.4%)	87	361.4
Value Traded (AED Mn)	111	(140.5)	(55.8%)	215	858.2
No. of Trades	1,397	(441)	(24.0%)	1,714	4,466

YTD-2015 Top Movers and Most Active Stocks

YTD-15 Best Return Performers	Price (AED)	YTD-Val ('000 AED)	Volume ('000 Shrs)	YTD-15 Return
Ras Al Khaimah Ceramic Co.	3.80	159,628	45,195	26.7%
National Corp for Tourism & Hotels	6.00	1,590	264	20.7%
Al Khaleej Investment Co.	3.21	171	54	18.9%
AGTHIA Group	7.10	80,379	11,894	14.5%
Ras Al Khaimah Poultry & Feeding Co.	1.45	65	45	14.2%

YTD-15 Worst Return Performers	Price (AED)	YTD-Val ('000 AED)	Volume ('000 Shrs)	YTD-15 Return
National Takaful Co. (Watania)	0.75	1,256	1,607	(27.9%)
Abu Dhabi Ship Building Co.	1.44	3,302	1,836	(24.2%)
Abu Dhabi National Co. for Bldg. Materials	0.63	10,895	16,024	(21.3%)
National Bank of Umm Al-Qaiwain	3.00	1,769	539	(20.0%)
Insurance House	0.81	58	67	(19.0%)

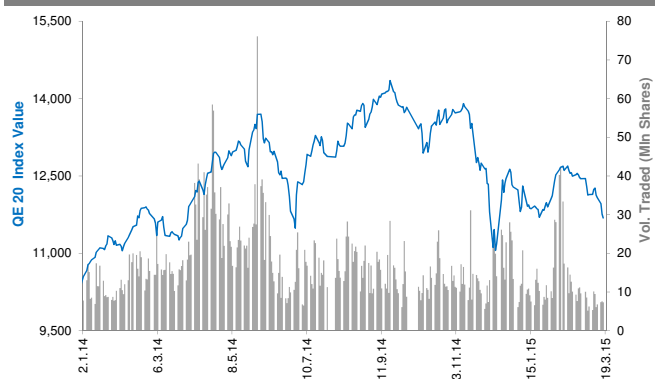
YTD-15 Most Active Stocks by Volume	Price (AED)	YTD-Val ('000 AED)	Volume ('000 Shrs)	YTD-15 Return
Eshraq Properties Co.	0.76	1,231,150	1,518,745	(3.8%)
AL DAR Properties Co.	2.24	2,515,081	986,427	(15.5%)
Ras Al Khaimah Properties	0.74	379,472	499,199	0.0%
Dana Gas	0.42	222,417	468,331	(16.0%)
Waha Capital Co.	2.76	762,164	251,165	(2.1%)

YTD-15 Return: Is a total return which accounts in addition to the change in price the cash & share dividends announced during the year.

Qatar Exchange Daily Report

March 18, 2015

Index Performance relative to Volume



Sectors' Return & Valuation Multiples

	Market Cap. (QAR Mn)	MTD % Chg	P/E (X)	P/B (X)	Yield (%)
Qatar Exchange	634,918	(6.0%)	15.0	2.1	3.6%
Banking & Finance	256,790	(5.4%)	13.5	2.2	3.8%
Goods & Consumer Services	28,189	(6.9%)	15.4	2.3	2.9%
Industrial	183,237	(7.6%)	17.0	3.2	4.5%
Insurance	21,649	(5.2%)	7.7	1.7	2.1%
Real Estate	69,050	(4.5%)	19.5	1.2	1.7%
Telecom	48,174	(6.8%)	19.6	1.6	2.7%
Transport	27,830	(1.9%)	14.0	1.5	3.8%

Sectors' MTD Return is based on the Change in market cap. and it might not conform with the benchmark return for each sector

Market Breadth

▲ 10 ▼ 27 = 6

Top 10 Stocks by Market Capitalization

	Market Cap. (QAR Mn)	P/E (X)	ROE* (%)
1- Qatar National Bank	135,748	13.1	18.8%
2- Industries Qatar	83,309	13.0	19.9%
3- Ezdan Holding Group Co.	40,742	29.8	4.4%
4- Ooredoo (formerly Q-Tel)	33,954	13.1	10.5%
5- Masraf Al Rayan	33,863	18.0	17.3%
6- Mesaieed Petrochemical Holding Co.	33,606	16.9	14.1%
7- Qatar Islamic Bank	23,157	15.5	12.4%
8- Qatar Electricity & Water Co.	20,372	13.6	23.0%
9- Commercial Bank of Qatar	20,103	11.1	12.2%
10- Barwa Real Estate Co.	18,659	11.8	11.5%

Subtotal	443,511	13.00	16.8%
-----------------	----------------	--------------	--------------

* ROE is based on TTM 9M-2014 Net Profit & Shareholders' Equity as of 30-September-14

Today's Top Movers and Most Active Stocks

Best Return Performers	Price (QAR)	Daily Return	Value (QAR)
Islamic Holding Group	120.90	7.9%	10,615,941
Zad Holding Co.	89.80	2.0%	498,313
Qatar Insurance Co.	75.50	1.1%	2,900,677
Gulf Warehousing Co.	58.50	0.9%	760,665
Ooredoo	106.00	0.8%	8,424,226

Worst Return Performers	Price (QAR)	Daily Return	Value (QAR)
Qatar General Insurance & Reins. Co.	61.00	(9.9%)	206,971
Qatar Cinema & Film Distribution	44.70	(9.9%)	10,952
Qatar Islamic Insurance	80.90	(6.5%)	2,926,253
Salam International Investment	13.33	(3.3%)	8,575,122
Qatar International Islamic Bank	77.60	(2.8%)	7,783,448

Most Active Stocks by Volume	Price (QAR)	Daily Return	Volume (Shares)
Vodafone Qatar	16.82	(0.8%)	1,747,033
The Commercial Bank of Qatar	67.70	(1.7%)	813,895
Salam International Investment	13.33	(3.3%)	639,991
Barwa Real Estate Co.	47.95	0.5%	430,040
Masraf Al Rayan	45.15	(0.2%)	391,220

Source: KAMCO Research

Market Return, Volatility & Trading Indicators

Market Return	Closing Value	DTD Chg	DTD % Chg	MTD % Chg	YTD-15 % Chg
QE 20 Index	11,687.17	(73.94)	(0.6%)	(6.1%)	(4.9%)
Market Cap (QAR Mn)	634,918	(5,265)	(0.8%)	(6.0%)	(6.2%)

Benchmark Volatility**	QE 20 Volatility Since:				
	Jan-2014	Jan-2013	Jan-2012	Jan-2011	Jan-2010
QE 20 Index	17.2%	16.6%	14.2%	14.3%	14.4%

** Annualized Standard Deviation of Daily Returns

Trading Indicators	Today's Value	DTD Chg	DTD % Chg	Average Daily YTD-15	YTD-14
Volume ('000 Shares)	7,330	(284)	(3.7%)	12,456	13,739
Value Traded (QAR Mn)	322	(58)	(15.4%)	527	644
No. of Trades	4,785	(353)	(6.9%)	6,257	7,009

YTD-2015 Top Movers and Most Active Stocks

YTD-15 Best Return Performers	Price (QAR)	YTD Value (QAR 000's)	YTD Volume (Shares 000's)	YTD-15 Return
Medicare Group	146.00	341,455	2,472	24.8%
Qatar Industrial Manufacturing Co.	45.00	89,861	1,842	21.1%
Aamal Co.	18.11	394,980	23,570	19.2%
Barwa Real Estate Co.	47.95	3,574,698	78,505	14.4%
Qatar Fuel Co. (Woqod)	186.40	481,756	2,310	12.3%

YTD-15 Worst Return Performers	Price (QAR)	YTD Value (QAR 000's)	YTD Volume (Shares 000's)	YTD-15 Return
Industries Qatar	137.70	2,161,453	14,119	(18.0%)
Salam International Investment	13.33	244,084	15,903	(15.9%)
Ooredoo	106.00	487,609	4,246	(14.4%)
Dlala Brokerage & Inv. Hldg. Co.	37.05	403,191	9,078	(13.4%)
Al Khaleej Takaful Group	44.00	242,849.7	4,571.54	(13.4%)

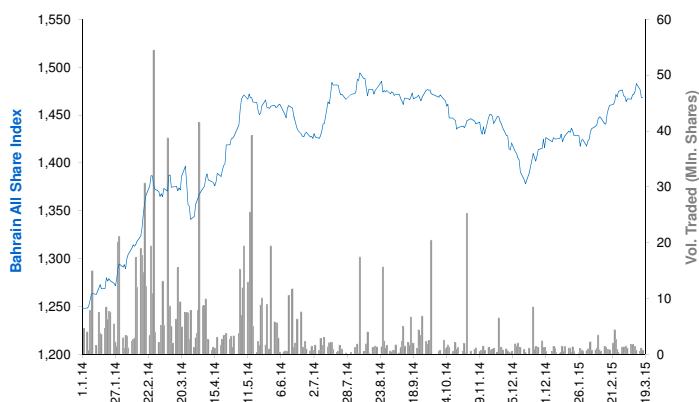
YTD-15 Most Active Stocks by Vol.	Price (QAR)	YTD Value (QAR 000's)	YTD Volume (Shares 000's)	YTD-15 Return
Vodafone Qatar	16.82	1,991,259	114,140	2.2%
Barwa Real Estate Co.	47.95	3,574,698	78,505	14.4%
Ezdan Holding Group Co.	15.36	1,261,797	77,266	2.9%
Mazaya Qatar R.E Development Co.	18.45	955,447	47,843	(3.7%)
Masraf Al Rayan	45.15	1,275,937	27,565	2.1%

YTD-15 Return: Is a total return which accounts in addition to the change in price the cash & share dividends announced during the year.

Bahrain Bourse Daily Report

March 18, 2015

Index Performance relative to Volume



Sectors' Return & Valuation Multiples

	Market Cap. (BHD Mn)	MTD % Chg	P/E (X)	P/B (X)	Yield (%)
Bahrain Bourse	8,339	(0.4%)	12.4	1.0	3.4%
Commercial Banks	3,628	(0.6%)	13.0	1.5	3.9%
Investment	2,485	(0.5%)	14.3	0.8	0.8%
Insurance	180	2.1%	11.2	0.9	2.3%
Service	1,105	0.4%	12.1	1.2	5.2%
Hotel & Tourism	224	6.9%	12.6	1.1	3.8%
Industrial	717	(2.9%)	7.8	0.8	7.3%

Sectors' MTD Return is based on the Change in market cap. and it might not conform with the benchmark return for each sector

Market Breadth

▲ 4 ▼ 3 = 33

Top 10 Stocks by Market Capitalization

	Market Cap. (BHD Mn)	P/E (X)	ROE* (%)
1- Ahli United Bank (Price in USD)	1,833	10.72	14.1%
2- Arab Banking Corp. (Price in USD)	891	9.16	6.5%
3- National Bank of Bahrain	890	16.66	13.6%
4- Aluminum Bahrain	696	7.68	10.2%
5- Bahrain Telecommunications Co.	575	13.09	8.3%
6- Bank of Bahrain and Kuwait	461	9.64	12.8%
7- Al Baraka Banking (Price in USD)	342	6.15	11.1%
8- United Gulf Bank	325	53.62	3.5%
9- Al Salam Bank	257	16.55	4.9%
10- Gulf Finance House (Price in USD)	226	NM	NM
Subtotal	6,498	11.24	9.4%

* ROE is based on TTM 9M 2014 Net Profit & Shareholders' Equity as of 30-Sep-14

Today's Top Movers and Most Active Stocks

Best Return Performers	Price (BHD)	Daily Return	Value (BHD)
Al-Ahlia Insurance Co.	0.340	9.0%	4,427
Bahrain Duty Free Complex	0.870	4.2%	4,350
Seef Properties	0.208	3.0%	5,170
Al Salam Bank	0.120	0.8%	38,706

Worst Return Performers	Price (BHD)	Daily Return	Value (BHD)
Arab Insurance Group (USD)	0.580	(3.3%)	1,804
Ahli United Bank (USD)	0.810	(0.6%)	64,137
Nass Corporation	0.189	(0.5%)	8,268

Most Active Stocks by Volume	Price (BHD)	Daily Return	Volume (Shares)
Al Salam Bank	0.120	0.8%	324,420
Ahli United Bank (USD)	0.810	(0.6%)	210,000
Nass Corporation	0.189	(0.5%)	43,726
Aluminum Bahrain	0.490	0.0%	35,000
Seef Properties	0.208	3.0%	25,000

Source: KAMCO Research

Market Return, Volatility & Trading Indicators

Market Return	Closing Value	DTD Chg	DTD % Chg	MTD % Chg	YTD-15 % Chg
Bahrain All Share Index	1,468.12	(0.46)	(0.0%)	(0.5%)	2.9%
Market Cap (BHD Mln)	8,339.38	3.47	0.0%	(0.4%)	3.1%

Benchmark Volatility**

	Jan-2014	Jan-2013	Jan-2012	Jan-2011	Jan-2010
Bahrain All Share Index	7.13%	6.9%	6.8%	7.3%	7.8%

** Annualized Standard Deviation of Daily Returns

Trading Indicators	Today's Value	DTD Chg	DTD % Chg	Average Daily YTD-15	YTD-14
Volume ('000 Shares)	686	(436)	(38.9%)	1,096	8,389
Value Traded (BHD '000)	151	(85)	(36.0%)	303	1,585
No. of Trades	31	(42.0)	(57.5%)	45	110

YTD-2015 Top Movers and Most Active Stocks

YTD-15 Best Return Performers	Price (BHD)	YTD-Val (BHD '000)	YTD Vol (Shares)	YTD-15 Return
Al-Ahlia Insurance Co.	0.340	19	69,260	25.9%
Esterad Investment Co.	0.240	90	406,404	20.0%
Investcorp Bank (USD)	601.000	485	2,705	19.8%
Gulf Hotels Group	0.940	83	93,614	18.9%
Bahrain Commercial Facilities Co.	0.825	36	46,374	17.9%

YTD-15 Worst Return Performers	Price (BHD)	YTD-Val (BHD '000)	YTD Vol (Shares)	YTD-15 Return
Bank of Bahrain and Kuwait	0.426	3,127	6,838,398	(17.6%)
Al Salam Bank	0.120	1,322.5	10,288,237	(8.4%)
Zain Bahrain B.S.C	0.185	81	416,967	(7.5%)
Aluminum Bahrain	0.490	1,235	2,481,804	(4.9%)
Bah. Ship. Repairing and Engineering Co	2.000	4	2,000	(4.8%)

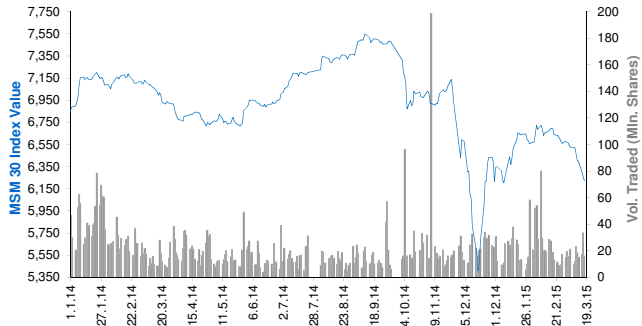
YTD-15 Most Active Stocks by Volume	Price (BHD)	YTD-Val (BHD '000)	YTD Vol (Shares)	YTD-15 Return
Ahli United Bank (USD)	0.810	5,187	16,790,575	4.3%
Al Salam Bank	0.120	1,322	10,288,237	(8.4%)
Bank of Bahrain and Kuwait	0.426	3,127	6,838,398	(17.6%)
AlKhaleeji Commercial Bank	0.044	198	4,328,681	2.3%
ITHMAR Bank (USD)	0.155	252	3,987,339	(3.1%)

YTD-15 Return: Is a total return which accounts in addition to the change in price the cash & share dividends announced during the year.

Muscat Securities Market Daily Report

March 18, 2015

Index Performance relative to Volume



Sectors' Return & Valuation Multiples

	Market Cap. (OMR Mn)	MTD % Chg	P/E (X)	P/B (X)	Yield (%)
Muscat Securities Mkt	7,612	(4.8%)	9.99	1.43	3.9%
Financial	3,489	(7.5%)	8.33	1.06	3.5%
Industrial	1,273	(2.4%)	12.78	1.66	4.8%
Services	2,850	(2.5%)	11.70	2.24	4.1%

Sectors' MTD Return is based on the Change in market cap. and it might not conform with the benchmark return for each sector

Market Breadth	▲	6	▼	11	=	36
----------------	---	---	---	----	---	----

Top 10 Stocks by Market Capitalization

	Market Cap. (OMR Mn)	P/E (X)	ROE* (%)
1- Oman Telecom Co.	1,294	10.30	23.1%
2- Bank Muscat	1,170	6.63	13.8%
3- Bank Dhofar	473	11.92	12.5%
4- Ooredoo	450	11.39	20.5%
5- National Bank of Oman	383	8.10	13.5%
6- Raysut Cement	349	12.99	19.8%
7- HSBC Bank Oman	260	34.23	2.5%
8- Ahli Bank	251	10.41	13.0%
9- Bank Sohar	217	6.69	17.1%
10- Shell Oman Marketing	200	17.95	36.3%

Subtotal 5,218 9.52 15.2%

* ROE is based on TTM 9M-2014 Net Profit & Shareholders' Equity as of 30-Sep-14

Today's Top Movers and Most Active Stocks

Best Return Performers	Price (OMR)	Daily Return	Value (OMR)
Global Financial Investment Co.	0.105	5.0%	11,200
Al Anwar Holding	0.248	3.3%	1,348,610
Gulf International Chemicals	0.260	3.2%	51,180
Ooredoo	0.692	1.2%	419,170
Galfar Engineering	0.145	0.7%	16,610

Worst Return Performers	Price (OMR)	Daily Return	Value (OMR)
Al Jazeera Steel Products Co.	0.302	(5.6%)	35,480
Ahli Bank	0.194	(3.0%)	40,430
Bank Sohar	0.190	(2.6%)	116,220
Voltamp Energy	0.408	(2.4%)	17,880
National Gas Co.	0.430	(2.3%)	4,940

Most Active Stocks by Volume	Price (OMR)	Daily Return	Volume (Shares)
Al Anwar Holding	0.248	3.3%	5,428,390
Gulf Investment Services	0.145	0.0%	3,430,086
Bank Muscat	0.536	(1.8%)	2,382,444
Al Anwar Ceramic Tiles Co.	0.460	0.0%	639,552
Bank Sohar	0.190	(2.6%)	612,140

Source: KAMCO Research

Market Return, Volatility & Trading Indicators

Market Return	Closing Value	DTD Chg	DTD % Chg	MTD % Chg	YTD-15 % Chg
MSM 30 Index	6,222.88	(35.21)	(0.3%)	(5.1%)	(1.9%)
Market Cap (OMR Mn)	7,611.83	(48.15)	(0.6%)	(4.8%)	(1.6%)

Benchmark Volatility**	Volatility Since:				
	Jan-2014	Jan-2013	Jan-2012	Jan-2011	Jan-2010
MSM 30 Index	15.3%	12.7%	11.4%	11.5%	11.1%

** Annualized Standard Deviation of Daily Returns

Trading Indicators	Today's Value	DTD Chg	DTD % Chg	Average Daily YTD-15	YTD-14
--------------------	------------------	------------	--------------	-------------------------	--------

Volume ('000 Shares)	16,215	(17,552)	(52.0%)	20,471	31,339
Value Traded (OMR '000)	4,936	(2,585)	(34.4%)	6,329	10,381
No. of Trades	1,245	422	51.3%	1,247	1,605

YTD-2015 Top Movers and Most Active Stocks

YTD-15 Best Return Performers	Price (OMR)	YTD-Value (OMR 000's)	YTD Vol. (Shares 000's)	YTD-15 Return
Gulf International Chemicals	0.260	6,870	29,706	71.1%
United Power	2.000	101	52	50.9%
Al Anwar Holding	0.248	70,473	277,853	29.8%
ONIC. Holding	0.400	4,813	12,404	26.6%
Al Sharqia Inv. Holding	0.157	5,472	31,825	20.8%

YTD-15 Worst Return Performers	Price (OMR)	YTD-Value (OMR 000's)	YTD Volume (Shares 000's)	YTD-15 Return
National Gas Co.	0.430	1,521	2,951	(21.8%)
Ahli Bank	0.194	2,172	9,612	(20.8%)
Renaissance Services	0.386	6,643	13,948	(18.6%)
Port Services Corporation	0.297	209	627	(16.1%)
Al Madina Investment company	0.063	545	7,609	(16.0%)

YTD-15 Most Active Stocks by Volume	Price (OMR)	YTD-Value (OMR 000's)	YTD Volume (Shares 000's)	YTD-15 Return
Al Anwar Holding	0.248	70,473	277,853	29.8%
Gulf Investment Services	0.145	23,117	135,940	2.1%
Bank Muscat	0.536	43,172	73,479	(7.9%)
Oman & Emirates Investment	0.123	9,628	68,826	0.0%
United Finance	0.146	9,973	67,320	7.4%

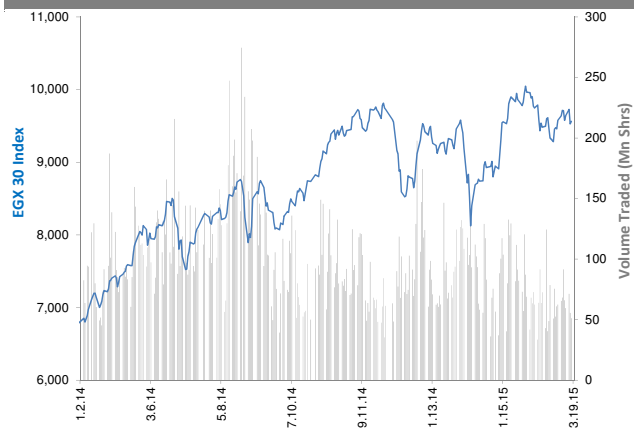
YTD-15 Return: Is a total return which accounts in addition to the change in price the cash & share dividends announced during the year.

The Egyptian Exchange Daily Report

(The bulletin covers the top 60 companies by Mkt. Cap out of 336 listed companies)

March 18, 2015

Index Performance relative to Volume



Sectors' Return & Valuation Multiples

	Market Cap. (EGP Mn)	MTD % Chg	P/E (X)	P/BV (X)	Yield (%)
The Egyptian Exchange	387,537	(0.0%)	23.7	1.7	3.5%
Banking & Finance	79,635	2.7%	12.3	2.6	2.3%
Basic Resources	20,928	0.1%	NM	1.8	3.8%
Chemical	21,481	(3.3%)	7.7	3.1	8.8%
Construction & Material	80,595	2.2%	12.6	0.8	5.2%
Financial Services	25,591	2.0%	NM	1.2	0.8%
Food & Beverage	8,864	(5.4%)	17.0	2.5	3.2%
Healthcare & Pharma.	6,743	5.6%	21.6	3.6	3.5%
Ind. Goods, Services, Auto.	17,625	5.2%	65.5	2.4	1.7%
Media	669	1.4%	21.3	0.3	0.0%
Oil & Gas	4,770	(1.1%)	5.8	1.7	16.2%
Personal & Household	18,541	(0.8%)	17.9	1.7	2.8%
Real Estate	46,385	3.5%	53.7	1.4	0.2%
Telecommunication	50,829	(7.6%)	NM	1.8	7.0%
Travel & Leisure	4,882	(5.9%)	NM	1.4	0.0%

Sectors' MTD Return is based on the Change in market cap. and it might not conform with the benchmark return for each sector

Top 10 Stocks by Market Capitalization

	Market Cap. (EGP Mn)	P/E (X)	ROE* (%)
1-Orascom Construction Industries (OCI)	58,503	NM	NM
2-Commercial Int'l Bank (Egypt)	52,311	17.4	25.1%
3-T M G Holding	22,493	38.4	2.3%
4-Global Telecom Hldg.	19,252	NM	NM
5-Telecom Egypt	18,778	6.3	10.5%
6-ABU Qir Fertilizers & Chemical ind. Co.	13,044	9.3	43.3%
7-MobiNil	12,800	NM	NM
8-Elswedey Cables	11,372	NM	2.0%
9-EASTERN CO	11,368	15.1	16.9%
10-Egyptian Financial Group-Hermes Co.	9,749	NM	NM
Subtotal	171,166	34.70	5.0%

*: ROE is based on Net Profit for the Period FY-13 & Shareholders' Equity as of 31-December-13

Today's Top Movers and Most Active Stocks

Best Return Performers	Last Price (EGP)	Daily Return
National CementCo. - Egypt	11.77	9.2%
Elswedey Cables	50.90	7.8%
GB AUTO S.A.E	34.12	6.6%
National Bank of Kuwait - Egypt - NBK	23.10	2.7%
Misr Beni Suef Cement	44.00	2.2%

Worst Return Performers	Last Price (EGP)	Daily Return
Orascom Hotels & Development	12.02	(5.4%)
Egyptian Co. for Mobile Services (MobiNil)	128.00	(4.5%)
Pioneers Holding Co.	11.30	(3.0%)
Upper Egypt Contracting	1.43	(2.1%)
Egyptian Financial & Industrial	9.09	(1.6%)

Most Active Stocks By Volume	Last Price (EGP)	Volume ('000 Shrs)
Amer Group Holding	1.10	11,671
Egyptian Resorts Co.	1.19	5,500
Palm Hills Developments	4.14	5,226
Global Telecom Hldg. (Orascom Telecom)	3.67	5,126
Citadel Capital	2.80	4,795

Source: KAMCO Research

Market Return, Volatility & Trading Indicators

Market Return	Closing Value	DTD Chg	DTD % Chg	MTD % Chg	YTD-15 % Chg
EGX 30 Index	9,561.33	32.32	0.3%	2.4%	7.1%
Market Cap (EGP Mn)	387,537	677	0.2%	(0.0%)	2.1%

Benchmark Volatility**	Since Jan-14	Since Jan-13	Since Jan-12	Since Jan-11	Since Jan-10
EGX 30 Index	21%	21%	24%	25%	26%

**: Annualized Standard Deviation of Daily Returns

Trading Indicators	Today's Value	DTD Chg	DTD % Chg	Average Daily YTD-15	YTD-14
Volume (Mn Shares)	51	(4.47)	(8.0%)	74	147
Value Traded (EGP Mn)	372	25.2	7.3%	436	539
No. of Trades	10,746	(139)	(1.3%)	13,124	17,250

Market Breadth	▲ 21	▼ 28	= 11
----------------	------	------	------

YTD-2015 Top Movers and Most Active Stocks

YTD-15 Best Return Performers	Last Price (EGP)	Volume ('000 Shrs)	YTD-15 Return
Elswedey Cables	50.90	11,071	22.7%
Suez Cement Co.	42.00	1,717	17.5%
Commercial Int'l Bank (Egypt)	57.60	78,856	17.3%
Medinet Nasr Housing	34.80	18,639	16.2%
Heliopolis Housing	66.03	13,365	15.4%

YTD-15 Worst Return Performers	Last Price (EGP)	Volume ('000 Shrs)	YTD-15 Return
Orascom Hotels & Development	12.02	10,394	(38.1%)
Egyptian Co. for Mobile Services (MobiNil)	128.00	286	(25.4%)
Asec Company for Mining - Ascom	9.09	1,989	(23.0%)
Al Ezz Dekheila Steel Co. Alexandria	490.00	34	(15.7%)
Amer Group Holding	1.10	1,040,698	(14.1%)

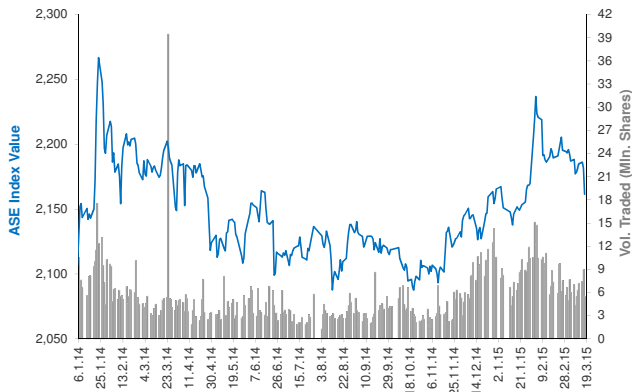
YTD-15 Most Active Stocks by Volume	Last Price (EGP)	Volume ('000 Shrs)	YTD-15 Return
Amer Group Holding	1.10	1,040,698	(14.06%)
Citadel Capital	2.80	470,232	(2.44%)
Egyptian Resorts Co.	1.19	390,730	(2.46%)
Global Telecom Hldg. (Orascom Telecom)	3.67	352,953	(7.56%)
Palm Hills Developments	4.14	272,368	0.73%

YTD-15 Return: Is a total return which accounts in addition to the change in price the cash & share dividends announced during the year.

Amman Stock Exchange Daily Report (1st Market)

March 18, 2015

Index Performance relative to Volume



Sectors' Return & Valuation Multiples

	Market Cap. (JD Mn)	MTD % Chg	P/E (X)	P/BV (X)	Yield (%)
Amman Stock Exchange	13,626	(1.4%)	14.6	0.9	3.8%
Banks	9,473	0.0%	10.6	0.8	3.6%
Insurance	95	(1.7%)	NM	0.9	3.3%
Diversified Financial Services	196	(2.7%)	NM	0.5	0.8%
Real Estate	313	(2.0%)	NM	0.8	0.4%
Educational Services	335	(0.7%)	12.6	2.2	4.1%
Hotels and Tourism	148	(2.8%)	25.3	0.7	3.8%
Transportation	103	(8.2%)	32.0	0.9	2.5%
Technology & Commun.	816	(4.1%)	16.4	2.2	10.1%
Media	18	(6.2%)	NM	0.4	0.0%
Utilities & Energy	671	0.1%	31.9	2.9	2.7%
Pharmaceutical & Medical Ind.	99	(1.7%)	53.9	1.0	0.0%
Tobacco & Cigarettes	311	(5.6%)	9.9	2.8	7.4%
Mining & Extraction Industries	636	(1.9%)	NM	0.7	3.4%
Engineering & Construction	109	1.2%	38.3	1.6	1.2%
Textiles, Leather & Cloth.	81	4.1%	17.1	1.0	5.0%

Sectors' MTD Return is based on the Change in market cap. and it might not conform with the benchmark return for each sector

Top 10 Stocks by Market Capitalization

	Market Cap. (JD Mn)	P/E (X)	ROE* (%)
1-ARAB BANK	3,833	7.7	6.5%
2-HOUSING BK TRD FIN	2,318	23.2	10.3%
3-JORDAN TELECOM	803	15.6	14.1%
4-JOR ISLAMIC BANK	528	11.7	17.7%
5-JOR PHOSPHATE MN	482	NM	0.2%
6-BANK OF JORDAN	434	10.7	12.9%
7-CAIRO AMMAN BANK	400	9.8	15.4%
8-JOR KUWAIT BANK	392	8.3	11.7%
9-JOR PETROL M REF	378	13.4	22.6%
10-ARAB JOR/INV/BANK	308	20.3	10.9%

Subtotal	9,876	11.39	7.7%
-----------------	--------------	--------------	-------------

* ROE is based on FY-2013 Net Profit & Shareholders' Equity as of 31-December-13

Today's Top Movers and Most Active Stocks

Best Return Performers	Price (JD)	Daily Return
INT'L BROKERAGE & FINANCIAL MARKETS	0.26	4.0%
UNION TOBACCO & CIGARETTE INDUSTRIES	4.99	4.0%
JORDAN DAIRY	3.39	3.7%
UNIVERSAL CHEMICAL INDUSTRIES	0.60	3.4%
JORDAN LOAN GUARANTEE CORP.	0.61	3.4%

Worst Return Performers	Price (JD)	Daily Return
THE ISLAMIC INSURANCE	1.32	(5.0%)
ALIA- THE ROYAL JORDANIAN AIRLINES	0.57	(5.0%)
AD-DULAYL INDUSTRIAL PARK & REAL ESTATE CO.	1.34	(5.0%)
SPECIALIZED INVESTMENT COMPOUNDS	0.80	(4.8%)
NATIONAL CABLE & WIRE MANUFACTURING	0.61	(4.7%)

Most Active Stocks By Volume	Price (JD)	Volume ('000 Shrs)
AD-DULAYL INDUSTRIAL PARK & REAL ESTATE CO.	1.34	921
CENTURY INVESTMENT GROUP	2.33	782
JORDAN INDUSTRIAL RESOURCES	0.48	718
TRANSPORT& INVESTMENT BARTER CO.	0.69	514
AL-TAJAMOUAT FOR CATERING AND HOUSING CO.	1.41	493

Source: KAMCO Research

Market Return, Volatility & Trading Indicators

Market Return	Closing Value	DTD Chg	DTD % Chg	MTD % Chg	YTD-15 % Chg
ASE Index	2,161.47	(20.01)	(0.9%)	(1.5%)	(0.2%)
Market Cap (JD Mn)	13,626.16	(166.08)	(1.2%)	(1.4%)	(2.0%)

Benchmark Volatility**	Since Jan-2014	Since Jan-2013	Since Jan-2012
ASE Index	7.6%	8.1%	7.6%

** Annualized Standard Deviation of Daily Returns

Trading Indicators	Today's Value	DTD Chg	DTD % Chg	Average Daily YTD-15	YTD-14
Volume ('000 Shares)	5,521	(3,449)	(38.4%)	8,425	6,620
Value Traded (JD '000)	6,945	(4,334)	(38.4%)	8,219	8,373
No. of Trades	2,481	(130)	(5.0%)	2,875	3,096

Market Breadth	▲ 17 ▼ 34 = 68
-----------------------	-----------------------

YTD-2015 Top Movers and Most Active Stocks

YTD-15 Best Return Performers	Price (JD)	Volume ('000 Shrs)	YTD-15 Return
JORDAN DAIRY	3.39	11.6	67.8%
AD-DULAYL INDUSTRIAL PARK & REAL ESTATE CO.	1.34	101,946.9	63.4%
CENTURY INVESTMENT GROUP	2.33	12,776.9	47.5%
REAL ESTATE DEVELOPMENT	0.26	31,411.2	44.4%
JORDAN PETROLEUM REFINERY	5.04	3,615.0	41.6%

YTD-15 Worst Return Performers	Price (JD)	Volume ('000 Shrs)	YTD-15 Return
M. E PHARMA. & CHMICAL IND. & MEDICAL APPLIANCE	1.01	2.3	(49.0%)
COMPREHENSIVE MULTIPLE PROJECT CO.	0.79	4.5	(36.3%)
NUTRIDAR	0.54	0.7	(22.9%)
AKARY FOR INDUSTRIES & REAL ESTATE INV.	1.94	227.0	(22.7%)
JORDAN DUBAI PROPERTIES	0.53	2,590.7	(19.7%)

YTD-15 Most Active Stocks by Volume	Price (JD)	Volume ('000 Shrs)	YTD-15 Return
AD-DULAYL INDUSTRIAL PARK & REAL ESTATE CO.	1.34	101,947	63.4%
TRANSPORT& INVESTMENT BARTER CO.	0.69	59,677	(5.5%)
JORDAN INDUSTRIAL RESOURCES	0.48	42,704	(2.0%)
REAL ESTATE DEVELOPMENT	0.26	31,411	44.4%
SPECIALIZED INVESTMENT COMPOUNDS	0.80	23,470	37.9%

YTD-15 Return: Is a total return which accounts in addition to the change in price the cash & share dividends announced during the year.

Tunisia Stock Exchange Daily Report

March 18, 2015

Index Performance relative to Volume



Sectors' Return & Valuation Multiples

	Market Cap. (DT Mn)	MTD % Chg	P/E (X)	P/B (X)	Yield (%)
Tunis Stock Exchange	17,120	(1.2%)	20.87	1.95	2.2%
Banking	6,682	0.1%	14.64	1.46	2.2%
Insurance	757	0.1%	18.51	1.50	0.8%
Leasing	520	2.3%	12.11	1.22	3.5%
Financial Services	1,388	4.6%	16.86	2.20	2.4%
Industrial	1,269	3.1%	14.49	2.60	2.6%
Chemical Industry	709	(2.6%)	42.91	2.14	4.3%
Food & Beverage	3,465	(8.1%)	25.29	5.29	1.4%
Retailing	1,451	0.1%	NM	4.18	3.1%
Others	880	(0.0%)	NM	1.09	1.2%

Sectors' MTD Return is based on the Change in market cap. and it might not conform with the benchmark return for each sector

Top 10 Stocks by Market Capitalization

	Market Cap. (DT Mn)	P/E (X)	ROE* (%)
1-Société Frigorifique et Brasserie de Tunis	2,429	21.66	22.0%
2-Banque de Tunisie	1,647	21.99	12.3%
3-Banque Internationale Arabe de Tunisie	1,420	17.79	13.1%
4-Banque Attijari De Tunisie	1,105	13.37	21.3%
5-Poulina Group Holding	990	14.72	12.1%
6-Delice Holding	954	38.17	24.5%
7-Amen Bank	574	5.41	17.3%
8-Union Bancaire pour le Commerce et	506	61.89	3.1%
9-Arab Tunisian Bank	479	9.98	9.8%
10-Société d'Articles Hygiéniques	439	30.70	13.4%
Subtotal	10,543	17.04	14.6%

*: ROE is based on Net Profit for the Period FY-13 & Shareholders' Equity as of 31-December-13

Today's Top Movers and Most Active Stocks

Best Return Performers	Price (DT)	Daily Return
Société Générale Industrielle de Filtration	3.32	6.1%
Banque Nationale Agricole	9.79	6.0%
Société Tunisienne des Marchés de Gros	1.79	2.3%
Assurances Salim	20.20	1.1%
Société de Placement et de Dévelop. Ind. et Touristique	12.01	1.1%

Worst Return Performers	Price (DT)	Daily Return
Société Tunis. d'Entreprises de Télécom.	2.62	(3.0%)
Ciments De Bizerte	5.82	(2.8%)
Industries Chimiques du Fluor	33.00	(2.8%)
Tunisie Profilés Aluminium	4.10	(1.7%)
Banque de Tunisie et des Emirats	22.00	(1.6%)

Most Active Stocks By Volume	Price (DT)	Volume (Shares)
Société d'Articles Hygiéniques	12.60	208,646
Société Générale Industrielle de Filtration	3.32	75,840
Poulina Group Holding	5.50	57,655
Société Moderne de Céramique	2.90	57,421
Laboratoires Adwya	8.10	51,120

Source: KAMCO Research

Market Return, Volatility & Trading Indicators

Market Return	Closing Value	DTD Chg	DTD % Chg	MTD % Chg	YTD-15 % Chg
Tunisia Index	5,369.41	6.05	0.1%	(1.3%)	5.5%
Market Cap (DT Mln)	17,120	11.37	0.1%	(1.2%)	5.7%

Benchmark Volatility	Since Jan-14	Since Jan-13	Since Jan-12
Tunisia Index	6.6%	6.8%	6.9%

Trading Indicators	Today's Value	DTD Chg	DTD % Chg	Average Daily YTD-15	YTD-14
Volume ('000 Shares)	703	94.7	15.6%	724	1,317
Value Traded ('000 DT)	5,669	2,342	70.4%	6,576	8,083
No. of Trades	1,325	(138)	(9.4%)	1,597	2,360

Market Breadth	▲ 17	▼ 25	= 22
----------------	------	------	------

YTD-2015 Top Movers and Most Active Stocks

YTD-15 Best Return Performers	Price (DT)	Volume ('000 Shrs)	YTD-15 Return
Société de Placement et de Dévelop. Ind. et Touristique	12.01	118.3	30.7%
Banque Nationale Agricole	9.79	572.1	28.8%
Banque de l'Habitat	12.70	1,806.8	23.9%
Société d'Articles Hygiéniques	12.60	3,129.3	20.3%
Société Frigorifique et Brasserie de Tunis	26.99	4,072.8	20.0%

YTD-15 Worst Return Performers	Price (DT)	Volume ('000 Shrs)	YTD-15 Return
Société Tunis. d'Entreprises de Télécom.	2.62	276.954	(24.1%)
Assurances Salim	20.20	39.8	(23.2%)
Société Tunisienne de Réassurance	8.20	625.2	(17.6%)
Société Tunisienne d'Equipement	8.69	-	(16.5%)
Société Essoukna	5.26	88.8	(16.4%)

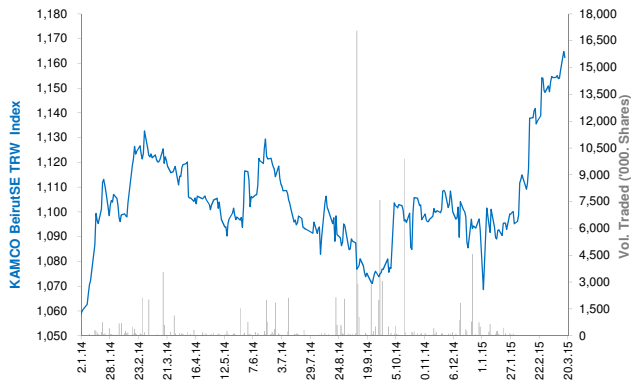
YTD-15 Most Active Stocks by Volume	Price (DT)	Volume ('000 Shrs)	YTD-15 Return
Société Moderne de Céramique	2.90	6,494.1	15.5%
Société Frigorifique et Brasserie de Tunis	26.99	4,072.8	20.0%
Société d'Articles Hygiéniques	12.60	3,129.3	20.3%
TUNISAIR	1.00	1,952.7	-11.5%
Banque de l'Habitat	12.70	1,806.8	23.9%

YTD-15 Return: Is a total return which accounts in addition to the change in price the cash & share dividends announced during the year.

Beirut Stock Exchange Daily Report

March 18, 2015

Index Performance relative to Volume



Sectors' Return & Valuation Multiples

	Market Cap. (USD Mn)	MTD % Chg	P/E (X)	P/B (X)	Yield (%)
Beirut Stock Exchange	11,919	1.2%	8.95	1.02	3.8%
Banking	9,644	0.6%	8.53	1.00	4.5%
Industrial	323	0.5%	12.83	1.41	5.0%
Trading	35	0.0%	11.56	0.69	8.5%
Real Estate & Construction	1,936	4.6%	10.60	1.04	0.0%

Sectors' MTD Return is based on the Change in market cap. and it might not conform with the benchmark return for each sector

Market Breadth

▲	4	▼	2	=	24
---	---	---	---	---	----

Top 10 Stocks by Market Capitalization

	Market Cap. (USD Mn)	P/E (X)	ROE* (%)
1- Bank Audi	2,698	11.70	11.3%
2- BLOM Bank	2,000	8.51	15.0%
3- Solidere A	1,177	6.44	9.8%
4- Byblos Bank	961	6.46	9.3%
5- Bank Audi GDR	828	-	-
6- Solidere B	759	4.16	9.8%
7- BLOM Bank GDR	739	-	-
8- Bank Of Beirut	310	5.15	11.0%
9- Holcim Liban	293	13.42	10.2%
10- Byblos Bank Preferred 2009	205	-	-
Subtotal	9,969	7.62	11.2%

*: ROE is based on Net Profit for the period ended December-13 and Shareholders' equity as of 31-December-13

Today's Top Movers and Most Active Stocks

Best Return Performers	Price (USD)	Daily Return
Bank Audi GDR	7.12	1.7%
Byblos Bank	1.70	1.2%
Byblos Bank Preferred 2008	102.40	0.2%
Solidere B	11.68	0.1%

Worst Return Performers	Price (USD)	Daily Return
BLOM Bank	9.30	(2.1%)
Solidere A	11.77	(0.7%)

Most Active Stocks by Volume	Price (USD)	Volume (Shares)
Bank Audi GDR	7.12	25,000
Solidere A	11.77	17,401
Byblos Bank	1.70	15,750
Solidere B	11.68	6,261
BLOM Bank	9.30	2,750

Source: KAMCO Research

Market Return, Volatility & Trading Indicators

Market Return	Closing Value	DTD Chg	DTD % Chg	MTD % Chg	YTD-15 % Chg
KAMCO BeirutSE TRW Index	1,162.39	(2.40)	(0.2%)	1.2%	6.4%
Market Cap (USD Mn)	11,919.371	(24.69)	(0.2%)	1.2%	6.2%

Benchmark Volatility	Since Jan-14	Since Jan-13	Since Jan-12
KAMCO BeirutSE TRW Index	7.9%	7.4%	7.1%

Trading Indicators	Today's Value	DTD Chg	DTD % Chg	Average Daily YTD-15	YTD-14
Volume ('000s shares)	137.19	10	7.9%	533	662
Value Traded ('000s USD)	655.23	(78)	(10.6%)	3,835	2,878

YTD-2015 Top Movers and Most Active Stocks

YTD Best Return Performers	Price (USD)	YTD Volume (Shares)	YTD-15 Return
Bank Audi	6.75	19,194,014	12.5%
Bank Audi GDR	7.12	435,865	8.7%
BEMO Bank	1.90	124,374	8.6%
Byblos Bank	1.70	2,610,612	6.3%
BLOM Bank	9.30	2,057,961	5.7%

YTD Worst Return Performers	Price (USD)	YTD Volume (Shares)	YTD-15 Return
BLC Bank Preferred A	100.000	10,000	(2.9%)
Holcim Liban	15.000	7,968	(1.6%)

YTD Most Active Stocks by Volume	Price (USD)	YTD Volume (Shares)	YTD-15 Return
Bank Audi	6.75	19,194,014	12.5%
Byblos Bank	1.70	2,610,612	6.3%
BLOM Bank	9.30	2,057,961	5.7%
Solidere A	11.77	890,558	4.0%
Solidere B	11.68	476,242	3.0%

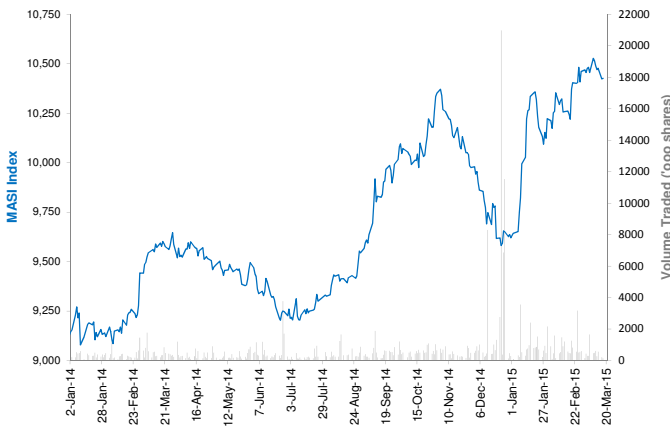
YTD-15 Return: Is a total return which accounts in addition to the change in price the cash & share dividends announced during the year.

Casablanca Stock Exchange Daily Report

(The Bulletin covers the 41 Stocks listed on the Main Market)

March 18, 2015

Index Performance relative to Volume



Market Breadth

▲ 10 ▼ 18 = 13

Top 10 Stocks by Market Capitalization

	Market Cap. (MAD Mn)	P/E (X)	ROE* (%)
1-Itissalat Al-Maghrib	116,392	21.0	36.1%
2-Attijariwafa Bank	76,462	18.5	12.5%
3-Banque Marocaine Du Commerce Exterieur	42,712	34.7	8.3%
4-Banque Centrale Populaire	40,983	21.8	6.7%
5-Ciments Du Maroc	16,746	20.7	13.1%
6-Wafa Assurances	14,700	18.9	19.9%
7-CIE Generale Immobiliere	13,346	36.4	8.2%
8-Douja Prom Addoha	10,641	6.3	15.5%
9-Holcim Maroc	9,494	25.2	11.4%
10-Banque Marocaine Due Commerce Et De L'Industries	9,229	14.4	7.6%
Subtotal	350,704	20.11	13.5%

*: ROE is based on Net Profit for the period FY-13 and Shareholders' equity as of 31-December-13

Today's Top Movers and Most Active Stocks

Best Return Performers	Price (MAD)	Daily Return
Miniere Touissit	1,207.00	5.0%
Lyonnaise des Eaux de Casablanca	420.00	3.2%
Societe Nationale de Siderurgie	1,018.00	2.7%
Fenie Brossette	185.00	2.2%
Banque Marocaine Du Commerce Exterieur	238.00	1.7%

Worst Return Performers	Price (MAD)	Daily Return
Med Paper	15.74	(6.0%)
Risma	225.00	(5.5%)
Salafin	625.30	(3.8%)
Marocaine de l Industrie du Raffinage	211.90	(3.7%)
Disway	223.00	(3.5%)

Most Active Stocks By Volume	Price (MAD)	Volume (Shrs)
Itissalat Al-Maghrib	132.40	49,303
Attijariwafa Bank	379.95	24,474
Banque Centrale Populaire	236.70	24,230
Douja Prom Addoha	33.78	19,943
Marocaine de l Industrie du Raffinage	211.90	5,568

Source: KAMCO Research

Sectors' Return & Valuation Multiples

	Market Cap. (MAD Mn)	MTD % Chg	P/E (X)	P/B (X)	Yield (%)
Casablanca Stock Exchange	466,794	(0.2%)	19.2	2.4	3.6%
Banking	183,252	0.9%	21.1	2.0	2.3%
Beverages	1,883	0.1%	23.7	3.6	2.6%
Chemicals	362	(29.1%)	NM	0.7	0.0%
Construction & Bldg. Material	62,877	(3.1%)	23.6	3.7	3.4%
Distributors	8,927	1.5%	28.5	2.4	2.4%
Electrical & Electronic Equipment	453	6.9%	45.5	0.7	5.9%
Electricity	1,117	0.0%	2.8	0.2	0.0%
Food Producers & Processors	3,665	(0.9%)	4.9	0.7	14.6%
Holding Companies	2,646	(4.1%)	23.1	2.0	4.0%
Insurance	23,855	(0.7%)	21.0	3.4	1.8%
Investment & other Finance	3,852	(1.4%)	14.1	1.8	7.2%
Leisures & Hotel	1,774	3.7%	NM	1.9	0.0%
Materials, Software & Computer	760	(0.2%)	13.6	1.1	5.1%
Mining	15,584	1.1%	12.2	2.6	7.3%
Oil & Gas	9,988	(8.0%)	NM	1.2	0.0%
Real Estate	25,570	2.1%	9.7	1.2	4.5%
Telecommunications	116,392	(0.2%)	21.0	7.6	5.6%
Transport	435	3.2%	12.4	1.6	7.0%
Utilities	3,360	0.5%	11.4	2.0	5.4%
Forestry & Paper	41	(34.1%)	NM	0.7	0.0%

Sectors' MTD Return is based on the Change in market cap. and it might not conform with the benchmark return for each sector

Market Return, Volatility & Trading Indicators

Market Return	Closing Value	DTD Chg	DTD % Chg	MTD % Chg	YTD-15 % Chg
MASI Index	10,426.40	2.3	0.0%	(0.3%)	8.4%
MADEX Index	8,565.70	4.0	0.0%	(0.1%)	9.2%
Market Cap (MAD Mn)	466,794	0.1	0.0%	(0.2%)	8.1%

Benchmark Volatility**	YTD-14	Since Jan-13	Since Jan-12	Since Jan-11	Since Jan-10
MASI Index	7.5%	8.2%	8.8%	9.8%	9.9%
MADEX Index	9.5%	8.0%	8.6%	9.1%	10.2%

**: Annualized Standard Deviation of Daily Returns

Trading Indicators	Today's Value	DTD Chg	DTD % Chg	Average Daily YTD-15	YTD-14
Volume ('000 Shares)	145.15	(66.32)	(31.4%)	798	516
Value Traded (MAD Mn)	14.49	(5.52)	(27.6%)	59	70

YTD-2015 Top Movers and Most Active Stocks

YTD Best Return Performers	Price (MAD)	Volume (Shrs)	YTD-15 Return
Hightech Payment Systems SA	483.00	16,487	29.8%
Ciments Du Maroc	1,160.00	139,999	23.4%
Holcim Maroc	2,255.00	103,792	18.4%
TAQA MOROCCO	500.00	316,672	17.6%
Nexans Maroc	202.00	1,737	17.1%

YTD Worst Return Performers	Price (MAD)	Volume (Shrs)	YTD-15 Return
Alliances Developpement Immobilier	126.95	522,260	(54.3%)
Med Paper	15.74	253,771	(43.4%)
Societe Nationale d'Electrolyse et de Petrochimie	151.00	36,888	(27.0%)
Risma	225.00	16,802	(16.4%)
Label Vie	1,166.00	97,744	(12.6%)

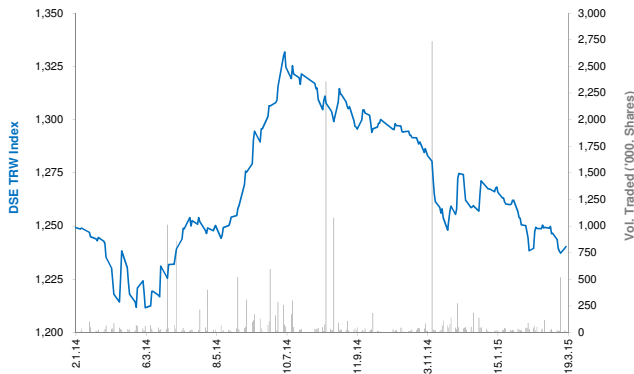
YTD Most Active Stocks by Volume	Price (MAD)	Volume ('000 Shrs)	YTD-15 Return
Douja Prom Addoha	33.78	15,850	(10.2%)
Itissalat Al-Maghrib	132.40	8,388	16.3%
Comp Suc Maroc Et De Raff	186.95	4,274	12.0%
Compagnie d'Assurances et de Reassurances ATLANTA	72.00	3,233	10.3%
Attijariwafa Bank	379.95	2,213	10.5%

YTD-15 Return: accounts in addition to the chg in price the cash & share dividends announced during the year.

Damascus Securities Exchange Daily Report

March 18, 2015

Index Performance relative to Volume



Sectors' Return & Valuation Multiples

	Market Cap. (SRY Mn)	MTD % Chg	P/E (X)	P/B (X)	Yield (%)
Damascus SE	129,190	(0.7%)	6.6	1.1	1.0%
Banking	115,403	(0.8%)	6.40	1.06	0.0%
Services	1,500	0.0%	NM	2.91	0.0%
Industrial	3,555	0.0%	6.69	1.55	0.0%
Insurance	8,194	0.0%	8.75	1.00	16.5%
Agricultural	539	0.0%	NM	3.81	0.0%

Sectors' MTD Return is based on the Change in market cap. and it might not conform with the benchmark return for each sector

Market Breadth

▲ 1 ▼ 0 = 23

Top 10 Stocks by Market Capitalization

	Market Cap. (SRY Mn)	Trailing P/E (X)	ROE* (%)
1- Banque Bemo Saudi Fransi	17,638	8.9	22.0%
2- Qatar National Bank - Syria	15,836	1.8	31.9%
3- Bank Audi Syria	13,238	41.8	4.3%
4- Arab Bank- Syria	9,301	8.3	15.9%
5- Bank Of Syria And Overseas	9,160	54.3	2.9%
6- The Int'l Bank For Trade & Finance	8,715	NM	0.0%
7- Syria International Islamic Bank	8,623	44.5	2.0%
8- Byblos Bank Syria	7,650	16.9	6.5%
9- Al Baraka Bank - Syria	6,262	2.4	34.2%
10- Cham Bank	4,703	2.0	31.2%

Subtotal 96,421 6.21 17.5%

* ROE is based on FY-2013 Net Profit & Shareholders' Equity as of 31-December-13

Today's Top Movers & Most Active Stocks

Best Return Performers	Price (SRY)	Daily Return
Syria International Islamic Bank	101.45	0.8%

Worst Return Performers	Price (SRY)	Daily Return
No Losers		

Most Active Stocks by Volume	Price (SRY)	Volume (Shrs)
Syria International Islamic Bank	101.45	7,795
Cham Bank	94.06	1,208
Al Baraka Bank - Syria	125.23	350
Syria Gulf Bank	117.16	200

Source: KAMCO Research

Market Return, Volatility & Trading Indicators

Market Return	Closing Value	DTD Chg.	DTD % Chg.	MTD % Chg.	YTD-15 % Chg.
DSE Weighted Index	1,240.31	0.69	0.1%	(0.7%)	(2.4%)
Market Cap (SRY Mn)	129,190	72	0.1%	(0.7%)	(2.4%)

Benchmark Volatility	Since Jan-14	Since Jan-13	Since Jan-12
DSE Weighted Index	5.2%	10.8%	9.6%

** Annualized Standard Deviation of Daily Returns

Trading Indicators	Today's Value	DTD Chg.	DTD % Chg.	Average Daily YTD-15	YTD-14
Volume (Shrs)	9,553	(9,946)	(51.0%)	42,650	619
Value Traded ('000 SRY)	970	(1,245)	(56.2%)	6,015	4,893
No. of Trades	11	(12.0)	(52.2%)	28	40

YTD-2015 Top Movers & Most Active Stocks

YTD Best Return Performers	Price (SRY)	YTD Vol. (Shrs)	YTD-15 Return
Alalhiah Vegetable Oil Company E.S.A	237.00	26,880	7.7%
National Insurance Company	150.25	750	4.9%
Arab Bank- Syria	184.18	106,417	1.2%
Byblos Bank Syria	125.00	2,213	0.4%

YTD Worst Return Performers	Price (SRY)	YTD Vol. (Shrs)	YTD-15 Return
Qatar National Bank Syria	105.57	227,159	(11.8%)
Cham Bank	94.06	152,106	(9.8%)
Syria International Islamic Bank	101.45	259,521	(7.5%)
Fransabank Syria	93.00	12,147	(3.1%)
Bank of Jordan Syria	87.50	10,329	(2.5%)

YTD Most Active Stocks by Volume	Price (SRY)	YTD Vol. (Shrs)	YTD-15 Return
Al Baraka Bank - Syria	125.23	700,316	(0.5%)
Syria International Islamic Bank	101.45	259,521	(7.5%)
Qatar National Bank Syria	105.57	227,159	(11.8%)
Cham Bank	94.06	152,106	(9.8%)
Bank Of Syria And Overseas	229.00	112,472	0.0%

YTD-15 Return: Is a total return which accounts in addition to the change in price the cash & share dividends announced during the year.

Disclaimer & Important Disclosures

KAMCO is authorized and fully regulated by the Capital Markets Authority ("CMA") and partially regulated by the Central Bank of Kuwait ("CBK")

This document is provided for informational purposes only. Nothing contained in this document constitutes investment, an offer to invest, legal, tax or other advice or guidance and should be disregarded when considering or making investment decisions. In preparing this document, KAMCO did not take into account the investment objectives, financial situation and particular needs of any particular person. Accordingly, before acting on this document, investors should independently evaluate the investments and strategies referred to herein and make their own determination of whether it is appropriate in light of their own financial circumstances and objectives. The entire content of this document is subject to copyright with all rights reserved. This research and the information contained herein may not be reproduced, distributed or transmitted in Kuwait or in any other jurisdiction to any other person or incorporated in any way into another document or other material without our prior written consent.

Analyst Certification

Each of the analysts identified in this report certifies, with respect to the sector, companies or securities that the individual analyses, that (1) the views expressed in this report reflect his or her personal views about all of the subject companies and securities and (2) no part of his or her compensation was, is or will be directly or indirectly dependent on the specific recommendations or views expressed in this report.

KAMCO Ratings

KAMCO investment research is based on the analysis of regional and country economics, industries and company fundamentals. KAMCO company research reflects a long-term (12-month) target price for a company or stock. The ratings bands are:

- * **Outperform:** Target Price represents expected returns $\geq 10\%$ in the next 12 months
- * **Neutral:** Target Price represents expected returns between -10% and $+10\%$ in the next 12 months
- * **Underperform:** Target Price represents an expected return of $<-10\%$ in the next 12 months

In certain circumstances, ratings may differ from those implied by a fair value target using the criteria above. KAMCO policy is to maintain up-to-date fair value targets on the companies under its coverage, reflecting any material changes to the analyst's outlook on a company. Share price volatility may cause a stock to move outside the rating range implied by KAMCO's fair value target. Analysts may not necessarily change their ratings if this happens, but are expected to disclose the rationale behind their view to KAMCO clients.

Any terms and conditions proposed by you which are in addition to or which conflict with this Disclaimer are expressly rejected by KAMCO and shall be of no force or effect. The information contained in this document is based on current trade, statistical and other public information we consider reliable. We do not represent or warrant that such information is fair, accurate or complete and it should not be relied upon as such. KAMCO has no obligation to update, modify or amend this document or to otherwise notify a recipient thereof in the event that any opinion, forecast or estimate set forth herein, changes or subsequently becomes inaccurate. The publication is provided for informational uses only and is not intended for trading purposes. The information on publications does not give rise to any legally binding obligation and/or agreement, including without limitation any obligation to update such information. You shall be responsible for conducting your own investigation and analysis of the information contained or referred to in this document and of evaluating the merits and risks involved in the securities forming the subject matter of this or other such document. Moreover, the provision of certain data/information in the publication may be subject to the terms and conditions of other agreements to which KAMCO is a party.

Nothing in this document should be construed as a solicitation or offer, or recommendation, to acquire or dispose of any investment or to engage in any other transaction, or to provide any investment advice or service. This document is directed at Professional Clients and not Retail Clients within the meaning of CMA rules. Any other persons in receipt of this document must not rely upon or otherwise act upon it. Entities and individuals into whose possession this document comes are required to inform themselves about, and observe such restrictions and should not rely upon or otherwise act upon this document where it is unlawful to make to such person such an offer or invitation or recommendation without compliance with any authorization, registration or other legal requirements.

Risk Warnings

Any prices, valuations or forecasts are indicative and are not intended to predict actual results, which may differ substantially from those reflected. The value of an investment may go up as well as down. The value of and income from any investment may fluctuate from day to day as a result of changes in relevant economic markets (including, without limitation, foreseeable or unforeseeable changes in interest rates, foreign exchange rates, default rates, prepayment rates, political or financial conditions, etc.).

Past performance is not indicative of future results. Any opinions, estimates, valuations or projections (target prices and ratings in particular) are inherently imprecise and a matter of judgment. They are statements of opinion and not of fact, based on current expectations, estimates and projections, and rely on beliefs and assumptions. Actual outcomes and returns may differ materially from what is expressed or forecasted. There are no guarantees of future performance. Certain transactions, including those involving futures, options, and other derivatives, give rise to substantial risk and are not suitable for all investors. This document does not propose to identify or to suggest all of the risks (direct or indirect) which may be associated with the investments and strategies referred to herein.

Conflict of Interest

KAMCO and its affiliates provide full investment banking services, and they and their directors, officers and employees, may take positions which conflict with the views expressed in this document. Salespeople, traders, and other professionals of KAMCO may provide oral or written market commentary or trading strategies to our clients and our proprietary trading desks that reflect opinions that are contrary to the opinions expressed in this document. Our asset management area, our proprietary trading desks and investing businesses may make investment decisions that are inconsistent with the recommendations or views expressed in this document. KAMCO may have or seek investment banking or other business relationships for which it will receive compensation from the companies that are the subject of this document. Facts and views presented in this document have not been reviewed by, and may not reflect information known to, professionals in other KAMCO business areas, including investment banking personnel. United Gulf Bank, Bahrain owns majority of KAMCO's shareholding and this ownership may create, or may create the appearance of, conflicts of interest.

No Liability & Warranty

KAMCO makes neither implied nor expressed representations or warranties and, to the fullest extent permitted by applicable law, we hereby expressly disclaim any and all express, implied and statutory representations and warranties of any kind, including, without limitation, any warranty as to accuracy, timeliness, completeness, and fitness for a particular purpose and/or non-infringement. KAMCO will accept no liability in any event including (without limitation) your reliance on the information contained in this document, any negligence for any damages or loss of any kind, including (without limitation) direct, indirect, incidental, special or consequential damages, expenses or losses arising out of, or in connection with your use or inability to use this document, or in connection with any error, omission, defect, computer virus or system failure, or loss of any profit, goodwill or reputation, even if expressly advised of the possibility of such loss or damages, arising out of or in connection with your use of this document. We do not exclude our duties or liabilities under binding applicable law.



KAMCO Investment Company – K.S.C (Public)

Al-Shaheed Tower, Khalid Bin Al-Waleed Street- Sharq

P.O. BOX : 28873, Safat 13149, State of Kuwait

Tel: (+965) 1852626 Fax: (+965) 22492395

Email : Kamcoird@kamconline.com