

MENA Markets Daily Report

March 17, 2015

	Country	Benchmark		Index Value	DTD Change	YTD 2015	FY 2014
MENA Countries							
In this Report...	Kuwait	KSE Price Index	▼	6,446.37	(0.4%)	(1.4%)	(13.4%)
Kuwait 2	Kuwait	KSE Weighted Index	▼	442.26	(0.5%)	0.8%	(3.1%)
Saudi Arabia 3	Kuwait	KAMCO TRW Index	▼	2,770.00	(0.3%)	0.5%	(1.9%)
UAE - Dubai 4	Saudi Arabia	TADAWUL All Share Index	▼	9,438.24	(2.0%)	13.3%	(2.4%)
UAE - Abu Dhabi 5	UAE - Dubai	DFM General Index	▼	3,519.55	(2.6%)	(6.7%)	12.0%
Qatar 6	UAE - Abu Dhabi	ADX General Index	▼	4,365.22	(1.3%)	(3.6%)	5.6%
Bahrain 7	Qatar	QE 20 Index	▼	11,761.11	(1.7%)	(4.3%)	18.4%
Oman 8	Bahrain	Bahrain All Share	▼	1,468.57	(0.6%)	2.9%	14.2%
Egypt 9	Oman	MSM 30 Index	▼	6,258.09	(0.3%)	(1.3%)	(7.2%)
Jordan 10	Egypt	EGX 30	▼	9,529.01	(2.0%)	6.7%	31.6%
Tunisia 11	Jordan	ASE Index	▼	2,181.48	(0.2%)	0.7%	4.8%
Lebanon 12	Lebanon	KAMCO Beirut SE TRW Index	▲	1,164.80	0.7%	6.6%	3.5%
Morocco 13	Tunisia	Tunisia Index	▼	5,363.36	(0.1%)	5.4%	16.2%
Syria 14	Morocco	MASI	▼	10,424.09	(0.5%)	8.4%	5.6%
	Syria	DSE Weighted Index	▲	1,246.58	0.0%	(1.9%)	1.7%
Emerging Markets							
	China	SSE Composite Index	▲	3,449.31	2.3%	8.3%	52.9%
	Russia	RUSSIAN RTS INDEX (\$)	▼	812.88	(2.5%)	2.8%	(45.2%)
	India	SENSEX	▼	28,437.71	(0.2%)	4.4%	29.9%
	Brazil	BOVESPA Stock Index	▲	48,848.21	0.5%	(2.3%)	(2.9%)
	Mexico	BOLSA Index	▼	44,002.29	(0.1%)	2.0%	1.0%
	Korea	KOSPI Index	▲	1,987.33	0.1%	5.6%	(4.8%)
	Taiwan	TAIEX Index	▼	9,512.91	(0.7%)	2.5%	8.1%
Global Markets							
	World	MSCI World Index	▲	1,740.09	1.2%	1.8%	2.9%
	Asia	MSCI Asia Pacific	▼	143.80	(0.1%)	4.3%	(2.5%)
	Europe	DJ Stoxx 600	▲	400.18	0.9%	16.8%	4.4%
	Europe	FTSEurofirst 300	▲	1,594.70	1.0%	16.5%	4.0%
	Emerging Markets	MSCI EM Index	▲	940.57	0.1%	(1.6%)	(4.6%)
	U.S.A	S&P 500	▲	2,081.19	1.4%	1.1%	11.4%
	U.S.A	DJIA	▲	17,977.42	1.3%	0.9%	7.5%
	U.S.A	NASDAQ Composite	▲	4,929.51	1.2%	4.1%	13.4%
	UK	FTSE 100	▲	6,804.08	0.9%	3.6%	(2.7%)
	Germany	DAX	▲	12,167.72	2.2%	24.1%	2.7%
	Japan	NIKKEI 225	▼	19,246.06	(0.0%)	11.5%	7.1%
	Hong Kong	HANG SENG INDEX	▲	23,949.55	0.5%	1.8%	1.3%
Commodities							
	Oil	OPEC Crude	▼	51.66	(2.8%)	(0.7%)	(49.6%)
	Oil	Brent	▼	53.94	(2.0%)	(10.3%)	(45.6%)
	Oil	Kuwait	▼	48.09	(5.4%)	(8.7%)	(51.7%)
	Natural Gas	NYMEX Natural Gas (USD/MMBtu)	▼	2.72	(0.4%)	(4.2%)	(33.8%)
	Gold	Gold Spot \$/Oz	▼	1,154.41	(0.1%)	(2.8%)	(1.4%)

Source: Bloomberg & KAMCO Research

Investment Research Department
Kamcoird@kamconline.com

P.O.Box 28873, Safat 13149 Kuwait
Tel: (965) 1852626, Extn: 1153 / 1146
Fax: (965) 22492395

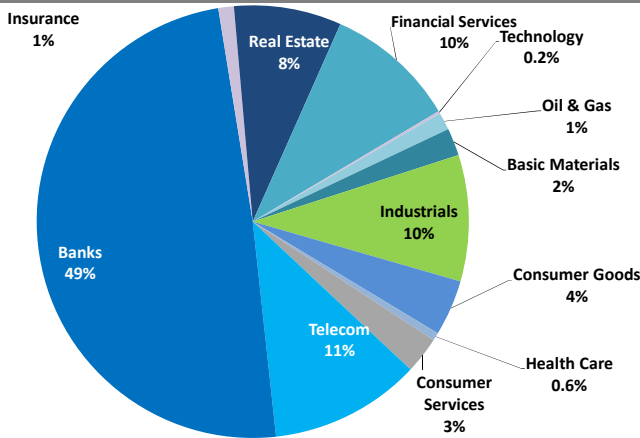
<http://www.kamconline.com>

KAMCO Investment Company - K.S.C
(Public)

Kuwait Market Daily Report

March 17, 2015

Sector Weight by Market Cap



Top 10 Kuwaiti Companies by Market Capitalization

Company Name	Market Cap. (Mn KWD)	P/E (X)	ROE* (%)
1- National Bank of Kuwait	4,271.8	17.5	9.4%
2- Kuwait Finance House	3,335.5	28.5	6.6%
3- Zain	2,204.0	10.4	13.2%
4- Ahli United Bank - Bahrain	1,416.8	10.9	13.9%
5- Kuwait Food Co. (Americana)	1,165.8	20.8	15.9%
6- Kuwait Projects Co.	1,002.0	21.9	8.9%
7- Agility	946.4	19.1	5.6%
8- Burgan Bank	927.1	18.1	9.3%
9- Commercial Bank of Kuwait	903.6	22.0	7.1%
10- Ahli United Bank - Kuwait	902.0	19.6	14.3%
Total	17,075	17.22	9.8%

*: ROE is calculated based on TTM 9M-2014 net profit & shareholders' equity as of 30-Sep-14

Top Movers and Most Active Stocks

Today's Top % Gainers	Close (KWD)	Change (KWD)	Percent Change
Kuwait Real Estate Holding Co.	0.030	0.002	7.1%
Kuwait Building Materials Manufacturing Co.	0.390	0.025	6.8%
Commercial Bank of Kuwait	0.640	0.040	6.7%
Mashaer Holding Co.	0.136	0.008	6.3%
Real Estate Trade Centers Co.	0.037	0.002	5.8%



Today's Top % Losers	Close (KWD)	Change (KWD)	Percent Change
Real Estate Asset Management Co.	0.120	(0.010)	(7.7%)
Al Mudon International Real Estate Co.	0.063	(0.005)	(7.4%)
Al TAMEER Real Estate Investment Co.	0.032	(0.003)	(7.2%)
Ektitab Holding Co.	0.038	(0.003)	(6.3%)
Credit Rating & Collection Co.	0.050	(0.003)	(5.7%)

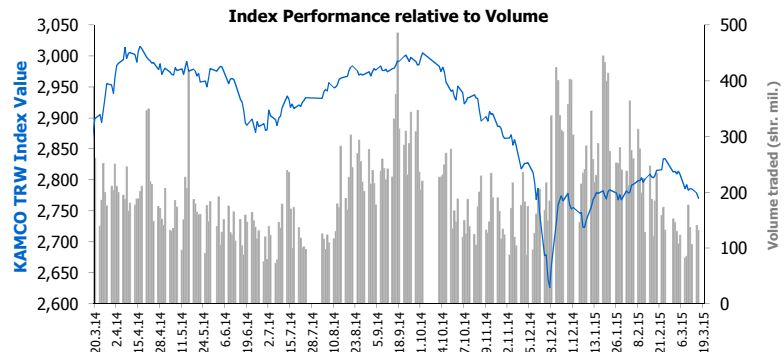
Today's Most Active by Volume	Close (KWD)	Change (KWD)	Volume (Shares)
Al Mudon International Real Estate Co.	0.063	(0.005)	22,544,944
First Investment Co.	0.087	(0.005)	14,997,822
Investors Holding Group Co.	0.030	(0.001)	11,674,110
The Commercial Real Estate Co.	0.096	(0.001)	7,607,873
Al-Madina for Finance & Investment Co.	0.035	0.000	6,960,000

Source: KAMCO Research

Market Capitalization - Sectors' Return

	Market Cap. (KWD Mn)	DTD %	MTD %	YTD %
Kuwaiti Stock Exchange	29,928.4	(0.4%)	(3.3%)	0.7%
Oil & Gas	391.0	(1.7%)	(3.9%)	(0.1%)
Basic Materials	611.9	(0.1%)	(1.1%)	(5.7%)
Industrials	2,824.9	(0.7%)	(0.3%)	3.5%
Consumer Goods	1,254.8	1.3%	(2.6%)	3.1%
Health Care	174.2	0.0%	(0.4%)	(5.3%)
Consumer Services	822.8	0.3%	(1.1%)	5.8%
Telecommunications	3,385.1	0.1%	(10.2%)	1.1%
Banks	14,711.6	(0.6%)	(2.8%)	0.8%
Insurance	348.4	(1.1%)	(0.5%)	(2.4%)
Real Estate	2,406.6	(0.2%)	(1.7%)	0.6%
Financial Services	2,939.6	(0.9%)	(3.5%)	(2.5%)
Technology	57.6	(0.5%)	2.1%	2.4%

Market Breadth		26		65	=	102
Benchmark Return	Closing	DTD	DTD	MTD	YTD	
	Value	Chg	% Chg	% Chg	% Chg	
KAMCO TRWI	2,770.00	(8.4)	(0.3%)	(2.3%)	0.5%	
KSE Price Index	6,446.37	(27.0)	(0.4%)	(2.3%)	(1.4%)	
KSE Weighted Index	442.26	(2.0)	(0.5%)	(3.4%)	0.8%	
Kuwait 15 Index	1,073.20	(8.3)	(0.8%)	(3.9%)	1.3%	
Market Cap (KWD Mn)	29,928	(135.2)	(0.4%)	(3.3%)	0.7%	



Market Trading Data and Volatility

Trading Indicators	Today's Value	DTD Chg	DTD % Chg	Average Daily YTD 2015	YTD 2014
Volume (Shrs Mn)	131.4	140.5	(6.5%)	222.5	312.4
Value Traded (KWD Mn)	15.9	13.7	16.5%	23.6	31.5
No. of Trades	3,543	4,040.0	(12.3%)	5,435	6,108

Market Volatility**	Volatility Since January:				
	2014	2013	2012	2011	2010
KAMCO TRW Index	6.9%	6.2%	5.9%	7.0%	7.7%
KSE Price Index	10.1%	11.0%	10.1%	9.8%	9.7%
KSE Weighted Index	10.1%	9.0%	8.6%	9.9%	10.7%

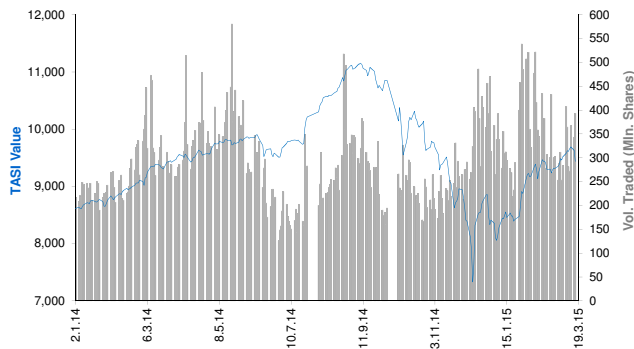
** Annualized Standard Deviation of Daily Returns

Today's Most Active by Value	Close (KWD)	Change (KWD)	Value (KWD)
Kuwait Finance House	0.770	(0.010)	2,444,679
Al Mudon International Real Estate Co.	0.063	(0.005)	1,454,677
kuwait Telecommunication Co.	0.840	(0.010)	1,405,254
First Investment Co.	0.087	(0.005)	1,339,943
National Bank of Kuwait	0.890	(0.010)	1,256,754

Saudi Tadawul Daily Report

March 17, 2015

Index Performance relative to Volume



Top 10 Stocks by Market Capitalization

	Market Cap. (SAR Mn)	P/E (X)	ROE* (%)
1- Saudi Basic Industries Corp	272,880	10.8	15.9%
2- National Commercial Bank	131,700	9.0	32.9%
3- Saudi Telecom	129,880	10.7	20.2%
4- Al-Rajhi Bank	101,010	14.7	17.0%
5- Kingdom Holding Co.	86,644	NM	2.5%
6- Jabal Omar Development Company	77,558	NM	NM
7- Saudi Electricity Co.	71,165	15.0	7.7%
8- Samba Financial Group	58,884	12.3	12.6%
9- Riyadh Bank	54,030	12.5	12.4%
10- AL-Marai Co.	51,324	31.7	15.1%

Subtotal	1,035,075	13.76	15.4%
----------	-----------	-------	-------

* ROE is based on TTM 9M-2014 Net Profit & Shareholders' Equity as of 30-September-14

Today's Top Movers and Most Active Stocks

Best Return Performers	Price (SAR)	Daily Return	Value (SAR 000's)
Saudi Arabian Cooperative Ins. Co.	48.70	9.8%	128,966
Knowledge Economic City	25.94	6.2%	486,221
ACE Arabia Cooperative Insurance Co.	81.49	4.9%	148,219
Al Ahlia Ins. Co.	15.49	3.7%	69,544
Saudi Enaya Cooperative Insurance Co.	32.50	3.1%	135,008

Worst Return Performers	Price (SAR)	Daily Return	Value (SAR 000's)
Rabigh Refining and Petrochemical Co.	22.66	(8.6%)	237,367
Saudi Industrial Investment Group	25.02	(6.4%)	118,607
Food Products Co.	39.93	(5.4%)	34,105
Tourism Enterprise Co.	48.31	(5.1%)	30,212
Al-Ahsa Development Co.	15.74	(5.1%)	79,055

Most Active Stocks By Volume	Price (SAR)	Daily Return	Volume ('000 Shrs)
Alinma Bank	23.45	(3.4%)	56,521
Dar Al Arkan Real Estate Dev. Co.	9.75	(1.7%)	42,333
Saudi Kayan	12.32	(4.8%)	24,445
Knowledge Economic City	25.94	6.2%	19,148
Saudi Arabian Mining Co.	43.88	(1.6%)	14,474

Source: KAMCO Research

Sectors' Return & Valuation Multiples

	Market Cap. (SAR Mn)	MTD Return	P/E (X)	P/BV (X)	Yield (%)
Saudi Stock Exchange	2,024,548	(0.3%)	16.1	2.2	3.0%
Banks & Financial	566,253	(3.4%)	12.2	2.0	1.8%
Petrochemical Industries	460,853	(0.4%)	12.2	1.9	5.1%
Cement	92,559	(0.5%)	15.9	3.1	5.9%
Retail	92,433	1.1%	31.9	6.9	1.5%
Energy & Utilities	73,604	(10.3%)	15.1	1.2	4.1%
Agric. & Food Ind.	130,359	0.5%	26.3	4.6	1.9%
Telecom	167,854	(0.1%)	12.3	1.9	4.9%
Insurance	48,830	3.4%	NM	2.9	0.1%
Multi-Inv.	94,390	10.4%	NM	2.5	2.1%
Indust. Inv.	77,888	2.0%	30.8	2.3	1.2%
Bldg. & Const.	29,519	0.9%	38.3	2.6	2.3%
Real Estate Dev.	140,784	10.2%	50.5	2.7	0.6%
Transport	20,699	4.9%	18.3	2.0	2.2%
Media & Publishing	4,017	(1.9%)	NM	1.8	0.0%
Hotel & Tourism	24,507	(12.5%)	15.2	4.7	3.0%

Sectors' MTD Return is based on the Change in market cap. and it might not conform with the benchmark return for each sector

Market Return, Volatility & Trading Indicators

Market Return	Closing Value	DTD Chg	DTD % Chg	MTD % Chg	YTD-15 % Chg
Tadawul All Share Index	9,438.24	(190.4)	(2.0%)	1.3%	13.3%
Market Cap (SAR Mn)	2,024,548	(40,384.9)	(2.0%)	(0.3%)	11.5%

Benchmark Volatility**	Since Jan-14	Since Jan-13	Since Jan-12	Since Jan-11	Since Jan-10
Tadawul All Share Index	20.3%	16.7%	15.6%	16.7%	16.5%

** Annualized Standard Deviation of Daily Returns

Trading Indicators	Today's Value	DTD Chg	DTD % Chg	Average Daily YTD-15	YTD-14
Volume (Mn Shares)	393	50	14.5%	351	268
Value Traded (SAR Mn)	11,785	1,885	19.0%	8,979	7,252
No. of Trades	195,500	44,141	29.2%	150,452	121,196

Market Breadth	▲ 15 ▼ 144 = 8
----------------	----------------

YTD-2015 Top Movers and Most Active Stocks

YTD-15 Best Return Performers	Price (SAR)	YTD Val (SAR Mn)	YTD Vol ('000 Shrs)	YTD-15 Return
Saudi United Cooperative Ins. Co.	23.37	1,456	59,803	160.0%
Wataniya Insurance Co.	104.30	1,222	15,589	65.5%
Buruj Cooperative Insurance Co.	54.33	1,772	36,603	64.2%
The Co for Cooperative Ins.	81.05	3,587	51,288	62.0%
Jabal Omar Development Co.	83.45	12,440	178,442	59.5%

YTD-15 Worst Return Performers	Price (SAR)	YTD Val (SAR Mn)	YTD Vol ('000 Shrs)	YTD-15 Return
AXA Cooperative Insurance Co.	21.62	1,850	61,410	(38.5%)
SABB	36.62	861	16,527	(36.9%)
Middle East Specialised Cables	16.81	8,257	404,558	(23.3%)
Union Cooperative Assurance Co.	16.24	1,454	74,390	(19.8%)
Al-Rajhi Co. for Cooperative Ins.	29.07	1,129	27,435	(18.3%)

YTD-15 Most Active Stocks by Volume	Price (SAR)	YTD Val (SAR Mn)	YTD Vol ('000 Shrs)	YTD-15 Return
Dar Al Arkan Real Estate Dev. Co.	9.75	30,037	3,127,454	20.2%
Alinma Bank	23.45	43,242	1,960,307	16.0%
ZAIN KSA	11.71	8,977	1,147,070	(2.0%)
Saudi Kayan	12.32	14,208	1,104,110	11.9%
Saudi Arabian Mining Co.	43.88	26,541	698,594	44.6%

YTD-15 Return: Is a total return which accounts in addition to the change in price the cash & share dividends announced during the year.

Dubai Financial Market Daily Report

March 17, 2015

Index Performance relative to Volume



Top 10 Stocks by Market Capitalization

	Market Cap (AED Mn)	P/E (X)	ROE* (%)
1- Emirates NBD	48,853	10.7	10.0%
2- EMAAR Properties	47,326	14.8	7.7%
3- EMAAR MALLS GROUP	35,139	17.2	15.2%
4- Emirates Integrated Telecom. (DU)	23,314	10.8	29.6%
5- Dubai Islamic Bank	22,853	9.4	16.1%
6- Mashreq Bank	20,289	9.0	14.5%
7- Commercial Bank of Dubai	15,247	11.9	15.2%
8- Dubai Financial Market	13,680	18.8	8.6%
9- Arabtec Holding P.J.S.C.	12,087	28.0	7.4%
10- Dubai Investment	8,749	6.8	13.2%
Subtotal	264,825	11.73	12.6%

* ROE is based on TTM 9M-2014 Net Profit & Shareholders' Equity as of 30-September-14

Today's Top Movers and Most Active Stocks

Best Return Performers	Price (AED)	Daily Return	Value Traded (AED)
Int'l Financial Advisors Co.	0.515	7.5%	54,999
Al Salam Bank - Bahrain	1.140	2.7%	1,367,386
Hits Telecom Holding Co.	0.383	2.1%	52,950
Ektitab Holding Co.	0.539	1.9%	345,554
Amanat Holdings	0.829	1.1%	2,686,929

Worst Return Performers	Price (AED)	Daily Return	Value Traded (AED)
Commercial Bank of Dubai	6.120	(28.0%)	2,033,125
Ajman Bank	2.040	(9.3%)	1,568,113
Gulf General Investment Co.	0.637	(7.7%)	1,294,177
Takaful Emarat	1.210	(7.6%)	575,536
Gulf Navigation Holding	0.261	(7.4%)	1,489,835

Most Active Stocks by Volume	Price (AED)	Daily Return	Volume Traded ('000 Shrs)
Gulf Finance House	0.249	(3.9%)	257,913
DAMAC Properties Dubai	2.260	(3.8%)	22,197
EMAAR Properties	6.610	(4.8%)	22,055
Union Properties	0.998	(1.2%)	19,429
Dubai Parks And Resorts	0.785	(1.9%)	14,685

Source: KAMCO Research

Sectors' Return & Valuation Multiples

	Market Cap. (AED Mn)	MTD % Chg	P/E (X)	P/BV (X)	Yield (%)
Dubai Financial Market	332,124	(8.2%)	11.8	1.3	2.2%
Banking	119,444	(10.0%)	10.7	1.2	2.7%
Consumer Staples	8,182	4.3%	66.7	3.3	0.7%
Investment & Financial	25,585	(10.9%)	14.5	1.1	2.5%
Insurance	6,014	(1.1%)	6.2	0.6	2.3%
Industrial	4,290	(2.2%)	19.2	0.5	2.1%
Real Estate & Construction	115,489	(9.4%)	NM	1.5	0.8%
Telecommunication	23,590	(0.0%)	11.3	2.9	6.0%
Transportation	26,705	(5.2%)	21.9	1.4	3.3%
Services	2,824	1.3%	2.4	0.6	1.2%

Sectors' MTD Return is based on the Change in market cap. and it might not conform with the benchmark return for each sector

Market Breadth		6		27	=	27
-----------------------	---	----------	---	-----------	----------	-----------

Market Return, Volatility & Trading Indicators

Market Return	Closing Value	DTD Chg	DTD % Chg	MTD % Chg	YTD-15 % Chg
DFM General Index	3,519.55	(94.00)	(2.6%)	(8.9%)	(6.7%)
Market Cap (AED Mn)	332,124	(12,441)	(3.6%)	(8.2%)	(0.9%)

Benchmark Volatility**	Volatility Since:				
	Jan-2014	Jan-2013	Jan-2012	Jan-2011	Jan-2010
DFM General Index	36.5%	30.8%	27.3%	25.4%	24.6%

** Annualized Standard Deviation of Daily Returns

Trading Indicators	Today's Value	DTD Chg	DTD % Chg	Average Daily YTD-15	YTD-14
Volume (Mn Shares)	439	179.6	69.2%	396	995
Value Traded (AED Mn)	477	126.6	36.2%	645	1,809
No. of Trades	5,948	1,608	37.1%	6,663	10,946

YTD-2015 Top Movers and Most Active Stocks

YTD-15 Best Return Performers	Price (AED)	Value Traded (AED '000)	Volume ('000 Shrs)	YTD-15 Return
Takaful Emarat	1.210	124,016	105,222	51.3%
Arab Insurance Group	2.020	642	329	30.3%
United Kaipara Dairies Co.	650.000	4	0	25.0%
Takaful House	0.699	15,367	22,424.964	16.7%
Gulfa Mineral Water & Processing Industrie	2.890	40	14	14.7%

YTD-15 Worst Return Performers	Price (AED)	Value Traded (AED '000)	Volume ('000 Shrs)	YTD-15 Return
Int'l Financial Advisors Co.	0.515	1,930	3,701	(39.4%)
Gulf Navigation Holding	0.261	110,966	313,922	(33.4%)
Ajman Bank	2.040	57,752	22,613	(27.1%)
Drake and Scull International	0.687	369,253	436,454	(23.2%)
Deyaar Development	0.668	1,300,401	1,595,530	(21.4%)

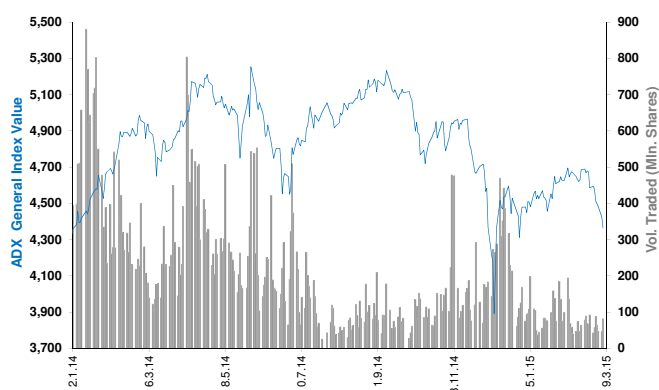
YTD-15 Most Active Stocks by Volume	Price (AED)	Value Traded (AED '000)	Volume ('000 Shrs)	YTD-15 Return
Gulf Finance House	0.249	1,820,114	5,976,224	(16.7%)
Arabtec Holding P.J.S.C.	2.750	6,377,851	2,096,723	(6.1%)
Union Properties	0.998	2,384,129	2,049,215	(17.5%)
Deyaar Development	0.668	1,300,401	1,595,530	(21.4%)
DAMAC Properties Dubai	2.260	3,039,261	1,128,502	(19.0%)

YTD-15 Return: Is a total return which accounts in addition to the change in price the cash & share dividends announced during the year.

Abu Dhabi Securities Exchange Daily Report

March 17, 2015

Index Performance relative to Volume



Top 10 Stocks by Market Capitalization

	Market Cap. (AED Mn)	P/E (X)	ROE* (%)
1- Emirates Telecom. Co.	97,246	11.9	20.1%
2- First Gulf Bank	61,425	11.2	16.9%
3- National Bank Of Abu Dhabi	60,622	11.5	14.2%
4- Abu Dhabi Commercial Bank	35,140	9.2	14.9%
5- AL DAR Properties Co.	17,376	8.8	11.3%
6- Union National Bank	15,683	8.3	11.5%
7- Abu Dhabi Islamic Bank	14,881	8.9	12.5%
8- National Bank of Ras Al-Khaimah	13,829	10.1	20.2%
9- United Arab Bank	8,021	12.6	22.4%
10- National Bank of Fujairah	5,929	12.5	14.7%

Subtotal	330,152	10.72	15.7%
----------	---------	-------	-------

* ROE is based on TTM 9M-2014 Net Profit & Shareholders' Equity as of 30-September-14

Today's Top Movers and Most Active Stocks

Best Return Performers	Price (AED)	Daily Return	Value (AED)
United Arab Bank	7.00	20.1%	-
Arkan Building Materials Co.	1.23	15.0%	943,871
Ras Al Khaimah Cement Co.	0.88	4.8%	131,084
Sudan Telecom. Co.	0.75	1.4%	599,904
Ras Al Khaimah White Cement	1.50	0.7%	143,840

Worst Return Performers	Price (AED)	Daily Return	Value (AED)
Al Khaleej Investment Co.	3.21	(9.8%)	77,040
Finance House	3.10	(7.5%)	77,007
Abu Dhabi National Energy Co. (TAQA)	0.70	(6.7%)	33,949
Gulf Cement Co.	1.09	(6.0%)	118,930
National Bank Of Abu Dhabi	12.80	(5.5%)	9,375,248

Most Active Stocks by Volume	Price (AED)	Daily Return	Volume ('000 Shrs)
AL DAR Properties Co.	2.21	(5.2%)	28,185
Eshraq Properties Co.	0.76	(1.3%)	11,694
Abu Dhabi Islamic Bank	4.96	(0.4%)	10,433
Dana Gas	0.43	(2.3%)	5,480
Umm Al-Qaiwain Cement Ind. Co.	1.20	0.0%	3,711

Source: KAMCO Research

Sectors' Return & Valuation Multiples

	Market Cap. (AED Mn)	MTD % Chg	P/E (X)	P/BV (X)	Dividend Yield (%)
ADX	447,003	(6.5%)	12.2	1.4	4.4%
Banks	236,379	(8.9%)	10.6	1.5	4.0%
Inv. & Financial Services	5,591	(5.9%)	48.4	1.3	3.4%
Real Estate	20,583	(14.8%)	8.7	0.9	3.9%
Energy	7,196	(6.6%)	NM	0.5	8.7%
Consumer Staples	5,581	(0.4%)	51.4	1.9	1.1%
Industrial	13,184	5.8%	14.9	0.9	3.6%
Insurance	9,414	(1.2%)	1	1.0	4.2%
Telecommunication	138,129	(2.8%)	12.6	2.1	5.2%
Services	10,947	0.0%	14.7	0.4	3.4%

Sectors' MTD Return is based on the Change in market cap. and it might not conform with the benchmark return for each sector

Market Breadth	▲	5	▼	19	=	41
----------------	---	---	---	----	---	----

Market Return, Volatility & Trading Indicators

Market Return	Closing Value	DTD Chg	DTD % Chg	MTD % Chg	YTD-15 % Chg
ADX General Index	4,365.22	(59.53)	(1.3%)	(6.8%)	(3.6%)
Market Cap (AED Mn)	447,003	(5,554)	(1.2%)	(6.5%)	(3.6%)

Benchmark Volatility**	Volatility Since:				
	Jan-2014	Jan-2013	Jan-2012	Jan-2011	Jan-2010
ADX General Index	21.3%	15.9%	13.5%	12.7%	12.1%

** Annualized Standard Deviation of Daily Returns

Trading Indicators	Today's Value	DTD Chg	DTD % Chg	Average Daily YTD-15	YTD-14
Volume (Mn Shares)	82	34.6	73.2%	87	363.8
Value Traded (AED Mn)	252	122.5	94.6%	217	862.6
No. of Trades	1,838	434	30.9%	1,720	4,490

YTD-2015 Top Movers and Most Active Stocks

YTD-15 Best Return Performers	Price (AED)	YTD-Val ('000 AED)	Volume ('000 Shrs)	YTD-15 Return
Ras Al Khaimah Ceramic Co.	3.80	159,628	45,195	26.7%
National Corp for Tourism & Hotels	6.00	1,590	264	20.7%
Al Khaleej Investment Co.	3.21	171	54	18.9%
Ras Al Khaimah Poultry & Feeding Co.	1.45	65	45	14.2%
Sharjah Cement & Industrial Dev. Co.	1.18	1,270	1,110	13.5%

YTD-15 Worst Return Performers	Price (AED)	YTD-Val ('000 AED)	Volume ('000 Shrs)	YTD-15 Return
National Takaful Co. (Watania)	0.75	1,256	1,607	(27.9%)
Abu Dhabi Ship Building Co.	1.44	3,302	1,836	(24.2%)
Abu Dhabi National Co. for Bldg. Materials	0.64	10,501	15,404	(20.0%)
National Bank of Umm Al-Qaiwain	3.00	1,769	539	(20.0%)
Insurance House	0.81	58	67	(19.0%)

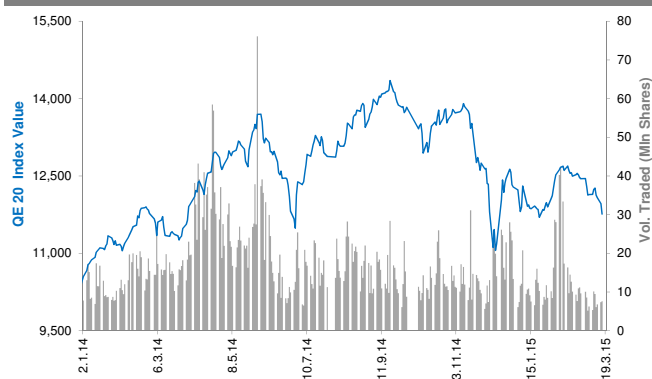
YTD-15 Most Active Stocks by Volume	Price (AED)	YTD-Val ('000 AED)	Volume ('000 Shrs)	YTD-15 Return
Eshraq Properties Co.	0.76	1,226,979	1,513,233	(3.8%)
AL DAR Properties Co.	2.21	2,472,682	967,592	(16.6%)
Ras Al Khaimah Properties	0.72	378,118	497,339	(2.7%)
Dana Gas	0.43	221,058	465,164	(14.0%)
Waha Capital Co.	2.80	755,061	248,594	(0.7%)

YTD-15 Return: Is a total return which accounts in addition to the change in price the cash & share dividends announced during the year.

Qatar Exchange Daily Report

March 17, 2015

Index Performance relative to Volume



Sectors' Return & Valuation Multiples

	Market Cap. (QAR Mn)	MTD % Chg	P/E (X)	P/B (X)	Yield (%)
Qatar Exchange	640,888	(5.1%)	15.1	2.1	3.5%
Banking & Finance	259,545	(4.4%)	13.7	2.2	3.7%
Goods & Consumer Services	28,569	(5.6%)	15.6	2.3	2.9%
Industrial	184,911	(6.8%)	17.2	3.2	4.5%
Insurance	22,772	(0.3%)	8.1	1.8	2.0%
Real Estate	69,057	(4.5%)	19.5	1.2	1.7%
Telecom	48,027	(7.0%)	19.6	1.6	2.7%
Transport	28,007	(1.3%)	14.1	1.5	3.8%

Sectors' MTD Return is based on the Change in market cap. and it might not conform with the benchmark return for each sector

Market Breadth

▲ 0 ▼ 35 = 8

Top 10 Stocks by Market Capitalization

	Market Cap. (QAR Mn)	P/E (X)	ROE* (%)
1- Qatar National Bank	137,497	13.3	18.8%
2- Industries Qatar	84,156	13.2	19.9%
3- Ezdan Holding Group Co.	40,636	29.7	4.4%
4- Mesaieed Petrochemical Holding Co.	34,109	17.2	14.1%
5- Masraf Al Rayan	33,938	18.1	17.3%
6- Ooredoo (formerly Q-Tel)	33,698	13.0	10.5%
7- Qatar Islamic Bank	23,157	15.5	12.4%
8- Qatar Electricity & Water Co.	20,460	13.6	23.0%
9- Commercial Bank of Qatar	20,459	11.3	12.2%
10- Barwa Real Estate Co.	18,561	11.7	11.5%

Subtotal 446,670 13.11 16.8%

* ROE is based on TTM 9M-2014 Net Profit & Shareholders' Equity as of 30-September-14

Today's Top Movers and Most Active Stocks

Best Return Performers	Price (QAR)	Daily Return	Value (QAR)
No Gainers			

Worst Return Performers	Price (QAR)	Daily Return	Value (QAR)
Qatar International Islamic Bank	79.80	(8.6%)	13,067,609
Zad Holding Co.	88.00	(7.3%)	825,205
Qatar Fuel Co. (Woqod)	188.40	(5.8%)	13,029,317
Islamic Holding Group	112.00	(5.1%)	6,186,023
Diala Brokerage & Inv. Hldg. Co.	37.55	(3.7%)	10,309,162

Most Active Stocks by Volume	Price (QAR)	Daily Return	Volume (Shares)
Vodafone Qatar	16.95	(2.9%)	1,191,736
Barwa Real Estate Co.	47.70	(2.3%)	983,083
The Commercial Bank of Qatar	68.90	(0.9%)	691,174
Masraf Al Rayan	45.25	(0.5%)	482,994
Ezdan Holding Group Co.	15.32	(0.1%)	475,941

Source: KAMCO Research

Market Return, Volatility & Trading Indicators

Market Return	Closing Value	DTD Chg	DTD % Chg	MTD % Chg	YTD-15 % Chg
QE 20 Index	11,761.11	(203.04)	(1.7%)	(5.5%)	(4.3%)
Market Cap (QAR Mn)	640,888	(11,095)	(1.7%)	(5.1%)	(5.3%)

Benchmark Volatility**	QE 20 Volatility Since:				
	Jan-2014	Jan-2013	Jan-2012	Jan-2011	Jan-2010
QE 20 Index	17.2%	16.6%	14.2%	14.3%	14.4%

** Annualized Standard Deviation of Daily Returns

Trading Indicators	Today's Value	DTD Chg	DTD % Chg	Average Daily YTD-15	YTD-14
Volume ('000 Shares)	7,614	241	3.3%	12,559	13,721
Value Traded (QAR Mn)	381	88	30.2%	531	645
No. of Trades	5,138	428	9.1%	6,286	6,969

YTD-2015 Top Movers and Most Active Stocks

YTD-15 Best Return Performers	Price (QAR)	YTD Value (QAR 000's)	YTD Volume (Shares 000's)	YTD-15 Return
Qatar General Insurance & Reins. Co.	77.90	47,262	767	32.0%
Medicare Group	150.00	339,210	2,456	28.2%
Qatar Industrial Manufacturing Co.	45.00	89,356	1,831	21.1%
Aamal Co.	18.11	394,980	23,570	19.2%
Barwa Real Estate Co.	47.70	3,554,145	78,074	13.8%

YTD-15 Worst Return Performers	Price (QAR)	YTD Value (QAR 000's)	YTD Volume (Shares 000's)	YTD-15 Return
Industries Qatar	139.10	2,140,824	13,970	(17.2%)
Ooredoo	105.20	479,185	4,167	(15.1%)
Salam International Investment	13.79	235,509	15,263	(13.0%)
Diala Brokerage & Inv. Hldg. Co.	37.55	400,068	8,994	(12.3%)
Al Khaleej Takaful Group	44.80	240,972.4	4,528.89	(11.8%)

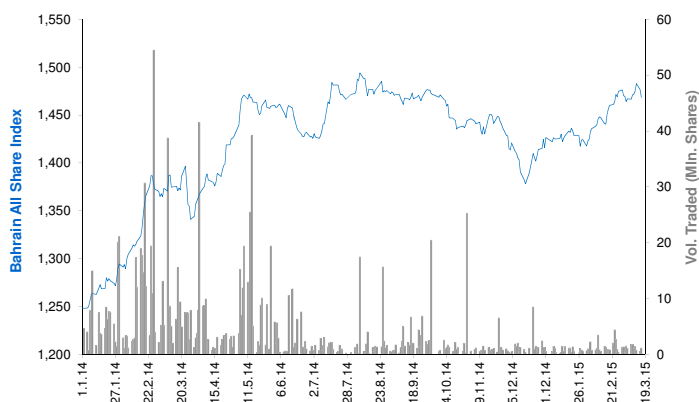
YTD-15 Most Active Stocks by Vol.	Price (QAR)	YTD Value (QAR 000's)	YTD Volume (Shares 000's)	YTD-15 Return
Vodafone Qatar	16.95	1,961,797	112,393	3.0%
Barwa Real Estate Co.	47.70	3,554,145	78,074	13.8%
Ezdan Holding Group Co.	15.32	1,256,148	76,896	2.7%
Mazaya Qatar R.E Development Co.	18.61	950,451	47,573	(2.8%)
Masraf Al Rayan	45.25	1,258,138	27,174	2.4%

YTD-15 Return: Is a total return which accounts in addition to the change in price the cash & share dividends announced during the year.

Bahrain Bourse Daily Report

March 17, 2015

Index Performance relative to Volume



Sectors' Return & Valuation Multiples

	Market Cap. (BHD Mn)	MTD % Chg	P/E (X)	P/B (X)	Yield (%)
Bahrain Bourse	8,342	(0.4%)	12.4	1.0	3.4%
Commercial Banks	3,637	(0.3%)	13.0	1.5	3.9%
Investment	2,485	(0.5%)	14.3	0.8	0.8%
Insurance	180	2.0%	11.2	0.9	2.3%
Service	1,099	(0.2%)	12.0	1.1	5.2%
Hotel & Tourism	224	6.9%	12.6	1.1	3.8%
Industrial	717	(2.9%)	7.8	0.8	7.3%

Sectors' MTD Return is based on the Change in market cap. and it might not conform with the benchmark return for each sector

Market Breadth

▲ 1 ▼ 5 = 34

Top 10 Stocks by Market Capitalization

	Market Cap. (BHD Mn)	P/E (X)	ROE* (%)
1- Ahli United Bank (Price in USD)	1,845	10.79	14.1%
2- Arab Banking Corp. (Price in USD)	891	9.16	6.5%
3- National Bank of Bahrain	890	16.66	13.6%
4- Aluminum Bahrain	696	7.68	10.2%
5- Bahrain Telecommunications Co.	575	13.09	8.3%
6- Bank of Bahrain and Kuwait	461	9.64	12.8%
7- Al Baraka Banking (Price in USD)	342	6.15	11.1%
8- United Gulf Bank	325	53.62	3.5%
9- Al Salam Bank	255	16.41	4.9%
10- Gulf Finance House (Price in USD)	226	NM	NM
Subtotal	6,507	11.25	9.4%

* ROE is based on TTM 9M 2014 Net Profit & Shareholders' Equity as of 30-Sep-14

Today's Top Movers and Most Active Stocks

Best Return Performers	Price (BHD)	Daily Return	Value (BHD)
Al-Ahli Insurance Co.	0.312	20.0%	3,764

Worst Return Performers	Price (BHD)	Daily Return	Value (BHD)
Seef Properties	0.202	(2.9%)	9,100
Ahli United Bank (USD)	0.815	(1.8%)	128,120
Aluminum Bahrain	0.490	(1.6%)	33,730
Al Salam Bank	0.119	(0.8%)	48,538
Bahrain Car Park Co.	0.182	(0.5%)	3,640

Most Active Stocks by Volume	Price (BHD)	Daily Return	Volume (Shares)
Ahli United Bank (USD)	0.815	(1.8%)	419,000
Al Salam Bank	0.119	(0.8%)	410,568
AlKhaleeji Commercial Bank	0.044	0.0%	110,825
Aluminum Bahrain	0.490	(1.6%)	68,500
Seef Properties	0.202	(2.9%)	45,000

Source: KAMCO Research

Market Return, Volatility & Trading Indicators

Market Return	Closing Value	DTD Chg	DTD % Chg	MTD % Chg	YTD-15 % Chg
Bahrain All Share Index	1,468.57	(8.18)	(0.6%)	(0.4%)	2.9%
Market Cap (BHD Mln)	8,341.98	(41.14)	(0.5%)	(0.4%)	3.1%

Benchmark Volatility**	Volatility Since:				
	Jan-2014	Jan-2013	Jan-2012	Jan-2011	Jan-2010
Bahrain All Share Index	7.14%	6.9%	6.8%	7.3%	7.8%

** Annualized Standard Deviation of Daily Returns

Trading Indicators	Today's Value	DTD Chg	DTD % Chg	Average Daily YTD-15	YTD-14
Volume ('000 Shares)	1,122	661	143.3%	1,104	8,370
Value Traded (BHD '000)	236	177	303.0%	306	1,596
No. of Trades	73	49.0	204.2%	45	110

YTD-2015 Top Movers and Most Active Stocks

YTD-15 Best Return Performers	Price (BHD)	YTD-Val (BHD '000)	YTD Vol (Shares)	YTD-15 Return
Esterad Investment Co.	0.240	90	406,404	20.0%
Investcorp Bank (USD)	601.000	485	2,705	19.8%
Gulf Hotels Group	0.940	83	93,614	18.9%
Arab Insurance Group (USD)	0.600	381	1,756,834	18.8%
Bahrain Commercial Facilities Co.	0.825	36	46,374	17.9%

YTD-15 Worst Return Performers	Price (BHD)	YTD-Val (BHD '000)	YTD Vol (Shares)	YTD-15 Return
Bank of Bahrain and Kuwait	0.426	3,121	6,824,398	(17.6%)
Al Salam Bank	0.119	1,283.8	9,963,817	(9.2%)
Zain Bahrain B.S.C	0.185	81	416,967	(7.5%)
Aluminum Bahrain	0.490	1,217	2,446,804	(4.9%)
Bah. Ship. Repairing and Engineering Co.	2.000	4	2,000	(4.8%)

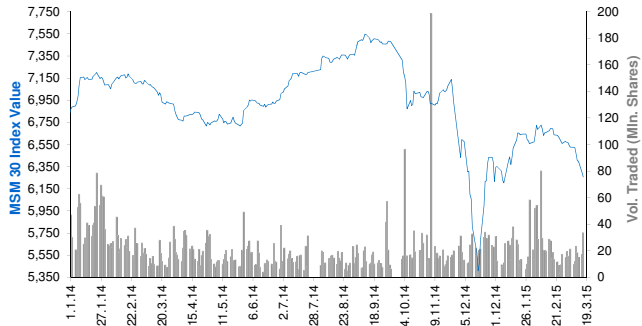
YTD-15 Most Active Stocks by Volume	Price (BHD)	YTD-Val (BHD '000)	YTD Vol (Shares)	YTD-15 Return
Ahli United Bank (USD)	0.815	5,123	16,580,575	5.0%
Al Salam Bank	0.119	1,284	9,963,817	(9.2%)
Bank of Bahrain and Kuwait	0.426	3,121	6,824,398	(17.6%)
AlKhaleeji Commercial Bank	0.044	198	4,328,681	2.3%
ITHMAR Bank (USD)	0.155	252	3,987,339	(3.1%)

YTD-15 Return: Is a total return which accounts in addition to the change in price the cash & share dividends announced during the year.

Muscat Securities Market Daily Report

March 17, 2015

Index Performance relative to Volume



Sectors' Return & Valuation Multiples

	Market Cap. (OMR Mn)	MTD % Chg	P/E (X)	P/B (X)	Yield (%)
Muscat Securities Mkt	7,660	(4.2%)	10.05	1.44	3.9%
Financial	3,526	(6.5%)	8.42	1.08	3.5%
Industrial	1,276	(2.2%)	12.81	1.66	4.8%
Services	2,858	(2.2%)	11.73	2.24	4.1%

Sectors' MTD Return is based on the Change in market cap. and it might not conform with the benchmark return for each sector

Market Breadth	▲	4	▼	18	=	31
----------------	---	---	---	----	---	----

Top 10 Stocks by Market Capitalization

	Market Cap. (OMR Mn)	P/E (X)	ROE* (%)
1- Oman Telecom Co.	1,305	10.39	23.1%
2- Bank Muscat	1,192	6.75	13.8%
3- Bank Dhofar	473	11.92	12.5%
4- Ooredoo	445	11.26	20.5%
5- National Bank of Oman	385	8.15	13.5%
6- Raysut Cement	349	12.99	19.8%
7- HSBC Bank Oman	260	34.23	2.5%
8- Ahli Bank	259	10.74	13.0%
9- Bank Sohar	223	6.86	17.1%
10- Shell Oman Marketing	200	17.95	36.3%

Subtotal	5,262	9.60	15.2%
----------	-------	------	-------

* ROE is based on TTM 9M-2014 Net Profit & Shareholders' Equity as of 30-Sep-14

Today's Top Movers and Most Active Stocks

Best Return Performers	Price (OMR)	Daily Return	Value (OMR)
United Finance	0.146	5.8%	3,606,490
Al Sharqia Inv. Holding	0.157	1.3%	22,300
Oman & Emirates Investment	0.123	0.8%	16,410
Bank Dhofar	0.352	0.6%	4,160

Worst Return Performers	Price (OMR)	Daily Return	Value (OMR)
Al Jazeera Services Co.	0.338	(5.1%)	14,550
Al Madina Investment company	0.063	(3.1%)	440
Al Anwar Ceramic Tiles Co.	0.460	(3.0%)	278,820
Oman Cable Industry	1.910	(2.6%)	211,240
Oman Investment & Finance Co.	0.205	(2.4%)	51,730

Most Active Stocks by Volume	Price (OMR)	Daily Return	Volume (Shares)
United Finance	0.146	5.8%	24,055,484
Al Anwar Holding	0.240	(0.8%)	2,276,241
Bank Muscat	0.546	(1.4%)	2,247,079
Gulf Investment Services	0.145	(2.0%)	1,457,080
Oman Cement Co.	0.514	(0.4%)	831,229

Source: KAMCO Research

Market Return, Volatility & Trading Indicators

Market Return	Closing Value	DTD Chg	DTD % Chg	MTD % Chg	YTD-15 % Chg
MSM 30 Index	6,258.09	(42.88)	(0.3%)	(4.6%)	(1.3%)
Market Cap (OMR Mn)	7,659.97	(42.00)	(0.5%)	(4.2%)	(1.0%)

Benchmark Volatility**	Volatility Since:				
	Jan-2014	Jan-2013	Jan-2012	Jan-2011	Jan-2010
MSM 30 Index	15.3%	12.7%	11.4%	11.5%	11.1%

** Annualized Standard Deviation of Daily Returns

Trading Indicators	Today's Value	DTD Chg	DTD % Chg	Average Daily YTD-15	YTD-14
--------------------	------------------	------------	--------------	-------------------------	--------

Volume ('000 Shares)	33,767	16,481	95.3%	20,555	31,782
Value Traded (OMR '000)	7,521	2,722	56.9%	6,357	10,522
No. of Trades	823	(247)	(23.1%)	1,247	1,624

YTD-2015 Top Movers and Most Active Stocks

YTD-15 Best Return Performers	Price (OMR)	YTD-Value (OMR 000's)	YTD Vol. (Shares 000's)	YTD-15 Return
Gulf International Chemicals	0.252	6,819	29,509	65.8%
United Power	2.000	101	52	50.9%
ONIC. Holding	0.400	4,813	12,404	26.6%
Al Anwar Holding	0.240	69,125	272,425	25.7%
Al Sharqia Inv. Holding	0.157	5,472	31,823	20.8%

YTD-15 Worst Return Performers	Price (OMR)	YTD-Value (OMR 000's)	YTD Volume (Shares 000's)	YTD-15 Return
National Gas Co.	0.440	1,516	2,940	(20.0%)
Ahli Bank	0.200	2,132	9,403	(18.4%)
Global Financial Investment Co.	0.100	2,983	26,308	(18.0%)
Renaissance Services	0.392	6,633	13,923	(17.3%)
Port Services Corporation	0.297	209	627	(16.1%)

YTD-15 Most Active Stocks by Volume	Price (OMR)	YTD-Value (OMR 000's)	YTD Volume (Shares 000's)	YTD-15 Return
Al Anwar Holding	0.240	69,125	272,425	25.7%
Gulf Investment Services	0.145	22,618	132,510	2.1%
Bank Muscat	0.546	41,895	71,097	(6.2%)
Oman & Emirates Investment	0.123	9,569	68,343	0.0%
United Finance	0.146	9,888	66,741	7.4%

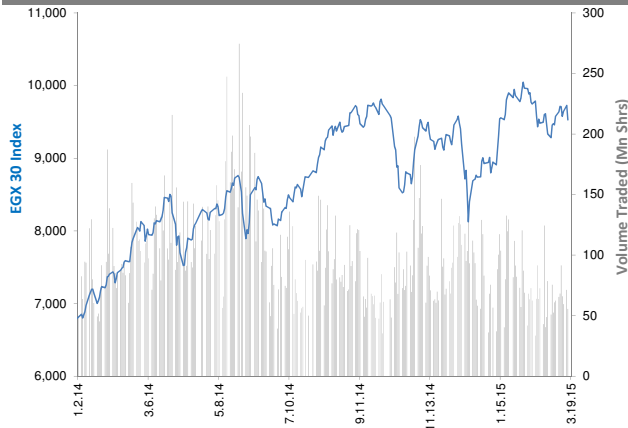
YTD-15 Return: Is a total return which accounts in addition to the change in price the cash & share dividends announced during the year.

The Egyptian Exchange Daily Report

(The bulletin covers the top 60 companies by Mkt. Cap out of 336 listed companies)

March 17, 2015

Index Performance relative to Volume



Top 10 Stocks by Market Capitalization

	Market Cap. (EGP Mn)	P/E (X)	ROE* (%)
1-Orascom Construction Industries (OCI)	57,667	NM	NM
2-Commercial Int'l Bank (Egypt)	51,766	17.2	25.1%
3-T M G Holding	22,699	38.8	2.3%
4-Global Telecom Hldg.	19,304	NM	NM
5-Telecom Egypt	18,880	6.4	10.5%
6-MobiNil	13,400	NM	NM
7-ABU Qir Fertilizers & Chemical ind. Co.	13,045	9.3	43.3%
8-EASTERN CO	11,450	15.2	16.9%
9-Elsweddy Cables	10,545	NM	2.0%
10-Egyptian Financial Group-Hermes Co.	9,835	NM	NM
Subtotal	170,924	34.65	5.0%

*: ROE is based on Net Profit for the Period FY-13 & Shareholders' Equity as of 31-December-13

Today's Top Movers and Most Active Stocks

Best Return Performers	Last Price (EGP)	Daily Return
Qatar National Bank AlAhli	34.00	3.0%
Credit Agricole Egypt	21.60	1.6%
Misr Cement Co.	81.01	0.4%
Misr Beni Suef Cement	43.07	0.2%
Faisal Islamic Bank of Egypt	42.03	0.1%

Worst Return Performers	Last Price (EGP)	Daily Return
Egyptian Resorts Co.	1.17	(4.9%)
Egyptian Co. for Mobile Services (MobiNil)	134.00	(3.6%)
Global Telecom Hldg. (Orascom Telecom)	3.68	(3.4%)
El Ahli Investment and Development	9.53	(3.2%)
National Bank of Kuwait - Egypt - NBK	22.50	(3.2%)

Most Active Stocks By Volume	Last Price (EGP)	Volume ('000 Shrs)
Amer Group Holding	1.11	13,449
Global Telecom Hldg. (Orascom Telecom)	3.68	7,951
Egyptian Resorts Co.	1.17	6,915
Palm Hills Developments	4.14	6,168
Citadel Capital	2.81	5,507

Source: KAMCO Research

Sectors' Return & Valuation Multiples

	Market Cap. (EGP Mn)	MTD % Chg	P/E (X)	P/BV (X)	Yield (%)
The Egyptian Exchange	386,024	(0.2%)	23.6	1.7	3.5%
Banking & Finance	78,737	1.5%	12.2	2.6	2.3%
Basic Resources	20,956	0.3%	NM	1.8	3.8%
Chemical	21,539	(3.0%)	7.7	3.1	8.8%
Construction & Material	79,482	0.9%	12.4	0.8	5.3%
Financial Services	25,878	3.2%	NM	1.2	0.7%
Food & Beverage	8,852	(5.5%)	17.0	2.5	3.2%
Healthcare & Pharma.	6,743	5.6%	21.6	3.6	3.5%
Ind. Goods,Services, Auto.	16,527	(1.4%)	61.5	2.2	1.8%
Media	673	2.0%	21.5	0.3	0.0%
Oil & Gas	4,770	(1.1%)	5.8	1.7	16.2%
Personal & Household	18,640	(0.2%)	18.0	1.7	2.8%
Real Estate	46,631	4.1%	54.0	1.4	0.2%
Telecommunication	51,584	(6.3%)	NM	1.8	6.9%
Travel & Leisure	5,012	(3.4%)	NM	1.4	0.0%

Sectors' MTD Return is based on the Change in market cap. and it might not conform with the benchmark return for each sector

Market Return, Volatility & Trading Indicators

Market Return	Closing Value	DTD Chg	DTD % Chg	MTD % Chg	YTD-15 % Chg
EGX 30 Index	9,529.01	(197.02)	(2.0%)	2.1%	6.7%
Market Cap (EGP Mn)	386,024	(4,744)	(1.4%)	(0.2%)	1.9%

Benchmark Volatility**	Since Jan-14	Since Jan-13	Since Jan-12	Since Jan-11	Since Jan-10
EGX 30 Index	21%	21%	24%	25%	26%

**: Annualized Standard Deviation of Daily Returns

Trading Indicators	Today's Value	DTD Chg	DTD % Chg	Average Daily YTD-15	YTD-14
Volume (Mn Shares)	56	(15.62)	(21.9%)	74	147
Value Traded (EGP Mn)	347	(34.4)	(9.0%)	437	538
No. of Trades	10,885	257	2.4%	13,172	17,255

Market Breadth	▲	5	▼	48	=	7
----------------	---	---	---	----	---	---

YTD-2015 Top Movers and Most Active Stocks

YTD-15 Best Return Performers	Last Price (EGP)	Volume ('000 Shrs)	YTD-15 Return
Heliopolis Housing	66.90	13,165	17.0%
Commercial Int'l Bank (Egypt)	57.00	76,951	16.1%
El Ezz Steel Rebars	16.18	38,125	15.9%
Medinet Nasr Housing	34.52	18,474	15.3%
Suez Cement Co.	41.20	1,346	15.2%

YTD-15 Worst Return Performers	Last Price (EGP)	Volume ('000 Shrs)	YTD-15 Return
Orascom Hotels & Development	12.70	10,374.4	(34.6%)
Asec Company for Mining - Ascom	8.94	1,956.3	(24.2%)
Egyptian Co. for Mobile Services (MobiNil)	134.00	284.2	(21.9%)
National CementCo. - Egypt	10.78	114.7	(20.4%)
Al Ezz Dekheila Steel Co. Alexandria	482.00	31.8	(17.1%)

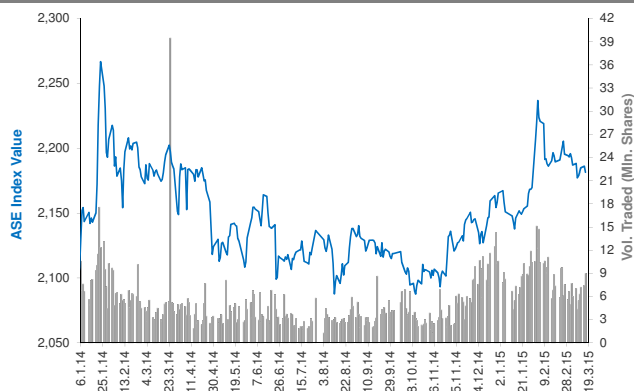
YTD-15 Most Active Stocks by Volume	Last Price (EGP)	Volume ('000 Shrs)	YTD-15 Return
Amer Group Holding	1.11	1,029,026	(13.28%)
Citadel Capital	2.81	465,436	(2.09%)
Egyptian Resorts Co.	1.17	385,230	(4.10%)
Global Telecom Hldg. (Orascom Telecom)	3.68	347,828	(7.30%)
Palm Hills Developments	4.14	267,142	0.73%

YTD-15 Return: Is a total return which accounts in addition to the change in price the cash & share dividends announced during the year.

Amman Stock Exchange Daily Report (1st Market)

March 17, 2015

Index Performance relative to Volume



Sectors' Return & Valuation Multiples

	Market Cap. (JD Mn)	MTD % Chg	P/E (X)	P/BV (X)	Yield (%)
Amman Stock Exchange	13,792	(0.2%)	14.8	0.9	3.8%
Banks	9,619	0.0%	10.7	0.8	3.5%
Insurance	95	(0.8%)	NM	0.9	3.2%
Diversified Financial Services	195	(2.9%)	NM	0.5	0.8%
Real Estate	316	(1.0%)	NM	0.8	0.4%
Educational Services	336	(0.3%)	12.7	2.2	4.1%
Hotels and Tourism	149	(2.1%)	25.5	0.7	3.8%
Transportation	106	(5.6%)	32.9	0.9	2.4%
Technology & Commun.	824	(3.2%)	16.5	2.2	10.0%
Media	19	(3.6%)	NM	0.4	0.0%
Utilities & Energy	673	0.5%	32.0	2.9	2.7%
Pharmaceutical & Medical Ind.	101	0.2%	55.0	1.1	0.0%
Tobacco & Cigarettes	304	(7.7%)	9.7	2.8	7.6%
Mining & Extraction Industries	641	(1.1%)	NM	0.7	3.3%
Engineering & Construction	109	1.3%	38.3	1.6	1.2%
Textiles, Leather & Cloth.	81	3.5%	17.0	0.9	5.0%

Sectors' MTD Return is based on the Change in market cap. and it might not conform with the benchmark return for each sector

Top 10 Stocks by Market Capitalization

	Market Cap. (JD Mn)	P/E (X)	ROE* (%)
1-ARAB BANK	3,868	7.8	6.5%
2-HOUSING BK TRD FIN	2,419	24.2	10.3%
3-JORDAN TELECOM	810	15.7	14.1%
4-JOR ISLAMIC BANK	531	11.8	17.7%
5-JOR PHOSPHATE MN	486	NM	0.2%
6-BANK OF JORDAN	439	10.8	12.9%
7-CAIRO AMMAN BANK	396	9.7	15.4%
8-JOR KUWAIT BANK	395	8.3	11.7%
9-JOR PETROL M REF	377	13.4	22.6%
10-ARAB JOR/INV/BANK	308	20.3	10.9%

Subtotal	10,029	11.56	7.7%
-----------------	---------------	--------------	-------------

* ROE is based on FY-2013 Net Profit & Shareholders' Equity as of 31-December-13

Today's Top Movers and Most Active Stocks

Best Return Performers	Price (JD)	Daily Return
MIDDLE EAST SPECIALIZED CABLES CO.	0.21	5.0%
ARAB UNION INTERNATIONAL INSURANCE	1.02	4.1%
IRBID DISTRICT ELECTRICITY	10.40	4.0%
JORDAN DAIRY	3.27	3.8%
RUM ALADDIN INDUSTRIES	0.28	3.7%

Worst Return Performers	Price (JD)	Daily Return
JORDAN CERAMIC INDUSTRIES	1.31	(4.4%)
INT'L BROKERAGE & FINANCIAL MARKETS	0.25	(3.8%)
JORDAN PRESS FOUNDATION/AL-RA'I	1.72	(3.4%)
JORDAN LOAN GUARANTEE CORP.	0.59	(3.3%)
TRANSPORT& INVESTMENT BARTER CO.	0.72	(2.7%)

Most Active Stocks By Volume	Price (JD)	Volume ('000 Shrs)
AD-DULAYL INDUSTRIAL PARK & REAL ESTATE CO.	1.41	2,683
TRANSPORT& INVESTMENT BARTER CO.	0.72	1,384
JORDAN INDUSTRIAL RESOURCES	0.50	907
READY MIX CONCRETE & CONSTRUCTION SUPPLIES	2.92	813
EL-ZAY READY WEAR MANUFACTURING	0.33	778

Source: KAMCO Research

Market Return, Volatility & Trading Indicators

Market Return	Closing Value	DTD Chg	DTD % Chg	MTD % Chg	YTD-15 % Chg
ASE Index	2,181.48	(4.71)	(0.2%)	(0.6%)	0.7%
Market Cap (JD Mn)	13,792.24	(13.37)	(0.1%)	(0.2%)	(0.8%)

Benchmark Volatility**	Since Jan-2014	Since Jan-2013	Since Jan-2012
ASE Index	7.5%	8.0%	7.6%

** Annualized Standard Deviation of Daily Returns

Trading Indicators	Today's Value	DTD Chg	DTD % Chg	Average Daily YTD-15	YTD-14
Volume ('000 Shares)	8,970	1,546	20.8%	8,487	6,677
Value Traded (JD '000)	11,279	1,640	17.0%	8,245	8,446
No. of Trades	2,611	104	4.1%	2,883	3,125

Market Breadth	▲ 21	▼ 30	= 68
-----------------------	-------------	-------------	-------------

YTD-2015 Top Movers and Most Active Stocks

YTD-15 Best Return Performers	Price (JD)	Volume ('000 Shrs)	YTD-15 Return
AD-DULAYL INDUSTRIAL PARK & REAL ESTATE CO.	1.41	101,025.9	72.0%
JORDAN DAIRY	3.27	11.0	61.9%
SPECIALIZED INVESTMENT COMPOUNDS	0.84	23,257.1	44.8%
REAL ESTATE DEVELOPMENT	0.26	31,043.1	44.4%
CENTURY INVESTMENT GROUP	2.28	11,994.8	44.3%

YTD-15 Worst Return Performers	Price (JD)	Volume ('000 Shrs)	YTD-15 Return
M. E PHARMA. & CHMICAL IND. & MEDICAL APPLIANCE	1.01	2.3	(49.0%)
COMPREHENSIVE MULTIPLE PROJECT CO.	0.79	4.5	(36.3%)
AKARY FOR INDUSTRIES & REAL ESTATE INV.	1.89	212.8	(24.7%)
NUTRIDAR	0.54	0.7	(22.9%)
JORDAN DUBAI PROPERTIES	0.53	2,507.9	(19.7%)

YTD-15 Most Active Stocks by Volume	Price (JD)	Volume ('000 Shrs)	YTD-15 Return
AD-DULAYL INDUSTRIAL PARK & REAL ESTATE CO.	1.41	101,026	72.0%
TRANSPORT& INVESTMENT BARTER CO.	0.72	59,163	(1.4%)
JORDAN INDUSTRIAL RESOURCES	0.50	41,986	2.0%
REAL ESTATE DEVELOPMENT	0.26	31,043	44.4%
SPECIALIZED INVESTMENT COMPOUNDS	0.84	23,257	44.8%

YTD-15 Return: Is a total return which accounts in addition to the change in price the cash & share dividends announced during the year.

Tunisia Stock Exchange Daily Report

March 17, 2015

Index Performance relative to Volume



Sectors' Return & Valuation Multiples

	Market Cap. (DT Mn)	MTD % Chg	P/E (X)	P/B (X)	Yield (%)
Tunis Stock Exchange	17,119	(1.2%)	20.87	1.95	2.2%
Banking	6,660	(0.2%)	14.60	1.46	2.2%
Insurance	757	0.2%	18.52	1.50	0.8%
Leasing	520	2.4%	12.13	1.22	3.5%
Financial Services	1,384	4.3%	16.82	2.19	2.4%
Industrial	1,271	3.3%	14.52	2.61	2.6%
Chemical Industry	718	(1.3%)	43.08	2.17	4.2%
Food & Beverage	3,470	(7.9%)	25.34	5.30	1.4%
Retailing	1,457	0.6%	NM	4.20	3.0%
Others	880	(0.0%)	NM	1.09	1.2%

Sectors' MTD Return is based on the Change in market cap. and it might not conform with the benchmark return for each sector

Top 10 Stocks by Market Capitalization

	Market Cap. (DT Mn)	P/E (X)	ROE* (%)
1-Société Frigorifique et Brasserie de Tunis	2,429	21.66	22.0%
2-Banque de Tunisie	1,647	21.99	12.3%
3-Banque Internationale Arabe de Tunisie	1,411	17.68	13.1%
4-Banque Attijari De Tunisie	1,105	13.37	21.3%
5-Poulina Group Holding	990	14.72	12.1%
6-Delice Holding	960	38.41	24.5%
7-Amen Bank	577	5.43	17.3%
8-Union Bancaire pour le Commerce et	505	61.74	3.1%
9-Arab Tunisian Bank	480	10.00	9.8%
10-Société d'Articles Hygiéniques	441	30.82	13.4%
Subtotal	10,545	17.05	14.6%

*: ROE is based on Net Profit for the Period FY-13 & Shareholders' Equity as of 31-December-13

Today's Top Movers and Most Active Stocks

Best Return Performers	Price (DT)	Daily Return
Assurances Salim	19.98	4.50%
Ciments De Bizerte	5.99	2.74%
Tunisie Leasing	22.59	2.68%
SOTIPAPIER	4.98	2.68%
Société El Wifack Leasing	18.47	2.67%

Worst Return Performers	Price (DT)	Daily Return
CELLCOM	7.80	(2.3%)
Société Tunisienne des Marchés de Gros	1.75	(2.2%)
Société des Industries Pharm. de Tunisie	7.85	(1.9%)
Société Générale Industrielle de Filtration	3.13	(1.6%)
Banque de Tunisie et des Emirats	22.35	(1.5%)

Most Active Stocks By Volume	Price (DT)	Volume (Shares)
Société Moderne de Céramique	2.90	225,579
TUNISAIR	0.99	87,069
Société d'Articles Hygiéniques	12.65	57,924
Société Immobilière Tuniso-Séoudienne	1.78	35,133
SOPAT	3.30	25,487

Source: KAMCO Research

Market Return, Volatility & Trading Indicators

Market Return	Closing Value	DTD Chg	DTD % Chg	MTD % Chg	YTD-15 % Chg
Tunisia Index	5,363.36	(6.55)	(0.1%)	(1.4%)	5.4%
Market Cap (DT Mln)	17,119	5.40	0.0%	(1.2%)	5.7%

Benchmark Volatility	Since Jan-14	Since Jan-13	Since Jan-12
Tunisia Index	6.6%	6.9%	6.9%

Trading Indicators	Today's Value	DTD Chg	DTD % Chg	Average Daily YTD-15	YTD-14
Volume ('000 Shares)	609	234.4	62.6%	724	1,337
Value Traded ('000 DT)	3,326	489	17.2%	6,594	8,199
No. of Trades	1,463	143	10.8%	1,603	2,383

Market Breadth	▲ 16	▼ 23	= 25
----------------	------	------	------

YTD-2015 Top Movers and Most Active Stocks

YTD-15 Best Return Performers	Price (DT)	Volume ('000 Shrs)	YTD-15 Return
Société de Placement et de Dévelop. Ind. et Touristique	11.88	117.2	29.3%
Banque de l'Habitat	12.71	1,805.0	24.0%
Banque Nationale Agricole	9.24	553.6	21.6%
Société d'Articles Hygiéniques	12.65	2,920.7	20.8%
Société Frigorifique et Brasserie de Tunis	26.99	4,069.7	20.0%

YTD-15 Worst Return Performers	Price (DT)	Volume ('000 Shrs)	YTD-15 Return
Assurances Salim	19.98	39.184	(24.0%)
Société Tunis. d'Entreprises de Télécom.	2.70	271.3	(21.7%)
Société Tunisienne de Réassurance	8.20	607.1	(17.6%)
Société Tunisienne d'Equiptement	8.69	-	(16.5%)
Société Essoukna	5.26	86.9	(16.4%)

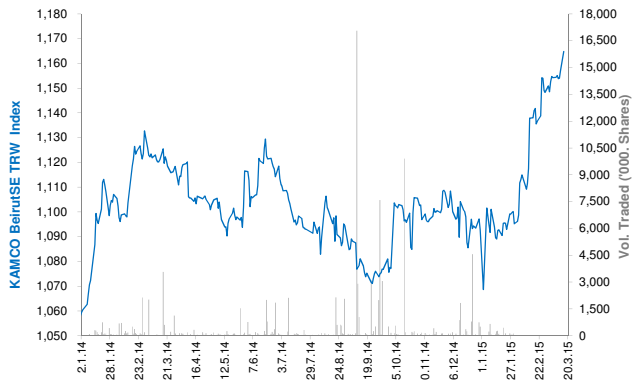
YTD-15 Most Active Stocks by Volume	Price (DT)	Volume ('000 Shrs)	YTD-15 Return
Société Moderne de Céramique	2.90	6,436.7	15.5%
Société Frigorifique et Brasserie de Tunis	26.99	4,069.7	20.0%
Société d'Articles Hygiéniques	12.65	2,920.7	20.8%
TUNISAIR	0.99	1,919.1	-12.4%
Banque de l'Habitat	12.71	1,805.0	24.0%

YTD-15 Return: Is a total return which accounts in addition to the change in price the cash & share dividends announced during the year.

Beirut Stock Exchange Daily Report

March 17, 2015

Index Performance relative to Volume



Sectors' Return & Valuation Multiples

	Market Cap. (USD Mn)	MTD % Chg	P/E (X)	P/B (X)	Yield (%)
Beirut Stock Exchange	11,944	1.4%	8.97	1.02	3.8%
Banking	9,662	0.8%	8.55	1.00	4.5%
Industrial	323	0.5%	12.83	1.41	5.0%
Trading	35	0.0%	11.56	0.69	8.5%
Real Estate & Construction	1,944	5.0%	10.64	1.05	0.0%

Sectors' MTD Return is based on the Change in market cap. and it might not conform with the benchmark return for each sector

Market Breadth

▲	3	▼	0	=	27
---	---	---	---	---	----

Top 10 Stocks by Market Capitalization

	Market Cap. (USD Mn)	P/E (X)	ROE* (%)
1- Bank Audi	2,698	11.66	11.3%
2- BLOM Bank	2,043	8.63	15.0%
3- Solidere A	1,185	6.49	9.8%
4- Byblos Bank	950	6.38	9.3%
5- Bank Audi GDR	814	-	-
6- Solidere B	759	4.15	9.8%
7- BLOM Bank GDR	739	-	-
8- Bank Of Beirut	310	5.15	11.0%
9- Holcim Liban	293	13.42	10.2%
10- Byblos Bank Preferred 2009	205	-	-
Subtotal	9,994	7.64	11.2%

*: ROE is based on Net Profit for the period ended December-13 and Shareholders' equity as of 31-December-13

Today's Top Movers and Most Active Stocks

Best Return Performers	Price (USD)	Daily Return
BLOM Bank	9.50	3.7%
Solidere A	11.85	0.4%
Solidere B	11.67	0.1%

Worst Return Performers	Price (USD)	Daily Return
No Losers		

Most Active Stocks by Volume	Price (USD)	Volume (Shares)
Solidere A	11.85	35,761
Solidere B	11.67	23,506
Bank Audi	6.75	3,755
BLOM Bank	9.50	454
Byblos Bank Preferred 2008	102.20	80

Source: KAMCO Research

Market Return, Volatility & Trading Indicators

Market Return	Closing Value	DTD Chg	DTD % Chg	MTD % Chg	YTD-15 % Chg
KAMCO BeirutSE TRW Index	1,164.80	7.67	0.7%	1.4%	6.6%
Market Cap (USD Mn)	11,944.063	78.75	0.7%	1.4%	6.4%

Benchmark Volatility	Since Jan-14	Since Jan-13	Since Jan-12
KAMCO BeirutSE TRW Index	7.9%	7.4%	7.1%

Trading Indicators	Today's Value	DTD Chg	DTD % Chg	Average Daily YTD-15	YTD-14
Volume ('000s shares)	127.11	30	31.2%	541	662
Value Traded ('000s USD)	733.29	(133)	(15.4%)	3,898	2,878

YTD-2015 Top Movers and Most Active Stocks

YTD Best Return Performers	Price (USD)	YTD Volume (Shares)	YTD-15 Return
Bank Audi	6.75	19,194,014	12.5%
BEMO Bank	1.90	124,374	8.6%
BLOM Bank	9.50	2,055,211	8.0%
Bank Audi GDR	7.00	410,865	6.9%
Byblos Bank	1.68	2,594,862	5.0%

YTD Worst Return Performers	Price (USD)	YTD Volume (Shares)	YTD-15 Return
BLC Bank Preferred A	100.000	10,000	(2.9%)
Holcim Liban	15.000	7,968	(1.6%)

YTD Most Active Stocks by Volume	Price (USD)	YTD Volume (Shares)	YTD-15 Return
Bank Audi	6.75	19,194,014	12.5%
Byblos Bank	1.68	2,594,862	5.0%
BLOM Bank	9.50	2,055,211	8.0%
Solidere A	11.85	873,157	4.7%
Solidere B	11.67	469,981	2.9%

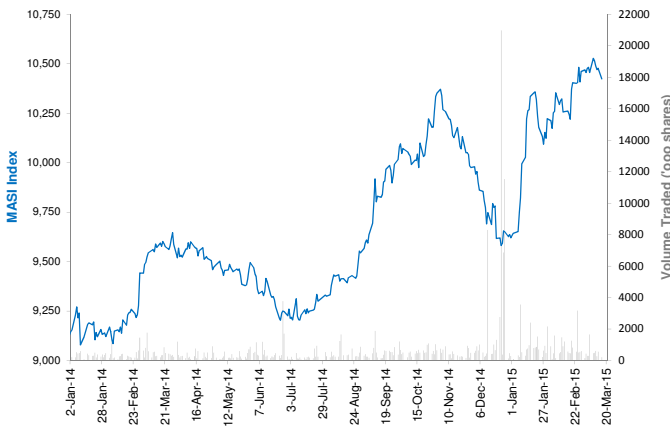
YTD-15 Return: Is a total return which accounts in addition to the change in price the cash & share dividends announced during the year.

Casablanca Stock Exchange Daily Report

(The Bulletin covers the 41 Stocks listed on the Main Market)

March 17, 2015

Index Performance relative to Volume



Market Breadth

▲ 11 ▼ 15 = 15

Top 10 Stocks by Market Capitalization

	Market Cap. (MAD Mn)	P/E (X)	ROE* (%)
1-Itissalat Al-Maghrib	116,524	21.0	36.1%
2-Attijariwafa Bank	75,597	18.3	12.5%
3-Banque Marocaine Du Commerce Exterieur	41,994	34.1	8.3%
4-Banque Centrale Populaire	40,957	21.8	6.7%
5-Ciments Du Maroc	17,107	21.1	13.1%
6-Wafa Assurances	14,700	18.9	19.9%
7-CIE Generale Immobiliere	13,346	36.4	8.2%
8-Douja Prom Addoha	10,647	6.3	15.5%
9-Holcim Maroc	9,683	25.7	11.4%
10-Managem	9,296	23.0	11.6%
Subtotal	349,851	20.33	13.9%

*: ROE is based on Net Profit for the period FY-13 and Shareholders' equity as of 31-December-13

Today's Top Movers and Most Active Stocks

Best Return Performers	Price (MAD)	Daily Return
Label Vie	1,166.00	6.0%
Auto Hall	93.92	2.5%
Managem	1,015.00	2.5%
ENNAKL Automobiles	42.90	1.7%
Credit Immobilier Et Hotelier	346.00	1.2%

Worst Return Performers	Price (MAD)	Daily Return
Med Paper	16.74	(6.0%)
Alliances Developpement Immobilier	125.00	(3.8%)
Fenie Brossette	181.00	(3.7%)
Lafarge Ciments	1,870.00	(2.6%)
Holcim Maroc	2,300.00	(1.9%)

Most Active Stocks By Volume	Price (MAD)	Volume (Shrs)
Itissalat Al-Maghrib	132.55	86,262
Douja Prom Addoha	33.80	26,626
Med Paper	16.74	26,500
Attijariwafa Bank	375.65	21,096
Banque Centrale Populaire	236.55	17,012

Source: KAMCO Research

Sectors' Return & Valuation Multiples

	Market Cap. (MAD Mn)	MTD % Chg	P/E (X)	P/B (X)	Yield (%)
Casablanca Stock Exchange	466,736	(0.2%)	19.2	2.4	3.6%
Banking	181,964	0.2%	21.0	2.0	2.4%
Beverages	1,881	0.0%	23.7	3.6	2.6%
Chemicals	365	(28.7%)	NM	0.7	0.0%
Construction & Bldg. Material	63,322	(2.4%)	23.7	3.8	3.4%
Distributors	9,035	2.7%	28.9	2.4	2.4%
Electrical & Electronic Equipment	453	6.9%	45.5	0.7	5.9%
Electricity	1,117	0.0%	2.8	0.2	0.0%
Food Producers & Processors	3,685	(0.3%)	4.9	0.7	14.5%
Holding Companies	2,716	(1.5%)	23.2	2.0	4.0%
Insurance	23,970	(0.2%)	21.1	3.4	1.8%
Investment & other Finance	3,911	0.1%	14.3	1.8	7.1%
Leisures & Hotel	1,876	9.7%	NM	2.0	0.0%
Materials, Software & Computer	775	1.8%	13.9	1.1	5.0%
Mining	15,775	2.3%	12.4	2.7	7.2%
Oil & Gas	10,081	(7.1%)	NM	1.2	0.0%
Real Estate	25,552	2.0%	9.7	1.2	4.5%
Telecommunications	116,524	(0.1%)	21.0	7.6	5.6%
Transport	435	3.2%	12.4	1.6	7.0%
Utilities	3,256	(2.6%)	11.0	1.9	5.5%
Forestry & Paper	43	(30.0%)	NM	0.7	0.0%

Sectors' MTD Return is based on the Change in market cap. and it might not conform with the benchmark return for each sector

Market Return, Volatility & Trading Indicators

Market Return	Closing Value	DTD Chg	DTD % Chg	MTD % Chg	YTD-15 % Chg
MASI Index	10,424.09	(52.8)	(0.5%)	(0.3%)	8.4%
MADEX Index	8,561.73	(46.6)	(0.5%)	(0.2%)	9.2%
Market Cap (MAD Mn)	466,736	(2.0)	(0.4%)	(0.2%)	8.1%

Benchmark Volatility**	YTD-14	Since Jan-13	Since Jan-12	Since Jan-11	Since Jan-10
MASI Index	7.6%	8.2%	8.8%	9.9%	9.9%
MADEX Index	9.6%	8.0%	8.6%	9.1%	10.2%

**: Annualized Standard Deviation of Daily Returns

Trading Indicators	Today's Value	DTD Chg	DTD % Chg	Average Daily YTD-15	YTD-14
Volume ('000 Shares)	211.47	(350.79)	(62.4%)	811	516
Value Traded (MAD Mn)	20.01	(55.46)	(73.5%)	60	70

YTD-2015 Top Movers and Most Active Stocks

YTD Best Return Performers	Price (MAD)	Volume (Shrs)	YTD-15 Return
Hightech Payment Systems SA	483.00	16,487	29.8%
Ciments Du Maroc	1,185.00	139,960	26.1%
Holcim Maroc	2,300.00	103,692	20.8%
SAHAM ASSURANCE	1,199.00	39,343	19.8%
TAQA MOROCCO	500.00	315,927	17.6%

YTD Worst Return Performers	Price (MAD)	Volume (Shrs)	YTD-15 Return
Alliances Developpement Immobilier	125.00	519,396	(55.0%)
Med Paper	16.74	252,195	(39.8%)
Societe Nationale d'Electrolyse et de Petrochimie	152.00	35,134	(26.5%)
Label Vie	1,166.00	97,744	(12.6%)
Risma	238.00	16,449	(11.5%)

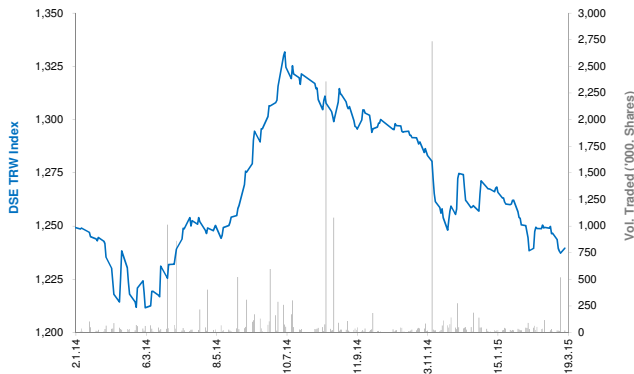
YTD Most Active Stocks by Volume	Price (MAD)	Volume ('000 Shrs)	YTD-15 Return
Douja Prom Addoha	33.80	15,830	(10.1%)
Itissalat Al-Maghrib	132.55	8,339	16.5%
Comp Suc Maroc Et De Raff	186.95	4,274	12.0%
Compagnie d'Assurances et de Reassurances ATLANTA	72.00	3,233	10.3%
Attijariwafa Bank	375.65	2,188	9.2%

YTD-15 Return: accounts in addition to the chg in price the cash & share dividends announced during the year.

Damascus Securities Exchange Daily Report

March 17, 2015

Index Performance relative to Volume



Sectors' Return & Valuation Multiples

	Market Cap. (SRY Mn)	MTD % Chg	P/E (X)	P/B (X)	Yield (%)
Damascus SE	129,118	(0.8%)	6.6	1.1	1.0%
Banking	115,330	(0.9%)	6.39	1.06	0.0%
Services	1,500	0.0%	NM	2.91	0.0%
Industrial	3,555	0.0%	6.69	1.55	0.0%
Insurance	8,194	0.0%	8.75	1.00	16.5%
Agricultural	539	0.0%	NM	3.81	0.0%

Sectors' MTD Return is based on the Change in market cap. and it might not conform with the benchmark return for each sector

Market Breadth

▲ 1 ▼ 1 = 22

Top 10 Stocks by Market Capitalization

	Market Cap. (SRY Mn)	Trailing P/E (X)	ROE* (%)
1- Banque Bemo Saudi Fransi	17,638	8.9	22.0%
2- Qatar National Bank - Syria	15,836	1.8	31.9%
3- Bank Audi Syria	13,238	41.8	4.3%
4- Arab Bank- Syria	9,301	8.3	15.9%
5- Bank Of Syria And Overseas	9,160	54.3	2.9%
6- The Int'l Bank For Trade & Finance	8,715	NM	0.0%
7- Syria International Islamic Bank	8,550	44.1	2.0%
8- Byblos Bank Syria	7,650	16.9	6.5%
9- Al Baraka Bank - Syria	6,262	2.4	34.2%
10- Cham Bank	4,703	2.0	31.2%

Subtotal 96,349 6.21 17.5%

* ROE is based on FY-2013 Net Profit & Shareholders' Equity as of 31-December-13

Today's Top Movers & Most Active Stocks

Best Return Performers	Price (SRY)	Daily Return
Qatar National Bank Syria	105.57	1.6%

Worst Return Performers	Price (SRY)	Daily Return
Syria International Islamic Bank	100.60	(0.1%)

Most Active Stocks by Volume	Price (SRY)	Volume (Shrs)
Syria International Islamic Bank	100.60	12,823
Qatar National Bank Syria	105.57	5,172
Alahliyah Vegetable Oil Company E.S.A	237.00	1,446
Banque Bemo Saudi Fransi	352.75	53
Bank of Jordan Syria	87.50	5

Source: KAMCO Research

Market Return, Volatility & Trading Indicators

Market Return	Closing Value	DTD Chg.	DTD % Chg.	MTD % Chg.	YTD-15 % Chg.
DSE Weighted Index	1,239.62	2.32	0.2%	(0.8%)	(2.5%)
Market Cap (SRY Mn)	129,118	242	0.2%	(0.8%)	(2.4%)

Benchmark Volatility	Since Jan-14	Since Jan-13	Since Jan-12
DSE Weighted Index	5.3%	10.8%	9.6%

** Annualized Standard Deviation of Daily Returns

Trading Indicators	Today's Value	DTD Chg.	DTD % Chg.	Average Daily YTD-15	YTD-14
Volume (Shrs)	19,499	(499,545)	(96.2%)	43,499	1,524
Value Traded ('000 SRY)	2,215	(63,874)	(96.6%)	6,144	4,968
No. of Trades	23	7.0	43.8%	28	40

YTD-2015 Top Movers & Most Active Stocks

YTD Best Return Performers	Price (SRY)	YTD Vol. (Shrs)	YTD-15 Return
Alahliyah Vegetable Oil Company E.S.A	237.00	26,880	7.7%
National Insurance Company	150.25	750	4.9%
Arab Bank- Syria	184.18	106,417	1.2%
Byblos Bank Syria	125.00	2,213	0.4%

YTD Worst Return Performers	Price (SRY)	YTD Vol. (Shrs)	YTD-15 Return
Qatar National Bank Syria	105.57	227,159	(11.8%)
Cham Bank	94.06	150,898	(9.8%)
Syria International Islamic Bank	100.60	251,726	(8.3%)
Fransabank Syria	93.00	12,147	(3.1%)
Bank of Jordan Syria	87.50	10,329	(2.5%)

YTD Most Active Stocks by Volume	Price (SRY)	YTD Vol. (Shrs)	YTD-15 Return
Al Baraka Bank - Syria	125.23	699,966	(0.5%)
Syria International Islamic Bank	100.60	251,726	(8.3%)
Qatar National Bank Syria	105.57	227,159	(11.8%)
Cham Bank	94.06	150,898	(9.8%)
Bank Of Syria And Overseas	229.00	112,472	0.0%

YTD-15 Return: Is a total return which accounts in addition to the change in price the cash & share dividends announced during the year.

Disclaimer & Important Disclosures

KAMCO is authorized and fully regulated by the Capital Markets Authority ("CMA") and partially regulated by the Central Bank of Kuwait ("CBK")

This document is provided for informational purposes only. Nothing contained in this document constitutes investment, an offer to invest, legal, tax or other advice or guidance and should be disregarded when considering or making investment decisions. In preparing this document, KAMCO did not take into account the investment objectives, financial situation and particular needs of any particular person. Accordingly, before acting on this document, investors should independently evaluate the investments and strategies referred to herein and make their own determination of whether it is appropriate in light of their own financial circumstances and objectives. The entire content of this document is subject to copyright with all rights reserved. This research and the information contained herein may not be reproduced, distributed or transmitted in Kuwait or in any other jurisdiction to any other person or incorporated in any way into another document or other material without our prior written consent.

Analyst Certification

Each of the analysts identified in this report certifies, with respect to the sector, companies or securities that the individual analyses, that (1) the views expressed in this report reflect his or her personal views about all of the subject companies and securities and (2) no part of his or her compensation was, is or will be directly or indirectly dependent on the specific recommendations or views expressed in this report.

KAMCO Ratings

KAMCO investment research is based on the analysis of regional and country economics, industries and company fundamentals. KAMCO company research reflects a long-term (12-month) target price for a company or stock. The ratings bands are:

- * **Outperform:** Target Price represents expected returns $\geq 10\%$ in the next 12 months
- * **Neutral:** Target Price represents expected returns between -10% and $+10\%$ in the next 12 months
- * **Underperform:** Target Price represents an expected return of $<-10\%$ in the next 12 months

In certain circumstances, ratings may differ from those implied by a fair value target using the criteria above. KAMCO policy is to maintain up-to-date fair value targets on the companies under its coverage, reflecting any material changes to the analyst's outlook on a company. Share price volatility may cause a stock to move outside the rating range implied by KAMCO's fair value target. Analysts may not necessarily change their ratings if this happens, but are expected to disclose the rationale behind their view to KAMCO clients.

Any terms and conditions proposed by you which are in addition to or which conflict with this Disclaimer are expressly rejected by KAMCO and shall be of no force or effect. The information contained in this document is based on current trade, statistical and other public information we consider reliable. We do not represent or warrant that such information is fair, accurate or complete and it should not be relied upon as such. KAMCO has no obligation to update, modify or amend this document or to otherwise notify a recipient thereof in the event that any opinion, forecast or estimate set forth herein, changes or subsequently becomes inaccurate. The publication is provided for informational uses only and is not intended for trading purposes. The information on publications does not give rise to any legally binding obligation and/or agreement, including without limitation any obligation to update such information. You shall be responsible for conducting your own investigation and analysis of the information contained or referred to in this document and of evaluating the merits and risks involved in the securities forming the subject matter of this or other such document. Moreover, the provision of certain data/information in the publication may be subject to the terms and conditions of other agreements to which KAMCO is a party.

Nothing in this document should be construed as a solicitation or offer, or recommendation, to acquire or dispose of any investment or to engage in any other transaction, or to provide any investment advice or service. This document is directed at Professional Clients and not Retail Clients within the meaning of CMA rules. Any other persons in receipt of this document must not rely upon or otherwise act upon it. Entities and individuals into whose possession this document comes are required to inform themselves about, and observe such restrictions and should not rely upon or otherwise act upon this document where it is unlawful to make to such person such an offer or invitation or recommendation without compliance with any authorization, registration or other legal requirements.

Risk Warnings

Any prices, valuations or forecasts are indicative and are not intended to predict actual results, which may differ substantially from those reflected. The value of an investment may go up as well as down. The value of and income from any investment may fluctuate from day to day as a result of changes in relevant economic markets (including, without limitation, foreseeable or unforeseeable changes in interest rates, foreign exchange rates, default rates, prepayment rates, political or financial conditions, etc.).

Past performance is not indicative of future results. Any opinions, estimates, valuations or projections (target prices and ratings in particular) are inherently imprecise and a matter of judgment. They are statements of opinion and not of fact, based on current expectations, estimates and projections, and rely on beliefs and assumptions. Actual outcomes and returns may differ materially from what is expressed or forecasted. There are no guarantees of future performance. Certain transactions, including those involving futures, options, and other derivatives, give rise to substantial risk and are not suitable for all investors. This document does not propose to identify or to suggest all of the risks (direct or indirect) which may be associated with the investments and strategies referred to herein.

Conflict of Interest

KAMCO and its affiliates provide full investment banking services, and they and their directors, officers and employees, may take positions which conflict with the views expressed in this document. Salespeople, traders, and other professionals of KAMCO may provide oral or written market commentary or trading strategies to our clients and our proprietary trading desks that reflect opinions that are contrary to the opinions expressed in this document. Our asset management area, our proprietary trading desks and investing businesses may make investment decisions that are inconsistent with the recommendations or views expressed in this document. KAMCO may have or seek investment banking or other business relationships for which it will receive compensation from the companies that are the subject of this document. Facts and views presented in this document have not been reviewed by, and may not reflect information known to, professionals in other KAMCO business areas, including investment banking personnel. United Gulf Bank, Bahrain owns majority of KAMCO's shareholding and this ownership may create, or may create the appearance of, conflicts of interest.

No Liability & Warranty

KAMCO makes neither implied nor expressed representations or warranties and, to the fullest extent permitted by applicable law, we hereby expressly disclaim any and all express, implied and statutory representations and warranties of any kind, including, without limitation, any warranty as to accuracy, timeliness, completeness, and fitness for a particular purpose and/or non-infringement. KAMCO will accept no liability in any event including (without limitation) your reliance on the information contained in this document, any negligence for any damages or loss of any kind, including (without limitation) direct, indirect, incidental, special or consequential damages, expenses or losses arising out of, or in connection with your use or inability to use this document, or in connection with any error, omission, defect, computer virus or system failure, or loss of any profit, goodwill or reputation, even if expressly advised of the possibility of such loss or damages, arising out of or in connection with your use of this document. We do not exclude our duties or liabilities under binding applicable law.



KAMCO Investment Company – K.S.C (Public)

Al-Shaheed Tower, Khalid Bin Al-Waleed Street- Sharq

P.O. BOX : 28873, Safat 13149, State of Kuwait

Tel: (+965) 1852626 Fax: (+965) 22492395

Email : Kamcoird@kamconline.com