

MENA Markets Daily Report

May 4, 2020

		Country	Benchmark		Index Value	DTD Change	YTD 2020	FY 2019
MENA Countries								
In this Report... Kuwait 2 Saudi Arabia 3 UAE - Dubai 4 UAE - Nasdaq Dubai 5 UAE - Abu Dhabi 6 Qatar 7 Bahrain 8 Oman 9 Egypt 10		Kuwait	Premier Market Index	▼	5,248.07	(2.0%)	(24.8%)	32.4%
		Kuwait	Main 50 Index	▼	4,101.66	(2.0%)	NA	NA
		Kuwait	Main Market Index	▼	4,173.04	(1.3%)	(15.0%)	3.6%
		Kuwait	All Share Index	▼	4,885.51	(1.8%)	(22.2%)	23.7%
		Saudi Arabia	TADAWUL All Share Index	▼	6,585.58	(7.4%)	(21.5%)	7.2%
		UAE - Dubai	DFM General Index	▼	1,946.34	(4.0%)	(29.6%)	9.3%
		UAE - Nasdaq Dubai	FTSE NASDAQ Dubai UAE 20 Index	▼	2,380.13	(3.4%)	(25.3%)	3.6%
		UAE - Abu Dhabi	ADX General Index	▼	4,105.68	(2.9%)	(19.1%)	3.3%
		Qatar	QE 20 Index	▼	8,687.59	(0.9%)	(16.7%)	1.2%
		Bahrain	Bahrain All Share	▲	1,310.73	0.2%	(18.6%)	20.4%
		Oman	MSM 30 Index	▼	3,538.15	(0.0%)	(11.1%)	(7.9%)
		Egypt	EGX 30	▼	10,199.85	(3.4%)	(26.9%)	7.1%
		Jordan	ASE Index	=	1,668.18	0.0%	(8.1%)	(4.9%)
		Lebanon	Blom Stock Index	=	629.46	0.0%	(19.9%)	(19.6%)
		Tunisia	Tunisia Index	=	6,213.89	0.0%	(12.8%)	(2.1%)
		Morocco	MASI	=	9,400.70	0.0%	(22.8%)	7.1%
		Syria	DSE Weighted Index	=	6,240.68	0.0%	6.9%	(5.7%)
		Emerging Markets						
		China	SSE Composite Index	▲	2,860.08	1.3%	(6.2%)	22.3%
		Russia	RUSSIAN RTS INDEX (\$)	▼	1,125.03	(1.7%)	(27.4%)	44.9%
		India	SENSEX	▲	33,717.62	3.1%	(18.3%)	14.4%
		Brazil	BOVESPA Stock Index	▼	80,505.90	(3.2%)	(30.4%)	31.6%
		Mexico	BOLSA Index	▼	36,470.11	(1.1%)	(16.2%)	4.6%
		Korea	KOSPI Index	▲	1,947.56	0.7%	(11.4%)	7.7%
		Taiwan	TAIEX Index	▲	10,992.14	2.0%	(8.4%)	23.3%
		Global Markets						
		World	MSCI World Index	▼	2,004.79	(2.3%)	(15.0%)	25.2%
		Asia	MSCI Asia Pacific	▼	145.30	(1.8%)	(14.9%)	16.3%
		Europe	DJ Stoxx 600	▼	337.39	(0.8%)	(18.9%)	23.2%
		Europe	FTSEurofirst 300	▼	1,318.07	(0.8%)	(18.8%)	22.0%
		Emerging Markets	MSCI EM Index	▼	916.77	(0.9%)	(17.8%)	15.4%
		U.S.A	S&P 500	▼	2,830.71	(2.8%)	(12.4%)	28.9%
		U.S.A	DJIA	▼	23,723.69	(2.6%)	(16.9%)	22.3%
		U.S.A	NASDAQ Composite	▼	8,604.95	(3.2%)	(4.1%)	35.2%
		UK	FTSE 100	▼	5,763.06	(2.3%)	(23.6%)	12.1%
		Germany	DAX	▼	10,861.64	(2.2%)	(18.0%)	25.5%
		Japan	NIKKEI 225	▼	19,619.35	(2.8%)	(17.1%)	18.2%
		Hong Kong	HANG SENG INDEX	▲	24,643.59	0.3%	(12.6%)	9.1%
		Commodities						
		Oil	OPEC Crude	▲	14.36	15.7%	(78.9%)	31.8%
		Oil	Brent	▲	26.44	4.6%	(59.9%)	22.7%
		Oil	Kuwait	▲	19.01	21.7%	(71.7%)	26.7%
		Natural Gas	NYMEX Natural Gas (USD/MMBtu)	▼	1.89	(3.0%)	(15.9%)	(28.5%)
		Gold	Gold Spot \$/Oz	▲	1,700.42	0.8%	12.1%	18.3%

Source: Bloomberg & Kamco Research. Note : Data as of last trading day.

Investment Strategy & Research
kamcoird@kamcoinvest.com

P.O.Box 28873, Safat 13149 Kuwait
Tel: (965) 2233 6600, Extn: 6982/6912
Fax: (965) 2249 2395

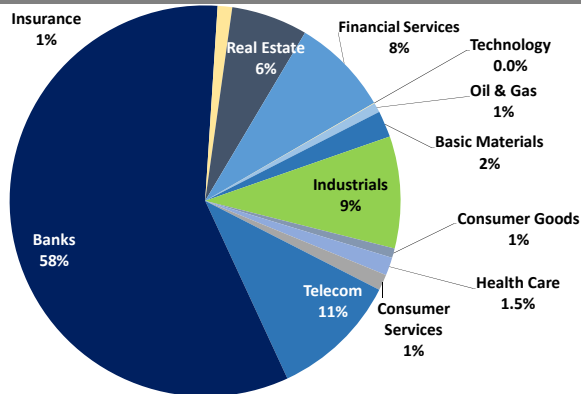
<http://www.kamcoinvest.com>

Kamco Investment Company - K.S.C
(Public)

Boursa Kuwait Daily Report

May 4, 2020

Sector Weight by Market Cap



Top 10 Companies by Market Capitalization

Company Name	Market Cap. (Mn KWD)	P/E (X)	ROE* (%)
1- National Bank of Kuwait	4,986.9	12.5	12.1%
2- Kuwait Finance House	4,489.4	18.0	12.5%
3- Zain	2,228.4	10.5	16.7%
4- Ahli United Bank - Bahrain	1,708.5	7.7	17.9%
5- Boubayan Bank	1,587.7	26.0	10.8%
6- Agility (PWC Logistics)	1,115.9	13.0	8.2%
7- Commercial Bank of Kuwait	996.0	15.3	9.1%
8- Mabanee Co.	655.8	11.8	12.1%
9- Gulf Bank	637.1	12.4	8.0%
10- Ahli United Bank - Kuwait	573.4	10.7	11.9%
Total	18,979	13.04	12.4%

*: ROE is calculated based on TTM 9M-2019 net profit & shareholders' equity as of 30-September-19

Top Movers and Most Active Stocks

Today's Top % Gainers	Close (KWD)	Change (KWD)	Percent Change
Int'l Financial Advisors Co.	0.035	0.005	15.1%
Hayat Communications Co.	0.055	0.007	14.9%
National International Holding Co.	0.071	0.006	9.9%
Al Masaken Intl. Real Estate Dev. Co.	0.029	0.002	7.4%
Gulf Investment House	0.048	0.003	6.7%

Today's Top % Losers	Close (KWD)	Change (KWD)	Percent Change
Ahli United Bank - Kuwait	0.278	(0.042)	(8.9%)
A'ayan Leasing & Investment Co.	0.039	(0.003)	(8.0%)
Al TAMEER Real Estate Investment Co.	0.016	(0.001)	(8.0%)
Al-Deera Holding	0.018	(0.001)	(5.3%)
Ajial Real Estate Entertainment Co.	0.129	(0.007)	(5.1%)

Today's Most Active by Volume	Close (KWD)	Percent Change	Volume (Shares)
Ahli United Bank - Bahrain	0.193	(1.5%)	33,055,599
Kuwait International Bank	0.177	(2.7%)	13,586,954
Investors Holding Group Co.	0.013	5.9%	11,948,733
Kuwait Finance House	0.585	(1.8%)	9,582,871
National Bank of Kuwait	0.728	(1.8%)	6,462,690

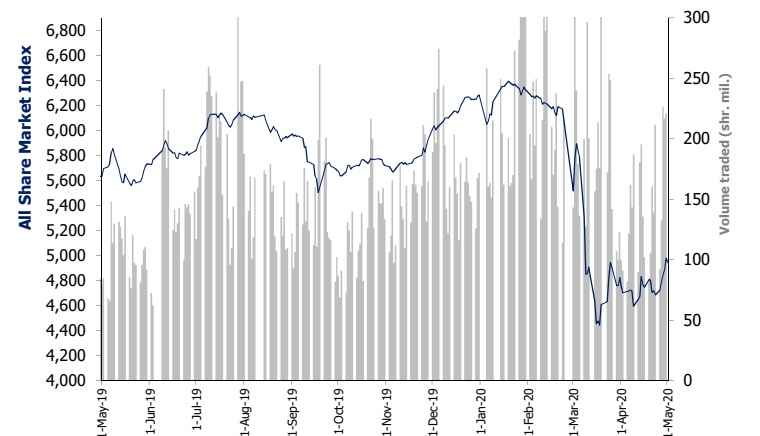
Source: Boursa Kuwait, Kamco Research

Market Capitalization - Sector Returns

	Market Cap. (KWD Mn)	DTD	DTD % Chg	MTD % Chg	YTD % Chg
Boursa Kuwait	28,226.3	▼	(1.9%)	(1.9%)	(22.3%)
Oil & Gas	225.9	▼	(0.2%)	(0.2%)	(12.4%)
Basic Materials	620.7	▼	(1.6%)	(1.6%)	(23.2%)
Industrials	2,610.6	▼	(1.2%)	(1.2%)	(20.7%)
Consumer Goods	223.8	▼	(1.3%)	(1.3%)	13.4%
Health Care	422.1	=	0.0%	0.0%	(3.8%)
Consumer Services	371.7	▼	(3.3%)	(3.3%)	(32.6%)
Telecommunications	2,985.1	▼	(2.2%)	(2.2%)	(12.7%)
Banks	16,349.9	▼	(2.3%)	(2.3%)	(25.7%)
Insurance	342.3	▼	(0.0%)	(0.0%)	(1.5%)
Real Estate	1,782.0	▼	(0.8%)	(0.8%)	(21.1%)
Financial Services	2,285.4	▼	(0.8%)	(0.8%)	(17.4%)
Technology	6.8	=	0.0%	0.0%	(3.4%)

Market Breadth	▲ 26	▼ 72	■ 76		
Benchmark Return	Closing	DTD	DTD	MTD	YTD
	Value	Chg	% Chg	% Chg	% Chg
Premier Market Index	5,248.07	(108.2)	(2.0%)	(2.0%)	(24.8%)
Main 50 Index	4,101.66	(85.6)	(2.0%)	(2.0%)	NA
Main Market Index	4,173.04	(53.4)	(1.3%)	(1.3%)	(15.0%)
All Share Market Index	4,885.51	(89.9)	(1.8%)	(1.8%)	(22.2%)
Market Cap (KWD Mn)	28,226.26	(551.5)	(1.9%)	(1.9%)	(22.3%)

Index Performance relative to Volume



Market Trading Data and Volatility

Trading Indicators	Today's Value	DTD Chg	DTD % Chg	Average Daily YTD 2020	YTD 2019
Volume (Shrs Mn)	149.7	(71.0)	(32.2%)	193.5	88.6
Value Traded (KWD Mn)	30.3	(13.0)	(30.1%)	40.0	16.9
No. of Trades	7,138	(1,763)	(19.8%)	9,142	3,810

Today's Most Active by Value	Close (KWD)	Percent Change	Value (KWD)
Ahli United Bank - Bahrain	0.193	(1.5%)	6,423,121
Kuwait Finance House	0.585	(1.8%)	5,620,662
National Bank of Kuwait	0.728	(1.8%)	4,752,038
Kuwait International Bank	0.177	(2.7%)	2,420,491
Zain	0.515	(2.8%)	1,463,627

Saudi Tadawul Daily Report

May 4, 2020

Index Performance relative to Volume



Sector Returns

	Market Cap. (SAR Mn)	DTD % Chg	MTD % Chg	YTD % Chg
	7,552,014.8	(5.7%)	(5.7%)	(16.3%)
Energy	6,027,407.3	(5.2%)	(5.2%)	(15.0%)
Materials	406,665.5	(8.0%)	(8.0%)	(25.0%)
Capital Goods	10,101.7	(8.8%)	(8.8%)	(21.4%)
Commercial & Professional Svc	6,628.8	(9.2%)	(9.2%)	(28.0%)
Transportation	9,918.2	(10.0%)	(10.0%)	(28.7%)
Consumer Durables & Apparel	2,042.1	(10.1%)	(10.1%)	(29.0%)
Consumer Services	17,897.7	(9.0%)	(9.0%)	(21.9%)
Media	4,720.0	(8.3%)	(8.3%)	(27.2%)
Retailing	27,629.3	(6.7%)	(6.7%)	(18.0%)
Food & Staples Retailing	9,417.1	(8.6%)	(8.6%)	11.1%
Food & Beverages	78,237.3	(5.1%)	(5.1%)	(1.1%)
Health Care Equipment & Svc	38,407.6	(8.0%)	(8.0%)	76.4%
Pharma, Biotech & Life Science	2,997.6	(7.5%)	(7.5%)	(8.3%)
Banks	496,635.7	(8.0%)	(8.0%)	(28.1%)
Diversified Financials	24,613.4	(8.2%)	(8.2%)	(18.3%)
Insurance	34,722.3	(8.4%)	(8.4%)	(10.6%)
Telecommunication Services	202,851.1	(3.4%)	(3.4%)	(11.8%)
Utilities	67,598.9	(7.7%)	(7.7%)	(21.9%)
REITs	12,729.7	(4.4%)	(4.4%)	(14.1%)
Real Estate Mgmt & Dev't	69,691.3	(9.3%)	(9.3%)	(20.7%)
Software & Services	1,102.1	(9.9%)	(9.9%)	18.5%

Sectors' MTD % Chg is based on the Change in market cap. and it might not conform with the benchmark % Chg for each sector

Top Movers and Most Active Stocks

Best Return Performers	Price (SAR)	Daily % Chg
Halwani Brothers Co	45.95	9.9%

Trading Indicators

Market Return	Closing Value	DTD Chg	DTD % Chg	MTD % Chg	YTD-20 % Chg
Tadawul All Share Index	6,585.58	(527.32)	(7.4%)	(7.4%)	(21.5%)
Market Cap (SAR Mn)	7,552,015	(453,054)	(5.7%)	(5.7%)	(16.3%)

Worst Return Performers	Price (SAR)	Daily % Chg
Leejam Sports Co JSC	55.80	(10.0%)
Al Gassim Investment Holding C	9.00	(10.0%)
Middle East Specialized Cables	7.65	(10.0%)
Al Jouf Cement Co	7.65	(10.0%)
Mobile Telecommunications Co S	10.98	(10.0%)

Trading Indicators	Today's Value	DTD Chg	DTD % Chg	Average Daily YTD-20	YTD-19
Volume (Mn Shares)	305.7	5.3	1.8%	191.6	123.1
Value Traded (SAR Mn)	5,531.6	(246.9)	(4.3%)	4,248.6	2,962.0
No. of Trades	246,153	10,424	4.4%	191,586	103,946

Market Breadth	▲ 1	▼ 194	= 5
----------------	-----	-------	-----

Most Active Stocks By Volume	Price (SAR)	Volume (*000 Shrs)
Dar Al Arkan Real Estate Devel	7.30	52,654
Alinma Bank	14.40	49,524
Seera Group Holding	13.98	15,241
Al Rajhi Bank	52.60	11,407
Saudi Arabian Oil Co	30.00	8,513

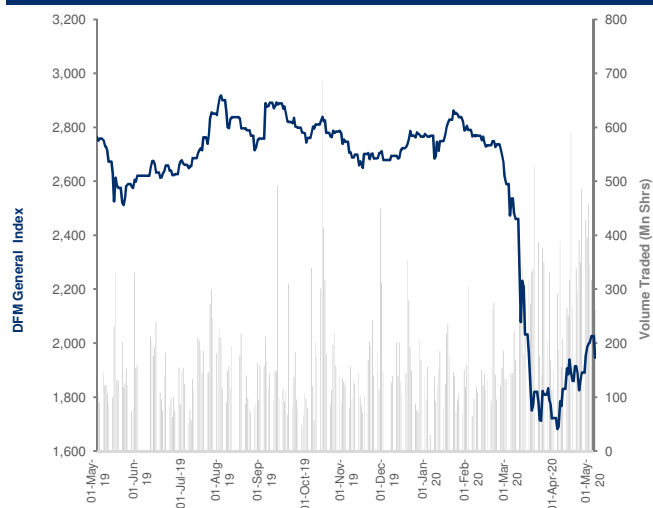
Most Active Stocks By Value	Price (SAR)	Daily % Chg	Value (SAR Mn)
Alinma Bank	14.40	(9.8%)	722.67
Al Rajhi Bank	52.60	(8.0%)	610.65
Dar Al Arkan Real Estate Devel	7.30	(10.0%)	387.11
Saudi Arabian Oil Co	30.00	(5.2%)	254.79
Seera Group Holding	13.98	(9.9%)	215.60

Source: Bloomberg, Kamco Research

Dubai Financial Market Daily Report

May 4, 2020

Index Performance relative to Volume



Sector Returns

	Market Cap. (AED Mn)	DTD % Chg	MTD % Chg	YTD % Chg
Dubai Financial Market	280,180.9	(2.8%)	(2.8%)	(24.8%)
Banking	149,005.1	(2.7%)	(2.7%)	(27.6%)
Consumer Staples	3,246.0	(1.7%)	(1.7%)	(2.0%)
Investment & Financial Services	13,506.9	(4.4%)	(4.4%)	(20.9%)
Insurance	4,771.4	(0.4%)	(0.4%)	(5.8%)
Industrial	5,144.7	0.0%	0.0%	0.1%
Real Estate	51,223.5	(4.7%)	(4.7%)	(34.7%)
Telecommunication	24,125.6	(0.8%)	(0.8%)	(4.9%)
Transportation	21,365.8	(1.9%)	(1.9%)	(14.6%)
Services	7,791.8	(1.9%)	(1.9%)	1.3%

Sectors' MTD % Chg is based on the Change in market cap. and it might not conform with the benchmark % Chg for each sector

Top Movers and Most Active Stocks

Best Return Performers	Price (AED)	Daily % Chg
DUBAI ISLAMIC INSURANCE CO	0.46	14.9%
AL Salam Bank Sudan	1.59	6.7%
DAR AL TAKAFUL	0.58	0.9%

Trading Indicators

Market Return	Closing Value	DTD Chg	DTD % Chg	MTD % Chg	YTD-20 % Chg
DFM General Index	1,946.34	(80.27)	(4.0%)	(4.0%)	(29.6%)
Market Cap (AED Mn)	280,181	(8,070)	(2.8%)	(2.8%)	(24.8%)

Worst Return Performers	Price (AED)	Daily % Chg
DUBAI INVESTMENTS PJSC	1.14	(5.0%)
AMLAK FINANCE	0.34	(5.0%)
Gulf Finance House	0.57	(5.0%)
DAMAC PROPERTIES DUBAI CO	0.59	(5.0%)
MASHREQBANK	65.00	(5.0%)

Trading Indicators	Today's Value	DTD Chg	DTD % Chg	Average Daily YTD-20	YTD-19
Volume (Mn Shares)	263.6	(53.2)	(16.8%)	218.9	141.5
Value Traded (AED Mn)	217.4	(67.9)	(23.8%)	232.9	199.1
No. of Trades	4,183	(1,319)	(24.0%)	3,547	2,538

Market Breadth	▲ 3	▼ 30	= 29
----------------	-----	------	------

Most Active Stocks By Volume	Price (AED)	Volume (*'000 Shrs)
ISLAMIC ARAB INSURANCE COM	0.53	39,629
UNION PROPERTIES PJSC	0.29	32,120
Gulf Finance House	0.57	26,888
DEYAAR DEVELOPMENT PJSC	0.28	21,618
DXB ENTERTAINMENTS PJSC	0.15	18,754

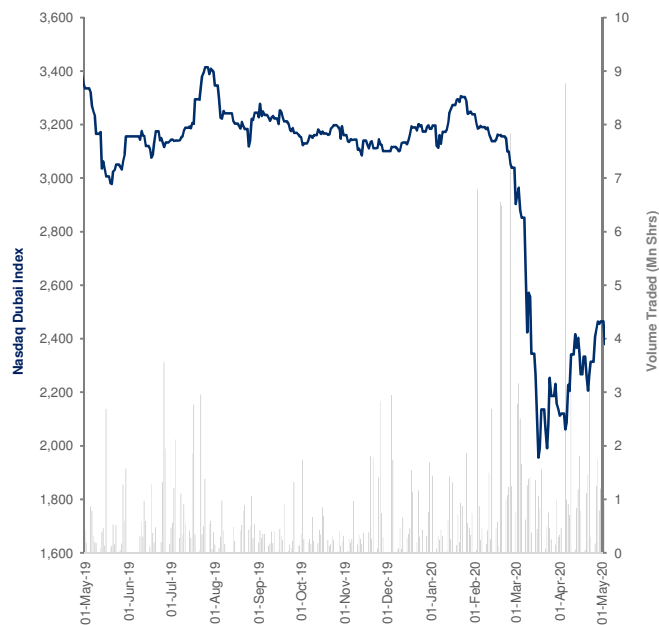
Most Active Stocks By Value	Price (AED)	Daily % Chg	Value (AED Mn)
DUBAI ISLAMIC BANK	3.53	(3.81%)	34.44
EMAAR PROPERTIES PJSC	2.60	(4.76%)	33.68
ISLAMIC ARAB INSURANCE COM	0.53	(4.85%)	22.04
Gulf Finance House	0.57	(4.99%)	15.59
EMAAR DEVELOPMENT	2.19	(4.78%)	12.13

Source: Bloomberg, Kamco Research

Nasdaq Dubai Daily Report

May 4, 2020

Index Performance relative to Volume



Sector Returns

	Market Cap. (USD Mn)	DTD % Chg	MTD % Chg	YTD % Chg
Nasdaq Dubai	39,127.1	0.4%	0.4%	7.0%
Al Baraka Banking Group	323.1	0.0%	0.0%	(16.1%)
BLME Holdings plc	117.4	0.0%	0.0%	0.0%
DEPA Limited (AED)	51.9	0.0%	0.0%	(3.1%)
DP World	13,271.7	0.0%	0.0%	22.1%
Emirates REIT (CEIC) Limited	62.9	0.0%	0.0%	(63.4%)
ENBD REIT (CEIC) Limited	88.0	0.0%	0.0%	(27.2%)
Hikma Pharmaceuticals GDR	7,049.4	0.0%	0.0%	9.5%
Nasdaq, Inc.	17,522.8	0.9%	0.9%	(1.0%)
Orascom Construction Limited	639.9	0.0%	0.0%	(10.2%)

Sectors' MTD % Chg is based on the Change in market cap. and it might not conform with the benchmark % Chg for each sector

Top Movers and Most Active Stocks

Best Return Performers	Price (USD)	Daily % Chg
DP World	16.14	0.9%
Nasdaq, Inc.	106.62	0.9%

Worst Return Performers	Price (USD)	Daily % Chg
Emirates REIT (CEIC) Limited	0.21	(2.4%)

Most Active Stocks By Volume	Price (USD)	Volume ('000 Shrs)
Emirates REIT (CEIC) Limited	0.21	953
DP World	16.14	1

Trading Indicators

Market Return	Closing Value	DTD Chg	DTD % Chg	MTD % Chg	YTD-20 % Chg
FTSE Nasdaq Dubai UAE 20	2,380.13	(84.09)	(3.4%)	(3.4%)	(25.3%)
Market Cap (USD Mn)	39,127	163	0.4%	0.4%	7.0%

Trading Indicators	Today's Value	DTD Chg	DTD % Chg	Average Daily YTD-20	YTD-19
Volume (Mn Shares)	0.95	(0.2)	(20.7%)	1.3	0.66
Value Traded (USD Mn)	0.20	(17.5)	(98.8%)	13.6	6.91
No. of Trades	12	(96)	(88.9%)	136	149

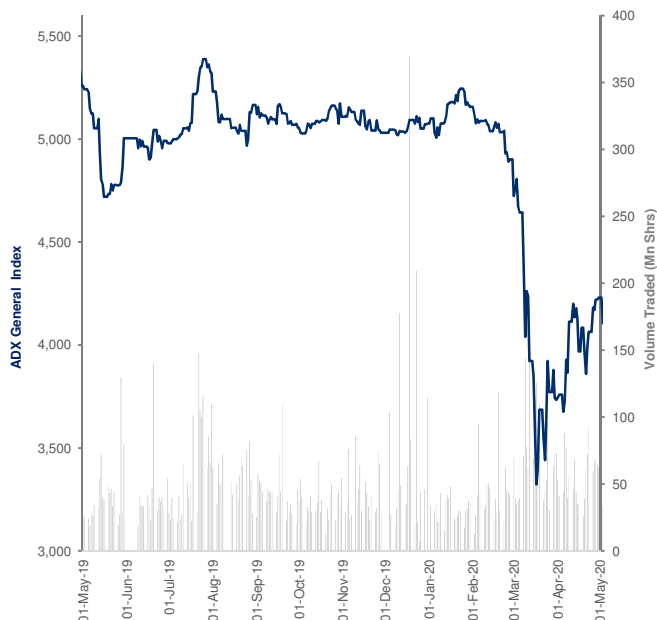
Market Breadth	▲ 2	▼ 2	= 5
----------------	-----	-----	-----

Most Active Stocks By Value	Price (USD)	Daily % Chg	Value (USD Mn)
Emirates REIT (CEIC) Limited	0.21	(2.38%)	0.20
DP World	16.14	0.94%	0.01

Abu Dhabi Securities Exchange Daily Report

May 4, 2020

Index Performance relative to Volume



Sector Returns

	Market Cap. (AED Mn)	DTD % Chg	MTD % Chg	YTD % Chg
ADX	476,325.8	(2.6%)	(2.6%)	(12.4%)
Banks	193,723.1	(2.9%)	(2.9%)	(29.1%)
Investment & Financial Services	1,507.1	0.1%	0.1%	(24.4%)
Real Estate	15,011.1	(4.9%)	(4.9%)	(19.6%)
Energy	43,997.2	(0.8%)	(0.8%)	(6.1%)
Consumer Staples	49,148.0	(4.7%)	(4.7%)	248.2%
Industrial	5,958.5	(0.5%)	(0.5%)	(10.9%)
Insurance	8,346.3	0.1%	0.1%	5.9%
Telecommunication	150,566.3	(2.3%)	(2.3%)	(8.8%)
Services	8,068.1	0.6%	0.6%	(10.2%)

Sectors' MTD % Chg is based on the Change in market cap. and it might not conform with the benchmark % Chg for each sector

Top Movers and Most Active Stocks

Best Return Performers	Price (AED)	Daily % Chg
NATIONAL TAKAFUL COMPANY	0.80	11.1%
NATIONAL BANK OF UMM AL QAIW	2.00	10.5%
NATIONAL CORP TOURISM & HOTE	1.80	5.9%
GULF PHARMACEUTICAL IND PSC	0.73	5.8%
ABU DHABI NATIONAL ENERGY CO	0.72	3.8%

Worst Return Performers	Price (AED)	Daily % Chg
COMMERCIAL BANK INTERNATIONA	0.70	(5.0%)
International Holdings Company PJSC	25.68	(5.0%)
ALDAR PROPERTIES PJSC	1.73	(4.9%)
DANA GAS	0.70	(4.9%)
METHAQ TAKAFUL INSURANCE	0.59	(4.9%)

Most Active Stocks By Volume	Price (AED)	Volume ('000 Shrs)
ESHRAQ PROPERTIES CO PJSC	0.28	6,293
ABU DHABI ISLAMIC BANK	3.42	4,549
DANA GAS	0.70	4,335
RAK PROPERTIES	0.35	4,183
ALDAR PROPERTIES PJSC	1.73	3,358

Trading Indicators

Market Return	Closing Value	DTD Chg	DTD % Chg	MTD % Chg	YTD-20 % Chg
ADX General Index	4,105.68	(124.69)	(2.9%)	(2.9%)	(19.1%)
Market Cap (AED Mn)	476,326	(12,900)	(2.6%)	(2.6%)	(12.4%)

Trading Indicators	Today's Value	DTD Chg	DTD % Chg	Average Daily YTD-20	YTD-19
Volume (Mn Shares)	33.4	(28.5)	(46.0%)	52.3	50.3
Value Traded (AED Mn)	61.4	(95.8)	(60.9%)	151.2	194.8
No. of Trades	962	(1,302)	(57.5%)	1,781	1,557

Market Breadth	▲ 8	▼ 23	= 33
----------------	-----	------	------

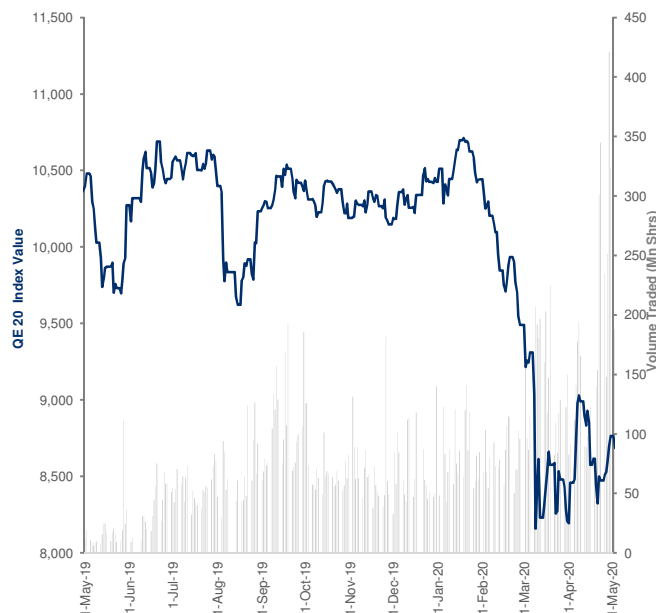
Most Active Stocks By Value	Price (AED)	Daily % Chg	Value (AED Mn)
ABU DHABI ISLAMIC BANK	3.42	(4.74%)	15.79
ABU DHABI COMMERCIAL BANK	4.31	(2.93%)	9.37
International Holdings Company PJSC	25.68	(4.96%)	8.87
ALDAR PROPERTIES PJSC	1.73	(4.95%)	5.87
EMIRATES TELECOM GROUP CO	15.06	(2.84%)	3.87

Source: Bloomberg, Kamco Research

Qatar Exchange Daily Report

May 4, 2020

Index Performance relative to Volume



Sector Returns

	Market Cap. (QAR Mn)	DTD % Chg	MTD % Chg	YTD % Chg
Qatar Exchange	490,343.9	(0.7%)	(0.7%)	(15.9%)
Banking & Finance Sector	270,511.0	(0.9%)	(0.9%)	(13.3%)
Goods & Consumer Services	28,152.2	(0.3%)	(0.3%)	(20.5%)
Industrial Sector	99,345.2	0.7%	0.7%	(25.6%)
Insurance Sector	10,281.5	(0.2%)	(0.2%)	(29.5%)
Real Estate	34,926.6	(1.1%)	(1.1%)	(3.8%)
Telecom	24,228.2	(3.6%)	(3.6%)	(12.2%)
Transport	22,899.1	(1.4%)	(1.4%)	(2.3%)

Sectors' MTD % Chg is based on the Change in market cap. and it might not conform with the benchmark % Chg for each sector

Top Movers and Most Active Stocks

Best Return Performers	Price (QAR)	Daily % Chg
Gulf International Services QS	1.42	10.0%
Qatar German Co for Medical De	1.01	10.0%
Islamic Holding Group QSC	2.00	5.0%
Qatar Oman Investment Co QSC	0.65	4.5%
Investment Holding Group	0.50	4.4%

Worst Return Performers	Price (QAR)	Daily % Chg
Salam International Investment	0.29	(6.4%)
Gulf Warehousing Co	4.68	(4.4%)
Barwa Real Estate Co	2.74	(4.1%)
OOREDOO QPSC	6.16	(3.7%)
Vodafone Qatar QSC	1.06	(2.9%)

Most Active Stocks By Volume	Price (QAR)	Volume ('000 Shrs)
Ezdan Holding Group QSC	0.75	29,287
Salam International Investment	0.29	25,456
Investment Holding Group	0.50	16,961
Aamal Co	0.60	16,061
Qatar German Co for Medical De	1.01	14,262

Trading Indicators

Market Return	Closing Value	DTD Chg	DTD % Chg	MTD % Chg	YTD-20 % Chg
QE 20 Index	8,687.59	(76.46)	(0.9%)	(0.9%)	(16.7%)
Market Cap (QAR Mn)	490,344	(3,493)	(0.7%)	(0.7%)	(15.9%)

Trading Indicators	Today's Value	DTD Chg	DTD % Chg	Average Daily YTD-20	YTD-19
Volume ('Mn Shares)	187.9	(136.2)	(42.0%)	122.3	11.0
Value Traded (QAR Mn)	244.2	(240.0)	(49.6%)	282.8	280.8
No. of Trades	6,457	(6,766)	(51.2%)	7,370	5,861

Market Breadth	▲ 18	▼ 27	= 2
----------------	------	------	-----

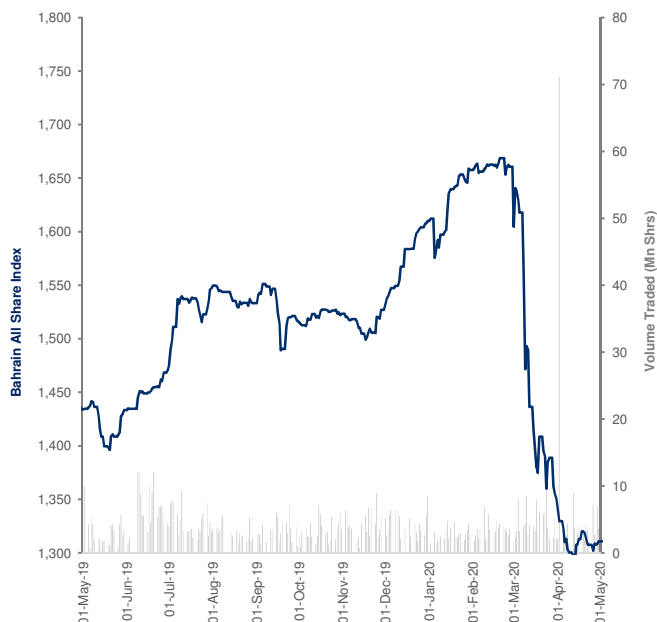
Most Active Stocks By Value	Price (QAR)	Daily % Chg	Value (QAR Mn)
Ezdan Holding Group QSC	0.75	0.40%	21.97
Qatar Fuel QSC	16.08	0.44%	17.91
Barwa Real Estate Co	2.74	(4.06%)	16.26
Qatar German Co for Medical De	1.01	10.00%	14.24
Al Khaleej Takaful Group QSC	1.89	2.72%	13.06

Source: Bloomberg, Kamco Research

Bahrain Bourse Daily Report

May 4, 2020

Index Performance relative to Volume



Sector Returns

	Market Cap. (BHD Mn)	DTD % Chg	MTD % Chg	YTD % Chg
Bahrain Bourse	8,267.6	0.1%	0.1%	(18.4%)
Commercial Banks	4,317.5	0.3%	0.3%	(23.7%)
Investment	1,993.2	(0.1%)	(0.1%)	(14.5%)
Insurance	144.7	0.0%	0.0%	2.5%
Services	1,181.9	0.0%	0.0%	(6.2%)
Hotel & Tourism	139.0	0.0%	0.0%	(0.2%)
Industrial	491.4	0.0%	0.0%	(19.4%)

Sectors' MTD % Chg is based on the Change in market cap. and it might not conform with the benchmark % Chg for each sector

Top Movers and Most Active Stocks

Best Return Performers	Price (BHD)	Daily % Chg
Ahli United Bank BSC	0.63	0.8%
GFH FINANCIAL GROUP BSC	0.16	0.6%
National Bank of Bahrain BSC	0.62	0.2%

Trading Indicators

Market Return	Closing Value	DTD Chg	DTD % Chg	MTD % Chg	YTD-20 % Chg
Bahrain All Share Index	1,310.73	2.08	0.2%	0.2%	(18.6%)
Market Cap (BHD Mn)	8,268	11	0.1%	0.1%	(18.4%)

Worst Return Performers	Price (BHD)	Daily % Chg
Khaleeji Commercial Bank BSC	0.04	(8.9%)
Al Salam Bank-Bahrain BSC	0.07	(3.0%)

Trading Indicators	Today's Value	DTD Chg	DTD % Chg	Average Daily YTD-20	YTD-19
Volume ('000 Shares)	3,605	(3,251)	(47.4%)	4,424.7	5,717.0
Value Traded (BHD '000)	412	(2,534)	(86.0%)	934.6	1,439.6
No. of Trades	44	3	7.3%	63	95

Market Breadth	▲ 3	▼ 2	= 38
----------------	-----	-----	------

Most Active Stocks By Volume	Price (BHD)	Volume ('000 Shrs)
GFH FINANCIAL GROUP BSC	0.16	2,114
Ahli United Bank BSC	0.63	700
Al Salam Bank-Bahrain BSC	0.07	357
Al Baraka Banking Group BSC	0.26	184
Bahrain Telecommunications Co	0.38	135

Most Active Stocks By Value	Price (BHD)	Daily % Chg	Value (BHD Mn)
Ahli United Bank BSC	0.63	0.80%	0.17
GFH FINANCIAL GROUP BSC	0.16	0.63%	0.13
Bahrain Telecommunications Co	0.38	0.00%	0.05
Al Salam Bank-Bahrain BSC	0.07	(2.99%)	0.02
Al Baraka Banking Group BSC	0.26	0.00%	0.02

Source: Bloomberg, Kamco Research

Muscat Securities Market Daily Report

May 4, 2020

Index Performance relative to Volume



Sector Returns

	Market Cap. (OMR Mn)	DTD % Chg	MTD % Chg	YTD % Chg
Muscat Securities Market	5,880.3	0.1%	0.1%	(10.7%)
Financial	3,023.0	0.3%	0.3%	(14.8%)
Industrial	673.2	0.1%	0.1%	(3.0%)
Services	2184.1	(0.2%)	(0.2%)	(6.7%)

Sectors' MTD % Chg is based on the Change in market cap. and it might not conform with the benchmark % Chg for each sector

Top Movers and Most Active Stocks

Best Return Performers	Price (OMR)	Daily % Chg
Al Maha Ceramics Co	0.19	4.4%
Al Anwar Ceramic Tiles Co.	0.15	2.8%
Voltamp Energy Co.	0.16	2.6%
HSBC BANK OMAN	0.10	1.0%
Bank Muscat	0.33	0.6%

Worst Return Performers	Price (OMR)	Daily % Chg
Gulf Investment Services Co.	0.06	(3.4%)
Raysut Cement Co.	0.37	(2.1%)
Oman Qatari Telecommunications Co.	0.41	(1.9%)
Sharqiya Investment Holding Co.	0.07	(1.4%)
Al Madina Takaful Co.	0.07	(1.4%)

Most Active Stocks By Volume	Price (OMR)	Volume ('000 Shrs)
Al Anwar Holding	0.07	1,750
Al Anwar Ceramic Tiles Co.	0.15	1,578
Bank Muscat	0.33	321
AL MADINA INVESMENT H olding Co.	0.02	295
Al Jazeira Services Co.	0.16	258

Trading Indicators

Market Return	Closing Value	DTD Chg	DTD % Chg	MTD % Chg	YTD-20 % Chg
MSM 30 Index	3,538.15	(1.31)	(0.0%)	(0.0%)	(11.1%)
Market Cap (OMR Mn)	5,880.3	3.7	0.1%	0.1%	(10.7%)

Trading Indicators	Today's Value	DTD Chg	DTD % Chg	Average Daily YTD-2020	YTD-19
Volume ('000 Shares)	5,484.2	(4,775.2)	(46.5%)	12,077.1	15,152.6
Value Traded (OMR '000)	847.8	(749.0)	(46.9%)	2,491.6	2,421.5
No. of Trades	333	(222)	(40.0%)	522	485

Market Breadth	▲ 6	▼ 7	= 99
----------------	-----	-----	------

Most Active Stocks By Value	Price (OMR)	Daily % Chg	Value (OMR Mn)
Al Anwar Ceramic Tiles Co.	0.15	2.78%	0.23
Al Anwar Holding	0.07	0.00%	0.13
Oman Telecommunications Co.	0.64	0.00%	0.11
Bank Muscat	0.33	0.62%	0.10
Oman Flour Mills	0.66	0.61%	0.07

Source: Bloomberg, KAMCO Research

The Egyptian Exchange Daily Report

(The report covers the top 60 companies by market cap on the exchange)

May 4, 2020

Index Performance relative to Volume



Sector Returns

	Market Cap. (EGP Mn)	DTD % Chg	MTD % Chg	YTD % Chg
Top 60 Stocks	428,368.1	(3.0%)	(3.0%)	(23.7%)
Banks	147,476.9	(2.0%)	(2.0%)	(23.2%)
Basic Resources	15,075.6	(5.0%)	(5.0%)	(31.0%)
Chemicals	22,937.2	(4.9%)	(4.9%)	(28.2%)
Construction and Materials	14,572.3	(3.6%)	(3.6%)	(23.3%)
Financial Services excluding Banks	35,820.0	(3.6%)	(3.6%)	(30.3%)
Food and Beverage	8,066.4	(3.1%)	(3.1%)	(18.6%)
Healthcare	4,870.3	0.0%	0.0%	(26.1%)
Industrial Goods, Services, Automobile:	34,320.3	(5.4%)	(5.4%)	(32.3%)
Media	639.1	(6.1%)	(6.1%)	(21.4%)
Oil and Gas	3,306.2	(1.9%)	(1.9%)	(29.5%)
Personal and Household Products	31,722.0	(1.9%)	(1.9%)	(23.1%)
Real Estate	41,816.3	(5.9%)	(5.9%)	(29.9%)
Telecommunication	47,531.5	(1.0%)	(1.0%)	3.3%
Travel & Leisure	20,214.0	(2.4%)	(2.4%)	(20.2%)

Sectors' MTD % Chg is based on the Change in market cap. and it might not conform with the benchmark % Chg for each sector

Top Movers and Most Active Stocks

Best Return Performers	Price (EGP)	Daily % Chg
Egyptian Financial & Industrial SAE	9.53	0.4%
Egyptian Int'l Pharmaceutical Industries	49.11	0.0%

Trading Indicators

Market Return	Closing Value	DTD Chg	DTD % Chg	MTD % Chg	YTD-20 % Chg
EGX 30 Index	10,199.85	(354.19)	(3.4%)	(3.4%)	(26.9%)
Market Cap (EGP Mn)	428,368	(13,374)	(3.0%)	(3.0%)	(23.7%)

Worst Return Performers	Price (EGP)	Daily % Chg
Ghabbour Auto	1.72	(8.2%)
Elsaeed Contracting & Real Est. Inv.	0.47	(7.5%)
El Nasr Clothes & Textiles	0.70	(7.3%)
Pioneers Holding Co. for Financial Inv.	3.49	(7.2%)
Medinet Nasr Housing	2.85	(7.2%)

Trading Indicators	Today's Value	DTD Chg	DTD % Chg	Average Daily YTD-20	YTD-19
Volume (Mn Shares)	161.1	38.5	31.4%	93.0	99.0
Value Traded (EGP Mn)	576.2	(150.6)	(20.7%)	527.4	650.9
No. of Trades	22,094	5,474	32.9%	14,246	15,306

Market Breadth	▲ 2 ▼ 50 = 7
----------------	--------------

Most Active Stocks By Volume	Price (EGP)	Volume (*000 Shrs)
Qalaa Holdings SAE	1.39	28,695
Palm Hills Developments SAE	1.21	19,565
Medinet Nasr Housing	2.85	11,388
Ghabbour Auto	1.72	9,884
Egyptian Iron & Steel Co	1.53	9,065

Most Active Stocks By Value	Price (EGP)	Daily % Chg	Value (EGP Mn)
Commercial International Bank	62.04	(2.99%)	82.99
Qalaa Holdings SAE	1.39	(5.45%)	39.84
ElSewedy Electric Co	8.39	(5.73%)	33.77
Ezz Steel Co SAE	6.88	(5.88%)	33.18
Medinet Nasr Housing	2.85	(7.17%)	32.44

Source: Bloomberg, Kamco Research

Disclaimer & Important Disclosures

Kamco Invest is authorized and fully regulated by the Capital Markets Authority ("CMA, Kuwait") and partially regulated by the Central Bank of Kuwait ("CBK"). This document is provided for informational purposes only. Nothing contained in this document constitutes investment, an offer to invest, legal, tax or other advice or guidance and should be disregarded when considering or making investment decisions. In preparing this document, Kamco Invest did not take into account the investment objectives, financial situation and particular needs of any particular person. Accordingly, before acting on this document, investors should independently evaluate the investments and strategies referred to herein and make their own determination of whether it is appropriate in light of their own financial circumstances and objectives. The entire content of this document is subject to copyright with all rights reserved. This research and the information contained herein may not be reproduced, distributed or transmitted in Kuwait or in any other jurisdiction to any other person or incorporated in any way into another document or other material without our prior written consent.

Analyst Certification

Each of the analysts identified in this report certifies, with respect to the sector, companies or securities that the individual analyses, that (1) the views expressed in this report reflect his or her personal views about all of the subject companies and securities and (2) no part of his or her compensation was, is or will be directly or indirectly dependent on the specific recommendations or views expressed in this report.

Kamco Invest Ratings

Kamco Invest research is based on the analysis of regional and country economics, industries and company fundamentals. Kamco Invest company research reflects a long-term (12-month) target price for a company or stock. The ratings bands are:

***Outperform:** Target Price represents expected returns $\geq 10\%$ in the next 12 months

***Neutral:** Target Price represents expected returns between -10% and $+10\%$ in the next 12 months

***Underperform:** Target Price represents an expected return of $<-10\%$ in the next 12 months

In certain circumstances, ratings may differ from those implied by a fair value target using the criteria above. Kamco Invest policy is to maintain up-to-date fair value targets on the companies under its coverage, reflecting any material changes to the analyst's outlook on a company. Share price volatility may cause a stock to move outside the rating range implied by Kamco Invest's fair value target. Analysts may not necessarily change their ratings if this happens, but are expected to disclose the rationale behind their view to Kamco Invest clients.

Any terms and conditions proposed by you which are in addition to or which conflict with this Disclaimer are expressly rejected by Kamco Invest and shall be of no force or effect. The information contained in this document is based on current trade, statistical and other public information we consider reliable. We do not represent or warrant that such information is fair, accurate or complete and it should not be relied upon as such. Kamco Invest has no obligation to update, modify or amend this document or to otherwise notify a recipient thereof in the event that any opinion, forecast or estimate set forth herein, changes or subsequently becomes inaccurate. The publication is provided for informational uses only and is not intended for trading purposes. The information on publications does not give rise to any legally binding obligation and/or agreement, including without limitation any obligation to update such information. You shall be responsible for conducting your own investigation and analysis of the information contained or referred to in this document and of evaluating the merits and risks involved in the securities forming the subject matter of this or other such document. Moreover, the provision of certain data/information in the publication may be subject to the terms and conditions of other agreements to which Kamco Invest is a party.

Nothing in this document should be construed as a solicitation or offer, or recommendation, to acquire or dispose of any investment or to engage in any other transaction, or to provide any investment advice or service. This document is directed at Professional Clients and not Retail Clients within the meaning of CMA rules. Any other persons in receipt of this document must not rely upon or otherwise act upon it. Entities and individuals into whose possession this document comes are required to inform themselves about, and observe such restrictions and should not rely upon or otherwise act upon this document where it is unlawful to make to such person such an offer or invitation or recommendation without compliance with any authorization, registration or other legal requirements.

'Kamco Investment Company (DIFC) Limited ("Kamco Invest DIFC"), Office 205, Level 2, Gate Village 1, Dubai International Financial Centre, a wholly owned subsidiary of Kamco Investment Company KSC (Public), is regulated by the Dubai Financial Services Authority (DFSA). Kamco Invest DIFC may only undertake the financial services activities that fall within the scope of its existing DFSA licence. The information in this document may be distributed by Kamco Invest DIFC on behalf of Kamco Investment Company KSC (Public). This document is intended for Professional Clients or Market Counterparties only as defined by the DFSA, and no other person should act upon it.

Risk Warnings

Any prices, valuations or forecasts are indicative and are not intended to predict actual results, which may differ substantially from those reflected. The value of an investment may go up as well as down. The value of and income from any investment may fluctuate from day to day as a result of changes in relevant economic markets (including, without limitation, foreseeable or unforeseeable changes in interest rates, foreign exchange rates, default rates, prepayment rates, political or financial conditions, etc.).

Past performance is not indicative of future results. Any opinions, estimates, valuations or projections (target prices and ratings in particular) are inherently imprecise and a matter of judgment. They are statements of opinion and not of fact, based on current expectations, estimates and projections, and rely on beliefs and assumptions. Actual outcomes and returns may differ materially from what is expressed or forecasted. There are no guarantees of future performance. Certain transactions, including those involving futures, options, and other derivatives, give rise to substantial risk and are not suitable for all investors. This document does not propose to identify or to suggest all of the risks (direct or indirect) which may be associated with the investments and strategies referred to herein.

Conflict of Interest

Kamco Invest and its affiliates provide full investment banking services, and they and their directors, officers and employees, may take positions which conflict with the views expressed in this document. Salespeople, traders, and other professionals of Kamco Invest may provide oral or written market commentary or trading strategies to our clients and our proprietary trading desks that reflect opinions that are contrary to the opinions expressed in this document. Our asset management area, our proprietary trading desks and investing businesses may make investment decisions that are inconsistent with the recommendations or views expressed in this document. Kamco Invest may have or seek investment banking or other business relationships for which it will receive compensation from the companies that are the subject of this document. Facts and views presented in this document have not been reviewed by, and may not reflect information known to, professionals in other Kamco Invest business areas, including investment banking personnel. United Gulf Bank, Bahrain owns majority of Kamco Invest's shareholding and this ownership may create, or may create the appearance of, conflicts of interest.

No Liability & Warranty

Kamco Invest makes neither implied nor expressed representations or warranties and, to the fullest extent permitted by applicable law, we hereby expressly disclaim any and all express, implied and statutory representations and warranties of any kind, including, without limitation, any warranty as to accuracy, timeliness, completeness, and fitness for a particular purpose and/or non-infringement. Kamco Invest will accept no liability in any event including (without limitation) your reliance on the information contained in this document, any negligence for any damages or loss of any kind, including (without limitation) direct, indirect, incidental, special or consequential damages, expenses or losses arising out of, or in connection with your use or inability to use this document, or in connection with any error, omission, defect, computer virus or system failure, or loss of any profit, goodwill or reputation, even if expressly advised of the possibility of such loss or damages, arising out of or in connection with your use of this document. We do not exclude our duties or liabilities under binding applicable law.



KAMCO Investment Company - K.S.C. (Public)

Al-Shaheed Tower, Khalid Bin Al-Waleed Street- Sharq

P.O. BOX : 28873, Safat 13149, State of Kuwait

Tel: (+965) 2233 6600 Fax: (+965) 2249 2395

Email : kamcoird@kamcoinvest.com

Website : www.kamcoinvest.com

Kamco Invest