

MENA Markets Daily Report

March 16, 2026

	Country	Benchmark		Index Value	DTD Change	YTD % 2026	2025 % Change
MENA Countries							
<i>In this Report...</i>	Kuwait	Premier Market Index	▼	9,178.47	(0.1%)	(3.4%)	21.2%
	Kuwait	Main 50 Index	▲	8,283.57	0.3%	(4.7%)	27.7%
Kuwait	2	Kuwait	▲	8,001.13	0.0%	(3.6%)	20.2%
Saudi Arabia	3	Kuwait	▼	8,604.12	(0.1%)	(3.4%)	21.0%
UAE - Dubai	4	Saudi Arabia	▼	10,886.63	(0.1%)	3.8%	(12.8%)
UAE - Nasdaq Dubai	5	UAE - Dubai	▼	5,426.28	(1.7%)	(10.3%)	17.2%
UAE - Abu Dhabi	6	UAE - Nasdaq Dubai	▼	4,391.00	(2.8%)	(9.5%)	15.4%
Qatar	7	UAE - Abu Dhabi	▼	9,480.14	(1.6%)	(5.1%)	6.1%
Bahrain	8	Qatar	▼	10,461.00	(0.2%)	(2.8%)	1.8%
Oman	9	Bahrain	▼	1,938.72	(0.5%)	(6.2%)	4.1%
Egypt	10	Oman	▼	7,704.67	(0.5%)	31.3%	28.2%
Jordan	11	Egypt	▼	45,926.93	(1.9%)	9.8%	40.6%
Tunisia	12	Jordan	=	3,658.64	0.0%	1.3%	45.1%
Morocco	13	Tunisia	▼	15,413.59	(0.6%)	14.6%	35.1%
		Morocco	▼	16,855.82	(1.8%)	(10.6%)	27.6%
Emerging Markets							
	China	SSE Composite Index	▼	4,095.45	(0.8%)	3.2%	18.4%
	India	SENSEX	▼	74,563.92	(1.9%)	(12.5%)	9.1%
	Brazil	BOVESPA Stock Index	▼	177,653.31	(0.9%)	10.3%	34.0%
	Mexico	BOLSA Index	▼	65,648.91	(0.7%)	2.1%	29.9%
	Emerging Markets	MSCI EM Index	▼	1,469.47	(1.5%)	4.6%	30.6%
Global Markets							
	World	MSCI ACWI Index	▼	999.21	(0.9%)	(1.5%)	20.6%
	Asia	MSCI Asia Pacific	▼	758.44	(1.4%)	5.0%	26.8%
	Europe	DJ Stoxx 600	▼	595.85	(0.5%)	0.6%	16.7%
	Europe	FTSEurofirst 300	▼	2,378.71	(0.5%)	0.8%	17.1%
	U.S.A	S&P 500	▼	6,632.19	(0.6%)	(3.1%)	16.4%
	U.S.A	DJIA	▼	46,558.47	(0.3%)	(3.1%)	13.0%
	U.S.A	NASDAQ Composite	▼	22,105.36	(0.9%)	(4.9%)	20.4%
	UK	FTSE 100	▼	10,261.15	(0.4%)	3.3%	21.5%
	Germany	DAX	▼	23,447.29	(0.6%)	(4.3%)	23.0%
	Japan	NIKKEI 225	▼	53,819.61	(1.2%)	6.9%	26.2%
	Hong Kong	HANG SENG INDEX	▼	25,465.60	(1.0%)	(0.6%)	27.8%
Currencies							
	USD	USD vs. World Currencies Basket	▲	100.36	0.6%	2.07%	(9.4%)
	GBP/USD	British Pound / USD Cross	▼	1.32	(0.85%)	(1.82%)	7.7%
	EUR/USD	Euro / USD Cross	▼	1.14	(0.83%)	(2.80%)	13.4%
	KWD/USD	Kuwaiti Dinar / USD Cross	▼	3.25	(0.18%)	0.04%	0.2%
Other Asset Classes							
	Oil	Brent	▲	103.14	2.7%	69.5%	(18.5%)
	Oil	NYMEX	▲	98.71	3.1%	71.9%	(19.9%)
	Natural Gas	NYMEX Natural Gas (USD/MMBtu)	▼	3.13	(3.2%)	(0.7%)	(15.1%)
	Gold	Gold Spot \$/Oz	▼	5,019.49	(1.2%)	16.2%	64.6%
	Silver	Silver Spot \$/Oz	▼	80.59	(3.9%)	12.5%	148.0%
	Bitcoin	Bitcoin USD Cross	▼	70,824.49	(0.7%)	(19.2%)	(6.5%)

Source: Bloomberg & Kamco Research. Note : Data as of last trading day.

Investment Strategy & Research
research@kamcoinvest.com

P.O.Box 28873,Safat 13149 Kuwait
Tel: (965) 2233 6600, Extn: 6982/6912
Fax: (965) 2249 2395

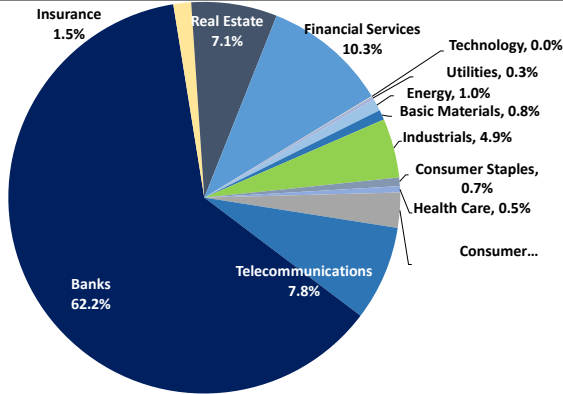
<http://www.kamcoinvest.com>

Kamco Investment Company - K.S.C
(Public)

Boursa Kuwait Daily Report

March 15, 2026

Sector Weight by Market Cap



Top 10 Companies by Market Capitalization

Company Name	Market Cap. (Mn KWD)	P/E (X)	ROE* (%)
1- Kuwait Finance House	15,021.9	24.6	10.9%
2- National Bank of Kuwait	8,244.4	13.5	13.8%
3- Boubayan Bank	3,061.1	30.3	10.7%
4- Zain	2,397.2	15.0	13.0%
5- Mabanee Co.	1,441.9	17.3	11.6%
6- Gulf Bank	1,341.5	23.0	7.0%
7- Warba Bank	1,331.5	28.9	5.6%
8- Commercial Bank of Kuwait	1,075.9	6.8	21.2%
9- National Mobile Telecom Co.	887.1	11.8	12.4%
10- Burgan Bank	806.9	17.7	5.2%
Total	35,609	18.26	11.6%

*: ROE is calculated based on TTM 9M-2025 net profit & shareholders' equity as of 30-September-25

Top Movers and Most Active Stocks

Today's Top % Gainers	Close (KWD)	Change (KWD)	Percent Change
Al Kout for Industrial Projects Co.	0.866	0.078	9.9%
National Industries Co.	0.260	0.020	8.3%
National Cleaning Co.	0.121	0.009	8.0%
Equipment Holding Co.	0.200	0.012	6.4%
Gulf Investment House	0.497	0.029	6.2%

Today's Top % Losers	Close (KWD)	Change (KWD)	Percent Change
The Energy House Co.	0.207	(0.021)	(9.2%)
Kuwait Hotels Co.	0.216	(0.017)	(7.3%)
National Industries Group	0.244	(0.014)	(5.4%)
Independent Petroleum Group	0.674	(0.035)	(4.9%)
Advanced Technology Co.	0.572	(0.028)	(4.7%)

Today's Most Active by Volume	Close (KWD)	Percent Change	Volume (Shares)
National Cleaning Co.	0.121	8.0%	17,731,681
National Industries Group	0.244	(5.4%)	15,313,038
GFH Financial Group	0.175	(1.1%)	15,017,861
Burgan Bank	0.212	1.0%	7,849,070
Kuwait Finance House	0.813	0.4%	6,278,299

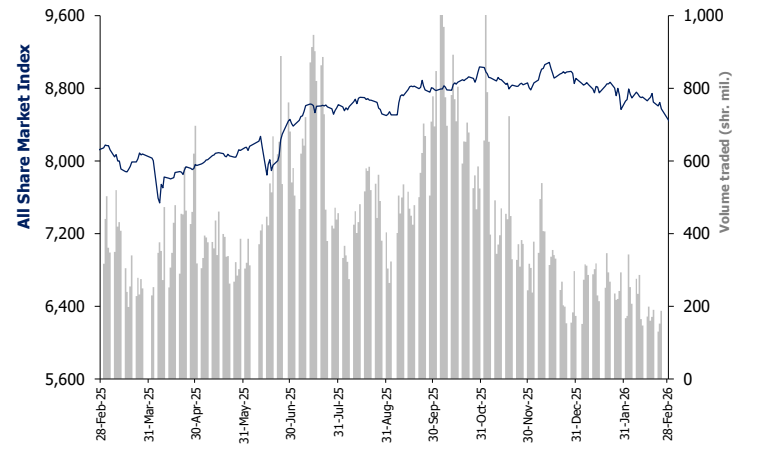
Source: Boursa Kuwait, Kamco Invest Research

Sector Returns

	Index Close	DTD % Chg	MTD % Chg	YTD % Chg
All Share Market Index	8,604.1	(0.1%)	0.4%	(3.4%)
Energy	1,840.7	(1.0%)	(1.8%)	6.1%
Basic Materials	760.8	2.4%	4.1%	(8.7%)
Industrials	728.6	(0.6%)	(0.3%)	(3.8%)
Consumer Staples	1,220.7	(1.1%)	(1.6%)	(10.2%)
Health Care	560.8	(1.8%)	0.8%	(5.1%)
Consumer Discretionary	2,250.3	(0.9%)	(4.8%)	(5.6%)
Telecommunications	1,326.3	(1.1%)	2.9%	8.2%
Banks	2,117.7	0.3%	0.9%	(2.4%)
Insurance	1,874.8	0.4%	1.9%	(3.8%)
Real Estate	1,876.5	0.1%	(0.1%)	(7.5%)
Financial Services	1,691.5	(0.8%)	(2.5%)	(11.9%)
Technology	843.9	(0.9%)	7.4%	(11.4%)
Utilities	381.6	(0.7%)	0.7%	(2.7%)

Market Breadth	43	60	37		
Benchmark Return	Closing Value	DTD Chg	DTD % Chg	MTD % Chg	YTD % Chg
Premier Market Index	9,178.47	(7.0)	(0.1%)	0.2%	(3.4%)
Main 50 Index	8,283.57	26.5	0.3%	(0.8%)	(4.7%)
Main Market Index	8,001.13	2.9	0.0%	1.0%	(3.6%)
All Share Market Index	8,604.12	(5.0)	(0.1%)	0.4%	(3.4%)
Market Cap (KWD Mn)	51,790.37	(17.0)	(0.0%)	0.4%	(3.3%)

Index Performance relative to Volume



Market Trading Data and Volatility

Trading Indicators	Today's Value	DTD Chg	DTD % Chg	Average Daily YTD 2026	YTD 2025
Volume (Shrs Mn)	149.7	(19.0)	(11.3%)	222.8	468.0
Value Traded (KWD Mn)	45.6	(10.4)	(18.6%)	67.7	128.0
No. of Trades	10,539	(5,266)	(33.3%)	16,652	20,001

Today's Most Active by Value	Close (KWD)	Percent Change	Value (KWD)
National Bank of Kuwait	0.943	0.2%	5,332,793
Kuwait Finance House	0.813	0.4%	5,100,130
National Industries Group	0.244	(5.4%)	3,780,091
Zain	0.554	(1.8%)	2,792,437
GFH Financial Group	0.175	(1.1%)	2,628,618

Saudi Tadawul Daily Report

March 15, 2026

Index Performance relative to Volume



Sector Returns

	Market Cap. (SAR Mn)	DTD % Chg	MTD % Chg	YTD % Chg
	9,675,150.5	0.5%	5.9%	9.7%
Energy	6,644,432.2	0.9%	8.5%	13.6%
Materials	646,963.4	(0.4%)	2.4%	10.3%
Capital Goods	69,475.4	0.7%	2.2%	1.5%
Commercial & Professional Svc	9,475.5	(0.6%)	(5.9%)	(11.0%)
Transportation	39,933.2	0.1%	(3.8%)	(11.9%)
Consumer Durables & Apparel	7,020.2	0.5%	(3.5%)	2.6%
Consumer Services	48,041.0	(1.7%)	(7.5%)	(10.5%)
Media	22,068.1	0.3%	(0.1%)	(18.9%)
Consumer Discretionary Distribution &	31,124.0	0.3%	(0.8%)	0.7%
Consumer Staples Distribution & Retail	33,741.0	(0.9%)	2.3%	1.1%
Food & Beverages	83,482.6	(1.1%)	4.4%	(3.7%)
Health Care Equipment & Svc	150,259.2	0.3%	6.0%	(4.3%)
Pharma, Biotech & Life Science	15,414.4	4.8%	3.4%	0.7%
Banks	1,032,323.2	(0.3%)	(0.6%)	5.4%
Financial Services	61,129.2	(0.5%)	0.9%	3.1%
Insurance	70,182.2	(0.4%)	0.1%	12.4%
Telecommunication Services	275,500.2	(0.1%)	1.3%	(1.0%)
Utilities	203,735.8	(0.7%)	2.0%	(6.1%)
REITs	14,496.4	0.1%	(0.8%)	1.3%
Real Estate Mgmt & Dev't	132,822.9	(0.4%)	(0.2%)	0.5%
Software & Services	83,077.3	(0.5%)	(10.2%)	(21.2%)

Sectors' MTD % Chg is based on the Change in market cap, and it might not conform with the benchmark % Chg for each sector

Top Movers and Most Active Stocks

Best Return Performers	Price (SAR)	Daily % Chg
Saudi Pharmaceutical Industrie	29.32	8.1%
Methanol Chemicals Co	8.59	7.4%
Al Hassan Ghazi Ibrahim Shaker	16.34	7.1%
Abdullah Saad Mohammed Abo Moa	42.50	7.1%
Equipment House	31.10	5.4%

Worst Return Performers	Price (SAR)	Daily % Chg
Modern Mills for Food Products Co	27.44	(5.4%)
Saudi Fisheries Co	40.38	(5.2%)
National Industrialization Co	8.40	(5.0%)
Saudi Arabian Amiantit Co	12.40	(4.8%)
Emaar Economic City	9.30	(4.3%)

Most Active Stocks By Volume	Price (SAR)	Volume ('000 Shrs)
Americana Restaurants International PLC	1.78	27,621
Saudi Arabian Oil Co	27.10	12,217
Alinma Bank	27.88	5,789
Rabigh Refining & Petrochemica	8.43	4,754
Saudi Chemical Co Holding	7.14	4,661

Trading Indicators

Market Return	Closing Value	DTD Chg	DTD % Chg	MTD % Chg	YTD-26 % Chg
Tadawul All Share Index	10,886.63	(6.64)	(0.1%)	1.7%	3.8%
Market Cap (SAR Mn)	9,675,150	48,999	0.5%	5.9%	9.7%

Trading Indicators	Today's Value	DTD Chg	DTD % Chg	Average Daily YTD-26	YTD-25
Volume (Mn Shares)	152.7	(82.5)	(35.1%)	241.3	296.1
Value Traded (SAR Mn)	2,992.2	(2,032.1)	(40.4%)	4,860.9	6,055.7
No. of Trades	297,165	(105,299)	(26.2%)	427,678	456,934

Market Breadth	▲ 108	▼ 147	▬ 21
----------------	-------	-------	------

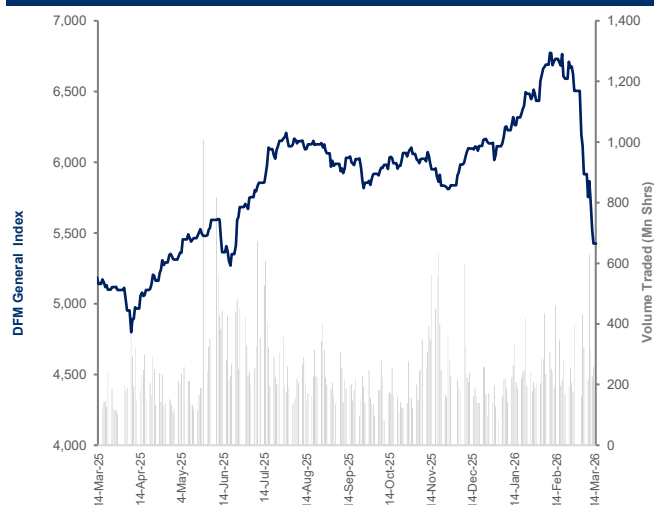
Most Active Stocks By Value	Price (SAR)	Daily % Chg	Value (SAR Mn)
Saudi Arabian Oil Co	27.10	0.9%	328.21
Alinma Bank	27.88	(1.9%)	160.86
Al Rajhi Bank	101.70	0.5%	156.47
Saudi Arabian Mining Co	69.50	0.8%	112.30
Saudi Telecom Co	42.44	0.3%	89.83

Source: Bloomberg, Kamco Invest Research

Dubai Financial Market Daily Report

March 13, 2026

Index Performance relative to Volume



Sector Returns

	Market Cap. (AED Mn)	DTD % Chg	MTD % Chg	YTD % Chg
Dubai Financial Market	877,794.9	(2.3%)	(16.8%)	(14.7%)
Financials	364,252.8	(2.6%)	(14.0%)	(19.8%)
Real Estate	176,324.3	(3.0%)	(29.2%)	(16.5%)
Industrial	102,069.1	(2.2%)	(16.0%)	(11.8%)
Materials	1,542.8	0.0%	2.4%	(4.9%)
Consumer Staples	27,880.9	(0.8%)	(9.6%)	(0.3%)
Consumer Discretionary	19,941.2	(0.4%)	(1.6%)	(24.1%)
Telecommunication	45,329.1	0.9%	(8.7%)	2.0%
Utilities	140,454.6	(2.4%)	(11.5%)	(4.8%)

Sectors' MTD % Chg is based on the Change in market cap, and it might not conform with the benchmark % Chg for each sector

Top Movers and Most Active Stocks

Best Return Performers	Price (AED)	Daily % Chg
Amlak Finance	1.45	6.6%
Int'L Financial Advisors Co.	5.70	4.6%
Dubai Taxi Company	2.33	4.5%
Shuaa Capital	0.20	3.6%
Ektitab Holding Company	0.40	2.8%

Worst Return Performers	Price (AED)	Daily % Chg
Emirates Nbd	26.95	(4.9%)
Ajman Bank Pjsc	1.35	(4.9%)
SALIK	5.28	(4.9%)
Gulf Navigation Holding Pjsc	1.99	(4.8%)
Emaar Development	13.30	(4.3%)

Most Active Stocks By Volume	Price (AED)	Volume ('000 Shrs)
Emaar Properties Pjsc	11.20	70,814
TALABAT Holding PLC	0.70	21,257
Drake & Scull International	0.22	13,139
SALIK	5.28	12,738
Emaar Development	13.30	12,143

Source: Bloomberg, Kamco Research

Trading Indicators

Market Return	Closing Value	DTD Chg	DTD % Chg	MTD % Chg	YTD-26 % Chg
DFM General Index	5,426.28	(91.80)	(1.7%)	(16.6%)	(10.3%)
Market Cap (AED Mn)	877,795	(20,853)	(2.3%)	(16.8%)	(14.7%)

Trading Indicators	Today's Value	DTD Chg	DTD % Chg	Average Daily YTD-26	Average Daily YTD-25
Volume (Mn Shares)	257.8	30.9	13.6%	254.4	234.2
Value Traded (AED Mn)	1,542.9	568.7	58.4%	952.3	685.3
No. of Trades	25,362	3,377	15.4%	16,533	14,217

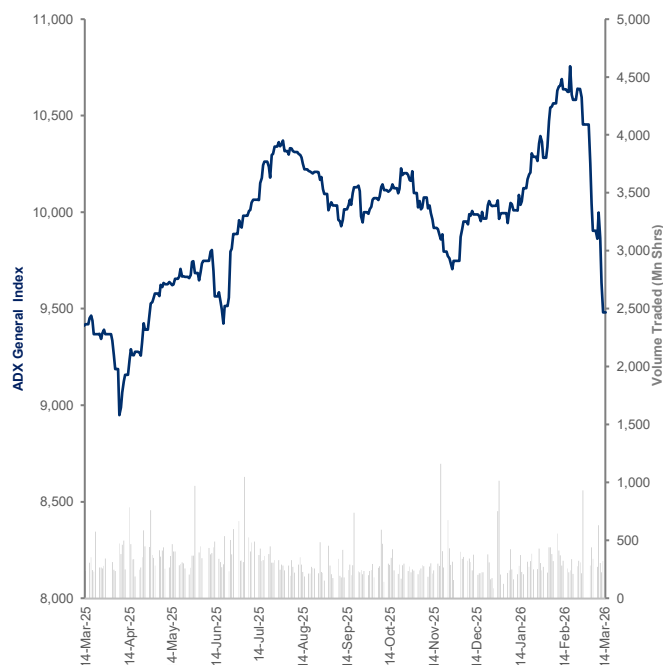
Market Breadth	▲	▼	▬
	12	31	33

Most Active Stocks By Value	Price (AED)	Daily % Chg	Value (AED Mn)
Emaar Properties Pjsc	11.20	(3.03%)	790.22
Emirates Nbd	26.95	(4.94%)	222.88
Emaar Development	13.30	(4.32%)	162.54
SALIK	5.28	(4.86%)	67.56
Dubai Islamic Bank	7.40	2.07%	60.43

Abu Dhabi Securities Exchange Daily Report

March 13, 2026

Index Performance relative to Volume



Sector Returns

	Market Cap. (AED Mn)	DTD % Chg	MTD % Chg	YTD % Chg
ADX	2,814,377.1	(1.2%)	(8.8%)	(8.8%)
Financials	1,476,905.6	(1.4%)	(6.8%)	(4.8%)
Telecommunication	204,520.1	(1.3%)	(7.9%)	1.7%
Consumer Discretionary	66,018.8	(0.1%)	(10.9%)	(4.9%)
Industrial	194,229.4	(2.3%)	(11.6%)	(0.8%)
Real Estate	63,074.9	(4.2%)	(30.8%)	(15.3%)
Basic Materials	100,534.9	1.0%	0.4%	0.8%
Energy	386,740.9	(1.8%)	(6.3%)	(8.9%)
Utilities	267,593.5	2.1%	(15.9%)	(29.4%)
Consumer Staples	21,522.1	1.1%	(6.2%)	(10.1%)
Health Care	33,236.9	(3.7%)	(12.8%)	(12.5%)

Sectors' MTD % Chg is based on the Change in market cap, and it might not conform with the benchmark % Chg for each sector

Top Movers and Most Active Stocks

Best Return Performers	Price (AED)	Daily % Chg
Abu Dhabi National Co. For Building Materials	1.28	5.8%
Phoenix Group	0.89	3.5%
Gulf Cement Co.	0.90	3.3%
Alef Education	0.98	3.1%
AGTHIA Group	3.67	2.8%

Worst Return Performers	Price (AED)	Daily % Chg
Abu Dhabi Islamic Bank	20.22	(5.0%)
National Bank Of Ras Al Khaimah	8.24	(5.0%)
Dana Gas Co.	0.79	(4.9%)
Rak Properties	0.95	(4.9%)
United Arab Bank Pjsc	1.37	(4.9%)

Most Active Stocks By Volume	Price (AED)	Volume ('000 Shrs)
Al Dar Properties Co.	7.42	73,447
Rak Properties	0.95	30,938
Dana Gas Co.	0.79	24,193
Fertiglobe	2.95	19,911
Two Point Zero Group	1.72	14,581

Trading Indicators

Market Return	Closing Value	DTD Chg	DTD % Chg	MTD % Chg	YTD-26 % Chg
FTSE ADX General Index	9,480.14	(155.43)	(1.6%)	(9.3%)	(5.1%)
Market Cap (AED Mn)	2,814,377	(33,266)	(1.2%)	(8.8%)	(8.8%)

Trading Indicators	Today's Value	DTD Chg	DTD % Chg	Average Daily YTD-26	Average Daily YTD-25
Volume (Mn Shares)	320.2	96.6	43.2%	319.4	342.9
Value Traded (AED Mn)	1,493.5	210.7	16.4%	1,424.1	1,275.3
No. of Trades	29,186	(362)	(1.2%)	24,001	20,959

Market Breadth	▲ 18	▼ 40	▬ 32
----------------	------	------	------

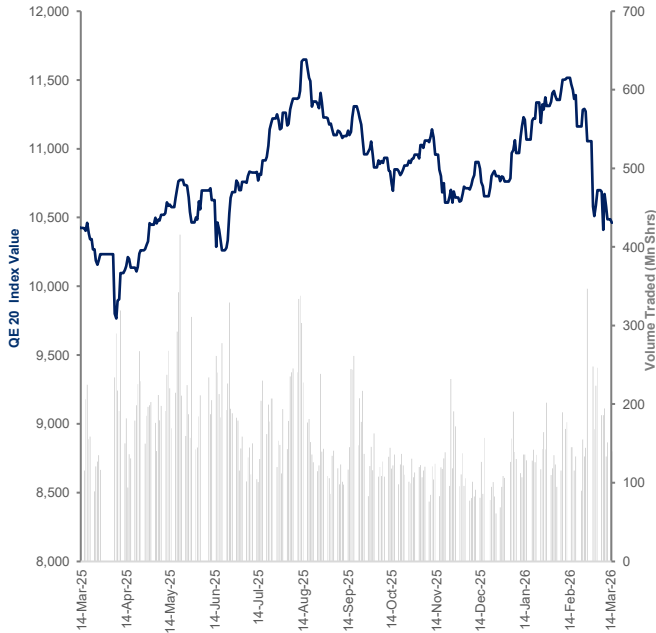
Most Active Stocks By Value	Price (AED)	Daily % Chg	Value (AED Mn)
Al Dar Properties Co.	7.42	(4.26%)	547.85
Abu Dhabi Commercial Bank	12.32	(4.64%)	140.63
First Abu Dhabi Bank Pjsc	16.80	(2.21%)	131.04
Alpha Dhabi Holding PJSC	7.93	(3.76%)	99.41
International Holdings Company PJSC	390.00	(0.64%)	70.95

Source: Bloomberg, Kamco Research

Qatar Exchange Daily Report

March 15, 2026

Index Performance relative to Volume



Sector Returns

	Market Cap. (QAR Mn)	DTD % Chg	MTD % Chg	YTD % Chg
Qatar Exchange	617,975.8	(0.4%)	(6.1%)	(4.1%)
Banking & Finance Sector	316,294.9	(0.9%)	(5.5%)	(2.6%)
Goods & Consumer Services	31,263.8	(0.8%)	(2.4%)	(3.7%)
Industrial Sector	134,963.8	1.3%	(6.3%)	(5.8%)
Insurance Sector	11,627.0	(3.3%)	(8.8%)	3.7%
Real Estate	34,703.3	(0.1%)	(10.0%)	(17.5%)
Telecom	51,409.8	(0.2%)	(5.9%)	(1.2%)
Transport	37,713.2	(1.8%)	(8.8%)	(1.8%)

Sectors' MTD % Chg is based on the Change in market cap. and it might not conform with the benchmark % Chg for each sector

Top Movers and Most Active Stocks

Best Return Performers	Price (QAR)	Daily % Chg
Qatar Cinema & Film Distributi	2.56	9.0%
Qatar Aluminum Manufacturing C	1.43	7.2%
Doha Bank QPSC	3.10	2.3%
Industries Qatar QSC	11.28	2.0%
Qatar Islamic Insurance Group	8.57	1.7%

Worst Return Performers	Price (QAR)	Daily % Chg
Qatar General Insurance & Rein	1.30	(6.1%)
Qatar Insurance Co SAQ	2.25	(4.3%)
QLMI Life and Medical Insurance	2.23	(3.9%)
Islamic Holding Group QSC	2.60	(3.2%)
Qatar Gas Transport Co Ltd	4.40	(2.3%)

Most Active Stocks By Volume	Price (QAR)	Volume ('000 Shrs)
Qatar Aluminum Manufacturing C	1.43	38,700
Masraf Al Rayan QSC	2.32	13,925
Barwa Real Estate Co	2.30	11,504
Baladna	1.19	11,122
Ezdan Holding Group QSC	0.83	9,611

Trading Indicators

Market Return	Closing Value	DTD Chg	DTD % Chg	MTD % Chg	YTD-26 % Chg
QE 20 Index	10,461.00	(24.94)	(0.2%)	(5.4%)	(2.8%)
Market Cap (QAR Mn)	617,976	(2,428)	(0.4%)	(6.1%)	(4.1%)

Trading Indicators	Today's Value	DTD Chg	DTD % Chg	Average Daily YTD-26	YTD-25
Volume ('Mn Shares)	140.0	(11.2)	(7.4%)	152.7	156.3
Value Traded (QAR Mn)	331.8	(70.9)	(17.6%)	455.2	418.5
No. of Trades	18,103	(3,116)	(14.7%)	28,749	14,238

Market Breadth	▲ 18	▼ 33	▬ 4
----------------	------	------	-----

Most Active Stocks By Value	Price (QAR)	Daily % Chg	Value (QAR Mn)
Qatar Aluminum Manufacturing C	1.43	7.22%	54.00
Masraf Al Rayan QSC	2.32	0.09%	32.54
Barwa Real Estate Co	2.30	0.44%	26.27
Qatar Fuel QSC	14.42	(1.44%)	19.56
Industries Qatar QSC	11.28	1.99%	18.80

Source: Bloomberg, Kamco Research

Bahrain Bourse Daily Report

March 15, 2026

Index Performance relative to Volume



Sector Returns

	Market Cap. (BHD Mn)	DTD % Chg	MTD % Chg	YTD % Chg
Bahrain Bourse	26,698.0	5.2%	(1.3%)	(0.2%)
Materials	1,292.2	0.6%	(17.1%)	(17.6%)
Industrial	125.3	0.0%	(2.2%)	(1.9%)
Consumer Discretionary	242.9	(1.7%)	(3.1%)	(2.6%)
Consumer Staples	137.5	0.0%	(1.6%)	5.2%
Financials	23,981.7	5.9%	(0.2%)	1.1%
Communication Services	836.1	(0.4%)	(3.4%)	(3.0%)
Real Estate	72.7	0.0%	(0.6%)	2.3%

Sectors' MTD % Chg is based on the Change in market cap. and it might not conform with the benchmark % Chg for each sector

Top Movers and Most Active Stocks

Best Return Performers	Price (BHD)	Daily % Chg
Kuwait Finance House - Bahrain	2.65	8.2%
Aluminium Bahrain B.S.C	0.91	0.6%

Worst Return Performers	Price (BHD)	Daily % Chg
Bahrain Duty Free Complex	0.40	(7.0%)
BBK BSC	0.50	(3.3%)
Al Salam Bank-Bahrain BSC	0.23	(0.9%)
Bahrain Telecommunications Co	0.47	(0.4%)

Most Active Stocks By Volume	Price (BHD)	Volume ('000 Shrs)
BBK BSC	0.50	120
Bahrain Duty Free Complex	0.40	100
Al Salam Bank-Bahrain BSC	0.23	98
Bahrain Islamic Bank BSC	0.08	70
Silah Gulf	0.18	40

Trading Indicators

Market Return	Closing Value	DTD Chg	DTD % Chg	MTD % Chg	YTD-26 % Chg
Bahrain All Share Index	1,938.72	(9.62)	(0.5%)	(5.9%)	(6.2%)
Market Cap (BHD Mn)	26,698.0	1,331.1	5.2%	(1.3%)	(0.2%)

Trading Indicators	Today's Value	DTD Chg	DTD % Chg	Average Daily YTD-26	Average Daily YTD-25
Volume ('000 Shares)	507	91	21.9%	2,349.1	9,300.6
Value Traded (BHD '000)	214	61	39.8%	1,094.1	8,287.7
No. of Trades	25	(3)	(10.7%)	56	40

Market Breadth	▲ 2	▼ 4	▬ 38
----------------	-----	-----	------

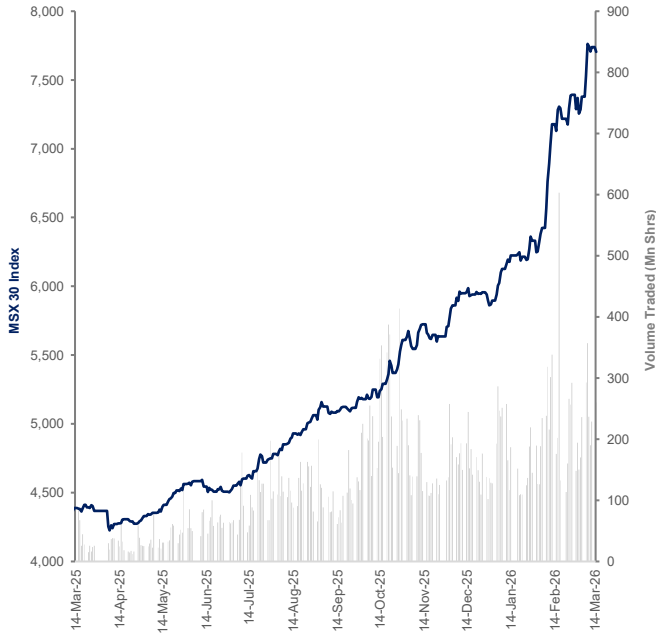
Most Active Stocks By Value	Price (BHD)	Daily % Chg	Value (BHD Mn)
BBK BSC	0.50	(3.28%)	0.06
Kuwait Finance House - Bahrain	2.65	8.16%	0.05
Bahrain Duty Free Complex	0.40	(6.98%)	0.04
Al Salam Bank-Bahrain BSC	0.23	(0.86%)	0.02
Bahrain Telecommunications Co	0.47	(0.43%)	0.01

Source: Bloomberg, Kamco Research

Muscat Stock Exchange Daily Report

March 15, 2026

Index Performance relative to Volume



Sector Returns

	Market Cap. (OMR Mn)	DTD % Chg	MTD % Chg	YTD % Chg
	20,535.7	(0.7%)	3.9%	29.4%
Financial	8,473.2	(0.7%)	3.5%	30.4%
Industrial	8,358.0	(1.0%)	5.9%	33.8%
Services	3704.6	(0.2%)	0.5%	18.7%

Sectors' MTD % Chg is based on the Change in market cap, and it might not conform with the benchmark % Chg for each sector

Top Movers and Most Active Stocks

Best Return Performers	Price (OMR)	Daily % Chg
Financial Services Co.	0.15	8.2%
Salalah Mills	0.68	6.5%
Oman Cement Co.	0.580	4.5%
Galfar Engineering & Contracting Co.	0.15	2.7%
OQ BASE INDUSTRIES (SFZ)	0.26	1.9%

Worst Return Performers	Price (OMR)	Daily % Chg
Al Batinah Development & Investment Holding Co.	0.07	(6.7%)
Acwa Power Barka	0.16	(6.1%)
Oman Fisheries Co.	0.03	(3.8%)
Raysut Cement Co.	0.14	(3.5%)
Dhofar Generating Company	0.08	(3.4%)

Most Active Stocks By Volume	Price (OMR)	Volume ('000 Shrs)
Ominvest	0.42	99,381
OQ Gas Networks	0.26	42,183
Sohar Bank	0.22	36,102
OQ BASE INDUSTRIES (SFZ)	0.26	30,767
Bank Muscat	0.48	16,655

Trading Indicators

Market Return	Closing Value	DTD Chg	DTD % Chg	MTD % Chg	YTD-26 % Chg
MSX 30 Index	7,704.67	(34.76)	(0.4%)	4.2%	31.3%
Market Cap (OMR Mn)	20,535.7	(151.38)	(0.7%)	3.9%	29.4%

Trading Indicators	Today's Value	DTD Chg	DTD % Chg	Average Daily YTD-26	Average Daily YTD-25
Volume ('000 Shares)	259,873.7	31,080.6	13.6%	210,097	34,743
Value Traded (OMR '000)	52,230.4	(21,028.2)	(28.7%)	55,275	3,259

Market Breadth	▲ 19	▼ 27	▬ 72
----------------	------	------	------

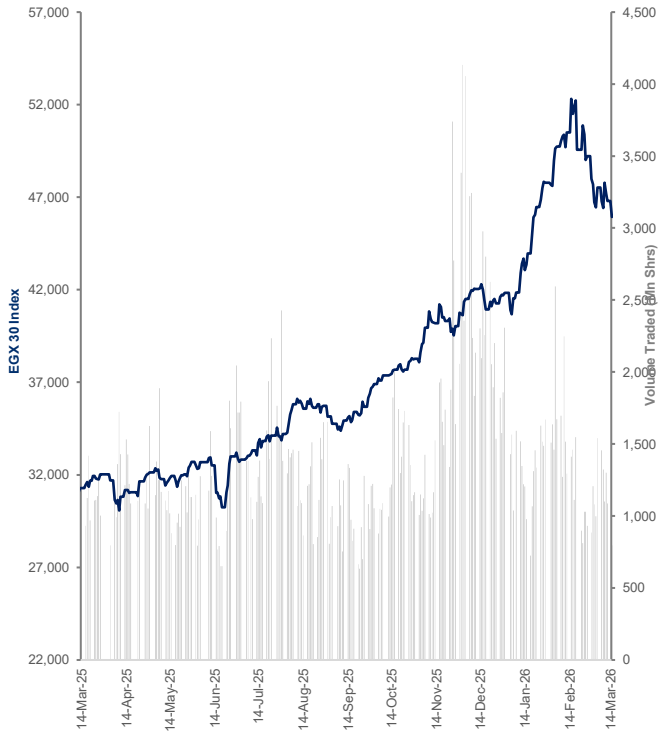
Most Active Stocks By Value	Price (OMR)	Daily % Chg	Value (OMR Mn)
OQ Gas Networks	0.26	0.39%	10.63
OQ BASE INDUSTRIES (SFZ)	0.26	1.93%	8.04
Bank Muscat	0.48	(0.63%)	7.88
Sohar Bank	0.22	(1.36%)	7.87
Oman Telecommunications Co.	1.31	0.08%	6.71

Source: Bloomberg, KAMCO Research

The Egyptian Exchange Daily Report

March 15, 2026

Index Performance relative to Volume



Sector Returns

	Market Cap. (EGP Mn)	DTD % Chg	MTD % Chg	YTD % Chg
Top 60 Stocks	2,918,982.9	(3.0%)	(2.3%)	7.1%
Banks	646,457.3	(8.8%)	(13.3%)	6.7%
Basic Resources	378,362.2	(0.6%)	16.5%	20.8%
Industrial Goods	180,855.8	(1.0%)	0.9%	(2.6%)
Health Care & Pharmaceuticals	95,850.2	(1.7%)	(1.4%)	(0.6%)
Real Estate	452,385.2	(1.6%)	0.1%	9.0%
Travel and Leisure	77,074.7	(0.3%)	7.2%	5.0%
Food, Beverages & Tobacco	251,571.9	(0.5%)	(4.3%)	0.2%
Energy and Support Services	23,882.0	0.3%	20.8%	16.0%
Trade and Distributors	27,778.9	(1.6%)	(4.8%)	(1.8%)
Shipping and Transport	105,832.8	1.0%	29.2%	24.2%
Education Services	46,498.5	(1.9%)	(2.2%)	(6.6%)
Contracting and Construction Eng	61,273.3	(2.0%)	(14.5%)	(5.5%)
Textiles and Durables	31,589.5	(1.3%)	1.4%	0.9%
Building Materials	75,330.4	(1.5%)	(4.7%)	(3.3%)
Media & Communication Services	290,231.2	(2.0%)	(9.0%)	13.0%
Paper and Packaging	2,229.9	1.2%	2.5%	(3.0%)
Non-bank Financial Services	171,779.3	(1.6%)	(0.8%)	1.5%

Sectors' MTD % Chg is based on the Change in market cap. and it might not conform with the benchmark % Chg for each sector

Top Movers and Most Active Stocks

Best Return Performers	Price (EGP)	Daily % Chg
Arab Valves Company	8.20	13.1%
Rakta Paper Manufacturing	22.64	5.0%
EI Wadi For International and Investement Development	1.60	4.6%
AJWA for Food Industries company Egypt	112.72	3.8%
EI Ahram Co. For Printing And Packing	12.64	3.5%

Worst Return Performers	Price (EGP)	Daily % Chg
Raya Holding For Financial Investments	5.23	(4.7%)
GMC GROUP FOR INDUSTRIAL COMMERCIAL & FINANCIAL INVE	1.64	(4.7%)
EI Obour Real Estate Investment	36.92	(4.6%)
Tenth Of Ramadan Pharmaceutical Industries&Diagnostic-Ramed	4.50	(4.5%)
Upper Egypt Flour Mills	457.96	(4.2%)

Most Active Stocks By Volume	Price (EGP)	Volume ('000 Shrs)
Arab Developers Holding	0.22	181,787
Citadel Capital - Common Shares	3.70	144,381
Orascom Investment Holding	1.22	47,247
Alexandria Mineral Oils Company	9.38	34,063
Belton Financial Holding	2.86	27,878

Trading Indicators

Market Return	Closing Value	DTD Chg	DTD % Chg	MTD % Chg	YTD-26 % Chg
EGX 30 Index	45,926.93	(864.0)	(1.8%)	(6.7%)	9.8%
Market Cap (EGP Mn)	2,918,982.9	(89,322.1)	(3.0%)	(2.3%)	7.1%

Trading Indicators	Today's Value	DTD Chg	DTD % Chg	Average Daily YTD-26	YTD-25
Volume (Mn Shares)	796.8	(290.2)	(26.7%)	1,333.0	1,370.4
Value Traded (EGP Mn)	4,317.0	(2,210.4)	(33.9%)	6,143.4	3,320.4
No. of Trades	117,848	(9,344)	(7.3%)	134,788	86,713

Market Breadth	▲ 32	▼ 133	▬ 56
----------------	------	-------	------

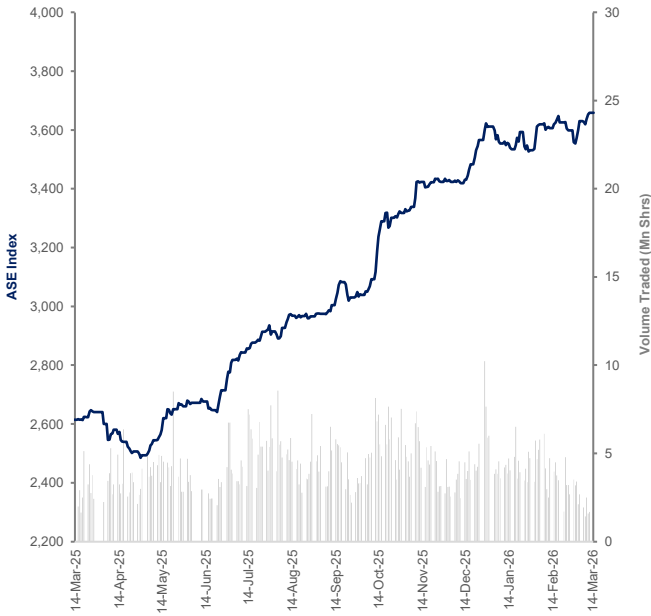
Most Active Stocks By Value	Price (EGP)	Daily % Chg	Value (EGP Mn)
Citadel Capital - Common Shares	3.70	0.27%	540.43
Alexandria Mineral Oils Company	9.38	2.85%	318.40
Abou Kir Fertilizers & Chemicals	86.00	(2.34%)	287.23
Commercial International Bank (Egypt)	118.80	(2.62%)	271.58
Egypt Aluminum	304.00	(1.62%)	202.71

Source: Bloomberg, Kamco Research

Amman Stock Exchange Daily Report

March 15, 2026

Index Performance relative to Volume



Sector Returns

	Market Cap. (JD Mn)	DTD % Chg	MTD % Chg	YTD % Chg
Amman Stock Exchange	26,743.4	(0.0%)	1.1%	3.3%
Banks	10,842.7	(0.3%)	2.0%	(0.3%)
Insurance	375.2	(0.2%)	2.7%	3.9%
Diversified Financial Services	268.7	0.2%	(2.1%)	(6.9%)
Real Estate	365.3	(0.5%)	(1.0%)	(8.0%)
Health Care Services	51.3	(1.5%)	(1.5%)	(8.2%)
Educational Services	363.9	1.0%	4.5%	6.2%
Hotels and Tourism	259.8	0.0%	(3.8%)	(5.0%)
Transportation	142.6	0.0%	(1.1%)	(6.5%)
Technology and Communication	651.0	0.6%	2.0%	9.8%
Utilities and Energy	1,394.3	0.1%	1.0%	6.8%
Commercial Services	285.6	(0.0%)	1.3%	(3.9%)
Pharmaceutical and Medical Industries	72.6	(0.9%)	0.1%	(0.3%)
Chemical Industries	78.1	(1.0%)	(0.1%)	19.3%
Food and Beverages	208.0	0.4%	0.8%	(0.3%)
Tobacco and Cigarettes	1.5	(9.1%)	11.1%	(44.4%)
Mining and Extraction Industries	11,205.0	0.3%	0.5%	7.7%
Engineering and Construction	96.5	(0.3%)	(1.3%)	(3.6%)
Electrical Industries	41.3	(4.8%)	(0.8%)	(7.1%)
Textiles Leathers and Clothings	40.1	1.5%	(0.4%)	(7.0%)

Sectors' MTD % Chg is based on the Change in market cap, and it might not conform with the benchmark % Chg for each sector

Top Movers and Most Active Stocks

Best Return Performers	Price (JD)	Daily % Chg
FUTURE ARAB INVESTMENT COMPANY	0.62	3.3%
AMAD INVESTMENT & REAL ESTATE DEVELOPMENT	2.26	2.3%
IHDATHIAT CO-ORDINATES	0.56	1.8%
FIRST FINANCE	0.59	1.7%
SABAEK INVEST COMPANY P.L.C	0.64	1.6%

Worst Return Performers	Price (JD)	Daily % Chg
INT'L ARABIAN DEVELOPMENT AND INVESTMENT TRADING CO.	0.21	(4.5%)
REAL ESTATE DEVELOPMENT	0.63	(3.1%)
AL MANARA ISLAMIC INSURANCE COMPANY	0.34	(2.9%)
JORDAN KUWAIT BANK	3.24	(1.8%)
DIMENSIONS:JORDAN AND EMIRATES COMMERCIAL INVESTMEN	0.58	(1.7%)

Most Active Stocks By Volume	Price (JD)	Volume (*000 Shrs)
JORDAN ISLAMIC BANK	4.84	244
ARAB BANK	6.84	171
FUTURE ARAB INVESTMENT COMPANY	0.62	63
CENTURY INVESTMENT GROUP	0.45	49
AL-TAJAMOuat FOR TOURISTIC PROJECTS CO PLC	0.70	39

Trading Indicators

Market Return	Closing Value	DTD Chg	DTD % Chg	MTD % Chg	YTD-26 % Chg
ASE Index	3,658.64	0.18	0.0%	1.7%	1.3%
Market Cap (JD Mn)	26,743.40	(0.39)	(0.0%)	1.1%	3.3%

Trading Indicators	Today's Value	DTD Chg	DTD % Chg	Average Daily YTD-26	Average Daily YTD-25
Volume (*000 Shares)	1,586.6	(92.0)	(5.5%)	3,745.2	3,020.2
Value Traded (JD *000)	6,140.9	1,110.8	22.1%	9,216.8	5,654.4
No. of Trades	1,790	152	9.3%	3,129	2,062

Market Breadth	▲ 22	▼ 27	▬ 112
----------------	------	------	-------

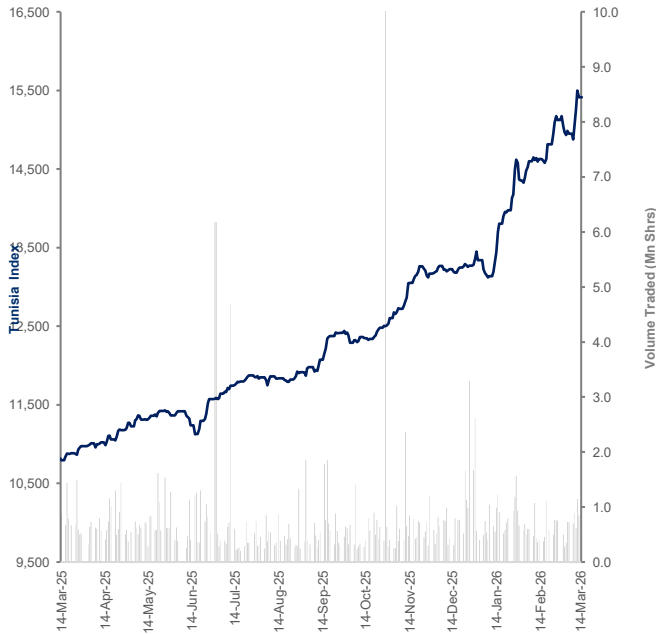
Most Active Stocks By Value	Price (JD)	Daily % Chg	Value (JD Mn)
JORDAN ISLAMIC BANK	4.84	0.41%	1.18
ARAB BANK	6.84	(0.58%)	1.17
BANK AL ETIHAD	2.79	0.00%	0.07
FUTURE ARAB INVESTMENT COMPANY	0.62	3.33%	0.04
AL-TAJAMOuat FOR TOURISTIC PROJECTS CO PLC	0.70	0.00%	0.03

Source: Bloomberg, Kamco Research

Tunisia Stock Exchange Daily Report

March 13, 2026

Index Performance relative to Volume



Sector Returns

	Market Cap. (DT Mn)	DTD % Chg	MTD % Chg	YTD % Chg
Tunisia Stock Exchange	36,427.8	(0.5%)	1.0%	15.6%
Banking	17,073.6	(0.9%)	3.4%	17.8%
Insurance	1,376.8	(1.0%)	(2.8%)	6.8%
Leasing	1,366.5	0.1%	(1.0%)	18.4%
Financial Services	4,311.1	(0.2%)	0.6%	29.5%
Industrial	2,921.7	(0.3%)	(1.7%)	8.4%
Chemical Industry	494.5	0.2%	0.1%	4.5%
Food & Beverage	5,268.1	0.2%	(1.1%)	9.9%
Retailing	2,026.9	(0.3%)	(1.4%)	21.1%
Others	1,588.7	(0.8%)	(1.9%)	(1.0%)

Sectors' MTD % Chg is based on the Change in market cap, and it might not conform with the benchmark % Chg for each sector

Top Movers and Most Active Stocks

Best Return Performers	Price (DT)	Daily % Chg
Banque de Tunisie	7.50	2.0%
Societe Industrielle d'Apparei	3.20	1.9%
Essoukna	3.77	1.9%
Banque de l'Habitat	10.19	1.5%
Tuninvest-SICAR	41.45	0.9%

Worst Return Performers	Price (DT)	Daily % Chg
Cie d'Assurances et de Reassur	45.41	(4.5%)
Unite de Fabrication de Medica	8.81	(3.7%)
Societe Tunisienne de Banque	4.12	(2.8%)
Banque Internationale Arabe de	142.30	(2.5%)
Societe Moderne de Ceramique	0.60	(1.6%)

Most Active Stocks By Volume	Price (DT)	Volume ('000 Shrs)
Unite de Fabrication de Medica	8.81	218
Societe Tunisienne de Banque	4.12	119
Arab Tunisian Bank	3.75	99
Banque de Tunisie	7.50	92
Societe D'Articles Hygieniques	14.00	51

Trading Indicators

Market Return	Closing Value	DTD Chg	DTD % Chg	MTD % Chg	YTD-26 % Chg
Tunisia Index	15,413.59	(85.55)	(0.6%)	1.9%	14.6%
Market Cap (DT Mln)	36,428	(199.94)	(0.5%)	1.0%	15.6%

Trading Indicators	Today's Value	DTD Chg	DTD % Chg	Average Daily YTD-26	YTD-25
Volume ('000 Shares)	848.2	(297.7)	(26.0%)	699.2	580.3
Value Traded ('000 DT)	8,370.8	(9,278.6)	(52.6%)	9,198.5	5,331.8
No. of Trades	2,376	(197)	(7.7%)	2,299	1,597

Market Breadth	▲ 17	▼ 19	▬ 28
----------------	------	------	------

Most Active Stocks By Value	Price (DT)	Daily % Chg	Value (DT Mn)
Unite de Fabrication de Medica	8.81	(3.72%)	1.93
Societe D'Articles Hygieniques	14.00	(0.43%)	0.72
Banque de Tunisie	7.50	2.04%	0.69
Societe Tunisienne d'Assurance	63.81	0.49%	0.67
Amen Bank	60.70	(0.96%)	0.61

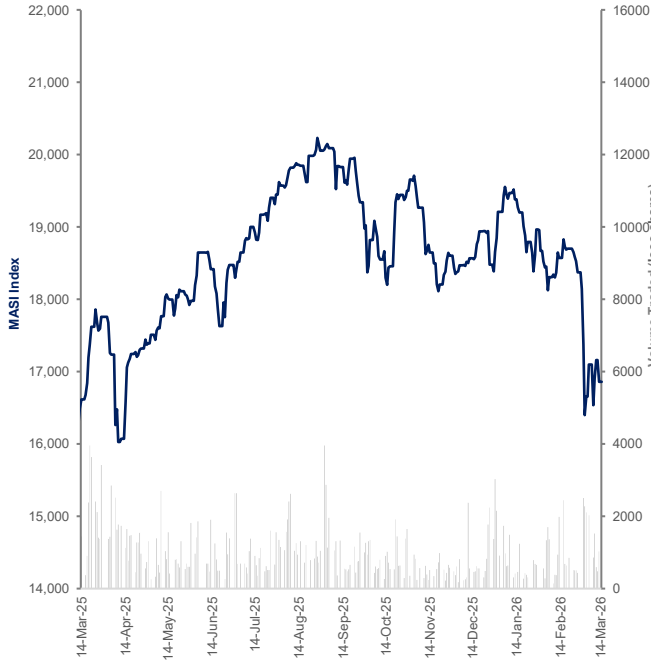
Source: Bloomberg, Kamco Research

Casablanca Stock Exchange Daily Report

(The Bulletin covers the 41 Stocks listed on the Main Market)

March 13, 2026

Index Performance relative to Volume



Sector Returns

	Market Cap. (MAD Mn)	DTD % Chg	MTD % Chg	YTD % Chg
Casablanca Stock Exchange	721,775.6	(1.6%)	(5.8%)	(6.2%)
Banking	273,326.2	(2.0%)	(6.9%)	(9.2%)
Beverages	7,969.1	(0.8%)	(1.7%)	(9.7%)
Chemicals	2,675.7	(2.1%)	(6.1%)	(6.8%)
Construction & Building Material	72,405.4	(1.1%)	1.4%	(7.8%)
Distributors	16,380.3	(3.3%)	(8.9%)	(18.9%)
Electricity	41,515.8	(5.3%)	(7.1%)	(17.0%)
Food Producers & Processors	28,148.6	2.2%	0.4%	(3.5%)
Holding Companies	4,975.7	1.1%	(12.6%)	(26.2%)
Insurance	33,504.1	(0.1%)	(5.5%)	(3.4%)
Investment & other Finance	3,565.4	(6.0%)	(12.8%)	(6.7%)
Leisures & Hotel	4,739.6	(1.8%)	(10.9%)	(10.6%)
Materials, Software & Computer	5,106.1	(4.9%)	(8.0%)	(11.6%)
Mining	111,153.6	(1.7%)	(6.1%)	29.7%
Oil & Gas	13,406.3	0.0%	(7.1%)	(3.5%)
Real Estate	20,266.3	(2.8%)	(9.0%)	(22.6%)
Telecommunications	81,536.1	(0.1%)	(6.3%)	(14.9%)
Transport	980.8	(2.9%)	(5.0%)	(11.6%)
Forestry & Paper	120.6	2.9%	(3.0%)	(5.0%)

Sectors' MTD % Chg is based on the Change in market cap, and it might not conform with the benchmark % Chg for each sector

Top Movers and Most Active Stocks

Best Return Performers	Price (MAD)	Daily % Chg
Lesieur Cristal	369.00	5.4%
Med Paper SA	25.20	2.9%
Saham Assurance	2175.00	1.2%
Delta Holding SA	56.80	1.1%
Societe Metallurgique D'imiter	6600.00	0.8%

Worst Return Performers	Price (MAD)	Daily % Chg
Disway	744.00	(9.8%)
Banque Marocaine Pour Le Comme	570.00	(6.6%)
Salafin	477.25	(6.0%)
Eqdom	1242.00	(6.0%)
Alliances Developpement Immobi	393.00	(5.4%)

Most Active Stocks By Volume	Price (MAD)	Volume (*000 Shrs)
Maroc Telecom	92.75	196.2
Attijariwafa Bank	680.00	172.8
Douja Promotion Groupe Addoha	28.79	141.7
Bank of Africa	204.00	125.1
Cosumar	190.00	117.6

Trading Indicators

Market Return	Closing Value	DTD Chg	DTD % Chg	MTD % Chg	YTD-26 % Chg
MASI Index	16,855.82	(301.94)	(1.8%)	(8.2%)	(10.6%)
Market Cap (MAD Mn)	721,776	(11,906)	(1.6%)	(5.8%)	(6.2%)

Trading Indicators	Today's Value	DTD Chg	DTD % Chg	Average Daily YTD-26	Average Daily YTD-25
Volume (*000 Shares)	1,027.9	553.3	116.6%	936.1	1,390.4
Value Traded (MAD Mn)	314.46	180.56	134.9%	237.5	265.9

Market Breadth	▲ 7	▼ 29	▬ 5
----------------	-----	------	-----

Most Active Stocks By Value	Price (MAD)	Daily % Chg	Value (MAD Mn)
Attijariwafa Bank	680.00	(3.00%)	104.63
Bank of Africa	204.00	(0.20%)	24.86
Cosumar	190.00	0.48%	21.05
Managem SA	8003.00	(1.80%)	20.13
LafargeHolcim Maroc SA	1745.00	(0.85%)	19.92

Source: Bloomberg, Kamco Research

Disclaimer & Important Disclosures

Kamco Invest is authorized and fully regulated by the Capital Markets Authority ("CMA, Kuwait") and partially regulated by the Central Bank of Kuwait ("CBK"). This document is provided for informational purposes only. Nothing contained in this document constitutes investment, an offer to invest, legal, tax or other advice or guidance and should be disregarded when considering or making investment decisions. In preparing this document, Kamco Invest did not take into account the investment objectives, financial situation and particular needs of any particular person. Accordingly, before acting on this document, investors should independently evaluate the investments and strategies referred to herein and make their own determination of whether it is appropriate in light of their own financial circumstances and objectives. The entire content of this document is subject to copyright with all rights reserved. This research and the information contained herein may not be reproduced, distributed or transmitted in Kuwait or in any other jurisdiction to any other person or incorporated in any way into another document or other material without our prior written consent.

Analyst Certification

Each of the analysts identified in this report, if any and where applicable, certifies, with respect to the sector, companies or securities that the individual analyses, that (1) the views expressed in this report reflect his or her personal views about all of the subject companies and securities and (2) no part of his or her compensation was, is or will be directly or indirectly dependent on the specific recommendations or views expressed in this report.

Kamco Invest Ratings

Kamco Invest research is based on the analysis of regional and country economics, industries and company fundamentals. Kamco Invest company research reflects a long-term (12-month) target price for a company or stock. The ratings bands are:

***Outperform:** Target Price represents expected returns $\geq 10\%$ in the next 12 months

***Neutral:** Target Price represents expected returns between -10% and $+10\%$ in the next 12 months

***Underperform:** Target Price represents an expected return of $\leq -10\%$ in the next 12 months

In certain circumstances, ratings may differ from those implied by a fair value target using the criteria above. Kamco Invest policy is to maintain up-to-date fair value targets on the companies under its coverage, reflecting any material changes to the analyst's outlook on a company. Share price volatility may cause a stock to move outside the rating range implied by Kamco Invest's fair value target. Analysts may not necessarily change their ratings if this happens, but are expected to disclose the rationale behind their view to Kamco Invest clients.

Any terms and conditions proposed by you which are in addition to or which conflict with this Disclaimer are expressly rejected by Kamco Invest and shall be of no force or effect. The information contained in this document is based on current trade, statistical and other public information we consider reliable. We do not represent or warrant that such information is fair, accurate or complete and it should not be relied upon as such. Kamco Invest has no obligation to update, modify or amend this document or to otherwise notify a recipient thereof in the event that any opinion, forecast or estimate set forth herein, changes or subsequently becomes inaccurate. The publication is provided for informational uses only and is not intended for trading purposes. The information on publications does not give rise to any legally binding obligation and/or agreement, including without limitation any obligation to update such information. You shall be responsible for conducting your own investigation and analysis of the information contained or referred to in this document and of evaluating the merits and risks involved in the securities forming the subject matter of this or other such document. Moreover, the provision of certain data/information in the publication may be subject to the terms and conditions of other agreements to which Kamco Invest is a party.

Nothing in this document should be construed as a solicitation or offer, or recommendation, to acquire or dispose of any investment or to engage in any other transaction, or to provide any investment advice or service. This document is directed at Professional Clients and not Retail Clients within the meaning of CMA rules. Any other persons in receipt of this document must not rely upon or otherwise act upon it. Entities and individuals into whose possession this document comes are required to inform themselves about, and observe such restrictions and should not rely upon or otherwise act upon this document where it is unlawful to make to such person such an offer or invitation or recommendation without compliance with any authorization, registration or other legal requirements.

'Kamco Investment Company (DIFC) Limited ("Kamco Invest DIFC"), Office 205, Level 2, Gate Village 1, Dubai International Financial Centre, a wholly owned subsidiary of Kamco Investment Company KSC (Public), is regulated by the Dubai Financial Services Authority (DFSA). Kamco Invest DIFC may only undertake the financial services activities that fall within the scope of its existing DFSA licence. The information in this document may be distributed by Kamco Invest DIFC on behalf of Kamco Investment Company KSC (Public). This document is intended for Professional Clients or Market Counterparties only as defined by the DFSA, and no other person should act upon it.

This document may not be distributed in Saudi Arabia except to such persons as are permitted under the Offers of Securities Regulations issued by the Capital Market Authority. The Capital Market Authority does not make any representation as to the accuracy or completeness of this document, and expressly disclaims any liability whatsoever for any loss arising from, or incurred in reliance upon, any part of this document. The recipients of this document hereby should conduct their own due diligence on the accuracy of the information relating to the contents of this document. If you do not understand the contents of this document you should consult an authorized financial advisor.

Risk Warnings

Any prices, valuations or forecasts are indicative and are not intended to predict actual results, which may differ substantially from those reflected. The value of an investment may go up as well as down. The value of and income from any investment may fluctuate from day to day as a result of changes in relevant economic markets (including, without limitation, foreseeable or unforeseeable changes in interest rates, foreign exchange rates, default rates, prepayment rates, political or financial conditions, etc.).

Past performance is not indicative of future results. Any opinions, estimates, valuations or projections (target prices and ratings in particular) are inherently imprecise and a matter of judgment. They are statements of opinion and not of fact, based on current expectations, estimates and projections, and rely on beliefs and assumptions. Actual outcomes and returns may differ materially from what is expressed or forecasted. There are no guarantees of future performance. Certain transactions, including those involving futures, options, and other derivatives, give rise to substantial risk and are not suitable for all investors. This document does not propose to identify or to suggest all of the risks (direct or indirect) which may be associated with the investments and strategies referred to herein.

Conflict of Interest

Kamco Invest and its affiliates provide full investment banking services, and they and their directors, officers and employees, may take positions which conflict with the views expressed in this document. Salespeople, traders, and other professionals of Kamco Invest may provide oral or written market commentary or trading strategies to our clients and our proprietary trading desks that reflect opinions that are contrary to the opinions expressed in this document. Our asset management area, our proprietary trading desks and investing businesses may make investment decisions that are inconsistent with the recommendations or views expressed in this document. Kamco Invest may have or seek investment banking or other business relationships for which it will receive compensation from the companies that are the subject of this document. Facts and views presented in this document have not been reviewed by, and may not reflect information known to, professionals in other Kamco Invest business areas, including investment banking personnel. United Gulf Bank, Bahrain owns majority of Kamco Invest's shareholding and this ownership may create, or may create the appearance of, conflicts of interest.

No Liability & Warranty

Kamco Invest makes neither implied nor expressed representations or warranties and, to the fullest extent permitted by applicable law, we hereby expressly disclaim any and all express, implied and statutory representations and warranties of any kind, including, without limitation, any warranty as to accuracy, timeliness, completeness, and fitness for a particular purpose and/or non-infringement. Kamco Invest will accept no liability in any event including (without limitation) your reliance on the information contained in this document, any negligence for any damages or loss of any kind, including (without limitation) direct, indirect, incidental, special or consequential damages, expenses or losses arising out of, or in connection with your use or inability to use this document, or in connection with any error, omission, defect, computer virus or system failure, or loss of any profit, goodwill or reputation, even if expressly advised of the possibility of such loss or damages, arising out of or in connection with your use of this document. We do not exclude our duties or liabilities under binding applicable law.



KAMCO Investment Company - K.S.C. (Public)

Al-Shaheed Tower, Khalid Bin Al-Waleed Street- Sharq

P.O. BOX : 28873, Safat 13149, State of Kuwait

Tel: (+965) 2233 6600 Fax: (+965) 2249 2395

Email : kamcoird@kamcoinvest.com

Website : www.kamcoinvest.com

Kamco Invest