

MENA Markets Daily Report

April 29, 2020

		Country	Benchmark		Index Value	DTD Change	YTD 2020	FY 2019
MENA Countries								
<div>In this Report...</div> <div><div>Kuwait</div><div>2</div></div> <div><div>Saudi Arabia</div><div>3</div></div> <div><div>UAE - Dubai</div><div>4</div></div> <div><div>UAE - Nasdaq Dubai</div><div>5</div></div> <div><div>UAE - Abu Dhabi</div><div>6</div></div> <div><div>Qatar</div><div>7</div></div> <div><div>Bahrain</div><div>8</div></div> <div><div>Oman</div><div>9</div></div> <div><div>Egypt</div><div>10</div></div> <div><div>Tunisia</div><div>11</div></div> <div><div>Lebanon</div><div>12</div></div> <div><div>Morocco</div><div>13</div></div>	Kuwait	Premier Market Index	▲	5,209.58	1.1%	(25.3%)	32.4%	
	Kuwait	Main 50 Index	▲	4,079.41	1.5%	NA	NA	
	Kuwait	Main Market Index	▲	4,134.41	1.5%	(15.8%)	3.6%	
	Kuwait	All Share Index	▲	4,847.01	1.2%	(22.8%)	23.7%	
	Saudi Arabia	TADAWUL All Share Index	▲	6,884.82	0.8%	(17.9%)	7.2%	
	UAE - Dubai	DFM General Index	▲	1,997.67	0.6%	(27.7%)	9.3%	
	UAE - Nasdaq Dubai	FTSE NASDAQ Dubai UAE 20 Index	▲	2,465.04	1.1%	(22.6%)	3.6%	
	UAE - Abu Dhabi	ADX General Index	▲	4,220.58	1.2%	(16.8%)	3.3%	
	Qatar	QE 20 Index	▲	8,600.51	0.8%	(17.5%)	1.2%	
	Bahrain	Bahrain All Share	▼	1,307.86	(0.1%)	(18.8%)	20.4%	
	Oman	MSM 30 Index	▲	3,538.74	0.4%	(11.1%)	(7.9%)	
	Egypt	EGX 30	▲	10,415.12	0.4%	(25.4%)	7.1%	
	Tunisia	ASE Index	=	1,668.18	0.0%	(8.1%)	(4.9%)	
	Lebanon	Blom Stock Index	=	600.38	0.0%	(23.6%)	(19.6%)	
Tunisia	Tunisia Index	▼	6,294.37	(0.9%)	(11.6%)	(2.1%)		
Morocco	MASI	▲	9,175.44	1.0%	(24.6%)	7.1%		
Syria	DSE Weighted Index	=	6,240.68	0.0%	6.9%	(5.7%)		
Emerging Markets								
China	SSE Composite Index	▼	2,810.02	(0.2%)	(7.9%)	22.3%		
Russia	RUSSIAN RTS INDEX (\$)	▲	1,083.68	0.2%	(30.0%)	44.9%		
India	SENSEX	▲	32,114.52	1.2%	(22.2%)	14.4%		
Brazil	BOVESPA Stock Index	▲	78,238.60	3.9%	(32.3%)	31.6%		
Mexico	BOLSA Index	▲	34,968.09	1.1%	(19.7%)	4.6%		
Korea	KOSPI Index	▲	1,934.09	0.6%	(12.0%)	7.7%		
Taiwan	TAIEX Index	▲	10,616.06	0.5%	(11.5%)	23.3%		
Global Markets								
World	MSCI World Index	▲	2,022.49	1.8%	(14.2%)	25.2%		
Asia	MSCI Asia Pacific	▲	144.48	2.0%	(15.3%)	16.3%		
Europe	DJ Stoxx 600	▲	335.44	1.8%	(19.3%)	23.2%		
Europe	FTSEurofirst 300	▲	1,315.86	1.8%	(19.0%)	22.0%		
Emerging Markets	MSCI EM Index	▲	895.33	1.8%	(19.7%)	15.4%		
U.S.A	S&P 500	▲	2,878.48	1.5%	(10.9%)	28.9%		
U.S.A	DJIA	▲	24,133.78	1.5%	(15.4%)	22.3%		
U.S.A	NASDAQ Composite	▲	8,730.16	1.1%	(2.7%)	35.2%		
UK	FTSE 100	▲	5,846.79	1.6%	(22.5%)	12.1%		
Germany	DAX	▲	10,659.99	3.1%	(19.5%)	25.5%		
Japan	NIKKEI 225	▼	19,771.19	(0.1%)	(16.4%)	18.2%		
Hong Kong	HANG SENG INDEX	▲	24,575.96	1.2%	(12.8%)	9.1%		
Commodities								
Oil	OPEC Crude	▼	13.30	(7.1%)	(80.4%)	31.8%		
Oil	Brent	▼	19.99	(6.8%)	(69.7%)	22.7%		
Oil	Kuwait	▼	14.99	(1.0%)	(77.7%)	26.7%		
Natural Gas	NYMEX Natural Gas (USD/MMBtu)	▲	1.82	4.2%	(16.9%)	(28.5%)		
Gold	Gold Spot \$/Oz	▼	1,713.99	(0.9%)	13.0%	18.3%		

Investment Strategy & Research
kamcoird@kamcoinvest.com

P.O.Box 28873,Safat 13149 Kuwait
Tel: (965) 2233 6600, Extn: 6982/6912
Fax: (965) 2249 2395

http://www.kamcoinvest.com

Kamco Investment Company - K.S.C
(Public)

Source: Bloomberg & Kamco Research. Note : Data as of last trading day.

Investment Strategy & Research
kamcoird@kamcoinvest.com

P.O.Box 28873,Safat 13149 Kuwait
Tel: (965) 2233 6600, Extn: 6982/6912
Fax: (965) 2249 2395

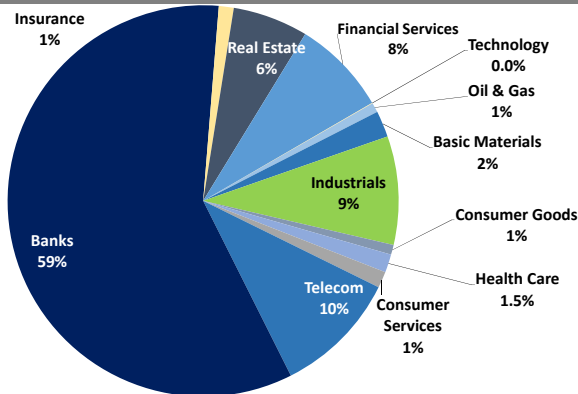
<http://www.kamcoinvest.com>

Kamco Investment Company - K.S.C
(Public)

Boursa Kuwait Daily Report

April 29, 2020

Sector Weight by Market Cap



Top 10 Companies by Market Capitalization

Company Name	Market Cap. (Mn KWD)	P/E (X)	ROE* (%)
1- National Bank of Kuwait	4,973.2	12.4	12.1%
2- Kuwait Finance House	4,573.8	18.4	12.5%
3- Zain	2,163.5	10.2	16.7%
4- Ahli United Bank - Bahrain	1,717.3	7.8	17.9%
5- Boubyan Bank	1,571.4	25.8	10.8%
6- Agility (PWC Logistics)	1,040.1	12.1	8.2%
7- Commercial Bank of Kuwait	996.0	15.3	9.1%
8- Mabanee Co.	638.0	11.5	12.1%
9- Gulf Bank	634.0	12.4	8.0%
10- Ahli United Bank - Kuwait	633.3	11.8	11.9%
Total	18,941	13.01	12.4%

*: ROE is calculated based on TTM 9M-2019 net profit & shareholders' equity as of 30-September-19

Top Movers and Most Active Stocks

Today's Top % Gainers	Close (KWD)	Change (KWD)	Percent Change
NOOR Financial Investment Co.	0.113	0.022	24.7%
Egypt Kuwait Holding Co.	0.437	0.038	9.5%
A'ayan Real Estate Co.	0.060	0.005	8.9%
Mashaer Holding Co.	0.058	0.005	8.9%
UniCap Investment and Finance	0.039	0.003	8.3%

Today's Top % Losers	Close (KWD)	Change (KWD)	Percent Change
Gulf Petroleum Investment	0.016	(0.002)	(11.9%)
Mubarrad Holding Co.	0.052	(0.004)	(7.0%)
National Petroleum Services Co.	1.140	(0.060)	(5.0%)
Manazel Holding Co.	0.025	(0.001)	(5.0%)
Gulf Investment House	0.043	(0.002)	(4.9%)

Today's Most Active by Volume	Close (KWD)	Percent Change	Volume (Shares)
Investors Holding Group Co.	0.010	(1.0%)	39,194,326
Ahli United Bank - Bahrain	0.194	(1.5%)	32,925,969
Gulf Petroleum Investment	0.016	(11.9%)	27,794,361
Kuwait International Bank	0.175	0.0%	20,581,396
Kuwait Finance House	0.596	1.4%	12,802,664

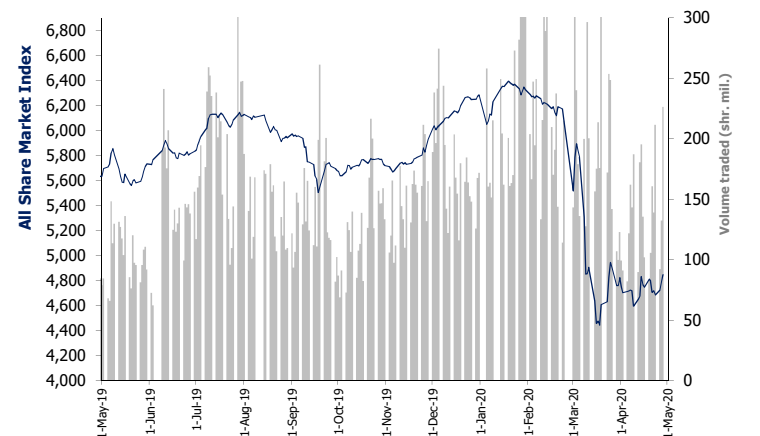
Source: Boursa Kuwait, Kamco Research

Market Capitalization - Sector Returns

	Market Cap. (KWD Mn)	DTD	DTD % Chg	MTD % Chg	YTD % Chg
Boursa Kuwait	28,029.9	▲	1.2%	1.0%	(22.9%)
Oil & Gas	224.9	▼	(3.0%)	(1.7%)	(12.8%)
Basic Materials	609.6	▲	0.2%	8.1%	(24.6%)
Industrials	2,518.4	▲	2.1%	3.4%	(23.5%)
Consumer Goods	225.8	▼	(0.8%)	16.1%	14.4%
Health Care	422.1	=	0.0%	0.0%	(3.8%)
Consumer Services	375.2	▲	0.5%	0.7%	(32.0%)
Telecommunications	2,887.8	▲	1.0%	(2.5%)	(15.5%)
Banks	16,457.3	▲	1.1%	1.2%	(25.2%)
Insurance	341.9	▼	(0.3%)	(1.9%)	(1.6%)
Real Estate	1,744.5	▲	1.3%	(2.4%)	(22.8%)
Financial Services	2,215.6	▲	2.8%	2.0%	(20.0%)
Technology	6.8	=	0.0%	12.1%	(3.4%)

Market Breadth	▲ 64	▼ 27	■ 83		
Benchmark Return	Closing	DTD	DTD	MTD	YTD
	Value	Chg	% Chg	% Chg	% Chg
Premier Market Index	5,209.58	55.0	1.1%	0.2%	(25.3%)
Main 50 Index	4,079.41	60.5	1.5%	2.0%	NA
Main Market Index	4,134.41	61.1	1.5%	1.3%	(15.8%)
All Share Market Index	4,847.01	56.9	1.2%	0.5%	(22.8%)
Market Cap (KWD Mn)	28,029.94	332.7	1.2%	1.0%	(22.9%)

Index Performance relative to Volume



Market Trading Data and Volatility

Trading Indicators	Today's Value	DTD Chg	DTD % Chg	Average Daily YTD 2020	YTD 2019
Volume (Shrs Mn)	226.1	93.9	71.0%	193.5	88.6
Value Traded (KWD Mn)	39.2	2.9	8.0%	40.1	16.9
No. of Trades	7,967	555	7.5%	9,184	3,810

Today's Most Active by Value	Close (KWD)	Percent Change	Value (KWD)
Kuwait Finance House	0.596	1.4%	7,659,349
Ahli United Bank - Bahrain	0.194	(1.5%)	6,448,375
National Bank of Kuwait	0.726	1.1%	4,945,432
Kuwait International Bank	0.175	0.0%	3,625,139
Agility (PWC Logistics)	0.590	4.4%	2,094,997

Saudi Tadawul Daily Report

April 29, 2020

Index Performance relative to Volume



Sector Returns

	Market Cap. (SAR Mn)	DTD % Chg	MTD % Chg	YTD % Chg
	7,764,239.6	(0.1%)	2.7%	(14.0%)
Energy	6,170,266.9	(0.3%)	1.9%	(13.0%)
Materials	424,749.7	0.3%	5.7%	(21.6%)
Capital Goods	10,666.7	1.0%	10.5%	(17.0%)
Commercial & Professional Svc	7,269.0	1.6%	6.7%	(21.1%)
Transportation	10,906.5	1.8%	11.6%	(21.6%)
Consumer Durables & Apparel	2,178.3	(0.1%)	3.0%	(24.2%)
Consumer Services	19,460.1	1.4%	8.9%	(15.0%)
Media	4,919.0	(1.4%)	(2.1%)	(24.1%)
Retailing	29,510.5	(1.3%)	15.0%	(12.4%)
Food & Staples Retailing	10,119.7	2.3%	7.0%	19.4%
Food & Beverages	81,190.5	(0.1%)	6.9%	2.6%
Health Care Equipment & Svc	40,429.2	(0.1%)	3.8%	85.7%
Pharma, Biotech & Life Science	3,192.0	0.6%	(1.7%)	(2.4%)
Banks	515,632.1	1.5%	5.4%	(25.3%)
Diversified Financials	27,168.6	3.5%	7.0%	(9.8%)
Insurance	36,977.7	0.8%	11.8%	(4.8%)
Telecommunication Services	208,598.2	0.5%	5.6%	(9.3%)
Utilities	72,465.9	0.8%	5.7%	(16.3%)
REITs	13,129.3	(0.2%)	(0.9%)	(11.4%)
Real Estate Mgmt & Dev't	74,205.4	1.5%	5.6%	(15.6%)
Software & Services	1,204.5	0.0%	27.4%	29.5%

Sectors' MTD % Chg is based on the Change in market cap. and it might not conform with the benchmark % Chg for each sector

Top Movers and Most Active Stocks

Best Return Performers	Price (SAR)	Daily % Chg
Electrical Industries Co	13.90	7.3%
Mediterranean & Gulf Insurance	18.16	6.7%
SABB Takaful Co	16.50	6.6%
Malath Cooperative Insurance C	9.66	6.5%
Middle East Paper Co	13.00	6.0%

Worst Return Performers	Price (SAR)	Daily % Chg
Amana Cooperative Insurance Co	11.16	(8.5%)
Saudi Enaya Cooperative Insura	18.98	(5.2%)
Raydan Food Co	14.30	(3.6%)
United Wire Factories Co	18.30	(3.6%)
Alujain Holding	26.60	(3.4%)

Most Active Stocks By Volume	Price (SAR)	Volume (*000 Shrs)
Seera Group Holding	15.50	23,813
Dar Al Arkan Real Estate Devel	8.06	13,752
Alinma Bank	15.40	12,545
Mobile Telecommunications Co S	12.02	8,589
Al Rajhi Bank	55.00	8,063

Trading Indicators

Market Return	Closing Value	DTD Chg	DTD % Chg	MTD % Chg	YTD-20 % Chg
Tadawul All Share Index	6,884.82	57.02	0.8%	5.8%	(17.9%)
Market Cap (SAR Mn)	7,764,240	(6,899)	(0.1%)	2.7%	(14.0%)

Trading Indicators	Today's Value	DTD Chg	DTD % Chg	Average Daily YTD-20	YTD-19
Volume (Mn Shares)	233.9	(34.9)	(13.0%)	238.7	121.7
Value Traded (SAR Mn)	4,610.4	(691.3)	(13.0%)	4,202.2	2,907.7
No. of Trades	217,908	(20,977)	(8.8%)	189,993	103,169

Market Breadth	▲ 126	▼ 50	= 24
----------------	-------	------	------

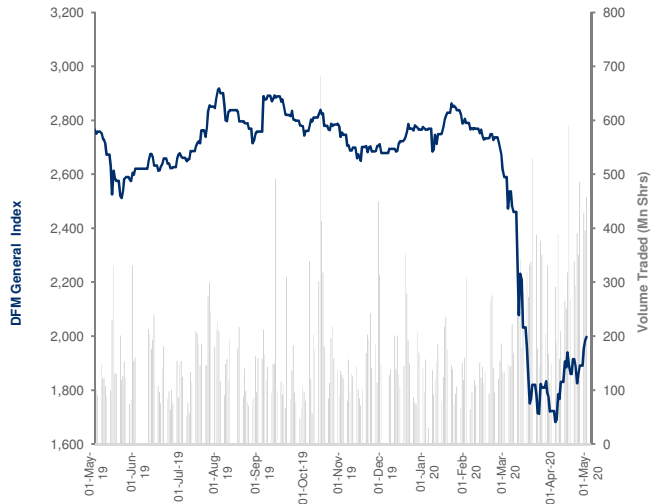
Most Active Stocks By Value	Price (SAR)	Daily % Chg	Value (SAR Mn)
Al Rajhi Bank	55.00	1.1%	440.63
Seera Group Holding	15.50	4.0%	363.00
Alinma Bank	15.40	0.4%	192.83
Saudi Telecom Co	90.00	0.0%	124.63
Saudi Basic Industries Corp	71.30	(0.1%)	119.09

Source: Bloomberg, Kamco Research

Dubai Financial Market Daily Report

April 29, 2020

Index Performance relative to Volume



Sector Returns

	Market Cap. (AED Mn)	DTD % Chg	MTD % Chg	YTD % Chg
Dubai Financial Market	285,039.4	0.3%	7.1%	(23.5%)
Banking	150,676.3	(0.1%)	3.1%	(26.7%)
Consumer Staples	3,318.0	0.5%	12.2%	0.2%
Investment & Financial Services	13,914.1	0.8%	17.4%	(18.5%)
Insurance	4,820.4	(1.2%)	2.8%	(4.9%)
Industrial	5,144.7	0.0%	0.1%	0.1%
Real Estate	52,989.6	1.8%	18.7%	(32.4%)
Telecommunication	24,581.0	(0.0%)	3.0%	(3.1%)
Transportation	21,699.8	(0.1%)	9.8%	(13.3%)
Services	7,895.5	(0.3%)	9.6%	2.7%

Sectors' MTD % Chg is based on the Change in market cap. and it might not conform with the benchmark % Chg for each sector

Top Movers and Most Active Stocks

Best Return Performers	Price (AED)	Daily % Chg
Al Salam Group Holding	0.27	6.7%
ITHMAAR HOLDING	0.14	6.7%
Ektitab Holding Company	0.16	6.7%
AL-MADING FOR FINANCE AND INVESTMENT	0.16	6.7%
Al Salam Bank - Bahrain	0.65	6.0%

Worst Return Performers	Price (AED)	Daily % Chg
OMAN INSURANCE CO PSC	2.00	(4.8%)
DUBAI ISLAMIC INSURANCE CO	0.36	(2.7%)
ISLAMIC ARAB INSURANCE COM	0.55	(1.8%)
EMAAR DEVELOPMENT	2.22	(1.3%)
Emirates NBD	8.17	(1.0%)

Most Active Stocks By Volume	Price (AED)	Volume (*'000 Shrs)
UNION PROPERTIES PJSC	0.31	95,491
Gulf Finance House	0.60	78,279
DXB ENTERTAINMENTS PJSC	0.16	43,782
DEYAAR DEVELOPMENT PJSC	0.29	41,185
EMAAR PROPERTIES PJSC	2.71	27,099

Trading Indicators

Market Return	Closing Value	DTD Chg	DTD % Chg	MTD % Chg	YTD-20 % Chg
DFM General Index	1,997.67	11.58	0.6%	12.8%	(27.7%)
Market Cap (AED Mn)	285,039	792	0.3%	7.1%	(23.5%)

Trading Indicators	Today's Value	DTD Chg	DTD % Chg	Average Daily YTD-20	YTD-19
Volume (Mn Shares)	458.3	62.4	15.8%	215.7	142.9
Value Traded (AED Mn)	367.5	5.0	1.4%	231.7	199.1
No. of Trades	7,362	458	6.6%	3,488	2,551

Market Breadth	▲ 21	▼ 10	= 31
----------------	------	------	------

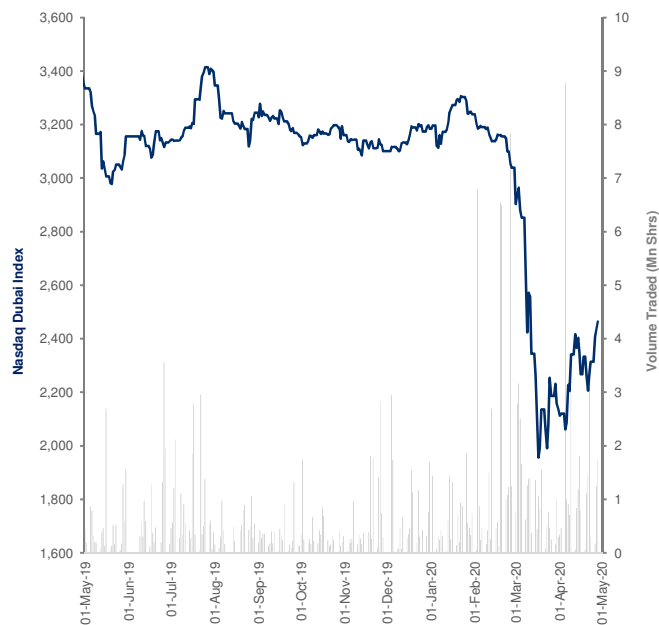
Most Active Stocks By Value	Price (AED)	Daily % Chg	Value (AED Mn)
EMAAR PROPERTIES PJSC	2.71	2.26%	72.83
Gulf Finance House	0.60	1.86%	46.99
DUBAI ISLAMIC BANK	3.62	0.56%	39.18
UNION PROPERTIES PJSC	0.31	2.28%	30.36
Emirates NBD	8.17	(0.97%)	29.72

Source: Bloomberg, Kamco Research

Nasdaq Dubai Daily Report

April 29, 2020

Index Performance relative to Volume



Sector Returns

	Market Cap. (USD Mn)	DTD % Chg	MTD % Chg	YTD % Chg
Nasdaq Dubai	38,906.6	0.0%	11.2%	6.4%
Al Baraka Banking Group	323.1	0.0%	(4.4%)	(16.1%)
BLME Holdings plc	117.4	0.0%	0.0%	0.0%
DEPA Limited (AED)	51.9	0.0%	1.3%	(3.1%)
DP World	13,213.6	0.1%	6.1%	21.5%
Emirates REIT (CEIC) Limited	63.2	(0.9%)	(18.2%)	(63.2%)
ENBD REIT (CEIC) Limited	88.0	0.0%	(2.8%)	(27.2%)
Hikma Pharmaceuticals GDR	7,049.4	0.0%	19.3%	9.5%
Nasdaq, Inc.	17,360.1	(0.0%)	13.4%	(1.9%)
Orascom Construction Limited	639.9	0.0%	(0.2%)	(10.2%)

Sectors' MTD % Chg is based on the Change in market cap. and it might not conform with the benchmark % Chg for each sector

Top Movers and Most Active Stocks

Best Return Performers	Price (USD)	Daily % Chg
DP World	15.92	0.1%

Worst Return Performers	Price (USD)	Daily % Chg
Emirates REIT (CEIC) Limited	0.21	(0.9%)

Most Active Stocks By Volume	Price (USD)	Volume ('000 Shrs)
DP World	15.92	1,723
Emirates REIT (CEIC) Limited	0.21	22

Trading Indicators

Market Return	Closing Value	DTD Chg	DTD % Chg	MTD % Chg	YTD-20 % Chg
FTSE Nasdaq Dubai UAE 20	2,465.04	27.04	1.1%	15.4%	(22.6%)
Market Cap (USD Mn)	38,907	16	0.0%	11.2%	6.4%

Trading Indicators	Today's Value	DTD Chg	DTD % Chg	Average Daily YTD-20	Average Daily YTD-19
Volume (Mn Shares)	1.74	0.5	40.4%	1.3	0.63
Value Traded (USD Mn)	27.41	8.4	44.4%	13.8	6.27
No. of Trades	103	48	87.3%	139	141

Market Breadth	▲ 1	▼ 1	= 7
----------------	-----	-----	-----

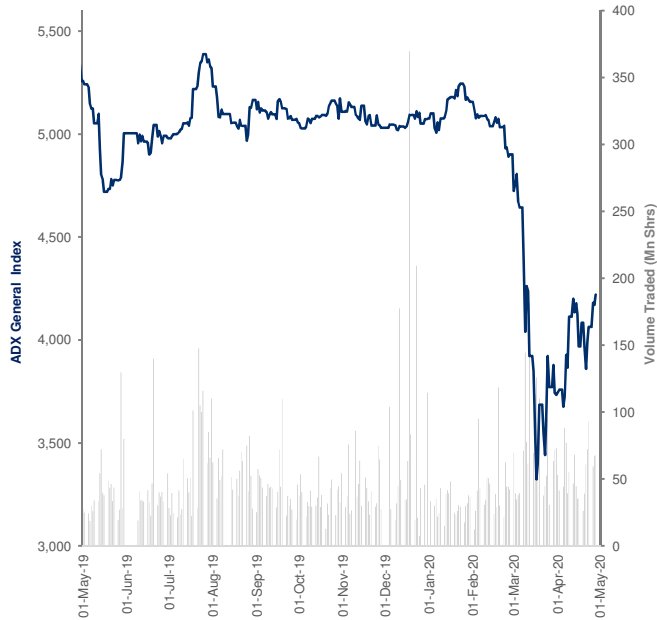
Most Active Stocks By Value	Price (USD)	Daily % Chg	Value (USD Mn)
DP World	15.92	0.13%	27.40
Emirates REIT (CEIC) Limited	0.21	(0.94%)	0.00

Source: Bloomberg, Kamco Research

Abu Dhabi Securities Exchange Daily Report

April 29, 2020

Index Performance relative to Volume



Sector Returns

	Market Cap. (AED Mn)	DTD % Chg	MTD % Chg	YTD % Chg
ADX	491,322.3	1.0%	14.1%	(9.6%)
Banks	197,313.8	0.7%	8.7%	(27.8%)
Investment & Financial Services	1,581.0	6.1%	(3.2%)	(20.7%)
Real Estate	15,697.1	4.4%	17.4%	(15.9%)
Energy	44,869.8	0.5%	8.6%	(4.3%)
Consumer Staples	54,685.2	2.5%	92.3%	287.5%
Industrial	5,869.7	1.7%	3.9%	(12.2%)
Insurance	8,370.3	(0.2%)	(4.1%)	6.2%
Telecommunication	154,942.2	0.7%	9.3%	(6.2%)
Services	7,993.3	(0.0%)	(1.8%)	(11.0%)

Sectors' MTD % Chg is based on the Change in market cap. and it might not conform with the benchmark % Chg for each sector

Top Movers and Most Active Stocks

Best Return Performers	Price (AED)	Daily % Chg
ABU DHABI SHIP BUILDING CO	2.50	13.6%
BANK OF SHARJAH	0.65	8.2%
WAHA CAPITAL PJSC	0.79	6.3%
ALDAR PROPERTIES PJSC	1.81	4.6%
ESHRAQ PROPERTIES CO PJSC	0.29	3.2%

Worst Return Performers	Price (AED)	Daily % Chg
UNION INSURANCE CO	0.57	(5.0%)
METHAQ TAKAFUL INSURANCE	0.58	(4.9%)
RAS AL KHAIMAH WHITE CEMENT	0.66	(4.3%)
ABU DHABI COMMERCIAL BANK	4.48	(2.4%)
Agthia Group	3.00	(2.3%)

Most Active Stocks By Volume	Price (AED)	Volume (*000 Shrs)
ALDAR PROPERTIES PJSC	1.81	20,115
ESHRAQ PROPERTIES CO PJSC	0.29	10,207
ABU DHABI COMMERCIAL BANK	4.48	7,451
DANA GAS	0.79	7,160
ABU DHABI ISLAMIC BANK	3.52	5,847

Trading Indicators

Market Return	Closing Value	DTD Chg	DTD % Chg	MTD % Chg	YTD-20 % Chg
ADX General Index	4,220.58	50.50	1.2%	13.0%	(16.8%)
Market Cap (AED Mn)	491,322	4,867	1.0%	14.1%	(9.6%)

Trading Indicators	Today's Value	DTD Chg	DTD % Chg	Average Daily YTD-20	YTD-19
Volume (Mn Shares)	68.1	0.9	1.4%	52.2	49.8
Value Traded (AED Mn)	175.5	18.8	12.0%	152.4	184.2
No. of Trades	3,324	969	41.1%	1,781	1,516

Market Breadth	▲ 16	▼ 5	= 43
----------------	------	-----	------

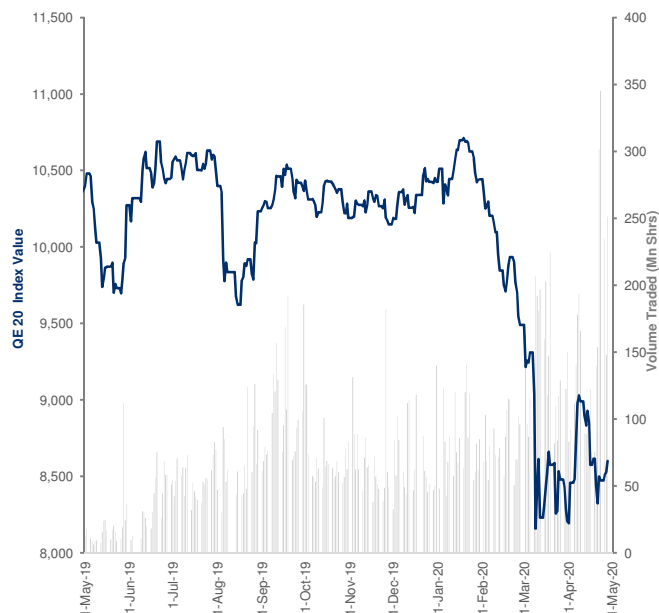
Most Active Stocks By Value	Price (AED)	Daily % Chg	Value (AED Mn)
ALDAR PROPERTIES PJSC	1.81	4.62%	35.31
ABU DHABI COMMERCIAL BANK	4.48	(2.40%)	33.42
FIRST ABU DHABI BANK PJSC	11.38	1.61%	27.99
EMIRATES TELECOM GROUP CO	15.60	0.78%	24.72
ABU DHABI ISLAMIC BANK	3.52	0.86%	20.53

Source: Bloomberg, Kamco Research

Qatar Exchange Daily Report

April 29, 2020

Index Performance relative to Volume



Sector Returns

	Market Cap. (QAR Mn)	DTD % Chg	MTD % Chg	YTD % Chg
Qatar Exchange	483,580.5	0.9%	5.0%	(17.0%)
Banking & Finance Sector	269,861.1	0.5%	2.7%	(13.5%)
Goods & Consumer Services	28,290.3	0.9%	3.9%	(20.1%)
Industrial Sector	94,719.2	0.4%	7.0%	(29.1%)
Insurance Sector	10,301.8	(0.4%)	0.2%	(29.4%)
Real Estate	32,676.4	6.0%	9.9%	(10.0%)
Telecom	24,745.3	(0.8%)	10.2%	(10.3%)
Transport	22,986.3	3.6%	17.3%	(1.9%)

Sectors' MTD % Chg is based on the Change in market cap. and it might not conform with the benchmark % Chg for each sector

Top Movers and Most Active Stocks

Best Return Performers	Price (QAR)	Daily % Chg
Ezdan Holding Group QSC	0.67	10.0%
Qatar German Co for Medical De	0.78	9.9%
Qatar Oman Investment Co QSC	0.53	8.2%
Qatar First Bank	0.99	8.1%
Dlala Brokerage & Investments	0.63	6.5%

Worst Return Performers	Price (QAR)	Daily % Chg
Qatar Cinema & Film Distributi	2.31	(8.7%)
Mannai Corp QSC	2.75	(4.1%)
Al Khaleej Takaful Group QSC	1.78	(2.0%)
Vodafone Qatar QSC	1.08	(1.1%)
National Leasing	0.63	(1.1%)

Most Active Stocks By Volume	Price (QAR)	Volume ('000 Shrs)
Ezdan Holding Group QSC	0.67	119,813
Qatar Gas Transport Co Ltd	2.50	18,698
Baladna	1.03	11,498
United Development Co QSC	1.00	8,217
Mazaya Qatar Real Estate Devel	0.59	7,756

Trading Indicators

Market Return	Closing Value	DTD Chg	DTD % Chg	MTD % Chg	YTD-20 % Chg
QE 20 Index	8,600.51	69.25	0.8%	4.8%	(17.5%)
Market Cap (QAR Mn)	483,581	4,412	0.9%	5.0%	(17.0%)

Trading Indicators	Today's Value	DTD Chg	DTD % Chg	Average Daily YTD-20	YTD-19
Volume ('Mn Shares)	251.2	103.2	69.7%	115.4	10.8
Value Traded (QAR Mn)	396.1	108.1	37.5%	278.8	282.4
No. of Trades	11,087	1,728	18.5%	7,268	5,866

Market Breadth	▲ 35	▼ 9	= 3
----------------	------	-----	-----

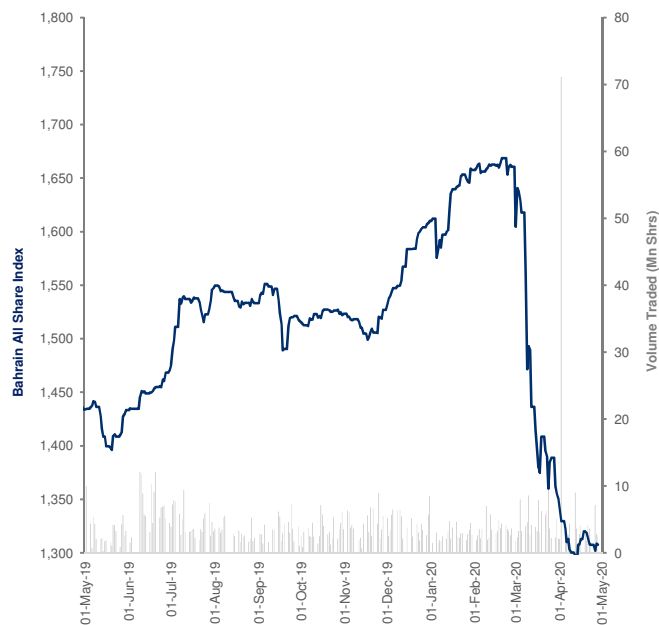
Most Active Stocks By Value	Price (QAR)	Daily % Chg	Value (QAR Mn)
Ezdan Holding Group QSC	0.67	9.98%	78.28
Qatar National Bank QPSC	17.10	0.29%	51.62
Qatar Gas Transport Co Ltd	2.50	4.17%	46.32
Al Meera Consumer Goods Co QSC	17.50	1.16%	32.68
Masraf Al Rayan QSC	3.80	1.20%	16.70

Source: Bloomberg, Kamco Research

Bahrain Bourse Daily Report

April 29, 2020

Index Performance relative to Volume



Sector Returns

	Market Cap. (BHD Mn)	DTD % Chg	MTD % Chg	YTD % Chg
Bahrain Bourse	8,251.6	(0.1%)	(3.3%)	(18.6%)
Commercial Banks	4,303.8	0.1%	(3.5%)	(23.9%)
Investment	1,995.9	0.3%	(3.6%)	(14.4%)
Insurance	144.7	0.0%	(3.0%)	2.5%
Services	1,176.9	(0.2%)	0.3%	(6.6%)
Hotel & Tourism	139.0	0.0%	0.0%	(0.2%)
Industrial	491.4	(2.8%)	(8.9%)	(19.4%)

Sectors' MTD % Chg is based on the Change in market cap. and it might not conform with the benchmark % Chg for each sector

Top Movers and Most Active Stocks

Best Return Performers	Price (BHD)	Daily % Chg
Al Salam Bank-Bahrain BSC	0.07	4.7%
GFH FINANCIAL GROUP BSC	0.16	2.6%
Arab Banking Corp BSC	0.32	0.3%

Trading Indicators

Market Return	Closing Value	DTD Chg	DTD % Chg	MTD % Chg	YTD-20 % Chg
Bahrain All Share Index	1,307.86	(0.92)	(0.1%)	(3.2%)	(18.8%)
Market Cap (BHD Mn)	8,252	(6)	(0.1%)	(3.3%)	(18.6%)

Worst Return Performers	Price (BHD)	Daily % Chg
Aluminium Bahrain BSC	0.34	(2.9%)
Seef Properties BSC	0.17	(2.2%)
National Bank of Bahrain BSC	0.62	(0.3%)

Trading Indicators	Today's Value	DTD Chg	DTD % Chg	Average Daily YTD-20	YTD-19
Volume ('000 Shares)	2,663.5	(108.2)	(3.9%)	4,405.6	5,773.7
Value Traded (BHD '000)	456.3	102.01	28.8%	916.9	1,454.8
No. of Trades	40	0	0.0%	63	95

Market Breadth	▲ 3	▼ 3	= 37
----------------	-----	-----	------

Most Active Stocks By Volume	Price (BHD)	Volume ('000 Shrs)
GFH FINANCIAL GROUP BSC	0.16	1,390
Ahli United Bank BSC	0.63	376
Al Salam Bank-Bahrain BSC	0.07	264
National Bank of Bahrain BSC	0.62	215
BBK BSC	0.52	160

Most Active Stocks By Value	Price (BHD)	Daily % Chg	Value (BHD Mn)
National Bank of Bahrain BSC	0.00	0.00%	0.13
Ahli United Bank BSC	0.63	0.00%	0.09
GFH FINANCIAL GROUP BSC	0.16	2.58%	0.08
BBK BSC	0.52	0.00%	0.08
Bahrain Telecommunications Co	0.38	0.00%	0.02

Source: Bloomberg, Kamco Research

Muscat Securities Market Daily Report

April 29, 2020

Index Performance relative to Volume



Sector Returns

	Market Cap. (OMR Mn)	DTD % Chg	MTD % Chg	YTD % Chg
Muscat Securities Market	5,870.6	0.4%	1.7%	(10.8%)
Financial	3,031.5	0.8%	1.7%	(14.6%)
Industrial	669.2	0.8%	1.3%	(3.5%)
Services	2170.0	(0.2%)	1.9%	(7.3%)

Sectors' MTD % Chg is based on the Change in market cap. and it might not conform with the benchmark % Chg for each sector

Top Movers and Most Active Stocks

Best Return Performers	Price (OMR)	Daily % Chg
Gulf International Chemicals Co.	0.11	6.1%
Oman Investment & Finance Co.	0.08	5.0%
Al Anwar Ceramic Tiles Co.	0.14	4.5%
Al Jazeera Steel Products Co.	0.10	4.3%
Oman Flour Mills	0.62	4.0%

Worst Return Performers	Price (OMR)	Daily % Chg
Oman Oil Marketing Co.	0.72	(10.0%)
United Finance Co.	0.07	(7.7%)
Sohar Power	0.05	(7.7%)
Voltamp Energy Co.	0.15	(4.0%)
SMN POWER HOLDING	0.06	(3.1%)

Most Active Stocks By Volume	Price (OMR)	Volume ('000 Shrs)
Oman Investment & Finance Co.	0.08	3,029
Sohar Bank	0.08	1,298
National Bank Of Oman	0.16	976
Phoenix Power Co.	0.05	813
AL MADINA INVESTMENT H olding Co.	0.02	621

Trading Indicators

Market Return	Closing Value	DTD Chg	DTD % Chg	MTD % Chg	YTD-20 % Chg
MSM 30 Index	3,538.74	14.22	0.4%	2.6%	(11.1%)
Market Cap (OMR Mn)	5,870.6	24.9	0.4%	1.7%	(10.8%)

Trading Indicators	Today's Value	DTD Chg	DTD % Chg	Average Daily YTD-2020	YTD-19
Volume ('000 Shares)	11,397.6	1,620.6	16.6%	12,176.8	15,241.4
Value Traded (OMR '000)	1,645.9	98.8	6.4%	2,533.6	2,443.5
No. of Trades	853	352	70.3%	522	484

Market Breadth	▲ 17	▼ 9	= 86
----------------	------	-----	------

Most Active Stocks By Value	Price (OMR)	Daily % Chg	Value (OMR Mn)
Oman Investment & Finance Co.	0.08	5.00%	0.26
Oman Flour Mills	0.62	4.03%	0.23
Bank Muscat	0.32	1.90%	0.20
National Bank Of Oman	0.16	0.00%	0.16
Oman Qatari Telecommunications Co.	0.40	0.50%	0.15

Source: Bloomberg, KAMCO Research

The Egyptian Exchange Daily Report

(The report covers the top 60 companies by market cap on the exchange)

April 29, 2020

Index Performance relative to Volume



Sector Returns

	Market Cap. (EGP Mn)	DTD % Chg	MTD % Chg	YTD % Chg
Top 60 Stocks	438,040.3	0.5%	7.0%	(21.9%)
Banks	147,298.1	(0.8%)	1.2%	(23.3%)
Basic Resources	15,682.2	2.3%	6.9%	(28.2%)
Chemicals	24,886.4	1.7%	5.4%	(22.1%)
Construction and Materials	14,952.1	2.6%	10.3%	(21.3%)
Financial Services excluding Banks	37,356.6	1.5%	14.7%	(27.3%)
Food and Beverage	8,361.9	1.2%	21.5%	(15.7%)
Healthcare	4,865.3	(2.3%)	(13.2%)	(26.2%)
Industrial Goods, Services, Automobile:	36,814.3	(2.0%)	16.3%	(27.4%)
Media	686.5	3.4%	16.0%	(15.6%)
Oil and Gas	3,112.5	1.7%	11.6%	(33.6%)
Personal and Household Products	32,313.3	0.3%	(0.5%)	(21.6%)
Real Estate	45,029.3	2.1%	13.1%	(24.5%)
Telecommunication	45,808.3	2.1%	13.5%	(0.4%)
Travel & Leisure	20,873.5	1.4%	9.1%	(17.5%)

Sectors' MTD % Chg is based on the Change in market cap. and it might not conform with the benchmark % Chg for each sector

Top Movers and Most Active Stocks

Best Return Performers	Price (EGP)	Daily % Chg
Orascom Development Egypt	3.62	6.5%
Misr Cement Co	6.41	6.3%
Egyptian Iron & Steel Co	1.50	5.6%
Telecom Egypt Co	10.61	5.4%
Maridive & Oil Services SAE	0.17	5.0%

Worst Return Performers	Price (EGP)	Daily % Chg
Credit Agricole Egypt SAE	27.87	(10.2%)
ElSewedy Electric Co	9.09	(5.0%)
Egyptian Int'l Pharmaceutical Industries	49.06	(2.3%)
Amer Group Holding	0.61	(1.1%)
Six of October Dev. & Inv.	10.16	(1.0%)

Most Active Stocks By Volume	Price (EGP)	Volume (*000 Shrs)
Palm Hills Developments SAE	1.31	27,720
Qalaa Holdings SAE	1.42	19,766
Ghabbour Auto	1.91	8,487
Medinet Nasr Housing	3.17	8,343
ElSewedy Electric Co	9.09	8,295

Trading Indicators

Market Return	Closing Value	DTD Chg	DTD % Chg	MTD % Chg	YTD-20 % Chg
EGX 30 Index	10,415.12	39.12	0.4%	8.6%	(25.4%)
Market Cap (EGP Mn)	438,040	1,992	0.5%	7.0%	(21.9%)

Trading Indicators	Today's Value	DTD Chg	DTD % Chg	Average Daily YTD-20	YTD-19
Volume (Mn Shares)	155.9	(20.8)	(11.8%)	91.0	100.8
Value Traded (EGP Mn)	816.1	100.2	14.0%	521.2	657.9
No. of Trades	21,221	(326)	(1.5%)	14,021	15,489

Market Breadth	▲ 42	▼ 10	= 7
----------------	------	------	-----

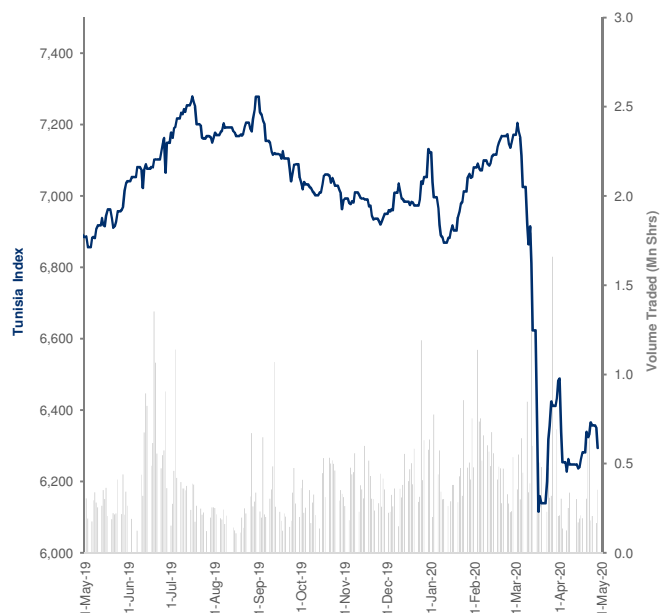
Most Active Stocks By Value	Price (EGP)	Daily % Chg	Value (EGP Mn)
Commercial International Bank	61.64	(0.47%)	258.27
ElSewedy Electric Co	9.09	(5.02%)	75.37
Oriental Weavers	5.52	2.79%	42.45
Telecom Egypt Co	10.61	5.36%	39.23
Ezz Steel Co SAE	7.24	3.72%	37.73

Source: Bloomberg, Kamco Research

Tunisia Stock Exchange Daily Report

April 29, 2020

Index Performance relative to Volume



Sector Returns

	Market Cap. (DT Mn)	DTD % Chg	MTD % Chg	YTD % Chg
Tunisia Stock Exchange	20,688.3	(0.8%)	(1.9%)	(9.9%)
Banking	8,341.2	0.4%	(3.0%)	(13.2%)
Insurance	782.5	0.0%	3.6%	(4.3%)
Leasing	486.4	(0.2%)	(2.1%)	(5.0%)
Financial Services	2,364.6	(0.1%)	(2.4%)	(3.9%)
Industrial	1,353.8	(1.3%)	(3.8%)	(22.1%)
Chemical Industry	399.5	(2.4%)	2.3%	(26.6%)
Food & Beverage	4,400.0	(2.8%)	1.7%	(0.0%)
Retailing	1,144.7	(1.6%)	(3.9%)	(3.8%)
Others	1,415.6	(1.9%)	(5.9%)	(15.5%)

Sectors' MTD % Chg is based on the Change in market cap. and it might not conform with the benchmark % Chg for each sector

Top Movers and Most Active Stocks

Best Return Performers	Price (DT)	Daily % Chg
Societe Ciments de Bizerte	1.44	2.9%
Amen Bank	25.90	2.8%
Attijari Bank	29.36	2.7%
Essoukna	2.39	2.6%
Union Internationale de Banque	17.60	2.4%

Worst Return Performers	Price (DT)	Daily % Chg
Delice Holding	10.67	(3.0%)
Industries Chimiques du Fluor	55.79	(3.0%)
Air Liquide Tunisie	86.83	(3.0%)
Societe Magasin General	27.07	(3.0%)
Cellcom SA	3.01	(2.9%)

Most Active Stocks By Volume	Price (DT)	Volume ('000 Shrs)
Delice Holding	10.67	151
SOTUMAG	3.40	30
Societe Moderne de Ceramique	0.74	29
Societe D'Articles Hygieniques	8.93	26
Banque de Tunisie	7.06	19

Trading Indicators

Market Return	Closing Value	DTD Chg	DTD % Chg	MTD % Chg	YTD-20 % Chg
Tunisia Index	6,294.37	(55.93)	(0.9%)	(2.9%)	(11.6%)
Market Cap (DT Mln)	20,688	(171)	(0.8%)	(1.9%)	(9.9%)

Trading Indicators	Today's Value	DTD Chg	DTD % Chg	Average Daily YTD-20	YTD-19
Volume ('000 Shares)	353.6	186.2	111.2%	457.8	524.9
Value Traded ('000 DT)	3,048.4	1,479.0	94.2%	3,429.7	4,278.0
No. of Trades	1,092	355	48.2%	1,230	6,933

Market Breadth	▲ 5	▼ 32	= 31
----------------	-----	------	------

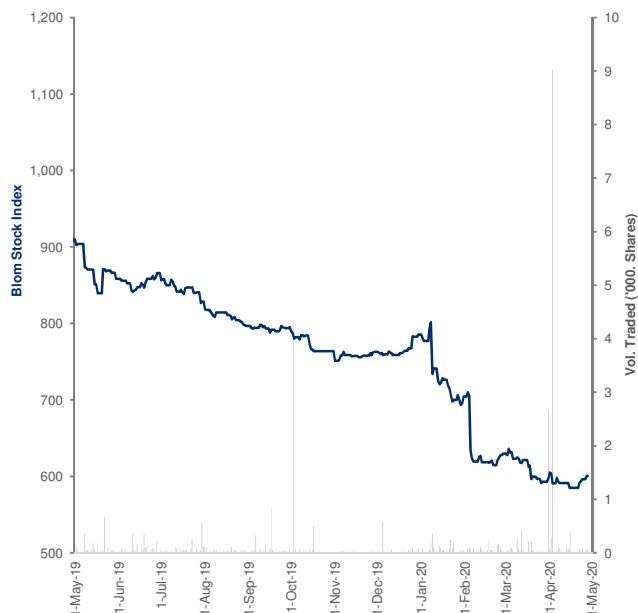
Most Active Stocks By Value	Price (DT)	Daily % Chg	Value (DT Mn)
Delice Holding	10.67	(3.00%)	1.61
Societe D'Articles Hygieniques	8.93	(2.19%)	0.24
Societe Frigorifique et Brasse	18.95	(2.82%)	0.17
Banque de Tunisie	7.06	0.00%	0.13
Banque Internationale Arabe de	102.00	(1.18%)	0.12

Source: Bloomberg, Kamco Research

Beirut Stock Exchange Daily Report

April 29, 2020

Index Performance relative to Volume



Sector Returns

	Market Cap. (USD Mn)	DTD % Chg	MTD % Chg	YTD % Chg
	10,777.1	0.8%	1.3%	(10.7%)
Banking & Finance	6,848.0	0.0%	(5.1%)	(26.8%)
Industries	220.0	0.1%	0.5%	0.4%
Trading Sector	89.5	0.0%	0.0%	0.0%
Real Estate & Construction	3,619.6	2.3%	16.3%	50.3%

Sectors' MTD % Chg is based on the Change in market cap. and it might not conform with the benchmark % Chg for each sector

Top Movers and Most Active Stocks

Best Return Performers	Price (USD)	Daily % Chg
Solidere B	10.92	2.9%
Solidere A	11.00	1.9%
Ciments Blancs Nominal	3.15	1.6%

Trading Indicators

Market Return	Closing Value	DTD Chg	DTD % Chg	MTD % Chg	YTD-20 % Chg
Blom Stock Index	600.38	0.0	0.0%	0.5%	(23.6%)
Market Cap (USD Mn)	10,777.1	80.4	0.8%	1.3%	(10.7%)

Worst Return Performers	Price (USD)	Daily % Chg
-------------------------	----------------	----------------

Trading Indicators	Today's Value	DTD Chg	DTD % Chg	Average Daily YTD-20	YTD-19
Volume ('000s shares)	61.4	(8.7)	(12.4%)	249.1	2,415.5
Value Traded ('000s USD)	467.3	(277.6)	(37.3%)	863.3	11,046.1

Market Breadth	▲ 3	▼ 0	= 22
----------------	-----	-----	------

Most Active Stocks By Volume	Price (USD)	Volume ('000 Shrs)
Solidere A	11.00	29
Bank Audi	1.30	20
Solidere B	10.92	11
Ciments Blancs Nominal	3.15	1

Most Active Stocks By Value	Price (USD)	Daily % Chg	Value (USD Mn)
Solidere A	11.00	1.85%	0.32
Solidere B	10.92	2.92%	0.12
Bank Audi	1.30	0.00%	0.03
Ciments Blancs Nominal	3.15	1.61%	0.00

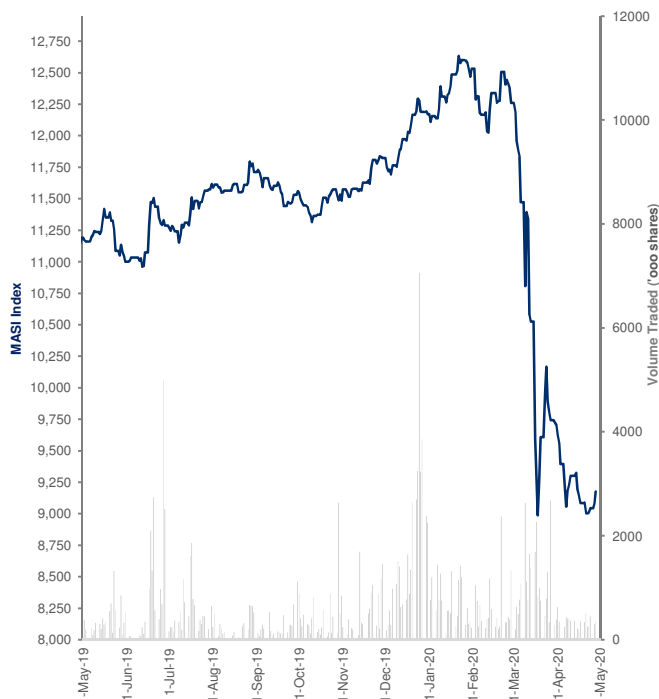
Source: Bloomberg, Kamco Research

Casablanca Stock Exchange Daily Report

(The Bulletin covers the 41 Stocks listed on the Main Market)

April 29, 2020

Index Performance relative to Volume



Sector Returns

	Market Cap. (MAD Mn)	DTD % Chg	MTD % Chg	YTD % Chg
Casablanca Stock Exchange	436,073.7	1.2%	(5.0%)	(24.1%)
Banking	157,311.4	2.1%	(9.1%)	(29.5%)
Beverages	8,461.9	1.4%	(8.0%)	(23.1%)
Chemicals	1,825.4	1.5%	2.9%	(7.7%)
Construction & Building Material	45,913.8	2.0%	(8.9%)	(32.8%)
Distributors	11,719.4	0.4%	(3.0%)	(8.3%)
Electrical & Electronic Equipment	271.5	0.0%	0.0%	(10.1%)
Electricity	19,649.3	(2.0%)	4.8%	(10.3%)
Food Producers & Processors	20,534.8	3.4%	2.0%	(20.0%)
Holding Companies	2,540.4	0.0%	(3.3%)	(15.2%)
Insurance	19,421.8	(0.7%)	(3.3%)	(18.2%)
Investment & other Finance	3,737.9	0.0%	(2.9%)	(17.9%)
Leisures & Hotel	1,090.3	(0.0%)	(22.4%)	(55.2%)
Materials, Software & Computer	2,958.0	(0.4%)	(1.1%)	(9.4%)
Mining	8,327.6	(0.5%)	(7.6%)	(39.8%)
Oil & Gas	13,328.6	0.0%	(7.8%)	(8.6%)
Real Estate	2,979.2	3.1%	(12.6%)	(37.0%)
Telecommunications	112,568.2	0.6%	0.8%	(16.3%)
Transport	674.3	(1.8%)	(22.5%)	(36.0%)
Utilities	2,720.0	0.0%	(10.5%)	(23.7%)
Forestry & Paper	40.1	(4.0%)	(11.2%)	(22.3%)

Sectors' MTD % Chg is based on the Change in market cap. and it might not conform with the benchmark % Chg for each sector

Top Movers and Most Active Stocks

Best Return Performers	Price (MAD)	Daily % Chg
Attijariwafa Bank	348.45	4.0%
Cosumar	177.85	4.0%
Ciments du Maroc	1258.00	4.0%
Douja Promotion Groupe Addoha	5.92	3.9%
Sonasid	195.00	3.2%

Worst Return Performers	Price (MAD)	Daily % Chg
Med Paper SA	15.54	(4.0%)
Saham Assurance	990.00	(3.2%)
Disway	300.00	(3.2%)
Bank of Africa	121.55	(2.8%)
Cie Miniere de Touissit	902.00	(2.4%)

Most Active Stocks By Volume	Price (MAD)	Volume ('000 Shrs)
Banque Centrale Populaire	200.00	106.1
Douja Promotion Groupe Addoha	5.92	80.1
Maroc Telecom	128.05	56.1
Bank of Africa	121.55	44.6
Attijariwafa Bank	348.45	28.7

Trading Indicators

Market Return	Closing Value	DTD Chg	DTD % Chg	MTD % Chg	YTD-20 % Chg
MASI Index	9,175.44	91.35	1.0%	(5.5%)	(24.6%)
Market Cap (MAD Mn)	436,074	5,096	1.2%	(5.0%)	(24.1%)

Trading Indicators	Today's Value	DTD Chg	DTD % Chg	Average Daily YTD-20	YTD-19
Volume ('000 Shares)	345.9	51.5	17.5%	693.0	354.8
Value Traded (MAD Mn)	70.64	24.29	52.4%	139.3	34.7

Market Breadth	▲ 14	▼ 8	= 20
----------------	------	-----	------

Most Active Stocks By Value	Price (MAD)	Daily % Chg	Value (MAD Mn)
Banque Centrale Populaire	200.00	1.01%	21.22
Label Vie	2700.00	0.00%	12.54
Attijariwafa Bank	348.45	4.00%	9.89
Maroc Telecom	128.05	0.59%	7.19
Cie Miniere de Touissit	902.00	(2.43%)	6.40

Source: Bloomberg, Kamco Research

Disclaimer & Important Disclosures

Kamco Invest is authorized and fully regulated by the Capital Markets Authority ("CMA, Kuwait") and partially regulated by the Central Bank of Kuwait ("CBK"). This document is provided for informational purposes only. Nothing contained in this document constitutes investment, an offer to invest, legal, tax or other advice or guidance and should be disregarded when considering or making investment decisions. In preparing this document, Kamco Invest did not take into account the investment objectives, financial situation and particular needs of any particular person. Accordingly, before acting on this document, investors should independently evaluate the investments and strategies referred to herein and make their own determination of whether it is appropriate in light of their own financial circumstances and objectives. The entire content of this document is subject to copyright with all rights reserved. This research and the information contained herein may not be reproduced, distributed or transmitted in Kuwait or in any other jurisdiction to any other person or incorporated in any way into another document or other material without our prior written consent.

Analyst Certification

Each of the analysts identified in this report certifies, with respect to the sector, companies or securities that the individual analyses, that (1) the views expressed in this report reflect his or her personal views about all of the subject companies and securities and (2) no part of his or her compensation was, is or will be directly or indirectly dependent on the specific recommendations or views expressed in this report.

Kamco Invest Ratings

Kamco Invest research is based on the analysis of regional and country economics, industries and company fundamentals. Kamco Invest company research reflects a long-term (12-month) target price for a company or stock. The ratings bands are:

***Outperform:** Target Price represents expected returns $\geq 10\%$ in the next 12 months

***Neutral:** Target Price represents expected returns between -10% and $+10\%$ in the next 12 months

***Underperform:** Target Price represents an expected return of $<-10\%$ in the next 12 months

In certain circumstances, ratings may differ from those implied by a fair value target using the criteria above. Kamco Invest policy is to maintain up-to-date fair value targets on the companies under its coverage, reflecting any material changes to the analyst's outlook on a company. Share price volatility may cause a stock to move outside the rating range implied by Kamco Invest's fair value target. Analysts may not necessarily change their ratings if this happens, but are expected to disclose the rationale behind their view to Kamco Invest clients.

Any terms and conditions proposed by you which are in addition to or which conflict with this Disclaimer are expressly rejected by Kamco Invest and shall be of no force or effect. The information contained in this document is based on current trade, statistical and other public information we consider reliable. We do not represent or warrant that such information is fair, accurate or complete and it should not be relied upon as such. Kamco Invest has no obligation to update, modify or amend this document or to otherwise notify a recipient thereof in the event that any opinion, forecast or estimate set forth herein, changes or subsequently becomes inaccurate. The publication is provided for informational uses only and is not intended for trading purposes. The information on publications does not give rise to any legally binding obligation and/or agreement, including without limitation any obligation to update such information. You shall be responsible for conducting your own investigation and analysis of the information contained or referred to in this document and of evaluating the merits and risks involved in the securities forming the subject matter of this or other such document. Moreover, the provision of certain data/information in the publication may be subject to the terms and conditions of other agreements to which Kamco Invest is a party.

Nothing in this document should be construed as a solicitation or offer, or recommendation, to acquire or dispose of any investment or to engage in any other transaction, or to provide any investment advice or service. This document is directed at Professional Clients and not Retail Clients within the meaning of CMA rules. Any other persons in receipt of this document must not rely upon or otherwise act upon it. Entities and individuals into whose possession this document comes are required to inform themselves about, and observe such restrictions and should not rely upon or otherwise act upon this document where it is unlawful to make to such person such an offer or invitation or recommendation without compliance with any authorization, registration or other legal requirements.

'Kamco Investment Company (DIFC) Limited ("Kamco Invest DIFC"), Office 205, Level 2, Gate Village 1, Dubai International Financial Centre, a wholly owned subsidiary of Kamco Investment Company KSC (Public), is regulated by the Dubai Financial Services Authority (DFSA). Kamco Invest DIFC may only undertake the financial services activities that fall within the scope of its existing DFSA licence. The information in this document may be distributed by Kamco Invest DIFC on behalf of Kamco Investment Company KSC (Public). This document is intended for Professional Clients or Market Counterparties only as defined by the DFSA, and no other person should act upon it.

Risk Warnings

Any prices, valuations or forecasts are indicative and are not intended to predict actual results, which may differ substantially from those reflected. The value of an investment may go up as well as down. The value of and income from any investment may fluctuate from day to day as a result of changes in relevant economic markets (including, without limitation, foreseeable or unforeseeable changes in interest rates, foreign exchange rates, default rates, prepayment rates, political or financial conditions, etc.).

Past performance is not indicative of future results. Any opinions, estimates, valuations or projections (target prices and ratings in particular) are inherently imprecise and a matter of judgment. They are statements of opinion and not of fact, based on current expectations, estimates and projections, and rely on beliefs and assumptions. Actual outcomes and returns may differ materially from what is expressed or forecasted. There are no guarantees of future performance. Certain transactions, including those involving futures, options, and other derivatives, give rise to substantial risk and are not suitable for all investors. This document does not propose to identify or to suggest all of the risks (direct or indirect) which may be associated with the investments and strategies referred to herein.

Conflict of Interest

Kamco Invest and its affiliates provide full investment banking services, and they and their directors, officers and employees, may take positions which conflict with the views expressed in this document. Salespeople, traders, and other professionals of Kamco Invest may provide oral or written market commentary or trading strategies to our clients and our proprietary trading desks that reflect opinions that are contrary to the opinions expressed in this document. Our asset management area, our proprietary trading desks and investing businesses may make investment decisions that are inconsistent with the recommendations or views expressed in this document. Kamco Invest may have or seek investment banking or other business relationships for which it will receive compensation from the companies that are the subject of this document. Facts and views presented in this document have not been reviewed by, and may not reflect information known to, professionals in other Kamco Invest business areas, including investment banking personnel. United Gulf Bank, Bahrain owns majority of Kamco Invest's shareholding and this ownership may create, or may create the appearance of, conflicts of interest.

No Liability & Warranty

Kamco Invest makes neither implied nor expressed representations or warranties and, to the fullest extent permitted by applicable law, we hereby expressly disclaim any and all express, implied and statutory representations and warranties of any kind, including, without limitation, any warranty as to accuracy, timeliness, completeness, and fitness for a particular purpose and/or non-infringement. Kamco Invest will accept no liability in any event including (without limitation) your reliance on the information contained in this document, any negligence for any damages or loss of any kind, including (without limitation) direct, indirect, incidental, special or consequential damages, expenses or losses arising out of, or in connection with your use or inability to use this document, or in connection with any error, omission, defect, computer virus or system failure, or loss of any profit, goodwill or reputation, even if expressly advised of the possibility of such loss or damages, arising out of or in connection with your use of this document. We do not exclude our duties or liabilities under binding applicable law.



KAMCO Investment Company - K.S.C. (Public)

Al-Shaheed Tower, Khalid Bin Al-Waleed Street- Sharq

P.O. BOX : 28873, Safat 13149, State of Kuwait

Tel: (+965) 2233 6600 Fax: (+965) 2249 2395

Email : kamcoird@kamcoinvest.com

Website : www.kamcoinvest.com

Kamco Invest