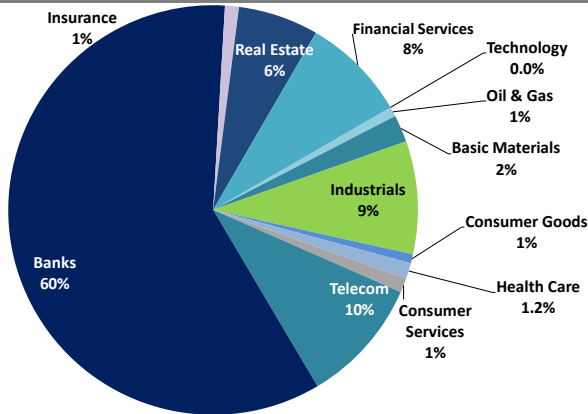


# Boursa Kuwait Daily Report

September 24, 2020

## Sector Weight by Market Cap



## Top 10 Companies by Market Capitalization

Company Name	Market Cap. (Mn KWD)	P/E (X)	ROE* (%)
1- National Bank of Kuwait	6,124.1	20.2	9.8%
2- Kuwait Finance House	5,318.2	26.6	10.7%
3- Zain	2,531.3	12.4	16.6%
4- Ahli United Bank - Bahrain	2,375.9	12.0	16.6%
5- Boubyan Bank	1,969.2	38.7	10.3%
6- Agility (PWC Logistics)	1,374.6	22.5	5.5%
7- Commercial Bank of Kuwait	996.0	NM	NM
8- Mabanee Co.	837.7	27.8	6.5%
9- Gulf Bank	701.1	13.6	8.6%
10- Ahli United Bank - Kuwait	628.1	15.0	9.7%
<b>Total</b>	<b>22,856</b>	<b>20.21</b>	<b>10.2%</b>

\*: ROE is calculated based on TTM 1H-2020 net profit & shareholders' equity as of 30-June-20

## Top Movers and Most Active Stocks

Today's Top % Gainers	Close (KWD)	Change (KWD)	Percent Change
Privatization Holding Co.	0.045	0.003	7.6%
Tijara Real Estate & Investment Co.	0.041	0.002	5.7%
Hayat Communications Co.	0.061	0.003	5.2%
Kuwait Financial Centre	0.088	0.004	4.9%
Gulf Investment House	0.105	0.005	4.8%

Today's Top % Losers	Close (KWD)	Change (KWD)	Percent Change
Kuwait Hotels Co.	0.077	(0.013)	(14.0%)
Munshaat Real Estate Projects Co.	0.070	(0.010)	(12.8%)
Gulf Cement Co.	0.033	(0.003)	(7.0%)
Al Eid Food Co.	0.060	(0.004)	(5.6%)
Gulf Franchising Co.	0.048	(0.003)	(5.0%)

Today's Most Active by Volume	Close (KWD)	Percent Change	Volume (Shares)
A'ayan Leasing & Investment Co.	0.097	4.3%	75,258,912
Investors Holding Group Co.	0.018	(1.1%)	68,157,666
Sokouk Holding Co.	0.030	(0.3%)	27,152,323
Kuwait Finance House	0.693	(0.1%)	19,565,366
Kuwait International Bank	0.196	(1.0%)	14,829,002

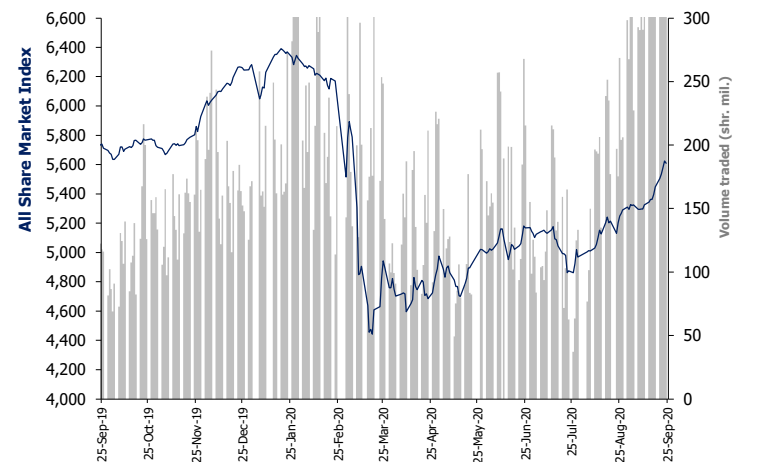
Source: Boursa Kuwait, Kamco Invest Research

## Market Capitalization - Sector Returns

	Market Cap. (KWD Mn)	DTD	DTD % Chg	MTD % Chg	YTD % Chg
<b>Boursa Kuwait</b>	<b>33,441.7</b>	<b>▼</b>	<b>(0.3%)</b>	<b>6.7%</b>	<b>(8.0%)</b>
Oil & Gas	251.3	▲	0.0%	4.0%	(2.6%)
Basic Materials	703.5	▼	(0.9%)	1.2%	(12.9%)
Industrials	2,952.7	▼	(0.3%)	7.2%	(10.3%)
Consumer Goods	239.0	▼	(0.9%)	(3.1%)	21.1%
Health Care	406.7	▼	(1.1%)	(1.1%)	(7.3%)
Consumer Services	377.6	▼	(0.9%)	2.6%	(31.6%)
Telecommunications	3,278.4	▼	(0.5%)	(0.1%)	(4.1%)
Banks	19,655.5	▼	(0.3%)	6.7%	(10.6%)
Insurance	369.8	▼	(0.7%)	5.1%	6.5%
Real Estate	2,092.6	▼	(0.2%)	12.5%	(7.4%)
Financial Services	2,738.7	▲	0.5%	16.9%	(1.1%)
Technology	7.4	▲	0.5%	8.3%	4.5%
Utilities	368.5	=	0.0%	4.7%	N/A

Market Breadth	▲ 44	▼ 63	■ 67		
Benchmark Return	Closing	DTD	DTD	MTD	YTD
	Value	Chg	% Chg	% Chg	% Chg
Premier Market Index	6,221.64	(18.9)	(0.3%)	6.3%	(10.8%)
Main 50 Index	4,447.64	(1.6)	(0.0%)	6.3%	(10.9%)
Main Market Index	4,391.30	(8.7)	(0.2%)	4.9%	(10.6%)
All Share Market Index	5,608.82	(15.6)	(0.3%)	5.9%	(10.7%)
Market Cap (KWD Mn)	33,441.68	(90.1)	(0.3%)	6.7%	(8.0%)

## Index Performance relative to Volume



## Market Trading Data and Volatility

Trading Indicators	Today's Value	DTD Chg	DTD % Chg	Average Daily YTD 2020	YTD 2019
Volume (Shrs Mn)	442.6	(6.7)	(1.5%)	195.7	88.6
Value Traded (KWD Mn)	67.5	(0.0)	(0.1%)	36.1	16.9
No. of Trades	15,855	513	3.34%	8,658	3,810

Today's Most Active by Value	Close (KWD)	Percent Change	Value (KWD)
Kuwait Finance House	0.693	(0.1%)	13,560,891
A'ayan Leasing & Investment Co.	0.097	4.3%	7,365,201
National Bank of Kuwait	0.894	(0.6%)	6,457,816
Zain	0.585	(0.2%)	3,468,363
Ahli United Bank - Bahrain	0.244	(0.4%)	3,086,345

## Boursa Kuwait - Premier Market

Thursday, September 24, 2020

	Premier Market Stocks	Closing Price			Market Capitalization			Valuation Multiples				ROE	YTD-20 Price Return	YTD-20 Trading Indicators	
		KWD	DTD Chg. (KWD)	D-T-D Return	KWD Mn	Weight in Premier Index	Weight in Boursa Kuwait	P/E (X)	P/BV (X)	Yield	Beta			Volume (Mn Shrs)	Value (KWD Mn)
▼	National Bank of Kuwait	0.894	(0.005)	(0.6%)	6,124	24.7%	18.3%	20.2	1.99	3.7%	1.28	9.8%	(12.3%)	1,096.73	926.86
▼	Gulf Bank	0.230	(0.001)	(0.4%)	701	2.8%	2.1%	13.6	1.17	4.5%	1.13	8.6%	(24.1%)	1,261.90	283.09
▼	Kuwait International Bank	0.196	(0.002)	(1.0%)	222	0.9%	0.7%	29.1	0.86	3.1%	1.00	3.0%	(24.9%)	1,217.70	233.02
▼	Burgan Bank	0.209	(0.004)	(1.9%)	549	2.2%	1.6%	8.8	0.77	5.7%	1.05	8.8%	(31.3%)	415.58	90.99
▼	Kuwait Finance House	0.693	(0.001)	(0.1%)	5,318	21.5%	15.9%	26.6	2.85	2.6%	1.42	10.7%	(6.0%)	1,864.16	1,218.85
=	Boubyan Bank	0.604	0.000	0.0%	1,969	7.9%	5.9%	38.7	3.97	1.3%	1.04	10.3%	6.5%	192.21	103.91
▼	Kuwait Projects Co. (Holding)	0.158	(0.001)	(0.6%)	316	1.3%	0.9%	5.3	1.46	6.2%	0.58	27.3%	(26.9%)	220.29	36.23
▼	Mabane Co.	0.758	(0.003)	(0.4%)	838	3.4%	2.5%	27.8	1.81	1.7%	1.10	6.5%	(11.2%)	206.10	135.66
▼	National Industries Group (Holding)	0.177	(0.001)	(0.6%)	253	1.0%	0.8%	NM	0.80	5.6%	1.42	NM	(26.6%)	600.96	109.09
▼	Boubyan Petrochemical Co.	0.563	(0.005)	(0.9%)	301	1.2%	0.9%	25.5	1.35	6.0%	0.73	5.3%	(15.7%)	72.85	41.14
▼	Qurain Petrochemicals Industries Co.	0.279	(0.003)	(1.1%)	307	1.2%	0.9%	11.9	0.73	5.4%	0.76	6.1%	(10.0%)	137.08	35.96
=	Agility Public Warehousing Co.	0.678	0.000	0.0%	1,375	5.5%	4.1%	22.5	1.24	0.6%	1.47	5.5%	(4.7%)	514.21	335.86
▼	Mobile Telecommunications Co.	0.585	(0.001)	(0.2%)	2,531	10.2%	7.6%	12.4	2.06	5.6%	1.39	16.6%	(2.5%)	777.54	417.45
▼	Human Soft Holding Co.	2.683	(0.027)	(1.0%)	328	1.3%	1.0%	12.4	3.73	0.0%	0.47	29.9%	(10.9%)	43.51	120.01
▼	Ahli United Bank (B.S.C)	0.244	(0.001)	(0.4%)	2,376	9.6%	7.1%	12.0	2.00	7.4%	1.12	16.6%	(16.2%)	3,626.97	789.31
▲	Warba Bank	0.248	0.004	1.6%	391	1.6%	1.2%	NM	2.14	0.0%	0.99	NM	(5.3%)	652.95	141.64
▼	Mezzan Holding Co.	0.624	(0.006)	(1.0%)	194	0.8%	0.6%	30.1	1.76	2.4%	0.46	5.8%	24.8%	59.58	33.08
▼	Integrated Holding Co.	0.380	(0.002)	(0.5%)	84	0.3%	0.2%	31.7	1.38	7.9%	0.46	4.3%	(31.0%)	56.54	25.72
=	Shamal Az-Zour Al-Oula Power and Water	0.335	0.000	0.0%	369	1.5%	1.1%	30.0	4.81	0.0%	NA	16.1%	NA	363.41	125.12
▲	Boursa Kuwait Securities Co.	1.180	0.042	3.7%	237	1.0%	0.7%	20.8	7.24	0.0%	NA	34.8%	NA	21.87	23.55
Subtotal- Premier Market Stocks		6,221.64	(18.94)	-0.30%	24,781	100%	74%	19.7	1.95	3.55%		9.9%	-10.7%	13,402.16	5,226.54
Remaining of the Market					8,661		26%	NM	0.84	3.19%		-0.8%		20,849.13	1,096.07

Source: Kamco Research

# Boursa Kuwait Daily Bulletin

Thursday, September 24, 2020

Company	Reuters Ticker	Valuation Multiples				Price (KWD)		MKT Cap (KWD Mn.)	52 Weeks High (KWD)	52 Weeks Low (KWD)	YTD-20 Return #	Daily Trading Data		YTD-20 Capital Turnover	ROE
		Trailing P/E (X)	Trailing P/BV (X)	Dividend Yield	Beta	Closing	DTD Change					Volume (Shrs.)	Value (KWD)		
▲ Senergy Holding Co.	SENE.KW	NM	0.37	0.00%	1.13	0.018	0.000	3.7	0.027	0.014	(16.4%)	32,010	560	28.1%	NM
= Independent Petroleum Group	IPGK.KW	14.1	0.98	5.62%	0.28	0.430	0.000	96.6	0.497	0.375	(10.8%)	0	0	0.3%	7.0%
= National Petroleum Services Co.	NAPS.KW	12.7	2.97	6.17%	0.23	1.100	0.000	110.0	1.389	0.903	(6.0%)	0	0	0.3%	23.4%
▼ The Energy House Co.	ENER.KW	NM	0.66	0.00%	0.94	0.020	(0.001)	15.3	0.036	0.014	(10.5%)	46,050	923	6.0%	NM
▼ Gulf Petroleum Investment	GPIK.KW	NM	0.14	0.00%	1.06	0.019	(0.000)	5.7	0.023	0.012	(4.0%)	7,468,239	143,610	585.1%	NM
▲ Burgan Co. for Drilling, Tdg. & Maint. *	ABAR.KW	15.2	0.31	0.00%	NA	0.083	0.002	20.0	0.098	0.060	3.1%	22,500	1,842	0.2%	2.0%
<b>Oil &amp; Gas</b>		<b>29.9</b>	<b>0.91</b>	<b>4.86%</b>				<b>251.3</b>			<b>(2.6%)</b>	<b>7,568,799</b>	<b>146,935</b>		<b>3.1%</b>
▼ Kuwait Foundry Co.	KFDC.KW	38.5	0.90	6.00%	0.66	0.250	(0.005)	18.1	0.510	0.192	(25.4%)	16,498	4,130	2.5%	2.3%
▼ Boubyan Petrochemicals Co.*	BPCC.KW	25.5	1.35	6.05%	0.73	0.563	(0.005)	301.1	0.800	0.395	(15.7%)	421,034	238,403	13.6%	5.3%
= Al Kout for Industrial Projects Co.	ALKK.KW	27.8	2.84	6.50%	0.02	0.769	0.000	77.6	0.850	0.769	(9.5%)	0	0	0.0%	10.2%
▼ Qurain Petrochemical Industries Co. *	ALQK.KW	11.9	0.73	5.43%	0.76	0.279	(0.003)	306.7	0.323	0.163	(10.0%)	528,838	148,331	12.5%	6.1%
<b>Basic Materials</b>		<b>17.2</b>	<b>1.01</b>	<b>5.83%</b>				<b>703.5</b>			<b>(12.9%)</b>	<b>966,370</b>	<b>390,864</b>		<b>5.9%</b>
▲ Specialities Group Holding Co.	SPEC.KW	12.0	0.36	0.00%	0.40	0.065	0.001	10.7	0.078	0.050	(15.1%)	111,548	7,141	29.7%	3.0%
= Kuwait Cement Co.	KCEM.KW	NM	0.87	2.35%	0.47	0.207	0.000	151.8	0.270	0.144	(15.9%)	949,257	195,677	10.1%	NM
▲ Gulf Cable & Electrical Ind. Co.	CABL.KW	36.9	0.94	5.49%	0.91	0.729	0.011	153.0	0.742	0.390	49.4%	948,926	688,501	46.1%	2.6%
= Heavy Eng'g Ind. & Shipbuilding Co.	SHIP.KW	6.2	1.01	8.00%	0.60	0.375	0.000	67.6	0.419	0.298	(7.4%)	566,007	212,482	25.3%	16.2%
▼ Kuwait Portland Cement Co.	PCEM.KW	NM	1.25	5.22%	0.46	0.767	(0.015)	76.9	1.190	0.683	(21.9%)	59,654	45,876	6.2%	0.9%
= Shuaiba Industrial Co.	PAPE.KW	25.1	0.73	3.79%	0.12	0.130	0.000	13.1	0.180	0.122	(16.1%)	0	0	0.6%	2.9%
= Metal & Recycling Co.	MRCK.KW	NM	0.48	0.00%	0.20	0.041	0.000	4.8	0.070	0.020	(18.4%)	0	0	1.8%	NM
▼ ACICO Industries Co.	ACIC.KW	NM	0.39	0.00%	0.37	0.099	(0.004)	29.9	0.139	0.081	(25.6%)	232,122	22,775	6.2%	NM
= Hilal Cement Co.	HCKK.KW	NM	1.08	0.00%	0.13	0.114	0.000	11.6	0.126	0.063	14.0%	0	0	0.5%	NM
= National Industries Co.	NIBM.KW	NM	0.72	6.26%	0.15	0.154	0.000	57.4	0.173	0.143	(6.7%)	110,039	16,948	0.5%	NM
▲ Equipment Holding Co.	EQUI.KW	NM	0.37	0.00%	1.03	0.016	0.000	2.2	0.024	0.013	(26.0%)	2,579,314	41,157	27.9%	NM
= National Co. for Consumer Industries	NCCI.KW	52.8	0.52	0.00%	NA	0.048	0.000	4.3	0.100	0.010	(12.6%)	0	0	1.1%	1.0%
▼ Salbookh Trading Co.	SALB.KW	NM	0.53	0.00%	0.61	0.035	(0.000)	3.7	0.051	0.026	(29.5%)	43,464	1,478	26.3%	NM
= Agility (PWC Logistics)	AGLT.KW	22.5	1.24	0.61%	1.47	0.678	0.000	1,374.6	0.748	0.357	(4.7%)	4,243,602	2,876,250	25.4%	5.5%
= Educational Holding Group*	EDUK.KW	9.2	1.70	19.24%	0.46	0.309	0.000	75.8	0.475	0.228	(29.6%)	0	0	0.9%	18.6%
▼ National Cleaning Co.	CLEA.KW	70.7	0.40	0.00%	0.82	0.057	(0.000)	14.2	0.088	0.047	(17.5%)	121,888	6,668	23.2%	0.6%
▲ Kuwait & Gulf Link Transport Co.	KGLK.KW	NM	0.23	0.00%	0.76	0.046	0.001	13.5	0.077	0.042	(30.1%)	164,494	7,592	14.5%	NM
▼ Kuwait Co. For Process Plant Const. & Cont.	KCPC.KW	6.7	1.25	7.11%	0.47	0.309	(0.001)	34.1	0.338	0.175	28.3%	26,582	8,184	37.4%	18.7%
▼ Humansoft Holding Co.	HUMN.KW	12.4	3.73	0.00%	0.47	2.683	(0.027)	328.0	3.470	1.944	(10.9%)	121,497	330,416	35.6%	29.9%
▼ Gulf Franchising Co.	GFCI.KW	NM	1.18	0.00%	NA	0.048	(0.003)	1.9	0.148	0.001	(36.4%)	800	38	0.6%	NM
▲ National Shooting Co.	SHOOTING.KW	NM	0.26	0.00%	1.23	0.014	0.000	4.0	0.018	0.007	44.0%	2,867,450	41,480	94.3%	NM
▲ Combined Group Contracting Co.	CGCK.KW	NM	0.74	0.00%	0.59	0.173	0.002	29.7	0.251	0.138	(30.4%)	1,813,682	313,436	107.3%	NM
= United Projects Group	UPAC.KW	60.4	1.28	0.00%	NA	0.465	0.000	91.7	0.512	0.367	(9.2%)	0	0	0.0%	2.1%
▼ ALAFCO Aviation Lease & Finance Co.*	ALAF.KW	26.9	0.50	4.76%	0.85	0.168	(0.002)	160.0	0.278	0.138	(38.2%)	3,005,088	508,080	31.9%	1.9%
▲ Mubarrad Holding Co.	MBRD.KW	15.5	0.53	7.66%	0.94	0.064	0.001	10.5	0.089	0.049	(27.0%)	1,723,372	110,585	87.5%	3.4%
= KGL Logistics Co.	LOGK.KW	NM	0.20	0.00%	0.77	0.027	0.000	20.1	0.043	0.023	(26.5%)	0	0	26.6%	NM
▼ Integrated holding Co.	INTEGRATED.KW	31.7	1.38	7.89%	0.46	0.380	(0.002)	83.6	0.600	0.342	(31.0%)	77,322	29,390	25.7%	4.3%
= Sharjah Cement Co.	SCEM.KW	NM	0.22	0.00%	0.22	0.042	0.000	25.7	0.064	0.042	0.0%	0	0	0.0%	NM
▼ Gulf Cement Co.	GCEM.KW	NM	0.35	0.00%	0.21	0.033	(0.003)	27.2	0.060	0.029	(39.7%)	284,960	9,560	2.1%	NM
= Umm Al-Qaiwain General Investments Co.	QIC.KW	NM	0.52	6.94%	0.16	0.072	0.000	26.1	0.096	0.052	7.9%	0	0	0.2%	0.4%
= Fujairah Cement Industries Co.	FCEM.KW	NM	0.15	0.00%	0.48	0.036	0.000	12.6	0.052	0.029	(21.1%)	0	0	6.0%	NM
= Ras-Al-Khaimah for White Cement Co.	RKWC.KW	67.2	0.54	7.69%	0.11	0.065	0.000	32.5	0.080	0.055	0.0%	0	0	0.0%	0.8%
<b>Industrials</b>		<b>54.7</b>	<b>0.96</b>	<b>2.38%</b>				<b>2,952.7</b>			<b>(10.3%)</b>	<b>20,051,068</b>	<b>5,473,714</b>		<b>1.7%</b>

# Boursa Kuwait Daily Bulletin

Thursday, September 24, 2020

Company	Reuters Ticker	Valuation Multiples				Price (KWD)		MKT Cap (KWD Mn.)	52 Weeks High (KWD)	52 Weeks Low (KWD)	YTD-20 Return #	Daily Trading Data		YTD-20 Capital Turnover	ROE
		Trailing P/E (X)	Trailing P/BV (X)	Dividend Yield	Beta	Closing	DTD Change					Volume (Shrs.)	Value (KWD)		
= Palms Agro Production Co.	PAPK.KW	16.6	0.59	0.00%	0.24	0.065	0.000	3.4	0.065	0.025	61.7%	0	0	0.7%	3.6%
▼ Livestock Transport & Trading Co.	CATT.KW	24.0	0.95	0.00%	0.27	0.185	(0.001)	40.1	0.200	0.152	5.7%	56,419	10,445	12.4%	4.0%
= Danah Alsafat Foodstuff Co.	DANK.KW	NM	0.63	0.00%	0.74	0.012	0.000	1.3	0.029	0.010	(25.3%)	0	0	97.4%	NM
▼ Mezzan Holding Co.	MEZZ.KW	30.1	1.76	2.36%	0.46	0.624	(0.006)	194.3	0.665	0.428	24.8%	246,665	154,079	19.1%	5.8%
<b>Consumer Goods</b>		<b>NM</b>	<b>1.49</b>	<b>1.92%</b>		<b>239.0</b>		<b>239.0</b>			<b>21.1%</b>	<b>303,084</b>	<b>164,523</b>		<b>NM</b>
▼ Advanced Technology Co.	ATCK.KW	35.7	1.53	1.68%	0.00	0.597	(0.030)	89.6	0.900	0.580	(26.3%)	2,091	1,248	0.0%	4.3%
= Yiacco Medical Co.	YIAC.KW	NM	6.55	0.00%	NA	0.707	0.000	12.1	0.777	0.672	0.1%	0	0	0.0%	NM
= Al-Maidan Clinic For Oral Health Services Co.	MIDAN.KW	51.1	7.58	0.00%	0.00	1.220	0.000	305.0	1.220	1.220	0.0%	0	0	0.0%	14.8%
<b>Health Care</b>		<b>48.7</b>	<b>4.04</b>	<b>0.37%</b>		<b>406.7</b>		<b>406.7</b>			<b>(7.3%)</b>	<b>2,091</b>	<b>1,248</b>		<b>8.3%</b>
▼ Kuwait National Cinema Co.	KCIN.KW	30.9	0.98	4.61%	0.27	0.700	(0.025)	70.7	1.050	0.600	(33.2%)	2,966	2,076	1.0%	3.2%
▼ Kuwait Hotels Co.	KHOT.KW	NM	1.16	0.00%	NA	0.077	(0.013)	4.5	0.101	0.069	(22.9%)	52,600	4,318	0.2%	NM
▼ Sultan Center Food Products Co.	SCFK.KW	17.6	0.69	0.00%	0.52	0.055	(0.000)	31.9	0.060	0.036	6.0%	64,463	3,555	7.2%	3.9%
= Kuwait Cable Vision Co.	KWTV.KW	NM	0.52	0.00%	0.21	0.014	0.000	0.5	0.026	0.012	0.0%	0	0	0.0%	NM
▼ IFA Hotels & Resorts Co.*	IFAH.KW	NM	1.76	0.00%	0.23	0.024	(0.000)	15.1	0.062	0.021	(56.7%)	589,513	14,075	12.6%	NM
= Oula Fuel Marketing Co.	OULA.KW	31.8	0.71	0.00%	0.46	0.110	0.000	44.5	0.134	0.095	(13.4%)	128,467	14,077	4.5%	2.2%
▲ Kuwait Resorts Co.	MUNK.KW	16.9	0.38	0.00%	0.69	0.053	0.001	11.1	0.060	0.038	(8.5%)	140,970	7,478	48.1%	2.3%
▼ Jazeera Airways Co.	JAZK.KW	NM	4.37	0.00%	0.70	0.572	(0.003)	114.4	1.110	0.372	(48.0%)	151,816	86,878	24.2%	NM
▲ Soor Fuel Marketing Co.	SOOR.KW	21.0	0.69	0.00%	0.46	0.112	0.003	45.3	0.129	0.096	(10.4%)	23,620	2,617	4.8%	3.3%
= Future Kid Entertainment and R.E Co.	KIDK.KW	NM	0.55	0.00%	0.03	0.080	0.000	9.3	0.110	0.069	(9.3%)	0	0	0.6%	NM
= Al Rai Media Group Co.	ALRA.KW	NM	0.86	0.00%	0.26	0.037	0.000	8.6	0.045	0.031	(2.4%)	0	0	0.3%	NM
▼ Jiyad Holding Co	JYAD.KW	11.6	0.37	0.00%	0.63	0.041	(0.000)	14.4	0.047	0.029	5.1%	475,000	19,428	16.8%	3.2%
▼ Al Eid Food Co.	ALEID.KW	5.1	0.39	0.00%	NA	0.060	(0.004)	7.3	0.080	0.038	(8.3%)	66,899	4,067	5.6%	7.8%
<b>Consumer Services</b>		<b>NM</b>	<b>0.95</b>	<b>0.86%</b>		<b>377.6</b>		<b>377.6</b>			<b>(31.6%)</b>	<b>1,696,314</b>	<b>158,570</b>		<b>NM</b>
▼ Zain	ZAIN.KW	12.4	2.06	5.64%	1.39	0.585	(0.001)	2,531.3	0.604	0.407	(2.5%)	5,928,604	3,468,363	18.0%	16.6%
▼ National Mobile Telecom Co.	OORE.KW	21.5	0.57	8.04%	0.46	0.618	(0.002)	311.5	0.835	0.550	(25.4%)	55,482	34,158	3.3%	2.7%
= AAN digital services Co.	AAN.KW	NM	0.36	0.00%	1.32	0.012	0.000	10.5	0.021	0.009	(11.1%)	7,904,240	95,262	167.5%	NM
▼ Kuwait Telecommunication Co.	STC.KW	10.6	2.03	5.95%	0.58	0.840	(0.020)	419.5	0.870	0.680	6.6%	77,218	65,175	2.3%	19.2%
▲ Hayat Communications Co.	HAYK.KW	7.4	0.52	0.00%	1.20	0.061	0.003	5.6	0.098	0.030	(18.9%)	100	6	6.4%	7.0%
<b>Telecommunications</b>		<b>12.7</b>	<b>1.63</b>	<b>5.88%</b>		<b>3,278.4</b>		<b>3,278.4</b>			<b>(4.1%)</b>	<b>13,965,644</b>	<b>3,662,964</b>		<b>12.8%</b>
▼ National Bank of Kuwait	NBKK.KW	20.2	1.99	3.68%	1.28	0.894	(0.005)	6,124.1	1.062	0.654	(12.3%)	7,193,997	6,457,816	16.0%	9.8%
▼ Gulf Bank	GBKK.KW	13.6	1.17	4.55%	1.13	0.230	(0.001)	701.1	0.317	0.180	(24.1%)	12,837,100	2,961,640	41.4%	8.6%
= Commercial Bank of Kuwait	CBKK.KW	NM	1.47	0.00%	0.39	0.500	0.000	996.0	0.555	0.465	(5.5%)	107,051	53,526	1.4%	NM
= Ahli Bank of Kuwait	ABKK.KW	NM	0.55	3.58%	0.62	0.194	0.000	314.1	0.310	0.156	(24.2%)	3,285,491	637,916	8.3%	0.3%
▲ Ahli United Bank - Kuwait	BKME.KW	15.0	1.45	4.46%	0.85	0.290	0.001	628.1	0.330	0.225	(11.0%)	1,430,286	414,370	6.0%	9.7%
▼ Kuwait International Bank	KIBK.KW	29.1	0.86	3.07%	1.00	0.196	(0.002)	222.0	0.271	0.162	(24.9%)	14,829,002	2,911,246	107.5%	3.0%
▼ Burgan Bank	BURG.KW	8.8	0.77	5.73%	1.05	0.209	(0.004)	548.6	0.324	0.175	(31.3%)	4,207,827	886,462	15.8%	8.8%
▼ Kuwait Finance House	KFH.KW	26.6	2.85	2.60%	1.42	0.693	(0.001)	5,318.2	0.761	0.473	(6.0%)	19,565,366	13,560,891	24.3%	10.7%
= Boubayan Bank	BOUK.KW	38.7	3.97	1.32%	1.04	0.604	0.000	1,969.2	0.638	0.380	6.5%	1,332,536	803,160	5.9%	10.3%
▲ Warba Bank	WARB.KW	NM	2.14	0.00%	0.99	0.248	0.004	390.6	0.279	0.164	(5.3%)	11,498,414	2,868,819	41.5%	NM
▼ Ahli United Bank - Bahrain	AUBK.KW	12.0	2.00	7.39%	1.12	0.244	(0.001)	2,375.9	0.311	0.160	(16.2%)	12,677,723	3,086,345	37.2%	16.6%
<b>Banks</b>		<b>21.8</b>	<b>1.96</b>	<b>3.43%</b>		<b>19,655.5</b>		<b>19,655.5</b>			<b>(10.6%)</b>	<b>88,964,793</b>	<b>34,642,189</b>		<b>9.0%</b>



## Boursa Kuwait Daily Bulletin

Thursday, September 24, 2020

Company	Reuters Ticker	Valuation Multiples				Price (KWD)		MKT Cap (KWD Mn.)	52 Weeks High (KWD)	52 Weeks Low (KWD)	YTD-20 Return #	Daily Trading Data		YTD-20 Capital Turnover	ROE
		Trailing P/E (X)	Trailing P/BV (X)	Dividend Yield	Beta	Closing	DTD Change					Volume (Shrs.)	Value (KWD)		
▼ Kuwait Insurance Co.	KINS.KW	6.3	0.80	7.94%	NA	0.360	(0.010)	69.9	0.387	0.300	9.1%	30,360	10,930	1.2%	12.8%
▲ Gulf Insurance Group	GINS.KW	8.1	1.10	5.59%	0.08	0.650	0.001	121.6	0.680	0.550	(1.5%)	40	25	0.1%	13.6%
▼ Ahleiah Insurance Co.	AINS.KW	7.9	0.80	5.76%	0.12	0.406	(0.008)	85.3	0.445	0.367	(0.4%)	186,151	75,705	1.5%	10.1%
= Warba Insurance Co.	WINS.KW	12.8	0.40	8.74%	0.36	0.079	0.000	13.9	0.094	0.051	29.8%	22,669	1,720	2.0%	3.1%
▲ Kuwait Reinsurance Co.	KWRE.KW	8.9	0.80	2.14%	0.02	0.215	0.004	43.9	0.211	0.126	55.8%	2,000	430	0.1%	9.1%
= First Takaful Insurance Co.	FTIK.KW	NM	0.47	0.00%	0.33	0.040	0.000	4.2	0.056	0.031	4.2%	800	32	2.6%	NM
= Wethaq Takaful Insurance Co.	WETH.KW	NM	0.21	0.00%	0.38	0.023	0.000	2.5	0.035	0.018	(8.0%)	584,802	13,435	17.0%	NM
= Bahrain Kuwait Insurance Co.	BKIK.KW	12.0	0.94	7.50%	0.02	0.200	0.000	28.6	0.220	0.190	0.0%	0	0	0.0%	7.8%
<b>Insurance</b>		<b>9.4</b>	<b>0.83</b>	<b>5.83%</b>				<b>369.8</b>			<b>6.5%</b>	<b>826,822</b>	<b>102,277</b>		<b>8.8%</b>
▼ Sokouk Holding Co.	SHCK.KW	NM	0.45	0.00%	1.17	0.030	(0.000)	18.0	0.040	0.022	(13.6%)	27,152,323	830,958	52.2%	NM
▼ Kuwait Real Estate Co.	KREK.KW	25.4	0.72	0.00%	0.99	0.097	(0.002)	92.0	0.115	0.070	(7.5%)	2,073,058	201,278	20.5%	2.8%
▼ United Real Estate Co.	UREK.KW	NM	0.32	0.00%	0.38	0.051	(0.000)	60.0	0.063	0.045	(17.6%)	13,279	670	0.6%	NM
▲ National Real Estate Co.	NREK.KW	25.1	0.40	0.00%	1.14	0.076	0.000	107.9	0.090	0.058	(13.3%)	9,844,455	743,690	18.8%	1.6%
▲ Salhia Real Estate Co.	SREK.KW	6.2	1.24	5.98%	0.34	0.403	0.006	206.6	0.460	0.328	(3.4%)	783,104	312,232	5.8%	20.2%
= Tamdeen Real Estate Co.	TAMK.KW	NM	0.81	1.83%	0.10	0.265	0.000	114.5	0.343	0.241	(17.4%)	13,875	3,611	0.6%	NM
▲ Ajial Real Estate Entertainment Co.	AREC.KW	20.3	0.22	0.00%	0.50	0.142	0.004	27.6	0.213	0.115	(17.6%)	43,200	6,095	4.6%	1.1%
▲ Al Massaleh Real Estate Co.	MREC.KW	NM	0.43	0.00%	0.24	0.038	0.002	9.0	0.040	0.026	3.5%	451,299	16,904	1.9%	NM
▲ Arab Real Estate Co.	ARAB.KW	NM	0.28	0.00%	1.18	0.028	0.001	14.0	0.033	0.020	(6.8%)	7,929,720	209,967	25.8%	NM
▼ AL-Enma'a Real Estate Co.*	ENMA.KW	22.1	0.50	0.00%	0.64	0.050	(0.000)	22.5	0.079	0.037	(20.2%)	3,601,367	181,747	33.0%	2.3%
▼ Mabanee Co.	MABK.KW	27.8	1.81	1.74%	1.10	0.758	(0.003)	837.7	0.878	0.434	(11.2%)	1,469,041	1,116,712	18.7%	6.5%
= Injazzat Real Estate Development Co.	INJA.KW	NM	0.52	0.00%	0.20	0.079	0.000	27.3	0.091	0.061	(1.3%)	0	0	1.1%	NM
▼ Investors Holding Group Co.	INVK.KW	NM	0.88	0.00%	1.18	0.018	(0.000)	11.1	0.032	0.007	122.5%	68,157,666	1,232,596	366.8%	NM
= The Commercial Real Estate Co.	TIJK.KW	19.5	0.64	4.77%	0.53	0.103	0.000	182.3	0.111	0.083	10.1%	489,860	50,455	8.4%	3.3%
▲ Sanam Real Estate Co.	SANK.KW	NM	0.44	0.00%	0.38	0.033	0.001	4.0	0.043	0.027	(17.5%)	20,000	660	3.1%	NM
▲ A'ayan Real Estate Co.	AYRE.KW	NM	0.36	0.00%	0.57	0.061	0.001	25.4	0.080	0.048	(16.6%)	967,545	58,533	4.4%	NM
= Aqar Real Estate Investment Co.	AQAR.KW	6.1	0.52	7.18%	NA	0.060	0.000	14.8	0.089	0.058	(21.3%)	20,000	1,200	1.8%	8.5%
▲ Kuwait Real Estate Holding Co.	ALAQ.KW	NM	0.62	0.00%	0.52	0.026	0.000	5.0	0.034	0.022	(8.7%)	20,000	523	8.4%	NM
▼ MAZAYA Holding Co.	MAZA.KW	NM	0.50	0.00%	0.99	0.054	(0.002)	37.0	0.067	0.047	(9.3%)	1,755,001	94,254	16.6%	NM
▲ Tijara Real Estate & Investment Co.	TIJA.KW	14.7	0.39	4.89%	0.29	0.041	0.002	15.1	0.055	0.034	(18.2%)	100	4	0.3%	2.6%
▲ Al TAMEER Real Estate Investment Co.	AMAR.KW	NM	0.33	0.00%	0.94	0.020	0.000	4.8	0.034	0.013	(25.3%)	6,166,490	121,141	93.5%	NM
= Arkan Al-Kuwait Real Estate Co. *	ARKK.KW	9.2	0.64	9.36%	0.22	0.086	0.000	21.5	0.100	0.076	(3.8%)	0	0	9.0%	6.9%
= Al-Argan International Real Estate Co.	ARGK.KW	NM	0.30	0.00%	0.43	0.093	0.000	24.5	0.135	0.060	(11.8%)	0	0	0.4%	NM
= Abyaar Real Estate Development Co.	ABYR.KW	NM	0.21	0.00%	1.20	0.007	0.000	8.1	0.013	0.005	(6.4%)	0	0	61.7%	NM
▼ Munshaat Real Estate Projects Co.	MUNS.KW	NM	0.55	0.00%	0.68	0.070	(0.010)	22.6	0.090	0.045	(5.1%)	290,413	21,092	7.3%	NM
▼ First Dubai For Real Estate Development	FIRST.KW	NM	0.56	0.00%	1.44	0.042	(0.000)	42.0	0.055	0.027	18.0%	1,296,837	54,491	30.6%	0.6%
▲ Kuwait Business Town Real Estate Co.	KBTK.KW	12.6	0.28	0.00%	1.06	0.031	0.000	19.5	0.046	0.022	(29.3%)	3,400,504	105,929	44.3%	2.2%
= Real Estate Asset Management Co.	REAM.KW	NM	1.48	0.00%	0.08	0.204	0.000	22.4	0.204	0.060	132.1%	0	0	0.1%	NM
▲ MENA Real Estate Co. *	MENK.KW	NM	0.21	0.00%	0.98	0.029	0.001	4.0	0.043	0.021	(29.5%)	4,626,862	133,631	102.5%	NM
= Al Mudon International Real Estate Co.	ALMK.KW	NM	0.12	0.00%	0.86	0.016	0.000	1.6	0.029	0.015	(35.1%)	0	0	23.7%	NM
= Real Estate Trade Centers Co.	MARA.KW	18.6	0.19	0.00%	0.33	0.031	0.000	4.5	0.050	0.018	33.2%	0	0	27.3%	1.0%
▼ Kuwait Remal Real Estate Co.	REMAK.KW	NM	0.33	0.00%	0.86	0.022	(0.000)	6.7	0.027	0.013	(10.7%)	1,081,501	23,145	20.3%	NM
▲ Mashaer Holding Co.	MASHAER.KW	NM	0.56	7.86%	0.53	0.064	0.002	11.4	0.086	0.048	(18.0%)	1,114,541	69,825	33.7%	NM
= Effect Real Estate Co.	EFFECT.KW	NM	0.29	0.00%	0.44	0.021	0.000	1.7	N/A	N/A	0.0%	0	0	0.0%	NM
= Ajwan Gulf Real Estate Co.	AJWN.KW	NM	0.19	0.00%	0.60	0.011	0.000	2.2	0.016	0.009	(28.7%)	0	0	116.7%	NM
▲ Al Masaken Intl. Real Estate Dev. Co.	MASKN.KW	NM	0.42	0.00%	0.16	0.036	0.002	3.6	0.074	0.026	(18.0%)	2,050	74	1.0%	0.4%
= Dalqan Real Estate Co.	DALQ.KW	62.7	2.37	0.00%	NA	0.318	0.000	15.7	0.385	0.333	(10.1%)	0	0	0.0%	3.8%
= Dar Al Thuraya Real Estate Co.	THURY.KW	NM	0.67	0.00%	NA	0.071	0.000	10.4	0.190	0.040	1.6%	27,501	1,884	2.5%	0.2%
▼ Osos Holding Group Co.	OSOS.KW	NM	0.82	7.42%	0.25	0.090	(0.000)	9.4	0.118	0.083	(10.1%)	27,751	2,403	7.2%	NM
▲ KFH Capital REIT	BAITAKREIT.KW	NA	NA	0.03%	NA	1.020	0.004	24.1	1.131	0.978	NA	3,405	3,476	5.1%	NA
<b>Real Estate</b>		<b>NM</b>	<b>0.76</b>	<b>2.06%</b>				<b>2,092.6</b>			<b>(7.4%)</b>	<b>142,842,748</b>	<b>5,599,180</b>		<b>NM</b>

# Boursa Kuwait Daily Bulletin

Thursday, September 24, 2020

Company	Reuters Ticker	Valuation Multiples				Price (KWD)		MKT Cap (KWD Mn.)	52 Weeks High (KWD)	52 Weeks Low (KWD)	YTD-20 Return #	Daily Trading Data		YTD-20 Capital Turnover	ROE
		Trailing P/E (X)	Trailing P/BV (X)	Dividend Yield	Beta	Closing	DTD Change					Volume (Shrs.)	Value (KWD)		
= Kuwait Investment Co.	KINV.KW	NM	0.76	11.38%	0.72	0.131	0.000	72.2	0.172	0.095	(12.7%)	2,596,992	340,146	27.2%	NM
▲ Commercial Facilities Co.	FACI.KW	NM	0.70	9.16%	0.52	0.186	0.001	99.8	0.235	0.179	(14.3%)	48,027	8,875	4.6%	NM
= Int'l Financial Advisors Co.	IFIN.KW	NM	0.99	0.00%	1.31	0.031	0.000	8.2	0.060	0.027	(42.3%)	0	0	32.0%	NM
= National Investment Co.	NINV.KW	NM	0.78	5.77%	1.24	0.142	0.000	124.4	0.158	0.080	2.9%	1,139,682	161,449	39.0%	NM
▼ Kuwait Projects Co.(Holding)	KPRO.KW	5.3	1.46	6.22%	0.58	0.158	(0.001)	316.0	0.225	0.147	(26.9%)	3,816,617	602,311	11.0%	27.3%
▲ Coast Invest. & Development Co.	COAS.KW	NM	0.44	0.00%	1.32	0.036	0.001	22.5	0.045	0.026	(10.0%)	1,511,568	54,097	19.1%	NM
▲ The Securities House Co.	SECH.KW	NM	0.51	0.00%	1.14	0.045	0.000	24.9	0.063	0.027	(1.5%)	2,117,779	94,638	65.6%	NM
▼ Arzan Financial Group For Fin. & Invest.	ARZA.KW	NM	0.49	0.00%	1.03	0.055	(0.000)	43.8	0.064	0.022	130.0%	9,054,620	496,238	216.5%	NM
▲ Kuwait Financial Centre	MARKZ.KW	NM	0.51	5.68%	0.77	0.088	0.004	42.3	0.121	0.070	(17.0%)	3,805,360	331,628	27.8%	NM
▼ Kuwait & M.E. Financial Inv. Co.	KMEF.KW	3.9	1.27	0.00%	0.61	0.112	(0.003)	29.5	0.138	0.063	25.1%	587,745	65,331	20.6%	32.2%
▲ First Investment Co.	OLAK.KW	NM	0.45	0.00%	1.01	0.031	0.001	20.4	0.045	0.022	(9.0%)	7,429,195	228,021	177.8%	NM
= Al-Mal Investment Co.	MALK.KW	NM	0.39	0.00%	1.20	0.009	0.000	2.9	0.016	0.008	(7.1%)	1,648,920	15,218	97.6%	NM
▲ Gulf Investment House	GIHK.KW	NM	1.90	0.00%	0.99	0.105	0.005	68.1	0.108	0.038	63.0%	2,008,655	197,786	23.2%	NM
▲ A'ayan Leasing & Investment Co.	AAYA.KW	NM	1.23	0.00%	1.24	0.097	0.004	79.0	0.102	0.032	107.9%	75,258,912	7,365,201	195.1%	NM
= Bayan Investment Co.	BAYK.KW	NM	0.52	0.00%	0.84	0.045	0.000	17.7	0.053	0.031	18.1%	25,230	1,081	6.0%	NM
▲ Osoul Investment Co.	OSUL.KW	NM	0.76	13.40%	0.44	0.082	0.001	12.8	0.121	0.070	8.7%	355,043	28,722	26.6%	NM
= Kuwait Finance & Investment Co.	KFSK.KW	NM	0.39	0.00%	0.30	0.045	0.000	14.5	0.058	0.038	(9.1%)	1,005	44	9.5%	NM
▼ Kamco Investment Co.	KAMC.KW	NM	0.52	6.80%	0.38	0.074	(0.000)	25.2	0.111	0.060	(18.3%)	442,530	32,615	15.6%	NM
▲ National International Holding Co.	NIHK.KW	7.4	0.36	0.00%	0.66	0.061	0.000	13.9	0.081	0.051	(16.8%)	10,300	600	4.7%	4.8%
▼ UniCap Investment and Finance	UNICAP.KW	NM	0.62	0.00%	0.65	0.047	(0.001)	11.3	0.057	0.035	(14.0%)	483,366	21,904	12.2%	NM
▼ Al Madar Finance & Investment Co.	MADR.KW	17.4	0.85	5.65%	0.34	0.086	(0.001)	18.3	0.148	0.062	(7.8%)	321,716	27,655	31.0%	4.9%
= Al-Deera Holding	DEER.KW	NM	1.92	0.00%	0.82	0.016	0.000	3.2	0.022	0.011	(20.0%)	0	0	6.1%	NM
▼ Al Salam Group Holding Co.	SAGH.KW	32.6	0.25	0.00%	1.27	0.028	(0.000)	7.7	0.033	0.018	(3.1%)	9,918,740	285,778	254.7%	0.8%
= Ektitab Holding Co.	EKTT.KW	NM	0.36	0.00%	1.00	0.015	0.000	4.7	0.017	0.010	(0.7%)	183,464	2,702	47.5%	NM
▼ Al Madina For Finance & Investment Co.	MADI.KW	NM	0.45	0.00%	1.22	0.013	(0.000)	5.3	0.019	0.009	(13.3%)	4,810,195	62,128	168.4%	NM
▼ NOOR Financial Investment Co.	NOOR.KW	7.8	1.19	3.56%	1.24	0.168	(0.006)	69.4	0.184	0.076	41.2%	120,062	20,411	53.8%	15.4%
▼ Tamdeen Investment Co.	TAMI.KW	NM	0.54	3.92%	0.33	0.305	(0.005)	105.2	0.400	0.199	(11.6%)	21,000	6,461	0.3%	NM
▼ Kuwait Syrian Holding Co.	KSHC.KW	NM	0.23	0.00%	0.73	0.026	(0.001)	4.5	0.043	0.022	(19.0%)	300,000	7,653	25.7%	NM
▼ Asiya Capital Investment Co.	ASIYA.KW	NM	0.36	0.00%	0.52	0.032	(0.001)	25.7	0.041	0.029	(21.5%)	6,991	224	1.7%	NM
= Gulf North Africa Holding Co.	GNAH.KW	NM	0.80	0.00%	1.09	0.060	0.000	8.9	0.062	0.052	(4.0%)	0	0	5.0%	NM
= Amwal International Investment Co.	AMWA.KW	NM	0.68	0.00%	0.39	0.036	0.000	6.4	0.053	0.030	18.7%	0	0	0.1%	NM
▲ Alimtiqaz Investment Group	ALIMK.KW	NM	0.56	0.00%	0.95	0.099	0.002	112.3	0.137	0.071	(21.3%)	13,527,959	1,346,310	41.9%	NM
= Tamkeen Holding Co.	TAMKE.KW	NM	0.05	0.00%	NA	0.005	0.000	0.3	N/A	N/A	0.0%	0	0	0.0%	NM
▼ Manazel Holding Co.	MANK.KW	9.8	0.73	0.00%	1.38	0.034	(0.000)	14.6	0.048	0.021	(13.3%)	1,284,367	43,663	50.4%	7.5%
▼ National Industries Group	NIND.KW	NM	0.80	5.65%	1.42	0.177	(0.001)	252.7	0.247	0.121	(26.6%)	2,940,310	521,452	42.1%	NM
▼ Warba Capital Holding Co.	WARBACAP.KW	NM	0.27	0.00%	0.70	0.047	(0.000)	2.3	0.070	0.042	(27.8%)	24,465	1,106	18.1%	NM
= Arabi Holding Group Co.	AGHC.KW	NM	1.23	0.00%	0.15	0.198	0.000	34.2	0.337	0.079	(27.7%)	0	0	3.1%	NM
▲ Privatization Holding Co.	KPPC.KW	NM	0.35	0.00%	0.79	0.045	0.003	27.6	0.059	0.037	(8.7%)	6,834,977	299,092	7.3%	NM
▼ Credit Rating & Collection Co.	TAHS.KW	NM	0.96	0.00%	NA	0.030	(0.002)	5.0	0.035	0.019	50.0%	500	15	0.2%	NM
= Egypt Kuwait Holding Co.	ECHK.KW	11.9	2.49	0.00%	0.15	0.365	0.000	373.9	0.500	0.318	(18.9%)	0	0	0.0%	20.9%
▲ GFH Financial Group	GFH.KW	18.5	0.99	7.87%	0.86	0.051	0.000	260.4	0.074	0.042	(26.0%)	268,941	13,736	1.6%	5.3%
▲ Inovest	INOV.KW	10.1	0.54	0.00%	0.72	0.078	0.001	23.5	0.080	0.044	22.2%	3,001,736	233,317	10.0%	5.4%
= Al Bareeq Holding	BAREEQ.KW	30.6	1.30	0.00%	0.03	0.079	0.000	59.7	0.110	0.079	(20.9%)	0	0	1.7%	4.3%
= Amar For Finance and Leasing Co.	AMARF.KW	NM	0.66	0.00%	0.07	0.056	0.000	11.2	0.064	0.037	47.4%	0	0	11.0%	NM
= Al-Manar Financing & Leasing Co.	ALMANAR.KW	NM	0.47	0.00%	0.53	0.049	0.000	15.1	0.060	0.037	(5.4%)	2	0	7.0%	NM
▲ Boursa Kuwait Securities Co	BOURSA.KW	20.8	7.24	0.00%	NA	1.180	0.042	236.9	1.210	0.990	NA	1,545,101	1,802,837	10.9%	34.8%
Financial Services		NM	0.93	3.38%				2,738.7			(1.1%)	157,452,072	14,720,445		NM

## Boursa Kuwait Daily Bulletin

Thursday, September 24, 2020

Company	Reuters Ticker	Valuation Multiples				Price (KWD)		MKT Cap (KWD Mn.)	52 Weeks High (KWD)	52 Weeks Low (KWD)	YTD-20 Return #	Daily Trading Data		YTD-20 Capital Turnover	ROE
		Trailing P/E (X)	Trailing P/BV (X)	Dividend Yield	Beta	Closing	DTD Change					Volume (Shrs.)	Value (KWD)		
▲ Automated Systems Co.	ASCK.KW	NM	0.60	0.00%	0.13	0.074	0.000	7.4	0.087	0.051	4.5%	1,004,841	75,160	5.9%	NM
<b>Technology</b>		<b>NM</b>	<b>0.60</b>	<b>0.00%</b>				<b>7.4</b>			<b>4.5%</b>	<b>1,004,841</b>	<b>75,160</b>		<b>NM</b>
= Shamal Az-Zour Al-Oula Power and Water Co.	AZNOULA.KW	30.0	4.81	0.00%	NA	0.335	0.000	368.5	0.500	0.297	N/A	6,923,744	2,322,312	33.0%	16.1%
<b>Utilities</b>		<b>30.0</b>	<b>4.81</b>	<b>0.00%</b>				<b>368.5</b>			<b>N/A</b>	<b>6,923,744</b>	<b>2,322,312</b>		<b>16.1%</b>
<b>Boursa Kuwait</b>		<b>28.3</b>	<b>1.45</b>	<b>3.46%</b>				<b>33,441.7</b>			<b>(7.99%)</b>	<b>442,568,390</b>	<b>67,460,381</b>		<b>5.1%</b>

### Year-to-Date 2020 Top Movers & Most Active Stocks

YTD Top % Gainers	Close (KWD)	Percent Change
Real Estate Asset Management Co.	0.204	132.1%
Arzan Financial Group For Fin. & Invest.	0.055	130.0%
Investors Holding Group Co.	0.018	122.5%
A'ayan Leasing & Investment Co.	0.097	107.9%
Gulf Investment House	0.105	63.0%
YTD Most Active by Volume	Close (KWD)	Volume (Shrs.)
Ahli United Bank - Bahrain	0.244	3,626,966,384
Investors Holding Group Co.	0.018	2,284,381,421
Kuwait Finance House	0.693	1,864,163,912
Arzan Financial Group For Fin. & Invest.	0.055	1,738,572,977
Gulf Petroleum Investment	0.019	1,734,380,888

YTD Top % Losers	Close (KWD)	Percent Change
IFA Hotels & Resorts Co.	0.024	(56.7%)
Jazeera Airways Co.	0.572	(48.0%)
Int'l Financial Advisors Co.	0.031	(42.3%)
Gulf Cement Co.	0.033	(39.7%)
ALAFCO Aviation Lease & Finance Co.	0.168	(38.2%)
YTD Most Active by Value	Close (KWD)	Value (KWD)
Kuwait Finance House	0.693	1,218,846,862
National Bank of Kuwait	0.894	926,862,048
Ahli United Bank - Bahrain	0.244	789,307,174
Zain	0.585	417,452,512
Agility (PWC Logistics)	0.678	335,862,885

\* Different Fiscal Year Company

### Disclaimer & Important Disclosures

Kamco Invest is authorized and fully regulated by the Capital Markets Authority ("CMA, Kuwait") and partially regulated by the Central Bank of Kuwait ("CBK").

This document is provided for informational purposes only. Nothing contained in this document constitutes investment, an offer to invest, legal, tax or other advice or guidance and should be disregarded when considering or making investment decisions. In preparing this document, Kamco Invest did not take into account the investment objectives, financial situation and particular needs of any particular person. Accordingly, before acting on this document, investors should independently evaluate the investments and strategies referred to herein and make their own determination of whether it is appropriate in light of their own financial circumstances and objectives. The entire content of this document is subject to copyright with all rights reserved. This research and the information contained herein may not be reproduced, distributed or transmitted in Kuwait or in any other jurisdiction to any other person or incorporated in any way into another document or other material without our prior written consent.

#### Analyst Certification

Each of the analysts identified in this report, if any and where applicable, certifies, with respect to the sector, companies or securities that the individual analyses, that (1) the views expressed in this report reflect his or her personal views about all of the subject companies and securities and (2) no part of his or her compensation was, is or will be directly or indirectly dependent on the specific recommendations or views expressed in this report.

#### Kamco Invest Ratings

Kamco Invest research is based on the analysis of regional and country economics, industries and company fundamentals. Kamco Invest company research reflects a long-term (12-month) target price for a company or stock. The ratings bands are:

\* **Outperform:** Target Price represents expected returns >= 10% in the next 12 months

\* **Neutral:** Target Price represents expected returns between -10% and +10% in the next 12 months

\* **Underperform:** Target Price represents an expected return of <-10% in the next 12 months

In certain circumstances, ratings may differ from those implied by a fair value target using the criteria above. Kamco Invest policy is to maintain up-to-date fair value targets on the companies under its coverage, reflecting any material changes to the analyst's outlook on a company. Share price volatility may cause a stock to move outside the rating range implied by Kamco Invest's fair value target. Analysts may not necessarily change their ratings if this happens, but are expected to disclose the rationale behind their view to Kamco Invest clients.

Any terms and conditions proposed by you which are in addition to or which conflict with this Disclaimer are expressly rejected by Kamco Invest and shall be of no force or effect. The information contained in this document is based on current trade, statistical and other public information we consider reliable. We do not represent or warrant that such information is fair, accurate or complete and it should not be relied upon as such. Kamco Invest has no obligation to update, modify or amend this document or to otherwise notify a recipient thereof in the event that any opinion, forecast or estimate set forth herein, changes or subsequently becomes inaccurate. The publication is provided for informational uses only and is not intended for trading purposes. The information on publications does not give rise to any legally binding obligation and/or agreement, including without limitation any obligation to update such information. You shall be responsible for conducting your own investigation and analysis of the information contained or referred to in this document and of evaluating the merits and risks involved in the securities forming the subject matter of this or other such document. Moreover, the provision of certain data/information in the publication may be subject to the terms and conditions of other agreements to which Kamco Invest is a party.

Nothing in this document should be construed as a solicitation or offer, or recommendation, to acquire or dispose of any investment or to engage in any other transaction, or to provide any investment advice or service. This document is directed at Professional Clients and not Retail Clients within the meaning of CMA rules. Any other persons in receipt of this document must not rely upon or otherwise act upon it. Entities and individuals

Kamco Investment Company (DIFC) Limited ("Kamco Invest DIFC"), Office 205, Level 2, Gate Village 1, Dubai International Financial Centre, a wholly owned subsidiary of Kamco Investment Company KSC (Public), is regulated by the Dubai Financial Services Authority (DFSA). Kamco Invest DIFC may only undertake the financial services activities that fall within the scope of its existing DFSA licence. The information in this document may be distributed by Kamco Invest DIFC on behalf of Kamco Investment Company KSC (Public). This document is intended for Professional Clients or Market Counterparties only as defined by the DFSA, and no other person should act upon it.

This document may not be distributed in Saudi Arabia except to such persons as are permitted under the Offers of Securities Regulations issued by the Capital Market Authority. The Capital Market Authority does not make any representation as to the accuracy or completeness of this document, and expressly disclaims any liability whatsoever for any loss arising from, or incurred in reliance upon, any part of this document. The recipients of this document hereby should conduct their own due diligence on the accuracy of the information relating to the contents of this document. If you do not understand the contents of this document you should consult an authorized financial advisor.

#### Risk Warnings

Any prices, valuations or forecasts are indicative and are not intended to predict actual results, which may differ substantially from those reflected. The value of an investment may go up as well as down. The value of and income from any investment may fluctuate from day to day as a result of changes in relevant economic markets (including, without limitation, foreseeable or unforeseeable changes in interest rates, foreign exchange rates, default rates, prepayment rates, political or financial conditions, etc.).

Past performance is not indicative of future results. Any opinions, estimates, valuations or projections (target prices and ratings in particular) are inherently imprecise and a matter of judgment. They are statements of opinion and not of fact, based on current expectations, estimates and projections, and rely on beliefs and assumptions. Actual outcomes and returns may differ materially from what is expressed or forecasted. There are no guarantees of future performance. Certain transactions, including those involving futures, options, and other derivatives, give rise to substantial risk and are not suitable for all investors. This document does not propose to identify or to suggest all of the risks (direct or indirect) which may be associated with the investments and strategies referred to herein.

#### Conflict of Interest

Kamco Invest and its affiliates provide full investment banking services, and they and their directors, officers and employees, may take positions which conflict with the views expressed in this document. Salespeople, traders, and other professionals of Kamco Invest may provide oral or written market commentary or trading strategies to our clients and our proprietary trading desks that reflect opinions that are contrary to the opinions expressed in this document. Our asset management area, our proprietary trading desks and investing businesses may make investment decisions that are inconsistent with the recommendations or views expressed in this document. Kamco Invest may have or seek transactions, including those involving futures, options, and other derivatives, give rise to substantial risk and are not suitable for all investors. This document does not propose to identify or to suggest all of the risks (direct or indirect) which may be associated with the investments and strategies referred to herein.

#### No Liability & Warranty

Kamco Invest makes neither implied nor expressed representations or warranties and, to the fullest extent permitted by applicable law, we hereby expressly disclaim any and all express, implied and statutory representations and warranties of any kind, including, without limitation, any warranty as to accuracy, timeliness, completeness, and fitness for a particular purpose and/or non-infringement. Kamco Invest will accept no liability in any event including (without limitation) your reliance on the information contained in this document, any negligence for any damages or loss of any kind, including (without limitation) direct, indirect, incidental, special or consequential damages, expenses or losses arising out of, or in connection with your use or inability to use this document, or in connection with any error, omission, defect, computer virus or system failure, or