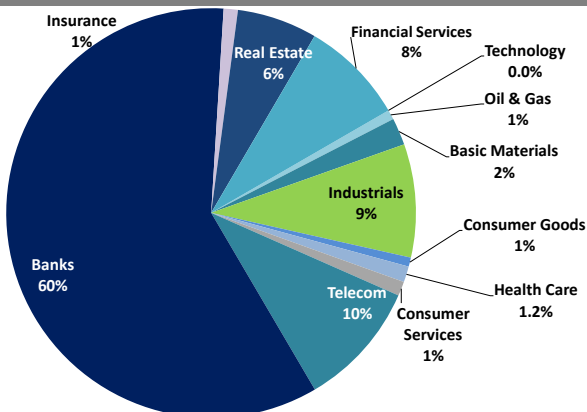


Boursa Kuwait Daily Report

September 23, 2020

Sector Weight by Market Cap



Market Capitalization - Sector Returns

	Market Cap. (KWD Mn)	DTD	DTD % Chg	MTD % Chg	YTD % Chg
Boursa Kuwait	33,531.6	▲	0.8%	7.0%	(7.7%)
Oil & Gas	251.3	▲	0.1%	4.0%	(2.6%)
Basic Materials	709.8	▲	0.0%	2.2%	(12.2%)
Industrials	2,960.3	▲	0.6%	7.5%	(10.0%)
Consumer Goods	241.1	▲	1.2%	(2.3%)	22.1%
Health Care	411.2	=	0.0%	0.0%	(6.3%)
Consumer Services	381.0	▼	(0.6%)	3.5%	(31.0%)
Telecommunications	3,293.5	▲	0.4%	0.3%	(3.7%)
Banks	19,714.5	▲	1.1%	7.0%	(10.4%)
Insurance	372.4	▲	1.4%	5.9%	7.2%
Real Estate	2,096.2	▲	0.6%	12.7%	(7.2%)
Financial Services	2,724.5	▲	0.6%	16.3%	(1.6%)
Technology	7.4	▲	2.2%	7.8%	4.0%
Utilities	368.5	▲	0.3%	4.7%	N/A

Top 10 Companies by Market Capitalization

Company Name	Market Cap. (Mn KWD)	P/E (X)	ROE* (%)
1- National Bank of Kuwait	6,158.3	20.3	9.8%
2- Kuwait Finance House	5,325.9	26.6	10.7%
3- Zain	2,535.7	12.5	16.6%
4- Ahli United Bank - Bahrain	2,385.7	12.1	16.6%
5- Boubyan Bank	1,969.2	38.7	10.3%
6- Agility (PWC Logistics)	1,374.6	22.5	5.5%
7- Commercial Bank of Kuwait	996.0	NM	NM
8- Mabane Co.	841.0	27.9	6.5%
9- Gulf Bank	704.1	13.7	8.6%
10- Ahli United Bank - Kuwait	625.9	14.9	9.7%
Total	22,916	20.26	10.2%

*: ROE is calculated based on TTM 1H-2020 net profit & shareholders' equity as of 30-June-20

Top Movers and Most Active Stocks

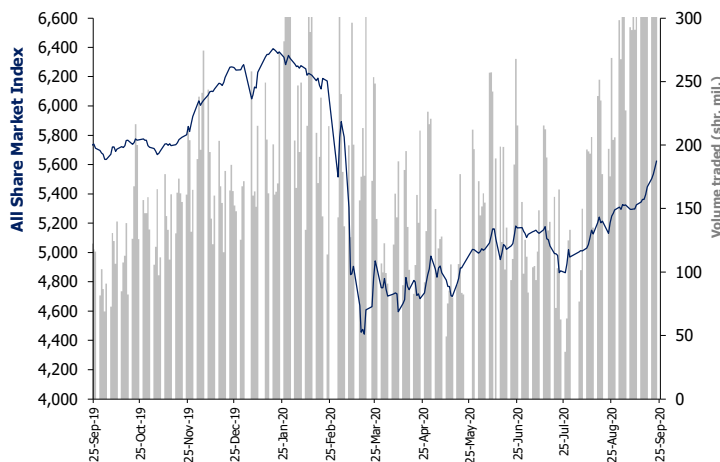
Today's Top % Gainers	Close (KWD)	Change (KWD)	Percent Change
Munshaat Real Estate Projects Co.	0.081	0.011	15.0%
Al Masaken Intl. Real Estate Dev. Co.	0.035	0.003	9.9%
Hilal Cement Co.	0.114	0.010	9.6%
Investors Holding Group Co.	0.018	0.001	7.1%
Al Salam Group Holding Co.	0.029	0.002	6.7%

Today's Top % Losers	Close (KWD)	Change (KWD)	Percent Change
Dar Al Thuraya Real Estate Co.	0.071	(0.008)	(9.6%)
Hayat Communications Co.	0.058	(0.006)	(9.5%)
National Co. for Consumer Industries	0.048	(0.003)	(5.3%)
Tijara Real Estate & Investment Co.	0.039	(0.002)	(4.7%)
Al Eid Food Co.	0.064	(0.003)	(4.6%)

Today's Most Active by Volume	Close (KWD)	Percent Change	Volume (Shares)
Investors Holding Group Co.	0.018	7.1%	72,003,817
A'ayan Leasing & Investment Co.	0.093	4.5%	55,494,639
Arzan Financial Group For Fin. & Invest.	0.055	(1.1%)	25,638,014
Sokouk Holding Co.	0.031	5.2%	23,052,118
Kuwait International Bank	0.198	4.2%	22,880,207

Market Breadth	▲ 69	▼ 47	= 58		
Benchmark Return	Closing Value	DTD Chg	DTD % Chg	MTD % Chg	YTD % Chg
Premier Market Index	6,240.58	61.9	1.0%	6.6%	(10.5%)
Main 50 Index	4,449.21	24.0	0.5%	6.4%	(10.8%)
Main Market Index	4,400.01	15.1	0.3%	5.1%	(10.4%)
All Share Market Index	5,624.39	46.6	0.8%	6.2%	(10.5%)
Market Cap (KWD Mn)	33,531.62	276.2	0.8%	7.0%	(7.7%)

Index Performance relative to Volume



Market Trading Data and Volatility

Trading Indicators	Today's Value	DTD Chg	DTD % Chg	Average Daily YTD 2020	Average Daily YTD 2019
Volume (Shrs Mn)	449.3	38.0	9.2%	194.3	88.6
Value Traded (KWD Mn)	67.5	(1.5)	(2.1%)	35.9	16.9
No. of Trades	15,342	532	3.59%	8,617	3,810

Today's Most Active by Value	Close (KWD)	Percent Change	Value (KWD)
Kuwait Finance House	0.694	1.8%	11,771,484
National Bank of Kuwait	0.899	1.0%	6,583,291
A'ayan Leasing & Investment Co.	0.093	4.5%	5,091,755
Kuwait International Bank	0.198	4.2%	4,428,520
Gulf Bank	0.231	2.7%	4,041,519

Boursa Kuwait - Premier Market

Wednesday, September 23, 2020

	Premier Market Stocks	Closing Price			Market Capitalization			Valuation Multiples				ROE	YTD-20 Price Return	YTD-20 Trading Indicators	
		KWD	DTD Chg. (KWD)	D-T-D Return	KWD Mn	Weight in Premier Index	Weight in Boursa Kuwait	P/E (X)	P/BV (X)	Yield	Beta			Volume (Mn Shrs)	Value (KWD Mn)
▲	National Bank of Kuwait	0.899	0.009	1.0%	6,158	24.8%	18.4%	20.3	2.00	3.7%	1.28	9.8%	(11.8%)	1,089.54	920.40
▲	Gulf Bank	0.231	0.006	2.7%	704	2.8%	2.1%	13.7	1.17	4.5%	1.13	8.6%	(23.8%)	1,249.07	280.13
▲	Kuwait International Bank	0.198	0.008	4.2%	224	0.9%	0.7%	29.3	0.87	3.0%	1.00	3.0%	(24.1%)	1,202.87	230.11
▲	Burgan Bank	0.213	0.006	2.9%	559	2.2%	1.7%	8.9	0.79	5.6%	1.05	8.8%	(29.9%)	411.37	90.10
▲	Kuwait Finance House	0.694	0.012	1.8%	5,326	21.4%	15.9%	26.6	2.86	2.6%	1.42	10.7%	(5.9%)	1,844.60	1,205.29
▲	Boubyan Bank	0.604	0.003	0.5%	1,969	7.9%	5.9%	38.7	3.97	1.3%	1.04	10.3%	6.5%	190.88	103.11
▲	Kuwait Projects Co. (Holding)	0.159	0.001	0.6%	318	1.3%	0.9%	5.4	1.47	6.2%	0.58	27.3%	(26.4%)	216.47	35.63
▲	Mabane Co.	0.761	0.003	0.4%	841	3.4%	2.5%	27.9	1.82	1.7%	1.10	6.5%	(10.9%)	204.64	134.54
▲	National Industries Group (Holding)	0.178	0.003	1.7%	254	1.0%	0.8%	NM	0.80	5.6%	1.42	NM	(26.1%)	598.02	108.57
▼	Boubyan Petrochemical Co.	0.568	(0.001)	(0.2%)	304	1.2%	0.9%	25.7	1.36	6.0%	0.73	5.3%	(15.0%)	72.43	40.90
▲	Qurain Petrochemicals Industries Co.	0.282	0.001	0.4%	310	1.2%	0.9%	12.0	0.73	5.4%	0.76	6.1%	(9.0%)	136.56	35.81
▲	Agility Public Warehousing Co.	0.678	0.007	1.0%	1,375	5.5%	4.1%	22.5	1.24	0.6%	1.47	5.5%	(4.7%)	509.97	332.99
▲	Mobile Telecommunications Co.	0.586	0.001	0.2%	2,536	10.2%	7.6%	12.5	2.07	5.6%	1.39	16.6%	(2.3%)	771.61	413.98
▼	Human Soft Holding Co.	2.710	(0.065)	(2.3%)	331	1.3%	1.0%	12.6	3.76	0.0%	0.47	29.9%	(10.0%)	43.38	119.68
▲	Ahli United Bank (B.S.C)	0.245	0.001	0.4%	2,386	9.6%	7.1%	12.1	2.01	7.4%	1.12	16.6%	(15.8%)	3,614.29	786.22
▲	Warba Bank	0.244	0.001	0.4%	384	1.5%	1.1%	NM	2.11	0.0%	0.99	NM	(6.8%)	641.45	138.77
▲	Mezzan Holding Co.	0.630	0.008	1.3%	196	0.8%	0.6%	30.4	1.78	2.3%	0.46	5.8%	26.0%	59.33	32.93
▲	Integrated Holding Co.	0.382	0.002	0.5%	84	0.3%	0.3%	31.8	1.38	7.9%	0.46	4.3%	(30.7%)	56.47	25.69
▲	Shamal Az-Zour Al-Oula Power and Water	0.335	0.001	0.3%	369	1.5%	1.1%	30.0	4.81	0.0%	NA	16.1%	NA	356.49	122.80
▲	Boursa Kuwait Securities Co.	1.138	0.022	2.0%	228	0.9%	0.7%	20.1	6.98	0.0%	NA	34.8%	NA	20.33	21.75
Subtotal- Premier Market Stocks		6,240.58	61.94	1.00%	24,856	100%	74%	19.8	1.95	3.54%		9.9%	-10.5%	13,289.76	5,179.39
Remaining of the Market					8,675		26%	NM	0.84	3.18%		-0.8%		20,518.97	1,075.76

Boursa Kuwait Daily Bulletin

Wednesday, September 23, 2020

Company	Reuters Ticker	Valuation Multiples				Price (KWD)		MKT Cap (KWD Mn.)	52 Weeks High (KWD)	52 Weeks Low (KWD)	YTD-20 Return #	Daily Trading Data		YTD-20 Capital Turnover	ROE	
		Trailing P/E (X)	Trailing P/BV (X)	Dividend Yield	Beta	Closing	DTD Change					Volume (Shrs.)	Value (KWD)			
▼ Senergy Holding Co.	SENE.KW	NM	0.36	0.00%	1.13	0.018	(0.000)	3.6	0.027	0.014	(17.4%)	4,981	87	28.1%	NM	
= Independent Petroleum Group	IPGK.KW		14.1	0.98	5.62%	0.28	0.430	0.000	96.6	0.497	0.375	(10.8%)	18,333	7,883	0.3%	7.0%
= National Petroleum Services Co.	NAPS.KW		12.7	2.97	6.17%	0.23	1.100	0.000	110.0	1.389	0.903	(6.0%)	0	0	0.3%	23.4%
▼ The Energy House Co.	ENER.KW	NM	0.67	0.00%	0.94	0.021	(0.000)	15.7	0.036	0.014	(8.3%)	18,050	364	6.0%	NM	
▲ Gulf Petroleum Investment	GPIK.KW	NM	0.14	0.00%	1.06	0.020	0.000	5.8	0.023	0.012	(3.0%)	11,521,481	224,971	582.6%	NM	
▲ Burgan Co. for Drilling, Tdg. & Maint. *	ABAR.KW		14.9	0.30	0.00%	NA	0.081	0.001	19.6	0.098	0.060	1.0%	350	28	0.2%	2.0%
Oil & Gas			29.9	0.91	4.86%				251.3			(2.6%)	11,563,195	233,333		3.1%
▼ Kuwait Foundry Co.	KFDC.KW		39.3	0.92	5.88%	0.66	0.255	(0.005)	18.4	0.510	0.192	(23.9%)	38,107	9,577	2.5%	2.3%
▼ Boubyan Petrochemicals Co.*	BPCC.KW		25.7	1.36	5.99%	0.73	0.568	(0.001)	303.8	0.800	0.395	(15.0%)	375,882	213,497	13.5%	5.3%
= Al Kout for Industrial Projects Co.	ALKK.KW		27.8	2.84	6.50%	0.02	0.769	0.000	77.6	0.850	0.769	(9.5%)	0	0	0.0%	10.2%
▲ Qurain Petrochemical Industries Co. *	ALQK.KW		12.0	0.73	5.37%	0.76	0.282	0.001	310.0	0.323	0.163	(9.0%)	487,648	137,163	12.4%	6.1%
Basic Materials			17.4	1.02	5.77%				709.8			(12.2%)	901,637	360,237		5.9%
▲ Specialities Group Holding Co.	SPEC.KW		11.9	0.36	0.00%	0.40	0.065	0.000	10.6	0.078	0.050	(15.7%)	171,727	10,995	29.6%	3.0%
= Kuwait Cement Co.	KCEM.KW		NM	0.87	2.35%	0.47	0.207	0.000	151.8	0.270	0.144	(15.9%)	983,013	202,079	9.9%	NM
▲ Gulf Cable & Electrical Ind. Co.	CABL.KW		36.3	0.93	5.57%	0.91	0.718	0.016	150.7	0.742	0.390	47.1%	767,507	548,733	45.6%	2.6%
▲ Heavy Eng'g Ind. & Shipbuilding Co.	SHIP.KW		6.2	1.01	8.00%	0.60	0.375	0.003	67.6	0.419	0.298	(7.4%)	567,746	212,728	25.0%	16.2%
▲ Kuwait Portland Cement Co.	PCEM.KW		NM	1.28	5.12%	0.46	0.782	0.014	78.4	1.200	0.683	(20.4%)	76,461	58,823	6.1%	0.9%
= Shuaiba Industrial Co.	PAPE.KW		25.1	0.73	3.79%	0.12	0.130	0.000	13.1	0.180	0.122	(16.1%)	0	0	0.6%	2.9%
= Metal & Recycling Co.	MRCK.KW		NM	0.48	0.00%	0.20	0.041	0.000	4.8	0.070	0.020	(18.4%)	0	0	1.8%	NM
= ACICO Industries Co.	ACIC.KW		NM	0.41	0.00%	0.37	0.103	0.000	31.1	0.139	0.081	(22.6%)	150,192	15,041	6.1%	NM
▲ Hilal Cement Co.	HCKK.KW		NM	1.08	0.00%	0.13	0.114	0.010	11.6	0.126	0.063	14.0%	11,580	1,320	0.5%	NM
▼ National Industries Co.	NIBM.KW		NM	0.72	6.26%	0.15	0.154	(0.002)	57.4	0.173	0.143	(6.7%)	117,607	18,108	0.4%	NM
▼ Equipment Holding Co.	EQUI.KW		NM	0.37	0.00%	1.03	0.016	(0.000)	2.2	0.024	0.013	(26.5%)	141,000	2,288	26.0%	NM
▼ National Co. for Consumer Industries	NCCI.KW		52.8	0.52	0.00%	NA	0.048	(0.003)	4.3	0.100	0.010	(12.6%)	335,110	16,262	1.1%	1.0%
▲ Salbookh Trading Co.	SALB.KW		NM	0.53	0.00%	0.61	0.036	0.000	3.7	0.051	0.026	(29.1%)	195,514	6,759	26.2%	NM
▲ Agility (PWC Logistics)	AGLT.KW		22.5	1.24	0.61%	1.47	0.678	0.007	1,374.6	0.748	0.357	(4.7%)	2,973,350	2,009,217	25.2%	5.5%
▲ Educational Holding Group*	EDUK.KW		9.2	1.70	19.24%	0.46	0.309	0.003	75.8	0.475	0.228	(29.6%)	20,000	6,172	0.9%	18.6%
▲ National Cleaning Co.	CLEA.KW		71.0	0.40	0.00%	0.82	0.057	0.000	14.3	0.088	0.047	(17.2%)	139,440	7,944	23.1%	0.6%
▲ Kuwait & Gulf Link Transport Co.	KGLK.KW		NM	0.23	0.00%	0.76	0.046	0.001	13.3	0.077	0.042	(30.9%)	655,722	30,012	14.4%	NM
▼ Kuwait Co. For Process Plant Const. & Cont.	KCPC.KW		6.7	1.25	7.09%	0.47	0.310	(0.001)	34.2	0.338	0.175	28.7%	74,135	22,843	37.4%	18.7%
▼ Humansoft Holding Co.	HUMN.KW		12.6	3.76	0.00%	0.47	2.710	(0.065)	331.3	3.470	1.944	(10.0%)	170,489	465,113	35.5%	29.9%
= Gulf Franchising Co.	GFCI.KW		NM	1.24	0.00%	NA	0.050	0.000	2.0	0.148	0.001	(33.0%)	0	0	0.6%	NM
▼ National Shooting Co.	SHOOTING.KW		NM	0.26	0.00%	1.23	0.014	(0.000)	4.0	0.018	0.007	42.0%	4,882,784	68,328	93.3%	NM
▲ Combined Group Contracting Co.	CGCK.KW		NM	0.73	0.00%	0.59	0.171	0.001	29.3	0.251	0.138	(31.2%)	1,953,797	334,562	106.2%	NM
= United Projects Group	UPAC.KW		60.4	1.28	0.00%	NA	0.465	0.000	91.7	0.512	0.367	(9.2%)	0	0	0.0%	2.1%
▲ ALAFCO Aviation Lease & Finance Co.*	ALAF.KW		27.2	0.51	4.71%	0.85	0.170	0.003	161.9	0.278	0.138	(37.5%)	5,764,548	976,818	31.6%	1.9%
▼ Mubarrad Holding Co.	MBRD.KW		15.3	0.52	7.73%	0.94	0.064	(0.000)	10.4	0.089	0.049	(27.6%)	1,108,298	70,168	86.5%	3.4%
= KGL Logistics Co.	LOGK.KW		NM	0.20	0.00%	0.77	0.027	0.000	20.1	0.043	0.023	(26.5%)	0	0	26.6%	NM
▲ Integrated holding Co.	INTEGRATED.KW		31.8	1.38	7.85%	0.46	0.382	0.002	84.0	0.600	0.342	(30.7%)	215,301	82,201	25.7%	4.3%
= Sharjah Cement Co.	SCEM.KW		NM	0.22	0.00%	0.22	0.042	0.000	25.7	0.064	0.042	0.0%	0	0	0.0%	NM
▲ Gulf Cement Co.	GCEM.KW		NM	0.38	0.00%	0.21	0.036	0.001	29.2	0.060	0.029	(35.2%)	46,394	1,591	2.1%	NM
= Umm Al-Qaiwain General Investments Co.	QIC.KW		NM	0.52	6.94%	0.16	0.072	0.000	26.1	0.096	0.052	7.9%	40,000	2,828	0.2%	0.4%
▲ Fujairah Cement Industries Co.	FCEM.KW		NM	0.15	0.00%	0.48	0.036	0.001	12.6	0.052	0.029	(21.1%)	27,827	985	6.0%	NM
= Ras-Al-Khaimah for White Cement Co.	RKWC.KW		67.2	0.54	7.69%	0.11	0.065	0.000	32.5	0.080	0.055	0.0%	0	0	0.0%	0.8%
Industrials			54.8	0.96	2.37%				2,960.3			(10.0%)	21,589,542	5,171,916		1.7%

Boursa Kuwait Daily Bulletin

Wednesday, September 23, 2020

Company	Reuters Ticker	Valuation Multiples				Price (KWD)		MKT Cap (KWD Mn.)	52 Weeks High (KWD)	52 Weeks Low (KWD)	YTD-20 Return #	Daily Trading Data		YTD-20 Capital Turnover	ROE
		Trailing P/E (X)	Trailing P/BV (X)	Dividend Yield	Beta	Closing	DTD Change					Volume (Shrs.)	Value (KWD)		
= Palms Agro Production Co.	PAPK.KW	16.6	0.59	0.00%	0.24	0.065	0.000	3.4	0.065	0.025	61.7%	0	0	0.7%	3.6%
▲ Livestock Transport & Trading Co.	CATT.KW	24.1	0.96	0.00%	0.27	0.186	0.002	40.3	0.200	0.152	6.3%	167,411	30,827	12.4%	4.0%
= Danah Alsafat Foodstuff Co.	DANK.KW	NM	0.63	0.00%	0.74	0.012	0.000	1.3	0.029	0.010	(25.3%)	0	0	97.4%	NM
▲ Mezzan Holding Co.	MEZZ.KW	30.4	1.78	2.34%	0.46	0.630	0.008	196.1	0.665	0.428	26.0%	535,518	336,770	19.1%	5.8%
Consumer Goods		NM	1.51	1.90%		241.1		241.1			22.1%	702,929	367,597		NM
= Advanced Technology Co.	ATCK.KW	37.5	1.61	1.59%	0.00	0.627	0.000	94.1	0.900	0.580	(22.6%)	0	0	0.0%	4.3%
= Yiacco Medical Co.	YIAC.KW	NM	6.55	0.00%	NA	0.707	0.000	12.1	0.777	0.672	0.1%	0	0	0.0%	NM
= Al-Maidan Clinic For Oral Health Services Co.	MIDAN.KW	51.1	7.58	0.00%	0.00	1.220	0.000	305.0	1.220	1.220	0.0%	0	0	0.0%	14.8%
Health Care		49.2	4.09	0.36%		411.2		411.2			(6.3%)	0	0		8.3%
= Kuwait National Cinema Co.	KCIN.KW	32.0	1.02	4.45%	0.27	0.725	0.000	73.3	1.050	0.600	(30.8%)	0	0	1.0%	3.2%
= Kuwait Hotels Co.	KHOT.KW	NM	1.35	0.00%	NA	0.090	0.000	5.2	0.101	0.069	(10.3%)	0	0	0.1%	NM
▼ Sultan Center Food Products Co.	SCFK.KW	17.7	0.69	0.00%	0.52	0.056	(0.001)	32.1	0.060	0.036	6.7%	50,000	2,773	7.2%	3.9%
= Kuwait Cable Vision Co.	KWTV.KW	NM	0.52	0.00%	0.21	0.014	0.000	0.5	0.026	0.012	0.0%	0	0	0.0%	NM
▼ IFA Hotels & Resorts Co.*	IFAH.KW	NM	1.77	0.00%	0.23	0.024	(0.001)	15.2	0.062	0.021	(56.5%)	8,825,041	210,701	12.5%	NM
= Oula Fuel Marketing Co.	OULA.KW	31.8	0.71	0.00%	0.46	0.110	0.000	44.5	0.134	0.095	(13.4%)	100,062	11,001	4.5%	2.2%
▼ Kuwait Resorts Co.	MUNK.KW	16.7	0.38	0.00%	0.69	0.053	(0.001)	11.0	0.060	0.038	(9.4%)	742,131	38,929	48.0%	2.3%
▲ Jazeera Airways Co.	JAZK.KW	NM	4.39	0.00%	0.70	0.575	0.001	115.0	1.110	0.372	(47.7%)	182,129	104,706	24.2%	NM
▼ Soor Fuel Marketing Co.	SOOR.KW	20.4	0.68	0.00%	0.46	0.109	(0.002)	44.1	0.129	0.096	(12.8%)	20,599	2,266	4.8%	3.3%
= Future Kid Entertainment and R.E Co.	KIDK.KW	NM	0.55	0.00%	0.03	0.080	0.000	9.3	0.110	0.069	(9.3%)	0	0	0.6%	NM
= Al Rai Media Group Co.	ALRA.KW	NM	0.86	0.00%	0.26	0.037	0.000	8.6	0.045	0.031	(2.4%)	0	0	0.3%	NM
▼ Jiyad Holding Co	JIYAD.KW	11.7	0.37	0.00%	0.63	0.041	(0.000)	14.4	0.047	0.029	5.6%	255,100	10,479	16.7%	3.2%
▼ Al Eid Food Co.	ALEID.KW	5.4	0.42	0.00%	NA	0.064	(0.003)	7.7	0.080	0.038	(2.8%)	88,000	5,554	5.6%	7.8%
Consumer Services		NM	0.95	0.86%		381.0		381.0			(31.0%)	10,263,062	386,408		NM
▲ Zain	ZAIN.KW	12.5	2.07	5.63%	1.39	0.586	0.001	2,535.7	0.604	0.407	(2.3%)	6,093,801	3,575,919	17.8%	16.6%
▲ National Mobile Telecom Co.	OORE.KW	21.6	0.58	8.02%	0.46	0.620	0.005	312.5	0.835	0.550	(25.1%)	189,452	117,268	3.3%	2.7%
▼ AAN digital services Co.	AAN.KW	NM	0.36	0.00%	1.32	0.012	(0.000)	10.5	0.021	0.009	(11.1%)	7,416,291	89,775	166.6%	NM
▲ Kuwait Telecommunication Co.	STC.KW	10.9	2.08	5.81%	0.58	0.860	0.015	429.5	0.870	0.680	9.1%	27,515	23,455	2.3%	19.2%
▼ Hayat Communications Co.	HAYK.KW	7.1	0.50	0.00%	1.20	0.058	(0.006)	5.3	0.098	0.030	(22.9%)	8,346	506	6.4%	7.0%
Telecommunications		12.8	1.63	5.85%		3,293.5		3,293.5			(3.7%)	13,735,405	3,806,923		12.8%
▲ National Bank of Kuwait	NBKK.KW	20.3	2.00	3.66%	1.28	0.899	0.009	6,158.3	1.062	0.654	(11.8%)	7,340,396	6,583,291	15.9%	9.8%
▲ Gulf Bank	GBKK.KW	13.7	1.17	4.53%	1.13	0.231	0.006	704.1	0.317	0.180	(23.8%)	17,672,955	4,041,519	41.0%	8.6%
= Commercial Bank of Kuwait	CBKK.KW	NM	1.47	0.00%	0.39	0.500	0.000	996.0	0.555	0.465	(5.5%)	0	0	1.4%	NM
▼ Ahli Bank of Kuwait	ABKK.KW	NM	0.55	3.58%	0.62	0.194	(0.004)	314.1	0.310	0.156	(24.2%)	5,044,914	984,576	8.1%	0.3%
= Ahli United Bank - Kuwait	BKME.KW	14.9	1.45	4.47%	0.85	0.289	0.000	625.9	0.330	0.225	(11.3%)	801,587	231,186	5.9%	9.7%
▲ Kuwait International Bank	KIBK.KW	29.3	0.87	3.04%	1.00	0.198	0.008	224.3	0.271	0.162	(24.1%)	22,880,207	4,428,520	106.2%	3.0%
▲ Burgan Bank	BURG.KW	8.9	0.79	5.62%	1.05	0.213	0.006	559.1	0.324	0.175	(29.9%)	8,638,659	1,820,756	15.7%	8.8%
▲ Kuwait Finance House	KFH.KW	26.6	2.86	2.59%	1.42	0.694	0.012	5,325.9	0.761	0.473	(5.9%)	17,031,231	11,771,484	24.0%	10.7%
▲ Boubyan Bank	BOUK.KW	38.7	3.97	1.32%	1.04	0.604	0.003	1,969.2	0.638	0.380	6.5%	1,991,849	1,200,047	5.9%	10.3%
▲ Warba Bank	WARB.KW	NM	2.11	0.00%	0.99	0.244	0.001	384.3	0.279	0.164	(6.8%)	2,819,143	687,192	40.7%	NM
▲ Ahli United Bank - Bahrain	AUBK.KW	12.1	2.01	7.36%	1.12	0.245	0.001	2,385.7	0.311	0.160	(15.8%)	14,182,935	3,480,222	37.1%	16.6%
Banks		21.9	1.96	3.42%		19,714.5		19,714.5			(10.4%)	98,403,876	35,228,794		9.0%

Boursa Kuwait Daily Bulletin

Wednesday, September 23, 2020

Company	Reuters Ticker	Valuation Multiples				Price (KWD)		MKT Cap (KWD Mn.)	52 Weeks High (KWD)	52 Weeks Low (KWD)	YTD-20 Return #	Daily Trading Data			YTD-20 Capital Turnover	ROE
		Trailing P/E (X)	Trailing P/BV (X)	Dividend Yield	Beta	Closing	DTD Change					Volume (Shrs.)	Value (KWD)	YTD-20		
= Kuwait Insurance Co.	KINS.KW	6.4	0.82	7.72%	NA	0.370	0.000	71.8	0.387	0.300	12.1%	0	0	1.2%	12.8%	
▲ Gulf Insurance Group	GINS.KW	8.0	1.10	5.60%	0.08	0.649	0.029	121.4	0.680	0.550	(1.7%)	2,164	1,317	0.1%	13.6%	
= Ahleiah Insurance Co.	AINS.KW	8.0	0.81	5.65%	0.12	0.414	0.000	86.9	0.445	0.367	1.6%	0	0	1.4%	10.1%	
▼ Warba Insurance Co.	WINS.KW	12.8	0.40	8.74%	0.36	0.079	(0.000)	13.9	0.094	0.051	29.8%	7,650	601	2.0%	3.1%	
= Kuwait Reinsurance Co.	KWRE.KW	8.7	0.79	2.18%	0.02	0.211	0.000	43.0	0.211	0.126	52.9%	0	0	0.1%	9.1%	
= First Takaful Insurance Co.	FTIK.KW	NM	0.47	0.00%	0.33	0.040	0.000	4.2	0.056	0.031	4.2%	1,030	40	2.6%	NM	
▼ Wethaq Takaful Insurance Co.	WETH.KW	NM	0.21	0.00%	0.38	0.023	(0.001)	2.5	0.035	0.018	(8.0%)	1,495,800	34,581	16.5%	NM	
= Bahrain Kuwait Insurance Co.	BKIK.KW	12.0	0.94	7.50%	0.02	0.200	0.000	28.6	0.220	0.190	0.0%	0	0	0.0%	7.8%	
Insurance		9.5	0.84	5.79%				372.4			7.2%	1,506,644	36,539		8.8%	
▲ Sokouk Holding Co.	SHCK.KW	NM	0.45	0.00%	1.17	0.031	0.002	18.1	0.040	0.022	(13.4%)	23,052,118	692,042	47.7%	NM	
▲ Kuwait Real Estate Co.	KREK.KW	25.9	0.74	0.00%	0.99	0.099	0.001	93.8	0.115	0.070	(5.7%)	746,747	73,355	20.3%	2.8%	
= United Real Estate Co.	UREK.KW	NM	0.33	0.00%	0.38	0.051	0.000	60.6	0.063	0.045	(16.8%)	0	0	0.6%	NM	
▲ National Real Estate Co.	NREK.KW	25.0	0.40	0.00%	1.14	0.075	0.001	107.5	0.090	0.058	(13.6%)	7,039,715	533,175	18.1%	1.6%	
▲ Salhia Real Estate Co.	SREK.KW	6.1	1.22	6.07%	0.34	0.397	0.006	203.6	0.460	0.328	(4.8%)	670,398	262,842	5.7%	20.2%	
= Tamdeen Real Estate Co.	TAMK.KW	NM	0.81	1.83%	0.10	0.265	0.000	114.5	0.343	0.241	(17.4%)	9,997	2,599	0.6%	NM	
▼ Ajjal Real Estate Entertainment Co.	AREC.KW	19.7	0.21	0.00%	0.50	0.138	(0.006)	26.8	0.213	0.115	(19.9%)	1,142,500	161,126	4.5%	1.1%	
▲ Al Massaleh Real Estate Co.	MREC.KW	NM	0.42	0.00%	0.24	0.037	0.002	8.6	0.040	0.026	(0.8%)	285,000	10,211	1.7%	NM	
▲ Arab Real Estate Co.	ARAB.KW	NM	0.27	0.00%	1.18	0.026	0.000	13.5	0.033	0.020	(10.5%)	820,600	21,380	24.3%	NM	
▼ AL-Enma'a Real Estate Co.*	ENMA.KW	22.3	0.50	0.00%	0.64	0.050	(0.000)	22.7	0.079	0.037	(19.5%)	2,268,028	113,318	32.2%	2.3%	
▲ Mabaneer Co.	MABK.KW	27.9	1.82	1.73%	1.10	0.761	0.003	841.0	0.878	0.434	(10.9%)	1,238,496	941,866	18.5%	6.5%	
= Injazzat Real Estate Development Co.	INJA.KW	NM	0.52	0.00%	0.20	0.079	0.000	27.3	0.091	0.061	(1.3%)	0	0	1.1%	NM	
▲ Investors Holding Group Co.	INVK.KW	NM	0.89	0.00%	1.18	0.018	0.001	11.2	0.032	0.007	125.0%	72,003,817	1,257,174	355.8%	NM	
= The Commercial Real Estate Co.	TIJK.KW	19.5	0.64	4.77%	0.53	0.103	0.000	182.3	0.111	0.083	10.1%	6,911	712	8.4%	3.3%	
▲ Sanam Real Estate Co.	SANK.KW	NM	0.44	0.00%	0.38	0.032	0.001	4.0	0.043	0.027	(19.0%)	632,697	18,949	3.1%	NM	
▲ A'ayan Real Estate Co.	AYRE.KW	NM	0.36	0.00%	0.57	0.061	0.001	25.1	0.080	0.048	(17.2%)	1,381,095	83,499	4.2%	NM	
= Aqar Real Estate Investment Co.	AQAR.KW	6.1	0.52	7.18%	NA	0.060	0.000	14.8	0.089	0.058	(21.3%)	0	0	1.8%	8.5%	
▼ Kuwait Real Estate Holding Co.	ALAQ.KW	NM	0.61	0.00%	0.52	0.026	(0.000)	4.9	0.034	0.022	(10.5%)	23,400	603	8.4%	NM	
▼ MAZAYA Holding Co.	MAZA.KW	NM	0.52	0.00%	0.99	0.055	(0.000)	38.1	0.067	0.047	(6.6%)	710,190	39,062	16.4%	NM	
▼ Tijara Real Estate & Investment Co.	TIJA.KW	13.9	0.37	5.17%	0.29	0.039	(0.002)	14.3	0.055	0.034	(22.6%)	2,800	112	0.3%	2.6%	
▼ Al TAMEER Real Estate Investment Co.	AMAR.KW	NM	0.33	0.00%	0.94	0.020	(0.000)	4.7	0.034	0.013	(26.0%)	388,503	7,607	91.0%	NM	
= Arkan Al-Kuwait Real Estate Co. *	ARKK.KW	9.2	0.64	9.36%	0.22	0.086	0.000	21.5	0.100	0.076	(3.8%)	0	0	9.0%	6.9%	
= Al-Argan International Real Estate Co.	ARGK.KW	NM	0.30	0.00%	0.43	0.093	0.000	24.5	0.135	0.060	(11.8%)	0	0	0.4%	NM	
= Abyaar Real Estate Development Co.	ABYR.KW	NM	0.21	0.00%	1.20	0.007	0.000	8.1	0.014	0.005	(6.4%)	1,549,703	11,304	61.7%	NM	
▲ Munshaat Real Estate Projects Co.	MUNS.KW	NM	0.63	0.00%	0.68	0.081	0.011	25.9	0.090	0.045	8.8%	192,470	13,937	7.2%	NM	
▲ First Dubai For Real Estate Development	FIRST.KW	NM	0.57	0.00%	1.44	0.042	0.001	42.4	0.055	0.027	19.1%	768,053	32,568	30.5%	0.6%	
▲ Kuwait Business Town Real Estate Co.	KBTK.KW	12.6	0.28	0.00%	1.06	0.031	0.001	19.4	0.046	0.022	(29.5%)	1,733,223	53,732	43.8%	2.2%	
= Real Estate Asset Management Co.	REAM.KW	NM	1.48	0.00%	0.08	0.204	0.000	22.4	0.204	0.060	132.1%	0	0	0.1%	NM	
▼ MENA Real Estate Co. *	MENK.KW	NM	0.20	0.00%	0.98	0.029	(0.000)	3.9	0.043	0.021	(30.9%)	1,679,298	48,369	99.2%	NM	
= Al Mudon International Real Estate Co.	ALMK.KW	NM	0.12	0.00%	0.86	0.016	0.000	1.6	0.029	0.015	(35.1%)	0	0	23.7%	NM	
= Real Estate Trade Centers Co.	MARA.KW	17.9	0.18	0.00%	0.33	0.031	0.000	4.3	0.050	0.018	33.2%	0	0	28.4%	1.0%	
▲ Kuwait Remal Real Estate Co.	REMAK.KW	NM	0.34	0.00%	0.86	0.022	0.000	6.7	0.027	0.013	(9.8%)	184,001	3,968	20.0%	NM	
▲ Mashaer Holding Co.	MASHAER.KW	NM	0.55	8.10%	0.53	0.062	0.002	11.1	0.086	0.048	(20.5%)	1,514,985	93,506	33.1%	NM	
= Effect Real Estate Co.	EFFECT.KW	NM	0.29	0.00%	0.44	0.021	0.000	1.7	N/A	N/A	0.0%	0	0	0.0%	NM	
= Ajwan Gulf Real Estate Co.	AJWN.KW	NM	0.19	0.00%	0.60	0.011	0.000	2.2	0.016	0.009	(28.7%)	0	0	116.7%	NM	
▲ Al Masaken Intl. Real Estate Dev. Co.	MASKN.KW	NM	0.41	0.00%	0.16	0.035	0.003	3.5	0.074	0.026	(21.6%)	50	2	1.0%	0.4%	
= Dalqan Real Estate Co.	DALQ.KW	62.7	2.37	0.00%	NA	0.318	0.000	15.7	0.385	0.333	(10.1%)	0	0	0.0%	3.8%	
▼ Dar Al Thuraya Real Estate Co.	THURY.KW	NM	0.67	0.00%	NA	0.071	(0.008)	10.4	0.190	0.040	1.6%	130,500	9,422	2.5%	0.2%	
= Osos Holding Group Co.	OSOS.KW	NM	0.82	7.41%	0.25	0.090	0.000	9.5	0.118	0.083	(10.0%)	0	0	7.2%	NM	
▲ KFH Capital REIT	BAITAKREIT.KW	NA	NA	0.00%	NA	1.016	0.001	24.0	1.131	0.978	NA	27,718	28,072	5.1%	NA	
Real Estate		NM	0.77	2.06%				2,096.2			(7.2%)	120,203,013	4,514,511		NM	

Boursa Kuwait Daily Bulletin

Wednesday, September 23, 2020

Company	Reuters Ticker	Valuation Multiples				Price (KWD)		MKT Cap (KWD Mn.)	52 Weeks High (KWD)	52 Weeks Low (KWD)	YTD-20 Return #	Daily Trading Data			YTD-20 Capital Turnover	ROE
		Trailing P/E (X)	Trailing P/BV (X)	Dividend Yield	Beta	Closing	DTD Change					Volume (Shrs.)	Value (KWD)	YTD-20		
▲ Kuwait Investment Co.	KINV.KW	NM	0.76	11.38%	0.72	0.131	0.004	72.2	0.172	0.095	(12.7%)	3,411,007	440,204	26.7%	NM	
▼ Commercial Facilities Co.	FACI.KW	NM	0.70	9.21%	0.52	0.185	(0.001)	99.3	0.235	0.179	(14.7%)	259,700	47,812	4.6%	NM	
= Int'l Financial Advisors Co.	IFIN.KW	NM	0.99	0.00%	1.31	0.031	0.000	8.2	0.060	0.027	(42.3%)	0	0	32.0%	NM	
= National Investment Co.	NINV.KW	NM	0.78	5.77%	1.24	0.142	0.000	124.4	0.158	0.080	2.9%	4,343,607	619,881	38.9%	NM	
▲ Kuwait Projects Co.(Holding)	KPRO.KW	5.4	1.47	6.19%	0.58	0.159	0.001	318.0	0.225	0.147	(26.4%)	3,017,877	479,417	10.8%	27.3%	
▼ Coast Invest. & Development Co.	KOAS.KW	NM	0.43	0.00%	1.32	0.035	(0.000)	21.6	0.045	0.026	(13.5%)	473,040	16,470	18.9%	NM	
▼ The Securities House Co.	SECH.KW	NM	0.51	0.00%	1.14	0.045	(0.001)	24.8	0.063	0.027	(1.8%)	3,557,525	160,020	65.3%	NM	
▼ Arzan Financial Group For Fin. & Invest.	ARZA.KW	NM	0.49	0.00%	1.03	0.055	(0.001)	43.8	0.064	0.022	130.4%	25,638,014	1,397,273	215.4%	NM	
▲ Kuwait Financial Centre	MARKZ.KW	NM	0.48	5.96%	0.77	0.084	0.002	40.3	0.121	0.070	(20.8%)	1,417,386	118,390	27.0%	NM	
▼ Kuwait & M.E. Financial Inv. Co.	KMEF.KW	4.0	1.30	0.00%	0.61	0.115	(0.003)	30.3	0.138	0.063	28.5%	114,211	12,987	20.3%	32.2%	
▲ First Investment Co.	OLAK.KW	NM	0.44	0.00%	1.01	0.030	0.000	19.6	0.045	0.022	(12.5%)	853,254	25,547	176.7%	NM	
▼ Al-Mal Investment Co.	MALK.KW	NM	0.39	0.00%	1.20	0.009	(0.000)	2.9	0.016	0.008	(7.1%)	4,882,601	44,962	97.0%	NM	
▲ Gulf Investment House	GIHK.KW	NM	1.81	0.00%	0.99	0.100	0.000	65.0	0.108	0.038	55.6%	908,549	90,211	22.8%	NM	
▲ A'ayan Leasing & Investment Co.	AAYS.KW	NM	1.18	0.00%	1.24	0.093	0.004	75.8	0.102	0.032	99.4%	55,494,639	5,091,755	185.8%	NM	
▼ Bayan Investment Co.	BAYK.KW	NM	0.52	0.00%	0.84	0.045	(0.001)	17.7	0.053	0.031	18.1%	60,668	2,672	6.0%	NM	
▼ Osoul Investment Co.	OSUL.KW	NM	0.75	13.57%	0.44	0.081	(0.000)	12.6	0.121	0.070	7.3%	83,351	6,716	26.4%	NM	
▼ Kuwait Finance & Investment Co.	KFSK.KW	NM	0.39	0.00%	0.30	0.045	(0.000)	14.5	0.058	0.038	(9.1%)	11,025	477	9.5%	NM	
▲ Kamco Investment Co.	KAMC.KW	NM	0.52	6.78%	0.38	0.074	0.002	25.3	0.111	0.060	(18.0%)	1,789,548	131,057	15.5%	NM	
▼ National International Holding Co.	NIHK.KW	7.4	0.36	0.00%	0.66	0.061	(0.000)	13.8	0.081	0.051	(17.1%)	963,383	57,786	4.7%	4.8%	
▲ UniCap Investment and Finance	UNICAP.KW	NM	0.63	0.00%	0.65	0.048	0.001	11.5	0.057	0.035	(12.9%)	339,608	16,070	12.0%	NM	
▼ Al Madar Finance & Investment Co.	MADR.KW	17.5	0.85	5.61%	0.34	0.086	(0.003)	18.4	0.148	0.062	(7.1%)	1,033,619	90,098	30.9%	4.9%	
= Al-Deera Holding	DEER.KW	NM	1.92	0.00%	0.82	0.016	0.000	3.2	0.022	0.011	(20.0%)	0	0	6.1%	NM	
▲ Al Salam Group Holding Co.	SAGH.KW	32.7	0.25	0.00%	1.27	0.029	0.002	7.7	0.033	0.018	(2.7%)	13,451,621	377,447	251.0%	0.8%	
▼ Ekkittab Holding Co.	EKTT.KW	NM	0.36	0.00%	1.00	0.015	(0.000)	4.7	0.017	0.010	(0.7%)	114,800	1,719	47.5%	NM	
▲ Al Madina For Finance & Investment Co.	MADI.KW	NM	0.45	0.00%	1.22	0.013	0.000	5.3	0.019	0.009	(12.7%)	8,814,484	114,924	167.2%	NM	
▲ NOOR Financial Investment Co.	NOOR.KW	8.0	1.24	3.44%	1.24	0.174	0.002	71.9	0.184	0.076	46.2%	1,343,228	230,493	53.7%	15.4%	
= Tamdeen Investment Co.	TAMI.KW	NM	0.55	3.85%	0.33	0.310	0.000	107.0	0.400	0.199	(10.1%)	11,000	3,413	0.3%	NM	
▲ Kuwait Syrian Holding Co.	KSHC.KW	NM	0.24	0.00%	0.73	0.026	0.001	4.6	0.043	0.022	(17.5%)	487,589	12,458	25.5%	NM	
▼ Asiya Capital Investment Co.	ASIYA.KW	NM	0.37	0.00%	0.52	0.033	(0.000)	26.3	0.041	0.029	(19.6%)	363,923	11,694	1.7%	NM	
▲ Gulf North Africa Holding Co.	GNAH.KW	NM	0.80	0.00%	1.09	0.060	0.001	8.9	0.062	0.052	(4.0%)	60,000	3,519	5.0%	NM	
= Amwal International Investment Co.	AMWA.KW	NM	0.68	0.00%	0.39	0.036	0.000	6.4	0.053	0.030	18.7%	20	1	0.1%	NM	
▲ Alimtiq Investment Group	ALIMK.KW	NM	0.56	0.00%	0.95	0.098	0.002	110.6	0.137	0.071	(22.5%)	5,620,054	544,773	40.7%	NM	
= Tamkeen Holding Co.	TAMKE.KW	NM	0.05	0.00%	NA	0.005	0.000	0.3	N/A	N/A	0.0%	0	0	0.0%	NM	
▼ Manazel Holding Co.	MANK.KW	9.9	0.74	0.00%	1.38	0.034	(0.000)	14.8	0.048	0.021	(12.5%)	2,258,099	77,350	50.1%	7.5%	
▲ National Industries Group	NIND.KW	NM	0.80	5.62%	1.42	0.178	0.003	254.2	0.247	0.121	(26.1%)	14,228,999	2,534,975	41.9%	NM	
= Warba Capital Holding Co.	WARBACAP.KW	NM	0.28	0.00%	0.70	0.047	0.000	2.3	0.070	0.042	(27.3%)	0	0	18.0%	NM	
= Arabi Holding Group Co.	AGHC.KW	NM	1.23	0.00%	0.15	0.198	0.000	34.2	0.337	0.079	(27.7%)	0	0	3.1%	NM	
▼ Privatization Holding Co.	KPPC.KW	NM	0.33	0.00%	0.79	0.042	(0.000)	25.6	0.059	0.037	(15.2%)	918,524	37,878	6.2%	NM	
▼ Credit Rating & Collection Co.	TAHS.KW	NM	1.01	0.00%	NA	0.032	(0.001)	5.2	0.035	0.019	57.5%	1,751	55	0.2%	NM	
▼ Egypt Kuwait Holding Co.	ECHK.KW	11.9	2.49	0.00%	0.15	0.365	(0.005)	373.9	0.500	0.318	(18.9%)	444	162	0.0%	20.9%	
▲ GFH Financial Group	GFH.KW	18.5	0.99	7.90%	0.86	0.051	0.000	259.4	0.074	0.042	(26.3%)	163,233	8,275	1.6%	5.3%	
▲ Inovest	INOV.KW	9.9	0.53	0.00%	0.72	0.077	0.001	23.1	0.077	0.044	20.5%	2,515,108	193,342	9.0%	5.4%	
= Al Bareeq Holding	BAREEQ.KW	30.6	1.30	0.00%	0.03	0.079	0.000	59.7	0.110	0.079	(20.9%)	0	0	1.7%	4.3%	
= Amar For Finance and Leasing Co.	AMARF.KW	NM	0.66	0.00%	0.07	0.056	0.000	11.2	0.064	0.037	47.4%	0	0	11.0%	NM	
▲ Al-Manar Financing & Leasing Co.	ALMANAR.KW	NM	0.47	0.00%	0.53	0.049	0.002	15.1	0.060	0.037	(5.4%)	1,000	49	7.0%	NM	
▲ Boursa Kuwait Securities Co	BOURSA.KW	20.1	6.98	0.00%	NA	1.138	0.022	228.5	1.210	0.990	NA	1,543,546	1,740,407	10.1%	34.8%	
Financial Services		NM	0.92	3.39%				2,724.5			(1.6%)	160,550,035	14,742,736		NM	

Boursa Kuwait Daily Bulletin

Wednesday, September 23, 2020

Company	Reuters Ticker	Valuation Multiples			Price (KWD)			MKT Cap (KWD Mn.)	52 Weeks High (KWD)	52 Weeks Low (KWD)	YTD-20 Return #	Daily Trading Data		YTD-20 Capital Turnover	ROE
		Trailing P/E (X)	Trailing P/BV (X)	Dividend Yield	Beta	Closing	DTD Change					Volume (Shrs.)	Value (KWD)		
▲ Automated Systems Co.	ASCK.KW	NM	0.60	0.00%	0.13	0.074	0.002	7.4	0.086	0.051	4.0%	2,517,366	186,284	4.9%	NM
Technology		NM	0.60	0.00%				7.4			4.0%	2,517,366	186,284		NM
▲ Shamal Az-Zour Al-Oula Power and Water Co.	AZNOULA.KW	30.0	4.81	0.00%	NA	0.335	0.001	368.5	0.500	0.297	N/A	7,355,665	2,460,124	32.4%	16.1%
Utilities		30.0	4.81	0.00%				368.5			N/A	7,355,665	2,460,124		16.1%
Boursa Kuwait		28.4	1.46	3.45%				33,531.6			(7.74%)	449,292,369	67,495,402		5.1%

Year-to-Date 2020 Top Movers & Most Active Stocks

YTD Top % Gainers	Close (KWD)	Percent Change
Real Estate Asset Management Co.	0.204	132.1%
Arzan Financial Group For Fin. & Invest.	0.055	130.4%
Investors Holding Group Co.	0.018	125.0%
A'ayan Leasing & Investment Co.	0.093	99.4%
Palms Agro Production Co.	0.065	61.7%

YTD Most Active by Volume	Close (KWD)	Volume (Shrs.)
Ahli United Bank - Bahrain	0.245	3,614,288,661
Investors Holding Group Co.	0.018	2,216,223,755
Kuwait Finance House	0.694	1,844,598,546
Arzan Financial Group For Fin. & Invest.	0.055	1,729,518,357
Gulf Petroleum Investment	0.020	1,726,912,649

YTD Top % Losers	Close (KWD)	Percent Change
IFA Hotels & Resorts Co.	0.024	(56.5%)
Jazeera Airways Co.	0.575	(47.7%)
Int'l Financial Advisors Co.	0.031	(42.3%)
ALAFCO Aviation Lease & Finance Co.	0.170	(37.5%)
Gulf Cement Co.	0.036	(35.2%)

YTD Most Active by Value	Close (KWD)	Value (KWD)
Kuwait Finance House	0.694	1,205,285,971
National Bank of Kuwait	0.899	920,404,233
Ahli United Bank - Bahrain	0.245	786,220,829
Zain	0.586	413,984,149
Agility (PWC Logistics)	0.678	332,986,634

* Different Fiscal Year Company

Disclaimer & Important Disclosures

Kamco Invest is authorized and fully regulated by the Capital Markets Authority ("CMA, Kuwait") and partially regulated by the Central Bank of Kuwait ("CBK").

This document is provided for informational purposes only. Nothing contained in this document constitutes investment, an offer to invest, legal, tax or other advice or guidance and should be disregarded when considering or making investment decisions. In preparing this document, Kamco Invest did not take into account the investment objectives, financial situation and particular needs of any particular person. Accordingly, before acting on this document, investors should independently evaluate the investments and strategies referred to herein and make their own determination of whether it is appropriate in light of their own financial circumstances and objectives. The entire content of this document is subject to copyright with all rights reserved. This research and the information contained herein may not be reproduced, distributed or transmitted in Kuwait or in any other jurisdiction to any other person or incorporated in any way into another document or other material without our prior written consent.

Analyst Certification
Each of the analysts identified in this report, if any and where applicable, certifies, with respect to the sector, companies or securities that the individual analyses, that (1) the views expressed in this report reflect his or her personal views about all of the subject companies and securities and (2) no part of his or her compensation was, is or will be directly or indirectly dependent on the specific recommendations or views expressed in this report.

Kamco Invest Ratings
Kamco Invest research is based on the analysis of regional and country economics, industries and company fundamentals. Kamco Invest company research reflects a long-term (12-month) target price for a company or stock. The ratings bands are:
* **Outperform:** Target Price represents expected returns >= 10% in the next 12 months
* **Neutral:** Target Price represents expected returns between -10% and +10% in the next 12 months
* **Underperform:** Target Price represents an expected return of <-10% in the next 12 months
In certain circumstances, ratings may differ from those implied by the criteria above. Kamco Invest policy is to maintain up-to-date fair value targets on the companies under its coverage, reflecting any material changes to the analyst's outlook on a company. Share price volatility may cause a stock to move outside the rating range implied by Kamco Invest's fair value target. Analysts may not necessarily change their ratings if this happens, but are expected to disclose the rationale behind their view to Kamco Invest clients.

Any terms and conditions proposed by you which are in addition to or which conflict with this Disclaimer are expressly rejected by Kamco Invest and shall be of no force or effect. The information contained in this document is based on current trade, statistical and other public information we consider reliable. We do not represent or warrant that such information is fair, accurate or complete and it should not be relied upon as such. Kamco Invest has no obligation to update, modify or amend this document or to otherwise notify a recipient thereof in the event that any opinion, forecast or estimate set forth herein, changes or subsequently becomes inaccurate. The publication is provided for informational uses only and is not intended for trading purposes. The information on publications does not give rise to any legally binding obligation and/or agreement, including without limitation any obligation to update such information. You shall be responsible for conducting your own investigation and analysis of the information contained or referred to in this document and of evaluating the merits and risks involved in the securities forming the subject matter of this or other such document. Moreover, the provision of certain data/information in the publication may be subject to the terms and conditions of other agreements to which Kamco Invest is a party.

Nothing in this document should be construed as a solicitation or offer, or recommendation, to acquire or dispose of any investment or to engage in any other transaction, or to provide any investment advice or service. This document is directed at Professional Clients and not Retail Clients within the meaning of CMA rules. Any other persons in receipt of this document must not rely upon or otherwise act upon it. Entities and individuals

Kamco Investment Company (DIFC) Limited ("Kamco Invest DIFC"), Office 205, Level 2, Gate Village 1, Dubai International Financial Centre, a wholly owned subsidiary of Kamco Investment Company KSC (Public), is regulated by the Dubai Financial Services Authority (DFSA). Kamco Invest DIFC may only undertake the financial services activities that fall within the scope of its existing DFSA licence. The information in this document may be distributed by Kamco Invest DIFC on behalf of Kamco Investment Company KSC (Public). This document is intended for Professional Clients or Market Counterparties only as defined by the DFSA, and no other person should act upon it.

This document may not be distributed in Saudi Arabia except to such persons as are permitted under the Offers of Securities Regulations issued by the Capital Market Authority. The Capital Market Authority does not make any representation as to the accuracy or completeness of this document, and expressly disclaims any liability whatsoever for any loss arising from, or incurred in reliance upon, any part of this document. The recipients of this document hereby should conduct their own due diligence on the accuracy of the information relating to the contents of this document. If you do not understand the contents of this document you should consult an authorized financial advisor.

Risk Warnings
Any prices, valuations or forecasts are indicative and are not intended to predict actual results, which may differ substantially from those reflected. The value of an investment may go up as well as down. The value of and income from any investment may fluctuate from day to day as a result of changes in relevant economic markets (including, without limitation, foreseeable or unforeseeable changes in interest rates, foreign exchange rates, default rates, prepayment rates, political or financial conditions, etc.).

Past performance is not indicative of future results. Any opinions, estimates, valuations or projections (target prices and ratings in particular) are inherently imprecise and a matter of judgment. They are statements of opinion and not of fact, based on current expectations, estimates and projections, and rely on beliefs and assumptions. Actual outcomes and returns may differ materially from what is expressed or forecasted. There are no guarantees of future performance. Certain transactions, including those involving futures, options, and other derivatives, give rise to substantial risk and are not suitable for all investors. This document does not propose to identify or to suggest all of the risks (direct or indirect) which may be associated with the investments and strategies referred to herein.

Conflict of Interest
Kamco Invest and its affiliates provide full investment banking services, and they and their directors, officers and employees, may take positions which conflict with the views expressed in this document. Salespeople, traders, and other professionals of Kamco Invest may provide oral or written market commentary or trading strategies to our clients and our proprietary trading desks that reflect opinions that are contrary to the opinions expressed in this document. Our asset management area, our proprietary trading desks and investing businesses may make investment decisions that are inconsistent with the recommendations or views expressed in this document. Kamco Invest may have or seek investment banking or other business relationships for which it will receive compensation from the companies that are the subject of this document. Facts and views presented in this document have not been reviewed by, and may not reflect information known to, professionals in other Kamco Invest business areas, including investment banking personnel. United Gulf Bank, Bahrain owns majority of Kamco Invest's shareholding and this ownership may create, or may create the appearance of, conflicts of interest.

No Liability & Warranty
Kamco Invest makes neither implied nor expressed representations or warranties and, to the fullest extent permitted by applicable law, we hereby expressly disclaim any and all express, implied and statutory representations and warranties of any kind, including, without limitation, any warranty as to accuracy, timeliness, completeness, and fitness for a particular purpose and/or non-infringement. Kamco Invest will accept no liability in any event including (without limitation) your reliance on the information contained in this document, any negligence for any damages or loss of any kind, including (without limitation) direct, indirect, incidental, special or consequential damages, expenses or losses arising out of, or in connection with your use or inability to use this document, or in connection with any error, omission, defect, computer virus or system failure, or