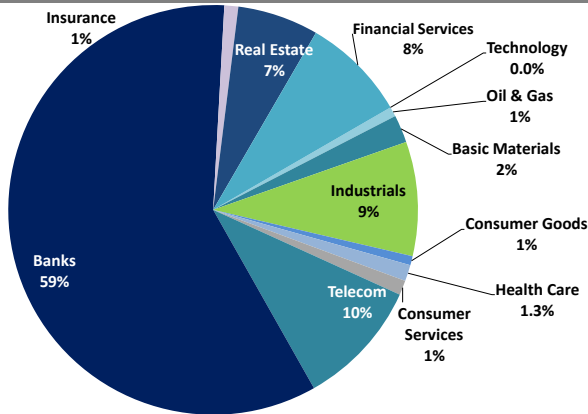


Boursa Kuwait Daily Report

September 21, 2020

Sector Weight by Market Cap



Top 10 Companies by Market Capitalization

Company Name	Market Cap. (Mn KWD)	P/E (X)	ROE* (%)
1- National Bank of Kuwait	6,028.2	19.9	9.8%
2- Kuwait Finance House	5,111.0	25.5	10.7%
3- Zain	2,522.7	12.4	16.6%
4- Ahli United Bank - Bahrain	2,337.0	11.8	16.6%
5- Boubyan Bank	1,956.2	38.4	10.3%
6- Agility (PWC Logistics)	1,352.3	22.1	5.5%
7- Commercial Bank of Kuwait	996.0	NM	NM
8- Mabane Co.	839.9	27.8	6.5%
9- Gulf Bank	685.8	13.3	8.6%
10- Ahli United Bank - Kuwait	628.1	15.0	9.7%
Total	22,457	19.85	10.2%

*: ROE is calculated based on TTM 1H-2020 net profit & shareholders' equity as of 30-June-20

Top Movers and Most Active Stocks

Today's Top % Gainers	Close (KWD)	Change (KWD)	Percent Change
AL-Enma'a Real Estate Co.	0.051	0.005	10.4%
Amwal International Investment Co.	0.036	0.003	9.9%
Tijara Real Estate & Investment Co.	0.041	0.003	8.8%
Munshaat Real Estate Projects Co.	0.070	0.005	8.4%
Real Estate Trade Centers Co.	0.031	0.002	6.6%




Today's Top % Losers	Close (KWD)	Change (KWD)	Percent Change
Dar Al Thuraya Real Estate Co.	0.077	(0.013)	(14.6%)
Al Bareeq Holding	0.079	(0.008)	(9.6%)
The Energy House Co.	0.021	(0.001)	(5.0%)
Al Masaken Intl. Real Estate Dev. Co.	0.031	(0.002)	(4.8%)
Senergy Holding Co.	0.018	(0.001)	(4.8%)

Today's Most Active by Volume	Close (KWD)	Percent Change	Volume (Shares)
Investors Holding Group Co.	0.016	5.8%	150,268,605
Sokouk Holding Co.	0.028	4.1%	48,138,015
A'ayan Leasing & Investment Co.	0.088	(0.8%)	41,179,945
Gulf Petroleum Investment	0.020	1.0%	21,277,406
Kuwait Finance House	0.666	1.8%	19,343,028

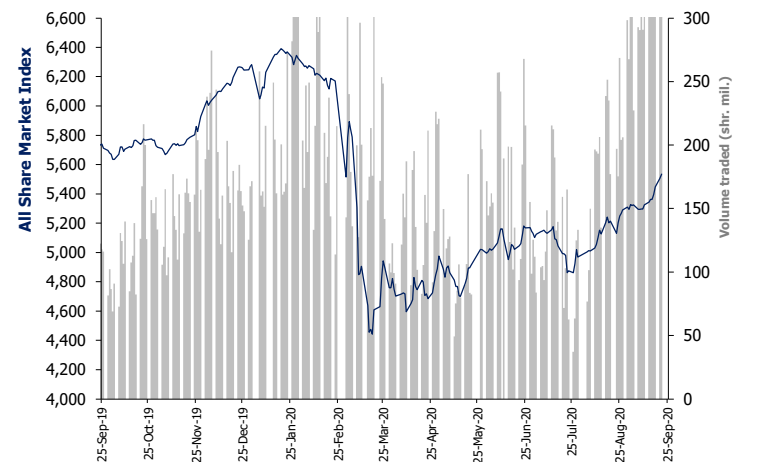
Source: Boursa Kuwait, Kamco Invest Research

Market Capitalization - Sector Returns

	Market Cap. (KWD Mn)	DTD ▲	DTD % Chg	MTD % Chg	YTD % Chg
Boursa Kuwait	32,996.6	▲	0.5%	5.3%	(9.2%)
Oil & Gas	250.1	▼	(0.6%)	3.5%	(3.0%)
Basic Materials	710.7	▲	1.0%	2.3%	(12.0%)
Industrials	2,942.7	▲	1.0%	6.9%	(10.6%)
Consumer Goods	237.4	▲	0.1%	(3.8%)	20.3%
Health Care	411.2	=	0.0%	0.0%	(6.3%)
Consumer Services	377.9	▼	(0.0%)	2.7%	(31.5%)
Telecommunications	3,268.7	▼	(0.1%)	(0.4%)	(4.4%)
Banks	19,273.8	▲	0.6%	4.6%	(12.4%)
Insurance	362.8	▼	(0.8%)	3.1%	4.4%
Real Estate	2,085.2	▲	2.1%	12.1%	(7.7%)
Financial Services	2,700.4	▼	(0.2%)	15.3%	(2.4%)
Technology	7.2	▲	4.5%	5.4%	1.7%
Utilities	368.5	▼	-0.9%	4.7%	N/A

Market Breadth	 64	 49	 61		
Benchmark Return	Closing	DTD	DTD	MTD	YTD
	Value	Chg	% Chg	% Chg	% Chg
Premier Market Index	6,116.12	41.0	0.7%	4.5%	(12.3%)
Main 50 Index	4,425.26	7.8	0.2%	5.8%	(11.3%)
Main Market Index	4,378.94	6.0	0.1%	4.6%	(10.8%)
All Share Market Index	5,533.73	29.6	0.5%	4.5%	(11.9%)
Market Cap (KWD Mn)	32,996.57	173.0	0.5%	5.3%	(9.2%)

Index Performance relative to Volume



Market Trading Data and Volatility

Trading Indicators	Today's Value	DTD Chg	DTD % Chg	Average Daily YTD 2020	Average Daily YTD 2019
Volume (Shrs Mn)	526.1	96.5	22.5%	191.6	88.6
Value Traded (KWD Mn)	58.1	5.5	10.4%	35.6	16.9
No. of Trades	15,435	1,146	8.02%	8,541	3,810

Today's Most Active by Value	Close (KWD)	Percent Change	Value (KWD)
Kuwait Finance House	0.666	1.8%	12,771,986
A'ayan Leasing & Investment Co.	0.088	(0.8%)	3,676,670
National Bank of Kuwait	0.880	0.1%	3,366,545
Ahli United Bank - Bahrain	0.240	(0.4%)	3,158,943
Zain	0.583	(0.2%)	2,747,906

Boursa Kuwait - Premier Market

Monday, September 21, 2020

	Premier Market Stocks	Closing Price			Market Capitalization			Valuation Multiples				ROE	YTD-20 Price Return	YTD-20 Trading Indicators	
		KWD	DTD Chg. (KWD)	D-T-D Return	KWD Mn	Weight in Premier Index	Weight in Boursa Kuwait	P/E (X)	P/BV (X)	Yield	Beta			Volume (Mn Shrs)	Value (KWD Mn)
▲	National Bank of Kuwait	0.880	0.001	0.1%	6,028	24.7%	18.3%	19.9	1.96	3.7%	1.28	9.8%	(13.6%)	1,074.38	906.88
=	Gulf Bank	0.225	0.000	0.0%	686	2.8%	2.1%	13.3	1.14	4.6%	1.13	8.6%	(25.7%)	1,213.93	272.18
▲	Kuwait International Bank	0.189	0.002	1.1%	214	0.9%	0.6%	28.0	0.83	3.2%	0.99	3.0%	(27.6%)	1,166.15	223.06
=	Burgan Bank	0.207	0.000	0.0%	543	2.2%	1.6%	8.7	0.77	5.8%	1.05	8.8%	(31.9%)	399.54	87.62
▲	Kuwait Finance House	0.666	0.012	1.8%	5,111	21.0%	15.5%	25.5	2.74	2.7%	1.42	10.7%	(9.7%)	1,804.37	1,177.88
▲	Boubyan Bank	0.600	0.005	0.8%	1,956	8.0%	5.9%	38.4	3.95	1.3%	1.04	10.3%	5.8%	187.60	101.14
=	Kuwait Projects Co. (Holding)	0.155	0.000	0.0%	310	1.3%	0.9%	5.2	1.43	6.3%	0.57	27.3%	(28.2%)	209.62	34.55
▲	Mabane Co.	0.760	0.031	4.3%	840	3.4%	2.5%	27.8	1.82	1.7%	1.10	6.5%	(11.0%)	201.69	132.31
▲	National Industries Group (Holding)	0.177	0.001	0.6%	253	1.0%	0.8%	NM	0.80	5.6%	1.42	NM	(26.6%)	576.21	104.70
▲	Boubyan Petrochemical Co.	0.569	0.007	1.2%	304	1.2%	0.9%	25.7	1.36	6.0%	0.73	5.3%	(14.8%)	71.78	40.53
▲	Qurain Petrochemicals Industries Co.	0.282	0.003	1.1%	310	1.3%	0.9%	12.0	0.73	5.4%	0.76	6.1%	(9.0%)	135.40	35.49
▲	Agility Public Warehousing Co.	0.667	0.013	2.0%	1,352	5.6%	4.1%	22.1	1.22	0.6%	1.47	5.5%	(6.2%)	500.75	326.80
▼	Mobile Telecommunications Co.	0.583	(0.001)	(0.2%)	2,523	10.4%	7.6%	12.4	2.06	5.7%	1.39	16.6%	(2.8%)	759.92	407.15
▼	Human Soft Holding Co.	2.819	(0.039)	(1.4%)	345	1.4%	1.0%	13.1	3.92	0.0%	0.47	29.9%	(6.4%)	42.53	117.36
▼	Ahli United Bank (B.S.C)	0.240	(0.001)	(0.4%)	2,337	9.6%	7.1%	11.8	1.97	7.5%	1.12	16.6%	(17.5%)	3,578.02	777.40
▼	Warba Bank	0.243	(0.001)	(0.4%)	383	1.6%	1.2%	NM	2.10	0.0%	0.99	NM	(7.2%)	632.19	136.53
▼	Mezzan Holding Co.	0.618	(0.001)	(0.2%)	192	0.8%	0.6%	29.9	1.75	2.4%	0.46	5.8%	23.6%	58.45	32.37
▲	Integrated Holding Co.	0.383	0.003	0.8%	84	0.3%	0.3%	31.9	1.39	7.8%	0.46	4.3%	(30.5%)	56.03	25.52
▼	Shamal Az-Zour Al-Oula Power and Water	0.335	(0.003)	(0.9%)	369	1.5%	1.1%	30.0	4.81	0.0%	NA	16.1%	NA	344.09	118.65
▲	Boursa Kuwait Securities Co.	1.106	0.006	0.5%	222	0.9%	0.7%	19.5	6.79	0.0%	NA	34.8%	NA	17.33	18.38
Subtotal- Premier Market Stocks		6,116.12	41.01	0.68%	24,362	100%	74%	19.4	1.92	3.61%		9.9%	-11.9%	13,030.00	5,076.52
Remaining of the Market					8,635		26%	(110.6)	0.84	3.20%		-0.8%		19,918.10	1,042.19

Source: Kamco Research

Boursa Kuwait Daily Bulletin

Monday, September 21, 2020

Company	Reuters Ticker	Valuation Multiples				Price (KWD)		MKT Cap (KWD Mn.)	52 Weeks High (KWD)	52 Weeks Low (KWD)	YTD-20 Return #	Daily Trading Data		YTD-20 Capital Turnover	ROE
		Trailing P/E (X)	Trailing P/BV (X)	Dividend Yield	Beta	Closing	DTD Change					Volume (Shrs.)	Value (KWD)		
▼ Senergy Holding Co.	SENE.KW	NM	0.36	0.00%	1.14	0.018	(0.001)	3.6	0.027	0.014	(17.8%)	108,183	1,947	28.1%	NM
= Independent Petroleum Group	IPGK.KW	14.1	0.98	5.62%	0.28	0.430	0.000	96.6	0.497	0.375	(10.8%)	0	0	0.3%	7.0%
= National Petroleum Services Co.	NAPS.KW	12.7	2.97	6.17%	0.23	1.100	0.000	110.0	1.389	0.903	(6.0%)	0	0	0.3%	23.4%
▼ The Energy House Co.	ENER.KW	NM	0.67	0.00%	0.94	0.021	(0.001)	15.7	0.036	0.014	(8.3%)	178,225	3,733	5.9%	NM
▲ Gulf Petroleum Investment	GPIK.KW	NM	0.14	0.00%	1.07	0.020	0.000	5.8	0.023	0.012	(2.0%)	21,277,406	421,305	575.0%	NM
▼ Burgan Co. for Drilling, Tdg. & Maint. *	ABAR.KW	13.9	0.28	0.00%	NA	0.076	(0.002)	18.4	0.098	0.060	(5.2%)	4,214	320	0.2%	2.0%
Oil & Gas		29.8	0.91	4.88%				250.1			(3.0%)	21,568,028	427,305		3.1%
= Kuwait Foundry Co.	KFDC.KW	40.1	0.94	5.77%	0.66	0.260	0.000	18.8	0.510	0.192	(22.4%)	0	0	2.4%	2.3%
▲ Boubyan Petrochemicals Co.*	BPCC.KW	25.7	1.36	5.98%	0.73	0.569	0.007	304.3	0.800	0.395	(14.8%)	220,143	125,295	13.4%	5.3%
= Al Kout for Industrial Projects Co.	ALKK.KW	27.8	2.84	6.50%	0.02	0.769	0.000	77.6	0.850	0.769	(9.5%)	0	0	0.0%	10.2%
▲ Qurain Petrochemical Industries Co. *	ALQK.KW	12.0	0.73	5.37%	0.76	0.282	0.003	310.0	0.323	0.163	(9.0%)	996,775	279,053	12.3%	6.1%
Basic Materials		17.4	1.03	5.77%				710.7			(12.0%)	1,216,918	404,348		5.9%
▼ Specialities Group Holding Co.	SPEC.KW	12.0	0.36	0.00%	0.40	0.065	(0.001)	10.7	0.078	0.050	(15.2%)	784,934	51,360	29.3%	3.0%
▼ Kuwait Cement Co.	KCEM.KW	NM	0.87	2.36%	0.47	0.206	(0.001)	151.1	0.270	0.144	(16.3%)	1,266,650	260,807	9.6%	NM
▲ Gulf Cable & Electrical Ind. Co.	CABL.KW	34.9	0.89	5.80%	0.91	0.690	0.013	144.9	0.742	0.390	41.4%	1,772,229	1,222,879	44.8%	2.6%
▲ Heavy Eng'g Ind. & Shipbuilding Co.	SHIP.KW	6.2	1.00	8.02%	0.60	0.374	0.001	67.4	0.419	0.298	(7.7%)	194,000	72,331	24.5%	16.2%
▲ Kuwait Portland Cement Co.	PCEM.KW	NM	1.27	5.16%	0.46	0.775	0.007	77.7	1.208	0.683	(21.1%)	53,727	41,273	5.9%	0.9%
= Shuaiba Industrial Co.	PAPE.KW	25.1	0.73	3.79%	0.12	0.130	0.000	13.1	0.180	0.122	(16.1%)	0	0	0.6%	2.9%
= Metal & Recycling Co.	MRCK.KW	NM	0.48	0.00%	0.20	0.041	0.000	4.8	0.070	0.020	(18.4%)	0	0	1.8%	NM
▼ ACICO Industries Co.	ACIC.KW	NM	0.41	0.00%	0.37	0.104	(0.001)	31.4	0.139	0.081	(21.8%)	65,656	6,861	6.0%	NM
= Hilal Cement Co.	HCKK.KW	NM	1.03	0.00%	0.12	0.109	0.000	11.1	0.126	0.063	9.0%	0	0	0.5%	NM
= National Industries Co.	NIBM.KW	NM	0.73	6.18%	0.15	0.156	0.000	58.1	0.173	0.143	(5.5%)	0	0	0.4%	NM
▼ Equipment Holding Co.	EQUI.KW	NM	0.39	0.00%	1.03	0.017	(0.000)	2.3	0.024	0.013	(22.4%)	442,070	7,343	25.9%	NM
= National Co. for Consumer Industries	NCCI.KW	55.8	0.55	0.00%	NA	0.051	0.000	4.6	0.100	0.010	(7.7%)	0	0	0.7%	1.0%
= Salbookh Trading Co.	SALB.KW	NM	0.52	0.00%	0.61	0.035	0.000	3.7	0.051	0.026	(29.9%)	120,505	4,105	26.0%	NM
▲ Agility (PWC Logistics)	AGLT.KW	22.1	1.22	0.62%	1.47	0.667	0.013	1,352.3	0.748	0.357	(6.2%)	3,403,110	2,242,698	24.7%	5.5%
▼ Educational Holding Group*	EDUK.KW	9.1	1.69	19.36%	0.46	0.307	(0.001)	75.3	0.475	0.228	(30.1%)	4,769	1,458	0.9%	18.6%
▲ National Cleaning Co.	CLEA.KW	69.6	0.39	0.00%	0.82	0.056	0.000	14.0	0.088	0.047	(18.8%)	465,814	26,593	22.9%	0.6%
▲ Kuwait & Gulf Link Transport Co.	KGLK.KW	NM	0.22	0.00%	0.76	0.045	0.001	13.1	0.077	0.042	(32.2%)	590,908	26,453	14.0%	NM
▼ Kuwait Co. For Process Plant Const. & Cont.	KPCP.KW	6.8	1.26	7.02%	0.47	0.313	(0.002)	34.5	0.338	0.175	29.9%	61,600	19,235	37.2%	18.7%
▼ Humansoft Holding Co.	HUMN.KW	13.1	3.92	0.00%	0.47	2.819	(0.039)	344.6	3.470	1.944	(6.4%)	101,384	287,286	34.8%	29.9%
= Gulf Franchising Co.	GFCI.KW	NM	1.24	0.00%	NA	0.050	0.000	2.0	0.148	0.001	(33.0%)	0	0	0.6%	NM
▲ National Shooting Co.	SHOOTING.KW	NM	0.26	0.00%	1.23	0.014	0.000	4.0	0.018	0.007	41.0%	6,031,381	86,472	91.1%	NM
▼ Combined Group Contracting Co.	CGCK.KW	NM	0.73	0.00%	0.59	0.171	(0.001)	29.3	0.251	0.138	(31.2%)	2,032,040	345,374	103.8%	NM
= United Projects Group	UPAC.KW	60.4	1.28	0.00%	NA	0.465	0.000	91.7	0.512	0.367	(9.2%)	0	0	0.0%	2.1%
▲ ALAFCO Aviation Lease & Finance Co.*	ALAF.KW	26.9	0.50	4.76%	0.85	0.168	0.001	160.0	0.278	0.138	(38.2%)	3,077,535	514,126	30.6%	1.9%
▲ Mubarrad Holding Co.	MBRD.KW	15.1	0.51	7.84%	0.94	0.063	0.002	10.3	0.089	0.049	(28.7%)	1,710,564	106,084	84.8%	3.4%
= KGL Logistics Co.	LOGK.KW	NM	0.20	0.00%	0.77	0.027	0.000	20.1	0.043	0.023	(26.5%)	0	0	26.6%	NM
▲ Integrated holding Co.	INTEGRATED.KW	31.9	1.39	7.83%	0.46	0.383	0.003	84.3	0.600	0.342	(30.5%)	164,907	62,696	25.5%	4.3%
= Sharjah Cement Co.	SCEM.KW	NM	0.22	0.00%	0.22	0.042	0.000	25.7	0.064	0.042	0.0%	0	0	0.0%	NM
▲ Gulf Cement Co.	GCEM.KW	NM	0.38	0.00%	0.21	0.036	0.001	29.1	0.060	0.029	(35.3%)	79,919	2,816	2.0%	NM
▲ Umm Al-Qaiwain General Investments Co.	QIC.KW	NM	0.53	6.81%	0.16	0.073	0.003	26.6	0.096	0.052	10.0%	16,499	1,197	0.2%	0.4%
▲ Fujairah Cement Industries Co.	FCEM.KW	NM	0.15	0.00%	0.48	0.036	0.001	12.6	0.052	0.029	(21.1%)	190,298	6,679	6.0%	NM
= Ras-Al-Khaimah for White Cement Co.	RKWC.KW	67.2	0.54	7.69%	0.11	0.065	0.000	32.5	0.080	0.055	0.0%	0	0	0.0%	0.8%
Industrials		54.5	0.95	2.39%				2,942.7			(10.6%)	22,630,499	5,396,126		1.7%

Boursa Kuwait Daily Bulletin

Monday, September 21, 2020

Company	Reuters Ticker	Valuation Multiples				Price (KWD)		MKT Cap (KWD Mn.)	52 Weeks High (KWD)	52 Weeks Low (KWD)	YTD-20 Return #	Daily Trading Data		YTD-20 Capital Turnover	ROE
		Trailing P/E (X)	Trailing P/BV (X)	Dividend Yield	Beta	Closing	DTD Change					Volume (Shrs.)	Value (KWD)		
= Palms Agro Production Co.	PAPK.KW	16.6	0.59	0.00%	0.24	0.065	0.000	3.4	0.065	0.025	61.7%	0	0	0.7%	3.6%
▲ Livestock Transport & Trading Co.	CATT.KW	24.1	0.96	0.00%	0.27	0.186	0.003	40.3	0.200	0.152	6.3%	41,100	7,574	12.3%	4.0%
= Danah Alsafat Foodstuff Co.	DANK.KW	NM	0.63	0.00%	0.74	0.012	0.000	1.3	0.029	0.010	(25.3%)	0	0	97.4%	NM
▼ Mezzan Holding Co.	MEZZ.KW	29.9	1.75	2.38%	0.46	0.618	(0.001)	192.4	0.665	0.428	23.6%	122,826	75,951	18.8%	5.8%
Consumer Goods		NM	1.48	1.93%		237.4		20.3%				163,926	83,526		NM
= Advanced Technology Co.	ATCK.KW	37.5	1.61	1.59%	0.00	0.627	0.000	94.1	0.900	0.580	(22.6%)	0	0	0.0%	4.3%
= Yiacco Medical Co.	YIAC.KW	NM	6.55	0.00%	NA	0.707	0.000	12.1	0.777	0.672	0.1%	0	0	0.0%	NM
= Al-Maidan Clinic For Oral Health Services Co.	MIDAN.KW	51.1	7.58	0.00%	0.00	1.220	0.000	305.0	1.220	1.220	0.0%	0	0	0.0%	14.8%
Health Care		49.2	4.09	0.36%		411.2		(6.3%)				0	0		8.3%
= Kuwait National Cinema Co.	KCIN.KW	30.2	0.96	4.71%	0.27	0.685	0.000	69.2	1.050	0.600	(34.6%)	0	0	1.0%	3.2%
= Kuwait Hotels Co.	KHOT.KW	NM	1.35	0.00%	NA	0.090	0.000	5.2	0.101	0.069	(10.3%)	0	0	0.1%	NM
▲ Sultan Center Food Products Co.	SCFK.KW	18.2	0.71	0.00%	0.53	0.057	0.002	33.1	0.060	0.036	10.0%	312,273	17,699	7.0%	3.9%
= Kuwait Cable Vision Co.	KWTV.KW	NM	0.52	0.00%	0.21	0.014	0.000	0.5	0.026	0.012	0.0%	0	0	0.0%	NM
▲ IFA Hotels & Resorts Co.*	IFAH.KW	NM	1.88	0.00%	0.24	0.025	0.001	16.1	0.062	0.021	(53.8%)	9,701,465	241,050	5.8%	NM
= Oula Fuel Marketing Co.	OULA.KW	31.8	0.71	0.00%	0.46	0.110	0.000	44.5	0.134	0.095	(13.4%)	29,510	3,232	4.4%	2.2%
▼ Kuwait Resorts Co.	MUNK.KW	16.9	0.39	0.00%	0.69	0.053	(0.000)	11.2	0.060	0.038	(8.0%)	682,649	36,079	47.6%	2.3%
▼ Jazeera Airways Co.	JAZK.KW	NM	4.36	0.00%	0.70	0.571	(0.005)	114.2	1.110	0.372	(48.0%)	416,928	238,587	24.0%	NM
▼ Soor Fuel Marketing Co.	SOOR.KW	20.4	0.68	0.00%	0.46	0.109	(0.002)	44.1	0.129	0.096	(12.8%)	10,567	1,154	4.8%	3.3%
= Future Kid Entertainment and R.E Co.	KIDK.KW	NM	0.53	0.00%	0.02	0.077	0.000	8.9	0.110	0.069	(13.3%)	0	0	0.6%	NM
= Al Rai Media Group Co.	ALRA.KW	NM	0.86	0.00%	0.26	0.037	0.000	8.6	0.045	0.031	(2.4%)	0	0	0.3%	NM
▼ Jiyad Holding Co	JIYAD.KW	11.4	0.36	0.00%	0.62	0.040	(0.001)	14.0	0.047	0.029	2.8%	314,709	12,952	16.6%	3.2%
= Al Eid Food Co.	ALEID.KW	5.7	0.44	0.00%	NA	0.068	0.000	8.2	0.080	0.038	3.0%	0	0	5.5%	7.8%
Consumer Services		NM	0.95	0.86%		377.9		(31.5%)				11,468,101	550,754		NM
▼ Zain	ZAIN.KW	12.4	2.06	5.66%	1.39	0.583	(0.001)	2,522.7	0.604	0.407	(2.8%)	4,710,298	2,747,906	17.6%	16.6%
▼ National Mobile Telecom Co.	OORE.KW	21.4	0.57	8.08%	0.46	0.615	(0.001)	310.0	0.835	0.550	(25.7%)	166,771	102,025	3.2%	2.7%
▲ AAN digital services Co.	AAN.KW	NM	0.36	0.00%	1.33	0.012	0.000	10.6	0.021	0.009	(9.6%)	16,809,101	207,970	164.7%	NM
= Kuwait Telecommunication Co.	STC.KW	10.6	2.03	5.95%	0.57	0.840	0.000	419.5	0.870	0.680	6.6%	21,421	17,999	2.2%	19.2%
▼ Hayat Communications Co.	HAYK.KW	7.8	0.55	0.00%	1.21	0.064	(0.001)	5.9	0.098	0.030	(14.7%)	300	19	6.4%	7.0%
Telecommunications		12.7	1.62	5.90%		3,268.7		(4.4%)				21,707,891	3,075,920		12.8%
▲ National Bank of Kuwait	NBKK.KW	19.9	1.96	3.74%	1.28	0.880	0.001	6,028.2	1.062	0.654	(13.6%)	3,828,862	3,366,545	15.7%	9.8%
= Gulf Bank	GBKK.KW	13.3	1.14	4.65%	1.13	0.225	0.000	685.8	0.317	0.180	(25.7%)	9,611,380	2,171,461	39.8%	8.6%
= Commercial Bank of Kuwait	CBKK.KW	NM	1.47	0.00%	0.39	0.500	0.000	996.0	0.555	0.465	(5.5%)	0	0	1.4%	NM
▲ Ahli Bank of Kuwait	ABKK.KW	NM	0.57	3.47%	0.63	0.200	0.001	323.8	0.310	0.156	(21.9%)	4,356,563	883,213	7.4%	0.3%
▲ Ahli United Bank - Kuwait	BKME.KW	15.0	1.45	4.46%	0.86	0.290	0.002	628.1	0.330	0.225	(11.0%)	479,248	138,303	5.9%	9.7%
▲ Kuwait International Bank	KIBK.KW	28.0	0.83	3.19%	0.99	0.189	0.002	214.1	0.271	0.162	(27.6%)	13,720,053	2,598,236	102.9%	3.0%
= Burgan Bank	BURG.KW	8.7	0.77	5.78%	1.05	0.207	0.000	543.4	0.324	0.175	(31.9%)	3,476,199	719,754	15.2%	8.8%
▲ Kuwait Finance House	KFH.KW	25.5	2.74	2.70%	1.42	0.666	0.012	5,111.0	0.761	0.473	(9.7%)	19,343,028	12,771,986	23.5%	10.7%
▲ Boubyan Bank	BOUK.KW	38.4	3.95	1.33%	1.04	0.600	0.005	1,956.2	0.638	0.380	5.8%	2,196,632	1,315,295	5.8%	10.3%
▼ Warba Bank	WARB.KW	NM	2.10	0.00%	0.99	0.243	(0.001)	382.7	0.279	0.164	(7.2%)	3,506,111	852,427	40.1%	NM
▼ Ahli United Bank - Bahrain	AUBK.KW	11.8	1.97	7.51%	1.12	0.240	(0.001)	2,337.0	0.311	0.160	(17.5%)	13,111,963	3,158,943	36.7%	16.6%
Banks		21.4	1.92	3.50%		19,273.8		(12.4%)				73,630,039	27,976,166		9.0%

Boursa Kuwait Daily Bulletin

Monday, September 21, 2020

Company	Reuters Ticker	Valuation Multiples				Price (KWD)		MKT Cap (KWD Mn.)	52 Weeks High (KWD)	52 Weeks Low (KWD)	YTD-20 Return #	Daily Trading Data		YTD-20 Capital Turnover	ROE
		Trailing P/E (X)	Trailing P/BV (X)	Dividend Yield	Beta	Closing	DTD Change					Volume (Shrs.)	Value (KWD)		
▼ Kuwait Insurance Co.	KINS.KW	6.2	0.79	8.05%	NA	0.355	(0.015)	68.9	0.387	0.300	7.6%	3,700	1,314	1.2%	12.8%
= Gulf Insurance Group	GINS.KW	7.6	1.04	5.91%	0.08	0.615	0.000	115.0	0.680	0.550	(6.8%)	4,000	2,460	0.1%	13.6%
= Ahleiah Insurance Co.	AINS.KW	8.0	0.81	5.64%	0.12	0.415	0.000	87.2	0.424	0.367	1.8%	50,068	20,778	1.3%	10.1%
= Warba Insurance Co.	WINS.KW	12.3	0.39	9.15%	0.36	0.075	0.000	13.3	0.094	0.051	24.0%	2,647	199	2.0%	3.1%
= Kuwait Reinsurance Co.	KWRE.KW	8.7	0.79	2.18%	0.02	0.211	0.000	43.0	0.211	0.126	52.9%	0	0	0.1%	9.1%
= First Takaful Insurance Co.	FTIK.KW	NM	0.47	0.00%	0.33	0.040	0.000	4.2	0.056	0.031	4.2%	0	0	2.6%	NM
= Wethaq Takaful Insurance Co.	WETH.KW	NM	0.22	0.00%	0.38	0.023	0.000	2.6	0.035	0.018	(6.4%)	281,956	6,590	14.8%	NM
= Bahrain Kuwait Insurance Co.	BKIK.KW	12.0	0.94	7.50%	0.02	0.200	0.000	28.6	0.220	0.190	0.0%	0	0	0.0%	7.8%
Insurance		9.2	0.81	5.94%				362.8			4.4%	342,371	31,339		8.8%
▲ Sokouk Holding Co.	SHCK.KW	NM	0.41	0.00%	1.16	0.028	0.001	16.5	0.040	0.022	(20.7%)	48,138,015	1,342,440	38.6%	NM
▼ Kuwait Real Estate Co.	KREK.KW	25.9	0.74	0.00%	0.99	0.099	(0.001)	93.8	0.115	0.070	(5.7%)	856,377	84,742	20.2%	2.8%
▲ United Real Estate Co.	UREK.KW	NM	0.33	0.00%	0.38	0.051	0.001	60.6	0.063	0.045	(16.8%)	27,056	1,355	0.6%	NM
▲ National Real Estate Co.	NREK.KW	25.3	0.41	0.00%	1.15	0.076	0.003	109.1	0.090	0.058	(12.3%)	4,191,597	314,279	17.0%	1.6%
▲ Salhia Real Estate Co.	SREK.KW	6.0	1.21	6.11%	0.34	0.394	0.001	202.0	0.460	0.325	(5.5%)	534,795	210,154	5.5%	20.2%
▲ Tamdeen Real Estate Co.	TAMK.KW	NM	0.78	1.90%	0.10	0.255	0.004	110.2	0.343	0.241	(20.6%)	3,922	1,000	0.6%	NM
▲ Ajial Real Estate Entertainment Co.	AREC.KW	21.3	0.23	0.00%	0.51	0.149	0.004	29.0	0.213	0.115	(13.6%)	32,284	4,788	3.9%	1.1%
▼ Al Massaleh Real Estate Co.	MREC.KW	NM	0.37	0.00%	0.23	0.033	(0.001)	7.8	0.040	0.026	(10.8%)	164,700	5,529	1.6%	NM
▲ Arab Real Estate Co.	ARAB.KW	NM	0.27	0.00%	1.18	0.027	0.000	13.6	0.033	0.020	(9.5%)	1,578,587	41,756	23.9%	NM
▲ AL-Enma'a Real Estate Co.*	ENMA.KW	22.6	0.51	0.00%	0.64	0.051	0.005	23.0	0.079	0.037	(18.4%)	14,795,846	738,983	29.5%	2.3%
▲ Mabanee Co.	MABK.KW	27.8	1.82	1.73%	1.10	0.760	0.031	839.9	0.878	0.434	(11.0%)	2,234,494	1,688,319	18.3%	6.5%
▼ Injazzat Real Estate Development Co.	INJA.KW	NM	0.49	0.00%	0.19	0.075	(0.000)	25.9	0.091	0.061	(6.3%)	10,009	756	1.1%	NM
▲ Investors Holding Group Co.	INVK.KW	NM	0.81	0.00%	1.17	0.016	0.001	10.2	0.032	0.007	103.8%	150,268,605	2,567,845	335.5%	NM
▼ The Commercial Real Estate Co.	TIJK.KW	19.5	0.64	4.77%	0.53	0.103	(0.002)	182.3	0.111	0.083	10.1%	386,774	40,363	8.3%	3.3%
▼ Sanam Real Estate Co.	SANK.KW	NM	0.38	0.00%	0.37	0.029	(0.001)	3.5	0.043	0.027	(28.8%)	80,000	2,280	2.5%	NM
▲ A'ayan Real Estate Co.	AYRE.KW	NM	0.36	0.00%	0.57	0.060	0.000	25.1	0.080	0.048	(17.4%)	775,840	46,667	3.8%	NM
= Aqar Real Estate Investment Co.	AQAR.KW	6.1	0.52	7.18%	NA	0.060	0.000	14.8	0.089	0.058	(21.3%)	0	0	1.8%	8.5%
▼ Kuwait Real Estate Holding Co.	ALAQ.KW	NM	0.61	0.00%	0.53	0.026	(0.000)	4.9	0.034	0.022	(10.1%)	158,059	4,110	8.4%	NM
▲ MAZAYA Holding Co.	MAZA.KW	NM	0.52	0.00%	0.99	0.056	0.001	38.5	0.067	0.047	(5.6%)	1,726,211	96,387	16.1%	NM
▲ Tijara Real Estate & Investment Co.	TJUA.KW	14.6	0.38	4.93%	0.29	0.041	0.003	15.0	0.055	0.034	(18.8%)	93,661	3,500	0.3%	2.6%
▼ Al TAMEER Real Estate Investment Co.	AMAR.KW	NM	0.33	0.00%	0.94	0.020	(0.000)	4.7	0.034	0.013	(26.0%)	2,094,017	41,013	89.3%	NM
= Arkan Al-Kuwait Real Estate Co. *	ARKK.KW	9.2	0.64	9.36%	0.22	0.086	0.000	21.5	0.100	0.076	(3.8%)	0	0	9.0%	6.9%
= Al-Argan International Real Estate Co.	ARGK.KW	NM	0.30	0.00%	0.43	0.093	0.000	24.5	0.135	0.060	(11.8%)	0	0	0.4%	NM
▼ Abyaar Real Estate Development Co.	ABYR.KW	NM	0.20	0.00%	1.20	0.007	(0.000)	8.0	0.014	0.005	(7.7%)	2,678,655	19,157	61.3%	NM
▲ Munshaat Real Estate Projects Co.	MUNS.KW	NM	0.55	0.00%	0.67	0.070	0.005	22.5	0.085	0.045	(5.4%)	2,333,108	162,163	7.0%	NM
▼ First Dubai For Real Estate Development	FIRST.KW	NM	0.57	0.00%	1.44	0.043	(0.000)	42.5	0.055	0.027	19.4%	3,570,125	151,887	30.3%	0.6%
▲ Kuwait Business Town Real Estate Co.	KBTK.KW	12.3	0.28	0.00%	1.06	0.030	0.000	19.1	0.046	0.022	(30.9%)	2,638,755	79,962	42.7%	2.2%
= Real Estate Asset Management Co.	REAM.KW	NM	1.48	0.00%	0.08	0.204	0.000	22.4	0.204	0.060	132.1%	0	0	0.1%	NM
= MENA Real Estate Co. *	MENK.KW	NM	0.20	0.00%	0.98	0.028	0.000	3.8	0.043	0.021	(32.4%)	2,535,996	71,266	97.2%	NM
= Al Mudon International Real Estate Co.	ALMK.KW	NM	0.12	0.00%	0.86	0.016	0.000	1.6	0.029	0.015	(35.1%)	0	0	23.7%	NM
▲ Real Estate Trade Centers Co.	MARA.KW	17.9	0.18	0.00%	0.33	0.031	0.002	4.3	0.050	0.018	33.2%	61,504	1,741	28.4%	1.0%
▲ Kuwait Remal Real Estate Co.	REMA.KW	NM	0.33	0.00%	0.85	0.021	0.001	6.5	0.027	0.013	(12.7%)	942,020	19,251	19.6%	NM
▲ Mashaer Holding Co.	MASHAER.KW	NM	0.53	8.33%	0.52	0.060	0.001	10.8	0.086	0.048	(22.7%)	213,836	12,458	32.2%	NM
= Effect Real Estate Co.	EFFECT.KW	NM	0.29	0.00%	0.44	0.021	0.000	1.7	N/A	N/A	0.0%	0	0	0.0%	NM
= Ajwan Gulf Real Estate Co.	AJWN.KW	NM	0.19	0.00%	0.60	0.011	0.000	2.2	0.016	0.009	(28.7%)	0	0	116.7%	NM
▼ Al Masaken Intl. Real Estate Dev. Co.	MASKN.KW	NM	0.37	0.00%	0.15	0.031	(0.002)	3.1	0.074	0.026	(28.6%)	500	16	1.0%	0.4%
= Dalqan Real Estate Co.	DALQ.KW	62.7	2.37	0.00%	NA	0.318	0.000	15.7	0.385	0.333	(10.1%)	0	0	0.0%	3.8%
▼ Dar Al Thuraya Real Estate Co.	THURY.KW	NM	0.72	0.00%	0.00	0.077	(0.013)	11.2	0.190	0.040	9.1%	26,392	2,121	2.3%	0.2%
▼ Osos Holding Group Co.	OSOS.KW	NM	0.82	7.42%	0.25	0.090	(0.001)	9.4	0.118	0.083	(10.1%)	14,512	1,296	7.2%	NM
▼ KFH Capital REIT	BAITAKREIT.KW	NA	NA	0.00%	NA	1.015	(0.011)	24.0	1.131	0.978	NA	40,446	41,084	4.8%	NA
Real Estate		NM	0.76	2.07%				2,085.2			(7.7%)	243,206,698	7,798,666		NM

Boursa Kuwait Daily Bulletin

Monday, September 21, 2020

Company	Reuters Ticker	Valuation Multiples				Price (KWD)		MKT Cap (KWD Mn.)	52 Weeks High (KWD)	52 Weeks Low (KWD)	YTD-20 Return #	Daily Trading Data		YTD-20 Capital Turnover	ROE
		Trailing P/E (X)	Trailing P/BV (X)	Dividend Yield	Beta	Closing	DTD Change					Volume (Shrs.)	Value (KWD)		
= Kuwait Investment Co.	KINV.KW	NM	0.70	12.43%	0.71	0.120	0.000	66.2	0.172	0.095	(20.0%)	2,764,204	331,042	25.4%	NM
▼ Commercial Facilities Co.	FACI.KW	NM	0.69	9.31%	0.52	0.183	(0.003)	98.2	0.235	0.179	(15.7%)	234,734	42,688	4.5%	NM
= Int'l Financial Advisors Co.	IFIN.KW	NM	0.99	0.00%	1.31	0.031	0.000	8.2	0.060	0.027	(42.3%)	0	0	32.0%	NM
▼ National Investment Co.	NINV.KW	NM	0.76	5.90%	1.24	0.139	(0.001)	121.8	0.158	0.080	0.7%	3,534,008	497,184	38.1%	NM
= Kuwait Projects Co.(Holding)	KPRO.KW	5.2	1.43	6.34%	0.57	0.155	0.000	310.0	0.225	0.147	(28.2%)	1,869,250	289,557	10.5%	27.3%
▲ Coast Invest. & Development Co.	COAS.KW	NM	0.43	0.00%	1.32	0.035	0.000	21.9	0.045	0.026	(12.3%)	300,010	10,272	18.8%	NM
▼ The Securities House Co.	SECH.KW	NM	0.53	0.00%	1.14	0.046	(0.001)	25.6	0.063	0.027	1.5%	4,415,422	206,060	63.9%	NM
▼ Arzan Financial Group For Fin. & Invest.	ARZA.KW	NM	0.51	0.00%	1.03	0.056	(0.001)	45.0	0.064	0.022	136.3%	15,254,189	861,665	210.9%	NM
▲ Kuwait Financial Centre	MARKZ.KW	NM	0.48	6.05%	0.77	0.083	0.000	39.8	0.121	0.070	(22.0%)	240,500	19,782	26.6%	NM
▲ Kuwait & M.E. Financial Inv. Co.	KMEF.KW	4.1	1.32	0.00%	0.61	0.117	0.002	30.9	0.138	0.063	30.7%	19,325	2,229	20.2%	32.2%
▲ First Investment Co.	OLAK.KW	NM	0.44	0.00%	1.01	0.030	0.000	19.7	0.045	0.022	(11.9%)	4,219,237	126,863	176.4%	NM
▼ Al-Mal Investment Co.	MALK.KW	NM	0.39	0.00%	1.20	0.009	(0.000)	2.9	0.016	0.008	(6.1%)	4,750,602	44,473	94.0%	NM
▲ Gulf Investment House	GIHK.KW	NM	1.83	0.00%	1.00	0.101	0.001	65.4	0.100	0.038	56.5%	6,120,593	631,261	22.6%	NM
▼ A'ayan Leasing & Investment Co.	AAYA.KW	NM	1.11	0.00%	1.24	0.088	(0.001)	71.5	0.102	0.032	88.0%	41,179,945	3,676,670	174.8%	NM
▲ Bayan Investment Co.	BAYK.KW	NM	0.50	0.00%	0.84	0.044	0.003	17.2	0.053	0.031	15.2%	569,276	25,201	6.0%	NM
▲ Osoul Investment Co.	OSUL.KW	NM	0.76	13.40%	0.44	0.082	0.001	12.8	0.121	0.070	8.7%	8,000	652	26.3%	NM
= Kuwait Finance & Investment Co.	KFSK.KW	NM	0.39	0.00%	0.30	0.045	0.000	14.6	0.058	0.038	(8.5%)	0	0	9.5%	NM
▼ Kamco Investment Co.	KAMC.KW	NM	0.51	6.93%	0.38	0.072	(0.000)	24.7	0.111	0.060	(19.8%)	1,039,766	75,009	14.8%	NM
▲ National International Holding Co.	NIHK.KW	7.6	0.36	0.00%	0.66	0.062	0.001	14.1	0.081	0.051	(15.5%)	271,018	16,480	4.3%	4.8%
▲ UniCap Investment and Finance	UNICAP.KW	NM	0.61	0.00%	0.65	0.046	0.002	11.0	0.057	0.035	(16.2%)	1,232,908	58,085	11.8%	NM
▲ Al Madar Finance & Investment Co.	MADR.KW	17.9	0.87	5.50%	0.34	0.088	0.002	18.8	0.148	0.062	(5.2%)	3,041,287	267,812	30.3%	4.9%
= Al-Deera Holding	DEER.KW	NM	1.92	0.00%	0.83	0.016	0.000	3.2	0.022	0.011	(20.0%)	0	0	6.1%	NM
▼ Al Salam Group Holding Co.	SAGH.KW	30.8	0.23	0.00%	1.27	0.027	(0.000)	7.3	0.033	0.018	(8.2%)	6,142,489	166,992	244.7%	0.8%
▲ Ektitab Holding Co.	EKTT.KW	NM	0.37	0.00%	1.00	0.015	0.000	4.8	0.017	0.010	1.3%	241,600	3,624	47.1%	NM
▲ Al Madina For Finance & Investment Co.	MADI.KW	NM	0.45	0.00%	1.22	0.013	0.000	5.3	0.019	0.009	(12.7%)	3,753,179	48,873	164.3%	NM
▲ NOOR Financial Investment Co.	NOOR.KW	8.0	1.22	3.48%	1.24	0.172	0.001	71.1	0.184	0.076	44.5%	197,359	33,491	53.4%	15.4%
= Tamdeen Investment Co.	TAMI.KW	NM	0.57	3.73%	0.33	0.320	0.000	110.4	0.400	0.199	(7.2%)	2,333	747	0.3%	NM
▼ Kuwait Syrian Holding Co.	KSHC.KW	NM	0.24	0.00%	0.73	0.027	(0.000)	4.7	0.043	0.022	(15.9%)	5,500	145	25.2%	NM
▼ Asiya Capital Investment Co.	ASIYA.KW	NM	0.37	0.00%	0.52	0.033	(0.001)	26.0	0.041	0.029	(20.5%)	119,992	3,906	1.6%	NM
▲ Gulf North Africa Holding Co.	GNAH.KW	NM	0.78	0.00%	1.09	0.058	0.002	8.8	0.062	0.052	(5.8%)	418,206	23,746	4.9%	NM
▲ Amwal International Investment Co.	AMWA.KW	NM	0.68	0.00%	0.39	0.036	0.003	6.4	0.053	0.030	18.7%	10	0	0.1%	NM
▼ Alimtiq Investment Group	ALIMK.KW	NM	0.54	0.00%	0.95	0.096	(0.001)	108.3	0.137	0.071	(24.2%)	3,408,276	326,714	40.0%	NM
= Tamkeen Holding Co.	TAMKE.KW	NM	0.05	0.00%	NA	0.005	0.000	0.3	N/A	N/A	0.0%	0	0	0.0%	NM
▼ Manazel Holding Co.	MANK.KW	10.0	0.74	0.00%	1.38	0.035	(0.001)	14.8	0.048	0.021	(12.0%)	9,390,290	332,034	49.1%	7.5%
▲ National Industries Group	NIND.KW	NM	0.80	5.65%	1.42	0.177	0.001	252.7	0.247	0.121	(26.6%)	3,336,506	590,975	40.4%	NM
▲ Warba Capital Holding Co.	WARBACAP.KW	NM	0.28	0.00%	0.70	0.047	0.002	2.4	0.070	0.042	(27.1%)	33,031	1,448	18.0%	NM
= Arabi Holding Group Co.	AGHC.KW	NM	1.23	0.00%	0.15	0.198	0.000	34.2	0.337	0.079	(27.7%)	0	0	3.1%	NM
= Privatization Holding Co.	KPPC.KW	NM	0.33	0.00%	0.79	0.043	0.000	25.9	0.059	0.037	(14.1%)	1,243,283	51,474	6.0%	NM
= Credit Rating & Collection Co.	TAHS.KW	NM	1.03	0.00%	NA	0.032	0.000	5.3	0.035	0.019	60.0%	0	0	0.2%	NM
= Egypt Kuwait Holding Co.	ECHK.KW	12.1	2.53	0.00%	0.16	0.370	0.000	379.0	0.500	0.318	(17.8%)	0	0	0.0%	20.9%
▼ GFH Financial Group	GFH.KW	18.5	0.99	7.89%	0.86	0.051	(0.000)	259.9	0.074	0.042	(26.1%)	1,041,724	52,940	1.6%	5.3%
▲ Inovent	INOV.KW	9.0	0.49	0.00%	0.71	0.070	0.001	21.1	0.072	0.044	9.7%	2,219,768	154,930	7.0%	5.4%
▼ Al Bareeq Holding	BAREEQ.KW	30.6	1.30	0.00%	0.03	0.079	(0.008)	59.7	0.110	0.088	(20.9%)	800	66	1.7%	4.3%
▲ Amar For Finance and Leasing Co.	AMARF.KW	NM	0.66	0.00%	0.07	0.056	0.003	11.2	0.064	0.037	47.4%	300	16	11.0%	NM
= Al-Manar Financing & Leasing Co.	ALMANAR.KW	NM	0.47	0.00%	0.53	0.049	0.000	15.1	0.060	0.037	(5.4%)	19,459	953	7.0%	NM
▲ Boursa Kuwait Securities Co	BOURSA.KW	19.5	6.79	0.00%	NA	1.106	0.006	222.1	1.210	0.990	NA	1,107,791	1,227,238	8.6%	34.8%
Financial Services		NM	0.92	3.42%				2,700.4			(2.4%)	123,746,170	10,203,296		NM

Boursa Kuwait Daily Bulletin

Monday, September 21, 2020

Company	Reuters Ticker	Valuation Multiples				Price (KWD)		MKT Cap (KWD Mn.)	52 Weeks High (KWD)	52 Weeks Low (KWD)	YTD-20 Return #	Daily Trading Data		YTD-20 Capital Turnover	ROE
		Trailing P/E (X)	Trailing P/BV (X)	Dividend Yield	Beta	Closing	DTD Change					Volume (Shrs.)	Value (KWD)		
▲ Automated Systems Co.	ASCK.KW	NM	0.59	0.00%	0.13	0.072	0.003	7.2	0.086	0.051	1.7%	145,500	10,101	2.2%	NM
Technology		NM	0.59	0.00%				7.2			1.7%	145,500	10,101		NM
▼ Shamal Az-Zour Al-Oula Power and Water Co.	AZNOULA.KW	30.0	4.81	0.00%	NA	0.335	(0.003)	368.5	0.500	0.297	N/A	6,243,246	2,097,700	31.3%	16.1%
Utilities		30.0	4.81	0.00%				368.5			N/A	6,243,246	2,097,700		16.1%
Boursa Kuwait		28.0	1.43	3.51%				32,996.6			(9.21%)	526,069,387	58,055,247		5.1%

Year-to-Date 2020 Top Movers & Most Active Stocks

YTD Top % Gainers	Close (KWD)	Percent Change
Arzan Financial Group For Fin. & Invest.	0.056	136.3%
Real Estate Asset Management Co.	0.204	132.1%
Investors Holding Group Co.	0.016	103.8%
A'ayan Leasing & Investment Co.	0.088	88.0%
Palms Agro Production Co.	0.065	61.7%
YTD Most Active by Volume	Close (KWD)	Volume (Shrs.)
Ahli United Bank - Bahrain	0.240	3,578,019,833
Investors Holding Group Co.	0.016	2,089,598,922
Kuwait Finance House	0.666	1,804,370,096
Gulf Petroleum Investment	0.020	1,704,242,919
Arzan Financial Group For Fin. & Invest.	0.056	1,693,063,237

YTD Top % Losers	Close (KWD)	Percent Change
IFA Hotels & Resorts Co.	0.025	(53.8%)
Jazeera Airways Co.	0.571	(48.0%)
Int'l Financial Advisors Co.	0.031	(42.3%)
ALAFCO Aviation Lease & Finance Co.	0.168	(38.2%)
Gulf Cement Co.	0.036	(35.3%)
YTD Most Active by Value	Close (KWD)	Value (KWD)
Kuwait Finance House	0.666	1,177,882,998
National Bank of Kuwait	0.880	906,881,395
Ahli United Bank - Bahrain	0.240	777,395,542
Zain	0.583	407,148,264
Agility (PWC Logistics)	0.667	326,802,793

* Different Fiscal Year Company

Disclaimer & Important Disclosures

Kamco Invest is authorized and fully regulated by the Capital Markets Authority ("CMA, Kuwait") and partially regulated by the Central Bank of Kuwait ("CBK").

This document is provided for informational purposes only. Nothing contained in this document constitutes investment, an offer to invest, legal, tax or other advice or guidance and should be disregarded when considering or making investment decisions. In preparing this document, Kamco Invest did not take into account the investment objectives, financial situation and particular needs of any particular person. Accordingly, before acting on this document, investors should independently evaluate the investments and strategies referred to herein and make their own determination of whether it is appropriate in light of their own financial circumstances and objectives. The entire content of this document is subject to copyright with all rights reserved. This research and the information contained herein may not be reproduced, distributed or transmitted in Kuwait or in any other jurisdiction to any other person or incorporated in any way into another document or other material without our prior written consent.

Analyst Certification

Each of the analysts identified in this report, if any and where applicable, certifies, with respect to the sector, companies or securities that the individual analyses, that (1) the views expressed in this report reflect his or her personal views about all of the subject companies and securities and (2) no part of his or her compensation was, is or will be directly or indirectly dependent on the specific recommendations or views expressed in this report.

Kamco Invest Ratings

Kamco Invest research is based on the analysis of regional and country economics, industries and company fundamentals. Kamco Invest company research reflects a long-term (12-month) target price for a company or stock. The ratings bands are:

* **Outperform:** Target Price represents expected returns >= 10% in the next 12 months

* **Neutral:** Target Price represents expected returns between -10% and +10% in the next 12 months

* **Underperform:** Target Price represents an expected return of <-10% in the next 12 months

In certain circumstances, ratings may differ from those implied by a fair value target using the criteria above. Kamco Invest policy is to maintain up-to-date fair value targets on the companies under its coverage, reflecting any material changes to the analyst's outlook on a company. Share price volatility may cause a stock to move outside the rating range implied by Kamco Invest's fair value target. Analysts may not necessarily change their ratings if this happens, but are expected to disclose the rationale behind their view to Kamco Invest clients.

Any terms and conditions proposed by you which are in addition to or which conflict with this Disclaimer are expressly rejected by Kamco Invest and shall be of no force or effect. The information contained in this document is based on current trade, statistical and other public information we consider reliable. We do not represent or warrant that such information is fair, accurate or complete and it should not be relied upon as such. Kamco Invest has no obligation to update, modify or amend this document or to otherwise notify a recipient thereof in the event that any opinion, forecast or estimate set forth herein, changes or subsequently becomes inaccurate. The publication is provided for informational uses only and is not intended for trading purposes. The information on publications does not give rise to any legally binding obligation and/or agreement, including without limitation any obligation to update such information. You shall be responsible for conducting your own investigation and analysis of the information contained or referred to in this document and of evaluating the merits and risks involved in the securities forming the subject matter of this or other such document. Moreover, the provision of certain data/information in the publication may be subject to the terms and conditions of other agreements to which Kamco Invest is a party.

Nothing in this document should be construed as a solicitation or offer, or recommendation, to acquire or dispose of any investment or to engage in any other transaction, or to provide any investment advice or service. This document is directed at Professional Clients and not Retail Clients within the meaning of CMA rules. Any other persons in receipt of this document must not rely upon or otherwise act upon it. Entities and individuals

Kamco Investment Company (DIFC) Limited ("Kamco Invest DIFC"), Office 205, Level 2, Gate Village 1, Dubai International Financial Centre, a wholly owned subsidiary of Kamco Investment Company KSC (Public), is regulated by the Dubai Financial Services Authority (DFSA). Kamco Invest DIFC may only undertake the financial services activities that fall within the scope of its existing DFSA licence. The information in this document may be distributed by Kamco Invest DIFC on behalf of Kamco Investment Company KSC (Public). This document is intended for Professional Clients or Market Counterparties only as defined by the DFSA, and no other person should act upon it.

This document may not be distributed in Saudi Arabia except to such persons as are permitted under the Offers of Securities Regulations issued by the Capital Market Authority. The Capital Market Authority does not make any representation as to the accuracy or completeness of this document, and expressly disclaims any liability whatsoever for any loss arising from, or incurred in reliance upon, any part of this document. The recipients of this document hereby should conduct their own due diligence on the accuracy of the information relating to the contents of this document. If you do not understand the contents of this document you should consult an authorized financial advisor.

Risk Warnings

Any prices, valuations or forecasts are indicative and are not intended to predict actual results, which may differ substantially from those reflected. The value of an investment may go up as well as down. The value of and income from any investment may fluctuate from day to day as a result of changes in relevant economic markets (including, without limitation, foreseeable or unforeseeable changes in interest rates, foreign exchange rates, default rates, prepayment rates, political or financial conditions, etc.).

Past performance is not indicative of future results. Any opinions, estimates, valuations or projections (target prices and ratings in particular) are inherently imprecise and a matter of judgment. They are statements of opinion and not of fact, based on current expectations, estimates and projections, and rely on beliefs and assumptions. Actual outcomes and returns may differ materially from what is expressed or forecasted. There are no guarantees of future performance. Certain transactions, including those involving futures, options, and other derivatives, give rise to substantial risk and are not suitable for all investors. This document does not propose to identify or to suggest all of the risks (direct or indirect) which may be associated with the investments and strategies referred to herein.

Conflict of Interest

Kamco Invest and its affiliates provide full investment banking services, and they and their directors, officers and employees, may take positions which conflict with the views expressed in this document. Salespeople, traders, and other professionals of Kamco Invest may provide oral or written market commentary or trading strategies to our clients and our proprietary trading desks that reflect opinions that are contrary to the opinions expressed in this document. Our asset management area, our proprietary trading desks and investing businesses may make investment decisions that are inconsistent with the recommendations or views expressed in this document. Kamco Invest may have or seek transactions, including or other business relationships for which it will receive compensation from the companies that are the subject of this document. Facts and views presented in this document have not been reviewed by, and may not reflect information known to, professionals in other Kamco Invest business areas, including investment banking personnel. United Gulf Bank, Bahrain owns majority of Kamco Invest's shareholding and this ownership may create, or may create the appearance of, conflicts of interest.

No Liability & Warranty

Kamco Invest makes neither implied nor expressed representations or warranties and, to the fullest extent permitted by applicable law, we hereby expressly disclaim any and all express, implied and statutory representations and warranties of any kind, including, without limitation, any warranty as to accuracy, timeliness, completeness, and fitness for a particular purpose and/or non-infringement. Kamco Invest will accept no liability in any event including (without limitation) your reliance on the information contained in this document, any negligence for any damages or loss of any kind, including (without limitation) direct, indirect, incidental, special or consequential damages, expenses or losses arising out of, or in connection with your use or inability to use this document, or in connection with any error, omission, defect, computer virus or system failure, or