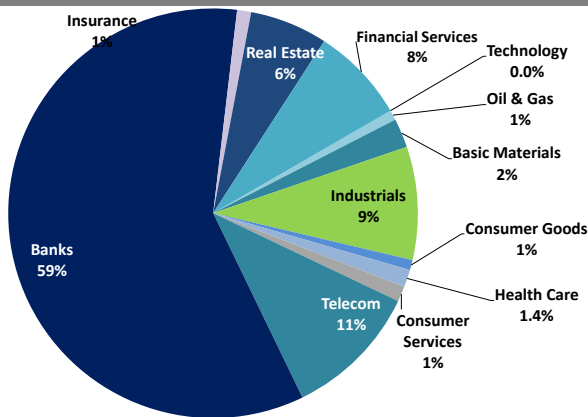


Boursa Kuwait Daily Report

August 18, 2020

Sector Weight by Market Cap



Top 10 Companies by Market Capitalization

Company Name	Market Cap. (Mn KWD)	P/E (X)	ROE* (%)
1- National Bank of Kuwait	5,678.8	14.2	11.7%
2- Kuwait Finance House	4,704.2	18.7	12.2%
3- Zain	2,548.6	11.7	16.7%
4- Ahli United Bank - Bahrain	2,152.0	9.7	17.1%
5- Boubyan Bank	1,825.7	29.1	10.9%
6- Agility (PWC Logistics)	1,252.9	14.4	7.9%
7- Commercial Bank of Kuwait	1,023.9	NM	0.0%
8- Mabane Co.	727.2	12.9	11.9%
9- Gulf Bank	649.3	10.2	9.6%
10- Ahli United Bank - Kuwait	571.8	10.4	12.1%
Total	21,134	14.93	11.7%

*: ROE is calculated based on FY2019 net profit & shareholders' equity as of 31-December-19

Top Movers and Most Active Stocks

Today's Top % Gainers	Close (KWD)	Change (KWD)	Percent Change
Real Estate Asset Management Co.	0.170	0.021	14.1%
Gulf Cement Co.	0.038	0.003	9.9%
Arzan Financial Group For Fin. & Invest.	0.046	0.003	6.9%
Wethaq Takaful Insurance Co.	0.026	0.002	6.1%
Amar For Finance And Leasing Co.	0.047	0.002	5.1%




Today's Top % Losers	Close (KWD)	Change (KWD)	Percent Change
Shamal Az-Zour Al-Oula Power and Water (0.333	(0.048)	(12.6%)
Kuwait Remal Real Estate Co.	0.014	(0.001)	(6.8%)
UniCap Investment and Finance	0.035	(0.003)	(6.7%)
Jiyad Holding Co.	0.032	(0.002)	(6.1%)
Hilal Cement Co.	0.065	(0.003)	(5.0%)

Today's Most Active by Volume	Close (KWD)	Percent Change	Volume (Shares)
Shamal Az-Zour Al-Oula Power and Water (0.333	(12.6%)	36,755,056
Ahli United Bank - Bahrain	0.221	(0.5%)	32,065,126
Arzan Financial Group For Fin. & Invest.	0.046	6.9%	26,033,729
Gulf Petroleum Investment	0.018	0.5%	25,206,290
ALAFCO Aviation Lease & Finance Co.	0.157	0.6%	10,414,473

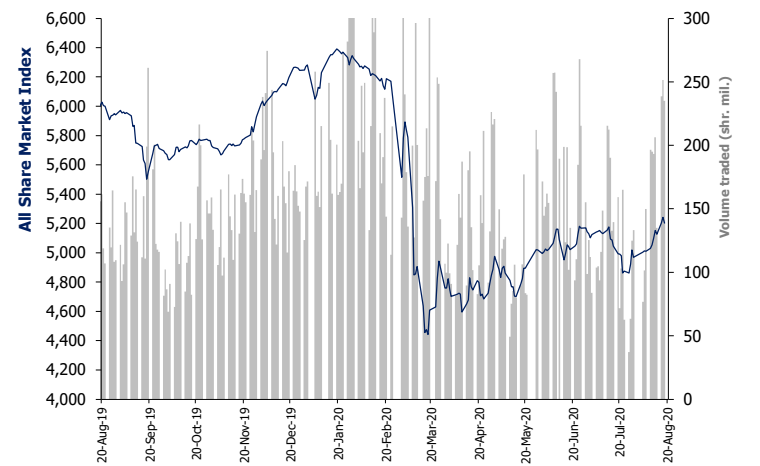
Source: Boursa Kuwait, Kamco Invest Research

Market Capitalization - Sector Returns

	Market Cap. (KWD Mn)	DTD %	DTD % Chg	MTD % Chg	YTD % Chg
Boursa Kuwait	30,800.5	▼	(0.8%)	6.1%	(15.3%)
Oil & Gas	236.1	▼	(1.9%)	(1.4%)	(8.4%)
Basic Materials	703.0	▼	(0.7%)	3.6%	(13.0%)
Industrials	2,714.6	▼	(0.8%)	(2.1%)	(17.5%)
Consumer Goods	246.0	▲	1.7%	9.4%	24.6%
Health Care	416.1	=	0.0%	0.0%	(5.1%)
Consumer Services	370.3	▼	(1.1%)	(4.6%)	(32.9%)
Telecommunications	3,269.0	▼	(0.2%)	5.6%	(4.4%)
Banks	17,974.5	▼	(0.7%)	6.9%	(18.3%)
Insurance	343.1	▼	(1.4%)	0.7%	(1.2%)
Real Estate	1,868.3	▼	(0.6%)	3.8%	(17.3%)
Financial Services	2,287.1	▼	(0.1%)	1.7%	(17.4%)
Technology	6.1	▼	(0.8%)	(4.7%)	(13.8%)
Utilities	366.3	▼	-12.6%	N/A	N/A

Market Breadth	 40	 52	 82		
Benchmark Return	Closing	DTD	DTD	MTD	YTD
	Value	Chg	% Chg	% Chg	% Chg
Premier Market Index	5,740.80	(57.2)	(1.0%)	6.0%	(17.7%)
Main 50 Index	4,146.64	(4.6)	(0.1%)	2.4%	(16.9%)
Main Market Index	4,136.61	(6.3)	(0.2%)	1.2%	(15.8%)
All Share Market Index	5,202.23	(40.4)	(0.8%)	4.7%	(17.2%)
Market Cap (KWD Mn)	30,800.48	(239.0)	(0.8%)	6.1%	(15.3%)

Index Performance relative to Volume



Market Trading Data and Volatility

Trading Indicators	Today's Value	DTD Chg	DTD % Chg	Average Daily YTD 2020	YTD 2019
Volume (Shrs Mn)	235.0	(16.3)	(6.5%)	170.3	88.6
Value Traded (KWD Mn)	47.9	(6.9)	(12.5%)	34.4	16.9
No. of Trades	11,120	(355)	(3.09%)	8,094	3,810

Today's Most Active by Value	Close (KWD)	Percent Change	Value (KWD)
Shamal Az-Zour Al-Oula Power and Water Co	0.333	(12.6%)	12,875,187
Ahli United Bank - Bahrain	0.221	(0.5%)	7,094,828
Kuwait Finance House	0.613	(1.3%)	4,160,936
National Bank of Kuwait	0.829	(1.0%)	4,154,153
Zain	0.589	(0.2%)	3,069,637

Boursa Kuwait - Premier Market

Tuesday, August 18, 2020

	Premier Market Stocks	Closing Price			Market Capitalization			Valuation Multiples				ROE	YTD-20 Price Return	YTD-20 Trading Indicators	
		KWD	DTD Chg. (KWD)	D-T-D Return	KWD Mn	Weight in Premier Index	Weight in Boursa Kuwait	P/E (X)	P/BV (X)	Yield	Beta			Volume (Mn Shrs)	Value (KWD Mn)
▼	National Bank of Kuwait	0.829	(0.008)	(1.0%)	5,679	25.1%	18.4%	14.2	1.65	4.0%	1.28	11.7%	(18.6%)	969.32	816.80
▼	Gulf Bank	0.213	(0.001)	(0.5%)	649	2.9%	2.1%	10.2	0.98	4.9%	1.13	9.6%	(29.7%)	994.91	224.86
=	Kuwait International Bank	0.172	0.000	0.0%	195	0.9%	0.6%	11.4	0.69	3.5%	1.00	6.1%	(34.1%)	964.15	186.85
▲	Burgan Bank	0.196	0.001	0.5%	515	2.3%	1.7%	6.1	0.68	6.1%	1.05	11.3%	(35.5%)	354.64	78.64
▼	Kuwait Finance House	0.613	(0.008)	(1.3%)	4,704	20.8%	15.3%	18.7	2.28	2.9%	1.42	12.2%	(16.9%)	1,606.42	1,052.89
=	Boubyan Bank	0.560	0.000	0.0%	1,826	8.1%	5.9%	29.1	3.17	1.4%	1.05	10.9%	(1.2%)	156.92	83.31
=	Kuwait Projects Co. (Holding)	0.149	0.000	0.0%	298	1.3%	1.0%	9.9	0.88	6.6%	0.57	8.9%	(31.0%)	144.56	24.68
▼	Mabane Co.	0.658	(0.011)	(1.6%)	727	3.2%	2.4%	12.9	1.54	2.0%	1.09	11.9%	(22.9%)	182.38	119.26
▼	National Industries Group (Holding)	0.159	(0.001)	(0.6%)	227	1.0%	0.7%	4.9	0.63	6.3%	1.43	12.9%	(34.0%)	486.61	89.80
▼	Boubyan Petrochemical Co.	0.546	(0.003)	(0.5%)	292	1.3%	0.9%	24.7	1.31	6.2%	0.73	5.3%	(18.3%)	65.35	37.04
▼	Qurain Petrochemicals Industries Co.	0.288	(0.003)	(1.0%)	317	1.4%	1.0%	11.2	0.75	5.3%	0.76	6.7%	(7.1%)	119.97	31.17
▼	Agility Public Warehousing Co.	0.618	(0.009)	(1.4%)	1,253	5.5%	4.1%	14.4	1.14	0.7%	1.48	7.9%	(13.1%)	454.63	297.72
▼	Mobile Telecommunications Co.	0.589	(0.001)	(0.2%)	2,549	11.2%	8.3%	11.7	1.96	5.6%	1.40	16.7%	(1.8%)	676.19	358.38
▼	Human Soft Holding Co.	2.574	(0.026)	(1.0%)	315	1.4%	1.0%	8.8	3.91	7.2%	0.47	44.6%	(14.5%)	37.16	103.01
▼	Ahli United Bank (B.S.C)	0.221	(0.001)	(0.5%)	2,152	9.5%	7.0%	9.7	1.66	8.2%	1.11	17.1%	(24.1%)	3,175.50	685.45
▼	Warba Bank	0.200	(0.003)	(1.5%)	315	1.4%	1.0%	19.0	1.44	0.0%	0.99	7.6%	(23.6%)	415.74	88.78
▲	Mezzan Holding Co.	0.645	0.013	2.1%	201	0.9%	0.7%	35.6	1.90	2.3%	0.46	5.3%	29.0%	53.52	29.26
=	Integrated Holding Co.	0.370	0.000	0.0%	81	0.4%	0.3%	10.3	1.19	8.1%	0.45	11.5%	(32.8%)	44.31	21.20
▼	Shamal Az-Zour Al-Oula Power and Water	0.333	(0.048)	(12.6%)	366	1.6%	1.2%	29.8	4.78	0.0%	NA	16.1%	0.0%	116.90	45.24
Subtotal- Premier Market Stocks		5,740.80	(57.18)	-0.99%	22,660	100%	74%	13.7	1.64	3.99%		12.0%	-17.2%	11,019.18	4,374.35
Remaining of the Market					8,141		26%	20.3	0.74	4.36%		3.6%		14,358.10	756.01

Source: Kamco Research

Boursa Kuwait Daily Bulletin

Tuesday, August 18, 2020

Company	Reuters Ticker	Valuation Multiples				Price (KWD)		MKT Cap (KWD Mn.)	52 Weeks High (KWD)	52 Weeks Low (KWD)	YTD-20 Return #	Daily Trading Data		YTD-20 Capital Turnover	ROE
		Trailing P/E (X)	Trailing P/BV (X)	Dividend Yield	Beta	Closing	DTD Change					Volume (Shrs.)	Value (KWD)		
▼ Senergy Holding Co.	SENE.KW	NM	0.33	0.00%	1.14	0.016	(0.000)	3.2	0.027	0.014	(26.0%)	211,991	3,414	21.4%	NM
▼ Independent Petroleum Group	IPGK.KW	13.5	0.92	6.04%	0.28	0.400	(0.020)	89.8	0.497	0.375	(17.0%)	490	196	0.3%	6.8%
= National Petroleum Services Co.	NAPS.KW	9.2	2.56	6.50%	0.23	1.045	0.000	104.5	1.389	0.903	(10.7%)	0	0	0.2%	27.9%
= The Energy House Co.	ENER.KW	NM	0.66	0.00%	0.94	0.022	0.000	16.1	0.036	0.014	(5.7%)	0	0	5.5%	NM
▲ Gulf Petroleum Investment	GPIK.KW	NM	0.13	0.00%	1.07	0.018	0.000	5.5	0.025	0.012	(8.5%)	25,206,290	473,944	378.4%	NM
= Burgan Co. for Drilling, Tdg. & Maint. *	ABAR.KW	11.1	0.26	0.00%	NA	0.070	0.000	17.0	0.098	0.062	(12.7%)	0	0	0.1%	2.4%
Oil & Gas		29.4	0.85	5.17%				236.1			(8.4%)	25,418,771	477,554		2.9%
▼ Kuwait Foundry Co.	KFDC.KW	18.7	0.78	6.47%	0.67	0.232	(0.002)	16.8	0.564	0.192	(30.7%)	7,505	1,755	1.7%	4.1%
▼ Boubyan Petrochemicals Co.*	BPCC.KW	24.7	1.31	6.23%	0.73	0.546	(0.003)	292.0	0.818	0.395	(18.3%)	358,219	195,661	12.2%	5.3%
= Al Kout for Industrial Projects Co.	ALKK.KW	16.2	2.50	6.50%	0.02	0.769	0.000	77.6	0.850	0.769	(9.5%)	0	0	0.0%	15.4%
▼ Qurain Petrochemical Industries Co. *	ALQK.KW	11.2	0.75	5.26%	0.76	0.288	(0.003)	316.6	0.347	0.163	(7.1%)	169,353	48,724	10.9%	6.7%
Basic Materials		15.4	1.01	5.83%				703.0			(13.0%)	535,077	246,140		6.6%
▲ Specialities Group Holding Co.	SPEC.KW	7.5	0.34	0.00%	0.39	0.066	0.000	9.9	0.086	0.055	(21.5%)	146,700	9,525	24.5%	4.5%
▼ Kuwait Cement Co.	KCEM.KW	28.7	0.55	3.10%	0.46	0.157	(0.005)	115.1	0.284	0.144	(36.2%)	837,504	132,092	6.5%	1.9%
▼ Gulf Cable & Electrical Ind. Co.	CABL.KW	29.5	0.72	6.72%	0.91	0.595	(0.003)	124.9	0.611	0.390	21.9%	304,600	180,460	35.7%	2.4%
▼ Heavy Eng'g Ind. & Shipbuilding Co.	SHIP.KW	5.7	1.03	8.43%	0.60	0.356	(0.003)	64.2	0.419	0.298	(12.1%)	401,061	142,449	21.1%	18.0%
= Kuwait Portland Cement Co.	PCEM.KW	9.6	0.97	5.52%	0.46	0.725	0.000	72.7	1.215	0.683	(26.2%)	14,804	10,718	5.1%	10.2%
= Shuaiba Industrial Co.	PAPE.KW	39.1	0.71	3.97%	0.12	0.124	0.000	12.5	0.180	0.122	(20.0%)	0	0	0.5%	1.8%
= Metal & Recycling Co.	MRCK.KW	NM	0.50	0.00%	0.22	0.046	0.000	5.4	0.070	0.020	(8.2%)	0	0	1.6%	NM
▲ ACICO Industries Co.	ACIC.KW	11.7	0.29	5.35%	0.37	0.098	0.000	29.5	0.145	0.081	(26.4%)	22,827	2,192	5.3%	2.5%
▼ Hilal Cement Co.	HCCCK.KW	NM	0.57	23.08%	0.08	0.065	(0.003)	6.6	0.100	0.063	(35.0%)	1,281	83	0.2%	NM
▲ National Industries Co.	NIBM.KW	13.4	0.69	6.22%	0.16	0.155	0.003	57.7	0.180	0.143	(6.1%)	20,500	3,228	0.2%	5.1%
▲ Equipment Holding Co.	EQUI.KW	NM	0.31	0.00%	1.04	0.016	0.001	2.1	0.024	0.013	(29.2%)	1,078,772	16,720	12.3%	NM
= National Co. for Consumer Industries	NCCI.KW	NM	0.61	0.00%	NA	0.055	0.000	4.9	0.100	0.010	(0.2%)	0	0	0.4%	0.2%
= Salbookh Trading Co.	SALB.KW	NM	0.42	0.00%	0.60	0.030	0.000	3.1	0.051	0.026	(40.5%)	0	0	21.3%	NM
▼ Agility (PWC Logistics)	AGLT.KW	14.4	1.14	0.67%	1.48	0.618	(0.009)	1,252.9	0.748	0.357	(13.1%)	4,903,157	3,034,913	22.4%	7.9%
▲ Educational Holding Group*	EDUK.KW	8.6	1.67	20.57%	0.46	0.289	0.002	70.9	0.475	0.228	(34.2%)	11,800	3,394	0.9%	19.5%
▲ National Cleaning Co.	CLEA.KW	7.2	0.36	9.44%	0.84	0.051	0.000	12.8	0.088	0.047	(25.5%)	972	50	21.1%	4.9%
= Kuwait & Gulf Link Transport Co.	KGLK.KW	NM	0.21	0.00%	0.77	0.046	0.000	13.3	0.080	0.042	(31.0%)	253,521	11,232	11.0%	NM
= Kuwait Co. For Process Plant Const. & Cont.	KCPK.KW	6.7	1.24	7.25%	0.47	0.303	0.000	33.4	0.338	0.173	25.8%	283,244	85,777	28.4%	18.5%
▼ Humansoft Holding Co.	HUMN.KW	8.8	3.91	7.15%	0.47	2.574	(0.026)	314.6	3.470	1.944	(14.5%)	198,468	510,806	30.4%	44.6%
= Gulf Franchising Co.	GFCL.KW	NM	1.01	0.00%	NA	0.065	0.000	2.6	0.148	0.001	(14.0%)	0	0	0.6%	NM
▲ National Shooting Co.	SHOOTING.KW	NM	0.30	0.00%	1.25	0.017	0.001	4.7	0.018	0.007	66.0%	367,208	5,516	71.4%	NM
▼ Combined Group Contracting Co.	CGCK.KW	7.2	0.55	12.58%	0.57	0.151	(0.006)	25.9	0.251	0.143	(39.3%)	524,361	78,524	75.2%	7.7%
= United Projects Group	UPAC.KW	9.8	1.21	3.66%	NA	0.465	0.000	91.7	0.512	0.367	(9.2%)	0	0	0.0%	12.3%
▲ ALAFCO Aviation Lease & Finance Co.*	ALAF.KW	6.7	0.47	5.10%	0.85	0.157	0.001	149.5	0.279	0.138	(42.3%)	10,414,473	1,643,465	20.1%	7.0%
▼ Mubarrad Holding Co.	MBRD.KW	8.9	0.44	8.87%	0.95	0.055	(0.000)	9.1	0.089	0.049	(37.0%)	94,450	5,240	65.4%	4.9%
▲ KGL Logistics Co.	LOGK.KW	6.8	0.18	0.00%	0.78	0.025	0.000	18.6	0.043	0.023	(32.2%)	1,186,872	29,642	22.1%	2.7%
= Integrated holding Co.	INTEGRATED.KW	10.3	1.19	8.11%	0.45	0.370	0.000	81.4	0.600	0.360	(32.8%)	189,652	70,034	20.1%	11.5%
= Sharjah Cement Co.	SCEM.KW	25.7	0.22	0.00%	0.23	0.042	0.000	25.7	0.066	0.042	0.0%	0	0	0.0%	0.9%
▲ Gulf Cement Co.	GCEM.KW	NM	0.38	0.00%	0.22	0.038	0.003	31.0	0.063	0.032	(31.3%)	27,857	940	1.3%	NM
= Umm Al-Qaiwain General Investments Co.	QIC.KW	13.0	0.45	7.50%	0.16	0.067	0.000	24.2	0.087	0.052	0.0%	0	0	0.0%	3.5%
= Fujairah Cement Industries Co.	FCEM.KW	15.5	0.13	0.00%	0.51	0.031	0.000	11.2	0.053	0.029	(30.2%)	0	0	5.2%	0.8%
= Ras-Al-Khaimah for White Cement Co.	RKWC.KW	20.3	0.52	7.69%	0.11	0.065	0.000	32.5	0.080	0.053	0.0%	0	0	0.0%	2.6%
Industrials		12.8	0.85	3.82%				2,714.6			(17.5%)	21,284,084	5,976,999		6.7%

Boursa Kuwait Daily Bulletin

Tuesday, August 18, 2020

Company	Reuters Ticker	Valuation Multiples				Price (KWD)		MKT Cap (KWD Mn.)	52 Weeks High (KWD)	52 Weeks Low (KWD)	YTD-20 Return #	Daily Trading Data		YTD-20 Capital Turnover	ROE
		Trailing P/E (X)	Trailing P/BV (X)	Dividend Yield	Beta	Closing	DTD Change					Volume (Shrs.)	Value (KWD)		
= Palms Agro Production Co.	PAPK.KW	NM	0.51	0.00%	0.23	0.060	0.000	3.1	0.060	0.025	49.3%	0	0	0.3%	NM
= Livestock Transport & Trading Co.	CATT.KW	34.7	1.01	0.00%	0.27	0.188	0.000	40.7	0.200	0.152	7.4%	336,513	62,854	11.4%	2.9%
= Danah Alsafat Foodstuff Co.	DANK.KW	NM	0.25	0.00%	0.75	0.012	0.000	1.3	0.032	0.010	(25.3%)	0	0	97.4%	NM
▲ Mezzan Holding Co.	MEZZ.KW	35.6	1.90	2.28%	0.46	0.645	0.013	200.8	0.639	0.428	29.0%	972,211	627,416	17.2%	5.3%
Consumer Goods		NM	1.57	1.86%		246.0		246.0			24.6%	1,308,724	690,269		1.4%
= Advanced Technology Co.	ATCK.KW	53.7	1.72	1.52%	0.01	0.660	0.000	99.0	0.930	0.580	(18.5%)	0	0	0.0%	3.2%
= Yiacco Medical Co.	YIAC.KW	52.7	6.06	0.00%	NA	0.707	0.000	12.1	0.777	0.672	0.1%	0	0	0.0%	11.5%
= Al-Maidan Clinic For Oral Health Services Co.	MIDAN.KW	50.3	8.26	0.00%	0.00	1.220	0.000	305.0	1.220	1.220	0.0%	0	0	0.0%	16.4%
Health Care		51.1	4.31	0.36%		416.1		416.1			(5.1%)	0	0		8.4%
▼ Kuwait National Cinema Co.	KCIN.KW	7.7	0.81	4.97%	0.27	0.649	(0.031)	65.6	1.050	0.655	(38.1%)	209,865	136,723	0.5%	10.6%
▼ Kuwait Hotels Co.	KHOT.KW	NM	1.17	0.00%	NA	0.081	(0.004)	4.7	0.101	0.069	(18.9%)	100	8	0.1%	NM
▲ Sultan Center Food Products Co.	SCFK.KW	14.7	0.73	0.00%	0.53	0.057	0.002	32.9	0.060	0.036	9.4%	218,849	12,407	6.6%	4.9%
= Kuwait Cable Vision Co.	KWTV.KW	NM	0.52	0.00%	0.22	0.014	0.000	0.5	0.027	0.012	0.0%	0	0	0.0%	NM
▲ IFA Hotels & Resorts Co.*	IFAH.KW	NM	0.85	0.00%	0.22	0.023	0.001	14.6	0.062	0.021	(58.2%)	13,100	286	2.7%	NM
▲ Oula Fuel Marketing Co.	OULA.KW	11.6	0.67	4.44%	0.46	0.111	0.001	44.9	0.134	0.095	(12.6%)	4,569	503	4.0%	5.7%
▼ Kuwait Resorts Co.	MUNK.KW	9.0	0.34	0.00%	0.70	0.049	(0.000)	9.6	0.064	0.040	(21.5%)	987,701	47,833	38.9%	3.8%
▼ Jazeera Airways Co.	JAZK.KW	7.8	2.88	6.03%	0.71	0.580	(0.010)	116.0	1.110	0.372	(47.2%)	242,344	141,100	21.4%	37.1%
= Soor Fuel Marketing Co.	SOOR.KW	12.8	0.67	4.54%	0.46	0.109	0.000	44.1	0.129	0.096	(12.8%)	4,531	494	4.6%	5.3%
▲ Future Kid Entertainment and R.E Co.	KIDK.KW	35.2	0.54	13.45%	0.03	0.088	0.001	10.2	0.110	0.069	(0.2%)	210	18	0.5%	1.5%
= Al Rai Media Group Co.	ALRA.KW	NM	0.83	0.00%	0.27	0.037	0.000	8.6	0.049	0.030	(2.4%)	0	0	0.3%	NM
▼ Jiyad Holding Co	JIYAD.KW	6.4	0.29	0.00%	0.62	0.032	(0.002)	11.3	0.047	0.029	(17.4%)	157,824	5,134	12.5%	4.5%
= Al Eid Food Co.	ALEID.KW	4.8	0.41	0.00%	NA	0.072	0.000	7.2	0.096	0.046	(8.9%)	9,000	648	4.3%	8.7%
Consumer Services		34.9	0.85	4.22%		370.3		370.3			(32.9%)	1,848,093	345,155		2.4%
▼ Zain	ZAIN.KW	11.7	1.96	5.60%	1.40	0.589	(0.001)	2,548.6	0.604	0.407	(1.8%)	5,203,032	3,069,637	15.6%	16.7%
= National Mobile Telecom Co.	OORE.KW	9.7	0.51	8.62%	0.46	0.577	0.000	290.8	0.835	0.550	(30.3%)	99,674	57,660	2.7%	5.3%
▲ AAN digital services Co.	AAN.KW	34.5	0.31	0.00%	1.33	0.011	0.000	9.2	0.021	0.009	(22.2%)	6,221,941	64,928	124.0%	0.9%
▼ Kuwait Telecommunication Co.	STC.KW	9.5	1.93	6.01%	0.58	0.832	(0.007)	415.5	0.870	0.680	5.6%	53,226	44,220	2.1%	20.2%
▼ Hayat Communications Co.	HAYK.KW	23.5	0.48	0.00%	1.14	0.052	(0.001)	4.8	0.098	0.025	(30.3%)	1	0	5.5%	2.0%
Telecommunications		11.2	1.54	5.90%		3,269.0		3,269.0			(4.4%)	11,577,874	3,236,446		13.7%
▼ National Bank of Kuwait	NBKK.KW	14.2	1.65	3.97%	1.28	0.829	(0.008)	5,678.8	1.062	0.654	(18.6%)	4,982,202	4,154,153	14.2%	11.7%
▼ Gulf Bank	GBKK.KW	10.2	0.98	4.91%	1.13	0.213	(0.001)	649.3	0.317	0.180	(29.7%)	4,666,589	991,797	32.6%	9.6%
= Commercial Bank of Kuwait	CBKK.KW	NM	1.40	3.87%	0.39	0.514	0.000	1,023.9	0.555	0.465	(2.8%)	0	0	1.3%	0.0%
▲ Ahli Bank of Kuwait	ABKK.KW	9.7	0.46	4.06%	0.62	0.171	0.001	276.9	0.325	0.156	(33.2%)	145,297	24,649	6.2%	4.8%
= Ahli United Bank - Kuwait	BKME.KW	10.4	1.26	4.90%	0.85	0.264	0.000	571.8	0.336	0.225	(18.9%)	175,550	46,343	5.4%	12.1%
= Kuwait International Bank	KIBK.KW	11.4	0.69	3.50%	1.00	0.172	0.000	194.8	0.271	0.162	(34.1%)	5,829,799	1,008,151	85.1%	6.1%
▲ Burgan Bank	BURG.KW	6.1	0.68	6.11%	1.05	0.196	0.001	514.5	0.355	0.175	(35.5%)	3,485,064	683,375	13.5%	11.3%
▼ Kuwait Finance House	KFH.KW	18.7	2.28	2.94%	1.42	0.613	(0.008)	4,704.2	0.761	0.473	(16.9%)	6,736,796	4,160,936	20.9%	12.2%
= Boubyan Bank	BOUK.KW	29.1	3.17	1.42%	1.05	0.560	0.000	1,825.7	0.638	0.380	(1.2%)	719,152	404,596	4.8%	10.9%
▼ Warba Bank	WARB.KW	19.0	1.44	0.00%	0.99	0.200	(0.003)	315.0	0.279	0.164	(23.6%)	2,303,131	462,178	26.4%	7.6%
▼ Ahli United Bank - Bahrain	AUBK.KW	9.7	1.66	8.15%	1.11	0.221	(0.001)	2,152.0	0.311	0.160	(24.1%)	32,065,126	7,094,828	32.6%	17.1%
= Ithmaar Bank	ITHMR.KW	NM	2.33	0.00%	0.77	0.022	0.000	67.6	0.025	0.021	0.0%	0	0	0.0%	0.7%
Banks		15.0	1.62	3.97%		17,974.5		17,974.5			(18.3%)	61,108,706	19,031,007		10.8%

Boursa Kuwait Daily Bulletin

Tuesday, August 18, 2020

Company	Reuters Ticker	Valuation Multiples				Price (KWD)		MKT Cap (KWD Mn.)	52 Weeks High (KWD)	52 Weeks Low (KWD)	YTD-20 Return #	Daily Trading Data		YTD-20 Capital Turnover	ROE
		Trailing P/E (X)	Trailing P/BV (X)	Dividend Yield	Beta	Closing	DTD Change					Volume (Shrs.)	Value (KWD)		
= Kuwait Insurance Co.	KINS.KW	6.9	0.58	8.43%	NA	0.339	0.000	65.8	0.387	0.298	2.7%	0	0	0.9%	8.5%
▼ Gulf Insurance Group	GIN.S.KW	8.0	0.98	6.40%	0.06	0.568	(0.029)	106.2	0.687	0.556	(13.9%)	8	5	0.1%	12.3%
= Ahleiah Insurance Co.	AINS.KW	7.9	0.74	6.08%	0.12	0.404	0.000	80.8	0.445	0.385	(5.6%)	0	0	0.8%	9.4%
▲ Warba Insurance Co.	WINS.KW	12.5	0.38	0.00%	0.37	0.085	0.001	14.7	0.096	0.053	36.9%	26,488	2,235	1.8%	3.1%
= Kuwait Reinsurance Co.	KWRE.KW	8.4	0.75	2.36%	0.02	0.195	0.000	39.8	0.195	0.126	41.3%	0	0	0.1%	8.9%
▲ First Takaful Insurance Co.	FTIK.KW	5.2	0.50	0.00%	0.33	0.041	0.001	4.4	0.056	0.031	7.6%	3,500	144	2.3%	9.6%
▲ Wethaq Takaful Insurance Co.	WETH.KW	NM	0.24	0.00%	0.38	0.026	0.002	2.9	0.035	0.018	4.8%	122,933	3,038	8.7%	NM
= Bahrain Kuwait Insurance Co.	BKIK.KW	13.1	0.94	7.50%	0.02	0.200	0.000	28.6	0.220	0.190	0.0%	0	0	0.0%	7.2%
Insurance		8.2	0.72	5.93%				343.1			(1.2%)	152,929	5,422		8.9%
= Sokouk Holding Co.	SHCK.KW	NM	0.28	0.00%	1.16	0.023	0.000	13.5	0.040	0.022	(35.2%)	130,022	2,905	19.7%	NM
▼ Kuwait Real Estate Co.	KREK.KW	11.7	0.64	0.00%	0.99	0.087	(0.000)	82.3	0.115	0.070	(17.2%)	1,805,310	157,113	15.7%	5.5%
= United Real Estate Co.	UREK.KW	NM	0.31	0.00%	0.36	0.048	0.000	57.0	0.065	0.045	(21.7%)	0	0	0.6%	NM
= National Real Estate Co.	NREK.KW	8.5	0.35	0.00%	1.15	0.071	0.000	96.7	0.095	0.060	(22.3%)	0	0	16.1%	4.2%
▼ Salhia Real Estate Co.	SREK.KW	9.6	1.27	5.96%	0.34	0.404	(0.003)	207.1	0.460	0.324	(3.1%)	51,500	20,775	4.5%	13.2%
= Tamdeen Real Estate Co.	TAMK.KW	14.4	0.56	1.91%	0.10	0.254	0.000	109.7	0.343	0.248	(20.9%)	0	0	0.5%	3.9%
= Ajial Real Estate Entertainment Co.	AREC.KW	12.4	0.20	0.00%	0.50	0.134	0.000	24.8	0.224	0.121	(26.0%)	0	0	3.8%	1.6%
▼ Al Massaleh Real Estate Co.	MREC.KW	NM	0.31	0.00%	0.23	0.028	(0.001)	6.6	0.040	0.026	(24.9%)	10,918	303	1.4%	NM
▼ Arab Real Estate Co.	ARAB.KW	6.9	0.20	0.00%	1.18	0.023	(0.000)	11.5	0.033	0.020	(23.7%)	33,200	733	19.2%	2.9%
▼ AL-Enma'a Real Estate Co.*	ENMA.KW	17.3	0.39	0.00%	0.63	0.039	(0.001)	17.6	0.079	0.037	(37.6%)	20,000	780	10.2%	2.3%
▼ Mabanee Co.	MABK.KW	12.9	1.54	2.00%	1.09	0.658	(0.011)	727.2	0.878	0.434	(22.9%)	788,897	522,414	16.5%	11.9%
= Injazzat Real Estate Development Co.	INJA.KW	NM	0.52	8.63%	0.20	0.079	0.000	27.3	0.091	0.061	(1.3%)	0	0	1.0%	NM
▲ Investors Holding Group Co.	INVK.KW	NM	0.64	0.00%	1.16	0.013	0.000	7.9	0.017	0.007	58.8%	341,001	4,281	214.1%	NM
▼ The Commercial Real Estate Co.	TIJK.KW	11.0	0.54	5.42%	0.53	0.091	(0.000)	160.4	0.103	0.083	(3.2%)	877,942	79,874	5.7%	5.0%
= Sanam Real Estate Co.	SANK.KW	40.9	0.38	0.00%	0.38	0.030	0.000	3.7	0.043	0.027	(25.0%)	0	0	2.4%	0.9%
= A'ayan Real Estate Co.	AYRE.KW	9.9	0.30	9.75%	0.58	0.051	0.000	21.0	0.080	0.048	(30.9%)	0	0	1.6%	3.0%
= Aqar Real Estate Investment Co.	AQAR.KW	7.3	0.63	5.75%	NA	0.075	0.000	18.4	0.089	0.062	(1.6%)	0	0	1.4%	8.7%
= Kuwait Real Estate Holding Co.	ALAQ.KW	41.4	0.46	0.00%	0.54	0.026	0.000	4.9	0.034	0.023	(10.8%)	0	0	7.8%	1.1%
▲ MAZAYA Holding Co.	MAZA.KW	NM	0.44	0.00%	1.00	0.051	0.001	34.8	0.067	0.047	(14.7%)	1,569	79	13.6%	NM
= Tijara Real Estate & Investment Co.	TIJA.KW	10.3	0.37	5.13%	0.30	0.039	0.000	14.4	0.055	0.034	(22.0%)	0	0	0.2%	3.6%
▲ Al TAMEER Real Estate Investment Co.	AMAR.KW	NM	0.28	0.00%	0.95	0.018	0.000	4.4	0.034	0.013	(31.3%)	51	1	66.0%	NM
▲ Arkan Al-Kuwait Real Estate Co. *	ARKK.KW	9.0	0.59	9.64%	0.22	0.083	0.004	20.8	0.100	0.076	(6.6%)	232	19	8.9%	6.6%
= Al-Argan International Real Estate Co.	ARGK.KW	31.0	0.28	5.24%	0.42	0.092	0.000	24.4	0.143	0.060	(12.4%)	0	0	0.3%	0.9%
= Abyaar Real Estate Development Co.	ABYR.KW	NM	0.16	0.00%	1.20	0.007	0.000	8.1	0.015	0.005	(6.4%)	2,012,338	14,744	48.7%	NM
= Munshaat Real Estate Projects Co.	MUNS.KW	18.4	0.34	0.00%	0.65	0.050	0.000	16.1	0.086	0.046	(32.4%)	0	0	5.0%	1.8%
▼ First Dubai For Real Estate Development	FIRST.KW	38.9	0.48	0.00%	1.44	0.035	(0.001)	35.4	0.055	0.026	(0.6%)	249,362	8,856	23.1%	1.2%
= Kuwait Business Town Real Estate Co.	KBTK.KW	7.4	0.26	0.00%	1.02	0.029	0.000	18.1	0.046	0.027	(34.3%)	1,794,737	51,677	26.4%	3.6%
▲ Real Estate Asset Management Co.	REAM.KW	NM	1.23	0.00%	0.09	0.170	0.021	18.7	0.149	0.060	93.4%	1,110	174	0.1%	NM
▲ MENA Real Estate Co. *	MENK.KW	NM	0.17	0.00%	0.98	0.025	0.001	3.4	0.043	0.021	(39.6%)	8,196	197	70.5%	NM
= Al Mudon International Real Estate Co.	ALMK.KW	NM	0.12	0.00%	0.87	0.016	0.000	1.6	0.029	0.015	(35.1%)	0	0	23.7%	NM
▲ Real Estate Trade Centers Co.	MARA.KW	NM	0.15	0.00%	0.32	0.025	0.001	3.5	0.050	0.018	7.8%	1,370,925	32,905	26.0%	0.1%
▼ Kuwait Remal Real Estate Co.	REMAK.KW	NM	0.19	0.00%	0.84	0.014	(0.001)	4.2	0.029	0.013	(44.3%)	1,595,668	22,444	14.6%	NM
= Mashaer Holding Co.	MASHAER.KW	6.3	0.45	8.62%	0.52	0.058	0.000	10.4	0.086	0.048	(25.3%)	0	0	29.6%	7.1%
= Effect Real Estate Co.	EFFECT.KW	NM	0.29	0.00%	0.45	0.021	0.000	1.7	0.024	0.020	0.0%	0	0	0.0%	NM
▼ Ajwan Gulf Real Estate Co.	AJWN.KW	NM	0.19	0.00%	0.60	0.011	(0.000)	2.3	0.016	0.009	(28.0%)	1,478,850	15,620	115.2%	NM
= Al Masaken Intl. Real Estate Dev. Co.	MASKN.KW	NM	0.44	0.00%	0.13	0.038	0.000	3.8	0.074	0.027	(13.0%)	0	0	0.3%	NM
= Dalqan Real Estate Co.	DALQ.KW	48.3	2.44	0.00%	NA	0.350	0.000	15.8	0.385	0.333	0.0%	0	0	0.0%	5.1%
= Dar Al Thuraya Real Estate Co.	THURY.KW	33.7	1.20	0.00%	0.02	0.128	0.000	18.8	0.190	0.040	82.6%	0	0	2.1%	3.6%
▲ Osos Holding Group Co.	OSOS.KW	7.4	0.78	6.83%	0.26	0.098	0.003	10.2	0.118	0.084	(2.4%)	10,000	951	6.9%	10.5%
Real Estate		23.7	0.65	2.61%				1,868.3			(17.3%)	12,581,828	936,845		2.7%

Boursa Kuwait Daily Bulletin

Tuesday, August 18, 2020

Company	Reuters Ticker	Valuation Multiples				Price (KWD)		MKT Cap (KWD Mn.)	52 Weeks High (KWD)	52 Weeks Low (KWD)	YTD-20 Return #	Daily Trading Data		YTD-20 Capital Turnover	ROE
		Trailing P/E (X)	Trailing P/BV (X)	Dividend Yield	Beta	Closing	DTD Change					Volume (Shrs.)	Value (KWD)		
▼ Kuwait Investment Co.	KINV.KW	3.4	0.48	13.68%	0.71	0.109	(0.001)	60.1	0.172	0.095	(27.3%)	758,751	82,694	20.6%	13.9%
= Commercial Facilities Co.	FACI.KW	7.5	0.61	9.21%	0.52	0.185	0.000	99.3	0.235	0.179	(14.7%)	0	0	4.4%	8.0%
▼ Int'l Financial Advisors Co.	IFIN.KW	NM	0.97	0.00%	1.32	0.030	(0.001)	8.0	0.060	0.027	(43.8%)	162,384	4,874	31.6%	NM
▼ National Investment Co.	NINV.KW	9.0	0.53	7.45%	1.23	0.110	(0.002)	96.4	0.155	0.080	(20.3%)	9,205,544	1,029,554	23.8%	5.9%
= Kuwait Projects Co.(Holding)	KPRO.KW	9.9	0.88	6.60%	0.57	0.149	0.000	298.0	0.231	0.147	(31.0%)	933,917	139,238	7.2%	8.9%
= Coast Invest. & Development Co.	COAS.KW	33.9	0.38	0.00%	1.33	0.032	0.000	19.9	0.045	0.026	(20.5%)	200,010	6,060	17.1%	1.1%
= The Securities House Co.	SECH.KW	NM	0.52	0.00%	1.14	0.038	0.000	21.0	0.063	0.027	(16.7%)	3,012,073	114,656	40.2%	NM
▲ Arzan Financial Group For Fin. & Invest.	ARZA.KW	33.9	0.38	0.00%	1.01	0.046	0.003	37.2	0.047	0.022	95.4%	26,033,729	1,176,788	145.2%	1.1%
▼ Kuwait Financial Centre	MARKZ.KW	5.0	0.37	6.85%	0.77	0.073	(0.001)	35.1	0.121	0.070	(31.1%)	34,655	2,575	22.9%	7.3%
▲ Kuwait & M.E. Financial Inv. Co.	KMEF.KW	48.3	1.97	0.00%	0.61	0.120	0.001	31.7	0.121	0.052	34.1%	2,036,577	244,100	15.5%	4.1%
= First Investment Co.	OLAK.KW	NM	0.42	0.00%	1.02	0.027	0.000	17.6	0.045	0.022	(21.2%)	662,568	17,851	164.9%	NM
= Al-Mal Investment Co.	MALK.KW	NM	0.38	0.00%	1.21	0.009	0.000	2.8	0.016	0.008	(8.1%)	191,150	1,710	75.7%	NM
▲ Gulf Investment House	GIHK.KW	NM	1.19	0.00%	0.99	0.067	0.001	43.4	0.078	0.038	3.9%	3,138,141	204,802	11.2%	0.6%
▲ A'ayan Leasing & Investment Co.	AAYA.KW	NM	0.54	0.00%	1.25	0.046	0.002	37.1	0.066	0.032	(2.4%)	5,628,574	253,365	88.6%	NM
▼ Bayan Investment Co.	BAYK.KW	NM	0.53	0.00%	0.85	0.048	(0.001)	18.8	0.053	0.031	26.0%	100,000	4,800	5.6%	NM
▼ Osoul Investment Co.	OSUL.KW	6.9	0.57	13.63%	0.44	0.080	(0.004)	12.6	0.121	0.065	6.8%	90,000	7,209	25.0%	8.3%
= Kuwait Finance & Investment Co.	KFSK.KW	19.9	0.35	0.00%	0.30	0.043	0.000	13.7	0.058	0.038	(14.1%)	0	0	8.1%	1.8%
= Kamco Investment Co.	KAMC.KW	7.8	0.42	7.22%	0.38	0.069	0.000	23.7	0.111	0.060	(23.0%)	142,886	9,709	10.3%	5.4%
▼ National International Holding Co.	NIHK.KW	8.2	0.36	7.00%	0.68	0.066	(0.002)	14.3	0.085	0.051	(14.3%)	16,950	1,047	3.5%	4.4%
▼ UniCap Investment and Finance	UNICAP.KW	NM	0.37	0.00%	0.64	0.035	(0.003)	8.4	0.057	0.035	(36.4%)	204,000	7,282	6.0%	NM
▲ Al Madar Finance & Investment Co.	MADR.KW	11.7	0.71	6.37%	0.32	0.076	0.002	16.3	0.148	0.062	(18.1%)	512,842	38,745	6.9%	6.1%
▼ Al-Deera Holding	DEER.KW	NM	0.70	0.00%	0.84	0.016	(0.000)	3.2	0.022	0.011	(20.0%)	8,222	131	5.3%	NM
= Al Salam Group Holding Co.	SAGH.KW	NM	0.19	0.00%	1.26	0.022	0.000	6.0	0.039	0.018	(23.9%)	2,344,120	52,308	144.3%	0.1%
▲ Ektitab Holding Co.	EKTT.KW	NM	0.30	0.00%	1.00	0.013	0.000	4.1	0.019	0.010	(14.7%)	830,374	10,727	33.8%	NM
= Al Madina For Finance & Investment Co.	MADI.KW	NM	0.37	0.00%	1.21	0.011	0.000	4.4	0.019	0.009	(28.0%)	249,430	2,644	131.5%	NM
▲ NOOR Financial Investment Co.	NOOR.KW	7.7	0.96	3.99%	1.23	0.150	0.002	62.0	0.184	0.076	26.1%	2,260,651	329,706	48.3%	12.5%
= Tamdeen Investment Co.	TAMI.KW	10.0	0.30	5.00%	0.32	0.239	0.000	82.5	0.400	0.199	(30.7%)	0	0	0.3%	3.0%
▼ Kuwait Syrian Holding Co.	KSHC.KW	NM	0.25	0.00%	0.74	0.029	(0.000)	5.2	0.044	0.022	(7.0%)	6,800	189	24.5%	NM
▲ Asiya Capital Investment Co.	ASIYA.KW	16.9	0.36	0.00%	0.52	0.032	0.001	25.5	0.041	0.029	(22.0%)	44,353	1,391	0.8%	2.1%
= Gulf North Africa Holding Co.	GNAH.KW	70.9	0.73	0.00%	1.10	0.055	0.000	8.3	0.062	0.052	(11.3%)	0	0	3.8%	1.0%
= Amwal International Investment Co.	AMWA.KW	13.3	0.66	0.00%	0.38	0.036	0.000	6.5	0.055	0.030	20.3%	68,416	2,466	0.0%	5.0%
▲ Alimtiq Investment Group	ALIMK.KW	5.1	0.46	8.67%	0.95	0.089	0.001	100.3	0.138	0.071	(29.8%)	839,961	74,107	33.1%	9.1%
= Tamkeen Holding Co.	TAMKE.KW	NM	0.05	0.00%	NA	0.005	0.000	0.3	0.007	0.005	0.0%	0	0	0.0%	NM
▼ Manazel Holding Co.	MANK.KW	19.0	0.65	0.00%	1.39	0.030	(0.000)	12.7	0.048	0.021	(24.7%)	1,126,700	32,623	29.2%	3.4%
▼ National Industries Group	NIND.KW	4.9	0.63	6.29%	1.43	0.159	(0.001)	227.0	0.252	0.121	(34.0%)	1,319,369	210,001	34.1%	12.9%
= Warba Capital Holding Co.	WARBACAP.KW	NM	0.60	0.00%	0.71	0.054	0.000	5.4	0.070	0.045	(16.3%)	0	0	8.2%	NM
= Arabi Holding Group Co.	AGHC.KW	NM	1.38	0.00%	0.15	0.198	0.000	34.2	0.337	0.074	(27.7%)	0	0	3.1%	0.5%
= Privatization Holding Co.	KPPC.KW	NM	0.30	0.00%	0.80	0.043	0.000	25.9	0.059	0.037	(14.1%)	0	0	5.3%	NM
= Credit Rating & Collection Co.	TAHS.KW	NM	1.08	0.00%	NA	0.035	0.000	5.8	0.037	0.015	76.0%	0	0	0.2%	NM
= Egypt Kuwait Holding Co.	ECHK.KW	12.9	2.35	0.00%	0.16	0.374	0.000	383.1	0.500	0.318	(16.9%)	0	0	0.0%	18.2%
▼ GFH Financial Group	GFH.KW	10.2	0.81	8.28%	0.87	0.049	(0.001)	247.7	0.075	0.042	(29.6%)	189,272	9,124	1.3%	8.0%
= Inovest	INOV.KW	8.0	0.41	8.28%	0.71	0.058	0.000	17.3	0.070	0.044	(9.9%)	0	0	3.5%	5.2%
= Al Bareeq Holding	BAREEQ.KW	36.2	1.90	0.00%	0.04	0.105	0.000	79.2	0.110	0.100	5.0%	0	0	1.7%	5.2%
▲ Amar For Finance and Leasing Co.	AMARF.KW	40.5	0.54	0.00%	0.07	0.047	0.002	9.4	0.066	0.037	24.2%	391	18	10.9%	1.3%
= Al-Manar Financing & Leasing Co.	ALMANAR.KW	13.0	0.46	0.00%	NA	0.051	0.000	15.6	0.060	0.037	(2.5%)	0	0	6.4%	3.5%
Financial Services		16.0	0.68	4.53%				2,287.1			(17.4%)	62,352,810	4,072,494		4.3%

Boursa Kuwait Daily Bulletin

Tuesday, August 18, 2020

Company	Reuters Ticker	Valuation Multiples				Price (KWD)		MKT Cap (KWD Mn.)	52 Weeks High (KWD)	52 Weeks Low (KWD)	YTD-20 Return #	Daily Trading Data		YTD-20 Capital Turnover	ROE
		Trailing P/E (X)	Trailing P/BV (X)	Dividend Yield	Beta	Closing	DTD Change					Volume (Shrs.)	Value (KWD)		
▼ Automated Systems Co.	ASCK.KW	NM	0.47	6.56%	0.13	0.061	(0.001)	6.1	0.086	0.051	(13.8%)	61,521	3,552	0.8%	NM
Technology		NM	0.47	6.56%				6.1			(13.8%)	61,521	3,552		NM
▼ Shamal Az-Zour Al-Oula Power and Water Co.	AZNOULA.KW	29.8	4.78	0.00%	NA	0.333	(0.048)	366.3	0.500	0.371	N/A	36,755,056	12,875,187	10.6%	16.1%
Utilities		29.8	4.78	0.00%				366.3			N/A	36,755,056	12,875,187		16.1%
Boursa Kuwait		15.0	1.24	4.09%				30,800.5			(15.26%)	234,985,473	47,897,070		8.3%

Year-to-Date 2020 Top Movers & Most Active Stocks

YTD Top % Gainers	Close (KWD)	Percent Change
Arzan Financial Group For Fin. & Invest.	0.046	95.4%
Real Estate Asset Management Co.	0.170	93.4%
Dar Al Thuraya Real Estate Co.	0.128	82.6%
Credit Rating & Collection Co.	0.035	76.0%
National Shooting Co.	0.017	66.0%
YTD Most Active by Volume	Close (KWD)	Volume (Shrs.)
Ahli United Bank - Bahrain	0.221	3,175,502,140
Kuwait Finance House	0.613	1,606,420,405
Investors Holding Group Co.	0.013	1,333,821,028
Arzan Financial Group For Fin. & Invest.	0.046	1,165,407,787
Gulf Petroleum Investment	0.018	1,121,663,354

YTD Top % Losers	Close (KWD)	Percent Change
IFA Hotels & Resorts Co.	0.023	(58.2%)
Jazeera Airways Co.	0.580	(47.2%)
Kuwait Remal Real Estate Co.	0.014	(44.3%)
Int'l Financial Advisors Co.	0.030	(43.8%)
ALAFCO Aviation Lease & Finance Co.	0.157	(42.3%)
YTD Most Active by Value	Close (KWD)	Value (KWD)
Kuwait Finance House	0.613	1,052,886,104
National Bank of Kuwait	0.829	816,798,358
Ahli United Bank - Bahrain	0.221	685,450,120
Zain	0.589	358,375,937
Agility (PWC Logistics)	0.618	297,722,704

* Different Fiscal Year Company

Disclaimer & Important Disclosures

Kamco Invest is authorized and fully regulated by the Capital Markets Authority ("CMA, Kuwait") and partially regulated by the Central Bank of Kuwait ("CBK").

This document is provided for informational purposes only. Nothing contained in this document constitutes investment, an offer to invest, legal, tax or other advice or guidance and should be disregarded when considering or making investment decisions. In preparing this document, Kamco Invest did not take into account the investment objectives, financial situation and particular needs of any particular person. Accordingly, before acting on this document, investors should independently evaluate the investments and strategies referred to herein and make their own determination of whether it is appropriate in light of their own financial circumstances and objectives. The entire content of this document is subject to copyright with all rights reserved. This research and the information contained herein may not be reproduced, distributed or transmitted in Kuwait or in any other jurisdiction to any other person or incorporated in any way into another document or other material without our prior written consent.

Analyst Certification

Each of the analysts identified in this report certifies, with respect to the sector, companies or securities that the individual analyses, that (1) the views expressed in this report reflect his or her personal views about all of the subject companies and securities and (2) no part of his or her compensation was, is or will be directly or indirectly dependent on the specific recommendations or views expressed in this report.

Kamco Invest Ratings

Kamco Invest research is based on the analysis of regional and country economics, industries and company fundamentals. Kamco Invest company research reflects a long-term (12-month) target price for a company or stock. The ratings bands are:

* **Outperform:** Target Price represents expected returns >= 10% in the next 12 months

* **Neutral:** Target Price represents expected returns between 10% and +10% in the next 12 months

* **Underperform:** Target Price represents an expected return of <-10% in the next 12 months

In certain circumstances, ratings may differ from those implied by a fair value target using the criteria above. Kamco Invest policy is to maintain up-to-date fair value targets on the companies under its coverage, reflecting any material changes to the analyst's outlook on a company. Share price volatility may cause a stock to move outside the rating range implied by Kamco Invest's fair value target. Analysts may not necessarily change their ratings if this happens, but are expected to disclose the rationale behind their view to Kamco Invest clients.

Any terms and conditions proposed by you which are in addition to or which conflict with this Disclaimer are expressly rejected by Kamco Invest and shall be of no force or effect. The information contained in this document is based on current trade, statistical and other public information we consider reliable. We do not represent or warrant that such information is fair, accurate or complete and it should not be relied upon as such. Kamco Invest has no obligation to update, modify or amend this document or to otherwise notify a recipient thereof in the event that any opinion, forecast or estimate set forth herein, changes or subsequently becomes inaccurate. The publication is provided for informational uses only and is not intended for trading purposes. The information on publications does not give rise to any legally binding obligation and/or agreement, including without limitation any obligation to update such information. You shall be responsible for conducting your own investigation and analysis of the information contained or referred to in this document and of evaluating the merits and risks involved in the securities forming the subject matter of this or other such document. Moreover, the provision of certain data/information in the publication may be subject to the terms and conditions of other agreements to which Kamco Invest is a party.

Nothing in this document should be construed as a solicitation or offer, or recommendation, to acquire or dispose of any investment or to engage in any other transaction, or to provide any investment advice or service. This document is directed at Professional Clients and not Retail Clients within the meaning of CMA rules. Any other persons in receipt of this document must not rely upon or otherwise act upon it. Entities and individuals into whose possession this document comes are required to inform themselves about, and observe such restrictions and should not rely upon or otherwise act upon this document where it is unlawful to make to such

Kamco Investment Company (DIFC) Limited ("Kamco Invest DIFC"), Office 205, Level 2, Gate Village 1, Dubai International Financial Centre, a wholly owned subsidiary of Kamco Investment Company KSC (Public), is regulated by the Dubai Financial Services Authority (DFSA). Kamco Invest DIFC may only undertake the financial services activities that fall within the scope of its existing DFSA licence. The information in this document may be distributed by Kamco Invest DIFC on behalf of Kamco Investment Company KSC (Public). This document is intended for Professional Clients or Market Counterparties only as defined by the DFSA, and no other person should act upon it.

Risk Warnings

Any prices, valuations or forecasts are indicative and are not intended to predict actual results, which may differ substantially from those reflected. The value of an investment may go up as well as down. The value of and income from any investment may fluctuate from day to day as a result of changes in relevant economic markets (including, without limitation, foreseeable or unforeseeable changes in interest rates, foreign exchange rates, default rates, prepayment rates, political or financial conditions, etc.).

Past performance is not indicative of future results. Any opinions, estimates, valuations or projections (target prices and ratings in particular) are inherently imprecise and a matter of judgment. They are statements of opinion and not of fact, based on current expectations, estimates and projections, and rely on beliefs and assumptions. Actual outcomes and returns may differ materially from what is expressed or forecasted. There are no guarantees of future performance. Certain transactions, including those involving futures, options, and other derivatives, give rise to substantial risk and are not suitable for all investors. This document does not propose to identify or to suggest all of the risks (direct or indirect) which may be associated with the investments and strategies referred to herein.

Conflict of Interest

Kamco Invest and its affiliates provide full investment banking services, and they and their directors, officers and employees, may take positions which conflict with the views expressed in this document. Salespeople, traders, and other professionals of Kamco Invest may provide oral or written market commentary or trading strategies to our clients and our proprietary trading desks that reflect opinions that are contrary to the opinions expressed in this document. Our asset management area, our proprietary trading desks and investing businesses may make investment decisions that are inconsistent with the recommendations or views expressed in this document. Kamco Invest may have or seek investment banking or other business relationships for which it will receive compensation from the companies that are the subject of this document. Facts and views presented in this document have not been reviewed by, and may not reflect information known to, professionals in other Kamco Invest business areas, including investment banking personnel. United Gulf Bank, Bahrain owns majority of Kamco Invest's shareholding and this ownership may create, or may create the appearance of, conflicts of interest.

No Liability & Warranty

Kamco Invest makes neither implied nor expressed representations or warranties and, to the fullest extent permitted by applicable law, we hereby expressly disclaim any and all express, implied and statutory representations and warranties of any kind, including, without limitation, any warranty as to accuracy, timeliness, completeness, and fitness for a particular purpose and/or non-infringement. Kamco Invest will accept no liability in any event including (without limitation) your reliance on the information contained in this document, any negligence for any damages or loss of any kind, including (without limitation) direct, indirect, incidental, special or consequential damages, expenses or losses arising out of, or in connection with your use or inability to use this document, or in connection with any error, omission, defect, computer virus or system failure, or loss of any profit, goodwill or reputation, even if expressly advised of the possibility of such loss or damages, arising out of or in connection with your use of this document. We do not exclude our duties or liabilities under binding applicable law.