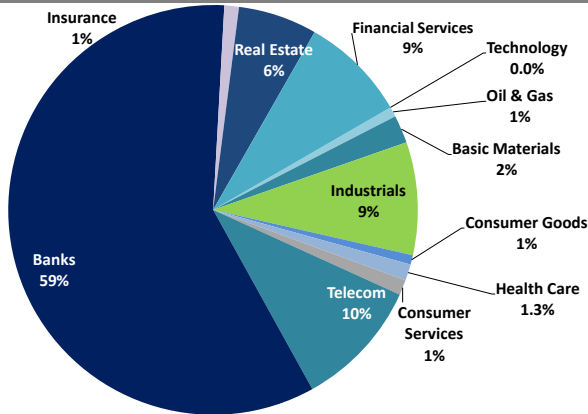


Boursa Kuwait Daily Report

September 16, 2020

Sector Weight by Market Cap



Top 10 Companies by Market Capitalization

Company Name	Market Cap. (Mn KWD)	P/E (X)	ROE* (%)
1- National Bank of Kuwait	5,932.3	19.6	9.8%
2- Kuwait Finance House	4,865.4	24.3	10.7%
3- Zain	2,492.4	12.3	16.6%
4- Ahli United Bank - Bahrain	2,259.1	11.5	16.6%
5- Boubayan Bank	1,933.3	38.0	10.3%
6- Agility (PWC Logistics)	1,275.2	20.9	5.5%
7- Commercial Bank of Kuwait	996.0	NM	NM
8- Mabanee Co.	762.5	25.3	6.5%
9- Gulf Bank	667.5	13.0	8.6%
10- Ahli United Bank - Kuwait	621.6	14.8	9.7%
Total	21,805	19.28	10.2%

*: ROE is calculated based on TTM 1H-2020 net profit & shareholders' equity as of 30-June-20

Top Movers and Most Active Stocks

Today's Top % Gainers	Close (KWD)	Change (KWD)	Percent Change
Al Masaken Intl. Real Estate Dev. Co.	0.030	0.004	13.2%
Kuwait Remal Real Estate Co.	0.022	0.002	10.0%
Sanam Real Estate Co.	0.031	0.003	8.8%
Combined Group Contracting Co.	0.171	0.013	8.2%
UniCap Investment and Finance	0.045	0.003	5.9%




Today's Top % Losers	Close (KWD)	Change (KWD)	Percent Change
Dar Al Thuraya Real Estate Co.	0.092	(0.022)	(19.2%)
Amwal International Investment Co.	0.030	(0.005)	(14.0%)
Investors Holding Group Co.	0.013	(0.002)	(11.6%)
Automated Systems Co.	0.066	(0.006)	(8.6%)
Al Madar Finance & Investment Co.	0.086	(0.006)	(6.1%)

Today's Most Active by Volume	Close (KWD)	Percent Change	Volume (Shares)
Investors Holding Group Co.	0.013	(11.6%)	117,538,876
A'ayan Leasing & Investment Co.	0.084	(4.0%)	69,664,500
Ahli United Bank - Bahrain	0.232	2.7%	27,834,780
Gulf Bank	0.219	0.9%	27,083,562
Gulf Petroleum Investment	0.019	(5.0%)	20,974,950

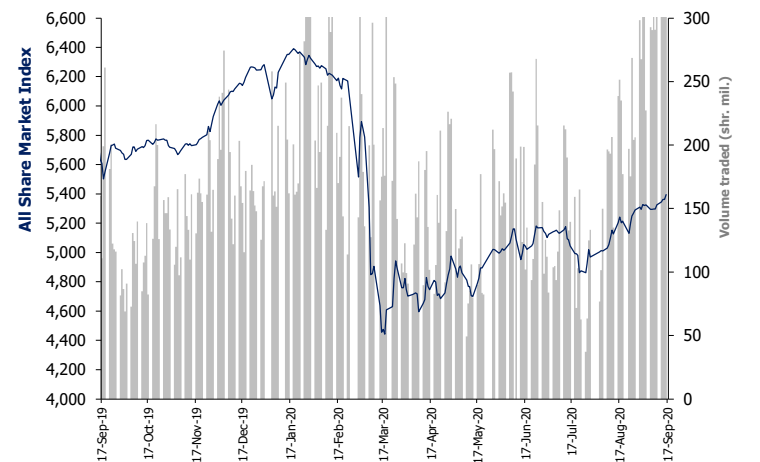
Source: Boursa Kuwait, Kamco Invest Research

Market Capitalization - Sector Returns

	Market Cap. (KWD Mn)	DTD ▲	DTD % Chg	MTD % Chg	YTD % Chg
Boursa Kuwait	32,182.1	▲	0.6%	2.7%	(11.5%)
Oil & Gas	246.0	▼	(0.3%)	1.8%	(4.6%)
Basic Materials	696.9	▲	1.1%	0.3%	(13.7%)
Industrials	2,837.1	▲	0.2%	3.0%	(13.8%)
Consumer Goods	236.3	▼	(1.1%)	(4.2%)	19.7%
Health Care	411.2	=	0.0%	0.0%	(6.3%)
Consumer Services	378.7	▲	0.5%	2.9%	(31.4%)
Telecommunications	3,235.2	▲	0.5%	(1.5%)	(5.4%)
Banks	18,753.4	▲	0.8%	1.8%	(14.7%)
Insurance	360.6	▼	(0.4%)	2.5%	3.8%
Real Estate	1,988.0	▲	1.3%	6.9%	(12.0%)
Financial Services	2,665.8	▼	(0.0%)	13.8%	(3.7%)
Technology	6.6	▼	(8.6%)	(3.7%)	(7.1%)
Utilities	366.3	▼	-1.2%	4.1%	N/A

Market Breadth	 56	 61	 57		
Benchmark Return	Closing	DTD	DTD	MTD	YTD
	Value	Chg	% Chg	% Chg	% Chg
Premier Market Index	5,933.97	51.7	0.9%	1.4%	(14.9%)
Main 50 Index	4,374.66	4.1	0.1%	4.6%	(12.3%)
Main Market Index	4,328.82	(3.5)	(0.1%)	3.4%	(11.8%)
All Share Market Index	5,394.83	33.7	0.6%	1.9%	(14.1%)
Market Cap (KWD Mn)	32,182.09	197.9	0.6%	2.7%	(11.5%)

Index Performance relative to Volume



Market Trading Data and Volatility

Trading Indicators	Today's Value	DTD Chg	DTD % Chg	Average Daily YTD 2020	Average Daily YTD 2019
Volume (Shrs Mn)	450.6	(51.4)	(10.2%)	186.7	88.6
Value Traded (KWD Mn)	56.4	(1.7)	(2.9%)	35.1	16.9
No. of Trades	14,350	(628)	(4.19%)	8,432	3,810

Today's Most Active by Value	Close (KWD)	Percent Change	Value (KWD)
Kuwait Finance House	0.634	0.6%	8,174,203
Ahli United Bank - Bahrain	0.232	2.7%	6,460,825
Gulf Bank	0.219	0.9%	5,941,052
A'ayan Leasing & Investment Co.	0.084	(4.0%)	5,833,181
Boursa Kuwait Securities Co.	1.010	(1.9%)	2,735,723

Boursa Kuwait - Premier Market

Wednesday, September 16, 2020

	Premier Market Stocks	Closing Price			Market Capitalization			Valuation Multiples				ROE	YTD-20 Price Return	YTD-20 Trading Indicators	
		KWD	DTD Chg. (KWD)	D-T-D Return	KWD Mn	Weight in Premier Index	Weight in Boursa Kuwait	P/E (X)	P/BV (X)	Yield	Beta			Volume (Mn Shrs)	Value (KWD Mn)
▲	National Bank of Kuwait	0.866	0.005	0.6%	5,932	25.1%	18.4%	19.6	1.93	3.8%	1.28	9.8%	(15.0%)	1,057.88	892.46
▲	Gulf Bank	0.219	0.002	0.9%	668	2.8%	2.1%	13.0	1.11	4.8%	1.13	8.6%	(27.7%)	1,166.81	261.74
▼	Kuwait International Bank	0.184	(0.002)	(1.1%)	208	0.9%	0.6%	27.3	0.81	3.3%	0.99	3.0%	(29.5%)	1,135.01	217.23
▲	Burgan Bank	0.204	0.001	0.5%	536	2.3%	1.7%	8.5	0.75	5.9%	1.05	8.8%	(32.9%)	391.72	86.02
▲	Kuwait Finance House	0.634	0.004	0.6%	4,865	20.6%	15.1%	24.3	2.61	2.8%	1.42	10.7%	(14.0%)	1,758.15	1,147.77
▲	Boubyan Bank	0.593	0.003	0.5%	1,933	8.2%	6.0%	38.0	3.90	1.3%	1.04	10.3%	4.6%	180.57	96.96
▲	Kuwait Projects Co. (Holding)	0.153	0.001	0.7%	306	1.3%	1.0%	5.2	1.41	6.4%	0.57	27.3%	(29.2%)	201.62	33.31
▲	Mabane Co.	0.690	0.033	5.0%	763	3.2%	2.4%	25.3	1.65	1.9%	1.10	6.5%	(19.2%)	195.30	127.65
▲	National Industries Group (Holding)	0.173	0.004	2.4%	247	1.0%	0.8%	NM	0.78	5.8%	1.42	NM	(28.2%)	561.29	102.08
▲	Boubyan Petrochemical Co.	0.557	0.017	3.1%	298	1.3%	0.9%	25.2	1.33	6.1%	0.73	5.3%	(16.6%)	70.83	40.00
▼	Qurain Petrochemicals Industries Co.	0.276	(0.002)	(0.7%)	303	1.3%	0.9%	11.8	0.72	5.5%	0.76	6.1%	(11.0%)	133.02	34.83
▲	Agility Public Warehousing Co.	0.629	0.004	0.6%	1,275	5.4%	4.0%	20.9	1.15	0.7%	1.47	5.5%	(11.6%)	487.65	318.27
▲	Mobile Telecommunications Co.	0.576	0.003	0.5%	2,492	10.5%	7.7%	12.3	2.03	5.7%	1.39	16.6%	(4.0%)	743.31	397.46
▲	Human Soft Holding Co.	2.830	0.035	1.3%	346	1.5%	1.1%	13.1	3.93	6.5%	0.48	29.9%	(6.0%)	41.72	115.05
▲	Ahli United Bank (B.S.C)	0.232	0.006	2.7%	2,259	9.6%	7.0%	11.5	1.90	7.8%	1.11	16.6%	(20.3%)	3,518.16	763.07
▲	Warba Bank	0.230	0.001	0.4%	362	1.5%	1.1%	NM	1.99	0.0%	0.98	NM	(12.2%)	607.64	130.65
▼	Mezzan Holding Co.	0.616	(0.009)	(1.4%)	192	0.8%	0.6%	29.8	1.74	2.4%	0.46	5.8%	23.2%	57.68	31.90
▼	Integrated Holding Co.	0.375	(0.007)	(1.8%)	83	0.3%	0.3%	31.3	1.36	8.0%	0.46	4.3%	(31.9%)	55.56	25.34
▼	Shamal Az-Zour Al-Oula Power and Water	0.333	(0.004)	(1.2%)	366	1.5%	1.1%	29.8	4.78	0.0%	NA	16.1%	NA	318.14	109.93
▼	Boursa Kuwait Securities Co.	1.010	(0.020)	(1.9%)	203	0.9%	0.6%	17.8	6.20	0.0%	NA	34.8%	NA	13.28	14.03
Subtotal- Premier Market Stocks		5,933.97	51.69	0.88%	23,637	100%	73%	18.8	1.86	3.82%		9.9%	-14.1%	12,695.33	4,945.75
Remaining of the Market					8,545		27%	(109.5)	0.83	4.17%		-0.8%		18,851.42	989.98

Source: Kamco Research

Boursa Kuwait Daily Bulletin

Wednesday, September 16, 2020

Company	Reuters Ticker	Valuation Multiples				Price (KWD)		MKT Cap (KWD Mn.)	52 Weeks High (KWD)	52 Weeks Low (KWD)	YTD-20 Return #	Daily Trading Data		YTD-20 Capital Turnover	ROE
		Trailing P/E (X)	Trailing P/BV (X)	Dividend Yield	Beta	Closing	DTD Change					Volume (Shrs.)	Value (KWD)		
▲ Senergy Holding Co.	SENE.KW	NM	0.37	0.00%	1.14	0.019	0.001	3.7	0.027	0.014	(15.5%)	177,800	3,312	28.1%	NM
= Independent Petroleum Group	IPGK.KW	14.1	0.98	5.62%	0.28	0.430	0.000	96.6	0.497	0.375	(10.8%)	0	0	0.3%	7.0%
= National Petroleum Services Co.	NAPS.KW	12.2	2.86	6.41%	0.22	1.060	0.000	106.0	1.389	0.903	(9.4%)	0	0	0.2%	23.4%
▲ The Energy House Co.	ENER.KW	NM	0.69	0.00%	0.94	0.022	0.000	16.1	0.036	0.014	(5.7%)	182,580	3,652	5.9%	NM
▼ Gulf Petroleum Investment	GPIK.KW	NM	0.14	0.00%	1.07	0.019	(0.001)	5.7	0.024	0.012	(5.0%)	20,974,950	410,749	554.6%	NM
▼ Burgan Co. for Drilling, Tdg. & Maint. *	ABAR.KW	13.6	0.28	0.00%	NA	0.074	(0.004)	17.9	0.098	0.060	(7.6%)	2,000	148	0.2%	2.0%
Oil & Gas		29.3	0.89	4.96%				246.0			(4.6%)	21,337,330	417,861		3.1%
▲ Kuwait Foundry Co.	KFDC.KW	38.5	0.90	6.00%	0.66	0.250	0.012	18.1	0.510	0.192	(25.4%)	1,001	242	2.4%	2.3%
▲ Boubyan Petrochemicals Co.*	BPCC.KW	25.2	1.33	6.11%	0.73	0.557	0.017	297.9	0.800	0.395	(16.6%)	533,239	293,710	13.2%	5.3%
= Al Kout for Industrial Projects Co.	ALKK.KW	27.8	2.84	6.50%	0.02	0.769	0.000	77.6	0.850	0.769	(9.5%)	0	0	0.0%	10.2%
▼ Qurain Petrochemical Industries Co. *	ALQK.KW	11.8	0.72	5.49%	0.76	0.276	(0.002)	303.4	0.340	0.163	(11.0%)	1,415,735	388,785	12.1%	6.1%
Basic Materials		17.0	1.01	5.88%				696.9			(13.7%)	1,949,975	682,737		5.9%
▼ Specialities Group Holding Co.	SPEC.KW	11.3	0.34	0.00%	0.39	0.061	(0.002)	10.1	0.078	0.050	(20.2%)	1,170,272	71,367	26.5%	3.0%
▼ Kuwait Cement Co.	KCEM.KW	NM	0.82	2.49%	0.46	0.195	(0.003)	143.0	0.270	0.144	(20.7%)	1,306,229	256,178	8.8%	NM
= Gulf Cable & Electrical Ind. Co.	CABL.KW	33.8	0.86	6.00%	0.91	0.667	0.000	140.0	0.742	0.390	36.7%	886,888	598,095	43.4%	2.6%
▼ Heavy Eng'g Ind. & Shipbuilding Co.	SHIP.KW	6.1	0.99	8.15%	0.60	0.368	(0.002)	66.3	0.419	0.298	(9.1%)	636,771	233,080	23.9%	16.2%
▼ Kuwait Portland Cement Co.	PCEM.KW	NM	1.26	5.19%	0.46	0.770	(0.009)	77.2	1.208	0.683	(21.6%)	35,593	27,342	5.7%	0.9%
= Shuaiba Industrial Co.	PAPE.KW	25.1	0.73	3.79%	0.12	0.130	0.000	13.1	0.180	0.122	(16.1%)	0	0	0.6%	2.9%
= Metal & Recycling Co.	MRCK.KW	NM	0.48	0.00%	0.21	0.041	0.000	4.8	0.070	0.020	(18.4%)	0	0	1.8%	NM
▼ ACICO Industries Co.	ACIC.KW	NM	0.42	4.94%	0.37	0.106	(0.002)	32.0	0.144	0.081	(20.3%)	18,958	2,000	5.8%	NM
= Hilal Cement Co.	HCCM.KW	NM	0.94	15.08%	0.12	0.100	0.000	10.1	0.126	0.063	(0.5%)	0	0	0.5%	NM
▲ National Industries Co.	NIBM.KW	NM	0.73	6.22%	0.15	0.155	0.001	57.7	0.173	0.143	(6.1%)	50,000	7,750	0.4%	NM
▼ Equipment Holding Co.	EQUI.KW	NM	0.37	0.00%	1.03	0.016	(0.001)	2.2	0.024	0.013	(26.0%)	1,070,044	17,411	25.3%	NM
= National Co. for Consumer Industries	NCCI.KW	56.5	0.56	0.00%	NA	0.051	0.000	4.6	0.100	0.010	(6.6%)	0	0	0.7%	1.0%
▼ Salbookh Trading Co.	SALB.KW	NM	0.52	0.00%	0.61	0.035	(0.001)	3.7	0.051	0.026	(30.1%)	290,790	9,893	25.7%	NM
▲ Agility (PWC Logistics)	AGLT.KW	20.9	1.15	0.66%	1.47	0.629	0.004	1,275.2	0.748	0.357	(11.6%)	2,803,500	1,757,937	24.1%	5.5%
▼ Educational Holding Group*	EDUK.KW	8.6	1.60	20.43%	0.45	0.291	(0.009)	71.4	0.475	0.228	(33.7%)	11,900	3,479	0.9%	18.6%
▼ National Cleaning Co.	CLEA.KW	66.7	0.38	9.04%	0.82	0.054	(0.002)	13.4	0.088	0.047	(22.2%)	55,755	2,998	22.7%	0.6%
▼ Kuwait & Gulf Link Transport Co.	KGLK.KW	NM	0.22	0.00%	0.76	0.045	(0.001)	13.0	0.078	0.042	(32.7%)	25,500	1,149	13.4%	NM
▼ Kuwait Co. For Process Plant Const. & Cont.	KCPK.KW	6.7	1.25	7.09%	0.47	0.310	(0.004)	34.2	0.338	0.175	28.7%	167,915	51,694	36.0%	18.7%
▲ Humansoft Holding Co.	HUMN.KW	13.1	3.93	6.51%	0.48	2.830	0.035	345.9	3.470	1.944	(6.0%)	342,231	956,040	34.1%	29.9%
= Gulf Franchising Co.	GFCI.KW	NM	1.24	0.00%	NA	0.050	0.000	2.0	0.148	0.001	(33.0%)	0	0	0.6%	NM
▼ National Shooting Co.	SHOOTING.KW	NM	0.27	0.00%	1.24	0.015	(0.000)	4.2	0.018	0.007	50.0%	707,602	10,085	87.6%	NM
▲ Combined Group Contracting Co.	CGCK.KW	NM	0.73	11.11%	0.59	0.171	0.013	29.3	0.251	0.138	(31.2%)	10,893,356	1,811,498	96.1%	NM
= United Projects Group	UPAC.KW	60.4	1.28	3.66%	NA	0.465	0.000	91.7	0.512	0.367	(9.2%)	0	0	0.0%	2.1%
▲ ALAFCO Aviation Lease & Finance Co.*	ALAF.KW	26.1	0.49	4.91%	0.85	0.163	0.003	155.2	0.278	0.138	(40.1%)	3,385,015	547,996	28.4%	1.9%
▼ Mubarrad Holding Co.	MBRD.KW	14.5	0.49	8.17%	0.94	0.060	(0.003)	9.9	0.089	0.049	(31.5%)	925,782	56,358	82.2%	3.4%
= KGL Logistics Co.	LOGK.KW	NM	0.20	0.00%	0.77	0.027	0.000	20.1	0.043	0.023	(26.5%)	0	0	26.6%	NM
▼ Integrated holding Co.	INTEGRATED.KW	31.3	1.36	8.00%	0.46	0.375	(0.007)	82.5	0.600	0.342	(31.9%)	245,074	92,159	25.3%	4.3%
= Sharjah Cement Co.	SCEM.KW	NM	0.22	0.00%	0.22	0.042	0.000	25.7	0.064	0.042	0.0%	0	0	0.0%	NM
▲ Gulf Cement Co.	GCEM.KW	NM	0.36	0.00%	0.20	0.034	0.000	27.5	0.062	0.029	(39.0%)	220,090	7,306	2.0%	NM
▼ Umm Al-Qaiwain General Investments Co.	QIC.KW	NM	0.53	6.79%	0.17	0.074	(0.004)	26.7	0.096	0.052	10.3%	49,171	3,437	0.0%	0.4%
= Fujairah Cement Industries Co.	FCEM.KW	NM	0.14	0.00%	0.48	0.033	0.000	11.9	0.052	0.029	(26.0%)	0	0	5.9%	NM
= Ras-Al-Khaimah for White Cement Co.	RKWC.KW	67.2	0.54	7.69%	0.11	0.065	0.000	32.5	0.080	0.055	0.0%	0	0	0.0%	0.8%
Industrials		52.6	0.92	3.65%				2,837.1			(13.8%)	25,298,436	6,525,252		1.7%

Boursa Kuwait Daily Bulletin

Wednesday, September 16, 2020

Company	Reuters Ticker	Valuation Multiples				Price (KWD)		MKT Cap (KWD Mn.)	52 Weeks High (KWD)	52 Weeks Low (KWD)	YTD-20 Return #	Daily Trading Data		YTD-20 Capital Turnover	ROE
		Trailing P/E (X)	Trailing P/BV (X)	Dividend Yield	Beta	Closing	DTD Change					Volume (Shrs.)	Value (KWD)		
= Palms Agro Production Co.	PAPK.KW	15.2	0.54	0.00%	0.23	0.060	0.000	3.1	0.062	0.025	48.0%	0	0	0.7%	3.6%
▲ Livestock Transport & Trading Co.	CATT.KW	24.0	0.95	0.00%	0.27	0.185	0.001	40.1	0.200	0.152	5.7%	43,000	7,873	12.1%	4.0%
= Danah Alsafat Foodstuff Co.	DANK.KW	NM	0.63	0.00%	0.74	0.012	0.000	1.3	0.029	0.010	(25.3%)	0	0	97.4%	NM
▼ Mezzan Holding Co.	MEZZ.KW	29.8	1.74	2.39%	0.46	0.616	(0.009)	191.8	0.665	0.428	23.2%	137,557	85,095	18.5%	5.8%
Consumer Goods		NM	1.48	1.94%		236.3		19.7%	180,557	92,968	NM				
= Advanced Technology Co.	ATCK.KW	37.5	1.61	1.59%	0.00	0.627	0.000	94.1	0.900	0.580	(22.6%)	0	0	0.0%	4.3%
= Yiacco Medical Co.	YIAC.KW	NM	6.55	0.00%	NA	0.707	0.000	12.1	0.777	0.672	0.1%	0	0	0.0%	NM
= Al-Maidan Clinic For Oral Health Services Co.	MIDAN.KW	51.1	7.58	0.00%	0.00	1.220	0.000	305.0	1.220	1.220	0.0%	0	0	0.0%	14.8%
Health Care		49.2	4.09	0.36%		411.2		(6.3%)	0	0	8.3%				
▲ Kuwait National Cinema Co.	KCIN.KW	30.9	0.98	4.61%	0.27	0.700	0.002	70.7	1.050	0.600	(33.2%)	8,113	5,674	1.0%	3.2%
= Kuwait Hotels Co.	KHOT.KW	NM	1.30	0.00%	NA	0.086	0.000	5.0	0.101	0.069	(14.0%)	0	0	0.1%	NM
= Sultan Center Food Products Co.	SCFK.KW	17.9	0.70	0.00%	0.53	0.056	0.000	32.4	0.060	0.036	7.7%	0	0	7.0%	3.9%
= Kuwait Cable Vision Co.	KWTV.KW	NM	0.52	0.00%	0.21	0.014	0.000	0.5	0.026	0.012	0.0%	0	0	0.0%	NM
▲ IFA Hotels & Resorts Co.*	IFAH.KW	NM	1.80	0.00%	0.23	0.024	0.001	15.4	0.062	0.021	(55.8%)	35,460	803	3.4%	NM
= Oula Fuel Marketing Co.	OULA.KW	31.8	0.71	4.48%	0.46	0.110	0.000	44.5	0.134	0.095	(13.4%)	375,386	40,918	4.3%	2.2%
▲ Kuwait Resorts Co.	MUNK.KW	17.2	0.39	0.00%	0.69	0.054	0.002	11.4	0.060	0.038	(6.5%)	6,572,459	354,612	45.3%	2.3%
▲ Jazeera Airways Co.	JAZK.KW	NM	4.42	6.04%	0.71	0.579	0.005	115.8	1.110	0.372	(47.3%)	220,482	126,566	23.6%	NM
▼ Soor Fuel Marketing Co.	SOOR.KW	20.4	0.68	4.54%	0.46	0.109	(0.001)	44.1	0.129	0.096	(12.8%)	134,095	14,626	4.8%	3.3%
= Future Kid Entertainment and R.E Co.	KIDK.KW	NM	0.53	15.47%	0.02	0.077	0.000	8.9	0.110	0.069	(13.3%)	0	0	0.6%	NM
= Al Rai Media Group Co.	ALRA.KW	NM	0.86	0.00%	0.26	0.037	0.000	8.6	0.045	0.031	(2.4%)	0	0	0.3%	NM
▼ Jiyad Holding Co	JIYAD.KW	11.4	0.36	0.00%	0.62	0.040	(0.000)	14.1	0.047	0.029	3.1%	671,462	26,175	16.4%	3.2%
▼ Al Eid Food Co.	ALEID.KW	5.0	0.39	0.00%	NA	0.072	(0.002)	7.2	0.096	0.046	(8.9%)	268,026	19,650	6.5%	7.8%
Consumer Services		NM	0.95	4.13%		378.7		(31.4%)	8,285,483	589,024	NM				
▲ Zain	ZAIN.KW	12.3	2.03	5.73%	1.39	0.576	0.003	2,492.4	0.604	0.407	(4.0%)	1,785,585	1,028,371	17.2%	16.6%
▲ National Mobile Telecom Co.	OORE.KW	21.1	0.56	8.22%	0.46	0.605	0.005	304.9	0.835	0.550	(26.9%)	85,103	51,172	3.2%	2.7%
▼ AAN digital services Co.	AAN.KW	NM	0.36	0.00%	1.33	0.012	(0.001)	10.4	0.021	0.009	(11.9%)	16,863,745	202,181	160.0%	NM
= Kuwait Telecommunication Co.	STC.KW	10.7	2.04	5.92%	0.58	0.844	0.000	421.5	0.870	0.680	7.1%	26,404	22,290	2.2%	19.2%
= Hayat Communications Co.	HAYK.KW	7.9	0.56	0.00%	1.22	0.065	0.000	6.0	0.098	0.030	(13.3%)	0	0	6.4%	7.0%
Telecommunications		12.6	1.60	5.96%		3,235.2		(5.4%)	18,760,837	1,304,013	12.8%				
▲ National Bank of Kuwait	NBKK.KW	19.6	1.93	3.80%	1.28	0.866	0.005	5,932.3	1.062	0.654	(15.0%)	2,814,897	2,438,038	15.4%	9.8%
▲ Gulf Bank	GBKK.KW	13.0	1.11	4.78%	1.13	0.219	0.002	667.5	0.317	0.180	(27.7%)	27,083,562	5,941,052	38.3%	8.6%
= Commercial Bank of Kuwait	CBKK.KW	NM	1.47	3.98%	0.39	0.500	0.000	996.0	0.555	0.465	(5.5%)	10,150	5,075	1.4%	NM
▲ Ahli Bank of Kuwait	ABKK.KW	NM	0.54	3.69%	0.62	0.188	0.004	304.4	0.310	0.156	(26.6%)	995,925	185,531	6.8%	0.3%
▲ Ahli United Bank - Kuwait	BKME.KW	14.8	1.44	4.51%	0.86	0.287	0.002	621.6	0.330	0.225	(11.9%)	250,962	71,490	5.8%	9.7%
▼ Kuwait International Bank	KIBK.KW	27.3	0.81	3.28%	0.99	0.184	(0.002)	208.4	0.271	0.162	(29.5%)	11,915,943	2,206,709	100.2%	3.0%
▲ Burgan Bank	BURG.KW	8.5	0.75	5.87%	1.05	0.204	0.001	535.5	0.332	0.175	(32.9%)	1,516,048	308,900	14.9%	8.8%
▲ Kuwait Finance House	KFH.KW	24.3	2.61	2.84%	1.42	0.634	0.004	4,865.4	0.761	0.473	(14.0%)	12,898,646	8,174,203	22.9%	10.7%
▲ Boubyan Bank	BOUK.KW	38.0	3.90	1.34%	1.04	0.593	0.003	1,933.3	0.638	0.380	4.6%	457,897	270,713	5.5%	10.3%
▲ Warba Bank	WARB.KW	NM	1.99	0.00%	0.98	0.230	0.001	362.3	0.279	0.164	(12.2%)	3,889,416	898,457	38.6%	NM
▲ Ahli United Bank - Bahrain	AUBK.KW	11.5	1.90	7.77%	1.11	0.232	0.006	2,259.1	0.311	0.160	(20.3%)	27,834,780	6,460,825	36.1%	16.6%
Banks		20.8	1.87	3.81%		18,753.4		(14.7%)	89,668,226	26,960,992	9.0%				

Boursa Kuwait Daily Bulletin

Wednesday, September 16, 2020

Company	Reuters Ticker	Valuation Multiples				Price (KWD)		MKT Cap (KWD Mn.)	52 Weeks High (KWD)	52 Weeks Low (KWD)	YTD-20 Return #	Daily Trading Data		YTD-20 Capital Turnover	ROE
		Trailing P/E (X)	Trailing P/BV (X)	Dividend Yield	Beta	Closing	DTD Change					Volume (Shrs.)	Value (KWD)		
▼ Kuwait Insurance Co.	KINS.KW	6.1	0.79	8.09%	NA	0.353	(0.017)	68.5	0.387	0.300	7.0%	5,000	1,765	1.2%	12.8%
▲ Gulf Insurance Group	GINS.KW	7.6	1.03	5.96%	0.08	0.610	0.008	114.1	0.680	0.550	(7.6%)	3,000	1,830	0.1%	13.6%
= Ahleiah Insurance Co.	AINS.KW	7.9	0.80	5.71%	0.12	0.410	0.000	86.1	0.424	0.367	0.6%	0	0	0.8%	10.1%
▲ Warba Insurance Co.	WINS.KW	12.4	0.39	9.03%	0.36	0.076	0.001	13.5	0.094	0.051	25.6%	60,000	4,545	2.0%	3.1%
= Kuwait Reinsurance Co.	KWRE.KW	8.7	0.79	2.18%	0.02	0.211	0.000	43.0	0.211	0.126	52.9%	0	0	0.1%	9.1%
= First Takaful Insurance Co.	FTIK.KW	NM	0.47	0.00%	0.33	0.040	0.000	4.2	0.056	0.031	4.5%	0	0	2.6%	NM
▲ Wethaq Takaful Insurance Co.	WETH.KW	NM	0.22	0.00%	0.38	0.023	0.001	2.6	0.035	0.018	(6.8%)	192,900	4,304	14.2%	NM
= Bahrain Kuwait Insurance Co.	BKIK.KW	12.0	0.94	7.50%	0.02	0.200	0.000	28.6	0.220	0.190	0.0%	0	0	0.0%	7.8%
Insurance		9.2	0.81	5.98%				360.6			3.8%	260,900	12,444		8.8%
▲ Sokouk Holding Co.	SHCK.KW	NM	0.39	0.00%	1.16	0.026	0.000	15.7	0.040	0.022	(25.0%)	1,447,717	38,496	30.2%	NM
▼ Kuwait Real Estate Co.	KREK.KW	26.4	0.75	0.00%	0.99	0.101	(0.000)	95.6	0.115	0.070	(3.9%)	2,312,656	234,305	19.6%	2.8%
▼ United Real Estate Co.	UREK.KW	NM	0.32	0.00%	0.38	0.050	(0.000)	58.8	0.063	0.045	(19.2%)	40,000	1,980	0.6%	NM
▲ National Real Estate Co.	NREK.KW	24.4	0.39	0.00%	1.15	0.074	0.001	105.1	0.090	0.058	(15.6%)	1,296,064	94,681	16.4%	1.6%
▼ Salhia Real Estate Co.	SREK.KW	6.0	1.20	6.16%	0.34	0.391	(0.002)	200.5	0.460	0.324	(6.2%)	131,581	51,388	5.3%	20.2%
= Tamdeen Real Estate Co.	TAMK.KW	NM	0.76	1.96%	0.10	0.248	0.000	107.1	0.343	0.241	(22.7%)	4,033	1,000	0.5%	NM
▼ Ajial Real Estate Entertainment Co.	AREC.KW	19.4	0.21	0.00%	0.50	0.136	(0.003)	26.4	0.213	0.115	(21.1%)	40,000	5,443	3.8%	1.1%
▼ Al Massaleh Real Estate Co.	MREC.KW	NM	0.39	0.00%	0.24	0.034	(0.002)	8.1	0.040	0.026	(7.6%)	5,000	171	1.5%	NM
▼ Arab Real Estate Co.	ARAB.KW	NM	0.25	0.00%	1.18	0.025	(0.001)	12.6	0.033	0.020	(16.3%)	495,416	12,379	23.0%	NM
▲ AL-Enma'a Real Estate Co.*	ENMA.KW	20.6	0.46	0.00%	0.64	0.047	0.000	20.9	0.079	0.037	(25.6%)	1,771,852	82,273	25.9%	2.3%
▲ Mabanee Co.	MABK.KW	25.3	1.65	1.91%	1.10	0.690	0.033	762.5	0.878	0.434	(19.2%)	2,251,423	1,521,486	17.7%	6.5%
▼ Injazzat Real Estate Development Co.	INJA.KW	NM	0.49	9.02%	0.20	0.076	(0.001)	26.1	0.091	0.061	(5.5%)	10,051	765	1.1%	NM
▼ Investors Holding Group Co.	INVK.KW	NM	0.65	0.00%	1.16	0.013	(0.002)	8.1	0.032	0.007	62.5%	117,538,876	1,641,972	278.5%	NM
▼ The Commercial Real Estate Co.	TIJK.KW	19.9	0.65	4.67%	0.53	0.105	(0.003)	185.9	0.111	0.083	12.2%	1,847,068	193,845	8.1%	3.3%
▲ Sanam Real Estate Co.	SANK.KW	NM	0.42	0.00%	0.38	0.031	0.003	3.8	0.043	0.027	(22.5%)	1	0	2.5%	NM
▲ A'ayan Real Estate Co.	AYRE.KW	NM	0.36	8.22%	0.57	0.060	0.001	24.9	0.080	0.048	(18.1%)	213,500	12,664	3.5%	NM
▼ Aqar Real Estate Investment Co.	AQAR.KW	6.3	0.53	6.94%	NA	0.062	(0.000)	15.3	0.089	0.058	(18.5%)	30,000	1,863	1.7%	8.5%
▲ Kuwait Real Estate Holding Co.	ALAQ.KW	NM	0.62	0.00%	0.53	0.026	0.000	5.0	0.034	0.022	(8.4%)	133,350	3,308	8.3%	NM
▼ MAZAYA Holding Co.	MAZA.KW	NM	0.50	0.00%	0.99	0.054	(0.001)	37.1	0.067	0.047	(9.0%)	371,588	19,956	15.5%	NM
▼ Tijara Real Estate & Investment Co.	TJUA.KW	14.0	0.37	5.13%	0.29	0.039	(0.002)	14.4	0.055	0.034	(22.0%)	33,047	1,289	0.2%	2.6%
▼ Al TAMEER Real Estate Investment Co.	AMAR.KW	NM	0.33	0.00%	0.94	0.020	(0.000)	4.7	0.034	0.013	(26.0%)	1,641,405	31,927	87.8%	NM
= Arkan Al-Kuwait Real Estate Co. *	ARKK.KW	9.2	0.64	9.36%	0.22	0.086	0.000	21.5	0.100	0.076	(3.8%)	0	0	9.0%	6.9%
= Al-Argan International Real Estate Co.	ARGK.KW	NM	0.27	5.80%	0.42	0.083	0.000	22.0	0.135	0.060	(20.9%)	0	0	0.4%	NM
▼ Abyaar Real Estate Development Co.	ABYR.KW	NM	0.21	0.00%	1.21	0.007	(0.000)	8.1	0.014	0.005	(6.4%)	5,556,521	40,260	60.2%	NM
= Munshaat Real Estate Projects Co.	MUNS.KW	NM	0.50	0.00%	0.66	0.065	0.000	20.8	0.085	0.045	(12.7%)	863	56	6.3%	NM
▲ First Dubai For Real Estate Development	FIRST.KW	NM	0.55	0.00%	1.44	0.041	0.001	41.3	0.055	0.027	16.0%	3,712,852	151,974	29.1%	0.6%
▼ Kuwait Business Town Real Estate Co.	KBTK.KW	10.3	0.23	0.00%	1.05	0.026	(0.000)	16.0	0.046	0.022	(42.0%)	1,757,586	44,729	36.4%	2.2%
= Real Estate Asset Management Co.	REAM.KW	NM	1.48	0.00%	0.08	0.204	0.000	22.4	0.204	0.060	132.1%	0	0	0.1%	NM
▼ MENA Real Estate Co. *	MENK.KW	NM	0.19	0.00%	0.98	0.027	(0.001)	3.7	0.043	0.021	(34.1%)	728,000	19,907	92.4%	NM
= Al Mudon International Real Estate Co.	ALMK.KW	NM	0.12	0.00%	0.86	0.016	0.000	1.6	0.029	0.015	(35.1%)	0	0	23.7%	NM
= Real Estate Trade Centers Co.	MARA.KW	16.9	0.17	0.00%	0.33	0.029	0.000	4.1	0.050	0.018	26.3%	0	0	28.3%	1.0%
▲ Kuwait Remal Real Estate Co.	REMAK.KW	NM	0.34	0.00%	0.86	0.022	0.002	6.7	0.027	0.013	(9.8%)	2,197,171	48,554	19.2%	NM
▲ Mashaer Holding Co.	MASHAER.KW	NM	0.54	8.13%	0.53	0.062	0.001	11.0	0.086	0.048	(20.7%)	32,057	1,955	32.0%	NM
= Effect Real Estate Co.	EFFECT.KW	NM	0.29	0.00%	0.44	0.021	0.000	1.7	N/A	N/A	0.0%	0	0	0.0%	NM
= Ajwan Gulf Real Estate Co.	AJWN.KW	NM	0.19	0.00%	0.60	0.011	0.000	2.2	0.016	0.009	(28.7%)	0	0	116.7%	NM
▲ Al Masaken Intl. Real Estate Dev. Co.	MASKN.KW	NM	0.35	0.00%	0.14	0.030	0.004	3.0	0.074	0.026	(31.8%)	301,000	8,969	1.0%	0.4%
= Dalqan Real Estate Co.	DALQ.KW	62.7	2.37	0.00%	NA	0.350	0.000	15.8	0.385	0.333	0.0%	0	0	0.0%	3.8%
▼ Dar Al Thuraya Real Estate Co.	THURY.KW	NM	0.87	0.00%	0.01	0.092	(0.022)	13.5	0.190	0.040	31.4%	74,173	6,523	2.2%	0.2%
▼ Osos Holding Group Co.	OSOS.KW	NM	0.84	7.25%	0.25	0.092	(0.000)	9.6	0.118	0.084	(8.1%)	73,926	6,358	7.1%	NM
▼ KFH Capital REIT	BAITAKREIT.KW	NA	NA	0.00%	NA	1.030	(0.005)	24.3	1.131	0.978	NA	48,904	50,361	4.4%	NA
Real Estate		NM	0.73	2.45%				1,988.0			(12.0%)	146,097,681	4,330,836		NM

Boursa Kuwait Daily Bulletin

Wednesday, September 16, 2020

Company	Reuters Ticker	Valuation Multiples				Price (KWD)		MKT Cap (KWD Mn.)	52 Weeks High (KWD)	52 Weeks Low (KWD)	YTD-20 Return #	Daily Trading Data		YTD-20 Capital Turnover	ROE
		Trailing P/E (X)	Trailing P/BV (X)	Dividend Yield	Beta	Closing	DTD Change					Volume (Shrs.)	Value (KWD)		
▲ Kuwait Investment Co.	KINV.KW	NM	0.70	12.43%	0.71	0.120	0.001	66.2	0.172	0.095	(20.0%)	525,037	62,642	24.4%	NM
▼ Commercial Facilities Co.	FACI.KW	NM	0.69	9.31%	0.52	0.183	(0.002)	98.2	0.235	0.179	(15.7%)	929	170	4.4%	NM
= Int'l Financial Advisors Co.	IFIN.KW	NM	0.99	0.00%	1.32	0.031	0.000	8.2	0.060	0.027	(42.3%)	0	0	32.0%	NM
▲ National Investment Co.	NINV.KW	NM	0.74	6.12%	1.24	0.134	0.001	117.4	0.158	0.080	(2.9%)	4,285,397	581,137	37.0%	NM
▲ Kuwait Projects Co.(Holding)	KPRO.KW	5.2	1.41	6.43%	0.57	0.153	0.001	306.0	0.230	0.147	(29.2%)	4,009,589	612,176	10.1%	27.3%
▲ Coast Invest. & Development Co.	COAS.KW	NM	0.44	0.00%	1.33	0.036	0.001	22.4	0.045	0.026	(10.5%)	431,810	15,151	18.7%	NM
▲ The Securities House Co.	SECH.KW	NM	0.51	0.00%	1.14	0.045	0.001	24.7	0.063	0.027	(2.2%)	2,336,079	103,255	60.8%	NM
▲ Arzan Financial Group For Fin. & Invest.	ARZA.KW	NM	0.50	0.00%	1.03	0.055	0.001	44.1	0.064	0.022	131.6%	10,213,422	556,378	205.8%	NM
▲ Kuwait Financial Centre	MARKZ.KW	NM	0.47	6.10%	0.77	0.082	0.001	39.4	0.121	0.070	(22.6%)	614,384	50,008	25.3%	NM
▲ Kuwait & M.E. Financial Inv. Co.	KMEF.KW	4.2	1.34	0.00%	0.61	0.118	0.003	31.1	0.138	0.063	31.8%	264,027	31,332	20.1%	32.2%
= First Investment Co.	OLAK.KW	NM	0.44	0.00%	1.01	0.030	0.000	19.5	0.045	0.022	(12.8%)	3,032,800	90,833	175.4%	NM
▼ Al-Mal Investment Co.	MALK.KW	NM	0.39	0.00%	1.20	0.009	(0.000)	2.8	0.016	0.008	(8.1%)	2,007,475	18,402	91.2%	NM
▼ Gulf Investment House	GIHK.KW	NM	1.76	0.00%	1.00	0.097	(0.001)	62.9	0.100	0.038	50.6%	350,244	33,805	20.5%	NM
▼ A'ayan Leasing & Investment Co.	AAYA.KW	NM	1.06	0.00%	1.23	0.084	(0.003)	68.4	0.102	0.032	79.9%	69,664,500	5,833,181	159.2%	NM
▼ Bayan Investment Co.	BAYK.KW	NM	0.51	0.00%	0.85	0.044	(0.001)	17.3	0.053	0.031	15.7%	18,250	749	5.8%	NM
= Osoul Investment Co.	OSUL.KW	NM	0.77	13.32%	0.44	0.082	0.000	12.9	0.121	0.070	9.3%	140,407	11,377	25.9%	NM
▲ Kuwait Finance & Investment Co.	KFSK.KW	NM	0.39	0.00%	0.30	0.045	0.002	14.5	0.058	0.038	(9.1%)	100	5	9.4%	NM
▲ Kamco Investment Co.	KAMC.KW	NM	0.51	6.94%	0.38	0.072	0.001	24.6	0.111	0.060	(20.0%)	1,540,172	110,254	14.3%	NM
= National International Holding Co.	NIHK.KW	7.7	0.37	6.98%	0.67	0.063	0.000	14.3	0.081	0.049	(14.1%)	550	34	4.1%	4.8%
▲ UniCap Investment and Finance	UNICAP.KW	NM	0.59	0.00%	0.65	0.045	0.003	10.8	0.057	0.035	(18.2%)	866,880	39,097	10.6%	NM
▼ Al Madar Finance & Investment Co.	MADR.KW	17.5	0.85	5.62%	0.34	0.086	(0.006)	18.4	0.148	0.062	(7.2%)	1,838,095	159,924	25.7%	4.9%
= Al-Deera Holding	DEER.KW	NM	1.92	0.00%	0.83	0.016	0.000	3.2	0.022	0.011	(20.0%)	0	0	6.1%	NM
▼ Al Salam Group Holding Co.	SAGH.KW	30.3	0.23	0.00%	1.27	0.026	(0.001)	7.1	0.033	0.018	(9.9%)	6,305,862	168,529	239.4%	0.8%
▼ Ektitab Holding Co.	EKTT.KW	NM	0.37	0.00%	1.00	0.015	(0.001)	4.8	0.017	0.010	0.7%	547,746	8,286	46.7%	NM
▼ Al Madina For Finance & Investment Co.	MADI.KW	NM	0.45	0.00%	1.22	0.013	(0.001)	5.3	0.019	0.009	(13.3%)	7,294,470	95,185	160.9%	NM
▼ NOOR Financial Investment Co.	NOOR.KW	8.0	1.24	3.44%	1.24	0.174	(0.001)	71.9	0.184	0.076	46.2%	36,222	6,273	53.2%	15.4%
= Tamdeen Investment Co.	TAMI.KW	NM	0.57	3.72%	0.33	0.321	0.000	110.8	0.400	0.199	(7.0%)	0	0	0.3%	NM
= Kuwait Syrian Holding Co.	KSHC.KW	NM	0.23	0.00%	0.73	0.025	0.000	4.5	0.043	0.022	(19.7%)	0	0	25.2%	NM
▼ Asiya Capital Investment Co.	ASIYA.KW	NM	0.37	0.00%	0.52	0.032	(0.002)	25.9	0.041	0.029	(20.8%)	58,233	1,863	1.6%	NM
▼ Gulf North Africa Holding Co.	GNAH.KW	NM	0.75	0.00%	1.09	0.056	0.000	8.4	0.062	0.052	(9.4%)	0	0	4.0%	NM
▼ Amwal International Investment Co.	AMWA.KW	NM	0.56	0.00%	0.38	0.030	(0.005)	5.3	0.053	0.030	(1.7%)	80,000	2,485	0.1%	NM
▼ Alimtiq Investment Group	ALIMK.KW	NM	0.53	8.30%	0.95	0.092	(0.000)	104.7	0.137	0.071	(26.7%)	2,263,637	209,752	38.6%	NM
= Tamkeen Holding Co.	TAMKE.KW	NM	0.05	0.00%	NA	0.005	0.000	0.3	N/A	N/A	0.0%	0	0	0.0%	NM
▲ Manazel Holding Co.	MANK.KW	9.8	0.73	0.00%	1.38	0.034	0.000	14.5	0.048	0.021	(14.0%)	1,518,960	50,972	44.1%	7.5%
▲ National Industries Group	NIND.KW	NM	0.78	5.78%	1.42	0.173	0.004	247.0	0.247	0.121	(28.2%)	6,798,237	1,169,098	39.3%	NM
▼ Warba Capital Holding Co.	WARBACAP.KW	NM	0.54	0.00%	0.70	0.046	(0.002)	4.6	0.070	0.045	(29.5%)	51,120	2,298	8.8%	NM
= Arabi Holding Group Co.	AGHC.KW	NM	1.23	0.00%	0.15	0.198	0.000	34.2	0.337	0.079	(27.7%)	0	0	3.1%	NM
▲ Privatization Holding Co.	KPPC.KW	NM	0.33	0.00%	0.79	0.042	0.001	25.6	0.059	0.037	(15.2%)	209,291	8,869	5.8%	NM
▲ Credit Rating & Collection Co.	TAHS.KW	NM	0.99	0.00%	NA	0.031	0.001	5.1	0.035	0.019	54.5%	101	3	0.2%	NM
= Egypt Kuwait Holding Co.	ECHK.KW	12.1	2.53	0.00%	0.16	0.370	0.000	379.0	0.500	0.318	(17.8%)	0	0	0.0%	20.9%
▼ GFH Financial Group	GFH.KW	18.9	1.01	7.74%	0.87	0.052	(0.000)	265.0	0.074	0.042	(24.7%)	154,227	8,023	1.6%	5.3%
▲ Inovent	INOV.KW	9.0	0.49	6.81%	0.71	0.070	0.003	21.0	0.072	0.044	9.5%	439,930	30,672	5.9%	5.4%
= Al Bareeq Holding	BAREEQ.KW	33.8	1.44	0.00%	0.03	0.088	0.000	66.0	0.110	0.088	(12.5%)	0	0	1.7%	4.3%
= Amar For Finance and Leasing Co.	AMARF.KW	NM	0.63	0.00%	0.07	0.053	0.000	10.6	0.064	0.037	39.5%	0	0	11.0%	NM
▼ Al-Manar Financing & Leasing Co.	ALMANAR.KW	NM	0.43	0.00%	0.51	0.044	(0.002)	13.7	0.060	0.037	(14.5%)	15,000	665	6.8%	NM
▼ Boursa Kuwait Securities Co	BOURSA.KW	17.8	6.20	0.00%	NA	1.010	(0.020)	202.8	1.210	0.996	NA	2,716,219	2,735,723	6.6%	34.8%
Financial Services		NM	0.90	3.89%				2,665.8			(3.7%)	130,629,402	12,808,608		NM

Boursa Kuwait Daily Bulletin

Wednesday, September 16, 2020

Company	Reuters Ticker	Valuation Multiples				Price (KWD)		MKT Cap (KWD Mn.)	52 Weeks High (KWD)	52 Weeks Low (KWD)	YTD-20 Return #	Daily Trading Data		YTD-20 Capital Turnover	ROE
		Trailing P/E (X)	Trailing P/BV (X)	Dividend Yield	Beta	Closing	DTD Change					Volume (Shrs.)	Value (KWD)		
▼ Automated Systems Co.	ASCK.KW	NM	0.54	6.08%	0.12	0.066	(0.006)	6.6	0.086	0.051	(7.1%)	41,600	2,741	1.9%	NM
Technology		NM	0.54	6.08%				6.6			(7.1%)	41,600	2,741		NM
▼ Shamal Az-Zour Al-Oula Power and Water Co.	AZNOULA.KW	29.8	4.78	0.00%	NA	0.333	(0.004)	366.3	0.500	0.297	N/A	8,041,377	2,697,333	28.9%	16.1%
Utilities		29.8	4.78	0.00%				366.3			N/A	8,041,377	2,697,333		16.1%
Boursa Kuwait		27.3	1.40	3.91%				32,182.1			(11.45%)	450,551,804	56,424,809		5.1%

Year-to-Date 2020 Top Movers & Most Active Stocks

YTD Top % Gainers	Close (KWD)	Percent Change
Real Estate Asset Management Co.	0.204	132.1%
Arzan Financial Group For Fin. & Invest.	0.055	131.6%
A'ayan Leasing & Investment Co.	0.084	79.9%
Investors Holding Group Co.	0.013	62.5%
Credit Rating & Collection Co.	0.031	54.5%
YTD Most Active by Volume	Close (KWD)	Volume (Shrs.)
Ahli United Bank - Bahrain	0.232	3,518,157,930
Kuwait Finance House	0.634	1,758,151,709
Investors Holding Group Co.	0.013	1,734,694,121
Arzan Financial Group For Fin. & Invest.	0.055	1,652,612,113
Gulf Petroleum Investment	0.019	1,643,730,025

YTD Top % Losers	Close (KWD)	Percent Change
IFA Hotels & Resorts Co.	0.024	(55.8%)
Jazeera Airways Co.	0.579	(47.3%)
Int'l Financial Advisors Co.	0.031	(42.3%)
Kuwait Business Town Real Estate Co.	0.026	(42.0%)
ALAFCO Aviation Lease & Finance Co.	0.163	(40.1%)
YTD Most Active by Value	Close (KWD)	Value (KWD)
Kuwait Finance House	0.634	1,147,774,962
National Bank of Kuwait	0.866	892,464,503
Ahli United Bank - Bahrain	0.232	763,073,902
Zain	0.576	397,462,675
Agility (PWC Logistics)	0.629	318,272,185

* Different Fiscal Year Company

Disclaimer & Important Disclosures

Kamco Invest is authorized and fully regulated by the Capital Markets Authority ("CMA, Kuwait") and partially regulated by the Central Bank of Kuwait ("CBK").

This document is provided for informational purposes only. Nothing contained in this document constitutes investment, an offer to invest, legal, tax or other advice or guidance and should be disregarded when considering or making investment decisions. In preparing this document, Kamco Invest did not take into account the investment objectives, financial situation and particular needs of any particular person. Accordingly, before acting on this document, investors should independently evaluate the investments and strategies referred to herein and make their own determination of whether it is appropriate in light of their own financial circumstances and objectives. The entire content of this document is subject to copyright with all rights reserved. This research and the information contained herein may not be reproduced, distributed or transmitted in Kuwait or in any other jurisdiction to any other person or incorporated in any way into another document or other material without our prior written consent.

Analyst Certification

Each of the analysts identified in this report, if any and where applicable, certifies, with respect to the sector, companies or securities that the individual analyses, that (1) the views expressed in this report reflect his or her personal views about all of the subject companies and securities and (2) no part of his or her compensation was, is or will be directly or indirectly dependent on the specific recommendations or views expressed in this report.

Kamco Invest Ratings

Kamco Invest research is based on the analysis of regional and country economics, industries and company fundamentals. Kamco Invest company research reflects a long-term (12-month) target price for a company or stock. The ratings bands are:

* **Outperform:** Target Price represents expected returns >= 10% in the next 12 months

* **Neutral:** Target Price represents expected returns between -10% and +10% in the next 12 months

* **Underperform:** Target Price represents an expected return of <-10% in the next 12 months

In certain circumstances, ratings may differ from those implied by a fair value target using the criteria above. Kamco Invest policy is to maintain up-to-date fair value targets on the companies under its coverage, reflecting any material changes to the analyst's outlook on a company. Share price volatility may cause a stock to move outside the rating range implied by Kamco Invest's fair value target. Analysts may not necessarily change their ratings if this happens, but are expected to disclose the rationale behind their view to Kamco Invest clients.

Any terms and conditions proposed by you which are in addition to or which conflict with this Disclaimer are expressly rejected by Kamco Invest and shall be of no force or effect. The information contained in this document is based on current trade, statistical and other public information we consider reliable. We do not represent or warrant that such information is fair, accurate or complete and it should not be relied upon as such. Kamco Invest has no obligation to update, modify or amend this document or to otherwise notify a recipient thereof in the event that any opinion, forecast or estimate set forth herein, changes or subsequently becomes inaccurate. The publication is provided for informational uses only and is not intended for trading purposes. The information on publications does not give rise to any legally binding obligation and/or agreement, including without limitation any obligation to update such information. You shall be responsible for conducting your own investigation and analysis of the information contained or referred to in this document and of evaluating the merits and risks involved in the securities forming the subject matter of this or other such document. Moreover, the provision of certain data/information in the publication may be subject to the terms and conditions of other agreements to which Kamco Invest is a party.

Nothing in this document should be construed as a solicitation or offer, or recommendation, to acquire or dispose of any investment or to engage in any other transaction, or to provide any investment advice or service. This document is directed at Professional Clients and not Retail Clients within the meaning of CMA rules. Any other persons in receipt of this document must not rely upon or otherwise act upon it. Entities and individuals

Kamco Investment Company (DIFC) Limited ("Kamco Invest DIFC"), Office 205, Level 2, Gate Village 1, Dubai International Financial Centre, a wholly owned subsidiary of Kamco Investment Company KSC (Public), is regulated by the Dubai Financial Services Authority (DFSA). Kamco Invest DIFC may only undertake the financial services activities that fall within the scope of its existing DFSA licence. The information in this document may be distributed by Kamco Invest DIFC on behalf of Kamco Investment Company KSC (Public). This document is intended for Professional Clients or Market Counterparties only as defined by the DFSA, and no other person should act upon it.

This document may not be distributed in Saudi Arabia except to such persons as are permitted under the Offers of Securities Regulations issued by the Capital Market Authority. The Capital Market Authority does not make any representation as to the accuracy or completeness of this document, and expressly disclaims any liability whatsoever for any loss arising from, or incurred in reliance upon, any part of this document. The recipients of this document hereby should conduct their own due diligence on the accuracy of the information relating to the contents of this document. If you do not understand the contents of this document you should consult an authorized financial advisor.

Risk Warnings

Any prices, valuations or forecasts are indicative and are not intended to predict actual results, which may differ substantially from those reflected. The value of an investment may go up as well as down. The value of and income from any investment may fluctuate from day to day as a result of changes in relevant economic markets (including, without limitation, foreseeable or unforeseeable changes in interest rates, foreign exchange rates, default rates, prepayment rates, political or financial conditions, etc.).

Past performance is not indicative of future results. Any opinions, estimates, valuations or projections (target prices and ratings in particular) are inherently imprecise and a matter of judgment. They are statements of opinion and not of fact, based on current expectations, estimates and projections, and rely on beliefs and assumptions. Actual outcomes and returns may differ materially from what is expressed or forecasted. There are no guarantees of future performance. Certain transactions, including those involving futures, options, and other derivatives, give rise to substantial risk and are not suitable for all investors. This document does not propose to identify or to suggest all of the risks (direct or indirect) which may be associated with the investments and strategies referred to herein.

Conflict of Interest

Kamco Invest and its affiliates provide full investment banking services, and they and their directors, officers and employees, may take positions which conflict with the views expressed in this document. Salespeople, traders, and other professionals of Kamco Invest may provide oral or written market commentary or trading strategies to our clients and our proprietary trading desks that reflect opinions that are contrary to the opinions expressed in this document. Our asset management area, our proprietary trading desks and investing businesses may make investment decisions that are inconsistent with the recommendations or views expressed in this document. Kamco Invest may have or seek transactions, including those involving futures, options, and other derivatives, give rise to substantial risk and are not suitable for all investors. This document does not propose to identify or to suggest all of the risks (direct or indirect) which may be associated with the investments and strategies referred to herein.

No Liability & Warranty

Kamco Invest makes neither implied nor expressed representations or warranties and, to the fullest extent permitted by applicable law, we hereby expressly disclaim any and all express, implied and statutory representations and warranties of any kind, including, without limitation, any warranty as to accuracy, timeliness, completeness, and fitness for a particular purpose and/or non-infringement. Kamco Invest will accept no liability in any event including (without limitation) your reliance on the information contained in this document, any negligence for any damages or loss of any kind, including (without limitation) direct, indirect, incidental, special or consequential damages, expenses or losses arising out of, or in connection with your use or inability to use this document, or in connection with any error, omission, defect, computer virus or system failure, or