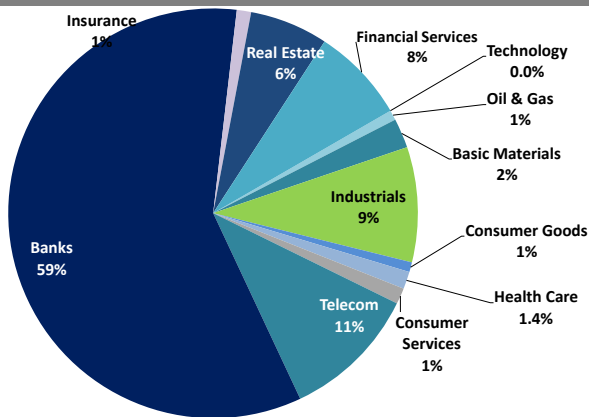


# Boursa Kuwait Daily Report

August 16, 2020

## Sector Weight by Market Cap



## Top 10 Companies by Market Capitalization

Company Name	Market Cap. (Mn KWD)	P/E (X)	ROE* (%)
1- National Bank of Kuwait	5,658.3	14.1	11.7%
2- Kuwait Finance House	4,742.6	18.9	12.2%
3- Zain	2,540.0	11.7	16.7%
4- Ahli United Bank - Bahrain	2,083.8	9.4	17.1%
5- Boubyan Bank	1,812.7	28.9	10.9%
6- Agility (PWC Logistics)	1,297.5	15.0	7.9%
7- Commercial Bank of Kuwait	1,023.9	NM	0.0%
8- Mabane Co.	742.6	13.2	11.9%
9- Gulf Bank	624.9	9.8	9.6%
10- Ahli United Bank - Kuwait	571.8	10.4	12.1%
<b>Total</b>	<b>21,098</b>	<b>14.91</b>	<b>11.7%</b>

\*: ROE is calculated based on FY2019 net profit & shareholders' equity as of 31-December-19

## Top Movers and Most Active Stocks

Today's Top % Gainers	Close (KWD)	Change (KWD)	Percent Change
Abyaar Real Estate Development Co.	0.007	0.001	13.8%
Egypt Kuwait Holding Co.	0.374	0.034	10.0%
Hayat Communications Co.	0.055	0.005	9.8%
NOOR Financial Investment Co.	0.146	0.012	9.0%
Arzan Financial Group For Fin. & Invest.	0.042	0.003	8.9%

Today's Top % Losers	Close (KWD)	Change (KWD)	Percent Change
Wethaq Takaful Insurance Co.	0.023	(0.002)	(8.7%)
Ajwan Gulf Real Estate Co.	0.011	(0.001)	(5.4%)
Gulf Petroleum Investment	0.017	(0.001)	(5.0%)
Al Eid Food Co.	0.084	(0.004)	(5.0%)
Kuwait Hotels Co.	0.085	(0.004)	(4.9%)

Today's Most Active by Volume	Close (KWD)	Percent Change	Volume (Shares)
Shamal Az-Zour Al-Oula Power and Water (	0.380	0.0%	52,947,447
Ahli United Bank - Bahrain	0.214	5.9%	35,170,525
Abyaar Real Estate Development Co.	0.007	13.8%	11,817,795
AAN Digital Services Co.	0.010	2.0%	10,307,501
Arzan Financial Group For Fin. & Invest.	0.042	8.9%	10,113,824

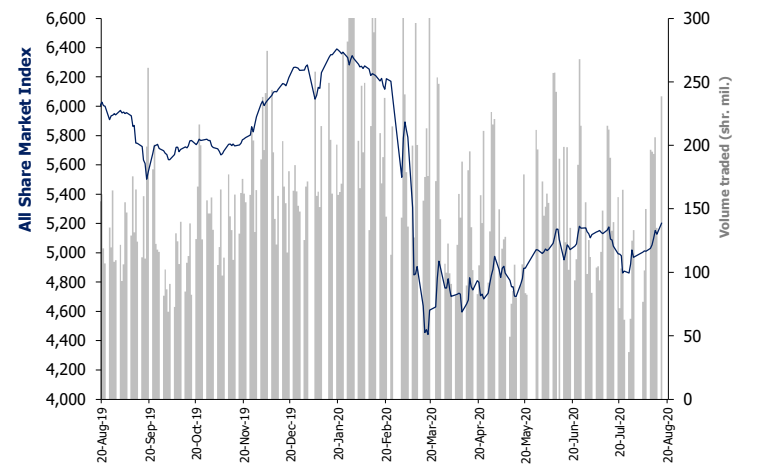
Source: Boursa Kuwait, Kamco Invest Research

## Market Capitalization - Sector Returns

	Market Cap. (KWD Mn)	DTD % Chg	MTD % Chg	YTD % Chg
Boursa Kuwait	30,803.6	▲ 2.9%	6.1%	(15.2%)
Oil & Gas	239.8	▲ 1.8%	0.1%	(7.0%)
Basic Materials	705.9	▲ 0.9%	4.0%	(12.6%)
Industrials	2,757.3	▲ 0.0%	(0.6%)	(16.2%)
Consumer Goods	237.8	▼ (0.2%)	5.7%	20.5%
Health Care	416.1	= 0.0%	0.0%	(5.1%)
Consumer Services	379.3	▲ 0.0%	(2.2%)	(31.3%)
Telecommunications	3,270.5	▲ 2.0%	5.6%	(4.3%)
Banks	17,874.4	▲ 1.6%	6.3%	(18.7%)
Insurance	348.8	▲ 0.9%	2.4%	0.4%
Real Estate	1,877.3	▲ 1.8%	4.2%	(16.9%)
Financial Services	2,272.3	▲ 2.7%	1.1%	(17.9%)
Technology	6.1	= 0.0%	(3.9%)	(13.1%)
Utilities	418.0	= 0.0%	N/A	N/A

Market Breadth	▲ 68	▼ 35	■ 71		
Benchmark Return	Closing	DTD	DTD	MTD	YTD
	Value	Chg	% Chg	% Chg	% Chg
Premier Market Index	5,742.03	89.1	1.6%	6.0%	(17.7%)
Main 50 Index	4,139.60	51.8	1.3%	2.3%	(17.0%)
Main Market Index	4,135.34	51.5	1.3%	1.2%	(15.8%)
All Share Market Index	5,202.64	76.6	1.5%	4.7%	(17.2%)
Market Cap (KWD Mn)	30,803.55	862.9	2.9%	6.1%	(15.2%)

## Index Performance relative to Volume



## Market Trading Data and Volatility

Trading Indicators	Today's Value	DTD Chg	DTD % Chg	Average Daily YTD 2020	YTD 2019
Volume (Shrs Mn)	238.7	103.8	76.9%	169.3	88.6
Value Traded (KWD Mn)	59.9	36.1	151.5%	34.2	16.9
No. of Trades	12,546	6,074	93.85%	8,051	3,810

Today's Most Active by Value	Close (KWD)	Percent Change	Value (KWD)
Shamal Az-Zour Al-Oula Power and Water Co	0.380	0.0%	21,878,410
Ahli United Bank - Bahrain	0.214	5.9%	7,430,037
Kuwait Finance House	0.618	0.7%	6,224,762
Zain	0.587	2.3%	4,408,031
National Bank of Kuwait	0.826	1.5%	3,190,962

# Boursa Kuwait - Premier Market

Sunday, August 16, 2020

	Premier Market Stocks	Closing Price			Market Capitalization			Valuation Multiples				ROE	YTD-20 Price Return	YTD-20 Trading Indicators	
		KWD	DTD Chg. (KWD)	D-T-D Return	KWD Mn	Weight in Premier Index	Weight in Boursa Kuwait	P/E (X)	P/BV (X)	Yield	Beta			Volume (Mn Shrs)	Value (KWD Mn)
▲	National Bank of Kuwait	0.826	0.012	1.5%	5,658	25.0%	18.4%	14.1	1.65	4.0%	1.28	11.7%	(18.9%)	957.68	807.10
▲	Gulf Bank	0.205	0.004	2.0%	625	2.8%	2.0%	9.8	0.94	5.1%	1.13	9.6%	(32.3%)	972.20	220.06
=	Kuwait International Bank	0.170	0.000	0.0%	193	0.8%	0.6%	11.2	0.69	3.5%	1.00	6.1%	(34.9%)	948.78	184.20
▲	Burgan Bank	0.191	0.003	1.6%	501	2.2%	1.6%	5.9	0.67	6.3%	1.05	11.3%	(37.2%)	347.56	77.26
▲	Kuwait Finance House	0.618	0.004	0.7%	4,743	20.9%	15.4%	18.9	2.30	2.9%	1.42	12.2%	(16.2%)	1,591.67	1,043.76
▼	Boubyan Bank	0.556	(0.001)	(0.2%)	1,813	8.0%	5.9%	28.9	3.15	1.4%	1.05	10.9%	(1.9%)	155.35	82.43
▲	Kuwait Projects Co. (Holding)	0.150	0.002	1.4%	300	1.3%	1.0%	10.0	0.89	6.6%	0.57	8.9%	(30.6%)	141.55	24.23
▲	Mabane Co.	0.672	0.023	3.5%	743	3.3%	2.4%	13.2	1.57	2.0%	1.09	11.9%	(21.3%)	181.28	118.53
=	National Industries Group (Holding)	0.159	0.000	0.0%	227	1.0%	0.7%	4.9	0.63	6.3%	1.43	12.9%	(34.0%)	481.74	89.02
=	Boubyan Petrochemical Co.	0.547	0.000	0.0%	293	1.3%	0.9%	24.7	1.31	6.2%	0.73	5.3%	(18.1%)	64.92	36.80
▲	Qurain Petrochemicals Industries Co.	0.290	0.005	1.8%	319	1.4%	1.0%	11.3	0.76	5.2%	0.76	6.7%	(6.5%)	119.57	31.05
▼	Agility Public Warehousing Co.	0.640	(0.001)	(0.2%)	1,298	5.7%	4.2%	15.0	1.18	0.6%	1.48	7.9%	(10.0%)	439.35	288.17
▲	Mobile Telecommunications Co.	0.587	0.013	2.3%	2,540	11.2%	8.2%	11.7	1.96	5.6%	1.40	16.7%	(2.2%)	666.95	352.93
▲	Human Soft Holding Co.	2.584	0.021	0.8%	316	1.4%	1.0%	8.8	3.93	7.1%	0.47	44.6%	(14.2%)	36.59	101.52
▲	Ahli United Bank (B.S.C)	0.214	0.012	5.9%	2,084	9.2%	6.8%	9.4	1.61	8.4%	1.11	17.1%	(26.5%)	3,112.14	671.49
▲	Warba Bank	0.204	0.002	1.0%	321	1.4%	1.0%	19.4	1.47	0.0%	0.99	7.6%	(22.1%)	410.96	87.82
▲	Mezzan Holding Co.	0.618	0.003	0.5%	192	0.8%	0.6%	34.1	1.82	2.4%	0.46	5.3%	23.6%	51.50	27.98
▼	Integrated Holding Co.	0.373	(0.003)	(0.8%)	82	0.4%	0.3%	10.4	1.20	8.0%	0.46	11.5%	(32.3%)	43.83	21.03
=	Shamal Az-Zour Al-Oula Power and Water	0.380	0.000	0.0%	418	1.8%	1.4%	34.0	5.46	0.0%	NA	16.1%	N/A	52.95	21.88
Subtotal- Premier Market Stocks		5,742.03	89.12	1.58%	22,664	100%	74%	13.7	1.64	3.98%		12.0%	-17.2%	10,776.56	4,287.27
Remaining of the Market					8,139		26%	20.3	0.74	4.36%		3.6%		14,114.40	740.45

Source: Kamco Research

# Boursa Kuwait Daily Bulletin

Sunday, August 16, 2020

Company	Reuters Ticker	Valuation Multiples				Price (KWD)		MKT Cap (KWD Mn.)	52 Weeks High (KWD)	52 Weeks Low (KWD)	YTD-20 Return #	Daily Trading Data		YTD-20 Capital Turnover	ROE
		Trailing P/E (X)	Trailing P/BV (X)	Dividend Yield	Beta	Closing	DTD Change					Volume (Shrs.)	Value (KWD)		
▼ Senergy Holding Co.	SENE.KW	NM	0.34	0.00%	1.14	0.017	(0.000)	3.3	0.027	0.014	(23.7%)	213,001	3,434	21.3%	NM
▲ Independent Petroleum Group	IPGK.KW	14.2	0.96	5.75%	0.28	0.420	0.020	94.3	0.497	0.375	(12.9%)	2,121	875	0.3%	6.8%
= National Petroleum Services Co.	NAPS.KW	9.2	2.56	6.50%	0.23	1.045	0.000	104.5	1.389	0.903	(10.7%)	0	0	0.2%	27.9%
= The Energy House Co.	ENER.KW	NM	0.64	0.00%	0.94	0.021	0.000	15.6	0.036	0.014	(8.8%)	0	0	5.5%	NM
▼ Gulf Petroleum Investment	GPIK.KW	NM	0.12	0.00%	1.06	0.017	(0.001)	5.0	0.025	0.012	(15.4%)	4,892,191	84,292	362.1%	NM
= Burgan Co. for Drilling, Tdg. & Maint. *	ABAR.KW	11.1	0.26	0.00%	NA	0.070	0.000	17.0	0.098	0.062	(12.7%)	0	0	0.1%	2.4%
<b>Oil &amp; Gas</b>		<b>29.9</b>	<b>0.86</b>	<b>5.09%</b>				<b>239.8</b>			<b>(7.0%)</b>	<b>5,107,313</b>	<b>88,601</b>		<b>2.9%</b>
▲ Kuwait Foundry Co.	KFDC.KW	19.0	0.79	6.38%	0.67	0.235	0.008	17.0	0.564	0.192	(29.9%)	5	1	1.7%	4.1%
= Boubyan Petrochemicals Co.*	BPCC.KW	24.7	1.31	6.22%	0.73	0.547	0.000	292.5	0.818	0.395	(18.1%)	209,067	114,157	12.1%	5.3%
= Al Kout for Industrial Projects Co.	ALKK.KW	16.2	2.50	6.50%	0.02	0.769	0.000	77.6	0.850	0.769	(9.5%)	0	0	0.0%	15.4%
▲ Qurain Petrochemical Industries Co. *	ALQK.KW	11.3	0.76	5.22%	0.76	0.290	0.005	318.8	0.347	0.163	(6.5%)	1,184,870	346,271	10.9%	6.7%
<b>Basic Materials</b>		<b>15.4</b>	<b>1.01</b>	<b>5.81%</b>				<b>705.9</b>			<b>(12.6%)</b>	<b>1,393,942</b>	<b>460,429</b>		<b>6.6%</b>
▼ Specialities Group Holding Co.	SPEC.KW	7.4	0.34	0.00%	0.39	0.066	(0.001)	9.8	0.086	0.055	(22.2%)	13,320	873	24.4%	4.5%
▼ Kuwait Cement Co.	KCEM.KW	29.8	0.57	2.98%	0.46	0.163	(0.003)	119.5	0.284	0.144	(33.7%)	711,469	114,201	6.3%	1.9%
▲ Gulf Cable & Electrical Ind. Co.	CABL.KW	29.3	0.71	6.77%	0.91	0.591	0.010	124.1	0.611	0.390	21.1%	934,448	551,549	35.2%	2.4%
= Heavy Eng'g Ind. & Shipbuilding Co.	SHIP.KW	5.6	1.01	8.57%	0.60	0.350	0.000	63.1	0.419	0.298	(13.6%)	233,190	81,637	20.6%	18.0%
▼ Kuwait Portland Cement Co.	PCEM.KW	9.6	0.97	5.52%	0.46	0.725	(0.008)	72.7	1.215	0.683	(26.2%)	3,764	2,735	5.1%	10.2%
= Shuaiba Industrial Co.	PAPE.KW	39.1	0.71	3.97%	0.12	0.124	0.000	12.5	0.180	0.122	(20.0%)	0	0	0.5%	1.8%
= Metal & Recycling Co.	MRCK.KW	NM	0.50	0.00%	0.22	0.046	0.000	5.3	0.070	0.020	(9.0%)	0	0	1.6%	NM
▲ ACICO Industries Co.	ACIC.KW	11.5	0.28	5.44%	0.37	0.096	0.001	29.1	0.145	0.081	(27.5%)	23,845	2,228	5.3%	2.5%
= Hilal Cement Co.	HCCCK.KW	NM	0.60	21.93%	0.08	0.068	0.000	6.9	0.100	0.063	(31.6%)	0	0	0.2%	NM
▼ National Industries Co.	NIBM.KW	13.2	0.67	6.35%	0.16	0.152	(0.007)	56.6	0.180	0.143	(7.9%)	697	106	0.2%	5.1%
= Equipment Holding Co.	EQUI.KW	NM	0.27	0.00%	1.03	0.014	0.000	1.8	0.024	0.013	(38.4%)	0	0	10.8%	NM
= National Co. for Consumer Industries	NCCI.KW	NM	0.61	0.00%	NA	0.055	0.000	4.9	0.100	0.010	(0.2%)	0	0	0.4%	0.2%
▲ Salbookh Trading Co.	SALB.KW	NM	0.42	0.00%	0.60	0.030	0.001	3.1	0.051	0.026	(40.5%)	200	6	21.3%	NM
▼ Agility (PWC Logistics)	AGLT.KW	15.0	1.18	0.65%	1.48	0.640	(0.001)	1,297.5	0.748	0.357	(10.0%)	4,173,106	2,661,737	21.7%	7.9%
= Educational Holding Group*	EDUK.KW	8.6	1.68	20.50%	0.46	0.290	0.000	71.1	0.475	0.228	(33.9%)	0	0	0.9%	19.5%
= National Cleaning Co.	CLEA.KW	7.3	0.36	9.33%	0.85	0.052	0.000	13.0	0.088	0.047	(24.6%)	0	0	21.0%	4.9%
▲ Kuwait & Gulf Link Transport Co.	KGLK.KW	NM	0.21	0.00%	0.78	0.046	0.001	13.4	0.080	0.042	(30.7%)	135,090	6,046	10.9%	NM
▲ Kuwait Co. For Process Plant Const. & Cont.	KCPC.KW	6.5	1.20	7.50%	0.47	0.293	0.016	32.3	0.338	0.173	21.6%	166,436	48,202	27.1%	18.5%
▲ Humansoft Holding Co.	HUMN.KW	8.8	3.93	7.13%	0.47	2.584	0.021	315.9	3.470	1.944	(14.2%)	301,471	773,410	29.9%	44.6%
= Gulf Franchising Co.	GFCL.KW	NM	1.01	0.00%	NA	0.065	0.000	2.6	0.148	0.001	(14.0%)	0	0	0.6%	NM
▲ National Shooting Co.	SHOOTING.KW	NM	0.30	0.00%	1.25	0.017	0.001	4.7	0.018	0.007	66.0%	241,900	3,660	71.3%	NM
▼ Combined Group Contracting Co.	CGCK.KW	7.3	0.56	12.41%	0.57	0.153	(0.004)	26.3	0.251	0.143	(38.4%)	728,889	110,507	72.5%	7.7%
= United Projects Group	UPAC.KW	9.8	1.21	3.66%	NA	0.465	0.000	91.7	0.512	0.367	(9.2%)	0	0	0.0%	12.3%
▲ ALAFCO Aviation Lease & Finance Co.*	ALAF.KW	6.5	0.45	5.26%	0.84	0.152	0.003	144.7	0.279	0.138	(44.1%)	4,143,538	627,779	18.2%	7.0%
▲ Mubarrad Holding Co.	MBRD.KW	9.0	0.44	8.79%	0.95	0.056	0.000	9.2	0.089	0.049	(36.4%)	735,335	40,942	65.2%	4.9%
▼ KGL Logistics Co.	LOGK.KW	6.6	0.18	0.00%	0.78	0.025	(0.000)	18.1	0.043	0.023	(34.0%)	562,808	13,690	21.8%	2.7%
▼ Integrated holding Co.	INTEGRATED.KW	10.4	1.20	8.04%	0.46	0.373	(0.003)	82.1	0.600	0.360	(32.3%)	276,558	102,652	19.9%	11.5%
= Sharjah Cement Co.	SCEM.KW	25.7	0.22	0.00%	0.23	0.042	0.000	25.7	0.066	0.042	0.0%	0	0	0.0%	0.9%
▲ Gulf Cement Co.	GCEM.KW	NM	0.38	0.00%	0.23	0.038	0.000	31.2	0.063	0.032	(30.8%)	20	1	1.3%	NM
= Umm Al-Qaiwain General Investments Co.	QIC.KW	13.0	0.45	7.50%	0.16	0.067	0.000	24.2	0.087	0.052	0.0%	0	0	0.0%	3.5%
▲ Fujairah Cement Industries Co.	FCEM.KW	16.3	0.14	0.00%	0.51	0.033	0.000	11.7	0.053	0.029	(26.9%)	21,308	700	5.2%	0.8%
= Ras-Al-Khaimah for White Cement Co.	RKWC.KW	20.3	0.52	7.69%	0.11	0.065	0.000	32.5	0.080	0.053	0.0%	0	0	0.0%	2.6%
<b>Industrials</b>		<b>13.0</b>	<b>0.86</b>	<b>3.76%</b>				<b>2,757.3</b>			<b>(16.2%)</b>	<b>13,407,392</b>	<b>5,142,660</b>		<b>6.7%</b>

# Boursa Kuwait Daily Bulletin

Sunday, August 16, 2020

Company	Reuters Ticker	Valuation Multiples				Price (KWD)		MKT Cap (KWD Mn.)	52 Weeks High (KWD)	52 Weeks Low (KWD)	YTD-20 Return #	Daily Trading Data		YTD-20 Capital Turnover	ROE
		Trailing P/E (X)	Trailing P/BV (X)	Dividend Yield	Beta	Closing	DTD Change					Volume (Shrs.)	Value (KWD)		
= Palms Agro Production Co.	PAPK.KW	NM	0.51	0.00%	0.23	0.060	0.000	3.1	0.060	0.025	49.3%	0	0	0.3%	NM
▼ Livestock Transport & Trading Co.	CATT.KW	34.9	1.02	0.00%	0.27	0.189	(0.006)	40.9	0.200	0.152	8.0%	285,526	54,234	11.0%	2.9%
= Danah Alsafat Foodstuff Co.	DANK.KW	NM	0.25	0.00%	0.75	0.012	0.000	1.3	0.032	0.010	(25.3%)	0	0	97.4%	NM
▲ Mezzan Holding Co.	MEZZ.KW	34.1	1.82	2.38%	0.46	0.618	0.003	192.4	0.639	0.428	23.6%	558,562	343,880	16.5%	5.3%
<b>Consumer Goods</b>		<b>NM</b>	<b>1.51</b>	<b>1.93%</b>		<b>237.8</b>		<b>20.5%</b>			<b>844,088</b>	<b>398,113</b>		<b>1.4%</b>	
= Advanced Technology Co.	ATCK.KW	53.7	1.72	1.52%	0.01	0.660	0.000	99.0	0.930	0.580	(18.5%)	0	0	0.0%	3.2%
= Yiacco Medical Co.	YIAC.KW	52.7	6.06	0.00%	NA	0.707	0.000	12.1	0.777	0.672	0.1%	0	0	0.0%	11.5%
= Al-Maidan Clinic For Oral Health Services Co.	MIDAN.KW	50.3	8.26	0.00%	0.00	1.220	0.000	305.0	1.220	1.220	0.0%	0	0	0.0%	16.4%
<b>Health Care</b>		<b>51.1</b>	<b>4.31</b>	<b>0.36%</b>		<b>416.1</b>		<b>(5.1%)</b>			<b>0</b>	<b>0</b>		<b>8.4%</b>	
= Kuwait National Cinema Co.	KCIN.KW	8.0	0.85	4.74%	0.26	0.680	0.000	68.7	1.050	0.655	(35.1%)	14,130	9,532	0.3%	10.6%
▼ Kuwait Hotels Co.	KHOT.KW	NM	1.23	0.00%	NA	0.085	(0.004)	4.9	0.101	0.069	(14.7%)	100	9	0.1%	NM
= Sultan Center Food Products Co.	SCFK.KW	15.0	0.74	0.00%	0.53	0.058	0.000	33.6	0.060	0.036	11.5%	0	0	6.5%	4.9%
= Kuwait Cable Vision Co.	KWTV.KW	NM	0.52	0.00%	0.22	0.014	0.000	0.5	0.027	0.012	0.0%	0	0	0.0%	NM
▲ IFA Hotels & Resorts Co.*	IFAH.KW	NM	0.86	0.00%	0.22	0.023	0.000	14.8	0.062	0.021	(57.6%)	10	0	2.6%	NM
▼ Oula Fuel Marketing Co.	OULA.KW	11.5	0.66	4.48%	0.46	0.110	(0.001)	44.5	0.134	0.095	(13.4%)	93,121	10,062	4.0%	5.7%
▲ Kuwait Resorts Co.	MUNK.KW	9.0	0.34	0.00%	0.70	0.049	0.001	9.6	0.064	0.040	(21.5%)	572,497	27,802	38.3%	3.8%
▲ Jazeera Airways Co.	JAZK.KW	8.0	2.98	5.84%	0.71	0.599	0.002	119.8	1.110	0.372	(45.5%)	164,899	98,237	21.1%	37.1%
▼ Soor Fuel Marketing Co.	SOOR.KW	12.8	0.67	4.54%	0.46	0.109	(0.001)	44.1	0.129	0.096	(12.8%)	42,401	4,607	4.6%	5.3%
▲ Future Kid Entertainment and R.E Co.	KIDK.KW	34.8	0.53	13.62%	0.03	0.087	0.002	10.1	0.110	0.069	(1.5%)	1,009	88	0.5%	1.5%
= Al Rai Media Group Co.	ALRA.KW	NM	0.83	0.00%	0.27	0.037	0.000	8.6	0.049	0.030	(2.4%)	0	0	0.3%	NM
▲ Jiyad Holding Co	JIYAD.KW	6.7	0.30	0.00%	0.61	0.033	0.002	11.7	0.047	0.029	(14.4%)	74,000	2,462	12.3%	4.5%
▼ Al Eid Food Co.	ALEID.KW	5.6	0.48	0.00%	0.00	0.084	(0.004)	8.4	0.096	0.046	5.8%	41,500	3,650	4.3%	8.7%
<b>Consumer Services</b>		<b>35.8</b>	<b>0.87</b>	<b>4.12%</b>		<b>379.3</b>		<b>(31.3%)</b>			<b>1,003,667</b>	<b>156,448</b>		<b>2.4%</b>	
▲ Zain	ZAIN.KW	11.7	1.96	5.62%	1.40	0.587	0.013	2,540.0	0.604	0.407	(2.2%)	7,547,280	4,408,031	15.4%	16.7%
▲ National Mobile Telecom Co.	OORE.KW	9.7	0.51	8.57%	0.46	0.580	0.004	292.3	0.835	0.550	(30.0%)	133,365	76,894	2.6%	5.3%
▲ AAN digital services Co.	AAN.KW	34.2	0.31	0.00%	1.33	0.010	0.000	9.1	0.021	0.009	(23.0%)	10,307,501	107,188	122.3%	0.9%
▲ Kuwait Telecommunication Co.	STC.KW	9.7	1.97	5.89%	0.58	0.849	0.011	424.0	0.870	0.680	7.7%	12,933	10,779	2.1%	20.2%
▲ Hayat Communications Co.	HAYK.KW	24.7	0.50	0.00%	1.15	0.055	0.005	5.1	0.098	0.025	(26.7%)	500	28	5.5%	2.0%
<b>Telecommunications</b>		<b>11.2</b>	<b>1.54</b>	<b>5.90%</b>		<b>3,270.5</b>		<b>(4.3%)</b>			<b>18,001,579</b>	<b>4,602,919</b>		<b>13.7%</b>	
▲ National Bank of Kuwait	NBKK.KW	14.1	1.65	3.98%	1.28	0.826	0.012	5,658.3	1.062	0.654	(18.9%)	3,881,328	3,190,962	14.0%	11.7%
▲ Gulf Bank	GBKK.KW	9.8	0.94	5.10%	1.13	0.205	0.004	624.9	0.317	0.180	(32.3%)	5,758,009	1,181,305	31.9%	9.6%
= Commercial Bank of Kuwait	CBKK.KW	NM	1.40	3.87%	0.39	0.514	0.000	1,023.9	0.555	0.465	(2.8%)	816,412	408,220	1.3%	0.0%
▲ Ahli Bank of Kuwait	ABKK.KW	9.5	0.46	4.11%	0.62	0.169	0.001	273.6	0.325	0.156	(34.0%)	227,022	38,267	6.1%	4.8%
▲ Ahli United Bank - Kuwait	BKME.KW	10.4	1.26	4.90%	0.86	0.264	0.010	571.8	0.336	0.225	(18.9%)	655,868	171,794	5.4%	12.1%
= Kuwait International Bank	KIBK.KW	11.2	0.69	3.54%	1.00	0.170	0.000	192.6	0.271	0.162	(34.9%)	5,078,907	861,739	83.8%	6.1%
▲ Burgan Bank	BURG.KW	5.9	0.67	6.27%	1.05	0.191	0.003	501.4	0.355	0.175	(37.2%)	1,611,869	306,013	13.2%	11.3%
▲ Kuwait Finance House	KFH.KW	18.9	2.30	2.91%	1.42	0.618	0.004	4,742.6	0.761	0.473	(16.2%)	10,063,918	6,224,762	20.7%	12.2%
▼ Boubyan Bank	BOUK.KW	28.9	3.15	1.43%	1.05	0.556	(0.001)	1,812.7	0.638	0.380	(1.9%)	2,098,501	1,174,621	4.8%	10.9%
▲ Warba Bank	WARB.KW	19.4	1.47	0.00%	0.99	0.204	0.002	321.3	0.279	0.164	(22.1%)	1,343,132	271,972	26.1%	7.6%
▲ Ahli United Bank - Bahrain	AUBK.KW	9.4	1.61	8.42%	1.11	0.214	0.012	2,083.8	0.311	0.160	(26.5%)	35,170,525	7,430,037	32.0%	17.1%
= Ithmaar Bank	ITHMR.KW	NM	2.33	0.00%	0.77	0.022	0.000	67.6	0.025	0.021	0.0%	0	0	0.0%	0.7%
<b>Banks</b>		<b>14.9</b>	<b>1.61</b>	<b>3.99%</b>		<b>17,874.4</b>		<b>(18.7%)</b>			<b>66,705,491</b>	<b>21,259,690</b>		<b>10.8%</b>	

# Boursa Kuwait Daily Bulletin

Sunday, August 16, 2020

Company	Reuters Ticker	Valuation Multiples				Price (KWD)		MKT Cap (KWD Mn.)	52 Weeks High (KWD)	52 Weeks Low (KWD)	YTD-20 Return #	Daily Trading Data		YTD-20 Capital Turnover	ROE
		Trailing P/E (X)	Trailing P/BV (X)	Dividend Yield	Beta	Closing	DTD Change					Volume (Shrs.)	Value (KWD)		
▼ Kuwait Insurance Co.	KINS.KW	6.9	0.59	8.40%	NA	0.340	(0.005)	66.0	0.387	0.298	3.0%	110,000	37,400	0.9%	8.5%
▲ Gulf Insurance Group	GINS.KW	8.4	1.03	6.07%	0.06	0.599	0.019	112.0	0.687	0.556	(9.2%)	10	6	0.1%	12.3%
▲ Ahleiah Insurance Co.	AINS.KW	7.9	0.74	6.08%	0.12	0.404	0.004	80.8	0.445	0.385	(5.6%)	800	323	0.8%	9.4%
▼ Warba Insurance Co.	WINS.KW	12.5	0.38	0.00%	0.37	0.085	(0.000)	14.6	0.096	0.053	36.3%	76,606	6,500	1.8%	3.1%
= Kuwait Reinsurance Co.	KWRE.KW	8.4	0.75	2.36%	0.02	0.195	0.000	39.8	0.195	0.126	41.3%	0	0	0.1%	8.9%
▲ First Takaful Insurance Co.	FTIK.KW	5.3	0.51	0.00%	0.33	0.042	0.000	4.5	0.056	0.031	10.2%	11,653	468	2.3%	9.6%
▼ Wethaq Takaful Insurance Co.	WETH.KW	NM	0.21	0.00%	0.38	0.023	(0.002)	2.5	0.035	0.018	(8.0%)	230,100	5,333	8.5%	NM
= Bahrain Kuwait Insurance Co.	BKIK.KW	13.1	0.94	7.50%	0.02	0.200	0.000	28.6	0.220	0.190	0.0%	0	0	0.0%	7.2%
<b>Insurance</b>		<b>8.3</b>	<b>0.74</b>	<b>5.83%</b>				<b>348.8</b>			<b>0.4%</b>	<b>429,169</b>	<b>50,031</b>		<b>8.9%</b>
= Sokouk Holding Co.	SHCK.KW	NM	0.28	0.00%	1.16	0.023	0.000	13.6	0.040	0.022	(34.7%)	706,275	16,101	19.4%	NM
▲ Kuwait Real Estate Co.	KREK.KW	11.6	0.64	0.00%	0.99	0.086	0.003	81.4	0.115	0.070	(18.2%)	2,850,351	243,058	15.4%	5.5%
= United Real Estate Co.	UREK.KW	NM	0.31	0.00%	0.36	0.048	0.000	57.0	0.065	0.045	(21.7%)	53,430	2,565	0.6%	NM
▼ National Real Estate Co.	NREK.KW	8.5	0.35	0.00%	1.15	0.071	(0.001)	96.7	0.095	0.060	(22.3%)	1,930,477	135,865	16.0%	4.2%
▲ Salhia Real Estate Co.	SREK.KW	9.7	1.28	5.90%	0.34	0.408	0.008	209.2	0.460	0.324	(2.2%)	263,610	107,500	4.4%	13.2%
▲ Tamdeen Real Estate Co.	TAMK.KW	14.4	0.56	1.91%	0.10	0.254	0.002	109.7	0.343	0.248	(20.9%)	3,000	750	0.5%	3.9%
= Ajial Real Estate Entertainment Co.	AREC.KW	12.3	0.20	0.00%	0.50	0.133	0.000	24.6	0.224	0.121	(26.5%)	0	0	3.8%	1.6%
= Al Massaleh Real Estate Co.	MREC.KW	NM	0.33	0.00%	0.23	0.029	0.000	6.8	0.040	0.026	(21.6%)	0	0	1.4%	NM
▲ Arab Real Estate Co.	ARAB.KW	7.0	0.20	0.00%	1.18	0.023	0.001	11.7	0.033	0.020	(22.0%)	100	2	19.2%	2.9%
▲ AL-Enma'a Real Estate Co.*	ENMA.KW	17.3	0.39	0.00%	0.63	0.039	0.001	17.6	0.079	0.037	(37.6%)	321,250	12,238	10.1%	2.3%
▲ Mabanee Co.	MABK.KW	13.2	1.57	1.96%	1.09	0.672	0.023	742.6	0.878	0.434	(21.3%)	1,691,121	1,122,787	16.4%	11.9%
= Injazzat Real Estate Development Co.	INJA.KW	NM	0.52	8.63%	0.20	0.079	0.000	27.3	0.091	0.061	(1.3%)	0	0	1.0%	NM
▲ Investors Holding Group Co.	INVK.KW	NM	0.66	0.00%	1.16	0.013	0.000	8.1	0.017	0.007	62.5%	441,901	5,699	213.8%	NM
▲ The Commercial Real Estate Co.	TIJK.KW	11.0	0.55	5.39%	0.53	0.091	0.000	161.1	0.103	0.083	(2.8%)	326,273	29,532	5.6%	5.0%
= Sanam Real Estate Co.	SANK.KW	36.8	0.34	0.00%	0.37	0.027	0.000	3.3	0.043	0.027	(32.5%)	0	0	2.3%	0.9%
▲ A'ayan Real Estate Co.	AYRE.KW	10.0	0.30	9.66%	0.58	0.051	0.001	21.2	0.080	0.048	(30.2%)	31,500	1,547	1.6%	3.0%
= Aqar Real Estate Investment Co.	AQAR.KW	7.3	0.63	5.75%	NA	0.075	0.000	18.4	0.089	0.062	(1.6%)	0	0	1.4%	8.7%
▼ Kuwait Real Estate Holding Co.	ALAQ.KW	41.4	0.46	0.00%	0.54	0.026	(0.000)	4.9	0.034	0.023	(10.8%)	17,123	407	7.8%	1.1%
▲ MAZAYA Holding Co.	MAZA.KW	NM	0.44	0.00%	1.00	0.051	0.000	35.2	0.067	0.047	(13.5%)	132,986	6,518	13.6%	NM
= Tijara Real Estate & Investment Co.	TIJA.KW	10.3	0.37	5.13%	0.30	0.039	0.000	14.4	0.055	0.034	(22.0%)	0	0	0.1%	3.6%
= Al TAMEER Real Estate Investment Co.	AMAR.KW	NM	0.28	0.00%	0.95	0.018	0.000	4.3	0.034	0.013	(32.5%)	84,932	1,469	65.9%	NM
= Arkan Al-Kuwait Real Estate Co. *	ARKK.KW	9.0	0.59	9.64%	0.22	0.083	0.000	20.8	0.100	0.076	(6.6%)	1,000	83	8.9%	6.6%
▲ Al-Argan International Real Estate Co.	ARGK.KW	31.0	0.28	5.24%	0.42	0.092	0.002	24.4	0.143	0.060	(12.4%)	100	9	0.3%	0.9%
▲ Abyaar Real Estate Development Co.	ABYR.KW	NM	0.16	0.00%	1.21	0.007	0.001	8.2	0.015	0.005	(5.1%)	11,817,795	85,841	47.9%	NM
= Munshaat Real Estate Projects Co.	MUNS.KW	17.7	0.33	0.00%	0.64	0.048	0.000	15.5	0.086	0.047	(35.1%)	0	0	5.0%	1.8%
▼ First Dubai For Real Estate Development	FIRST.KW	38.5	0.47	0.00%	1.44	0.035	(0.001)	35.1	0.055	0.026	(1.4%)	406,034	14,354	23.0%	1.2%
▲ Kuwait Business Town Real Estate Co.	KBTK.KW	7.4	0.27	0.00%	1.03	0.029	0.000	18.2	0.046	0.027	(34.1%)	1,111,358	31,995	25.9%	3.6%
= Real Estate Asset Management Co.	REAM.KW	NM	0.68	0.00%	0.06	0.094	0.000	10.3	0.140	0.060	7.1%	0	0	0.1%	NM
= MENA Real Estate Co. *	MENK.KW	NM	0.17	0.00%	0.98	0.025	0.000	3.4	0.043	0.021	(39.6%)	5,090	124	69.9%	NM
= Al Mudon International Real Estate Co.	ALMK.KW	NM	0.12	0.00%	0.87	0.016	0.000	1.6	0.029	0.015	(35.1%)	0	0	23.7%	NM
▼ Real Estate Trade Centers Co.	MARA.KW	NM	0.15	0.00%	0.33	0.025	(0.001)	3.5	0.050	0.018	7.8%	14,500	346	25.0%	0.1%
▼ Kuwait Remal Real Estate Co.	REMAK.KW	NM	0.20	0.00%	0.83	0.015	(0.000)	4.5	0.029	0.013	(39.3%)	417,246	6,173	14.0%	NM
= Mashaer Holding Co.	MASHAER.KW	6.3	0.45	8.62%	0.53	0.058	0.000	10.4	0.086	0.048	(25.3%)	0	0	29.6%	7.1%
= Effect Real Estate Co.	EFFECT.KW	NM	0.29	0.00%	0.45	0.021	0.000	1.7	0.024	0.020	0.0%	0	0	0.0%	NM
▼ Ajwan Gulf Real Estate Co.	AJWN.KW	NM	0.19	0.00%	0.59	0.011	(0.001)	2.2	0.016	0.009	(30.0%)	7,333,995	78,283	114.0%	NM
= Al Masaken Intl. Real Estate Dev. Co.	MASKN.KW	NM	0.44	0.00%	0.13	0.038	0.000	3.8	0.074	0.027	(13.0%)	0	0	0.3%	NM
= Dalqan Real Estate Co.	DALQ.KW	48.3	2.44	0.00%	NA	0.350	0.000	15.8	0.385	0.333	0.0%	0	0	0.0%	5.1%
▼ Dar Al Thuraya Real Estate Co.	THURY.KW	33.7	1.20	0.00%	0.02	0.128	(0.001)	18.8	0.190	0.040	82.6%	215	27	2.1%	3.6%
▼ Osos Holding Group Co.	OSOS.KW	7.0	0.74	7.15%	0.26	0.093	(0.002)	9.8	0.118	0.084	(6.7%)	24,064	2,173	6.9%	10.5%
<b>Real Estate</b>		<b>23.8</b>	<b>0.65</b>	<b>2.60%</b>				<b>1,877.3</b>			<b>(16.9%)</b>	<b>29,985,726</b>	<b>1,905,448</b>		<b>2.7%</b>

# Boursa Kuwait Daily Bulletin

Sunday, August 16, 2020

Company	Reuters Ticker	Valuation Multiples				Price (KWD)		MKT Cap (KWD Mn.)	52 Weeks High (KWD)	52 Weeks Low (KWD)	YTD-20 Return #	Daily Trading Data		YTD-20 Capital Turnover	ROE
		Trailing P/E (X)	Trailing P/BV (X)	Dividend Yield	Beta	Closing	DTD Change					Volume (Shrs.)	Value (KWD)		
▲ Kuwait Investment Co.	KINV.KW	3.3	0.46	14.20%	0.71	0.105	0.002	57.9	0.172	0.095	(30.0%)	1,657,070	175,075	20.1%	13.9%
▼ Commercial Facilities Co.	FACI.KW	7.5	0.60	9.31%	0.52	0.183	(0.007)	98.2	0.235	0.179	(15.7%)	28,002	5,142	4.4%	8.0%
▲ Int'l Financial Advisors Co.	IFIN.KW	NM	0.97	0.00%	1.32	0.030	0.000	8.0	0.060	0.027	(43.8%)	200,001	5,970	31.4%	NM
▲ National Investment Co.	NINV.KW	8.7	0.51	7.73%	1.23	0.106	0.003	92.9	0.155	0.080	(23.2%)	3,019,733	317,837	21.6%	5.9%
▲ Kuwait Projects Co.(Holding)	KPRO.KW	10.0	0.89	6.56%	0.57	0.150	0.002	300.0	0.231	0.147	(30.6%)	3,124,091	466,663	7.1%	8.9%
= Coast Invest. & Development Co.	COAS.KW	33.5	0.37	0.00%	1.33	0.031	0.000	19.6	0.045	0.026	(21.5%)	0	0	17.1%	1.1%
▼ The Securities House Co.	SECH.KW	NM	0.52	0.00%	1.14	0.038	(0.000)	20.9	0.063	0.027	(17.1%)	4,406,464	165,164	39.2%	NM
▲ Arzan Financial Group For Fin. & Invest.	ARZA.KW	30.5	0.34	0.00%	1.01	0.042	0.003	33.4	0.047	0.022	75.5%	10,113,824	408,998	140.0%	1.1%
▲ Kuwait Financial Centre	MARKZ.KW	5.0	0.37	6.90%	0.77	0.073	0.001	34.9	0.121	0.070	(31.6%)	433,000	30,928	22.8%	7.3%
▲ Kuwait & M.E. Financial Inv. Co.	KMEF.KW	47.5	1.93	0.00%	0.61	0.118	0.005	31.1	0.117	0.052	31.8%	5,701,489	673,850	14.0%	4.1%
▼ First Investment Co.	OLAK.KW	NM	0.42	0.00%	1.02	0.027	(0.001)	17.5	0.045	0.022	(21.8%)	1,017,161	27,719	164.6%	NM
= Al-Mal Investment Co.	MALK.KW	NM	0.38	0.00%	1.22	0.009	0.000	2.9	0.016	0.008	(7.1%)	76,357	693	75.5%	NM
▲ Gulf Investment House	GIHK.KW	NM	1.12	0.00%	0.99	0.063	0.002	40.9	0.078	0.038	(2.2%)	3,372,775	207,854	10.1%	0.6%
▲ A'ayan Leasing & Investment Co.	AAYA.KW	NM	0.51	0.00%	1.26	0.043	0.001	34.6	0.066	0.032	(9.0%)	497,911	21,069	87.6%	NM
= Bayan Investment Co.	BAYK.KW	NM	0.54	0.00%	0.85	0.049	0.000	19.0	0.053	0.031	27.3%	0	0	5.5%	NM
▲ Osoul Investment Co.	OSUL.KW	7.1	0.59	13.16%	0.44	0.083	0.003	13.0	0.121	0.065	10.7%	30,401	2,447	24.7%	8.3%
▲ Kuwait Finance & Investment Co.	KFSK.KW	19.9	0.35	0.00%	0.30	0.043	0.001	13.7	0.058	0.038	(14.1%)	32,001	1,252	8.1%	1.8%
= Kamco Investment Co.	KAMC.KW	7.7	0.41	7.35%	0.38	0.068	0.000	23.3	0.111	0.060	(24.4%)	244,410	16,598	10.2%	5.4%
= National International Holding Co.	NIHK.KW	8.4	0.37	6.79%	0.68	0.068	0.000	14.7	0.085	0.051	(11.7%)	0	0	3.5%	4.4%
▼ UniCap Investment and Finance	UNICAP.KW	NM	0.38	0.00%	0.63	0.036	(0.002)	8.7	0.057	0.035	(34.2%)	141,659	5,126	5.9%	NM
▲ Al Madar Finance & Investment Co.	MADR.KW	12.0	0.73	6.21%	0.33	0.078	0.003	16.7	0.148	0.062	(15.9%)	10,166	793	6.4%	6.1%
= Al-Deera Holding	DEER.KW	NM	0.71	0.00%	0.84	0.016	0.000	3.2	0.022	0.011	(18.5%)	0	0	5.3%	NM
▼ Al Salam Group Holding Co.	SAGH.KW	NM	0.20	0.00%	1.27	0.023	(0.000)	6.1	0.039	0.018	(23.2%)	2,689,446	60,059	142.2%	0.1%
▼ Ektitab Holding Co.	EKTT.KW	NM	0.29	0.00%	1.00	0.012	(0.000)	3.9	0.019	0.010	(18.0%)	617,136	7,555	33.1%	NM
▲ Al Madina For Finance & Investment Co.	MADI.KW	NM	0.37	0.00%	1.21	0.011	0.000	4.4	0.019	0.009	(28.0%)	898,639	9,563	131.4%	NM
▲ NOOR Financial Investment Co.	NOOR.KW	7.5	0.93	4.10%	1.23	0.146	0.012	60.3	0.184	0.076	22.7%	3,859,639	551,526	47.6%	12.5%
= Tamdeen Investment Co.	TAMI.KW	10.0	0.30	5.00%	0.32	0.239	0.000	82.5	0.400	0.199	(30.7%)	0	0	0.3%	3.0%
▼ Kuwait Syrian Holding Co.	KSHC.KW	NM	0.27	0.00%	0.74	0.031	(0.001)	5.5	0.044	0.022	(1.6%)	10,000	298	24.5%	NM
= Asiya Capital Investment Co.	ASIYA.KW	16.4	0.35	0.00%	0.52	0.031	0.000	24.7	0.041	0.029	(24.4%)	199,739	5,892	0.8%	2.1%
= Gulf North Africa Holding Co.	GNAH.KW	70.9	0.73	0.00%	1.10	0.055	0.000	8.3	0.062	0.052	(11.3%)	0	0	3.8%	1.0%
= Amwal International Investment Co.	AMWA.KW	13.3	0.66	0.00%	0.39	0.036	0.000	6.5	0.055	0.030	20.3%	0	0	0.0%	5.0%
▼ Alimtiq Investment Group	ALIMK.KW	5.0	0.46	8.76%	0.96	0.088	(0.000)	99.2	0.138	0.071	(30.6%)	545,327	47,497	32.8%	9.1%
= Tamkeen Holding Co.	TAMKE.KW	NM	0.05	0.00%	NA	0.005	0.000	0.3	0.007	0.005	0.0%	0	0	0.0%	NM
▲ Manazel Holding Co.	MANK.KW	19.1	0.65	0.00%	1.39	0.030	0.000	12.8	0.048	0.021	(24.2%)	1,563,439	45,999	28.3%	3.4%
= National Industries Group	NIND.KW	4.9	0.63	6.29%	1.43	0.159	0.000	227.0	0.252	0.121	(34.0%)	4,365,767	687,123	33.7%	12.9%
▲ Warba Capital Holding Co.	WARBACAP.KW	NM	0.60	0.00%	0.71	0.054	0.003	5.4	0.070	0.045	(16.3%)	10	1	8.2%	NM
= Arabi Holding Group Co.	AGHC.KW	NM	1.38	0.00%	0.15	0.198	0.000	34.2	0.337	0.074	(27.7%)	0	0	3.1%	0.5%
▲ Privatization Holding Co.	KPPC.KW	NM	0.30	0.00%	0.80	0.043	0.002	25.9	0.059	0.037	(14.1%)	11	0	5.3%	NM
= Credit Rating & Collection Co.	TAHS.KW	NM	1.08	0.00%	NA	0.035	0.000	5.8	0.037	0.015	76.0%	0	0	0.2%	NM
▲ Egypt Kuwait Holding Co.	ECHK.KW	12.9	2.35	0.00%	0.16	0.374	0.034	383.1	0.500	0.318	(16.9%)	600	208	0.0%	18.2%
▲ GFH Financial Group	GFH.KW	10.3	0.82	8.20%	0.87	0.049	0.002	250.2	0.075	0.042	(28.9%)	311	15	1.3%	8.0%
= Inovest	INOV.KW	8.0	0.41	8.28%	0.71	0.058	0.000	17.3	0.070	0.044	(9.9%)	0	0	3.5%	5.2%
= Al Bareeq Holding	BAREEQ.KW	36.2	1.90	0.00%	0.04	0.105	0.000	79.2	0.110	0.100	5.0%	0	0	1.7%	5.2%
= Amar For Finance and Leasing Co.	AMARF.KW	38.5	0.51	0.00%	0.07	0.045	0.000	9.0	0.066	0.037	18.2%	0	0	10.9%	1.3%
= Al-Manar Financing & Leasing Co.	ALMANAR.KW	12.9	0.45	0.00%	NA	0.050	0.000	15.4	0.060	0.037	(3.5%)	0	0	6.3%	3.5%
Financial Services		15.9	0.68	4.56%				2,272.3			(17.9%)	48,856,579	3,948,913		4.3%

# Boursa Kuwait Daily Bulletin

Sunday, August 16, 2020

Company	Reuters Ticker	Valuation Multiples				Price (KWD)		MKT Cap (KWD Mn.)	52 Weeks High (KWD)	52 Weeks Low (KWD)	YTD-20 Return #	Daily Trading Data		YTD-20 Capital Turnover	ROE
		Trailing P/E (X)	Trailing P/BV (X)	Dividend Yield	Beta	Closing	DTD Change					Volume (Shrs.)	Value (KWD)		
= Automated Systems Co.	ASCK.KW	NM	0.48	6.50%	0.13	0.062	0.000	6.1	0.086	0.051	(13.1%)	0	0	0.8%	NM
<b>Technology</b>		<b>NM</b>	<b>0.48</b>	<b>6.50%</b>				<b>6.1</b>			<b>(13.1%)</b>	<b>0</b>	<b>0</b>		<b>NM</b>
= Shamal Az-Zour Al-Oula Power and Water Co.	AZNOULA.KW	34.0	5.46	0.00%	NA	0.380	0.000	418.0	N/A	N/A	N/A	52,947,447	21,878,410	4.8%	16.1%
<b>Utilities</b>		<b>34.0</b>	<b>5.46</b>	<b>0.00%</b>				<b>418.0</b>			<b>N/A</b>	<b>52,947,447</b>	<b>21,878,410</b>		
<b>Boursa Kuwait</b>		<b>15.0</b>	<b>1.24</b>	<b>4.08%</b>				<b>30,803.6</b>			<b>(15.25%)</b>	<b>238,682,393</b>	<b>59,891,661</b>		<b>8.3%</b>

## Year-to-Date 2020 Top Movers & Most Active Stocks

YTD Top % Gainers	Close (KWD)	Percent Change
Shamal Az-Zour Al-Oula Power and Water Co	0.380	N/A
Dar Al Thuraya Real Estate Co.	0.128	82.6%
Credit Rating & Collection Co.	0.035	76.0%
Arzan Financial Group For Fin. & Invest.	0.042	75.5%
National Shooting Co.	0.017	66.0%
YTD Most Active by Volume	Close (KWD)	Volume (Shrs.)
Ahli United Bank - Bahrain	0.214	3,112,138,402
Kuwait Finance House	0.618	1,591,673,671
Investors Holding Group Co.	0.013	1,331,953,600
Arzan Financial Group For Fin. & Invest.	0.042	1,123,865,943
Gulf Petroleum Investment	0.017	1,073,145,926

YTD Top % Losers	Close (KWD)	Percent Change
IFA Hotels & Resorts Co.	0.023	(57.6%)
Jazeera Airways Co.	0.599	(45.5%)
ALAFCO Aviation Lease & Finance Co.	0.152	(44.1%)
Int'l Financial Advisors Co.	0.030	(43.8%)
Salbookh Trading Co.	0.030	(40.5%)
YTD Most Active by Value	Close (KWD)	Value (KWD)
Kuwait Finance House	0.618	1,043,756,368
National Bank of Kuwait	0.826	807,103,894
Ahli United Bank - Bahrain	0.214	671,494,718
Zain	0.587	352,926,073
Agility (PWC Logistics)	0.640	288,171,810

\* Different Fiscal Year Company

## Disclaimer & Important Disclosures

Kamco Invest is authorized and fully regulated by the Capital Markets Authority ("CMA, Kuwait") and partially regulated by the Central Bank of Kuwait ("CBK").

This document is provided for informational purposes only. Nothing contained in this document constitutes investment, an offer to invest, legal, tax or other advice or guidance and should be disregarded when considering or making investment decisions. In preparing this document, Kamco Invest did not take into account the investment objectives, financial situation and particular needs of any particular person. Accordingly, before acting on this document, investors should independently evaluate the investments and strategies referred to herein and make their own determination of whether it is appropriate in light of their own financial circumstances and objectives. The entire content of this document is subject to copyright with all rights reserved. This research and the information contained herein may not be reproduced, distributed or transmitted in Kuwait or in any other jurisdiction to any other person or incorporated in any way into another document or other material without our prior written consent.

### Analyst Certification

Each of the analysts identified in this report certifies, with respect to the sector, companies or securities that the individual analyses, that (1) the views expressed in this report reflect his or her personal views about all of the subject companies and securities and (2) no part of his or her compensation was, is or will be directly or indirectly dependent on the specific recommendations or views expressed in this report.

### Kamco Invest Ratings

Kamco Invest research is based on the analysis of regional and country economics, industries and company fundamentals. Kamco Invest company research reflects a long-term (12-month) target price for a company or stock. The ratings bands are:

\* **Outperform:** Target Price represents expected returns >= 10% in the next 12 months

\* **Neutral:** Target Price represents expected returns between 10% and +10% in the next 12 months

\* **Underperform:** Target Price represents an expected return of <10% in the next 12 months  
In certain circumstances, ratings may differ from those implied by a fair value target using the criteria above. Kamco Invest policy is to maintain up-to-date fair value targets on the companies under its coverage, reflecting any material changes to the analyst's outlook on a company. Share price volatility may cause a stock to move outside the rating range implied by Kamco Invest's fair value target. Analysts may not necessarily change their ratings if this happens, but are expected to disclose the rationale behind their view to Kamco Invest clients.

Any terms and conditions proposed by you which are in addition to or which conflict with this Disclaimer are expressly rejected by Kamco Invest and shall be of no force or effect. The information contained in this document is based on current trade, statistical and other public information we consider reliable. We do not represent or warrant that such information is fair, accurate or complete and it should not be relied upon as such. Kamco Invest has no obligation to update, modify or amend this document or to otherwise notify a recipient thereof in the event that any opinion, forecast or estimate set forth herein, changes or subsequently becomes inaccurate. The publication is provided for informational uses only and is not intended for trading purposes. The information on publications does not give rise to any legally binding obligation and/or agreement, including without limitation any obligation to update such information. You shall be responsible for conducting your own investigation and analysis of the information contained or referred to in this document and of evaluating the merits and risks involved in the securities forming the subject matter of this or other such document. Moreover, the provision of certain data/information in the publication may be subject to the terms and conditions of other agreements to which Kamco Invest is a party.

Nothing in this document should be construed as a solicitation or offer, or recommendation, to acquire or dispose of any investment or to engage in any other transaction, or to provide any investment advice or service. This document is directed at Professional Clients and not Retail Clients within the meaning of CMA rules. Any other persons in receipt of this document must not rely upon or otherwise act upon it. Entities and individuals into whose possession this document comes are required to inform themselves about, and observe such restrictions and should not rely upon or otherwise act upon this document where it is unlawful to make to such

Kamco Investment Company (DIFC) Limited ("Kamco Invest DIFC"), Office 205, Level 2, Gate Village 1, Dubai International Financial Centre, a wholly owned subsidiary of Kamco Investment Company KSC (Public), is regulated by the Dubai Financial Services Authority (DFSA). Kamco Invest DIFC may only undertake the financial services activities that fall within the scope of its existing DFSA licence. The information in this document may be distributed by Kamco Invest DIFC on behalf of Kamco Investment Company KSC (Public). This document is intended for Professional Clients or Market Counterparties only as defined by the DFSA, and no other person should act upon it.

### Risk Warnings

Any prices, valuations or forecasts are indicative and are not intended to predict actual results, which may differ substantially from those reflected. The value of an investment may go up as well as down. The value of and income from any investment may fluctuate from day to day as a result of changes in relevant economic markets (including, without limitation, foreseeable or unforeseeable changes in interest rates, foreign exchange rates, default rates, prepayment rates, political or financial conditions, etc.).

Past performance is not indicative of future results. Any opinions, estimates, valuations or projections (target prices and ratings in particular) are inherently imprecise and a matter of judgment. They are statements of opinion and not of fact, based on current expectations, estimates and projections, and rely on beliefs and assumptions. Actual outcomes and returns may differ materially from what is expressed or forecasted. There are no guarantees of future performance. Certain transactions, including those involving futures, options, and other derivatives, give rise to substantial risk and are not suitable for all investors. This document does not propose to identify or to suggest all of the risks (direct or indirect) which may be associated with the investments and strategies referred to herein.

### Conflict of Interest

Kamco Invest and its affiliates provide full investment banking services, and they and their directors, officers and employees, may take positions which conflict with the views expressed in this document. Salespeople, traders, and other professionals of Kamco Invest may provide oral or written market commentary or trading strategies to our clients and our proprietary trading desks that reflect opinions that are contrary to the opinions expressed in this document. Our asset management area, our proprietary trading desks and investing businesses may make investment decisions that are inconsistent with the recommendations or views expressed in this document. Kamco Invest may have or seek investment banking or other business relationships for which it will receive compensation from the companies that are the subject of this document. Facts and views presented in this document have not been reviewed by, and may not reflect information known to, professionals in other Kamco Invest business areas, including investment banking personnel. United Gulf Bank, Bahrain owns majority of Kamco Invest's shareholding and this ownership may create, or may create the appearance of, conflicts of interest.

### No Liability & Warranty

Kamco Invest makes neither implied nor expressed representations or warranties and, to the fullest extent permitted by applicable law, we hereby expressly disclaim any and all express, implied and statutory representations and warranties of any kind, including, without limitation, any warranty as to accuracy, timeliness, completeness, and fitness for a particular purpose and/or non-infringement. Kamco Invest will accept no liability in any event including (without limitation) your reliance on the information contained in this document, any negligence for any damages or loss of any kind, including (without limitation) direct, indirect, incidental, special or consequential damages, expenses or losses arising out of, or in connection with your use or inability to use this document, or in connection with any error, omission, defect, computer virus or system failure, or loss of any profit, goodwill or reputation, even if expressly advised of the possibility of such loss or damages, arising out of or in connection with your use of this document. We do not exclude our duties or liabilities under binding applicable law.