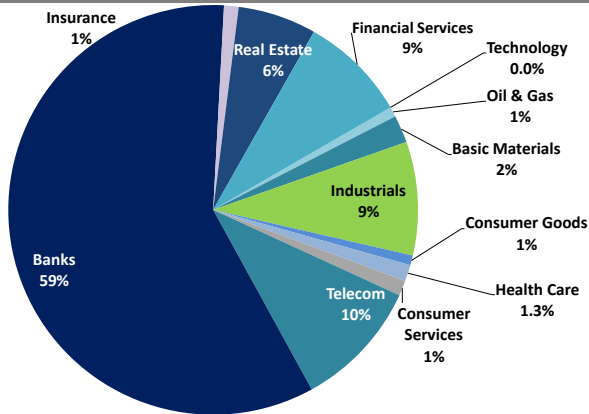


Boursa Kuwait Daily Report

September 15, 2020

Sector Weight by Market Cap



Top 10 Companies by Market Capitalization

Company Name	Market Cap. (Mn KWD)	P/E (X)	ROE* (%)
1- National Bank of Kuwait	5,898.0	19.4	9.8%
2- Kuwait Finance House	4,834.7	24.1	10.7%
3- Zain	2,479.4	12.2	16.6%
4- Ahli United Bank - Bahrain	2,200.7	11.2	16.6%
5- Boubayan Bank	1,923.6	37.8	10.3%
6- Agility (PWC Logistics)	1,267.1	20.7	5.5%
7- Commercial Bank of Kuwait	996.0	NM	NM
8- Mabanee Co.	726.0	24.1	6.5%
9- Gulf Bank	661.4	12.9	8.6%
10- Ahli United Bank - Kuwait	617.3	14.7	9.7%
Total	21,604	19.10	10.2%

*: ROE is calculated based on TTM 1H-2020 net profit & shareholders' equity as of 30-June-20

Top Movers and Most Active Stocks

Today's Top % Gainers	Close (KWD)	Change (KWD)	Percent Change
Kuwait Real Estate Holding Co.	0.026	0.002	8.3%
Kuwait Resorts Co.	0.052	0.003	5.7%
UniCap Investment and Finance	0.043	0.002	4.9%
Kuwait National Cinema Co.	0.698	0.028	4.2%
Aqar Real Estate Investment Co.	0.062	0.002	3.7%

Today's Top % Losers	Close (KWD)	Change (KWD)	Percent Change
Investors Holding Group Co.	0.015	(0.007)	(31.6%)
Dar Al Thuraya Real Estate Co.	0.114	(0.011)	(8.8%)
Senegy Holding Co.	0.018	(0.002)	(7.7%)
Gulf Petroleum Investment	0.020	(0.001)	(6.5%)
Al Salam Group Holding Co.	0.027	(0.002)	(6.3%)

Today's Most Active by Volume	Close (KWD)	Percent Change	Volume (Shares)
Investors Holding Group Co.	0.015	(31.6%)	143,917,994
A'ayan Leasing & Investment Co.	0.088	(2.3%)	78,590,314
Gulf Petroleum Investment	0.020	(6.5%)	28,028,407
Kuwait International Bank	0.186	2.2%	23,414,194
Gulf Bank	0.217	1.4%	21,762,918

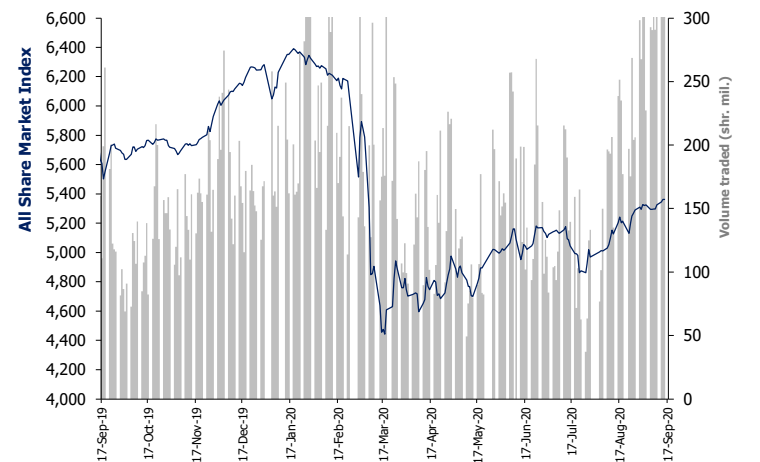
Source: Boursa Kuwait, Kamco Invest Research

Market Capitalization - Sector Returns

	Market Cap. (KWD Mn)	DTD	DTD % Chg	MTD % Chg	YTD % Chg
Boursa Kuwait	31,984.2	▼	(0.0%)	2.1%	(12.0%)
Oil & Gas	246.8	▼	(0.6%)	2.1%	(4.3%)
Basic Materials	689.2	▲	1.4%	(0.8%)	(14.7%)
Industrials	2,830.6	▼	(0.3%)	2.8%	(14.0%)
Consumer Goods	238.8	▲	0.8%	(3.2%)	21.0%
Health Care	411.2	=	0.0%	0.0%	(6.3%)
Consumer Services	376.8	▲	0.6%	2.4%	(31.7%)
Telecommunications	3,220.2	▼	(0.7%)	(1.9%)	(5.8%)
Banks	18,601.4	▲	0.1%	0.9%	(15.4%)
Insurance	362.1	▼	(0.2%)	2.9%	4.3%
Real Estate	1,962.6	▲	0.2%	5.6%	(13.2%)
Financial Services	2,666.5	▼	(0.7%)	13.9%	(3.7%)
Technology	7.2	▼	(1.4%)	5.4%	1.7%
Utilities	370.7	▲	0.9%	5.3%	N/A

Market Breadth	▲ 46	▼ 67	■ 61		
Benchmark Return	Closing	DTD	DTD	MTD	YTD
	Value	Chg	% Chg	% Chg	% Chg
Premier Market Index	5,882.28	5.0	0.1%	0.5%	(15.7%)
Main 50 Index	4,370.52	(24.5)	(0.6%)	4.5%	(12.4%)
Main Market Index	4,332.35	(13.5)	(0.3%)	3.5%	(11.8%)
All Share Market Index	5,361.14	(1.0)	(0.0%)	1.3%	(14.7%)
Market Cap (KWD Mn)	31,984.20	(5.1)	(0.0%)	2.1%	(12.0%)

Index Performance relative to Volume



Market Trading Data and Volatility

Trading Indicators	Today's Value	DTD Chg	DTD % Chg	Average Daily YTD 2020	Average Daily YTD 2019
Volume (Shrs Mn)	502.0	102.7	25.7%	185.1	88.6
Value Traded (KWD Mn)	58.1	(7.4)	(11.2%)	35.0	16.9
No. of Trades	14,978	(1,119)	(6.95%)	8,397	3,810

Today's Most Active by Value	Close (KWD)	Percent Change	Value (KWD)
A'ayan Leasing & Investment Co.	0.088	(2.3%)	7,170,662
Kuwait Finance House	0.630	0.2%	5,388,234
Gulf Bank	0.217	1.4%	4,713,484
Ahli United Bank - Bahrain	0.226	1.8%	4,590,113
Kuwait International Bank	0.186	2.2%	4,366,439

Boursa Kuwait - Premier Market

Tuesday, September 15, 2020

	Premier Market Stocks	Closing Price			Market Capitalization			Valuation Multiples				ROE	YTD-20 Price Return	YTD-20 Trading Indicators	
		KWD	DTD Chg. (KWD)	D-T-D Return	KWD Mn	Weight in Premier Index	Weight in Boursa Kuwait	P/E (X)	P/BV (X)	Yield	Beta			Volume (Mn Shrs)	Value (KWD Mn)
▼	National Bank of Kuwait	0.861	(0.004)	(0.5%)	5,898	25.2%	18.4%	19.4	1.92	3.8%	1.28	9.8%	(15.5%)	1,055.06	890.03
▲	Gulf Bank	0.217	0.003	1.4%	661	2.8%	2.1%	12.9	1.10	4.8%	1.13	8.6%	(28.4%)	1,139.73	255.80
▲	Kuwait International Bank	0.186	0.004	2.2%	211	0.9%	0.7%	27.6	0.81	3.2%	1.00	3.0%	(28.7%)	1,123.10	215.02
▲	Burgan Bank	0.203	0.002	1.0%	533	2.3%	1.7%	8.5	0.75	5.9%	1.05	8.8%	(33.2%)	390.21	85.71
▲	Kuwait Finance House	0.630	0.001	0.2%	4,835	20.6%	15.1%	24.1	2.59	2.9%	1.42	10.7%	(14.5%)	1,745.25	1,139.60
▼	Boubyan Bank	0.590	(0.002)	(0.3%)	1,924	8.2%	6.0%	37.8	3.88	1.3%	1.04	10.3%	4.0%	180.11	96.69
▲	Kuwait Projects Co. (Holding)	0.152	0.001	0.7%	304	1.3%	1.0%	5.1	1.40	6.5%	0.57	27.3%	(29.6%)	197.61	32.70
▲	Mabane Co.	0.657	0.013	2.0%	726	3.1%	2.3%	24.1	1.57	2.0%	1.09	6.5%	(23.0%)	193.05	126.13
▲	National Industries Group (Holding)	0.169	0.001	0.6%	241	1.0%	0.8%	NM	0.76	5.9%	1.42	NM	(29.9%)	554.49	100.91
▲	Boubyan Petrochemical Co.	0.540	0.012	2.3%	289	1.2%	0.9%	24.4	1.29	6.3%	0.73	5.3%	(19.2%)	70.29	39.70
▲	Qurain Petrochemicals Industries Co.	0.278	0.003	1.1%	306	1.3%	1.0%	11.8	0.72	5.4%	0.76	6.1%	(10.3%)	131.60	34.44
▼	Agility Public Warehousing Co.	0.625	(0.004)	(0.6%)	1,267	5.4%	4.0%	20.7	1.14	0.7%	1.47	5.5%	(12.1%)	484.84	316.51
▼	Mobile Telecommunications Co.	0.573	(0.004)	(0.7%)	2,479	10.6%	7.8%	12.2	2.02	5.8%	1.39	16.6%	(4.5%)	741.53	396.43
▲	Human Soft Holding Co.	2.795	0.007	0.3%	342	1.5%	1.1%	13.0	3.88	6.6%	0.47	29.9%	(7.2%)	41.37	114.09
▲	Ahli United Bank (B.S.C)	0.226	0.004	1.8%	2,201	9.4%	6.9%	11.2	1.85	8.0%	1.11	16.6%	(22.4%)	3,490.32	756.61
▼	Warba Bank	0.229	(0.009)	(3.8%)	361	1.5%	1.1%	NM	1.98	0.0%	0.98	NM	(12.6%)	603.75	129.75
▲	Mezzan Holding Co.	0.625	0.005	0.8%	195	0.8%	0.6%	30.2	1.77	2.4%	0.46	5.8%	25.0%	57.54	31.81
▲	Integrated Holding Co.	0.382	0.001	0.3%	84	0.4%	0.3%	31.8	1.38	7.9%	0.46	4.3%	(30.7%)	55.31	25.25
▲	Shamal Az-Zour Al-Oula Power and Water	0.337	0.003	0.9%	371	1.6%	1.2%	30.1	4.84	0.0%	NA	16.1%	NA	310.10	107.24
▼	Boursa Kuwait Securities Co.	1.030	(0.025)	(2.4%)	207	0.9%	0.6%	18.2	6.32	0.0%	NA	34.8%	NA	10.56	11.30
Subtotal- Premier Market Stocks		5,882.28	5.02	0.09%	23,433	100%	73%	18.6	1.85	3.85%		9.9%	-14.7%	12,575.84	4,905.71
Remaining of the Market					8,552		27%	(109.6)	0.83	4.17%		-0.8%		18,520.36	973.59

Source: Kamco Research

Boursa Kuwait Daily Bulletin

Tuesday, September 15, 2020

Company	Reuters Ticker	Valuation Multiples				Price (KWD)		MKT Cap (KWD Mn.)	52 Weeks High (KWD)	52 Weeks Low (KWD)	YTD-20 Return #	Daily Trading Data		YTD-20 Capital Turnover	ROE
		Trailing P/E (X)	Trailing P/BV (X)	Dividend Yield	Beta	Closing	DTD Change					Volume (Shrs.)	Value (KWD)		
▼ Senergy Holding Co.	SENE.KW	NM	0.36	0.00%	1.14	0.018	(0.002)	3.6	0.027	0.014	(17.8%)	444,014	8,419	28.0%	NM
= Independent Petroleum Group	IPGK.KW	14.1	0.98	5.62%	0.28	0.430	0.000	96.6	0.497	0.375	(10.8%)	0	0	0.3%	7.0%
= National Petroleum Services Co.	NAPS.KW	12.2	2.86	6.41%	0.22	1.060	0.000	106.0	1.389	0.903	(9.4%)	0	0	0.2%	23.4%
▼ The Energy House Co.	ENER.KW	NM	0.68	0.00%	0.94	0.021	(0.001)	15.8	0.036	0.014	(7.9%)	238,752	5,026	5.8%	NM
▼ Gulf Petroleum Investment	GPIK.KW	NM	0.15	0.00%	1.07	0.020	(0.001)	6.0	0.024	0.012	0.0%	28,028,407	585,884	547.5%	NM
= Burgan Co. for Drilling, Tdg. & Maint. *	ABAR.KW	14.3	0.29	0.00%	NA	0.078	0.000	18.9	0.098	0.060	(2.7%)	0	0	0.2%	2.0%
Oil & Gas		29.4	0.90	4.95%				246.8			(4.3%)	28,711,173	599,329		3.1%
= Kuwait Foundry Co.	KFDC.KW	36.7	0.86	6.30%	0.66	0.238	0.000	17.2	0.510	0.192	(29.0%)	0	0	2.4%	2.3%
▲ Boubyan Petrochemicals Co.*	BPCC.KW	24.4	1.29	6.30%	0.73	0.540	0.012	288.8	0.800	0.395	(19.2%)	1,065,949	577,666	13.1%	5.3%
= Al Kout for Industrial Projects Co.	ALKK.KW	27.8	2.84	6.50%	0.02	0.769	0.000	77.6	0.850	0.769	(9.5%)	0	0	0.0%	10.2%
▲ Qurain Petrochemical Industries Co. *	ALQK.KW	11.8	0.72	5.45%	0.76	0.278	0.003	305.6	0.341	0.163	(10.3%)	1,267,638	351,543	12.0%	6.1%
Basic Materials		16.9	0.99	5.95%				689.2			(14.7%)	2,333,587	929,209		5.9%
▲ Specialities Group Holding Co.	SPEC.KW	11.7	0.35	0.00%	0.39	0.063	0.002	10.4	0.078	0.050	(17.3%)	438,120	27,009	25.8%	3.0%
▲ Kuwait Cement Co.	KCEM.KW	NM	0.83	2.46%	0.46	0.198	0.006	145.2	0.271	0.144	(19.5%)	2,708,776	534,792	8.7%	NM
▼ Gulf Cable & Electrical Ind. Co.	CABL.KW	33.8	0.86	6.00%	0.91	0.667	(0.042)	140.0	0.742	0.390	36.7%	1,547,117	1,045,618	43.0%	2.6%
▼ Heavy Eng'g Ind. & Shipbuilding Co.	SHIP.KW	6.1	0.99	8.11%	0.60	0.370	(0.003)	66.7	0.419	0.298	(8.6%)	520,600	192,186	23.5%	16.2%
▲ Kuwait Portland Cement Co.	PCEM.KW	NM	1.27	5.13%	0.46	0.779	0.015	78.1	1.208	0.683	(20.7%)	125	96	5.7%	0.9%
= Shuaiba Industrial Co.	PAPE.KW	25.1	0.73	3.79%	0.12	0.130	0.000	13.1	0.180	0.122	(16.1%)	0	0	0.6%	2.9%
= Metal & Recycling Co.	MRCK.KW	NM	0.48	0.00%	0.21	0.041	0.000	4.8	0.070	0.020	(18.4%)	0	0	1.8%	NM
▲ ACICO Industries Co.	ACIC.KW	NM	0.43	4.85%	0.37	0.108	0.002	32.6	0.144	0.081	(18.8%)	42,346	4,462	5.8%	NM
= Hilal Cement Co.	HCCM.KW	NM	0.94	15.08%	0.12	0.100	0.000	10.1	0.126	0.063	(0.5%)	0	0	0.5%	NM
▲ National Industries Co.	NIBM.KW	NM	0.72	6.26%	0.15	0.154	0.004	57.4	0.173	0.143	(6.7%)	107,621	16,637	0.4%	NM
▼ Equipment Holding Co.	EQUI.KW	NM	0.39	0.00%	1.03	0.017	(0.001)	2.3	0.024	0.013	(22.4%)	488,400	8,327	24.5%	NM
= National Co. for Consumer Industries	NCCI.KW	56.5	0.56	0.00%	NA	0.051	0.000	4.6	0.100	0.010	(6.6%)	0	0	0.7%	1.0%
▼ Salbookh Trading Co.	SALB.KW	NM	0.53	0.00%	0.61	0.036	(0.000)	3.7	0.051	0.026	(28.9%)	229,010	7,843	25.4%	NM
▼ Agility (PWC Logistics)	AGLT.KW	20.7	1.14	0.66%	1.47	0.625	(0.004)	1,267.1	0.748	0.357	(12.1%)	1,020,955	639,473	23.9%	5.5%
= Educational Holding Group*	EDUK.KW	8.9	1.65	19.81%	0.45	0.300	0.000	73.6	0.475	0.228	(31.7%)	17,501	5,175	0.9%	18.6%
▲ National Cleaning Co.	CLEA.KW	69.2	0.39	8.71%	0.82	0.056	0.002	13.9	0.088	0.047	(19.3%)	10,005	536	22.6%	0.6%
▲ Kuwait & Gulf Link Transport Co.	KGLK.KW	NM	0.22	0.00%	0.76	0.046	0.001	13.2	0.078	0.042	(31.5%)	242,556	10,778	13.4%	NM
= Kuwait Co. For Process Plant Const. & Cont.	KCPK.KW	6.8	1.27	7.00%	0.47	0.314	0.000	34.6	0.338	0.175	30.3%	107,628	33,437	35.9%	18.7%
▲ Humansoft Holding Co.	HUMN.KW	13.0	3.88	6.59%	0.47	2.795	0.007	341.7	3.470	1.944	(7.2%)	429,705	1,187,131	33.8%	29.9%
= Gulf Franchising Co.	GFCI.KW	NM	1.24	0.00%	NA	0.050	0.000	2.0	0.148	0.001	(33.0%)	0	0	0.6%	NM
▲ National Shooting Co.	SHOOTING.KW	NM	0.28	0.00%	1.24	0.015	0.000	4.3	0.018	0.007	54.0%	1,873,415	28,374	87.3%	NM
▲ Combined Group Contracting Co.	CGCK.KW	NM	0.67	12.02%	0.59	0.158	0.001	27.1	0.251	0.138	(36.4%)	1,472,801	233,720	89.7%	NM
= United Projects Group	UPAC.KW	60.4	1.28	3.66%	NA	0.465	0.000	91.7	0.512	0.367	(9.2%)	0	0	0.0%	2.1%
= ALAFCO Aviation Lease & Finance Co.*	ALAF.KW	25.6	0.48	5.00%	0.85	0.160	0.000	152.3	0.278	0.138	(41.2%)	4,688,883	756,957	28.1%	1.9%
▼ Mubarrad Holding Co.	MBRD.KW	15.2	0.52	7.78%	0.95	0.063	(0.001)	10.3	0.089	0.049	(28.1%)	1,774,707	112,682	81.7%	3.4%
= KGL Logistics Co.	LOGK.KW	NM	0.20	0.00%	0.77	0.027	0.000	20.1	0.043	0.023	(26.5%)	0	0	26.6%	NM
▲ Integrated holding Co.	INTEGRATED.KW	31.8	1.38	7.85%	0.46	0.382	0.001	84.0	0.600	0.342	(30.7%)	444,819	168,443	25.1%	4.3%
= Sharjah Cement Co.	SCEM.KW	NM	0.22	0.00%	0.22	0.042	0.000	25.7	0.064	0.042	0.0%	0	0	0.0%	NM
▲ Gulf Cement Co.	GCEM.KW	NM	0.36	0.00%	0.20	0.033	0.001	27.3	0.062	0.029	(39.3%)	290,002	9,645	2.0%	NM
▼ Umm Al-Qaiwain General Investments Co.	QIC.KW	NM	0.56	6.46%	0.17	0.077	(0.004)	28.1	0.096	0.052	16.0%	500	39	0.0%	0.4%
= Fujairah Cement Industries Co.	FCEM.KW	NM	0.14	0.00%	0.48	0.033	0.000	11.9	0.052	0.029	(26.0%)	0	0	5.9%	NM
= Ras-Al-Khaimah for White Cement Co.	RKWC.KW	67.2	0.54	7.69%	0.11	0.065	0.000	32.5	0.080	0.053	0.0%	0	0	0.0%	0.8%
Industrials		52.4	0.92	3.66%				2,830.6			(14.0%)	18,455,592	5,023,359		1.7%

Boursa Kuwait Daily Bulletin

Tuesday, September 15, 2020

Company	Reuters Ticker	Valuation Multiples				Price (KWD)		MKT Cap (KWD Mn.)	52 Weeks High (KWD)	52 Weeks Low (KWD)	YTD-20 Return #	Daily Trading Data		YTD-20 Capital Turnover	ROE
		Trailing P/E (X)	Trailing P/BV (X)	Dividend Yield	Beta	Closing	DTD Change					Volume (Shrs.)	Value (KWD)		
▼ Palms Agro Production Co.	PAPK.KW	15.2	0.54	0.00%	0.23	0.060	(0.001)	3.1	0.062	0.025	48.0%	10,990	653	0.7%	3.6%
▲ Livestock Transport & Trading Co.	CATT.KW	23.9	0.95	0.00%	0.27	0.184	0.002	39.9	0.200	0.152	5.1%	101,610	18,656	12.1%	4.0%
= Danah Alsafat Foodstuff Co.	DANK.KW	NM	0.63	0.00%	0.74	0.012	0.000	1.3	0.029	0.010	(25.3%)	0	0	97.4%	NM
▲ Mezzan Holding Co.	MEZZ.KW	30.2	1.77	2.36%	0.46	0.625	0.005	194.6	0.665	0.428	25.0%	396,878	246,998	18.5%	5.8%
Consumer Goods		NM	1.49	1.92%		238.8					21.0%	509,478	266,307		NM
= Advanced Technology Co.	ATCK.KW	37.5	1.61	1.59%	0.00	0.627	0.000	94.1	0.900	0.580	(22.6%)	0	0	0.0%	4.3%
= Yiacco Medical Co.	YIAC.KW	NM	6.55	0.00%	NA	0.707	0.000	12.1	0.777	0.672	0.1%	0	0	0.0%	NM
= Al-Maidan Clinic For Oral Health Services Co.	MIDAN.KW	51.1	7.58	0.00%	0.00	1.220	0.000	305.0	1.220	1.220	0.0%	0	0	0.0%	14.8%
Health Care		49.2	4.09	0.36%		411.2					(6.3%)	0	0		8.3%
▲ Kuwait National Cinema Co.	KCIN.KW	30.8	0.98	4.62%	0.27	0.698	0.028	70.5	1.050	0.600	(33.4%)	15	10	1.0%	3.2%
= Kuwait Hotels Co.	KHOT.KW	NM	1.30	0.00%	NA	0.086	0.000	5.0	0.101	0.069	(14.0%)	0	0	0.1%	NM
▲ Sultan Center Food Products Co.	SCFK.KW	17.9	0.70	0.00%	0.53	0.056	0.002	32.4	0.060	0.036	7.7%	1,018,550	56,039	7.0%	3.9%
= Kuwait Cable Vision Co.	KWTV.KW	NM	0.52	0.00%	0.21	0.014	0.000	0.5	0.026	0.012	0.0%	0	0	0.0%	NM
▼ IFA Hotels & Resorts Co.*	IFAH.KW	NM	1.70	0.00%	0.23	0.023	(0.001)	14.6	0.062	0.021	(58.2%)	5,000	115	3.4%	NM
▼ Oula Fuel Marketing Co.	OULA.KW	31.8	0.71	4.48%	0.46	0.110	(0.001)	44.5	0.134	0.095	(13.4%)	198,733	21,703	4.2%	2.2%
▲ Kuwait Resorts Co.	MUNK.KW	16.5	0.38	0.00%	0.69	0.052	0.003	10.9	0.060	0.038	(10.6%)	2,251,150	115,771	42.2%	2.3%
▼ Jazeera Airways Co.	JAZK.KW	NM	4.38	6.10%	0.71	0.574	(0.008)	114.8	1.110	0.372	(47.8%)	464,129	265,099	23.5%	NM
= Soor Fuel Marketing Co.	SOOR.KW	20.6	0.68	4.50%	0.46	0.110	0.001	44.5	0.129	0.096	(12.0%)	124,631	13,603	4.7%	3.3%
= Future Kid Entertainment and R.E Co.	KIDK.KW	NM	0.53	15.47%	0.02	0.077	0.000	8.9	0.110	0.069	(13.3%)	0	0	0.6%	NM
= Al Rai Media Group Co.	ALRA.KW	NM	0.86	0.00%	0.26	0.037	0.000	8.6	0.045	0.031	(2.4%)	0	0	0.3%	NM
▼ Jiyad Holding Co	JIYAD.KW	11.4	0.36	0.00%	0.63	0.040	(0.001)	14.1	0.047	0.029	3.6%	770,401	30,876	16.2%	3.2%
▼ Al Eid Food Co.	ALEID.KW	5.1	0.40	0.00%	NA	0.074	(0.001)	7.4	0.096	0.046	(7.0%)	40,760	2,957	6.3%	7.8%
Consumer Services		NM	0.94	4.15%		376.8					(31.7%)	4,873,369	506,172		NM
▼ Zain	ZAIN.KW	12.2	2.02	5.76%	1.39	0.573	(0.004)	2,479.4	0.604	0.407	(4.5%)	2,679,767	1,537,337	17.1%	16.6%
▼ National Mobile Telecom Co.	OORE.KW	20.9	0.56	8.29%	0.46	0.600	(0.002)	302.4	0.835	0.550	(27.5%)	37,508	22,515	3.1%	2.7%
▼ AAN digital services Co.	AAN.KW	NM	0.37	0.00%	1.33	0.013	(0.001)	10.9	0.021	0.009	(7.4%)	9,993,228	127,820	158.1%	NM
▼ Kuwait Telecommunication Co.	STC.KW	10.7	2.04	5.92%	0.58	0.844	(0.011)	421.5	0.870	0.680	7.1%	17,644	15,004	2.2%	19.2%
= Hayat Communications Co.	HAYK.KW	7.9	0.56	0.00%	1.22	0.065	0.000	6.0	0.098	0.030	(13.3%)	1,700	111	6.4%	7.0%
Telecommunications		12.5	1.60	5.99%		3,220.2					(5.8%)	12,729,847	1,702,786		12.8%
▼ National Bank of Kuwait	NBKK.KW	19.4	1.92	3.82%	1.28	0.861	(0.004)	5,898.0	1.062	0.654	(15.5%)	2,550,193	2,198,863	15.4%	9.8%
▲ Gulf Bank	GBKK.KW	12.9	1.10	4.82%	1.13	0.217	0.003	661.4	0.317	0.180	(28.4%)	21,762,918	4,713,484	37.4%	8.6%
= Commercial Bank of Kuwait	CBKK.KW	NM	1.47	3.98%	0.39	0.500	0.000	996.0	0.555	0.465	(5.5%)	0	0	1.4%	NM
▲ Ahli Bank of Kuwait	ABKK.KW	NM	0.53	3.77%	0.62	0.184	0.004	297.9	0.310	0.156	(28.1%)	1,947,495	357,848	6.7%	0.3%
▲ Ahli United Bank - Kuwait	BKME.KW	14.7	1.43	4.54%	0.86	0.285	0.001	617.3	0.330	0.225	(12.5%)	326,865	92,719	5.8%	9.7%
▲ Kuwait International Bank	KIBK.KW	27.6	0.81	3.24%	1.00	0.186	0.004	210.7	0.271	0.162	(28.7%)	23,414,194	4,366,439	99.1%	3.0%
▲ Burgan Bank	BURG.KW	8.5	0.75	5.90%	1.05	0.203	0.002	532.9	0.332	0.175	(33.2%)	1,551,420	314,777	14.9%	8.8%
▲ Kuwait Finance House	KFH.KW	24.1	2.59	2.86%	1.42	0.630	0.001	4,834.7	0.761	0.473	(14.5%)	8,569,362	5,388,234	22.7%	10.7%
▼ Boubayan Bank	BOUK.KW	37.8	3.88	1.35%	1.04	0.590	(0.002)	1,923.6	0.638	0.380	4.0%	694,164	409,635	5.5%	10.3%
▼ Warba Bank	WARB.KW	NM	1.98	0.00%	0.98	0.229	(0.009)	360.7	0.279	0.164	(12.6%)	16,795,530	3,981,627	38.3%	NM
▲ Ahli United Bank - Bahrain	AUBK.KW	11.2	1.85	7.97%	1.11	0.226	0.004	2,200.7	0.311	0.160	(22.4%)	20,377,785	4,590,113	35.8%	16.6%
Banks		20.7	1.85	3.84%		18,601.4					(15.4%)	97,989,926	26,413,739		9.0%

Boursa Kuwait Daily Bulletin

Tuesday, September 15, 2020

Company	Reuters Ticker	Valuation Multiples				Price (KWD)		MKT Cap (KWD Mn.)	52 Weeks High (KWD)	52 Weeks Low (KWD)	YTD-20 Return #	Daily Trading Data		YTD-20 Capital Turnover	ROE
		Trailing P/E (X)	Trailing P/BV (X)	Dividend Yield	Beta	Closing	DTD Change					Volume (Shrs.)	Value (KWD)		
= Kuwait Insurance Co.	KINS.KW	6.4	0.82	7.72%	NA	0.370	0.000	71.8	0.387	0.300	12.1%	0	0	1.2%	12.8%
= Gulf Insurance Group	GINS.KW	7.5	1.02	6.04%	0.08	0.602	0.000	112.6	0.680	0.550	(8.8%)	0	0	0.1%	13.6%
= Ahleiah Insurance Co.	AINS.KW	7.9	0.80	5.71%	0.12	0.410	0.000	86.1	0.424	0.367	0.6%	0	0	0.8%	10.1%
▼ Warba Insurance Co.	WINS.KW	12.3	0.39	9.15%	0.36	0.075	(0.004)	13.3	0.094	0.051	24.0%	30,000	2,250	1.9%	3.1%
= Kuwait Reinsurance Co.	KWRE.KW	8.7	0.79	2.18%	0.02	0.211	0.000	43.0	0.211	0.126	52.9%	330	70	0.1%	9.1%
= First Takaful Insurance Co.	FTIK.KW	NM	0.47	0.00%	0.33	0.040	0.000	4.2	0.056	0.031	4.5%	0	0	2.6%	NM
▼ Wethaq Takaful Insurance Co.	WETH.KW	NM	0.21	0.00%	0.38	0.023	(0.001)	2.5	0.035	0.018	(10.0%)	403,300	9,212	14.1%	NM
= Bahrain Kuwait Insurance Co.	BKIK.KW	12.0	0.94	7.50%	0.02	0.200	0.000	28.6	0.220	0.190	0.0%	0	0	0.0%	7.8%
Insurance		9.2	0.81	5.95%				362.1			4.3%	433,630	11,531		8.8%
▼ Sokouk Holding Co.	SHCK.KW	NM	0.39	0.00%	1.16	0.026	(0.000)	15.6	0.040	0.022	(25.3%)	2,740,492	73,046	29.9%	NM
▲ Kuwait Real Estate Co.	KREK.KW	26.5	0.75	0.00%	0.99	0.101	0.002	95.7	0.115	0.070	(3.8%)	7,918,718	793,416	19.4%	2.8%
▼ United Real Estate Co.	UREK.KW	NM	0.32	0.00%	0.38	0.050	(0.003)	58.9	0.063	0.045	(19.1%)	150	7	0.6%	NM
= National Real Estate Co.	NREK.KW	24.2	0.39	0.00%	1.15	0.073	0.000	104.4	0.090	0.058	(16.1%)	1,118,049	81,642	16.3%	1.6%
▼ Salhia Real Estate Co.	SREK.KW	6.0	1.21	6.13%	0.34	0.393	(0.004)	201.5	0.460	0.324	(5.8%)	340,225	133,053	5.3%	20.2%
= Tamdeen Real Estate Co.	TAMK.KW	NM	0.76	1.96%	0.10	0.248	0.000	107.1	0.343	0.241	(22.7%)	0	0	0.5%	NM
= Ajial Real Estate Entertainment Co.	AREC.KW	19.8	0.21	0.00%	0.50	0.139	0.000	27.0	0.213	0.115	(19.4%)	23,000	3,197	3.7%	1.1%
▲ Al Massaleh Real Estate Co.	MREC.KW	NM	0.41	0.00%	0.24	0.036	0.001	8.5	0.040	0.026	(2.7%)	8,000	280	1.5%	NM
= Arab Real Estate Co.	ARAB.KW	NM	0.26	0.00%	1.18	0.026	0.000	13.3	0.033	0.020	(11.9%)	679,566	17,431	22.9%	NM
▲ AL-Enma'a Real Estate Co.*	ENMA.KW	20.5	0.46	0.00%	0.64	0.046	0.000	20.9	0.079	0.037	(25.8%)	4,344,211	203,676	25.5%	2.3%
▲ Mabanee Co.	MABK.KW	24.1	1.57	2.00%	1.09	0.657	0.013	726.0	0.878	0.434	(23.0%)	1,419,239	926,422	17.5%	6.5%
▼ Injazzat Real Estate Development Co.	INJA.KW	NM	0.50	8.91%	0.20	0.077	(0.001)	26.4	0.091	0.061	(4.4%)	10,001	783	1.1%	NM
▼ Investors Holding Group Co.	INVK.KW	NM	0.73	0.00%	1.16	0.015	(0.007)	9.2	0.032	0.007	83.8%	143,917,994	2,816,402	259.6%	NM
▼ The Commercial Real Estate Co.	TIJK.KW	20.5	0.67	4.54%	0.53	0.108	(0.001)	191.2	0.109	0.083	15.4%	3,287,524	353,096	8.0%	3.3%
▼ Sanam Real Estate Co.	SANK.KW	NM	0.38	0.00%	0.38	0.029	(0.002)	3.5	0.043	0.027	(28.8%)	50,000	1,425	2.5%	NM
▼ A'ayan Real Estate Co.	AYRE.KW	NM	0.35	8.31%	0.57	0.059	(0.001)	24.6	0.080	0.048	(18.9%)	349,432	20,991	3.4%	NM
▲ Aqar Real Estate Investment Co.	AQAR.KW	6.3	0.53	6.93%	NA	0.062	0.002	15.3	0.089	0.058	(18.4%)	20,100	1,250	1.7%	8.5%
▲ Kuwait Real Estate Holding Co.	ALAQ.KW	NM	0.62	0.00%	0.53	0.026	0.002	5.0	0.034	0.022	(9.4%)	223,486	5,601	8.2%	NM
▲ MAZAYA Holding Co.	MAZA.KW	NM	0.51	0.00%	0.99	0.055	0.000	37.6	0.067	0.047	(7.6%)	990,024	53,855	15.4%	NM
▲ Tijara Real Estate & Investment Co.	TJUA.KW	14.5	0.38	4.94%	0.30	0.041	0.001	15.0	0.055	0.034	(19.0%)	2	0	0.2%	2.6%
▼ Al TAMEER Real Estate Investment Co.	AMAR.KW	NM	0.33	0.00%	0.94	0.020	(0.001)	4.8	0.034	0.013	(24.9%)	2,255,109	45,219	87.1%	NM
= Arkan Al-Kuwait Real Estate Co. *	ARKK.KW	9.2	0.64	9.36%	0.22	0.086	0.000	21.5	0.100	0.076	(3.8%)	0	0	9.0%	6.9%
= Al-Argan International Real Estate Co.	ARGK.KW	NM	0.27	5.80%	0.42	0.083	0.000	22.0	0.141	0.060	(20.9%)	0	0	0.4%	NM
= Abyaar Real Estate Development Co.	ABYR.KW	NM	0.21	0.00%	1.21	0.008	0.000	8.3	0.014	0.005	(3.8%)	2,547,974	18,734	59.7%	NM
▼ Munshaat Real Estate Projects Co.	MUNS.KW	NM	0.50	0.00%	0.66	0.065	(0.000)	20.8	0.085	0.045	(12.7%)	301,000	18,665	6.3%	NM
▼ First Dubai For Real Estate Development	FIRST.KW	NM	0.54	0.00%	1.44	0.040	(0.000)	40.3	0.055	0.027	13.2%	2,367,223	95,086	28.8%	0.6%
▼ Kuwait Business Town Real Estate Co.	KBTK.KW	10.4	0.23	0.00%	1.05	0.026	(0.000)	16.1	0.046	0.022	(41.6%)	1,108,450	28,600	36.1%	2.2%
= Real Estate Asset Management Co.	REAM.KW	NM	1.48	0.00%	0.08	0.204	0.000	22.4	0.204	0.060	132.1%	0	0	0.1%	NM
▼ MENA Real Estate Co. *	MENK.KW	NM	0.20	0.00%	0.98	0.028	(0.001)	3.8	0.043	0.021	(32.4%)	635,137	17,755	91.9%	NM
= Al Mudon International Real Estate Co.	ALMK.KW	NM	0.12	0.00%	0.86	0.016	0.000	1.6	0.029	0.015	(35.1%)	0	0	23.7%	NM
= Real Estate Trade Centers Co.	MARA.KW	16.9	0.17	0.00%	0.33	0.029	0.000	4.1	0.050	0.018	26.3%	12,500	366	28.3%	1.0%
▲ Kuwait Remal Real Estate Co.	REMA.KW	NM	0.31	0.00%	0.85	0.020	0.000	6.1	0.027	0.013	(18.0%)	243,009	4,730	18.5%	NM
▲ Mashaer Holding Co.	MASHAER.KW	NM	0.54	8.19%	0.53	0.061	0.001	10.9	0.086	0.048	(21.4%)	67,918	4,086	32.0%	NM
= Effect Real Estate Co.	EFFECT.KW	NM	0.29	0.00%	0.44	0.021	0.000	1.7	N/A	N/A	0.0%	0	0	0.0%	NM
= Ajwan Gulf Real Estate Co.	AJWN.KW	NM	0.19	0.00%	0.60	0.011	0.000	2.2	0.016	0.009	(28.7%)	0	0	116.7%	NM
▼ Al Masaken Intl. Real Estate Dev. Co.	MASKN.KW	NM	0.31	0.00%	0.14	0.027	(0.001)	2.7	0.074	0.027	(39.8%)	50,000	1,315	0.7%	0.4%
= Dalqan Real Estate Co.	DALQ.KW	62.7	2.37	0.00%	NA	0.350	0.000	15.8	0.385	0.333	0.0%	0	0	0.0%	3.8%
▼ Dar Al Thuraya Real Estate Co.	THURY.KW	NM	1.08	0.00%	0.02	0.114	(0.011)	16.7	0.190	0.040	62.6%	11,825	1,358	2.1%	0.2%
▼ Osos Holding Group Co.	OSOS.KW	NM	0.84	7.25%	0.25	0.092	(0.003)	9.7	0.118	0.084	(8.0%)	8,010	725	7.0%	NM
▲ KFH Capital REIT	BAITAKREIT.KW	NA	NA	0.00%	NA	1.035	0.006	24.4	1.131	0.978	NA	5,010	5,161	4.2%	NA
Real Estate		NM	0.72	2.49%				1,962.6			(13.2%)	177,053,378	5,727,374		NM

Boursa Kuwait Daily Bulletin

Tuesday, September 15, 2020

Company	Reuters Ticker	Valuation Multiples				Price (KWD)		MKT Cap (KWD Mn.)	52 Weeks High (KWD)	52 Weeks Low (KWD)	YTD-20 Return #	Daily Trading Data		YTD-20 Capital Turnover	ROE
		Trailing P/E (X)	Trailing P/BV (X)	Dividend Yield	Beta	Closing	DTD Change					Volume (Shrs.)	Value (KWD)		
▼ Kuwait Investment Co.	KINV.KW	NM	0.69	12.53%	0.71	0.119	(0.001)	65.6	0.172	0.095	(20.7%)	950,665	112,656	24.3%	NM
= Commercial Facilities Co.	FACI.KW	NM	0.70	9.21%	0.52	0.185	0.000	99.3	0.235	0.179	(14.7%)	0	0	4.4%	NM
= Int'l Financial Advisors Co.	IFIN.KW	NM	0.99	0.00%	1.32	0.031	0.000	8.2	0.060	0.027	(42.3%)	0	0	32.0%	NM
▼ National Investment Co.	NINV.KW	NM	0.73	6.16%	1.24	0.133	(0.003)	116.5	0.158	0.080	(3.6%)	4,972,220	660,243	36.5%	NM
▲ Kuwait Projects Co.(Holding)	KPRO.KW	5.1	1.40	6.47%	0.57	0.152	0.001	304.0	0.230	0.147	(29.6%)	3,955,366	600,166	9.9%	27.3%
▼ Coast Invest. & Development Co.	COAS.KW	NM	0.43	0.00%	1.33	0.035	(0.000)	21.9	0.045	0.026	(12.5%)	83,214	2,912	18.6%	NM
▲ The Securities House Co.	SECH.KW	NM	0.50	0.00%	1.14	0.044	0.001	24.4	0.063	0.027	(3.3%)	3,212,057	143,625	60.4%	NM
▼ Arzan Financial Group For Fin. & Invest.	ARZA.KW	NM	0.49	0.00%	1.03	0.054	(0.001)	43.5	0.064	0.022	128.7%	14,637,187	790,638	204.6%	NM
▲ Kuwait Financial Centre	MARKZ.KW	NM	0.47	6.18%	0.77	0.081	0.001	38.9	0.121	0.070	(23.7%)	525,166	42,255	25.2%	NM
▼ Kuwait & M.E. Financial Inv. Co.	KMEF.KW	4.0	1.30	0.00%	0.61	0.115	(0.004)	30.3	0.138	0.063	28.5%	124,852	14,295	20.0%	32.2%
▲ First Investment Co.	OLAK.KW	NM	0.44	0.00%	1.02	0.030	0.000	19.5	0.045	0.022	(12.8%)	1,347,233	40,028	175.0%	NM
▼ Al-Mal Investment Co.	MALK.KW	NM	0.39	0.00%	1.20	0.009	(0.000)	2.9	0.016	0.008	(7.1%)	3,890,903	36,135	90.5%	NM
▼ Gulf Investment House	GIHK.KW	NM	1.77	0.00%	1.00	0.098	(0.001)	63.5	0.100	0.038	51.9%	852,650	82,417	20.5%	NM
▼ A'ayan Leasing & Investment Co.	AAYA.KW	NM	1.10	0.00%	1.24	0.088	(0.002)	71.2	0.102	0.032	87.4%	78,590,314	7,170,662	150.6%	NM
▼ Bayan Investment Co.	BAYK.KW	NM	0.51	0.00%	0.85	0.045	(0.002)	17.6	0.053	0.031	17.3%	112,000	5,006	5.8%	NM
▼ Osoul Investment Co.	OSUL.KW	NM	0.77	13.32%	0.44	0.082	(0.000)	12.9	0.121	0.070	9.3%	74,500	6,042	25.8%	NM
▼ Kuwait Finance & Investment Co.	KFSK.KW	NM	0.38	0.00%	0.30	0.043	(0.002)	14.0	0.058	0.038	(12.5%)	338,800	14,808	9.4%	NM
▼ Kamco Investment Co.	KAMC.KW	NM	0.50	7.03%	0.38	0.071	(0.001)	24.3	0.111	0.060	(21.0%)	1,088,787	78,140	13.9%	NM
▲ National International Holding Co.	NIHK.KW	7.7	0.37	6.98%	0.67	0.063	0.001	14.3	0.081	0.049	(14.1%)	314,714	19,276	4.1%	4.8%
▲ UniCap Investment and Finance	UNICAP.KW	NM	0.56	0.00%	0.65	0.043	0.002	10.2	0.057	0.035	(22.7%)	622,920	25,897	10.2%	NM
▼ Al Madar Finance & Investment Co.	MADR.KW	18.6	0.91	5.28%	0.34	0.092	(0.005)	19.6	0.148	0.062	(1.2%)	3,131,137	289,098	24.8%	4.9%
= Al-Deera Holding	DEER.KW	NM	1.92	0.00%	0.83	0.016	0.000	3.2	0.022	0.011	(20.0%)	0	0	6.1%	NM
▼ Al Salam Group Holding Co.	SAGH.KW	30.9	0.23	0.00%	1.27	0.027	(0.002)	7.3	0.033	0.018	(7.8%)	13,563,518	379,787	237.1%	0.8%
▼ Ektitab Holding Co.	EKTT.KW	NM	0.38	0.00%	1.01	0.016	(0.000)	5.0	0.017	0.010	5.3%	1,061,017	16,472	46.5%	NM
▼ Al Madina For Finance & Investment Co.	MADI.KW	NM	0.48	0.00%	1.22	0.014	(0.000)	5.6	0.019	0.009	(8.0%)	2,068,852	28,805	159.1%	NM
▼ NOOR Financial Investment Co.	NOOR.KW	8.1	1.24	3.42%	1.24	0.175	(0.001)	72.3	0.184	0.076	47.1%	543,376	94,067	53.2%	15.4%
= Tamdeen Investment Co.	TAMI.KW	NM	0.57	3.72%	0.33	0.321	0.000	110.8	0.400	0.199	(7.0%)	0	0	0.3%	NM
▼ Kuwait Syrian Holding Co.	KSHC.KW	NM	0.23	0.00%	0.73	0.025	(0.000)	4.5	0.043	0.022	(19.7%)	154,990	3,922	25.2%	NM
▼ Asiya Capital Investment Co.	ASIYA.KW	NM	0.38	0.00%	0.52	0.034	(0.000)	27.1	0.041	0.029	(17.1%)	639,080	20,767	1.6%	NM
= Gulf North Africa Holding Co.	GNAH.KW	NM	0.75	0.00%	1.10	0.056	0.000	8.4	0.062	0.052	(9.4%)	4,207	236	4.0%	NM
= Amwal International Investment Co.	AMWA.KW	NM	0.65	0.00%	0.39	0.034	0.000	6.2	0.053	0.030	14.3%	0	0	0.0%	NM
▼ Alimtiar Investment Group	ALIMK.KW	NM	0.53	8.27%	0.95	0.093	(0.002)	105.1	0.137	0.071	(26.4%)	3,419,246	317,821	38.4%	NM
= Tamkeen Holding Co.	TAMKE.KW	NM	0.05	0.00%	NA	0.005	0.000	0.3	N/A	N/A	0.0%	0	0	0.0%	NM
▲ Manazel Holding Co.	MANK.KW	9.7	0.73	0.00%	1.38	0.034	0.000	14.5	0.048	0.021	(14.3%)	2,236,087	74,952	43.8%	7.5%
▲ National Industries Group	NIND.KW	NM	0.76	5.92%	1.42	0.169	0.001	241.3	0.247	0.121	(29.9%)	3,393,048	571,987	38.8%	NM
= Warba Capital Holding Co.	WARBACAP.KW	NM	0.55	0.00%	0.70	0.047	0.000	4.7	0.070	0.045	(27.0%)	0	0	8.7%	NM
= Arabi Holding Group Co.	AGHC.KW	NM	1.23	0.00%	0.15	0.198	0.000	34.2	0.337	0.079	(27.7%)	0	0	3.1%	NM
▼ Privatization Holding Co.	KPPC.KW	NM	0.32	0.00%	0.79	0.041	(0.002)	25.0	0.059	0.037	(17.2%)	465,425	18,967	5.7%	NM
▼ Credit Rating & Collection Co.	TAHS.KW	NM	0.95	0.00%	NA	0.030	(0.002)	4.9	0.035	0.019	47.5%	100	3	0.2%	NM
= Egypt Kuwait Holding Co.	ECHK.KW	12.1	2.53	0.00%	0.16	0.370	0.000	379.0	0.500	0.318	(17.8%)	0	0	0.0%	20.9%
▼ GFH Financial Group	GFH.KW	19.0	1.01	7.69%	0.87	0.052	(0.000)	266.6	0.074	0.042	(24.2%)	61,363	3,138	1.6%	5.3%
▼ Inovest	INOV.KW	8.6	0.46	7.15%	0.71	0.067	(0.003)	20.0	0.072	0.044	4.4%	573,740	38,931	5.8%	5.4%
= Al Bareeq Holding	BAREEQ.KW	33.8	1.44	0.00%	0.03	0.088	0.000	66.0	0.110	0.088	(12.5%)	0	0	1.7%	4.3%
= Amar For Finance and Leasing Co.	AMARF.KW	NM	0.63	0.00%	0.07	0.053	0.000	10.6	0.064	0.037	39.5%	0	0	11.0%	NM
▼ Al-Manar Financing & Leasing Co.	ALMANAR.KW	NM	0.45	0.00%	NA	0.047	(0.002)	14.4	0.060	0.037	(10.0%)	184,500	8,650	6.8%	NM
▼ Boursa Kuwait Securities Co	BOURSA.KW	18.2	6.32	0.00%	NA	1.030	(0.025)	206.8	1.210	0.996	NA	1,852,285	1,928,437	5.3%	34.8%
Financial Services		NM	0.90	3.89%				2,666.5			(3.7%)	149,045,519	13,641,242		NM

Boursa Kuwait Daily Bulletin

Tuesday, September 15, 2020

Company	Reuters Ticker	Valuation Multiples				Price (KWD)		MKT Cap (KWD Mn.)	52 Weeks High (KWD)	52 Weeks Low (KWD)	YTD-20 Return #	Daily Trading Data		YTD-20 Capital Turnover	ROE
		Trailing P/E (X)	Trailing P/BV (X)	Dividend Yield	Beta	Closing	DTD Change					Volume (Shrs.)	Value (KWD)		
▼ Automated Systems Co.	ASCK.KW	NM	0.59	5.56%	0.13	0.072	(0.001)	7.2	0.086	0.051	1.7%	96,000	6,458	1.9%	NM
Technology		NM	0.59	5.56%				7.2			1.7%	96,000	6,458		NM
▲ Shamal Az-Zour Al-Oula Power and Water Co.	AZNOULA.KW	30.1	4.84	0.00%	NA	0.337	0.003	370.7	0.500	0.297	N/A	9,742,302	3,269,425	28.2%	16.1%
Utilities		30.1	4.84	0.00%				370.7			N/A	9,742,302	3,269,425		16.1%
Boursa Kuwait		27.1	1.39	3.94%				31,984.2			(12.00%)	501,973,801	58,096,930		5.1%

Year-to-Date 2020 Top Movers & Most Active Stocks

YTD Top % Gainers	Close (KWD)	Percent Change
Real Estate Asset Management Co.	0.204	132.1%
Arzan Financial Group For Fin. & Invest.	0.054	128.7%
A'ayan Leasing & Investment Co.	0.088	87.4%
Investors Holding Group Co.	0.015	83.8%
Dar Al Thuraya Real Estate Co.	0.114	62.6%
YTD Most Active by Volume	Close (KWD)	Volume (Shrs.)
Ahli United Bank - Bahrain	0.226	3,490,323,150
Kuwait Finance House	0.630	1,745,253,063
Arzan Financial Group For Fin. & Invest.	0.054	1,642,398,691
Gulf Petroleum Investment	0.020	1,622,755,075
Investors Holding Group Co.	0.015	1,617,155,245

YTD Top % Losers	Close (KWD)	Percent Change
IFA Hotels & Resorts Co.	0.023	(58.2%)
Jazeera Airways Co.	0.574	(47.8%)
Int'l Financial Advisors Co.	0.031	(42.3%)
Kuwait Business Town Real Estate Co.	0.026	(41.6%)
ALAFCO Aviation Lease & Finance Co.	0.160	(41.2%)
YTD Most Active by Value	Close (KWD)	Value (KWD)
Kuwait Finance House	0.630	1,139,600,758
National Bank of Kuwait	0.861	890,026,465
Ahli United Bank - Bahrain	0.226	756,613,077
Zain	0.573	396,434,305
Agility (PWC Logistics)	0.625	316,514,247

* Different Fiscal Year Company

Disclaimer & Important Disclosures

Kamco Invest is authorized and fully regulated by the Capital Markets Authority ("CMA, Kuwait") and partially regulated by the Central Bank of Kuwait ("CBK").

This document is provided for informational purposes only. Nothing contained in this document constitutes investment, an offer to invest, legal, tax or other advice or guidance and should be disregarded when considering or making investment decisions. In preparing this document, Kamco Invest did not take into account the investment objectives, financial situation and particular needs of any particular person. Accordingly, before acting on this document, investors should independently evaluate the investments and strategies referred to herein and make their own determination of whether it is appropriate in light of their own financial circumstances and objectives. The entire content of this document is subject to copyright with all rights reserved. This research and the information contained herein may not be reproduced, distributed or transmitted in Kuwait or in any other jurisdiction to any other person or incorporated in any way into another document or other material without our prior written consent.

Analyst Certification

Each of the analysts identified in this report, if any and where applicable, certifies, with respect to the sector, companies or securities that the individual analyses, that (1) the views expressed in this report reflect his or her personal views about all of the subject companies and securities and (2) no part of his or her compensation was, is or will be directly or indirectly dependent on the specific recommendations or views expressed in this report.

Kamco Invest Ratings

Kamco Invest research is based on the analysis of regional and country economics, industries and company fundamentals. Kamco Invest company research reflects a long-term (12-month) target price for a company or stock. The ratings bands are:

* **Outperform:** Target Price represents expected returns >= 10% in the next 12 months

* **Neutral:** Target Price represents expected returns between -10% and +10% in the next 12 months

* **Underperform:** Target Price represents an expected return of <-10% in the next 12 months

In certain circumstances, ratings may differ from those implied by a fair value target using the criteria above. Kamco Invest policy is to maintain up-to-date fair value targets on the companies under its coverage, reflecting any material changes to the analyst's outlook on a company. Share price volatility may cause a stock to move outside the rating range implied by Kamco Invest's fair value target. Analysts may not necessarily change their ratings if this happens, but are expected to disclose the rationale behind their view to Kamco Invest clients.

Any terms and conditions proposed by you which are in addition to or which conflict with this Disclaimer are expressly rejected by Kamco Invest and shall be of no force or effect. The information contained in this document is based on current trade, statistical and other public information we consider reliable. We do not represent or warrant that such information is fair, accurate or complete and it should not be relied upon as such. Kamco Invest has no obligation to update, modify or amend this document or to otherwise notify a recipient thereof in the event that any opinion, forecast or estimate set forth herein, changes or subsequently becomes inaccurate. The publication is provided for informational uses only and is not intended for trading purposes. The information on publications does not give rise to any legally binding obligation and/or agreement, including without limitation any obligation to update such information. You shall be responsible for conducting your own investigation and analysis of the information contained or referred to in this document and of evaluating the merits and risks involved in the securities forming the subject matter of this or other such document. Moreover, the provision of certain data/information in the publication may be subject to the terms and conditions of other agreements to which Kamco Invest is a party.

Nothing in this document should be construed as a solicitation or offer, or recommendation, to acquire or dispose of any investment or to engage in any other transaction, or to provide any investment advice or service. This document is directed at Professional Clients and not Retail Clients within the meaning of CMA rules. Any other persons in receipt of this document must not rely upon or otherwise act upon it. Entities and individuals

*Kamco Investment Company (DIFC) Limited ("Kamco Invest DIFC"), Office 205, Level 2, Gate Village 1, Dubai International Financial Centre, a wholly owned subsidiary of Kamco Investment Company KSC (Public), is regulated by the Dubai Financial Services Authority (DFSA). Kamco Invest DIFC may only undertake the financial services activities that fall within the scope of its existing DFSA licence. The information in this document may be distributed by Kamco Invest DIFC on behalf of Kamco Investment Company KSC (Public). This document is intended for Professional Clients or Market Counterparties only as defined by the DFSA, and no other person should act upon it.

This document may not be distributed in Saudi Arabia except to such persons as are permitted under the Offers of Securities Regulations issued by the Capital Market Authority. The Capital Market Authority does not make any representation as to the accuracy or completeness of this document, and expressly disclaims any liability whatsoever for any loss arising from, or incurred in reliance upon, any part of this document. The recipients of this document hereby should conduct their own due diligence on the accuracy of the information relating to the contents of this document. If you do not understand the contents of this document you should consult an authorized financial advisor.

Risk Warnings

Any prices, valuations or forecasts are indicative and are not intended to predict actual results, which may differ substantially from those reflected. The value of an investment may go up as well as down. The value of and income from any investment may fluctuate from day to day as a result of changes in relevant economic markets (including, without limitation, foreseeable or unforeseeable changes in interest rates, foreign exchange rates, default rates, prepayment rates, political or financial conditions, etc.).

Past performance is not indicative of future results. Any opinions, estimates, valuations or projections (target prices and ratings in particular) are inherently imprecise and a matter of judgment. They are statements of opinion and not of fact, based on current expectations, estimates and projections, and rely on beliefs and assumptions. Actual outcomes and returns may differ materially from what is expressed or forecasted. There are no guarantees of future performance. Certain transactions, including those involving futures, options, and other derivatives, give rise to substantial risk and are not suitable for all investors. This document does not propose to identify or to suggest all of the risks (direct or indirect) which may be associated with the investments and strategies referred to herein.

Conflict of Interest

Kamco Invest and its affiliates provide full investment banking services, and they and their directors, officers and employees, may take positions which conflict with the views expressed in this document. Salespeople, traders, and other professionals of Kamco Invest may provide oral or written market commentary or trading strategies to our clients and our proprietary trading desks that reflect opinions that are contrary to the opinions expressed in this document. Our asset management area, our proprietary trading desks and investing businesses may make investment decisions that are inconsistent with the recommendations or views expressed in this document. Kamco Invest may have or seek transactions, including those involving futures, options, and other derivatives, give rise to substantial risk and are not suitable for all investors. This document does not propose to identify or to suggest all of the risks (direct or indirect) which may be associated with the investments and strategies referred to herein.

No Liability & Warranty

Kamco Invest makes neither implied nor expressed representations or warranties and, to the fullest extent permitted by applicable law, we hereby expressly disclaim any and all express, implied and statutory representations and warranties of any kind, including, without limitation, any warranty as to accuracy, timeliness, completeness, and fitness for a particular purpose and/or non-infringement. Kamco Invest will accept no liability in any event including (without limitation) your reliance on the information contained in this document, any negligence for any damages or loss of any kind, including (without limitation) direct, indirect, incidental, special or consequential damages, expenses or losses arising out of, or in connection with your use or inability to use this document, or in connection with any error, omission, defect, computer virus or system failure, or