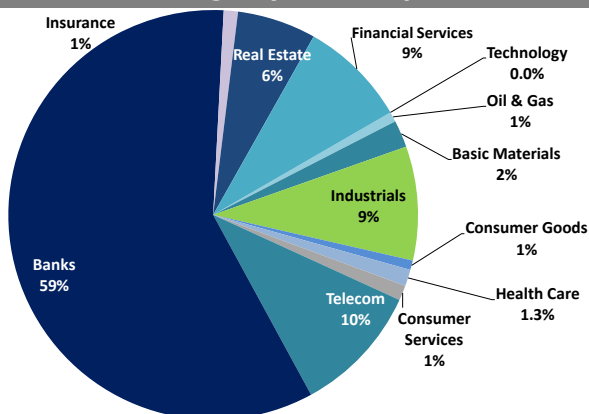


Boursa Kuwait Daily Report

September 14, 2020

Sector Weight by Market Cap



Market Capitalization - Sector Returns

	Market Cap. (KWD Mn)	DTD	DTD % Chg	MTD % Chg	YTD % Chg
Boursa Kuwait	31,989.3	▲	0.3%	2.1%	(12.0%)
Oil & Gas	248.2	▼	(0.3%)	2.7%	(3.8%)
Basic Materials	679.5	▲	0.1%	(2.2%)	(15.9%)
Industrials	2,838.5	▲	0.4%	3.1%	(13.7%)
Consumer Goods	236.9	▼	(0.3%)	(4.0%)	20.0%
Health Care	411.2	=	0.0%	0.0%	(6.3%)
Consumer Services	374.7	▲	0.5%	1.8%	(32.1%)
Telecommunications	3,244.6	▼	(0.2%)	(1.2%)	(5.1%)
Banks	18,575.3	▲	0.4%	0.8%	(15.5%)
Insurance	362.9	▲	0.0%	3.1%	4.5%
Real Estate	1,958.8	▲	1.6%	5.3%	(13.3%)
Financial Services	2,684.2	▼	(0.9%)	14.6%	(3.0%)
Technology	7.3	▼	(2.0%)	6.9%	3.1%
Utilities	367.4	▲	2.8%	4.4%	N/A

Top 10 Companies by Market Capitalization

Company Name	Market Cap. (Mn KWD)	P/E (X)	ROE* (%)
1- National Bank of Kuwait	5,925.4	19.5	9.8%
2- Kuwait Finance House	4,827.0	24.1	10.7%
3- Zain	2,496.7	12.3	16.6%
4- Ahli United Bank - Bahrain	2,161.7	11.0	16.6%
5- Boubyan Bank	1,930.1	37.9	10.3%
6- Agility (PWC Logistics)	1,275.2	20.9	5.5%
7- Commercial Bank of Kuwait	996.0	NM	NM
8- Mabane Co.	711.7	23.6	6.5%
9- Gulf Bank	652.3	12.7	8.6%
10- Ahli United Bank - Kuwait	615.1	14.7	9.7%
Total	21,591	19.09	10.2%

*: ROE is calculated based on TTM 1H-2020 net profit & shareholders' equity as of 30-June-20

Top Movers and Most Active Stocks

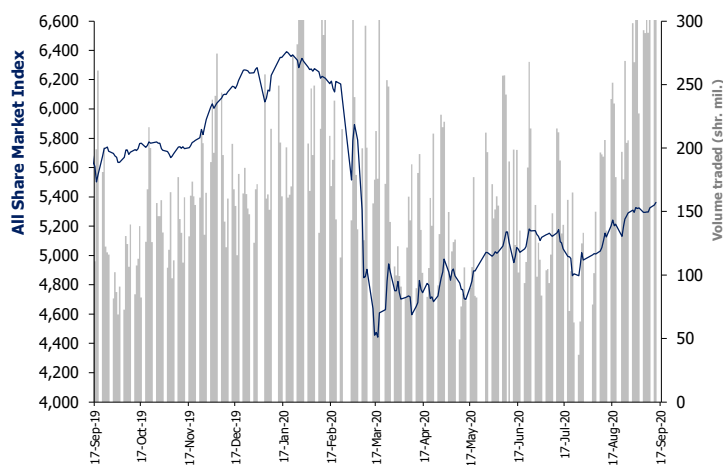
Today's Top % Gainers	Close (KWD)	Change (KWD)	Percent Change
The Commercial Real Estate Co.	0.109	0.012	12.4%
Al Madar Finance & Investment Co.	0.097	0.009	10.7%
Dar Al Thuraya Real Estate Co.	0.125	0.011	9.6%
Real Estate Trade Centers Co.	0.029	0.002	8.5%
Senery Holding Co.	0.020	0.002	8.3%

Today's Top % Losers	Close (KWD)	Change (KWD)	Percent Change
National Investment Co.	0.136	(0.019)	(12.3%)
A'ayan Leasing & Investment Co.	0.090	(0.010)	(10.1%)
Aqar Real Estate Investment Co.	0.060	(0.004)	(6.1%)
Burgan Co. for Drilling, Tdg. & Maint.	0.078	(0.005)	(5.7%)
Kuwait Remal Real Estate Co.	0.020	(0.001)	(5.3%)

Today's Most Active by Volume	Close (KWD)	Percent Change	Volume (Shares)
A'ayan Leasing & Investment Co.	0.090	(10.1%)	48,330,529
Warba Bank	0.238	4.8%	36,129,247
Arzan Financial Group For Fin. & Invest.	0.055	(4.0%)	26,925,701
Gulf Bank	0.214	0.5%	24,539,870
Kuwait International Bank	0.182	3.4%	23,020,552

Market Breadth	▲ 51	▼ 50	▬ 73		
Benchmark Return	Closing Value	DTD Chg	DTD % Chg	MTD % Chg	YTD % Chg
Premier Market Index	5,877.26	22.7	0.4%	0.4%	(15.7%)
Main 50 Index	4,395.03	9.5	0.2%	5.1%	(11.9%)
Main Market Index	4,345.85	5.4	0.1%	3.8%	(11.5%)
All Share Market Index	5,362.11	17.0	0.3%	1.3%	(14.6%)
Market Cap (KWD Mn)	31,989.26	100.6	0.3%	2.1%	(12.0%)

Index Performance relative to Volume



Market Trading Data and Volatility

Trading Indicators	Today's Value	DTD Chg	DTD % Chg	Average Daily YTD 2020	Average Daily YTD 2019
Volume (Shrs Mn)	399.3	(79.8)	(16.6%)	183.2	88.6
Value Traded (KWD Mn)	65.5	23.0	54.0%	34.9	16.9
No. of Trades	16,097	2,953	22.47%	8,358	3,810

Today's Most Active by Value	Close (KWD)	Percent Change	Value (KWD)
Boursa Kuwait Securities Co.	1.055	0.0%	9,369,648
Warba Bank	0.238	4.8%	8,599,057
Kuwait Finance House	0.629	0.5%	5,292,453
Gulf Bank	0.214	0.5%	5,240,707
A'ayan Leasing & Investment Co.	0.090	(10.1%)	4,541,567

Boursa Kuwait - Premier Market

Monday, September 14, 2020

	Premier Market Stocks	Closing Price			Market Capitalization			Valuation Multiples				ROE	YTD-20 Price Return	YTD-20 Trading Indicators	
		KWD	DTD Chg. (KWD)	D-T-D Return	KWD Mn	Weight in Premier Index	Weight in Boursa Kuwait	P/E (X)	P/BV (X)	Yield	Beta			Volume (Mn Shrs)	Value (KWD Mn)
▼	National Bank of Kuwait	0.865	(0.001)	(0.1%)	5,925	25.3%	18.5%	19.5	1.92	3.8%	1.28	9.8%	(15.1%)	1,052.51	887.83
▲	Gulf Bank	0.214	0.001	0.5%	652	2.8%	2.0%	12.7	1.09	4.9%	1.13	8.6%	(29.4%)	1,117.97	251.09
▲	Kuwait International Bank	0.182	0.006	3.4%	206	0.9%	0.6%	27.0	0.80	3.3%	1.00	3.0%	(30.3%)	1,099.68	210.65
▲	Burgan Bank	0.201	0.001	0.5%	528	2.3%	1.6%	8.4	0.74	6.0%	1.05	8.8%	(33.9%)	388.65	85.39
▲	Kuwait Finance House	0.629	0.003	0.5%	4,827	20.6%	15.1%	24.1	2.59	2.9%	1.42	10.7%	(14.7%)	1,736.68	1,134.21
▲	Boubyan Bank	0.592	0.003	0.5%	1,930	8.2%	6.0%	37.9	3.89	1.3%	1.04	10.3%	4.4%	179.41	96.28
▲	Kuwait Projects Co. (Holding)	0.151	0.001	0.7%	302	1.3%	0.9%	5.1	1.39	6.5%	0.57	27.3%	(30.1%)	193.66	32.10
▲	Mabane Co.	0.644	0.006	0.9%	712	3.0%	2.2%	23.6	1.54	2.0%	1.09	6.5%	(24.6%)	191.63	125.20
=	National Industries Group (Holding)	0.168	0.000	0.0%	240	1.0%	0.7%	NM	0.76	6.0%	1.42	NM	(30.3%)	551.10	100.34
▼	Boubyan Petrochemical Co.	0.528	(0.006)	(1.1%)	282	1.2%	0.9%	23.9	1.26	6.4%	0.73	5.3%	(21.0%)	69.23	39.12
▲	Qurain Petrochemicals Industries Co.	0.275	0.004	1.5%	302	1.3%	0.9%	11.7	0.72	5.5%	0.76	6.1%	(11.3%)	130.34	34.09
▲	Agility Public Warehousing Co.	0.629	0.004	0.6%	1,275	5.4%	4.0%	20.9	1.15	0.7%	1.47	5.5%	(11.6%)	483.82	315.87
▼	Mobile Telecommunications Co.	0.577	(0.001)	(0.2%)	2,497	10.7%	7.8%	12.3	2.03	5.7%	1.39	16.6%	(3.8%)	738.85	394.90
▲	Human Soft Holding Co.	2.788	0.017	0.6%	341	1.5%	1.1%	12.9	3.87	6.6%	0.47	29.9%	(7.4%)	40.94	112.90
▲	Ahli United Bank (B.S.C)	0.222	0.001	0.5%	2,162	9.2%	6.8%	11.0	1.82	8.1%	1.11	16.6%	(23.7%)	3,469.95	752.02
▲	Warba Bank	0.238	0.011	4.8%	375	1.6%	1.2%	NM	2.06	0.0%	0.98	NM	(9.1%)	586.96	125.77
▼	Mezzan Holding Co.	0.620	(0.001)	(0.2%)	193	0.8%	0.6%	29.9	1.75	2.4%	0.46	5.8%	24.0%	57.14	31.57
▼	Integrated Holding Co.	0.381	(0.002)	(0.5%)	84	0.4%	0.3%	31.8	1.38	7.9%	0.46	4.3%	(30.9%)	54.87	25.08
▲	Shamal Az-Zour Al-Oula Power and Water	0.334	0.009	2.8%	367	1.6%	1.1%	29.9	4.80	0.0%	NA	16.1%	NA	300.36	103.97
=	Boursa Kuwait Securities Co.	1.055	0.000	0.0%	212	0.9%	0.7%	18.6	6.47	0.0%	NA	34.8%	NA	8.71	9.37
Subtotal- Premier Market Stocks		5,877.26	22.69	0.39%	23,412	100%	73%	18.6	1.84	3.86%		9.9%	-14.6%	12,452.46	4,867.74
Remaining of the Market					8,577		27%	(109.9)	0.83	4.15%		-0.8%		18,141.77	953.46

Boursa Kuwait Daily Bulletin

Monday, September 14, 2020

Company	Reuters Ticker	Valuation Multiples				Price (KWD)		MKT Cap (KWD Mn.)	52 Weeks High (KWD)	52 Weeks Low (KWD)	YTD-20 Return #	Daily Trading Data			YTD-20 Capital Turnover	ROE
		Trailing P/E (X)	Trailing P/BV (X)	Dividend Yield	Beta	Closing	DTD Change					Volume (Shrs.)	Value (KWD)	ROE		
▲ Senergy Holding Co.	SENE.KW	NM	0.39	0.00%	1.14	0.020	0.002	3.9	0.027	0.014	(11.0%)	2,930,301	56,660	27.7%	NM	
= Independent Petroleum Group	IPGK.KW	14.1	0.98	5.62%	0.28	0.430	0.000	96.6	0.497	0.375	(10.8%)	0	0	0.3%	7.0%	
= National Petroleum Services Co.	NAPS.KW	12.2	2.86	6.41%	0.22	1.060	0.000	106.0	1.389	0.903	(9.4%)	0	0	0.2%	23.4%	
= The Energy House Co.	ENER.KW	NM	0.70	0.00%	0.94	0.022	0.000	16.4	0.036	0.014	(3.9%)	4,000	88	5.8%	NM	
▲ Gulf Petroleum Investment	GPIK.KW	NM	0.16	0.00%	1.07	0.022	0.000	6.4	0.024	0.012	7.0%	18,214,916	392,145	538.0%	NM	
▼ Burgan Co. for Drilling, Tdg. & Maint. *	ABAR.KW	14.3	0.29	0.00%	NA	0.078	(0.005)	18.9	0.098	0.060	(2.7%)	4,060	304	0.2%	2.0%	
Oil & Gas		29.5	0.90	4.92%				248.2			(3.8%)	21,153,277	449,196		3.1%	
= Kuwait Pipes Industries & Oil Services	PIPE.KW															
▼ Kuwait Foundry Co.	KFDC.KW	36.7	0.86	6.30%	0.66	0.238	(0.007)	17.2	0.510	0.192	(29.0%)	17,000	4,124	2.4%	2.3%	
▼ Boubyan Petrochemicals Co.*	BPCC.KW	23.9	1.26	6.45%	0.73	0.528	(0.006)	282.4	0.800	0.395	(21.0%)	353,936	187,719	12.9%	5.3%	
= Al Kout for Industrial Projects Co.	ALKK.KW	27.8	2.84	6.50%	0.02	0.769	0.000	77.6	0.850	0.769	(9.5%)	0	0	0.0%	10.2%	
▲ Qurain Petrochemical Industries Co. *	ALQK.KW	11.7	0.72	5.51%	0.76	0.275	0.004	302.3	0.341	0.163	(11.3%)	698,427	192,084	11.9%	6.1%	
Basic Materials		16.6	0.98	6.03%				679.5			(15.9%)	1,069,363	383,927		5.9%	
▲ Specialities Group Holding Co.	SPEC.KW	11.3	0.34	0.00%	0.39	0.062	0.001	10.1	0.078	0.050	(19.7%)	306,370	18,755	25.6%	3.0%	
▲ Kuwait Cement Co.	KCEM.KW	NM	0.81	2.53%	0.46	0.192	0.011	140.8	0.271	0.144	(22.0%)	2,379,937	448,115	8.3%	NM	
▼ Gulf Cable & Electrical Ind. Co.	CABL.KW	35.9	0.92	5.64%	0.91	0.709	(0.026)	148.8	0.742	0.390	45.3%	2,008,165	1,415,497	42.3%	2.6%	
= Heavy Eng'g Ind. & Shipbuilding Co.	SHIP.KW	6.2	1.00	8.04%	0.60	0.373	0.000	67.2	0.419	0.298	(7.9%)	20,670	7,615	23.2%	16.2%	
▲ Kuwait Portland Cement Co.	PCEM.KW	NM	1.25	5.24%	0.46	0.764	0.003	76.6	1.208	0.683	(22.2%)	22,514	17,322	5.7%	0.9%	
= Shuaiba Industrial Co.	PAPE.KW	25.1	0.73	3.79%	0.12	0.130	0.000	13.1	0.180	0.122	(16.1%)	0	0	0.6%	2.9%	
= Metal & Recycling Co.	MRCK.KW	NM	0.48	0.00%	0.21	0.041	0.000	4.8	0.070	0.020	(18.4%)	0	0	1.8%	NM	
= ACICO Industries Co.	ACIC.KW	NM	0.42	4.94%	0.37	0.106	0.000	32.0	0.144	0.081	(20.3%)	92,228	9,754	5.8%	NM	
= Hilal Cement Co.	HCKK.KW	NM	0.94	15.08%	0.12	0.100	0.000	10.1	0.126	0.063	(0.5%)	0	0	0.5%	NM	
▼ National Industries Co.	NIBM.KW	NM	0.70	6.43%	0.15	0.150	(0.005)	55.9	0.173	0.143	(9.1%)	18,388	2,831	0.3%	NM	
= Equipment Holding Co.	EQUI.KW	NM	0.41	0.00%	1.03	0.018	0.000	2.4	0.024	0.013	(18.7%)	0	0	24.2%	NM	
= National Co. for Consumer Industries	NCCI.KW	56.5	0.56	0.00%	NA	0.051	0.000	4.6	0.100	0.010	(6.6%)	0	0	0.7%	1.0%	
▲ Salbookh Trading Co.	SALB.KW	NM	0.53	0.00%	0.61	0.036	0.001	3.7	0.051	0.026	(28.7%)	242,501	8,459	25.2%	NM	
▲ Agility (PWC Logistics)	AGLT.KW	20.9	1.15	0.66%	1.47	0.629	0.004	1,275.2	0.748	0.357	(11.6%)	1,507,824	944,513	23.9%	5.5%	
= Educational Holding Group*	EDUK.KW	8.9	1.65	19.81%	0.45	0.300	0.000	73.6	0.475	0.228	(31.7%)	5,000	1,500	0.9%	18.6%	
▲ National Cleaning Co.	CLEA.KW	67.1	0.38	8.99%	0.82	0.054	0.001	13.5	0.088	0.047	(21.7%)	12,600	671	22.6%	0.6%	
▼ Kuwait & Gulf Link Transport Co.	KGLK.KW	NM	0.22	0.00%	0.76	0.044	(0.001)	12.9	0.078	0.042	(33.1%)	1,794,361	79,992	13.3%	NM	
▼ Kuwait Co. For Process Plant Const. & Cont.	KCPC.KW	6.8	1.27	7.00%	0.47	0.314	(0.003)	34.6	0.338	0.175	30.3%	65,300	20,427	35.8%	18.7%	
▲ Humansoft Holding Co.	HUMN.KW	12.9	3.87	6.60%	0.47	2.788	0.017	340.8	3.470	1.944	(7.4%)	227,935	631,252	33.5%	29.9%	
= Gulf Franchising Co.	GFCI.KW	NM	1.24	0.00%	NA	0.050	0.000	2.0	0.148	0.001	(33.0%)	0	0	0.6%	NM	
▼ National Shooting Co.	SHOOTING.KW	NM	0.28	0.00%	1.24	0.015	(0.001)	4.3	0.018	0.007	53.0%	2,820,594	43,083	86.6%	NM	
= Combined Group Contracting Co.	CGCK.KW	NM	0.67	12.10%	0.59	0.157	0.000	26.9	0.251	0.138	(36.8%)	1,141,399	178,001	88.9%	NM	
= United Projects Group	UPAC.KW	60.4	1.28	3.66%	NA	0.465	0.000	91.7	0.512	0.367	(9.2%)	0	0	0.0%	2.1%	
▲ ALAFCO Aviation Lease & Finance Co.*	ALAF.KW	25.6	0.48	5.00%	0.85	0.160	0.002	152.3	0.278	0.138	(41.2%)	2,515,773	398,657	27.6%	1.9%	
▲ Mubarrad Holding Co.	MBRD.KW	15.3	0.52	7.72%	0.95	0.064	0.002	10.4	0.089	0.049	(27.5%)	5,177,650	331,957	80.6%	3.4%	
= KGL Logistics Co.	LOGK.KW	NM	0.20	0.00%	0.77	0.027	0.000	20.1	0.043	0.023	(26.5%)	0	0	26.6%	NM	
▼ Integrated holding Co.	INTEGRATED.KW	31.8	1.38	7.87%	0.46	0.381	(0.002)	83.8	0.600	0.342	(30.9%)	313,716	118,763	24.9%	4.3%	
= Sharjah Cement Co.	SCEM.KW	NM	0.22	0.00%	0.22	0.042	0.000	25.7	0.064	0.042	0.0%	0	0	0.0%	NM	
▲ Gulf Cement Co.	GCEM.KW	NM	0.34	0.00%	0.20	0.032	0.000	26.4	0.062	0.029	(41.3%)	549,528	17,602	1.9%	NM	
▼ Umm Al-Qaiwain General Investments Co.	QIC.KW	NM	0.59	6.14%	0.17	0.081	(0.000)	29.5	0.096	0.052	22.0%	10,200	781	0.0%	0.4%	
▼ Fujairah Cement Industries Co.	FCEM.KW	NM	0.14	0.00%	0.48	0.033	(0.000)	11.9	0.052	0.029	(26.0%)	147,953	4,927	5.9%	NM	
= Ras-Al-Khaimah for White Cement Co.	RKWC.KW	67.2	0.54	7.69%	0.11	0.065	0.000	32.5	0.080	0.053	0.0%	0	0	0.0%	0.8%	
Industrials		52.6	0.92	3.65%				2,838.5			(13.7%)	21,380,606	4,700,473		1.7%	

Boursa Kuwait Daily Bulletin

Monday, September 14, 2020

Company	Reuters Ticker	Valuation Multiples				Price (KWD)		MKT Cap (KWD Mn.)	52 Weeks High (KWD)	52 Weeks Low (KWD)	YTD-20 Return #	Daily Trading Data		YTD-20 Capital Turnover	ROE
		Trailing P/E (X)	Trailing P/BV (X)	Dividend Yield	Beta	Closing	DTD Change					Volume (Shrs.)	Value (KWD)		
= Palms Agro Production Co.	PAPK.KW	15.3	0.55	0.00%	0.23	0.060	0.000	3.1	0.062	0.025	49.3%	12,050	723	0.7%	3.6%
▼ Livestock Transport & Trading Co.	CATT.KW	23.6	0.93	0.00%	0.27	0.182	(0.002)	39.4	0.200	0.152	4.0%	17,343	3,156	12.1%	4.0%
= Danah Alsafat Foodstuff Co.	DANK.KW	NM	0.63	0.00%	0.74	0.012	0.000	1.3	0.029	0.010	(25.3%)	0	0	97.4%	NM
▼ Mezzan Holding Co.	MEZZ.KW	29.9	1.75	2.37%	0.46	0.620	(0.001)	193.0	0.665	0.428	24.0%	504,783	311,548	18.4%	5.8%
Consumer Goods		NM	1.48	1.93%				236.9			20.0%	534,176	315,428		NM
= Advanced Technology Co.	ATCK.KW	37.5	1.61	1.59%	0.00	0.627	0.000	94.1	0.900	0.580	(22.6%)	0	0	0.0%	4.3%
= Yiacco Medical Co.	YIAC.KW	NM	6.55	0.00%	NA	0.707	0.000	12.1	0.777	0.672	0.1%	0	0	0.0%	NM
= Al-Maidan Clinic For Oral Health Services Co.	MIDAN.KW	51.1	7.58	0.00%	0.00	1.220	0.000	305.0	1.220	1.220	0.0%	0	0	0.0%	14.8%
Health Care		49.2	4.09	0.36%				411.2			(6.3%)	0	0		8.3%
= Kuwait National Cinema Co.	KCIN.KW	29.5	0.94	4.81%	0.27	0.670	0.000	67.7	1.050	0.600	(36.1%)	31,943	21,413	1.0%	3.2%
= Kuwait Hotels Co.	KHOT.KW	NM	1.30	0.00%	NA	0.086	0.000	5.0	0.101	0.069	(14.0%)	0	0	0.1%	NM
▼ Sultan Center Food Products Co.	SCFK.KW	17.4	0.68	0.00%	0.53	0.055	(0.001)	31.5	0.060	0.036	4.8%	8,452	461	6.8%	3.9%
= Kuwait Cable Vision Co.	KWTV.KW	NM	0.52	0.00%	0.21	0.014	0.000	0.5	0.026	0.012	0.0%	0	0	0.0%	NM
= IFA Hotels & Resorts Co.*	IFAH.KW	NM	1.74	0.00%	0.23	0.024	0.000	14.9	0.062	0.021	(57.3%)	61,500	1,420	3.4%	NM
▲ Oula Fuel Marketing Co.	OULA.KW	32.1	0.72	4.44%	0.46	0.111	0.001	44.9	0.134	0.095	(12.6%)	17,535	1,947	4.1%	2.2%
▲ Kuwait Resorts Co.	MUNK.KW	15.6	0.36	0.00%	0.69	0.049	0.001	10.3	0.060	0.038	(15.4%)	3,299,292	163,139	41.1%	2.3%
▲ Jazeera Airways Co.	JAZK.KW	NM	4.44	6.01%	0.70	0.582	0.005	116.4	1.110	0.372	(47.0%)	520,400	301,533	23.2%	NM
= Soor Fuel Marketing Co.	SOOR.KW	20.4	0.68	4.54%	0.46	0.109	0.000	44.1	0.129	0.096	(12.8%)	14,208	1,563	4.7%	3.3%
= Future Kid Entertainment and R.E Co.	KIDK.KW	NM	0.53	15.47%	0.02	0.077	0.000	8.9	0.110	0.069	(13.3%)	0	0	0.6%	NM
= Al Rai Media Group Co.	ALRA.KW	NM	0.86	0.00%	0.26	0.037	0.000	8.6	0.045	0.031	(2.4%)	0	0	0.3%	NM
▲ Jiyad Holding Co	JIYAD.KW	11.6	0.37	0.00%	0.63	0.041	0.000	14.4	0.047	0.029	5.1%	737,350	29,741	16.0%	3.2%
▲ Al Eid Food Co.	ALEID.KW	5.2	0.40	0.00%	NA	0.074	0.003	7.4	0.096	0.046	(6.3%)	32,550	2,427	6.2%	7.8%
Consumer Services		NM	0.94	4.17%				374.7			(32.1%)	4,723,230	523,643		NM
▼ Zain	ZAIN.KW	12.3	2.03	5.72%	1.39	0.577	(0.001)	2,496.7	0.604	0.407	(3.8%)	2,822,799	1,622,944	17.1%	16.6%
▼ National Mobile Telecom Co.	OORE.KW	21.0	0.56	8.26%	0.46	0.602	(0.004)	303.4	0.835	0.550	(27.3%)	122,099	73,446	3.1%	2.7%
▼ AAN digital services Co.	AAN.KW	NM	0.39	0.00%	1.33	0.013	(0.001)	11.4	0.021	0.009	(3.0%)	12,039,350	157,945	156.9%	NM
= Kuwait Telecommunication Co.	STC.KW	10.8	2.07	5.85%	0.58	0.855	0.000	427.0	0.870	0.680	8.5%	27,388	23,406	2.2%	19.2%
= Hayat Communications Co.	HAYK.KW	7.9	0.56	0.00%	1.22	0.065	0.000	6.0	0.098	0.030	(13.3%)	0	0	6.4%	7.0%
Telecommunications		12.6	1.61	5.94%				3,244.6			(5.1%)	15,011,636	1,877,740		12.8%
▼ National Bank of Kuwait	NBKK.KW	19.5	1.92	3.80%	1.28	0.865	(0.001)	5,925.4	1.062	0.654	(15.1%)	4,304,082	3,735,373	15.4%	9.8%
▲ Gulf Bank	GBKK.KW	12.7	1.09	4.89%	1.13	0.214	0.001	652.3	0.317	0.180	(29.4%)	24,539,870	5,240,707	36.7%	8.6%
= Commercial Bank of Kuwait	CBKK.KW	NM	1.47	3.98%	0.39	0.500	0.000	996.0	0.555	0.465	(5.5%)	0	0	1.4%	NM
▲ Ahli Bank of Kuwait	ABKK.KW	NM	0.51	3.86%	0.62	0.180	0.002	291.4	0.310	0.156	(29.7%)	544,518	96,764	6.6%	0.3%
▲ Ahli United Bank - Kuwait	BKME.KW	14.7	1.42	4.55%	0.86	0.284	0.004	615.1	0.330	0.225	(12.8%)	613,564	174,011	5.8%	9.7%
▲ Kuwait International Bank	KIBK.KW	27.0	0.80	3.31%	1.00	0.182	0.006	206.2	0.271	0.162	(30.3%)	23,020,552	4,138,231	97.1%	3.0%
▲ Burgan Bank	BURG.KW	8.4	0.74	5.96%	1.05	0.201	0.001	527.6	0.332	0.175	(33.9%)	859,289	173,160	14.8%	8.8%
▲ Kuwait Finance House	KFH.KW	24.1	2.59	2.86%	1.42	0.629	0.003	4,827.0	0.761	0.473	(14.7%)	8,437,304	5,292,453	22.6%	10.7%
▲ Boubyan Bank	BOUK.KW	37.9	3.89	1.34%	1.04	0.592	0.003	1,930.1	0.638	0.380	4.4%	1,457,893	861,588	5.5%	10.3%
▲ Warba Bank	WARB.KW	NM	2.06	0.00%	0.98	0.238	0.011	374.9	0.279	0.164	(9.1%)	36,129,247	8,599,057	37.3%	NM
▲ Ahli United Bank - Bahrain	AUBK.KW	11.0	1.82	8.12%	1.11	0.222	0.001	2,161.7	0.311	0.160	(23.7%)	9,244,182	2,053,303	35.6%	16.6%
Banks		20.6	1.85	3.84%				18,575.3			(15.5%)	109,150,501	30,364,647		9.0%

Boursa Kuwait Daily Bulletin

Monday, September 14, 2020

Company	Reuters Ticker	Valuation Multiples				Price (KWD)		MKT Cap (KWD Mn.)	52 Weeks High (KWD)	52 Weeks Low (KWD)	YTD-20 Return #	Daily Trading Data			YTD-20 Capital Turnover	ROE
		Trailing P/E (X)	Trailing P/BV (X)	Dividend Yield	Beta	Closing	DTD Change					Volume (Shrs.)	Value (KWD)	YTD-20		
= Kuwait Insurance Co.	KINS.KW	6.4	0.82	7.72%	NA	0.370	0.000	71.8	0.387	0.300	12.1%	0	0	1.2%	12.8%	
▼ Gulf Insurance Group	GINS.KW	7.5	1.02	6.04%	0.08	0.602	(0.003)	112.6	0.680	0.550	(8.8%)	2,001	1,231	0.1%	13.6%	
= Ahleiah Insurance Co.	AINS.KW	7.9	0.80	5.71%	0.12	0.410	0.000	86.1	0.424	0.367	0.6%	0	0	0.8%	10.1%	
▲ Warba Insurance Co.	WINS.KW	12.9	0.40	8.73%	0.36	0.079	0.004	13.9	0.094	0.051	29.9%	24,638	1,898	1.9%	3.1%	
= Kuwait Reinsurance Co.	KWRE.KW	8.7	0.79	2.18%	0.02	0.211	0.000	43.0	0.211	0.126	52.9%	0	0	0.1%	9.1%	
= First Takaful Insurance Co.	FTIK.KW	NM	0.47	0.00%	0.33	0.040	0.000	4.2	0.056	0.031	4.5%	1,000	40	2.6%	NM	
▼ Wethaq Takaful Insurance Co.	WETH.KW	NM	0.22	0.00%	0.38	0.023	(0.001)	2.6	0.035	0.018	(6.8%)	282,251	6,454	13.7%	NM	
= Bahrain Kuwait Insurance Co.	BKIK.KW	12.0	0.94	7.50%	0.02	0.200	0.000	28.6	0.220	0.190	0.0%	0	0	0.0%	7.8%	
Insurance		9.2	0.81	5.94%				362.9			4.5%	309,890	9,622		8.8%	
▲ Sokouk Holding Co.	SHCK.KW	NM	0.39	0.00%	1.16	0.027	0.000	15.7	0.040	0.022	(24.7%)	303,850	8,029	29.5%	NM	
▲ Kuwait Real Estate Co.	KREK.KW	25.9	0.74	0.00%	0.99	0.099	0.002	93.8	0.115	0.070	(5.7%)	2,235,178	220,157	18.6%	2.8%	
= United Real Estate Co.	UREK.KW	NM	0.33	0.00%	0.38	0.052	0.000	62.0	0.063	0.045	(14.8%)	15,000	783	0.6%	NM	
▲ National Real Estate Co.	NREK.KW	24.2	0.39	0.00%	1.15	0.073	0.001	104.4	0.090	0.058	(16.1%)	941,363	68,554	16.2%	1.6%	
▲ Salhia Real Estate Co.	SREK.KW	6.1	1.22	6.07%	0.34	0.397	0.002	203.6	0.460	0.324	(4.8%)	205,988	81,255	5.2%	20.2%	
= Tamdeen Real Estate Co.	TAMK.KW	NM	0.76	1.96%	0.10	0.248	0.000	107.1	0.343	0.241	(22.7%)	10,018	2,484	0.5%	NM	
▲ Ajjal Real Estate Entertainment Co.	AREC.KW	19.8	0.21	0.00%	0.50	0.139	0.002	27.0	0.213	0.115	(19.4%)	24,162	3,331	3.7%	1.1%	
= Al Massaleh Real Estate Co.	MREC.KW	NM	0.40	0.00%	0.24	0.035	0.000	8.2	0.040	0.026	(5.4%)	0	0	1.5%	NM	
▼ Arab Real Estate Co.	ARAB.KW	NM	0.26	0.00%	1.18	0.026	(0.001)	13.3	0.033	0.020	(11.9%)	1,132,267	29,805	22.7%	NM	
= AL-Enma'a Real Estate Co.*	ENMA.KW	20.4	0.46	0.00%	0.64	0.046	0.000	20.7	0.079	0.037	(26.4%)	2,024,196	94,205	24.5%	2.3%	
▲ Mabaneer Co.	MABK.KW	23.6	1.54	2.04%	1.09	0.644	0.006	711.7	0.878	0.434	(24.6%)	571,504	366,448	17.3%	6.5%	
= Injazzat Real Estate Development Co.	INJA.KW	NM	0.50	8.85%	0.20	0.077	0.000	26.6	0.091	0.061	(3.8%)	0	0	1.1%	NM	
▼ Investors Holding Group Co.	INVK.KW	NM	1.07	0.00%	1.16	0.022	(0.000)	13.4	0.032	0.007	168.8%	15,611,030	343,343	236.5%	NM	
▲ The Commercial Real Estate Co.	TIJK.KW	20.7	0.68	4.50%	0.53	0.109	0.012	192.9	0.103	0.083	16.5%	7,270,612	754,848	7.8%	3.3%	
= Sanam Real Estate Co.	SANK.KW	NM	0.40	0.00%	0.38	0.030	0.000	3.7	0.043	0.027	(25.0%)	0	0	2.4%	NM	
▼ A'ayan Real Estate Co.	AYRE.KW	NM	0.36	8.21%	0.57	0.060	(0.003)	24.9	0.080	0.048	(17.9%)	1,835,769	113,875	3.3%	NM	
▼ Aqar Real Estate Investment Co.	AQAR.KW	6.1	0.52	7.18%	NA	0.060	(0.004)	14.8	0.089	0.058	(21.3%)	117,000	7,068	1.7%	8.5%	
▼ Kuwait Real Estate Holding Co.	ALAQ.KW	NM	0.57	0.00%	0.53	0.024	(0.001)	4.6	0.034	0.022	(16.4%)	67,000	1,607	8.1%	NM	
= MAZAYA Holding Co.	MAZA.KW	NM	0.51	0.00%	0.99	0.054	0.000	37.4	0.067	0.047	(8.1%)	491,691	26,739	15.3%	NM	
▼ Tijara Real Estate & Investment Co.	TJJA.KW	14.2	0.38	5.05%	0.30	0.040	(0.000)	14.7	0.055	0.034	(20.8%)	80,000	3,168	0.2%	2.6%	
▼ Al TAMEER Real Estate Investment Co.	AMAR.KW	NM	0.34	0.00%	0.94	0.021	(0.000)	4.9	0.034	0.013	(22.6%)	2,350,932	48,004	86.2%	NM	
= Arkan Al-Kuwait Real Estate Co. *	ARKK.KW	9.2	0.64	9.36%	0.22	0.086	0.000	21.5	0.100	0.076	(3.8%)	0	0	9.0%	6.9%	
= Al-Argan International Real Estate Co.	ARGK.KW	NM	0.27	5.80%	0.42	0.083	0.000	22.0	0.141	0.060	(20.9%)	0	0	0.4%	NM	
▼ Abyaar Real Estate Development Co.	ABYR.KW	NM	0.21	0.00%	1.21	0.008	(0.000)	8.3	0.014	0.005	(3.8%)	2,709,386	20,191	59.4%	NM	
= Munshaat Real Estate Projects Co.	MUNS.KW	NM	0.51	0.00%	0.66	0.065	0.000	20.9	0.085	0.045	(12.2%)	0	0	6.2%	NM	
▼ First Dubai For Real Estate Development	FIRST.KW	NM	0.54	0.00%	1.44	0.041	(0.001)	40.5	0.055	0.027	13.8%	1,134,255	45,948	28.5%	0.6%	
▲ Kuwait Business Town Real Estate Co.	KBTK.KW	10.5	0.24	0.00%	1.05	0.026	0.000	16.3	0.046	0.022	(40.9%)	1,820,132	47,545	36.0%	2.2%	
= Real Estate Asset Management Co.	REAM.KW	NM	1.48	0.00%	0.08	0.204	0.000	22.4	0.204	0.060	132.1%	0	0	0.1%	NM	
▲ MENA Real Estate Co. *	MENK.KW	NM	0.20	0.00%	0.98	0.029	0.001	3.9	0.043	0.021	(31.2%)	3,483,050	100,158	91.5%	NM	
= Al Mudon International Real Estate Co.	ALMK.KW	NM	0.12	0.00%	0.86	0.016	0.000	1.6	0.029	0.015	(35.1%)	0	0	23.7%	NM	
▲ Real Estate Trade Centers Co.	MARA.KW	16.9	0.17	0.00%	0.33	0.029	0.002	4.1	0.050	0.018	26.3%	1,530,002	42,575	28.3%	1.0%	
▼ Kuwait Remal Real Estate Co.	REMAK.KW	NM	0.30	0.00%	0.85	0.020	(0.001)	6.0	0.027	0.013	(19.3%)	947,463	19,344	18.4%	NM	
▲ Mashaer Holding Co.	MASHAER.KW	NM	0.53	8.28%	0.53	0.060	0.001	10.8	0.086	0.048	(22.2%)	577,942	34,638	32.0%	NM	
= Effect Real Estate Co.	EFACT.KW	NM	0.29	0.00%	0.44	0.021	0.000	1.7	N/A	N/A	0.0%	0	0	0.0%	NM	
= Ajwan Gulf Real Estate Co.	AJWN.KW	NM	0.19	0.00%	0.60	0.011	0.000	2.2	0.016	0.009	(28.7%)	0	0	116.7%	NM	
▼ Al Masaken Intl. Real Estate Dev. Co.	MASKN.KW	NM	0.32	0.00%	0.14	0.027	(0.000)	2.7	0.074	0.027	(38.6%)	10,000	270	0.6%	0.4%	
= Dalqan Real Estate Co.	DALQ.KW	62.7	2.37	0.00%	NA	0.350	0.000	15.8	0.385	0.333	0.0%	0	0	0.0%	3.8%	
▲ Dar Al Thuraya Real Estate Co.	THURY.KW	NM	1.18	0.00%	0.02	0.125	0.011	18.3	0.190	0.040	78.3%	3,083	342	2.1%	0.2%	
= Osos Holding Group Co.	OSOS.KW	NM	0.87	7.02%	0.25	0.095	0.000	10.0	0.118	0.084	(5.1%)	0	0	7.0%	NM	
▼ KFH Capital REIT	BAITAKREIT.KW	NA	NA	0.00%	NA	1.029	(0.006)	24.3	1.138	0.984	NA	48,295	49,690	4.2%	NA	
Real Estate		NM	0.72	2.49%				1,958.8			(13.3%)	47,551,168	2,534,405		NM	

Boursa Kuwait Daily Bulletin

Monday, September 14, 2020

Company	Reuters Ticker	Valuation Multiples				Price (KWD)		MKT Cap (KWD Mn.)	52 Weeks High (KWD)	52 Weeks Low (KWD)	YTD-20 Return #	Daily Trading Data			YTD-20 Capital Turnover	ROE
		Trailing P/E (X)	Trailing P/BV (X)	Dividend Yield	Beta	Closing	DTD Change					Volume (Shrs.)	Value (KWD)	YTD-20		
▼ Kuwait Investment Co.	KINV.KW	NM	0.70	12.43%	0.71	0.120	(0.002)	66.2	0.172	0.095	(20.0%)	1,618,805	195,486	24.1%	NM	
= Commercial Facilities Co.	FACI.KW	NM	0.70	9.21%	0.52	0.185	0.000	99.3	0.235	0.179	(14.7%)	0	0	4.4%	NM	
= Int'l Financial Advisors Co.	IFIN.KW	NM	0.99	0.00%	1.32	0.031	0.000	8.2	0.060	0.027	(42.3%)	0	0	32.0%	NM	
▼ National Investment Co.	NINV.KW	NM	0.75	6.03%	1.24	0.136	(0.019)	119.2	0.158	0.080	(1.4%)	11,563,459	1,641,369	36.0%	NM	
▲ Kuwait Projects Co.(Holding)	KPRO.KW	5.1	1.39	6.51%	0.57	0.151	0.001	302.0	0.230	0.147	(30.1%)	4,122,704	620,582	9.7%	27.3%	
▲ Coast Invest. & Development Co.	COAS.KW	NM	0.43	0.00%	1.33	0.035	0.001	22.1	0.045	0.026	(11.8%)	370,020	12,951	18.6%	NM	
▼ The Securities House Co.	SECH.KW	NM	0.49	0.00%	1.14	0.043	(0.001)	24.0	0.063	0.027	(4.8%)	2,055,776	90,013	59.8%	NM	
▼ Arzan Financial Group For Fin. & Invest.	ARZA.KW	NM	0.50	0.00%	1.03	0.055	(0.002)	43.9	0.064	0.022	130.8%	26,925,701	1,461,304	202.7%	NM	
▼ Kuwait Financial Centre	MARKZ.KW	NM	0.46	6.28%	0.77	0.080	(0.001)	38.3	0.121	0.070	(24.9%)	478,222	38,273	25.1%	NM	
▼ Kuwait & M.E. Financial Inv. Co.	KMEF.KW	4.2	1.35	0.00%	0.61	0.119	(0.002)	31.4	0.138	0.063	33.0%	354,089	41,740	19.9%	32.2%	
▼ First Investment Co.	OLAK.KW	NM	0.43	0.00%	1.02	0.030	(0.001)	19.3	0.045	0.022	(13.7%)	13,370,506	416,984	174.7%	NM	
▲ Al-Mal Investment Co.	MALK.KW	NM	0.40	0.00%	1.20	0.010	0.000	2.9	0.016	0.008	(4.0%)	1,846,405	17,540	89.3%	NM	
▲ Gulf Investment House	GIHK.KW	NM	1.78	0.00%	1.00	0.099	0.003	63.9	0.100	0.038	53.0%	2,936,161	284,084	20.4%	NM	
▼ A'ayan Leasing & Investment Co.	AAAY.KW	NM	1.13	0.00%	1.24	0.090	(0.010)	72.9	0.102	0.032	91.9%	48,330,529	4,541,567	141.0%	NM	
= Bayan Investment Co.	BAYK.KW	NM	0.54	0.00%	0.85	0.047	0.000	18.5	0.053	0.031	23.4%	0	0	5.7%	NM	
▲ Osoul Investment Co.	OSUL.KW	NM	0.77	13.29%	0.44	0.082	0.002	12.9	0.121	0.070	9.6%	22,321	1,818	25.7%	NM	
▼ Kuwait Finance & Investment Co.	KFSK.KW	NM	0.39	0.00%	0.30	0.045	(0.001)	14.5	0.058	0.038	(9.1%)	403,410	17,750	9.3%	NM	
▼ Kamco Investment Co.	KAMC.KW	NM	0.51	6.90%	0.38	0.073	(0.002)	24.8	0.111	0.060	(19.4%)	1,134,445	82,899	13.5%	NM	
▼ National International Holding Co.	NIHK.KW	7.6	0.36	7.09%	0.67	0.062	(0.001)	14.1	0.081	0.049	(15.5%)	119,605	7,416	3.9%	4.8%	
▼ UniCap Investment and Finance	UNICAP.KW	NM	0.53	0.00%	0.65	0.041	(0.001)	9.7	0.057	0.035	(26.4%)	462,495	19,111	10.0%	NM	
▲ Al Madar Finance & Investment Co.	MADR.KW	19.7	0.96	4.99%	0.34	0.097	0.009	20.7	0.148	0.062	4.5%	7,119,807	667,427	23.4%	4.9%	
= Al-Deera Holding	DEER.KW	NM	1.92	0.00%	0.83	0.016	0.000	3.2	0.022	0.011	(20.0%)	0	0	6.1%	NM	
▼ Al Salam Group Holding Co.	SAGH.KW	33.0	0.25	0.00%	1.27	0.029	(0.000)	7.8	0.033	0.018	(1.7%)	10,454,617	304,084	232.0%	0.8%	
= Ekkittab Holding Co.	EKTT.KW	NM	0.39	0.00%	1.01	0.016	0.000	5.1	0.017	0.010	6.7%	1,232,320	19,461	46.2%	NM	
▼ Al Madina For Finance & Investment Co.	MADI.KW	NM	0.49	0.00%	1.22	0.014	(0.000)	5.8	0.019	0.009	(4.7%)	4,398,509	63,728	158.6%	NM	
▲ NOOR Financial Investment Co.	NOOR.KW	8.1	1.25	3.40%	1.24	0.176	0.008	72.7	0.184	0.076	47.9%	2,542,393	431,040	53.1%	15.4%	
▼ Tamdeen Investment Co.	TAMI.KW	NM	0.57	3.72%	0.33	0.321	(0.015)	110.8	0.400	0.199	(7.0%)	211	68	0.3%	NM	
= Kuwait Syrian Holding Co.	KSHC.KW	NM	0.23	0.00%	0.73	0.026	0.000	4.5	0.043	0.022	(19.0%)	12,410	316	25.1%	NM	
▼ Asiya Capital Investment Co.	ASIYA.KW	NM	0.39	0.00%	0.52	0.034	(0.000)	27.2	0.041	0.029	(16.9%)	2,915,878	100,153	1.5%	NM	
= Gulf North Africa Holding Co.	GNAH.KW	NM	0.75	0.00%	1.10	0.056	0.000	8.4	0.062	0.052	(9.4%)	0	0	4.0%	NM	
= Amwal International Investment Co.	AMWA.KW	NM	0.65	0.00%	0.39	0.034	0.000	6.2	0.053	0.030	14.3%	0	0	0.0%	NM	
▼ Alimtiq Investment Group	ALIMK.KW	NM	0.54	8.11%	0.95	0.095	(0.000)	107.2	0.137	0.071	(24.9%)	7,046,033	672,638	38.1%	NM	
= Tamkeen Holding Co.	TAMKE.KW	NM	0.05	0.00%	NA	0.005	0.000	0.3	N/A	N/A	0.0%	0	0	0.0%	NM	
▲ Manazel Holding Co.	MANK.KW	9.7	0.72	0.00%	1.38	0.033	0.000	14.4	0.048	0.021	(14.8%)	6,240,324	208,929	43.3%	7.5%	
= National Industries Group	NIND.KW	NM	0.76	5.95%	1.42	0.168	0.000	239.9	0.247	0.121	(30.3%)	2,616,048	436,399	38.6%	NM	
= Warba Capital Holding Co.	WARBACAP.KW	NM	0.55	0.00%	0.70	0.047	0.000	4.7	0.070	0.045	(27.0%)	0	0	8.7%	NM	
= Arabi Holding Group Co.	AGHC.KW	NM	1.23	0.00%	0.15	0.198	0.000	34.2	0.337	0.079	(27.7%)	0	0	3.1%	NM	
▲ Privatization Holding Co.	KPPC.KW	NM	0.33	0.00%	0.79	0.043	0.001	25.9	0.059	0.037	(14.1%)	866,632	36,702	5.7%	NM	
▼ Credit Rating & Collection Co.	TAHS.KW	NM	0.99	0.00%	NA	0.031	(0.001)	5.1	0.035	0.019	55.0%	431	13	0.2%	NM	
= Egypt Kuwait Holding Co.	ECHK.KW	12.1	2.53	0.00%	0.16	0.370	0.000	379.0	0.500	0.318	(17.8%)	0	0	0.0%	20.9%	
▲ GFH Financial Group	GFH.KW	19.1	1.02	7.65%	0.87	0.053	0.001	268.1	0.074	0.042	(23.8%)	526,211	27,115	1.6%	5.3%	
= Inovest	INOV.KW	9.0	0.49	6.80%	0.71	0.070	0.000	21.1	0.072	0.044	9.7%	50,005	3,411	5.6%	5.4%	
= Al Bareeq Holding	BAREEQ.KW	33.8	1.44	0.00%	0.03	0.088	0.000	66.0	0.110	0.088	(12.5%)	0	0	1.7%	4.3%	
= Amar For Finance and Leasing Co.	AMARF.KW	NM	0.63	0.00%	0.07	0.053	0.000	10.6	0.064	0.037	39.5%	0	0	11.0%	NM	
= Al-Manar Financing & Leasing Co.	ALMANAR.KW	NM	0.47	0.00%	NA	0.049	0.000	15.1	0.060	0.037	(5.4%)	51,700	2,415	6.7%	NM	
= Boursa Kuwait Securities Co	BOURSA.KW	18.6	6.47	0.00%	NA	1.055	0.000	211.8	N/A	N/A	0.0%	8,712,364	9,369,648	4.3%	34.8%	
Financial Services		NM	0.91	3.86%				2,684.2			(3.0%)	170,900,546	21,834,434		NM	

Boursa Kuwait Daily Bulletin

Monday, September 14, 2020

Company	Reuters Ticker	Valuation Multiples			Price (KWD)			MKT Cap (KWD Mn.)	52 Weeks High (KWD)	52 Weeks Low (KWD)	YTD-20 Return #	Daily Trading Data		YTD-20 Capital Turnover	ROE
		Trailing P/E (X)	Trailing P/BV (X)	Dividend Yield	Beta	Closing	DTD Change					Volume (Shrs.)	Value (KWD)		
▼ Automated Systems Co.	ASCK.KW	NM	0.59	5.48%	0.13	0.073	(0.002)	7.3	0.086	0.051	3.1%	10,000	730	1.8%	NM
Technology		NM	0.59	5.48%				7.3			3.1%	10,000	730		NM
▲ Shamal Az-Zour Al-Oula Power and Water Co.	AZNOULA.KW	29.9	4.80	0.00%	NA	0.334	0.009	367.4	0.500	0.297	N/A	7,512,204	2,464,250	27.3%	16.1%
Utilities		29.9	4.80	0.00%				367.4			N/A	7,512,204	2,464,250		16.1%

Boursa Kuwait	27.1	1.39	3.94%					31,989.3			(11.98%)	399,306,597	65,458,496		5.1%
----------------------	-------------	-------------	--------------	--	--	--	--	-----------------	--	--	-----------------	--------------------	-------------------	--	-------------

Year-to-Date 2020 Top Movers & Most Active Stocks

YTD Top % Gainers	Close (KWD)	Percent Change
Investors Holding Group Co.	0.022	168.8%
Real Estate Asset Management Co.	0.204	132.1%
Arzan Financial Group For Fin. & Invest.	0.055	130.8%
A'ayan Leasing & Investment Co.	0.090	91.9%
Dar Al Thuraya Real Estate Co.	0.125	78.3%

YTD Most Active by Volume	Close (KWD)	Volume (Shrs.)
Ahli United Bank - Bahrain	0.222	3,469,945,365
Kuwait Finance House	0.629	1,736,683,701
Arzan Financial Group For Fin. & Invest.	0.055	1,627,761,504
Gulf Petroleum Investment	0.022	1,594,726,668
Investors Holding Group Co.	0.022	1,473,237,251

YTD Top % Losers	Close (KWD)	Percent Change
IFA Hotels & Resorts Co.	0.024	(57.3%)
Jazeera Airways Co.	0.582	(47.0%)
Int'l Financial Advisors Co.	0.031	(42.3%)
Gulf Cement Co.	0.032	(41.3%)
ALAFCO Aviation Lease & Finance Co.	0.160	(41.2%)

YTD Most Active by Value	Close (KWD)	Value (KWD)
Kuwait Finance House	0.629	1,134,212,524
National Bank of Kuwait	0.865	887,827,602
Ahli United Bank - Bahrain	0.222	752,022,964
Zain	0.577	394,896,968
Agility (PWC Logistics)	0.629	315,874,774

* Different Fiscal Year Company

Disclaimer & Important Disclosures

Kamco Invest is authorized and fully regulated by the Capital Markets Authority ("CMA, Kuwait") and partially regulated by the Central Bank of Kuwait ("CBK").

This document is provided for informational purposes only. Nothing contained in this document constitutes investment, an offer to invest, legal, tax or other advice or guidance and should be disregarded when considering or making investment decisions. In preparing this document, Kamco Invest did not take into account the investment objectives, financial situation and particular needs of any particular person. Accordingly, before acting on this document, investors should independently evaluate the investments and strategies referred to herein and make their own determination of whether it is appropriate in light of their own financial circumstances and objectives. The entire content of this document is subject to copyright with all rights reserved. This research and the information contained herein may not be reproduced, distributed or transmitted in Kuwait or in any other jurisdiction to any other person or incorporated in any way into another document or other material without our prior written consent.

Analyst Certification
Each of the analysts identified in this report, if any and where applicable, certifies, with respect to the sector, companies or securities that the individual analyses, that (1) the views expressed in this report reflect his or her personal views about all of the subject companies and securities and (2) no part of his or her compensation was, is or will be directly or indirectly dependent on the specific recommendations or views expressed in this report.

Kamco Invest Ratings
Kamco Invest research is based on the analysis of regional and country economics, industries and company fundamentals. Kamco Invest company research reflects a long-term (12-month) target price for a company or stock. The ratings bands are:
 * **Outperform:** Target Price represents expected returns >= 10% in the next 12 months
 * **Neutral:** Target Price represents expected returns between -10% and +10% in the next 12 months
 * **Underperform:** Target Price represents an expected return of <-10% in the next 12 months
 In certain circumstances, ratings may differ from those implied by the criteria above. Kamco Invest policy is to maintain up-to-date fair value targets on the companies under its coverage, reflecting any material changes to the analyst's outlook on a company. Share price volatility may cause a stock to move outside the rating range implied by Kamco Invest's fair value target. Analysts may not necessarily change their ratings if this happens, but are expected to disclose the rationale behind their view to Kamco Invest clients.

Any terms and conditions proposed by you which are in addition to or which conflict with this Disclaimer are expressly rejected by Kamco Invest and shall be of no force or effect. The information contained in this document is based on current trade, statistical and other public information we consider reliable. We do not represent or warrant that such information is fair, accurate or complete and it should not be relied upon as such. Kamco Invest has no obligation to update, modify or amend this document or to otherwise notify a recipient thereof in the event that any opinion, forecast or estimate set forth herein, changes or subsequently becomes inaccurate. The publication is provided for informational uses only and is not intended for trading purposes. The information on publications does not give rise to any legally binding obligation and/or agreement, including without limitation any obligation to update such information. You shall be responsible for conducting your own investigation and analysis of the information contained or referred to in this document and of evaluating the merits and risks involved in the securities forming the subject matter of this or other such document. Moreover, the provision of certain data/information in the publication may be subject to the terms and conditions of other agreements to which Kamco Invest is a party.

Nothing in this document should be construed as a solicitation or offer, or recommendation, to acquire or dispose of any investment or to engage in any other transaction, or to provide any investment advice or service. This document is directed at Professional Clients and not Retail Clients within the meaning of CMA rules. Any other persons in receipt of this document must not rely upon or otherwise act upon it. Entities and individuals

Kamco Investment Company (DIFC) Limited ("Kamco Invest DIFC"), Office 205, Level 2, Gate Village 1, Dubai International Financial Centre, a wholly owned subsidiary of Kamco Investment Company KSC (Public), is regulated by the Dubai Financial Services Authority (DFSA). Kamco Invest DIFC may only undertake the financial services activities that fall within the scope of its existing DFSA licence. The information in this document may be distributed by Kamco Invest DIFC on behalf of Kamco Investment Company KSC (Public). This document is intended for Professional Clients or Market Counterparties only as defined by the DFSA, and no other person should act upon it.

This document may not be distributed in Saudi Arabia except to such persons as are permitted under the Offers of Securities Regulations issued by the Capital Market Authority. The Capital Market Authority does not make any representation as to the accuracy or completeness of this document, and expressly disclaims any liability whatsoever for any loss arising from, or incurred in reliance upon, any part of this document. The recipients of this document hereby should conduct their own due diligence on the accuracy of the information relating to the contents of this document. If you do not understand the contents of this document you should consult an authorized financial advisor.

Risk Warnings
Any prices, valuations or forecasts are indicative and are not intended to predict actual results, which may differ substantially from those reflected. The value of an investment may go up as well as down. The value of and income from any investment may fluctuate from day to day as a result of changes in relevant economic markets (including, without limitation, foreseeable or unforeseeable changes in interest rates, foreign exchange rates, default rates, prepayment rates, political or financial conditions, etc.).

Past performance is not indicative of future results. Any opinions, estimates, valuations or projections (target prices and ratings in particular) are inherently imprecise and a matter of judgment. They are statements of opinion and not of fact, based on current expectations, estimates and projections, and rely on beliefs and assumptions. Actual outcomes and returns may differ materially from what is expressed or forecasted. There are no guarantees of future performance. Certain transactions, including those involving futures, options, and other derivatives, give rise to substantial risk and are not suitable for all investors. This document does not propose to identify or to suggest all of the risks (direct or indirect) which may be associated with the investments and strategies referred to herein.

Conflict of Interest
Kamco Invest and its affiliates provide full investment banking services, and they and their directors, officers and employees, may take positions which conflict with the views expressed in this document. Salespeople, traders, and other professionals of Kamco Invest may provide oral or written market commentary or trading strategies to our clients and our proprietary trading desks that reflect opinions that are contrary to the opinions expressed in this document. Our asset management area, our proprietary trading desks and investing businesses may make investment decisions that are inconsistent with the recommendations or views expressed in this document. Kamco Invest may have or seek investment banking or other business relationships for which it will receive compensation from the companies that are the subject of this document. Facts and views presented in this document have not been reviewed by, and may not reflect information known to, professionals in other Kamco Invest business areas, including investment banking personnel. United Gulf Bank, Bahrain owns majority of Kamco Invest's shareholding and this ownership may create, or may create the appearance of, conflicts of interest.

No Liability & Warranty
Kamco Invest makes neither implied nor expressed representations or warranties and, to the fullest extent permitted by applicable law, we hereby expressly disclaim any and all express, implied and statutory representations and warranties of any kind, including, without limitation, any warranty as to accuracy, timeliness, completeness, and fitness for a particular purpose and/or non-infringement. Kamco Invest will accept no liability in any event including (without limitation) your reliance on the information contained in this document, any negligence for any damages or loss of any kind, including (without limitation) direct, indirect, incidental, special or consequential damages, expenses or losses arising out of, or in connection with your use or inability to use this document, or in connection with any error, omission, defect, computer virus or system failure, or