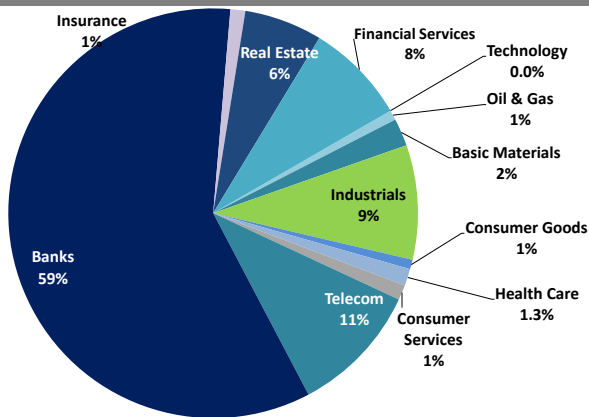


Boursa Kuwait Daily Report

September 13, 2020

Sector Weight by Market Cap



Top 10 Companies by Market Capitalization

Company Name	Market Cap. (Mn KWD)	P/E (X)	ROE* (%)
1- National Bank of Kuwait	5,932.3	19.6	9.8%
2- Kuwait Finance House	4,804.0	24.0	10.7%
3- Zain	2,501.0	12.3	16.6%
4- Ahli United Bank - Bahrain	2,152.0	10.9	16.6%
5- Boubyan Bank	1,920.3	37.7	10.3%
6- Agility (PWC Logistics)	1,267.1	20.7	5.5%
7- Commercial Bank of Kuwait	996.0	NM	NM
8- Mabane Co.	705.0	23.4	6.5%
9- Gulf Bank	649.3	12.6	8.6%
10- Ahli United Bank - Kuwait	606.4	14.5	9.7%
Total	21,533	19.04	10.2%

*: ROE is calculated based on TTM 1H-2020 net profit & shareholders' equity as of 30-June-20

Top Movers and Most Active Stocks

Today's Top % Gainers	Close (KWD)	Change (KWD)	Percent Change
A'ayan Leasing & Investment Co.	0.100	0.018	21.6%
Al Salam Group Holding Co.	0.029	0.003	10.6%
Asiya Capital Investment Co.	0.034	0.003	10.0%
Umm Al-Qaiwain General Investments Co.	0.082	0.007	9.9%
First Investment Co.	0.031	0.003	8.9%

Today's Top % Losers	Close (KWD)	Change (KWD)	Percent Change
Investors Holding Group Co.	0.022	(0.008)	(27.7%)
Al Eid Food Co.	0.071	(0.013)	(15.0%)
Gulf Cement Co.	0.032	(0.003)	(8.5%)
Dar Al Thuraya Real Estate Co.	0.114	(0.009)	(7.3%)
Al Bareeq Holding	0.088	(0.005)	(5.0%)

Today's Most Active by Volume	Close (KWD)	Percent Change	Volume (Shares)
AAN Digital Services Co.	0.014	6.3%	48,792,267
A'ayan Leasing & Investment Co.	0.100	21.6%	44,715,566
Al Salam Group Holding Co.	0.029	10.6%	39,206,478
Arzan Financial Group For Fin. & Invest.	0.057	(1.2%)	36,324,438
Gulf Petroleum Investment	0.021	0.0%	30,730,495

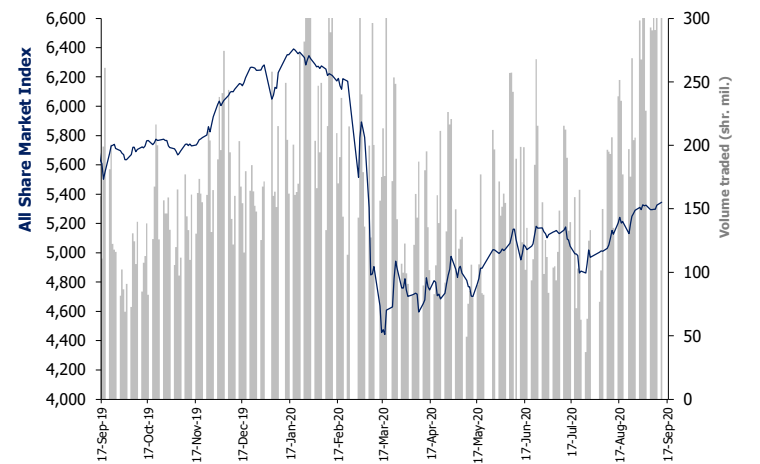
Source: Boursa Kuwait, Kamco Invest Research

Market Capitalization - Sector Returns

	Market Cap. (KWD Mn)	DTD %	DTD % Chg	MTD % Chg	YTD % Chg
Boursa Kuwait	31,676.8	▲	0.4%	1.1%	(12.8%)
Oil & Gas	249.0	▲	0.1%	3.1%	(3.5%)
Basic Materials	678.8	▼	(0.3%)	(2.3%)	(16.0%)
Industrials	2,825.9	▼	(0.0%)	2.6%	(14.1%)
Consumer Goods	237.6	▼	(0.4%)	(3.7%)	20.4%
Health Care	411.2	=	0.0%	0.0%	(6.3%)
Consumer Services	372.9	▼	(0.2%)	1.3%	(32.4%)
Telecommunications	3,251.3	▲	0.7%	(1.0%)	(4.9%)
Banks	18,497.9	▲	0.3%	0.4%	(15.9%)
Insurance	362.8	▲	1.1%	3.1%	4.4%
Real Estate	1,928.1	▼	(0.0%)	3.7%	(14.7%)
Financial Services	2,496.4	▲	1.4%	6.6%	(9.8%)
Technology	7.4	▲	6.4%	9.1%	5.2%
Utilities	357.5	=	0.0%	1.6%	N/A

Market Breadth	▲ 58	▼ 44	▬ 72		
Benchmark Return	Closing	DTD	DTD	MTD	YTD
	Value	Chg	% Chg	% Chg	% Chg
Premier Market Index	5,854.57	18.8	0.3%	0.0%	(16.1%)
Main 50 Index	4,385.53	30.8	0.7%	4.9%	(12.1%)
Main Market Index	4,340.50	24.7	0.6%	3.7%	(11.6%)
All Share Market Index	5,345.12	20.7	0.4%	1.0%	(14.9%)
Market Cap (KWD Mn)	31,676.82	118.2	0.4%	1.1%	(12.8%)

Index Performance relative to Volume



Market Trading Data and Volatility

Trading Indicators	Today's Value	DTD Chg	DTD % Chg	Average Daily YTD 2020	Average Daily YTD 2019
Volume (Shrs Mn)	479.1	122.1	34.2%	181.9	88.6
Value Traded (KWD Mn)	42.5	5.8	15.9%	34.7	16.9
No. of Trades	13,144	2,667	25.46%	8,311	3,810

Today's Most Active by Value	Close (KWD)	Percent Change	Value (KWD)
Kuwait Finance House	0.626	0.2%	4,598,955
Warba Bank	0.227	8.6%	4,371,246
A'ayan Leasing & Investment Co.	0.100	21.6%	4,100,218
National Bank of Kuwait	0.866	0.8%	3,945,285
Arzan Financial Group For Fin. & Invest.	0.057	(1.2%)	2,108,772

Boursa Kuwait - Premier Market

Sunday, September 13, 2020

	Premier Market Stocks	Closing Price			Market Capitalization			Valuation Multiples				ROE	YTD-20 Price Return	YTD-20 Trading Indicators	
		KWD	DTD Chg. (KWD)	D-T-D Return	KWD Mn	Weight in Premier Index	Weight in Boursa Kuwait	P/E (X)	P/BV (X)	Yield	Beta			Volume (Mn Shrs)	Value (KWD Mn)
▲	National Bank of Kuwait	0.866	0.007	0.8%	5,932	25.7%	18.7%	19.6	1.93	3.8%	1.28	9.8%	(15.0%)	1,048.21	884.09
=	Gulf Bank	0.213	0.000	0.0%	649	2.8%	2.0%	12.6	1.08	4.9%	1.13	8.6%	(29.7%)	1,093.43	245.85
▼	Kuwait International Bank	0.176	(0.001)	(0.6%)	199	0.9%	0.6%	26.1	0.77	3.4%	0.99	3.0%	(32.6%)	1,076.66	206.52
=	Burgan Bank	0.200	0.000	0.0%	525	2.3%	1.7%	8.4	0.74	6.0%	1.05	8.8%	(34.2%)	387.79	85.22
▲	Kuwait Finance House	0.626	0.001	0.2%	4,804	20.8%	15.2%	24.0	2.58	2.9%	1.42	10.7%	(15.1%)	1,728.25	1,128.92
▼	Boubyan Bank	0.589	(0.005)	(0.8%)	1,920	8.3%	6.1%	37.7	3.87	1.4%	1.04	10.3%	3.9%	177.96	95.41
▼	Kuwait Projects Co. (Holding)	0.150	(0.001)	(0.7%)	300	1.3%	0.9%	5.1	1.39	6.6%	0.57	27.3%	(30.6%)	189.53	31.48
▲	Mabane Co.	0.638	0.001	0.2%	705	3.1%	2.2%	23.4	1.53	2.1%	1.09	6.5%	(25.3%)	191.06	124.83
=	National Industries Group (Holding)	0.168	0.000	0.0%	240	1.0%	0.8%	NM	0.76	6.0%	1.42	NM	(30.3%)	548.48	99.90
▲	Boubyan Petrochemical Co.	0.534	0.002	0.4%	286	1.2%	0.9%	24.2	1.28	6.4%	0.73	5.3%	(20.1%)	68.87	38.94
▼	Qurain Petrochemicals Industries Co.	0.271	(0.003)	(1.1%)	298	1.3%	0.9%	11.5	0.71	5.6%	0.76	6.1%	(12.6%)	129.64	33.89
▼	Agility Public Warehousing Co.	0.625	(0.002)	(0.3%)	1,267	5.5%	4.0%	20.7	1.14	0.7%	1.47	5.5%	(12.1%)	482.31	314.93
▲	Mobile Telecommunications Co.	0.578	0.004	0.7%	2,501	10.8%	7.9%	12.3	2.04	5.7%	1.39	16.6%	(3.7%)	736.02	393.27
▼	Human Soft Holding Co.	2.771	(0.027)	(1.0%)	339	1.5%	1.1%	12.9	3.85	6.6%	0.47	29.9%	(8.0%)	40.72	112.27
=	Ahli United Bank (B.S.C)	0.221	0.000	0.0%	2,152	9.3%	6.8%	10.9	1.81	8.2%	1.11	16.6%	(24.1%)	3,460.70	749.97
▲	Warba Bank	0.227	0.018	8.6%	358	1.5%	1.1%	NM	1.96	0.0%	0.98	NM	(13.3%)	550.83	117.17
▼	Mezzan Holding Co.	0.621	(0.003)	(0.5%)	193	0.8%	0.6%	30.0	1.75	2.4%	0.46	5.8%	24.2%	56.64	31.25
▼	Integrated Holding Co.	0.383	(0.003)	(0.8%)	84	0.4%	0.3%	31.9	1.39	7.8%	0.46	4.3%	(30.5%)	54.55	24.96
=	Shamal Az-Zour Al-Oula Power and Water	0.325	0.000	0.0%	358	1.5%	1.1%	29.1	4.67	0.0%	2.25	16.1%	NA	292.85	101.50
Subtotal- Premier Market Stocks		5,854.57	18.85	0.32%	23,110	100%	73%	18.5	1.82	3.91%		9.8%	-14.9%	12,314.50	4,820.38
Remaining of the Market					8,567		27%	(109.8)	0.83	4.16%		-0.8%		17,880.42	935.36

Source: Kamco Research

Boursa Kuwait Daily Bulletin

Sunday, September 13, 2020

Company	Reuters Ticker	Valuation Multiples				Price (KWD)		MKT Cap (KWD Mn.)	52 Weeks High (KWD)	52 Weeks Low (KWD)	YTD-20 Return #	Daily Trading Data		YTD-20 Capital Turnover	ROE
		Trailing P/E (X)	Trailing P/BV (X)	Dividend Yield	Beta	Closing	DTD Change					Volume (Shrs.)	Value (KWD)		
▲ Senergy Holding Co.	SENE.KW	NM	0.36	0.00%	1.13	0.018	0.001	3.6	0.027	0.014	(17.8%)	1,007,983	18,145	26.3%	NM
= Independent Petroleum Group	IPGK.KW	14.1	0.98	5.62%	0.28	0.430	0.000	96.6	0.497	0.375	(10.8%)	0	0	0.3%	7.0%
= National Petroleum Services Co.	NAPS.KW	12.2	2.86	6.41%	0.22	1.060	0.000	106.0	1.389	0.903	(9.4%)	0	0	0.2%	23.4%
= The Energy House Co.	ENER.KW	NM	0.70	0.00%	0.94	0.022	0.000	16.4	0.036	0.014	(3.9%)	30,022	614	5.8%	NM
= Gulf Petroleum Investment	GPIK.KW	NM	0.15	0.00%	1.07	0.021	0.000	6.3	0.024	0.012	6.5%	30,730,495	658,280	531.9%	NM
= Burgan Co. for Drilling, Tdg. & Maint. *	ABAR.KW	15.2	0.31	0.00%	NA	0.083	0.000	20.0	0.098	0.060	3.1%	0	0	0.1%	2.0%
Oil & Gas		29.6	0.91	4.91%				249.0			(3.5%)	31,768,500	677,039		3.1%
= Kuwait Foundry Co.	KFDC.KW	37.8	0.89	6.12%	0.66	0.245	0.000	17.7	0.510	0.192	(26.9%)	5,625	1,378	2.4%	2.3%
▲ Boubyan Petrochemicals Co.*	BPCC.KW	24.2	1.28	6.37%	0.73	0.534	0.002	285.6	0.800	0.395	(20.1%)	51,795	27,717	12.9%	5.3%
= Al Kout for Industrial Projects Co.	ALKK.KW	27.8	2.84	6.50%	0.02	0.769	0.000	77.6	0.850	0.769	(9.5%)	0	0	0.0%	10.2%
▼ Qurain Petrochemical Industries Co. *	ALQK.KW	11.5	0.71	5.59%	0.76	0.271	(0.003)	297.9	0.341	0.163	(12.6%)	1,111,637	301,170	11.8%	6.1%
Basic Materials		16.6	0.98	6.04%				678.8			(16.0%)	1,169,057	330,265		5.9%
▼ Specialities Group Holding Co.	SPEC.KW	11.1	0.34	0.00%	0.39	0.061	(0.000)	10.0	0.078	0.050	(21.0%)	246,356	14,938	25.4%	3.0%
▲ Kuwait Cement Co.	KCEM.KW	NM	0.76	2.69%	0.46	0.181	0.007	132.7	0.271	0.144	(26.4%)	1,294,825	232,328	8.0%	NM
▲ Gulf Cable & Electrical Ind. Co.	CABL.KW	37.2	0.95	5.44%	0.91	0.735	0.005	154.3	0.737	0.390	50.6%	815,225	599,050	41.3%	2.6%
= Heavy Eng'g Ind. & Shipbuilding Co.	SHIP.KW	6.2	1.00	8.04%	0.60	0.373	0.000	67.2	0.419	0.298	(7.9%)	160,753	59,462	23.2%	16.2%
▼ Kuwait Portland Cement Co.	PCEM.KW	NM	1.24	5.26%	0.46	0.761	(0.019)	76.3	1.208	0.683	(22.5%)	6,780	5,148	5.7%	0.9%
= Shuaiba Industrial Co.	PAPE.KW	25.1	0.73	3.79%	0.12	0.130	0.000	13.1	0.180	0.122	(16.1%)	0	0	0.6%	2.9%
▼ Metal & Recycling Co.	MRCK.KW	NM	0.48	0.00%	0.21	0.041	(0.002)	4.8	0.070	0.020	(18.4%)	10,350	422	1.8%	NM
▲ ACICO Industries Co.	ACIC.KW	NM	0.42	4.94%	0.37	0.106	0.007	32.0	0.144	0.081	(20.3%)	350,177	35,127	5.8%	NM
▲ Hilal Cement Co.	HCCCK.KW	NM	0.94	15.08%	0.12	0.100	0.006	10.1	0.126	0.063	(0.5%)	7,400	736	0.5%	NM
= National Industries Co.	NIBM.KW	NM	0.73	6.22%	0.15	0.155	0.000	57.7	0.173	0.143	(6.1%)	27,545	4,150	0.3%	NM
▲ Equipment Holding Co.	EQUI.KW	NM	0.41	0.00%	1.03	0.018	0.001	2.4	0.024	0.013	(18.7%)	1,344,930	23,864	24.2%	NM
= National Co. for Consumer Industries	NCCI.KW	56.5	0.56	0.00%	NA	0.051	0.000	4.6	0.100	0.010	(6.6%)	0	0	0.7%	1.0%
▲ Salbookh Trading Co.	SALB.KW	NM	0.52	0.00%	0.61	0.035	0.001	3.6	0.051	0.026	(31.1%)	32,457	1,079	25.0%	NM
▼ Agility (PWC Logistics)	AGLT.KW	20.7	1.14	0.66%	1.47	0.625	(0.002)	1,267.1	0.748	0.357	(12.1%)	1,753,695	1,099,115	23.8%	5.5%
= Educational Holding Group*	EDUK.KW	8.9	1.65	19.81%	0.45	0.300	0.000	73.6	0.475	0.228	(31.7%)	0	0	0.9%	18.6%
▼ National Cleaning Co.	CLEA.KW	66.5	0.38	9.07%	0.82	0.054	(0.001)	13.4	0.088	0.047	(22.5%)	66,105	3,542	22.6%	0.6%
▼ Kuwait & Gulf Link Transport Co.	KGLK.KW	NM	0.22	0.00%	0.76	0.045	(0.001)	13.1	0.078	0.042	(32.2%)	665,279	30,011	12.7%	NM
▼ Kuwait Co. For Process Plant Const. & Cont.	KPCP.KW	6.8	1.28	6.93%	0.47	0.317	(0.002)	35.0	0.338	0.175	31.6%	220,580	68,891	35.7%	18.7%
▼ Humansoft Holding Co.	HUMN.KW	12.9	3.85	6.64%	0.47	2.771	(0.027)	338.7	3.470	1.944	(8.0%)	299,154	827,527	33.3%	29.9%
= Gulf Franchising Co.	GFCI.KW	NM	1.24	0.00%	NA	0.050	0.000	2.0	0.148	0.001	(33.0%)	0	0	0.6%	NM
▼ National Shooting Co.	SHOOTING.KW	NM	0.29	0.00%	1.24	0.016	(0.000)	4.5	0.018	0.007	60.0%	4,435,933	71,794	85.6%	NM
▲ Combined Group Contracting Co.	CGCK.KW	NM	0.67	12.10%	0.59	0.157	0.001	26.9	0.251	0.138	(36.8%)	672,116	105,306	88.2%	NM
= United Projects Group	UPAC.KW	60.4	1.28	3.66%	NA	0.465	0.000	91.7	0.512	0.367	(9.2%)	0	0	0.0%	2.1%
= ALAFCO Aviation Lease & Finance Co.*	ALAF.KW	25.3	0.47	5.06%	0.85	0.158	0.000	150.4	0.278	0.138	(41.9%)	676,566	106,869	27.3%	1.9%
▲ Mubarrad Holding Co.	MBRD.KW	14.9	0.51	7.97%	0.95	0.062	0.004	10.1	0.089	0.049	(29.8%)	4,953,388	296,441	77.4%	3.4%
= KGL Logistics Co.	LOGK.KW	NM	0.20	0.00%	0.77	0.027	0.000	20.1	0.043	0.023	(26.5%)	0	0	26.6%	NM
▼ Integrated holding Co.	INTEGRATED.KW	31.9	1.39	7.83%	0.46	0.383	(0.003)	84.3	0.600	0.342	(30.5%)	425,570	164,411	24.8%	4.3%
= Sharjah Cement Co.	SCEM.KW	NM	0.22	0.00%	0.22	0.042	0.000	25.7	0.064	0.042	0.0%	0	0	0.0%	NM
▼ Gulf Cement Co.	GCEM.KW	NM	0.34	0.00%	0.20	0.032	(0.003)	26.4	0.062	0.029	(41.5%)	595,575	19,223	1.9%	NM
▲ Umm Al-Qaiwain General Investments Co.	QIC.KW	NM	0.59	6.11%	0.17	0.082	0.007	29.7	0.096	0.052	22.6%	100	8	0.0%	0.4%
▼ Fujairah Cement Industries Co.	FCEM.KW	NM	0.14	0.00%	0.48	0.033	(0.002)	11.9	0.052	0.029	(25.8%)	508,405	17,082	5.9%	NM
= Ras-Al-Khaimah for White Cement Co.	RKWC.KW	67.2	0.54	7.69%	0.11	0.065	0.000	32.5	0.080	0.053	0.0%	0	0	0.0%	0.8%
Industrials		52.4	0.91	3.67%				2,825.9			(14.1%)	19,569,264	3,786,525		1.7%

Boursa Kuwait Daily Bulletin

Sunday, September 13, 2020

Company	Reuters Ticker	Valuation Multiples				Price (KWD)		MKT Cap (KWD Mn.)	52 Weeks High (KWD)	52 Weeks Low (KWD)	YTD-20 Return #	Daily Trading Data		YTD-20 Capital Turnover	ROE
		Trailing P/E (X)	Trailing P/BV (X)	Dividend Yield	Beta	Closing	DTD Change					Volume (Shrs.)	Value (KWD)		
▼ Palms Agro Production Co.	PAPK.KW	15.3	0.55	0.00%	0.23	0.060	(0.001)	3.1	0.062	0.025	49.3%	2,674	160	0.7%	3.6%
= Livestock Transport & Trading Co.	CATT.KW	23.9	0.95	0.00%	0.27	0.184	0.000	39.9	0.200	0.152	5.1%	362,999	66,772	12.1%	4.0%
= Danah Alsafat Foodstuff Co.	DANK.KW	NM	0.63	0.00%	0.74	0.012	0.000	1.3	0.029	0.010	(25.3%)	0	0	97.4%	NM
▼ Mezzan Holding Co.	MEZZ.KW	30.0	1.75	2.37%	0.46	0.621	(0.003)	193.3	0.665	0.428	24.2%	84,480	52,647	18.2%	5.8%
Consumer Goods		NM	1.48	1.93%		237.6					20.4%	450,153	119,579		NM
= Advanced Technology Co.	ATCK.KW	37.5	1.61	1.59%	0.00	0.627	0.000	94.1	0.900	0.580	(22.6%)	0	0	0.0%	4.3%
= Yiacco Medical Co.	YIAC.KW	NM	6.55	0.00%	NA	0.707	0.000	12.1	0.777	0.672	0.1%	0	0	0.0%	NM
= Al-Maidan Clinic For Oral Health Services Co.	MIDAN.KW	51.1	7.58	0.00%	0.00	1.220	0.000	305.0	1.220	1.220	0.0%	0	0	0.0%	14.8%
Health Care		49.2	4.09	0.36%		411.2					(6.3%)	0	0		8.3%
▲ Kuwait National Cinema Co.	KCIN.KW	29.5	0.94	4.81%	0.27	0.670	0.010	67.7	1.050	0.600	(36.1%)	12,975	8,683	0.9%	3.2%
= Kuwait Hotels Co.	KHOT.KW	NM	1.30	0.00%	NA	0.086	0.000	5.0	0.101	0.069	(14.0%)	0	0	0.1%	NM
= Sultan Center Food Products Co.	SCFK.KW	17.5	0.69	0.00%	0.53	0.055	0.000	31.8	0.060	0.036	5.8%	0	0	6.8%	3.9%
= Kuwait Cable Vision Co.	KWTV.KW	NM	0.52	0.00%	0.21	0.014	0.000	0.5	0.026	0.012	0.0%	0	0	0.0%	NM
▼ IFA Hotels & Resorts Co.*	IFAH.KW	NM	1.74	0.00%	0.23	0.024	(0.000)	14.9	0.062	0.021	(57.3%)	101,000	2,324	3.4%	NM
▼ Oula Fuel Marketing Co.	OULA.KW	31.8	0.71	4.48%	0.46	0.110	(0.001)	44.5	0.134	0.095	(13.4%)	26,047	2,882	4.1%	2.2%
▲ Kuwait Resorts Co.	MUNK.KW	15.1	0.34	0.00%	0.69	0.048	0.000	10.0	0.060	0.038	(17.9%)	912,350	43,628	39.6%	2.3%
▼ Jazeera Airways Co.	JAZK.KW	NM	4.41	6.07%	0.70	0.577	(0.003)	115.4	1.110	0.372	(47.5%)	110,616	63,785	23.0%	NM
▼ Soor Fuel Marketing Co.	SOOR.KW	20.4	0.68	4.54%	0.46	0.109	(0.001)	44.1	0.129	0.096	(12.8%)	36,933	4,039	4.7%	3.3%
= Future Kid Entertainment and R.E Co.	KIDK.KW	NM	0.53	15.47%	0.02	0.077	0.000	8.9	0.110	0.069	(13.3%)	0	0	0.6%	NM
= Al Rai Media Group Co.	ALRA.KW	NM	0.86	0.00%	0.26	0.037	0.000	8.6	0.045	0.031	(2.4%)	0	0	0.3%	NM
▲ Jiyad Holding Co	JIYAD.KW	11.5	0.36	0.00%	0.62	0.041	0.002	14.2	0.047	0.029	4.1%	2,623,979	107,517	15.7%	3.2%
▼ Al Eid Food Co.	ALEID.KW	5.0	0.39	0.00%	NA	0.071	(0.013)	7.2	0.096	0.046	(9.6%)	570,357	40,858	6.2%	7.8%
Consumer Services		NM	0.93	4.19%		372.9					(32.4%)	4,394,257	273,716		NM
▲ Zain	ZAIN.KW	12.3	2.04	5.71%	1.39	0.578	0.004	2,501.0	0.604	0.407	(3.7%)	1,828,428	1,055,250	17.0%	16.6%
▲ National Mobile Telecom Co.	OORE.KW	21.1	0.56	8.20%	0.46	0.606	0.016	305.4	0.835	0.550	(26.8%)	82,194	49,259	3.1%	2.7%
▲ AAN digital services Co.	AAN.KW	NM	0.41	0.00%	1.33	0.014	0.001	11.9	0.021	0.009	0.7%	48,792,267	659,056	155.6%	NM
▼ Kuwait Telecommunication Co.	STC.KW	10.8	2.07	5.85%	0.58	0.855	(0.009)	427.0	0.870	0.680	8.5%	23,475	19,915	2.2%	19.2%
= Hayat Communications Co.	HAYK.KW	7.9	0.56	0.00%	1.22	0.065	0.000	6.0	0.098	0.030	(13.3%)	0	0	6.4%	7.0%
Telecommunications		12.6	1.61	5.93%		3,251.3					(4.9%)	50,726,364	1,783,479		12.8%
▲ National Bank of Kuwait	NBKK.KW	19.6	1.93	3.80%	1.28	0.866	0.007	5,932.3	1.062	0.654	(15.0%)	4,552,783	3,945,285	15.3%	9.8%
= Gulf Bank	GBKK.KW	12.6	1.08	4.91%	1.13	0.213	0.000	649.3	0.317	0.180	(29.7%)	6,976,101	1,485,938	35.9%	8.6%
= Commercial Bank of Kuwait	CBKK.KW	NM	1.47	3.98%	0.39	0.500	0.000	996.0	0.555	0.465	(5.5%)	148	74	1.4%	NM
= Ahli Bank of Kuwait	ABKK.KW	NM	0.51	3.90%	0.62	0.178	0.000	288.2	0.310	0.156	(30.5%)	920,009	162,866	6.6%	0.3%
▼ Ahli United Bank - Kuwait	BKME.KW	14.5	1.40	4.62%	0.86	0.280	(0.001)	606.4	0.330	0.225	(14.0%)	454,398	127,440	5.7%	9.7%
▼ Kuwait International Bank	KIBK.KW	26.1	0.77	3.42%	0.99	0.176	(0.001)	199.4	0.271	0.162	(32.6%)	7,680,729	1,349,988	95.0%	3.0%
= Burgan Bank	BURG.KW	8.4	0.74	5.99%	1.05	0.200	0.000	525.0	0.332	0.175	(34.2%)	2,187,296	436,477	14.8%	8.8%
▲ Kuwait Finance House	KFH.KW	24.0	2.58	2.88%	1.42	0.626	0.001	4,804.0	0.761	0.473	(15.1%)	7,338,025	4,598,955	22.5%	10.7%
▼ Boubyan Bank	BOUK.KW	37.7	3.87	1.35%	1.04	0.589	(0.005)	1,920.3	0.638	0.380	3.9%	581,745	343,687	5.5%	10.3%
▲ Warba Bank	WARB.KW	NM	1.96	0.00%	0.98	0.227	0.018	357.5	0.279	0.164	(13.3%)	20,304,880	4,371,246	35.0%	NM
= Ahli United Bank - Bahrain	AUBK.KW	10.9	1.81	8.15%	1.11	0.221	0.000	2,152.0	0.311	0.160	(24.1%)	6,250,436	1,380,326	35.5%	16.6%
Banks		20.5	1.84	3.86%		18,497.9					(15.9%)	57,246,550	18,202,283		9.0%

Boursa Kuwait Daily Bulletin

Sunday, September 13, 2020

Company	Reuters Ticker	Valuation Multiples				Price (KWD)		MKT Cap (KWD Mn.)	52 Weeks High (KWD)	52 Weeks Low (KWD)	YTD-20 Return #	Daily Trading Data		YTD-20 Capital Turnover	ROE
		Trailing P/E (X)	Trailing P/BV (X)	Dividend Yield	Beta	Closing	DTD Change					Volume (Shrs.)	Value (KWD)		
▲ Kuwait Insurance Co.	KINS.KW	6.4	0.82	7.72%	NA	0.370	0.018	71.8	0.387	0.300	12.1%	6,141	2,162	1.2%	12.8%
= Gulf Insurance Group	GINS.KW	7.5	1.02	6.01%	0.08	0.605	0.000	113.2	0.680	0.550	(8.3%)	0	0	0.1%	13.6%
= Ahleiah Insurance Co.	AINS.KW	7.9	0.80	5.71%	0.12	0.410	0.000	86.1	0.424	0.367	0.6%	0	0	0.8%	10.1%
▼ Warba Insurance Co.	WINS.KW	12.2	0.38	9.21%	0.36	0.075	(0.001)	13.2	0.094	0.051	23.2%	10,244	768	1.9%	3.1%
▲ Kuwait Reinsurance Co.	KWRE.KW	8.7	0.79	2.18%	0.02	0.211	0.003	43.0	0.208	0.126	52.9%	600	127	0.1%	9.1%
= First Takaful Insurance Co.	FTIK.KW	NM	0.47	0.00%	0.33	0.040	0.000	4.2	0.056	0.031	4.5%	0	0	2.6%	NM
▼ Wethaq Takaful Insurance Co.	WETH.KW	NM	0.22	0.00%	0.38	0.024	(0.000)	2.7	0.035	0.018	(3.2%)	228,453	5,275	13.4%	NM
= Bahrain Kuwait Insurance Co.	BKIK.KW	12.0	0.94	7.50%	0.02	0.200	0.000	28.6	0.220	0.190	0.0%	0	0	0.0%	7.8%
Insurance		9.2	0.81	5.94%				362.8			4.4%	245,438	8,332		8.8%
▲ Sokouk Holding Co.	SHCK.KW	NM	0.39	0.00%	1.16	0.026	0.000	15.7	0.040	0.022	(25.0%)	2,866,410	76,143	29.4%	NM
▼ Kuwait Real Estate Co.	KREK.KW	25.5	0.73	0.00%	0.99	0.097	(0.000)	92.3	0.115	0.070	(7.2%)	1,207,372	116,959	18.3%	2.8%
= United Real Estate Co.	UREK.KW	NM	0.33	0.00%	0.38	0.052	0.000	62.0	0.063	0.045	(14.8%)	8,500	444	0.6%	NM
▼ National Real Estate Co.	NREK.KW	23.9	0.38	0.00%	1.15	0.072	(0.001)	103.1	0.090	0.058	(17.2%)	481,619	34,788	16.1%	1.6%
▼ Salhia Real Estate Co.	SREK.KW	6.0	1.22	6.10%	0.34	0.395	(0.001)	202.5	0.460	0.324	(5.3%)	100,632	39,762	5.2%	20.2%
= Tamdeen Real Estate Co.	TAMK.KW	NM	0.76	1.96%	0.10	0.248	0.000	107.1	0.343	0.241	(22.7%)	365	91	0.5%	NM
= Ajial Real Estate Entertainment Co.	AREC.KW	19.6	0.21	0.00%	0.50	0.137	0.000	26.6	0.213	0.115	(20.5%)	60,412	8,236	3.7%	1.1%
= Al Massaleh Real Estate Co.	MREC.KW	NM	0.40	0.00%	0.24	0.035	0.000	8.2	0.040	0.026	(5.4%)	0	0	1.5%	NM
▲ Arab Real Estate Co.	ARAB.KW	NM	0.27	0.00%	1.18	0.027	0.001	13.7	0.033	0.020	(9.2%)	3,160,050	83,978	22.5%	NM
▲ AL-Enma'a Real Estate Co.*	ENMA.KW	20.4	0.46	0.00%	0.64	0.046	0.001	20.7	0.079	0.037	(26.4%)	2,156,576	97,860	24.1%	2.3%
▲ Mabanee Co.	MABK.KW	23.4	1.53	2.06%	1.09	0.638	0.001	705.0	0.878	0.434	(25.3%)	516,250	329,311	17.3%	6.5%
= Injazzat Real Estate Development Co.	INJA.KW	NM	0.50	8.85%	0.20	0.077	0.000	26.6	0.091	0.061	(3.8%)	50,000	3,863	1.1%	NM
▼ Investors Holding Group Co.	INVK.KW	NM	1.08	0.00%	1.16	0.022	(0.008)	13.5	0.031	0.007	171.3%	25,776,014	712,686	234.0%	NM
▲ The Commercial Real Estate Co.	TIJK.KW	18.4	0.60	5.06%	0.53	0.097	0.001	171.7	0.103	0.083	3.7%	19,053,712	1,843,999	7.4%	3.3%
= Sanam Real Estate Co.	SANK.KW	NM	0.40	0.00%	0.38	0.030	0.000	3.7	0.043	0.027	(25.0%)	0	0	2.4%	NM
▲ A'ayan Real Estate Co.	AYRE.KW	NM	0.37	7.84%	0.58	0.063	0.004	26.1	0.080	0.048	(14.1%)	1,445,650	89,286	2.9%	NM
= Aqar Real Estate Investment Co.	AQAR.KW	6.5	0.55	6.74%	NA	0.064	0.000	15.7	0.089	0.058	(16.1%)	0	0	1.7%	8.5%
▲ Kuwait Real Estate Holding Co.	ALAQ.KW	NM	0.59	0.00%	0.53	0.025	0.001	4.7	0.034	0.022	(13.6%)	71,895	1,640	8.1%	NM
▲ MAZAYA Holding Co.	MAZA.KW	NM	0.51	0.00%	0.99	0.054	0.001	37.4	0.067	0.047	(8.1%)	973,478	52,015	15.2%	NM
= Tijara Real Estate & Investment Co.	TIJA.KW	14.3	0.38	5.01%	0.30	0.040	0.000	14.8	0.055	0.034	(20.2%)	0	0	0.2%	2.6%
▲ Al TAMEER Real Estate Investment Co.	AMAR.KW	NM	0.34	0.00%	0.94	0.021	0.000	4.9	0.034	0.013	(22.3%)	2,576,078	53,499	85.2%	NM
= Arkan Al-Kuwait Real Estate Co. *	ARKK.KW	9.2	0.64	9.36%	0.22	0.086	0.000	21.5	0.100	0.076	(3.8%)	0	0	9.0%	6.9%
= Al-Argan International Real Estate Co.	ARGK.KW	NM	0.27	5.80%	0.42	0.083	0.000	22.0	0.141	0.060	(20.9%)	0	0	0.4%	NM
▲ Abyaar Real Estate Development Co.	ABYR.KW	NM	0.22	0.00%	1.21	0.008	0.000	8.4	0.014	0.005	(2.6%)	21,016,094	160,532	59.2%	NM
= Munshaat Real Estate Projects Co.	MUNS.KW	NM	0.51	0.00%	0.66	0.065	0.000	20.9	0.085	0.045	(12.2%)	52,000	3,380	6.2%	NM
▲ First Dubai For Real Estate Development	FIRST.KW	NM	0.55	0.00%	1.44	0.041	0.001	41.0	0.055	0.027	15.2%	2,590,797	106,054	28.4%	0.6%
▼ Kuwait Business Town Real Estate Co.	KBTK.KW	10.4	0.23	0.00%	1.05	0.026	(0.001)	16.1	0.046	0.022	(41.8%)	2,639,326	68,379	35.7%	2.2%
= Real Estate Asset Management Co.	REAM.KW	NM	1.48	0.00%	0.08	0.204	0.000	22.4	0.204	0.060	132.1%	0	0	0.1%	NM
▲ MENA Real Estate Co. *	MENK.KW	NM	0.20	0.00%	0.98	0.028	0.000	3.8	0.043	0.021	(32.4%)	1,049,013	29,458	88.9%	NM
= Al Mudon International Real Estate Co.	ALMK.KW	NM	0.12	0.00%	0.86	0.016	0.000	1.6	0.029	0.015	(35.1%)	0	0	23.7%	NM
= Real Estate Trade Centers Co.	MARA.KW	15.6	0.16	0.00%	0.33	0.027	0.000	3.8	0.050	0.018	16.4%	6,102	157	27.2%	1.0%
▲ Kuwait Remal Real Estate Co.	REMAK.KW	NM	0.32	0.00%	0.86	0.021	0.002	6.4	0.027	0.013	(14.8%)	1,694,990	36,050	18.1%	NM
▲ Mashaer Holding Co.	MASHAER.KW	NM	0.52	8.49%	0.53	0.059	0.000	10.6	0.086	0.048	(24.1%)	10,334	608	31.6%	NM
= Effect Real Estate Co.	EFFECT.KW	NM	0.29	0.00%	0.44	0.021	0.000	1.7	N/A	N/A	0.0%	0	0	0.0%	NM
= Ajwan Gulf Real Estate Co.	AJWN.KW	NM	0.19	0.00%	0.60	0.011	0.000	2.2	0.016	0.009	(28.7%)	0	0	116.7%	NM
▼ Al Masaken Intl. Real Estate Dev. Co.	MASKN.KW	NM	0.32	0.00%	0.14	0.027	(0.001)	2.7	0.074	0.027	(38.4%)	900	24	0.6%	0.4%
= Dalqan Real Estate Co.	DALQ.KW	62.7	2.37	0.00%	NA	0.350	0.000	15.8	0.385	0.333	0.0%	0	0	0.0%	3.8%
▼ Dar Al Thuraya Real Estate Co.	THURY.KW	NM	1.08	0.00%	0.02	0.114	(0.009)	16.7	0.190	0.040	62.6%	26,752	2,952	2.1%	0.2%
▲ Osos Holding Group Co.	OSOS.KW	NM	0.87	7.02%	0.25	0.095	0.001	10.0	0.118	0.084	(5.1%)	8	1	7.0%	NM
▼ KFH Capital REIT	BAITAKREIT.KW	NA	NA	0.00%	NA	1.035	(0.004)	24.4	1.142	0.988	NA	19,401	19,959	4.0%	NA
Real Estate		NM	0.70	2.53%				1,928.1			(14.7%)	89,610,730	3,972,111		NM

Boursa Kuwait Daily Bulletin

Sunday, September 13, 2020

Company	Reuters Ticker	Valuation Multiples				Price (KWD)		MKT Cap (KWD Mn.)	52 Weeks High (KWD)	52 Weeks Low (KWD)	YTD-20 Return #	Daily Trading Data		YTD-20 Capital Turnover	ROE
		Trailing P/E (X)	Trailing P/BV (X)	Dividend Yield	Beta	Closing	DTD Change					Volume (Shrs.)	Value (KWD)		
= Kuwait Investment Co.	KINV.KW	NM	0.71	12.22%	0.71	0.122	0.000	67.3	0.172	0.095	(18.7%)	936,677	113,960	23.8%	NM
= Commercial Facilities Co.	FACI.KW	NM	0.70	9.21%	0.52	0.185	0.000	99.3	0.235	0.179	(14.7%)	0	0	4.4%	NM
= Int'l Financial Advisors Co.	IFIN.KW	NM	0.99	0.00%	1.32	0.031	0.000	8.2	0.060	0.027	(42.3%)	0	0	32.0%	NM
▲ National Investment Co.	NINV.KW	NM	0.85	5.29%	1.24	0.155	0.005	135.8	0.155	0.080	12.3%	9,632,402	1,495,921	34.6%	NM
▼ Kuwait Projects Co.(Holding)	KPRO.KW	5.1	1.39	6.56%	0.57	0.150	(0.001)	300.0	0.230	0.147	(30.6%)	1,133,604	171,043	9.5%	27.3%
▲ Coast Invest. & Development Co.	COAS.KW	NM	0.43	0.00%	1.33	0.035	0.001	21.8	0.045	0.026	(13.0%)	327,553	11,278	18.5%	NM
▼ The Securities House Co.	SECH.KW	NM	0.51	0.00%	1.14	0.045	(0.000)	24.8	0.063	0.027	(1.8%)	3,216,027	143,264	59.5%	NM
▼ Arzan Financial Group For Fin. & Invest.	ARZA.KW	NM	0.52	0.00%	1.03	0.057	(0.001)	45.8	0.064	0.022	140.5%	36,324,438	2,108,772	199.4%	NM
▲ Kuwait Financial Centre	MARKZ.KW	NM	0.46	6.24%	0.77	0.080	0.000	38.5	0.121	0.070	(24.4%)	531,856	42,531	25.0%	NM
▲ Kuwait & M.E. Financial Inv. Co.	KMEF.KW	4.3	1.37	0.00%	0.61	0.121	0.007	31.9	0.138	0.063	35.2%	232,170	27,224	19.8%	32.2%
▲ First Investment Co.	OLAK.KW	NM	0.44	0.00%	1.02	0.031	0.003	19.9	0.045	0.022	(11.3%)	11,866,287	353,900	172.7%	NM
= Al-Mal Investment Co.	MALK.KW	NM	0.39	0.00%	1.20	0.009	0.000	2.9	0.016	0.008	(6.1%)	16,114,531	152,794	88.7%	NM
▼ Gulf Investment House	GIHK.KW	NM	1.74	0.00%	1.00	0.096	(0.004)	62.2	0.100	0.038	48.8%	717,730	70,429	19.9%	NM
▲ A'ayan Leasing & Investment Co.	AAYA.KW	NM	1.26	0.00%	1.24	0.100	0.018	81.2	0.084	0.032	113.5%	44,715,566	4,100,218	135.0%	NM
▼ Bayan Investment Co.	BAYK.KW	NM	0.54	0.00%	0.85	0.047	(0.001)	18.5	0.053	0.031	23.4%	40,250	1,840	5.7%	NM
▼ Osoul Investment Co.	OSUL.KW	NM	0.75	13.57%	0.44	0.081	(0.002)	12.6	0.121	0.070	7.3%	214,509	17,319	25.7%	NM
▲ Kuwait Finance & Investment Co.	KFSK.KW	NM	0.40	0.00%	0.30	0.046	0.001	14.7	0.058	0.038	(8.1%)	462,910	20,163	9.2%	NM
▲ Kamco Investment Co.	KAMC.KW	NM	0.52	6.76%	0.38	0.074	0.003	25.3	0.111	0.060	(17.8%)	3,071,104	227,868	13.2%	NM
▼ National International Holding Co.	NIHK.KW	7.7	0.37	6.98%	0.67	0.063	(0.002)	14.3	0.081	0.049	(14.1%)	60,000	3,780	3.9%	4.8%
▲ UniCap Investment and Finance	UNICAP.KW	NM	0.55	0.00%	0.65	0.042	0.002	9.9	0.057	0.035	(24.5%)	663,430	26,922	9.8%	NM
▲ Al Madar Finance & Investment Co.	MADR.KW	17.8	0.87	5.53%	0.34	0.088	0.001	18.7	0.148	0.062	(5.6%)	283,094	24,565	20.0%	4.9%
= Al-Deera Holding	DEER.KW	NM	1.92	0.00%	0.83	0.016	0.000	3.2	0.022	0.011	(20.0%)	0	0	6.1%	NM
▲ Al Salam Group Holding Co.	SAGH.KW	33.5	0.25	0.00%	1.27	0.029	0.003	7.9	0.033	0.018	(0.3%)	39,206,478	1,160,623	228.1%	0.8%
▲ Ektitab Holding Co.	EKTT.KW	NM	0.39	0.00%	1.01	0.016	0.001	5.1	0.017	0.010	6.7%	10,061,001	162,408	45.8%	NM
▲ Al Madina For Finance & Investment Co.	MADI.KW	NM	0.50	0.00%	1.22	0.015	0.001	5.9	0.019	0.009	(2.7%)	20,602,743	310,015	157.5%	NM
▲ NOOR Financial Investment Co.	NOOR.KW	7.8	1.19	3.56%	1.24	0.168	0.004	69.4	0.184	0.076	41.2%	651,624	107,257	52.5%	15.4%
= Tamdeen Investment Co.	TAMI.KW	NM	0.60	3.56%	0.33	0.336	0.000	115.9	0.400	0.199	(2.6%)	0	0	0.3%	NM
= Kuwait Syrian Holding Co.	KSHC.KW	NM	0.23	0.00%	0.73	0.026	0.000	4.5	0.043	0.022	(19.0%)	21,021	536	25.1%	NM
▲ Asiya Capital Investment Co.	ASIYA.KW	NM	0.39	0.00%	0.52	0.034	0.003	27.4	0.041	0.029	(16.4%)	467,537	15,155	1.1%	NM
= Gulf North Africa Holding Co.	GNAH.KW	NM	0.75	0.00%	1.10	0.056	0.000	8.4	0.062	0.052	(9.4%)	0	0	4.0%	NM
= Amwal International Investment Co.	AMWA.KW	NM	0.65	0.00%	0.39	0.034	0.000	6.2	0.053	0.030	14.3%	0	0	0.0%	NM
▲ Alimtiar Investment Group	ALIMK.KW	NM	0.54	8.10%	0.95	0.095	0.006	107.4	0.137	0.071	(24.8%)	11,162,623	1,029,278	37.5%	NM
= Tamkeen Holding Co.	TAMKE.KW	NM	0.05	0.00%	NA	0.005	0.000	0.3	N/A	N/A	0.0%	0	0	0.0%	NM
▲ Manazel Holding Co.	MANK.KW	9.5	0.71	0.00%	1.38	0.033	0.001	14.2	0.048	0.021	(15.8%)	4,379,208	144,540	41.8%	7.5%
= National Industries Group	NIND.KW	NM	0.76	5.95%	1.42	0.168	0.000	239.9	0.247	0.121	(30.3%)	3,221,395	542,296	38.4%	NM
▼ Warba Capital Holding Co.	WARBACAP.KW	NM	0.55	0.00%	0.70	0.047	(0.000)	4.7	0.070	0.045	(27.0%)	30,000	1,369	8.7%	NM
= Arabi Holding Group Co.	AGHC.KW	NM	1.23	0.00%	0.15	0.198	0.000	34.2	0.337	0.079	(27.7%)	0	0	3.1%	NM
▼ Privatization Holding Co.	KPPC.KW	NM	0.33	0.00%	0.79	0.042	(0.000)	25.5	0.059	0.037	(15.6%)	1,000	42	5.5%	NM
= Credit Rating & Collection Co.	TAHS.KW	NM	1.03	0.00%	NA	0.032	0.000	5.3	0.035	0.019	60.0%	0	0	0.2%	NM
= Egypt Kuwait Holding Co.	ECHK.KW	12.1	2.53	0.00%	0.16	0.370	0.000	379.0	0.500	0.318	(17.8%)	0	0	0.0%	20.9%
▲ GFH Financial Group	GFH.KW	18.9	1.01	7.72%	0.87	0.052	0.001	265.5	0.074	0.042	(24.5%)	963,299	49,134	1.5%	5.3%
▲ Inovent	INOV.KW	9.0	0.49	6.80%	0.71	0.070	0.002	21.1	0.072	0.044	9.7%	446,500	30,831	5.6%	5.4%
▼ Al Bareeq Holding	BAREEQ.KW	33.8	1.44	0.00%	0.03	0.088	(0.005)	66.0	0.110	0.092	(12.5%)	100	9	1.7%	4.3%
▲ Amar For Finance and Leasing Co.	AMARF.KW	NM	0.63	0.00%	0.07	0.053	0.001	10.6	0.064	0.037	39.5%	59,790	2,960	11.0%	NM
▼ Al-Manar Financing & Leasing Co.	ALMANAR.KW	NM	0.47	0.00%	NA	0.049	(0.000)	15.1	0.060	0.037	(5.4%)	500	25	6.7%	NM
Financial Services		NM	0.86	4.15%				2,496.4			(9.8%)	221,818,957	12,670,269		NM

Boursa Kuwait Daily Bulletin

Sunday, September 13, 2020

Company	Reuters Ticker	Valuation Multiples				Price (KWD)			MKT Cap (KWD Mn.)	52 Weeks High (KWD)	52 Weeks Low (KWD)	YTD-20 Return #	Daily Trading Data		YTD-20 Capital Turnover	ROE
		Trailing P/E (X)	Trailing P/BV (X)	Dividend Yield	Beta	Closing	DTD Change						Volume (Shrs.)	Value (KWD)		
▲ Automated Systems Co.	ASCK.KW	NM	0.61	5.37%	0.13	0.075	0.004		7.4	0.086	0.051	5.2%	12,000	846	1.8%	NM
Technology		NM	0.61	5.37%					7.4			5.2%	12,000	846		NM
= Shamal Az-Zour Al-Oula Power and Water Co.	AZNOULA.KW	29.1	4.67	0.00%	2.25	0.325	0.000		357.5	0.500	0.297	N/A	2,057,976	667,884	26.6%	16.1%
Utilities		29.1	4.67	0.00%					357.5			N/A	2,057,976	667,884		16.1%
Boursa Kuwait		27.1	1.38	3.98%					31,676.8			(12.84%)	479,069,246	42,492,328		5.1%

Year-to-Date 2020 Top Movers & Most Active Stocks

YTD Top % Gainers	Close (KWD)	Percent Change
Investors Holding Group Co.	0.022	171.3%
Arzan Financial Group For Fin. & Invest.	0.057	140.5%
Real Estate Asset Management Co.	0.204	132.1%
A'ayan Leasing & Investment Co.	0.100	113.5%
Dar Al Thuraya Real Estate Co.	0.114	62.6%
YTD Most Active by Volume		
Ahli United Bank - Bahrain	0.221	3,460,701,183
Kuwait Finance House	0.626	1,728,246,397
Arzan Financial Group For Fin. & Invest.	0.057	1,600,835,803
Gulf Petroleum Investment	0.021	1,576,511,752
Investors Holding Group Co.	0.022	1,457,626,221

YTD Top % Losers	Close (KWD)	Percent Change
IFA Hotels & Resorts Co.	0.024	(57.3%)
Jazeera Airways Co.	0.577	(47.5%)
Int'l Financial Advisors Co.	0.031	(42.3%)
ALAFCO Aviation Lease & Finance Co.	0.158	(41.9%)
Kuwait Business Town Real Estate Co.	0.026	(41.8%)
YTD Most Active by Value		
Kuwait Finance House	0.626	1,128,920,071
National Bank of Kuwait	0.866	884,092,229
Ahli United Bank - Bahrain	0.221	749,969,661
Zain	0.578	393,274,024
Agility (PWC Logistics)	0.625	314,930,261

* Different Fiscal Year Company

Disclaimer & Important Disclosures

Kamco Invest is authorized and fully regulated by the Capital Markets Authority ("CMA, Kuwait") and partially regulated by the Central Bank of Kuwait ("CBK").

This document is provided for informational purposes only. Nothing contained in this document constitutes investment, an offer to invest, legal, tax or other advice or guidance and should be disregarded when considering or making investment decisions. In preparing this document, Kamco Invest did not take into account the investment objectives, financial situation and particular needs of any particular person. Accordingly, before acting on this document, investors should independently evaluate the investments and strategies referred to herein and make their own determination of whether it is appropriate in light of their own financial circumstances and objectives. The entire content of this document is subject to copyright with all rights reserved. This research and the information contained herein may not be reproduced, distributed or transmitted in Kuwait or in any other jurisdiction to any other person or incorporated in any way into another document or other material without our prior written consent.

Analyst Certification

Each of the analysts identified in this report, if any and where applicable, certifies, with respect to the sector, companies or securities that the individual analyses, that (1) the views expressed in this report reflect his or her personal views about all of the subject companies and securities and (2) no part of his or her compensation was, is or will be directly or indirectly dependent on the specific recommendations or views expressed in this report.

Kamco Invest Ratings

Kamco Invest research is based on the analysis of regional and country economics, industries and company fundamentals. Kamco Invest company research reflects a long-term (12-month) target price for a company or stock. The ratings bands are:

* **Outperform:** Target Price represents expected returns >= 10% in the next 12 months

* **Neutral:** Target Price represents expected returns between -10% and +10% in the next 12 months

* **Underperform:** Target Price represents an expected return of <-10% in the next 12 months

In certain circumstances, ratings may differ from those implied by a fair value target using the criteria above. Kamco Invest policy is to maintain up-to-date fair value targets on the companies under its coverage, reflecting any material changes to the analyst's outlook on a company. Share price volatility may cause a stock to move outside the rating range implied by Kamco Invest's fair value target. Analysts may not necessarily change their ratings if this happens, but are expected to disclose the rationale behind their view to Kamco Invest clients.

Any terms and conditions proposed by you which are in addition to or which conflict with this Disclaimer are expressly rejected by Kamco Invest and shall be of no force or effect. The information contained in this document is based on current trade, statistical and other public information we consider reliable. We do not represent or warrant that such information is fair, accurate or complete and it should not be relied upon as such. Kamco Invest has no obligation to update, modify or amend this document or to otherwise notify a recipient thereof in the event that any opinion, forecast or estimate set forth herein, changes or subsequently becomes inaccurate. The information is provided for informational uses only and is not intended for trading purposes. The information on publications does not give rise to any legally binding obligation and/or agreement, including without limitation any obligation to update such information. You shall be responsible for conducting your own investigation and analysis of the information contained or referred to in this document and of evaluating the merits and risks involved in the securities forming the subject matter of this or other such document. Moreover, the provision of certain data/information in the publication may be subject to the terms and conditions of other agreements to which Kamco Invest is a party.

Nothing in this document should be construed as a solicitation or offer, or recommendation, to acquire or dispose of any investment or to engage in any other transaction, or to provide any investment advice or service. This document is directed at Professional Clients and not Retail Clients within the meaning of CMA rules. Any other persons in receipt of this document must not rely upon or otherwise act upon it. Entities and individuals

Kamco Investment Company (DIFC) Limited ("Kamco Invest DIFC"), Office 205, Level 2, Gate Village 1, Dubai International Financial Centre, a wholly owned subsidiary of Kamco Investment Company KSC (Public), is regulated by the Dubai Financial Services Authority (DFSA). Kamco Invest DIFC may only undertake the financial services activities that fall within the scope of its existing DFSA licence. The information in this document may be distributed by Kamco Invest DIFC on behalf of Kamco Investment Company KSC (Public). This document is intended for Professional Clients or Market Counterparties only as defined by the DFSA, and no other person should act upon it.

This document may not be distributed in Saudi Arabia except to such persons as are permitted under the Offers of Securities Regulations issued by the Capital Market Authority. The Capital Market Authority does not make any representation as to the accuracy or completeness of this document, and expressly disclaims any liability whatsoever for any loss arising from, or incurred in reliance upon, any part of this document. The recipients of this document hereby should conduct their own due diligence on the accuracy of the information relating to the contents of this document. If you do not understand the contents of this document you should consult an authorized financial advisor.

Risk Warnings

Any prices, valuations or forecasts are indicative and are not intended to predict actual results, which may differ substantially from those reflected. The value of an investment may go up as well as down. The value of and income from any investment may fluctuate from day to day as a result of changes in relevant economic markets (including, without limitation, foreseeable or unforeseeable changes in interest rates, foreign exchange rates, default rates, prepayment rates, political or financial conditions, etc.).

Past performance is not indicative of future results. Any opinions, estimates, valuations or projections (target prices and ratings in particular) are inherently imprecise and a matter of judgment. They are statements of opinion and not of fact, based on current expectations, estimates and projections, and rely on beliefs and assumptions. Actual outcomes and returns may differ materially from what is expressed or forecasted. There are no guarantees of future performance. Certain transactions, including those involving futures, options, and other derivatives, give rise to substantial risk and are not suitable for all investors. This document does not propose to identify or to suggest all of the risks (direct or indirect) which may be associated with the investments and strategies referred to herein.

Conflict of Interest

Kamco Invest and its affiliates provide full investment banking services, and they and their directors, officers and employees, may take positions which conflict with the views expressed in this document. Salespeople, traders, and other professionals of Kamco Invest may provide oral or written market commentary or trading strategies to our clients and our proprietary trading desks that reflect opinions that are contrary to the opinions expressed in this document. Our asset management area, our proprietary trading desks and investing businesses may make investment decisions that are inconsistent with the recommendations or views expressed in this document. Kamco Invest may have or seek investment banking or other business relationships for which it will receive compensation from the companies that are the subject of this document. Facts and views presented in this document have not been reviewed by, and may not reflect information known to, professionals in other Kamco Invest business areas, including investment banking personnel. United Gulf Bank, Bahrain owns majority of Kamco Invest's shareholding and this ownership may create, or may create the appearance of, conflicts of interest.

No Liability & Warranty

Kamco Invest makes neither implied nor expressed representations or warranties and, to the fullest extent permitted by applicable law, we hereby expressly disclaim any and all express, implied and statutory representations and warranties of any kind, including, without limitation, any warranty as to accuracy, timeliness, completeness, and fitness for a particular purpose and/or non-infringement. Kamco Invest will accept no liability in any event including (without limitation) your reliance on the information contained in this document, any negligence for any damages or loss of any kind, including (without limitation) direct, indirect, incidental, special or consequential damages, expenses or losses arising out of, or in connection with your use or inability to use this document, or in connection with any error, omission, defect, computer virus or system failure, or