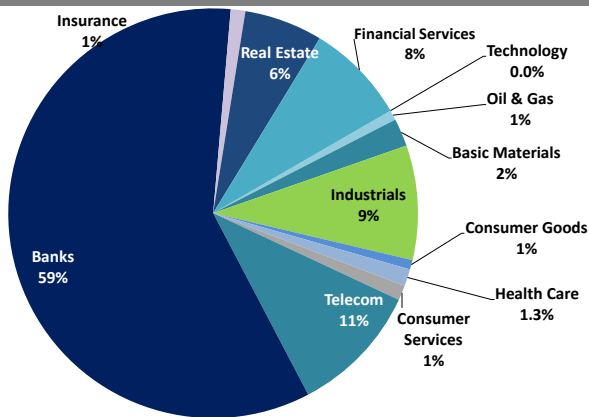


Boursa Kuwait Daily Report

September 9, 2020

Sector Weight by Market Cap



Top 10 Companies by Market Capitalization

Company Name	Market Cap. (Mn KWD)	P/E (X)	ROE* (%)
1- National Bank of Kuwait	5,870.6	19.4	9.8%
2- Kuwait Finance House	4,788.7	23.9	10.7%
3- Zain	2,475.1	12.2	16.6%
4- Ahli United Bank - Bahrain	2,132.5	10.8	16.6%
5- Boubyan Bank	1,943.1	38.2	10.3%
6- Agility (PWC Logistics)	1,263.1	20.7	5.5%
7- Commercial Bank of Kuwait	956.2	NM	NM
8- Mabane Co.	701.7	23.3	6.5%
9- Gulf Bank	646.2	12.6	8.6%
10- Ahli United Bank - Kuwait	593.4	14.2	9.7%
Total	21,371	18.89	10.2%

*: ROE is calculated based on TTM 1H-2020 net profit & shareholders' equity as of 30-June-20

Top Movers and Most Active Stocks

Today's Top % Gainers	Close (KWD)	Change (KWD)	Percent Change
Investors Holding Group Co.	0.023	0.006	36.4%
Ajial Real Estate Entertainment Co.	0.142	0.007	5.2%
Burgan Co. for Drilling, Tdg. & Maint.	0.087	0.004	4.8%
National Industries Group	0.169	0.007	4.3%
Specialities Group Holding Co.	0.061	0.003	4.3%

Today's Top % Losers	Close (KWD)	Change (KWD)	Percent Change
Arzan Financial Group For Fin. & Invest.	0.053	(0.006)	(9.9%)
Credit Rating & Collection Co.	0.032	(0.003)	(9.1%)
Kuwait Real Estate Holding Co.	0.023	(0.002)	(6.5%)
Umm Al-Qaiwain General Investments Co.	0.087	(0.005)	(4.9%)
Metal & Recycling Co.	0.043	(0.002)	(4.9%)

Today's Most Active by Volume	Close (KWD)	Percent Change	Volume (Shares)
Arzan Financial Group For Fin. & Invest.	0.053	(9.9%)	32,776,155
A'ayan Leasing & Investment Co.	0.080	1.9%	22,734,086
Ahli United Bank - Bahrain	0.219	(2.2%)	19,484,521
Gulf Petroleum Investment	0.021	(2.8%)	18,301,626
Investors Holding Group Co.	0.023	36.4%	18,069,336

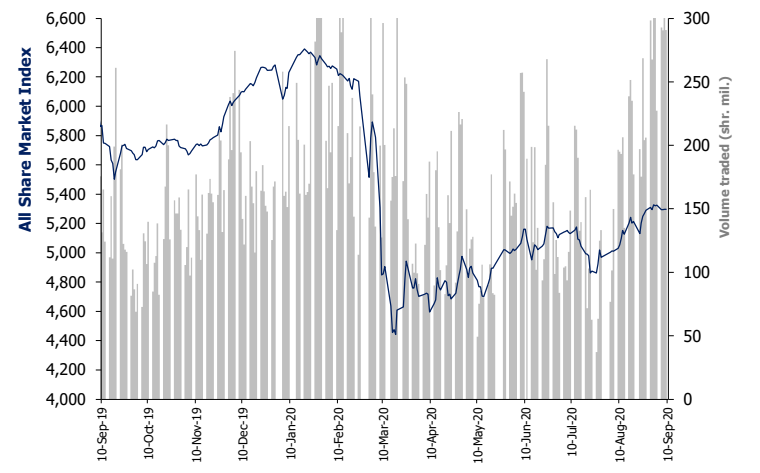
Source: Boursa Kuwait, Kamco Invest Research

Market Capitalization - Sector Returns

	Market Cap. (KWD Mn)	DTD %	DTD % Chg	MTD % Chg	YTD % Chg
Boursa Kuwait	31,393.3	▼	(0.0%)	0.2%	(13.6%)
Oil & Gas	243.4	▲	0.2%	0.8%	(5.6%)
Basic Materials	683.6	▼	(0.3%)	(1.6%)	(15.4%)
Industrials	2,797.9	▼	(0.2%)	1.6%	(15.0%)
Consumer Goods	235.2	▼	(2.7%)	(4.7%)	19.1%
Health Care	411.2	=	0.0%	0.0%	(6.3%)
Consumer Services	369.0	▼	(0.3%)	0.3%	(33.1%)
Telecommunications	3,219.5	▼	(0.0%)	(1.9%)	(5.8%)
Banks	18,329.6	▼	(0.0%)	(0.5%)	(16.7%)
Insurance	359.1	▲	0.8%	2.1%	3.4%
Real Estate	1,918.7	▲	0.3%	3.2%	(15.1%)
Financial Services	2,464.0	▲	0.2%	5.2%	(11.0%)
Technology	6.9	▼	(1.3%)	0.9%	(2.7%)
Utilities	355.3	▼	-0.6%	0.9%	N/A

Market Breadth	▲ 46	▼ 65	■ 63		
Benchmark Return	Closing	DTD	DTD	MTD	YTD
	Value	Chg	% Chg	% Chg	% Chg
Premier Market Index	5,812.94	(2.8)	(0.0%)	(0.7%)	(16.7%)
Main 50 Index	4,288.21	(1.5)	(0.0%)	2.5%	(14.0%)
Main Market Index	4,274.80	0.4	0.0%	2.1%	(12.9%)
All Share Market Index	5,295.75	(1.7)	(0.0%)	0.0%	(15.7%)
Market Cap (KWD Mn)	31,393.34	(8.3)	(0.0%)	0.2%	(13.6%)

Index Performance relative to Volume



Market Trading Data and Volatility

Trading Indicators	Today's Value	DTD Chg	DTD % Chg	Average Daily YTD 2020	Average Daily YTD 2019
Volume (Shrs Mn)	290.9	(55.9)	(16.1%)	179.0	88.6
Value Traded (KWD Mn)	33.4	2.4	7.8%	34.6	16.9
No. of Trades	10,427	(550)	(5.01%)	8,268	3,810

Today's Most Active by Value	Close (KWD)	Percent Change	Value (KWD)
National Bank of Kuwait	0.857	0.7%	4,336,022
Ahli United Bank - Bahrain	0.219	(2.2%)	4,302,695
Kuwait Finance House	0.624	0.0%	3,616,862
National Industries Group	0.169	4.3%	2,323,088
A'ayan Leasing & Investment Co.	0.080	1.9%	1,838,913

Boursa Kuwait - Premier Market

Wednesday, September 9, 2020

	Premier Market Stocks	Closing Price			Market Capitalization			Valuation Multiples				ROE	YTD-20 Price Return	YTD-20 Trading Indicators	
		KWD	DTD Chg. (KWD)	D-T-D Return	KWD Mn	Weight in Premier Index	Weight in Boursa Kuwait	P/E (X)	P/BV (X)	Yield	Beta			Volume (Mn Shrs)	Value (KWD Mn)
▲	National Bank of Kuwait	0.857	0.006	0.7%	5,871	25.6%	18.7%	19.4	1.91	3.8%	1.28	9.8%	(15.9%)	1,038.25	875.49
▲	Gulf Bank	0.212	0.001	0.5%	646	2.8%	2.1%	12.6	1.08	4.9%	1.13	8.6%	(30.0%)	1,077.83	242.52
▼	Kuwait International Bank	0.177	(0.001)	(0.6%)	200	0.9%	0.6%	26.2	0.77	3.4%	1.00	3.0%	(32.2%)	1,061.23	203.79
=	Burgan Bank	0.198	0.000	0.0%	520	2.3%	1.7%	8.3	0.73	6.0%	1.05	8.8%	(34.9%)	381.10	83.88
=	Kuwait Finance House	0.624	0.000	0.0%	4,789	20.9%	15.3%	23.9	2.57	2.9%	1.42	10.7%	(15.4%)	1,712.77	1,119.22
▲	Boubyan Bank	0.596	0.002	0.3%	1,943	8.5%	6.2%	38.2	3.92	1.3%	1.05	10.3%	5.1%	176.42	94.51
▼	Kuwait Projects Co. (Holding)	0.151	(0.001)	(0.7%)	302	1.3%	1.0%	5.1	1.39	6.5%	0.57	27.3%	(30.1%)	186.80	31.07
=	Mabane Co.	0.635	0.000	0.0%	702	3.1%	2.2%	23.3	1.52	2.1%	1.09	6.5%	(25.6%)	190.24	124.31
▲	National Industries Group (Holding)	0.169	0.007	4.3%	241	1.1%	0.8%	NM	0.76	5.9%	1.42	NM	(29.9%)	532.60	97.20
▼	Boubyan Petrochemical Co.	0.537	(0.002)	(0.4%)	287	1.3%	0.9%	24.3	1.29	6.3%	0.73	5.3%	(19.6%)	68.45	38.71
▼	Qurain Petrochemicals Industries Co.	0.274	(0.001)	(0.4%)	301	1.3%	1.0%	11.7	0.71	5.5%	0.76	6.1%	(11.6%)	128.43	33.57
▲	Agility Public Warehousing Co.	0.623	0.002	0.3%	1,263	5.5%	4.0%	20.7	1.14	0.7%	1.47	5.5%	(12.4%)	477.83	312.11
▼	Mobile Telecommunications Co.	0.572	(0.001)	(0.2%)	2,475	10.8%	7.9%	12.2	2.02	5.8%	1.39	16.6%	(4.7%)	731.72	390.80
▼	Human Soft Holding Co.	2.623	(0.011)	(0.4%)	321	1.4%	1.0%	12.2	3.64	7.0%	0.47	29.9%	(12.9%)	39.87	109.93
▼	Ahli United Bank (B.S.C)	0.219	(0.005)	(2.2%)	2,132	9.3%	6.8%	10.8	1.80	8.2%	1.11	16.6%	(24.8%)	3,450.25	747.66
▼	Warba Bank	0.206	(0.005)	(2.4%)	324	1.4%	1.0%	NM	1.78	0.0%	0.98	NM	(21.3%)	527.88	112.25
▼	Mezzan Holding Co.	0.613	(0.019)	(3.0%)	191	0.8%	0.6%	29.6	1.73	2.4%	0.46	5.8%	22.6%	56.21	30.99
▲	Integrated Holding Co.	0.388	0.002	0.5%	85	0.4%	0.3%	32.3	1.40	7.7%	0.46	4.3%	(29.6%)	54.02	24.76
▼	Shamal Az-Zour Al-Oula Power and Water	0.323	(0.002)	(0.6%)	355	1.5%	1.1%	28.9	4.64	0.0%	2.21	16.1%	NA	286.78	99.53
Subtotal- Premier Market Stocks		5,812.94	(2.80)	-0.05%	22,949	100%	73%	18.4	1.81	3.94%		9.8%	-15.7%	12,178.69	4,772.30
Remaining of the Market					8,444		27%	(108.2)	0.82	4.22%		-0.8%		17,180.17	904.30

Source: Kamco Research

Boursa Kuwait Daily Bulletin

Wednesday, September 9, 2020

Company	Reuters Ticker	Valuation Multiples				Price (KWD)		MKT Cap (KWD Mn.)	52 Weeks High (KWD)	52 Weeks Low (KWD)	YTD-20 Return #	Daily Trading Data		YTD-20 Capital Turnover	ROE
		Trailing P/E (X)	Trailing P/BV (X)	Dividend Yield	Beta	Closing	DTD Change					Volume (Shrs.)	Value (KWD)		
▼ Senergy Holding Co.	SENE.KW	NM	0.34	0.00%	1.13	0.017	(0.000)	3.3	0.027	0.014	(23.7%)	392,889	6,679	25.7%	NM
= Independent Petroleum Group	IPGK.KW	14.1	0.98	5.62%	0.28	0.430	0.000	96.6	0.497	0.375	(10.8%)	0	0	0.3%	7.0%
= National Petroleum Services Co.	NAPS.KW	11.5	2.70	6.79%	0.22	1.000	0.000	100.0	1.389	0.903	(14.5%)	495	500	0.2%	23.4%
▼ The Energy House Co.	ENER.KW	NM	0.69	0.00%	0.94	0.022	(0.000)	16.2	0.036	0.014	(5.3%)	57,302	1,234	5.8%	NM
▼ Gulf Petroleum Investment	GPIK.KW	NM	0.15	0.00%	1.07	0.021	(0.001)	6.2	0.025	0.012	4.5%	18,301,626	389,993	513.3%	NM
▲ Burgan Co. for Drilling, Tdg. & Maint. *	ABAR.KW	16.0	0.32	0.00%	NA	0.087	0.004	21.1	0.098	0.060	8.5%	300	26	0.1%	2.0%
Oil & Gas		29.0	0.88	5.02%				243.4			(5.6%)	18,752,612	398,431		3.1%
▲ Kuwait Foundry Co.	KFDC.KW	37.6	0.88	6.15%	0.66	0.244	0.002	17.6	0.510	0.192	(27.2%)	1,000	246	2.2%	2.3%
▼ Boubyan Petrochemicals Co.*	BPCC.KW	24.3	1.29	6.34%	0.73	0.537	(0.002)	287.2	0.800	0.395	(19.6%)	99,505	53,525	12.8%	5.3%
= Al Kout for Industrial Projects Co.	ALKK.KW	27.8	2.84	6.50%	0.02	0.769	0.000	77.6	0.850	0.769	(9.5%)	0	0	0.0%	10.2%
▼ Qurain Petrochemical Industries Co. *	ALQK.KW	11.7	0.71	5.53%	0.76	0.274	(0.001)	301.2	0.341	0.163	(11.6%)	576,198	156,755	11.7%	6.1%
Basic Materials		16.7	0.99	5.99%				683.6			(15.4%)	676,703	210,526		5.9%
▲ Specialities Group Holding Co.	SPEC.KW	11.2	0.34	0.00%	0.39	0.061	0.003	10.0	0.078	0.050	(20.6%)	55,500	3,355	25.2%	3.0%
= Kuwait Cement Co.	KCEM.KW	NM	0.73	2.79%	0.46	0.174	0.000	127.6	0.271	0.144	(29.3%)	346,040	59,862	7.7%	NM
▼ Gulf Cable & Electrical Ind. Co.	CABL.KW	36.3	0.93	5.57%	0.91	0.718	(0.017)	150.7	0.737	0.390	47.1%	663,419	479,005	40.7%	2.6%
▼ Heavy Eng'g Ind. & Shipbuilding Co.	SHIP.KW	6.1	0.99	8.15%	0.60	0.368	(0.002)	66.3	0.419	0.298	(9.1%)	72,000	26,338	22.8%	16.2%
▲ Kuwait Portland Cement Co.	PCEM.KW	NM	1.29	5.08%	0.46	0.788	0.014	79.0	1.210	0.683	(19.8%)	2,600	2,016	5.6%	0.9%
= Shuaiba Industrial Co.	PAPE.KW	25.1	0.73	3.79%	0.12	0.130	0.000	13.1	0.180	0.122	(16.1%)	0	0	0.6%	2.9%
▼ Metal & Recycling Co.	MRCK.KW	NM	0.51	0.00%	0.21	0.043	(0.002)	5.0	0.070	0.020	(14.2%)	1,000	43	1.8%	NM
= ACICO Industries Co.	ACIC.KW	NM	0.39	5.29%	0.37	0.099	0.000	29.9	0.144	0.081	(25.6%)	0	0	5.6%	NM
= Hilal Cement Co.	HCCCK.KW	NM	0.89	15.97%	0.11	0.094	0.000	9.5	0.126	0.063	(6.1%)	0	0	0.5%	NM
▼ National Industries Co.	NIBM.KW	NM	0.72	6.26%	0.15	0.154	(0.002)	57.4	0.175	0.143	(6.7%)	1,000	155	0.3%	NM
▲ Equipment Holding Co.	EQUI.KW	NM	0.40	0.00%	1.03	0.018	0.000	2.4	0.024	0.013	(20.1%)	304,850	5,343	23.0%	NM
= National Co. for Consumer Industries	NCCI.KW	57.3	0.57	0.00%	NA	0.052	0.000	4.7	0.100	0.010	(5.1%)	0	0	0.4%	1.0%
▲ Salbookh Trading Co.	SALB.KW	NM	0.52	0.00%	0.61	0.035	0.001	3.7	0.051	0.026	(30.1%)	785,277	26,891	24.7%	NM
▲ Agility (PWC Logistics)	AGLT.KW	20.7	1.14	0.66%	1.47	0.623	0.002	1,263.1	0.748	0.357	(12.4%)	715,305	444,454	23.6%	5.5%
= Educational Holding Group*	EDUK.KW	8.9	1.65	19.81%	0.45	0.300	0.000	73.6	0.475	0.228	(31.7%)	3,500	1,050	0.9%	18.6%
= National Cleaning Co.	CLEA.KW	67.1	0.38	8.99%	0.82	0.054	0.000	13.5	0.088	0.047	(21.7%)	169,865	9,173	22.6%	0.6%
▼ Kuwait & Gulf Link Transport Co.	KGLK.KW	NM	0.23	0.00%	0.76	0.046	(0.001)	13.5	0.080	0.042	(30.3%)	374,048	17,154	12.4%	NM
▼ Kuwait Co. For Process Plant Const. & Cont.	KCPC.KW	6.8	1.27	6.97%	0.47	0.315	(0.009)	34.8	0.338	0.175	30.8%	690,148	220,713	35.4%	18.7%
▼ Humansoft Holding Co.	HUMN.KW	12.2	3.64	7.02%	0.47	2.623	(0.011)	320.6	3.470	1.944	(12.9%)	29,836	78,078	32.6%	29.9%
= Gulf Franchising Co.	GFCI.KW	NM	1.24	0.00%	NA	0.050	0.000	2.0	0.148	0.001	(33.0%)	0	0	0.6%	NM
▲ National Shooting Co.	SHOOTING.KW	NM	0.29	0.00%	1.24	0.016	0.000	4.5	0.018	0.007	60.0%	13,616,964	231,038	77.9%	NM
▼ Combined Group Contracting Co.	CGCK.KW	NM	0.66	12.17%	0.59	0.156	(0.002)	26.8	0.251	0.138	(37.2%)	539,641	84,224	87.7%	NM
= United Projects Group	UPAC.KW	60.4	1.28	3.66%	NA	0.465	0.000	91.7	0.512	0.367	(9.2%)	0	0	0.0%	2.1%
▼ ALAFCO Aviation Lease & Finance Co.*	ALAF.KW	25.1	0.47	5.10%	0.85	0.157	(0.001)	149.5	0.278	0.138	(42.3%)	723,666	113,601	27.2%	1.9%
▼ Mubarrad Holding Co.	MBRD.KW	14.1	0.48	8.40%	0.94	0.059	(0.002)	9.6	0.089	0.049	(33.4%)	1,061,700	61,723	73.8%	3.4%
▼ KGL Logistics Co.	LOGK.KW	NM	0.20	0.00%	0.77	0.027	(0.000)	20.1	0.043	0.023	(26.5%)	6,839,150	189,936	26.6%	NM
▲ Integrated holding Co.	INTEGRATED.KW	32.3	1.40	7.73%	0.46	0.388	0.002	85.4	0.600	0.342	(29.6%)	1,031,987	400,359	24.6%	4.3%
= Sharjah Cement Co.	SCEM.KW	NM	0.22	0.00%	0.23	0.042	0.000	25.7	0.064	0.042	0.0%	0	0	0.0%	NM
▼ Gulf Cement Co.	GCEM.KW	NM	0.36	0.00%	0.21	0.034	(0.000)	28.0	0.062	0.029	(37.9%)	359,754	12,029	1.7%	NM
▼ Umm Al-Qaiwain General Investments Co.	QIC.KW	NM	0.63	5.77%	0.17	0.087	(0.005)	31.5	0.096	0.052	30.0%	100	9	0.0%	0.4%
▲ Fujairah Cement Industries Co.	FCEM.KW	NM	0.15	0.00%	0.48	0.035	0.000	12.5	0.053	0.029	(22.2%)	254,138	8,895	5.7%	NM
= Ras-Al-Khaimah for White Cement Co.	RKWC.KW	67.2	0.54	7.69%	0.11	0.065	0.000	32.5	0.080	0.053	0.0%	0	0	0.0%	0.8%
Industrials		51.8	0.91	3.70%				2,797.9			(15.0%)	28,641,488	2,475,442		1.7%

Boursa Kuwait Daily Bulletin

Wednesday, September 9, 2020

Company	Reuters Ticker	Valuation Multiples				Price (KWD)		MKT Cap (KWD Mn.)	52 Weeks High (KWD)	52 Weeks Low (KWD)	YTD-20 Return #	Daily Trading Data		YTD-20 Capital Turnover	ROE
		Trailing P/E (X)	Trailing P/BV (X)	Dividend Yield	Beta	Closing	DTD Change					Volume (Shrs.)	Value (KWD)		
= Palms Agro Production Co.	PAPK.KW	15.5	0.56	0.00%	0.23	0.061	0.000	3.2	0.062	0.025	51.7%	0	0	0.7%	3.6%
▼ Livestock Transport & Trading Co.	CATT.KW	23.9	0.95	0.00%	0.27	0.184	(0.003)	39.9	0.200	0.152	5.1%	1,158	213	11.9%	4.0%
= Danah Alsafat Foodstuff Co.	DANK.KW	NM	0.63	0.00%	0.74	0.012	0.000	1.3	0.030	0.010	(25.3%)	0	0	97.4%	NM
▼ Mezzan Holding Co.	MEZZ.KW	29.6	1.73	2.40%	0.46	0.613	(0.019)	190.8	0.665	0.428	22.6%	424,140	262,318	18.1%	5.8%
Consumer Goods		NM	1.47	1.95%		235.2		19.1%	425,298	262,531	NM				
= Advanced Technology Co.	ATCK.KW	37.5	1.61	1.59%	0.00	0.627	0.000	94.1	0.900	0.580	(22.6%)	0	0	0.0%	4.3%
= Yiacco Medical Co.	YIAC.KW	NM	6.55	0.00%	NA	0.707	0.000	12.1	0.777	0.672	0.1%	0	0	0.0%	NM
= Al-Maidan Clinic For Oral Health Services Co.	MIDAN.KW	51.1	7.58	0.00%	0.00	1.220	0.000	305.0	1.220	1.220	0.0%	0	0	0.0%	14.8%
Health Care		49.2	4.09	0.36%		411.2		(6.3%)	0	0	8.3%				
▲ Kuwait National Cinema Co.	KCIN.KW	29.1	0.93	4.89%	0.27	0.660	0.004	66.7	1.050	0.600	(37.0%)	56,613	37,370	0.9%	3.2%
= Kuwait Hotels Co.	KHOT.KW	NM	1.30	0.00%	NA	0.086	0.000	5.0	0.101	0.069	(14.0%)	500	43	0.1%	NM
▲ Sultan Center Food Products Co.	SCFK.KW	17.5	0.69	0.00%	0.53	0.055	0.001	31.8	0.060	0.036	5.8%	70,000	3,834	6.8%	3.9%
= Kuwait Cable Vision Co.	KWTV.KW	NM	0.52	0.00%	0.21	0.014	0.000	0.5	0.026	0.012	0.0%	0	0	0.0%	NM
▼ IFA Hotels & Resorts Co.*	IFAH.KW	NM	1.69	0.00%	0.23	0.023	(0.001)	14.5	0.062	0.021	(58.5%)	114,010	2,626	3.4%	NM
▼ Oula Fuel Marketing Co.	OULA.KW	31.5	0.71	4.52%	0.46	0.109	(0.002)	44.1	0.134	0.095	(14.2%)	18,461	2,025	4.1%	2.2%
▼ Kuwait Resorts Co.	MUNK.KW	15.0	0.34	0.00%	0.69	0.047	(0.000)	9.9	0.060	0.038	(18.4%)	513,821	24,067	39.1%	2.3%
▼ Jazeera Airways Co.	JAZK.KW	NM	4.40	6.08%	0.71	0.576	(0.003)	115.2	1.110	0.372	(47.6%)	69,265	39,698	22.8%	NM
▼ Soor Fuel Marketing Co.	SOOR.KW	20.6	0.68	4.50%	0.46	0.110	(0.001)	44.5	0.129	0.096	(12.0%)	8,067	886	4.7%	3.3%
= Future Kid Entertainment and R.E Co.	KIDK.KW	NM	0.53	15.47%	0.02	0.077	0.000	8.9	0.110	0.069	(13.3%)	0	0	0.6%	NM
= Al Rai Media Group Co.	ALRA.KW	NM	0.86	0.00%	0.26	0.037	0.000	8.6	0.049	0.031	(2.4%)	0	0	0.3%	NM
▲ Jiyad Holding Co	JIYAD.KW	10.4	0.33	0.00%	0.62	0.037	0.001	12.8	0.047	0.029	(5.9%)	12,966	463	14.0%	3.2%
= Al Eid Food Co.	ALEID.KW	4.5	0.35	0.00%	NA	0.064	0.000	6.4	0.096	0.046	(19.0%)	0	0	5.1%	7.8%
Consumer Services		NM	0.92	4.24%		369.0		(33.1%)	863,703	111,012	NM				
▼ Zain	ZAIN.KW	12.2	2.02	5.77%	1.39	0.572	(0.001)	2,475.1	0.604	0.407	(4.7%)	2,790,157	1,595,211	16.9%	16.6%
▲ National Mobile Telecom Co.	OORE.KW	20.6	0.55	8.40%	0.46	0.592	0.007	298.4	0.835	0.550	(28.5%)	249,749	146,103	3.1%	2.7%
= AAN digital services Co.	AAN.KW	NM	0.35	0.00%	1.32	0.012	0.000	10.1	0.021	0.009	(14.1%)	9,585,612	110,035	143.0%	NM
▲ Kuwait Telecommunication Co.	STC.KW	10.9	2.08	5.81%	0.58	0.861	0.001	430.0	0.870	0.680	9.3%	23,528	20,234	2.2%	19.2%
▼ Hayat Communications Co.	HAYK.KW	7.9	0.55	0.00%	1.22	0.065	(0.002)	6.0	0.098	0.030	(14.0%)	170,079	10,964	6.3%	7.0%
Telecommunications		12.5	1.60	5.99%		3,219.5		(5.8%)	12,819,125	1,882,546	12.8%				
▲ National Bank of Kuwait	NBKK.KW	19.4	1.91	3.84%	1.28	0.857	0.006	5,870.6	1.062	0.654	(15.9%)	5,052,793	4,336,022	15.2%	9.8%
▲ Gulf Bank	GBKK.KW	12.6	1.08	4.93%	1.13	0.212	0.001	646.2	0.317	0.180	(30.0%)	3,151,069	665,567	35.4%	8.6%
= Commercial Bank of Kuwait	CBKK.KW	NM	1.42	4.14%	0.39	0.480	0.000	956.2	0.555	0.465	(9.3%)	0	0	1.4%	NM
▼ Ahli Bank of Kuwait	ABKK.KW	NM	0.51	3.92%	0.62	0.177	(0.001)	286.6	0.320	0.156	(30.9%)	239,680	42,571	6.5%	0.3%
▲ Ahli United Bank - Kuwait	BKME.KW	14.2	1.37	4.72%	0.85	0.274	0.002	593.4	0.330	0.225	(15.9%)	515,311	140,004	5.7%	9.7%
▼ Kuwait International Bank	KIBK.KW	26.2	0.77	3.40%	1.00	0.177	(0.001)	200.5	0.271	0.162	(32.2%)	8,754,908	1,547,393	93.7%	3.0%
= Burgan Bank	BURG.KW	8.3	0.73	6.05%	1.05	0.198	0.000	519.8	0.337	0.175	(34.9%)	475,022	93,997	14.5%	8.8%
= Kuwait Finance House	KFH.KW	23.9	2.57	2.88%	1.42	0.624	0.000	4,788.7	0.761	0.473	(15.4%)	5,803,027	3,616,862	22.3%	10.7%
▲ Boubyan Bank	BOUK.KW	38.2	3.92	1.33%	1.05	0.596	0.002	1,943.1	0.638	0.380	5.1%	1,492,701	890,386	5.4%	10.3%
▼ Warba Bank	WARB.KW	NM	1.78	0.00%	0.98	0.206	(0.005)	324.5	0.279	0.164	(21.3%)	7,411,139	1,542,403	33.5%	NM
▼ Ahli United Bank - Bahrain	AUBK.KW	10.8	1.80	8.23%	1.11	0.219	(0.005)	2,132.5	0.311	0.160	(24.8%)	19,484,521	4,302,695	35.4%	16.6%
= Ithmaar Bank	ITHMR.KW	NM	24.95	0.00%	0.77	0.022	0.000	67.6	0.025	0.021	0.0%	0	0	0.0%	NM
Banks		20.3	1.82	3.89%		18,329.6		(16.7%)	52,380,171	17,177,899	9.0%				

Boursa Kuwait Daily Bulletin

Wednesday, September 9, 2020

Company	Reuters Ticker	Valuation Multiples				Price (KWD)		MKT Cap (KWD Mn.)	52 Weeks High (KWD)	52 Weeks Low (KWD)	YTD-20 Return #	Daily Trading Data		YTD-20 Capital Turnover	ROE
		Trailing P/E (X)	Trailing P/BV (X)	Dividend Yield	Beta	Closing	DTD Change					Volume (Shrs.)	Value (KWD)		
▼ Kuwait Insurance Co.	KINS.KW	6.2	0.79	8.03%	NA	0.356	(0.014)	69.1	0.387	0.300	7.9%	500	178	1.1%	12.8%
▲ Gulf Insurance Group	GINS.KW	7.5	1.02	6.01%	0.08	0.605	0.008	113.2	0.680	0.550	(8.3%)	12,099	7,193	0.1%	13.6%
▲ Ahleiah Insurance Co.	AINS.KW	7.9	0.80	5.71%	0.12	0.410	0.014	86.1	0.424	0.367	0.6%	65,118	26,347	0.8%	10.1%
▲ Warba Insurance Co.	WINS.KW	12.6	0.40	8.91%	0.36	0.077	0.002	13.6	0.094	0.051	27.3%	26,701	2,056	1.9%	3.1%
▲ Kuwait Reinsurance Co.	KWRE.KW	8.5	0.77	2.25%	0.02	0.205	0.005	41.8	0.200	0.126	48.6%	1,315	270	0.1%	9.1%
= First Takaful Insurance Co.	FTIK.KW	NM	0.47	0.00%	0.33	0.040	0.000	4.2	0.056	0.031	4.5%	1,000	40	2.6%	NM
▼ Wethaq Takaful Insurance Co.	WETH.KW	NM	0.21	0.00%	0.38	0.022	(0.001)	2.5	0.035	0.018	(10.4%)	193,499	4,394	12.2%	NM
= Bahrain Kuwait Insurance Co.	BKIK.KW	12.0	0.94	7.50%	0.02	0.200	0.000	28.6	0.220	0.190	0.0%	0	0	0.0%	7.8%
Insurance		9.1	0.81	6.00%				359.1			3.4%	300,232	40,477		8.8%
▼ Sokouk Holding Co.	SHCK.KW	NM	0.39	0.00%	1.16	0.027	(0.000)	15.8	0.040	0.022	(24.4%)	1,466,555	39,113	28.7%	NM
▼ Kuwait Real Estate Co.	KREK.KW	25.5	0.73	0.00%	0.99	0.097	(0.001)	92.3	0.115	0.070	(7.2%)	727,639	70,928	18.1%	2.8%
= United Real Estate Co.	UREK.KW	NM	0.33	0.00%	0.38	0.052	0.000	61.8	0.063	0.045	(15.2%)	0	0	0.6%	NM
▼ National Real Estate Co.	NREK.KW	23.6	0.38	0.00%	1.15	0.071	(0.000)	101.8	0.090	0.058	(18.2%)	944,021	67,029	16.1%	1.6%
▼ Salhia Real Estate Co.	SREK.KW	6.0	1.22	6.08%	0.34	0.396	(0.001)	203.0	0.460	0.324	(5.0%)	45,000	17,820	5.1%	20.2%
▲ Tamdeen Real Estate Co.	TAMK.KW	NM	0.75	1.98%	0.10	0.245	0.004	105.8	0.343	0.241	(23.7%)	2,500	613	0.5%	NM
▲ Ajial Real Estate Entertainment Co.	AREC.KW	20.3	0.22	0.00%	0.51	0.142	0.007	27.6	0.213	0.115	(17.6%)	50	7	3.7%	1.1%
= Al Massaleh Real Estate Co.	MREC.KW	NM	0.40	0.00%	0.24	0.035	0.000	8.2	0.040	0.026	(5.4%)	0	0	1.5%	NM
▲ Arab Real Estate Co.	ARAB.KW	NM	0.26	0.00%	1.18	0.025	0.000	12.8	0.033	0.020	(14.6%)	3,155,685	77,979	21.5%	NM
▼ AL-Enma'a Real Estate Co.*	ENMA.KW	19.6	0.44	0.00%	0.64	0.044	(0.001)	20.0	0.079	0.037	(29.1%)	1,015,900	45,018	23.5%	2.3%
= Mabanee Co.	MABK.KW	23.3	1.52	2.07%	1.09	0.635	0.000	701.7	0.878	0.434	(25.6%)	415,277	264,140	17.2%	6.5%
▼ Injazzat Real Estate Development Co.	INJA.KW	NM	0.50	8.91%	0.20	0.077	(0.002)	26.4	0.091	0.061	(4.4%)	110,000	8,415	1.1%	NM
▲ Investors Holding Group Co.	INVK.KW	NM	1.12	0.00%	1.16	0.023	0.006	14.0	0.017	0.007	181.3%	18,069,336	352,920	226.2%	NM
= The Commercial Real Estate Co.	TIJK.KW	18.4	0.60	5.06%	0.53	0.097	0.000	171.7	0.103	0.083	3.7%	0	0	6.3%	3.3%
= Sanam Real Estate Co.	SANK.KW	NM	0.40	0.00%	0.38	0.030	0.000	3.7	0.043	0.027	(25.0%)	0	0	2.4%	NM
▲ A'ayan Real Estate Co.	AYRE.KW	NM	0.36	8.25%	0.57	0.060	0.001	24.8	0.080	0.048	(18.3%)	322,646	19,031	2.5%	NM
= Aqar Real Estate Investment Co.	AQAR.KW	5.9	0.50	7.42%	NA	0.058	0.000	14.3	0.089	0.058	(23.7%)	0	0	1.7%	8.5%
▼ Kuwait Real Estate Holding Co.	ALAQ.KW	NM	0.55	0.00%	0.53	0.023	(0.002)	4.4	0.034	0.023	(19.5%)	199,784	4,549	8.0%	NM
▼ MAZAYA Holding Co.	MAZA.KW	NM	0.50	0.00%	0.99	0.053	(0.000)	36.5	0.067	0.047	(10.5%)	1,467,805	77,732	14.9%	NM
= Tijara Real Estate & Investment Co.	TIJA.KW	14.3	0.38	5.01%	0.30	0.040	0.000	14.8	0.055	0.034	(20.2%)	0	0	0.2%	2.6%
▼ Al TAMEER Real Estate Investment Co.	AMAR.KW	NM	0.34	0.00%	0.94	0.020	(0.000)	4.9	0.034	0.013	(23.4%)	5,435,699	110,249	83.5%	NM
▲ Arkan Al-Kuwait Real Estate Co. *	ARKK.KW	9.2	0.64	9.36%	0.22	0.086	0.004	21.5	0.100	0.076	(3.8%)	32,412	2,761	9.0%	6.9%
= Al-Argan International Real Estate Co.	ARGK.KW	NM	0.27	5.80%	0.42	0.083	0.000	22.0	0.141	0.060	(20.9%)	0	0	0.4%	NM
▲ Abyaar Real Estate Development Co.	ABYR.KW	NM	0.21	0.00%	1.21	0.007	0.000	8.2	0.014	0.005	(5.1%)	3,780,782	27,623	56.4%	NM
▼ Munshaat Real Estate Projects Co.	MUNS.KW	NM	0.49	0.00%	0.66	0.063	(0.000)	20.4	0.085	0.045	(14.3%)	104,800	6,404	5.9%	NM
▲ First Dubai For Real Estate Development	FIRST.KW	NM	0.54	0.00%	1.44	0.040	0.000	40.4	0.055	0.027	13.5%	6,109,131	248,827	27.9%	0.6%
▼ Kuwait Business Town Real Estate Co.	KBTK.KW	10.5	0.24	0.00%	1.05	0.026	(0.001)	16.3	0.046	0.022	(40.9%)	1,462,932	38,073	34.8%	2.2%
= Real Estate Asset Management Co.	REAM.KW	NM	1.48	0.00%	0.08	0.204	0.000	22.4	0.204	0.060	132.1%	0	0	0.1%	NM
= MENA Real Estate Co. *	MENK.KW	NM	0.20	0.00%	0.98	0.028	0.000	3.8	0.043	0.021	(33.1%)	2,717,317	75,466	88.1%	NM
= Al Mudon International Real Estate Co.	ALMK.KW	NM	0.12	0.00%	0.87	0.016	0.000	1.6	0.029	0.015	(35.1%)	0	0	23.7%	NM
▲ Real Estate Trade Centers Co.	MARA.KW	16.1	0.17	0.00%	0.33	0.028	0.000	3.9	0.050	0.018	20.3%	135,440	3,693	27.1%	1.0%
▲ Kuwait Remal Real Estate Co.	REMAK.KW	NM	0.27	0.00%	0.85	0.018	0.000	5.5	0.027	0.013	(26.6%)	268,206	4,680	17.1%	NM
▼ Mashaer Holding Co.	MASHAER.KW	NM	0.50	8.78%	0.53	0.057	(0.000)	10.2	0.086	0.048	(26.7%)	222,849	12,364	31.3%	NM
= Effect Real Estate Co.	EFFECT.KW	NM	0.29	0.00%	0.44	0.021	0.000	1.7	N/A	N/A	0.0%	0	0	0.0%	NM
= Ajwan Gulf Real Estate Co.	AJWN.KW	NM	0.19	0.00%	0.60	0.011	0.000	2.2	0.016	0.009	(28.7%)	0	0	116.7%	NM
= Al Masaken Intl. Real Estate Dev. Co.	MASKN.KW	NM	0.37	0.00%	0.14	0.031	0.000	3.1	0.074	0.027	(28.6%)	0	0	0.6%	0.4%
= Dalqan Real Estate Co.	DALQ.KW	62.7	2.37	0.00%	NA	0.350	0.000	15.8	0.385	0.333	0.0%	0	0	0.0%	3.8%
▲ Dar Al Thuraya Real Estate Co.	THURY.KW	NM	1.22	0.00%	0.02	0.129	0.002	18.9	0.190	0.040	84.0%	1	0	2.1%	0.2%
▼ Osos Holding Group Co.	OSOS.KW	NM	0.86	7.09%	0.25	0.094	(0.001)	9.9	0.118	0.084	(6.0%)	27,835	2,528	7.0%	NM
▲ KFH Capital REIT	BAITAKREIT.KW	NA	NA	0.00%	NA	1.040	0.011	24.5	1.131	0.978	NA	18,262	18,848	3.8%	NA
Real Estate		NM	0.70	2.54%				1,918.7			(15.1%)	48,257,864	1,596,810		NM

Boursa Kuwait Daily Bulletin

Wednesday, September 9, 2020

Company	Reuters Ticker	Valuation Multiples				Price (KWD)		MKT Cap (KWD Mn.)	52 Weeks High (KWD)	52 Weeks Low (KWD)	YTD-20 Return #	Daily Trading Data		YTD-20 Capital Turnover	ROE
		Trailing P/E (X)	Trailing P/BV (X)	Dividend Yield	Beta	Closing	DTD Change					Volume (Shrs.)	Value (KWD)		
▲ Kuwait Investment Co.	KINV.KW	NM	0.69	12.53%	0.71	0.119	0.001	65.6	0.172	0.095	(20.7%)	402,410	47,384	23.4%	NM
= Commercial Facilities Co.	FACI.KW	NM	0.68	9.41%	0.52	0.181	0.000	97.2	0.235	0.179	(16.6%)	0	0	4.4%	NM
= Int'l Financial Advisors Co.	IFIN.KW	NM	0.99	0.00%	1.32	0.031	0.000	8.2	0.060	0.027	(42.3%)	0	0	32.0%	NM
▼ National Investment Co.	NINV.KW	NM	0.78	5.81%	1.24	0.141	(0.002)	123.5	0.155	0.080	2.2%	3,435,806	482,492	32.7%	NM
▼ Kuwait Projects Co.(Holding)	KPRO.KW	5.1	1.39	6.51%	0.57	0.151	(0.001)	302.0	0.231	0.147	(30.1%)	1,323,694	198,947	9.3%	27.3%
= Coast Invest. & Development Co.	COAS.KW	NM	0.42	0.00%	1.33	0.034	0.000	21.5	0.045	0.026	(14.0%)	124,010	4,167	18.5%	NM
▲ The Securities House Co.	SECH.KW	NM	0.51	0.00%	1.14	0.045	0.000	25.0	0.063	0.027	(1.1%)	12,338,126	557,402	58.6%	NM
▼ Arzan Financial Group For Fin. & Invest.	ARZA.KW	NM	0.48	0.00%	1.03	0.053	(0.006)	42.6	0.064	0.022	123.6%	32,776,155	1,789,067	189.4%	NM
▼ Kuwait Financial Centre	MARKZ.KW	NM	0.46	6.25%	0.77	0.080	(0.001)	38.5	0.121	0.070	(24.5%)	218,940	17,426	24.8%	NM
▼ Kuwait & M.E. Financial Inv. Co.	KMEF.KW	4.4	1.42	0.00%	0.62	0.125	(0.002)	33.0	0.138	0.063	39.7%	501,802	61,521	19.6%	32.2%
▼ First Investment Co.	OLAK.KW	NM	0.41	0.00%	1.01	0.028	(0.001)	18.2	0.045	0.022	(18.6%)	2,541,631	71,126	170.7%	NM
▲ Al-Mal Investment Co.	MALK.KW	NM	0.40	0.00%	1.20	0.009	0.000	2.9	0.016	0.008	(5.1%)	850,194	7,963	82.5%	NM
▲ Gulf Investment House	GIHK.KW	NM	1.79	0.00%	1.00	0.099	0.000	64.1	0.100	0.038	53.4%	1,474,024	145,146	19.5%	NM
▲ A'ayan Leasing & Investment Co.	AAYA.KW	NM	1.01	0.00%	1.23	0.080	0.002	65.1	0.079	0.032	71.3%	22,734,086	1,838,913	127.3%	NM
= Bayan Investment Co.	BAYK.KW	NM	0.55	0.00%	0.85	0.048	0.000	18.7	0.053	0.031	25.2%	0	0	5.7%	NM
= Osoul Investment Co.	OSUL.KW	NM	0.77	13.32%	0.44	0.082	0.000	12.9	0.121	0.070	9.3%	163,156	13,335	25.6%	NM
▲ Kuwait Finance & Investment Co.	KFSK.KW	NM	0.41	0.00%	0.30	0.047	0.000	15.1	0.058	0.038	(5.5%)	61,600	2,801	8.9%	NM
▼ Kamco Investment Co.	KAMC.KW	NM	0.49	7.14%	0.38	0.070	(0.000)	24.0	0.111	0.060	(22.2%)	70,685	4,949	12.0%	NM
▲ National International Holding Co.	NIHK.KW	8.0	0.39	6.67%	0.67	0.066	0.003	15.0	0.081	0.049	(10.1%)	100	7	3.8%	4.8%
= UniCap Investment and Finance	UNICAP.KW	NM	0.53	0.00%	0.65	0.040	0.000	9.6	0.057	0.035	(27.5%)	261,242	10,293	9.3%	NM
▼ Al Madar Finance & Investment Co.	MADR.KW	17.6	0.86	5.60%	0.34	0.086	(0.001)	18.5	0.148	0.062	(6.9%)	225,209	19,533	19.9%	4.9%
= Al-Deera Holding	DEER.KW	NM	1.92	0.00%	0.83	0.016	0.000	3.2	0.022	0.011	(20.0%)	0	0	6.1%	NM
▼ Al Salam Group Holding Co.	SAGH.KW	29.1	0.22	0.00%	1.27	0.025	(0.001)	6.8	0.036	0.018	(13.3%)	16,939,991	433,054	208.8%	0.8%
▲ Ektitab Holding Co.	EKTT.KW	NM	0.36	0.00%	1.00	0.015	0.000	4.8	0.017	0.010	0.0%	3,449,166	52,117	41.9%	NM
▼ Al Madina For Finance & Investment Co.	MADI.KW	NM	0.41	0.00%	1.21	0.012	(0.000)	4.9	0.019	0.009	(20.0%)	6,448,076	77,553	147.3%	NM
= NOOR Financial Investment Co.	NOOR.KW	7.7	1.19	3.59%	1.24	0.167	0.000	69.0	0.184	0.076	40.3%	362,276	59,073	52.3%	15.4%
= Tamdeen Investment Co.	TAMI.KW	NM	0.60	3.56%	0.33	0.336	0.000	115.9	0.400	0.199	(2.6%)	0	0	0.3%	NM
▼ Kuwait Syrian Holding Co.	KSHC.KW	NM	0.23	0.00%	0.73	0.025	(0.000)	4.4	0.043	0.022	(20.3%)	400	10	25.1%	NM
▼ Asiya Capital Investment Co.	ASIYA.KW	NM	0.36	0.00%	0.52	0.031	(0.000)	25.1	0.041	0.029	(23.2%)	47,203	1,483	1.1%	NM
▲ Gulf North Africa Holding Co.	GNAH.KW	NM	0.75	0.00%	1.10	0.056	0.001	8.4	0.062	0.052	(9.4%)	50,000	2,810	4.0%	NM
= Amwal International Investment Co.	AMWA.KW	NM	0.65	0.00%	0.39	0.034	0.000	6.2	0.055	0.030	14.3%	0	0	0.0%	NM
▼ Alimtiqaz Investment Group	ALIMK.KW	NM	0.50	8.69%	0.95	0.088	(0.001)	100.1	0.137	0.071	(29.9%)	1,886,730	167,784	36.3%	NM
= Tamkeen Holding Co.	TAMKE.KW	NM	0.05	0.00%	NA	0.005	0.000	0.3	N/A	N/A	0.0%	0	0	0.0%	NM
▼ Manazel Holding Co.	MANK.KW	9.4	0.70	0.00%	1.38	0.033	(0.000)	14.0	0.048	0.021	(17.1%)	2,023,575	65,367	40.1%	7.5%
▲ National Industries Group	NIND.KW	NM	0.76	5.92%	1.42	0.169	0.007	241.3	0.247	0.121	(29.9%)	14,013,254	2,323,088	37.3%	NM
▼ Warba Capital Holding Co.	WARBACAP.KW	NM	0.56	0.00%	0.70	0.047	(0.000)	4.7	0.070	0.045	(26.8%)	91,350	4,121	8.7%	NM
= Arabi Holding Group Co.	AGHC.KW	NM	1.23	0.00%	0.15	0.198	0.000	34.2	0.337	0.076	(27.7%)	0	0	3.1%	NM
▲ Privatization Holding Co.	KPPC.KW	NM	0.33	0.00%	0.79	0.042	0.001	25.6	0.059	0.037	(15.4%)	185,177	7,445	5.5%	NM
▼ Credit Rating & Collection Co.	TAHS.KW	NM	1.03	0.00%	NA	0.032	(0.003)	5.3	0.035	0.019	60.0%	1,500	49	0.2%	NM
= Egypt Kuwait Holding Co.	ECHK.KW	12.1	2.53	0.00%	0.16	0.370	0.000	379.0	0.500	0.318	(17.8%)	0	0	0.0%	20.9%
▲ GFH Financial Group	GFH.KW	19.0	1.02	7.68%	0.87	0.052	0.001	267.1	0.074	0.042	(24.1%)	360,876	18,908	1.5%	5.3%
▼ Inovest	INOV.KW	8.8	0.47	7.01%	0.71	0.068	(0.000)	20.4	0.072	0.044	6.4%	30,005	1,980	5.2%	5.4%
= Al Bareeq Holding	BAREEQ.KW	39.4	1.68	0.00%	0.04	0.102	0.000	77.0	0.110	0.100	2.0%	0	0	1.7%	4.3%
= Amar For Finance and Leasing Co.	AMARF.KW	NM	0.58	0.00%	0.07	0.049	0.000	9.9	0.064	0.037	30.0%	0	0	10.9%	NM
= Al-Manar Financing & Leasing Co.	ALMANAR.KW	NM	0.47	0.00%	NA	0.049	0.000	15.2	0.060	0.037	(5.2%)	11,620	557	6.7%	NM
Financial Services		NM	0.84	4.20%				2,464.0			(11.0%)	125,404,069	8,487,870		NM

Boursa Kuwait Daily Bulletin

Wednesday, September 9, 2020

Company	Reuters Ticker	Valuation Multiples				Price (KWD)		MKT Cap (KWD Mn.)	52 Weeks High (KWD)	52 Weeks Low (KWD)	YTD-20 Return #	Daily Trading Data		YTD-20 Capital Turnover	ROE
		Trailing P/E (X)	Trailing P/BV (X)	Dividend Yield	Beta	Closing	DTD Change					Volume (Shrs.)	Value (KWD)		
▼ Automated Systems Co.	ASCK.KW	NM	0.56	5.81%	0.12	0.069	(0.001)	6.9	0.086	0.051	(2.7%)	61,000	4,061	1.7%	NM
Technology		NM	0.56	5.81%				6.9			(2.7%)	61,000	4,061		NM
▼ Shamal Az-Zour Al-Oula Power and Water Co.	AZNOULA.KW	28.9	4.64	0.00%	2.21	0.323	(0.002)	355.3	0.500	0.297	N/A	2,285,022	737,462	26.1%	16.1%
Utilities		28.9	4.64	0.00%				355.3			N/A	2,285,022	737,462		16.1%
Boursa Kuwait		26.9	1.37	4.01%				31,393.3			(13.62%)	290,867,287	33,385,067		5.1%

Year-to-Date 2020 Top Movers & Most Active Stocks

YTD Top % Gainers	Close (KWD)	Percent Change	YTD Top % Losers	Close (KWD)	Percent Change
Investors Holding Group Co.	0.023	181.3%	IFA Hotels & Resorts Co.	0.023	(58.5%)
Real Estate Asset Management Co.	0.204	132.1%	Jazeera Airways Co.	0.576	(47.6%)
Arzan Financial Group For Fin. & Invest.	0.053	123.6%	Int'l Financial Advisors Co.	0.031	(42.3%)
Dar Al Thuraya Real Estate Co.	0.129	84.0%	ALAFCO Aviation Lease & Finance Co.	0.157	(42.3%)
A'ayan Leasing & Investment Co.	0.080	71.3%	Kuwait Business Town Real Estate Co.	0.026	(40.9%)
YTD Most Active by Volume	Close (KWD)	Volume (Shrs.)	YTD Most Active by Value	Close (KWD)	Value (KWD)
Ahli United Bank - Bahrain	0.219	3,450,253,482	Kuwait Finance House	0.624	1,119,223,275
Kuwait Finance House	0.624	1,712,771,735	National Bank of Kuwait	0.857	875,488,168
Gulf Petroleum Investment	0.021	1,521,330,745	Ahli United Bank - Bahrain	0.219	747,661,454
Arzan Financial Group For Fin. & Invest.	0.053	1,520,869,768	Zain	0.572	390,795,399
Investors Holding Group Co.	0.023	1,408,884,233	Agility (PWC Logistics)	0.623	312,113,311

* Different Fiscal Year Company

Disclaimer & Important Disclosures

Kamco Invest is authorized and fully regulated by the Capital Markets Authority ("CMA, Kuwait") and partially regulated by the Central Bank of Kuwait ("CBK").

This document is provided for informational purposes only. Nothing contained in this document constitutes investment, an offer to invest, legal, tax or other advice or guidance and should be disregarded when considering or making investment decisions. In preparing this document, Kamco Invest did not take into account the investment objectives, financial situation and particular needs of any particular person. Accordingly, before acting on this document, investors should independently evaluate the investments and strategies referred to herein and make their own determination of whether it is appropriate in light of their own financial circumstances and objectives. The entire content of this document is subject to copyright with all rights reserved. This research and the information contained herein may not be reproduced, distributed or transmitted in Kuwait or in any other jurisdiction to any other person or incorporated in any way into another document or other material without our prior written consent.

Analyst Certification

Each of the analysts identified in this report, if any and where applicable, certifies, with respect to the sector, companies or securities that the individual analyses, that (1) the views expressed in this report reflect his or her personal views about all of the subject companies and securities and (2) no part of his or her compensation was, is or will be directly or indirectly dependent on the specific recommendations or views expressed in this report.

Kamco Invest Ratings

Kamco Invest research is based on the analysis of regional and country economics, industries and company fundamentals. Kamco Invest company research reflects a long-term (12-month) target price for a company or stock. The ratings bands are:

* **Outperform:** Target Price represents expected returns >= 10% in the next 12 months

* **Neutral:** Target Price represents expected returns between -10% and +10% in the next 12 months

* **Underperform:** Target Price represents an expected return of <-10% in the next 12 months

In certain circumstances, ratings may differ from those implied by a fair value target using the criteria above. Kamco Invest policy is to maintain up-to-date fair value targets on the companies under its coverage, reflecting any material changes to the analyst's outlook on a company. Share price volatility may cause a stock to move outside the rating range implied by Kamco Invest's fair value target. Analysts may not necessarily change their ratings if this happens, but are expected to disclose the rationale behind their view to Kamco Invest clients.

Any terms and conditions proposed by you which are in addition to or which conflict with this Disclaimer are expressly rejected by Kamco Invest and shall be of no force or effect. The information contained in this document is based on current trade, statistical and other public information we consider reliable. We do not represent or warrant that such information is fair, accurate or complete and it should not be relied upon as such. Kamco Invest has no obligation to update, modify or amend this document or to otherwise notify a recipient thereof in the event that any opinion, forecast or estimate set forth herein, changes or subsequently becomes inaccurate. The publication is provided for informational uses only and is not intended for trading purposes. The information on publications does not give rise to any legally binding obligation and/or agreement, including without limitation any obligation to update such information. You shall be responsible for conducting your own investigation and analysis of the information contained or referred to in this document and of evaluating the merits and risks involved in the securities forming the subject matter of this or other such document. Moreover, the provision of certain data/information in the publication may be subject to the terms and conditions of other agreements to which Kamco Invest is a party.

Nothing in this document should be construed as a solicitation or offer, or recommendation, to acquire or dispose of any investment or to engage in any other transaction, or to provide any investment advice or service. This document is directed at Professional Clients and not Retail Clients within the meaning of CMA rules. Any other persons in receipt of this document must not rely upon or otherwise act upon it. Entities and individuals

Kamco Investment Company (DIFC) Limited ("Kamco Invest DIFC"), Office 205, Level 2, Gate Village 1, Dubai International Financial Centre, a wholly owned subsidiary of Kamco Investment Company KSC (Public), is regulated by the Dubai Financial Services Authority (DFSA). Kamco Invest DIFC may only undertake the financial services activities that fall within the scope of its existing DFSA licence. The information in this document may be distributed by Kamco Invest DIFC on behalf of Kamco Investment Company KSC (Public). This document is intended for Professional Clients or Market Counterparties only as defined by the DFSA, and no other person should act upon it.

This document may not be distributed in Saudi Arabia except to such persons as are permitted under the Offers of Securities Regulations issued by the Capital Market Authority. The Capital Market Authority does not make any representation as to the accuracy or completeness of this document, and expressly disclaims any liability whatsoever for any loss arising from, or incurred in reliance upon, any part of this document. The recipients of this document hereby should conduct their own due diligence on the accuracy of the information relating to the contents of this document. If you do not understand the contents of this document you should consult an authorized financial advisor.

Risk Warnings

Any prices, valuations or forecasts are indicative and are not intended to predict actual results, which may differ substantially from those reflected. The value of an investment may go up as well as down. The value of and income from any investment may fluctuate from day to day as a result of changes in relevant economic markets (including, without limitation, foreseeable or unforeseeable changes in interest rates, foreign exchange rates, default rates, prepayment rates, political or financial conditions, etc.).

Past performance is not indicative of future results. Any opinions, estimates, valuations or projections (target prices and ratings in particular) are inherently imprecise and a matter of judgment. They are statements of opinion and not of fact, based on current expectations, estimates and projections, and rely on beliefs and assumptions. Actual outcomes and returns may differ materially from what is expressed or forecasted. There are no guarantees of future performance. Certain transactions, including those involving futures, options, and other derivatives, give rise to substantial risk and are not suitable for all investors. This document does not propose to identify or to suggest all of the risks (direct or indirect) which may be associated with the investments and strategies referred to herein.

Conflict of Interest

Kamco Invest and its affiliates provide full investment banking services, and they and their directors, officers and employees, may take positions which conflict with the views expressed in this document. Salespeople, traders, and other professionals of Kamco Invest may provide oral or written market commentary or trading strategies to our clients and our proprietary trading desks that reflect opinions that are contrary to the opinions expressed in this document. Our asset management area, our proprietary trading desks and investing businesses may make investment decisions that are inconsistent with the recommendations or views expressed in this document. Kamco Invest may have or seek investment banking or other business relationships for which it will receive compensation from the companies that are the subject of this document. Facts and views presented in this document have not been reviewed by, and may not reflect information known to, professionals in other Kamco Invest business areas, including investment banking personnel. United Gulf Bank, Bahrain owns majority of Kamco Invest's shareholding and this ownership may create, or may create the appearance of, conflicts of interest.

No Liability & Warranty

Kamco Invest makes neither implied nor expressed representations or warranties and, to the fullest extent permitted by applicable law, we hereby expressly disclaim any and all express, implied and statutory representations and warranties of any kind, including, without limitation, any warranty as to accuracy, timeliness, completeness, and fitness for a particular purpose and/or non-infringement. Kamco Invest will accept no liability in any event including (without limitation) your reliance on the information contained in this document, any negligence for any damages or loss of any kind, including (without limitation) direct, indirect, incidental, special or consequential damages, expenses or losses arising out of, or in connection with your use or inability to use this document, or in connection with any error, omission, defect, computer virus or system failure, or