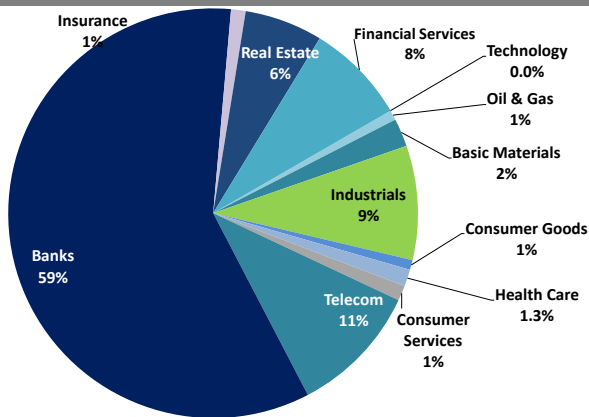


Boursa Kuwait Daily Report

September 8, 2020

Sector Weight by Market Cap



Top 10 Companies by Market Capitalization

Company Name	Market Cap. (Mn KWD)	P/E (X)	ROE* (%)
1- National Bank of Kuwait	5,829.5	19.2	9.8%
2- Kuwait Finance House	4,788.7	23.9	10.7%
3- Zain	2,479.4	12.2	16.6%
4- Ahli United Bank - Bahrain	2,181.2	11.1	16.6%
5- Boubyan Bank	1,936.6	38.0	10.3%
6- Agility (PWC Logistics)	1,259.0	20.6	5.5%
7- Commercial Bank of Kuwait	956.2	NM	NM
8- Mabane Co.	701.7	23.3	6.5%
9- Gulf Bank	643.2	12.5	8.6%
10- Ahli United Bank - Kuwait	589.1	14.0	9.7%
Total	21,365	18.89	10.2%

*: ROE is calculated based on TTM 1H-2020 net profit & shareholders' equity as of 30-June-20

Top Movers and Most Active Stocks

Today's Top % Gainers	Close (KWD)	Change (KWD)	Percent Change
Salbookh Trading Co.	0.034	0.004	12.1%
KGL Logistics Co.	0.028	0.003	10.8%
Metal & Recycling Co.	0.045	0.004	10.0%
Burgan Co. for Drilling, Tdg. & Maint.	0.083	0.007	9.2%
Al Massaleh Real Estate Co.	0.035	0.003	9.0%




Today's Top % Losers	Close (KWD)	Change (KWD)	Percent Change
National International Holding Co.	0.063	(0.006)	(9.2%)
Kuwait Syrian Holding Co.	0.025	(0.002)	(5.6%)
UniCap Investment and Finance	0.040	(0.002)	(5.0%)
Umm Al-Qaiwain General Investments Co.	0.091	(0.005)	(5.0%)
Hayat Communications Co.	0.067	(0.004)	(5.0%)

Today's Most Active by Volume	Close (KWD)	Percent Change	Volume (Shares)
A'ayan Leasing & Investment Co.	0.079	7.7%	39,784,164
Al Salam Group Holding Co.	0.026	4.0%	34,581,238
Gulf Petroleum Investment	0.022	2.9%	34,240,806
Abyaar Real Estate Development Co.	0.007	1.4%	23,623,946
Al TAMEER Real Estate Investment Co.	0.021	2.5%	20,753,337

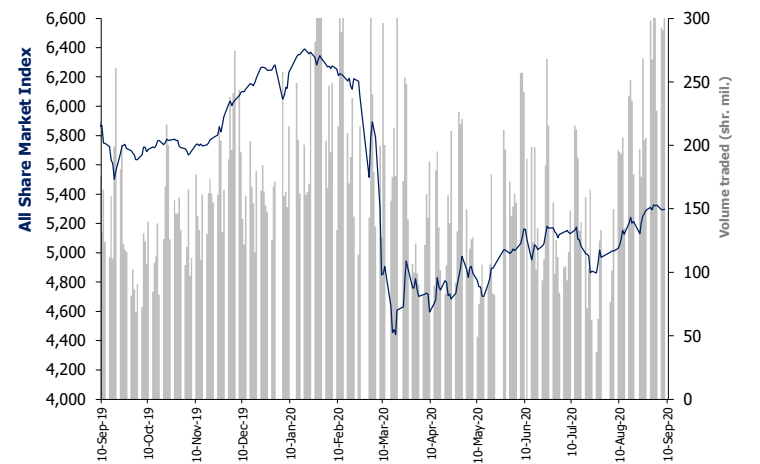
Source: Boursa Kuwait, Kamco Invest Research

Market Capitalization - Sector Returns

	Market Cap. (KWD Mn)	DTD %	DTD % Chg	MTD % Chg	YTD % Chg
Boursa Kuwait	31,401.6	▲	0.1%	0.2%	(13.6%)
Oil & Gas	242.9	▲	1.6%	0.5%	(5.8%)
Basic Materials	685.6	▼	(0.5%)	(1.3%)	(15.1%)
Industrials	2,802.4	▲	0.2%	1.8%	(14.8%)
Consumer Goods	241.7	▲	0.4%	(2.0%)	22.5%
Health Care	411.2	=	0.0%	0.0%	(6.3%)
Consumer Services	370.1	▲	0.8%	0.6%	(32.9%)
Telecommunications	3,220.1	▲	0.2%	(1.9%)	(5.8%)
Banks	18,333.9	▼	(0.0%)	(0.5%)	(16.6%)
Insurance	356.2	▲	1.4%	1.3%	2.5%
Real Estate	1,913.1	▲	0.4%	2.9%	(15.3%)
Financial Services	2,459.9	▼	(0.1%)	5.0%	(11.1%)
Technology	7.0	▲	5.0%	2.2%	(1.4%)
Utilities	357.5	▲	0.3%	1.6%	N/A

Market Breadth	 76	 42	 56		
Benchmark Return	Closing	DTD	DTD	MTD	YTD
	Value	Chg	% Chg	% Chg	% Chg
Premier Market Index	5,815.74	7.8	0.1%	(0.7%)	(16.6%)
Main 50 Index	4,289.70	(16.5)	(0.4%)	2.6%	(14.0%)
Main Market Index	4,274.36	(7.6)	(0.2%)	2.1%	(13.0%)
All Share Market Index	5,297.49	2.8	0.1%	0.1%	(15.7%)
Market Cap (KWD Mn)	31,401.65	19.0	0.1%	0.2%	(13.6%)

Index Performance relative to Volume



Market Trading Data and Volatility

Trading Indicators	Today's Value	DTD Chg	DTD % Chg	Average Daily YTD 2020	Average Daily YTD 2019
Volume (Shrs Mn)	346.8	56.3	19.4%	178.3	88.6
Value Traded (KWD Mn)	31.0	(3.9)	(11.3%)	34.6	16.9
No. of Trades	10,977	1,268	13.06%	8,255	3,810

Today's Most Active by Value	Close (KWD)	Percent Change	Value (KWD)
A'ayan Leasing & Investment Co.	0.079	7.7%	3,046,105
Warba Bank	0.211	(0.9%)	2,912,865
National Bank of Kuwait	0.851	(0.2%)	1,917,588
Ahli United Bank - Bahrain	0.224	0.0%	1,762,856
Kuwait Finance House	0.624	0.2%	1,631,119

Boursa Kuwait - Premier Market

Tuesday, September 8, 2020

	Premier Market Stocks	Closing Price			Market Capitalization			Valuation Multiples				ROE	YTD-20 Price Return	YTD-20 Trading Indicators	
		KWD	DTD Chg. (KWD)	D-T-D Return	KWD Mn	Weight in Premier Index	Weight in Boursa Kuwait	P/E (X)	P/BV (X)	Yield	Beta			Volume (Mn Shrs)	Value (KWD Mn)
▼	National Bank of Kuwait	0.851	(0.002)	(0.2%)	5,830	25.4%	18.6%	19.2	1.89	3.9%	1.28	9.8%	(16.5%)	1,033.20	871.15
▼	Gulf Bank	0.211	(0.001)	(0.5%)	643	2.8%	2.0%	12.5	1.07	5.0%	1.13	8.6%	(30.4%)	1,074.67	241.86
▲	Kuwait International Bank	0.178	0.001	0.6%	202	0.9%	0.6%	26.4	0.78	3.4%	1.00	3.0%	(31.8%)	1,052.48	202.25
=	Burgan Bank	0.198	0.000	0.0%	520	2.3%	1.7%	8.3	0.73	6.0%	1.05	8.8%	(34.9%)	380.63	83.79
▲	Kuwait Finance House	0.624	0.001	0.2%	4,789	20.9%	15.2%	23.9	2.57	2.9%	1.42	10.7%	(15.4%)	1,706.97	1,115.61
▲	Boubyan Bank	0.594	0.011	1.9%	1,937	8.4%	6.2%	38.0	3.91	1.3%	1.05	10.3%	4.8%	174.93	93.62
▼	Kuwait Projects Co. (Holding)	0.152	(0.001)	(0.7%)	304	1.3%	1.0%	5.1	1.40	6.5%	0.57	27.3%	(29.6%)	185.48	30.87
▲	Mabane Co.	0.635	0.002	0.3%	702	3.1%	2.2%	23.3	1.52	2.1%	1.09	6.5%	(25.6%)	189.82	124.05
▲	National Industries Group (Holding)	0.162	0.001	0.6%	231	1.0%	0.7%	NM	0.73	6.2%	1.42	NM	(32.8%)	518.59	94.88
▼	Boubyan Petrochemical Co.	0.539	(0.002)	(0.4%)	288	1.3%	0.9%	24.4	1.29	6.3%	0.73	5.3%	(19.3%)	68.36	38.66
▼	Qurain Petrochemicals Industries Co.	0.275	(0.002)	(0.7%)	302	1.3%	1.0%	11.7	0.72	5.5%	0.76	6.1%	(11.3%)	127.85	33.41
▼	Agility Public Warehousing Co.	0.621	(0.001)	(0.2%)	1,259	5.5%	4.0%	20.6	1.13	0.7%	1.47	5.5%	(12.7%)	477.12	311.67
▲	Mobile Telecommunications Co.	0.573	0.001	0.2%	2,479	10.8%	7.9%	12.2	2.02	5.8%	1.39	16.6%	(4.5%)	728.93	389.20
▲	Human Soft Holding Co.	2.634	0.015	0.6%	322	1.4%	1.0%	12.2	3.66	7.0%	0.47	29.9%	(12.5%)	39.84	109.85
=	Ahli United Bank (B.S.C)	0.224	0.000	0.0%	2,181	9.5%	6.9%	11.1	1.84	8.0%	1.11	16.6%	(23.0%)	3,430.77	743.36
▼	Warba Bank	0.211	(0.002)	(0.9%)	332	1.4%	1.1%	NM	1.82	0.0%	0.98	NM	(19.4%)	520.47	110.70
▲	Mezzan Holding Co.	0.632	0.002	0.3%	197	0.9%	0.6%	30.5	1.79	2.3%	0.46	5.8%	26.4%	55.79	30.73
▲	Integrated Holding Co.	0.386	0.016	4.3%	85	0.4%	0.3%	32.2	1.40	7.8%	0.46	4.3%	(29.9%)	52.99	24.36
▲	Shamal Az-Zour Al-Oula Power and Water	0.325	0.001	0.3%	358	1.6%	1.1%	29.1	4.67	0.0%	2.22	16.1%	NA	284.49	98.80
Subtotal- Premier Market Stocks		5,815.74	7.85	0.14%	22,960	100%	73%	18.4	1.81	3.93%		9.8%	-15.7%	12,103.36	4,748.79
Remaining of the Market					8,442		27%	(108.2)	0.82	4.22%		-0.8%		16,964.63	894.42

Source: Kamco Research

Boursa Kuwait Daily Bulletin

Tuesday, September 8, 2020

Company	Reuters Ticker	Valuation Multiples				Price (KWD)		MKT Cap (KWD Mn.)	52 Weeks High (KWD)	52 Weeks Low (KWD)	YTD-20 Return #	Daily Trading Data		YTD-20 Capital Turnover	ROE
		Trailing P/E (X)	Trailing P/BV (X)	Dividend Yield	Beta	Closing	DTD Change					Volume (Shrs.)	Value (KWD)		
▲ Senergy Holding Co.	SENE.KW	NM	0.34	0.00%	1.13	0.017	0.000	3.4	0.027	0.014	(22.8%)	673,221	11,264	25.5%	NM
= Independent Petroleum Group	IPGK.KW	14.1	0.98	5.62%	0.28	0.430	0.000	96.6	0.497	0.375	(10.8%)	0	0	0.3%	7.0%
▲ National Petroleum Services Co.	NAPS.KW	11.5	2.70	6.79%	0.22	1.000	0.020	100.0	1.389	0.903	(14.5%)	600	600	0.2%	23.4%
= The Energy House Co.	ENER.KW	NM	0.70	0.00%	0.94	0.022	0.000	16.4	0.036	0.014	(3.9%)	0	0	5.8%	NM
▲ Gulf Petroleum Investment	GPIK.KW	NM	0.16	0.00%	1.07	0.022	0.001	6.4	0.025	0.012	7.5%	34,240,806	739,853	507.1%	NM
▲ Burgan Co. for Drilling, Tdg. & Maint. *	ABAR.KW	15.2	0.31	0.00%	NA	0.083	0.007	20.1	0.098	0.060	3.5%	2,150	174	0.1%	2.0%
Oil & Gas		28.9	0.88	5.03%				242.9			(5.8%)	34,916,777	751,891		3.1%
▲ Kuwait Foundry Co.	KFDC.KW	37.3	0.88	6.20%	0.66	0.242	0.002	17.5	0.510	0.192	(27.8%)	1,504	363	2.2%	2.3%
▼ Boubyan Petrochemicals Co.*	BPCC.KW	24.4	1.29	6.32%	0.73	0.539	(0.002)	288.3	0.800	0.395	(19.3%)	558,917	301,360	12.8%	5.3%
= Al Kout for Industrial Projects Co.	ALKK.KW	27.8	2.84	6.50%	0.02	0.769	0.000	77.6	0.850	0.769	(9.5%)	0	0	0.0%	10.2%
▼ Qurain Petrochemical Industries Co. *	ALQK.KW	11.7	0.72	5.51%	0.76	0.275	(0.002)	302.3	0.341	0.163	(11.3%)	1,186,131	327,860	11.6%	6.1%
Basic Materials		16.8	0.99	5.98%				685.6			(15.1%)	1,746,552	629,583		5.9%
▼ Specialities Group Holding Co.	SPEC.KW	10.7	0.33	0.00%	0.39	0.058	(0.002)	9.6	0.078	0.050	(23.8%)	180,102	10,889	25.2%	3.0%
= Kuwait Cement Co.	KCEM.KW	NM	0.73	2.79%	0.46	0.174	0.000	127.6	0.271	0.144	(29.3%)	149,355	25,973	7.7%	NM
▲ Gulf Cable & Electrical Ind. Co.	CABL.KW	37.2	0.95	5.44%	0.91	0.735	0.002	154.3	0.737	0.390	50.6%	469,189	343,068	40.4%	2.6%
▲ Heavy Eng'g Ind. & Shipbuilding Co.	SHIP.KW	6.1	0.99	8.11%	0.60	0.370	0.002	66.7	0.419	0.298	(8.6%)	287,110	105,318	22.7%	16.2%
▼ Kuwait Portland Cement Co.	PCEM.KW	NM	1.26	5.17%	0.46	0.774	(0.026)	77.6	1.210	0.683	(21.2%)	62,432	48,869	5.6%	0.9%
= Shuaiba Industrial Co.	PAPE.KW	25.1	0.73	3.79%	0.12	0.130	0.000	13.1	0.180	0.122	(16.1%)	0	0	0.6%	2.9%
▲ Metal & Recycling Co.	MRCK.KW	NM	0.53	0.00%	0.21	0.045	0.004	5.3	0.070	0.020	(9.8%)	50	2	1.8%	NM
= ACICO Industries Co.	ACIC.KW	NM	0.39	5.29%	0.37	0.099	0.000	29.9	0.145	0.081	(25.6%)	24,000	2,354	5.6%	NM
= Hilal Cement Co.	HCCK.KW	NM	0.89	15.97%	0.11	0.094	0.000	9.5	0.126	0.063	(6.1%)	0	0	0.5%	NM
= National Industries Co.	NIBM.KW	NM	0.73	6.18%	0.15	0.156	0.000	58.1	0.176	0.143	(5.5%)	97,500	14,746	0.3%	NM
▲ Equipment Holding Co.	EQUI.KW	NM	0.40	0.00%	1.03	0.017	0.001	2.4	0.024	0.013	(21.0%)	2,766,031	47,360	22.8%	NM
= National Co. for Consumer Industries	NCCI.KW	57.3	0.57	0.00%	NA	0.052	0.000	4.7	0.100	0.010	(5.1%)	0	0	0.4%	1.0%
▲ Salbookh Trading Co.	SALB.KW	NM	0.51	0.00%	0.61	0.034	0.004	3.6	0.051	0.026	(31.7%)	731,122	24,028	23.9%	NM
▼ Agility (PWC Logistics)	AGLT.KW	20.6	1.13	0.67%	1.47	0.621	(0.001)	1,259.0	0.748	0.357	(12.7%)	869,825	541,751	23.5%	5.5%
▲ Educational Holding Group*	EDUK.KW	8.9	1.65	19.81%	0.45	0.300	0.001	73.6	0.475	0.228	(31.7%)	5,056	1,461	0.9%	18.6%
▲ National Cleaning Co.	CLEA.KW	67.1	0.38	8.99%	0.82	0.054	0.001	13.5	0.088	0.047	(21.7%)	67,668	3,658	22.5%	0.6%
▲ Kuwait & Gulf Link Transport Co.	KGLK.KW	NM	0.23	0.00%	0.76	0.047	0.002	13.6	0.080	0.042	(29.4%)	454,632	21,193	12.2%	NM
▲ Kuwait Co. For Process Plant Const. & Cont.	KCPC.KW	7.0	1.31	6.78%	0.47	0.324	0.006	35.7	0.338	0.175	34.5%	1,026,602	329,329	34.8%	18.7%
▲ Humansoft Holding Co.	HUMN.KW	12.2	3.66	6.99%	0.47	2.634	0.015	322.0	3.470	1.944	(12.5%)	226,906	591,391	32.6%	29.9%
▼ Gulf Franchising Co.	GFCL.KW	NM	1.24	0.00%	NA	0.050	(0.003)	2.0	0.148	0.001	(33.0%)	5,000	251	0.6%	NM
▲ National Shooting Co.	SHOOTING.KW	NM	0.29	0.00%	1.24	0.016	0.001	4.4	0.018	0.007	57.0%	103,190	1,557	73.0%	NM
= Combined Group Contracting Co.	CGCK.KW	NM	0.67	12.02%	0.59	0.158	0.000	27.1	0.251	0.138	(36.4%)	655,247	103,425	87.4%	NM
= United Projects Group	UPAC.KW	60.4	1.28	3.66%	NA	0.465	0.000	91.7	0.512	0.367	(9.2%)	0	0	0.0%	2.1%
= ALAFCO Aviation Lease & Finance Co.*	ALAF.KW	25.3	0.47	5.06%	0.85	0.158	0.000	150.4	0.278	0.138	(41.9%)	739,340	116,405	27.1%	1.9%
▲ Mubarrad Holding Co.	MBRD.KW	14.5	0.49	8.18%	0.94	0.060	0.002	9.8	0.089	0.049	(31.6%)	964,390	57,693	73.1%	3.4%
▲ KGL Logistics Co.	LOGK.KW	NM	0.21	0.00%	0.77	0.028	0.003	20.4	0.043	0.023	(25.5%)	14,657,713	397,150	25.6%	NM
▲ Integrated holding Co.	INTEGRATED.KW	32.2	1.40	7.77%	0.46	0.386	0.016	84.9	0.600	0.342	(29.9%)	2,222,061	849,818	24.1%	4.3%
= Sharjah Cement Co.	SCEM.KW	NM	0.22	0.00%	0.23	0.042	0.000	25.7	0.064	0.042	0.0%	0	0	0.0%	NM
▼ Gulf Cement Co.	GCEM.KW	NM	0.37	0.00%	0.21	0.034	(0.000)	28.2	0.063	0.029	(37.3%)	30,101	1,030	1.7%	NM
▼ Umm Al-Qaiwain General Investments Co.	QIC.KW	NM	0.66	5.48%	0.17	0.091	(0.005)	33.1	0.096	0.052	36.7%	100	9	0.0%	0.4%
▲ Fujairah Cement Industries Co.	FCEM.KW	NM	0.15	0.00%	0.48	0.035	0.000	12.3	0.053	0.029	(23.1%)	95,984	3,327	5.6%	NM
= Ras-Al-Khaimah for White Cement Co.	RKWC.KW	67.2	0.54	7.69%	0.11	0.065	0.000	32.5	0.080	0.053	0.0%	0	0	0.0%	0.8%
Industrials		51.9	0.91	3.70%				2,802.4			(14.8%)	26,890,706	3,642,056		1.7%

Boursa Kuwait Daily Bulletin

Tuesday, September 8, 2020

Company	Reuters Ticker	Valuation Multiples				Price (KWD)		MKT Cap (KWD Mn.)	52 Weeks High (KWD)	52 Weeks Low (KWD)	YTD-20 Return #	Daily Trading Data		YTD-20 Capital Turnover	ROE
		Trailing P/E (X)	Trailing P/BV (X)	Dividend Yield	Beta	Closing	DTD Change					Volume (Shrs.)	Value (KWD)		
= Palms Agro Production Co.	PAPK.KW	15.5	0.56	0.00%	0.23	0.061	0.000	3.2	0.062	0.025	51.7%	0	0	0.7%	3.6%
▲ Livestock Transport & Trading Co.	CATT.KW	24.3	0.96	0.00%	0.27	0.187	0.002	40.5	0.200	0.152	6.9%	17,379	3,214	11.9%	4.0%
= Danah Alsafat Foodstuff Co.	DANK.KW	NM	0.63	0.00%	0.74	0.012	0.000	1.3	0.030	0.010	(25.3%)	0	0	97.4%	NM
▲ Mezzan Holding Co.	MEZZ.KW	30.5	1.79	2.33%	0.46	0.632	0.002	196.8	0.665	0.428	26.4%	279,764	174,201	17.9%	5.8%
Consumer Goods		NM	1.51	1.90%		241.7		241.7			22.5%	297,143	177,416		NM
= Advanced Technology Co.	ATCK.KW	37.5	1.61	1.59%	0.00	0.627	0.000	94.1	0.900	0.580	(22.6%)	0	0	0.0%	4.3%
= Yiacco Medical Co.	YIAC.KW	NM	6.55	0.00%	NA	0.707	0.000	12.1	0.777	0.672	0.1%	0	0	0.0%	NM
= Al-Maidan Clinic For Oral Health Services Co.	MIDAN.KW	51.1	7.58	0.00%	0.00	1.220	0.000	305.0	1.220	1.220	0.0%	0	0	0.0%	14.8%
Health Care		49.2	4.09	0.36%		411.2		411.2			(6.3%)	0	0		8.3%
▲ Kuwait National Cinema Co.	KCIN.KW	28.9	0.92	4.91%	0.27	0.656	0.007	66.3	1.050	0.600	(37.4%)	72,391	47,774	0.8%	3.2%
▼ Kuwait Hotels Co.	KHOT.KW	NM	1.30	0.00%	NA	0.086	(0.002)	5.0	0.101	0.069	(14.0%)	3,000	258	0.1%	NM
▼ Sultan Center Food Products Co.	SCFK.KW	17.3	0.68	0.00%	0.53	0.054	(0.001)	31.3	0.060	0.036	4.0%	71,781	3,916	6.8%	3.9%
= Kuwait Cable Vision Co.	KWTV.KW	NM	0.52	0.00%	0.21	0.014	0.000	0.5	0.026	0.012	0.0%	0	0	0.0%	NM
▼ IFA Hotels & Resorts Co.*	IFAH.KW	NM	1.75	0.00%	0.23	0.024	(0.000)	15.0	0.062	0.021	(57.1%)	37,952	876	3.3%	NM
▲ Oula Fuel Marketing Co.	OULA.KW	32.1	0.72	4.44%	0.46	0.111	0.002	44.9	0.134	0.095	(12.6%)	6,335	694	4.1%	2.2%
= Kuwait Resorts Co.	MUNK.KW	15.1	0.34	0.00%	0.69	0.047	0.000	10.0	0.060	0.038	(18.2%)	385,796	18,101	38.8%	2.3%
▲ Jazeera Airways Co.	JAZK.KW	NM	4.42	6.04%	0.70	0.579	0.010	115.8	1.110	0.372	(47.3%)	144,350	82,756	22.7%	NM
▲ Soor Fuel Marketing Co.	SOOR.KW	20.8	0.69	4.46%	0.46	0.111	0.001	44.9	0.129	0.096	(11.2%)	11,649	1,283	4.7%	3.3%
= Future Kid Entertainment and R.E Co.	KIDK.KW	NM	0.53	15.47%	0.02	0.077	0.000	8.9	0.110	0.069	(13.3%)	0	0	0.6%	NM
= Al Rai Media Group Co.	ALRA.KW	NM	0.86	0.00%	0.26	0.037	0.000	8.6	0.049	0.030	(2.4%)	0	0	0.3%	NM
▼ Jiyad Holding Co	JIYAD.KW	10.1	0.32	0.00%	0.62	0.036	(0.001)	12.5	0.047	0.029	(8.5%)	86,551	3,120	14.0%	3.2%
▼ Al Eid Food Co.	ALEID.KW	4.5	0.35	0.00%	NA	0.064	(0.001)	6.4	0.096	0.046	(19.0%)	275,000	17,348	5.1%	7.8%
Consumer Services		NM	0.93	4.22%		370.1		370.1			(32.9%)	1,094,805	176,127		NM
▲ Zain	ZAIN.KW	12.2	2.02	5.76%	1.39	0.573	0.001	2,479.4	0.604	0.407	(4.5%)	1,870,247	1,073,098	16.8%	16.6%
▲ National Mobile Telecom Co.	OORE.KW	20.4	0.54	8.50%	0.46	0.585	0.004	294.9	0.835	0.550	(29.3%)	324,922	189,026	3.0%	2.7%
▼ AAN digital services Co.	AAN.KW	NM	0.35	0.00%	1.32	0.012	(0.000)	10.1	0.021	0.009	(14.1%)	13,952,659	160,932	141.9%	NM
▲ Kuwait Telecommunication Co.	STC.KW	10.9	2.08	5.81%	0.58	0.860	0.001	429.5	0.870	0.680	9.1%	19,316	16,611	2.2%	19.2%
▼ Hayat Communications Co.	HAYK.KW	8.2	0.57	0.00%	1.22	0.067	(0.004)	6.2	0.098	0.030	(10.8%)	5,200	349	6.1%	7.0%
Telecommunications		12.5	1.60	5.99%		3,220.1		3,220.1			(5.8%)	16,172,344	1,440,016		12.8%
▼ National Bank of Kuwait	NBKK.KW	19.2	1.89	3.86%	1.28	0.851	(0.002)	5,829.5	1.062	0.654	(16.5%)	2,245,652	1,917,588	15.1%	9.8%
▼ Gulf Bank	GBKK.KW	12.5	1.07	4.96%	1.13	0.211	(0.001)	643.2	0.317	0.180	(30.4%)	4,753,092	1,007,292	35.3%	8.6%
▼ Commercial Bank of Kuwait	CBKK.KW	NM	1.42	4.14%	0.39	0.480	(0.020)	956.2	0.555	0.465	(9.3%)	31,656	15,539	1.4%	NM
▲ Ahli Bank of Kuwait	ABKK.KW	NM	0.51	3.90%	0.62	0.178	0.002	288.2	0.320	0.156	(30.5%)	2,006,669	358,975	6.5%	0.3%
▲ Ahli United Bank - Kuwait	BKME.KW	14.0	1.36	4.75%	0.86	0.272	0.002	589.1	0.330	0.225	(16.5%)	544,752	148,003	5.6%	9.7%
▲ Kuwait International Bank	KIBK.KW	26.4	0.78	3.39%	1.00	0.178	0.001	201.6	0.271	0.162	(31.8%)	4,202,245	746,605	92.9%	3.0%
= Burgan Bank	BURG.KW	8.3	0.73	6.05%	1.05	0.198	0.000	519.8	0.340	0.175	(34.9%)	820,097	162,279	14.5%	8.8%
▲ Kuwait Finance House	KFH.KW	23.9	2.57	2.88%	1.42	0.624	0.001	4,788.7	0.761	0.473	(15.4%)	2,613,837	1,631,119	22.2%	10.7%
▲ Boubayan Bank	BOUK.KW	38.0	3.91	1.34%	1.05	0.594	0.011	1,936.6	0.638	0.380	4.8%	2,368,011	1,397,481	5.4%	10.3%
▼ Warba Bank	WARB.KW	NM	1.82	0.00%	0.98	0.211	(0.002)	332.3	0.279	0.164	(19.4%)	13,785,322	2,912,865	33.0%	NM
= Ahli United Bank - Bahrain	AUBK.KW	11.1	1.84	8.05%	1.11	0.224	0.000	2,181.2	0.311	0.160	(23.0%)	7,858,001	1,762,856	35.2%	16.6%
= Ithmaar Bank	ITHMR.KW	NM	24.95	0.00%	0.77	0.022	0.000	67.6	0.025	0.021	0.0%	0	0	0.0%	NM
Banks		20.4	1.82	3.89%		18,333.9		18,333.9			(16.6%)	41,229,334	12,060,601		9.0%

Boursa Kuwait Daily Bulletin

Tuesday, September 8, 2020

Company	Reuters Ticker	Valuation Multiples				Price (KWD)		MKT Cap (KWD Mn.)	52 Weeks High (KWD)	52 Weeks Low (KWD)	YTD-20 Return #	Daily Trading Data		YTD-20 Capital Turnover	ROE
		Trailing P/E (X)	Trailing P/BV (X)	Dividend Yield	Beta	Closing	DTD Change					Volume (Shrs.)	Value (KWD)		
= Kuwait Insurance Co.	KINS.KW	6.4	0.82	7.72%	NA	0.370	0.000	71.8	0.387	0.300	12.1%	0	0	1.1%	12.8%
▲ Gulf Insurance Group	GIN.S.KW	7.4	1.01	6.09%	0.08	0.597	0.032	111.7	0.680	0.550	(9.5%)	71	41	0.1%	13.6%
▼ Ahleiah Insurance Co.	AINS.KW	7.7	0.78	5.91%	0.12	0.396	(0.004)	83.2	0.424	0.367	(2.9%)	3,882	1,537	0.8%	10.1%
▼ Warba Insurance Co.	WINS.KW	12.4	0.39	9.09%	0.36	0.076	(0.002)	13.4	0.094	0.051	24.8%	2,500	189	1.9%	3.1%
= Kuwait Reinsurance Co.	KWRE.KW	8.3	0.75	2.30%	0.02	0.200	0.000	40.8	0.200	0.126	45.0%	0	0	0.1%	9.1%
▼ First Takaful Insurance Co.	FTIK.KW	NM	0.47	0.00%	0.33	0.040	(0.000)	4.2	0.056	0.031	4.5%	51,510	1,953	2.6%	NM
▼ Wethaq Takaful Insurance Co.	WETH.KW	NM	0.22	0.00%	0.38	0.023	(0.001)	2.6	0.035	0.018	(6.8%)	429,153	9,757	12.0%	NM
= Bahrain Kuwait Insurance Co.	BKIK.KW	12.0	0.94	7.50%	0.02	0.200	0.000	28.6	0.220	0.190	0.0%	0	0	0.0%	7.8%
Insurance		9.1	0.80	6.05%				356.2			2.5%	487,116	13,476		8.8%
▼ Sokouk Holding Co.	SHCK.KW	NM	0.39	0.00%	1.16	0.027	(0.001)	15.9	0.040	0.022	(23.9%)	3,225,656	87,308	28.5%	NM
▲ Kuwait Real Estate Co.	KREK.KW	25.8	0.73	0.00%	0.99	0.099	0.002	93.3	0.115	0.070	(6.2%)	1,523,638	149,783	18.0%	2.8%
▲ United Real Estate Co.	UREK.KW	NM	0.33	0.00%	0.38	0.052	0.001	61.8	0.063	0.045	(15.2%)	7,000	364	0.6%	NM
▲ National Real Estate Co.	NREK.KW	23.7	0.38	0.00%	1.15	0.071	0.000	102.1	0.090	0.058	(18.0%)	1,050,317	74,881	16.0%	1.6%
▼ Salhia Real Estate Co.	SREK.KW	6.1	1.22	6.07%	0.34	0.397	(0.003)	203.6	0.460	0.324	(4.8%)	80,000	31,735	5.1%	20.2%
▼ Tamdeen Real Estate Co.	TAMK.KW	NM	0.73	2.02%	0.10	0.241	(0.010)	104.1	0.343	0.248	(24.9%)	17,631	4,334	0.5%	NM
▲ Ajial Real Estate Entertainment Co.	AREC.KW	19.3	0.21	0.00%	0.51	0.135	0.002	26.3	0.213	0.115	(21.7%)	10,105	1,364	3.7%	1.1%
▲ Al Massaleh Real Estate Co.	MREC.KW	NM	0.40	0.00%	0.24	0.035	0.003	8.2	0.040	0.026	(5.4%)	9,700	313	1.5%	NM
▲ Arab Real Estate Co.	ARAB.KW	NM	0.25	0.00%	1.18	0.025	0.001	12.7	0.033	0.020	(15.3%)	1,262,557	31,130	20.9%	NM
▼ AL-Enma'a Real Estate Co.*	ENMA.KW	19.9	0.45	0.00%	0.64	0.045	(0.001)	20.3	0.079	0.037	(28.0%)	967,100	43,734	23.3%	2.3%
▲ Mabane Co.	MABK.KW	23.3	1.52	2.07%	1.09	0.635	0.002	701.7	0.878	0.434	(25.6%)	618,206	394,041	17.2%	6.5%
▼ Injazzat Real Estate Development Co.	INJA.KW	NM	0.51	8.74%	0.20	0.078	(0.001)	27.0	0.091	0.061	(2.5%)	49,950	3,896	1.1%	NM
▲ Investors Holding Group Co.	INVK.KW	NM	0.82	0.00%	1.16	0.017	0.001	10.3	0.017	0.007	106.3%	4,104,485	66,945	223.3%	NM
▲ The Commercial Real Estate Co.	TIJK.KW	18.4	0.60	5.06%	0.53	0.097	0.001	171.7	0.103	0.083	3.7%	1,648,635	158,984	6.3%	3.3%
= Sanam Real Estate Co.	SANK.KW	NM	0.40	0.00%	0.38	0.030	0.000	3.7	0.043	0.027	(25.0%)	0	0	2.4%	NM
▲ A'ayan Real Estate Co.	AYRE.KW	NM	0.35	8.35%	0.57	0.059	0.004	24.5	0.080	0.048	(19.3%)	1,165,749	66,796	2.4%	NM
▼ Aqar Real Estate Investment Co.	AQAR.KW	5.9	0.50	7.42%	NA	0.058	(0.002)	14.3	0.089	0.060	(23.7%)	2,000	116	1.7%	8.5%
▲ Kuwait Real Estate Holding Co.	ALAQ.KW	NM	0.59	0.00%	0.53	0.025	0.002	4.7	0.034	0.023	(13.9%)	50	1	7.9%	NM
▲ MAZAYA Holding Co.	MAZA.KW	NM	0.50	0.00%	0.99	0.053	0.000	36.8	0.067	0.047	(9.8%)	301,254	15,969	14.7%	NM
= Tijara Real Estate & Investment Co.	TIJA.KW	14.3	0.38	5.01%	0.30	0.040	0.000	14.8	0.055	0.034	(20.2%)	0	0	0.2%	2.6%
▲ Al TAMEER Real Estate Investment Co.	AMAR.KW	NM	0.34	0.00%	0.94	0.021	0.001	5.0	0.034	0.013	(21.9%)	20,753,337	425,727	81.2%	NM
▲ Arkan Al-Kuwait Real Estate Co. *	ARKK.KW	8.9	0.61	9.76%	0.22	0.082	0.001	20.6	0.100	0.076	(7.8%)	12,711	1,042	9.0%	6.9%
= Al-Argan International Real Estate Co.	ARGK.KW	NM	0.27	5.80%	0.42	0.083	0.000	22.0	0.141	0.060	(20.9%)	0	0	0.4%	NM
▲ Abyaar Real Estate Development Co.	ABYR.KW	NM	0.20	0.00%	1.21	0.007	0.000	8.0	0.014	0.005	(7.7%)	23,623,946	174,140	56.0%	NM
▲ Munshaat Real Estate Projects Co.	MUNS.KW	NM	0.50	0.00%	0.66	0.064	0.003	20.4	0.085	0.045	(14.2%)	217,388	13,196	5.9%	NM
▲ First Dubai For Real Estate Development	FIRST.KW	NM	0.53	0.00%	1.44	0.040	0.001	40.0	0.055	0.027	12.4%	1,882,110	74,874	27.3%	0.6%
▲ Kuwait Business Town Real Estate Co.	KBTK.KW	10.8	0.24	0.00%	1.05	0.027	0.002	16.6	0.046	0.022	(39.8%)	9,829,798	253,713	34.6%	2.2%
= Real Estate Asset Management Co.	REAM.KW	NM	1.48	0.00%	0.08	0.204	0.000	22.4	0.204	0.060	132.1%	0	0	0.1%	NM
▲ MENA Real Estate Co. *	MENK.KW	NM	0.20	0.00%	0.98	0.028	0.001	3.8	0.043	0.021	(33.1%)	5,223,972	147,103	86.1%	NM
= Al Mudon International Real Estate Co.	ALMK.KW	NM	0.12	0.00%	0.87	0.016	0.000	1.6	0.029	0.015	(35.1%)	0	0	23.7%	NM
▲ Real Estate Trade Centers Co.	MARA.KW	15.9	0.16	0.00%	0.33	0.028	0.002	3.9	0.050	0.018	18.5%	103,048	2,702	27.0%	1.0%
= Kuwait Remal Real Estate Co.	REMA.KW	NM	0.27	0.00%	0.85	0.018	0.000	5.4	0.028	0.013	(28.3%)	205,500	3,559	17.0%	NM
▲ Mashaer Holding Co.	MASHAER.KW	NM	0.50	8.77%	0.53	0.057	0.002	10.2	0.086	0.048	(26.5%)	99,064	5,641	31.2%	NM
= Effect Real Estate Co.	EFFECT.KW	NM	0.29	0.00%	0.44	0.021	0.000	1.7	N/A	N/A	0.0%	0	0	0.0%	NM
= Ajwan Gulf Real Estate Co.	AJWN.KW	NM	0.19	0.00%	0.60	0.011	0.000	2.2	0.016	0.009	(28.7%)	0	0	116.7%	NM
= Al Masaken Intl. Real Estate Dev. Co.	MASKN.KW	NM	0.37	0.00%	0.14	0.031	0.000	3.1	0.074	0.027	(28.6%)	0	0	0.6%	0.4%
= Dalqan Real Estate Co.	DALQ.KW	62.7	2.37	0.00%	NA	0.350	0.000	15.8	0.385	0.333	0.0%	0	0	0.0%	3.8%
▼ Dar Al Thuraya Real Estate Co.	THURY.KW	NM	1.20	0.00%	0.02	0.127	(0.001)	18.6	0.190	0.040	81.2%	52	6	2.1%	0.2%
= Osos Holding Group Co.	OSOS.KW	NM	0.87	7.02%	0.25	0.095	0.000	10.0	0.118	0.084	(5.1%)	0	0	7.0%	NM
▼ KFH Capital REIT	BAITAKREIT.KW	NA	NA	0.00%	NA	1.029	(0.001)	24.3	1.133	0.979	NA	84,156	86,792	3.7%	NA
Real Estate		NM	0.70	2.55%				1,913.1			(15.3%)	78,079,115	2,320,189		NM

Boursa Kuwait Daily Bulletin

Tuesday, September 8, 2020

Company	Reuters Ticker	Valuation Multiples				Price (KWD)		MKT Cap (KWD Mn.)	52 Weeks High (KWD)	52 Weeks Low (KWD)	YTD-20 Return #	Daily Trading Data		YTD-20 Capital Turnover	ROE
		Trailing P/E (X)	Trailing P/BV (X)	Dividend Yield	Beta	Closing	DTD Change					Volume (Shrs.)	Value (KWD)		
▼ Kuwait Investment Co.	KINV.KW	NM	0.68	12.64%	0.71	0.118	(0.005)	65.0	0.172	0.095	(21.3%)	1,485,672	178,313	23.3%	NM
= Commercial Facilities Co.	FACI.KW	NM	0.68	9.41%	0.52	0.181	0.000	97.2	0.235	0.179	(16.6%)	0	0	4.4%	NM
= Int'l Financial Advisors Co.	IFIN.KW	NM	0.99	0.00%	1.32	0.031	0.000	8.2	0.060	0.027	(42.3%)	0	0	32.0%	NM
= National Investment Co.	NINV.KW	NM	0.79	5.73%	1.24	0.143	0.000	125.3	0.155	0.080	3.6%	2,495,542	357,595	32.3%	NM
▼ Kuwait Projects Co.(Holding)	KPRO.KW	5.1	1.40	6.47%	0.57	0.152	(0.001)	304.0	0.231	0.147	(29.6%)	1,969,817	297,886	9.3%	27.3%
▲ Coast Invest. & Development Co.	COAS.KW	NM	0.42	0.00%	1.33	0.034	0.000	21.5	0.045	0.026	(14.0%)	161,459	5,500	18.4%	NM
▲ The Securities House Co.	SECH.KW	NM	0.51	0.00%	1.14	0.045	0.002	24.8	0.063	0.027	(2.0%)	11,040,830	488,326	56.4%	NM
▼ Arzan Financial Group For Fin. & Invest.	ARZA.KW	NM	0.53	0.00%	1.03	0.059	(0.003)	47.2	0.064	0.022	148.1%	18,389,034	1,110,484	185.3%	NM
▼ Kuwait Financial Centre	MARKZ.KW	NM	0.47	6.20%	0.77	0.081	(0.000)	38.8	0.121	0.070	(23.9%)	346,009	27,727	24.8%	NM
▼ Kuwait & M.E. Financial Inv. Co.	KMEF.KW	4.5	1.44	0.00%	0.62	0.127	(0.003)	33.5	0.138	0.063	41.9%	443,547	55,932	19.4%	32.2%
▲ First Investment Co.	OLAK.KW	NM	0.42	0.00%	1.01	0.029	0.001	18.9	0.045	0.022	(15.7%)	739,020	21,125	170.3%	NM
▲ Al-Mal Investment Co.	MALK.KW	NM	0.39	0.00%	1.20	0.009	0.000	2.9	0.016	0.008	(6.1%)	1,429,838	13,294	82.3%	NM
▲ Gulf Investment House	GIHK.KW	NM	1.78	0.00%	1.00	0.099	0.003	63.9	0.100	0.038	53.0%	3,302,209	322,082	19.3%	NM
▲ A'ayan Leasing & Investment Co.	AAYA.KW	NM	0.99	0.00%	1.23	0.079	0.006	63.9	0.073	0.032	68.1%	39,784,164	3,046,105	124.6%	NM
= Bayan Investment Co.	BAYK.KW	NM	0.55	0.00%	0.85	0.048	0.000	18.7	0.053	0.031	25.2%	0	0	5.7%	NM
▲ Osoul Investment Co.	OSUL.KW	NM	0.77	13.32%	0.44	0.082	0.002	12.9	0.121	0.070	9.3%	108,078	8,845	25.5%	NM
▲ Kuwait Finance & Investment Co.	KFSK.KW	NM	0.40	0.00%	0.30	0.046	0.002	15.0	0.058	0.038	(6.3%)	1,700,493	76,454	8.9%	NM
▲ Kamco Investment Co.	KAMC.KW	NM	0.49	7.13%	0.38	0.070	0.002	24.0	0.111	0.060	(21.1%)	863,815	60,909	11.9%	NM
▼ National International Holding Co.	NIHK.KW	7.7	0.37	6.94%	0.67	0.063	(0.006)	14.4	0.081	0.049	(13.5%)	20,737	1,320	3.8%	4.8%
▼ UniCap Investment and Finance	UNICAP.KW	NM	0.53	0.00%	0.65	0.040	(0.002)	9.6	0.057	0.035	(27.5%)	2,154,322	86,875	9.2%	NM
▲ Al Madar Finance & Investment Co.	MADR.KW	17.7	0.86	5.55%	0.34	0.087	0.000	18.6	0.148	0.062	(6.0%)	413,120	35,939	19.8%	4.9%
= Al-Deera Holding	DEER.KW	NM	1.92	0.00%	0.83	0.016	0.000	3.2	0.022	0.011	(20.0%)	0	0	6.1%	NM
▲ Al Salam Group Holding Co.	SAGH.KW	29.8	0.23	0.00%	1.27	0.026	0.001	7.0	0.038	0.018	(11.3%)	34,581,238	896,385	202.5%	0.8%
▼ Ektitab Holding Co.	EKTT.KW	NM	0.36	0.00%	1.00	0.015	(0.000)	4.7	0.017	0.010	(1.3%)	2,662,062	39,747	40.8%	NM
= Al Madina For Finance & Investment Co.	MADI.KW	NM	0.43	0.00%	1.21	0.012	0.000	5.0	0.019	0.009	(18.0%)	6,491,612	80,022	145.7%	NM
= NOOR Financial Investment Co.	NOOR.KW	7.7	1.19	3.59%	1.24	0.167	0.000	69.0	0.184	0.076	40.3%	453,388	74,087	52.2%	15.4%
▼ Tamdeen Investment Co.	TAMI.KW	NM	0.60	3.56%	0.33	0.336	(0.017)	115.9	0.400	0.199	(2.6%)	11	4	0.3%	NM
▼ Kuwait Syrian Holding Co.	KSHC.KW	NM	0.23	0.00%	0.73	0.025	(0.002)	4.4	0.043	0.022	(20.0%)	13,911	351	25.1%	NM
▲ Asiya Capital Investment Co.	ASIYA.KW	NM	0.36	0.00%	0.52	0.032	0.001	25.3	0.041	0.029	(22.7%)	78,512	2,470	1.1%	NM
= Gulf North Africa Holding Co.	GNAH.KW	NM	0.75	0.00%	1.10	0.056	0.000	8.4	0.062	0.052	(10.2%)	0	0	3.9%	NM
= Amwal International Investment Co.	AMWA.KW	NM	0.65	0.00%	0.39	0.034	0.000	6.2	0.055	0.030	14.3%	0	0	0.0%	NM
▲ Alimtiq Investment Group	ALIMK.KW	NM	0.51	8.57%	0.95	0.090	0.001	101.5	0.137	0.071	(29.0%)	4,039,493	359,307	36.1%	NM
= Tamkeen Holding Co.	TAMKE.KW	NM	0.05	0.00%	NA	0.005	0.000	0.3	N/A	N/A	0.0%	0	0	0.0%	NM
▲ Manazel Holding Co.	MANK.KW	9.5	0.71	0.00%	1.38	0.033	0.001	14.1	0.048	0.021	(16.6%)	1,458,284	47,360	39.7%	7.5%
▲ National Industries Group	NIND.KW	NM	0.73	6.17%	1.42	0.162	0.001	231.3	0.247	0.121	(32.8%)	3,126,014	503,142	36.3%	NM
= Warba Capital Holding Co.	WARBACAP.KW	NM	0.56	0.00%	0.70	0.047	0.000	4.7	0.070	0.045	(26.5%)	0	0	8.6%	NM
= Arabi Holding Group Co.	AGHC.KW	NM	1.23	0.00%	0.15	0.198	0.000	34.2	0.337	0.076	(27.7%)	0	0	3.1%	NM
▼ Privatization Holding Co.	KPPC.KW	NM	0.32	0.00%	0.79	0.041	(0.001)	25.0	0.059	0.037	(17.2%)	185,000	7,588	5.5%	NM
= Credit Rating & Collection Co.	TAHS.KW	NM	1.13	0.00%	NA	0.035	0.000	5.8	0.037	0.019	76.0%	0	0	0.2%	NM
▼ Egypt Kuwait Holding Co.	ECHK.KW	12.1	2.53	0.00%	0.16	0.370	(0.004)	379.0	0.500	0.318	(17.8%)	65	24	0.0%	20.9%
▲ GFH Financial Group	GFH.KW	18.8	1.00	7.77%	0.87	0.052	0.001	264.0	0.074	0.042	(25.0%)	843,425	42,972	1.5%	5.3%
▲ Inovest	INOV.KW	8.8	0.47	7.00%	0.71	0.068	0.001	20.5	0.072	0.044	6.6%	501,405	34,307	5.2%	5.4%
= Al Bareeq Holding	BAREEQ.KW	39.4	1.68	0.00%	0.04	0.102	0.000	77.0	0.110	0.100	2.0%	0	0	1.7%	4.3%
= Amar For Finance and Leasing Co.	AMARF.KW	NM	0.58	0.00%	0.07	0.049	0.000	9.9	0.064	0.037	30.0%	0	0	10.9%	NM
▲ Al-Manar Financing & Leasing Co.	ALMANAR.KW	NM	0.47	0.00%	NA	0.049	0.003	15.2	0.060	0.037	(5.2%)	100	5	6.7%	NM
Financial Services		NM	0.84	4.21%				2,459.9			(11.1%)	141,282,226	8,282,482		NM

Boursa Kuwait Daily Bulletin

Tuesday, September 8, 2020

Company	Reuters Ticker	Valuation Multiples				Price (KWD)		MKT Cap (KWD Mn.)	52 Weeks High (KWD)	52 Weeks Low (KWD)	YTD-20 Return #	Daily Trading Data		YTD-20 Capital Turnover	ROE
		Trailing P/E (X)	Trailing P/BV (X)	Dividend Yield	Beta	Closing	DTD Change					Volume (Shrs.)	Value (KWD)		
▲ Automated Systems Co.	ASCK.KW	NM	0.57	5.73%	0.12	0.070	0.003	7.0	0.086	0.051	(1.4%)	74,349	4,890	1.6%	NM
Technology		NM	0.57	5.73%				7.0			(1.4%)	74,349	4,890		NM
▲ Shamal Az-Zour Al-Oula Power and Water Co.	AZNOULA.KW	29.1	4.67	0.00%	2.22	0.325	0.001	357.5	0.500	0.297	N/A	4,493,541	1,457,797	25.9%	16.1%
Utilities		29.1	4.67	0.00%				357.5			N/A	4,493,541	1,457,797		16.1%
Boursa Kuwait		26.9	1.37	4.01%				31,401.6			(13.60%)	346,764,008	30,956,524		5.1%

Year-to-Date 2020 Top Movers & Most Active Stocks

YTD Top % Gainers	Close (KWD)	Percent Change
Arzan Financial Group For Fin. & Invest.	0.059	148.1%
Real Estate Asset Management Co.	0.204	132.1%
Investors Holding Group Co.	0.017	106.3%
Dar Al Thuraya Real Estate Co.	0.127	81.2%
Credit Rating & Collection Co.	0.035	76.0%
YTD Most Active by Volume	Close (KWD)	Volume (Shrs.)
Ahli United Bank - Bahrain	0.224	3,430,768,961
Kuwait Finance House	0.624	1,706,968,708
Gulf Petroleum Investment	0.022	1,503,029,119
Arzan Financial Group For Fin. & Invest.	0.059	1,488,093,613
Investors Holding Group Co.	0.017	1,390,814,897

YTD Top % Losers	Close (KWD)	Percent Change
IFA Hotels & Resorts Co.	0.024	(57.1%)
Jazeera Airways Co.	0.579	(47.3%)
Int'l Financial Advisors Co.	0.031	(42.3%)
ALAFCO Aviation Lease & Finance Co.	0.158	(41.9%)
Kuwait Business Town Real Estate Co.	0.027	(39.8%)
YTD Most Active by Value	Close (KWD)	Value (KWD)
Kuwait Finance House	0.624	1,115,606,413
National Bank of Kuwait	0.851	871,152,146
Ahli United Bank - Bahrain	0.224	743,358,759
Zain	0.573	389,200,188
Agility (PWC Logistics)	0.621	311,668,858

* Different Fiscal Year Company

Disclaimer & Important Disclosures

Kamco Invest is authorized and fully regulated by the Capital Markets Authority ("CMA, Kuwait") and partially regulated by the Central Bank of Kuwait ("CBK").

This document is provided for informational purposes only. Nothing contained in this document constitutes investment, an offer to invest, legal, tax or other advice or guidance and should be disregarded when considering or making investment decisions. In preparing this document, Kamco Invest did not take into account the investment objectives, financial situation and particular needs of any particular person. Accordingly, before acting on this document, investors should independently evaluate the investments and strategies referred to herein and make their own determination of whether it is appropriate in light of their own financial circumstances and objectives. The entire content of this document is subject to copyright with all rights reserved. This research and the information contained herein may not be reproduced, distributed or transmitted in Kuwait or in any other jurisdiction to any other person or incorporated in any way into another document or other material without our prior written consent.

Analyst Certification

Each of the analysts identified in this report, if any and where applicable, certifies, with respect to the sector, companies or securities that the individual analyses, that (1) the views expressed in this report reflect his or her personal views about all of the subject companies and securities and (2) no part of his or her compensation was, is or will be directly or indirectly dependent on the specific recommendations or views expressed in this report.

Kamco Invest Ratings

Kamco Invest research is based on the analysis of regional and country economics, industries and company fundamentals. Kamco Invest company research reflects a long-term (12-month) target price for a company or stock. The ratings bands are:

* **Outperform:** Target Price represents expected returns >= 10% in the next 12 months

* **Neutral:** Target Price represents expected returns between 10% and <10% in the next 12 months

* **Underperform:** Target Price represents an expected return of <-10% in the next 12 months

In certain circumstances, ratings may differ from those implied by a fair value target using the criteria above. Kamco Invest policy is to maintain up-to-date fair value targets on the companies under its coverage, reflecting any material changes to the analyst's outlook on a company. Share price volatility may cause a stock to move outside the rating range implied by Kamco Invest's fair value target. Analysts may not necessarily change their ratings if this happens, but are expected to disclose the rationale behind their view to Kamco Invest clients.

Any terms and conditions proposed by you which are in addition to or which conflict with this Disclaimer are expressly rejected by Kamco Invest and shall be of no force or effect. The information contained in this document is based on current trade, statistical and other public information we consider reliable. We do not represent or warrant that such information is fair, accurate or complete and it should not be relied upon as such. Kamco Invest has no obligation to update, modify or amend this document or to otherwise notify a recipient thereof in the event that any opinion, forecast or estimate set forth herein, changes or subsequently becomes inaccurate. The publication is provided for informational uses only and is not intended for trading purposes. The information on publications does not give rise to any legally binding obligation and/or agreement, including without limitation any obligation to update such information. You shall be responsible for conducting your own investigation and analysis of the information contained or referred to in this document and of evaluating the merits and risks involved in the securities forming the subject matter of this or other such document. Moreover, the provision of certain data/information in the publication may be subject to the terms and conditions of other agreements to which Kamco Invest is a party.

Nothing in this document should be construed as a solicitation or offer, or recommendation, to acquire or dispose of any investment or to engage in any other transaction, or to provide any investment advice or service. This document is directed at Professional Clients and not Retail Clients within the meaning of CMA rules. Any other persons in receipt of this document must not rely upon or otherwise act upon it. Entities and individuals

*Kamco Investment Company (DIFC) Limited ("Kamco Invest DIFC"), Office 205, Level 2, Gate Village 1, Dubai International Financial Centre, a wholly owned subsidiary of Kamco Investment Company KSC (Public), is regulated by the Dubai Financial Services Authority (DFSA). Kamco Invest DIFC may only undertake the financial services activities that fall within the scope of its existing DFSA licence. The information in this document may be distributed by Kamco Invest DIFC on behalf of Kamco Investment Company KSC (Public). This document is intended for Professional Clients or Market Counterparties only as defined by the DFSA, and no other person should act upon it.

This document may not be distributed in Saudi Arabia except to such persons as are permitted under the Offers of Securities Regulations issued by the Capital Market Authority. The Capital Market Authority does not make any representation as to the accuracy or completeness of this document, and expressly disclaims any liability whatsoever for any loss arising from, or incurred in reliance upon, any part of this document. The recipients of this document hereby should conduct their own due diligence on the accuracy of the information relating to the contents of this document. If you do not understand the contents of this document you should consult an authorized financial advisor.

Risk Warnings

Any prices, valuations or forecasts are indicative and are not intended to predict actual results, which may differ substantially from those reflected. The value of an investment may go up as well as down. The value of and income from any investment may fluctuate from day to day as a result of changes in relevant economic markets (including, without limitation, foreseeable or unforeseeable changes in interest rates, foreign exchange rates, default rates, prepayment rates, political or financial conditions, etc.).

Past performance is not indicative of future results. Any opinions, estimates, valuations or projections (target prices and ratings in particular) are inherently imprecise and a matter of judgment. They are statements of opinion and not of fact, based on current expectations, estimates and projections, and rely on beliefs and assumptions. Actual outcomes and returns may differ materially from what is expressed or forecasted. There are no guarantees of future performance. Certain transactions, including those involving futures, options, and other derivatives, give rise to substantial risk and are not suitable for all investors. This document does not propose to identify or to suggest all of the risks (direct or indirect) which may be associated with the investments and strategies referred to herein.

Conflict of Interest

Kamco Invest and its affiliates provide full investment banking services, and they and their directors, officers and employees, may take positions which conflict with the views expressed in this document. Salespeople, traders, and other professionals of Kamco Invest may provide oral or written market commentary or trading strategies to our clients and our proprietary trading desks that reflect opinions that are contrary to the opinions expressed in this document. Our asset management area, our proprietary trading desks and investing businesses may make investment decisions that are inconsistent with the recommendations or views expressed in this document. Kamco Invest may have or seek investment banking or other business relationships for which it will receive compensation from the companies that are the subject of this document. Facts and views presented in this document have not been reviewed by, and may not reflect information known to, professionals in other Kamco Invest business areas, including investment banking personnel. United Gulf Bank, Bahrain owns majority of Kamco Invest's shareholding and this ownership may create, or may create the appearance of, conflicts of interest.

No Liability & Warranty

Kamco Invest makes neither implied nor expressed representations or warranties and, to the fullest extent permitted by applicable law, we hereby expressly disclaim any and all express, implied and statutory representations and warranties of any kind, including, without limitation, any warranty as to accuracy, timeliness, completeness, and fitness for a particular purpose and/or non-infringement. Kamco Invest will accept no liability in any event including (without limitation) your reliance on the information contained in this document, any negligence for any damages or loss of any kind, including (without limitation) direct, indirect, incidental, special or consequential damages, expenses or losses arising out of, or in connection with your use or inability to use this document, or in connection with any error, omission, defect, computer virus or system failure, or