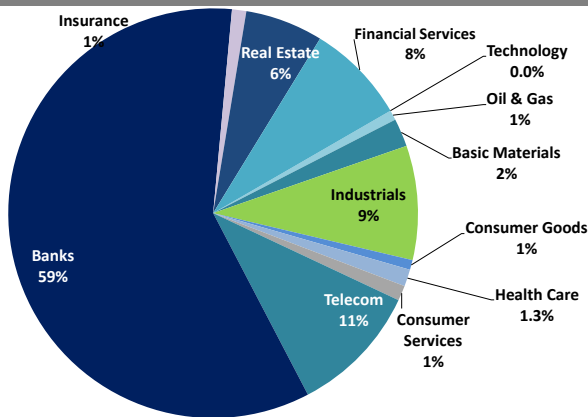


Boursa Kuwait Daily Report

September 7, 2020

Sector Weight by Market Cap



Top 10 Companies by Market Capitalization

Company Name	Market Cap. (Mn KWD)	P/E (X)	ROE* (%)
1- National Bank of Kuwait	5,843.2	19.3	9.8%
2- Kuwait Finance House	4,781.0	23.9	10.7%
3- Zain	2,475.1	12.2	16.6%
4- Ahli United Bank - Bahrain	2,181.2	11.1	16.6%
5- Boubyan Bank	1,900.7	37.3	10.3%
6- Agility (PWC Logistics)	1,261.0	20.6	5.5%
7- Commercial Bank of Kuwait	996.0	NM	NM
8- Mabane Co.	699.5	23.2	6.5%
9- Gulf Bank	646.2	12.6	8.6%
10- Ahli United Bank - Kuwait	584.8	13.9	9.7%
Total	21,369	18.89	10.2%

*: ROE is calculated based on TTM 1H-2020 net profit & shareholders' equity as of 30-June-20

Top Movers and Most Active Stocks

Today's Top % Gainers	Close (KWD)	Change (KWD)	Percent Change
A'ayan Leasing & Investment Co.	0.073	0.006	9.5%
Kuwait Portland Cement Co.	0.800	0.063	8.5%
Sokouk Holding Co.	0.027	0.002	7.9%
Burgan Co. for Drilling, Tdg. & Maint.	0.076	0.006	7.8%
Fujairah Cement Industries Co.	0.035	0.002	6.2%




Today's Top % Losers	Close (KWD)	Change (KWD)	Percent Change
Hilal Cement Co.	0.094	(0.020)	(17.6%)
Gulf Franchising Co.	0.053	(0.006)	(9.6%)
Automated Systems Co.	0.067	(0.007)	(9.5%)
Hayat Communications Co.	0.070	(0.004)	(5.0%)
Al Eid Food Co.	0.065	(0.003)	(4.6%)

Today's Most Active by Volume	Close (KWD)	Percent Change	Volume (Shares)
AAN Digital Services Co.	0.012	2.6%	42,586,896
Arzan Financial Group For Fin. & Invest.	0.061	4.1%	28,478,920
Warba Bank	0.213	(1.8%)	27,680,603
Gulf Petroleum Investment	0.021	1.0%	21,254,983
Ahli United Bank - Bahrain	0.224	(1.3%)	12,577,343

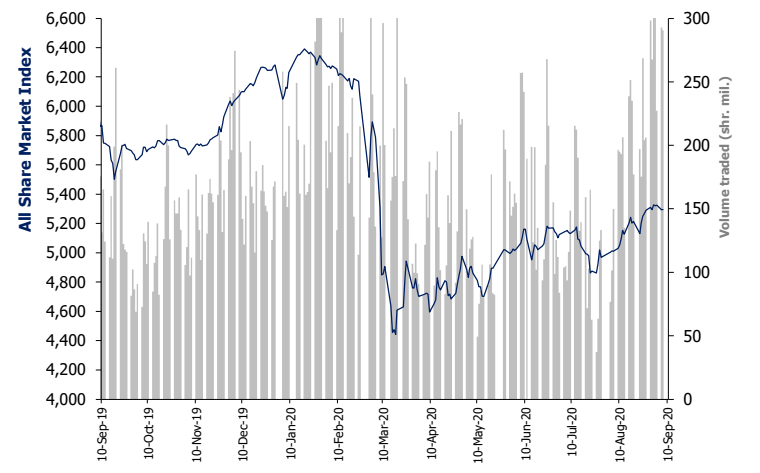
Source: Boursa Kuwait, Kamco Invest Research

Market Capitalization - Sector Returns

	Market Cap. (KWD Mn)	DTD %	DTD % Chg	MTD % Chg	YTD % Chg
Boursa Kuwait	31,368.7	▼	(0.0%)	0.1%	(13.7%)
Oil & Gas	238.9	▲	0.6%	(1.1%)	(7.3%)
Basic Materials	688.8	▼	(0.1%)	(0.9%)	(14.8%)
Industrials	2,798.0	▲	0.4%	1.6%	(15.0%)
Consumer Goods	240.7	▼	(2.3%)	(2.4%)	21.9%
Health Care	411.2	=	0.0%	0.0%	(6.3%)
Consumer Services	367.1	▼	(0.2%)	(0.2%)	(33.5%)
Telecommunications	3,213.6	▲	0.1%	(2.1%)	(6.0%)
Banks	18,341.4	▼	(0.1%)	(0.5%)	(16.6%)
Insurance	351.4	▼	(0.4%)	(0.1%)	1.2%
Real Estate	1,904.9	▲	0.1%	2.5%	(15.7%)
Financial Services	2,449.5	▲	0.4%	4.6%	(11.5%)
Technology	6.6	▼	(9.5%)	(2.6%)	(6.1%)
Utilities	356.4	▼	-1.2%	1.3%	N/A

Market Breadth	 59	 46	 69		
Benchmark Return	Closing	DTD	DTD	MTD	YTD
	Value	Chg	% Chg	% Chg	% Chg
Premier Market Index	5,807.89	(7.8)	(0.1%)	(0.8%)	(16.7%)
Main 50 Index	4,306.19	29.8	0.7%	3.0%	(13.7%)
Main Market Index	4,281.94	16.1	0.4%	2.3%	(12.8%)
All Share Market Index	5,294.71	0.0	0.0%	0.0%	(15.7%)
Market Cap (KWD Mn)	31,368.70	(0.3)	(0.0%)	0.1%	(13.7%)

Index Performance relative to Volume



Market Trading Data and Volatility

Trading Indicators	Today's Value	DTD Chg	DTD % Chg	Average Daily YTD 2020	YTD 2019
Volume (Shrs Mn)	290.5	(2.3)	(0.8%)	177.3	88.6
Value Traded (KWD Mn)	34.9	(2.9)	(7.6%)	34.6	16.9
No. of Trades	9,709	(107)	(1.09%)	8,238	3,810

Today's Most Active by Value	Close (KWD)	Percent Change	Value (KWD)
Warba Bank	0.213	(1.8%)	5,980,792
National Bank of Kuwait	0.853	0.1%	3,294,810
Ahli United Bank - Bahrain	0.224	(1.3%)	2,839,372
Kuwait Finance House	0.623	0.0%	2,191,500
Kuwait International Bank	0.177	1.1%	1,995,438

Boursa Kuwait - Premier Market

Monday, September 7, 2020

	Premier Market Stocks	Closing Price			Market Capitalization			Valuation Multiples				ROE	YTD-20 Price Return	YTD-20 Trading Indicators	
		KWD	DTD Chg. (KWD)	D-T-D Return	KWD Mn	Weight in Premier Index	Weight in Boursa Kuwait	P/E (X)	P/BV (X)	Yield	Beta			Volume (Mn Shrs)	Value (KWD Mn)
▲	National Bank of Kuwait	0.853	0.001	0.1%	5,843	25.5%	18.6%	19.3	1.90	3.9%	1.28	9.8%	(16.3%)	1,030.95	869.23
▼	Gulf Bank	0.212	(0.001)	(0.5%)	646	2.8%	2.1%	12.6	1.08	4.9%	1.13	8.6%	(30.0%)	1,069.92	240.85
▲	Kuwait International Bank	0.177	0.002	1.1%	200	0.9%	0.6%	26.2	0.77	3.4%	1.00	3.0%	(32.2%)	1,048.27	201.50
▼	Burgan Bank	0.198	(0.001)	(0.5%)	520	2.3%	1.7%	8.3	0.73	6.0%	1.05	8.8%	(34.9%)	379.81	83.62
=	Kuwait Finance House	0.623	0.000	0.0%	4,781	20.9%	15.2%	23.9	2.57	2.9%	1.42	10.7%	(15.5%)	1,704.35	1,113.98
=	Boubyan Bank	0.583	0.000	0.0%	1,901	8.3%	6.1%	37.3	3.84	1.4%	1.05	10.3%	2.8%	172.56	92.22
▲	Kuwait Projects Co. (Holding)	0.153	0.002	1.3%	306	1.3%	1.0%	5.2	1.41	6.4%	0.57	27.3%	(29.2%)	183.51	30.57
▼	Mabane Co.	0.633	(0.001)	(0.2%)	700	3.1%	2.2%	23.2	1.51	2.1%	1.09	6.5%	(25.9%)	189.20	123.65
▲	National Industries Group (Holding)	0.161	0.002	1.3%	230	1.0%	0.7%	NM	0.72	6.2%	1.42	NM	(33.2%)	515.46	94.38
▲	Boubyan Petrochemical Co.	0.541	0.001	0.2%	289	1.3%	0.9%	24.5	1.30	6.3%	0.73	5.3%	(19.0%)	67.80	38.36
▼	Qurain Petrochemicals Industries Co.	0.277	(0.001)	(0.4%)	304	1.3%	1.0%	11.8	0.72	5.5%	0.76	6.1%	(10.6%)	126.67	33.08
▼	Agility Public Warehousing Co.	0.622	(0.001)	(0.2%)	1,261	5.5%	4.0%	20.6	1.14	0.7%	1.47	5.5%	(12.6%)	476.25	311.13
▲	Mobile Telecommunications Co.	0.572	0.001	0.2%	2,475	10.8%	7.9%	12.2	2.02	5.8%	1.39	16.6%	(4.7%)	727.06	388.13
▲	Human Soft Holding Co.	2.619	0.005	0.2%	320	1.4%	1.0%	12.2	3.64	7.0%	0.47	29.9%	(13.0%)	39.61	109.26
▼	Ahli United Bank (B.S.C)	0.224	(0.003)	(1.3%)	2,181	9.5%	7.0%	11.1	1.84	8.0%	1.11	16.6%	(23.0%)	3,422.91	741.60
▼	Warba Bank	0.213	(0.004)	(1.8%)	335	1.5%	1.1%	NM	1.84	0.0%	0.98	NM	(18.7%)	506.68	107.79
▼	Mezzan Holding Co.	0.630	(0.020)	(3.1%)	196	0.9%	0.6%	30.4	1.78	2.3%	0.46	5.8%	26.0%	55.51	30.55
▲	Integrated Holding Co.	0.370	0.018	5.1%	81	0.4%	0.3%	30.8	1.34	8.1%	0.46	4.3%	(32.8%)	50.77	23.51
▼	Shamal Az-Zour Al-Oula Power and Water	0.324	(0.004)	(1.2%)	356	1.6%	1.1%	29.0	4.65	0.0%	2.24	16.1%	NA	280.00	97.34
Subtotal- Premier Market Stocks		5,807.89	(7.82)	-0.13%	22,927	100%	73%	18.4	1.81	3.94%		9.8%	-15.7%	12,047.29	4,730.74
Remaining of the Market					8,441		27%	(108.2)	0.82	4.22%		-0.8%		16,673.94	881.52

Source: Kamco Research

Boursa Kuwait Daily Bulletin

Monday, September 7, 2020

Company	Reuters Ticker	Valuation Multiples				Price (KWD)		MKT Cap (KWD Mn.)	52 Weeks High (KWD)	52 Weeks Low (KWD)	YTD-20 Return #	Daily Trading Data		YTD-20 Capital Turnover	ROE
		Trailing P/E (X)	Trailing P/BV (X)	Dividend Yield	Beta	Closing	DTD Change					Volume (Shrs.)	Value (KWD)		
▼ Senergy Holding Co.	SENE.KW	NM	0.33	0.00%	1.13	0.017	(0.000)	3.3	0.027	0.014	(24.2%)	1,236,217	20,335	25.1%	NM
= Independent Petroleum Group	IPGK.KW	14.1	0.98	5.62%	0.28	0.430	0.000	96.6	0.497	0.375	(10.8%)	0	0	0.3%	7.0%
= National Petroleum Services Co.	NAPS.KW	11.3	2.65	6.93%	0.22	0.980	0.000	98.0	1.389	0.903	(16.2%)	0	0	0.2%	23.4%
= The Energy House Co.	ENER.KW	NM	0.70	0.00%	0.94	0.022	0.000	16.4	0.036	0.014	(3.9%)	344,921	7,104	5.8%	NM
▲ Gulf Petroleum Investment	GPIK.KW	NM	0.15	0.00%	1.07	0.021	0.000	6.2	0.025	0.012	4.5%	21,254,983	449,343	495.5%	NM
▲ Burgan Co. for Drilling, Tdg. & Maint. *	ABAR.KW	13.9	0.28	0.00%	NA	0.076	0.006	18.4	0.098	0.060	(5.2%)	5,500	409	0.1%	2.0%
Oil & Gas		28.5	0.87	5.11%				238.9			(7.3%)	22,841,621	477,191		3.1%
▲ Kuwait Foundry Co.	KFDC.KW	37.0	0.87	6.25%	0.66	0.240	0.001	17.4	0.510	0.192	(28.4%)	51,939	12,445	2.2%	2.3%
▲ Boubyan Petrochemicals Co.*	BPCC.KW	24.5	1.30	6.29%	0.73	0.541	0.001	289.3	0.800	0.395	(19.0%)	163,118	88,066	12.7%	5.3%
= Al Kout for Industrial Projects Co.	ALKK.KW	27.8	2.84	6.50%	0.02	0.769	0.000	77.6	0.850	0.769	(9.5%)	0	0	0.0%	10.2%
▼ Qurain Petrochemical Industries Co. *	ALQK.KW	11.8	0.72	5.47%	0.76	0.277	(0.001)	304.5	0.341	0.163	(10.6%)	88,381	24,529	11.5%	6.1%
Basic Materials		16.8	0.99	5.95%				688.8			(14.8%)	303,438	125,040		5.9%
▲ Specialities Group Holding Co.	SPEC.KW	11.1	0.34	0.00%	0.39	0.066	0.000	9.9	0.086	0.055	(21.6%)	544,501	35,951	27.6%	3.0%
= Kuwait Cement Co.	KCEM.KW	NM	0.73	2.79%	0.46	0.174	0.000	127.6	0.271	0.144	(29.3%)	459,025	79,614	7.6%	NM
▲ Gulf Cable & Electrical Ind. Co.	CABL.KW	37.1	0.95	5.46%	0.91	0.733	0.021	153.9	0.714	0.390	50.2%	1,711,601	1,242,175	40.2%	2.6%
▼ Heavy Eng'g Ind. & Shipbuilding Co.	SHIP.KW	6.1	0.99	8.15%	0.60	0.368	(0.002)	66.3	0.419	0.298	(9.1%)	169,380	62,403	22.6%	16.2%
▲ Kuwait Portland Cement Co.	PCEM.KW	NM	1.31	5.00%	0.46	0.800	0.063	80.2	1.210	0.683	(18.5%)	126,053	96,454	5.6%	0.9%
▲ Shuaiba Industrial Co.	PAPE.KW	25.1	0.73	3.79%	0.12	0.130	0.005	13.1	0.180	0.122	(16.1%)	64,483	8,383	0.6%	2.9%
= Metal & Recycling Co.	MRCK.KW	NM	0.48	0.00%	0.21	0.041	0.000	4.8	0.070	0.020	(18.0%)	49,960	2,048	1.8%	NM
= ACICO Industries Co.	ACIC.KW	NM	0.39	5.29%	0.37	0.099	0.000	29.9	0.145	0.081	(25.6%)	0	0	5.6%	NM
▼ Hilal Cement Co.	HCCCK.KW	NM	0.89	15.97%	0.11	0.094	(0.020)	9.5	0.126	0.063	(6.1%)	14,544	1,419	0.5%	NM
▼ National Industries Co.	NIBM.KW	NM	0.73	6.18%	0.15	0.156	(0.001)	58.1	0.176	0.143	(5.5%)	500	78	0.3%	NM
▲ Equipment Holding Co.	EQUI.KW	NM	0.38	0.00%	1.03	0.017	0.000	2.3	0.024	0.013	(23.7%)	1,697,920	27,800	20.7%	NM
= National Co. for Consumer Industries	NCCI.KW	57.3	0.57	0.00%	NA	0.052	0.000	4.7	0.100	0.010	(5.1%)	0	0	0.4%	1.0%
▼ Salbookh Trading Co.	SALB.KW	NM	0.46	0.00%	0.61	0.031	(0.001)	3.2	0.051	0.026	(39.1%)	120,800	3,681	23.2%	NM
▼ Agility (PWC Logistics)	AGLT.KW	20.6	1.14	0.66%	1.47	0.622	(0.001)	1,261.0	0.748	0.357	(12.6%)	516,958	322,232	23.5%	5.5%
= Educational Holding Group*	EDUK.KW	8.9	1.65	19.88%	0.45	0.299	0.000	73.3	0.475	0.228	(31.9%)	0	0	0.9%	18.6%
▼ National Cleaning Co.	CLEA.KW	66.0	0.37	9.14%	0.82	0.053	(0.002)	13.3	0.088	0.047	(23.0%)	139,175	7,512	22.5%	0.6%
▼ Kuwait & Gulf Link Transport Co.	KGLK.KW	NM	0.22	0.00%	0.76	0.045	(0.001)	13.1	0.080	0.042	(31.9%)	368,500	16,608	12.1%	NM
▲ Kuwait Co. For Process Plant Const. & Cont.	KCPC.KW	6.9	1.28	6.91%	0.47	0.318	0.007	35.1	0.338	0.175	32.0%	912,640	288,472	33.9%	18.7%
▲ Humansoft Holding Co.	HUMN.KW	12.2	3.64	7.03%	0.47	2.619	0.005	320.1	3.470	1.944	(13.0%)	75,983	198,775	32.4%	29.9%
▼ Gulf Franchising Co.	GFIC.KW	NM	1.30	0.00%	NA	0.053	(0.006)	2.1	0.148	0.001	(29.7%)	17,044	907	0.6%	NM
▼ National Shooting Co.	SHOOTING.KW	NM	0.27	0.00%	1.24	0.015	(0.001)	4.1	0.018	0.007	48.0%	438,163	6,559	73.0%	NM
▲ Combined Group Contracting Co.	CGCK.KW	NM	0.67	12.02%	0.59	0.158	0.002	27.1	0.251	0.138	(36.4%)	1,339,615	212,409	87.0%	NM
= United Projects Group	UPAC.KW	60.4	1.28	3.66%	NA	0.465	0.000	91.7	0.512	0.367	(9.2%)	0	0	0.0%	2.1%
= ALAFCO Aviation Lease & Finance Co.*	ALAF.KW	25.3	0.47	5.06%	0.85	0.158	0.000	150.4	0.278	0.138	(41.9%)	737,211	116,101	27.0%	1.9%
▼ Mubarrad Holding Co.	MBRD.KW	14.1	0.48	8.39%	0.94	0.059	(0.002)	9.6	0.089	0.049	(33.3%)	111,404	6,499	72.5%	3.4%
▼ KGL Logistics Co.	LOGK.KW	NM	0.19	0.00%	0.77	0.025	(0.000)	18.5	0.043	0.023	(32.7%)	1,150,622	28,927	23.7%	NM
▲ Integrated holding Co.	INTEGRATED.KW	30.8	1.34	8.11%	0.46	0.370	0.018	81.4	0.600	0.342	(32.8%)	1,382,192	503,568	23.1%	4.3%
= Sharjah Cement Co.	SCEM.KW	NM	0.22	0.00%	0.23	0.042	0.000	25.7	0.064	0.042	0.0%	0	0	0.0%	NM
▲ Gulf Cement Co.	GCEM.KW	NM	0.37	0.00%	0.21	0.035	0.000	28.3	0.063	0.029	(37.2%)	307,219	10,599	1.7%	NM
= Umm Al-Qaiwain General Investments Co.	QIC.KW	NM	0.69	5.21%	0.17	0.096	0.000	34.8	0.096	0.052	43.9%	0	0	0.0%	0.4%
▲ Fujairah Cement Industries Co.	FCEM.KW	NM	0.15	0.00%	0.48	0.035	0.002	12.3	0.053	0.029	(23.3%)	211,558	7,203	5.6%	NM
= Ras-Al-Khaimah for White Cement Co.	RKWC.KW	67.2	0.54	7.69%	0.11	0.065	0.000	32.5	0.080	0.053	0.0%	0	0	0.0%	0.8%
Industrials		51.8	0.91	3.70%				2,798.0			(15.0%)	12,667,051	3,286,379		1.7%

Boursa Kuwait Daily Bulletin

Monday, September 7, 2020

Company	Reuters Ticker	Valuation Multiples				Price (KWD)		MKT Cap (KWD Mn.)	52 Weeks High (KWD)	52 Weeks Low (KWD)	YTD-20 Return #	Daily Trading Data		YTD-20 Capital Turnover	ROE
		Trailing P/E (X)	Trailing P/BV (X)	Dividend Yield	Beta	Closing	DTD Change					Volume (Shrs.)	Value (KWD)		
= Palms Agro Production Co.	PAPK.KW	15.5	0.56	0.00%	0.23	0.061	0.000	3.2	0.062	0.025	51.7%	0	0	0.7%	3.6%
▲ Livestock Transport & Trading Co.	CATT.KW	24.0	0.95	0.00%	0.27	0.185	0.003	40.1	0.200	0.152	5.7%	51,500	9,438	11.9%	4.0%
= Danah Alsafat Foodstuff Co.	DANK.KW	NM	0.63	0.00%	0.74	0.012	0.000	1.3	0.030	0.010	(25.3%)	0	0	97.4%	NM
▼ Mezzan Holding Co.	MEZZ.KW	30.4	1.78	2.34%	0.46	0.630	(0.020)	196.1	0.665	0.428	26.0%	102,211	65,804	17.8%	5.8%
Consumer Goods		NM	1.50	1.90%		240.7		21.9%	153,711	75,242	NM				
= Advanced Technology Co.	ATCK.KW	37.5	1.61	1.59%	0.00	0.627	0.000	94.1	0.900	0.580	(22.6%)	0	0	0.0%	4.3%
= Yiacco Medical Co.	YIAC.KW	NM	6.55	0.00%	NA	0.707	0.000	12.1	0.777	0.672	0.1%	0	0	0.0%	NM
= Al-Maidan Clinic For Oral Health Services Co.	MIDAN.KW	51.1	7.58	0.00%	0.00	1.220	0.000	305.0	1.220	1.220	0.0%	0	0	0.0%	14.8%
Health Care		49.2	4.09	0.36%		411.2		(6.3%)	0	0	8.3%				
▲ Kuwait National Cinema Co.	KCIN.KW	28.6	0.91	4.97%	0.27	0.649	0.001	65.6	1.050	0.600	(38.1%)	5,000	3,245	0.8%	3.2%
▼ Kuwait Hotels Co.	KHOT.KW	NM	1.32	0.00%	NA	0.088	(0.002)	5.1	0.101	0.069	(12.5%)	1,680	147	0.1%	NM
= Sultan Center Food Products Co.	SCFK.KW	17.5	0.69	0.00%	0.53	0.055	0.000	31.8	0.060	0.036	5.8%	339	19	6.8%	3.9%
= Kuwait Cable Vision Co.	KWTV.KW	NM	0.52	0.00%	0.21	0.014	0.000	0.5	0.026	0.012	0.0%	0	0	0.0%	NM
▼ IFA Hotels & Resorts Co.*	IFAH.KW	NM	1.75	0.00%	0.23	0.024	(0.000)	15.1	0.062	0.021	(56.9%)	342,210	7,902	3.3%	NM
= Oula Fuel Marketing Co.	OULA.KW	31.5	0.71	4.52%	0.46	0.109	0.000	44.1	0.134	0.095	(14.2%)	80,424	8,768	4.1%	2.2%
▲ Kuwait Resorts Co.	MUNK.KW	15.1	0.34	0.00%	0.69	0.047	0.000	10.0	0.060	0.038	(18.2%)	608,252	28,798	38.7%	2.3%
▼ Jazeera Airways Co.	JAZK.KW	NM	4.34	6.15%	0.70	0.569	(0.002)	113.8	1.110	0.372	(48.2%)	394,489	226,020	22.6%	NM
= Soor Fuel Marketing Co.	SOOR.KW	20.6	0.68	4.50%	0.46	0.110	0.000	44.5	0.129	0.096	(12.0%)	27,468	3,007	4.7%	3.3%
= Future Kid Entertainment and R.E Co.	KIDK.KW	NM	0.53	15.47%	0.02	0.077	0.000	8.9	0.110	0.069	(13.3%)	0	0	0.6%	NM
= Al Rai Media Group Co.	ALRA.KW	NM	0.86	0.00%	0.26	0.037	0.000	8.6	0.049	0.030	(2.4%)	0	0	0.3%	NM
▲ Jiyad Holding Co	JIYAD.KW	10.3	0.32	0.00%	0.62	0.036	0.000	12.7	0.047	0.029	(7.2%)	147,505	5,192	13.9%	3.2%
▼ Al Eid Food Co.	ALEID.KW	4.5	0.35	0.00%	NA	0.065	(0.003)	6.5	0.096	0.046	(17.8%)	267,000	17,300	4.9%	7.8%
Consumer Services		NM	0.92	4.26%		367.1		(33.5%)	1,874,367	300,397	NM				
▲ Zain	ZAIN.KW	12.2	2.02	5.77%	1.39	0.572	0.001	2,475.1	0.604	0.407	(4.7%)	3,190,169	1,828,250	16.8%	16.6%
▲ National Mobile Telecom Co.	OORE.KW	20.2	0.54	8.56%	0.46	0.581	0.001	292.8	0.835	0.550	(29.8%)	128,387	74,478	3.0%	2.7%
▲ AAN digital services Co.	AAN.KW	NM	0.35	0.00%	1.33	0.012	0.000	10.2	0.021	0.009	(13.3%)	42,586,896	497,823	140.3%	NM
= Kuwait Telecommunication Co.	STC.KW	10.8	2.08	5.82%	0.58	0.859	0.000	429.0	0.870	0.680	9.0%	12,891	11,069	2.2%	19.2%
▼ Hayat Communications Co.	HAYK.KW	8.6	0.61	0.00%	1.22	0.070	(0.004)	6.5	0.098	0.030	(6.1%)	13,200	930	6.1%	7.0%
Telecommunications		12.5	1.59	6.00%		3,213.6		(6.0%)	45,931,543	2,412,550	12.8%				
▲ National Bank of Kuwait	NBKK.KW	19.3	1.90	3.85%	1.28	0.853	0.001	5,843.2	1.062	0.654	(16.3%)	3,868,611	3,294,810	15.0%	9.8%
▼ Gulf Bank	GBKK.KW	12.6	1.08	4.93%	1.13	0.212	(0.001)	646.2	0.317	0.180	(30.0%)	8,589,675	1,825,357	35.1%	8.6%
= Commercial Bank of Kuwait	CBKK.KW	NM	1.47	3.98%	0.39	0.500	0.000	996.0	0.555	0.465	(5.5%)	0	0	1.4%	NM
▲ Ahli Bank of Kuwait	ABKK.KW	NM	0.50	3.95%	0.62	0.176	0.002	285.0	0.320	0.156	(31.3%)	611,783	107,059	6.4%	0.3%
▲ Ahli United Bank - Kuwait	BKME.KW	13.9	1.35	4.79%	0.85	0.270	0.006	584.8	0.330	0.225	(17.1%)	1,032,985	278,219	5.6%	9.7%
▲ Kuwait International Bank	KIBK.KW	26.2	0.77	3.40%	1.00	0.177	0.002	200.5	0.271	0.162	(32.2%)	11,300,632	1,995,438	92.5%	3.0%
▼ Burgan Bank	BURG.KW	8.3	0.73	6.05%	1.05	0.198	(0.001)	519.8	0.340	0.175	(34.9%)	663,492	131,418	14.5%	8.8%
= Kuwait Finance House	KFH.KW	23.9	2.57	2.89%	1.42	0.623	0.000	4,781.0	0.761	0.473	(15.5%)	3,515,509	2,191,500	22.2%	10.7%
= Boubyan Bank	BOUK.KW	37.3	3.84	1.36%	1.05	0.583	0.000	1,900.7	0.638	0.380	2.8%	358,022	208,839	5.3%	10.3%
▼ Warba Bank	WARB.KW	NM	1.84	0.00%	0.98	0.213	(0.004)	335.5	0.279	0.164	(18.7%)	27,680,603	5,980,792	32.2%	NM
▼ Ahli United Bank - Bahrain	AUBK.KW	11.1	1.84	8.05%	1.11	0.224	(0.003)	2,181.2	0.311	0.160	(23.0%)	12,577,343	2,839,372	35.2%	16.6%
= Ithmaar Bank	ITHMR.KW	NM	24.95	0.00%	0.77	0.022	0.000	67.6	0.025	0.021	0.0%	0	0	0.0%	NM
Banks		20.4	1.82	3.89%		18,341.4		(16.6%)	70,198,655	18,852,806	9.0%				

Boursa Kuwait Daily Bulletin

Monday, September 7, 2020

Company	Reuters Ticker	Valuation Multiples				Price (KWD)		MKT Cap (KWD Mn.)	52 Weeks High (KWD)	52 Weeks Low (KWD)	YTD-20 Return #	Daily Trading Data		YTD-20 Capital Turnover	ROE
		Trailing P/E (X)	Trailing P/BV (X)	Dividend Yield	Beta	Closing	DTD Change					Volume (Shrs.)	Value (KWD)		
▼ Kuwait Insurance Co.	KINS.KW	6.4	0.82	7.72%	NA	0.370	(0.004)	71.8	0.387	0.300	12.1%	10	4	1.1%	12.8%
▼ Gulf Insurance Group	GIN.S.KW	7.0	0.96	6.44%	0.08	0.565	(0.005)	105.7	0.680	0.550	(14.4%)	310	180	0.1%	13.6%
= Ahleiah Insurance Co.	AINS.KW	7.7	0.78	5.85%	0.12	0.400	0.000	84.0	0.424	0.367	(1.9%)	15,035	6,014	0.8%	10.1%
▲ Warba Insurance Co.	WINS.KW	12.6	0.40	8.91%	0.36	0.077	0.002	13.6	0.094	0.051	27.3%	2,391	180	1.9%	3.1%
= Kuwait Reinsurance Co.	KWRE.KW	8.3	0.75	2.30%	0.02	0.200	0.000	40.8	0.200	0.126	45.0%	0	0	0.1%	9.1%
= First Takaful Insurance Co.	FTIK.KW	NM	0.48	0.00%	0.33	0.040	0.000	4.3	0.056	0.031	5.0%	19,510	724	2.6%	NM
▲ Wethaq Takaful Insurance Co.	WETH.KW	NM	0.22	0.00%	0.38	0.024	0.000	2.6	0.035	0.018	(4.0%)	20,510	469	11.6%	NM
= Bahrain Kuwait Insurance Co.	BKIK.KW	12.0	0.94	7.50%	0.02	0.200	0.000	28.6	0.220	0.190	0.0%	0	0	0.0%	7.8%
Insurance		8.9	0.79	6.14%				351.4			1.2%	57,766	7,571		8.8%
▲ Sokouk Holding Co.	SHCK.KW	NM	0.40	0.00%	1.16	0.027	0.002	16.2	0.040	0.022	(22.4%)	1,857,132	49,306	27.9%	NM
▲ Kuwait Real Estate Co.	KREK.KW	25.3	0.72	0.00%	0.99	0.097	0.003	91.4	0.115	0.070	(8.1%)	2,925,775	276,482	17.9%	2.8%
= United Real Estate Co.	UREK.KW	NM	0.33	0.00%	0.38	0.051	0.000	60.6	0.063	0.045	(16.8%)	0	0	0.6%	NM
▼ National Real Estate Co.	NREK.KW	23.6	0.38	0.00%	1.15	0.071	(0.001)	101.6	0.090	0.058	(18.3%)	497,231	35,554	15.9%	1.6%
▲ Salhia Real Estate Co.	SREK.KW	6.1	1.23	6.02%	0.34	0.400	0.001	205.1	0.460	0.324	(4.1%)	52,980	20,899	5.1%	20.2%
= Tamdeen Real Estate Co.	TAMK.KW	NM	0.77	1.94%	0.10	0.251	0.000	108.4	0.343	0.248	(21.8%)	0	0	0.5%	NM
▼ Ajial Real Estate Entertainment Co.	AREC.KW	19.0	0.21	0.00%	0.51	0.133	(0.005)	25.9	0.213	0.115	(22.8%)	7,150	951	3.7%	1.1%
= Al Massaleh Real Estate Co.	MREC.KW	NM	0.36	0.00%	0.24	0.032	0.000	7.6	0.040	0.026	(13.2%)	0	0	1.5%	NM
▲ Arab Real Estate Co.	ARAB.KW	NM	0.25	0.00%	1.18	0.025	0.000	12.5	0.033	0.020	(16.9%)	141,188	3,433	20.6%	NM
▲ AL-Enma'a Real Estate Co.*	ENMA.KW	20.3	0.46	0.00%	0.64	0.046	0.002	20.7	0.079	0.037	(26.6%)	1,960,825	88,592	23.1%	2.3%
▼ Mabanee Co.	MABK.KW	23.2	1.51	2.08%	1.09	0.633	(0.001)	699.5	0.878	0.434	(25.9%)	546,113	347,063	17.1%	6.5%
▲ Injazzat Real Estate Development Co.	INJA.KW	NM	0.51	8.68%	0.20	0.079	0.000	27.1	0.091	0.061	(1.9%)	30,000	2,355	1.1%	NM
▲ Investors Holding Group Co.	INVK.KW	NM	0.80	0.00%	1.16	0.016	0.000	10.0	0.017	0.007	100.0%	9,773,282	161,320	222.6%	NM
▼ The Commercial Real Estate Co.	TIJK.KW	18.2	0.60	5.11%	0.53	0.096	(0.002)	169.9	0.103	0.083	2.6%	646,975	62,174	6.2%	3.3%
= Sanam Real Estate Co.	SANK.KW	NM	0.40	0.00%	0.38	0.030	0.000	3.7	0.043	0.027	(25.0%)	43,381	1,301	2.4%	NM
▲ A'ayan Real Estate Co.	AYRE.KW	NM	0.33	8.89%	0.57	0.055	0.002	23.0	0.080	0.048	(24.2%)	5,500	305	2.1%	NM
= Aqar Real Estate Investment Co.	AQAR.KW	6.1	0.52	7.18%	NA	0.060	0.000	14.8	0.089	0.060	(21.3%)	0	0	1.7%	8.5%
= Kuwait Real Estate Holding Co.	ALAQ.KW	NM	0.54	0.00%	0.53	0.023	0.000	4.4	0.034	0.023	(20.6%)	0	0	7.9%	NM
▲ MAZAYA Holding Co.	MAZA.KW	NM	0.50	0.00%	0.99	0.053	0.001	36.6	0.067	0.047	(10.1%)	3,054,356	162,735	14.7%	NM
= Tijara Real Estate & Investment Co.	TIJA.KW	14.3	0.38	5.01%	0.30	0.040	0.000	14.8	0.055	0.034	(20.2%)	0	0	0.2%	2.6%
▲ Al TAMEER Real Estate Investment Co.	AMAR.KW	NM	0.34	0.00%	0.94	0.020	0.001	4.8	0.034	0.013	(23.8%)	1,309,430	26,184	72.6%	NM
= Arkan Al-Kuwait Real Estate Co. *	ARKK.KW	8.7	0.60	9.88%	0.22	0.081	0.000	20.3	0.100	0.076	(8.9%)	0	0	8.9%	6.9%
= Al-Argan International Real Estate Co.	ARGK.KW	NM	0.27	5.80%	0.42	0.083	0.000	22.0	0.141	0.060	(20.9%)	0	0	0.4%	NM
▼ Abyaar Real Estate Development Co.	ABYR.KW	NM	0.20	0.00%	1.21	0.007	(0.000)	7.9	0.014	0.005	(9.0%)	8,591,692	60,679	53.9%	NM
▲ Munshaat Real Estate Projects Co.	MUNS.KW	NM	0.48	0.00%	0.66	0.061	0.002	19.6	0.085	0.045	(17.6%)	560,003	34,445	5.8%	NM
▲ First Dubai For Real Estate Development	FIRST.KW	NM	0.52	0.00%	1.44	0.039	0.000	38.8	0.055	0.027	9.0%	705,862	27,682	27.1%	0.6%
▲ Kuwait Business Town Real Estate Co.	KBTK.KW	9.9	0.22	0.00%	1.05	0.025	0.001	15.4	0.046	0.022	(44.3%)	1,819,656	43,953	33.0%	2.2%
= Real Estate Asset Management Co.	REAM.KW	NM	1.48	0.00%	0.08	0.204	0.000	22.4	0.204	0.060	132.1%	0	0	0.1%	NM
▲ MENA Real Estate Co. *	MENK.KW	NM	0.19	0.00%	0.98	0.027	0.000	3.7	0.043	0.021	(34.8%)	5,208,301	142,509	82.3%	NM
= Al Mudon International Real Estate Co.	ALMK.KW	NM	0.12	0.00%	0.87	0.016	0.000	1.6	0.029	0.015	(35.1%)	0	0	23.7%	NM
▲ Real Estate Trade Centers Co.	MARA.KW	15.0	0.15	0.00%	0.33	0.026	0.001	3.6	0.050	0.018	12.1%	100,000	2,600	27.0%	1.0%
▲ Kuwait Remal Real Estate Co.	REMAK.KW	NM	0.27	0.00%	0.85	0.018	0.000	5.4	0.028	0.013	(28.3%)	58,961	978	17.0%	NM
▼ Mashaer Holding Co.	MASHAER.KW	NM	0.48	9.12%	0.53	0.055	(0.002)	9.8	0.086	0.048	(29.4%)	50,311	2,793	31.2%	NM
= Effect Real Estate Co.	EFFECT.KW	NM	0.29	0.00%	0.44	0.021	0.000	1.7	N/A	N/A	0.0%	0	0	0.0%	NM
= Ajwan Gulf Real Estate Co.	AJWN.KW	NM	0.19	0.00%	0.60	0.011	0.000	2.2	0.016	0.009	(28.7%)	0	0	116.7%	NM
= Al Masaken Intl. Real Estate Dev. Co.	MASKN.KW	NM	0.37	0.00%	0.14	0.031	0.000	3.1	0.074	0.027	(28.6%)	0	0	0.6%	0.4%
= Dalqan Real Estate Co.	DALQ.KW	62.7	2.37	0.00%	NA	0.350	0.000	15.8	0.385	0.333	0.0%	0	0	0.0%	3.8%
= Dar Al Thuraya Real Estate Co.	THURY.KW	NM	1.21	0.00%	0.02	0.128	0.000	18.8	0.190	0.040	82.6%	0	0	2.1%	0.2%
= Osos Holding Group Co.	OSOS.KW	NM	0.87	7.02%	0.25	0.095	0.000	10.0	0.118	0.084	(5.1%)	0	0	7.0%	NM
▼ KFH Capital REIT	BAITAKREIT.KW	NA	NA	0.00%	NA	1.030	(0.004)	24.3	1.137	0.983	NA	74,508	76,826	3.4%	NA
Real Estate		NM	0.70	2.56%				1,904.9			(15.7%)	40,020,612	1,631,119		NM

Boursa Kuwait Daily Bulletin

Monday, September 7, 2020

Company	Reuters Ticker	Valuation Multiples				Price (KWD)		MKT Cap (KWD Mn.)	52 Weeks High (KWD)	52 Weeks Low (KWD)	YTD-20 Return #	Daily Trading Data		YTD-20 Capital Turnover	ROE
		Trailing P/E (X)	Trailing P/BV (X)	Dividend Yield	Beta	Closing	DTD Change					Volume (Shrs.)	Value (KWD)		
▲ Kuwait Investment Co.	KINV.KW	NM	0.71	12.12%	0.71	0.123	0.001	67.8	0.172	0.095	(18.0%)	1,094,510	135,218	23.1%	NM
= Commercial Facilities Co.	FACI.KW	NM	0.68	9.41%	0.52	0.181	0.000	97.2	0.235	0.179	(16.6%)	0	0	4.4%	NM
= Int'l Financial Advisors Co.	IFIN.KW	0.3	-0.70	0.00%	1.32	0.031	0.000	5.7	0.060	0.027	(42.3%)	0	0	-45.7%	NM
▲ National Investment Co.	NINV.KW	NM	0.79	5.73%	1.24	0.143	0.006	125.3	0.155	0.080	3.6%	9,643,530	1,383,878	32.0%	NM
▲ Kuwait Projects Co.(Holding)	KPRO.KW	5.2	1.41	6.43%	0.57	0.153	0.002	306.0	0.231	0.147	(29.2%)	861,781	130,799	9.2%	27.3%
▼ Coast Invest. & Development Co.	COAS.KW	NM	0.42	0.00%	1.33	0.034	(0.001)	21.3	0.045	0.026	(15.0%)	718,510	24,409	18.4%	NM
▼ The Securities House Co.	SECH.KW	NM	0.49	0.00%	1.14	0.043	(0.001)	23.9	0.063	0.027	(5.5%)	5,222,631	227,899	54.4%	NM
▲ Arzan Financial Group For Fin. & Invest.	ARZA.KW	NM	0.56	0.00%	1.03	0.061	0.002	49.3	0.064	0.022	159.1%	28,478,920	1,759,093	183.1%	NM
▲ Kuwait Financial Centre	MARKZ.KW	NM	0.47	6.19%	0.77	0.081	0.002	38.8	0.121	0.070	(23.8%)	210,111	16,833	24.7%	NM
= Kuwait & M.E. Financial Inv. Co.	KMEF.KW	4.6	1.47	0.00%	0.62	0.130	0.000	34.3	0.132	0.063	45.3%	729,858	94,688	19.3%	32.2%
= First Investment Co.	OLAK.KW	NM	0.41	0.00%	1.01	0.029	0.000	18.6	0.045	0.022	(17.2%)	389,497	11,006	170.2%	NM
▼ Al-Mal Investment Co.	MALK.KW	NM	0.39	0.00%	1.20	0.009	(0.000)	2.9	0.016	0.008	(7.1%)	1,273,578	11,716	81.8%	NM
▲ Gulf Investment House	GIHK.KW	NM	1.74	0.00%	1.00	0.096	0.001	62.3	0.100	0.038	49.1%	997,847	94,929	18.8%	NM
▲ A'ayan Leasing & Investment Co.	AAYK.KW	NM	0.92	0.00%	1.23	0.073	0.006	59.3	0.070	0.032	56.1%	11,011,813	759,522	119.7%	NM
▲ Bayan Investment Co.	BAYK.KW	NM	0.55	0.00%	0.85	0.048	0.000	18.7	0.053	0.031	25.2%	6,000	286	5.7%	NM
▼ Osoul Investment Co.	OSUL.KW	NM	0.75	13.57%	0.44	0.081	(0.002)	12.6	0.121	0.070	7.3%	210,211	16,939	25.4%	NM
= Kuwait Finance & Investment Co.	KFSK.KW	NM	0.39	0.00%	0.30	0.044	0.000	14.3	0.058	0.038	(10.5%)	0	0	8.3%	NM
▼ Kamco Investment Co.	KAMC.KW	NM	0.48	7.30%	0.38	0.069	(0.001)	23.4	0.111	0.060	(23.9%)	272,892	18,679	11.7%	NM
▼ National International Holding Co.	NIHK.KW	8.5	0.41	6.30%	0.67	0.070	(0.002)	15.9	0.081	0.049	(4.8%)	100	7	3.8%	4.8%
▼ UniCap Investment and Finance	UNICAP.KW	NM	0.55	0.00%	0.65	0.042	(0.000)	10.1	0.057	0.035	(23.6%)	895,015	36,733	8.3%	NM
▲ Al Madar Finance & Investment Co.	MADR.KW	17.7	0.86	5.56%	0.34	0.087	0.000	18.6	0.148	0.062	(6.1%)	228,250	19,826	19.6%	4.9%
= Al-Deera Holding	DEER.KW	NM	1.92	0.00%	0.83	0.016	0.000	3.2	0.022	0.011	(20.0%)	0	0	6.1%	NM
▲ Al Salam Group Holding Co.	SAGH.KW	28.7	0.22	0.00%	1.27	0.025	0.001	6.7	0.038	0.018	(14.7%)	9,130,556	227,881	189.7%	0.8%
▲ Ektitab Holding Co.	EKTT.KW	NM	0.37	0.00%	1.00	0.015	0.001	4.8	0.017	0.010	1.3%	6,287,840	95,853	40.0%	NM
▲ Al Madina For Finance & Investment Co.	MADI.KW	NM	0.43	0.00%	1.21	0.012	0.000	5.0	0.019	0.009	(18.0%)	2,792,176	34,230	144.1%	NM
▲ NOOR Financial Investment Co.	NOOR.KW	7.7	1.19	3.59%	1.24	0.167	0.001	69.0	0.184	0.076	40.3%	284,221	47,124	52.1%	15.4%
= Tamdeen Investment Co.	TAMI.KW	NM	0.63	3.38%	0.33	0.353	0.000	121.8	0.400	0.199	2.3%	60,400	21,321	0.3%	NM
▼ Kuwait Syrian Holding Co.	KSHC.KW	NM	0.24	0.00%	0.73	0.027	(0.000)	4.7	0.043	0.022	(15.2%)	1,000,000	26,700	25.1%	NM
▼ Asiya Capital Investment Co.	ASIYA.KW	NM	0.35	0.00%	0.52	0.031	(0.001)	24.9	0.041	0.029	(24.0%)	291,927	9,086	1.1%	NM
▲ Gulf North Africa Holding Co.	GNAH.KW	NM	0.75	0.00%	1.10	0.056	0.000	8.4	0.062	0.052	(10.2%)	9,750	543	3.9%	NM
= Amwal International Investment Co.	AMWA.KW	NM	0.65	0.00%	0.39	0.034	0.000	6.2	0.055	0.030	14.3%	0	0	0.0%	NM
▼ Alimtiar Investment Group	ALIMK.KW	NM	0.50	8.71%	0.95	0.088	(0.000)	99.9	0.137	0.071	(30.1%)	3,106,281	273,414	35.7%	NM
= Tamkeen Holding Co.	TAMKE.KW	NM	0.05	0.00%	NA	0.005	0.000	0.3	N/A	N/A	0.0%	0	0	0.0%	NM
▼ Manazel Holding Co.	MANK.KW	9.3	0.69	0.00%	1.38	0.032	(0.001)	13.8	0.048	0.021	(18.4%)	1,539,950	49,508	39.3%	7.5%
▲ National Industries Group	NIND.KW	NM	0.72	6.21%	1.42	0.161	0.002	229.9	0.247	0.121	(33.2%)	3,168,927	510,652	36.1%	NM
= Warba Capital Holding Co.	WARBACAP.KW	NM	0.56	0.00%	0.70	0.047	0.000	4.7	0.070	0.045	(26.5%)	0	0	8.6%	NM
= Arabi Holding Group Co.	AGHC.KW	NM	1.23	0.00%	0.15	0.198	0.000	34.2	0.337	0.076	(27.7%)	0	0	3.1%	NM
= Privatization Holding Co.	KPPC.KW	NM	0.33	0.00%	0.79	0.042	0.000	25.6	0.059	0.037	(15.4%)	0	0	5.5%	NM
= Credit Rating & Collection Co.	TAHS.KW	NM	1.13	0.00%	NA	0.035	0.000	5.8	0.037	0.019	76.0%	0	0	0.2%	NM
= Egypt Kuwait Holding Co.	ECHK.KW	12.2	2.55	0.00%	0.16	0.374	0.000	383.1	0.500	0.318	(16.9%)	135	50	0.0%	20.9%
▼ GFH Financial Group	GFH.KW	18.6	0.99	7.84%	0.87	0.051	(0.002)	261.5	0.074	0.042	(25.7%)	1,385,155	71,527	1.5%	5.3%
▼ Inovent	INOV.KW	8.6	0.46	7.11%	0.71	0.067	(0.001)	20.2	0.072	0.044	5.0%	223,865	15,111	5.0%	5.4%
= Al Bareeq Holding	BAREEQ.KW	39.4	1.68	0.00%	0.04	0.102	0.000	77.0	0.110	0.100	2.0%	0	0	1.7%	4.3%
= Amar For Finance and Leasing Co.	AMARF.KW	NM	0.58	0.00%	0.07	0.049	0.000	9.9	0.064	0.037	30.0%	0	0	10.9%	NM
= Al-Manar Financing & Leasing Co.	ALMANAR.KW	NM	0.44	0.00%	NA	0.046	0.000	14.2	0.060	0.037	(11.2%)	0	0	6.7%	NM
Financial Services		NM	0.84	4.23%				2,449.5			(11.5%)	91,526,237	6,125,460		NM

Boursa Kuwait Daily Bulletin

Monday, September 7, 2020

Company	Reuters Ticker	Valuation Multiples				Price (KWD)		MKT Cap (KWD Mn.)	52 Weeks High (KWD)	52 Weeks Low (KWD)	YTD-20 Return #	Daily Trading Data		YTD-20 Capital Turnover	ROE
		Trailing P/E (X)	Trailing P/BV (X)	Dividend Yield	Beta	Closing	DTD Change					Volume (Shrs.)	Value (KWD)		
▼ Automated Systems Co.	ASCK.KW	NM	0.54	6.02%	0.12	0.067	(0.007)	6.6	0.086	0.051	(6.1%)	20,651	1,441	1.5%	NM
Technology		NM	0.54	6.02%				6.6			(6.1%)	20,651	1,441		NM
▼ Shamal Az-Zour Al-Oula Power and Water Co.	AZNOULA.KW	29.0	4.65	0.00%	2.24	0.324	(0.004)	356.4	0.500	0.297	N/A	4,890,088	1,593,982	25.5%	16.1%
Utilities		29.0	4.65	0.00%				356.4			N/A	4,890,088	1,593,982		16.1%
Boursa Kuwait		26.8	1.37	4.02%				31,368.7			(13.69%)	290,485,740	34,889,177		5.1%

Year-to-Date 2020 Top Movers & Most Active Stocks

YTD Top % Gainers	Close (KWD)	Percent Change
Arzan Financial Group For Fin. & Invest.	0.061	159.1%
Real Estate Asset Management Co.	0.204	132.1%
Investors Holding Group Co.	0.016	100.0%
Dar Al Thuraya Real Estate Co.	0.128	82.6%
Credit Rating & Collection Co.	0.035	76.0%
YTD Most Active by Volume	Close (KWD)	Volume (Shrs.)
Ahli United Bank - Bahrain	0.224	3,422,910,960
Kuwait Finance House	0.623	1,704,354,871
Arzan Financial Group For Fin. & Invest.	0.061	1,469,704,579
Gulf Petroleum Investment	0.021	1,468,788,313
Investors Holding Group Co.	0.016	1,386,710,412

YTD Top % Losers	Close (KWD)	Percent Change
IFA Hotels & Resorts Co.	0.024	(56.9%)
Jazeera Airways Co.	0.569	(48.2%)
Kuwait Business Town Real Estate Co.	0.025	(44.3%)
Int'l Financial Advisors Co.	0.031	(42.3%)
ALAFCO Aviation Lease & Finance Co.	0.158	(41.9%)
YTD Most Active by Value	Close (KWD)	Value (KWD)
Kuwait Finance House	0.623	1,113,975,293
National Bank of Kuwait	0.853	869,234,558
Ahli United Bank - Bahrain	0.224	741,595,903
Zain	0.572	388,127,090
Agility (PWC Logistics)	0.622	311,127,107

* Different Fiscal Year Company

Disclaimer & Important Disclosures

Kamco Invest is authorized and fully regulated by the Capital Markets Authority ("CMA, Kuwait") and partially regulated by the Central Bank of Kuwait ("CBK").

This document is provided for informational purposes only. Nothing contained in this document constitutes investment, an offer to invest, legal, tax or other advice or guidance and should be disregarded when considering or making investment decisions. In preparing this document, Kamco Invest did not take into account the investment objectives, financial situation and particular needs of any particular person. Accordingly, before acting on this document, investors should independently evaluate the investments and strategies referred to herein and make their own determination of whether it is appropriate in light of their own financial circumstances and objectives. The entire content of this document is subject to copyright with all rights reserved. This research and the information contained herein may not be reproduced, distributed or transmitted in Kuwait or in any other jurisdiction to any other person or incorporated in any way into another document or other material without our prior written consent.

Analyst Certification

Each of the analysts identified in this report, if any and where applicable, certifies, with respect to the sector, companies or securities that the individual analyses, that (1) the views expressed in this report reflect his or her personal views about all of the subject companies and securities and (2) no part of his or her compensation was, is or will be directly or indirectly dependent on the specific recommendations or views expressed in this report.

Kamco Invest Ratings

Kamco Invest research is based on the analysis of regional and country economics, industries and company fundamentals. Kamco Invest company research reflects a long-term (12-month) target price for a company or stock. The ratings bands are:

* **Outperform:** Target Price represents expected returns >= 10% in the next 12 months

* **Neutral:** Target Price represents expected returns between -10% and +10% in the next 12 months

* **Underperform:** Target Price represents an expected return of <-10% in the next 12 months

In certain circumstances, ratings may differ from those implied by a fair value target using the criteria above. Kamco Invest policy is to maintain up-to-date fair value targets on the companies under its coverage, reflecting any material changes to the analyst's outlook on a company. Share price volatility may cause a stock to move outside the rating range implied by Kamco Invest's fair value target. Analysts may not necessarily change their ratings if this happens, but are expected to disclose the rationale behind their view to Kamco Invest clients.

Any terms and conditions proposed by you which are in addition to or which conflict with this Disclaimer are expressly rejected by Kamco Invest and shall be of no force or effect. The information contained in this document is based on current trade, statistical and other public information we consider reliable. We do not represent or warrant that such information is fair, accurate or complete and it should not be relied upon as such. Kamco Invest has no obligation to update, modify or amend this document or to otherwise notify a recipient thereof in the event that any opinion, forecast or estimate set forth herein, changes or subsequently becomes inaccurate. The information is provided for informational uses only and is not intended for trading purposes. The information on publications does not give rise to any legally binding obligation and/or agreement, including without limitation any obligation to update such information. You shall be responsible for conducting your own investigation and analysis of the information contained or referred to in this document and of evaluating the merits and risks involved in the securities forming the subject matter of this or other such document. Moreover, the provision of certain data/information in the publication may be subject to the terms and conditions of other agreements to which Kamco Invest is a party.

Nothing in this document should be construed as a solicitation or offer, or recommendation, to acquire or dispose of any investment or to engage in any other transaction, or to provide any investment advice or service. This document is directed at Professional Clients and not Retail Clients within the meaning of CMA rules. Any other persons in receipt of this document must not rely upon or otherwise act upon it. Entities and individuals

Kamco Investment Company (DIFC) Limited ("Kamco Invest DIFC"), Office 205, Level 2, Gate Village 1, Dubai International Financial Centre, a wholly owned subsidiary of Kamco Investment Company KSC (Public), is regulated by the Dubai Financial Services Authority (DFSA). Kamco Invest DIFC may only undertake the financial services activities that fall within the scope of its existing DFSA licence. The information in this document may be distributed by Kamco Invest DIFC on behalf of Kamco Investment Company KSC (Public). This document is intended for Professional Clients or Market Counterparties only as defined by the DFSA, and no other person should act upon it.

This document may not be distributed in Saudi Arabia except to such persons as are permitted under the Offers of Securities Regulations issued by the Capital Market Authority. The Capital Market Authority does not make any representation as to the accuracy or completeness of this document, and expressly disclaims any liability whatsoever for any loss arising from, or incurred in reliance upon, any part of this document. The recipients of this document hereby should conduct their own due diligence on the accuracy of the information relating to the contents of this document. If you do not understand the contents of this document you should consult an authorized financial advisor.

Risk Warnings

Any prices, valuations or forecasts are indicative and are not intended to predict actual results, which may differ substantially from those reflected. The value of an investment may go up as well as down. The value of and income from any investment may fluctuate from day to day as a result of changes in relevant economic markets (including, without limitation, foreseeable or unforeseeable changes in interest rates, foreign exchange rates, default rates, prepayment rates, political or financial conditions, etc.).

Past performance is not indicative of future results. Any opinions, estimates, valuations or projections (target prices and ratings in particular) are inherently imprecise and a matter of judgment. They are statements of opinion and not of fact, based on current expectations, estimates and projections, and rely on beliefs and assumptions. Actual outcomes and returns may differ materially from what is expressed or forecasted. There are no guarantees of future performance. Certain transactions, including those involving futures, options, and other derivatives, give rise to substantial risk and are not suitable for all investors. This document does not propose to identify or to suggest all of the risks (direct or indirect) which may be associated with the investments and strategies referred to herein.

Conflict of Interest

Kamco Invest and its affiliates provide full investment banking services, and they and their directors, officers and employees, may take positions which conflict with the views expressed in this document. Salespeople, traders, and other professionals of Kamco Invest may provide oral or written market commentary or trading strategies to our clients and our proprietary trading desks that reflect opinions that are contrary to the opinions expressed in this document. Our asset management area, our proprietary trading desks and investing businesses may make investment decisions that are inconsistent with the recommendations or views expressed in this document. Kamco Invest may have or seek investment banking or other business relationships for which it will receive compensation from the companies that are the subject of this document. Facts and views presented in this document have not been reviewed by, and may not reflect information known to, professionals in other Kamco Invest business areas, including investment banking personnel. United Gulf Bank, Bahrain owns majority of Kamco Invest's shareholding and this ownership may create, or may create the appearance of, conflicts of interest.

No Liability & Warranty

Kamco Invest makes neither implied nor expressed representations or warranties and, to the fullest extent permitted by applicable law, we hereby expressly disclaim any and all express, implied and statutory representations and warranties of any kind, including, without limitation, any warranty as to accuracy, timeliness, completeness, and fitness for a particular purpose and/or non-infringement. Kamco Invest will accept no liability in any event including (without limitation) your reliance on the information contained in this document, any negligence for any damages or loss of any kind, including (without limitation) direct, indirect, incidental, special or consequential damages, expenses or losses arising out of, or in connection with your use or inability to use this document, or in connection with any error, omission, defect, computer virus or system failure, or