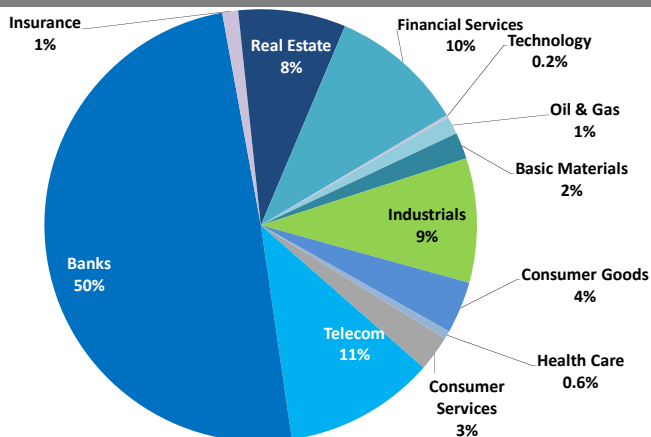


## Kuwait Market Daily Report

January 28, 2015

### Sector Weight by Market Cap



### Top 10 Kuwaiti Companies by Market Capitalization

Company Name	Market Cap. (Mn KWD)	P/E (X)	ROE* (%)
1- National Bank of Kuwait	4,319.8	17.7	9.4%
2- Kuwait Finance House	3,335.5	28.5	6.6%
3- Zain	2,290.4	10.8	13.2%
4- Ahli United Bank - Bahrain	1,404.8	11.0	13.8%
5- Kuwait Food Co. (Americana)	1,077.4	19.2	15.9%
6- Kuwait Projects Co.	1,031.5	22.5	8.9%
7- Ahli United Bank - Kuwait	944.9	20.6	14.3%
8- Agility	911.8	18.4	5.6%
9- Burgan Bank	907.6	17.7	9.3%
10- Gulf Bank	885.4	25.6	6.8%
<b>Total</b>	<b>17,109</b>	<b>17.40</b>	<b>9.8%</b>

\*: ROE is calculated based on TTM 9M-2014 net profit & shareholders' equity as of 30-Sep-14

### Top Movers and Most Active Stocks

Today's Top % Gainers	Close (KWD)	Change (KWD)	Percent Change
Kuwait Cable Vision	0.034	0.003	7.9%
Gulf Insurance Group	0.600	0.040	7.1%
Alimtiq Investment Co.	0.081	0.005	6.6%
Ras AL Khaimah Co. for White Cement	0.130	0.008	6.6%
Gulf Glass Manufacturing Co.	0.510	0.030	6.3%

Today's Top % Losers	Close (KWD)	Change (KWD)	Percent Change
Burgan Co. for Well Drilling	0.178	(0.020)	(10.1%)
Al Madar Finance & Investment Co.	0.030	(0.003)	(7.8%)
Kuwait Finance & Investment Co.	0.055	(0.004)	(6.8%)
Mashaer Holding Co.	0.130	(0.008)	(5.8%)
Zima Holding Co.	0.110	(0.006)	(5.2%)

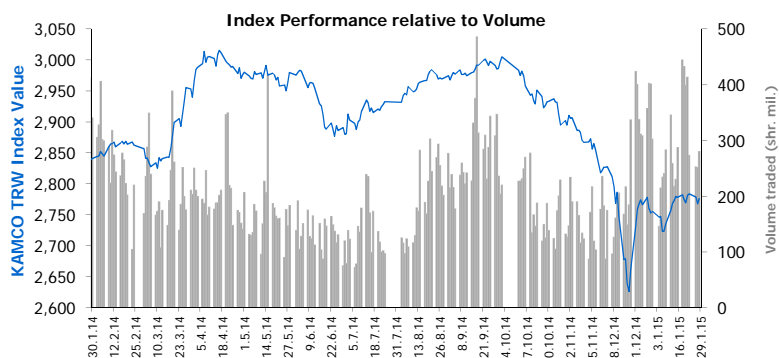
Today's Most Active by Volume	Close (KWD)	Change (KWD)	Volume (Shares)
Gulf Finance House	0.024	0.000	44,296,412
Al Dar National Real Estate Co.	0.026	0.001	25,877,467
Gulf Investment House	0.063	0.002	18,431,277
National Ranges Co. (MAYADEEN)	0.035	0.000	17,162,302
Manazel Holding Co.	0.052	0.003	14,393,714

Source: KAMCO Research

### Market Capitalization - Sectors' Return

	Market Cap. (KWD Mn)	DTD	DTD % Chg	MTD % Chg	YTD % Chg
Kuwaiti Stock Exchange	30,045.7	▲	0.4%	1.1%	1.1%
Oil & Gas	400.8	▲	0.8%	2.4%	2.4%
Basic Materials	593.7	▲	0.3%	(8.5%)	(8.5%)
Industrials	2,798.0	▲	1.3%	2.5%	2.5%
Consumer Goods	1,167.8	▲	0.7%	(4.1%)	(4.1%)
Health Care	179.5	=	0.0%	(2.4%)	(2.4%)
Consumer Services	800.1	▲	0.2%	2.9%	2.9%
Telecommunications	3,383.2	▲	1.1%	1.1%	1.1%
Banks	14,857.8	▲	0.2%	1.8%	1.8%
Insurance	354.8	▲	2.2%	(0.6%)	(0.6%)
Real Estate	2,417.4	▲	0.2%	1.0%	1.0%
Financial Services	3,037.5	▲	0.1%	0.8%	0.8%
Technology	55.2	▲	0.5%	(2.0%)	(2.0%)

Market Breadth	▲ 48	▼ 33	▬ 112		
Benchmark Return	Closing Value	DTD Chg	DTD % Chg	MTD % Chg	YTD % Chg
KAMCO TRWI	2,775.70	7.9	0.3%	0.7%	0.7%
KSE Price Index	6,636.59	21.2	0.3%	1.5%	1.5%
KSE Weighted Index	443.75	1.9	0.4%	1.1%	1.1%
Kuwait 15 Index	1,074.88	6.6	0.6%	1.4%	1.4%
Market Cap (KWD Mn)	30,046	130.9	0.4%	1.1%	1.1%



### Market Trading Data and Volatility

Trading Indicators	Today's Value	DTD Chg	DTD % Chg	Average Daily YTD 2015	Average Daily YTD 2014
Volume (Shrs Mn)	280.4	251.8	11.4%	289.4	431.4
Value Traded (KWD Mn)	28.6	22.6	26.7%	26.6	38.0
No. of Trades	6,009	6,174.0	(2.7%)	6,693	7,564

Market Volatility**	Volatility Since January:				
	2014	2013	2012	2011	2010
KAMCO TRW Index	7.1%	6.2%	5.9%	7.0%	7.7%
KSE Price Index	10.5%	11.2%	10.2%	9.9%	9.8%
KSE Weighted Index	10.4%	9.1%	8.7%	10.0%	10.8%

\*\* Annualized Standard Deviation of Daily Returns

Today's Most Active by Value	Close (KWD)	Change (KWD)	Value (KWD)
National Bank of Kuwait	0.900	(0.010)	3,529,038
Agility	0.790	0.020	2,151,198
Kuwait Food Co. (Americana)	2.680	0.020	1,721,191
ZAIN	0.530	0.010	1,696,266
Salbookh Trading Co.	0.118	0.002	1,392,964

## KUWAIT 15 INDEX Data

Wednesday, January 28, 2015

Kuwait 15 Index Constituents	Closing Price			Market Capitalization			Valuation Multiples				ROE	YTD-15 Price Return	YTD-15 Trading Indicators	
	KWD	DTD Chg. (KWD)	D-T-D Return	KWD Mn	Weight in Kuwait 15	Weight in KSE	P/E (X)	P/BV (X)	Yield	Beta			Turnover (Mn Shrs)	Value (KWD Mn)
▼ National Bank of Kuwait	0.900	(0.010)	(1.10%)	4,320	24.6%	14.4%	17.7	1.67	3.3%	1.48	9.4%	(1.1%)	26.7	24.1
▲ Kuwait Finance House	0.770	0.010	1.32%	3,336	19.0%	11.1%	28.5	1.89	1.5%	1.52	6.6%	6.9%	36.6	27.5
▲ Zain	0.530	0.010	1.92%	2,290	13.0%	7.6%	10.8	1.43	8.5%	1.63	13.2%	0.0%	97.7	50.6
▲ Kuwait Food Co. (Americana)	2.680	0.020	0.75%	1,077	6.1%	3.6%	19.2	3.0	3.1%	0.82	16%	(4.3%)	1.6	4.3
= Kuwait Projects Co. (Holding)	0.700	0.000	0.00%	1,032	5.9%	3.4%	22.5	2.01	2.7%	1.57	8.9%	0.0%	22.6	15.8
= Burgan Bank	0.465	0.000	0.00%	908	5.2%	3.0%	17.7	1.64	1.2%	1.33	9.3%	(3.1%)	8.3	3.9
= Boubyan Bank	0.445	0.000	0.00%	874	5.0%	2.9%	35.9	3.05	0.0%	1.49	8.5%	8.5%	46.4	19.7
▲ Gulf Bank	0.305	0.010	3.39%	885	5.0%	2.9%	25.6	1.74	0.0%	0.90	6.8%	5.2%	12.7	3.8
▲ Agility (PWC Logistics)	0.790	0.020	2.60%	912	5.2%	3.0%	18.4	1.04	4.6%	1.93	5.6%	6.8%	22.3	16.8
▲ Mabanee Co.	0.980	0.010	1.03%	724	4.1%	2.4%	15.9	2.90	2.4%	1.41	18.2%	2.1%	2.9	2.8
= Boubyan Petrochemicals	0.570	0.000	0.00%	290	1.7%	1.0%	10.2	1.09	7.4%	1.38	10.7%	(12.3%)	4.1	2.4
= Kuwait International Bank	0.260	0.000	0.00%	270	1.5%	0.9%	19.5	1.18	2.4%	1.47	6.1%	4.8%	9.5	2.4
= National Industries Group	0.190	0.000	0.00%	258	1.5%	0.9%	27.8	0.55	0.0%	2.00	2.0%	0.0%	16.4	3.1
= Warba Bank	0.236	0.000	0.00%	236	1.3%	0.8%	NM	2.56	0.0%	NA	NM	0.0%	46.4	11.0
▲ The Commercial Real Estate Co.	0.094	0.001	1.08%	160	0.9%	0.5%	10.6	0.63	6.4%	1.29	5.9%	(2.1%)	4.4	0.4
<b>Subtotal- Kuwait 15 Index</b>	<b>1,074.88</b>	<b>6.60</b>	<b>0.62%</b>	<b>17,572</b>	<b>100%</b>	<b>58%</b>	<b>18.6</b>	<b>1.65</b>	<b>3.15%</b>		<b>8.9%</b>	<b>1.4%</b>	<b>359</b>	<b>189</b>
<b>Remaining of the Market</b>				<b>12,474</b>		<b>42%</b>	<b>17.0</b>	<b>1.00</b>	<b>3.31%</b>		<b>5.9%</b>		<b>4,851</b>	<b>290</b>

**Kuwait Stock Exchange Daily Bulletin**

Wednesday, January 28, 2015

Company	Reuters Ticker	Valuation Multiples				Price (KWD)			MKT Cap (KWD Mn.)	52 Weeks High (KWD)	52 Weeks Low (KWD)	YTD-15 Return #	Daily Trading Data		YTD-15 Capital Turnover	ROE
		Trailing P/E (X)	Trailing P/BV (X)	Dividend Yield	Beta	Closing	DTD Change	Volume (Shrs.)					Value (KWD)			
= Contracting & Marine Services Co.	MARI.KW	14.1	0.49	0.00%	0.57	0.100	0.000	22.9	0.188	0.095	(15.3%)	1,110	112	0.1%	3.5%	
▲ IKARUS Petroleum Industries Co.	IKAR.KW	10.3	0.54	6.49%	0.99	0.146	0.002	115.0	0.200	0.116	(1.4%)	8,300	1,212	0.2%	5.2%	
▲ Al-Safat Energy Holding Co.	SENE.KW	NM	0.35	0.00%	1.40	0.024	0.001	14.2	0.052	0.017	0.0%	4,867,600	112,062	37.3%	NM	
▲ Independent Petroleum Group	IPGK.KW	11.2	0.72	7.21%	0.66	0.395	0.010	60.1	0.480	0.375	(3.7%)	1,100	435	0.1%	6.4%	
= National Petroleum Services Co.	NAPS.KW	11.7	2.10	5.57%	0.38	0.610	0.000	35.1	0.620	0.510	7.0%	0	0	0.0%	18.0%	
▲ The Energy House Co.	ENER.KW	NM	1.33	0.00%	0.77	0.110	0.004	82.5	0.110	0.078	26.4%	1,858,249	200,892	1.4%	NM	
▲ Gulf Petroleum Investment	GPIK.KW	7.7	0.73	0.00%	1.14	0.094	0.003	33.7	0.114	0.066	14.6%	1,337,764	124,003	14.5%	9.4%	
▼ Burgan Co. for Drilling, Tdg. & Maint. *	ABAR.KW	NM	0.70	0.00%	0.57	0.178	(0.020)	37.3	0.242	0.178	(14.4%)	2,500	445	0.0%	0.8%	
<b>Oil &amp; Gas</b>		<b>26.9</b>	<b>0.71</b>	<b>3.43%</b>				<b>400.8</b>			<b>2.4%</b>	<b>8,076,623</b>	<b>439,160</b>		<b>2.6%</b>	
▲ Kuwait Foundry Co.	KFDC.KW	20.6	0.84	3.17%	0.51	0.315	0.010	48.5	0.400	0.290	(3.1%)	17,290	5,299	0.6%	4.1%	
= Boubyan Petrochemicals Co.*	BPCC.KW	10.2	1.09	7.41%	1.38	0.570	0.000	290.3	0.800	0.560	(12.3%)	126,513	73,200	0.8%	10.7%	
= Al Kout for Industrial Projects Co.	ALKK.KW	7.9	1.70	7.69%	0.05	0.520	0.000	45.9	0.520	0.520	0.0%	0	0	0.0%	21.4%	
= Qurain Petrochemical Industries Co. *	ALQK.KW	6.1	0.68	5.06%	1.16	0.190	0.000	209.0	0.275	0.182	(5.9%)	157,263	30,213	0.2%	11.1%	
<b>Basic Materials</b>		<b>8.4</b>	<b>0.90</b>	<b>6.26%</b>				<b>593.7</b>			<b>(8.5%)</b>	<b>301,066</b>	<b>108,711</b>		<b>10.8%</b>	
= Specialities Group Holding Co.	SPEC.KW	7.9	0.58	4.83%	NA	0.138	0.000	20.7	0.208	0.120	1.5%	0	0	0.2%	7.2%	
= Kuwait Cement Co.	KCEM.KW	15.2	1.38	4.67%	1.13	0.375	0.000	275.0	0.455	0.340	(6.3%)	28,419	10,657	0.0%	9.1%	
= Refrigeration Industries & Storage Co.	REFR.KW	9.9	1.42	2.83%	0.64	0.350	0.000	31.3	0.365	0.320	4.5%	0	0	0.0%	14.3%	
▲ Gulf Cable & Electrical Ind. Co.	CABL.KW	14.4	0.93	4.48%	0.92	0.670	0.010	140.7	0.830	0.530	(2.9%)	5,050	3,384	0.2%	6.5%	
▼ Heavy Eng'g Ind. & Shipbuilding Co.	SHIP.KW	10.2	0.67	0.00%	0.97	0.138	(0.004)	23.7	0.162	0.136	(6.8%)	107	15	0.2%	6.6%	
= Kuwait Portland Cement Co.	PCEM.KW	12.4	1.79	6.25%	1.15	1.360	0.000	123.6	1.440	1.220	4.6%	13,711	18,647	0.4%	14.4%	
= Shuaiba Industrial Co.	PAPE.KW	12.6	0.94	4.54%	0.45	0.246	0.000	15.9	0.355	0.232	(3.5%)	0	0	0.2%	7.5%	
= Metal & Recycling Co.	MRCK.KW	NM	0.41	0.00%	1.11	0.084	0.000	6.9	0.136	0.076	3.7%	0	0	0.3%	NM	
▲ ACICO Industries Co.	ACIC.KW	10.3	0.88	3.22%	0.94	0.295	0.015	77.1	0.370	0.275	(1.7%)	23,761	7,009	0.3%	8.6%	
▲ Gulf Glass Manufacturing Co.	GGMC.KW	13.8	1.45	5.60%	0.33	0.510	0.030	22.7	0.750	0.430	15.9%	1,010	460	0.1%	10.5%	
= Hilal Cement Co.	HCCK.KW	NM	0.79	4.27%	0.14	0.164	0.000	11.5	0.248	0.100	13.9%	0	0	0.0%	NM	
= Kuwait Packing Materials Co.	KPAK.KW	11.8	1.47	4.04%	0.25	0.450	0.000	20.9	0.630	0.400	11.1%	0	0	0.0%	12.4%	
= Kuwait Building Materials Co.	KBMM.KW	20.1	2.38	3.41%	0.10	0.440	0.000	13.3	0.455	0.150	(1.1%)	0	0	0.0%	11.9%	
= National Industries Co.	NIBM.KW	13.1	0.86	0.00%	0.48	0.216	0.000	76.3	0.240	0.196	3.8%	0	0	0.0%	6.5%	
▲ Equipment Holding Co.	EQUI.KW	30.3	0.76	0.00%	1.27	0.102	0.004	13.9	0.188	0.087	4.1%	1,322,081	132,243	45.2%	2.5%	
= National Co. for Consumer Industries	NCCI.KW	54.5	1.33	0.00%	0.32	0.108	0.000	9.7	0.164	0.062	0.0%	0	0	0.0%	2.4%	
= Kuwait Gypsum Manufacturing & Tdg. Co.	GYPK.KW	33.2	1.12	0.00%	0.03	0.170	0.000	5.1	0.186	0.120	0.0%	0	0	0.0%	3.4%	
▲ Salbookh Trading Co.	SALB.KW	NM	1.29	0.00%	0.66	0.118	0.002	12.4	0.126	0.057	32.6%	11,441,091	1,392,964	38.3%	NM	
▲ Agility (PWC Logistics)	AGLT.KW	18.4	1.04	4.58%	1.93	0.790	0.020	911.8	0.920	0.620	6.8%	2,739,533	2,151,198	1.9%	5.6%	
= Educational Holding Group*	EDUK.KW	11.0	1.08	6.64%	0.57	0.150	0.000	36.8	0.180	0.132	(2.4%)	0	0	0.0%	9.8%	
▲ National Cleaning Co.	CLEA.KW	37.5	0.44	0.00%	1.12	0.068	0.001	17.0	0.142	0.056	6.3%	768,450	52,146	12.0%	1.2%	
= City Group Co.	TTGC.KW	7.2	1.88	10.23%	0.38	0.440	0.000	49.7	0.485	0.380	15.8%	7,000	3,080	0.2%	26.2%	
= Kuwait & Gulf Link Transport Co.	KGLK.KW	NM	0.34	0.00%	1.60	0.063	0.000	16.6	0.108	0.045	8.6%	687,100	43,553	9.4%	NM	
= Kuwait Co. For Process Plant Const. & Cont.	KGPC.KW	8.0	0.83	3.80%	0.40	0.246	0.000	17.9	0.340	0.240	1.7%	0	0	0.1%	10.4%	
▲ Human Soft Holding Co.	HUMN.KW	8.4	1.96	7.27%	0.11	0.450	0.010	55.0	0.550	0.270	16.9%	4,486	2,019	0.1%	23.5%	
▲ Nafais Holding Co.	NAFA.KW	4.0	0.61	0.00%	0.19	0.090	0.001	37.9	0.106	0.073	3.4%	3,500	312	0.1%	15.3%	
= Safwan Trading & Contracting Co.	SAFW.KW	8.8	1.60	7.96%	0.14	0.405	0.000	20.3	0.500	0.405	0.0%	0	0	0.0%	18.2%	
▼ Gulf Franchising Co.	GFCI.KW	19.1	0.59	0.00%	0.88	0.051	(0.002)	1.7	0.092	0.048	(1.9%)	20,658	1,049	1.4%	3.1%	
= National Ranges Co.	MAYA.KW	NM	0.30	0.00%	1.56	0.035	0.000	9.7	0.066	0.014	13.1%	17,162,302	603,536	107.2%	NM	
= Combined Group Contracting Co.	CGCK.KW	20.2	2.54	3.66%	0.72	0.910	0.000	101.6	1.280	0.780	(1.1%)	13,550	12,195	0.2%	12.5%	
= Mishref General Trading & Contracting Co.	MTCC.KW	NM	0.72	0.00%	0.60	0.070	0.000	28.0	0.124	0.054	12.9%	1,645,040	114,478	4.1%	NM	
= United Projects Group	UPAC.KW	10.9	2.48	9.77%	0.37	0.760	0.000	62.7	0.820	0.600	(1.3%)	0	0	0.0%	22.7%	
▲ ALAFCO Aviation Lease & Finance Co.*	ALAF.KW	12.4	1.04	1.91%	1.25	0.238	0.002	204.6	0.275	0.232	(4.0%)	60,019	14,167	0.2%	8.4%	
▲ Mubarrad Transport Co.	MBRD.KW	6.5	0.67	0.00%	1.30	0.077	0.002	12.6	0.093	0.050	28.3%	4,768,046	368,817	27.4%	10.3%	
▼ KGL Logistics Co.	LOGK.KW	11.4	0.76	8.88%	1.26	0.102	(0.002)	61.8	0.196	0.093	(1.9%)	140,855	14,439	0.8%	6.7%	
▲ Sharjah Cement Co.	SCEM.KW	9.0	0.43	6.49%	0.68	0.089	0.001	49.2	0.112	0.086	(2.2%)	18,934	1,680	0.8%	4.7%	

**Kuwait Stock Exchange Daily Bulletin**

Wednesday, January 28, 2015

Company	Reuters Ticker	Valuation Multiples				Price (KWD)		MKT Cap (KWD Mn.)	52 Weeks High (KWD)	52 Weeks Low (KWD)	YTD-15 Return #	Daily Trading Data		YTD-15 Capital Turnover	ROE
		Trailing P/E (X)	Trailing P/BV (X)	Dividend Yield	Beta	Closing	DTD Change					Volume (Shrs.)	Value (KWD)		
▼ Gulf Cement Co.	GCEM.KW	10.0	0.78	4.22%	0.96	0.091	(0.001)	74.7	0.142	0.087	(5.2%)	635,093	58,089	2.5%	7.8%
▼ Umm Al-Qaiwain Cement Industries Co.	QCEM.KW	14.3	0.64	5.50%	0.81	0.098	(0.001)	35.6	0.118	0.088	(3.9%)	150	15	0.7%	4.4%
= Fujairah Cement Industries Co.	FCEM.KW	25.0	0.39	0.00%	0.87	0.080	0.000	28.5	0.096	0.067	5.3%	22,000	1,760	2.4%	1.5%
▲ Ras-Al-Khaimah for White Cement Co.	RKWC.KW	19.2	0.87	2.82%	1.10	0.130	0.008	63.7	0.154	0.112	3.2%	7,460	955	0.0%	4.5%
<b>Industrials</b>		<b>14.3</b>	<b>0.99</b>	<b>4.28%</b>				<b>2,798.0</b>			<b>2.5%</b>	<b>41,539,406</b>	<b>5,008,865</b>		<b>6.9%</b>
= Kuwait Slaughter House Co.	KSHK.KW	12.5	1.62	11.94%	0.06	0.196	0.000	6.1	0.265	0.196	(13.3%)	0	0	0.0%	12.9%
= National Slaughter Houses Co.	NSHK.KW	13.7	1.19	9.21%	0.05	0.152	0.000	4.4	0.172	0.126	1.3%	0	0	0.1%	8.7%
= Palms Agro Production Co.	PAPK.KW	12.5	0.81	7.68%	0.37	0.130	0.000	6.8	0.138	0.100	8.3%	0	0	0.1%	6.5%
= Livestock Transport & Trading Co.	CATT.KW	NM	0.81	0.00%	0.66	0.130	0.000	28.2	0.270	0.120	(11.0%)	0	0	0.3%	NM
= Danah Alsafat Foodstuff Co.	DANK.KW	NM	0.69	0.00%	1.51	0.084	0.000	24.3	0.096	0.063	12.0%	60,022	5,042	8.9%	NM
= Kuwait United Poultry Co.	POUL.KW	9.1	1.12	5.39%	0.58	0.180	0.000	20.8	0.206	0.144	0.0%	0	0	1.4%	12.3%
▲ Kuwait Food Co. (Americana)	FOOD.KW	19.2	3.05	3.09%	0.82	2.680	0.020	1,077.4	3.260	2.400	(4.3%)	642,196	1,721,191	0.4%	15.9%
<b>Consumer Goods</b>		<b>24.1</b>	<b>2.55</b>	<b>3.08%</b>				<b>1,167.8</b>			<b>(4.1%)</b>	<b>702,218</b>	<b>1,726,233</b>		<b>10.6%</b>
= AL-Mowasat Healthcare Co.	MHCK.KW	9.7	0.90	5.43%	0.08	0.184	0.000	17.8	0.200	0.162	0.0%	0	0	0.0%	9.3%
= Advanced Technology Co.	ATCK.KW	39.0	3.46	1.63%	NA	0.920	0.000	138.0	0.930	0.850	(1.1%)	0	0	0.1%	8.9%
= Yiacco Medical Co.	YIAC.KW	12.0	0.66	0.00%	0.92	0.130	0.000	23.6	0.350	0.124	(11.0%)	0	0	0.8%	5.5%
<b>Health Care</b>		<b>24.4</b>	<b>1.88</b>	<b>1.79%</b>				<b>179.5</b>			<b>(2.4%)</b>	<b>0</b>	<b>0</b>		<b>7.7%</b>
= Kuwait National Cinema Co.	KCIN.KW	11.8	1.77	4.63%	0.22	1.040	0.000	105.1	1.500	0.850	6.1%	0	0	8.1%	15.0%
= Kuwait Hotels Co.	KHOT.KW	42.9	1.74	2.74%	0.12	0.178	0.000	10.3	0.178	0.096	0.0%	0	0	0.0%	4.0%
= Sultan Center Food Products Co.	SCFK.KW	14.3	1.32	0.00%	1.88	0.095	0.000	55.0	0.118	0.081	3.3%	73,650	6,929	0.1%	9.3%
▲ Kuwait Cable Vision Co.	KWTV.KW	NM	1.50	0.00%	0.49	0.034	0.003	1.0	0.056	0.029	(5.6%)	21,030	710	0.6%	NM
= EYAS for Higher & Technical Education Co.*	EYAS.KW	8.5	1.29	6.90%	0.10	0.290	0.000	33.5	0.355	0.280	0.0%	0	0	0.0%	15.1%
= IFA Hotels & Resorts Co.*	IFAH.KW	NM	1.92	0.00%	0.55	0.214	0.000	136.0	0.280	0.170	7.0%	0	0	0.0%	NM
= Oula Fuel Marketing Co.	OULA.KW	16.5	0.97	0.00%	0.45	0.140	0.000	53.4	0.224	0.132	(5.4%)	21,633	3,046	0.4%	5.8%
▼ Kuwait Resorts Co.	MUNK.KW	5.9	0.84	5.17%	0.63	0.091	(0.001)	17.0	0.112	0.072	2.2%	280,087	25,388	5.5%	14.2%
= Jazeera Airways Co.	JAZK.KW	12.7	2.39	3.19%	0.81	0.470	0.000	197.4	0.500	0.400	6.8%	264,562	124,345	2.8%	18.8%
= Soor Fuel Marketing Co.	SOOR.KW	13.0	1.01	0.00%	0.59	0.140	0.000	54.0	0.194	0.138	0.0%	63,609	8,940	0.5%	7.8%
= Future Kid Entertainment and R.E Co.	KIDK.KW	17.0	0.65	5.80%	0.09	0.114	0.000	13.3	0.128	0.090	0.0%	0	0	0.0%	3.8%
= Al-Nawadi Holding Co.	ALNA.KW	8.3	0.82	0.00%	0.01	0.118	0.000	19.5	0.150	0.106	(1.7%)	0	0	0.0%	9.8%
= Al Rai Media Group Co.	ALRA.KW	5.2	0.71	4.44%	0.96	0.112	0.000	26.1	0.164	0.098	1.8%	111,190	12,417	2.2%	13.8%
▼ Zima Holding Co.	ZIMAH.KW	NM	1.07	0.00%	NA	0.110	(0.006)	11.0	0.194	0.089	1.9%	9,010	969	0.0%	NM
= United Foodstuff Industries Group Co.	UFIG.KW	NM	1.37	0.00%	0.04	0.182	0.000	6.1	0.300	0.172	(24.8%)	0	0	0.0%	NM
▲ Kout Food Group	KOUT.KW	10.5	1.66	3.57%	0.17	0.840	0.030	61.5	0.930	0.700	0.0%	45,000	37,800	1.0%	15.8%
<b>Consumer Services</b>		<b>19.9</b>	<b>1.46</b>	<b>2.34%</b>				<b>800.1</b>			<b>2.9%</b>	<b>889,771</b>	<b>220,545</b>		<b>7.3%</b>
▲ Zain	ZAIN.KW	10.8	1.43	8.50%	1.63	0.530	0.010	2,290.4	0.700	0.455	0.0%	3,207,216	1,696,266	2.3%	13.2%
▼ National Mobile Telecom Co.	OORE.KW	11.2	0.93	8.75%	1.18	1.420	(0.020)	715.7	1.940	1.280	1.4%	1,517	2,154	0.1%	8.3%
▼ Hits Telecom Holding Co.	HITS.KW	NM	0.46	0.00%	0.99	0.032	(0.001)	27.5	0.074	0.026	3.3%	7,925,759	252,911	21.2%	NM
▲ Kuwait Telecommunication Co.	VIVA.KW	9.0	8.99	0.00%	NA	0.700	0.010	349.6	0.750	0.475	7.7%	1,708,550	1,179,021	15.0%	99.8%
<b>Telecommunications</b>		<b>11.0</b>	<b>1.37</b>	<b>7.61%</b>				<b>3,383.2</b>			<b>1.1%</b>	<b>12,843,042</b>	<b>3,130,352</b>		<b>12.5%</b>
▼ National Bank of Kuwait	NBKK.KW	17.7	1.67	3.27%	1.48	0.900	(0.010)	4,319.8	1.020	0.800	(1.1%)	3,924,559	3,529,038	0.6%	9.4%
▲ Gulf Bank	GBKK.KW	25.6	1.74	0.00%	0.90	0.305	0.010	885.4	0.400	0.270	5.2%	1,409,838	423,936	0.4%	6.8%
= Commercial Bank of Kuwait	CBKK.KW	21.3	1.51	1.02%	0.82	0.620	0.000	875.4	0.840	0.600	(1.6%)	0	0	0.0%	7.1%
= Ahli Bank of Kuwait	ABKK.KW	17.5	1.19	3.21%	0.73	0.405	0.000	655.8	0.465	0.390	(1.2%)	16,000	6,380	0.0%	6.8%
▲ Ahli United Bank - Kuwait	BKME.KW	20.6	2.95	2.48%	1.03	0.660	0.010	944.9	0.790	0.590	3.1%	42,330	27,538	0.2%	14.3%
= Kuwait International Bank	KIBK.KW	19.5	1.18	2.42%	1.47	0.260	0.000	269.7	0.330	0.240	4.8%	0	0	0.9%	6.1%
= Burgan Bank	BURK.KW	17.7	1.64	1.19%	1.33	0.465	0.000	907.6	0.600	0.460	(3.1%)	1,736,124	798,899	0.4%	9.3%
▲ Kuwait Finance House	KFIN.KW	28.5	1.89	1.47%	1.52	0.770	0.010	3,335.5	0.960	0.650	6.9%	1,171,633	894,782	0.8%	6.6%
= Boubyan Bank	BOUK.KW	35.9	3.05	0.00%	1.49	0.445	0.000	874.4	0.580	0.375	8.5%	766,096	340,896	2.4%	8.5%
= Warba Bank	WARB.KW	NM	2.56	0.00%	NA	0.236	0.000	236.0	0.315	0.194	0.0%	1,103,386	262,346	4.6%	NM
▼ Ahli United Bank - Bahrain	AUBK.KW	11.0	1.51	5.17%	0.61	0.234	(0.002)	1,404.8	0.246	0.212	(0.8%)	2,390,100	564,901	0.4%	13.8%
▼ Ithmaar Bank	ITHMR.KW	NM	0.97	0.00%	1.29	0.049	(0.001)	148.5	0.070	0.035	5.4%	295,000	14,455	5.0%	NM
<b>Banks</b>		<b>20.7</b>	<b>1.74</b>	<b>2.25%</b>				<b>14,857.8</b>			<b>1.8%</b>	<b>12,855,066</b>	<b>6,863,171</b>		<b>8.4%</b>

**Kuwait Stock Exchange Daily Bulletin**

Wednesday, January 28, 2015

Company	Reuters Ticker	Valuation Multiples				Price (KWD)		MKT Cap (KWD Mn.)	52 Weeks High (KWD)	52 Weeks Low (KWD)	YTD-15 Return #	Daily Trading Data		YTD-15 Capital Turnover	ROE
		Trailing P/E (X)	Trailing P/BV (X)	Dividend Yield	Beta	Closing	DTD Change					Volume (Shrs.)	Value (KWD)		
= Kuwait Insurance Co.	KINS.KW	10.8	0.91	6.65%	0.24	0.290	0.000	56.3	0.330	0.270	0.0%	0	0	0.2%	8.4%
▲ Gulf Insurance Group	GINS.KW	9.8	1.39	4.91%	0.24	0.600	0.040	112.2	0.650	0.520	0.0%	100	60	0.0%	14.3%
= Ahleiah Insurance Co.	AINS.KW	10.2	0.98	6.60%	0.21	0.485	0.000	97.0	0.500	0.450	(2.0%)	0	0	0.0%	9.6%
= Warba Insurance Co.	WINS.KW	9.2	0.41	5.87%	0.34	0.112	0.000	19.4	0.160	0.100	(3.4%)	0	0	0.1%	4.5%
= Kuwait Reinsurance Co.	KWRE.KW	51.3	0.75	5.00%	0.02	0.200	0.000	30.0	0.200	0.140	0.0%	0	0	0.0%	1.5%
= First Takaful Insurance Co.	FTIK.KW	NM	9.15	0.00%	0.19	0.093	0.000	9.3	0.146	0.093	0.0%	0	0	0.0%	NM
▲ Wethaq Takaful Insurance Co.	WETH.KW	11.9	0.57	0.00%	0.12	0.061	0.001	6.7	0.080	0.053	10.9%	18,050	1,069	0.7%	4.8%
= Bahrain Kuwait Insurance Co.	BKIK.KW	6.9	0.88	6.70%	0.01	0.335	0.000	24.0	0.000	0.000	0.0%	0	0	0.0%	12.7%
<b>Insurance</b>		<b>14.6</b>	<b>0.96</b>	<b>5.61%</b>				<b>354.8</b>			<b>(0.6%)</b>	<b>18,150</b>	<b>1,129</b>		<b>6.6%</b>
▲ Sokouk Holding Co.	SHCK.KW	9.2	0.51	0.00%	1.76	0.069	0.002	39.0	0.132	0.050	11.3%	2,056,438	140,144	10.5%	5.6%
▼ Kuwait Real Estate Co.	KREK.KW	13.1	0.54	7.03%	1.38	0.071	(0.002)	64.4	0.108	0.058	0.0%	3,607,700	257,843	4.4%	4.2%
▼ United Real Estate Co.	UREK.KW	26.6	0.60	8.16%	1.48	0.098	(0.001)	116.4	0.126	0.091	(2.0%)	45,000	4,415	0.1%	2.3%
= National Real Estate Co.	NREK.KW	6.6	0.62	0.00%	1.96	0.132	0.000	118.5	0.170	0.122	0.0%	3,587,222	477,898	1.2%	9.4%
= Salhia Real Estate Co.	SREK.KW	10.7	1.38	5.22%	0.43	0.370	0.000	189.7	0.400	0.335	(1.3%)	0	0	0.0%	12.9%
= Tamdeen Real Estate Co.	TAMK.KW	25.9	1.39	1.68%	0.86	0.450	0.000	176.3	0.465	0.208	(1.1%)	39,000	17,310	0.1%	5.4%
= Ajial Real Estate Entertainment Co.	AREC.KW	46.7	0.31	4.39%	0.47	0.204	0.000	36.0	0.238	0.192	(6.4%)	5,600	1,132	0.1%	0.7%
= Al Massaleh Real Estate Co.	MREC.KW	NM	0.52	0.00%	0.69	0.076	0.000	17.9	0.093	0.064	8.6%	0	0	2.7%	NM
▼ Arab Real Estate Co.	ARAB.KW	NM	0.35	0.00%	1.55	0.047	(0.001)	23.7	0.067	0.034	0.0%	2,181,414	102,604	10.1%	NM
= Union Real Estate Co.	UREC.KW	5.6	0.78	4.37%	0.34	0.148	0.000	29.8	0.178	0.110	0.0%	50	7	0.0%	14.1%
= AL-Enma'a Real Estate Co.*	ENMA.KW	8.4	0.55	0.00%	0.87	0.074	0.000	33.3	0.097	0.066	(3.9%)	76,235	5,558	3.4%	6.6%
▲ Mabanee Co.	MABK.KW	15.9	2.90	2.42%	1.41	0.980	0.010	724.0	1.200	0.840	2.1%	82,893	80,647	0.4%	18.2%
▲ Injazzat Real Estate Development Co.	INJA.KW	NM	0.45	0.00%	1.25	0.071	0.002	24.5	0.094	0.059	7.6%	61,398	4,260	0.5%	NM
▲ Investors Holding Group Co.	INVK.KW	NM	1.38	0.00%	1.69	0.034	0.001	36.4	0.041	0.015	(6.8%)	7,506,566	256,998	27.5%	NM
▲ International Resorts Co.	IRCK.KW	NM	0.51	0.00%	1.60	0.040	0.001	6.1	0.080	0.031	(6.0%)	133,900	5,144	7.3%	NM
▲ The Commercial Real Estate Co.	TIJK.KW	10.6	0.63	6.38%	1.29	0.094	0.001	160.0	0.106	0.082	(2.1%)	421,050	39,219	0.3%	5.9%
= Sanam Real Estate Co.	SANK.KW	NM	0.67	0.00%	0.44	0.064	0.000	7.8	0.078	0.050	4.9%	0	0	1.1%	0.1%
= A'ayan Real Estate Co.	AYRE.KW	19.2	0.52	0.00%	1.19	0.098	0.000	38.8	0.108	0.079	10.1%	1,839,923	182,081	2.2%	2.7%
= Aqar Real Estate Investment Co.	AQAR.KW	7.0	0.84	5.14%	0.50	0.095	0.000	22.3	0.095	0.075	0.0%	0	0	0.0%	12.1%
▼ Kuwait Real Estate Holding Co.	ALAQ.KW	NM	0.75	0.00%	1.00	0.035	(0.001)	6.7	0.068	0.034	(12.5%)	10,000	350	0.1%	NM
= MAZAYA Holding Co.	MAZA.KW	8.1	0.90	4.25%	1.29	0.128	0.000	88.1	0.144	0.096	3.2%	4,345,698	547,596	8.0%	11.1%
▲ Al Dar National Real Estate Co.	ADNC.KW	NM	0.93	0.00%	1.15	0.026	0.001	10.9	0.056	0.017	8.3%	25,877,467	671,475	74.0%	NM
= AL-Themar International Holding Co.*	THMR.KW	10.5	0.71	0.00%	0.52	0.090	0.000	91.1	0.110	0.090	0.0%	0	0	0.0%	6.8%
▲ Tijara Real Estate & Investment Co.	TIJA.KW	10.2	0.64	0.00%	0.57	0.058	0.001	22.3	0.086	0.055	0.0%	364,770	20,681	3.8%	6.3%
▼ Al TAMEER Real Estate Investment Co.	AMAR.KW	NM	0.39	0.00%	0.42	0.035	(0.001)	8.3	0.061	0.029	0.0%	453,251	15,675	4.6%	NM
▼ Arkan Al-Kuwait Real Estate Co.*	ARKK.KW	7.1	1.04	0.00%	0.32	0.132	(0.004)	31.6	0.140	0.102	15.8%	40,065	5,597	0.1%	14.7%
= Al-Argan International Real Estate Co.	ARGK.KW	12.9	0.68	3.68%	0.39	0.184	0.000	48.8	0.220	0.158	1.1%	0	0	0.6%	5.2%
= Abyaar Real Estate Development Co.	ABYR.KW	NM	0.39	0.00%	1.57	0.033	0.000	36.0	0.061	0.028	0.0%	6,083,479	198,770	10.3%	NM
= Munshaat Real Estate Projects Co.	MUNS.KW	1.8	0.49	4.31%	1.64	0.116	0.000	37.4	0.190	0.102	0.0%	420,000	48,520	7.5%	26.5%
▲ First Dubai For Real Estate Development	FIRST.KW	11.1	1.28	0.00%	1.32	0.075	0.001	75.0	0.126	0.050	13.6%	755,850	56,366	4.3%	11.6%
▼ Kuwait Business Town Real Estate Co.	KBTK.KW	2.7	0.36	0.00%	0.93	0.037	(0.002)	18.8	0.057	0.025	5.8%	3,621,620	134,449	10.3%	13.4%
= Real Estate Asset Management Co.	REAM.KW	15.1	0.67	4.88%	NA	0.102	0.000	10.7	0.128	0.099	(7.3%)	0	0	0.0%	4.5%
= MENA Real Estate Co.*	MENK.KW	NM	0.53	0.00%	1.08	0.039	0.000	7.7	0.065	0.034	2.6%	0	0	0.2%	NM
= Al Mudon International Real Estate Co.	ALMK.KW	NM	0.76	0.00%	0.63	0.112	0.000	11.2	0.148	0.059	64.7%	519,328	57,882	63.7%	NM
= Real Estate Trade Centers Co.	MARA.KW	NM	0.18	0.00%	NA	0.032	0.000	3.7	0.060	0.030	(11.1%)	58,089	1,872	1.3%	NM
▼ Kuwait Remal Real Estate Co.	REMA.KW	NM	0.44	0.00%	NA	0.069	(0.002)	21.1	0.114	0.047	15.0%	2,412,930	168,861	21.7%	NM
▼ Mashaer Holding Co.	MASK.KW	11.2	0.52	11.54%	1.02	0.130	(0.008)	23.3	0.238	0.130	(20.7%)	10	1	0.2%	4.6%
<b>Real Estate</b>		<b>14.7</b>	<b>0.89</b>	<b>2.85%</b>				<b>2,417.4</b>			<b>1.0%</b>	<b>66,606,946</b>	<b>3,503,355</b>		<b>6.0%</b>
▼ Kuwait Investment Co.	KINV.KW	10.5	0.58	0.00%	1.07	0.144	(0.002)	79.4	0.180	0.130	1.4%	35,000	5,070	0.2%	5.5%
= Commercial Facilities Co.	FACI.KW	12.2	0.86	7.32%	0.88	0.270	0.000	144.9	0.300	0.260	(1.8%)	0	0	0.5%	7.1%
▼ Int'l Financial Advisors Co.	IFIN.KW	NM	0.38	0.00%	1.47	0.041	(0.001)	29.2	0.090	0.033	(1.2%)	730,261	29,497	6.5%	NM
= National Investment Co.	NINV.KW	16.9	0.67	3.33%	1.49	0.148	0.000	129.7	0.188	0.138	(2.6%)	275,501	40,284	1.0%	4.0%

**Kuwait Stock Exchange Daily Bulletin**

Wednesday, January 28, 2015

Company	Reuters Ticker	Valuation Multiples				Price (KWD)		MKT Cap (KWD Mn.)	52 Weeks High (KWD)	52 Weeks Low (KWD)	YTD-15 Return #	Daily Trading Data		YTD-15 Capital Turnover	ROE
		Trailing P/E (X)	Trailing P/BV (X)	Dividend Yield	Beta	Closing	DTD Change					Volume (Shrs.)	Value (KWD)		
= Kuwait Projects Co.(Holding)	KPRO.KW	22.5	2.01	2.67%	1.57	0.700	0.000	1,031.5	0.800	0.630	0.0%	1,271,979	890,385	1.5%	8.9%
▼ Coast Invest. & Development Co.	COAS.KW	2.1	0.53	0.00%	1.46	0.061	(0.001)	38.1	0.087	0.040	5.2%	1,701,700	104,812	9.8%	25.0%
▼ The Securities House Co.	SECH.KW	NM	1.02	0.00%	0.78	0.084	(0.002)	57.1	0.108	0.065	6.3%	4,851,471	408,961	2.8%	NM
= Securities Group *	SGCK.KW	13.9	0.52	8.46%	0.79	0.118	0.000	30.1	0.140	0.100	0.0%	110	12	0.1%	3.7%
▲ Arzan Financial Group For Fin. & Invest.	ARZA.KW	10.0	0.34	0.00%	0.56	0.049	0.001	39.3	0.082	0.043	2.1%	717,150	35,051	0.7%	3.4%
= Kuwait Financial Centre	MARKZ.KW	8.7	0.59	8.23%	1.64	0.110	0.000	58.4	0.164	0.104	(8.3%)	135,803	14,827	0.4%	6.8%
▼ Kuwait & M.E. Financial Inv. Co.	KMEF.KW	NM	0.43	0.00%	0.42	0.039	(0.002)	10.3	0.070	0.039	(18.8%)	1,202	48	0.1%	NM
▼ Al-Aman Investment Co.	AMAN.KW	3.0	0.71	0.00%	0.72	0.081	(0.004)	15.9	0.104	0.063	5.2%	2,118,075	176,480	11.6%	23.8%
= First Investment Co.	OLAK.KW	NM	8.01	0.00%	1.15	0.104	0.000	67.7	0.124	0.081	0.0%	0	0	0.0%	1.5%
= Al-Mal Investment Co.	MALK.KW	NM	1.08	0.00%	1.71	0.043	0.000	28.6	0.057	0.025	28.8%	0	0	7.7%	NM
▲ Gulf Investment House	GIHK.KW	NM	0.66	0.00%	1.09	0.063	0.002	10.3	0.091	0.022	16.7%	18,431,277	1,158,531	78.8%	NM
▲ A'ayan Leasing & Investment Co.	AAYA.KW	2.5	0.86	0.00%	1.37	0.072	0.003	59.1	0.087	0.058	12.5%	11,103,480	787,722	7.4%	34.3%
= Bayan Investment Co.	BAYK.KW	9.0	0.67	0.00%	1.93	0.066	0.000	25.9	0.112	0.048	13.8%	7,026,429	470,573	13.9%	7.4%
= Osoul Investment Co.	OSUL.KW	16.7	0.68	0.00%	1.07	0.075	0.000	14.2	0.087	0.070	0.0%	0	0	0.5%	4.0%
▼ Kuwait Finance & Investment Co.	KFSK.KW	8.0	0.45	0.00%	0.44	0.055	(0.004)	16.9	0.099	0.053	(8.3%)	155,500	8,926	0.6%	5.6%
▼ KAMCO Investment Co.	KAMC.KW	7.7	0.63	4.77%	0.53	0.095	(0.002)	25.0	0.138	0.090	(1.0%)	300	28	0.2%	8.2%
= National International Holding Co.	NIHK.KW	7.3	0.40	0.00%	0.27	0.065	0.000	13.8	0.087	0.049	18.2%	1,224,758	78,359	5.4%	5.5%
= Housing Finance Co.	ISDN.KW	NM	0.44	0.00%	0.40	0.018	0.000	5.2	0.059	0.015	0.0%	0	0	0.0%	NM
▼ Al Madar Finance & Investment Co.	MADR.KW	1.6	0.37	0.00%	0.57	0.030	(0.003)	6.3	0.059	0.029	(10.6%)	3,995	118	1.5%	23.5%
= Al-Deera Holding	DEER.KW	NM	0.43	0.00%	0.90	0.013	0.000	9.7	0.071	0.010	0.0%	1,187,063	14,837	17.0%	NM
▲ Al Salam Group Holding Co.	SAGH.KW	6.2	0.49	0.00%	1.03	0.067	0.001	17.2	0.124	0.047	15.5%	4,323,287	287,613	36.1%	7.8%
= Ektitab Holding Co.	EKTT.KW	NM	0.52	0.00%	1.60	0.045	0.000	14.2	0.086	0.036	7.2%	1,070,201	48,194	16.2%	NM
▲ Al Qurain Holding Co.	QURK.KW	2.5	0.39	0.00%	1.56	0.012	0.001	3.6	0.050	0.011	(22.6%)	688,520	7,917	18.6%	15.8%
▲ Al Madina For Finance & Investment Co.	MADI.KW	NM	0.46	0.00%	1.42	0.031	0.001	12.6	0.058	0.023	6.9%	6,933,115	213,183	37.9%	NM
= NOOR Financial Investment Co.	NOOR.KW	6.1	0.68	0.00%	1.81	0.088	0.000	36.4	0.160	0.083	(9.3%)	2,400	214	0.7%	11.0%
= Tamdeen Investment Co.	TAMI.KW	15.7	0.86	2.26%	0.84	0.380	0.000	118.5	0.400	0.178	(3.8%)	3,000	1,140	0.5%	5.5%
= Kuwait Bahrain Int'l Exchange Co.	EXCH.KW	9.1	1.11	6.25%	0.37	0.160	0.000	7.4	0.200	0.148	0.0%	0	0	0.0%	12.2%
= Taiba Kuwaiti Holding Co.	DAMK.KW	8.3	0.60	6.25%	0.39	0.088	0.000	15.8	0.090	0.065	0.0%	0	0	0.0%	7.2%
= Kuwait Syrian Holding Co.	KSHC.KW	NM	0.24	0.00%	1.69	0.015	0.000	4.4	0.044	0.013	0.0%	0	0	0.0%	NM
= Strategia Investment Co.	STRAT.KW	4.6	0.53	0.00%	0.92	0.059	0.000	17.7	0.090	0.059	0.0%	0	0	0.0%	11.4%
= Kuwait China Investment Co.	KCIC.KW	28.9	0.45	0.00%	1.60	0.050	0.000	39.6	0.071	0.046	(2.9%)	38,138	1,862	0.4%	1.6%
= Manafae Investment Co.	MANF.KW	24.1	0.70	0.00%	0.57	0.061	0.000	12.3	0.098	0.055	5.2%	2	0	0.5%	2.9%
▲ Gulf North Africa Holding Co.	GNAH.KW	27.1	0.41	0.00%	1.76	0.040	0.001	6.0	0.064	0.031	14.3%	1,256,554	49,669	33.9%	1.5%
= Amwal International Investment Co.	AMWA.KW	21.8	0.39	0.00%	NA	0.035	0.000	6.3	0.061	0.028	6.1%	51,100	1,764	6.2%	1.8%
▲ Alimtiiaz Investment Group	ALIMK.KW	NM	0.53	0.00%	NA	0.081	0.005	91.8	0.087	0.052	19.1%	8,243,985	655,383	8.7%	NM
▲ Manazel Holding Co.	MANK.KW	5.1	1.02	0.00%	2.24	0.052	0.003	37.2	0.072	0.040	14.3%	14,393,714	737,099	17.3%	20.1%
= National Industries Group	NIND.KW	27.8	0.55	0.00%	2.00	0.190	0.000	258.4	0.275	0.164	0.0%	722,880	137,461	1.2%	2.0%
= Boubyan Int'l Industries Holding Co. *	BIHC.KW	NM	0.57	0.00%	1.72	0.068	0.000	20.4	0.110	0.059	(1.4%)	31,585	2,127	2.1%	NM
= Arabi Holding Group Co.	AGHC.KW	10.4	0.98	0.00%	0.90	0.156	0.000	23.4	0.198	0.134	0.0%	34,861	5,498	0.6%	9.4%
▼ Privatization Holding Co.	KPPC.KW	22.4	0.35	0.00%	1.52	0.054	(0.001)	39.9	0.074	0.041	9.1%	2,678,505	144,796	7.0%	1.6%
= Credit Rating & Collection Co.	TAHS.KW	NM	0.82	0.00%	0.19	0.053	0.000	8.7	0.112	0.048	(1.9%)	75,244	3,922	0.6%	NM
= Jeeran Holding Co.*	JEER.KW	NM	0.46	0.00%	0.48	0.061	0.000	9.2	0.077	0.046	(12.9%)	5,400	324	0.1%	NM
= Egypt Kuwait Holding Co.	EKHK.KW	11.7	0.78	0.00%	0.80	0.200	0.000	195.1	0.320	0.180	(2.0%)	0	0	0.1%	6.6%
= Gulf Finance House	GFHK.KW	16.7	0.40	0.00%	1.60	0.024	0.000	75.9	0.068	0.020	(4.0%)	44,296,412	1,062,558	27.9%	2.4%
= Inovent	INOV.KW	NM	0.39	0.00%	1.10	0.066	0.000	18.9	0.084	0.056	(2.9%)	351,580	22,895	0.9%	NM
<b>Financial Services</b>		<b>33.1</b>	<b>0.81</b>	<b>1.81%</b>				<b>3,037.5</b>			<b>0.8%</b>	<b>136,171,537</b>	<b>7,608,139</b>		<b>2.4%</b>

**Kuwait Stock Exchange Daily Bulletin**

Wednesday, January 28, 2015

Company	Reuters Ticker	Valuation Multiples				Price (KWD)			MKT Cap (KWD Mn.)	52 Weeks High (KWD)	52 Weeks Low (KWD)	YTD-15 Return #	Daily Trading Data		YTD-15 Capital Turnover	ROE
		Trailing P/E (X)	Trailing P/BV (X)	Dividend Yield	Beta	Closing	DTD Change	Volume (Shrs.)					Value (KWD)			
= Automated Systems Co.	ASCK.KW	10.2	1.50	12.50%	0.40	0.400	0.000	16.0	0.500	0.375	(1.2%)	0	0	0.0%	14.7%	
= Al Safat TEC Holding Co.	SAFH.KW	NM	0.80	0.00%	1.29	0.058	0.000	23.2	0.074	0.047	(1.7%)	110	6	0.1%	NM	
▲ Future Communications Global Co.	FUTK.KW	11.3	0.70	12.71%	0.38	0.118	0.006	9.6	0.180	0.108	(7.8%)	131,500	15,517	1.0%	6.2%	
▼ Hayat Communications Co.	HAYK.KW	NM	0.69	0.00%	0.56	0.069	(0.002)	6.4	0.110	0.059	4.5%	267,684	18,605	17.5%	NM	
<b>Technology</b>		<b>NM</b>	<b>0.88</b>	<b>5.83%</b>				<b>55.2</b>			<b>(2.0%)</b>	<b>399,294</b>	<b>34,128</b>		<b>NM</b>	
<b>Kuwait Stock Exchange</b>		<b>17.9</b>	<b>1.30</b>	<b>3.22%</b>				<b>30,045.7</b>			<b>1.1%</b>	<b>280,403,119</b>	<b>28,643,788</b>		<b>7.3%</b>	

**Year-to-Date 2015 Top Movers & Most Active Stocks**

YTD Top % Gainers	Close (KWD)	Percent Change
Al Mudon International Real Estate Co.	0.112	64.7%
Salbookh Trading Co.	0.118	32.6%
Al-Mal Investment Co.	0.043	28.8%
Mubarrad Transport Co.	0.077	28.3%
The Energy House Co.	0.110	26.4%

YTD Top % Losers	Close (KWD)	Percent Change
United Foodstuff Industries Group Co.	0.182	(24.8%)
Al Qurain Holding Co.	0.012	(22.6%)
Mashaer Holding Co.	0.130	(20.7%)
Kuwait & Middle East Financial Investment Co	0.039	(18.8%)
Contracting & Marine Services Co.	0.100	(15.3%)

YTD Most Active by Volume	Close (KWD)	Volume (Shrs.)
Gulf Finance House	0.024	881,286,797
Al Dar National Real Estate Co.	0.026	310,693,383
National Ranges Co. (MAYADEEN)	0.035	300,402,288
Investors Holding Group Co.	0.034	294,158,002
ALSAFAT Energy Holding Co.	0.024	225,116,102

YTD Most Active by Value	Close (KWD)	Value (KWD)
ZAIN	0.530	50,577,243
Kuwait Telecommunication Co.	0.700	50,096,831
Kuwait Finance House	0.770	27,529,492
National Bank of Kuwait	0.900	24,059,496
Gulf Finance House	0.024	22,279,334

Notes: NM: Not Meaningful. NA: Not Available. CP: Current Price, Trailing P/E is calculated based on TTM 9M-2014 net profits and current market cap. If calculated P/E is negative or greater than 80, it is represented by NM. Trailing P/BV is based on shareholders' equity as of 30-Sep-2014 and current market cap. Valuation multiples (P/E and P/BV) for companies that have not yet disclosed their 9M-2014 financials are based on TTM 1H-2014 net profits and shareholder's equity as of Sep-14. Dividend Yield for individual stocks is based on the Full Year 2013 Dividends & current market cap, and the sector's average is a weighted average based on the market cap. Beta is calculated on daily share prices returns against KAMCO TRW Index for the companies which have a minimum trading history of two years. Sectors' Beta is calculated based on five year daily returns against KAMCO TRW Index. DTD: daily change. MTD: Beginning of Current Month to Date YTD: Beginning of Year to Date. KWD: Kuwaiti Dinars. \* Companies that vary in their fiscal years are treated separately to adjust for the recent results announcements. #YTD-15 return for individual stocks and sectors is calculated based on the change in market capitalization.

**Disclaimer:** This document and material contained herewith have been produced, compiled, and issued by KAMCO Investment Company-K.S.C. (Public). The Company has obtained the information used in this document from sources it believes to be reliable, but the issuer does not guarantee, neither its accuracy nor completeness, nor provides an independent verification of the material contained therein. KAMCO may, from time to time to the extent permitted by law, participate or invest in other financing transactions with the issuers of the securities, perform services for or solicit business from such issuer and/or have a position or effect transactions in the securities or options thereof. KAMCO may, to extent permitted by the applicable Kuwaiti law or other applicable laws and regulations, effect transactions in the securities before this material is published to recipients. The opinions and estimates expressed herein are those of the issuer and subject to change at any time without any prior notice. Accordingly, no representation or warranty, expressed or implied, is made as to and no reliance should be placed on the fairness, accuracy, completeness or correctness of the information and opinions contained in this document. KAMCO accepts no liability for any loss arising from the use of this document or its contents or otherwise arising in connection therewith. This document should not be relied upon or used in substitution for the exercise of sound judgment. KAMCO shall have no responsibility or liability whatsoever in respect of any inaccuracy in or omission from this or any other document prepared by KAMCO for, or sent by KAMCO to any entity, and any such entity shall be responsible for conducting its own scrutiny, investigation, and analysis of the information contained or referred to in this document and of evaluating the merits and risks involved in the securities forming the subject matter of this or other such document.

Opinions and estimates constitute KAMCO's judgment and are subject to change without prior notice. Past performance is not an indicator of future results. This document does not constitute an offer or invitation to subscribe for or purchase any securities, and neither this document nor anything contained herein shall form the basis of any contract or commitment whatsoever. This document is not an offer to sell or a solicitation to buy any securities. It is being furnished to the reader solely for his/her information and may not be redistributed inside Kuwait or by any jurisdiction outside Kuwait where this action is restricted by law. Entities who receive this report should make themselves aware of and adhere to any such restrictions. By accepting receipt of this report, the reader agrees to be bound by the foregoing limitations.