

MENA Markets Daily Report

August 17, 2015

	Country	Benchmark		Index Value	DTD Change	YTD 2015	FY 2014
MENA Countries							
In this Report...	Kuwait	KSE Price Index	▼	6,262.63	(0.6%)	(4.2%)	(13.4%)
Kuwait 2	Kuwait	KSE Weighted Index	▼	415.68	(0.6%)	(5.3%)	(3.1%)
Saudi Arabia 3	Kuwait	KSE - 15 Index	▼	996.84	(0.5%)	(6.0%)	(0.8%)
UAE - Dubai 4	Saudi Arabia	TADAWUL All Share Index	▼	8,464.06	(2.5%)	1.6%	(2.4%)
UAE - Abu Dhabi 5	UAE - Dubai	DFM General Index	▼	3,930.45	(1.4%)	4.1%	12.0%
Qatar 6	UAE - Abu Dhabi	ADX General Index	▼	4,670.89	(1.3%)	3.1%	5.6%
Bahrain 7	Qatar	QE 20 Index	▼	11,844.43	(0.1%)	(3.6%)	18.4%
Oman 8	Bahrain	Bahrain All Share	▼	1,332.11	(0.2%)	(6.6%)	14.2%
Egypt 9	Oman	MSM 30 Index	▼	6,292.34	(0.4%)	(0.8%)	(7.2%)
Jordan 10	Egypt	EGX 30	▼	7,625.76	(3.2%)	(14.6%)	31.6%
Tunisia 11	Jordan	ASE Index	▲	2,118.76	0.6%	(2.2%)	4.8%
Lebanon 12	Lebanon	KAMCO Beirut SE TRW Index	▼	1,110.85	(0.2%)	1.7%	3.5%
Morocco 13	Tunisia	Tunisia Index	▼	5,571.05	(0.4%)	9.5%	16.2%
Syria 14	Morocco	MASI	▼	9,653.11	(0.4%)	0.3%	5.6%
	Syria	DSE Weighted Index	▼	1,207.09	(0.2%)	(5.0%)	1.7%
Emerging Markets							
	China	SSE Composite Index	▲	3,965.34	0.3%	22.7%	52.9%
	Russia	RUSSIAN RTS INDEX (\$)	▲	835.17	0.8%	5.6%	(45.2%)
	India	SENSEX	▲	28,067.31	1.9%	1.0%	29.9%
	Brazil	BOVESPA Stock Index	▼	47,508.41	(1.0%)	(5.0%)	(2.9%)
	Mexico	BOLSA Index	▼	43,746.72	(0.3%)	1.4%	1.0%
	Korea	KOSPI Index	▲	1,983.46	0.4%	3.0%	(4.8%)
	Taiwan	TAIEX Index	▼	8,305.64	(0.1%)	(11.6%)	8.1%
Global Markets							
	World	MSCI World Index	▲	1,743.89	0.1%	2.0%	2.9%
	Asia	MSCI Asia Pacific	▼	138.28	(0.1%)	0.3%	(2.5%)
	Europe	DJ Stoxx 600	▼	386.24	(0.1%)	12.8%	4.4%
	Europe	FTSEurofirst 300	▼	1,528.15	(0.1%)	11.7%	4.0%
	Emerging Markets	MSCI EM Index	▼	863.83	(0.1%)	(9.7%)	(4.6%)
	U.S.A	S&P 500	▲	2,091.54	0.4%	1.6%	11.4%
	U.S.A	DJIA	▲	17,477.40	0.4%	(1.9%)	7.5%
	U.S.A	NASDAQ Composite	▲	5,048.24	0.3%	6.6%	13.4%
	UK	FTSE 100	▼	6,550.74	(0.3%)	(0.2%)	(2.7%)
	Germany	DAX	▼	10,985.14	(0.3%)	12.0%	2.7%
	Japan	NIKKEI 225	▼	20,519.45	(0.4%)	17.8%	7.1%
	Hong Kong	HANG SENG INDEX	▼	23,991.03	(0.1%)	0.7%	1.3%
Commodities							
	Oil	OPEC Crude	▲	47.28	0.4%	(9.1%)	(49.6%)
	Oil	Brent	▼	49.19	(0.9%)	(24.3%)	(45.6%)
	Oil	Kuwait	▼	45.92	(2.0%)	(12.8%)	(51.7%)
	Natural Gas	NYMEX Natural Gas (USD/MMBtu)	▲	2.80	0.5%	(7.8%)	(33.8%)
	Gold	Gold Spot \$/Oz	▼	1,113.79	(0.2%)	(6.0%)	(1.4%)

Investment Research Department
Kamcoird@kamconline.com

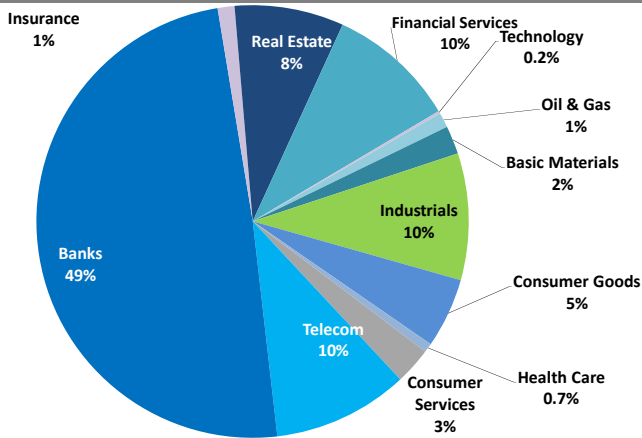
P.O.Box 28873, Safat 13149 Kuwait
Tel: (965) 1852626, Extn: 1153 / 1146
Fax: (965) 22492395

<http://www.kamconline.com>

KAMCO Investment Company - K.S.C
(Public)

Source: Bloomberg & KAMCO Research

Sector Weight by Market Cap



Top 10 Companies by Market Capitalization

Company Name	Market Cap. (Mn KWD)	P/E (X)	ROE* (%)
1- National Bank of Kuwait	4,233.4	15.4	10.5%
2- Kuwait Finance House	2,954.3	22.7	7.7%
3- Zain	1,750.2	9.8	11.8%
4- Ahli United Bank - Bahrain	1,361.5	9.7	14.6%
5- Kuwait Food Co. (Americana)	1,077.4	21.0	13.6%
6- Kuwait Projects Co.	972.6	20.4	10.0%
7- Ahli United Bank - Kuwait	881.9	17.5	15.2%
8- Commercial Bank of Kuwait	861.3	17.2	8.9%
9- Boubyan Bank	856.2	28.6	10.2%
10- Burgan Bank	850.5	13.7	9.9%
Total	15,799	15.55	10.7%

*: ROE is calculated based on TTM 1Q-2015 net profit & shareholders' equity as of 31-March-15

Top Movers and Most Active Stocks

Today's Top % Gainers	Close (KWD)	Change (KWD)	Percent Change
National Industries Co. For Building Materials	0.222	0.010	4.7%
Credit Rating & Collection Co.	0.045	0.002	4.7%
Educational Holding Group	0.255	0.011	4.5%
Kuwait Co. For Process Plant Const. & Cont.	0.234	0.010	4.5%
Arabi Holding Group Co.	0.104	0.004	4.0%

Today's Top % Losers	Close (KWD)	Change (KWD)	Percent Change
National Co. for Consumer Industries	0.089	(0.039)	(30.5%)
Kuwait National Cinema Co.	1.000	(0.100)	(9.1%)
Nafais Holding Co.	0.124	(0.010)	(7.5%)
International Resorts Co.	0.035	(0.003)	(6.7%)
Gulf Investment House	0.041	(0.003)	(5.7%)

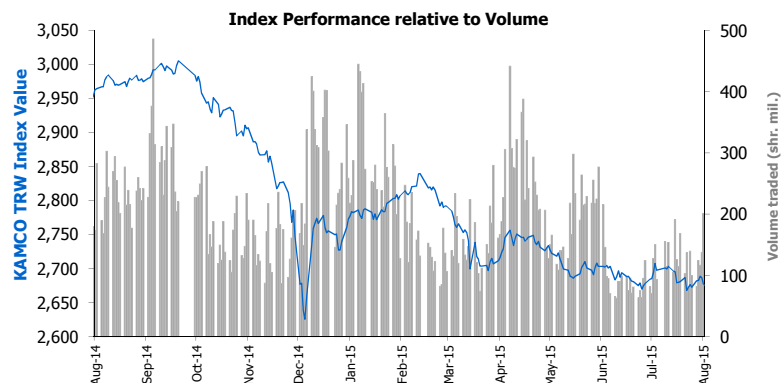
Today's Most Active by Volume	Close (KWD)	Change (KWD)	Volume (Shares)
Al Dar National Real Estate Co.	0.039	0.001	10,007,700
Al-Mal Investment Co.	0.045	0.001	6,138,288
Hits Telecom Holding Co.	0.032	(0.001)	5,781,104
The Securities House	0.056	(0.003)	5,127,065
Gulf Petroleum Investment Co.	0.054	(0.003)	3,861,345

Source: KAMCO Research

Market Capitalization - Sectors' Return

	Market Cap. (KWD Mn)	DTD %	MTD %	YTD %
Kuwaiti Stock Exchange	28,427.5	(0.6%)	(0.8%)	(4.3%)
Oil & Gas	317.9	(0.5%)	(2.1%)	(18.8%)
Basic Materials	606.2	1.8%	0.4%	(6.6%)
Industrials	2,691.6	(0.7%)	2.5%	(1.4%)
Consumer Goods	1,482.6	(1.3%)	(6.1%)	21.8%
Health Care	190.8	0.4%	0.4%	3.8%
Consumer Services	782.5	(1.2%)	1.8%	0.6%
Telecommunications	2,887.9	(2.4%)	(0.1%)	(13.7%)
Banks	13,993.4	(0.4%)	(0.9%)	(4.1%)
Insurance	356.3	=	0.0%	2.7%
Real Estate	2,320.9	0.1%	(1.9%)	(3.0%)
Financial Services	2,742.8	(0.2%)	(1.2%)	(9.0%)
Technology	54.6	0.6%	0.0%	(2.9%)

Market Breadth	▲	31	▼	51	=	110
Benchmark Return	Closing	DTD	DTD	MTD	YTD	
	Value	Chg	% Chg	% Chg	% Chg	
KSE Price Index	6,262.63	(38.5)	(0.6%)	0.1%	(4.2%)	
KSE Weighted Index	415.68	(2.4)	(0.6%)	(0.8%)	(5.3%)	
Kuwait 15 Index	996.84	(5.4)	(0.5%)	(1.8%)	(6.0%)	
Market Cap (KWD Mn)	28,427	(162.2)	(0.6%)	(0.8%)	(4.3%)	



Market Trading Data and Volatility

Trading Indicators	Today's Value	DTD Chg	DTD % Chg	Average Daily YTD 2015	YTD 2014
Volume (Shrs Mn)	83.9	(117.6)	(58.4%)	184.9	214.1
Value Traded (KWD Mn)	8.9	(6.7)	(42.9%)	17.6	25.2
No. of Trades	2,533	(1,401.0)	(35.6%)	4,193	4,638

Market Volatility**	Volatility Since January:				
	2015	2014	2013	2012	2011
KSE Price Index	7.2%	9.4%	10.4%	9.8%	9.6%
KSE Weighted Index	8.1%	9.6%	8.9%	8.6%	9.8%

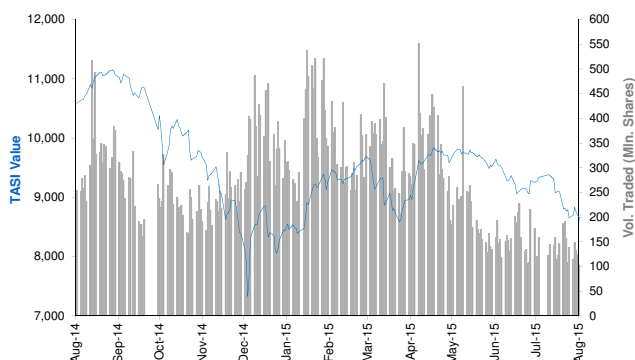
** Annualized Standard Deviation of Daily Returns

Today's Most Active by Value	Close (KWD)	Change (KWD)	Value (KWD)
kuwait Telecommunication Co.	0.890	(0.020)	925,851
ZAIN	0.405	(0.005)	886,447
Agility	0.650	(0.010)	702,646
National Bank of Kuwait	0.840	(0.010)	534,005
Kuwait Finance House	0.620	0.000	477,152

Saudi Tadawul Daily Report

August 17, 2015

Index Performance relative to Volume



Top 10 Stocks by Market Capitalization

	Market Cap. (SAR Mn)	P/E (X)	ROE* (%)
1- Saudi Basic Industries Corp	270,600	12.9	12.6%
2- Saudi Telecom	132,080	11.9	18.4%
3- National Commercial Bank	118,540	13.7	18.3%
4- Al-Rajhi Bank	101,969	15.3	15.8%
5- Saudi Electricity Co.	73,624	28.5	4.5%
6- Kingdom Holding Co.	70,708	NM	2.9%
7- Jabal Omar Development Company	63,645	NM	0.0%
8- AL-Marai Co.	56,664	33.2	15.4%
9- Samba Financial Group	52,000	10.3	13.0%
10- SABB	47,850	11.1	16.5%

Subtotal 987,680 15.96 12.6%

* ROE is based on TTM 1Q-2015 Net Profit & Shareholders' Equity as of 31-March-15

Today's Top Movers and Most Active Stocks

Best Return Performers	Price (SAR)	Daily Return	Value (SAR 000's)
BUPA Arabia for Cooperative Ins.	266.20	2.1%	25,743
Al-Abdulatif Industrial Group	37.94	1.0%	393
Mouwasat Medical Services Co.	143.00	0.8%	980
Banque Saudi Fransi	32.71	0.3%	3,268
Tihama Advertising & Public Relations Co.	90.03	0.3%	10,425

Worst Return Performers	Price (SAR)	Daily Return	Value (SAR 000's)
Saudi Transport & Investment Co.	60.81	(9.8%)	60,009
Takween Advanced Industries	58.25	(9.6%)	43,849
Al-Babtain Power & Telecom. Co.	36.94	(9.3%)	24,742
The National Shipping Co of Saudi Arabia	39.01	(8.3%)	147,737
Saudi Industrial Export Co.	41.17	(7.6%)	16,014

Most Active Stocks By Volume	Price (SAR)	Daily Return	Volume ('000 Shrs)
Alinma Bank	20.12	(5.6%)	32,220
Saudi Kayan	9.58	(4.5%)	12,076
Dar Al Arkan Real Estate Dev. Co.	8.10	(2.5%)	8,551
ZAIN KSA	11.05	(2.1%)	8,376
Emaar The Economic City	11.67	(4.7%)	7,883

Source: KAMCO Research

Sectors' Return & Valuation Multiples

	Market Cap. (SAR Mn)	MTD Return	P/E (X)	P/BV (X)	Yield (%)
Saudi Stock Exchange	1,892,213	(6.6%)	17.7	2.0	2.5%
Banks & Financial	533,547	(5.2%)	12.7	1.8	2.1%
Petrochemical Industries	431,972	(8.4%)	14.7	1.7	2.8%
Cement	80,920	(7.6%)	13.0	2.6	5.9%
Retail	89,554	(3.9%)	29.8	6.1	1.5%
Energy & Utilities	75,761	(3.4%)	27.6	1.3	3.9%
Agric. & Food Ind.	123,037	(3.9%)	24.4	4.2	2.2%
Telecom	160,943	(6.1%)	22.8	1.9	4.3%
Insurance	48,277	(7.9%)	64.9	2.8	0.3%
Multi-Inv.	77,733	(4.9%)	66.7	2.1	2.6%
Indust. Inv.	68,846	(9.5%)	22.2	1.7	1.6%
Bldg. & Const.	24,088	(11.2%)	43.0	2.2	2.9%
Real Estate Dev.	116,695	(8.1%)	43.0	2.2	0.6%
Transport	30,916	(16.1%)	16.8	2.3	2.0%
Media & Publishing	3,631	(5.0%)	NM	1.6	0.0%
Hotel & Tourism	26,292	(8.2%)	17.6	4.6	1.7%

Sectors' MTD Return is based on the Change in market cap. and it might not conform with the benchmark return for each sector

Market Return, Volatility & Trading Indicators

Market Return	Closing Value	DTD Chg	DTD % Chg	MTD % Chg	YTD-15 % Chg
Tadawul All Share Index	8,464.06	(219.7)	(2.5%)	(7.0%)	1.6%
Market Cap (SAR Mn)	1,892,213	(45,507.6)	(2.3%)	(6.6%)	4.2%
Benchmark Volatility**	Since Jan-14	Since Jan-13	Since Jan-12	Since Jan-11	Since Jan-10
Tadawul All Share Index	19.7%	16.9%	15.9%	16.8%	16.6%
** Annualized Standard Deviation of Daily Returns					
Trading Indicators	Today's Value	DTD Chg	DTD % Chg	Average Daily YTD-15	YTD-14
Volume (Mn Shares)	164	62	61.3%	274	280
Value Traded (SAR Mn)	4,252	1,339	46.0%	7,455	8,522
No. of Trades	100,774	27,880	38.2%	131,933	143,183

Market Breadth 7 156 = 6

YTD-2015 Top Movers and Most Active Stocks

YTD-15 Best Return Performers	Price (SAR)	YTD Val (SAR Mn)	YTD Vol ('000 Shrs)	YTD-15 Return
The Co for Cooperative Ins.	101.26	7,478	93,530	102.5%
Saudi Transport & Investment Co.	60.81	10,194	194,500	78.8%
BUPA Arabia for Cooperative Ins.	266.20	3,476	17,223	55.3%
Saudi Company for Hardware	107.39	4,999	38,003	53.6%
Buruj Cooperative Insurance Co.	25.59	3,459	89,044	47.7%

YTD-15 Worst Return Performers	Price (SAR)	YTD Val (SAR Mn)	YTD Vol ('000 Shrs)	YTD-15 Return
Middle East Specialised Cables	11.78	11,274	604,391	(46.3%)
SALAMA Cooperative Insurance Company	15.07	1,746	70,153	(45.5%)
Solidarity Saudi Takaful co.	11.81	7,023	366,728	(41.9%)
Mediterranean & Gulf Ins. & Re-ins Co.	29.59	9,790	187,616	(41.2%)
Saudi Arabian Cooperative Ins. Co.	21.27	3,835	106,437	(38.9%)

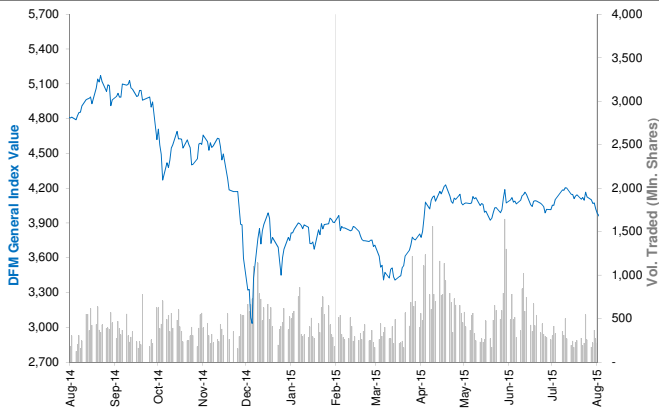
YTD-15 Most Active Stocks by Volume	Price (SAR)	YTD Val (SAR Mn)	YTD Vol ('000 Shrs)	YTD-15 Return
Dar Al Arkan Real Estate Dev. Co.	8.10	59,485	6,335,807	(0.6%)
Alinma Bank	20.12	105,887	4,655,718	(1.2%)
Saudi Kayan	9.58	25,081	2,052,362	(12.8%)
ZAIN KSA	11.05	18,691	1,984,653	(7.4%)
Emaar The Economic City	11.67	18,511	1,256,568	(2.5%)

YTD-15 Return: Is a total return which accounts in addition to the change in price the cash & share dividends announced during the year.

Dubai Financial Market Daily Report

August 17, 2015

Index Performance relative to Volume



Top 10 Stocks by Market Capitalization

	Market Cap (AED Mn)	P/E (X)	ROE* (%)
1- Emirates NBD	55,578	9.6	12.5%
2- EMAAR Properties	52,910	13.7	10.8%
3- EMAAR MALLS GROUP	39,563	22.2	12.6%
4- Dubai Islamic Bank	28,625	10.0	15.7%
5- Emirates Integrated Telecom. (DU)	24,137	11.5	28.4%
6- Mashreq Bank	19,782	8.0	15.4%
7- DAMAC Properties Dubai	19,778	4.4	66.4%
8- Commercial Bank of Dubai	14,798	12.2	16.1%
9- Dubai Financial Market	14,240	23.3	7.8%
10- Arabtec Holding P.J.S.C.	9,274	NM	NM
Subtotal	295,332	11.44	14.2%

* ROE is based on TTM 1Q-2015 Net Profit & Shareholders' Equity as of 31-March-15

Today's Top Movers and Most Active Stocks

Best Return Performers	Price (AED)	Daily Return	Value Traded (AED)
Ektitab Holding Co.	0.512	2.4%	48,360
Al-Madina for Finance & Investment	0.706	0.9%	573,179
DAMAC Properties Dubai	3.560	0.8%	14,846,422
Takaful House	0.607	0.8%	33,753
Emirates Integrated Telecom. (DU)	5.280	0.4%	128,426

Worst Return Performers	Price (AED)	Daily Return	Value Traded (AED)
Islamic Arab Insurance Co.	0.551	(8.2%)	13,447,546
National Cement Co.	3.350	(6.9%)	83,501
Arabtec Holding P.J.S.C.	2.110	(5.4%)	52,744,161
Drake and Scull International	0.702	(2.5%)	6,394,893
Dubai Parks And Resorts	1.210	(2.4%)	6,126,828

Most Active Stocks by Volume	Price (AED)	Daily Return	Volume Traded ('000 Shrs)
Gulf Finance House	0.710	(0.7%)	35,373
Arabtec Holding P.J.S.C.	2.110	(5.4%)	24,973
Islamic Arab Insurance Co.	0.551	(8.2%)	24,150
Drake and Scull International	0.702	(2.5%)	9,042
Hits Telecom Holding Co.	0.400	(0.2%)	7,392

Source: KAMCO Research

Sectors' Return & Valuation Multiples

	Market Cap. (AED Mn)	MTD % Chg	P/E (X)	P/BV (X)	Yield (%)
Dubai Financial Market	371,381	(3.8%)	12.2	1.4	2.3%
Banking	135,882	(3.3%)	10.4	1.3	3.1%
Consumer Staples	10,832	(4.5%)	NM	1.4	0.7%
Investment & Financial	28,774	(7.3%)	13.3	1.3	3.5%
Insurance	5,956	(3.5%)	7.7	0.6	6.2%
Industrial	4,561	2.8%	36.2	0.6	2.0%
Real Estate & Construction	130,268	(4.6%)	NM	1.7	0.9%
Telecommunication	24,426	(1.8%)	11.6	2.9	3.7%
Transportation	27,809	(1.4%)	30.6	1.5	2.2%
Services	2,875	(7.6%)	2.8	0.4	1.3%

Sectors' MTD Return is based on the Change in market cap. and it might not conform with the benchmark return for each sector

Market Breadth

▲ 5 ▼ 24 = 31

Market Return, Volatility & Trading Indicators

Market Return	Closing Value	DTD Chg	DTD % Chg	MTD % Chg	YTD-15 % Chg
DFM General Index	3,930.45	(55.0)	(1.4%)	(5.1%)	4.1%
Market Cap (AED Mn)	371,381	(3,823)	(1.0%)	(3.8%)	10.8%

Benchmark Volatility**

	Jan-2014	Jan-2013	Jan-2012	Jan-2011	Jan-2010
DFM General Index	32.9%	29.9%	26.9%	25.2%	24.5%

** Annualized Standard Deviation of Daily Returns

Trading Indicators	Today's Value	DTD Chg	DTD % Chg	Average Daily YTD-15	YTD-14
Volume (Mn Shares)	161	(58.2)	(26.6%)	468	770
Value Traded (AED Mn)	257	(137.1)	(34.8%)	741	1,782
No. of Trades	3,758	(704)	(15.8%)	7,142	10,834

YTD-2015 Top Movers and Most Active Stocks

YTD-15 Best Return Performers	Price (AED)	Value Traded (AED '000)	Volume ('000 Shrs)	YTD-15 Return
Takaful Emarat	1.780	187,032	142,768	122.5%
Amlak Finance	2.130	11,304,576	5,063,554	108.8%
Al-Madina for Finance & Investment	0.706	222,613	410,950	95.6%
Dubai Parks And Resorts	1.210	4,783,429	4,759,370	65.8%
United Kaipara Dairies Co.	7.910	12	1	52.1%

YTD-15 Worst Return Performers	Price (AED)	Value Traded (AED '000)	Volume ('000 Shrs)	YTD-15 Return
Gulf Navigation Holding	0.422	632,227	1,711,622	(207.7%)
Int'l Financial Advisors Co.	0.524	3,293	6,483	(38.4%)
Ajman Bank	1.880	284,583	125,941	(29.5%)
Arabtec Holding P.J.S.C.	2.110	15,431,959	5,528,390	(28.0%)
National Cement Co.	3.350	52,860	12,770	(25.6%)

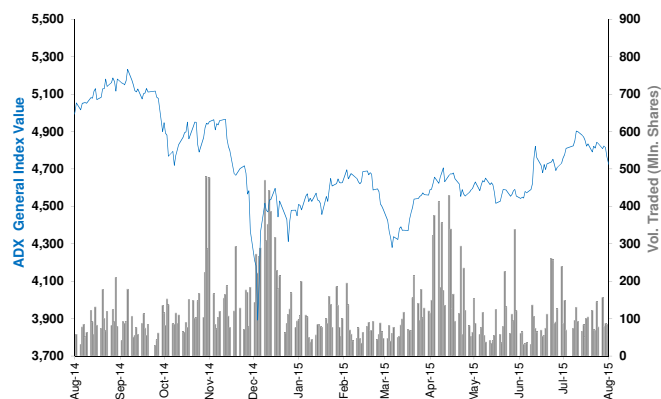
YTD-15 Most Active Stocks by Volume	Price (AED)	Value Traded (AED '000)	Volume ('000 Shrs)	YTD-15 Return
Gulf Finance House	0.710	9,965,762	19,632,683	(5.0%)
Union Properties	1.080	8,783,697	7,112,198	(6.3%)
Arabtec Holding P.J.S.C.	2.110	15,431,959	5,528,390	(28.0%)
Amlak Finance	2.130	11,304,576	5,063,554	108.8%
Deyaar Development	0.755	4,076,292	4,953,103	(11.2%)

YTD-15 Return: Is a total return which accounts in addition to the change in price the cash & share dividends announced during the year.

Abu Dhabi Securities Exchange Daily Report

August 17, 2015

Index Performance relative to Volume



Top 10 Stocks by Market Capitalization

	Market Cap. (AED Mn)	P/E (X)	ROE* (%)
1- Emirates Telecom. Co.	117,841	13.0	22.5%
2- First Gulf Bank	66,600	11.6	18.2%
3- National Bank Of Abu Dhabi	48,072	8.6	14.9%
4- Abu Dhabi Commercial Bank	46,667	10.7	17.1%
5- AL DAR Properties Co.	19,421	8.1	13.3%
6- Union National Bank	18,022	8.6	12.6%
7- Abu Dhabi Islamic Bank	15,151	8.5	12.7%
8- National Bank of Ras Al-Khaimah	12,421	8.4	19.8%
9- United Arab Bank	6,417	10.6	20.6%
10- National Bank of Fujairah	5,126	9.5	13.8%
Subtotal	355,737	10.57	17.0%

* ROE is based on TTM 1Q-2015 Net Profit & Shareholders' Equity as of 31-March-15

Today's Top Movers and Most Active Stocks

Best Return Performers	Price (AED)	Daily Return	Value (AED)
Gulf Pharmaceutical Co.	2.73	6.2%	7,194
Sharjah Cement & Industrial Dev. Co.	1.05	4.0%	52,500
Arkan Building Materials Co.	1.02	2.0%	92,333
Abu Dhabi Islamic Bank	5.05	1.0%	825,196
Emirates Telecom. Co.	13.55	0.4%	13,856,828

Worst Return Performers	Price (AED)	Daily Return	Value (AED)
Abu Dhabi National Takaful Co.	5.69	(10.0%)	1,195
Abu Dhabi National Co. for Bldg. Materials	0.61	(6.2%)	16,150
Dana Gas	0.55	(5.2%)	42,615,924
Ras Al Khaimah Cement Co.	0.89	(4.3%)	7,709
AL DAR Properties Co.	2.47	(3.5%)	35,389,606

Most Active Stocks by Volume	Price (AED)	Daily Return	Volume ('000 Shrs)
Dana Gas	0.55	(5.2%)	78,148
Eshraq Properties Co.	0.73	(2.7%)	14,317
AL DAR Properties Co.	2.47	(3.5%)	14,027
Methaq Takaful Insurance Co.	1.11	0.0%	3,863
Ras Al Khaimah Properties	0.63	(1.6%)	3,722

Source: KAMCO Research

Sectors' Return & Valuation Multiples

	Market Cap. (AED Mn)	MTD % Chg	P/E (X)	P/BV (X)	Dividend Yield (%)
ADX	456,699	(3.2%)	8.5	1.4	4.1%
Banks	238,092	(3.2%)	10.0	1.5	4.5%
Inv. & Financial Services	4,757	(4.7%)	0.3	1.3	12.0%
Real Estate	22,378	(7.9%)	11.5	0.9	0.8%
Energy	7,801	(0.8%)	NM	0.5	3.7%
Consumer Staples	5,921	(1.7%)	18.3	1.9	1.4%
Industrial	12,694	2.7%	24.6	0.9	4.5%
Insurance	8,898	(0.6%)	NM	0.5	4.3%
Telecommunication	145,721	(3.5%)	13.3	2.3	3.8%
Services	10,437	1.8%	14.1	0.7	3.4%

Sectors' MTD Return is based on the Change in market cap. and it might not conform with the benchmark return for each sector

Market Breadth	▲	5	▼	17	=	43
----------------	---	---	---	----	---	----

Market Return, Volatility & Trading Indicators

Market Return	Closing Value	DTD Chg	DTD % Chg	MTD % Chg	YTD-15 % Chg
ADX General Index	4,670.89	(59.38)	(1.3%)	(3.4%)	3.1%
Market Cap (AED Mn)	456,699	(4,836)	(1.0%)	(3.2%)	(1.6%)

Benchmark Volatility**	Volatility Since:				
	Jan-2014	Jan-2013	Jan-2012	Jan-2011	Jan-2010
ADX General Index	19.1%	15.9%	13.5%	12.7%	12.1%

** Annualized Standard Deviation of Daily Returns

Trading Indicators	Today's Value	DTD Chg	DTD % Chg	Average Daily YTD-15	YTD-14
Volume (Mn Shares)	121	65.1	115.6%	108	283.2
Value Traded (AED Mn)	156	(23.2)	(13.0%)	225	726.1
No. of Trades	1,439	14	1.0%	1,796	3,984

YTD-2015 Top Movers and Most Active Stocks

YTD-15 Best Return Performers	Price (AED)	YTD-Val ('000 AED)	Volume ('000 Shrs)	YTD-15 Return
Abu Dhabi Ship Building Co.	3.75	37,166	14,952	97.4%
Methaq Takaful Insurance Co.	1.11	420,719	430,824	52.1%
Fujairah Building Industrial Co.	1.90	674	476	40.9%
Gulf Medical Projects	2.80	1,186	458	40.0%
Emirates Telecom. Co.	13.55	3,889,065	318,062	36.1%

YTD-15 Worst Return Performers	Price (AED)	YTD-Val ('000 AED)	Volume ('000 Shrs)	YTD-15 Return
Ooredoo	84.65	3,905	37	(41.0%)
Al Dhafra Insurance Co.	4.80	351	61	(37.7%)
Abu Dhabi National Hotels	2.85	39,024	13,746	(28.8%)
National Bank Of Abu Dhabi	10.15	1,025,273	87,287	(27.5%)
Abu Dhabi National Co. for Bldg. Materials	0.61	27,629	42,524	(23.8%)

YTD-15 Most Active Stocks by Volume	Price (AED)	YTD-Val ('000 AED)	Volume ('000 Shrs)	YTD-15 Return
Eshraq Properties Co.	0.73	5,206,708	6,054,936	1.3%
Dana Gas	0.55	1,712,112	3,275,455	10.0%
AL DAR Properties Co.	2.47	7,620,767	2,878,945	(6.8%)
Ras Al Khaimah Properties	0.63	1,142,254	1,587,465	(14.9%)
Waha Capital Co.	2.36	1,569,197	554,854	(16.3%)

YTD-15 Return: Is a total return which accounts in addition to the change in price the cash & share dividends announced during the year.

Qatar Exchange Daily Report

August 17, 2015

Index Performance relative to Volume



Sectors' Return & Valuation Multiples

	Market Cap. (QAR Mn)	MTD % Chg	P/E (X)	P/B (X)	Yield (%)
Qatar Exchange	624,195	(0.2%)	13.8	2.1	4.1%
Banking & Finance	251,067	0.2%	12.7	2.2	4.4%
Goods & Consumer Services	28,129	(3.1%)	14.9	2.4	4.5%
Industrial	175,145	(1.4%)	17.7	3.2	4.2%
Insurance	25,831	1.5%	13.8	2.0	2.9%
Real Estate	78,694	2.4%	10.0	1.3	3.0%
Telecom	38,170	(2.4%)	20.7	1.4	3.8%
Transport	27,159	(0.4%)	12.8	1.6	5.1%

Sectors' MTD Return is based on the Change in market cap. and it might not conform with the benchmark return for each sector

Market Breadth

▲ 14 ▼ 21 = 8

Top 10 Stocks by Market Capitalization

	Market Cap. (QAR Mn)	P/E (X)	ROE* (%)
1- Qatar National Bank	126,651	11.8	20.0%
2- Industries Qatar	81,494	14.3	18.8%
3- Ezdan Holding Group Co.	48,673	34.2	4.8%
4- Masraf Al Rayan	33,450	16.1	19.7%
5- Mesaieed Petrochemical Holding Co.	28,518	19.7	10.9%
6- Qatar Islamic Bank	26,370	15.8	14.0%
7- Ooredoo (formerly Q-Tel)	25,337	14.5	8.3%
8- Qatar Electricity & Water Co.	24,035	15.2	25.4%
9- Commercial Bank of Qatar	19,271	10.7	12.6%
10- Barwa Real Estate Co.	19,067	3.3	32.1%

Subtotal 432,867 11.33 18.9%

* ROE is based on TTM 1Q-2015 Net Profit & Shareholders' Equity as of 31-March-15

Today's Top Movers and Most Active Stocks

Best Return Performers	Price (QAR)	Daily Return	Value (QAR)
Ezdan Holding Group Co.	18.35	2.6%	28,875,783
Zad Holding Co.	98.00	2.2%	4,999
Qatari Investors Group	49.50	2.1%	569,331
Qatar Islamic Insurance	81.20	1.9%	24,812
Qatar International Islamic Bank	78.50	1.2%	1,125,012

Worst Return Performers	Price (QAR)	Daily Return	Value (QAR)
Qatar General Insurance & Reins. Co.	54.20	(2.5%)	966,441
Industries Qatar	134.70	(2.0%)	15,894,322
Medicare Group	173.00	(2.0%)	793,858
Qatar Insurance Co.	101.60	(1.8%)	671,371
Ooredoo	79.10	(1.1%)	5,074,425

Most Active Stocks by Volume	Price (QAR)	Daily Return	Volume (Shares)
Ezdan Holding Group Co.	18.35	2.6%	1,581,874
The Commercial Bank of Qatar	59.00	0.5%	533,728
Barwa Real Estate Co.	49.00	0.4%	381,548
Gulf International Services	66.90	0.5%	279,458
Masraf Al Rayan	44.60	(0.8%)	265,548

Source: KAMCO Research

Market Return, Volatility & Trading Indicators

Market Return	Closing Value	DTD Chg	DTD % Chg	MTD % Chg	YTD-15 % Chg
QE 20 Index	11,844.43	(13.58)	(0.1%)	0.5%	(3.6%)
Market Cap (QAR Mn)	624,195	(1,599)	(0.3%)	(0.2%)	(7.8%)

Benchmark Volatility**

	Jan-2014	Jan-2013	Jan-2012	Jan-2011	Jan-2010
QE 20 Index	17.2%	16.2%	14.1%	14.2%	14.3%

** Annualized Standard Deviation of Daily Returns

Trading Indicators	Today's Value	DTD Chg	DTD % Chg	Average Daily YTD-15	YTD-14
--------------------	------------------	------------	--------------	-------------------------	--------

Volume ('000 Shares)	4,454	(786)	(15.0%)	10,284	19,572
Value Traded (QAR Mn)	198	(71)	(26.5%)	423	832
No. of Trades	3,275	(625)	(16.0%)	5,173	8,985

YTD-2015 Top Movers and Most Active Stocks

YTD-15 Best Return Performers	Price (QAR)	YTD Value (QAR 000's)	YTD Volume (Shares 000's)	YTD-15 Return
Qatari German Co. for Medical Devices	15.35	718,118	46,502	51.2%
Medicare Group	173.00	787,163	5,087	47.9%
Al Meera Consumer Goods Co.	270.50	777,287	3,381	35.3%
Gulf Warehousing Co.	76.00	452,334	6,853	34.8%
Doha Insurance Co.	25.25	75,720	2,868	29.3%

YTD-15 Worst Return Performers	Price (QAR)	YTD Value (QAR 000's)	YTD Volume (Shares 000's)	YTD-15 Return
Ooredoo	79.10	1,304,567	13,041	(36.2%)
Diala Brokerage & Inv. Hldg. Co.	22.61	585,042	15,035	(32.4%)
Gulf International Services	66.90	5,330,209	60,008	(31.1%)
Mesaieed Petrochemical Holding Co.	22.70	855,950	31,943	(23.1%)
Industries Qatar	134.70	4,488,683.1	30,888.84	(19.8%)

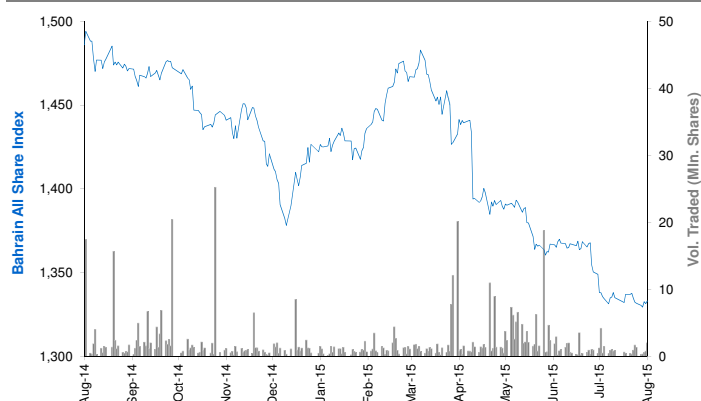
YTD-15 Most Active Stocks by Vol.	Price (QAR)	YTD Value (QAR 000's)	YTD Volume (Shares 000's)	YTD-15 Return
Ezdan Holding Group Co.	18.35	6,177,282	341,307	23.0%
Vodafone Qatar	15.18	3,534,770	204,257	(7.7%)
Barwa Real Estate Co.	49.00	8,073,169	168,715	16.9%
Mazaya Qatar R.E Development Co.	17.65	1,629,761	83,653	(3.2%)
Masraf Al Rayan	44.60	3,822,771	82,517	0.9%

YTD-15 Return: Is a total return which accounts in addition to the change in price the cash & share dividends announced during the year.

Bahrain Bourse Daily Report

August 17, 2015

Index Performance relative to Volume



Sectors' Return & Valuation Multiples

	Market Cap. (BHD Mn)	MTD % Chg	P/E (X)	P/B (X)	Yield (%)
Bahrain Bourse	7,845	0.1%	9.7	1.0	3.6%
Commercial Banks	3,452	(0.1%)	10.6	1.4	3.6%
Investment	2,239	0.8%	9.3	0.7	3.8%
Insurance	157	0.3%	12.1	0.8	4.4%
Service	1,076	0.8%	11.3	1.1	2.2%
Hotel & Tourism	208	0.5%	11.7	1.0	1.5%
Industrial	713	(2.0%)	6.1	0.7	5.5%

Sectors' MTD Return is based on the Change in market cap. and it might not conform with the benchmark return for each sector

Market Breadth

▲	2	▼	3	=	35
---	---	---	---	---	----

Top 10 Stocks by Market Capitalization

	Market Cap. (BHD Mn)	P/E (X)	ROE* (%)
1- Ahli United Bank (Price in USD)	1,721	8.97	15.8%
2- National Bank of Bahrain	766	14.23	14.7%
3- Arab Banking Corp. (Price in USD)	733	6.50	7.9%
4- Aluminum Bahrain	693	5.95	12.5%
5- Bahrain Telecommunications Co.	556	12.43	8.7%
6- Bank of Bahrain and Kuwait	465	9.13	14.7%
7- United Gulf Bank	325	NM	2.6%
8- Al Salam Bank	295	19.28	4.9%
9- Al Baraka Banking (Price in USD)	284	4.86	12.2%
10- Gulf Finance House (Price in USD)	256	52.48	1.8%

Subtotal	6,094	9.33	10.9%
-----------------	--------------	-------------	--------------

* ROE is based on TTM 1Q2015 Net Profit & Shareholders' Equity as of 31-March-15

Today's Top Movers and Most Active Stocks

Best Return Performers	Price (BHD)	Daily Return	Value (BHD)
TRAFCO	0.240	7.1%	10,613
Arab Insurance Group (USD)	0.475	3.3%	10,492

Worst Return Performers	Price (BHD)	Daily Return	Value (BHD)
AlKhaleeji Commercial Bank	0.064	(1.5%)	11,291
Ahli United Bank (USD)	0.710	(0.7%)	83,352
Bahrain Telecommunications Co.	0.334	(0.6%)	40,080

Most Active Stocks by Volume	Price (BHD)	Daily Return	Volume (Shares)
ITHMAR Bank (USD)	0.140	0.0%	580,000
Ahli United Bank (USD)	0.710	(0.7%)	311,400
AlKhaleeji Commercial Bank	0.064	(1.5%)	176,416
Bahrain Telecommunications Co.	0.334	(0.6%)	120,000
Arab Insurance Group (USD)	0.475	3.3%	58,500

Source: KAMCO Research

Market Return, Volatility & Trading Indicators

Market Return	Closing Value	DTD Chg	DTD % Chg	MTD % Chg	YTD-15 % Chg
Bahrain All Share Index	1,332.11	(2.36)	(0.2%)	0.0%	(6.6%)
Market Cap (BHD Mln)	7,844.56	(8.30)	(0.1%)	0.1%	(3.1%)

Benchmark Volatility**	Volatility Since:				
	Jan-2014	Jan-2013	Jan-2012	Jan-2011	Jan-2010
Bahrain All Share Index	7.10%	6.9%	6.8%	7.3%	7.8%

** Annualized Standard Deviation of Daily Returns

Trading Indicators	Today's Value	DTD Chg	DTD % Chg	Average Daily YTD-15	YTD-14
Volume ('000 Shares)	1,306	1,030	372.8%	1,802	5,887
Value Traded (BHD '000)	189	98	108.2%	400	1,374
No. of Trades	29	5	20.8%	47	79

YTD-2015 Top Movers and Most Active Stocks

YTD-15 Best Return Performers	Price (BHD)	YTD-Val (BHD '000)	YTD Vol (Shares)	YTD-15 Return
AlKhaleeji Commercial Bank	0.064	4,379	73,959,907	48.8%
BANADER Co. For Hotels	0.077	27	404,077	37.5%
Al Salam Bank	0.138	3,433	25,926,025	37.0%
Al-Ahlia Insurance Co.	0.330	977	2,965,587	22.2%
Gulf Finance House (USD)	0.215	117	1,302,389	21.9%

YTD-15 Worst Return Performers	Price (BHD)	YTD-Val (BHD '000)	YTD Vol (Shares)	YTD-15 Return
Takaful International Co.	0.100	2,502	26,054,619	(31.0%)
United Gulf Investment Corporation	0.100	10.0	99,114	(24.8%)
Bank of Bahrain and Kuwait	0.430	8,221	18,688,425	(16.8%)
Al Baraka Banking Group (USD)	0.675	968	3,593,853	(14.5%)
Inovest BSC. (USD)	0.180	108	1,584,146	(14.3%)

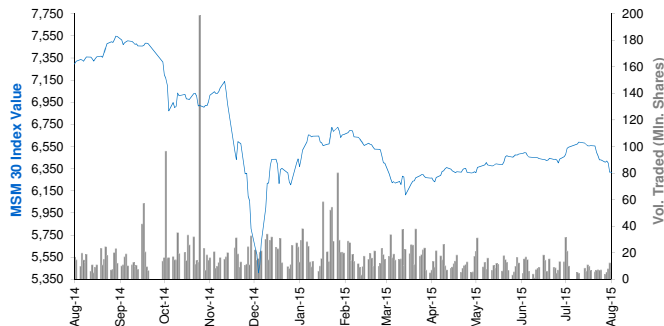
YTD-15 Most Active Stocks by Volume	Price (BHD)	YTD-Val (BHD '000)	YTD Vol (Shares)	YTD-15 Return
AlKhaleeji Commercial Bank	0.064	4,379	73,959,907	48.8%
Ahli United Bank (USD)	0.710	18,296	63,253,572	(4.3%)
Takaful International Co.	0.100	2,502	26,054,619	(31.0%)
Al Salam Bank	0.138	3,433	25,926,025	37.0%
Bank of Bahrain and Kuwait	0.430	8,221	18,688,425	(16.8%)

YTD-15 Return: Is a total return which accounts in addition to the change in price the cash & share dividends announced during the year.

Muscat Securities Market Daily Report

August 17, 2015

Index Performance relative to Volume



Sectors' Return & Valuation Multiples

	Market Cap. (OMR Mn)	MTD % Chg	P/E (X)	P/B (X)	Yield (%)
Muscat Securities Mkt	8,009	(3.4%)	10.50	1.48	3.9%
Financial	3,518	(4.8%)	8.62	1.04	3.7%
Industrial	1,075	(3.2%)	12.06	1.70	4.8%
Services	3,416	(2.0%)	12.86	2.42	3.9%

Sectors' MTD Return is based on the Change in market cap. and it might not conform with the benchmark return for each sector

Market Breadth	▲	5	▼	15	=	40
----------------	---	---	---	----	---	----

Top 10 Stocks by Market Capitalization

	Market Cap. (OMR Mn)	P/E (X)	ROE* (%)
1- Oman Telecom Co.	1,294	10.55	22.3%
2- Bank Muscat	1,183	7.09	13.2%
3- Ooredoo	500	12.58	21.5%
4- National Bank of Oman	456	8.66	14.9%
5- Bank Dhofar	417	9.93	12.7%
6- Ahli Bank	299	11.66	15.5%
7- Raysut Cement	284	11.26	19.0%
8- HSBC Bank Oman	264	20.48	4.3%
9- Sembcorp Salalah	248	34.62	9.6%
10- Bank Sohar	232	8.12	14.7%

Subtotal 5,378 10.04 15.0%

* ROE is based on TTM 1Q2015 Net Profit & Shareholders' Equity as of 31-March-15

Market Return, Volatility & Trading Indicators

Market Return	Closing Value	DTD Chg	DTD % Chg	MTD % Chg	YTD-15 % Chg
MSM 30 Index	6,292.34	(26.28)	(0.4%)	(4.1%)	(0.8%)
Market Cap (OMR Mn)	8,009.11	(35.79)	(0.4%)	(3.4%)	3.6%

Benchmark Volatility**	Volatility Since:				
	Jan-2014	Jan-2013	Jan-2012	Jan-2011	Jan-2010
MSM 30 Index	13.6%	11.9%	10.9%	11.2%	10.8%

** Annualized Standard Deviation of Daily Returns

Trading Indicators	Today's Value	DTD Chg	DTD % Chg	Average Daily YTD-15	YTD-14
--------------------	------------------	------------	--------------	-------------------------	--------

Volume ('000 Shares)	4,303	(2,079)	(32.6%)	15,265	21,967
Value Traded (OMR '000)	2,693	(339)	(11.7%)	4,619	8,364
No. of Trades	460	(32)	(6.5%)	852	1,291

Today's Top Movers and Most Active Stocks

Best Return Performers	Price (OMR)	Daily Return	Value (OMR)
United Power	2.160	9.9%	2,910
Sharqiyah Desalination	4.100	2.5%	2,260
Oman & Emirates Investment	0.112	0.9%	7,780
Shell Oman Marketing	2.015	0.8%	124,900
Sembcorp Salalah	2.600	0.4%	547,540

Worst Return Performers	Price (OMR)	Daily Return	Value (OMR)
Galfar Engineering	0.108	(3.6%)	108,640
Gulf Investment Services	0.118	(3.3%)	4,200
Ahli Bank	0.210	(2.8%)	45,440
Al Batinah Dev. Inv. Holding	0.110	(2.7%)	2,470
Al Sharqia Inv. Holding	0.124	(2.4%)	6,220

Most Active Stocks by Volume	Price (OMR)	Daily Return	Volume (Shares)
Galfar Engineering	0.108	(3.6%)	1,009,660
Ooredoo	0.768	0.0%	669,399
Al Anwar Holding	0.208	(1.0%)	396,052
Oman Telecom Co.	1.725	(1.4%)	370,903
Bank Muscat	0.516	(0.4%)	240,854

Source: KAMCO Research

YTD-2015 Top Movers and Most Active Stocks

YTD-15 Best Return Performers	Price (OMR)	YTD-Value (OMR 000's)	YTD Vol. (Shares 000's)	YTD-15 Return
Gulf International Chemicals	0.261	11,005	46,266	71.7%
United Power	2.160	329	186	63.0%
ONIC. Holding	0.480	7,853	19,014	51.9%
Al Suwadi Power	2.230	3,321	16,352	32.2%
Al Batinah power	0.220	2,873	14,106	28.7%

YTD-15 Worst Return Performers	Price (OMR)	YTD-Value (OMR 000's)	YTD Volume (Shares 000's)	YTD-15 Return
Renaissance Services	0.224	14,130	35,519	(52.7%)
Port Services Corporation	0.180	486	1,796	(49.2%)
Al Jazeera Steel Products Co.	0.225	3,147	10,836	(33.0%)
Galfar Engineering	0.108	15,404	103,408	(32.9%)
National Gas Co.	0.225	3,068	6,973	(31.0%)

YTD-15 Most Active Stocks by Volume	Price (OMR)	YTD-Value (OMR 000's)	YTD Volume (Shares 000's)	YTD-15 Return
Al Anwar Holding	0.208	127,754	506,159	25.2%
Gulf Investment Services	0.118	32,184	199,769	(16.9%)
Bank Muscat	0.516	109,726	196,976	(6.9%)
Oman & Emirates Investment	0.112	24,675	195,899	(8.9%)
Global Financial Investment Co.	0.119	17,581	150,936	(2.5%)

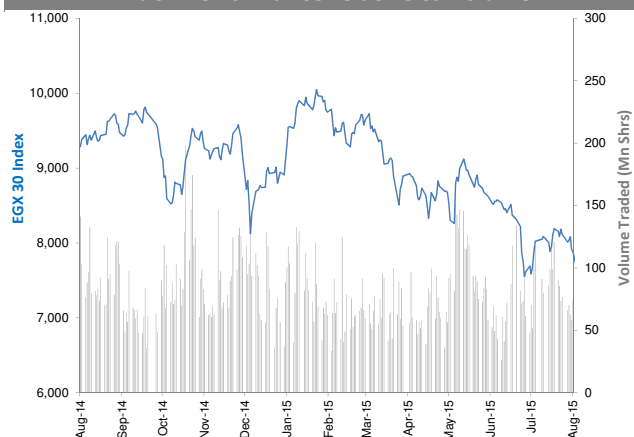
YTD-15 Return: Is a total return which accounts in addition to the change in price the cash & share dividends announced during the year.

The Egyptian Exchange Daily Report

(The bulletin covers the top 60 companies by Mkt. Cap out of 336 listed companies)

August 17, 2015

Index Performance relative to Volume



Sectors' Return & Valuation Multiples

	Market Cap. (EGP Mn)	MTD % Chg	P/E (X)	P/BV (X)	Yield (%)
The Egyptian Exchange	321,748	(5.7%)	16.0	1.3	2.4%
Banking & Finance	74,048	(5.5%)	9.6	2.1	2.1%
Basic Resources	14,009	(1.2%)	NM	1.5	4.1%
Chemical	20,588	(2.9%)	8.2	3.0	4.3%
Construction & Material	77,165	(6.6%)	16.5	0.7	3.2%
Financial Services	17,827	(9.9%)	34.8	0.8	1.8%
Food & Beverage	7,266	(3.4%)	20.1	2.0	3.3%
Healthcare & Pharma.	6,823	5.8%	21.3	3.5	0.0%
Ind. Goods, Services, Auto.	12,244	(5.9%)	20.0	1.5	1.8%
Media	531	4.5%	16.9	0.3	0.0%
Oil & Gas	3,048	(6.8%)	4.2	1.1	19.8%
Personal & Household	17,295	0.7%	14.4	1.5	0.0%
Real Estate	31,716	(11.2%)	18.7	0.9	0.9%
Telecommunication	35,102	(6.7%)	30.0	1.3	2.7%
Travel & Leisure	4,087	(3.3%)	21.8	1.1	0.0%

Sectors' MTD Return is based on the Change in market cap. and it might not conform with the benchmark return for each sector

Top 10 Stocks by Market Capitalization

	Market Cap. (EGP Mn)	P/E (X)	ROE* (%)
1-Orascom Construction Industries (OCI)	59,382	NM	NM
2-Commercial Int'l Bank (Egypt)	47,216	12.6	25.4%
3-Qatar National Bank AlAhli	16,344	7.0	19.5%
4-T M G Holding	15,374	22.5	2.6%
5-ABU Qir Fertilizers & Chemical ind. Co.	13,477	9.5	42.5%
6-Global Telecom Hldg.	11,960	NM	NM
7-EASTERN CO	11,150	12.3	18.8%
8-MobiNil	10,100	NM	NM
9-Elswedy Cables	10,054	24.9	7.6%
10-Egyptian International Pharmaceutical	6,823	21.3	16.6%
Subtotal	142,497	15.96	11.4%

*: ROE is based on Net Profit for the Period FY-14 & Shareholders' Equity as of 31-December-14

Today's Top Movers and Most Active Stocks

Best Return Performers	Last Price (EGP)	Daily Return
Aluminium Co. of Egypt	13.85	5.3%
Egyptian Resorts Co.	1.05	2.9%
Al Ezz Dekheila Steel Co. Alexandria	380.00	1.1%

Worst Return Performers	Last Price (EGP)	Daily Return
Palm Hills Developments	2.23	(8.2%)
T M G Holding	7.45	(6.3%)
Canal Shipping Agencies Co.	8.10	(6.0%)
Alexandria Mineral Oils Co.	35.40	(5.9%)
Alexandria Spinning & Weaving (SPINALEX)	0.86	(5.5%)

Most Active Stocks By Volume	Last Price (EGP)	Volume ('000 Shrs)
Amer Group Holding	0.96	37,993
Egyptian Resorts Co.	1.05	16,562
Palm Hills Developments	2.23	10,412
Citadel Capital	1.78	5,799
Global Telecom Hldg. (Orascom Telecom)	2.28	2,980

Source: KAMCO Research

Market Return, Volatility & Trading Indicators

Market Return	Closing Value	DTD Chg	DTD % Chg	MTD % Chg	YTD-15 % Chg
EGX 30 Index	7,625.76	(254.06)	(3.2%)	(6.9%)	(14.6%)
Market Cap (EGP Mn)	321,748	(8,087)	(3.0%)	(5.7%)	(18.6%)

Benchmark Volatility**	Since Jan-14	Since Jan-13	Since Jan-12	Since Jan-11	Since Jan-10
EGX 30 Index	21%	21%	24%	25%	26%

**: Annualized Standard Deviation of Daily Returns

Trading Indicators	Today's Value	DTD Chg	DTD % Chg	Average Daily YTD-15	YTD-14
Volume (Mn Shares)	92	17.96	24.4%	77	130
Value Traded (EGP Mn)	224	(107.8)	(32.5%)	369	561
No. of Trades	9,414	(382)	(3.9%)	11,573	16,279

Market Breadth	▲	3	▼	51	=	6
----------------	---	---	---	----	---	---

YTD-2015 Top Movers and Most Active Stocks

YTD-15 Best Return Performers	Last Price (EGP)	Volume ('000 Shrs)	YTD-15 Return
Misr Cement Co.	85.00	8,146	19.0%
Credit Agricole Egypt	23.51	24,304	18.9%
El Kahera Housing	11.32	17,850	9.8%
Egyptian Int'l Pharmaceutical	86.00	2,733	9.6%
Elswedy Cables	45.00	24,837	8.4%

YTD-15 Worst Return Performers	Last Price (EGP)	Volume ('000 Shrs)	YTD-15 Return
GB AUTO S.A.E	3.28	32,091	(89.4%)
Orascom Hotels & Development	9.51	16,818	(51.1%)
Palm Hills Developments	2.23	1,024,682	(45.7%)
Asec Company for Mining - Ascom	6.76	4,376	(42.7%)
Global Telecom Hldg. (Orascom Telecom)	2.28	1,071,561	(42.6%)

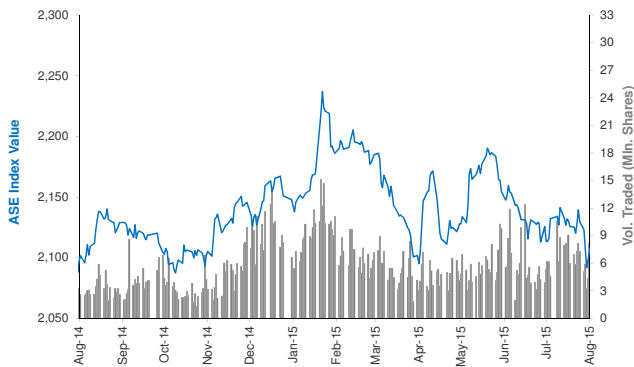
YTD-15 Most Active Stocks by Volume	Last Price (EGP)	Volume ('000 Shrs)	YTD-15 Return
Amer Group Holding	0.96	3,538,117	(25.00%)
Citadel Capital	1.78	1,551,815	(37.98%)
Global Telecom Hldg. (Orascom Telecom)	2.28	1,071,561	(42.57%)
Palm Hills Developments	2.23	1,024,682	(45.74%)
Egyptian Resorts Co.	1.05	982,649	(13.93%)

YTD-15 Return: Is a total return which accounts in addition to the change in price the cash & share dividends announced during the year.

Amman Stock Exchange Daily Report (1st Market)

August 17, 2015

Index Performance relative to Volume



Sectors' Return & Valuation Multiples

	Market Cap. (JD Mn)	MTD % Chg	P/E (X)	P/BV (X)	Yield (%)
Amman Stock Exchange	13,510	1.1%	12.5	0.9	5.3%
Banks	9,597	0.0%	9.2	0.8	5.0%
Insurance	96	0.3%	NM	0.8	3.3%
Diversified Financial Services	198	1.7%	NM	0.5	1.1%
Real Estate	282	1.7%	NM	0.7	0.2%
Educational Services	315	(0.4%)	11.9	1.9	14.8%
Hotels and Tourism	136	0.6%	23.3	0.6	55.4%
Transportation	99	(0.5%)	NM	1.6	2.2%
Technology & Commun.	703	(6.6%)	17.6	1.9	6.0%
Media	13	(3.0%)	NM	0.3	0.0%
Utilities & Energy	613	(1.8%)	14.8	2.4	3.6%
Pharmaceutical & Medical Ind.	108	5.7%	NM	0.7	2.9%
Tobacco & Cigarettes	345	0.9%	13.1	3.4	5.8%
Mining & Extraction Industries	594	0.6%	31.3	0.6	0.2%
Engineering & Construction	94	(4.1%)	29.2	1.3	3.6%
Textiles , Leather & Cloth.	78	(2.3%)	19.2	0.9	5.7%

Sectors' MTD Return is based on the Change in market cap. and it might not conform with the benchmark return for each sector

Top 10 Stocks by Market Capitalization

	Market Cap. (JD Mn)	P/E (X)	ROE* (%)
1-ARAB BANK	4,133	7.2	7.4%
2-HOUSING BK TRD FIN	2,344	19.5	12.2%
3-JORDAN TELECOM	688	16.4	11.9%
4-JOR ISLAMIC BANK	552	12.2	16.0%
5-JOR PHOSPHATE MN	450	22.8	2.6%
6-JOR KUWAIT BANK	397	7.9	11.5%
7-BANK OF JORDAN	382	8.1	14.0%
8-CAIRO AMMAN BANK	368	8.3	15.3%
9-JOR PETROLM REF	353	10.9	22.1%
10-EQBAL INV.CO	282	10.7	39.1%

Subtotal	9,947	9.94	8.8%
-----------------	--------------	-------------	-------------

* ROE is based on FY-2014 Net Profit & Shareholders' Equity as of 31-December-14

Today's Top Movers and Most Active Stocks

Best Return Performers	Price (JD)	Daily Return
ARAB BANK \$USD	6.45	7.5%
READY MIX CONCRETE & CONSTRUCTION SUPPLIES	2.60	6.1%
M. E PHARMA. & CHMICAL IND. & MEDICAL APPLIANCE	1.34	4.7%
JORDAN VEGETABLE OIL INDUSTRIES	1.25	4.2%
INTERNATIONAL FOR MEDICAL INVESTMENT	1.84	4.0%

Worst Return Performers	Price (JD)	Daily Return
ARAB ALUMINIUM INDUSTRY /ARAL	1.96	(5.3%)
JORDAN DUBAI PROPERTIES	0.39	(4.9%)
JORDAN DAIRY	7.60	(4.5%)
SPECIALIZED INVESTMENT COMPOUNDS	0.48	(4.0%)
AL-TAJAMOAT FOR CATERING AND HOUSING CO.	0.52	(3.7%)

Most Active Stocks By Volume	Price (JD)	Volume ('000 Shrs)
AL-AMAL FINANCIAL INVESTMENTS CO.	1.64	3,075
AD-DULAYL INDUSTRIAL PARK & REAL ESTATE CO.	2.20	2,953
JORDAN INDUSTRIAL RESOURCES	0.26	477
JORDAN DUBAI PROPERTIES	0.39	410
CENTURY INVESTMENT GROUP	2.29	274

Source: KAMCO Research

Market Return, Volatility & Trading Indicators

Market Return	Closing Value	DTD Chg	DTD % Chg	MTD % Chg	YTD-15 % Chg
ASE Index	2,118.76	12.74	0.6%	(0.3%)	(2.2%)
Market Cap (JD Mn)	13,510.12	289.50	2.2%	1.1%	(2.8%)

Benchmark Volatility**	Since Jan-2014	Since Jan-2013	Since Jan-2012
ASE Index	7.3%	7.8%	7.5%

** Annualized Standard Deviation of Daily Returns

Trading Indicators	Today's Value	DTD Chg	DTD % Chg	Average Daily YTD-15	YTD-14
Volume ('000 Shares)	8,550	307	3.7%	6,586	4,954
Value Traded (JD '000)	14,876	1,786	13.6%	7,570	6,302
No. of Trades	3,009	304	11.2%	2,395	2,296

Market Breadth	▲ 19 ▼ 31 = 69
-----------------------	-----------------------

YTD-2015 Top Movers and Most Active Stocks

YTD-15 Best Return Performers	Price (JD)	Volume ('000 Shrs)	YTD-15 Return
JORDAN DAIRY	7.60	94.6	276.2%
AD-DULAYL INDUSTRIAL PARK & REAL ESTATE CO.	2.20	266,775.8	168.3%
REAL ESTATE DEVELOPMENT	0.39	42,430.5	116.7%
AL-AMAL FINANCIAL INVESTMENTS CO.	1.64	60,209.5	88.5%
JORDAN LOAN GUARANTEE CORP.	0.90	5,775.2	69.8%

YTD-15 Worst Return Performers	Price (JD)	Volume ('000 Shrs)	YTD-15 Return
AL-TAJAMOAT FOR CATERING AND HOUSING CO.	0.52	83,366.7	(59.4%)
JORDAN INDUSTRIAL RESOURCES	0.26	75,265.2	(46.9%)
JORDAN PRESS FOUNDATION/AL-RA'I	1.15	340.5	(43.1%)
TRANSPORT& INVESTMENT BARTER CO.	0.43	90,106.7	(41.1%)
JORDAN DUBAI PROPERTIES	0.39	3,284.5	(40.9%)

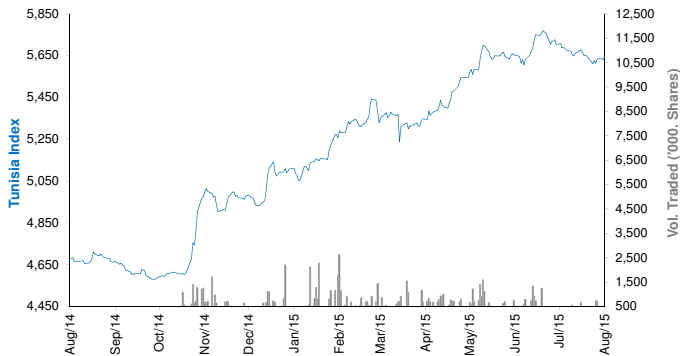
YTD-15 Most Active Stocks by Volume	Price (JD)	Volume ('000 Shrs)	YTD-15 Return
AD-DULAYL INDUSTRIAL PARK & REAL ESTATE CO.	2.20	266,776	168.3%
TRANSPORT& INVESTMENT BARTER CO.	0.43	90,107	(41.1%)
SPECIALIZED INVESTMENT COMPOUNDS	0.48	86,495	(17.2%)
AL-TAJAMOAT FOR CATERING AND HOUSING CO.	0.52	83,367	(59.4%)
JORDAN INDUSTRIAL RESOURCES	0.26	75,265	(46.9%)

YTD-15 Return: Is a total return which accounts in addition to the change in price the cash & share dividends announced during the year.

Tunisia Stock Exchange Daily Report

August 17, 2015

Index Performance relative to Volume



Sectors' Return & Valuation Multiples

	Market Cap. (DT Mn)	MTD % Chg	P/E (X)	P/B (X)	Yield (%)
Tunis Stock Exchange	16,605	(1.2%)	13.66	1.47	2.7%
Banking	6,750	(1.4%)	16.48	1.51	3.2%
Insurance	804	(0.4%)	19.13	1.69	2.1%
Leasing	512	(0.3%)	11.63	1.26	4.2%
Financial Services	1,451	1.3%	16.02	2.21	1.1%
Industrial	1,178	1.8%	2.51	0.38	2.3%
Chemical Industry	596	(4.1%)	15.34	1.78	4.1%
Food & Beverage	3,098	(3.2%)	20.48	4.24	3.0%
Retailing	1,357	(1.8%)	NM	3.71	0.3%
Others	859	1.8%	NM	1.15	3.5%

Sectors' MTD Return is based on the Change in market cap. and it might not conform with the benchmark return for each sector

Top 10 Stocks by Market Capitalization

	Market Cap. (DT Mn)	P/E (X)	ROE* (%)
1-Société Frigorifique et Brasserie de Tunis	2,182	17.02	22.3%
2-Banque de Tunisie	1,564	17.84	14.0%
3-Banque Internationale Arabe de Tunisie	1,384	11.86	17.0%
4-Banque Attijari De Tunisie	994	13.35	17.7%
5-Poulina Group Holding	990	13.67	12.5%
6-Delice Holding	850	32.91	20.2%
7-Amen Bank	660	7.30	13.2%
8-Union Bancaire pour le Commerce et	510	17.55	9.9%
9-Banque Nationale Agricole	467	24.95	3.2%
10-Arab Tunisian Bank	465	8.42	10.6%

Subtotal 10,065 14.41 13.7%

*: ROE is based on Net Profit for the Period FY-14 & Shareholders' Equity as of 31-December-14

Today's Top Movers and Most Active Stocks

Best Return Performers	Price (DT)	Daily Return
Poulina Group Holding	5.50	2.8%
TelNet Holding	4.49	2.5%
Tunisie Leasing	21.14	2.1%
SOTIPAPIER	4.79	1.9%
Société Générale Industrielle de Filtration	3.12	1.6%

Worst Return Performers	Price (DT)	Daily Return
Industries Chimiques du Fluor	26.20	(3.6%)
Banque de l'Habitat	14.00	(3.2%)
Société Immobilière Tuniso-Séoudienne	2.32	(2.9%)
Société Tunisienne d'Equipeement	5.01	(2.9%)
L'Accumulateur Tunisien ASSAD	6.79	(2.9%)

Most Active Stocks By Volume	Price (DT)	Volume (Shares)
Société Moderne de Céramique	2.92	45,850
Union Internationale de Banques	16.20	31,749
TelNet Holding	4.49	30,793
Société Générale Industrielle de Filtration	3.12	28,573
SOTIPAPIER	4.79	16,466

Source: KAMCO Research

Market Return, Volatility & Trading Indicators

Market Return	Closing Value	DTD Chg	DTD % Chg	MTD % Chg	YTD-15 % Chg
Tunisia Index	5,571.05	(20.50)	(0.4%)	(1.1%)	9.5%
Market Cap (DT Mln)	16,605	(48.81)	(0.3%)	(1.2%)	2.5%

Benchmark Volatility	Since Jan-14	Since Jan-13	Since Jan-12
Tunisia Index	6.7%	6.9%	6.9%

Trading Indicators	Today's Value	DTD Chg	DTD % Chg	Average Daily YTD-15	YTD-14
Volume ('000 Shares)	267	43.4	19.4%	635	782
Value Traded ('000 DT)	1,916	365	23.5%	5,752	5,082
No. of Trades	855	78	10%	1,417	1,449

Market Breadth	▲ 11	▼ 24	= 29
----------------	------	------	------

YTD-2015 Top Movers and Most Active Stocks

YTD-15 Best Return Performers	Price (DT)	Volume ('000 Shrs)	YTD-15 Return
Banque Nationale Agricole	14.59	7,368.2	92.0%
Euro-Cycles	26.99	1,343.2	66.4%
Société de Placement et de Dévelop. Ind. et Touristique	14.50	238.9	57.8%
Banque de l'Habitat	14.00	2,347.1	36.6%
Société Tunisienne d'Assurances et de Réassurances	177.50	100.5	22.2%

YTD-15 Worst Return Performers	Price (DT)	Volume ('000 Shrs)	YTD-15 Return
Société Tunisienne d'Equipeement	5.01	0.758	(51.9%)
Société Tunis. d'Entreprises de Télécom.	1.76	732.1	(49.0%)
Société Nouvelle Maison de la Ville de Tunis	13.70	591.6	(37.7%)
Industries Chimiques du Fluor	26.20	10.0	(31.0%)
Electrostar	5.00	2,495.3	(27.4%)

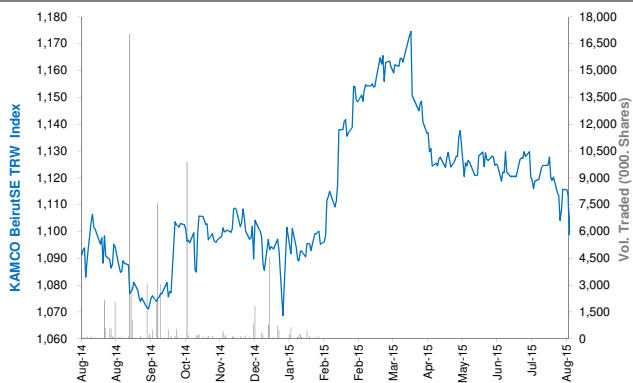
YTD-15 Most Active Stocks by Volume	Price (DT)	Volume ('000 Shrs)	YTD-15 Return
Société Moderne de Céramique	2.92	15,827.8	16.3%
Banque Nationale Agricole	14.59	7,368.2	92.0%
Société Frigorifique et Brasserie de Tunis	24.24	7,360.5	7.7%
Société d'Articles Hygiéniques	10.93	6,786.8	17.4%
TUNISAIR	0.87	4,338.5	(23.0%)

YTD-15 Return: Is a total return which accounts in addition to the change in price the cash & share dividends announced during the year.

Beirut Stock Exchange Daily Report

August 17, 2015

Index Performance relative to Volume



Sectors' Return & Valuation Multiples

	Market Cap. (USD Mn)	MTD % Chg	P/E (X)	P/B (X)	Yield (%)
Beirut Stock Exchange	11,390	(0.4%)	1.22	0.11	2.6%
Banking	9,198	(0.7%)	5.16	0.56	2.9%
Industrial	325	0.4%	6.12	0.89	8.5%
Trading	35	0.0%	0.01	0.00	0.0%
Real Estate & Construction	1,851	0.8%	10.13	1.00	0.0%

Sectors' MTD Return is based on the Change in market cap. and it might not conform with the benchmark return for each sector

Market Breadth

▲	1	▼	2	=	27
---	---	---	---	---	----

Top 10 Stocks by Market Capitalization

	Market Cap. (USD Mn)	P/E (X)	ROE* (%)
1- Bank Audi	2,379	5.99	10.3%
2- BLOM Bank	2,064	5.63	14.4%
3- Solidere A	1,111	6.08	9.8%
4- Byblos Bank	922	5.51	6.7%
5- Solidere B	740	4.05	9.8%
6- BLOM Bank GDR	739	-	-
7- Bank Audi GDR	699	-	-
8- Bank Of Beirut	310	2.86	11.2%
9- Holcim Liban	295	6.18	14.1%
10- Byblos Bank Preferred 2009	204	-	-
Subtotal	9,461	5.11	10.7%

*: ROE is based on Net Profit for the Period FY-14 & Shareholders' Equity as of 31-December-14

Market Return, Volatility & Trading Indicators

Market Return	Closing Value	DTD Chg	DTD % Chg	MTD % Chg	YTD-15 % Chg
KAMCO BeirutSE TRW Index	1,110.85	(1.90)	(0.2%)	(0.4%)	1.7%
Market Cap (USD Mn)	11,390.000	(19.49)	(0.2%)	(0.4%)	1.5%
Benchmark Volatility	Since Jan-14	Since Jan-13			Since Jan-12
KAMCO BeirutSE TRW Index	7.7%	7.4%			7.1%
Trading Indicators	Today's Value	DTD Chg	DTD % Chg	Average Daily YTD-15	YTD-14
Volume ('000s shares)	7.95	(26)	(76.9%)	331	662
Value Traded ('000s USD)	162.86	(168)	(50.7%)	2,658	2,878

Today's Top Movers and Most Active Stocks

Best Return Performers	Price (USD)	Daily Return
Solidere B	11.39	0.9%

Worst Return Performers	Price (USD)	Daily Return
Bank Audi	5.95	(0.8%)
Solidere A	11.11	(0.5%)

Most Active Stocks by Volume	Price (USD)	Volume (Shares)
Bank Audi	5.95	3,000
Solidere A	11.11	2,903
Solidere B	11.39	1,044
Byblos Bank Preferred 2008	101.10	1,000

Source: KAMCO Research

YTD-2015 Top Movers and Most Active Stocks

YTD Best Return Performers	Price (USD)	YTD Volume (Shares)	YTD-15 Return
Ciments Blancs N	3.10	574	12.7%
BLOM Bank	9.60	5,779,527	9.1%
BEMO Bank	1.90	215,084	8.6%
Bank of Beirut Preferred Class J	25.75	48,525	3.0%
BLOM Bank GDR	10.00	809,902	2.0%

YTD Worst Return Performers	Price (USD)	YTD Volume (Shares)	YTD-15 Return
Bank Audi GDR	6.010	7,051,219	(8.2%)
Ciments Blancs B	3.500	12,450	(6.7%)
Bank of Beirut Preferred Class E	25.500	89,831	(2.9%)
Bank of Beirut Preferred Class H	25.600	163,752	(2.5%)
Solidere A	11.11	3,300,138	(1.9%)

YTD Most Active Stocks by Volume	Price (USD)	YTD Volume (Shares)	YTD-15 Return
Bank Audi	5.95	20,997,095	(0.8%)
Byblos Bank	1.63	7,062,374	1.9%
Bank Audi GDR	6.01	7,051,219	(8.2%)
BLOM Bank	9.60	5,779,527	9.1%
Solidere A	11.11	3,300,138	(1.9%)

YTD-15 Return: Is a total return which accounts in addition to the change in price the cash & share dividends announced during the year.

Casablanca Stock Exchange Daily Report

(The Bulletin covers the 41 Stocks listed on the Main Market)

August 17, 2015

Index Performance relative to Volume



Market Breadth

▲ 11 ▼ 11 = 19

Top 10 Stocks by Market Capitalization

	Market Cap. (MAD Mn)	P/E (X)	ROE* (%)
1-Itissalat Al-Maghrib	101,228	17.3	36.8%
2-Attijariwafa Bank	70,435	16.2	12.3%
3-Banque Marocaine Du Commerce Exterieur	39,482	20.3	12.1%
4-Banque Centrale Populaire	38,758	17.7	6.9%
5-Ciments Du Maroc	18,752	23.4	12.7%
6-Wafa Assurances	13,475	17.3	19.9%
7-CIE Generale Immobiliere	10,677	NM	1.8%
8-Holcim Maroc	9,683	16.0	30.7%
9-Douja Prom Addoha	9,135	9.0	9.1%
10-Banque Marocaine Due Commerce Et De L'Industries	8,749	24.0	4.3%
Subtotal	320,374	17.82	13.3%

*: ROE is based on Net Profit for the period FY-14 and Shareholders' equity as of 31-December-14

Today's Top Movers and Most Active Stocks

Best Return Performers	Price (MAD)	Daily Return
Med Paper	17.51	6.0%
Fenie Brossette	127.85	4.8%
Alliances Developpement Immobilier	53.00	4.3%
Societe Nationale de Siderurgie	700.00	3.7%
Risma	184.00	0.4%

Worst Return Performers	Price (MAD)	Daily Return
Banque Centrale Populaire	223.85	(2.4%)
Delta Holding	26.99	(2.2%)
Miniere Touissit	1,146.00	(1.7%)
Lafarge Ciments	1,870.00	(1.6%)
Banque Marocaine Du Commerce Exterieur	220.00	(1.1%)

Most Active Stocks By Volume	Price (MAD)	Volume (Shrs)
Itissalat Al-Maghrib	115.15	177,818
Douja Prom Addoha	29.00	81,722
Attijariwafa Bank	350.00	43,526
Banque Marocaine Du Commerce Exterieur	220.00	31,634
Banque Centrale Populaire	223.85	8,350

Source: KAMCO Research

Sectors' Return & Valuation Multiples

	Market Cap. (MAD Mn)	MTD % Chg	P/E (X)	P/B (X)	Yield (%)
Casablanca Stock Exchange	428,682	(0.8%)	21.7	2.0	3.3%
Banking	170,477	(0.2%)	17.8	1.7	2.7%
Beverages	1,782	(2.2%)	17.0	3.2	0.0%
Chemicals	266	(11.7%)	NM	0.6	0.0%
Construction & Bldg. Material	63,833	(1.8%)	22.8	4.1	2.1%
Distributors	9,279	0.1%	24.7	2.4	0.0%
Electrical & Electronic Equipment	319	(14.4%)	NM	0.0	0.0%
Electricity	1,221	(2.2%)	1.5	0.3	0.0%
Food Producers & Processors	3,700	0.2%	4.4	0.7	15.6%
Holding Companies	2,364	(2.9%)	15.2	2.0	4.8%
Insurance	21,423	0.6%	16.5	2.6	5.0%
Investment & other Finance	3,410	(3.6%)	13.7	1.6	3.0%
Leisures & Hotel	1,450	(3.2%)	NM	1.6	0.0%
Materials, Software & Computer	722	(3.2%)	9.9	0.6	3.9%
Mining	14,231	0.3%	23.8	2.5	2.3%
Oil & Gas	8,396	(1.7%)	NM	0.9	0.0%
Real Estate	20,473	0.2%	25.8	1.2	0.0%
Telecommunications	101,228	(1.7%)	17.3	6.4	6.0%
Transport	558	2.2%	14.3	2.0	0.0%
Utilities	3,504	0.0%	12.4	2.0	0.0%
Forestry & Paper	45	9.4%	NM	2.2	0.0%

Sectors' MTD Return is based on the Change in market cap. and it might not conform with the benchmark return for each sector

Market Return, Volatility & Trading Indicators

Market Return	Closing Value	DTD Chg	DTD % Chg	MTD % Chg	YTD-15 % Chg
MASI Index	9,653.11	(42.3)	(0.4%)	(0.9%)	0.3%
MADEX Index	7,911.88	(37.3)	(0.5%)	(0.9%)	0.9%
Market Cap (MAD Mn)	428,682	(2.1)	(0.5%)	(0.8%)	(0.7%)

Benchmark Volatility**	YTD-14	Since Jan-13	Since Jan-12	Since Jan-11	Since Jan-10
MASI Index	7.9%	8.3%	8.7%	9.7%	9.8%
MADEX Index	9.4%	8.3%	8.7%	9.1%	10.1%

**: Annualized Standard Deviation of Daily Returns

Trading Indicators	Today's Value	DTD Chg	DTD % Chg	Average Daily YTD-15	YTD-14
Volume ('000 Shares)	365.64	292.01	396.6%	610	516
Value Traded (MAD Mn)	25.50	14.71	136.3%	47	70

YTD-2015 Top Movers and Most Active Stocks

YTD Best Return Performers	Price (MAD)	Volume (Shrs)	YTD-15 Return
Compagnie de Transport au Maroc	455.00	35,661	40.0%
Ciments Du Maroc	1,299.00	276,852	38.2%
Hightech Payment Systems SA	480.00	28,647	29.0%
TAQA MOROCCO	546.30	591,989	28.5%
Holcim Maroc	2,300.00	153,555	20.8%

YTD Worst Return Performers	Price (MAD)	Volume (Shrs)	YTD-15 Return
Alliances Developpement Immobilier	53.00	2,399,967	(80.9%)
Marocaine de l Industrie du Raffinage	127.80	431,324	(47.0%)
Societe Nationale d'Electrolyse et de Petrochimie	111.00	84,475	(46.4%)
Med Paper	17.51	507,354	(37.1%)
Fenie Brossette	127.85	21,422	(33.8%)

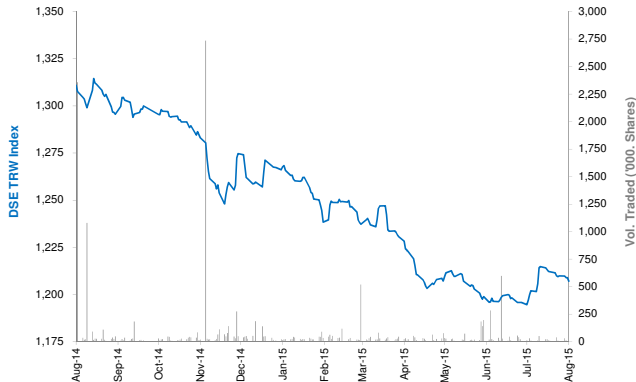
YTD Most Active Stocks by Volume	Price (MAD)	Volume ('000 Shrs)	YTD-15 Return
Douja Prom Addoha	29.00	34,700	(22.9%)
Itissalat Al-Maghrib	115.15	18,314	1.2%
Attijariwafa Bank	350.00	9,176	1.7%
Comp Suc Maroc Et De Raff	173.65	6,973	4.0%
Banque Marocaine Du Commerce Exterieur	220.00	6,420	0.0%

YTD-15 Return: accounts in addition to the chg in price the cash & share dividends announced during the year.

Damascus Securities Exchange Daily Report

August 17, 2015

Index Performance relative to Volume



Sectors' Return & Valuation Multiples

	Market Cap. (SRY Mn)	MTD % Chg	P/E (X)	P/B (X)	Yield (%)
Damascus SE	124,974	(0.4%)	4.9	0.9	0.3%
Banking	111,081	(0.4%)	4.70	0.84	0.0%
Services	1,470	0.0%	26.68	2.67	2.0%
Industrial	3,926	0.0%	6.62	1.58	0.0%
Insurance	7,958	(0.4%)	7.09	0.89	4.7%
Agricultural	539	0.0%	NM	3.81	0.0%

Sectors' MTD Return is based on the Change in market cap. and it might not conform with the benchmark return for each sector

Market Breadth

▲	1	▼	3	=	20
---	---	---	---	---	----

Top 10 Stocks by Market Capitalization

	Market Cap. (SRY Mn)	Trailing P/E (X)	ROE* (%)
1- Banque Bemo Saudi Fransi	16,950	7.3	20.6%
2- Qatar National Bank - Syria	14,550	1.7	23.5%
3- Bank Audi Syria	13,238	4.5	29.1%
4- Bank Of Syria And Overseas	9,400	4.7	25.7%
5- Arab Bank- Syria	9,301	NM	NM
6- The Int'l Bank For Trade & Finance	8,059	NM	0.1%
7- Syria International Islamic Bank	7,815	NM	NM
8- Byblos Bank Syria	7,650	7.0	13.7%
9- Al Baraka Bank - Syria	5,605	2.2	24.0%
10- Cham Bank	4,500	2.1	21.4%
Subtotal	92,567	4.89	17.5%

* ROE is based on FY-2014 Net Profit & Shareholders' Equity as of 31-December-14

Today's Top Movers & Most Active Stocks

Best Return Performers	Price (SRY)	Daily Return
Al Baraka Bank - Syria	112.09	0.03%

Worst Return Performers	Price (SRY)	Daily Return
United Insurance Co.	173.50	(2.0%)
Qatar National Bank Syria	97.00	(0.8%)
Syria International Islamic Bank	91.95	(0.6%)

Most Active Stocks by Volume	Price (SRY)	Volume (Shrs)
Syria International Islamic Bank	91.95	8,321
United Insurance Co.	173.50	5,000
Qatar National Bank Syria	97.00	3,000
Al Baraka Bank - Syria	112.09	2,900
Alahliah Vegetable Oil Company E.S.A	261.75	1,910

Source: KAMCO Research

Market Return, Volatility & Trading Indicators

Market Return	Closing Value	DTD Chg.	DTD % Chg.	MTD % Chg.	YTD-15 % Chg.
DSE Weighted Index	1,207.09	(1.84)	(0.2%)	(0.4%)	(5.0%)
Market Cap (SRY Mn)	124,974	(190)	(0.2%)	(0.4%)	(5.6%)

Benchmark Volatility	Since Jan-14	Since Jan-13	Since Jan-12
DSE Weighted Index	4.7%	9.8%	8.9%

** Annualized Standard Deviation of Daily Returns

Trading Indicators	Today's Value	DTD Chg.	DTD % Chg.	Average Daily YTD-15	YTD-14
Volume (Shrs)	21,131	19,331	1,073.9%	39,444	25,351
Value Traded ('000 SRY)	2,749	2,449	816.2%	5,401	22,009
No. of Trades	10	7.0	233.3%	23	47

YTD-2015 Top Movers & Most Active Stocks

YTD Best Return Performers	Price (SRY)	YTD Vol. (Shrs)	YTD-15 Return
Alahliah Vegetable Oil Company E.S.A	261.75	57,871	19.0%
United Insurance Co.	173.50	40,840	11.9%
Bank Al Sharq	135.00	31,505	3.6%
Bank Of Syria And Overseas	235.00	224,065	2.6%
Arab Bank- Syria	184.18	106,419	1.2%

YTD Worst Return Performers	Price (SRY)	YTD Vol. (Shrs)	YTD-15 Return
Qatar National Bank Syria	97.00	858,561	(19.0%)
National Insurance Company	118.25	170,750	(17.5%)
Syria International Islamic Bank	91.95	1,010,396	(16.2%)
Cham Bank	90.00	245,857	(13.7%)
Al Baraka Bank - Syria	112.09	989,139	(10.9%)

YTD Most Active Stocks by Volume	Price (SRY)	YTD Vol. (Shrs)	YTD-15 Return
Syria International Islamic Bank	91.95	1,010,396	(16.2%)
Al Baraka Bank - Syria	112.09	989,139	(10.9%)
Qatar National Bank Syria	97.00	858,561	(19.0%)
Bank Audi Syria	231.25	574,966	0.0%
Cham Bank	90.00	245,857	(13.7%)

YTD-15 Return: Is a total return which accounts in addition to the change in price the cash & share dividends announced during the year.

Disclaimer & Important Disclosures

KAMCO is authorized and fully regulated by the Capital Markets Authority ("CMA") and partially regulated by the Central Bank of Kuwait ("CBK")

This document is provided for informational purposes only. Nothing contained in this document constitutes investment, an offer to invest, legal, tax or other advice or guidance and should be disregarded when considering or making investment decisions. In preparing this document, KAMCO did not take into account the investment objectives, financial situation and particular needs of any particular person. Accordingly, before acting on this document, investors should independently evaluate the investments and strategies referred to herein and make their own determination of whether it is appropriate in light of their own financial circumstances and objectives. The entire content of this document is subject to copyright with all rights reserved. This research and the information contained herein may not be reproduced, distributed or transmitted in Kuwait or in any other jurisdiction to any other person or incorporated in any way into another document or other material without our prior written consent.

Analyst Certification

Each of the analysts identified in this report certifies, with respect to the sector, companies or securities that the individual analyses, that (1) the views expressed in this report reflect his or her personal views about all of the subject companies and securities and (2) no part of his or her compensation was, is or will be directly or indirectly dependent on the specific recommendations or views expressed in this report.

KAMCO Ratings

KAMCO investment research is based on the analysis of regional and country economics, industries and company fundamentals. KAMCO company research reflects a long-term (12-month) target price for a company or stock. The ratings bands are:

- * **Outperform:** Target Price represents expected returns $\geq 10\%$ in the next 12 months
- * **Neutral:** Target Price represents expected returns between -10% and $+10\%$ in the next 12 months
- * **Underperform:** Target Price represents an expected return of $<-10\%$ in the next 12 months

In certain circumstances, ratings may differ from those implied by a fair value target using the criteria above. KAMCO policy is to maintain up-to-date fair value targets on the companies under its coverage, reflecting any material changes to the analyst's outlook on a company. Share price volatility may cause a stock to move outside the rating range implied by KAMCO's fair value target. Analysts may not necessarily change their ratings if this happens, but are expected to disclose the rationale behind their view to KAMCO clients.

Any terms and conditions proposed by you which are in addition to or which conflict with this Disclaimer are expressly rejected by KAMCO and shall be of no force or effect. The information contained in this document is based on current trade, statistical and other public information we consider reliable. We do not represent or warrant that such information is fair, accurate or complete and it should not be relied upon as such. KAMCO has no obligation to update, modify or amend this document or to otherwise notify a recipient thereof in the event that any opinion, forecast or estimate set forth herein, changes or subsequently becomes inaccurate. The publication is provided for informational uses only and is not intended for trading purposes. The information on publications does not give rise to any legally binding obligation and/or agreement, including without limitation any obligation to update such information. You shall be responsible for conducting your own investigation and analysis of the information contained or referred to in this document and of evaluating the merits and risks involved in the securities forming the subject matter of this or other such document. Moreover, the provision of certain data/information in the publication may be subject to the terms and conditions of other agreements to which KAMCO is a party.

Nothing in this document should be construed as a solicitation or offer, or recommendation, to acquire or dispose of any investment or to engage in any other transaction, or to provide any investment advice or service. This document is directed at Professional Clients and not Retail Clients within the meaning of CMA rules. Any other persons in receipt of this document must not rely upon or otherwise act upon it. Entities and individuals into whose possession this document comes are required to inform themselves about, and observe such restrictions and should not rely upon or otherwise act upon this document where it is unlawful to make to such person such an offer or invitation or recommendation without compliance with any authorization, registration or other legal requirements.

Risk Warnings

Any prices, valuations or forecasts are indicative and are not intended to predict actual results, which may differ substantially from those reflected. The value of an investment may go up as well as down. The value of and income from any investment may fluctuate from day to day as a result of changes in relevant economic markets (including, without limitation, foreseeable or unforeseeable changes in interest rates, foreign exchange rates, default rates, prepayment rates, political or financial conditions, etc.).

Past performance is not indicative of future results. Any opinions, estimates, valuations or projections (target prices and ratings in particular) are inherently imprecise and a matter of judgment. They are statements of opinion and not of fact, based on current expectations, estimates and projections, and rely on beliefs and assumptions. Actual outcomes and returns may differ materially from what is expressed or forecasted. There are no guarantees of future performance. Certain transactions, including those involving futures, options, and other derivatives, give rise to substantial risk and are not suitable for all investors. This document does not propose to identify or to suggest all of the risks (direct or indirect) which may be associated with the investments and strategies referred to herein.

Conflict of Interest

KAMCO and its affiliates provide full investment banking services, and they and their directors, officers and employees, may take positions which conflict with the views expressed in this document. Salespeople, traders, and other professionals of KAMCO may provide oral or written market commentary or trading strategies to our clients and our proprietary trading desks that reflect opinions that are contrary to the opinions expressed in this document. Our asset management area, our proprietary trading desks and investing businesses may make investment decisions that are inconsistent with the recommendations or views expressed in this document. KAMCO may have or seek investment banking or other business relationships for which it will receive compensation from the companies that are the subject of this document. Facts and views presented in this document have not been reviewed by, and may not reflect information known to, professionals in other KAMCO business areas, including investment banking personnel. United Gulf Bank, Bahrain owns majority of KAMCO's shareholding and this ownership may create, or may create the appearance of, conflicts of interest.

No Liability & Warranty

KAMCO makes neither implied nor expressed representations or warranties and, to the fullest extent permitted by applicable law, we hereby expressly disclaim any and all express, implied and statutory representations and warranties of any kind, including, without limitation, any warranty as to accuracy, timeliness, completeness, and fitness for a particular purpose and/or non-infringement. KAMCO will accept no liability in any event including (without limitation) your reliance on the information contained in this document, any negligence for any damages or loss of any kind, including (without limitation) direct, indirect, incidental, special or consequential damages, expenses or losses arising out of, or in connection with your use or inability to use this document, or in connection with any error, omission, defect, computer virus or system failure, or loss of any profit, goodwill or reputation, even if expressly advised of the possibility of such loss or damages, arising out of or in connection with your use of this document. We do not exclude our duties or liabilities under binding applicable law.



KAMCO Investment Company – K.S.C (Public)

Al-Shaheed Tower, Khalid Bin Al-Waleed Street- Sharq

P.O. BOX : 28873, Safat 13149, State of Kuwait

Tel: (+965) 1852626 Fax: (+965) 22492395

Email : Kamcoird@kamconline.com