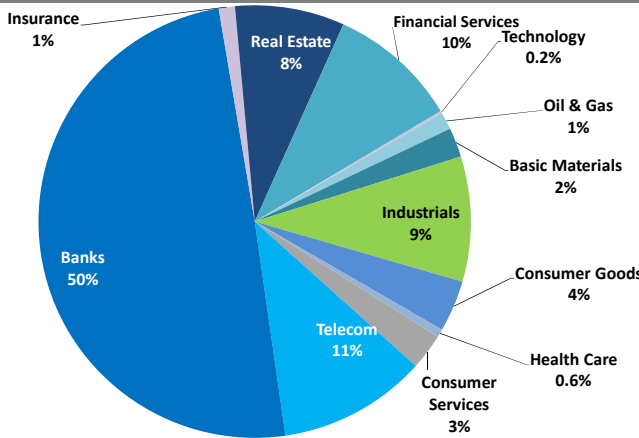


Kuwait Market Daily Report

Sector Weight by Market Cap



Top 10 Companies by Market Capitalization

Company Name	Market Cap. (Mn KWD)	P/E (X)	ROE* (%)
1- National Bank of Kuwait	4,334.2	16.6	10.4%
2- Kuwait Finance House	3,192.6	25.2	7.2%
3- Zain	2,074.3	10.7	12.0%
4- Ahli United Bank - Bahrain	1,374.1	10.0	13.9%
5- Kuwait Food Co. (Americana)	1,045.2	20.1	14.3%
6- Kuwait Projects Co.	957.8	20.8	8.9%
7- Burgan Bank	912.0	14.8	9.3%
8- Agility	911.8	17.9	5.7%
9- Boubyan Bank	887.2	31.4	9.5%
10- Commercial Bank of Kuwait	875.4	17.8	8.9%
Total	16,565	16.43	9.9%

*: ROE is calculated based on FY2014 net profit & shareholders' equity as of 31-December-14

Top Movers and Most Active Stocks

Today's Top % Gainers	Close (KWD)	Change (KWD)	Percent Change
National Petroleum Services Co.	0.590	0.050	9.3%
Arkan Al-Kuwait Real Estate Co.	0.120	0.010	9.1%
Kuwait Insurance Co.	0.320	0.025	8.5%
Bayan Investment Co.	0.054	0.004	8.0%
International Financial Advisers	0.041	0.003	6.6%

Today's Top % Losers	Close (KWD)	Change (KWD)	Percent Change
Gulf Finance House	0.062	(0.005)	(7.5%)
Kuwait Cable Vision	0.034	(0.003)	(6.9%)
Real Estate Trade Centers Co.	0.027	(0.002)	(6.9%)
Kuwait Financial Center	0.108	(0.008)	(6.9%)
Zima Holding Co.	0.074	(0.005)	(6.3%)

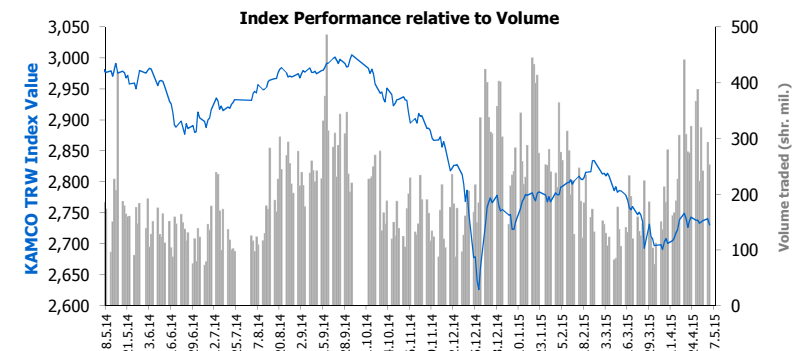
Today's Most Active by Volume	Close (KWD)	Change (KWD)	Volume (Shares)
Hits Telecom Holding Co.	0.034	(0.002)	45,161,398
Gulf Finance House	0.062	(0.005)	38,959,747
Al-Madina for Finance & Investment Co.	0.046	0.000	12,771,881
Investors Holding Group Co.	0.036	(0.001)	12,293,689
Al Dar National Real Estate Co.	0.025	(0.001)	9,574,385

Source: KAMCO Research

Market Capitalization - Sectors' Return

	Market Cap. (KWD Mn)	DTD	DTD % Chg	MTD % Chg	YTD % Chg
Kuwaiti Stock Exchange	29,308.1	▼	(0.5%)	(0.4%)	(1.3%)
Oil & Gas	375.8	▼	(0.9%)	(0.5%)	(3.9%)
Basic Materials	639.4	▲	0.2%	1.8%	(1.5%)
Industrials	2,742.2	▼	(0.1%)	(0.5%)	0.5%
Consumer Goods	1,131.0	▼	(0.0%)	(2.1%)	(7.1%)
Health Care	175.7	▲	0.6%	1.3%	(4.5%)
Consumer Services	784.4	▲	0.4%	(0.0%)	0.9%
Telecommunications	3,258.7	▼	(0.5%)	(0.6%)	(2.6%)
Banks	14,530.7	▼	(0.7%)	(0.3%)	(0.4%)
Insurance	355.5	▲	2.0%	2.0%	(0.4%)
Real Estate	2,399.7	▲	0.0%	0.1%	0.3%
Financial Services	2,860.3	▼	(1.3%)	(0.8%)	(5.1%)
Technology	54.7	▲	0.7%	0.7%	(2.8%)

Market Breadth	▲ 30	▼ 54	■ 107		
Benchmark Return	Closing Value	DTD Chg	DTD % Chg	MTD % Chg	YTD % Chg
KAMCO TRWI	2,730.48	(9.8)	(0.4%)	(0.3%)	(0.9%)
KSE Price Index	6,388.00	(1.5)	(0.0%)	0.2%	(2.3%)
KSE Weighted Index	433.37	(2.4)	(0.6%)	(0.4%)	(1.3%)
Kuwait 15 Index	1,051.86	(7.4)	(0.7%)	(0.7%)	(0.8%)
Market Cap (KWD Mn)	29,308	(158.1)	(0.5%)	(0.4%)	(1.3%)



Market Trading Data and Volatility

Trading Indicators	Today's Value	DTD Chg	DTD % Chg	Average Daily YTD 2015	Average Daily YTD 2014
Volume (Shrs Mn)	252.7	(40.6)	(13.9%)	220.9	268.8
Value Traded (KWD Mn)	19.4	(1.1)	(5.6%)	21.2	30.8
No. of Trades	4,938	(590.0)	(10.7%)	5,061	5,613

Market Volatility**	Volatility Since January:				
	2014	2013	2012	2011	2010
KAMCO TRW Index	7.0%	6.2%	6.0%	7.0%	7.7%
KSE Price Index	10.1%	10.9%	10.1%	9.8%	9.7%
KSE Weighted Index	10.2%	9.1%	8.8%	10.0%	10.7%

** Annualized Standard Deviation of Daily Returns

Today's Most Active by Value	Close (KWD)	Change (KWD)	Value (KWD)
Gulf Finance House	0.062	(0.005)	2,479,671
Hits Telecom Holding Co.	0.034	(0.002)	1,547,641
kuwait Telecommunication Co.	0.880	0.010	1,474,470
Kuwait Finance House	0.670	(0.010)	1,225,279
Kuwait Projects Co. (Holding)	0.650	(0.020)	869,678

KUWAIT 15 INDEX Data

Monday, May 4, 2015

Kuwait 15 Index Constituents	Closing Price			Market Capitalization			Valuation Multiples				ROE	YTD-15 Price Return	YTD-15 Trading Indicators	
	KWD	DTD Chg. (KWD)	D-T-D Return	KWD Mn	Weight in Kuwait 15	Weight in KSE	P/E (X)	P/BV (X)	Yield	Beta			Turnover (Mn Shrs)	Value (KWD Mn)
== National Bank of Kuwait	0.860	0.000	0.00%	4,334	25.2%	14.8%	16.6	1.73	3.3%	1.48	10.4%	2.6%	129.5	113.4
▼ Kuwait Finance House	0.670	(0.010)	(1.47%)	3,193	18.6%	10.9%	25.2	1.83	2.0%	1.51	7.2%	4.6%	152.5	112.4
▼ Zain	0.480	(0.005)	(1.03%)	2,074	12.1%	7.1%	10.7	1.28	7.5%	1.64	12.0%	(1.9%)	252.0	131.5
== Kuwait Food Co. (Americana)	2.600	0.000	0.00%	1,045	6.1%	3.6%	20.1	2.9	3.4%	0.82	14%	(3.9%)	7.7	21.0
▼ Kuwait Projects Co. (Holding)	0.650	(0.020)	(2.99%)	958	5.6%	3.3%	20.8	1.86	3.8%	1.57	8.9%	(7.1%)	83.9	55.9
▼ Burgan Bank	0.445	(0.005)	(1.11%)	912	5.3%	3.1%	14.8	1.38	3.1%	1.33	9.3%	0.7%	65.4	30.2
▼ Boubyan Bank	0.430	(0.005)	(1.15%)	887	5.2%	3.0%	31.4	3.00	0.0%	1.49	9.5%	11.3%	96.7	42.4
== Gulf Bank	0.280	0.000	0.00%	853	5.0%	2.9%	24.1	1.67	0.0%	0.90	6.9%	1.6%	60.8	17.5
== Agility (PWC Logistics)	0.790	0.000	0.00%	912	5.3%	3.1%	17.9	1.03	4.2%	1.93	5.7%	6.8%	81.1	63.2
== Mabane Co.	0.960	0.000	0.00%	816	4.7%	2.8%	16.9	3.10	1.4%	1.41	18.3%	16.6%	23.5	23.8
== Boubyan Petrochemicals	0.610	0.000	0.00%	311	1.8%	1.1%	11.0	1.16	6.9%	1.38	10.6%	(6.2%)	9.5	5.6
== Kuwait International Bank	0.255	0.000	0.00%	265	1.5%	0.9%	19.3	1.11	3.2%	1.47	5.8%	2.8%	32.2	8.3
== National Industries Group	0.188	0.000	0.00%	256	1.5%	0.9%	9.0	0.58	6.2%	1.99	6.4%	(1.1%)	65.6	12.6
▼ Warba Bank	0.228	(0.002)	(0.87%)	228	1.3%	0.8%	NM	2.48	0.0%	NA	0.1%	(3.4%)	145.3	33.3
== The Commercial Real Estate Co.	0.088	0.000	0.00%	157	0.9%	0.5%	8.3	0.59	6.5%	1.29	7.1%	2.5%	265.1	25.5
Subtotal- Kuwait 15 Index	1,051.86	(7.42)	-0.70%	17,200	100%	59%	17.3	1.61	3.29%		9.3%	-0.8%	1,471	697
Remaining of the Market				12,108		41%	17.1	0.97	3.76%		5.7%		17,101	1,087

Source: KAMCO Research

Kuwait Stock Exchange Daily Bulletin

Monday, May 4, 2015

Company	Reuters Ticker	Valuation Multiples				Price (KWD)			MKT Cap (KWD Mn.)	52 Weeks High (KWD)	52 Weeks Low (KWD)	YTD-15 Return #	Daily Trading Data		YTD-15 Capital Turnover	ROE
		Trailing P/E (X)	Trailing P/BV (X)	Dividend Yield	Beta	Closing	DTD Change	Volume (Shrs.)					Value (KWD)			
= Contracting & Marine Services Co.	MARI.KW	27.5	0.54	4.54%	0.57	0.110	0.000	25.2	0.178	0.095	(6.8%)	0	0	0.2%	2.0%	
▼ IKARUS Petroleum Industries Co.	IKAR.KW	11.5	0.81	6.72%	0.99	0.148	(0.002)	116.6	0.200	0.116	0.0%	120,349	17,812	1.1%	7.0%	
= Al-Safat Energy Holding Co.	SENE.KW	NM	0.57	0.00%	1.40	0.020	0.000	12.1	0.043	0.015	(14.9%)	9,010,115	182,687	96.6%	NM	
= Independent Petroleum Group	IPGK.KW	15.8	0.75	6.17%	0.66	0.385	0.000	58.6	0.480	0.365	(6.1%)	0	0	0.4%	4.8%	
▲ National Petroleum Services Co.	NAPS.KW	10.0	1.97	7.40%	0.38	0.590	0.050	34.0	0.630	0.540	11.4%	1	1	0.3%	19.7%	
▼ The Energy House Co.	ENER.KW	NM	1.11	0.00%	0.77	0.093	(0.005)	69.8	0.116	0.078	6.9%	1,141,750	106,842	4.5%	NM	
= Gulf Petroleum Investment	GPIK.KW	8.2	0.66	5.75%	1.14	0.087	0.000	31.2	0.114	0.066	6.1%	2,009,098	174,706	54.9%	8.0%	
▼ Burgan Co. for Drilling, Tdg. & Maint. *	ABAR.KW	61.0	0.53	0.00%	0.57	0.136	(0.004)	28.5	0.242	0.130	(34.6%)	3,109	409	0.0%	0.9%	
Oil & Gas		NM	0.80	4.50%				375.8			(3.9%)	12,284,422	482,457		0.1%	
▲ Kuwait Foundry Co.	KFDC.KW	18.1	0.80	3.51%	0.51	0.285	0.010	43.9	0.390	0.275	(12.3%)	23,517	6,603	3.5%	4.4%	
= Boubyan Petrochemicals Co.*	BPCC.KW	11.0	1.16	6.92%	1.38	0.610	0.000	310.7	0.800	0.560	(6.2%)	384,388	231,133	1.9%	10.6%	
= Al Kout for Industrial Projects Co.	ALKK.KW	10.9	1.96	6.56%	0.05	0.610	0.000	53.8	0.610	0.520	25.0%	0	0	0.0%	18.0%	
= Qurain Petrochemical Industries Co. *	ALQK.KW	6.9	0.75	4.57%	1.16	0.210	0.000	231.0	0.270	0.182	4.0%	142,230	29,792	1.8%	10.9%	
Basic Materials		9.2	0.97	5.81%				639.4			(1.5%)	550,135	267,527		10.5%	
= Specialities Group Holding Co.	SPEC.KW	9.4	0.49	5.55%	NA	0.120	0.000	18.0	0.194	0.106	(11.8%)	0	0	1.3%	5.2%	
= Kuwait Cement Co.	KCEM.KW	15.2	1.36	4.86%	1.13	0.360	0.000	264.0	0.455	0.340	(10.0%)	1,417	510	0.2%	8.9%	
= Refrigeration Industries & Storage Co.	REFR.KW	10.0	1.41	4.24%	0.64	0.350	0.000	31.3	0.365	0.325	4.5%	0	0	0.4%	14.1%	
= Gulf Cable & Electrical Ind. Co.	CABL.KW	28.6	0.99	3.23%	0.92	0.620	0.000	130.2	0.830	0.520	(7.2%)	0	0	1.2%	3.5%	
= Heavy Eng'g Ind. & Shipbuilding Co.	SHIP.KW	9.0	0.63	3.73%	0.97	0.134	0.000	23.0	0.156	0.112	(9.5%)	1,000	134	1.2%	7.0%	
▼ Kuwait Portland Cement Co.	PCEM.KW	13.9	1.68	5.56%	1.15	1.260	(0.020)	114.5	1.440	1.220	2.3%	32,944	41,509	1.9%	12.1%	
= Shuaiba Industrial Co.	PAPE.KW	15.1	1.23	5.93%	0.45	0.330	0.000	21.3	0.355	0.232	29.4%	0	0	25.1%	8.1%	
= Metal & Recycling Co.	MRCK.KW	15.4	0.41	0.00%	1.11	0.083	0.000	6.9	0.130	0.076	2.5%	0	0	0.8%	2.6%	
= ACICO Industries Co.	ACIC.KW	9.6	0.88	4.90%	0.94	0.305	0.000	79.7	0.370	0.280	1.7%	3,532	1,060	2.0%	9.2%	
= Gulf Glass Manufacturing Co.	GGMC.KW	15.1	1.71	4.84%	0.33	0.620	0.000	27.5	0.750	0.430	40.9%	0	0	0.6%	11.4%	
= Hilal Cement Co.	HCCK.KW	NM	0.82	0.00%	0.14	0.170	0.000	11.9	0.232	0.100	18.1%	0	0	0.0%	NM	
= Kuwait Packing Materials Co.	KPAK.KW	9.8	1.26	4.94%	0.25	0.405	0.000	18.8	0.630	0.375	4.9%	0	0	0.1%	12.9%	
▲ Kuwait Building Materials Co.	KBMM.KW	18.8	2.18	3.61%	0.10	0.415	0.025	12.6	0.455	0.150	(6.7%)	11	5	0.0%	11.6%	
= National Industries Co.	NIBM.KW	9.9	0.81	7.28%	0.48	0.206	0.000	72.8	0.240	0.192	6.3%	0	0	0.5%	8.2%	
▼ Equipment Holding Co.	EQUI.KW	11.2	0.58	0.00%	1.27	0.080	(0.002)	10.9	0.160	0.080	(18.4%)	1,494,341	120,188	137.5%	5.2%	
= National Co. for Consumer Industries	NCCI.KW	33.7	1.53	0.00%	0.32	0.124	0.000	11.2	0.128	0.063	14.8%	0	0	0.0%	4.6%	
= Kuwait Gypsum Manufacturing & Tdg. Co.	GYPK.KW	10.7	0.75	8.30%	0.03	0.120	0.000	3.6	0.170	0.100	(23.5%)	0	0	0.2%	7.0%	
= Salbookh Trading Co.	SALB.KW	NM	1.45	0.00%	0.66	0.134	0.000	14.1	0.152	0.057	50.6%	0	0	96.9%	1.1%	
= Agility (PWC Logistics)	AGLT.KW	17.9	1.03	4.22%	1.93	0.790	0.000	911.8	0.920	0.620	6.8%	183,204	142,902	7.0%	5.7%	
= Educational Holding Group*	EDUK.KW	9.9	1.13	5.86%	0.58	0.170	0.000	41.7	0.180	0.140	9.8%	49,110	8,349	1.4%	11.4%	
= National Cleaning Co.	CLEA.KW	28.0	0.37	0.00%	1.12	0.057	0.000	14.2	0.136	0.050	(10.9%)	788,394	44,150	36.7%	1.3%	
▲ City Group Co.	TTGC.KW	9.5	2.00	9.00%	0.38	0.500	0.025	56.5	0.500	0.380	31.6%	2,010	1,005	0.5%	21.1%	
▼ Kuwait & Gulf Link Transport Co.	KGLK.KW	15.2	0.30	0.00%	1.60	0.056	(0.001)	14.8	0.102	0.045	(3.4%)	856,468	48,489	30.8%	2.0%	
= Kuwait Co. For Process Plant Const. & Cont.	KPCP.KW	8.4	0.80	1.96%	0.40	0.250	0.000	18.2	0.310	0.234	3.3%	0	0	0.8%	9.5%	
▼ Human Soft Holding Co.	HUMN.KW	9.3	2.44	11.11%	0.11	0.630	(0.020)	77.0	0.710	0.345	63.6%	18	12	0.8%	26.2%	
= Nafais Holding Co.	NAFA.KW	5.6	0.60	11.15%	0.19	0.088	0.000	37.1	0.106	0.075	1.1%	29,498	2,596	1.1%	10.7%	
= Safwan Trading & Contracting Co.	SAFW.KW	8.9	1.59	0.00%	0.14	0.440	0.000	22.0	0.475	0.405	8.6%	0	0	0.0%	17.9%	
▼ Gulf Franchising Co.	GFCI.KW	NM	0.95	0.00%	0.88	0.081	(0.003)	2.6	0.086	0.047	55.8%	300,638	24,015	21.9%	NM	
▼ National Ranges Co.	MAYA.KW	NM	0.34	0.00%	1.56	0.033	(0.001)	9.2	0.066	0.014	8.2%	8,733,492	288,361	414.1%	NM	
= Combined Group Contracting Co.	CGCK.KW	19.5	2.42	3.89%	0.72	0.900	0.000	100.4	1.220	0.780	(2.2%)	10,817	9,735	0.4%	12.4%	
▼ Mishref General Trading & Contracting Co.	MTCC.KW	NM	0.57	0.00%	0.61	0.055	(0.002)	22.0	0.104	0.050	(11.3%)	429,098	23,721	18.2%	NM	
= United Projects Group	UPAC.KW	10.9	2.31	9.14%	0.38	0.750	0.000	61.9	0.790	0.600	(2.6%)	0	0	0.0%	21.2%	
▲ ALAFCO Aviation Lease & Finance Co.*	ALAF.KW	11.4	0.93	2.08%	1.25	0.218	0.002	187.4	0.275	0.212	(12.1%)	278,750	60,767	1.9%	8.2%	
= Mubarrad Transport Co.	MBRD.KW	7.6	0.72	6.02%	1.30	0.083	0.000	13.6	0.093	0.050	46.7%	431,460	35,821	85.3%	9.4%	
= KGL Logistics Co.	LOGK.KW	9.4	0.60	6.15%	1.27	0.081	0.000	49.1	0.188	0.073	(22.1%)	23,100	1,861	4.7%	6.4%	
= Sharjah Cement Co.	SCEM.KW	9.7	0.42	11.49%	0.68	0.087	0.000	48.1	0.100	0.084	(4.4%)	0	0	3.0%	4.4%	

Kuwait Stock Exchange Daily Bulletin

Monday, May 4, 2015

Company	Reuters Ticker	Valuation Multiples				Price (KWD)		MKT Cap (KWD Mn.)	52 Weeks High (KWD)	52 Weeks Low (KWD)	YTD-15 Return #	Daily Trading Data		YTD-15 Capital Turnover	ROE
		Trailing P/E (X)	Trailing P/BV (X)	Dividend Yield	Beta	Closing	DTD Change					Volume (Shrs.)	Value (KWD)		
▼ Gulf Cement Co.	GCEM.KW	15.2	0.75	6.40%	0.96	0.086	(0.001)	70.6	0.120	0.083	49.4%	94,885	8,195	7.5%	5.0%
= Umm Al-Qaiwain Cement Industries Co.	QCEM.KW	73.5	0.61	7.61%	0.81	0.092	0.000	33.4	0.106	0.088	(9.8%)	0	0	2.3%	0.8%
▼ Fujairah Cement Industries Co.	FCEM.KW	12.8	0.35	0.00%	0.87	0.074	(0.002)	26.3	0.094	0.067	(2.6%)	329,000	24,646	7.0%	2.7%
▼ Ras-Al-Khaimah for White Cement Co.	RKWC.KW	20.6	0.73	4.72%	1.10	0.106	(0.002)	52.0	0.154	0.100	60.4%	665	69	0.3%	3.6%
Industrials		15.1	0.97	4.79%				2,742.2			0.5%	14,073,852	888,100		6.4%
▼ Kuwait Slaughter House Co.	KSHK.KW	17.8	1.79	5.14%	0.07	0.226	(0.004)	7.0	0.230	0.196	0.0%	30,000	6,780	0.2%	10.1%
= National Slaughter Houses Co.	NSHK.KW	16.1	1.17	9.21%	0.05	0.152	0.000	4.4	0.172	0.132	1.3%	0	0	0.1%	7.3%
= Palms Agro Production Co.	PAPK.KW	10.9	0.60	10.19%	0.37	0.098	0.000	5.1	0.138	0.098	(18.3%)	0	0	0.1%	5.5%
▼ Livestock Transport & Trading Co.	CATT.KW	NM	0.68	0.00%	0.66	0.108	(0.002)	23.4	0.248	0.099	(26.0%)	21,721	2,349	1.2%	NM
▲ Danah Alsafat Foodstuff Co.	DANK.KW	49.8	0.66	0.00%	1.51	0.079	0.001	22.8	0.093	0.063	5.3%	1,431,546	111,272	29.6%	1.3%
▲ Kuwait United Poultry Co.	POUL.KW	9.0	1.21	7.28%	0.58	0.200	0.002	23.1	0.212	0.144	19.4%	72,474	14,422	5.3%	13.5%
= Kuwait Food Co. (Americana)	FOOD.KW	20.1	2.87	3.37%	0.82	2.600	0.000	1,045.2	3.260	2.480	(3.9%)	2	5	1.9%	14.3%
Consumer Goods		21.2	2.41	3.37%				1,131.0			(7.1%)	1,555,743	134,829		11.4%
= AL-Mowasat Healthcare Co.	MHCK.KW	7.5	0.75	6.41%	0.07	0.156	0.000	15.1	0.188	0.156	(15.2%)	0	0	0.0%	10.0%
= Advanced Technology Co.	ATCK.KW	31.2	3.24	1.63%	NA	0.920	0.000	138.0	0.930	0.880	0.5%	0	0	0.1%	10.4%
▲ Yiac Medical Co.	YIAC.KW	11.3	0.62	0.00%	0.91	0.124	0.006	22.6	0.350	0.104	(15.1%)	10	1	7.8%	5.5%
Health Care		20.9	1.78	1.83%				175.7			(4.5%)	10	1		8.5%
= Kuwait National Cinema Co.	KCIN.KW	11.8	1.63	4.91%	0.22	1.020	0.000	103.1	1.500	0.850	9.3%	0	0	16.2%	13.7%
= Kuwait Hotels Co.	KHOT.KW	NM	1.77	0.00%	0.12	0.178	0.000	10.3	0.178	0.096	0.0%	0	0	0.0%	0.2%
▼ Sultan Center Food Products Co.	SCFK.KW	54.4	1.25	0.00%	1.88	0.087	(0.001)	50.4	0.118	0.081	(5.4%)	396,084	34,106	1.4%	2.3%
▼ Kuwait Cable Vision Co.	KWTV.KW	NM	1.44	0.00%	0.49	0.034	(0.003)	1.0	0.048	0.024	(6.9%)	36,707	1,230	7.2%	NM
= EYAS for Higher & Technical Education Co.*	EYAS.KW	10.4	1.31	6.35%	0.10	0.315	0.000	36.4	0.335	0.270	8.1%	0	0	0.0%	12.6%
= IFA Hotels & Resorts Co.*	IFAH.KW	NM	2.58	0.00%	0.55	0.214	0.000	136.0	0.232	0.170	7.0%	0	0	0.0%	NM
▲ Oula Fuel Marketing Co.	OULA.KW	11.8	0.86	0.00%	0.45	0.124	0.006	47.3	0.210	0.116	(16.2%)	556,745	66,417	2.5%	7.3%
▲ Kuwait Resorts Co.	MUNK.KW	6.3	0.92	5.43%	0.63	0.104	0.002	19.5	0.110	0.072	23.6%	20,000	2,080	30.9%	14.7%
= Jazeera Airways Co.	JAZK.KW	NM	3.24	9.16%	0.81	0.520	0.000	218.4	0.570	0.400	18.2%	1,243,850	646,802	11.7%	NM
= Soor Fuel Marketing Co.	SOOR.KW	11.3	0.87	0.00%	0.60	0.120	0.000	46.3	0.180	0.118	(14.3%)	132,650	15,990	2.6%	7.7%
= Future Kid Entertainment and R.E Co.	KIDK.KW	14.5	0.46	7.08%	0.09	0.080	0.000	9.3	0.128	0.080	(29.8%)	7,000	560	0.2%	3.2%
= Al-Nawadi Holding Co.	ALNA.KW	6.1	0.67	0.00%	0.01	0.102	0.000	16.9	0.150	0.095	(15.0%)	0	0	1.8%	11.0%
= Al Rai Media Group Co.	ALRA.KW	5.2	0.68	6.65%	0.94	0.112	0.000	26.1	0.150	0.098	8.6%	365,343	40,882	10.0%	13.2%
▼ Zima Holding Co.	ZIMAH.KW	NM	0.73	0.00%	NA	0.074	(0.005)	7.4	0.178	0.074	(31.5%)	37,021	2,740	0.2%	NM
= United Foodstuff Industries Group Co.	UFIG.KW	7.5	1.45	0.00%	0.04	0.192	0.000	6.4	0.295	0.172	(20.7%)	0	0	0.1%	19.5%
▲ Kout Food Group	KOUT.KW	8.2	1.27	5.15%	0.17	0.680	0.020	49.8	0.930	0.660	(14.9%)	9,132	6,210	3.1%	15.5%
Consumer Services		NM	1.50	4.26%				784.4			0.9%	2,804,532	817,017		1.2%
▼ Zain	ZAIN.KW	10.7	1.28	7.51%	1.64	0.480	(0.005)	2,074.3	0.680	0.455	(1.9%)	1,443,327	694,693	5.8%	12.0%
= National Mobile Telecom Co.	OORE.KW	15.7	0.97	4.90%	1.18	1.420	0.000	715.7	1.800	1.280	6.4%	3,869	5,494	0.5%	6.2%
▼ Hits Telecom Holding Co.	HITS.KW	NM	0.44	0.00%	0.99	0.034	(0.002)	29.2	0.055	0.026	9.8%	45,161,398	1,547,641	89.6%	NM
▲ Kuwait Telecommunication Co.	VIVA.KW	10.9	8.80	0.00%	NA	0.880	0.010	439.5	0.920	0.475	35.4%	1,677,008	1,474,470	48.9%	80.8%
Telecommunications		11.9	1.31	5.86%				3,258.7			(2.6%)	48,285,602	3,722,299		11.1%
= National Bank of Kuwait	NBKK.KW	16.6	1.73	3.26%	1.48	0.860	0.000	4,334.2	1.000	0.790	2.6%	282,761	241,210	2.6%	10.4%
= Gulf Bank	GBKK.KW	24.1	1.67	0.00%	0.90	0.280	0.000	853.5	0.370	0.265	1.6%	697,126	192,574	2.0%	6.9%
▼ Commercial Bank of Kuwait	CBKK.KW	17.8	1.58	2.90%	0.82	0.620	(0.030)	875.4	0.740	0.590	1.3%	21	13	1.5%	8.9%
▲ Ahli Bank of Kuwait	ABKK.KW	15.9	1.07	3.51%	0.73	0.370	0.005	599.1	0.450	0.355	(9.8%)	638,000	230,480	0.4%	6.7%
= Ahli United Bank - Kuwait	BKME.KW	18.4	2.65	1.50%	1.03	0.550	0.000	866.2	0.690	0.540	(3.1%)	0	0	0.6%	14.4%
= Kuwait International Bank	KIBK.KW	19.3	1.11	3.18%	1.47	0.255	0.000	264.5	0.330	0.240	2.8%	316,218	80,636	3.1%	5.8%
▼ Burgan Bank	BURG.KW	14.8	1.38	3.08%	1.33	0.445	(0.005)	912.0	0.570	0.430	0.7%	1,018,988	453,427	3.2%	9.3%
▼ Kuwait Finance House	KFIN.KW	25.2	1.83	2.00%	1.51	0.670	(0.010)	3,192.6	0.870	0.650	4.6%	1,827,603	1,225,279	3.2%	7.2%
▼ Boubyan Bank	BOUK.KW	31.4	3.00	0.00%	1.49	0.430	(0.005)	887.2	0.550	0.375	11.3%	536,999	230,910	4.7%	9.5%
▼ Warba Bank	WARB.KW	NM	2.48	0.00%	NA	0.228	(0.002)	228.0	0.295	0.194	(3.4%)	810,506	184,791	14.5%	0.1%
= Ahli United Bank - Bahrain	AUBK.KW	10.0	1.38	5.68%	0.61	0.218	0.000	1,374.1	0.248	0.216	2.5%	1,990,778	431,008	1.6%	13.9%
▼ Ithmaar Bank	ITHMR.KW	NM	0.94	0.00%	1.28	0.048	(0.002)	144.0	0.058	0.035	2.2%	3,969,430	189,808	13.4%	NM
Banks		18.3	1.68	2.61%				14,530.7			(0.4%)	12,088,430	3,460,135		9.2%

Kuwait Stock Exchange Daily Bulletin

Monday, May 4, 2015

Company	Reuters Ticker	Valuation Multiples				Price (KWD)			MKT Cap (KWD Mn.)	52 Weeks High (KWD)	52 Weeks Low (KWD)	YTD-15 Return #	Daily Trading Data		YTD-15 Capital Turnover	ROE
		Trailing P/E (X)	Trailing P/BV (X)	Dividend Yield	Beta	Closing	DTD Change	Volume (Shrs.)					Value (KWD)			
▲ Kuwait Insurance Co.	KINS.KW	12.1	1.03	6.02%	0.24	0.320	0.025	62.1	0.330	0.270	17.2%	50,000	15,500	0.4%	8.5%	
= Gulf Insurance Group	GINS.KW	9.4	1.33	5.40%	0.24	0.600	0.000	112.2	0.650	0.540	0.0%	0	0	0.1%	14.3%	
▲ Ahleiah Insurance Co.	AINS.KW	10.8	0.94	6.96%	0.21	0.460	0.010	92.0	0.500	0.450	(0.6%)	3,750	1,720	0.4%	8.7%	
= Warba Insurance Co.	WINS.KW	13.8	0.45	6.26%	0.33	0.120	0.000	20.7	0.160	0.102	3.4%	0	0	0.6%	3.2%	
= Kuwait Reinsurance Co.	KWRE.KW	NM	0.73	5.15%	0.02	0.194	0.000	29.1	0.200	0.140	2.0%	0	0	0.5%	NM	
= First Takaful Insurance Co.	FTIK.KW	NM	9.25	0.00%	0.19	0.093	0.000	9.3	0.093	0.093	0.0%	0	0	0.0%	NM	
▲ Wethaq Takaful Insurance Co.	WETH.KW	11.2	0.40	0.00%	0.12	0.043	0.001	4.7	0.069	0.039	(22.7%)	5,000	213	7.1%	3.6%	
= Bahrain Kuwait Insurance Co.	BKIK.KW	7.7	0.93	9.85%	0.01	0.355	0.000	25.4	0.000	0.000	0.0%	0	0	0.0%	12.1%	
Insurance		14.2	0.96	6.05%				355.5			(0.4%)	58,750	17,433		6.8%	
= Sokouk Holding Co.	SHCK.KW	6.8	0.43	0.00%	1.76	0.060	0.000	33.9	0.110	0.050	(3.2%)	1,084,512	64,216	30.5%	6.3%	
▼ Kuwait Real Estate Co.	KREK.KW	9.2	0.51	6.93%	1.38	0.072	(0.001)	65.3	0.091	0.058	8.5%	2,062,908	148,330	19.7%	5.6%	
= United Real Estate Co.	UREK.KW	14.2	0.56	5.32%	1.48	0.094	0.000	111.7	0.120	0.089	(1.0%)	0	0	0.9%	4.0%	
▲ National Real Estate Co.	NREK.KW	9.6	0.50	0.00%	1.95	0.112	0.002	100.5	0.170	0.110	(15.2%)	1,647,552	182,998	5.3%	5.2%	
= Salhia Real Estate Co.	SREK.KW	15.7	1.29	5.52%	0.43	0.350	0.000	179.5	0.400	0.335	(1.3%)	22,000	7,700	0.2%	8.2%	
= Tamdeen Real Estate Co.	TAMK.KW	24.4	1.33	2.16%	0.86	0.460	0.000	180.2	0.480	0.260	1.1%	0	0	0.4%	5.5%	
= Ajial Real Estate Entertainment Co.	AREC.KW	57.7	0.32	0.00%	0.46	0.208	0.000	36.7	0.238	0.192	(4.6%)	20,000	4,160	2.3%	0.5%	
▼ Al Massaleh Real Estate Co.	MREC.KW	NM	0.39	0.00%	0.68	0.056	(0.002)	13.2	0.085	0.054	(20.0%)	30,000	1,672	3.6%	NM	
▼ Arab Real Estate Co.	ARAB.KW	14.6	0.32	0.00%	1.55	0.044	(0.002)	22.2	0.060	0.034	(6.5%)	1,412,477	61,801	28.2%	2.2%	
▼ AL-Enma'a Real Estate Co.*	ENMA.KW	10.9	0.47	0.00%	0.87	0.066	(0.001)	29.7	0.097	0.064	(14.3%)	1,403,175	93,515	13.7%	4.3%	
= Mabanee Co.	MABK.KW	16.9	3.10	1.35%	1.41	0.960	0.000	815.6	1.180	0.840	16.6%	364,161	349,595	2.8%	18.3%	
▼ Injazzat Real Estate Development Co.	INJA.KW	17.3	0.47	0.00%	1.25	0.076	(0.001)	26.3	0.084	0.059	15.2%	30,340	2,246	6.3%	2.7%	
▼ Investors Holding Group Co.	INVK.KW	NM	0.83	0.00%	1.69	0.036	(0.001)	22.8	0.063	0.015	(2.7%)	12,293,689	437,405	209.3%	NM	
▲ International Resorts Co.	IRCK.KW	NM	0.56	0.00%	1.60	0.044	0.001	6.7	0.075	0.030	3.6%	6,684,918	288,832	26.6%	NM	
= The Commercial Real Estate Co.	TIJK.KW	8.3	0.59	6.49%	1.29	0.088	0.000	157.3	0.104	0.082	2.5%	1,091,022	96,010	14.8%	7.1%	
▲ Sanam Real Estate Co.	SANK.KW	NM	0.68	0.00%	0.44	0.060	0.002	7.3	0.070	0.050	(1.6%)	300	18	11.1%	NM	
▼ A'ayan Real Estate Co.	AYRE.KW	11.7	0.48	5.49%	1.19	0.091	(0.002)	36.0	0.114	0.079	7.9%	924,536	86,076	12.7%	4.1%	
= Aqar Real Estate Investment Co.	AQAR.KW	8.4	0.69	6.11%	0.50	0.080	0.000	18.7	0.095	0.075	(15.8%)	2,300	184	1.9%	8.3%	
= Kuwait Real Estate Holding Co.	ALAQ.KW	9.7	0.78	0.00%	0.99	0.035	0.000	6.7	0.045	0.023	(12.5%)	0	0	1.3%	8.0%	
▼ MAZAYA Holding Co.	MAZA.KW	10.6	0.85	4.38%	1.29	0.124	(0.002)	85.3	0.144	0.096	0.0%	324,311	39,573	20.2%	8.0%	
▼ Al Dar National Real Estate Co.	ADNC.KW	10.5	0.89	0.00%	1.15	0.025	(0.001)	10.3	0.045	0.017	2.1%	9,574,385	234,924	208.4%	8.4%	
= AL-Themar International Holding Co.*	THMR.KW	34.6	0.77	0.00%	0.52	0.090	0.000	91.1	0.110	0.090	0.0%	45,000	4,050	0.4%	2.2%	
= Tijara Real Estate & Investment Co.	TIJA.KW	11.4	0.57	0.00%	0.57	0.054	0.000	20.8	0.076	0.050	(6.9%)	582,500	30,925	11.6%	5.0%	
▼ Al TAMEER Real Estate Investment Co.	AMAR.KW	NM	0.37	0.00%	0.42	0.032	(0.001)	7.7	0.050	0.029	(7.2%)	61,500	1,968	12.7%	NM	
▲ Arkan Al-Kuwait Real Estate Co. *	ARKK.KW	4.5	0.93	0.00%	0.33	0.120	0.010	28.7	0.140	0.102	15.8%	3,000	360	0.3%	20.6%	
▲ Al-Argan International Real Estate Co.	ARGK.KW	11.4	0.70	3.38%	0.39	0.200	0.010	53.0	0.220	0.160	9.9%	44,251	8,850	1.5%	6.1%	
= Abyaar Real Estate Development Co.	ABYR.KW	49.9	0.40	0.00%	1.57	0.034	0.000	37.6	0.052	0.028	4.6%	5,832,145	195,716	31.4%	0.8%	
▼ Munshaat Real Estate Projects Co.	MUNS.KW	2.7	0.39	5.21%	1.65	0.096	(0.002)	30.9	0.170	0.092	(17.2%)	660,700	63,987	24.5%	14.5%	
▼ First Dubai For Real Estate Development	FIRST.KW	18.9	1.10	0.00%	1.32	0.067	(0.001)	67.0	0.114	0.050	1.5%	514,808	34,492	13.5%	5.8%	
▲ Kuwait Business Town Real Estate Co.	KBTK.KW	7.6	0.44	0.00%	0.93	0.047	0.003	24.0	0.057	0.025	34.8%	6,715,710	304,392	33.4%	5.8%	
▲ Real Estate Asset Management Co.	REAM.KW	20.2	0.98	12.27%	NA	0.150	0.006	15.7	0.158	0.099	53.2%	154,308	22,946	1.5%	4.9%	
= MENA Real Estate Co. *	MENK.KW	NM	0.51	0.00%	1.05	0.037	0.000	7.3	0.050	0.029	(2.6%)	0	0	4.2%	NM	
= Al Mudon International Real Estate Co.	ALMK.KW	19.2	0.38	0.00%	0.58	0.057	0.000	5.7	0.130	0.051	(16.2%)	2,767,290	155,371	387.8%	2.0%	
▼ Real Estate Trade Centers Co.	MARA.KW	28.2	0.15	0.00%	NA	0.027	(0.002)	3.1	0.054	0.026	(25.0%)	26,983	771	9.4%	0.5%	
= Kuwait Remal Real Estate Co.	REMAL.KW	9.1	0.35	0.00%	NA	0.057	0.000	17.4	0.100	0.047	(5.0%)	637,250	36,053	55.8%	3.9%	
= Mashaer Holding Co.	MASK.KW	NM	0.63	0.00%	1.02	0.132	0.000	23.7	0.208	0.104	(19.5%)	70,000	9,240	3.6%	NM	
Real Estate		14.5	0.86	2.46%				2,399.7			0.3%	57,088,031	2,968,375		6.0%	
= Kuwait Investment Co.	KINV.KW	11.6	0.55	7.43%	1.07	0.134	0.000	73.9	0.174	0.128	(5.6%)	828	111	1.2%	4.7%	
= Commercial Facilities Co.	FACI.KW	11.7	0.75	8.30%	0.88	0.238	0.000	127.7	0.300	0.236	(13.5%)	68,450	16,308	2.6%	6.4%	
▲ Int'l Financial Advisors Co.	IFIN.KW	NM	0.50	0.00%	1.47	0.041	0.003	29.2	0.066	0.032	(1.2%)	5,519,462	223,483	14.7%	NM	
= National Investment Co.	NINV.KW	17.1	0.62	4.55%	1.49	0.130	0.000	113.9	0.188	0.124	(14.5%)	472,610	61,364	4.6%	3.6%	

Kuwait Stock Exchange Daily Bulletin

Monday, May 4, 2015

Company	Reuters Ticker	Valuation Multiples				Price (KWD)		MKT Cap (KWD Mn.)	52 Weeks High (KWD)	52 Weeks Low (KWD)	YTD-15 Return #	Daily Trading Data		YTD-15 Capital Turnover	ROE
		Trailing P/E (X)	Trailing P/BV (X)	Dividend Yield	Beta	Closing	DTD Change					Volume (Shrs.)	Value (KWD)		
▼ Kuwait Projects Co.(Holding)	KPRO.KW	20.8	1.86	3.78%	1.57	0.650	(0.020)	957.8	0.750	0.600	(7.1%)	1,333,437	869,678	5.7%	8.9%
= Coast Invest. & Development Co.	COAS.KW	3.7	0.57	0.00%	1.46	0.057	0.000	35.6	0.087	0.040	(1.7%)	5,332,160	302,712	41.4%	15.4%
= The Securities House Co.	SECH.KW	14.6	0.82	0.00%	0.79	0.065	0.000	44.2	0.098	0.063	(17.7%)	2,667,945	173,370	20.6%	5.6%
= Securities Group *	SGCK.KW	11.3	0.52	8.92%	0.79	0.112	0.000	28.6	0.140	0.097	(5.1%)	0	0	0.4%	4.6%
= Arzan Financial Group For Fin. & Invest.	ARZA.KW	11.6	0.37	0.00%	0.56	0.052	0.000	41.7	0.072	0.043	8.3%	542,787	28,199	2.6%	3.2%
▼ Kuwait Financial Centre	MARKZ.KW	14.3	0.59	5.03%	1.63	0.108	(0.008)	57.4	0.150	0.100	(10.0%)	205,000	22,310	1.1%	4.1%
= Kuwait & M.E. Financial Inv. Co.	KMEF.KW	NM	0.49	0.00%	0.42	0.040	0.000	10.6	0.057	0.037	(16.7%)	0	0	0.4%	NM
▼ Al-Aman Investment Co.	AMAN.KW	3.5	0.61	7.46%	0.72	0.067	(0.003)	13.2	0.104	0.063	(13.0%)	1,015,250	68,392	39.9%	17.2%
= First Investment Co.	OLAK.KW	13.1	0.56	0.00%	1.15	0.085	0.000	55.3	0.124	0.076	(18.3%)	1,068,500	90,508	33.8%	4.3%
▼ Al-Mal Investment Co.	MALK.KW	NM	0.97	0.00%	1.71	0.035	(0.000)	23.5	0.057	0.025	6.1%	1,749,920	61,787	37.4%	NM
= Gulf Investment House	GIHK.KW	NM	0.59	0.00%	1.09	0.052	0.000	8.5	0.091	0.022	(3.7%)	0	0	153.3%	NM
= A'ayan Leasing & Investment Co.	AAYA.KW	5.3	0.74	0.00%	1.37	0.063	0.000	51.7	0.087	0.056	(1.6%)	653,001	40,826	22.2%	13.9%
▲ Bayan Investment Co.	BAYK.KW	8.5	0.58	0.00%	1.92	0.054	0.004	21.2	0.096	0.048	(6.9%)	5,016,531	265,562	48.8%	6.9%
= Osoul Investment Co.	OSUL.KW	44.8	0.55	0.00%	1.06	0.058	0.000	10.9	0.086	0.056	(22.7%)	0	0	2.8%	1.2%
= Kuwait Finance & Investment Co.	KFSK.KW	11.3	0.50	0.00%	0.44	0.060	0.000	18.4	0.085	0.052	0.0%	0	0	2.6%	4.4%
= KAMCO Investment Co.	KAMC.KW	15.6	0.80	3.91%	0.53	0.116	0.000	30.5	0.124	0.090	26.0%	0	0	0.5%	5.1%
= National International Holding Co.	NIHK.KW	15.2	0.40	5.70%	0.28	0.068	0.000	14.5	0.077	0.049	23.6%	0	0	61.1%	2.6%
= Housing Finance Co.	ISKN.KW	8.8	0.43	0.00%	0.40	0.018	0.000	5.2	0.041	0.015	0.0%	0	0	0.0%	4.9%
▼ Al Madar Finance & Investment Co.	MADR.KW	NM	0.23	0.00%	0.57	0.019	(0.001)	4.0	0.059	0.016	(43.9%)	144,207	2,728	10.9%	NM
▲ Al-Deera Holding	DEER.KW	NM	0.45	0.00%	0.90	0.042	0.003	8.2	0.042	0.009	(15.5%)	7,781,476	321,595	132.3%	NM
▼ Al Salam Group Holding Co.	SAGH.KW	7.6	0.43	0.00%	1.03	0.056	(0.001)	15.1	0.112	0.047	1.4%	1,378,345	77,368	111.4%	5.6%
▼ Ektitab Holding Co.	EKTT.KW	NM	0.52	0.00%	1.60	0.045	(0.001)	14.3	0.065	0.036	8.4%	3,484,141	154,489	66.1%	NM
= Al Qurain Holding Co.	QURK.KW	6.2	0.38	0.00%	1.57	0.013	0.000	3.7	0.050	0.010	(19.4%)	0	0	40.7%	6.1%
= Al Madina For Finance & Investment Co.	MADI.KW	NM	0.68	0.00%	1.42	0.046	0.000	18.7	0.064	0.023	58.6%	12,771,881	575,425	178.0%	NM
▼ NOOR Financial Investment Co.	NOOR.KW	41.8	0.85	0.00%	1.81	0.093	(0.001)	38.4	0.150	0.078	(4.1%)	20,050	1,825	6.7%	2.0%
= Tamdeen Investment Co.	TAMI.KW	12.9	0.83	2.29%	0.84	0.375	0.000	116.9	0.415	0.238	(5.1%)	0	0	1.0%	6.4%
= Kuwait Bahrain Int'l Exchange Co.	EXCH.KW	8.1	0.88	7.69%	0.37	0.130	0.000	6.0	0.200	0.130	(18.8%)	0	0	0.4%	10.9%
= Taiba Kuwaiti Holding Co.	DAMK.KW	18.3	0.74	5.11%	0.39	0.088	0.000	15.8	0.090	0.065	0.0%	0	0	0.0%	4.0%
▼ Kuwait Syrian Holding Co.	KSHC.KW	NM	0.33	0.00%	1.68	0.033	(0.001)	5.8	0.038	0.013	33.7%	2,949,756	97,896	42.3%	NM
▲ Strategia Investment Co.	STRAT.KW	13.3	0.44	0.00%	0.92	0.050	0.003	15.0	0.085	0.046	(15.3%)	11,951	598	0.1%	3.3%
▼ Asiya Capital Investment Co.	ASIYA.KW	24.8	0.50	8.82%	1.60	0.055	(0.001)	44.0	0.067	0.046	7.8%	666,769	36,673	6.2%	2.0%
= Manafae Investment Co.	MANF.KW	22.9	0.75	0.00%	0.57	0.064	0.000	12.9	0.098	0.054	10.3%	0	0	0.7%	3.3%
▼ Gulf North Africa Holding Co.	GNAH.KW	15.0	0.41	0.00%	1.76	0.041	(0.001)	6.2	0.063	0.031	17.1%	2,254,962	92,612	112.3%	2.7%
= Amwal International Investment Co.	AMWA.KW	19.3	0.34	0.00%	NA	0.031	0.000	5.6	0.056	0.028	(6.1%)	0	0	16.7%	1.8%
▲ Alimtiaw Investment Group	ALIMK.KW	13.8	0.48	6.57%	NA	0.075	0.001	85.0	0.085	0.052	10.3%	3,548,360	265,418	24.6%	3.5%
▼ Manazel Holding Co.	MANK.KW	3.8	0.83	0.00%	2.23	0.042	(0.001)	30.0	0.066	0.037	(7.7%)	1,900,450	79,969	53.0%	22.1%
= National Industries Group	NIND.KW	9.0	0.58	6.23%	1.99	0.188	0.000	255.7	0.255	0.164	(1.1%)	381,100	71,644	4.8%	6.4%
▼ Boubyan Int'l Industries Holding Co. *	BIHC.KW	NM	0.50	0.00%	1.67	0.053	(0.001)	15.9	0.106	0.050	(23.2%)	1,717,117	91,007	50.1%	NM
▼ Arabi Holding Group Co.	AGHC.KW	8.7	0.79	0.00%	0.90	0.132	(0.006)	19.8	0.194	0.132	(15.4%)	122,002	16,392	3.0%	9.1%
= Privatization Holding Co.	KPPC.KW	8.6	0.41	8.47%	1.52	0.059	0.000	43.6	0.072	0.041	19.2%	0	0	25.4%	4.7%
= Credit Rating & Collection Co.	TAHS.KW	NM	0.78	0.00%	0.19	0.050	0.000	8.3	0.110	0.045	(7.4%)	0	0	1.2%	NM
▲ Jeeran Holding Co.*	JEER.KW	NM	0.42	0.00%	0.47	0.054	0.001	8.1	0.076	0.046	(22.9%)	16,000	834	0.6%	NM
= Egypt Kuwait Holding Co.	EKHK.KW	15.5	0.80	5.05%	0.80	0.198	0.000	193.2	0.305	0.180	(2.9%)	0	0	0.2%	5.2%
▼ Gulf Finance House	GFHK.KW	24.4	0.40	0.00%	1.60	0.062	(0.005)	78.4	0.069	0.015	(1.1%)	38,959,747	2,479,671	220.2%	1.6%
= Inovest	INOV.KW	NM	0.38	0.00%	1.10	0.063	0.000	18.1	0.082	0.056	(7.4%)	150,000	9,450	4.5%	NM
Financial Services		23.7	0.76	3.80%				2,860.3			(5.1%)	103,904,195	6,600,203		3.2%

Kuwait Stock Exchange Daily Bulletin

Monday, May 4, 2015

Company	Reuters Ticker	Valuation Multiples				Price (KWD)			MKT Cap (KWD Mn.)	52 Weeks High (KWD)	52 Weeks Low (KWD)	YTD-15 Return #	Daily Trading Data		YTD-15 Capital Turnover	ROE
		Trailing P/E (X)	Trailing P/BV (X)	Dividend Yield	Beta	Closing	DTD Change	Volume (Shrs.)					Value (KWD)			
= Automated Systems Co.	ASCK.KW	13.6	1.91	4.90%	0.40	0.510	0.000	20.4	0.550	0.375	25.9%	0	0	3.6%	14.1%	
▲ Al Safat TEC Holding Co.	SAFH.KW	NM	0.73	0.00%	1.28	0.049	0.001	19.6	0.069	0.045	(16.9%)	40,108	1,925	7.2%	0.5%	
= Future Communications Global Co.	FUTK.KW	12.5	0.71	12.50%	0.38	0.120	0.000	9.7	0.164	0.108	(6.3%)	0	0	5.5%	5.6%	
= Hayat Communications Co.	HAYK.KW	61.8	0.53	0.00%	0.57	0.054	0.000	5.0	0.095	0.053	(18.2%)	0	0	59.1%	0.9%	
Technology		21.9	0.90	4.05%				54.7			(2.8%)	40,108	1,925		4.1%	
Kuwait Stock Exchange		17.2	1.27	3.49%				29,308.1			(1.3%)	252,733,810	19,360,301		7.4%	

Year-to-Date 2015 Top Movers & Most Active Stocks

YTD Top % Gainers	Close (KWD)	Percent Change
Human Soft Holding Co.	0.630	63.6%
Ras AL Khaimah Co. for White Cement	0.106	60.4%
Al Madina For Finance & Investment Co.	0.046	58.6%
Gulf Franchising Co.	0.081	55.8%
Real Estate Asset Management Co.	0.150	53.2%

YTD Top % Losers	Close (KWD)	Percent Change
Al Madar Finance & Investment Co.	0.019	(43.9%)
Burgan Co. for Well Drilling	0.136	(34.6%)
Zima Holding Co.	0.074	(31.5%)
Future Kid Entertainment and Real Estate Cc	0.080	(29.8%)
Livestock Transport & Trading Co.	0.108	(26.0%)

YTD Most Active by Volume	Close (KWD)	Volume (Shrs.)
Gulf Finance House	0.062	2,784,444,315
Investors Holding Group Co.	0.036	1,345,602,984
National Ranges Co. (MAYADEEN)	0.033	1,160,383,817
Al Dar National Real Estate Co.	0.025	875,072,236
Hits Telecom Holding Co.	0.034	781,762,411

YTD Most Active by Value	Close (KWD)	Value (KWD)
Kuwait Telecommunication Co.	0.880	188,478,291
ZAIN	0.480	131,497,995
National Bank of Kuwait	0.860	113,428,943
Kuwait Finance House	0.670	112,405,072
Gulf Finance House	0.062	76,450,181

Notes: NM: Not Meaningful. NA: Not Available. CP: Current Price, Trailing P/E is calculated based on FY2014 net profits and current market cap. If calculated P/E is negative or greater than 80, it is represented by NM. Trailing P/BV is based on shareholders' equity as of 31-Dec-2014 and current market cap. Valuation multiples (P/E and P/BV) for companies that have not yet disclosed their FY2014 financials are based on TTM 9M-2014 net profits and shareholder's equity as of Sep-14. Dividend Yield for individual stocks is based on the Full Year 2013 Dividends & current market cap, and the sector's average is a weighted average based on the market cap. Beta is calculated on daily share prices returns against KAMCO TRW Index for the companies which have a minimum trading history of two years. Sectors' Beta is calculated based on five year daily returns against KAMCO TRW Index. DTD: daily change. MTD: Beginning of Current Month to Date YTD: Beginning of Year to Date. KWD: Kuwaiti Dinars. * Companies that vary in their fiscal years are treated separately to adjust for the recent results announcements. #YTD-15 return for individual stocks and sectors is calculated based on the change in market capitalization.

Disclaimer: This document and material contained herewith have been produced, compiled, and issued by KAMCO Investment Company-K.S.C. (Public). The Company has obtained the information used in this document from sources it believes to be reliable, but the issuer does not guarantee, neither its accuracy nor completeness, nor provides an independent verification of the material contained therein. KAMCO may, from time to time to the extent permitted by law, participate or invest in other financing transactions with the issuers of the securities, perform services for or solicit business from such issuer and/or have a position or effect transactions in the securities or options thereof. KAMCO may, to extent permitted by the applicable Kuwaiti law or other applicable laws and regulations, effect transactions in the securities before this material is published to recipients. The opinions and estimates expressed herein are those of the issuer and subject to change at any time without any prior notice. Accordingly, no representation or warranty, expressed or implied, is made as to and no reliance should be placed on the fairness, accuracy, completeness or correctness of the information and opinions contained in this document. KAMCO accepts no liability for any loss arising from the use of this document or its contents or otherwise arising in connection therewith. This document should not be relied upon or used in substitution for the exercise of sound judgment. KAMCO shall have no responsibility or liability whatsoever in respect of any inaccuracy in or omission from this or any other document prepared by KAMCO for, or sent by KAMCO to any entity, and any such entity shall be responsible for conducting its own scrutiny, investigation, and analysis of the information contained or referred to in this document and of evaluating the merits and risks involved in the securities forming the subject matter of this or other such document.

Opinions and estimates constitute KAMCO's judgment and are subject to change without prior notice. Past performance is not an indicator of future results. This document does not constitute an offer or invitation to subscribe for or purchase any securities, and neither this document nor anything contained herein shall form the basis of any contract or commitment whatsoever. This document is not an offer to sell or a solicitation to buy any securities. It is being furnished to the reader solely for his/her information and may not be redistributed inside Kuwait or by any jurisdiction outside Kuwait where this action is restricted by law. Entities who receive this report should make themselves aware of and adhere to any such restrictions. By accepting receipt of this report, the reader agrees to be bound by the foregoing limitations.