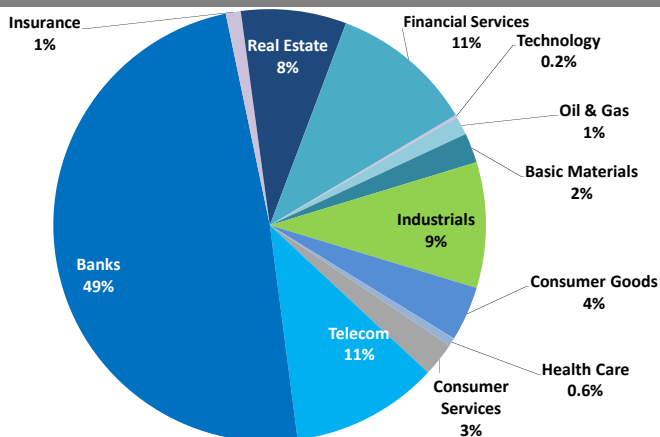


## Kuwait Market Daily Report

October 13, 2014

### Sector Weight by Market Cap



### Top 10 Kuwaiti Companies by Market Capitalization

Company Name	Market Cap. (Mn KWD)	P/E (X)	ROE* (%)
1- National Bank of Kuwait	4,751.7	18.7	10.1%
2- Kuwait Finance House	3,595.4	29.8	7.0%
3- Zain	2,809.0	12.9	14.2%
4- Ahli United Bank - Bahrain	1,368.7	11.0	14.0%
5- Kuwait Food Co. (Americana)	1,238.2	23.2	16.1%
6- Kuwait Projects Co.	1,061.0	24.3	8.4%
7- Agility	1,027.2	21.1	5.6%
8- Boubyan Bank	1,021.8	51.8	7.1%
9- Gulf Bank	1,016.0	30.3	6.8%
10- Ahli United Bank - Kuwait	944.9	21.1	14.4%
<b>Total</b>	<b>18,834</b>	<b>19.60</b>	<b>10.2%</b>

\*: ROE is calculated based on TTM 1H-2014 net profit & shareholders' equity as of 30-June-14

### Top Movers and Most Active Stocks

Today's Top % Gainers	Close (KWD)	Change (KWD)	Percent Change
Kuwait Building Materials Manufacturing Co.	0.405	0.050	14.1%
Hilal Cement Company	0.142	0.010	7.6%
Contracting & Marine Services Co.	0.136	0.008	6.3%
Zima Holding Co.	0.178	0.010	6.0%
Bayan Investment Co.	0.091	0.005	5.8%

Today's Top % Losers	Close (KWD)	Change (KWD)	Percent Change
Real Estate Asset Management Co.	0.108	(0.010)	(8.5%)
Kuwait Business Town Real Estate Co.	0.053	(0.004)	(7.0%)
Sanam Real Estate Co.	0.062	(0.004)	(6.1%)
Commercial Bank of Kuwait	0.660	(0.040)	(5.7%)
Gulf Franchising Co.	0.076	(0.004)	(5.0%)

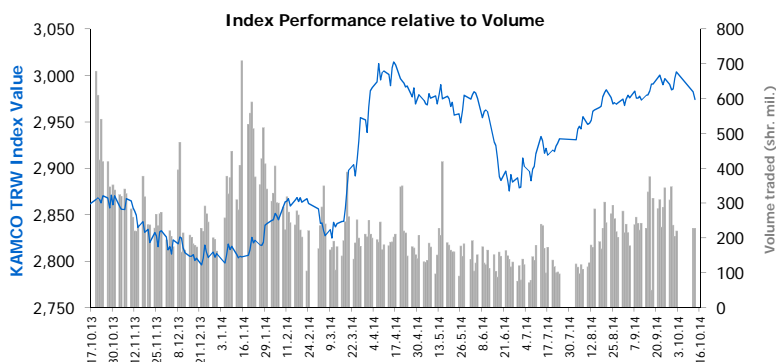
Today's Most Active by Volume	Close (KWD)	Change (KWD)	Volume (Shares)
Ithmar Bank B.S.C	0.054	0.002	17,881,715
National Ranges Co. (MAYADEEN)	0.049	0.001	14,773,122
Bayan Investment Co.	0.091	0.005	11,978,592
Al-Madina for Finance & Investment Co.	0.042	0.001	11,158,557
Al-Mal Investment Co.	0.048	0.000	9,743,565

Source: KAMCO Research

### Market Capitalization - Sectors' Return

	Market Cap. (KWD Mn)	DTD % Chg	MTD % Chg	YTD % Chg
Kuwaiti Stock Exchange	32,837.7	(0.4%)	(0.6%)	5.6%
Oil & Gas	454.1	0.2%	(1.8%)	3.4%
Basic Materials	731.0	(1.5%)	(4.3%)	5.9%
Industrials	3,084.5	(0.1%)	(1.0%)	11.2%
Consumer Goods	1,345.8	=	0.1%	19.3%
Health Care	200.2	=	(1.1%)	(6.2%)
Consumer Services	834.4	(0.7%)	(2.4%)	(5.8%)
Telecommunications	3,620.5	(1.2%)	(1.5%)	(7.6%)
Banks	16,024.7	(0.3%)	0.0%	9.5%
Insurance	366.4	=	0.0%	7.3%
Real Estate	2,590.2	(0.1%)	(0.7%)	(2.6%)
Financial Services	3,523.4	(0.3%)	(1.1%)	5.0%
Technology	62.4	(0.6%)	0.6%	(9.2%)

Market Breadth	27	58	108		
Benchmark Return	Closing Value	DTD Chg	MTD % Chg	YTD % Chg	
KAMCO TRWI	2,974.12	(8.1)	(0.3%)	(0.4%)	5.9%
KSE Price Index	7,557.20	(12.9)	(0.2%)	(0.8%)	0.1%
KSE Weighted Index	491.73	(2.0)	(0.4%)	(0.5%)	8.6%
Kuwait 15 Index	1,202.09	(1.9)	(0.2%)	(0.1%)	12.5%
Market Cap (KWD Mn)	32,838	(130.8)	(0.4%)	(0.6%)	5.6%



### Market Trading Data and Volatility

Trading Indicators	Today's Value	DTD Chg	DTD % Chg	Average Daily YTD 2014	YTD 2013
Volume (Shrs Mn)	227.4	0.1	0.0%	223.8	576.8
Value Traded (KWD Mn)	27.3	(0.1)	(0.4%)	25.5	50.0
No. of Trades	5,332	429.0	8.7%	4,848	9,560

Market Volatility**	Volatility Since January:				
	2014	2013	2012	2011	2010
KAMCO TRW Index	5.2%	5.1%	5.2%	6.7%	7.5%
KSE Price Index	7.3%	10.1%	9.4%	9.2%	9.3%
KSE Weighted Index	7.4%	7.4%	7.5%	9.4%	10.4%

\*\* Annualized Standard Deviation of Daily Returns

Today's Most Active by Value	Close (KWD)	Change (KWD)	Value (KWD)
Kuwait Finance House	0.830	0.000	4,068,452
ZAIN	0.650	(0.010)	2,454,215
National Bank of Kuwait	0.990	0.000	2,178,690
Bayan Investment Co.	0.091	0.005	1,070,786
Agility	0.890	0.010	990,889

Monday, October 13, 2014

## KUWAIT 15 INDEX Data

Kuwait 15 Index Constituents	Closing Price			Market Capitalization			Valuation Multiples				ROE	YTD-14 Price Return	YTD-14 Trading Indicators	
	KWD	DTD Chg. (KWD)	D-T-D Return	KWD Mn	Weight in Kuwait 15	Weight in KSE	P/E (X)	P/BV (X)	Yield	Beta			Turnover (Mn Shrs)	Value (KWD Mn)
== National Bank of Kuwait	0.990	0.000	0.00%	4,752	23.2%	14.5%	18.7	1.89	2.8%	1.48	10.1%	20.3%	433.8	422.1
== Kuwait Finance House	0.830	0.000	0.00%	3,595	17.6%	10.9%	29.8	2.07	1.4%	1.50	7.0%	19.1%	455.8	380.3
▼ Zain	0.650	(0.010)	(1.52%)	2,809	13.7%	8.6%	12.9	1.83	6.9%	1.61	14.2%	1.4%	339.4	224.4
== Kuwait Food Co. (Americana)	3.080	0.000	0.00%	1,238	6.1%	3.8%	23.2	3.73	2.7%	0.81	16.1%	25.6%	13.9	38.4
== Kuwait Projects Co. (Holding)	0.720	0.000	0.00%	1,061	5.2%	3.2%	24.3	2.05	2.6%	1.59	8.4%	25.3%	174.6	124.9
▲ Agility (PWC Logistics)	0.890	0.010	1.14%	1,027	5.0%	3.1%	21.1	1.19	4.1%	1.91	5.6%	41.6%	340.3	268.5
▼ Gulf Bank	0.350	(0.005)	(1.41%)	1,016	5.0%	3.1%	30.3	2.05	0.0%	0.90	6.8%	(1.8%)	145.6	52.9
▲ Boubyan Bank	0.520	0.010	1.96%	1,022	5.0%	3.1%	51.8	3.66	0.0%	1.48	7.1%	(0.6%)	61.1	32.2
== Ahli United Bank - Kuwait	0.660	0.000	0.00%	945	4.6%	2.9%	21.1	3.04	2.5%	1.03	14.4%	4.6%	36.3	25.7
== Burgan Bank	0.540	0.000	0.00%	937	4.6%	2.9%	36.7	1.74	1.2%	1.34	4.7%	6.7%	274.6	150.7
== Mabane Co.	1.060	0.000	0.00%	783	3.8%	2.4%	17.6	3.29	2.2%	1.40	18.7%	1.6%	87.8	95.2
== Boubyan Petrochemicals	0.740	0.000	0.00%	377	1.8%	1.1%	13.3	1.41	5.7%	1.38	10.6%	26.5%	43.1	31.8
== Kuwait International Bank	0.320	0.000	0.00%	332	1.6%	1.0%	20.6	1.46	2.0%	1.46	7.1%	10.8%	114.6	35.4
== National Industries Group	0.226	0.000	0.00%	307	1.5%	0.9%	39.7	0.72	0.0%	1.99	1.8%	1.5%	281.4	68.2
▼ Qurain Petrochemical Industries Co.	0.232	(0.008)	(3.33%)	255	1.2%	0.8%	10.5	0.87	4.1%	1.15	8.3%	9.0%	97.5	24.2
<b>Subtotal- Kuwait 15 Index</b>	<b>1,202.09</b>	<b>(1.92)</b>	<b>-0.16%</b>	<b>20,457</b>	<b>100%</b>	<b>62%</b>	<b>20.8</b>	<b>1.94</b>	<b>2.79%</b>		<b>9.3%</b>	<b>12.5%</b>	<b>2,900</b>	<b>1,975</b>
<b>Remaining of the Market</b>				<b>12,381</b>		<b>38%</b>	<b>20.2</b>	<b>1.03</b>	<b>3.29%</b>		<b>5.1%</b>		<b>38,952</b>	<b>2,794</b>

Source: KAMCO Research

**Kuwait Stock Exchange Daily Bulletin**

Monday, October 13, 2014

Company	Reuters Ticker	Valuation Multiples				Price (KWD)		MKT Cap (KWD Mn.)	52 Weeks High (KWD)	52 Weeks Low (KWD)	YTD-14 Return #	Daily Trading Data		YTD-14	
		Trailing P/E (X)	Trailing P/BV (X)	Dividend Yield	Beta	Closing	DTD Change					Volume (Shrs.)	Value (KWD)	Capital Turnover	ROE
▲ Contracting & Marine Services Co.	MARI.KW	16.7	0.67	0.00%	0.56	0.136	0.008	31.2	0.190	0.110	(19.8%)	49,200	6,691	1.4%	4.0%
= IKARUS Petroleum Industries Co.	IKAR.KW	13.8	0.89	4.98%	0.95	0.190	0.000	149.6	0.200	0.160	27.8%	182,242	34,595	12.4%	6.4%
▼ Al-Safat Energy Holding Co.	SENE.KW	NM	0.50	0.00%	1.34	0.034	(0.001)	20.2	0.055	0.033	(31.6%)	2,369,864	78,790	137.1%	NM
▼ Independent Petroleum Group	IPGK.KW	11.4	0.85	6.33%	0.67	0.450	(0.005)	68.5	0.480	0.370	17.1%	25,000	11,250	1.1%	7.4%
= National Petroleum Services Co.	NAPS.KW	11.3	2.06	5.96%	0.39	0.570	0.000	32.8	0.620	0.495	18.6%	0	0	22.5%	18.2%
= The Energy House Co.	ENER.KW	NM	1.10	0.00%	0.78	0.087	0.000	65.3	0.120	0.078	(17.9%)	0	0	3.8%	NM
▲ Gulf Petroleum Investment	GPIK.KW	9.7	0.83	0.00%	1.09	0.100	0.001	35.8	0.116	0.070	29.6%	2,695,377	270,538	287.9%	8.5%
= Burgan Co. for Drilling, Tdg. & Maint. *	ABAR.KW	23.7	0.88	0.00%	0.60	0.242	0.000	50.7	0.242	0.176	3.4%	0	0	1.1%	3.7%
<b>Oil &amp; Gas</b>		<b>28.3</b>	<b>0.88</b>	<b>3.03%</b>				<b>454.1</b>			<b>3.4%</b>	<b>5,321,683</b>	<b>401,864</b>		<b>3.1%</b>
▼ Kuwait Foundry Co.	KFDC.KW	23.2	0.97	2.86%	0.50	0.350	(0.015)	53.9	0.425	0.305	(8.9%)	68,200	24,313	4.6%	4.2%
= Boubyan Petrochemicals Co.*	BPCC.KW	13.3	1.41	5.71%	1.38	0.740	0.000	376.9	0.800	0.580	26.5%	31,768	23,623	8.5%	10.6%
= Al Kout for Industrial Projects Co.	ALKK.KW	7.9	1.78	7.84%	0.05	0.510	0.000	45.0	0.550	0.550	0.0%	0	0	0.0%	22.6%
▼ Qurain Petrochemical Industries Co. *	ALQK.KW	10.5	0.87	4.14%	1.15	0.232	(0.008)	255.2	0.275	0.214	9.0%	192,812	45,677	8.9%	8.3%
<b>Basic Materials</b>		<b>12.1</b>	<b>1.14</b>	<b>5.08%</b>				<b>731.0</b>			<b>5.9%</b>	<b>292,780</b>	<b>93,613</b>		<b>9.5%</b>
▼ Specialities Group Holding Co.	SPEC.KW	10.4	0.73	3.87%	NA	0.172	(0.006)	25.8	0.208	0.154	(14.8%)	75,500	12,686	6.7%	7.0%
▲ Kuwait Cement Co.	KCEM.KW	18.5	1.72	3.85%	1.12	0.455	0.005	333.7	0.455	0.360	29.6%	900	410	0.9%	9.3%
= Refrigeration Industries & Storage Co.	REFR.KW	10.0	1.50	2.79%	0.65	0.355	0.000	31.7	0.360	0.305	15.9%	0	0	1.1%	15.0%
▼ Gulf Cable & Electrical Ind. Co.	CABL.KW	17.7	1.16	3.80%	0.91	0.790	(0.010)	165.8	0.980	0.740	(3.5%)	5,918	4,702	7.9%	6.5%
= Heavy Eng'g Ind. & Shipbuilding Co.	SHIP.KW	12.2	0.75	0.00%	0.97	0.150	0.000	25.7	0.168	0.138	3.6%	14,000	2,100	10.3%	6.1%
▼ Kuwait Portland Cement Co.	PCEM.KW	14.3	1.92	6.16%	1.15	1.380	(0.060)	125.4	1.440	1.220	4.6%	8,134	11,348	5.1%	13.5%
= Shuaiba Industrial Co.	PAPE.KW	14.0	0.99	4.47%	0.46	0.250	0.000	16.1	0.355	0.232	7.8%	0	0	31.4%	7.1%
= Metal & Recycling Co.	MRCK.KW	NM	0.57	0.00%	1.13	0.116	0.000	9.6	0.154	0.100	(13.4%)	0	0	15.7%	NM
▼ ACICO Industries Co.	ACIC.KW	10.8	0.96	2.96%	0.94	0.320	(0.010)	83.6	0.370	0.270	17.3%	265,541	84,141	3.0%	8.9%
= Gulf Glass Manufacturing Co.	GGMC.KW	18.8	2.07	4.08%	0.33	0.700	0.000	31.1	0.750	0.530	14.2%	0	0	0.5%	11.0%
▲ Hilal Cement Co.	HCCK.KW	67.6	0.67	4.93%	0.14	0.142	0.010	9.9	0.250	0.100	(32.3%)	61	9	0.3%	1.0%
= Kuwait Packing Materials Co.	KPAK.KW	15.9	1.86	4.17%	0.23	0.600	0.000	25.4	0.600	0.460	33.3%	0	0	0.1%	11.7%
▲ Kuwait Building Materials Co.	KBMM.KW	19.5	2.25	1.18%	0.10	0.405	0.050	12.3	0.405	0.150	43.1%	15	6	0.2%	11.6%
▲ National Industries Co.	NIBM.KW	23.2	0.94	0.00%	0.50	0.222	0.006	78.4	0.255	0.192	15.6%	30,868	6,544	2.2%	4.0%
= Equipment Holding Co.	EQUI.KW	67.6	1.09	0.00%	1.22	0.144	0.000	19.6	0.216	0.104	0.0%	631,300	89,038	196.8%	1.6%
= National Co. for Consumer Industries	NCCI.KW	46.6	0.99	0.00%	0.33	0.080	0.000	7.2	0.164	0.062	(42.9%)	0	0	0.5%	2.1%
= Kuwait Gypsum Manufacturing & Tdg. Co.	GYPK.KW	30.3	1.13	0.00%	0.03	0.170	0.000	5.1	0.186	0.110	(5.6%)	0	0	0.0%	3.7%
▼ Salbookh Trading Co.	SALB.KW	NM	1.02	0.00%	0.63	0.092	(0.002)	9.7	0.118	0.057	(13.2%)	593,286	55,027	188.1%	0.8%
▲ Agility (PWC Logistics)	AGLT.KW	21.1	1.19	4.06%	1.91	0.890	0.010	1,027.2	0.920	0.640	41.6%	1,113,372	990,889	29.5%	5.6%
= Educational Holding Group*	EDUK.KW	11.8	1.16	3.69%	0.58	0.162	0.000	39.7	0.180	0.132	5.0%	0	0	0.5%	9.8%
▼ National Cleaning Co.	CLEA.KW	30.9	0.68	0.00%	1.09	0.104	(0.002)	26.0	0.152	0.100	(20.8%)	149,900	15,590	19.0%	2.2%
▲ City Group Co.	TTGC.KW	7.7	1.98	7.95%	0.38	0.440	0.010	49.7	0.530	0.390	(5.0%)	11	5	0.3%	25.8%
▼ Kuwait & Gulf Link Transport Co.	KGLK.KW	NM	0.45	0.00%	1.57	0.084	(0.001)	22.2	0.120	0.077	(16.0%)	162,529	13,689	42.6%	NM
▼ Kuwait Co. For Process Plant Const. & Cont.	KCPC.KW	8.9	0.91	3.53%	0.39	0.265	(0.005)	19.3	0.395	0.260	(17.6%)	79,300	21,015	8.5%	10.3%
▲ Human Soft Holding Co.	HUMN.KW	8.5	1.94	7.98%	0.12	0.410	0.005	50.1	0.550	0.218	106.0%	50	21	1.7%	22.8%
= Nafais Holding Co.	NAFA.KW	5.4	0.64	0.00%	0.19	0.093	0.000	39.2	0.106	0.073	1.1%	0	0	6.9%	11.9%
▼ Safwan Trading & Contracting Co.	SAFW.KW	11.1	1.86	7.32%	0.14	0.440	(0.005)	22.0	0.670	0.410	2.8%	2,789	1,227	1.1%	16.8%
▼ Gulf Franchising Co.	GFCI.KW	NM	0.86	0.00%	0.83	0.076	(0.004)	2.5	0.108	0.060	(18.3%)	20,508	1,594	17.5%	NM
▲ National Ranges Co.	MAYA.KW	NM	0.43	0.00%	1.49	0.049	0.001	13.6	0.066	0.014	(44.5%)	14,773,122	709,275	739.9%	NM
▼ Combined Group Contracting Co.	CGCK.KW	32.8	2.44	7.93%	0.73	0.840	(0.010)	93.8	1.340	0.840	(28.4%)	6,150	5,166	1.9%	7.4%
▼ Mishref General Trading & Contracting Co.	MTCC.KW	NM	0.94	0.00%	0.57	0.090	(0.001)	36.0	0.136	0.081	(13.5%)	260,000	23,151	20.3%	NM
= United Projects Group	UPAC.KW	10.9	1.96	9.40%	0.38	0.790	0.000	65.2	0.830	0.600	7.2%	0	0	0.6%	17.9%
▼ ALAFCO Aviation Lease & Finance Co.*	ALAF.KW	12.4	1.05	1.96%	1.26	0.255	(0.010)	198.8	0.295	0.246	(8.8%)	1,186,159	304,762	7.8%	8.5%
= Mubarrad Transport Co.	MBRD.KW	7.7	0.76	0.00%	1.24	0.086	0.000	14.1	0.093	0.060	14.7%	903,903	76,151	138.5%	9.8%
▼ KGL Logistics Co.	LOGK.KW	12.8	0.93	7.42%	1.16	0.122	(0.002)	73.9	0.285	0.122	(27.8%)	146,797	17,989	20.7%	7.3%
▼ Sharjah Cement Co.	SCEM.KW	10.3	0.49	3.96%	0.68	0.096	(0.001)	53.1	0.112	0.089	11.8%	90,000	8,635	24.5%	4.7%

**Kuwait Stock Exchange Daily Bulletin**

Monday, October 13, 2014

Company	Reuters Ticker	Valuation Multiples				Price (KWD)		MKT Cap (KWD Mn.)	52 Weeks High (KWD)	52 Weeks Low (KWD)	YTD-14 Return #	Daily Trading Data		YTD-14 Capital Turnover	ROE
		Trailing P/E (X)	Trailing P/BV (X)	Dividend Yield	Beta	Closing	DTD Change					Volume (Shrs.)	Value (KWD)		
= Gulf Cement Co.	GCEM.KW	27.9	1.00	3.51%	0.95	0.114	0.000	93.6	0.142	0.099	11.2%	2,500,000	280,840	26.1%	3.6%
= Umm Al-Qaiwain Cement Industries Co.	QCCEM.KW	22.3	0.66	7.00%	0.81	0.100	0.000	36.3	0.118	0.088	14.6%	1,477,200	147,708	39.8%	3.0%
= Fujairah Cement Industries Co.	FCEM.KW	NM	0.42	0.00%	0.85	0.085	0.000	30.2	0.099	0.081	0.0%	215,000	18,217	83.0%	0.3%
▼ Ras-Al-Khaimah for White Cement Co.	RKWC.KW	20.8	0.92	2.87%	1.11	0.126	(0.004)	61.8	0.148	0.112	14.0%	101,505	12,773	3.9%	4.4%
<b>Industrials</b>		<b>17.3</b>	<b>1.13</b>	<b>3.92%</b>				<b>3,084.5</b>			<b>11.2%</b>	<b>24,813,818</b>	<b>2,914,706</b>		<b>6.5%</b>
= Kuwait Slaughter House Co.	KSHK.KW	8.8	1.81	10.71%	0.07	0.226	0.000	7.0	0.265	0.216	6.0%	0	0	0.4%	20.6%
= National Slaughter Houses Co.	NSHK.KW	12.4	1.28	8.64%	0.06	0.162	0.000	4.7	0.172	0.126	20.5%	0	0	1.5%	10.3%
= Palms Agro Production Co.	PAPK.KW	10.9	0.78	8.05%	0.37	0.124	0.000	6.5	0.156	0.100	6.3%	600	74	0.6%	7.2%
= Livestock Transport & Trading Co.	CATT.KW	NM	1.15	0.00%	0.67	0.192	0.000	41.6	0.280	0.184	(23.2%)	0	0	10.5%	NM
= Danah Alsafat Foodstuff Co.	DANK.KW	NM	0.75	0.00%	1.52	0.089	0.000	25.7	0.106	0.063	3.5%	382,418	33,594	146.0%	NM
= Kuwait United Poultry Co.	POUL.KW	8.1	1.23	5.05%	0.59	0.192	0.000	22.2	0.206	0.128	27.8%	0	0	2.9%	15.2%
= Kuwait Food Co. (Americana)	FOOD.KW	23.2	3.73	2.69%	0.81	3.080	0.000	1,238.2	3.260	2.300	25.6%	0	0	3.5%	16.1%
<b>Consumer Goods</b>		<b>27.3</b>	<b>3.09</b>	<b>2.68%</b>				<b>1,345.8</b>			<b>19.3%</b>	<b>383,018</b>	<b>33,669</b>		<b>11.3%</b>
= AL-Mowasat Healthcare Co.	MHCK.KW	9.8	0.92	5.43%	0.08	0.184	0.000	17.8	0.200	0.160	21.3%	0	0	0.4%	9.4%
= Advanced Technology Co.	ATCK.KW	31.8	3.57	1.61%	NA	0.930	0.000	139.5	0.940	0.760	3.8%	0	0	7.9%	11.2%
= Yiacco Medical Co.	YIAC.KW	22.0	1.21	0.00%	0.93	0.236	0.000	42.9	0.365	0.230	(30.2%)	0	0	6.4%	5.5%
<b>Health Care</b>		<b>24.6</b>	<b>2.13</b>	<b>1.61%</b>				<b>200.2</b>			<b>(6.2%)</b>	<b>0</b>	<b>0</b>		<b>8.7%</b>
= Kuwait National Cinema Co.	KCIN.KW	12.6	1.99	4.30%	0.23	1.120	0.000	113.2	1.300	0.850	18.1%	0	0	0.7%	15.7%
= Kuwait Hotels Co.	KHOT.KW	34.0	1.53	3.05%	0.13	0.160	0.000	9.2	0.160	0.108	10.0%	0	0	1.7%	4.5%
▲ Sultan Center Food Products Co.	SCFK.KW	20.8	1.57	0.00%	1.88	0.110	0.004	63.7	0.118	0.088	11.1%	1,250,100	136,472	21.8%	7.6%
= Kuwait Cable Vision Co.	KWTV.KW	NM	2.02	0.00%	0.51	0.046	0.000	1.4	0.080	0.037	(24.6%)	0	0	4.5%	NM
= EYAS for Higher & Technical Education Co.*	EYAS.KW	8.8	1.33	5.00%	0.11	0.300	0.000	34.7	0.355	0.280	53.1%	0	0	2.4%	15.1%
▼ IFA Hotels & Resorts Co.*	IFAH.KW	NM	1.71	0.00%	0.58	0.200	(0.010)	127.1	0.425	0.178	(29.8%)	496	99	7.8%	NM
▼ Oula Fuel Marketing Co.	OULA.KW	17.5	1.08	0.00%	0.46	0.154	(0.002)	58.8	0.230	0.150	(25.1%)	74,803	11,601	7.3%	6.2%
▲ Kuwait Resorts Co.	MUNK.KW	6.3	0.99	4.52%	0.58	0.104	0.002	19.5	0.112	0.085	23.9%	316,300	32,263	120.9%	15.6%
▼ Jazeera Airways Co.	JAZK.KW	13.0	2.49	3.45%	0.81	0.435	(0.005)	182.7	0.540	0.400	(9.1%)	36,122	15,863	10.5%	19.1%
= Soor Fuel Marketing Co.	SOOR.KW	16.3	1.13	0.00%	0.60	0.152	0.000	58.6	0.200	0.140	(15.1%)	40,684	6,149	4.9%	7.0%
▼ Future Kid Entertainment and R.E Co.	KIDK.KW	14.4	0.62	6.12%	0.10	0.108	(0.002)	12.6	0.128	0.090	(2.5%)	15,078	1,628	0.8%	4.3%
= Al-Nawadi Holding Co.	ALNA.KW	10.0	1.06	0.00%	0.11	0.150	0.000	24.8	0.150	0.106	33.1%	0	0	1.8%	10.6%
▼ Al Rai Media Group Co.	ALRA.KW	5.5	0.91	3.55%	0.75	0.140	(0.002)	32.6	0.164	0.110	5.1%	5,000	700	8.4%	16.4%
▲ Zima Holding Co.	ZIMAH.KW	NM	1.70	0.00%	NA	0.178	0.010	17.8	0.194	0.089	41.3%	20	4	0.4%	NM
= United Foodstuff Industries Group Co.	UFIG.KW	NM	2.22	0.00%	0.01	0.295	0.000	9.8	0.300	0.290	(1.7%)	0	0	0.2%	NM
= Kout Food Group	KOUT.KW	12.0	1.87	3.23%	0.15	0.930	0.000	68.0	0.930	0.700	29.7%	0	0	2.2%	15.6%
<b>Consumer Services</b>		<b>17.2</b>	<b>1.56</b>	<b>2.18%</b>				<b>834.4</b>			<b>(5.8%)</b>	<b>1,738,603</b>	<b>204,780</b>		<b>9.1%</b>
▼ Zain	ZAIN.KW	12.9	1.83	6.93%	1.61	0.650	(0.010)	2,809.0	0.730	0.610	1.4%	3,719,873	2,454,215	7.9%	14.2%
= National Mobile Telecom Co.	OORE.KW	10.8	1.01	8.07%	1.20	1.540	0.000	776.2	2.000	1.420	(5.4%)	20,719	31,907	0.9%	9.4%
▼ Hits Telecom Holding Co.	HITS.KW	NM	0.58	0.00%	0.92	0.049	(0.001)	35.3	0.076	0.040	(25.8%)	3,492,850	173,211	47.4%	NM
<b>Telecommunications</b>		<b>12.7</b>	<b>1.53</b>	<b>7.11%</b>				<b>3,620.5</b>			<b>(7.6%)</b>	<b>7,233,442</b>	<b>2,659,333</b>		<b>12.1%</b>
= National Bank of Kuwait	NBKK.KW	18.7	1.89	2.83%	1.48	0.990	0.000	4,751.7	1.020	0.870	20.3%	2,200,689	2,178,690	9.0%	10.1%
▼ Gulf Bank	GBKK.KW	30.3	2.05	0.00%	0.90	0.350	(0.005)	1,016.0	0.400	0.330	(1.8%)	350,859	123,006	5.0%	6.8%
▼ Commercial Bank of Kuwait	CBKK.KW	32.1	1.66	0.95%	0.83	0.660	(0.040)	931.9	0.840	0.660	(0.0%)	19,894	13,130	0.3%	5.2%
▼ Ahli Bank of Kuwait	ABKK.KW	18.7	1.29	3.02%	0.73	0.430	(0.005)	696.2	0.495	0.410	0.7%	155,779	67,649	1.7%	6.9%
= Ahli United Bank - Kuwait	BKME.KW	21.1	3.04	2.48%	1.03	0.660	0.000	944.9	0.790	0.620	4.6%	96,569	63,696	2.5%	14.4%
= Kuwait International Bank	KIBK.KW	20.6	1.46	1.97%	1.46	0.320	0.000	331.9	0.330	0.285	10.8%	1,333,639	426,792	11.0%	7.1%
= Burgan Bank	BURG.KW	36.7	1.74	1.15%	1.34	0.540	0.000	937.3	0.600	0.495	6.7%	1,001,129	540,615	15.8%	4.7%
= Kuwait Finance House	KFIN.KW	29.8	2.07	1.36%	1.50	0.830	0.000	3,595.4	0.960	0.750	19.1%	4,895,836	4,068,452	10.5%	7.0%
▲ Boubyan Bank	BOUK.KW	51.8	3.66	0.00%	1.48	0.520	0.010	1,021.8	0.610	0.500	(0.6%)	308,218	158,744	3.1%	7.1%
= Warba Bank	WARB.KW	NM	2.88	0.00%	NA	0.265	0.000	265.0	0.375	0.255	(19.7%)	3,155,541	835,290	29.3%	NM
= Ahli United Bank - Bahrain	AUBK.KW	11.0	1.54	5.30%	0.61	0.228	0.000	1,368.7	0.246	0.192	23.6%	1,547,972	351,503	4.2%	14.0%
▲ Ithmaar Bank	ITHMR.KW	NM	1.06	0.00%	1.25	0.054	0.002	163.7	0.074	0.035	(15.6%)	17,881,715	944,173	40.2%	NM
<b>Banks</b>		<b>23.5</b>	<b>1.92</b>	<b>2.04%</b>				<b>16,024.7</b>			<b>9.5%</b>	<b>32,947,840</b>	<b>9,771,739</b>		<b>8.2%</b>

**Kuwait Stock Exchange Daily Bulletin**

Monday, October 13, 2014

Company	Reuters Ticker	Valuation Multiples				Price (KWD)		MKT Cap (KWD Mn.)	52 Weeks High (KWD)	52 Weeks Low (KWD)	YTD-14 Return #	Daily Trading Data		YTD-14	
		Trailing P/E (X)	Trailing P/BV (X)	Dividend Yield	Beta	Closing	DTD Change					Volume (Shrs.)	Value (KWD)	Capital Turnover	ROE
= Kuwait Insurance Co.	KINS.KW	16.1	1.06	5.84%	0.24	0.330	0.000	64.0	0.330	0.270	20.7%	0	0	0.4%	6.6%
= Gulf Insurance Group	GINS.KW	9.7	1.19	4.99%	0.24	0.590	0.000	110.4	0.620	0.520	12.7%	1,000	590	2.2%	12.3%
= Ahleiah Insurance Co.	AINS.KW	10.4	1.05	6.46%	0.21	0.495	0.000	99.0	0.510	0.460	9.8%	0	0	0.3%	10.1%
= Warba Insurance Co.	WINS.KW	13.2	0.52	4.63%	0.33	0.142	0.000	24.5	0.160	0.100	30.7%	45,000	6,390	5.3%	4.0%
= Kuwait Reinsurance Co.	KWRE.KW	19.9	0.70	5.32%	0.02	0.188	0.000	28.2	0.188	0.140	32.0%	0	0	0.3%	3.5%
= First Takaful Insurance Co.	FTIK.KW	NM	10.13	0.00%	0.19	0.093	0.000	9.3	0.146	0.085	(22.5%)	0	0	0.0%	NM
= Wethaq Takaful Insurance Co.	WETH.KW	13.7	0.60	0.00%	0.10	0.064	0.000	7.1	0.080	0.055	3.2%	0	0	126.8%	4.4%
= Bahrain Kuwait Insurance Co.	BKIK.KW	7.4	0.94	6.70%	0.01	0.335	0.000	24.0	0.000	0.000	0.0%	0	0	0.0%	12.6%
<b>Insurance</b>		<b>15.8</b>	<b>0.98</b>	<b>5.43%</b>				<b>366.4</b>			<b>7.3%</b>	<b>46,000</b>	<b>6,980</b>		<b>6.2%</b>
▼ Sokouk Holding Co.	SHCK.KW	10.0	0.67	0.00%	1.71	0.091	(0.001)	51.4	0.132	0.074	(17.5%)	3,130,143	284,156	81.3%	6.7%
▼ Kuwait Real Estate Co.	KREK.KW	10.4	0.62	6.24%	1.35	0.080	(0.001)	72.5	0.108	0.069	(12.4%)	4,962,833	397,046	90.8%	6.0%
= United Real Estate Co.	UREK.KW	14.4	0.67	7.55%	1.50	0.106	0.000	125.9	0.128	0.097	(3.4%)	87,848	9,316	3.4%	4.6%
▲ National Real Estate Co.	NREK.KW	8.8	0.81	0.00%	1.95	0.166	0.004	149.0	0.170	0.138	13.5%	1,712,880	279,468	28.3%	9.2%
= Salhia Real Estate Co.	SREK.KW	11.5	1.42	5.15%	0.43	0.375	0.000	192.3	0.405	0.340	(1.3%)	0	0	0.8%	12.4%
= Pearl of Kuwait Real Estate Co.	PEAR.KW	NM	0.53	0.00%	0.64	0.015	0.000	1.5	0.066	0.015	(48.3%)	28,650	446	83.5%	NM
= Tamdeen Real Estate Co.	TAMK.KW	18.8	0.99	2.44%	0.87	0.310	0.000	121.5	0.320	0.194	63.5%	0	0	11.5%	5.3%
= Ajial Real Estate Entertainment Co.	AREC.KW	NM	0.35	3.89%	0.46	0.230	0.000	40.6	0.230	0.192	13.8%	0	0	4.2%	NM
= Al Massaleh Real Estate Co.	MREC.KW	NM	0.51	0.00%	0.68	0.074	0.000	17.4	0.126	0.070	(19.6%)	0	0	5.4%	NM
= Arab Real Estate Co.	ARAB.KW	NM	0.42	0.00%	1.53	0.056	0.000	28.6	0.069	0.047	(6.7%)	1,858,614	103,682	57.0%	NM
= Union Real Estate Co.	UREC.KW	5.9	0.87	4.10%	0.33	0.158	0.000	31.8	0.178	0.102	52.8%	0	0	0.7%	14.7%
= AL-Enma'a Real Estate Co.*	ENMA.KW	9.6	0.63	0.00%	0.86	0.085	0.000	38.3	0.097	0.077	(1.2%)	237,249	19,837	25.9%	6.6%
= Mabanee Co.	MABK.KW	17.6	3.29	2.23%	1.40	1.060	0.000	783.1	1.240	0.970	1.6%	162,376	173,309	11.9%	18.7%
▲ Injazat Real Estate Development Co.	INJA.KW	NM	0.51	0.00%	1.25	0.080	0.001	27.7	0.106	0.069	(14.9%)	882,340	69,831	41.0%	NM
= Investors Holding Group Co.	INVK.KW	NM	0.64	0.00%	1.68	0.017	0.000	18.2	0.033	0.015	(32.0%)	0	0	225.9%	NM
▼ International Resorts Co.	IRCK.KW	NM	0.70	0.00%	1.55	0.056	(0.001)	8.7	0.102	0.049	(27.3%)	1,072,000	60,788	192.7%	NM
= The Commercial Real Estate Co.	TIJK.KW	14.4	0.65	6.24%	1.29	0.096	0.000	163.4	0.106	0.090	10.9%	526,285	50,527	22.6%	4.5%
▼ Sanam Real Estate Co.	SANK.KW	NM	0.66	0.00%	0.45	0.062	(0.004)	7.6	0.083	0.053	(10.1%)	24,800	1,538	96.5%	0.5%
= A'ayan Real Estate Co.	AYRE.KW	23.0	0.56	0.00%	1.18	0.104	0.000	41.2	0.110	0.085	14.3%	915,475	92,694	35.2%	2.4%
= Aqar Real Estate Investment Co.	AQAR.KW	10.1	0.78	5.89%	0.52	0.083	0.000	19.4	0.099	0.075	(6.4%)	0	0	1.0%	7.7%
= Kuwait Real Estate Holding Co.	ALAK.KW	NM	0.97	0.00%	1.02	0.040	0.000	7.5	0.077	0.034	(41.9%)	0	0	27.7%	NM
= MAZAYA Holding Co.	MAZA.KW	10.8	1.00	0.00%	1.24	0.136	0.000	93.6	0.144	0.099	39.5%	4,271,204	578,772	47.8%	9.3%
= Al Dar National Real Estate Co.	ADNC.KW	NM	1.21	0.00%	1.04	0.033	0.000	13.9	0.063	0.029	(37.7%)	6,967,915	228,924	191.2%	NM
= AL-Themar International Holding Co.*	THMR.KW	32.3	0.82	5.00%	0.53	0.100	0.000	101.3	0.110	0.070	(9.1%)	0	0	1.0%	2.5%
▼ Tijara Real Estate & Investment Co.	TIJA.KW	15.5	0.76	0.00%	0.54	0.068	(0.001)	26.1	0.087	0.056	(4.2%)	115,000	7,820	73.4%	4.9%
= Al TAMEER Real Estate Investment Co.	AMAR.KW	NM	0.51	0.00%	0.37	0.047	0.000	11.2	0.084	0.036	(21.2%)	722,116	33,291	122.5%	NM
= Arkan Al-Kuwait Real Estate Co. *	ARKK.KW	7.0	1.01	3.85%	0.30	0.128	0.000	30.6	0.138	0.108	7.5%	0	0	0.9%	14.5%
▼ Al-Argan International Real Estate Co.	ARGK.KW	13.0	0.66	3.85%	0.40	0.176	(0.002)	46.6	0.220	0.140	13.0%	15,000	2,640	3.2%	5.1%
= Abyaar Real Estate Development Co.	ABYR.KW	NM	0.60	0.00%	1.52	0.049	0.000	53.7	0.064	0.041	(10.2%)	4,292,701	206,217	102.4%	NM
= Munshaat Real Estate Projects Co.	MUNS.KW	2.2	0.63	3.38%	1.60	0.148	0.000	47.7	0.190	0.140	(1.9%)	1,037,860	153,003	85.1%	28.2%
= First Dubai For Real Estate Development	FIRST.KW	14.6	1.72	0.00%	1.23	0.097	0.000	97.0	0.138	0.071	(20.5%)	370,645	35,703	19.2%	11.8%
▼ Kuwait Business Town Real Estate Co.	KBTK.KW	4.2	0.52	0.00%	0.83	0.053	(0.004)	27.4	0.057	0.025	(14.1%)	6,208,880	337,963	171.9%	12.6%
▼ Real Estate Asset Management Co.	REAM.KW	17.8	0.72	6.45%	NA	0.108	(0.010)	11.3	0.146	0.099	8.7%	10,000	1,080	0.1%	4.1%
▼ MENA Real Estate Co. *	MENK.KW	NM	0.62	0.00%	0.93	0.046	(0.001)	8.9	0.065	0.040	(17.3%)	325,000	14,701	74.1%	NM
= Al Mudon International Real Estate Co.	ALMK.KW	13.5	0.67	0.00%	0.41	0.099	0.000	9.9	0.260	0.074	(36.5%)	2,686,682	264,980	611.7%	5.0%
= Real Estate Trade Centers Co.	MARA.KW	NM	0.27	0.00%	NA	0.048	0.000	5.5	0.076	0.039	(22.1%)	10,000	475	35.1%	NM
▼ Kuwait Remal Real Estate Co.	REMAL.KW	39.0	0.52	0.00%	NA	0.082	(0.001)	25.1	0.156	0.077	(22.2%)	1,228,678	102,020	112.7%	1.3%
= Mashaer Holding Co.	MASK.KW	13.9	0.74	8.15%	1.01	0.184	0.000	33.0	0.242	0.162	(12.7%)	30,240	5,504	5.7%	5.3%
<b>Real Estate</b>		<b>16.7</b>	<b>0.97</b>	<b>2.77%</b>				<b>2,590.2</b>			<b>(2.6%)</b>	<b>43,893,414</b>	<b>3,515,731</b>		<b>5.8%</b>
▼ Kuwait Investment Co.	KINV.KW	9.7	0.59	0.00%	1.07	0.142	(0.002)	78.3	0.180	0.128	7.6%	4,717	670	17.0%	6.1%
▼ Commercial Facilities Co.	FACI.KW	12.2	0.93	6.93%	0.88	0.285	(0.005)	153.0	0.300	0.265	10.9%	48,600	14,077	6.8%	7.6%
= Int'l Financial Advisors Co.	IFIN.KW	NM	0.55	0.00%	1.44	0.061	0.000	43.9	0.112	0.050	(38.4%)	5,711,298	343,287	177.9%	NM
▼ National Investment Co.	NINV.KW	24.8	0.84	2.80%	1.48	0.176	(0.002)	154.2	0.188	0.138	13.1%	5,433,033	951,614	19.2%	3.4%

**Kuwait Stock Exchange Daily Bulletin**

Monday, October 13, 2014

Company	Reuters Ticker	Valuation Multiples				Price (KWD)		MKT Cap (KWD Mn.)	52 Weeks High (KWD)	52 Weeks Low (KWD)	YTD-14 Return #	Daily Trading Data		YTD-14	
		Trailing P/E (X)	Trailing P/BV (X)	Dividend Yield	Beta	Closing	DTD Change					Volume (Shrs.)	Value (KWD)	Capital Turnover	ROE
= Kuwait Projects Co.(Holding)	KPRO.KW	24.3	2.05	2.59%	1.59	0.720	0.000	1,061.0	0.800	0.590	25.3%	154,432	111,190	11.9%	8.4%
▲ Coast Invest. & Development Co.	COAS.KW	NM	0.98	0.00%	1.42	0.080	0.002	50.0	0.086	0.040	21.2%	7,936,000	623,012	87.1%	0.1%
= The Securities House Co.	SECH.KW	NM	1.15	0.00%	0.76	0.092	0.000	62.6	0.116	0.065	(5.2%)	7,053,494	640,274	81.1%	NM
▼ Securities Group *	SGCK.KW	6.9	0.54	0.00%	0.79	0.124	(0.006)	31.7	0.140	0.100	15.5%	1,164	144	1.9%	7.9%
▼ Arzan Financial Group For Fin. & Invest.	ARZA.KW	13.4	0.45	0.00%	0.52	0.064	(0.001)	51.4	0.085	0.060	(20.0%)	472,500	30,247	9.7%	3.3%
= Kuwait Financial Centre	MARKZ.KW	13.5	0.80	6.28%	1.63	0.144	0.000	76.5	0.164	0.134	(1.3%)	152,230	21,923	1.9%	5.9%
▼ Kuwait & M.E. Financial Inv. Co.	KMEF.KW	59.6	0.58	0.00%	0.43	0.052	(0.002)	13.7	0.076	0.048	(24.6%)	312,513	16,088	7.8%	1.0%
▼ Al-Aman Investment Co.	AMAN.KW	21.3	0.98	0.00%	0.72	0.093	(0.003)	18.3	0.104	0.063	17.7%	3,426,326	321,442	115.5%	4.6%
= First Investment Co.	OLAK.KW	NM	0.81	0.00%	1.17	0.116	0.000	75.5	0.124	0.081	13.7%	1,661,964	191,529	26.3%	0.0%
= Al-Mal Investment Co.	MALK.KW	NM	1.13	0.00%	1.67	0.048	0.000	25.4	0.064	0.036	(14.3%)	9,743,565	467,685	99.9%	NM
▲ Gulf Investment House	GIHK.KW	NM	0.77	0.00%	1.05	0.077	0.001	12.6	0.091	0.022	(45.3%)	2,634,752	203,036	322.7%	NM
▲ A'ayan Leasing & Investment Co.	AAYA.KW	2.4	1.00	0.00%	1.35	0.082	(0.001)	67.3	0.090	0.060	22.4%	4,371,107	355,372	66.3%	41.4%
▲ Bayan Investment Co.	BAYK.KW	13.9	0.96	0.00%	1.88	0.091	0.005	35.7	0.138	0.064	(6.2%)	11,978,592	1,070,786	161.6%	6.9%
= Osoul Investment Co.	OSUL.KW	49.6	0.77	0.00%	1.08	0.080	0.000	15.1	0.096	0.068	5.3%	0	0	104.5%	1.6%
= Kuwait Finance & Investment Co.	KFSK.KW	10.7	0.62	0.00%	0.45	0.074	0.000	22.7	0.099	0.067	(20.4%)	0	0	4.0%	5.8%
= KIPCO Asset Mgt Co. (KAMCO)	KAMC.KW	11.4	0.85	3.78%	0.52	0.120	0.000	31.6	0.144	0.098	(8.8%)	0	0	2.3%	7.5%
▼ National International Holding Co.	NIHK.KW	10.2	0.43	7.03%	0.23	0.069	(0.001)	14.7	0.087	0.064	(8.0%)	35,000	2,415	126.9%	4.2%
▲ Housing Finance Co.	ISKN.KW	NM	0.65	0.00%	0.34	0.025	0.001	7.5	0.070	0.023	(30.6%)	2,288,920	56,097	253.0%	NM
▼ Al Madar Finance & Investment Co.	MADR.KW	2.4	0.59	0.00%	0.55	0.050	(0.002)	10.7	0.066	0.041	(7.4%)	159,192	8,055	24.1%	24.7%
▲ Al-Deera Holding	DEER.KW	NM	0.79	0.00%	0.79	0.023	0.001	17.1	0.076	0.021	(64.6%)	9,205,495	211,505	226.6%	NM
= Al Salam Group Holding Co.	SAGH.KW	47.5	0.79	0.00%	0.94	0.098	0.000	25.2	0.176	0.079	(33.8%)	890,660	86,704	86.0%	1.7%
= Ektitab Holding Co.	EKTT.KW	NM	0.67	0.00%	1.58	0.055	0.000	17.5	0.086	0.043	(25.7%)	3,962,501	214,706	130.4%	NM
▲ Al Qurain Holding Co.	QURK.KW	10.5	1.35	0.00%	1.43	0.042	0.001	12.5	0.053	0.026	9.1%	650,450	26,283	131.2%	12.9%
▲ Al Madina For Finance & Investment Co.	MADI.KW	NM	0.60	0.00%	1.34	0.042	0.001	17.1	0.058	0.033	1.2%	11,158,557	469,528	187.1%	NM
▼ NOOR Financial Investment Co.	NOOR.KW	6.4	0.89	0.00%	1.83	0.112	(0.002)	46.3	0.160	0.104	8.3%	394,551	44,083	51.5%	13.9%
= Tamdeen Investment Co.	TAMI.KW	16.4	0.83	2.42%	0.86	0.355	0.000	110.7	0.380	0.172	106.8%	0	0	14.3%	5.1%
= Kuwait Bahrain Int'l Exchange Co.	EXCH.KW	19.2	1.09	6.33%	0.39	0.158	0.000	7.3	0.204	0.148	(6.7%)	0	0	0.2%	5.7%
▲ Taiba Kuwaiti Holding Co.	DAMK.KW	6.6	0.65	0.00%	0.41	0.082	0.002	14.8	0.082	0.055	25.0%	22,500	1,805	1.7%	9.8%
▲ Kuwait Syrian Holding Co.	KSHC.KW	NM	0.48	0.00%	1.66	0.029	0.001	8.6	0.047	0.022	(32.1%)	4,759,394	136,597	126.0%	NM
= Strategia Investment Co.	STRAT.KW	6.5	0.77	0.00%	0.95	0.085	0.000	25.5	0.090	0.067	10.4%	0	0	0.1%	11.8%
= Kuwait China Investment Co.	KCIC.KW	62.0	0.60	0.00%	1.55	0.065	0.000	52.0	0.071	0.054	0.0%	691,751	44,276	11.6%	1.0%
= Manafae Investment Co.	MANF.KW	NM	0.74	0.00%	0.43	0.062	0.000	12.5	0.067	0.060	(7.5%)	0	0	3.9%	NM
▼ Gulf North Africa Holding Co.	GNAH.KW	30.6	0.58	0.00%	1.50	0.056	(0.001)	8.4	0.068	0.036	(5.1%)	3,017,807	170,122	311.8%	1.9%
▼ Amwal International Investment Co.	AMWA.KW	NM	0.52	0.00%	NA	0.047	(0.001)	8.5	0.068	0.042	(25.4%)	30,640	1,440	54.6%	0.2%
▼ Alimtiq Investment Group	ALIMK.KW	NM	0.47	0.00%	NA	0.072	(0.001)	81.6	0.087	0.061	(1.4%)	2,663,000	191,546	63.4%	NM
= Manazel Holding Co.	MANK.KW	52.9	1.50	0.00%	2.17	0.060	0.000	42.9	0.074	0.041	(3.2%)	7,073,099	423,949	128.6%	2.8%
= National Industries Group	NIND.KW	39.7	0.72	0.00%	1.99	0.226	0.000	307.3	0.275	0.218	1.5%	506,042	114,498	20.7%	1.8%
▼ United Industries Co.	UICK.KW	1.9	0.41	21.24%	1.37	0.106	(0.002)	52.5	0.190	0.106	(14.9%)	43,900	4,653	7.1%	22.1%
▼ Boubyan Int'l Industries Holding Co. *	BIHC.KW	NM	0.75	0.00%	1.67	0.089	(0.003)	26.7	0.122	0.082	(9.2%)	154,948	13,742	76.2%	NM
= Arabi Holding Group Co.	AGHC.KW	26.8	1.28	0.00%	0.88	0.190	0.000	28.5	0.204	0.168	0.9%	0	0	3.1%	4.8%
▼ Privatization Holding Co.	KPPC.KW	59.5	0.44	0.00%	1.47	0.065	(0.001)	48.0	0.081	0.056	(5.8%)	1,116,000	73,591	55.5%	0.7%
▲ Credit Rating & Collection Co.	TAHS.KW	NM	1.07	0.00%	0.20	0.082	0.002	13.5	0.142	0.052	(16.3%)	24,000	1,949	3.1%	NM
= Jeeran Holding Co.*	JEER.KW	7.2	0.44	0.00%	0.48	0.075	0.000	11.3	0.102	0.046	1.4%	12,707	953	23.3%	6.2%
= Egypt Kuwait Holding Co.	EKHK.KW	14.8	1.07	2.23%	0.80	0.275	0.000	268.3	0.320	0.240	12.3%	0	0	0.4%	7.3%
= Gulf Finance House	GFHK.KW	69.5	0.82	0.00%	1.55	0.039	0.000	123.3	0.068	0.031	(21.2%)	0	0	127.7%	1.2%
= Inovent	INOV.KW	NM	0.48	0.00%	1.07	0.078	0.000	22.3	0.093	0.066	2.6%	177,500	13,702	93.2%	NM
<b>Financial Services</b>		<b>38.9</b>	<b>0.92</b>	<b>1.98%</b>				<b>3,523.4</b>			<b>5.0%</b>	<b>110,134,901</b>	<b>7,674,576</b>		<b>2.4%</b>

**Kuwait Stock Exchange Daily Bulletin**

Monday, October 13, 2014

Company	Reuters Ticker	Valuation Multiples				Price (KWD)		MKT Cap (KWD Mn.)	52 Weeks High (KWD)	52 Weeks Low (KWD)	YTD-14 Return #	Daily Trading Data		YTD-14 Capital Turnover	ROE
		Trailing P/E (X)	Trailing P/BV (X)	Dividend Yield	Beta	Closing	DTD Change					Volume (Shrs.)	Value (KWD)		
= Automated Systems Co.	ASCK.KW	10.9	1.65	11.90%	0.40	0.420	0.000	16.8	0.500	0.370	17.5%	0	0	2.8%	15.1%
▼ Al Safat TEC Holding Co.	SAFH.KW	NM	0.94	0.00%	1.29	0.066	(0.001)	26.4	0.084	0.047	(16.5%)	329,800	21,882	43.4%	NM
= Future Communications Global Co.	FUTK.KW	13.0	0.82	11.03%	0.35	0.136	0.000	11.0	0.180	0.116	2.0%	0	0	9.1%	6.3%
= Hayat Communications Co.	HAYK.KW	NM	0.89	0.00%	0.52	0.088	0.000	8.1	0.110	0.073	(10.2%)	249,050	21,583	91.8%	NM
<b>Technology</b>		<b>NM</b>	<b>1.02</b>	<b>5.16%</b>				<b>62.4</b>			<b>(9.2%)</b>	<b>578,850</b>	<b>43,465</b>		<b>NM</b>
<b>Kuwait Stock Exchange</b>		<b>20.6</b>	<b>1.46</b>	<b>2.98%</b>				<b>32,837.7</b>			<b>5.6%</b>	<b>227,384,349</b>	<b>27,320,456</b>		<b>7.1%</b>

**Year-to-Date 2014 Top Movers & Most Active Stocks**

YTD Top % Gainers	Close (KWD)	Percent Change
Tamdeen Investment Co.	0.355	106.8%
Human Soft Holding Co.	0.410	106.0%
Tamdeen Real Estate Co.	0.310	63.5%
EYAS for Higher & Technical Education	0.300	53.1%
Union Real Estate Co.	0.158	52.8%

YTD Top % Losers	Close (KWD)	Percent Change
Al-Deera Holding Co.	0.023	(64.6%)
Pearl of Kuwait Real Estate Co.	0.015	(48.3%)
Gulf Investment House	0.077	(45.3%)
National Ranges Co.	0.049	(44.5%)
National Co. for Consumer Industries	0.080	(42.9%)

YTD Most Active by Volume	Close (KWD)	Volume (Shrs.)
Gulf Finance House	0.039	4,038,218,007
Investors Holding Group Co.	0.017	2,417,508,359
National Ranges Co. (MAYADEEN)	0.049	2,073,147,554
Al-Deera Holding Co.	0.023	1,686,902,701
International Financial Advisers	0.061	1,281,171,756

YTD Most Active by Value	Close (KWD)	Value (KWD)
National Bank of Kuwait	0.990	422,133,001
Kuwait Finance House	0.830	380,327,885
Agility	0.890	268,484,225
ZAIN	0.650	224,433,482
Gulf Finance House	0.039	199,075,993

Notes: NM: Not Meaningful. NA: Not Available. CP: Current Price, Trailing P/E is calculated based on TTM 1H-2014 net profits and current market cap. If calculated P/E is negative or greater than 80, it is represented by NM. Trailing P/BV is based on shareholders' equity as of 30-June-2014 and current market cap. Valuation multiples (P/E and P/BV) for companies that have not yet disclosed their 1H-2014 financials are based on TTM 1Q-2014 net profits and shareholder's equity as of March-14. Dividend Yield for individual stocks is based on the Full Year 2013 Dividends & current market cap, and the sector's average is a weighted average based on the market cap. Beta is calculated on daily share prices returns against KAMCO TRW Index for the companies which have a minimum trading history of two years. Sectors' Beta is calculated based on five year daily returns against KAMCO TRW Index. DTD: daily change. MTD: Beginning of Current Month to Date YTD: Beginning of Year to Date. KWD: Kuwaiti Dinars. \* Companies that vary in their fiscal years are treated separately to adjust for the recent results announcements. #YTD-14 return for individual stocks and sectors is calculated based on the change in market capitalization.

**Disclaimer:** This document and material contained herewith have been produced, compiled, and issued by KIPCO Asset Management Company KSC Closed (KAMCO). The Company has obtained the information used in this document from sources it believes to be reliable, but the issuer does not guarantee, neither its accuracy nor completeness, nor provides an independent verification of the material contained therein. KAMCO may, from time to time to the extent permitted by law, participate or invest in other financing transactions with the issuers of the securities, perform services for or solicit business from such issuer and/or have a position or effect transactions in the securities or options thereof. KAMCO may, to extent permitted by the applicable Kuwaiti law or other applicable laws and regulations, effect transactions in the securities before this material is published to recipients. The opinions and estimates expressed herein are those of the issuer and subject to change at any time without any prior notice. Accordingly, no representation or warranty, expressed or implied, is made as to and no reliance should be placed on the fairness, accuracy, completeness or correctness of the information and opinions contained in this document. KAMCO accepts no liability for any loss arising from the use of this document or its contents or otherwise arising in connection therewith. This document should not be relied upon or used in substitution for the exercise of sound judgment. KAMCO shall have no responsibility or liability whatsoever in respect of any inaccuracy in or omission from this or any other document prepared by KAMCO for, or sent by KAMCO to any entity, and any such entity shall be responsible for conducting its own scrutiny, investigation, and analysis of the information contained or referred to in this document and of evaluating the merits and risks involved in the securities forming the subject matter of this or other such document.

Opinions and estimates constitute KAMCO's judgment and are subject to change without prior notice. Past performance is not an indicator of future results. This document does not constitute an offer or invitation to subscribe for or purchase any securities, and neither this document nor anything contained herein shall form the basis of any contract or commitment whatsoever. This document is not an offer to sell or a solicitation to buy any securities. It is being furnished to the reader solely for his/her information and may not be redistributed inside Kuwait or by any jurisdiction outside Kuwait where this action is restricted by law. Entities who receive this report should make themselves aware of and adhere to any such restrictions. By accepting receipt of this report, the reader agrees to be bound by the foregoing limitations.