

MENA Markets Daily Report

August 10, 2015

	Country	Benchmark		Index Value	DTD Change	YTD 2015	FY 2014
MENA Countries							
In this Report...	Kuwait	KSE Price Index	▲	6,271.46	0.4%	(4.0%)	(13.4%)
Kuwait 2	Kuwait	KSE Weighted Index	▲	419.29	0.5%	(4.5%)	(3.1%)
Saudi Arabia 3	Kuwait	KSE - 15 Index	▲	1,011.30	0.3%	(4.6%)	(0.8%)
UAE - Dubai 4	Saudi Arabia	TADAWUL All Share Index	▲	8,699.17	0.5%	4.4%	(2.4%)
UAE - Abu Dhabi 5	UAE - Dubai	DFM General Index	▼	4,098.49	(0.6%)	8.6%	12.0%
Qatar 6	UAE - Abu Dhabi	ADX General Index	▼	4,808.95	(0.5%)	6.2%	5.6%
Bahrain 7	Qatar	QE 20 Index	▼	11,610.22	(1.4%)	(5.5%)	18.4%
Oman 8	Bahrain	Bahrain All Share	▲	1,333.15	0.0%	(6.5%)	14.2%
Egypt 9	Oman	MSM 30 Index	▼	6,407.86	(0.3%)	1.0%	(7.2%)
Jordan 10	Egypt	EGX 30	▼	8,011.06	(1.3%)	(10.3%)	31.6%
Tunisia 11	Jordan	ASE Index	▼	2,123.28	(0.3%)	(1.9%)	4.8%
Lebanon 12	Lebanon	KAMCO Beirut SE TRW Index	▼	1,104.35	(0.5%)	1.1%	3.5%
Morocco 13	Tunisia	Tunisia Index	▼	5,626.51	(0.4%)	10.5%	16.2%
Syria 14	Morocco	MASI	▼	9,716.22	(0.5%)	1.0%	5.6%
	Syria	DSE Weighted Index	▲	1,209.87	0.0%	(4.8%)	1.7%
Emerging Markets							
	China	SSE Composite Index	▲	3,744.21	2.3%	20.3%	52.9%
	Russia	RUSSIAN RTS INDEX (\$)	▲	832.47	1.5%	5.3%	(45.2%)
	India	SENSEX	▼	28,236.39	(0.2%)	3.3%	29.9%
	Brazil	BOVESPA Stock Index	▼	48,577.32	(2.9%)	(2.9%)	(2.9%)
	Mexico	BOLSA Index	▼	44,862.14	(0.1%)	4.0%	1.0%
	Korea	KOSPI Index	▼	2,010.23	(0.2%)	4.6%	(4.8%)
	Taiwan	TAIEX Index	▼	8,442.29	(0.1%)	(9.0%)	8.1%
Global Markets							
	World	MSCI World Index	▼	1,747.34	(0.3%)	2.2%	2.9%
	Asia	MSCI Asia Pacific	▲	141.08	0.1%	2.3%	(2.5%)
	Europe	DJ Stoxx 600	▼	397.07	(0.9%)	15.9%	4.4%
	Europe	FTSEurofirst 300	▼	1,574.37	(0.9%)	15.0%	4.0%
	Emerging Markets	MSCI EM Index	▲	885.07	0.0%	(7.4%)	(4.6%)
	U.S.A	S&P 500	▼	2,077.57	(0.3%)	0.9%	11.4%
	U.S.A	DJIA	▼	17,373.38	(0.3%)	(2.5%)	7.5%
	U.S.A	NASDAQ Composite	▼	5,043.54	(0.3%)	6.5%	13.4%
	UK	FTSE 100	▼	6,718.49	(0.4%)	2.3%	(2.7%)
	Germany	DAX	▼	11,490.83	(0.8%)	17.2%	2.7%
	Japan	NIKKEI 225	▲	20,724.56	0.3%	19.1%	7.1%
	Hong Kong	HANG SENG INDEX	▲	24,552.47	0.7%	4.0%	1.3%
Commodities							
	Oil	OPEC Crude	▼	47.10	(1.7%)	(9.4%)	(49.6%)
	Oil	Brent	▼	48.61	(1.8%)	(23.9%)	(45.6%)
	Oil	Kuwait	▼	46.34	(0.9%)	(12.0%)	(51.7%)
	Natural Gas	NYMEX Natural Gas (USD/MMBtu)	▼	2.80	(0.5%)	(5.7%)	(33.8%)
	Gold	Gold Spot \$/Oz	▲	1,094.41	0.2%	(7.7%)	(1.4%)

Investment Research Department
Kamcoird@kamconline.com

P.O.Box 28873, Safat 13149 Kuwait
Tel: (965) 1852626, Extn: 1153 / 1146
Fax: (965) 22492395

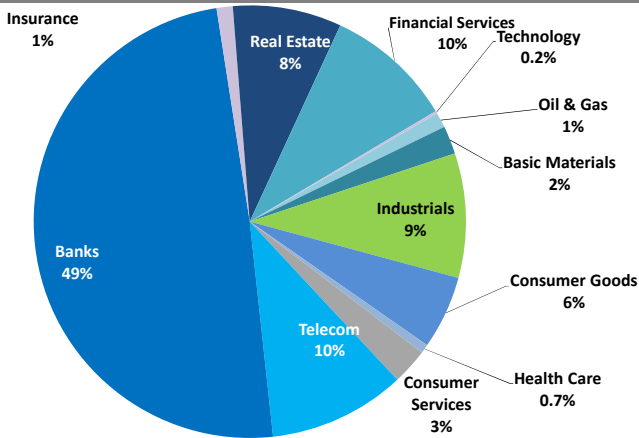
<http://www.kamconline.com>

KAMCO Investment Company - K.S.C
(Public)

Source: Bloomberg & KAMCO Research

Kuwait Market Daily Report

Sector Weight by Market Cap



Top 10 Companies by Market Capitalization

Company Name	Market Cap. (Mn KWD)	P/E (X)	ROE* (%)
1- National Bank of Kuwait	4,334.2	15.8	10.5%
2- Kuwait Finance House	2,954.3	22.7	7.7%
3- Zain	1,793.4	10.0	11.8%
4- Ahli United Bank - Bahrain	1,361.5	9.7	14.6%
5- Kuwait Food Co. (Americana)	1,149.7	22.4	13.6%
6- Kuwait Projects Co.	987.3	20.7	10.0%
7- Ahli United Bank - Kuwait	881.9	17.5	15.2%
8- Boubayan Bank	866.6	29.0	10.2%
9- Burgan Bank	850.5	13.7	9.9%
10- Commercial Bank of Kuwait	847.2	16.9	8.9%
Total	16,027	15.77	10.7%

*: ROE is calculated based on TTM 1Q-2015 net profit & shareholders' equity as of 31-March-15

Top Movers and Most Active Stocks

Today's Top % Gainers	Close (KWD)	Change (KWD)	Percent Change
Human Soft Holding Co.	1.200	0.100	9.1%
Kuwait Syrian Holding Co.	0.033	0.003	8.3%
National Mobile Telecommunication Co.	1.300	0.100	8.3%
Nafais Holding Co.	0.144	0.010	7.5%
National Petroleum Services Co.	0.590	0.040	7.3%

Today's Top % Losers	Close (KWD)	Change (KWD)	Percent Change
Jeeran Holding Co.	0.050	(0.005)	(8.3%)
Kuwait Cable Vision	0.032	(0.002)	(5.9%)
Future Communications Global Co.	0.112	(0.006)	(5.1%)
Kuwait Co. For Process Plant Const. & Cont.	0.222	(0.010)	(4.3%)
KAMCO Investment Co.	0.102	(0.004)	(3.8%)

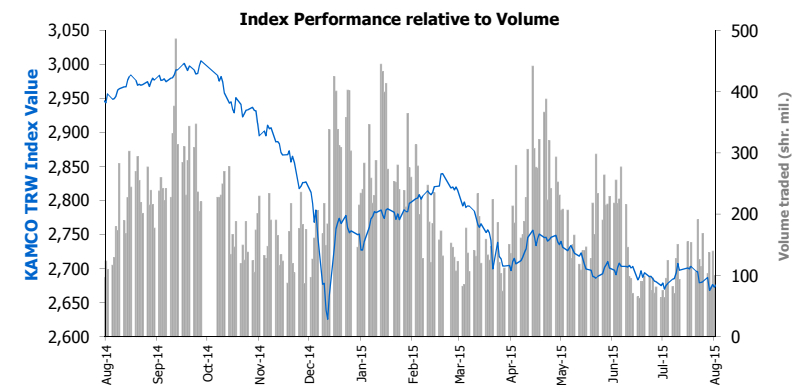
Today's Most Active by Volume	Close (KWD)	Change (KWD)	Volume (Shares)
Al Dar National Real Estate Co.	0.040	0.000	19,432,536
Al-Mal Investment Co.	0.043	0.001	3,410,715
Al-Madina for Finance & Investment Co.	0.056	0.000	3,408,385
kuwait Telecommunication Co.	0.910	(0.010)	3,337,370
National Ranges Co. (MAYADEEN)	0.029	(0.000)	3,253,494

Source: KAMCO Research

Market Capitalization - Sectors' Return

	Market Cap. (KWD Mn)	DTD ▲	DTD % Chg	MTD % Chg	YTD % Chg
Kuwaiti Stock Exchange	28,674.1	▲	0.5%	0.1%	(3.5%)
Oil & Gas	323.3	▲	0.6%	(0.5%)	(17.4%)
Basic Materials	601.1	▲	0.5%	(0.4%)	(7.4%)
Industrials	2,671.3	▲	0.3%	1.8%	(2.1%)
Consumer Goods	1,572.0	▲	1.3%	(0.5%)	29.1%
Health Care	190.8	=	0.0%	0.4%	3.8%
Consumer Services	777.1	▲	0.1%	1.1%	(0.1%)
Telecommunications	2,931.0	▲	3.1%	1.4%	(12.4%)
Banks	14,122.7	▲	0.3%	0.0%	(3.2%)
Insurance	344.2	▲	0.2%	(0.8%)	(3.5%)
Real Estate	2,333.2	▼	(0.4%)	(1.4%)	(2.5%)
Financial Services	2,753.3	▲	0.1%	(0.8%)	(8.6%)
Technology	54.1	▼	(1.2%)	(1.1%)	(4.0%)

Market Breadth	▲	45	▼	41	=	106
Benchmark Return	Closing	DTD	DTD	MTD	YTD	
	Value	Chg	% Chg	% Chg	% Chg	
KSE Price Index	6,271.46	22.1	0.4%	0.3%	(4.0%)	
KSE Weighted Index	419.29	2.3	0.5%	0.1%	(4.5%)	
Kuwait 15 Index	1,011.30	3.2	0.3%	(0.4%)	(4.6%)	
Market Cap (KWD Mn)	28,674	153.1	0.5%	0.1%	(3.5%)	



Market Trading Data and Volatility

Trading Indicators	Today's Value	DTD Chg	DTD % Chg	Average Daily YTD 2015	YTD 2014
Volume (Shrs Mn)	82.2	(17.7)	(17.7%)	186.6	214.7
Value Traded (KWD Mn)	10.3	1.5	16.5%	17.8	25.3
No. of Trades	2,449	(325.0)	(11.7%)	4,229	4,652

Market Volatility**	Volatility Since January:				
	2015	2014	2013	2012	2011
KSE Price Index	7.2%	9.4%	10.4%	9.8%	9.6%
KSE Weighted Index	8.1%	9.7%	8.9%	8.6%	9.8%

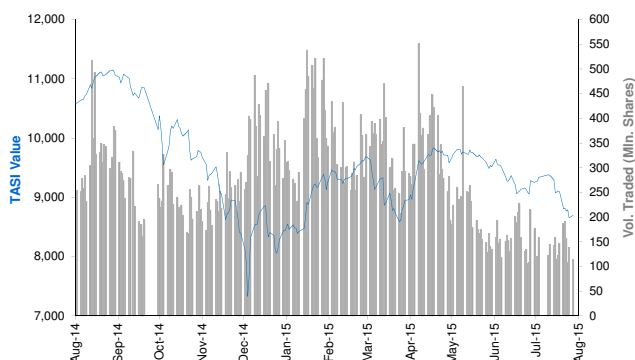
** Annualized Standard Deviation of Daily Returns

Today's Most Active by Value	Close (KWD)	Change (KWD)	Value (KWD)
kuwait Telecommunication Co.	0.910	(0.010)	3,022,993
Mezzan Holding Co.	1.120	(0.040)	1,278,586
Al Dar National Real Estate Co.	0.040	0.000	758,773
Agility	0.650	(0.010)	524,415
ZAIN	0.415	0.010	466,755

Saudi Tadawul Daily Report

August 10, 2015

Index Performance relative to Volume



Top 10 Stocks by Market Capitalization

	Market Cap. (SAR Mn)	P/E (X)	ROE* (%)
1- Saudi Basic Industries Corp	272,790	13.0	12.6%
2- Saudi Telecom	134,940	12.1	18.4%
3- National Commercial Bank	122,240	14.1	18.3%
4- Al-Rajhi Bank	102,570	15.4	15.8%
5- Saudi Electricity Co.	74,999	29.0	4.5%
6- Kingdom Holding Co.	73,451	NM	2.9%
7- Jabal Omar Development Company	67,865	NM	0.0%
8- AL-Marai Co.	56,478	33.1	15.4%
9- Samba Financial Group	52,200	10.3	13.0%
10- SABBB	48,180	11.2	16.5%

Subtotal 1,005,712 16.25 12.6%

* ROE is based on TTM 1Q-2015 Net Profit & Shareholders' Equity as of 31-March-15

Today's Top Movers and Most Active Stocks

Best Return Performers	Price (SAR)	Daily Return	Value (SAR 000's)
Saudi Cable Co.	9.45	6.0%	40,385
Al Alamiya for Cooperative Insurance Co.	69.61	5.8%	52,391
Allied Cooperative Ins. Group	27.67	4.7%	20,650
The Co for Cooperative Ins.	103.94	4.4%	23,385
Saudi Dairy & Foodstuff Co.	138.00	3.4%	3,670

Worst Return Performers	Price (SAR)	Daily Return	Value (SAR 000's)
Alinma Tokio Marine Co.	27.55	(3.3%)	44,475
SALAMA Cooperative Insurance Company	15.31	(3.0%)	22,477
Al Khaleej Training & Education Co.	52.04	(2.5%)	18,632
Saudi International Petrochemical Co.	25.71	(1.3%)	27,545
Saudi Hollandi Bank	44.80	(1.0%)	4,735

Most Active Stocks By Volume	Price (SAR)	Daily Return	Volume ('000 Shrs)
Alinma Bank	21.06	(0.3%)	19,218
Emaar The Economic City	12.05	2.2%	4,779
Dar Al Arkan Real Estate Dev. Co.	8.46	1.3%	4,591
Saudi Cable Co.	9.45	6.0%	4,304
Saudi Kayan	10.11	0.8%	4,116

Source: KAMCO Research

Sectors' Return & Valuation Multiples

	Market Cap. (SAR Mn)	MTD Return	P/E (X)	P/BV (X)	Yield (%)
Saudi Stock Exchange	1,941,293	(4.2%)	18.1	2.1	2.5%
Banks & Financial	541,185	(3.9%)	12.9	1.8	2.1%
Petrochemical Industries	442,020	(6.3%)	15.0	1.8	2.8%
Cement	82,822	(5.4%)	13.3	2.7	5.8%
Retail	90,833	(2.5%)	30.2	6.2	1.5%
Energy & Utilities	77,139	(1.6%)	28.1	1.3	3.8%
Agric. & Food Ind.	126,771	(1.0%)	25.2	4.4	2.1%
Telecom	165,193	(3.6%)	23.4	1.9	4.2%
Insurance	49,633	(5.3%)	66.7	2.8	0.3%
Multi-Inv.	80,768	(1.2%)	69.3	2.2	2.5%
Indust. Inv.	71,828	(5.6%)	23.2	1.8	1.5%
Bldg. & Const.	25,428	(6.2%)	45.4	2.4	2.7%
Real Estate Dev.	122,499	(3.5%)	45.1	2.3	0.6%
Transport	33,953	(7.8%)	18.4	2.5	1.9%
Media & Publishing	3,735	(2.2%)	NM	1.7	0.0%
Hotel & Tourism	27,485	(4.1%)	18.4	4.8	1.6%

Sectors' MTD Return is based on the Change in market cap. and it might not conform with the benchmark return for each sector

Market Return, Volatility & Trading Indicators

Market Return	Closing Value	DTD Chg	DTD % Chg	MTD % Chg	YTD-15 % Chg
Tadawul All Share Index	8,699.17	44.5	0.5%	(4.4%)	4.4%
Market Cap (SAR Mn)	1,941,293	11,292.0	0.6%	(4.2%)	6.9%
Benchmark Volatility**	Since Jan-14	Since Jan-13	Since Jan-12	Since Jan-11	Since Jan-10
Tadawul All Share Index	19.7%	16.9%	15.8%	16.8%	16.6%
** Annualized Standard Deviation of Daily Returns					
Trading Indicators	Today's Value	DTD Chg	DTD % Chg	Average Daily YTD-15	YTD-14
Volume (Mn Shares)	114	(24)	(17.4%)	278	281
Value Traded (SAR Mn)	3,066	(580)	(15.9%)	7,578	8,478
No. of Trades	69,998	(15,267)	(17.9%)	133,813	142,747

Market Breadth 122 38 = 9

YTD-2015 Top Movers and Most Active Stocks

YTD-15 Best Return Performers	Price (SAR)	YTD Val (SAR Mn)	YTD Vol ('000 Shrs)	YTD-15 Return
The Co for Cooperative Ins.	103.94	7,371	92,503	108.0%
Saudi Transport & Investment Co.	69.82	10,097	192,992	107.7%
Al-Babtain Power & Telecom. Co.	44.38	3,043	72,852	63.8%
Saudi Company for Hardware	113.98	4,920	37,292	62.5%
Buruj Cooperative Insurance Co.	27.46	3,426	87,828	59.3%

YTD-15 Worst Return Performers	Price (SAR)	YTD Val (SAR Mn)	YTD Vol ('000 Shrs)	YTD-15 Return
SALAMA Cooperative Insurance Company	15.31	1,672	65,375	(44.8%)
Middle East Specialised Cables	12.31	11,219	599,925	(44.1%)
Solidarity Saudi Takaful co.	12.25	6,936	359,815	(39.7%)
National Industrialization Co	17.15	11,951	494,046	(36.0%)
Saudi Arabian Cooperative Ins. Co.	22.78	3,784	104,134	(34.2%)

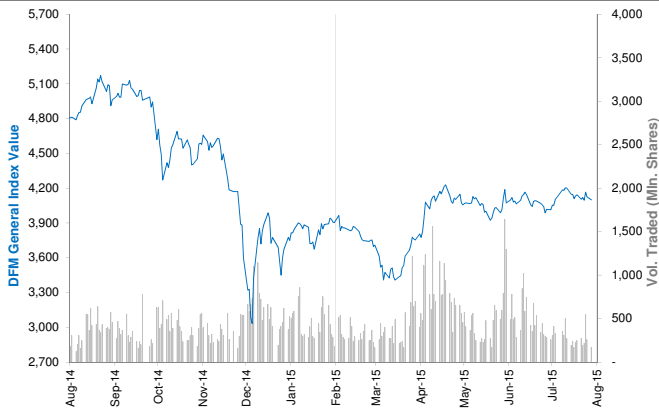
YTD-15 Most Active Stocks by Volume	Price (SAR)	YTD Val (SAR Mn)	YTD Vol ('000 Shrs)	YTD-15 Return
Dar Al Arkan Real Estate Dev. Co.	8.46	59,225	6,304,693	4.3%
Alinma Bank	21.06	103,648	4,549,741	3.7%
Saudi Kayan	10.11	24,807	2,024,942	(7.8%)
ZAIN KSA	11.42	18,403	1,959,393	(4.1%)
Saudi Arabian Mining Co.	38.86	49,767	1,246,415	27.5%

YTD-15 Return: Is a total return which accounts in addition to the change in price the cash & share dividends announced during the year.

Dubai Financial Market Daily Report

August 10, 2015

Index Performance relative to Volume



Top 10 Stocks by Market Capitalization

	Market Cap (AED Mn)	P/E (X)	ROE* (%)
1- Emirates NBD	56,689	9.8	12.5%
2- EMAAR Properties	55,989	14.5	10.8%
3- EMAAR MALLS GROUP	40,865	22.9	12.6%
4- Dubai Islamic Bank	30,049	10.5	15.7%
5- Emirates Integrated Telecom. (DU)	24,503	11.6	28.4%
6- Mashreq Bank	19,444	7.8	15.4%
7- DAMAC Properties Dubai	20,333	4.5	66.4%
8- Dubai Financial Market	15,200	24.8	7.8%
9- Commercial Bank of Dubai	14,798	12.2	16.1%
10- Arabtec Holding P.J.S.C.	10,021	NM	NM
Subtotal	305,393	11.82	14.2%

* ROE is based on TTM 1Q-2015 Net Profit & Shareholders' Equity as of 31-March-15

Today's Top Movers and Most Active Stocks

Best Return Performers	Price (AED)	Daily Return	Value Traded (AED)
Gulf Navigation Holding	0.423	2.9%	15,752,363
Mashreq Bank	115.000	2.7%	3,138,235
Al-Madina for Finance & Investment	0.679	2.0%	2,479,968
DAMAC Properties Dubai	3.660	0.8%	98,520,210
Marka	1.310	0.8%	520,500

Worst Return Performers	Price (AED)	Daily Return	Value Traded (AED)
Dubai Islamic Ins. & Reins Co. (AMAN)	0.681	(2.7%)	244,143
EMAAR MALLS GROUP	3.140	(1.9%)	7,081,158
Amanat Holdings	0.825	(1.6%)	4,605,430
Hits Telecom Holding Co.	0.382	(1.5%)	825,965
Takaful House	0.601	(1.5%)	227,440

Most Active Stocks by Volume	Price (AED)	Daily Return	Volume Traded ('000 Shrs)
Gulf Navigation Holding	0.423	2.9%	36,221
DAMAC Properties Dubai	3.660	0.8%	27,313
Gulf Finance House	0.726	0.6%	20,221
Amlak Finance	2.310	0.0%	15,435
Arabtec Holding P.J.S.C.	2.280	(1.3%)	7,487

Source: KAMCO Research

Sectors' Return & Valuation Multiples

	Market Cap. (AED Mn)	MTD % Chg	P/E (X)	P/BV (X)	Yield (%)
Dubai Financial Market	383,196	(0.8%)	12.6	1.5	2.2%
Banking	138,454	(1.4%)	10.6	1.3	3.1%
Consumer Staples	11,353	0.0%	NM	1.5	0.7%
Investment & Financial	30,295	(2.4%)	14.0	1.4	3.4%
Insurance	5,993	(2.9%)	7.7	0.6	6.2%
Industrial	4,722	6.4%	37.5	0.6	1.9%
Real Estate & Construction	136,565	0.0%	NM	1.8	0.9%
Telecommunication	24,778	(0.4%)	11.7	3.0	3.7%
Transportation	28,037	(0.6%)	30.9	1.5	2.2%
Services	2,998	(3.7%)	2.8	0.4	1.2%

Sectors' MTD Return is based on the Change in market cap. and it might not conform with the benchmark return for each sector

Market Breadth	▲ 10 ▼ 17 = 33
----------------	----------------

Market Return, Volatility & Trading Indicators

Market Return	Closing Value	DTD Chg	DTD % Chg	MTD % Chg	YTD-15 % Chg
DFM General Index	4,098.49	(24.9)	(0.6%)	(1.1%)	8.6%
Market Cap (AED Mn)	383,196	(1,587)	(0.4%)	(0.8%)	14.3%

Benchmark Volatility**	Volatility Since:				
	Jan-2014	Jan-2013	Jan-2012	Jan-2011	Jan-2010
DFM General Index	33.1%	29.9%	26.9%	25.2%	24.5%

** Annualized Standard Deviation of Daily Returns

Trading Indicators	Today's Value	DTD Chg	DTD % Chg	Average Daily YTD-15	YTD-14
Volume (Mn Shares)	171	(82.2)	(32.5%)	476	786
Value Traded (AED Mn)	294	(256.4)	(46.6%)	753	1,825
No. of Trades	3,500	(2,274)	(39.4%)	7,225	11,047

YTD-2015 Top Movers and Most Active Stocks

YTD-15 Best Return Performers	Price (AED)	Value Traded (AED '000)	Volume ('000 Shrs)	YTD-15 Return
Amlak Finance	2.310	11,157,470	4,997,682	126.5%
Takaful Emarat	1.740	187,012	142,756	117.5%
Al-Madina for Finance & Investment	0.679	203,902	384,294	88.1%
Dubai Parks And Resorts	1.290	4,728,995	4,715,767	76.7%
United Kaipara Dairies Co.	7.910	12	1	52.1%

YTD-15 Worst Return Performers	Price (AED)	Value Traded (AED '000)	Volume ('000 Shrs)	YTD-15 Return
Gulf Navigation Holding	0.423	586,905	1,608,739	(207.9%)
Int'l Financial Advisors Co.	0.524	3,293	6,483	(38.4%)
Ajman Bank	1.900	284,279	125,780	(28.8%)
Arabtec Holding P.J.S.C.	2.280	15,295,129	5,466,035	(22.2%)
Dubai National Insurance & Reinsurance	2.800	3,260	1,042	(20.0%)

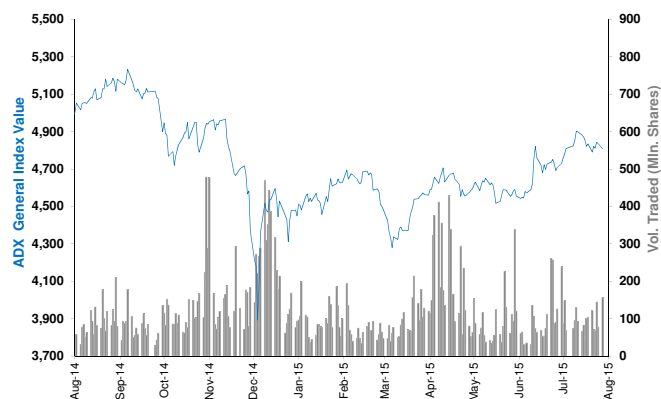
YTD-15 Most Active Stocks by Volume	Price (AED)	Value Traded (AED '000)	Volume ('000 Shrs)	YTD-15 Return
Gulf Finance House	0.726	9,737,057	19,322,235	(2.9%)
Union Properties	1.160	8,705,374	7,040,755	0.7%
Arabtec Holding P.J.S.C.	2.280	15,295,129	5,466,035	(22.2%)
Amlak Finance	2.310	11,157,470	4,997,682	126.5%
Dayaar Development	0.801	4,045,838	4,914,150	(5.8%)

YTD-15 Return: Is a total return which accounts in addition to the change in price the cash & share dividends announced during the year.

Abu Dhabi Securities Exchange Daily Report

August 10, 2015

Index Performance relative to Volume



Top 10 Stocks by Market Capitalization

	Market Cap. (AED Mn)	P/E (X)	ROE* (%)
1- Emirates Telecom. Co.	118,711	13.1	22.5%
2- First Gulf Bank	69,975	12.2	18.2%
3- National Bank Of Abu Dhabi	50,440	9.0	14.9%
4- Abu Dhabi Commercial Bank	47,227	10.9	17.1%
5- AL DAR Properties Co.	20,757	8.6	13.3%
6- Union National Bank	19,260	9.2	12.6%
7- Abu Dhabi Islamic Bank	15,721	8.8	12.7%
8- National Bank of Ras Al-Khaimah	12,656	8.5	19.8%
9- United Arab Bank	6,417	10.6	20.6%
10- National Bank of Fujairah	5,126	9.5	13.8%
Subtotal	366,288	10.89	17.0%

* ROE is based on TTM 1Q-2015 Net Profit & Shareholders' Equity as of 31-March-15

Today's Top Movers and Most Active Stocks

Best Return Performers	Price (AED)	Daily Return	Value (AED)
Dana Gas	0.61	7.0%	71,948,365
International Fish Farming Co.	6.89	6.8%	42,658
Arkan Building Materials Co.	0.98	2.1%	18,899
Ras Al Khaimah Cement Co.	0.88	1.1%	34,349

Worst Return Performers	Price (AED)	Daily Return	Value (AED)
Emirates Driving Co.	5.50	(8.3%)	5,500
Abu Dhabi National Co. for Bldg. Materials	0.60	(6.3%)	115,427
Abu Dhabi Ship Building Co.	2.80	(4.4%)	130,059
Sudan Telecom. Co.	0.66	(2.9%)	411,060
AGTHIA Group	7.70	(2.4%)	15,243

Most Active Stocks by Volume	Price (AED)	Daily Return	Volume ('000 Shrs)
Dana Gas	0.61	7.0%	118,224
Methaq Takaful Insurance Co.	1.11	(0.9%)	12,560
Eshraq Properties Co.	0.77	(1.3%)	12,302
Ras Al Khaimah Properties	0.64	(1.5%)	4,483
AL DAR Properties Co.	2.64	(1.1%)	4,256

Source: KAMCO Research

Sectors' Return & Valuation Multiples

	Market Cap. (AED Mn)	MTD % Chg	P/E (X)	P/BV (X)	Dividend Yield (%)
ADX	467,668	(0.8%)	8.7	1.5	4.0%
Banks	246,537	0.3%	10.4	1.6	4.4%
Inv. & Financial Services	5,010	0.4%	0.3	1.3	11.3%
Real Estate	23,828	(2.0%)	12.2	1.0	0.7%
Energy	8,135	3.5%	NM	0.6	3.5%
Consumer Staples	5,989	(0.5%)	18.5	1.9	1.4%
Industrial	12,259	(0.8%)	23.8	0.8	4.7%
Insurance	8,961	0.1%	NM	0.5	4.3%
Telecommunication	146,568	(2.9%)	13.4	2.3	3.8%
Services	10,382	1.3%	14.0	0.6	3.5%

Sectors' MTD Return is based on the Change in market cap. and it might not conform with the benchmark return for each sector

Market Breadth	▲	4	▼	21	=	40
----------------	---	---	---	----	---	----

Market Return, Volatility & Trading Indicators

Market Return	Closing Value	DTD Chg	DTD % Chg	MTD % Chg	YTD-15 % Chg
ADX General Index	4,808.95	(26.52)	(0.5%)	(0.5%)	6.2%
Market Cap (AED Mn)	467,668	(2,352)	(0.5%)	(0.8%)	0.8%

Benchmark Volatility**	Volatility Since:				
	Jan-2014	Jan-2013	Jan-2012	Jan-2011	Jan-2010
ADX General Index	19.2%	15.9%	13.5%	12.7%	12.1%

** Annualized Standard Deviation of Daily Returns

Trading Indicators	Today's Value	DTD Chg	DTD % Chg	Average Daily YTD-15	YTD-14
Volume (Mn Shares)	156	78.4	101.0%	109	290.6
Value Traded (AED Mn)	138	(124.0)	(47.4%)	226	744.2
No. of Trades	1,490	(859)	(36.6%)	1,803	4,064

YTD-2015 Top Movers and Most Active Stocks

YTD-15 Best Return Performers	Price (AED)	YTD-Val ('000 AED)	Volume ('000 Shrs)	YTD-15 Return
Methaq Takaful Insurance Co.	1.11	373,258	388,923	52.1%
Abu Dhabi Ship Building Co.	2.80	33,893	14,030	47.4%
Fujairah Building Industrial Co.	1.90	674	476	40.9%
Gulf Medical Projects	2.80	1,172	453	40.0%
Emirates Telecom. Co.	13.65	3,818,259	312,859	37.1%

YTD-15 Worst Return Performers	Price (AED)	YTD-Val ('000 AED)	Volume ('000 Shrs)	YTD-15 Return
Ooredoo	84.65	3,905	37	(41.0%)
Al Dhafra Insurance Co.	4.80	351	61	(37.7%)
Abu Dhabi National Hotels	2.85	38,302	13,493	(28.8%)
Abu Dhabi National Co. for Bldg. Materials	0.60	27,020	41,573	(25.0%)
National Bank Of Abu Dhabi	10.65	1,000,028	84,883	(23.9%)

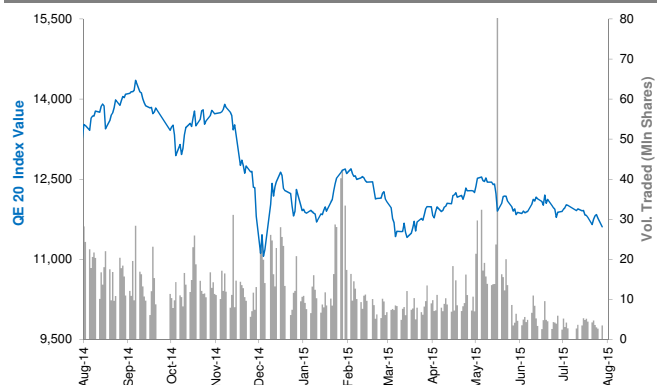
YTD-15 Most Active Stocks by Volume	Price (AED)	YTD-Val ('000 AED)	Volume ('000 Shrs)	YTD-15 Return
Eshraq Properties Co.	0.77	5,173,436	6,010,715	6.9%
Dana Gas	0.61	1,613,485	3,101,566	22.0%
AL DAR Properties Co.	2.64	7,455,995	2,815,935	(0.4%)
Ras Al Khaimah Properties	0.64	1,133,574	1,573,776	(13.5%)
Waha Capital Co.	2.49	1,550,299	547,173	(11.7%)

YTD-15 Return: Is a total return which accounts in addition to the change in price the cash & share dividends announced during the year.

Qatar Exchange Daily Report

August 10, 2015

Index Performance relative to Volume



Sectors' Return & Valuation Multiples

	Market Cap. (QAR Mn)	MTD % Chg	P/E (X)	P/B (X)	Yield (%)
Qatar Exchange	616,481	(1.5%)	13.6	2.1	4.2%
Banking & Finance	248,387	(0.8%)	12.5	2.2	4.5%
Goods & Consumer Services	28,544	(1.7%)	15.1	2.4	4.4%
Industrial	174,114	(1.9%)	17.6	3.2	4.3%
Insurance	25,511	0.2%	13.6	1.9	2.9%
Real Estate	74,440	(3.1%)	9.4	1.3	3.2%
Telecom	38,275	(2.2%)	20.7	1.4	3.8%
Transport	27,210	(0.2%)	12.8	1.6	5.0%

Sectors' MTD Return is based on the Change in market cap. and it might not conform with the benchmark return for each sector

Market Breadth

▲ 5 ▼ 34 = 4

Top 10 Stocks by Market Capitalization

	Market Cap. (QAR Mn)	P/E (X)	ROE* (%)
1- Qatar National Bank	126,721	11.8	20.0%
2- Industries Qatar	81,373	14.3	18.8%
3- Ezdan Holding Group Co.	46,153	32.5	4.8%
4- Masraf Al Rayan	32,850	15.8	19.7%
5- Mesaieed Petrochemical Holding Co.	28,054	19.4	10.9%
6- Qatar Islamic Bank	25,780	15.5	14.0%
7- Ooredoo (formerly Q-Tel)	25,594	14.6	8.3%
8- Qatar Electricity & Water Co.	23,925	15.2	25.4%
9- Qatar Insurance Co.	18,462	26.9	12.0%
10- Commercial Bank of Qatar	18,226	10.1	12.6%

Subtotal 427,137 13.21 17.3%

* ROE is based on TTM 1Q-2015 Net Profit & Shareholders' Equity as of 31-March-15

Today's Top Movers and Most Active Stocks

Best Return Performers	Price (QAR)	Daily Return	Value (QAR)
Al Ahli Bank of Qatar	49.90	2.6%	4,990
Medicare Group	177.80	1.8%	1,399,509
Widam(Qatar Meat & Livestock Co.)	61.80	1.3%	1,421,175
Qatar General Insurance & Reins. Co.	53.60	0.8%	108,862
The Commercial Bank of Qatar	55.80	0.2%	5,888,182

Worst Return Performers	Price (QAR)	Daily Return	Value (QAR)
Qatari German Co. for Medical Devices	15.10	(4.1%)	1,832,621
Gulf International Services	66.00	(3.6%)	20,673,489
Barwa Real Estate Co.	44.95	(3.3%)	26,216,059
Qatar Oman Investment Co.	15.72	(2.9%)	1,008,950
Diala Brokerage & Inv. Hldg. Co.	24.16	(2.6%)	123,411

Most Active Stocks by Volume	Price (QAR)	Daily Return	Volume (Shares)
Barwa Real Estate Co.	44.95	(3.3%)	576,894
Masraf Al Rayan	43.80	(1.1%)	568,829
Vodafone Qatar	15.00	(0.5%)	349,817
Gulf International Services	66.00	(3.6%)	311,070
Ezdan Holding Group Co.	17.40	(2.2%)	276,764

Source: KAMCO Research

Market Return, Volatility & Trading Indicators

Market Return	Closing Value	DTD Chg	DTD % Chg	MTD % Chg	YTD-15 % Chg
QE 20 Index	11,610.22	(160.03)	(1.4%)	(1.5%)	(5.5%)
Market Cap (QAR Mn)	616,481	(7,238)	(1.2%)	(1.5%)	(8.9%)

Benchmark Volatility**	QE 20 Volatility Since:				
	Jan-2014	Jan-2013	Jan-2012	Jan-2011	Jan-2010
QE 20 Index	17.2%	16.2%	14.1%	14.2%	14.3%

** Annualized Standard Deviation of Daily Returns

Trading Indicators	Today's Value	DTD Chg	DTD % Chg	Average Daily YTD-15	YTD-14
--------------------	------------------	------------	--------------	-------------------------	--------

Volume ('000 Shares)	3,491	794	29.5%	10,487	19,445
Value Traded (QAR Mn)	151	15	10.7%	430	827
No. of Trades	2,659	246	10.2%	5,236	8,959

YTD-2015 Top Movers and Most Active Stocks

YTD-15 Best Return Performers	Price (QAR)	YTD Value (QAR 000's)	YTD Volume (Shares 000's)	YTD-15 Return
Medicare Group	177.80	782,189	5,059	52.0%
Qatari German Co. for Medical Devices	15.10	715,780	46,349	48.8%
Gulf Warehousing Co.	76.60	447,888	6,794	35.8%
Al Meera Consumer Goods Co.	271.50	769,221	3,351	35.8%
Doha Insurance Co.	25.40	75,140	2,845	30.1%

YTD-15 Worst Return Performers	Price (QAR)	YTD Value (QAR 000's)	YTD Volume (Shares 000's)	YTD-15 Return
Ooredoo	79.90	1,284,376	12,786	(35.5%)
Gulf International Services	66.00	5,221,540	58,380	(32.0%)
Diala Brokerage & Inv. Hldg. Co.	24.16	581,878	14,899	(27.7%)
Mesaieed Petrochemical Holding Co.	22.33	842,121	31,327	(24.3%)
Industries Qatar	134.50	4,438,632.1	30,520.61	(19.9%)

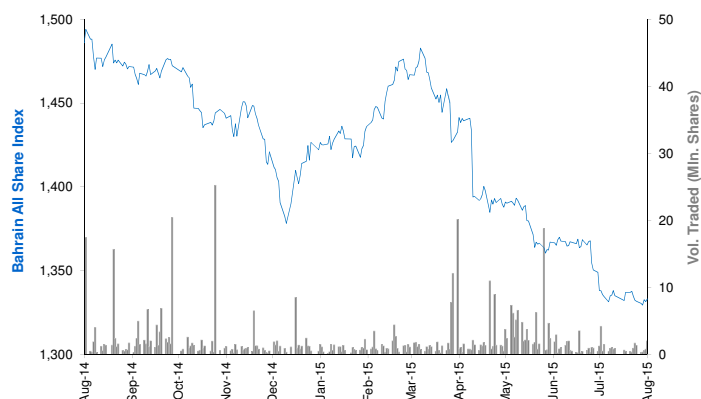
YTD-15 Most Active Stocks by Vol.	Price (QAR)	YTD Value (QAR 000's)	YTD Volume (Shares 000's)	YTD-15 Return
Ezdan Holding Group Co.	17.40	6,125,687	338,441	16.6%
Vodafone Qatar	15.00	3,515,749	202,999	(8.8%)
Barwa Real Estate Co.	44.95	7,980,131	166,771	7.3%
Mazaya Qatar R.E Development Co.	17.50	1,623,119	83,276	(4.0%)
Masraf Al Rayan	43.80	3,709,327	79,975	(0.9%)

YTD-15 Return: Is a total return which accounts in addition to the change in price the cash & share dividends announced during the year.

Bahrain Bourse Daily Report

August 10, 2015

Index Performance relative to Volume



Sectors' Return & Valuation Multiples

	Market Cap. (BHD Mn)	MTD % Chg	P/E (X)	P/B (X)	Yield (%)
Bahrain Bourse	7,848	0.2%	9.7	1.0	3.6%
Commercial Banks	3,455	(0.0%)	10.6	1.4	3.6%
Investment	2,224	0.1%	9.3	0.7	3.8%
Insurance	156	(0.5%)	12.0	0.8	4.4%
Service	1,088	1.9%	11.4	1.1	2.2%
Hotel & Tourism	207	0.0%	11.7	1.0	1.6%
Industrial	718	(1.2%)	6.1	0.7	5.5%

Sectors' MTD Return is based on the Change in market cap. and it might not conform with the benchmark return for each sector

Market Breadth

▲	1	▼	1	=	38
---	---	---	---	---	----

Top 10 Stocks by Market Capitalization

	Market Cap. (BHD Mn)	P/E (X)	ROE* (%)
1- Ahli United Bank (Price in USD)	1,733	9.03	15.8%
2- National Bank of Bahrain	761	14.13	14.7%
3- Arab Banking Corp. (Price in USD)	727	6.45	7.9%
4- Aluminum Bahrain	699	6.00	12.5%
5- Bahrain Telecommunications Co.	569	12.73	8.7%
6- Bank of Bahrain and Kuwait	465	9.13	14.7%
7- United Gulf Bank	325	NM	2.6%
8- Al Salam Bank	295	19.28	4.9%
9- Al Baraka Banking (Price in USD)	286	4.90	12.2%
10- Gulf Finance House (Price in USD)	244	50.04	1.8%

* ROE is based on TTM 1Q2015 Net Profit & Shareholders' Equity as of 31-March-15

Subtotal	6,104	9.35	10.9%
-----------------	--------------	-------------	--------------

Market Return, Volatility & Trading Indicators

Market Return	Closing Value	DTD Chg	DTD % Chg	MTD % Chg	YTD-15 % Chg
Bahrain All Share Index	1,333.15	0.13	0.0%	0.1%	(6.5%)
Market Cap (BHD Mln)	7,847.58	6.37	0.1%	0.2%	(3.0%)

Benchmark Volatility**	Volatility Since:				
	Jan-2014	Jan-2013	Jan-2012	Jan-2011	Jan-2010
Bahrain All Share Index	7.14%	6.9%	6.8%	7.3%	7.8%

** Annualized Standard Deviation of Daily Returns

Trading Indicators	Today's Value	DTD Chg	DTD % Chg	Average Daily YTD-15	YTD-14
Volume ('000 Shares)	520	(1,500)	(74.3%)	1,840	6,028
Value Traded (BHD '000)	96	(121)	(55.9%)	410	1,413
No. of Trades	28	(6)	(17.6%)	48	80

Today's Top Movers and Most Active Stocks

Best Return Performers	Price (BHD)	Daily Return	Value (BHD)
Bahrain Duty Free Complex	0.845	1.8%	31,241

Worst Return Performers	Price (BHD)	Daily Return	Value (BHD)
AlKhaleeji Commercial Bank	0.065	(1.5%)	3,510

Most Active Stocks by Volume	Price (BHD)	Daily Return	Volume (Shares)
Inovest BSC. (USD)	0.180	0.0%	192,333
Ahli United Bank (USD)	0.715	0.0%	117,450
ITHMAR Bank (USD)	0.140	0.0%	80,000
AlKhaleeji Commercial Bank	0.065	(1.5%)	54,000
Bahrain Duty Free Complex	0.845	1.8%	36,971

Source: KAMCO Research

YTD-2015 Top Movers and Most Active Stocks

YTD-15 Best Return Performers	Price (BHD)	YTD-Val (BHD '000)	YTD Vol (Shares)	YTD-15 Return
AlKhaleeji Commercial Bank	0.065	4,363	73,704,333	51.2%
Al Salam Bank	0.138	3,420	25,830,100	37.0%
BANADER Co. For Hotels	0.070	26	382,077	25.0%
Al-Ahlia Insurance Co.	0.330	977	2,965,587	22.2%
Bahrain Toursim Co.	0.264	85	349,916	20.0%

YTD-15 Worst Return Performers	Price (BHD)	YTD-Val (BHD '000)	YTD Vol (Shares)	YTD-15 Return
Takaful International Co.	0.100	2,502	26,054,619	(31.0%)
United Gulf Investment Corporation	0.100	10.0	99,114	(24.8%)
Bank of Bahrain and Kuwait	0.430	8,219	18,684,479	(16.8%)
Inovest BSC. (USD)	0.180	108	1,584,146	(14.3%)
Al Baraka Banking Group (USD)	0.680	951	3,526,303	(13.8%)

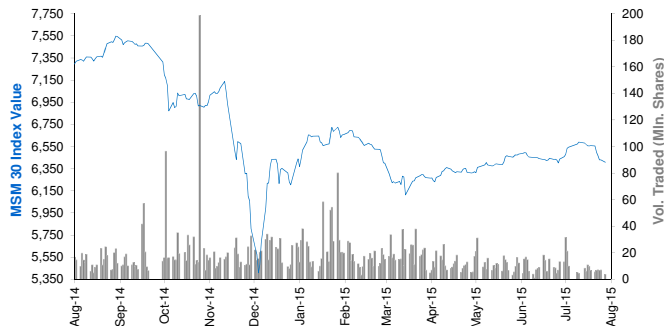
YTD-15 Most Active Stocks by Volume	Price (BHD)	YTD-Val (BHD '000)	YTD Vol (Shares)	YTD-15 Return
AlKhaleeji Commercial Bank	0.065	4,363	73,704,333	51.2%
Ahli United Bank (USD)	0.715	18,203	62,906,572	(3.7%)
Takaful International Co.	0.100	2,502	26,054,619	(31.0%)
Al Salam Bank	0.138	3,420	25,830,100	37.0%
Bank of Bahrain and Kuwait	0.430	8,219	18,684,479	(16.8%)

YTD-15 Return: Is a total return which accounts in addition to the change in price the cash & share dividends announced during the year.

Muscat Securities Market Daily Report

August 10, 2015

Index Performance relative to Volume



Sectors' Return & Valuation Multiples

	Market Cap. (OMR Mn)	MTD % Chg	P/E (X)	P/B (X)	Yield (%)
Muscat Securities Mkt	8,125	(2.0%)	10.65	1.50	3.9%
Financial	3,595	(2.7%)	8.81	1.07	3.6%
Industrial	1,088	(2.1%)	12.21	1.72	4.7%
Services	3,442	(1.2%)	12.95	2.44	3.9%

Sectors' MTD Return is based on the Change in market cap. and it might not conform with the benchmark return for each sector

Market Breadth	▲	1	▼	14	=	44
----------------	---	---	---	----	---	----

Top 10 Stocks by Market Capitalization

	Market Cap. (OMR Mn)	P/E (X)	ROE* (%)
1- Oman Telecom Co.	1,298	10.58	22.3%
2- Bank Muscat	1,233	7.39	13.2%
3- Ooredoo	508	12.78	21.5%
4- National Bank of Oman	461	8.76	14.9%
5- Bank Dhofar	434	10.33	12.7%
6- Ahli Bank	305	11.88	15.5%
7- Raysut Cement	290	11.50	19.0%
8- HSBC Bank Oman	252	19.55	4.3%
9- Sembcorp Salalah	248	34.62	9.6%
10- Bank Sohar	241	8.46	14.7%

* ROE is based on TTM 1Q2015 Net Profit & Shareholders' Equity as of 31-March-15

Today's Top Movers and Most Active Stocks

Best Return Performers	Price (OMR)	Daily Return	Value (OMR)
Sembcorp Salalah	2.600	6.1%	7,800

Worst Return Performers	Price (OMR)	Daily Return	Value (OMR)
Renaissance Services	0.251	(5.6%)	13,490
Al Sharqia Inv. Holding	0.123	(5.4%)	17,880
HSBC Bank Oman	0.126	(4.5%)	4,650
Gulf Investment Services	0.122	(3.2%)	14,530
Oman Investment & Finance Co.	0.208	(2.3%)	13,980

Most Active Stocks by Volume	Price (OMR)	Daily Return	Volume (Shares)
Al Jazeera Steel Products Co.	0.230	0.0%	701,600
Al Anwar Holding	0.209	(2.3%)	700,240
Al Anwar Ceramic Tiles Co.	0.396	(0.5%)	651,000
Bank Muscat	0.538	0.0%	246,612
Oman & Emirates Investment	0.110	(0.9%)	166,289

Source: KAMCO Research

Market Return, Volatility & Trading Indicators

Market Return	Closing Value	DTD Chg	DTD % Chg	MTD % Chg	YTD-15 % Chg
MSM 30 Index	6,407.86	(22.43)	(0.3%)	(2.3%)	1.0%
Market Cap (OMR Mn)	8,124.97	(19.70)	(0.2%)	(2.0%)	5.1%

Benchmark Volatility**	Volatility Since:				
	Jan-2014	Jan-2013	Jan-2012	Jan-2011	Jan-2010
MSM 30 Index	13.7%	11.9%	10.9%	11.2%	10.8%

** Annualized Standard Deviation of Daily Returns

Trading Indicators	Today's Value	DTD Chg	DTD % Chg	Average Daily YTD-15	YTD-14
--------------------	------------------	------------	--------------	-------------------------	--------

Volume ('000 Shares)	3,714	(3,385)	(47.7%)	15,541	22,206
Value Traded (OMR '000)	1,455	(863)	(38.8%)	4,655	8,462
No. of Trades	372	(89)	(19.3%)	865	1,302

YTD-2015 Top Movers and Most Active Stocks

YTD-15 Best Return Performers	Price (OMR)	YTD-Value (OMR 000's)	YTD Vol. (Shares 000's)	YTD-15 Return
Gulf International Chemicals	0.266	10,923	45,955	75.0%
ONIC. Holding	0.480	7,782	18,867	51.9%
Al Suwadi Power	2.230	3,100	15,374	33.9%
Al Batinah power	0.226	2,722	13,434	32.2%
Oman Investment & Finance Co.	0.208	19,503	83,619	28.6%

YTD-15 Worst Return Performers	Price (OMR)	YTD-Value (OMR 000's)	YTD Volume (Shares 000's)	YTD-15 Return
Port Services Corporation	0.185	473	1,721	(47.7%)
Renaissance Services	0.251	14,064	35,235	(47.0%)
Al Jazeera Steel Products Co.	0.230	3,140	10,806	(31.5%)
National Gas Co.	0.348	3,058	6,945	(30.6%)
Galfar Engineering	0.230	15,211	101,664	(27.3%)

YTD-15 Most Active Stocks by Volume	Price (OMR)	YTD-Value (OMR 000's)	YTD Volume (Shares 000's)	YTD-15 Return
Al Anwar Holding	0.209	126,285	499,232	25.8%
Gulf Investment Services	0.122	32,081	198,940	(14.1%)
Oman & Emirates Investment	0.110	24,599	195,209	(10.6%)
Bank Muscat	0.538	107,788	193,259	(2.9%)
Global Financial Investment Co.	0.119	17,581	150,936	(2.5%)

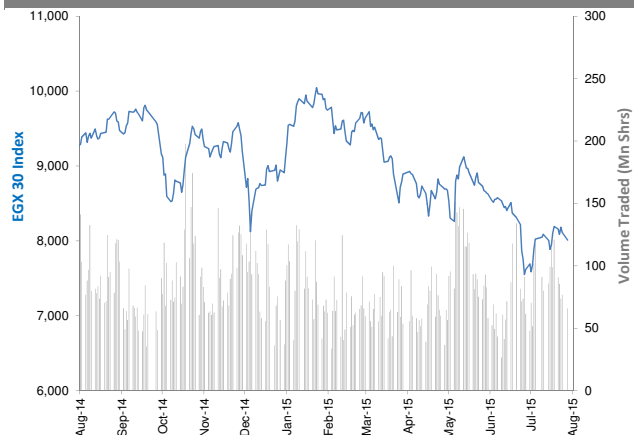
YTD-15 Return: Is a total return which accounts in addition to the change in price the cash & share dividends announced during the year.

The Egyptian Exchange Daily Report

(The bulletin covers the top 60 companies by Mkt. Cap out of 336 listed companies)

August 10, 2015

Index Performance relative to Volume



Sectors' Return & Valuation Multiples

	Market Cap. (EGP Mn)	MTD % Chg	P/E (X)	P/BV (X)	Yield (%)
The Egyptian Exchange	332,696	(1.7%)	16.6	1.4	2.3%
Banking & Finance	77,110	(1.6%)	10.0	2.2	2.0%
Basic Resources	14,234	0.4%	NM	1.5	4.0%
Chemical	20,785	(2.0%)	8.3	3.0	4.3%
Construction & Material	77,411	(5.3%)	16.7	0.7	3.2%
Financial Services	18,944	(4.3%)	36.9	0.9	1.7%
Food & Beverage	7,742	2.9%	21.4	2.1	3.1%
Healthcare & Pharma.	6,903	7.1%	21.6	3.6	0.0%
Ind. Goods, Services, Auto.	12,818	(1.5%)	20.9	1.6	1.7%
Media	504	(0.7%)	16.1	0.2	0.0%
Oil & Gas	3,156	(3.6%)	4.4	1.1	19.1%
Personal & Household	17,275	0.6%	14.4	1.5	0.0%
Real Estate	34,461	(3.5%)	20.4	1.0	0.9%
Telecommunication	37,237	(1.0%)	31.8	1.4	2.6%
Travel & Leisure	4,117	(2.6%)	22.0	1.1	0.0%

Sectors' MTD Return is based on the Change in market cap. and it might not conform with the benchmark return for each sector

Top 10 Stocks by Market Capitalization

	Market Cap. (EGP Mn)	P/E (X)	ROE* (%)
1-Orascom Construction Industries (OCI)	59,382	NM	NM
2-Commercial Int'l Bank (Egypt)	49,223	13.2	25.4%
3-Qatar National Bank AlAhli	17,076	7.4	19.5%
4-T M G Holding	16,715	24.5	2.6%
5-Telecom Egypt	13,708	6.8	7.4%
6-Global Telecom Hldg.	13,324	NM	NM
7-EASTERN CO	11,000	12.1	18.8%
8-Elswedey Cables	10,391	25.8	7.6%
9-MobiNil	10,205	NM	NM
10-Credit Agricole Egypt	7,032	10.4	23.2%
Subtotal	148,673	15.02	9.6%

*: ROE is based on Net Profit for the Period FY-14 & Shareholders' Equity as of 31-December-14

Today's Top Movers and Most Active Stocks

Best Return Performers	Last Price (EGP)	Daily Return
Orascom Hotels & Development	10.08	6.0%
National CementCo. - Egypt	10.09	4.6%
Misr Beni Suef Cement	39.00	2.6%
Qatar National Bank AlAhli	35.00	2.6%
Faisal Islamic Bank of Egypt	40.80	2.0%

Worst Return Performers	Last Price (EGP)	Daily Return
Suez Cement Co.	31.65	(9.6%)
Aluminium Co. of Egypt	13.10	(8.4%)
Canal Shipping Agencies Co.	8.90	(6.7%)
El Ahli Investment and Development	7.00	(5.3%)
Asec Company for Mining - Ascom	6.60	(4.6%)

Most Active Stocks By Volume	Last Price (EGP)	Volume ('000 Shrs)
Amer Group Holding	1.01	25,727
Egyptian Resorts Co.	1.03	7,248
Citadel Capital	1.92	5,403
Palm Hills Developments	2.39	4,790
Arab Cotton Ginning	2.95	3,868

Source: KAMCO Research

Market Return, Volatility & Trading Indicators

Market Return	Closing Value	DTD Chg	DTD % Chg	MTD % Chg	YTD-15 % Chg
EGX 30 Index	8,011.06	(103.02)	(1.3%)	(2.2%)	(10.3%)
Market Cap (EGP Mn)	332,696	(3,179)	(1.1%)	(1.7%)	(15.2%)

Benchmark Volatility**	Since Jan-14	Since Jan-13	Since Jan-12	Since Jan-11	Since Jan-10
EGX 30 Index	21%	21%	24%	25%	26%

**: Annualized Standard Deviation of Daily Returns

Trading Indicators	Today's Value	DTD Chg	DTD % Chg	Average Daily YTD-15	YTD-14
Volume (Mn Shares)	66	(10.75)	(14.0%)	78	131
Value Traded (EGP Mn)	185	(111.7)	(37.7%)	373	561
No. of Trades	8,864	(2,044)	(18.7%)	11,662	16,289

Market Breadth	▲	12	▼	40	=	8
----------------	---	----	---	----	---	---

YTD-2015 Top Movers and Most Active Stocks

YTD-15 Best Return Performers	Last Price (EGP)	Volume ('000 Shrs)	YTD-15 Return
Credit Agricole Egypt	24.50	24,186	23.9%
Misr Cement Co.	82.15	8,075	15.1%
Qatar National Bank AlAhli	35.00	2,346	12.9%
Elswedey Cables	46.51	24,471	12.1%
Egyptian Int'l Pharmaceutical	87.01	2,552	10.8%

YTD-15 Worst Return Performers	Last Price (EGP)	Volume ('000 Shrs)	YTD-15 Return
GB AUTO S.A.E	3.81	30,874	(87.7%)
Orascom Hotels & Development	10.08	16,732	(48.1%)
Asec Company for Mining - Ascom	6.60	4,180	(44.1%)
Palm Hills Developments	2.39	991,920	(41.8%)
Egyptian Co. for Mobile Services (MobiNil)	102.05	415	(40.5%)

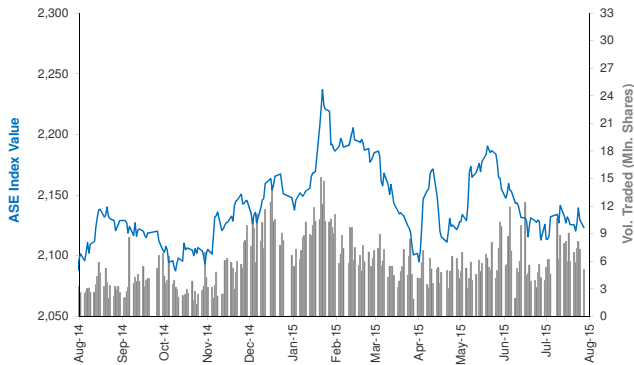
YTD-15 Most Active Stocks by Volume	Last Price (EGP)	Volume ('000 Shrs)	YTD-15 Return
Amer Group Holding	1.01	3,399,676	(21.09%)
Citadel Capital	1.92	1,527,936	(33.10%)
Global Telecom Hldg. (Orascom Telecom)	2.54	1,054,303	(36.02%)
Palm Hills Developments	2.39	991,920	(41.85%)
Egyptian Resorts Co.	1.03	937,227	(15.57%)

YTD-15 Return: Is a total return which accounts in addition to the change in price the cash & share dividends announced during the year.

Amman Stock Exchange Daily Report (1st Market)

August 10, 2015

Index Performance relative to Volume



Sectors' Return & Valuation Multiples

	Market Cap. (JD Mn)	MTD % Chg	P/E (X)	P/BV (X)	Yield (%)
Amman Stock Exchange	13,311	(0.4%)	12.3	0.9	5.4%
Banks	9,344	0.0%	8.9	0.8	5.2%
Insurance	97	1.3%	NM	0.8	3.3%
Diversified Financial Services	201	3.0%	NM	0.5	1.1%
Real Estate	294	6.1%	NM	0.8	0.2%
Educational Services	317	0.2%	12.0	2.0	14.7%
Hotels and Tourism	137	1.9%	23.6	0.7	54.7%
Transportation	99	(0.1%)	NM	1.7	2.1%
Technology & Commun.	723	(4.0%)	18.1	2.0	5.8%
Media	13	(0.8%)	NM	0.3	0.0%
Utilities & Energy	613	(1.8%)	14.8	2.4	3.6%
Pharmaceutical & Medical Ind.	106	3.8%	NM	0.7	2.9%
Tobacco & Cigarettes	360	5.4%	13.6	3.5	5.5%
Mining & Extraction Industries	592	0.3%	31.1	0.6	0.2%
Engineering & Construction	90	(7.8%)	28.1	1.3	3.8%
Textiles , Leather & Cloth.	80	(0.5%)	19.5	0.9	5.6%

Sectors' MTD Return is based on the Change in market cap. and it might not conform with the benchmark return for each sector

Top 10 Stocks by Market Capitalization

	Market Cap. (JD Mn)	P/E (X)	ROE* (%)
1-ARAB BANK	3,858	6.7	7.4%
2-HOUSING BK TRD FIN	2,344	19.5	12.2%
3-JORDAN TELECOM	708	16.8	11.9%
4-JOR ISLAMIC BANK	545	12.1	16.0%
5-JOR PHOSPHATE MN	446	22.5	2.6%
6-JOR KUWAIT BANK	398	8.0	11.5%
7-BANK OF JORDAN	386	8.2	14.0%
8-CAIRO AMMAN BANK	376	8.4	15.3%
9-JOR PETROLM REF	353	10.9	22.1%
10-EQBAL INV.CO	298	11.3	39.1%

Subtotal	9,709	9.70	8.8%
-----------------	--------------	-------------	-------------

* ROE is based on FY-2014 Net Profit & Shareholders' Equity as of 31-December-14

Today's Top Movers and Most Active Stocks

Best Return Performers	Price (JD)	Daily Return
AL-ZARQA EDUCATIONAL AND INVESTMENT	2.99	5.3%
M. E PHARMA. & CHMICAL IND. & MEDICAL APPLIANCE	1.07	4.9%
JORDAN LOAN GUARANTEE CORP.	0.89	4.7%
EL-ZAY READY WEAR MANUFACTURING	0.27	3.8%
ARAB BANKING CORPORATION /(JORDAN)	1.14	1.8%

Worst Return Performers	Price (JD)	Daily Return
READY MIX CONCRETE & CONSTRUCTION SUPPLIES	2.45	(7.2%)
AL-AMAL FINANCIAL INVESTMENTS CO.	1.41	(5.4%)
PREMIER BUSINESS AND PROJECTS CO.	1.48	(4.5%)
JORDAN VEGETABLE OIL INDUSTRIES	1.31	(4.4%)
JORDAN DUBAI PROPERTIES	0.44	(4.3%)

Most Active Stocks By Volume	Price (JD)	Volume ('000 Shrs)
AD-DULAYL INDUSTRIAL PARK & REAL ESTATE CO.	2.05	1,566
AL-AMAL FINANCIAL INVESTMENTS CO.	1.41	1,290
SPECIALIZED INVESTMENT COMPOUNDS	0.58	521
REAL ESTATE DEVELOPMENT	0.42	391
JORDAN INDUSTRIAL RESOURCES	0.26	155

Source: KAMCO Research

Market Return, Volatility & Trading Indicators

Market Return	Closing Value	DTD Chg	DTD % Chg	MTD % Chg	YTD-15 % Chg
ASE Index	2,123.28	(6.54)	(0.3%)	(0.1%)	(1.9%)
Market Cap (JD Mn)	13,310.71	(10.14)	(0.1%)	(0.4%)	(4.2%)

Benchmark Volatility**	Since Jan-2014	Since Jan-2013	Since Jan-2012
ASE Index	7.2%	7.8%	7.5%

** Annualized Standard Deviation of Daily Returns

Trading Indicators	Today's Value	DTD Chg	DTD % Chg	Average Daily YTD-15	YTD-14
Volume ('000 Shares)	5,134	(2,198)	(30.0%)	6,603	5,024
Value Traded (JD '000)	7,362	(3,958)	(35.0%)	7,464	6,383
No. of Trades	2,199	(619)	(22.0%)	2,396	2,309

Market Breadth	▲ 12 ▼ 28 = 79
-----------------------	-----------------------

YTD-2015 Top Movers and Most Active Stocks

YTD-15 Best Return Performers	Price (JD)	Volume ('000 Shrs)	YTD-15 Return
JORDAN DAIRY	7.98	92.9	295.0%
AD-DULAYL INDUSTRIAL PARK & REAL ESTATE CO.	2.05	255,646.9	150.0%
REAL ESTATE DEVELOPMENT	0.42	42,211.6	133.3%
JORDAN LOAN GUARANTEE CORP.	0.89	5,728.0	67.9%
AL-AMAL FINANCIAL INVESTMENTS CO.	1.41	52,519.5	62.1%

YTD-15 Worst Return Performers	Price (JD)	Volume ('000 Shrs)	YTD-15 Return
AL-TAJAMOUAT FOR CATERING AND HOUSING CO.	0.60	82,721.2	(53.1%)
JORDAN INDUSTRIAL RESOURCES	0.26	74,420.2	(46.9%)
M. E PHARMA. & CHMICAL IND. & MEDICAL APPLIANCE	1.07	766.4	(46.0%)
JORDAN PRESS FOUNDATION/AL-RA'I	1.18	338.7	(41.6%)
TRANSPORT& INVESTMENT BARTER CO.	0.45	89,767.2	(38.4%)

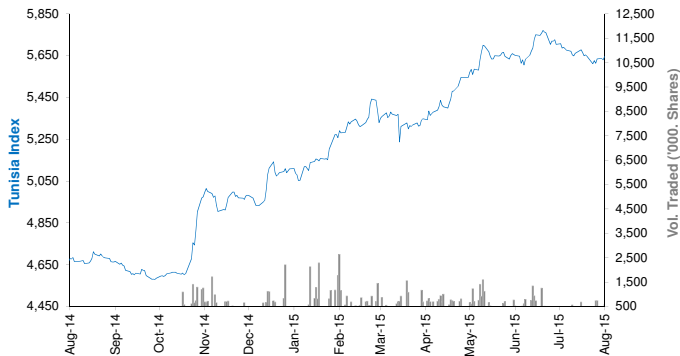
YTD-15 Most Active Stocks by Volume	Price (JD)	Volume ('000 Shrs)	YTD-15 Return
AD-DULAYL INDUSTRIAL PARK & REAL ESTATE CO.	2.05	255,647	150.0%
TRANSPORT& INVESTMENT BARTER CO.	0.45	89,767	(38.4%)
SPECIALIZED INVESTMENT COMPOUNDS	0.58	84,907	0.0%
AL-TAJAMOUAT FOR CATERING AND HOUSING CO.	0.60	82,721	(53.1%)
JORDAN INDUSTRIAL RESOURCES	0.26	74,420	(46.9%)

YTD-15 Return: Is a total return which accounts in addition to the change in price the cash & share dividends announced during the year.

Tunisia Stock Exchange Daily Report

August 10, 2015

Index Performance relative to Volume



Sectors' Return & Valuation Multiples

	Market Cap. (DT Mn)	MTD % Chg	P/E (X)	P/B (X)	Yield (%)
Tunis Stock Exchange	16,734	(0.4%)	13.77	1.48	2.7%
Banking	6,804	(0.6%)	16.61	1.52	3.2%
Insurance	811	0.4%	19.29	1.71	2.1%
Leasing	512	(0.2%)	11.63	1.26	4.2%
Financial Services	1,459	1.9%	16.11	2.22	1.1%
Industrial	1,177	1.7%	2.51	0.38	2.3%
Chemical Industry	604	(2.8%)	16.02	1.80	4.0%
Food & Beverage	3,152	(1.6%)	20.84	4.31	3.0%
Retailing	1,365	(1.2%)	NM	3.73	0.3%
Others	851	0.8%	NM	1.14	3.5%

Sectors' MTD Return is based on the Change in market cap. and it might not conform with the benchmark return for each sector

Top 10 Stocks by Market Capitalization

	Market Cap. (DT Mn)	P/E (X)	ROE* (%)
1-Société Frigorifique et Brasserie de Tunis	2,250	17.56	22.3%
2-Banque de Tunisie	1,575	17.96	14.0%
3-Banque Internationale Arabe de Tunisie	1,386	11.88	17.0%
4-Banque Attijari De Tunisie	1,004	13.49	17.7%
5-Poulina Group Holding	999	13.79	12.5%
6-Delice Holding	836	32.38	20.2%
7-Amen Bank	667	7.38	13.2%
8-Union Bancaire pour le Commerce et	510	17.55	9.9%
9-Banque Nationale Agricole	469	25.05	3.2%
10-Arab Tunisian Bank	462	8.37	10.6%
Subtotal	10,158	14.54	13.7%

*: ROE is based on Net Profit for the Period FY-14 & Shareholders' Equity as of 31-December-14

Today's Top Movers and Most Active Stocks

Best Return Performers	Price (DT)	Daily Return
Tuninvest – Sicar	11.74	3.0%
Hannibal Lease	8.44	2.9%
Electrostar	4.99	2.7%
Société Générale Industrielle de Filtration	2.73	2.2%
Banque Nationale Agricole	14.65	2.2%

Worst Return Performers	Price (DT)	Daily Return
Société Nouvelle Maison de la Ville de Tunis	13.90	(3.4%)
Société Moderne de Céramique	2.90	(3.0%)
Société Immobilière et de Participation	44.00	(2.2%)
Banque Internationale Arabe de Tunisie	81.51	(2.1%)
TelNet Holding	4.20	(1.9%)

Most Active Stocks By Volume	Price (DT)	Volume (Shares)
Société Moderne de Céramique	2.90	109,187
Banque Nationale Agricole	14.65	47,555
Société d'Articles Hygiéniques	11.04	29,225
Société Immobilière Tuniso-Séoudienne	2.44	17,350
Euro-Cycles	27.69	15,981

Source: KAMCO Research

Market Return, Volatility & Trading Indicators

Market Return	Closing Value	DTD Chg	DTD % Chg	MTD % Chg	YTD-15 % Chg
Tunisia Index	5,626.51	(23.97)	(0.4%)	(0.1%)	10.5%
Market Cap (DT Mln)	16,734	(91.65)	(0.5%)	(0.4%)	3.3%

Benchmark Volatility	Since Jan-14	Since Jan-13	Since Jan-12
Tunisia Index	6.7%	6.9%	6.9%

Trading Indicators	Today's Value	DTD Chg	DTD % Chg	Average Daily YTD-15	YTD-14
Volume ('000 Shares)	360	(14.5)	(3.9%)	645	797
Value Traded ('000 DT)	2,877	278	10.7%	5,857	5,173
No. of Trades	988	(155)	(14%)	1,433	1,472

Market Breadth	▲ 17	▼ 18	= 29
----------------	------	------	------

YTD-2015 Top Movers and Most Active Stocks

YTD-15 Best Return Performers	Price (DT)	Volume (('000 Shrs)	YTD-15 Return
Banque Nationale Agricole	14.65	7,301.0	92.8%
Euro-Cycles	27.69	1,326.9	70.7%
Société de Placement et de Dévelop. Ind. et Touristique	14.50	230.4	57.8%
Banque de l'Habitat	14.39	2,345.3	40.4%
Société Tunisienne de Banque	6.50	1,847.6	30.0%

YTD-15 Worst Return Performers	Price (DT)	Volume (('000 Shrs)	YTD-15 Return
Société Tunisienne d'Equipeement	5.01	0.758	(51.9%)
Société Tunis. d'Entreprises de Télécom.	1.79	726.2	(48.1%)
Société Nouvelle Maison de la Ville de Tunis	13.90	573.5	(36.8%)
Ciments De Bizerte	4.60	233.9	(28.7%)
Electrostar	4.99	2,489.6	(27.6%)

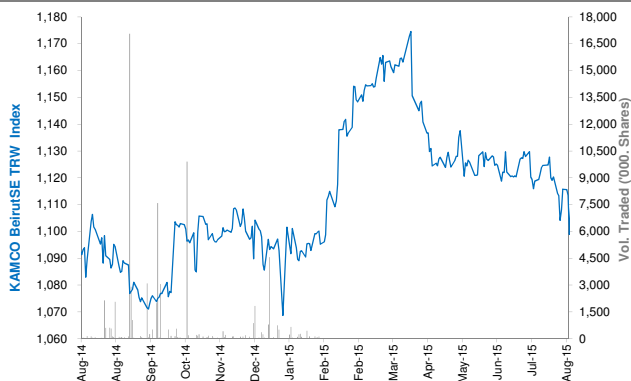
YTD-15 Most Active Stocks by Volume	Price (DT)	Volume (('000 Shrs)	YTD-15 Return
Société Moderne de Céramique	2.90	15,616.3	15.5%
Société Frigorifique et Brasserie de Tunis	25.00	7,330.5	11.1%
Banque Nationale Agricole	14.65	7,301.0	92.8%
Société d'Articles Hygiéniques	11.04	6,774.4	18.6%
TUNISAIR	0.85	4,246.3	(24.8%)

YTD-15 Return: Is a total return which accounts in addition to the change in price the cash & share dividends announced during the year.

Beirut Stock Exchange Daily Report

August 10, 2015

Index Performance relative to Volume



Sectors' Return & Valuation Multiples

	Market Cap. (USD Mn)	MTD % Chg	P/E (X)	P/B (X)	Yield (%)
Beirut Stock Exchange	11,323	(1.0%)	1.22	0.11	2.6%
Banking	9,175	(1.0%)	5.15	0.56	2.9%
Industrial	323	(0.3%)	6.08	0.88	8.6%
Trading	35	0.0%	0.01	0.00	0.0%
Real Estate & Construction	1,810	(1.4%)	9.91	0.97	0.0%

Sectors' MTD Return is based on the Change in market cap. and it might not conform with the benchmark return for each sector

Market Breadth

▲	2	▼	4	=	24
---	---	---	---	---	----

Top 10 Stocks by Market Capitalization

	Market Cap. (USD Mn)	P/E (X)	ROE* (%)
1- Bank Audi	2,371	5.98	10.3%
2- BLOM Bank	2,043	5.60	14.4%
3- Solidere A	1,099	6.01	9.8%
4- Byblos Bank	922	5.51	6.7%
5- BLOM Bank GDR	746	-	-
6- Solidere B	711	3.89	9.8%
7- Bank Audi GDR	697	-	-
8- Bank Of Beirut	310	2.86	11.2%
9- Holcim Liban	295	6.18	14.1%
10- Byblos Bank Preferred 2009	204	-	-
Subtotal	9,397	5.08	10.7%

*: ROE is based on Net Profit for the Period FY-14 & Shareholders' Equity as of 31-December-14

Market Return, Volatility & Trading Indicators

Market Return	Closing Value	DTD Chg	DTD % Chg	MTD % Chg	YTD-15 % Chg
KAMCO BeirutSE TRW Index	1,104.35	(5.85)	(0.5%)	(1.0%)	1.1%
Market Cap (USD Mn)	11,323.232	(60.11)	(0.5%)	(1.0%)	0.9%
Benchmark Volatility	Since Jan-14	Since Jan-13		Since Jan-12	
KAMCO BeirutSE TRW Index	7.8%	7.4%		7.1%	
Trading Indicators	Today's Value	DTD Chg	DTD % Chg	Average Daily YTD-15	YTD-14
Volume ('000s shares)	41.68	(32)	(43.3%)	335	662
Value Traded ('000s USD)	725.59	(268)	(27.0%)	2,631	2,878

Today's Top Movers and Most Active Stocks

Best Return Performers	Price (USD)	Daily Return
BLC Bank Preferred C	101.00	1.0%
BLC Bank Preferred B	100.50	0.5%

Worst Return Performers	Price (USD)	Daily Return
Bank Audi GDR	6.00	(2.0%)
Bank Audi	5.93	(1.2%)
Solidere B	10.94	(1.1%)
Solidere A	10.99	(1.0%)

Most Active Stocks by Volume	Price (USD)	Volume (Shares)
Bank Audi	5.93	13,480
Bank of Beirut Preferred Class I	25.75	9,887
Bank Audi GDR	6.00	8,000
Solidere A	10.99	6,441
BLC Bank Preferred C	101.00	2,000

Source: KAMCO Research

YTD-2015 Top Movers and Most Active Stocks

YTD Best Return Performers	Price (USD)	YTD Volume (Shares)	YTD-15 Return
BEMO Bank	1.90	215,084	8.6%
BLOM Bank	9.50	5,763,927	8.0%
BLOM Bank GDR	10.10	787,407	3.1%
Bank of Beirut Preferred Class J	25.75	41,925	3.0%
Byblos Bank	1.63	6,972,287	1.9%

YTD Worst Return Performers	Price (USD)	YTD Volume (Shares)	YTD-15 Return
Ciments Blancs B	3.300	9,950	(12.0%)
Bank Audi GDR	6.000	7,025,429	(8.4%)
Solidere B	10.940	1,281,635	(3.5%)
Solidere A	10.990	3,232,799	(2.9%)
Bank of Beirut Preferred Class E	25.50	89,831	(2.9%)

YTD Most Active Stocks by Volume	Price (USD)	YTD Volume (Shares)	YTD-15 Return
Bank Audi	5.93	20,991,328	(1.2%)
Bank Audi GDR	6.00	7,025,429	(8.4%)
Byblos Bank	1.63	6,972,287	1.9%
BLOM Bank	9.50	5,763,927	8.0%
Solidere A	10.99	3,232,799	(2.9%)

YTD-15 Return: Is a total return which accounts in addition to the change in price the cash & share dividends announced during the year.

Casablanca Stock Exchange Daily Report

(The Bulletin covers the 41 Stocks listed on the Main Market)

August 10, 2015

Index Performance relative to Volume



Market Breadth

▲ 7 ▼ 18 = 16

Top 10 Stocks by Market Capitalization

	Market Cap. (MAD Mn)	P/E (X)	ROE* (%)
1-Itissalat Al-Maghrib	103,294	17.7	36.8%
2-Attijariwafa Bank	71,461	16.4	12.3%
3-Banque Marocaine Du Commerce Exterieur	39,482	20.3	12.1%
4-Banque Centrale Populaire	39,225	17.9	6.9%
5-Ciments Du Maroc	18,334	22.9	12.7%
6-Wafa Assurances	13,475	17.3	19.9%
7-CIE Generale Immobiliere	10,677	NM	1.8%
8-Holcim Maroc	9,498	15.7	30.7%
9-Douja Prom Addoha	9,104	9.0	9.1%
10-Credit Immobilier Et Hotelier	8,331	17.3	10.1%
Subtotal	322,880	17.84	13.7%

*: ROE is based on Net Profit for the period FY-14 and Shareholders' equity as of 31-December-14

Today's Top Movers and Most Active Stocks

Best Return Performers	Price (MAD)	Daily Return
Societe Metallurgique D'Imiter	2,745.00	3.6%
Societe Nationale de Siderurgie	840.00	2.4%
Alliances Developpement Immobilier	53.60	1.1%
Lesieur Cristal	107.50	0.9%
Credit Immobilier Et Hotelier	313.10	0.4%

Worst Return Performers	Price (MAD)	Daily Return
Banque Marocaine Due Commerce Et De L'Industries	600.00	(5.3%)
Risma	185.15	(4.8%)
Fenie Brossette	122.00	(4.6%)
Miniere Touissit	1,122.00	(3.8%)
Compagnie d'Assurances et de Reassurances ATLANTA	59.20	(3.0%)

Most Active Stocks By Volume	Price (MAD)	Volume (Shrs)
Itissalat Al-Maghrib	117.50	258,030
Douja Prom Addoha	28.90	47,465
Delta Holding	26.51	30,000
Attijariwafa Bank	355.10	22,471
Banque Centrale Populaire	226.55	14,759

Source: KAMCO Research

Sectors' Return & Valuation Multiples

	Market Cap. (MAD Mn)	MTD % Chg	P/E (X)	P/B (X)	Yield (%)
Casablanca Stock Exchange	431,472	(0.2%)	21.8	2.0	3.3%
Banking	171,019	0.1%	17.9	1.7	2.7%
Beverages	1,782	(2.2%)	17.0	3.2	0.0%
Chemicals	283	(6.2%)	NM	0.6	0.0%
Construction & Bldg. Material	64,299	(1.1%)	22.9	4.2	2.1%
Distributors	9,249	(0.2%)	24.7	2.4	0.0%
Electrical & Electronic Equipment	357	(4.2%)	NM	0.0	0.0%
Electricity	1,225	(1.9%)	1.5	0.3	0.0%
Food Producers & Processors	3,704	0.4%	4.4	0.7	15.5%
Holding Companies	2,322	(4.6%)	15.2	2.0	4.8%
Insurance	21,320	0.2%	16.5	2.6	5.0%
Investment & other Finance	3,418	(3.4%)	13.8	1.6	3.0%
Leisures & Hotel	1,460	(2.6%)	NM	1.6	0.0%
Materials, Software & Computer	732	(1.9%)	10.0	0.6	3.9%
Mining	14,068	(0.9%)	23.5	2.5	2.3%
Oil & Gas	8,396	(1.7%)	NM	0.9	0.0%
Real Estate	20,449	0.1%	25.8	1.2	0.0%
Telecommunications	103,294	0.3%	17.7	6.5	5.9%
Transport	552	1.2%	14.2	2.0	0.0%
Utilities	3,503	(0.0%)	12.4	2.0	0.0%
Forestry & Paper	42	2.4%	NM	2.0	0.0%

Sectors' MTD Return is based on the Change in market cap. and it might not conform with the benchmark return for each sector

Market Return, Volatility & Trading Indicators

Market Return	Closing Value	DTD Chg	DTD % Chg	MTD % Chg	YTD-15 % Chg
MASI Index	9,716.22	(45.8)	(0.5%)	(0.2%)	1.0%
MADEX Index	7,968.49	(38.4)	(0.5%)	(0.2%)	1.6%
Market Cap (MAD Mn)	431,472	(2.9)	(0.7%)	(0.2%)	(0.1%)

Benchmark Volatility**	YTD-14	Since Jan-13	Since Jan-12	Since Jan-11	Since Jan-10
MASI Index	7.9%	8.3%	8.8%	9.8%	9.8%
MADEX Index	9.5%	8.4%	8.7%	9.1%	10.1%

**: Annualized Standard Deviation of Daily Returns

Trading Indicators	Today's Value	DTD Chg	DTD % Chg	Average Daily YTD-15	YTD-14
Volume ('000 Shares)	411.74	152.33	58.7%	622	516
Value Traded (MAD Mn)	31.08	14.21	84.2%	47	70

YTD-2015 Top Movers and Most Active Stocks

YTD Best Return Performers	Price (MAD)	Volume (Shrs)	YTD-15 Return
Compagnie de Transport au Maroc	450.30	34,843	38.6%
Ciments Du Maroc	1,270.00	274,491	35.1%
Hightech Payment Systems SA	485.50	28,596	30.5%
TAQA MOROCCO	548.00	590,580	28.9%
Holcim Maroc	2,256.00	153,153	18.5%

YTD Worst Return Performers	Price (MAD)	Volume (Shrs)	YTD-15 Return
Alliances Developpement Immobilier	53.60	2,362,799	(80.7%)
Marocaine de l'Industrie du Raffinage	127.80	431,324	(47.0%)
Societe Nationale d'Electrolyse et de Petrochimie	117.95	81,034	(43.0%)
Med Paper	16.39	488,202	(41.1%)
Fenie Brossette	122.00	21,262	(36.8%)

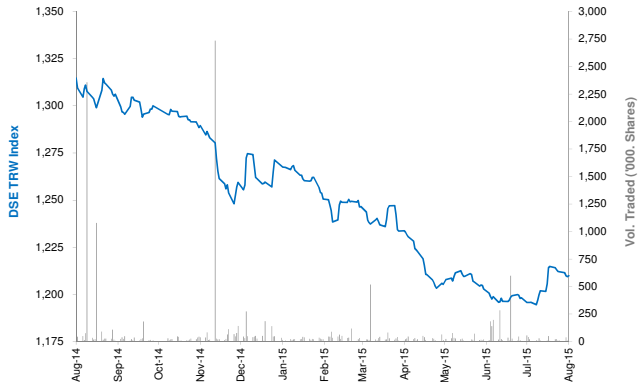
YTD Most Active Stocks by Volume	Price (MAD)	Volume ('000 Shrs)	YTD-15 Return
Douja Prom Addoha	28.90	34,584	(23.1%)
Itissalat Al-Maghrib	117.50	18,016	3.3%
Attijariwafa Bank	355.10	9,081	3.2%
Comp Suc Maroc Et De Raff	175.00	6,958	4.9%
Banque Marocaine Du Commerce Exterieur	220.00	6,388	0.0%

YTD-15 Return: accounts in addition to the chg in price the cash & share dividends announced during the year.

Damascus Securities Exchange Daily Report

August 10, 2015

Index Performance relative to Volume



Sectors' Return & Valuation Multiples

	Market Cap. (SRY Mn)	MTD % Chg	P/E (X)	P/B (X)	Yield (%)
Damascus SE	125,263	(0.2%)	4.9	0.9	0.3%
Banking	111,340	(0.2%)	4.71	0.84	0.0%
Services	1,470	0.0%	26.68	2.67	2.0%
Industrial	3,926	0.0%	6.62	1.58	0.0%
Insurance	7,988	0.0%	7.11	0.89	4.7%
Agricultural	539	0.0%	NM	3.81	0.0%

Sectors' MTD Return is based on the Change in market cap. and it might not conform with the benchmark return for each sector

Market Breadth

▲	1	▼	0	=	23
---	---	---	---	---	----

Top 10 Stocks by Market Capitalization

	Market Cap. (SRY Mn)	Trailing P/E (X)	ROE* (%)
1- Banque Bemo Saudi Fransi	16,950	7.3	20.6%
2- Qatar National Bank - Syria	14,793	1.8	23.5%
3- Bank Audi Syria	13,238	4.5	29.1%
4- Bank Of Syria And Overseas	9,400	4.7	25.7%
5- Arab Bank- Syria	9,301	NM	NM
6- The Int'l Bank For Trade & Finance	8,059	NM	0.1%
7- Syria International Islamic Bank	7,824	NM	NM
8- Byblos Bank Syria	7,650	7.0	13.7%
9- Al Baraka Bank - Syria	5,612	2.2	24.0%
10- Cham Bank	4,500	2.1	21.4%
Subtotal	92,826	4.90	17.5%

* ROE is based on FY-2014 Net Profit & Shareholders' Equity as of 31-December-14

Today's Top Movers & Most Active Stocks

Best Return Performers	Price (SRY)	Daily Return
Syria International Islamic Bank	92.05	0.6%

Worst Return Performers	Price (SRY)	Daily Return
No Losers		

Most Active Stocks by Volume	Price (SRY)	Volume (Shrs)
Syria International Islamic Bank	92.05	4,142
Qatar National Bank Syria	98.62	610
Cham Bank	90.00	300

Market Return, Volatility & Trading Indicators

Market Return	Closing Value	DTD Chg.	DTD % Chg.	MTD % Chg.	YTD-15 % Chg.
DSE Weighted Index	1,209.87	0.45	0.0%	(0.2%)	(4.8%)
Market Cap (SRY Mn)	125,263	47	0.0%	(0.2%)	(5.4%)

Benchmark Volatility	Since Jan-14	Since Jan-13	Since Jan-12
DSE Weighted Index	4.7%	9.9%	9.0%

** Annualized Standard Deviation of Daily Returns

Trading Indicators	Today's Value	DTD Chg.	DTD % Chg.	Average Daily YTD-15	YTD-14
Volume (Shrs)	5,052	(2,735)	(35.1%)	40,205	488
Value Traded ('000 SRY)	468	(311)	(39.9%)	5,520	20,073
No. of Trades	8	3.0	60.0%	23	47

YTD-2015 Top Movers & Most Active Stocks

YTD Best Return Performers	Price (SRY)	YTD Vol. (Shrs)	YTD-15 Return
Alahliah Vegetable Oil Company E.S.A	261.75	55,636	19.0%
United Insurance Co.	177.00	35,840	14.1%
Bank Al Sharq	135.00	31,505	3.6%
Bank Of Syria And Overseas	235.00	223,140	2.6%
Arab Bank- Syria	184.18	106,419	1.2%

YTD Worst Return Performers	Price (SRY)	YTD Vol. (Shrs)	YTD-15 Return
Qatar National Bank Syria	98.62	850,108	(17.6%)
National Insurance Company	118.25	170,750	(17.5%)
Syria International Islamic Bank	92.05	973,378	(16.1%)
Cham Bank	90.00	245,857	(13.7%)
Al Baraka Bank - Syria	112.23	977,239	(10.8%)

YTD Most Active Stocks by Volume	Price (SRY)	YTD Vol. (Shrs)	YTD-15 Return
Al Baraka Bank - Syria	112.23	977,239	(10.8%)
Syria International Islamic Bank	92.05	973,378	(16.1%)
Qatar National Bank Syria	98.62	850,108	(17.6%)
Bank Audi Syria	231.25	574,966	0.0%
Cham Bank	90.00	245,857	(13.7%)

Source: KAMCO Research

YTD-15 Return: Is a total return which accounts in addition to the change in price the cash & share dividends announced during the year.

Disclaimer & Important Disclosures

KAMCO is authorized and fully regulated by the Capital Markets Authority ("CMA") and partially regulated by the Central Bank of Kuwait ("CBK")

This document is provided for informational purposes only. Nothing contained in this document constitutes investment, an offer to invest, legal, tax or other advice or guidance and should be disregarded when considering or making investment decisions. In preparing this document, KAMCO did not take into account the investment objectives, financial situation and particular needs of any particular person. Accordingly, before acting on this document, investors should independently evaluate the investments and strategies referred to herein and make their own determination of whether it is appropriate in light of their own financial circumstances and objectives. The entire content of this document is subject to copyright with all rights reserved. This research and the information contained herein may not be reproduced, distributed or transmitted in Kuwait or in any other jurisdiction to any other person or incorporated in any way into another document or other material without our prior written consent.

Analyst Certification

Each of the analysts identified in this report certifies, with respect to the sector, companies or securities that the individual analyses, that (1) the views expressed in this report reflect his or her personal views about all of the subject companies and securities and (2) no part of his or her compensation was, is or will be directly or indirectly dependent on the specific recommendations or views expressed in this report.

KAMCO Ratings

KAMCO investment research is based on the analysis of regional and country economics, industries and company fundamentals. KAMCO company research reflects a long-term (12-month) target price for a company or stock. The ratings bands are:

- * **Outperform:** Target Price represents expected returns $\geq 10\%$ in the next 12 months
- * **Neutral:** Target Price represents expected returns between -10% and $+10\%$ in the next 12 months
- * **Underperform:** Target Price represents an expected return of $<-10\%$ in the next 12 months

In certain circumstances, ratings may differ from those implied by a fair value target using the criteria above. KAMCO policy is to maintain up-to-date fair value targets on the companies under its coverage, reflecting any material changes to the analyst's outlook on a company. Share price volatility may cause a stock to move outside the rating range implied by KAMCO's fair value target. Analysts may not necessarily change their ratings if this happens, but are expected to disclose the rationale behind their view to KAMCO clients.

Any terms and conditions proposed by you which are in addition to or which conflict with this Disclaimer are expressly rejected by KAMCO and shall be of no force or effect. The information contained in this document is based on current trade, statistical and other public information we consider reliable. We do not represent or warrant that such information is fair, accurate or complete and it should not be relied upon as such. KAMCO has no obligation to update, modify or amend this document or to otherwise notify a recipient thereof in the event that any opinion, forecast or estimate set forth herein, changes or subsequently becomes inaccurate. The publication is provided for informational uses only and is not intended for trading purposes. The information on publications does not give rise to any legally binding obligation and/or agreement, including without limitation any obligation to update such information. You shall be responsible for conducting your own investigation and analysis of the information contained or referred to in this document and of evaluating the merits and risks involved in the securities forming the subject matter of this or other such document. Moreover, the provision of certain data/information in the publication may be subject to the terms and conditions of other agreements to which KAMCO is a party.

Nothing in this document should be construed as a solicitation or offer, or recommendation, to acquire or dispose of any investment or to engage in any other transaction, or to provide any investment advice or service. This document is directed at Professional Clients and not Retail Clients within the meaning of CMA rules. Any other persons in receipt of this document must not rely upon or otherwise act upon it. Entities and individuals into whose possession this document comes are required to inform themselves about, and observe such restrictions and should not rely upon or otherwise act upon this document where it is unlawful to make to such person such an offer or invitation or recommendation without compliance with any authorization, registration or other legal requirements.

Risk Warnings

Any prices, valuations or forecasts are indicative and are not intended to predict actual results, which may differ substantially from those reflected. The value of an investment may go up as well as down. The value of and income from any investment may fluctuate from day to day as a result of changes in relevant economic markets (including, without limitation, foreseeable or unforeseeable changes in interest rates, foreign exchange rates, default rates, prepayment rates, political or financial conditions, etc.).

Past performance is not indicative of future results. Any opinions, estimates, valuations or projections (target prices and ratings in particular) are inherently imprecise and a matter of judgment. They are statements of opinion and not of fact, based on current expectations, estimates and projections, and rely on beliefs and assumptions. Actual outcomes and returns may differ materially from what is expressed or forecasted. There are no guarantees of future performance. Certain transactions, including those involving futures, options, and other derivatives, give rise to substantial risk and are not suitable for all investors. This document does not propose to identify or to suggest all of the risks (direct or indirect) which may be associated with the investments and strategies referred to herein.

Conflict of Interest

KAMCO and its affiliates provide full investment banking services, and they and their directors, officers and employees, may take positions which conflict with the views expressed in this document. Salespeople, traders, and other professionals of KAMCO may provide oral or written market commentary or trading strategies to our clients and our proprietary trading desks that reflect opinions that are contrary to the opinions expressed in this document. Our asset management area, our proprietary trading desks and investing businesses may make investment decisions that are inconsistent with the recommendations or views expressed in this document. KAMCO may have or seek investment banking or other business relationships for which it will receive compensation from the companies that are the subject of this document. Facts and views presented in this document have not been reviewed by, and may not reflect information known to, professionals in other KAMCO business areas, including investment banking personnel. United Gulf Bank, Bahrain owns majority of KAMCO's shareholding and this ownership may create, or may create the appearance of, conflicts of interest.

No Liability & Warranty

KAMCO makes neither implied nor expressed representations or warranties and, to the fullest extent permitted by applicable law, we hereby expressly disclaim any and all express, implied and statutory representations and warranties of any kind, including, without limitation, any warranty as to accuracy, timeliness, completeness, and fitness for a particular purpose and/or non-infringement. KAMCO will accept no liability in any event including (without limitation) your reliance on the information contained in this document, any negligence for any damages or loss of any kind, including (without limitation) direct, indirect, incidental, special or consequential damages, expenses or losses arising out of, or in connection with your use or inability to use this document, or in connection with any error, omission, defect, computer virus or system failure, or loss of any profit, goodwill or reputation, even if expressly advised of the possibility of such loss or damages, arising out of or in connection with your use of this document. We do not exclude our duties or liabilities under binding applicable law.



KAMCO Investment Company – K.S.C (Public)

Al-Shaheed Tower, Khalid Bin Al-Waleed Street- Sharq

P.O. BOX : 28873, Safat 13149, State of Kuwait

Tel: (+965) 1852626 Fax: (+965) 22492395

Email : Kamcoird@kamconline.com