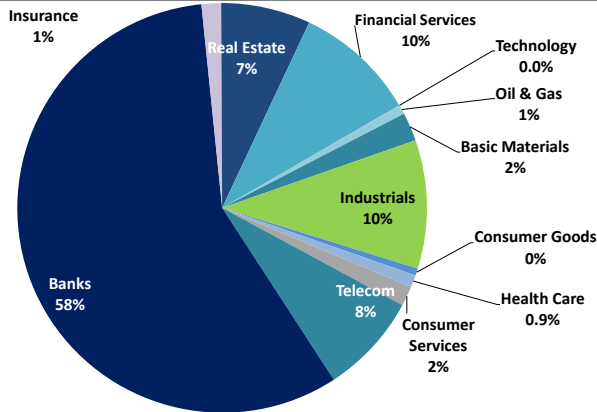


# Boursa Kuwait Daily Report

November 25, 2021

## Sector Weight by Market Cap



## Top 10 Companies by Market Capitalization

Company Name	Market Cap. (Mn KWD)	P/E (X)	ROE* (%)
1- National Bank of Kuwait	7,315.0	24.7	8.9%
2- Kuwait Finance House	7,040.3	36.4	10.3%
3- Ahli United Bank - Bahrain	2,888.3	21.1	10.8%
4- Zain	2,553.0	13.6	16.2%
5- Boubyan Bank	2,527.9	65.3	7.1%
6- Agility (PWC Logistics)	2,223.4	29.0	6.5%
7- Commercial Bank of Kuwait	996.0	55.6	2.3%
8- Mabanee Co.	937.1	20.2	9.3%
9- Gulf Bank	774.2	23.1	5.2%
10- Ahli United Bank - Kuwait	762.4	25.3	6.6%
<b>Total</b>	<b>28,018</b>	<b>26.50</b>	<b>9.0%</b>

\*: ROE is calculated based on TTM 1H-2021 net profit & shareholders' equity as of 30-June-21

## Top Movers and Most Active Stocks

Today's Top % Gainers	Close (KWD)	Change (KWD)	Percent Change
Palms Agro Production Co.	0.073	0.013	20.5%
Kuwait Hotels Co.	0.100	0.009	10.5%
Automated Systems Co.	0.106	0.006	6.0%
Gulf Insurance Group	1.110	0.058	5.5%
Arkan Al-Kuwait Real Estate Co.	0.146	0.006	4.3%




Today's Top % Losers	Close (KWD)	Change (KWD)	Percent Change
First Takaful Insurance Co.	0.062	(0.006)	(8.3%)
Warba Capital Holding Co.	0.101	(0.007)	(6.9%)
Kuwait Co. For Process Plant Const. & Cont	0.500	(0.029)	(5.5%)
MENA Real Estate Co.	0.063	(0.003)	(4.4%)
Salbookh Trading Co.	0.051	(0.002)	(3.9%)

Today's Most Active by Volume	Close (KWD)	Percent Change	Volume (Shares)
GFH Financial Group	0.092	(1.5%)	50,389,366
National Real Estate Co.	0.224	0.9%	22,672,630
Kuwait Real Estate Co.	0.180	0.6%	9,297,789
Gulf Petroleum Investment	0.029	0.3%	9,144,884
MENA Real Estate Co.	0.063	(4.4%)	9,136,929

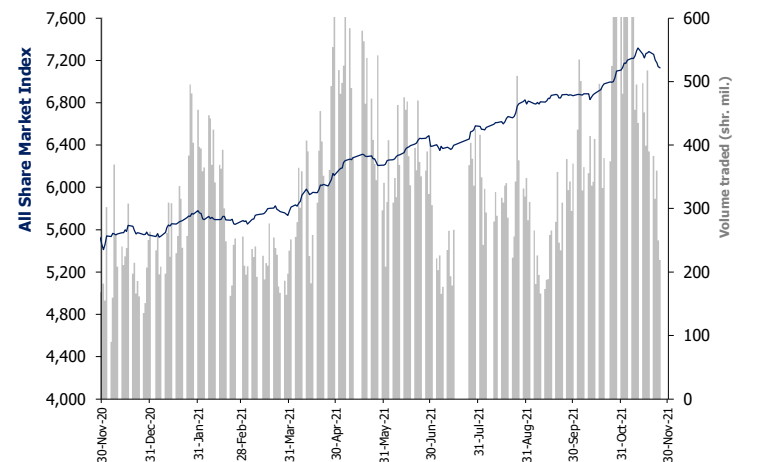
Source: Boursa Kuwait, Kamco Invest Research

## Market Capitalization - Sector Returns

	Market Cap. (KWD Mn)	DTD	DTD % Chg	MTD % Chg	YTD % Chg
<b>Boursa Kuwait</b>	<b>42,387.8</b>	<b>▼</b>	<b>(0.2%)</b>	<b>0.7%</b>	<b>28.5%</b>
Oil & Gas	301.3	▲	0.1%	(0.8%)	7.5%
Basic Materials	948.6	▼	(0.2%)	(3.3%)	18.4%
Industrials	4,277.7	▼	(0.4%)	(0.3%)	34.7%
Consumer Goods	234.2	▼	(0.6%)	(4.2%)	0.9%
Health Care	396.1	▲	0.1%	0.5%	(3.4%)
Consumer Services	672.7	▼	(0.2%)	6.1%	60.4%
Telecommunications	3,344.6	▼	(0.2%)	(1.1%)	(1.0%)
Banks	24,253.2	▼	(0.2%)	1.3%	29.0%
Insurance	643.4	▲	2.4%	7.8%	50.3%
Real Estate	2,978.1	▼	(0.1%)	(0.4%)	45.0%
Financial Services	4,064.5	▼	(0.4%)	(0.6%)	50.4%
Technology	10.6	▲	6.0%	0.0%	53.4%
Utilities	262.9	▲	0.4%	1.3%	-13.7%

Market Breadth		46		74		47
Benchmark Return	Closing	DTD	DTD	MTD	YTD	
	Value	Chg	% Chg	% Chg	% Chg	
Premier Market Index	7,719.97	(14.8)	(0.2%)	0.4%	27.6%	
Main 50 Index	6,162.70	(24.8)	(0.4%)	(0.1%)	32.9%	
Main Market Index	5,983.82	(6.7)	(0.1%)	0.1%	31.4%	
All Share Market Index	7,128.21	(12.3)	(0.2%)	0.3%	28.5%	
Market Cap (KWD Mn)	42,387.79	(75.6)	(0.2%)	0.7%	28.5%	

## Index Performance relative to Volume



## Market Trading Data and Volatility

Trading Indicators	Today's Value	DTD Chg	DTD % Chg	Average Daily YTD 2021	YTD 2020
Volume (Shrs Mn)	219.0	(31.0)	(12.4%)	352.4	208.7
Value Traded (KWD Mn)	37.9	(14.81)	(28.1%)	55.3	40.4
No. of Trades	9,249	(2,156)	(18.9%)	12,646	9,468

Today's Most Active by Value	Close (KWD)	Percent Change	Value (KWD)
National Real Estate Co.	0.224	0.9%	5,087,485
GFH Financial Group	0.092	(1.5%)	4,670,267
Agility (PWC Logistics)	0.997	(0.3%)	2,185,256
National Bank of Kuwait	1.017	(0.1%)	1,978,460
National Investment Co.	0.231	(0.9%)	1,803,749

## Boursa Kuwait - Premier Market

Thursday, November 25, 2021

	Premier Market Stocks	Closing Price			Market Capitalization			Valuation Multiples				ROE	YTD-21 Price Return	YTD-21 Trading Indicators	
		KWD	DTD Chg. (KWD)	D-T-D Return	KWD Mn	Weight in Premier Index	Weight in Boursa Kuwait	P/E (X)	P/BV (X)	Yield	Beta			Volume (Mn Shrs)	Value (KWD Mn)
▼	National Bank of Kuwait	1.017	(0.001)	(0.1%)	7,315	23.1%	17.3%	24.7	2.19	1.8%	1.27	8.9%	27.1%	1,101.25	967.90
▼	Gulf Bank	0.254	(0.001)	(0.4%)	774	2.4%	1.8%	23.1	1.20	1.9%	1.13	5.2%	16.0%	2,337.56	541.65
▼	Kuwait International Bank	0.220	(0.001)	(0.5%)	249	0.8%	0.6%	NM	0.96	0.0%	1.01	0.8%	5.8%	1,118.96	244.96
=	Burgan Bank	0.226	0.000	0.0%	708	2.2%	1.7%	20.3	1.04	1.9%	1.05	5.1%	26.6%	558.64	125.44
▼	Kuwait Finance House	0.834	(0.001)	(0.1%)	7,040	22.3%	16.6%	36.4	3.76	1.1%	1.40	10.3%	35.5%	1,384.52	1,057.56
▼	Boubyan Bank	0.795	(0.001)	(0.1%)	2,528	8.0%	6.0%	65.3	4.67	0.0%	1.05	7.1%	47.0%	264.59	177.76
▼	National Investments Co	0.231	(0.002)	(0.9%)	202	0.6%	0.5%	8.3	1.07	4.3%	1.25	12.8%	71.1%	468.10	86.78
▲	Kuwait Projects Co. (Holding)	0.151	0.001	0.7%	302	1.0%	0.7%	NM	1.46	3.3%	0.58	0.3%	(5.0%)	378.46	57.30
▼	Al Imtiaz Investment Group	0.123	(0.001)	(0.8%)	139	0.4%	0.3%	NM	0.75	0.0%	0.98	NM	9.8%	1,215.31	150.85
▲	Kuwait Real Estate Co.	0.180	0.001	0.6%	171	0.5%	0.4%	34.9	1.32	0.0%	0.97	3.8%	73.4%	2,213.23	311.46
=	Mabane Co.	0.800	0.000	0.0%	937	3.0%	2.2%	20.2	1.88	0.7%	1.11	9.3%	29.1%	147.18	107.52
=	National Industries Group (Holding)	0.279	0.000	0.0%	398	1.3%	0.9%	7.2	1.04	0.0%	1.44	14.5%	58.5%	1,548.09	353.03
▼	Gulf Cable and Electrical Industries	0.955	(0.010)	(1.0%)	200	0.6%	0.5%	35.8	1.08	5.2%	0.94	3.0%	26.5%	62.84	51.67
=	Boubyan Petrochemical Co.	0.900	0.000	0.0%	481	1.5%	1.1%	25.6	2.12	5.9%	0.72	8.3%	40.6%	104.93	90.37
▼	Qurain Petrochemicals Industries Co.	0.360	(0.001)	(0.3%)	396	1.3%	0.9%	28.9	0.95	4.2%	0.75	3.3%	6.5%	142.50	54.56
▼	Agility Public Warehousing Co.	0.997	(0.003)	(0.3%)	2,223	7.0%	5.2%	29.0	1.90	0.9%	1.48	6.5%	62.2%	705.41	635.47
▼	Mobile Telecommunications Co.	0.590	(0.001)	(0.2%)	2,553	8.1%	6.0%	13.6	2.21	3.4%	1.35	16.2%	(2.6%)	689.29	418.21
▼	Human Soft Holding Co.	3.250	(0.044)	(1.3%)	397	1.3%	0.9%	5.9	3.74	12.2%	0.49	63.0%	(14.5%)	53.34	190.87
▼	ALAFCO Aviation Lease and Finance Co.	0.244	(0.001)	(0.4%)	232	0.7%	0.5%	NM	0.78	0.0%	0.87	NM	13.0%	489.39	110.84
▼	Ahli United Bank (B.S.C)	0.285	(0.001)	(0.3%)	2,888	9.1%	6.8%	21.1	2.29	1.3%	1.13	10.8%	30.7%	3,428.36	815.19
▼	Warba Bank	0.287	(0.002)	(0.7%)	574	1.8%	1.4%	21.6	2.89	0.0%	1.00	13.4%	21.6%	672.59	175.85
▼	Mezzan Holding Co.	0.602	(0.003)	(0.5%)	191	0.6%	0.5%	19.0	1.72	2.9%	0.44	9.1%	1.0%	103.85	63.87
=	Integrated holding Co.	0.385	0.000	0.0%	97	0.3%	0.2%	NM	1.61	0.0%	0.47	NM	5.2%	289.76	113.31
▲	Shamal Az-Zour Al-Oula Power and Water	0.239	0.001	0.4%	263	0.8%	0.6%	20.7	5.00	5.0%	0.65	24.2%	(13.7%)	422.28	105.30
▼	Boursa Kuwait Securities Co.	1.893	(0.022)	(1.1%)	380	1.2%	0.9%	13.6	7.22	2.1%	0.75	53.2%	72.1%	92.13	127.49
Subtotal- Premier Market Stocks		7,719.97	(14.81)	-0.2%	31,641	100%	75%	24.4	2.22	1.70%		9.1%	27.6%	19,992.56	7,135.24
Remaining of the Market					10,746		25%	54.3	1.14	1.26%		2.1%		57,544.98	5,039.13

Source: Kamco Invest Research

# Boursa Kuwait Daily Bulletin

Thursday, November 25, 2021

Company	Reuters Ticker	Valuation Multiples				Price (KWD)		MKT Cap (KWD Mn.)	52 Weeks High (KWD)	52 Weeks Low (KWD)	YTD-21 Return #	Daily Trading Data		YTD-21 Capital Turnover	ROE
		Trailing P/E (X)	Trailing P/BV (X)	Dividend Yield	Beta	Closing	DTD Change					Volume (Shrs.)	Value (KWD)		
▲ Senergy Holding Co.	SENE.KW	NM	1.08	0.00%	1.12	0.053	0.000	10.6	0.063	0.021	149.5%	347,161	17,872	178.2%	NM
= Independent Petroleum Group	IPGK.KW	16.1	1.15	4.70%	0.26	0.612	0.000	115.3	0.669	0.447	28.8%	0	0	1.8%	7.2%
▲ National Petroleum Services Co.	NAPS.KW	14.4	2.22	7.66%	0.20	0.810	0.020	81.0	1.150	0.709	(22.8%)	1	1	1.4%	15.4%
▼ The Energy House Co.	ENER.KW	24.5	2.10	0.00%	0.96	0.057	(0.001)	42.8	0.086	0.025	100.7%	170,100	9,394	9.6%	8.6%
▲ Gulf Petroleum Investment	GPIK.KW	NM	0.40	0.00%	1.08	0.029	0.000	13.1	0.031	0.018	48.7%	9,144,884	264,359	392.4%	NM
▼ Burgan Co. for Drilling, Tdg. & Maint. *	ABAR.KW	15.3	0.58	1.82%	NA	0.159	(0.005)	38.6	0.201	0.123	2.6%	399,200	62,966	150.1%	3.8%
<b>Oil &amp; Gas</b>		<b>30.5</b>	<b>1.13</b>	<b>4.09%</b>				<b>301.3</b>			<b>7.5%</b>	<b>10,061,346</b>	<b>354,591</b>		<b>3.7%</b>
▼ Kuwait Foundry Co.	KFDC.KW	NM	1.83	1.94%	0.62	0.360	(0.005)	26.0	0.430	0.258	34.3%	100,000	36,012	13.9%	NM
= Boubyan Petrochemicals Co.*	BPCCKW	25.6	2.12	5.94%	0.72	0.900	0.000	481.3	0.987	0.625	40.6%	271,202	244,191	19.6%	8.3%
= Al Kout for Industrial Projects Co.	ALKK.KW	NM	1.88	4.43%	0.03	0.451	0.000	45.5	0.675	0.449	(33.2%)	0	0	0.0%	NM
▼ Qurain Petrochemical Industries Co. *	ALQK.KW	28.9	0.95	4.21%	0.75	0.360	(0.001)	395.7	0.447	0.334	6.5%	426,663	153,641	13.0%	3.3%
<b>Basic Materials</b>		<b>30.9</b>	<b>1.39</b>	<b>5.04%</b>				<b>948.6</b>			<b>18.4%</b>	<b>797,865</b>	<b>433,843</b>		<b>4.5%</b>
▲ Specialities Group Holding Co.	SPEC.KW	55.0	0.77	0.00%	0.44	0.139	0.001	22.9	0.169	0.073	77.5%	101,970	14,068	302.3%	1.4%
▲ Kuwait Cement Co.	KCEM.KW	NM	0.94	0.00%	0.52	0.245	0.004	179.7	0.266	0.215	6.1%	22,664	5,459	9.2%	NM
▼ Gulf Cable & Electrical Ind. Co.	CABL.KW	35.8	1.08	5.24%	0.94	0.955	(0.010)	200.5	1.011	0.728	26.5%	258,628	247,836	29.9%	3.0%
▼ Heavy Eng'g Ind. & Shipbuilding Co.	SHIP.KW	11.9	1.28	4.31%	0.59	0.464	(0.003)	83.6	0.524	0.392	16.9%	204,110	94,499	79.7%	10.7%
= Kuwait Portland Cement Co.	PCEM.KW	13.3	1.43	4.04%	0.46	0.990	0.000	99.2	1.050	0.766	26.1%	37,931	37,573	15.2%	10.7%
= Shuaiba Industrial Co.	PAPE.KW	17.7	1.29	4.29%	0.13	0.230	0.000	23.2	0.230	0.145	48.4%	0	0	5.0%	7.3%
= Metal & Recycling Co.	MRCK.KW	NM	1.60	0.00%	0.20	0.107	0.000	12.6	0.196	0.051	101.5%	0	0	14.5%	NM
▼ ACICO Industries Co.	ACIC.KW	NM	0.54	0.00%	0.38	0.134	(0.002)	40.4	0.146	0.082	49.1%	943,928	128,288	74.6%	NM
= Hilal Cement Co.	HCCCKW	NM	0.74	0.00%	0.10	0.141	0.000	7.1	0.180	0.069	54.9%	0	0	2.3%	NM
= National Industries Co.	NIBM.KW	22.5	0.81	0.00%	0.17	0.195	0.000	72.6	0.218	0.150	25.0%	0	0	4.4%	3.6%
▲ Equipment Holding Co.	EQUI.KW	NM	0.98	0.00%	1.02	0.067	0.001	5.4	0.079	0.027	126.0%	145,900	9,546	233.7%	NM
▲ National Co. for Consumer Industries	NCCI.KW	NM	1.65	0.00%	NA	0.131	0.001	11.8	0.198	0.038	167.9%	1,079,804	144,240	693.3%	NM
▼ Salbookh Trading Co.	SALB.KW	NM	0.96	0.00%	0.59	0.051	(0.002)	5.4	0.072	0.035	36.1%	337,238	17,332	237.4%	NM
▼ Agility (PWC Logistics)	AGLT.KW	29.0	1.90	0.87%	1.48	0.997	(0.003)	2,223.4	1.090	0.592	62.2%	2,187,785	2,185,256	31.6%	6.5%
▲ Educational Holding Group*	EDUK.KW	7.8	1.51	0.00%	0.47	0.598	0.024	57.0	0.900	0.433	82.3%	15,453	9,215	21.2%	19.5%
▼ National Cleaning Co.	CLEA.KW	NM	0.46	0.00%	0.79	0.062	(0.002)	15.5	0.080	0.045	16.1%	213,810	13,300	117.4%	NM
▼ Kuwait & Gulf Link Transport Co.	KGLK.KW	NM	0.50	0.00%	0.78	0.071	(0.003)	20.7	0.106	0.044	34.7%	973,947	69,700	70.8%	NM
▼ Kuwait Co. For Process Plant Const. & Cont.	KCPC.KW	7.9	1.91	8.31%	0.47	0.500	(0.029)	57.9	0.629	0.367	30.3%	3,077	1,539	25.5%	24.3%
▼ Humansoft Holding Co.	HUMN.KW	5.9	3.74	12.25%	0.49	3.250	(0.044)	397.3	4.030	3.200	(14.5%)	96,375	314,867	43.6%	63.0%
▼ Gulf Franchising Co.	GFCI.KW	6.7	1.64	0.00%	NA	0.088	(0.001)	3.5	0.115	0.032	47.3%	1,660	136	4.2%	24.6%
= National Shooting Co.	SHOOTING.KW	NM	0.71	0.00%	1.20	0.039	0.000	10.9	0.043	0.019	108.6%	0	0	98.6%	NM
▼ Combined Group Contracting Co.	CGCK.KW	NM	1.56	1.70%	0.65	0.353	(0.001)	60.6	0.399	0.196	75.6%	247,617	87,297	93.1%	NM
= United Projects Group	UPAC.KW	NM	1.08	0.00%	0.05	0.287	0.000	109.8	0.365	0.186	(1.0%)	0	0	8.8%	0.9%
▼ ALAFCO Aviation Lease & Finance Co.*	ALAF.KW	NM	0.78	0.00%	0.87	0.244	(0.001)	232.3	0.256	0.198	13.0%	558,239	136,150	51.4%	NM
▼ Mubarrad Holding Co.	MBRD.KW	29.7	0.93	0.00%	0.95	0.117	(0.001)	19.2	0.130	0.063	63.6%	181,429	21,152	252.5%	3.1%
= KGL Logistics Co.	LOGK.KW	NM	0.25	0.00%	0.77	0.032	0.000	23.4	0.034	0.027	12.8%	0	0	21.7%	NM
= Integrated holding Co.	INTEGRATED.KW	NM	1.61	0.00%	0.47	0.385	0.000	97.4	0.399	0.310	5.2%	383,280	146,706	114.5%	NM
= Umm Al-Qaiwain General Investments Co.	QIC.KW	9.9	0.67	5.05%	0.18	0.099	0.000	35.9	0.099	0.063	32.0%	0	0	1.2%	6.8%
▼ Fujairah Cement Industries Co.	FCEM.KW	NM	0.26	0.00%	0.47	0.053	(0.002)	18.7	0.069	0.028	53.5%	1,157,759	61,311	21.8%	NM
= Ras-Al-Khaimah for White Cement Co.	RKWC.KW	30.4	1.12	3.60%	0.14	0.139	0.000	69.5	0.175	0.061	113.8%	0	0	4.8%	3.7%
= Jassim Transport & Stevedoring Co.	JTC.KW	26.3	1.45	4.96%	NA	0.403	0.000	60.5	0.450	0.395	0.0%	153,950	62,322	26.3%	5.5%
<b>Industrials</b>		<b>33.0</b>	<b>1.41</b>	<b>2.35%</b>				<b>4,277.7</b>			<b>34.7%</b>	<b>9,306,554.0</b>	<b>3,807,792</b>		<b>4.3%</b>

# Boursa Kuwait Daily Bulletin

Thursday, November 25, 2021

Company	Reuters Ticker	Valuation Multiples				Price (KWD)		MKT Cap (KWD Mn.)	52 Weeks High (KWD)	52 Weeks Low (KWD)	YTD-21 Return #	Daily Trading Data		YTD-21 Capital Turnover	ROE
		Trailing P/E (X)	Trailing P/BV (X)	Dividend Yield	Beta	Closing	DTD Change					Volume (Shrs.)	Value (KWD)		
▲ Palms Agro Production Co.	PAPK.KW	NM	0.65	0.00%	0.27	0.073	0.013	3.8	0.090	0.050	13.6%	10,417	700	2.2%	NM
▼ Livestock Transport & Trading Co.	CATT.KW	NM	1.00	0.00%	0.26	0.181	(0.005)	39.2	0.210	0.177	2.8%	415,890	75,411	11.5%	NM
▼ Mezzan Holding Co.	MEZZ.KW	19.0	1.72	2.88%	0.44	0.602	(0.003)	191.2	0.679	0.554	1.0%	715,818	431,655	32.7%	9.1%
<b>Consumer Goods</b>		<b>34.5</b>	<b>1.50</b>	<b>2.35%</b>				<b>234.2</b>			<b>0.9%</b>	<b>1,142,125</b>	<b>507,766</b>		<b>4.4%</b>
▲ Advanced Technology Co.	ATCK.KW	13.6	1.25	2.87%	0.00	0.523	0.003	78.5	0.600	0.401	(8.2%)	1,000	523	1.0%	9.2%
= Yiacco Medical Co.	YIAC.KW	NM	4.58	0.00%	NA	0.448	0.000	7.7	0.825	0.403	(46.7%)	0	0	1.4%	NM
= Al-Maidan Clinic For Oral Health Services Co.	MIDAN.KW	31.6	19.05	0.81%	NA	1.240	0.000	310.0	1.240	1.200	0.0%	0	0	0.1%	60.3%
<b>Health Care</b>		<b>25.7</b>	<b>4.91</b>	<b>1.20%</b>				<b>396.1</b>			<b>(3.4%)</b>	<b>1,000</b>	<b>523</b>		<b>19.1%</b>
= Kuwait National Cinema Co.	KCIN.KW	NM	1.35	0.00%	0.31	0.900	0.000	91.0	0.990	0.700	20.0%	0	0	1.4%	NM
▲ Kuwait Hotels Co.	KHOT.KW	11.3	1.34	0.00%	NA	0.100	0.009	5.8	0.113	0.050	67.9%	12,058	1,205	20.1%	11.8%
▼ Sultan Center Food Products Co.	SCFK.KW	46.5	1.37	0.00%	0.43	0.221	(0.008)	64.0	0.269	0.097	121.0%	1,607,811	363,222	68.2%	3.0%
▼ IFA Hotels & Resorts Co.*	IFAH.KW	NM	8.82	0.00%	0.30	0.063	(0.001)	40.3	0.073	0.019	225.1%	390,882	24,922	139.0%	NM
▲ Oula Fuel Marketing Co.	OULA.KW	13.7	0.94	3.06%	0.47	0.161	0.002	65.1	0.178	0.114	30.9%	85,252	13,674	23.9%	6.9%
= Kuwait Resorts Co.	MUNK.KW	29.8	0.73	1.98%	0.71	0.101	0.000	21.2	0.112	0.060	59.8%	603,596	61,039	203.0%	2.4%
▼ Jazeera Airways Co.	JAZK.KW	NM	183.10	0.00%	0.72	1.200	(0.008)	240.0	1.345	0.588	64.4%	274,266	331,132	51.2%	NM
= Soor Fuel Marketing Co.	SOOR.KW	18.1	1.00	3.14%	0.47	0.158	0.000	63.9	0.175	0.116	29.5%	6,800	1,073	11.7%	5.5%
▲ Future Kid Entertainment and R.E Co.	KIDK.KW	NM	0.84	0.00%	0.03	0.082	0.001	9.5	0.122	0.064	(3.5%)	322,264	26,394	185.8%	NM
▲ Jiyad Holding Co	JIYAD.KW	NM	0.88	0.00%	0.64	0.093	0.003	32.4	0.099	0.036	108.8%	363,002	32,982	41.1%	NM
▲ Al Eid Food Co.	ALEID.KW	21.2	1.99	1.53%	NA	0.273	0.002	39.5	0.310	0.069	294.7%	120,242	32,498	120.9%	9.4%
<b>Consumer Services</b>		<b>NM</b>	<b>1.90</b>	<b>0.75%</b>				<b>672.7</b>			<b>60.4%</b>	<b>3,786,173</b>	<b>888,141</b>		<b>NM</b>
▼ Zain	ZAIN.KW	13.6	2.21	3.39%	1.35	0.590	(0.001)	2,553.0	0.641	0.581	(2.6%)	2,458,739	1,453,492	15.9%	16.2%
▼ National Mobile Telecom Co.	OORE.KW	38.5	0.63	2.24%	0.47	0.665	(0.004)	335.2	0.711	0.620	6.1%	538	360	1.8%	1.6%
▼ AAN digital services Co.	AAN.KW	NM	0.71	0.00%	1.32	0.019	(0.000)	16.7	0.020	0.011	54.0%	6,508,094	125,368	339.6%	NM
▲ Kuwait Telecommunication Co.	STC.KW	13.1	2.06	6.98%	0.55	0.860	0.001	429.5	0.970	0.822	0.9%	14,004	12,045	5.1%	15.7%
= Hayat Communications Co.	HAYK.KW	NM	0.95	0.00%	1.14	0.111	0.000	10.3	0.124	0.051	98.2%	1,500	164	154.5%	NM
<b>Telecommunications</b>		<b>14.7</b>	<b>1.73</b>	<b>3.71%</b>				<b>3,344.6</b>			<b>(1.0%)</b>	<b>8,982,875</b>	<b>1,591,428</b>		<b>11.8%</b>
▼ National Bank of Kuwait	NBKK.KW	24.7	2.19	1.85%	1.27	1.017	(0.001)	7,315.0	1.057	0.792	27.1%	1,943,027	1,978,460	15.3%	8.9%
▼ Gulf Bank	GBKK.KW	23.1	1.20	1.87%	1.13	0.254	(0.001)	774.2	0.265	0.205	16.0%	2,415,692	615,496	76.7%	5.2%
= Commercial Bank of Kuwait	CBKK.KW	55.6	1.30	0.00%	0.38	0.500	0.000	996.0	0.605	0.485	0.0%	0	0	3.6%	2.3%
= Ahli Bank of Kuwait	ABKK.KW	NM	0.82	0.00%	0.65	0.246	0.000	418.2	0.264	0.186	23.6%	4,578,704	1,126,399	12.7%	NM
▼ Ahli United Bank - Kuwait	BKME.KW	25.3	1.66	0.00%	0.85	0.320	(0.004)	762.4	0.332	0.258	21.8%	2,220,641	712,220	5.4%	6.6%
▼ Kuwait International Bank	KIBK.KW	NM	0.96	0.00%	1.01	0.220	(0.001)	249.2	0.233	0.198	5.8%	6,931,562	1,520,054	98.8%	0.8%
= Burgan Bank	BURG.KW	20.3	1.04	1.85%	1.05	0.226	0.000	707.7	0.240	0.195	26.6%	2,010,060	453,015	17.8%	5.1%
▼ Kuwait Finance House	KFH.KW	36.4	3.76	1.08%	1.40	0.834	(0.001)	7,040.3	0.849	0.611	35.5%	2,147,911	1,793,000	16.4%	10.3%
▼ Boubyan Bank	BOUK.KW	65.3	4.67	0.00%	1.05	0.795	(0.001)	2,527.9	0.835	0.516	47.0%	408,084	326,011	8.3%	7.1%
▼ Warba Bank	WARB.KW	21.6	2.89	0.00%	1.00	0.287	(0.002)	574.0	0.298	0.210	21.6%	753,744	216,867	33.6%	13.4%
▼ Ahli United Bank - Bahrain	AUBK.KW	21.1	2.29	1.28%	1.13	0.285	(0.001)	2,888.3	0.297	0.204	30.7%	1,658,858	473,813	33.8%	10.8%
<b>Banks</b>		<b>31.9</b>	<b>2.30</b>	<b>1.14%</b>				<b>24,253.2</b>			<b>29.0%</b>	<b>25,068,283</b>	<b>9,215,334</b>		<b>7.2%</b>



# Boursa Kuwait Daily Bulletin

Thursday, November 25, 2021

Company	Reuters Ticker	Valuation Multiples				Price (KWD)		MKT Cap (KWD Mn.)	52 Weeks High (KWD)	52 Weeks Low (KWD)	YTD-21 Return #	Daily Trading Data		YTD-21 Capital Turnover	ROE
		Trailing P/E (X)	Trailing P/BV (X)	Dividend Yield	Beta	Closing	DTD Change					Volume (Shrs.)	Value (KWD)		
▲ Kuwait Insurance Co.	KINS.KW	7.3	0.72	7.27%	0.01	0.393	0.001	76.3	0.459	0.360	2.1%	65,105	25,391	12.4%	9.9%
▲ Gulf Insurance Group	GINS.KW	17.3	2.44	0.00%	0.07	1.110	0.058	315.9	1.200	0.536	37.5%	119,389	131,852	2.3%	14.1%
= Ahleiah Insurance Co.	AINS.KW	8.1	0.88	4.85%	0.13	0.483	0.000	106.5	0.561	0.419	7.9%	0	0	6.0%	10.8%
▼ Warba Insurance Co.	WINS.KW	10.8	0.71	4.76%	0.37	0.152	(0.005)	28.0	0.176	0.077	88.2%	285,010	43,268	98.7%	6.5%
= Kuwait Reinsurance Co.	KWRE.KW	13.5	1.26	1.34%	0.14	0.345	0.000	76.0	0.527	0.212	78.3%	0	0	0.1%	9.4%
▼ First Takaful Insurance Co.	FTIK.KW	NM	0.83	0.00%	0.34	0.062	(0.006)	6.6	0.081	0.034	67.6%	4,751	294	9.0%	NM
▼ Wethaq Takaful Insurance Co.	WETH.KW	30.5	0.56	0.00%	0.45	0.062	(0.001)	6.8	0.102	0.020	203.4%	838,200	52,743	331.2%	1.8%
= Bahrain Kuwait Insurance Co.	BKIK.KW	8.7	0.85	7.85%	0.02	0.191	0.000	27.3	0.000	0.000	(4.5%)	0	0	0.0%	9.7%
<b>Insurance</b>		<b>12.3</b>	<b>1.27</b>	<b>2.36%</b>				<b>643.4</b>			<b>50.3%</b>	<b>1,312,455</b>	<b>253,547</b>		<b>10.3%</b>
= Sokouk Holding Co.	SHCK.KW	NM	0.81	0.00%	1.15	0.034	0.000	20.2	0.038	0.022	45.9%	477,993	16,205	109.0%	NM
▲ Kuwait Real Estate Co.	KREK.KW	34.9	1.32	0.00%	0.97	0.180	0.001	170.5	0.193	0.100	73.4%	9,297,789	1,662,605	233.6%	3.8%
▼ United Real Estate Co.	UREK.KW	NM	0.54	0.00%	0.41	0.080	(0.001)	95.5	0.085	0.043	71.1%	629,570	50,085	11.9%	NM
▲ National Real Estate Co.	NREK.KW	37.0	1.34	0.00%	1.19	0.224	0.002	369.8	0.242	0.071	243.1%	22,672,630	5,087,485	141.6%	3.6%
▼ Salhia Real Estate Co.	SREK.KW	67.1	1.82	5.28%	0.34	0.548	(0.002)	281.0	0.607	0.501	8.9%	692,321	374,920	15.6%	2.7%
▼ Tamdeen Real Estate Co.	TAMK.KW	NM	0.85	0.00%	0.13	0.334	(0.007)	144.3	0.374	0.235	23.7%	45,350	15,112	6.3%	NM
▲ Ajial Real Estate Entertainment Co.	AREC.KW	21.5	0.48	0.00%	0.49	0.317	0.001	61.7	0.345	0.170	73.2%	213	68	15.6%	2.2%
▲ Al Massaleh Real Estate Co.	MREC.KW	NM	0.64	0.00%	0.28	0.055	0.002	12.9	0.085	0.030	60.5%	225,030	11,875	22.9%	NM
▼ Arab Real Estate Co.	ARAB.KW	18.8	0.45	0.00%	1.20	0.046	(0.001)	23.6	0.052	0.025	79.8%	310,145	14,264	106.8%	2.4%
▼ AL-Enma'a Real Estate Co.*	ENMA.KW	NM	0.83	0.00%	0.68	0.081	(0.001)	36.4	0.091	0.047	67.5%	1,052,345	84,364	113.6%	0.4%
= Mabanee Co.	MABK.KW	20.2	1.88	0.71%	1.11	0.800	0.000	937.1	0.868	0.611	29.1%	456,821	365,908	12.6%	9.3%
= Injazzat Real Estate Development Co.	INJA.KW	NM	0.69	0.00%	0.20	0.106	0.000	36.6	0.113	0.067	42.3%	51	5	120.6%	0.6%
= Investors Holding Group Co.	INVK.KW	NM	0.76	0.00%	1.20	0.015	0.000	9.5	0.020	0.013	(12.6%)	1,587,638	24,190	305.8%	NM
= The Commercial Real Estate Co.	TIJK.KW	60.8	0.87	2.17%	0.57	0.132	0.000	243.0	0.140	0.091	19.4%	566,654	74,447	48.7%	1.4%
▲ Sanam Real Estate Co.	SANK.KW	NM	1.19	0.00%	0.39	0.091	0.004	11.1	0.094	0.028	162.9%	235,097	21,077	72.5%	NM
▼ A'ayan Real Estate Co.	AYRE.KW	NM	0.68	0.00%	0.59	0.095	(0.000)	39.7	0.116	0.057	64.5%	813,191	77,587	134.9%	NM
▼ Aqar Real Estate Investment Co.	AQAR.KW	NM	0.78	0.00%	NA	0.084	(0.002)	20.5	0.098	0.058	41.5%	110,010	9,244	102.7%	NM
▲ Kuwait Real Estate Holding Co.	ALAQ.KW	11.0	0.97	0.00%	0.52	0.053	0.000	10.1	0.059	0.024	111.6%	47,693	2,434	62.3%	8.9%
▼ MAZAYA Holding Co.	MAZA.KW	NM	0.83	0.00%	0.99	0.079	(0.000)	54.1	0.122	0.056	37.4%	1,792,197	141,023	402.8%	NM
▼ Tijara Real Estate & Investment Co.	TJJA.KW	47.3	0.60	0.00%	0.32	0.064	(0.001)	23.5	0.073	0.042	51.2%	318,161	20,334	214.6%	1.3%
▼ Al TAMEER Real Estate Investment Co.	AMAR.KW	24.5	0.74	0.00%	0.97	0.047	(0.001)	11.3	0.054	0.018	135.0%	743,136	34,789	262.8%	3.0%
▲ Arkan Al-Kuwait Real Estate Co. *	ARKK.KW	21.9	1.09	2.74%	0.24	0.146	0.006	36.7	0.152	0.086	72.2%	300,000	43,229	15.3%	5.0%
▼ Al-Argan International Real Estate Co.	ARGK.KW	NM	0.38	0.00%	0.38	0.112	(0.004)	29.7	0.124	0.091	1.8%	10,000	1,126	1.4%	NM
▼ Munshaat Real Estate Projects Co.	MUNS.KW	NM	2.43	0.00%	0.63	0.069	(0.001)	22.1	0.121	0.045	(2.4%)	275,352	18,679	11.8%	NM
▼ First Dubai For Real Estate Development	FIRST.KW	NM	1.04	0.00%	1.45	0.077	(0.001)	77.0	0.088	0.040	87.8%	1,666,589	129,070	50.7%	1.2%
▲ Kuwait Business Town Real Estate Co.	KBTK.KW	NM	0.86	0.00%	1.09	0.089	0.001	53.9	0.104	0.038	125.3%	94,515	8,377	94.0%	NM
= Real Estate Asset Management Co.	REAM.KW	NM	0.69	0.00%	0.09	0.090	0.000	9.9	0.000	0.000	0.0%	0	0	0.0%	NM
▼ MENA Real Estate Co. *	MENK.KW	NM	0.54	0.00%	0.98	0.063	(0.003)	8.7	0.105	0.027	127.3%	9,136,929	589,889	656.8%	NM
= Al Mudon International Real Estate Co.	ALMK.KW	NM	0.17	0.00%	0.83	0.021	0.000	2.1	0.027	0.019	14.4%	0	0	110.8%	NM
▼ Real Estate Trade Centers Co.	MARA.KW	NM	0.53	0.00%	0.40	0.086	(0.002)	12.9	0.123	0.027	211.6%	236,242	19,682	30.3%	NM
▼ Kuwait Remal Real Estate Co.	REMA.KW	NM	0.73	0.00%	0.88	0.019	(0.001)	5.8	0.028	0.016	(6.9%)	1,582,554	30,063	118.7%	NM
▼ Mashaer Holding Co.	MASHAER.KW	NM	0.79	0.00%	0.53	0.075	(0.001)	13.4	0.086	0.056	27.1%	153,637	11,490	50.7%	NM
= Ajwan Gulf Real Estate Co.	AJWN.KW	NM	0.35	0.00%	0.56	0.011	0.000	2.2	0.000	0.000	0.0%	0	0	0.0%	NM
▼ Al Masaken Intl. Real Estate Dev. Co.	MASKN.KW	NM	0.80	0.00%	0.16	0.052	(0.001)	5.2	0.069	0.025	109.7%	310,109	16,086	539.3%	NM
▲ Dalqan Real Estate Co.	DALQ.KW	NM	1.80	0.00%	NA	0.243	0.003	12.0	0.300	0.198	(11.3%)	17,001	4,034	45.3%	0.6%
= Dar Al Thuraya Real Estate Co.	THURY.KW	29.8	0.90	0.00%	NA	0.099	0.000	14.5	0.128	0.046	55.8%	0	0	4.0%	3.0%
▼ Osos Holding Group Co.	OSOS.KW	14.6	1.10	5.83%	0.29	0.120	(0.001)	12.6	0.131	0.083	33.3%	439,582	52,827	70.7%	7.5%
▲ KFH Capital REIT	BAITAKREIT.KW	NA	NA	1.42%	NA	1.299	0.009	30.7	1.311	1.018	27.2%	1,571	2,039	13.6%	NA
▼ Land United Real Estate Co.	LAND.KW	NM	0.93	0.00%	NA	0.110	(0.001)	16.5	0.200	0.095	(14.7%)	4,021,607	443,899	57.5%	NM
<b>Real Estate</b>		<b>NM</b>	<b>1.10</b>	<b>0.97%</b>				<b>2,978.1</b>			<b>45.0%</b>	<b>60,319,723</b>	<b>9,458,510</b>		<b>NM</b>

**Boursa Kuwait Daily Bulletin**

Thursday, November 25, 2021

Company	Reuters Ticker	Valuation Multiples				Price (KWD)		MKT Cap (KWD Mn.)	52 Weeks High (KWD)	52 Weeks Low (KWD)	YTD-21 Return #	Daily Trading Data		YTD-21 Capital Turnover	ROE
		Trailing P/E (X)	Trailing P/BV (X)	Dividend Yield	Beta	Closing	DTD Change					Volume (Shrs.)	Value (KWD)		
= Kuwait Investment Co.	KINV.KW	6.1	1.30	0.00%	0.75	0.281	0.000	154.9	0.317	0.119	130.3%	262,408	74,031	66.4%	21.3%
▲ Commercial Facilities Co.	FACI.KW	5.7	0.72	4.55%	0.53	0.208	0.002	111.6	0.220	0.168	9.5%	222,120	45,764	13.2%	12.6%
= Int'l Financial Advisors Co.	IFIN.KW	1.5	1.14	0.00%	1.26	0.119	0.000	31.7	0.145	0.059	99.0%	822,613	96,941	582.7%	75.6%
▼ National Investment Co.	NINV.KW	8.3	1.07	4.34%	1.25	0.231	(0.002)	202.4	0.251	0.128	71.1%	7,626,458	1,803,749	53.4%	12.8%
▲ Kuwait Projects Co.(Holding)	KPRO.KW	NM	1.46	3.26%	0.58	0.151	0.001	302.0	0.170	0.140	(5.0%)	1,163,692	174,936	18.9%	0.3%
= Coast Invest. & Development Co.	COAS.KW	NM	1.16	0.00%	1.30	0.119	0.000	55.3	0.127	0.050	145.4%	394,280	46,580	154.8%	NM
▼ The Securities House Co.	SECH.KW	NM	1.03	0.00%	1.14	0.104	(0.002)	46.8	0.117	0.052	144.1%	1,392,802	145,974	404.3%	NM
▲ Arzan Financial Group For Fin. & Invest.	ARZA.KW	50.7	1.23	0.00%	1.02	0.165	0.001	132.5	0.183	0.055	195.7%	1,148,828	189,467	314.9%	2.4%
▼ Kuwait Financial Centre	MARKZ.KW	4.5	0.84	0.00%	0.79	0.177	(0.004)	85.1	0.207	0.080	112.2%	2,736,947	485,656	113.0%	18.5%
▲ Kuwait & M.E. Financial Inv. Co.	KMEF.KW	12.0	1.20	0.00%	0.58	0.135	0.003	29.7	0.198	0.123	10.7%	7,000	946	14.5%	10.0%
▲ First Investment Co.	OLAK.KW	NM	0.80	0.00%	1.05	0.083	0.001	37.0	0.095	0.039	93.0%	1,493,519	122,679	737.7%	NM
= Al-Mal Investment Co.	MALK.KW	9.4	0.25	0.00%	1.14	0.006	0.000	1.8	0.000	0.000	0.0%	0	0	0.0%	2.7%
▼ Gulf Investment House	GIHK.KW	25.8	4.62	0.00%	1.00	0.306	(0.003)	198.5	0.340	0.076	267.8%	25,715	7,783	76.6%	17.9%
= A'ayan Leasing & Investment Co.	AAYA.KW	4.0	1.35	0.00%	1.25	0.160	0.000	114.2	0.204	0.097	74.1%	3,401,124	546,386	343.8%	34.1%
▼ Bayan Investment Co.	BAYK.KW	NM	0.52	0.00%	0.79	0.053	(0.000)	21.0	0.065	0.032	28.1%	485,001	25,483	177.6%	NM
▲ Osoul Investment Co.	OSUL.KW	35.1	0.79	0.00%	0.44	0.092	0.002	13.5	0.106	0.061	14.4%	126,600	11,088	36.8%	2.2%
▼ Kuwait Finance & Investment Co.	KFSK.KW	5.8	0.69	0.00%	0.35	0.090	(0.000)	29.0	0.125	0.042	108.8%	1,534	134	58.4%	12.0%
▼ Kamco Investment Co.	KAMC.KW	6.2	0.81	0.00%	0.44	0.136	(0.001)	46.6	0.149	0.072	84.0%	330,030	45,130	79.3%	13.1%
▲ National International Holding Co.	NIHK.KW	NM	1.02	0.00%	0.67	0.162	0.001	36.9	0.179	0.069	95.7%	469,000	75,673	136.2%	NM
= UniCap Investment and Finance	UNICAP.KW	7.6	0.97	0.00%	0.69	0.080	0.000	19.2	0.097	0.036	90.5%	30,780	2,475	112.8%	12.8%
▼ Al Madar Finance & Investment Co.	MADR.KW	NM	1.11	0.00%	0.38	0.112	(0.003)	24.0	0.156	0.086	22.9%	371,445	41,620	99.9%	NM
= Al-Deera Holding	DEER.KW	NM	1.41	0.00%	1.01	0.195	0.000	17.9	0.223	0.018	118.8%	0	0	337.9%	0.1%
▼ Al-Safat Investment Co.	ALSAFAT.KW	3.4	1.49	0.00%	NA	0.136	(0.001)	34.9	0.157	0.120	0.0%	227,860	30,914	118.3%	43.3%
▲ Al Salam Group Holding Co.	SAGH.KW	NM	0.32	0.00%	1.30	0.030	0.000	8.0	0.037	0.024	18.3%	896,100	26,743	336.5%	NM
▲ Ektitab Holding Co.	EKTT.KW	NM	0.49	0.00%	0.97	0.020	0.001	6.5	0.024	0.015	35.1%	4,255,800	86,487	206.8%	NM
= Al Madina For Finance & Investment Co.	MADI.KW	1.8	0.43	0.00%	1.18	0.016	0.000	6.6	0.019	0.015	3.2%	0	0	105.7%	23.8%
▼ NOOR Financial Investment Co.	NOOR.KW	8.6	1.74	1.83%	1.21	0.339	(0.010)	135.5	0.399	0.168	99.4%	150,860	51,847	39.2%	20.2%
▼ Tamdeen Investment Co.	TAMI.KW	NM	0.54	0.00%	0.34	0.382	(0.002)	131.8	0.414	0.200	23.2%	10,020	3,668	3.9%	NM
▲ Kuwait Syrian Holding Co.	KSHC.KW	31.7	1.38	0.00%	0.68	0.055	0.000	9.7	0.060	0.025	73.4%	1,832,670	100,050	51.1%	4.3%
▲ Asiya Capital Investment Co.	ASIYA.KW	33.5	0.55	0.00%	0.52	0.050	0.000	39.6	0.057	0.034	34.9%	165,557	8,069	62.7%	1.6%
▲ Gulf North Africa Holding Co.	GNAH.KW	72.2	1.17	0.00%	1.03	0.085	0.001	12.8	0.087	0.057	30.4%	47,800	4,068	22.6%	1.6%
▼ Alimtiyaz Investment Group	ALIMK.KW	NM	0.75	0.00%	0.98	0.123	(0.001)	139.4	0.142	0.106	9.8%	1,260,745	155,163	107.2%	NM
▼ Manazel Holding Co.	MANK.KW	29.8	1.13	0.00%	1.36	0.055	(0.001)	23.7	0.060	0.031	73.5%	2,715,232	149,164	277.3%	3.8%
= National Industries Group	NIND.KW	7.2	1.04	0.00%	1.44	0.279	0.000	398.4	0.296	0.165	58.5%	382,806	106,512	108.4%	14.5%
▼ Warba Capital Holding Co.	WARBACAP.KW	NM	0.64	0.00%	0.68	0.101	(0.007)	5.0	0.145	0.045	106.8%	889,205	89,704	130.3%	NM
▲ Arabi Holding Group Co.	AGHC.KW	48.6	1.11	0.00%	0.15	0.195	0.002	33.7	0.228	0.102	(1.5%)	418,020	80,703	88.6%	2.3%
▲ Privatization Holding Co.	KPPC.KW	20.3	0.45	0.00%	0.79	0.058	0.001	35.6	0.070	0.039	45.6%	517,973	30,020	229.8%	2.2%
= Credit Rating & Collection Co.	TAHS.KW	NM	2.20	0.00%	NA	0.064	0.000	10.6	0.069	0.020	190.9%	2,275,618	145,980	38.3%	NM
= Egypt Kuwait Holding Co.	EKKH.KW	13.2	2.74	0.00%	0.18	0.435	0.000	490.2	0.465	0.293	34.8%	533,329	229,486	5.8%	20.7%
▼ GFH Financial Group	GFH.KW	17.2	1.23	1.97%	0.86	0.092	(0.001)	347.0	0.104	0.047	96.0%	50,389,366	4,670,267	102.3%	7.2%
▲ Inovest	INOV.KW	NM	0.87	0.00%	0.74	0.123	0.004	37.0	0.134	0.063	87.5%	5,502,486	678,696	302.5%	NM
▼ Al Bareeq Holding	BAREEQ.KW	NM	0.66	0.00%	NA	0.040	(0.000)	30.1	0.102	0.034	(39.1%)	2,459,275	97,424	166.2%	NM
▲ Amar For Finance and Leasing Co.	AMARF.KW	13.8	0.78	0.00%	0.08	0.070	0.001	14.0	0.097	0.039	43.7%	60,201	4,214	31.9%	5.6%
▲ Al-Manar Financing & Leasing Co.	ALMANAR.KW	NM	0.74	0.00%	0.53	0.073	0.002	22.5	0.085	0.048	47.0%	135,628	9,573	34.8%	NM
▼ Boursa Kuwait Securities Co	BOURSA.KW	13.6	7.22	2.11%	0.75	1.893	(0.022)	380.1	2.432	1.091	72.1%	316,165	601,079	45.9%	53.2%
<b>Financial Services</b>		<b>13.1</b>	<b>1.23</b>	<b>1.01%</b>				<b>4,064.5</b>			<b>50.4%</b>	<b>97,954,612</b>	<b>11,302,326</b>		<b>9.4%</b>

## Boursa Kuwait Daily Bulletin

Thursday, November 25, 2021

Company	Reuters Ticker	Valuation Multiples				Price (KWD)		MKT Cap (KWD Mn.)	52 Weeks High (KWD)	52 Weeks Low (KWD)	YTD-21 Return #	Daily Trading Data		YTD-21 Capital Turnover	ROE
		Trailing P/E (X)	Trailing P/BV (X)	Dividend Yield	Beta	Closing	DTD Change					Volume (Shrs.)	Value (KWD)		
▲ Automated Systems Co.	ASCK.KW	NM	0.90	0.00%	0.18	0.106	0.006	10.6	0.122	0.068	53.4%	20	2	38.4%	NM
<b>Technology</b>		<b>NM</b>	<b>0.90</b>	<b>0.00%</b>				<b>10.6</b>			<b>53.4%</b>	<b>20</b>	<b>2</b>		<b>NM</b>
▲ Shamal Az-Zour Al-Oula Power and Water Co.	AZNOULA.KW	20.7	5.00	5.02%	0.65	0.239	0.001	262.9	0.276	0.220	(13.7%)	301,827	72,069	38.4%	24.2%
<b>Utilities</b>		<b>20.7</b>	<b>5.00</b>	<b>5.02%</b>				<b>262.9</b>			<b>(13.7%)</b>	<b>301,827</b>	<b>72,069</b>		<b>24.2%</b>
<b>Boursa Kuwait</b>		<b>28.4</b>	<b>1.79</b>	<b>1.59%</b>				<b>42,387.8</b>			<b>28.45%</b>	<b>219,034,858</b>	<b>37,885,874</b>		<b>6.3%</b>

## Year-to-Date 2021 Top Movers &amp; Most Active Stocks

YTD Top % Gainers	Close (KWD)	Percent Change	YTD Top % Losers	Close (KWD)	Percent Change
Al Eid Food Co.	0.273	294.7%	Yiaco Medical Co.	0.448	(46.7%)
Gulf Investment House	0.306	267.8%	Al Bareeq Holding	0.040	(39.1%)
National Real Estate Co.	0.224	243.1%	Al Kout for Industrial Projects Co.	0.451	(33.2%)
IFA Hotels & Resorts Co.	0.063	225.1%	National Petroleum Services Co.	0.810	(22.8%)
Real Estate Trade Centers Co.	0.086	211.6%	Land United Real Estate Co.	0.110	(14.7%)
YTD Most Active by Volume	Close (KWD)	Volume (Shrs.)	YTD Most Active by Value	Close (KWD)	Value (KWD)
GFH Financial Group	0.092	3,861,754,896	Kuwait Finance House	0.834	1,057,561,618
Ahli United Bank - Bahrain	0.285	3,428,362,366	National Bank of Kuwait	1.017	967,902,670
First Investment Co.	0.083	3,290,020,916	Ahli United Bank - Bahrain	0.285	815,194,864
AAN Digital Services Co.	0.019	2,962,394,164	Agility (PWC Logistics)	0.997	635,472,789
MAZAYA Holding Co.	0.079	2,772,529,192	Gulf Bank	0.254	541,647,931

\* Different Fiscal Year Company

## Disclaimer &amp; Important Disclosures

Kamco Invest is authorized and fully regulated by the Capital Markets Authority ("CMA, Kuwait") and partially regulated by the Central Bank of Kuwait ("CBK").

This document is provided for informational purposes only. Nothing contained in this document constitutes investment, an offer to invest, legal, tax or other advice or guidance and should be disregarded when considering or making investment decisions. In preparing this document, Kamco Invest did not take into account the investment objectives, financial situation and particular needs of any particular person. Accordingly, before acting on this document, investors should independently evaluate the investments and strategies referred to herein and make their own determination of whether it is appropriate in light of their own financial circumstances and objectives. The entire content of this document is subject to copyright with all rights reserved. This research and the information contained herein may not be reproduced, distributed or transmitted in Kuwait or in any other jurisdiction to any other person or incorporated in any way into another document or other material without our prior written consent.

## Analyst Certification

Each of the analysts identified in this report, if any and where applicable, certifies, with respect to the sector, companies or securities that the individual analyses, that (1) the views expressed in this report reflect his or her personal views about all of the subject companies and securities and (2) no part of his or her compensation was, is or will be directly or indirectly dependent on the specific recommendations or views expressed in this report.

## Kamco Invest Ratings

Kamco Invest research is based on the analysis of regional and country economics, industries and company fundamentals. Kamco Invest company research reflects a long-term (12-month) target price for a company or stock. The ratings bands are:

\* **Outperform:** Target Price represents expected returns >= 10% in the next 12 months

\* **Neutral:** Target Price represents expected returns between -10% and +10% in the next 12 months

\* **Underperform:** Target Price represents an expected return of <-10% in the next 12 months

In certain circumstances, ratings may differ from those implied by a fair value target using the criteria above. Kamco Invest policy is to maintain up-to-date fair value targets on the companies under its coverage, reflecting any material changes to the analyst's outlook on a company. Share price volatility may cause a stock to move outside the rating range implied by Kamco Invest's fair value target. Analysts may not necessarily change their ratings if this happens, but are expected to disclose the rationale behind their view to Kamco Invest clients.

Any terms and conditions proposed by you which are in addition to or which conflict with this Disclaimer are expressly rejected by Kamco Invest and shall be of no force or effect. The information contained in this document is based on current trade, statistical and other public information we consider reliable. We do not represent or warrant that such information is fair, accurate or complete and it should not be relied upon as such. Kamco Invest has no obligation to update, modify or amend this document or to otherwise notify a recipient thereof in the event that any opinion, forecast or estimate set forth herein, changes or subsequently becomes inaccurate. The publication is provided for informational uses only and is not intended for trading purposes. The information on publications does not give rise to any legally binding obligation and/or agreement, including without limitation any obligation to update such information. You shall be responsible for conducting your own investigation and analysis of the information contained or referred to in this document and of evaluating the merits and risks involved in the securities forming the subject matter of this or other such document. Moreover, the provision of certain data/information in the publication may be subject to the terms and conditions of other agreements to which Kamco Invest is a party.

Nothing in this document should be construed as a solicitation or offer, or recommendation, to acquire or dispose of any investment or to engage in any other transaction, or to provide any investment advice or service. This document is directed at Professional Clients and not Retail Clients within the meaning of CMA rules. Any other persons in receipt of this document must not rely upon or otherwise act upon it. Entities and individuals

\*Kamco Investment Company (DIFC) Limited ("Kamco Invest DIFC"), Office 205, Level 2, Gate Village 1, Dubai International Financial Centre, a wholly owned subsidiary of Kamco Investment Company KSC (Public), is regulated by the Dubai Financial Services Authority (DFSA). Kamco Invest DIFC may only undertake the financial services activities that fall within the scope of its existing DFSA licence. The information in this document may be distributed by Kamco Invest DIFC on behalf of Kamco Investment Company KSC (Public). This document is intended for Professional Clients or Market Counterparties only as defined by the DFSA, and no other person should act upon it.

This document may not be distributed in Saudi Arabia except to such persons as are permitted under the Offers of Securities Regulations issued by the Capital Market Authority. The Capital Market Authority does not make any representation as to the accuracy or completeness of this document, and expressly disclaims any liability whatsoever for any loss arising from, or incurred in reliance upon, any part of this document. The recipients of this document hereby should conduct their own due diligence on the accuracy of the information relating to the contents of this document. If you do not understand the contents of this document you should consult an authorized financial advisor.

## Risk Warnings

Any prices, valuations or forecasts are indicative and are not intended to predict actual results, which may differ substantially from those reflected. The value of an investment may go up as well as down. The value of and income from any investment may fluctuate from day to day as a result of changes in relevant economic markets (including, without limitation, foreseeable or unforeseeable changes in interest rates, foreign exchange rates, default rates, prepayment rates, political or financial conditions, etc.).

Past performance is not indicative of future results. Any opinions, estimates, valuations or projections (target prices and ratings in particular) are inherently imprecise and a matter of judgment. They are statements of opinion and not of fact, based on current expectations, estimates and projections, and rely on beliefs and assumptions. Actual outcomes and returns may differ materially from what is expressed or forecasted. There are no guarantees of future performance. Certain transactions, including those involving futures, options, and other derivatives, give rise to substantial risk and are not suitable for all investors. This document does not propose to identify or to suggest all of the risks (direct or indirect) which may be associated with the investments and strategies referred to herein.

## Conflict of Interest

Kamco Invest and its affiliates provide full investment banking services, and they and their directors, officers and employees, may take positions which conflict with the views expressed in this document. Salespeople, traders, and other professionals of Kamco Invest may provide oral or written market commentary or trading strategies to our clients and our proprietary trading desks that reflect opinions that are contrary to the opinions expressed in this document. Our asset management area, our proprietary trading desks and investing businesses may make investment decisions that are inconsistent with the recommendations or views expressed in this document. Kamco Invest may have or seek investment relationships for which it will receive compensation from the companies that are the subject of this document. Facts and views presented in this document have not been reviewed by, and may not reflect information known to, professionals in other Kamco Invest business areas, including investment banking personnel. United Gulf Bank, Bahrain owns majority of Kamco Invest's shareholding and this ownership may create, or may create the appearance of, conflicts of interest.

## No Liability &amp; Warranty

Kamco Invest makes neither implied nor expressed representations or warranties and, to the fullest extent permitted by applicable law, we hereby expressly disclaim any and all express, implied and statutory representations and warranties of any kind, including, without limitation, any warranty as to accuracy, timeliness, completeness, and fitness for a particular purpose and/or non-infringement. Kamco Invest will accept no liability in any event including (without limitation) your reliance on the information contained in this document, any negligence for any damages or loss of any kind, including (without limitation) direct, indirect, incidental, special or consequential damages, expenses or losses arising out of, or in connection with your use or inability to use this document, or in connection with any error, omission, defect, computer virus or system failure, or loss of any profit, goodwill or